

ASX ANNOUNCEMENT / MEDIA RELEASE

ASX: ABU

1 August, 2012

***High Grade Gold Drill Results Extend
Cypress Zone at Buccaneer***

***6 metres averaging 20.37g/t gold within
294 metres averaging 0.73g/t gold***

ABM Resources NL ("ABM" or "The Company") is pleased to announce further results of this season's extensional drilling at the Company's 2.67 million ounce gold Buccaneer Porphyry Deposit.

Highlights from Buccaneer

- High grade intercepts at the Cypress Zone at the Buccaneer Porphyry Gold Deposit in hole BCRC100101 with:
 - 6 metres averaging 20.37g/t gold (1.1g/t cut-off) within:
 - 294 metres averaging 0.73g/t gold (0.2g/t cut-off).

- Other results include extensions of the Eastern Contact Zone at Buccaneer with:
 - 157 metres averaging 0.45g/t gold (0.2g/t gold) including two zones of:
 - 39 metres averaging 0.90g/t gold (0.5g/t cut-off) and
 - 22 metres averaging 0.97g/t gold (0.5g/t cut-off).

Darren Holden, Managing Director, said, "The identification of further high grade gold bolsters the economic prospects of the bulk tonnage Buccaneer Gold Deposit. The latest results extend the Cypress Zone and the overall Buccaneer Gold Deposit footprint further along the north western contact. Mineralisation along the north western contact extends for more than a kilometre from the Caribbean Zone in the south to the Cypress Zone to the north. "

Buccaneer 2012 Programs

The Twin Bonanza Gold Project includes both the Old Pirate High Grade Gold Deposit and the Buccaneer Porphyry Gold Deposit. The 2012 field programs are primarily focused on advancing the high grade Old Pirate Deposit. However, several areas at Buccaneer remain untested where the Company is drilling to infill and extend the deposit. The latest round of results is presented in Appendix 1.

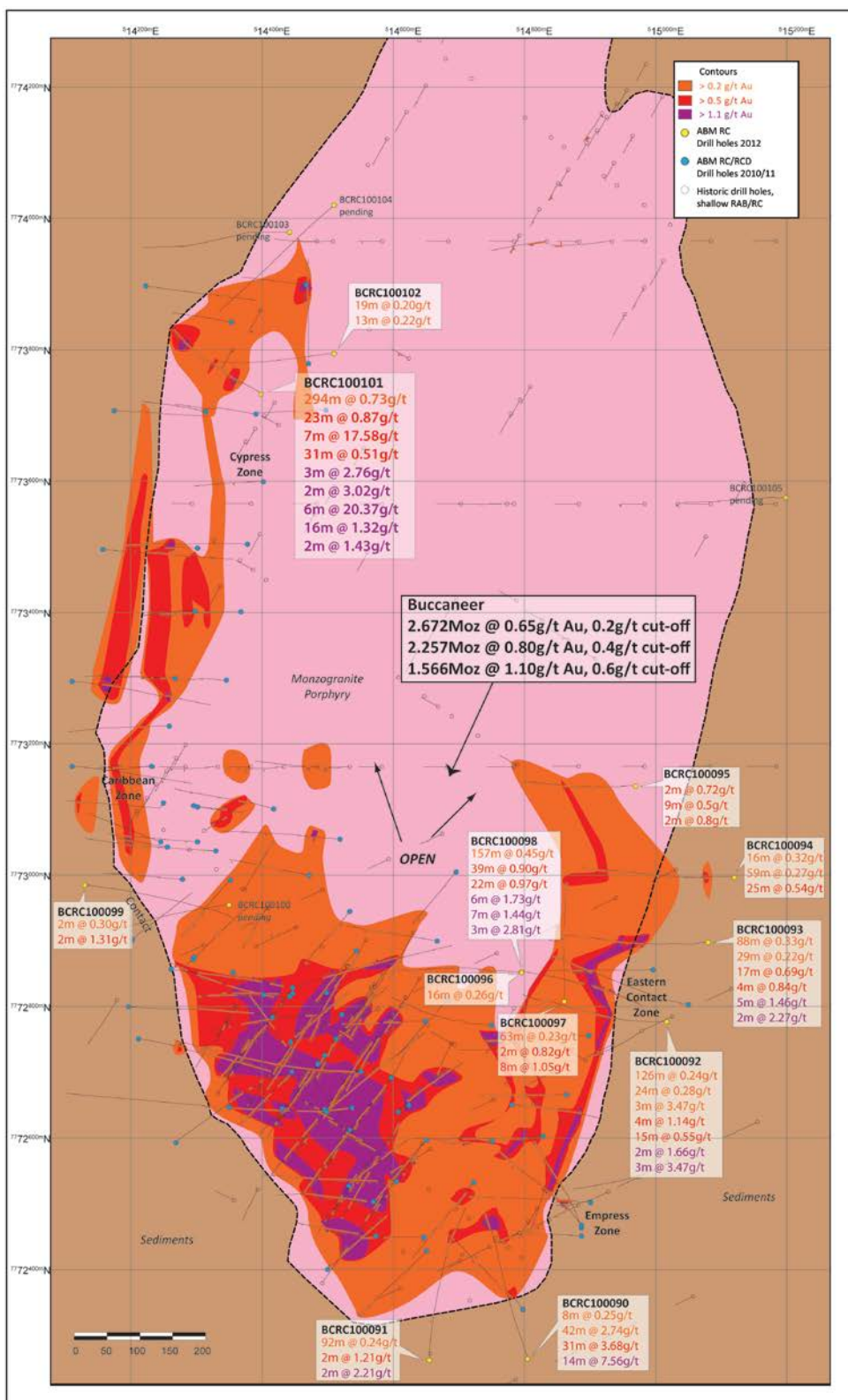


Figure 1. Updated Schematic Contour Map of the Buccaneer Porphyry Gold Deposit with latest drill results labelled.

Hole BCRC100101 was drilled to test the Cypress Zone where in 2011 ABM intersected a high grade mineralised structure located close to the western contact of the monzonite porphyry body. BCRC100101 intersected several zones of mineralisation from a depth of 78 m including the high grade zone of 6 metres averaging 20.37g/t gold from a down hole depth of 187 metres (approximately 172m below surface) (Figure 1 and Figure 2). Mineralised zones at Cypress consist of intense chlorite alteration and quartz veining within the monzonite porphyry.

Other results presented in this release include wide zones of typical Buccaneer type mineralisation extending the Eastern Contact Zone (Figure 1 and Appendix 1).

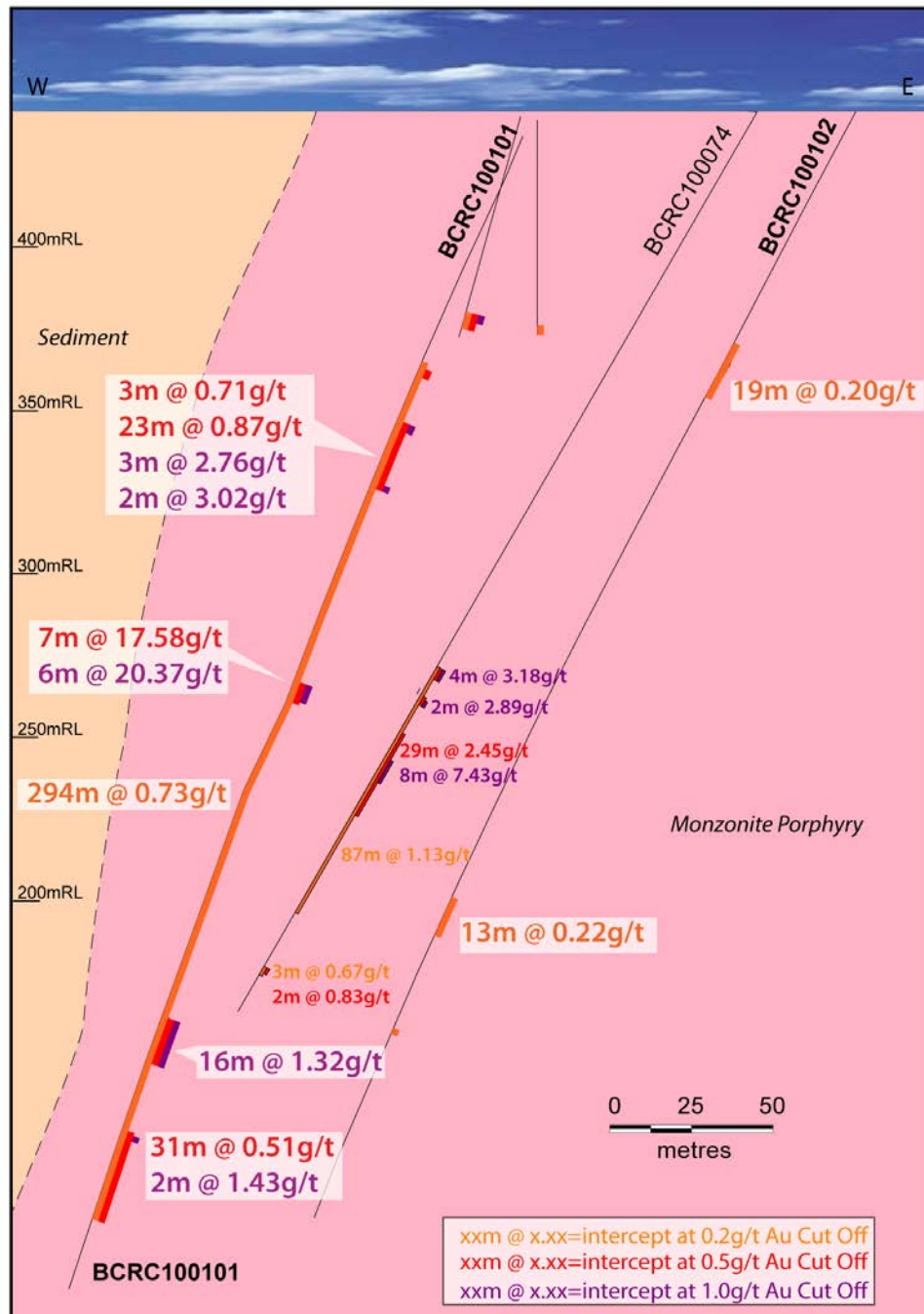


Figure 2. Cross-section through BCRC100101 and BCRC100102.

About ABM Resources

ABM Resources is an exploration company developing several gold discoveries in the Tanami-Arunta region of the Northern Territory of Australia. The Company has a multi-tiered approach to exploration

and development with a combination of high grade potentially short-term production scenarios such as Old Pirate, large scale discoveries such as Buccaneer, and regional exploration discoveries such as the Kroda Gold Project. In addition, ABM Resources is committed to regional exploration programs throughout its extensive holdings.

ABM Resources is well capitalised to achieve its milestones in 2012 and into 2013 with \$23M in cash (as of quarterly report dated 30 June 2012).

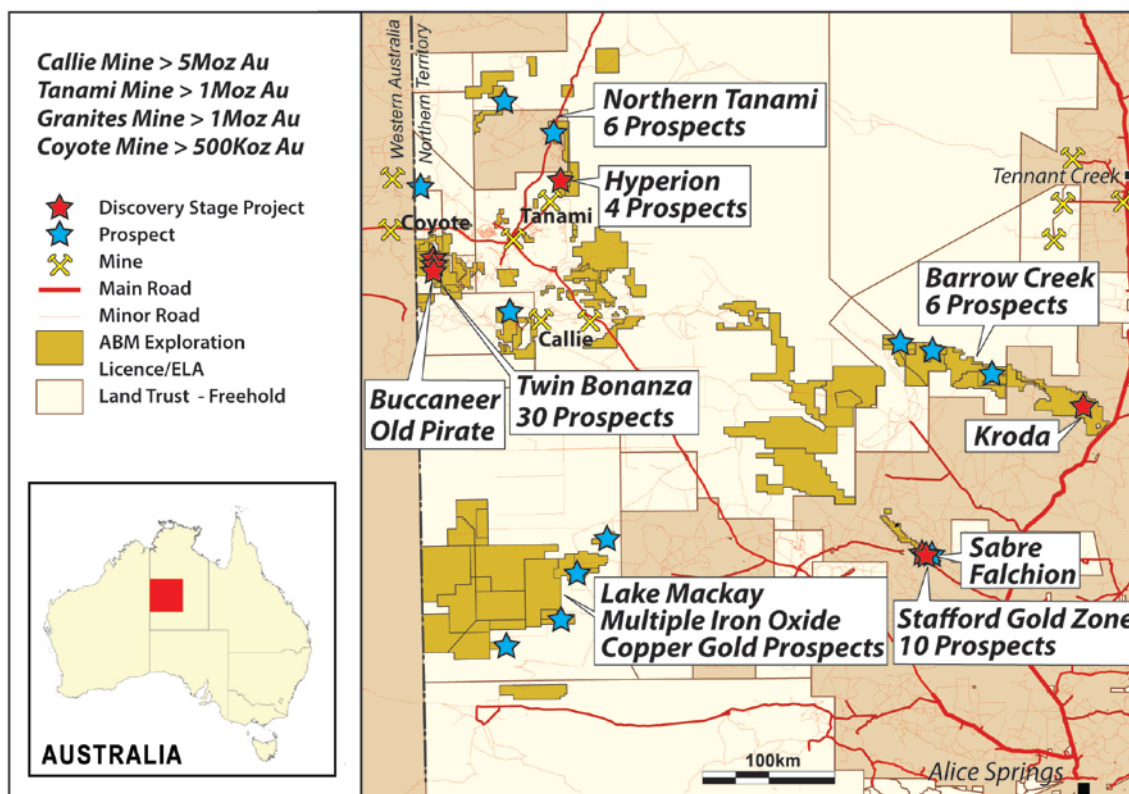


Figure 3. ABM Project Location Map Northern Territory.

Signed

Darren Holden – Managing Director

Competent Persons Statement

The information in this report that relates to Exploration Results, Mineral Resources or Ore Reserves is based on information compiled by Mr Darren Holden who is a Member of The Australasian Institute of Mining and Metallurgy. Mr Holden is a full time employee of ABM Resources NL and has sufficient experience which is relevant to the style of mineralisation and type of deposit under consideration and to the activity which he is undertaking to qualify as a Competent Person as defined in the 2004 Edition of the "Australasian Code for Reporting Exploration Results, Mineral Resources and Ore Reserves". Mr Holden consents to the inclusion in the documents of the matters based on this information in the form and context in which it appears.

For Further Information Please Contact

Jutta Zimmermann
CFO / Company Secretary
+61 8 9423 9777

Darren Holden
Managing Director
+61 8 9423 9777

Berdine Mastaglia
Investor Relations Manager
+61 8 9423 9777

APPENDIX 1. Details of 2012 drill results from the Buccaneer Porphyry Deposit.

Table 1.1. Significant intercepts for holes at the Buccaneer extensions at 0.2g/t gold cut-off.

Hole ID	Depth From (m)	Depth To (m)	Interval (m)	Gold (g/t)
BCRC100090	274	282	8	0.25
BCRC100090	354	396	42	2.74
BCRC100091	301	393	92	0.24
BCRC100092	148	274	126	0.24
BCRC100092	317	341	24	0.28
BCRC100092	378	381	3	3.47
BCRC100093	175	263	88	0.33
BCRC100093	298	327	29	0.22
BCRC100094	76	92	16	0.32
BCRC100094	331	390	59	0.27
BCRC100096	84	100	16	0.26
BCRC100097	308	371	63	0.23
BCRC100098	226	383	157	0.45
BCRC100099	134	136	2	0.30
BCRC100101	78	372	294	0.73
BCRC100102	98	117	19	0.20
BCRC100102	289	302	13	0.22
BCRC100102	333	335	2	0.48

Significant intercepts calculated for holes BCRC100090, BCRC100091, BCRC100092, BCRC100093, BCRC100094, BCRC100096, BCRC100097, BCRC100098, BCRC100099, BCRC100101 and BCRC100102 at a 0.2g/t gold cut-off, minimum 2 metre width and maximum 20 metre internal dilution. All Samples processed at ALS Global Laboratories in Alice Springs (NT) and Perth (WA) using Fire Assay for gold.

Table 1.2. Significant intercepts for holes at the Buccaneer extensions at 0.5g/t gold cut-off.

Hole ID	Depth From (m)	Depth To (m)	Interval (m)	Gold (g/t)
BCRC100090	365	396	31	3.68
BCRC100091	114	116	2	1.21
BCRC100092	163	167	4	1.14
BCRC100092	180	195	15	0.55
BCRC100093	175	192	17	0.69
BCRC100093	209	213	4	0.84
BCRC100094	331	356	25	0.54
BCRC100095	205	207	2	0.72
BCRC100095	236	245	9	0.50
BCRC100095	336	338	2	0.80
BCRC100097	315	317	2	0.82
BCRC100097	363	371	8	1.05
BCRC100098	226	265	39	0.90
BCRC100098	278	300	22	0.97

Hole ID	Depth From (m)	Depth To (m)	Interval (m)	Gold (g/t)
BCRC100099	351	353	2	1.31
BCRC100101	80	83	3	0.71
BCRC100101	98	121	23	0.87
BCRC100101	187	194	7	17.58
BCRC100101	341	372	31	0.51

Significant intercepts calculated for BCRC100090, BCRC100091, BCRC100092, BCRC100093, BCRC100094, BCRC100095, BCRC100097, BCRC100098, BCRC100099 and BCRC100101 at a 0.5g/t gold cut-off, minimum 2 metre width and maximum 10 metre internal dilution. All Samples processed at ALS Global Laboratories in Alice Springs (NT) and Perth (WA) using Fire Assay for gold.

Table 1.3. Significant intercepts for holes at the Buccaneer extensions at 1.1g/t gold cut-off.

Hole ID	Depth From (m)	Depth To (m)	Interval (m)	Gold (g/t)
BCRC100090	365	379	14	7.56
BCRC100091	344	346	2	2.21
BCRC100092	165	167	2	1.66
BCRC100092	378	381	3	3.47
BCRC100093	176	181	5	1.46
BCRC100093	224	226	2	2.27
BCRC100098	257	263	6	1.73
BCRC100098	279	286	7	1.44
BCRC100098	293	296	3	2.81
BCRC100101	98	101	3	2.76
BCRC100101	119	121	2	3.02
BCRC100101	187	193	6	20.37
BCRC100101	302	318	16	1.32
BCRC100101	342	344	2	1.43

Significant intercepts calculated for holes BCRC100090, BCRC100091, BCRC100092, BCRC100093, BCRC100098 and BCRC100101 at a 1.1g/t gold cut-off, minimum 2 metre width and maximum 5 metre internal dilution. All Samples processed at ALS Global Laboratories in Alice Springs (NT) and Perth (WA) using Fire Assay for gold.

Appendix 2. Buccaneer 2012 Program Drill Hole Status

Hole ID	Prospect	Easting (m)	Northing (m)	Elevation above sea level	Inclination (degrees)	Azimuth (degrees)	Depth (m)	Target Zone	Results Status
BCRC100090	Buccaneer	514805	7772264	429	-60	340	396	Buccaneer Extensions	Released
BCRC100091	Buccaneer	514655	7772262	433	-60	360	450	Buccaneer Extensions	Released
BCRC100092	Buccaneer	515017	7772777	432	-60	270	396	Buccaneer Extensions	Released
BCRC100093	Buccaneer	515080	7772898	432	-60	270	396	Buccaneer Extensions	Released
BCRC100094	Buccaneer	515120	7772997	431	-60	270	400	Buccaneer Extensions	Released
BCRC100095	Buccaneer	514970	7773136	431	-60	270	396	Buccaneer Extensions	Released
BCRC100096	Buccaneer	514796	7772852	431	-60	270	396	Buccaneer Extensions	Released
BCRC100097	Buccaneer	514861	7772808	431	-60	356.5	396	Buccaneer Extensions	Released
BCRC100098	Buccaneer	514796	7772853	431	-60	90	396	Buccaneer Extensions	Released
BCRC100099	Buccaneer	514130	7772985	431	-60	86.5	396	Caribbean	Released
BCRC100100	Buccaneer	514350	7772955	431	-60	266.5	396	Caribbean	Pending
BCRC100101	Buccaneer	514399	7773732	431	-60	310	396	Cypress	Released
BCRC100102	Buccaneer	514510	7773794	454	-60	266.5	396	Cypress	Released
BCRC100103	Buccaneer	514442	7773979	454	-60	266.5	450	Cypress	Pending
BCRC100104	Buccaneer	514510	7774020	431	-60	226.5	450	Cypress	Pending
BCRC100105	Buccaneer	515199	7773575	432	-60	265.5	348	Cypress	Pending

Appendix 3.

Table 1 Buccaneer Gold Deposit Inferred Resource. Refer release dated 16/04/2012 for further details.

Cut-off Grade (g/t)	Million Tonnes (Mt)	Gold Grade (g/t)	Contained Gold (Million Ounces (Moz))
0.2	127.9	0.65	2.672
0.4	88.3	0.80	2.257
0.6	44.1	1.10	1.566

Note – Million Tonnes (MT) rounded to 3 significant figures; gold grade rounded to 3 significant figures and Million Ounces (Moz) rounded to 3 significant figures. Refer to release dated 16/04/2012 for further details.

Table 2 Old Pirate Resource Estimation without utilising a top-cut. Refer release dated 16/04/2012 for further details.

All Vein Models	Tonnes	Gold (g/t)	Ounces
Indicated	347,000	5.31	59,200
Inferred	1,327,000	11.86	505,800
Total	1,673,000	10.50	565,000
High Grade Vein Models Only	Tonnes	Gold (g/t)	Ounces
Indicated	132,000	7.74	32,800
Inferred	354,000	22.64	257,600
Total	486,000	18.60	290,400

*Note - totals may vary due to rounding.

Table 3 Old Pirate Resource Estimation with utilising 300g/t top-cut. Refer release dated 16/04/2012 for further details.

All Vein Models	Tonnes	Gold (g/t)	Ounces
Indicated	347,000	5.25	58,500
Inferred	1,327,000	8.65	368,900
Total	1,673,000	7.95	427,400
High Grade Vein Models Only	Tonnes	Gold (g/t)	Ounces
Indicated	132,000	7.62	32,200
Inferred	354,000	17.52	199,400
Total	486,000	14.84	231,600

*Note - totals may vary due to rounding.