



ASX ANNOUNCEMENT / MEDIA RELEASE

ASX:ABU

March 20th, 2012

Mines and Money Hong Kong Presentation

The attached presentation will be delivered by Managing Director Darren Holden at the Mines and Money Conference in Hong Kong on Tuesday 20th of March at 3:10pm.

About ABM Resources NL

ABM is a mineral exploration company focused on gold and gold/copper discovery in the Tanami-Arunta regions of the Northern Territory, Australia. The Company is one of the largest exploration license / license application holders in Australia. The Company has an aggressive exploration approach.

Signed

A handwritten signature in black ink, appearing to read 'Darren Holden'.

Darren Holden – Managing Director

For Further Information Please Contact

Jutta Zimmermann
CFO / Company Secretary
+61 8 9423 9777

Darren Holden
Managing Director
+61 8 9423 9777

Berdine Mastaglia
Investor Relations Manager
+61 8 9423 9777

ABM RESOURCES NL

Level 1, 141 Broadway Nedlands Western Australia 6009 . www.abmresources.com.au
Email: admin@abmresources.com.au . Tel: +61 8 9423 9777 . Fax: +61 8 9423 9733
ABN: 58 009 127 020

“Unlocking the potential
of Australia’s
Final Frontier”

Performance, Integrity, Leadership,
Focus and Simplicity

ABM IS THE LARGEST LANDHOLDER
IN THE GOLD EXPLORATION SECTOR,
CONTROLLING THE UPSIDE OF THE
MOST UNDER-EXPLORED GOLD BELT
IN AUSTRALIA.

1.67 MILLION OUNCES AND
GROWING.

ABM RESOURCES NL
(ASX:ABU)

Mines and Money Hong Kong
March 2012

Darren Holden – Managing Director

DISCLAIMER

- This presentation has been prepared by ABM Resources NL (“ABM” or the “Company”). It should not be considered as an offer or invitation to subscribe for or purchase any securities in the Company or as an inducement to make an offer or invitation with respect to those securities. No agreement to subscribe for securities in the Company will be entered into on the basis of this presentation.
- This presentation contains forecasts and forward looking information. Such forecasts and information are not a guarantee of future performance, involve unknown risks and uncertainties. Actual results and developments will almost certainly differ materially from those expressed or implied. ABM has not audited or investigated the accuracy or completeness of the information, statements and opinions contained in this presentation. Accordingly, to the maximum extent permitted by applicable laws, ABM makes no representation and can give no assurance, guarantee or warranty, express or implied, as to, and take no responsibility and assume no liability for, the authenticity, validity, accuracy, suitability or completeness of, or any errors in or omission from, any information, statement or opinion contained in this presentation.
- You should not act or refrain from acting in reliance on this presentation material. This overview of ABM does not purport to be all inclusive or contain all information which its recipients may require in order to make an informed assessment of the Company’s prospects. You should conduct your own investigation and perform your own analysis in order to satisfy yourself as to the accuracy and completeness of the information, statements and opinions contained in this presentation and making any investment decision.

Technical Statement / Competent Persons Statement

- The information in this report that relates to Exploration Results, Mineral Resources or Ore Reserves is based on information compiled by Mr Darren Holden who is a Member of The Australasian Institute of Mining and Metallurgy. Mr Holden is a full time employee of ABM Resources NL and has sufficient experience which is relevant to the style of mineralisation and type of deposit under consideration and to the activity which he is undertaking to qualify as a Competent Person as defined in the 2004 Edition of the “Australasian Code for Reporting Exploration Results, Mineral Resources and Ore Reserves”. Mr Holden consents to the inclusion in the documents of the matters based on this information in the form and context in which it appears.
- Refer to previous Company Press-Releases for full resource estimation details, drill hole details, and intercept calculations. A full list is provided in Appendix 1.
- Details of the Buccaneer Gold Deposit Inferred Resource are in Appendix 2.

Drill Early / Drill Deep – Growing a Company with Optionality

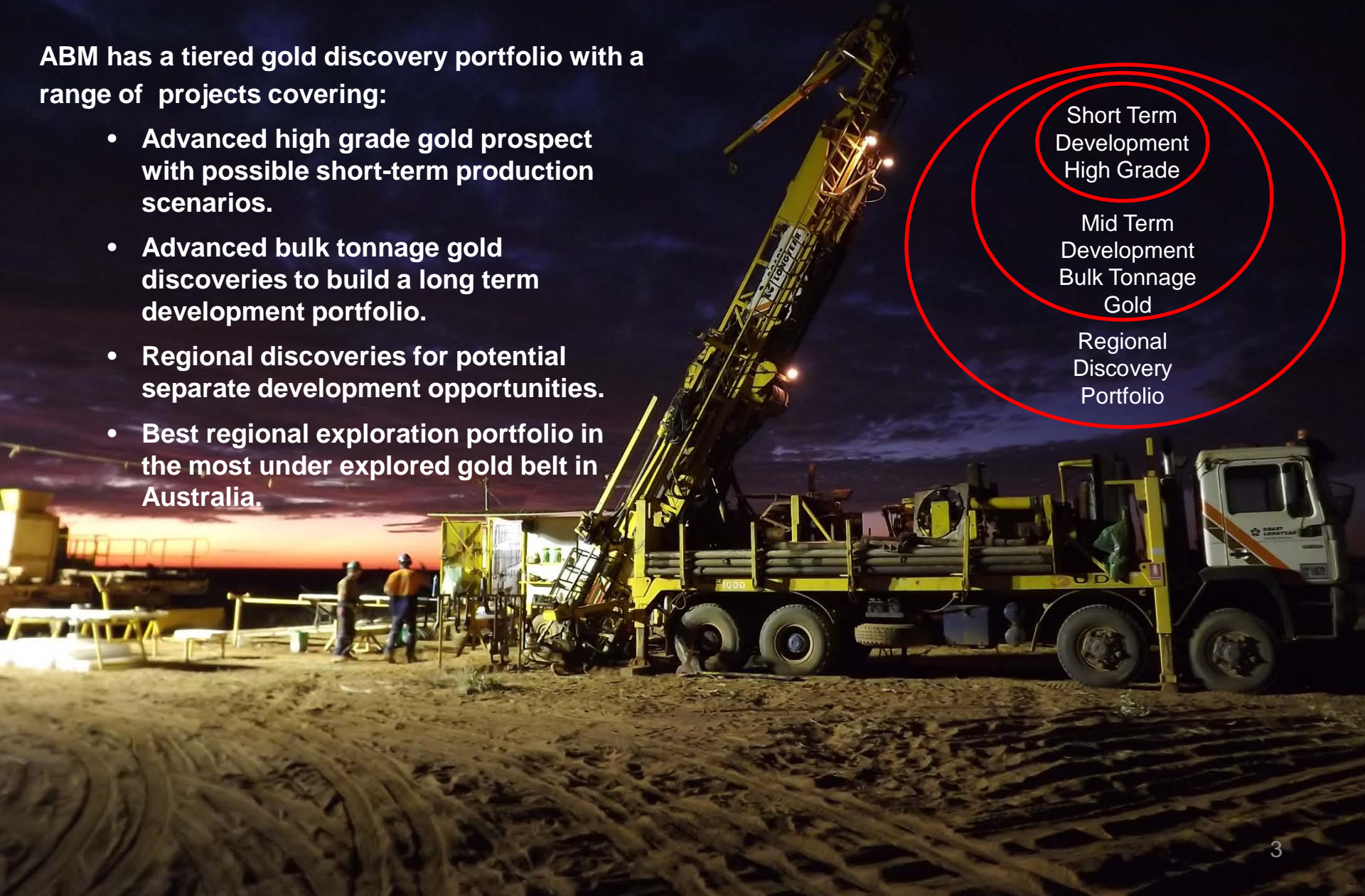
ABM has a tiered gold discovery portfolio with a range of projects covering:

- Advanced high grade gold prospect with possible short-term production scenarios.
- Advanced bulk tonnage gold discoveries to build a long term development portfolio.
- Regional discoveries for potential separate development opportunities.
- Best regional exploration portfolio in the most under explored gold belt in Australia.

Short Term
Development
High Grade

Mid Term
Development
Bulk Tonnage
Gold

Regional
Discovery
Portfolio



Structure

ASX:ABU

Shares on issue = 3,241M

Share options (VWAP ~1.7c) = 280M

Cash (beginning of March 2012) = ~\$26.3M

Market Capitalisation (5.0 cents) = ~\$162M

Fully Diluted Enterprise Value (5.0 cents) = ~\$145M

Chairman

Mike Etheridge

Managing Director

Darren Holden

Non-Exec Director

Imants Kins

Non-Exec Director

Graeme Sloan

Company Secretary / CFO

Jutta Zimmermann

APAC Resources Capital Limited 19.99%

Craton Capital 5.79%

HSBC Custody Nominees 5.65%

Tanami Exploration NL 4.94%

Citicorp Nominees 3.87%

Jemaya Pty Ltd 2.99%

Sun Hung Kai Investments 2.56%

Emma Radford 2.20%

N. Featherby 1.86%

Rexfam / King and related parties 1.32%

Brispot Nominees Pty Ltd 0.95%

Perth Select Seafood 0.90%

M F Custodians Ltd 0.83%

Credit Suisse Securities 0.67%

Darren Holden 0.64%

Total Top 15 Shareholders 55.17%

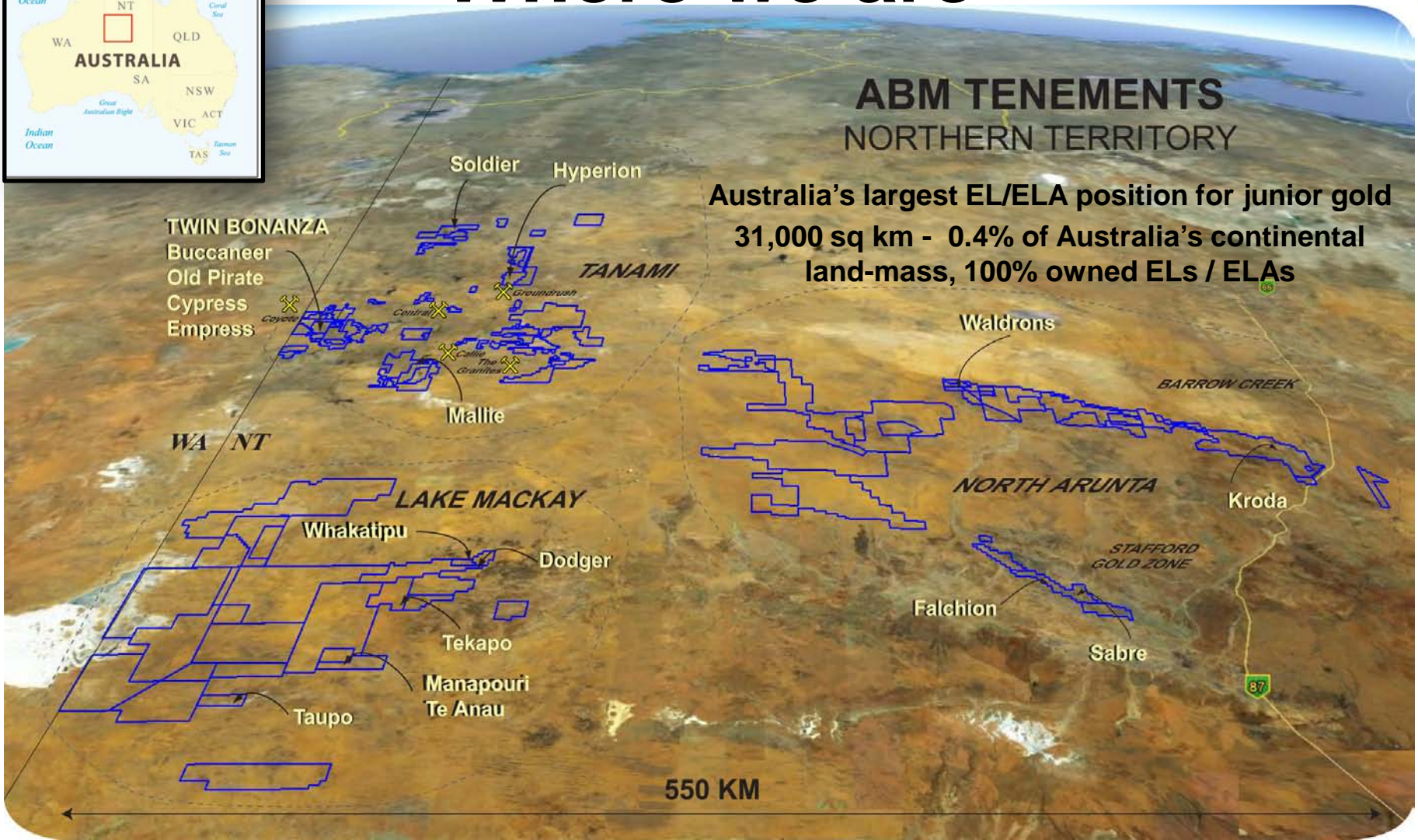
Analyst Coverage:

- Hartleys Limited
- Canaccord BGF Ltd
- Paterson Securities Ltd



300% Return since drilling commenced in 05/2010

Where we are



ABM TENEMENTS NORTHERN TERRITORY

Australia's largest EL/ELA position for junior gold
 31,000 sq km - 0.4% of Australia's continental
 land-mass, 100% owned ELs / ELAs

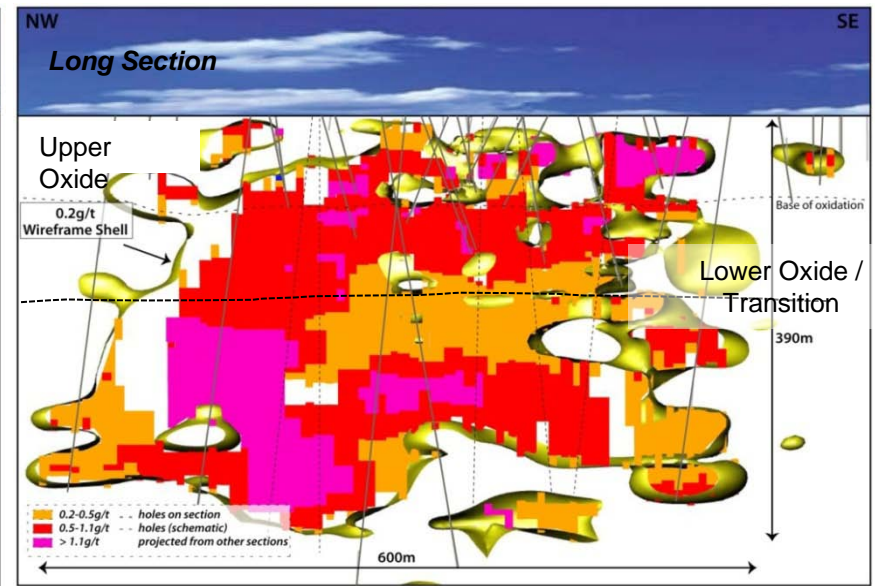
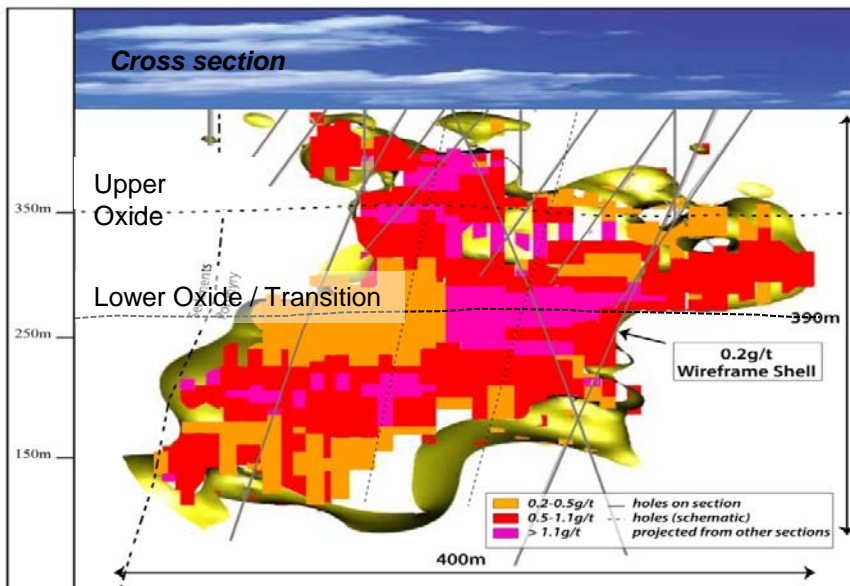
Twin Bonanza - Buccaneer

*** RESOURCE UPDATE WORK UNDERWAY ***

Buccaneer Porphyry - Maiden Resource Estimation – Feb 2011

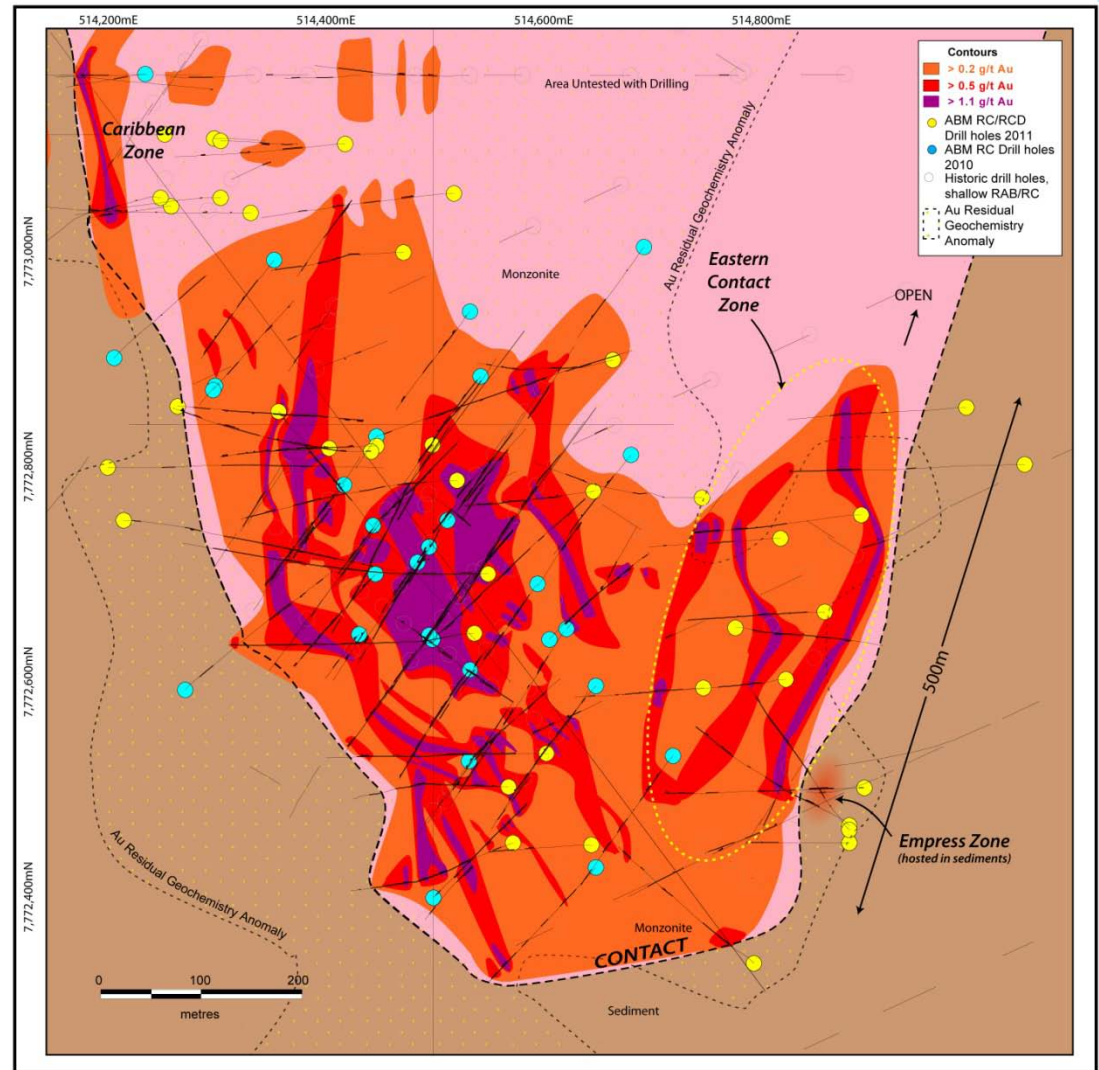
- February 2011 Inferred Resource of:

- **65.8Mt @ 0.79g/t Au for 1.67Moz gold(0.2g/t cut-off),**
- **36.9Mt @ 1.01g/t Au 1.2Moz Ounces (0.5g/t cut-off),**
- **8.7Mt @ 2.01g/t Au 0.56Moz Ounces (1.1g/t cut-off).**
- *Inferred Resource extends over area of 600m x 400m.*
- *Fully independent by SRK Consulting Ltd.*



Twin Bonanza Camp Buccaneer Gold Porphyry

- 363m @ 0.59g/t gold including:
 - 202m @ 1.00g/t gold inc:
 - 39m @ 2.24g/t gold.
- 341m @ 0.69g/t gold inc:
 - 93m @ 0.70g/t gold, and
 - 127m @ 1.18g/t gold inc:
 - 67m @ 2.07g/t gold.
- 221m @ 0.95g/t gold inc:
 - 172m @ 1.11g/t gold inc:
 - 81m @ 2.03 g/t gold.
- 435m @ 0.69g/t gold inc:
 - 203m @ 1.07g/t gold,
 - 41m @ 3.54g/t gold,
 - 6m @ 19.84g/t gold.

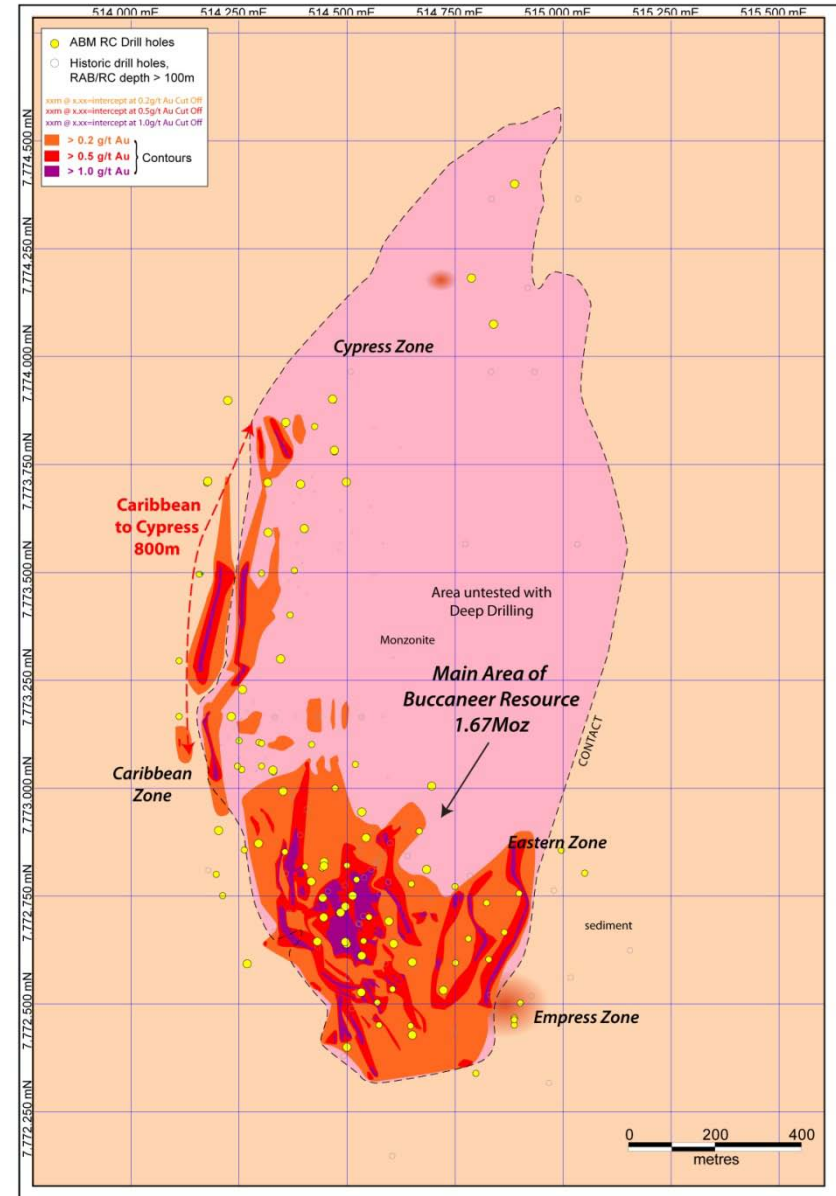


Plan view of southern portion of the Buccaneer Porphyry Prospect showing drill hole locations and geology. Map includes inferred composite contour at various grade cut-offs from drilling projected from various levels to surface i.e. does not represent single level plan-slice – refer to previous releases for further information.

Twin Bonanza Camp

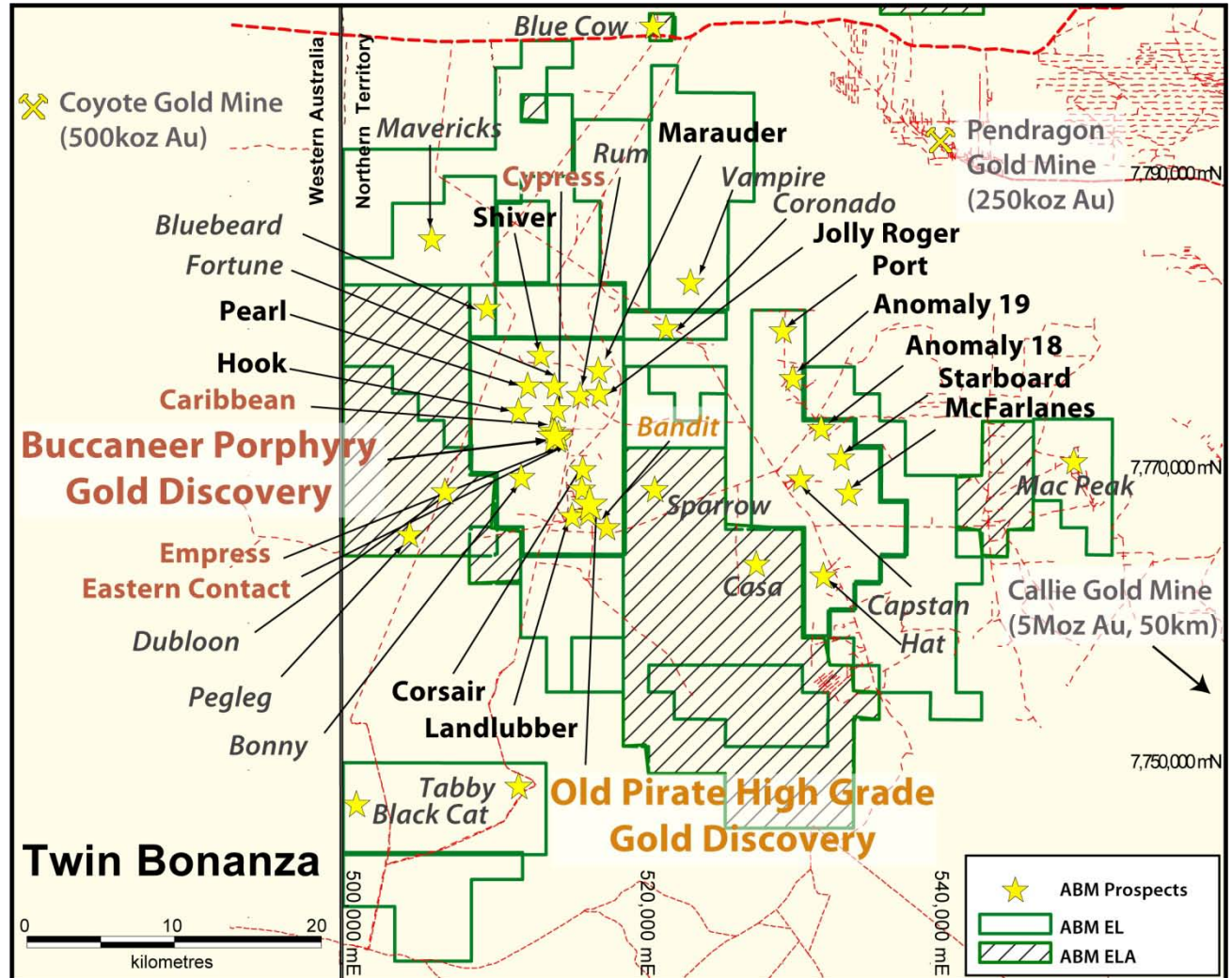
Buccaneer Gold Porphyry - EXTENSIONS & 2011 DISCOVERIES

- Caribbean Zone (NW of Buccaneer):
 - Porphyry hosted fracture / vein high sulphide (up to 10%),
 - **36m @ 2.06g/t gold inc. 11m @ 3.16g/t gold,**
 - **5m @ 27.55g/t gold inc. 2m @ 67.44g/t gold.**
- Cypress Zone:
 - Contact mineralisation inferred to possibly connect with Caribbean (Target 1200m long),
 - **26m @ 5.53g/t gold inc. 7m @ 20.13g/t gold,**
 - **87 metres averaging 1.13g/t gold inc 8m @ 7.43g/t gold.**
- West Sedimentary Zone (West Caribbean to Cypress):
 - Sedimentary hosted oxide gold mineralisation,
 - **16m @ 1.01g/t gold (OPEN).**
- Empress Zone (SE of Buccaneer):
 - Sedimentary hosted oxide mineralisation,
 - **43m @ 1.02g/t gold (OPEN).**
- Eastern Contact Zone:
 - Porphyry hosted zone,
 - **62 metres @ 1.23g/t gold.**



Twin Bonanza Camp - 30 Targets

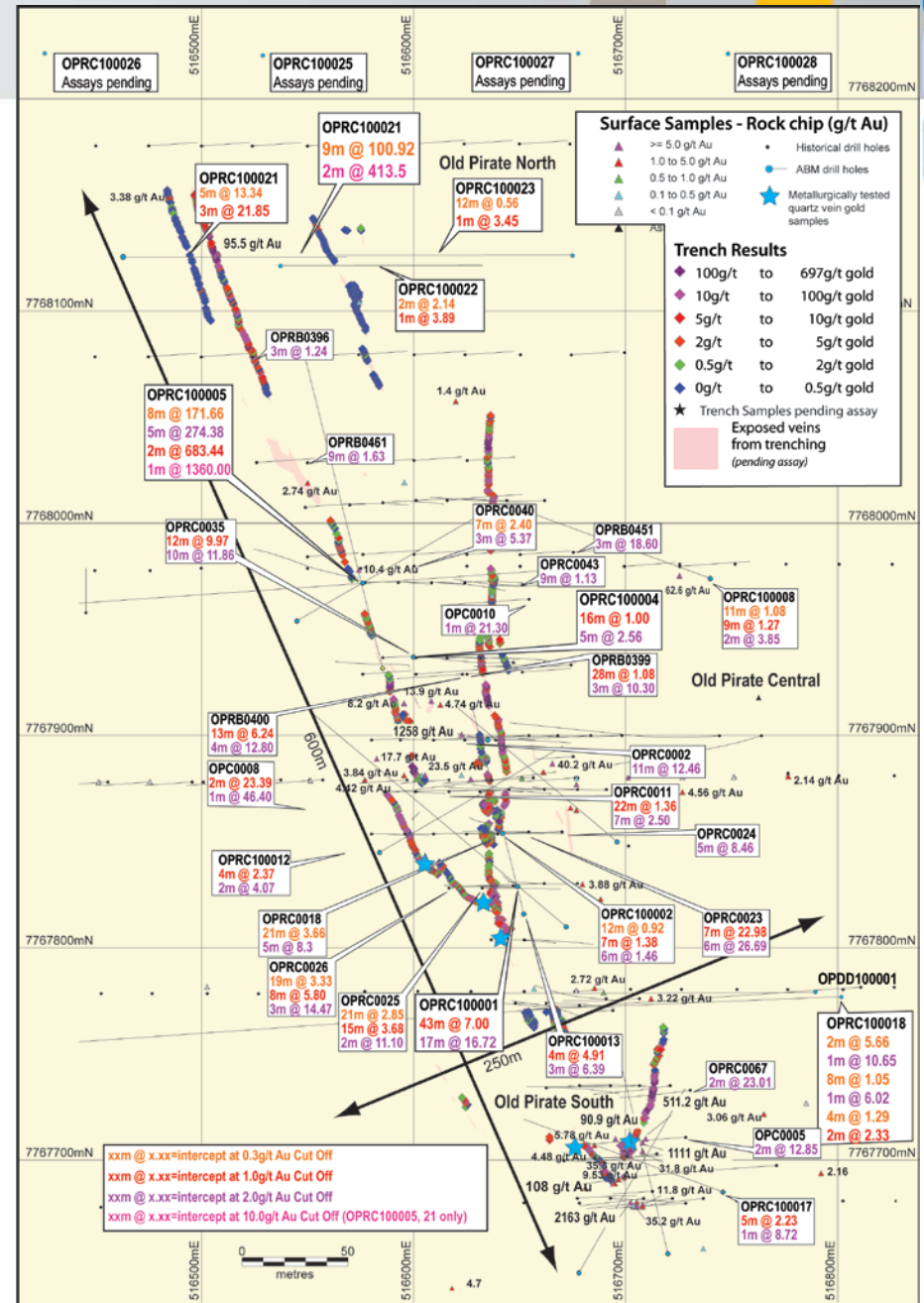
- The Trans Tanami Structure.
- ~80sq km of anomalism.
- >30 individual targets.
- Both Bulk Tonnage and High Grade.



Twin Bonanza Camp

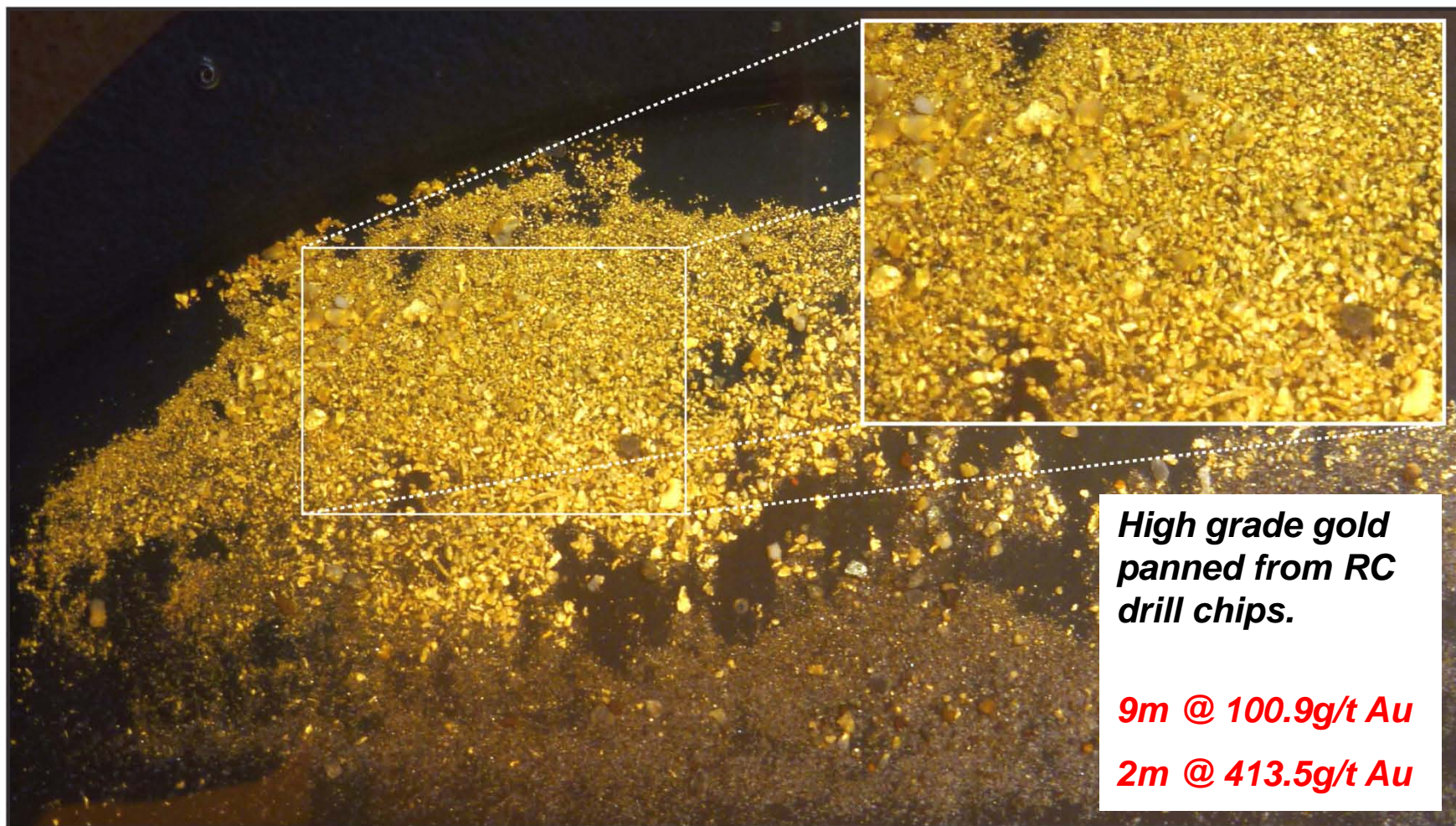
Old Pirate High Grade Gold Prospect

- 3km long gold anomaly located 1.8km from Buccaneer.
- 600m x 250m long central / south area.
- Drill Results include
 - **43m @ 7.0g/t gold inc:**
 - 17m @ 16.72g/t gold.
 - **5m @ 274g/t gold inc:**
 - 1m @ 1360g/t gold.
 - **9m @ 100.9g/t gold inc:**
 - 2m 413.5g/t gold.
 - **6m @ 26.69g/t gold,**
 - **7m @ 22.98g/t gold,**
 - **10m @ 11.86g/t gold.**



Twin Bonanza Camp

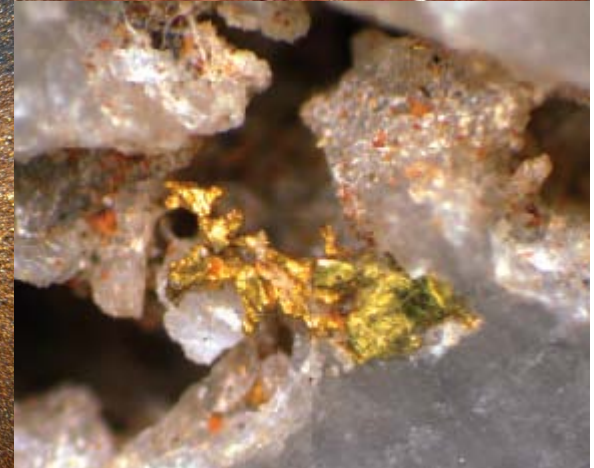
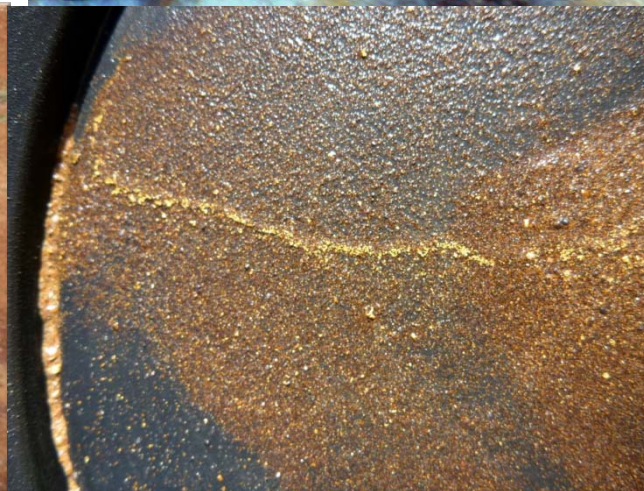
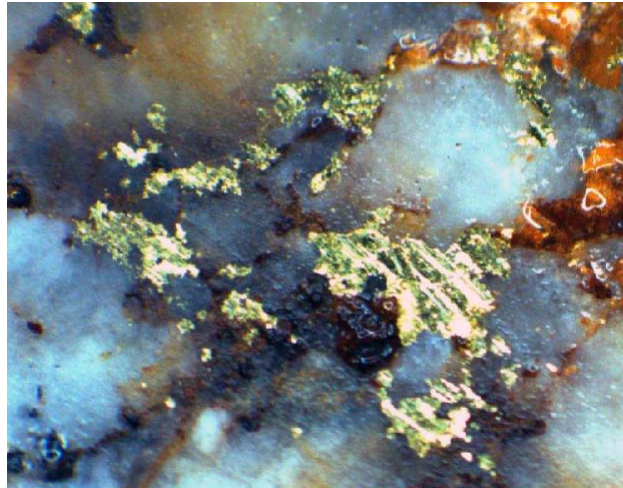
Old Pirate Northern Extensions



Twin Bonanza Camp

Old Pirate High Grade Gold Prospect

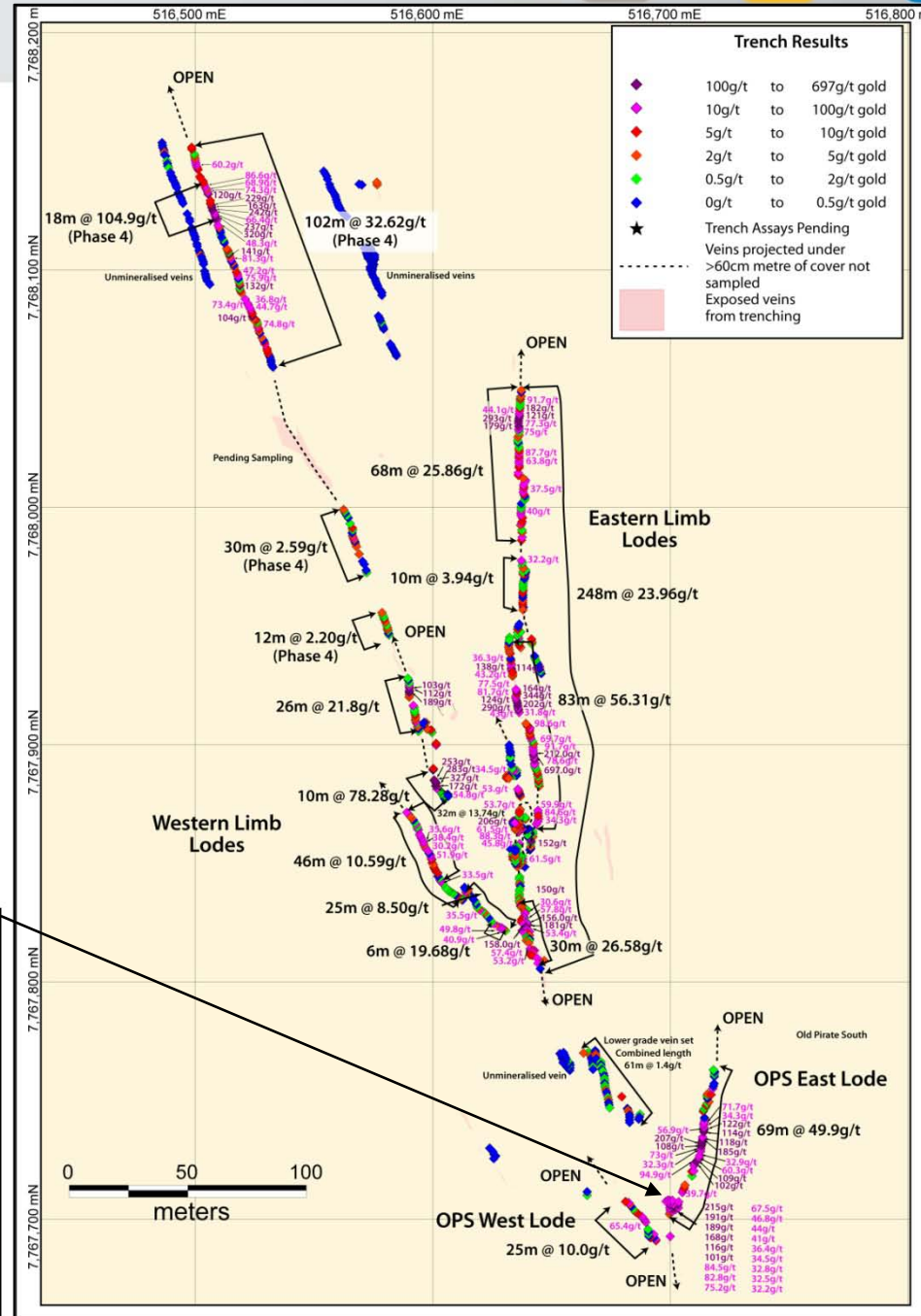
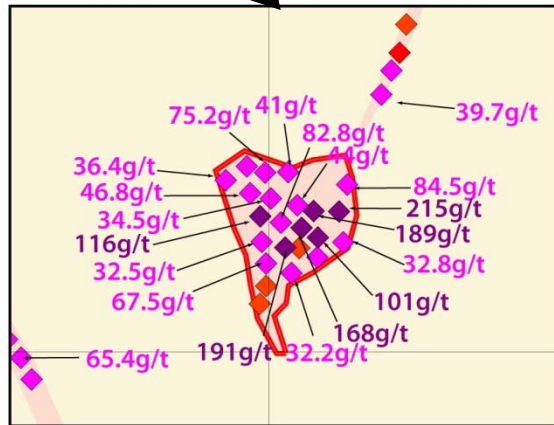
- >3km anomaly
- Metallurgically outstanding:
 - 85.4% recovery from simple gravity concentration.
 - 99.5% recovery from combined gravity concentration + cyanide leach.



Twin Bonanza

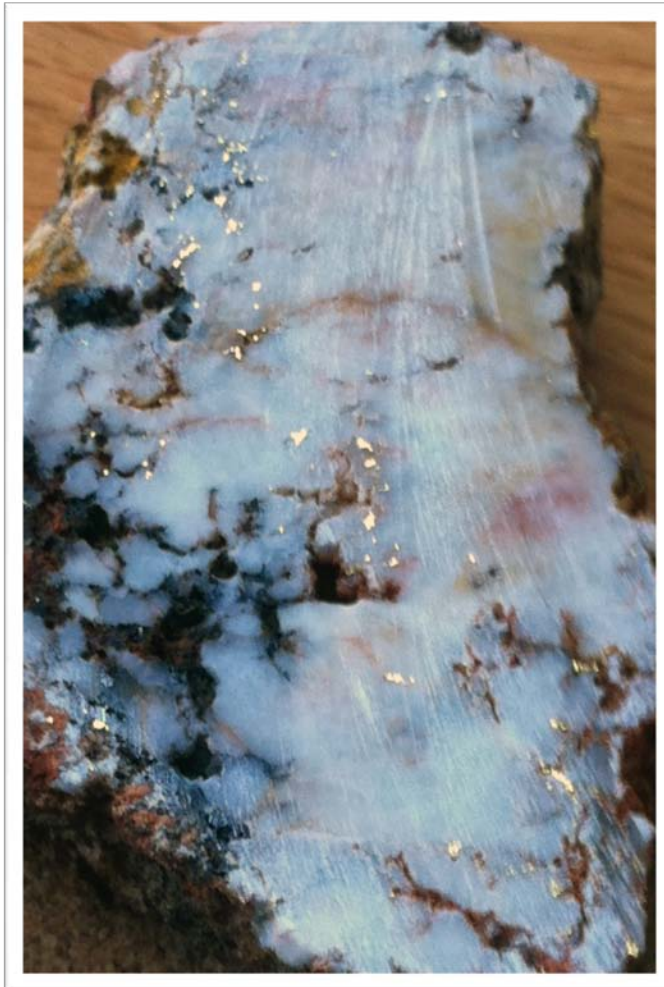
Old Pirate High Grade Gold Prospect

- Longitudinal trenching results veins 0.3 to 6m wide.
- Overall 726m combined strike length av. 24.01g/t gold.
- Open in several directions + other known veins not outcropping.
 - 102m strike length av. 32.62g/t gold.
 - 83m strike length av. 56.31g/t gold.
 - 30m strike length av. 26.58g/t gold.
 - 46m strike length av. 10.59g/t gold.
 - 69m strike length av. 49.9g/t gold.
 - 6m x 6m reef av. 71.8g/t gold.



Twin Bonanza Camp

Old Pirate High Grade Gold Prospect – Longitudinal trenching results



Phase 1 + 2a + 2b + 3 + 4 Combined Old Pirate Bulk Trenching Statistics	
Total number of samples	704
Average weight per sample	3.96 kg
Total weight of samples	2790.35 kg
Minimum grade (Au g/t)	0.002 g/t gold
Maximum (Au g/t)	697 g/t gold
Total samples >10g/t, re-assayed using Fire Assay / AA25 ore-grade method	204 (out of 704) averaging 73.12 g/t gold
Total samples >100g/t, re-assayed using AA25 over limit dilution method	49 (out of 704) averaging 188.51 g/t gold
Total area of vein exposed in Phase 1, 2a, 2b, 3, 4	799.42 square metres
Arithmetic mean (average) of assays	22.66 g/t gold
Weighted mean (average weighted by sample weight) of assays to gain overall grade of quartz sampled.	24.01 g/t gold

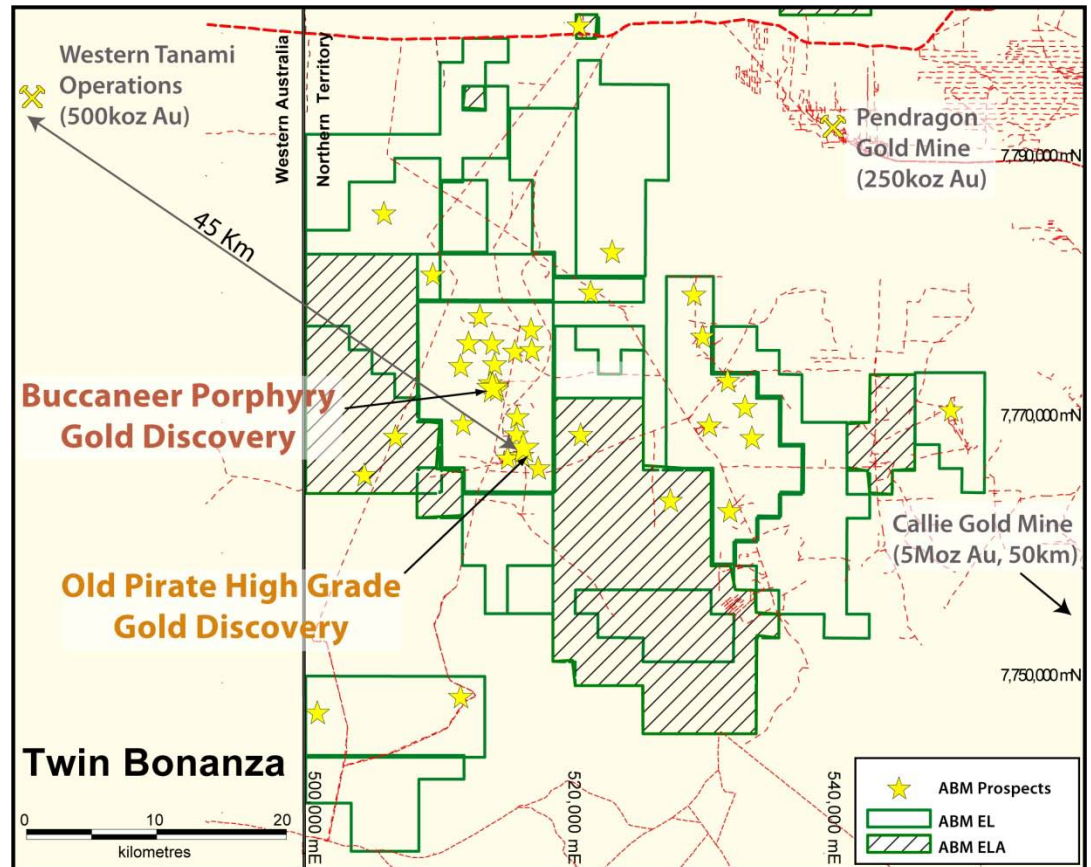
← Surface Quartz Gold Sample length 8cm.

Twin Bonanza Camp

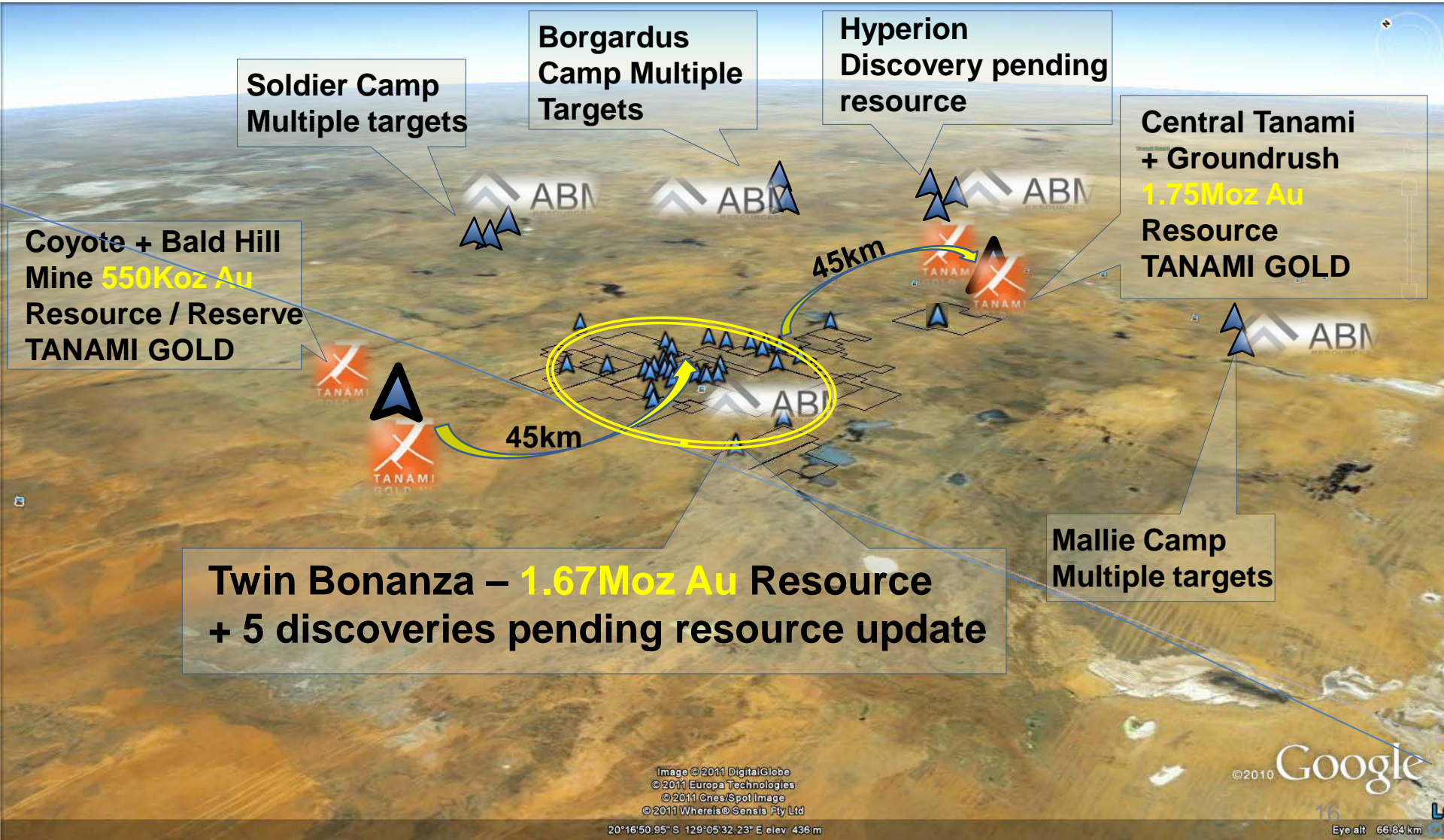
Old Pirate High Grade Gold Prospect – MoU Signed with Tanami Gold NL

ABM and Tanami Gold Memorandum of Understanding

- To jointly investigate the possibility of processing high grade material from Old Pirate at the Coyote Mine / Western Tanami Operations.
- 45km trucking distance.
- Will be based on:
 - Initial Resource (due soon),
 - Further resource drilling and trenching scheduled April – June 2012,
 - Mid-year resource upgrade a possibility.



Emergent District: ABM Resources and Tanami Gold = ~4Moz Au Resource District and Growing

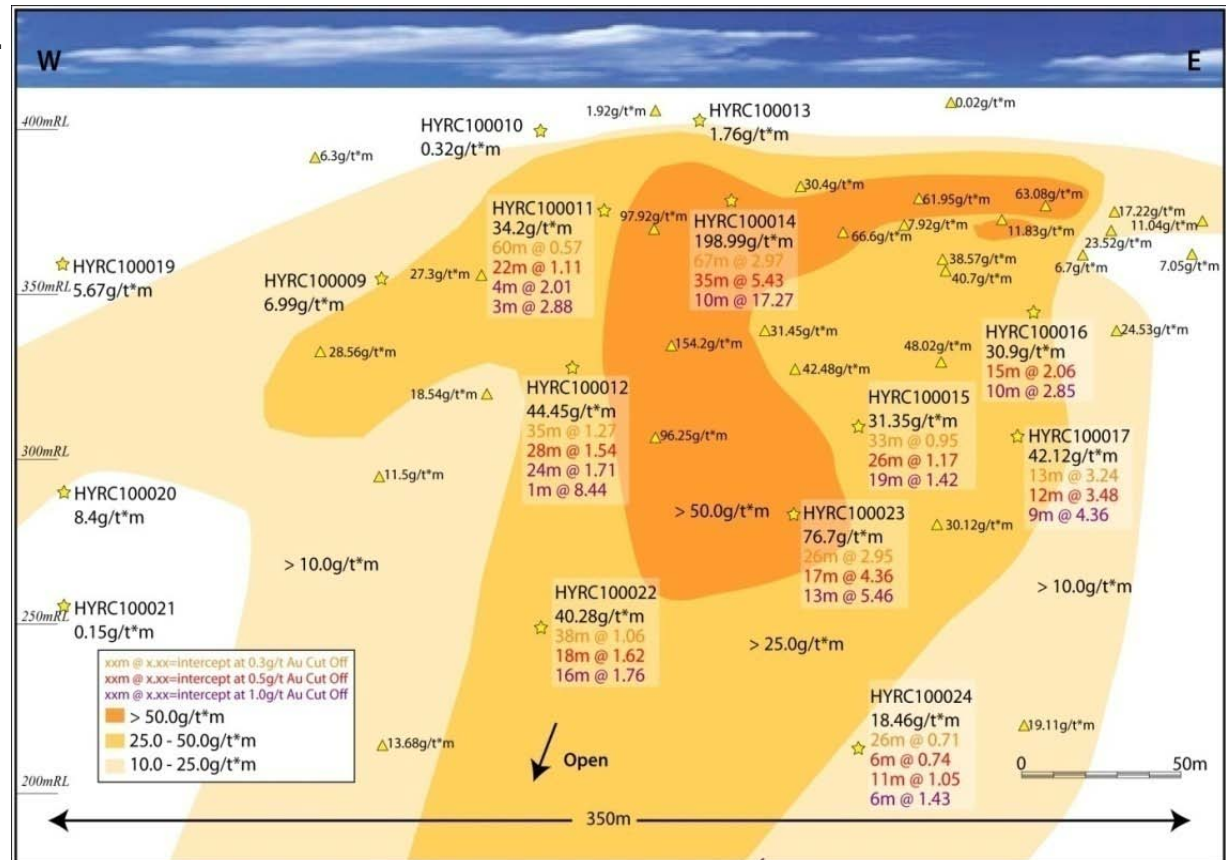


Hyperion Gold Project

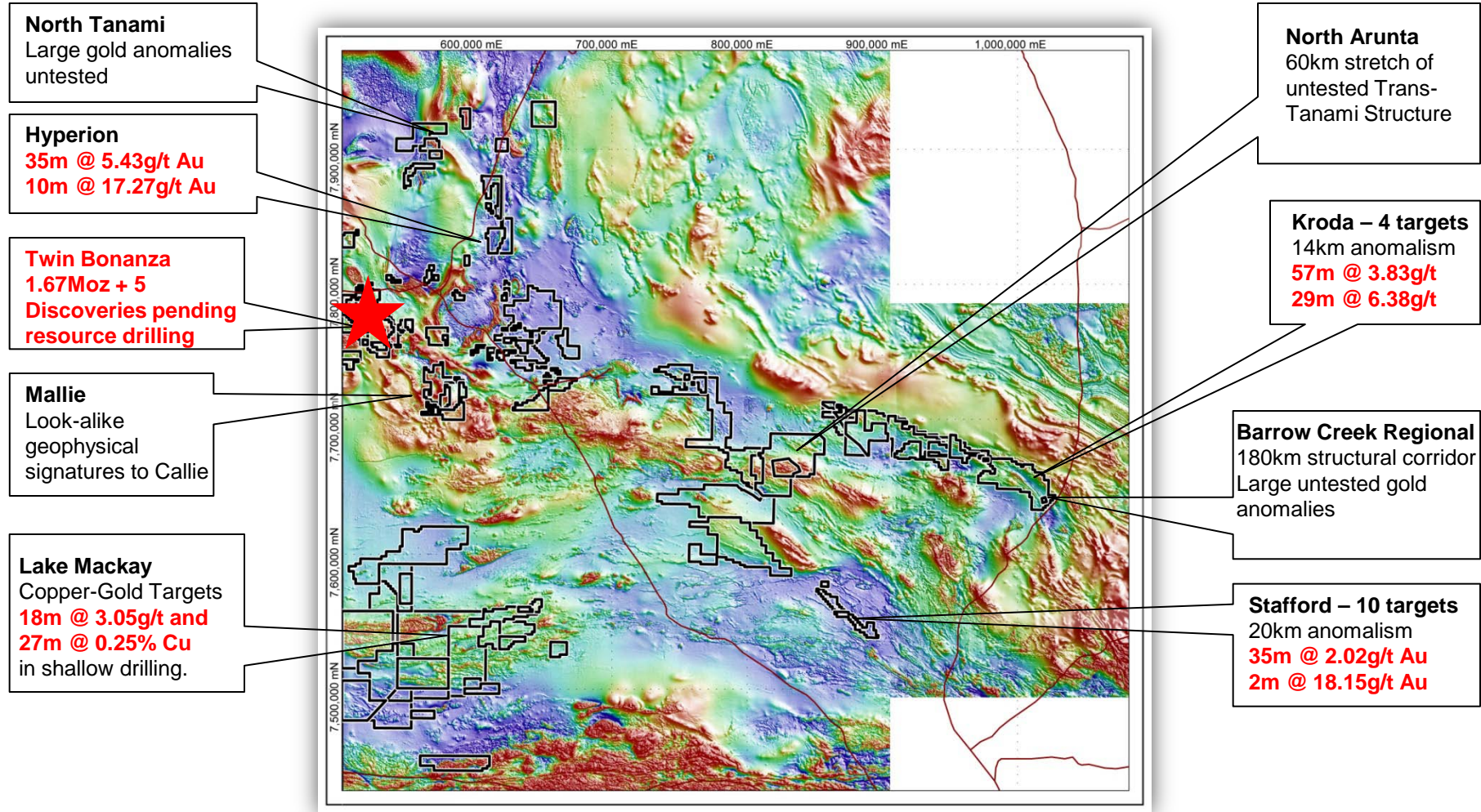
18km from Tanami Gold's Groundrush Deposit.

- 5 Prospects including 2 discoveries.
- Hyperion Central:
 - 400m long zone confirmed from surface to depths ~300m.
 - 35m @ 5.43g/t gold inc:
 - 10m @ 17.27g/t gold.
- Hyperion South Drill Results inc:
 - 200m long zone from surface to depths ~200m.
 - 13m @ 10.41g/t gold inc:
 - 3m @ 36.03g/t gold.
 - 22m @ 2.57 inc:
 - 11m @ 4.29g/t gold.

RESOURCE WORK UNDERWAY



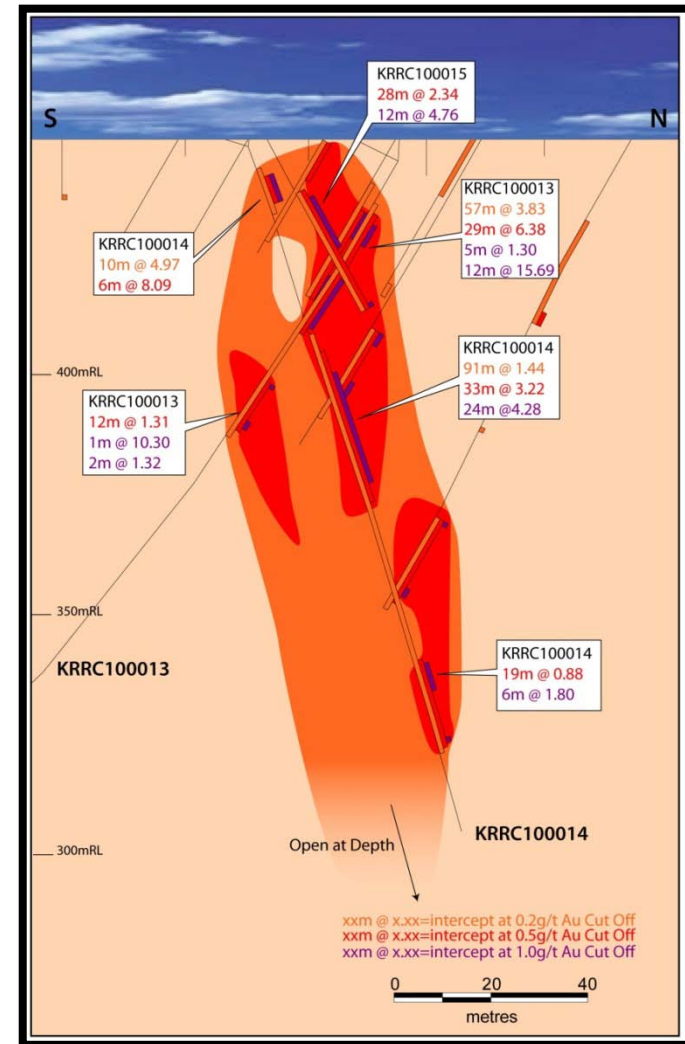
Other Regional Projects



Kroda Gold Project

18km from Stuart Highway + Rail + Gas.

- 14 km of near surface anomalism, gold + base metal potential.
- 4 individual targets.
- Kroda 3:
 - 400m strike main trend.
 - 125m strike high grade pipe.
 - Drill Results:
 - 57m @ 3.83g/t gold inc:
 - 29m @ 6.38g/t gold inc:
 - 12m @ 15.69g/t gold.
 - 91m @ 1.44g/t gold inc:
 - 33m @ 3.22g/t gold inc:
 - 24m @ 4.28g/t gold.



Summary

The Company...

Strong Management.
Passionate exploration team.
Flexible and highly mobile
setup.
Focused on GOLD and
GOLD-COPPER.

The Assets...

Five new Discoveries and
1.67Moz Resource pending
update.
~60 Regional Targets.
Largest junior gold land
holding in Australia.
Controlling the upside of the
most underexplored gold
belt in the Country.

The Future...

Constant stream of drill
results and resource
updates.
Advancing Twin Bonanza
Gold Camp.
Drilling early and deep.
Aggressive exploration
approach, running multiple
rigs simultaneously at
multiple locations.

COMING SOON....

RESOURCE UPDATE ON BUCCANEER (INC CARIBBEAN, CYPRESS, EAST CONTACT) + OLD PIRATE + HYPERION PENDING COMPLETION NEAR TERM.

FIELD SEASON TO RECOMMENCE APRIL WITH TRENCHING, DRILLING AND REGIONAL WORK WITH CONSTANT STREAM OF RESULTS FROM APRIL 2012.

ECONOMIC STUDIES AT OLD PIRATE – TARGETING SHORT TERM PRODUCTION SCENARIOS.

Thank you.

For Further Information Please Contact ABM Resources

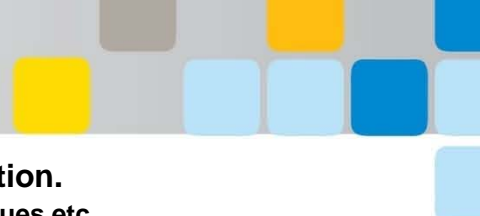
Managing Director – Darren Holden

CFO / Company Secretary – Jutta Zimmermann

Investors Relations Coordinator – Berdine Mastaglia

www.abmresources.com.au

Email admin@abmresources.com.au, Tel +61 8 9423 9777



Appendix 1: List of ASX announcements relating to technical results in this presentation.

Please refer for intercept calculation method, resource estimation, assay results and sampling techniques etc.

12/03/2012	Hyperion Drill Results show wide mineralised zones	02/09/2011	Broadcast - ABM Gold Assays over 400 Grams per Tonne
07/03/2012	Latest Results Extend Eastern Contact Zone	31/08/2011	Old Pirate Northern Extensions High Grade Drill Results
28/02/2012	Hyperion Best Ever Intercept 35m @ 5.43 g/t Gold	24/08/2011	Drilling Commences at Lake Mackay Copper-Gold Targets
08/02/2012	Old Pirate Trenching Extends to 726 metres @ 24.01g/t Gold	17/08/2011	Caribbean Zone and Buccaneer Deposit Significantly Extended
20/01/2012	ABM and Tanami Gold enter Memorandum of Understanding	10/08/2011	Updated Investor Presentation
20/01/2012	TAM: Tanami Gold NL and ABM enter MOU	09/08/2011	Broadcast Spectacular Gold at Old Pirate Northern Extensions
19/01/2012	Impressive Drill Results from Buccaneer Porphyry	08/08/2011	Spectacular Gold at Old Pirate Northern Extensions
18/01/2012	Cypress Zone Drill Results 8m@7.43g/t Au within 87m@1.13g/t	01/08/2011	Further Extensional Buccaneer Drill Results
5/01/2012	Old Pirate Trenching Update - 582m strike @ 23.98g/t Gold	18/07/2011	Further Extensions at Buccaneer and New Porphyry Discovery
23/12/2011	BRR -ABM extends high grade trenching results at Old Pirate	04/07/2011	New Sedimentary Hosted Oxide Gold Discovery at Twin Bonanza
22/12/2011	Old Pirate Trenching Extends to 427m Strike @ 21.85g/t Gold	20/06/2011	Drilling Commences at the Kroda Gold Project
5/12/2011	Technical and Corporate Update Presentation	17/06/2011	Broadcast -ABM hits New Gold Zone and Extends Mineralisation
30/11/2011	Broadcast - MD talks Gold from the Old Pirate	16/06/2011	Further Success at Buccaneer - Discovery at Caribbean Zone
29/11/2011	High Grade Old Pirate Phase 2a Trench Results	09/06/2011	First 2011 Drilling Extends Buccaneer
28/11/2011	Twin Bonanza Drill Results Extending Caribbean to Cypress	10/05/2011	Updated Investor Presentation
24/11/2011	Historic Access Agreement Signed for Lake Mackay Regional	09/05/2011	Exploration Update Twin Bonanza Program Ahead of Schedule
24/11/2011	Lake Mackay Phase 1 Drill Results	27/04/2011	Extensional Drilling Underway at Buccaneer Western Zone
09/11/2011	Drilling Commences at Hyperion	04/04/2011	Metallurgical Tests Reveal High Quality Ore - 99.5% Recovery
24/10/2011	Further Buccaneer Drill Results	22/03/2011	Presentation - Twin Bonanza and 1.67 Moz Buccaneer Deposit
13/10/2011	Old Pirate Trenching Combined Strike Length 166m@19.17g/t Au	21/02/2011	Presentation - 1.67 Moz Gold - And We've Only Just Begun
11/10/2011	Buccaneer Extension 26m @ 2.9g/t within 18m @ 4.05g/t Gold	21/02/2011	Maiden Resource Estimation for Buccaneer
27/09/2011	Drilling at Kroda Confirms Second Discovery Camp in the NT	03/02/2011	Twin Bonanza Gold Camp Expands to 30 Targets
12/09/2011	New Discovery at Cypress Prospect with 26m @ 5.53g/t Gold	31/01/2011	New Targets at Twin Bonanza Gold Camp
07/09/2011	Old Pirate Northern Extensions Further High Grade Results		

Appendix 1: List of ASX announcements relating to technical results in this presentation.
Please refer for intercept calculation method, resource estimation, assay results and sampling techniques etc.

13/01/2011	Buccaneer Porphyry Delivers Impressive Results	18/01/2010	Exploration Update for Reynolds Range Project Area
11/01/2011	Drill Results from the Hyperion Gold Project	07/01/2010	ABM Provides Exploration Update for Lake Mackay Project
13/12/2010	Buccaneer Continues To Grow With Step Out Drilling		
15/11/2010	2010 Old Pirate Drilling and Screen Fire Assay Program		
04/11/2010	ABM adds second drill rig to NT exploration programs		
18/10/2010	Step Out Drilling at Buccaneer Delivers Excellent Intercepts		
22/09/2010	ABM Continues to Expand Buccaneer Gold Porphyry		
13/09/2010	Best Intersection at Buccaneer - 202m grading 1g/t Gold		
31/08/2010	Update Old Pirate High Grade Gold Prospect at Twin Bonanza		
19/08/2010	Buccaneer Porphyry Gold Drill Results Double Vertical Extent		
27/07/2010	Bonanza Grades at Old Pirate - 5 metres at 274 g/t Gold		
12/07/2010	Drill Results - 35m at 6.35g/t Au inc 8m at 21.78g/t Au		
07/07/2010	Exploration Update - Visible Gold at Old Pirate South		
15/06/2010	Exploration Update from Twin Bonanza		
24/05/2010	First Drill Results - High Grade Intercept Extends Sabre		
13/05/2010	Samples Return 20.3% Copper and 271 g/t Silver		
27/04/2010	ABM Resources Announces the Commencement of Drilling		
16/04/2010	Presentation - The Big 8		
31/03/2010	Newmont Transaction Complete - Prioritising 8 Discoveries		
16/03/2010	Kroda Gold Project - 6 Metres at 25.9g/t Gold		
09/03/2010	Hyperion Gold Project with 60 m at 2.57 g/t Gold		
02/02/2010	The Old Pirate High Grade Gold Project		
01/02/2010	Detail on the Twin Bonanza Porphyry Gold Project		
28/01/2010	Acquisition of Advanced Gold Prospects from Newmont		

Appendix 2: Buccaneer Gold Deposit Inferred Resource.
Refer release dated 21/02/2011 for further details.

Cut-off Grade (g/t)	Million Tonnes (Mt)	Gold Grade (g/t)	Contained Gold (Million Ounces (Moz))
0.2	65.8	0.79	1.67
0.5	36.9	1.01	1.19
1.1	8.7	2.01	0.56

Note – Million Tonnes (MT) rounded to 3 significant figures; gold grade rounded to 3 significant figures and Million Ounces (Moz) rounded to 3 significant figures. Refer to release dated 21/02/2011 for further details.