



Bligh Resources Limited

ACN 130 964 162

ASX Release

27 July 2012

Suite 804 Level 8,
84 Pitt St Sydney
New South Wales 2000
Tel: +61 2 9233 4677
Fax: +61 2 9239 0866

Contacts:

Robert Benussi
Bill Guy

Email:

info@blighresources.com.au

For the Latest News:

www.blighresources.com.au

Directors:

Noel Halgreen (Chairman)
Robert Benussi
Charles Guy
Hanjing Xu
Peiqi Zhang
Liming Niu (Alternate Director for Mr Xu)
Zhijie Li (Alternate Director for Mr Zhang)

Company Secretary

Adrian Di Carlo

Issued Capital:

Shares: 57,475,720
Unlisted Opts: 16,000,000
(Escrowed)

ASX: BGH

Currently Exploring for:

- Manganese
- Gold
- Copper

Current Projects:

- Kumarina
- Bootu Creek Two
- Grenfell
- Manilla
- Leonora

Leonora Gold Project WA

Exploration Update

Anomalies Gold Sample Assay Returned

- Near 1,000 soil samples taken at Diorite King Area
- Two soil anomalies detected at Diorite King Area
- 179 rock chip samples collected from Mt Davis Area peak value Au 2.66g/t

Bligh Resources Limited ("Bligh" or "Company") (ASX: BGH) is pleased to announce progress on the exploration activities at its Leonora gold exploration project in Western Australia. The Leonora prospect is divided into two prospective areas, the Diorite King and the Mt. Davis prospect, and covers approximately 49.0 km². Bligh's tenements are situated six kilometres southeast of the Tarmoola Gold Mine (Figure1) which has produced over 3 million ounces of gold.

The Company advanced its mapping and geophysical work by completing geochemical sampling programs over previously identified geophysical anomalies. In total nearly 1,000 soil samples (Diorite King Area) and 179 rock chip samples (Mt Davis area) were collected. Assay results returned peak values up to 2.66 g/t Au for Mt Davis and 647 ppb Au in soils at Diorite King.

Positive results for gold in soils opens up three new exploration zones. The rock sampling at Mt Davis defined a new zone via sample MD12039 and MD12040 (See Table 1). Both samples returned anomalous gold values from outcropping chert zones not tested by historical exploration with an estimated 300m of strike length.

At the Diorite King Area the soil sampling program was carried out over 6 grids (Attachment 1) (Table 2), returning peak gold values up to 647ppb Au. Grid 12-03 and 12-04 contained anomalous samples with well grouped values that define anomalous zones that will warrant further test-work.

Grid 12-03: 50 x 50m sampling in the vicinity of the gold hosting shear zone discovered in March 2012 by a prospector's party returned 4 samples presenting anomalous gold values of 14, 36, 88 and 89 ppb Au. This gold-in-soils anomaly is located at the northern edge of the survey and will require to be closed off by more soils sampling in order to define drill targets.

Grid 12-04: 50 x 90m infill sampling of existing previous soil sampling campaigns returned 15 samples with values over 10ppb Au including 6 with values over 20ppb Au (Attachment 2). These samples were located at the northern tip of the soils survey and identified a new soil anomaly which remains open to the North, with an estimated 600m of strike length identified to date.

Bligh is encouraged by the geochemical work with anomalous gold assays returned and gold anomalies identified that require further exploration. Grid 12-04 is located near the historical Little Wonder Workings with the anomaly running north south, parallel to line of old workings.

"We will continue to keep shareholders updated as our exploration activities progress".

Further information:

Bill Guy: 0408 345 378 - Managing Director- Exploration

Released through Ben Jarvis, Six Degrees Investor Relations: 0413 150 448

Competent Person- Charles W Guy

The information in this announcement that relates to Exploration Results is based on information compiled by Mr Charles William Guy who is a Member of the Australian Institute of Geoscientists. Charles William Guy has sufficient experience which is relevant to the style of mineralisation and type of deposit under consideration and to the activity that he is undertaking to qualify as a Competent Person as defined in the 2004 Edition of the 'Australasian Code for Reporting of Exploration Results, Mineral Resources and Ore Reserves'. Charles William Guy consents to the inclusion in the announcement of the matters based on his information in the form and context in which it appears. Charles William Guy is a full time employee of Bligh Resources Limited in the position of Managing Director- Exploration.

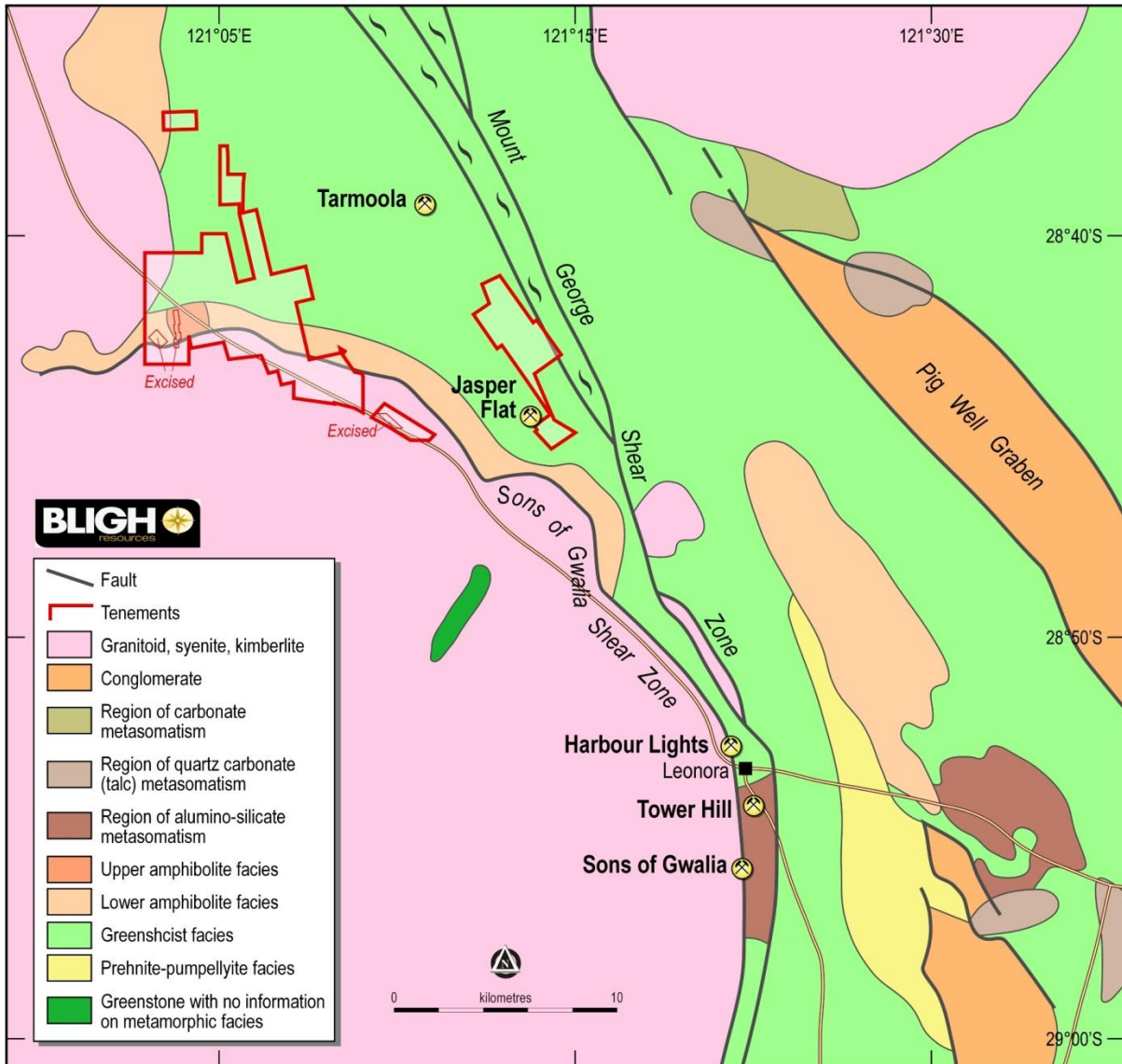


Figure 1 Location Map

A detailed rock chips sampling survey was conducted over the 6 Mount Davis “zones of interest”.

Table 1: Rockchip Highlights from Mt Davis Area

Sample number	Sample description	Au (g/t)
MD12012	Heavily weathered, intensely sheared meta-volcanics (Shear zone).	0.05
MD12039	Cherty meta-basalt. (Chert)	0.06
MD12040	Banded chert. (cherty meta-sediments).	1.26
MD12072	Meta-basalt with vuggy quartz banding.	0.43
MD12098	Brecciated cherty meta-sediments (breccia part of Mt Davis thrust)	0.25
MD12100	Intensely sheared schistose rock (shear zone)	0.42
MD12101	Brecciated chert with quartz veining (breccia)	2.66

- samples returning gold assays >0.05ppm

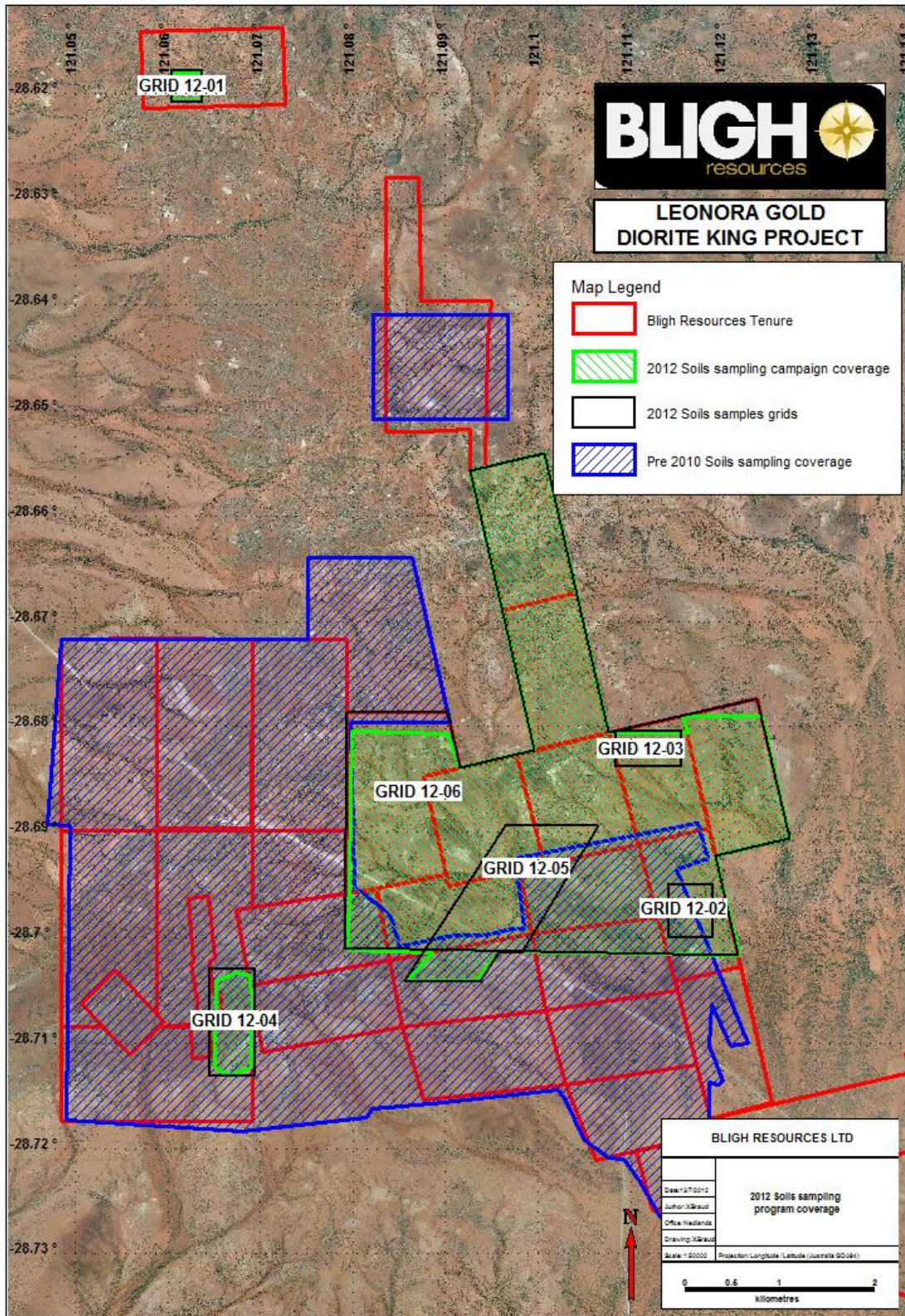
- 179 grab rock samples were collected and submitted to ALS Perth to be assayed for a suite of 52 elements. (Digestion by Aqua regia, finish by ICP-MS)
- Of the 179 rock samples, 7 have gold grades >0.05ppm (g/t), of which 3 have grades >0.1ppm and 2 have grades >1.0ppm (gold values and sample descriptions are presented in table 1).

Table 2: Summary of soils sampling program, Diorite King Area

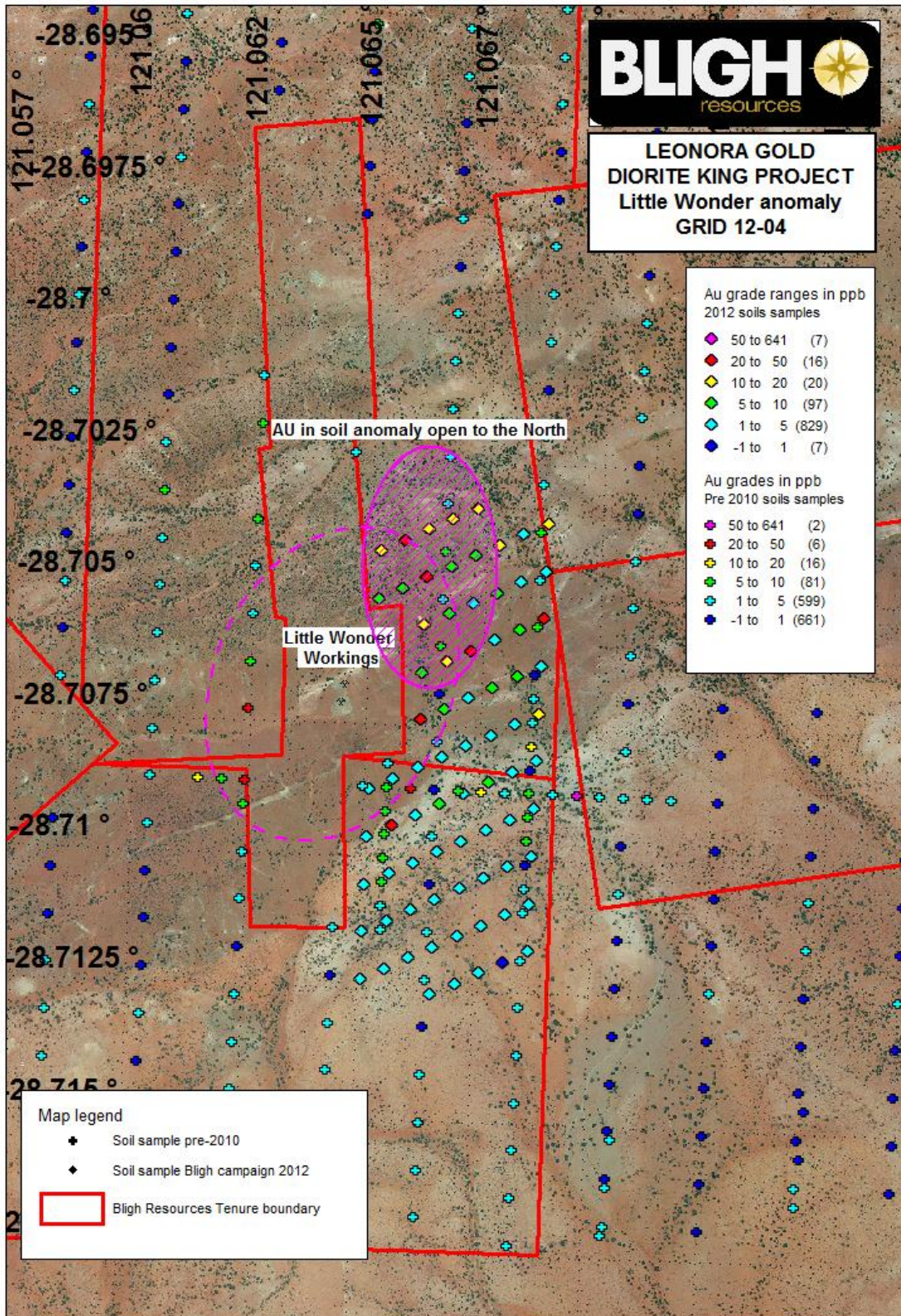
• Samples spacing • (samples x line)	• Number of samples	• Soils grid number and target covered
• 50 x 50m	• 49	• GRID 12-01. SGC potential zone of alteration DIK_MT12, coincident structure and magnetic anomaly
• 50 x 50m	• 82	• GRID 12-02 SGC potential zone of alteration DIK_MT07. Coincident structure, magnetic anomaly and potassic alteration inferred from aster images.
• 50 x 50m	• 92	• GRID 12-03. Discovery in a shear zone by prospectors of an alleged 40oz of gold in March 2012.
• 50 x 90m	• 76	• GRID 12-04. Infill of existing soils anomaly. Further test potential alteration zone DIK_MT13 (outside Bligh tenure) east of “Little Wonder” workings
• 100 x 100m	• 158	• GRID 12-05. Test potential alteration zone DIK_MT02 and a potential anticline structure extending from Tarmoola mine structure.
• 100 x 200m	• 519	• GRID 12-06. Test potential alteration zones DIK_MT15, DIK_MT03, DIK_MT05 and DIK_MT08, as well as covering ground never previously explored.

Samples have been submitted to ALS Perth to be analysed for a suite of 52 elements by ICP-MS.

- 12-05: 100x100m survey returned strong gold values related to the presence of old battery sands close-by which have likely been remobilised in the drainage.
- 12-06: 100x200m survey returned isolated “single points” anomalies which will be the object of a “ground-truthing” exercise during the next field campaign.
- Soil samples < 5ppb gold were consider background



Attachment 1. Diorite King Soil Grids



Attachment 2. Diorite King Soil Grid 12-04