

ROCKLANDS COPPER PROJECT (CDU 100%)

FAIRFIELD DRILLING PROGRAMME UPDATE

NEW DIAMOND DRILLING CONTINUES TO INTERSECT MASSIVE AND SEMI-MASSIVE CHALCOCITE, CHALCOPYRITE AND PYRITE

(chalcocite contains 79.9% copper metal, chalcopyrite contains 34.6% copper metal)

New Diamond Drill Hole DODH447 Intersects Wides Zones of High-grade Copper-rich Mineralisation Down-dip from Diamond Drill Hole DODH446 (21m @ 4.41% CuEq)

New Diamond drill hole DODH447

30m @ 3.28% CuEq*

(from 73m)

Including

15m @ 6.05% CuEq*

(from 77m)

Including

7m @ 9.38% CuEq*

(from 80m)

** Gold results not included (gold assays pending)...see full details of intervals page 2*

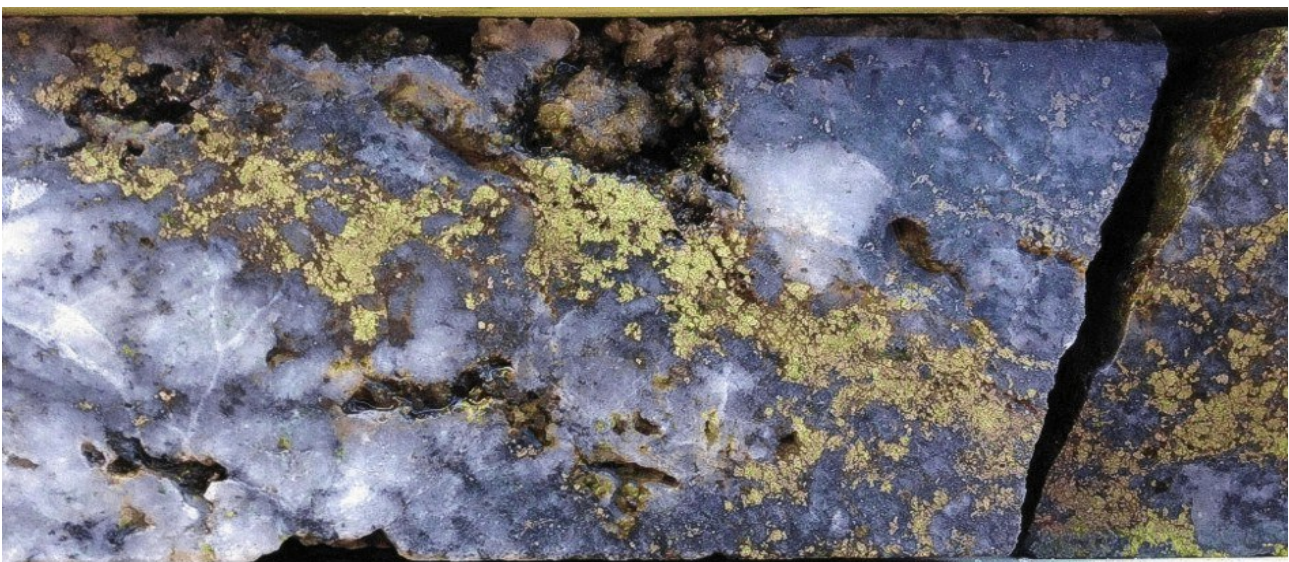


Figure 1: Example of high-grade drill core intersected in DODH447 at Fairfield (approximately 85.5m). Semi-massive chalcocite (chalcocite contains 79.9% copper metal), and minor chalcopyrite (chalcopyrite contains 34.6% copper metal), bornite (bornite contains 63.3% copper metal) and pyrite (cobalt is associated with pyrite at Fairfield).

Diamond Drilling Continues to Hit Massive and Semi-massive Chalcocite, Chalcopyrite and Pyrite.

Fairfield is located in the north-west of the Company's mining lease (ML90177) approximately 2.5km from the flagship Las Minerale orebody and will possibly add to high-grade inventory to be processed through the Rocklands Processing Plant. Upgrading the project status means assets will now be allocated to accelerate exploration and delineation of the mineralised zone, including a dedicated drill rig over the coming months, with the view to obtaining sufficient information to support a resource estimate to at least indicated category as soon as possible.

Details of results from diamond drill holes DODH447 and DODH446;

DODH447		Width	Cu Eq	Cu %	Co ppm	Au g/t	From	To
Intersection	1	30m	@ 3.28%	2.65%	650	<i>pending</i>	73m	- 103m
<i>including</i>		15m	@ 6.05%	4.95%	1210	<i>pending</i>	77m	- 92m
<i>including</i>		10m	@ 7.93%	6.47%	1520	<i>pending</i>	77m	- 87m
<i>including</i>		7m	@ 9.38%	8.07%	1460	<i>pending</i>	80m	- 87m

DODH446		Width	Cu Eq	Cu %	Co ppm	Au g/t	From	To
Intersection	1	21m	@ 4.41%	3.09%	1160	0.26	66m	- 87m
<i>including</i>		17m	@ 5.28%	3.71%	1370	0.31	67m	- 84m
<i>including</i>		10m	@ 7.24%	4.98%	1980	0.39	67m	- 77m

Cut-off grade of 0.2% Cu, or a copper equivalent grade of 0.35%, with an allowance of up to 4m of internal waste.

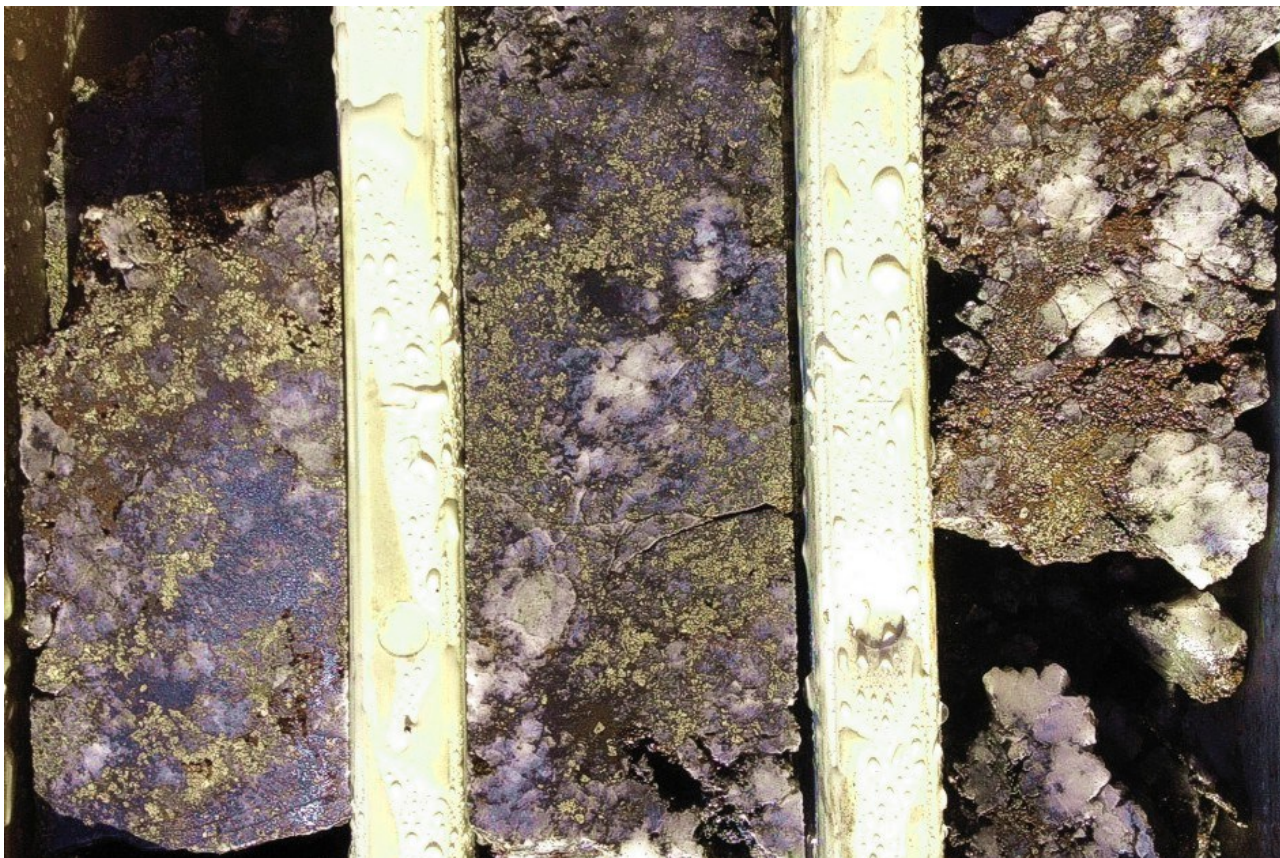


Figure 2: Example of high-grade drill core intersected in DODDH447 at Fairfield (approximately 84m - 86.4m). Highly-weathered semi-massive chalcocite and chalcopyrite (chalcocite contains 79.9% copper metal, chalcopyrite contains 34.6% copper metal), bornite (bornite contains 63.3% copper metal) and pyrite (cobalt is associated with pyrite at Fairfield)

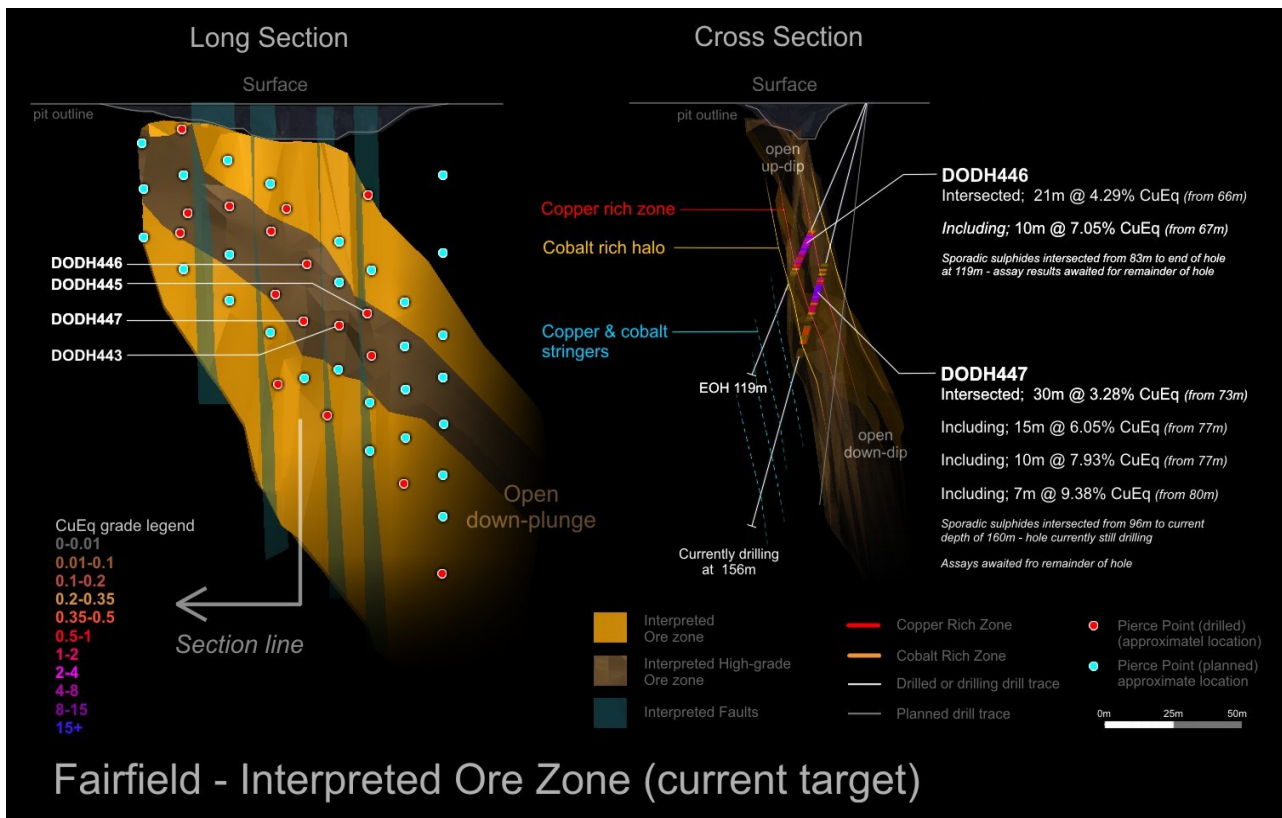


Figure 3: Developing structural and geological interpretation of the Fairfield mineralised zone, showing potentially truncated, fault-controlled offsetting of mineralisation. Previous drilling was oriented parallel to the interpreted faults and is likely to have missed them. The above long-section shows the interpreted plunge of the mineralised zone and the cross section shows the near-vertical dip. A high-grade zone, initially interpreted to be a supergene blanket, appears to continue down the apparently plunging mineralised zone, as confirmed from the current drill hole, opening up considerable potential for additional high-grade mineralisation down-plunge.

The results of the recent drilling programme have seen some of the highest grade copper intersections yet seen at the Rocklands Group Copper Project since the discovery of the high grade Las Minerale and Rocklands South orebodies. The latest results confirm that a significant, and very high-grade zone of copper/cobalt mineralisation exists at the Fairfield Prospect, of sufficient grade and scale to warrant inclusion in the Rocklands Group Copper Project resource inventory.

Mineralisation at Fairfield identified to date appears to extend for approximately 180m down-plunge (see long-section Figure 3), 150m along strike (see plan Figure 5), at least 90m down-dip (see cross-section Figure 3), and between 8-20m wide, and remains open in all directions. A very-high grade zone exists



Figure 4: Example of high-grade drill core intersected in DODH446 at Fairfield (approximately 69m). Massive and semi-massive chalcocite and chalcopyrite (chalcocite contains 79.9% copper metal, chalcopyrite contains 34.6% copper metal).

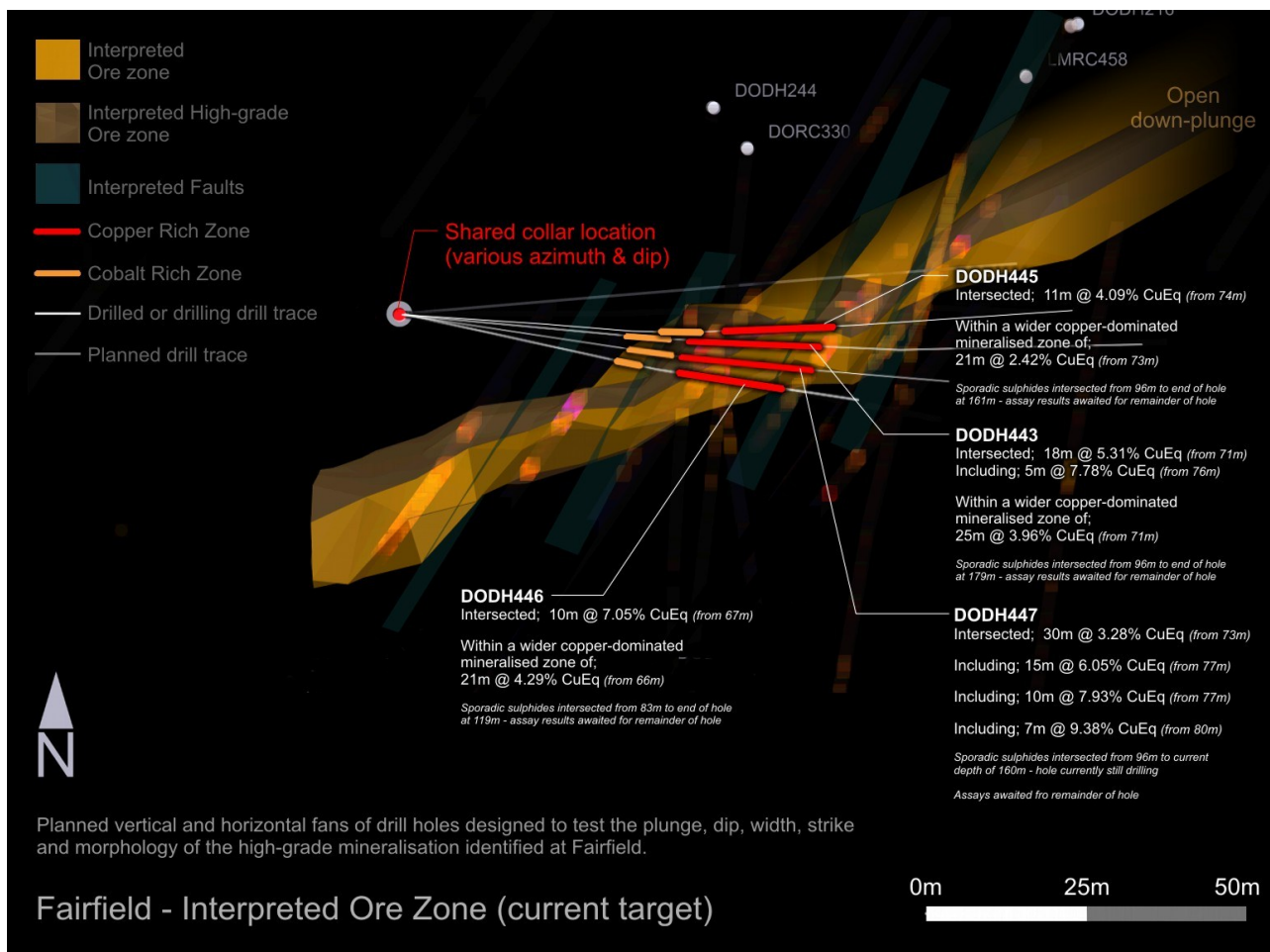


Figure 5: Developing structural and geological interpretation of the Fairfield mineralised zone, showing potentially truncated, fault-controlled offsetting of mineralisation. Previous drilling was oriented parallel to the interpreted faults and as such, are likely to have missed them.

within this mineralised outline, that appears to plunge to the east and remains open down-plunge. A series of structures and offsetting shear-zones have been identified that have previously added to the complexity of defining the mineralised zone at Fairfield.

Success with the current drilling programme is seen as an important development at Fairfield, as it potentially opens a new east-plunging high-grade copper zone not identified in previous drilling.

Recent drilling also appears to have successfully tested;

- The existence of north-south running fault/shear zones that were predicted to strike parallel to the orientation of previous drilling, suggesting these faults may have previously been missed. Faulting is seen as a potentially important component of the deposition of mineralisation at Fairfield.
- The existence of an offset and widening of mineralisation, within an area previously thought to be an uninterrupted, relatively consistent east-west striking mineralised structure at Fairfield.
- The existence of high-grade mineralisation in a continuous east-plunging zone, previously thought to be characterised by separated, non-continuous zones of high-grade supergene enrichment (ie, chalcocite blankets)



Figure 6: Example of drill core from approximately 83m - 87m in diamond drill core DODH447 which assayed 5m @ 9.92% CuEq (8.96% Cu, 1200ppm Co, Au pending) at Fairfield. Supergene chalcocite, chalcopyrite, bornite and pyrite in breccia matrix. Chalcocite contains 79.9% copper metal, chalcopyrite contains 34.6% copper metal, bornite contains 63.3% copper metal and cobalt is usually associated with pyrite at Fairfield.

Drilling at Fairfield will continue for the next few months, with the view to evaluating the scale and grade of the high-grade zone to an extent appropriate to support a resource estimate to be calculated.

The Fairfield mineralised structure is complex and dominated by sulphides (chalcocite, chalcopyrite and pyrite). There are several shear zones that make up the mineralised structure at Fairfield which has led to poor ground conditions for drilling. The ground is highly broken with puggy clays throughout the structure which has caused issues orientating the structures through conventional drill core orientation methods. It



Figure 7: Example of drill core from approximately 83m in diamond drill hole DODH446 at Fairfield. Semi-massive chalcocite in highly-weathered quartz breccia (chalcocite contains 79.9% copper metal). Voids show traces of soft sooty chalcocite, thought to have been washed out via high-pressure drilling fluids often required when drilling through vuggy or highly porous matrix.

Previous results at Fairfield include;

DODH445		Width	Cu Eq	Cu %	Co ppm	Au g/t	From	To
Intersection	1	21m @	2.43%	1.60%	696	0.20	73m	- 94m
<i>including</i>		11m @	4.11%	2.67%	1200	0.35	74m	- 85m
DODH443		Width	Cu Eq	Cu %	Co ppm	Au g/t	From	To
Intersection	1	25m @	3.96%	2.56%	1140	0.39	71m	- 96m
<i>including</i>		18m @	5.31%	3.42%	1540	0.53	71m	- 89m
<i>including</i>		5m @	7.78%	5.47%	1670	1.29	76m	- 81m
DODH446		Width	Cu Eq	Cu %	Co ppm	Au g/t	From	To
Intersection	1	21m @	4.41%	3.09%	1160	0.26	66m	- 87m
<i>including</i>		17m @	5.28%	3.71%	1370	0.31	67m	- 84m
<i>including</i>		10m @	7.24%	4.98%	1980	0.39	67m	- 77m
DODH320		Width	Cu Eq	Cu (%)	Co ppm	Au g/t	From	To
Intersection	1	23m @	4.19%	1.50%	2270	0.22	48m	- 71m
<i>including</i>		7m @	6.54%	4.32%	1840	0.58	61m	- 68m
DODH245		Width	Cu Eq	Cu %	Co ppm	Au g/t	From	To
Intersection	1	15m @	1.70%	0.87%	688	0.12	114m	- 129m
<i>Including</i>		7m @	3.10%	1.74%	1130	0.25	118m	- 125m
LMRC458		Width	Cu Eq	Cu %	Co ppm	Au g/t	From	To
Intersection	1	22m @	1.30%	0.76%	454	0.08	87m	- 109m
<i>Including</i>		5m @	3.78%	2.37%	1210	0.24	89m	- 94m
DORC330		Width	Cu Eq	Cu %	Co ppm	Au g/t	From	To
Intersection	1	10m @	3.91%	2.47%	1200	0.33	56m	- 66m
<i>Including</i>		6m @	5.41%	3.68%	1440	0.46	59m	- 65m
BP002		Width	Cu Eq	Cu %	Co ppm	Au g/t	From	To
Intersection	1	5m @	3.64%	2.76%	788	0.20	67m	- 72m
DODH242		Width	Cu Eq	Cu %	Co ppm	Au g/t	From	To
Intersection	1	10m @	3.08%	1.82%	1080	0.19	101m	- 111m
<i>Including</i>		3m @	7.01%	5.44%	1350	0.54	105m	- 108m

Cut-off grade of 0.2% Cu, or a copper equivalent grade of 0.35%, with an allowance of up to 4m of internal waste.

has also lead to the termination of holes prior to their desired target. The orientation of current drilling has alleviated the issue of achieving the target depths.

The drill programme will now drill a series of fans in the current orientation across an interpreted east plunging high grade zone in sections moving in an eastward direction. This will allow the team to better ascertain the angle, depth and true width of the plunging high grade zone.

The Fairfield prospect has only seen sporadic exploration over the years, typically as drill rigs became available from higher-priority areas of the project. Previous exploration success has highlighted a zone of mineralisation of sufficient scale to warrant inclusion in the Rocklands Group Copper Project Resource

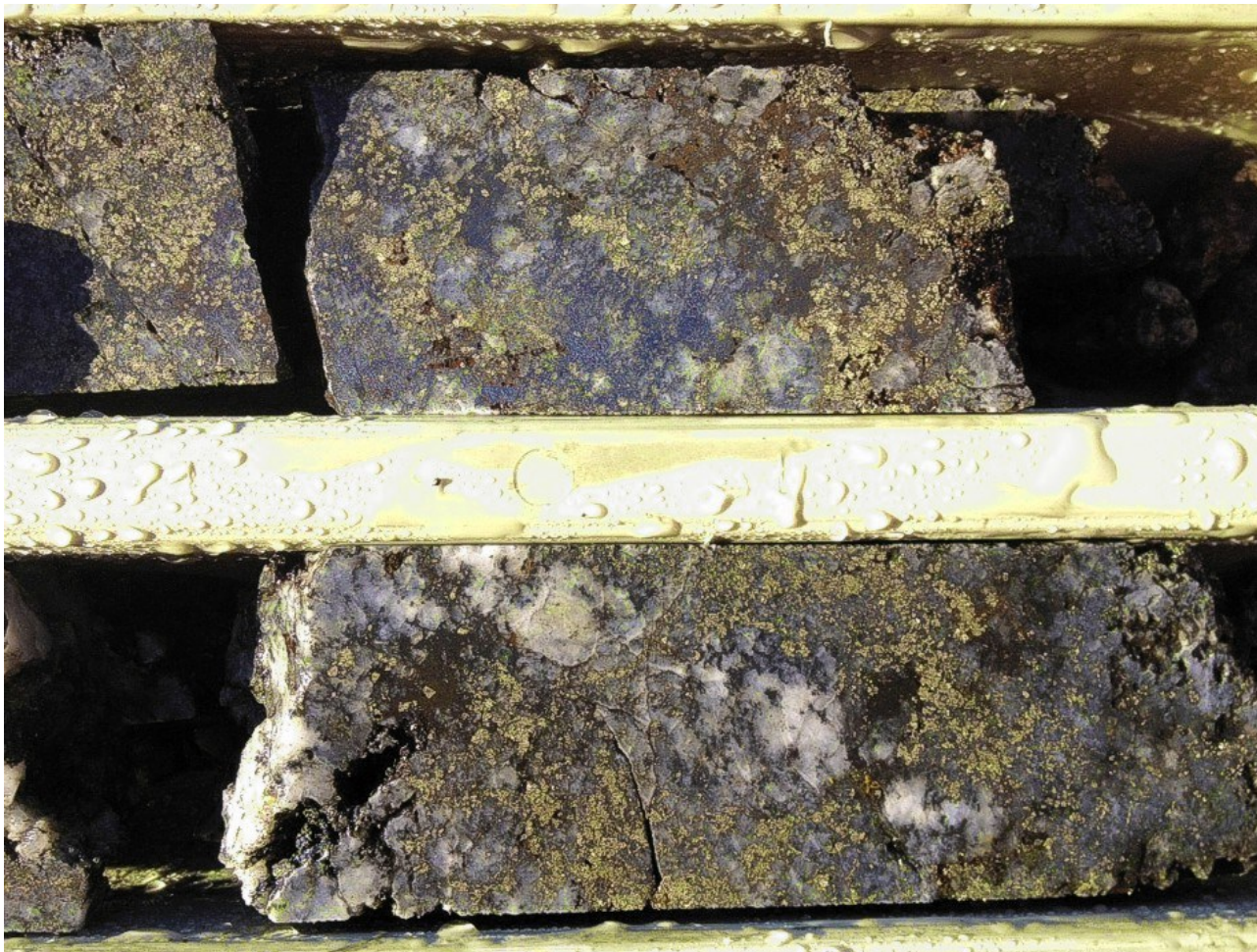


Figure 8: Example of high-grade drill core intersected in DODDH447 at Fairfield (approximately 85.4m - 86.4m). Semi-massive chalcocite (chalcocite contains 79.9% copper metal), and chalcopyrite (chalcopyrite contains 34.6% copper metal), and minor bornite (bornite contains 63.3% copper metal) and pyrite (cobalt is associated with pyrite at Fairfield).

Inventory, which is the motivation behind current drilling.

A resource estimate has not yet been prepared for Fairfield, which is planned to provide supplementary ore to the high-grade inventory planned to be processed at the Rocklands Group Copper Project.

Mineralisation

The Fairfield mineralised zone is an approximately east-west striking, steeply north-dipping, east-plunging body of semi-oxidised quartz breccia, host to massive and semi-massive chalcocite-chalcopyrite-pyrite-bornite mineralisation, of the Rocklands Cu-Co-Au type, although the strike of mineralisation differs considerably from other Rocklands orebodies.

Regionally, Fairfield is located on a north-east limb of a north-west trending syncline (Las Minerale, the flagship orebody at Rocklands, is also on a north-east limb of a north-west trending anticline). Both occur in the overhang jaspilite, which is considered the favoured lithology for the discovery of significant copper mineralization in the Rocklands area.

Vuggy voids in recovered drill core may have contained sooty chalcocite that has been washed away through diamond drilling.



Figure 9: Example of high-grade drill core intersected in DODDH446 at Fairfield (approximately 68-69m). Massive and semi-massive chalcocite and chalcopyrite (chalcocite contains 79.9% copper metal, chalcopyrite contains 34.6% copper metal).

History

Historic records reveal Fairfield produced 1118 tonnes of ore at an average grade of 6.50% Cu, from 1968-1972. Workings evident today include an open cut pit to a depth of approximately 15m with exposed copper oxide minerals (malachite, azurite) clearly evident on the pit walls. CuDeco has drilled several Diamond and Reverse Circulation (RC) drill holes beneath the old pit, based on surface mapping and interpretation of mineralisation observed from the pit walls, all of which have intersected high-grade mineralisation.

The Fairfield prospect is characterised by encouraging geophysical anomalies, such as SAM EQMMR (Conductivity) high and magnetic high anomalies. The SAM survey has proved extremely successful in application and exploration in other parts of the Rocklands Mining Lease, and has been instrumental in the extensional drilling of the Rocklands ore bodies.

Yours faithfully



Wayne McCrae
Chairman

Colour Ranges for Copper Equivalent (CuEq) values, used in the following Assay Results Tables;

CuEq	From	To
	0	<0.1
	0.1	<0.2
	0.2	<1
	1	<2
	2+	

Note: CuEq in %

Assay Results Legend

- “nn” Negatives values indicated result below lower detection limit (“nn”= lower detection limit)
- LNR Lab Not Receive (ie, sample not received at Assay Lab)
- I/S Insufficient Sample available to obtain result
- DIP sample Destroyed In Preparation
- X result below detection

Detailed assay results for DODH446

	Co	Cu	Au	Cu Equiv
UNITS	PPM	%	PPM	%
DODH446 061	54	0.00	-0.01	0.06
DODH446 062	135	0.00	-0.01	0.16
DODH446 063	88	0.00	-0.01	0.10
DODH446 064	90	0.00	-0.01	0.11
DODH446 065	190	0.00	-0.01	0.22
DODH446 066	600	0.00	0.01	0.70
DODH446 067	500	0.62	0.03	1.17
DODH446 068	2000	5.63	0.43	7.69
DODH446 069	2850	7.07	0.09	10.05
DODH446 070	2700	3.64	0.20	6.61
DODH446 071	2400	3.63	0.24	6.25
DODH446 072	2200	3.90	0.28	6.28
DODH446 073	950	5.71	1.50	6.53
DODH446 074	1150	5.46	0.36	6.54
DODH446 075	3050	5.15	0.27	8.46
DODH446 076	1350	5.11	0.21	6.44
DODH446 077	1100	4.55	0.31	5.61
DODH446 078	850	1.66	0.10	2.58
DODH446 079	750	1.78	0.13	2.57
DODH446 080	330	1.18	0.10	1.51
DODH446 081	850	3.19	0.53	4.03
DODH446 082	480	2.10	0.27	2.55
DODH446 083	195	1.07	0.08	1.25
DODH446 084	125	2.15	0.09	2.19
DODH446 085	220	0.74	0.09	0.96
DODH446 086	140	0.14	0.02	0.29
DODH446 087	140	0.32	0.04	0.46
DODH446 088	100	0.11	0.01	0.22
DODH446 089	74	0.08	0.01	0.16
DODH446 090	86	0.06	0.02	0.15
DODH446 091	49	0.02	0.01	0.07
DODH446 092	43	0.07	0.02	0.11
DODH446 093	34	0.04	0.01	0.08
DODH446 094	28	0.02	0.01	0.05
DODH446 095	125	0.09	0.02	0.23

Detailed assay results for DODH447

UNITS	Co PPM	Cu %	Au ppm	Cu Equiv %
DODH447 072	310	0.00	pending	0.36
DODH447 073	110	0.00	pending	0.13
DODH447 074	330	0.13	pending	0.51
DODH447 075	220	0.00	pending	0.26
DODH447 076	180	0.35	pending	0.54
DODH447 077	72	0.05	pending	0.13
DODH447 078	3050	4.35	pending	7.70
DODH447 079	460	1.51	pending	1.98
DODH447 080	1450	2.36	pending	3.94
DODH447 081	1350	7.94	pending	9.12
DODH447 082	2150	6.55	pending	8.74
DODH447 083	1900	6.19	pending	8.10
DODH447 084	470	10.80	pending	10.81
DODH447 085	1150	11.30	pending	12.08
DODH447 086	1700	5.16	pending	6.89
DODH447 087	1500	8.58	pending	9.90
DODH447 088	550	2.12	pending	2.66
DODH447 089	92	0.71	pending	0.78
DODH447 090	480	1.55	pending	2.03
DODH447 091	600	3.32	pending	3.86
DODH447 092	400	1.78	pending	2.16
DODH447 093	185	0.32	pending	0.52
DODH447 094	195	0.12	pending	0.34
DODH447 095	260	0.18	pending	0.48
DODH447 096	125	0.11	pending	0.25
DODH447 097	100	0.02	pending	0.13
DODH447 098	120	0.02	pending	0.16
DODH447 099	125	0.34	pending	0.46
DODH447 100	52	0.99	pending	1.00
DODH447 101	80	1.44	pending	1.46
DODH447 102	52	0.31	pending	0.35
DODH447 103	92	0.96	pending	1.02
DODH447 104	I/S	I/S	I/S	I/S
DODH447 105	145	0.17	pending	0.33
DODH447 106	105	0.10	pending	0.21
DODH447 107	60	0.02	pending	0.08
DODH447 108	33	0.01	pending	0.05
DODH447 109	52	0.06	pending	0.12
DODH447 110	105	0.01	pending	0.13

Competent Person Statement

The information in this report that relates to Exploration Results is based on information compiled by Mr Andrew Day. Mr Day is employed by GeoDay Pty Ltd, an entity engaged, by CuDeco Ltd to provide independent consulting services. Mr Day has a BAppSc (Hons) in geology and he is a Member of the Australasian Institute of Mining and Metallurgy (Member #303598). Mr Day has sufficient experience which is relevant to the style of mineralisation and type of deposits under consideration and to the activity which he is undertaking to qualify as a Competent Person as defined in the 2004 Edition of the "Australasian Code for Reporting of Exploration Results, Mineral Resources and Ores Reserves". Mr Day consents to the inclusion in this report of the information in the form and context in which it appears.

The information in this report insofar as it relates to Metallurgical Test Results and Recoveries, is based on information compiled by Mr Peter Hutchison, MRACI Ch Chem, MAusIMM, a full-time executive director of CuDeco Ltd. Mr Hutchison has sufficient experience in hydrometallurgical and metallurgical techniques which are relevant to the results under consideration and to the activity which he is undertaking to qualify as a Competent Person for the purposes of this report. Mr Hutchison consents to the inclusion in this report of the information, in the form and context in which it appears.

Rocklands style mineralisation

Dominated by dilational brecciated shear zones, throughout varying rock types, hosting coarse splashy to massive primary mineralisation, high-grade supergene chalcocite enrichment and bonanza-grade coarse native copper. Structures hosting mineralisation are sub-parallel, east-south-east striking, and dip steeply within metamorphosed volcano-sedimentary rocks of the eastern fold belt of the Mt Isa Inlier. The observed mineralisation, and alteration, exhibit affinities with Iron Oxide-Copper-Gold (IOCG) classification. Polymetallic copper-cobalt-gold mineralisation, and significant magnetite, persists from the surface, through the oxidation profile, and remains open at depth.

Notes on Assay Results

All analyses are carried out at internationally recognised, independent, assay laboratories. Quality Assurance (QA) for the analyses is provided by continual analysis of known standards, blanks and duplicate samples as well as the internal QA procedures of the respective independent laboratories. Reported intersections are down-hole widths.

Au = Gold
Cu = Copper
Co = Cobalt
CuEq = Copper Equivalent

Copper Equivalent (CuEq) Calculation

The formula for calculation of copper equivalent is based on the following metal prices and metallurgical recoveries:

Copper: \$2.00 US\$/lb; Recovery: 95.00%

Cobalt: \$26.00 US\$/lb; Recovery: 90.00%

Gold: \$900.00 US\$/troy ounce Recovery: 75.00%

$$\text{CuEq} = \text{Cu}(\%) \times 0.95 + \text{Co}(\text{ppm}) \times 0.00117 + \text{Au}(\text{ppm}) \times 0.49219$$

In order to be consistent with previous reporting, the drill intersections reported above have been calculated on the basis of copper cut-off grade of 0.2% Cu, or a copper equivalent grade of 0.35%, with an allowance of up to 4m of internal waste.

The recoveries used in the calculations are the average achieved to date in the metallurgical test-work on primary sulphide, supergene, oxide and native copper zones.

The Company's opinion is that all of the elements included in the copper equivalent calculation have a reasonable potential to be recovered.

Disclaimer and Forward-looking Statements

This report contains forward-looking statements that are subject to risk factors associated with resources businesses. It is believed that the expectations reflected in these statements are reasonable, but they may be affected by a variety of variables and changes in underlying assumptions which could cause actual results or trends to differ materially, including, but not limited to: price fluctuations, actual demand, currency fluctuations, drilling and production results, reserve estimates, loss of market, industry competition, environmental risks, physical risks, legislative, fiscal and regulatory developments, economic and financial market conditions in various countries and regions, political risks, project delays or advancements, approvals and cost estimates.

Hole Location Table

Hole ID	Easting	Northing	RL (m)	Azi (°)	Dip (°)	Hole Depth (m)
BP002	433549.1	7716193.8	221.7	345	-55	72
DORC330	433547.6	7716265.7	220.9	180	-55	154
LMRC458	433590.7	7716276.9	219.8	210	-55	124
DODH242	433489.6	7716157.8	220.7	030	-32	181.6
DODH245	433489.1	7716156.3	219.4	030	-40	200.2
DODH320	433493.5	7716187.8	219.4	030	-45	125.5
DODH443	433495	7716237	217	090	-50	179
DODH445	433495	7716237	217	090	-45	161
DODH446	433495	7716237	217	095	-45	119
DODH447	433495	7716237	217	092	-55	still drilling

Datum: AGD66 Project: UTM54 surveyed with Differential GPS (1 decimal place, 10cm accuracy) and/or handheld GPS (no decimal places, 4m accuracy).

Hole Location Plan

