



9 November 2012

The Manager
ASX Market Announcements
Australian Stock Exchange Limited
PO Box H224 Australia Square
SYDNEY NSW 2000

Dear Sir/Madam,

CORPORATE PRESENTATION

East Energy Resources Limited (ASX: EER) is pleased to provide the Company's most recent corporate & investor presentation, which will be delivered to the Galilee Basin conference next week.

A copy of the presentation is attached.

Yours faithfully

A handwritten signature in blue ink, appearing to read 'Ranko Matic', is written over a light blue horizontal line.

Ranko Matic
Non Executive Director
Company Secretary



Unlocking a New Coal Frontier

The Blackall Coal Project

September 2012

EAST ENERGY RESOURCES LTD (ASX:EER)

www.eastenergy.com.au

Disclaimer

The information and statements contained in the document have been provided to you only by East Energy Resources Limited (EER) and are subject to change without notice. Statements contained in this material, particularly those regarding the possible or assumed future performance, costs, dividends, returns, production levels or rates, prices, reserves, potential growth of EER, industry growth or other trend projections and estimated company earnings are or may be forward looking statements. Such statements relate to the future events and expectations and as such involve known and unknown risks and uncertainties. Nothing contained in this document constitutes investment, legal, tax or other advice. Before making an investment decision, you should consider, with or without the assistance of professional securities advisor, whether an investment in EER is appropriate in the light of your particular investment leads, objectives and financial circumstances.

Geological Attribution

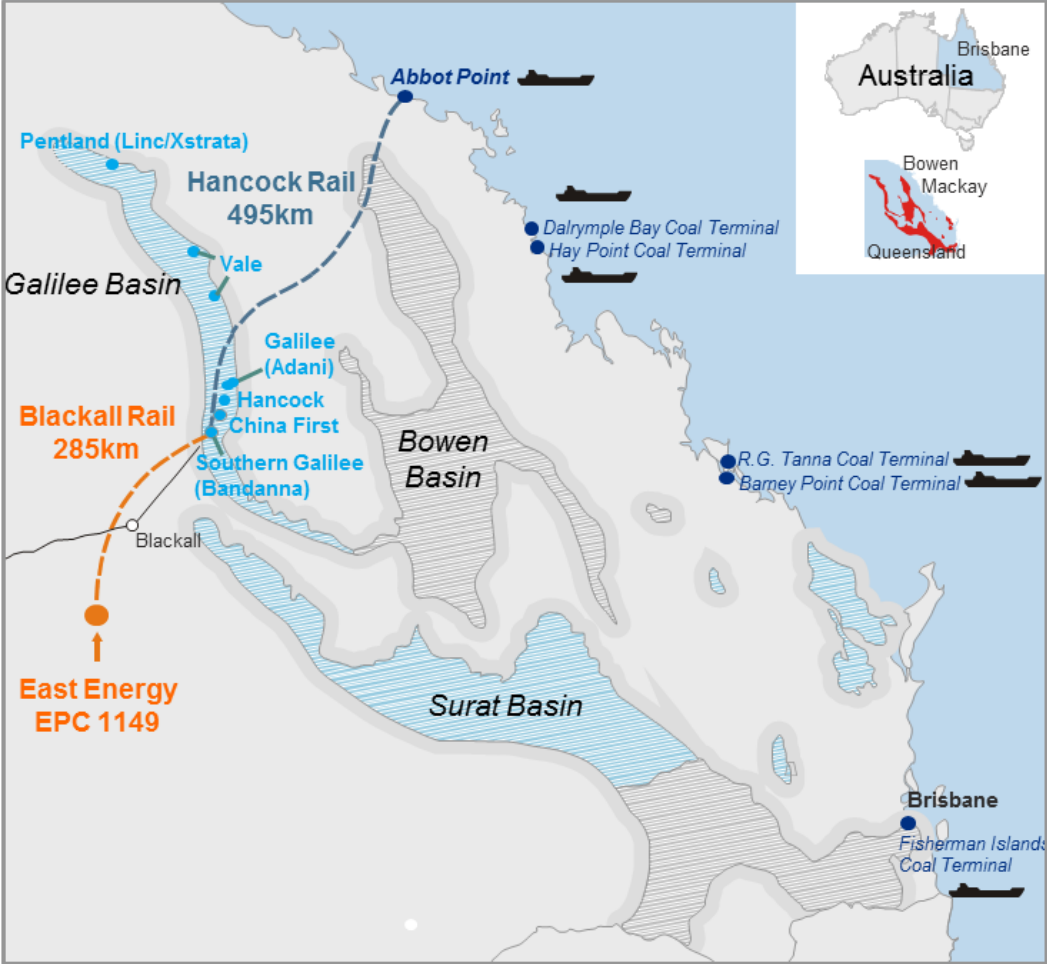
The information in this report that relates to Coal Resources is based on information reviewed by Dr Gerard McCaughan who is a member of the Australian Institute of Mining and Metallurgy and a full time employee of SRK. Dr McCaughan has sufficient experience to qualify as a Competent Person as defined in the 2004 edition of the JORC Code. Dr McCaughan consents to the inclusion in the presentation of the matters based on this information in the form and context in which it appears.

Blackall Coal Project

- **EPC1149** granted by Queensland's Department of Mines and Energy on 22 April 2008.
- Located in Central Western Queensland, 25km south of the township of Blackall in the eastern part of the **Eromanga Basin**.
- The total surface area of EPC1149 is approximately **900 square kilometres**.
- **Drilling commenced in June 2008 – more than 350 holes completed to date**
- The most advanced of the coal projects in the Eromanga region.

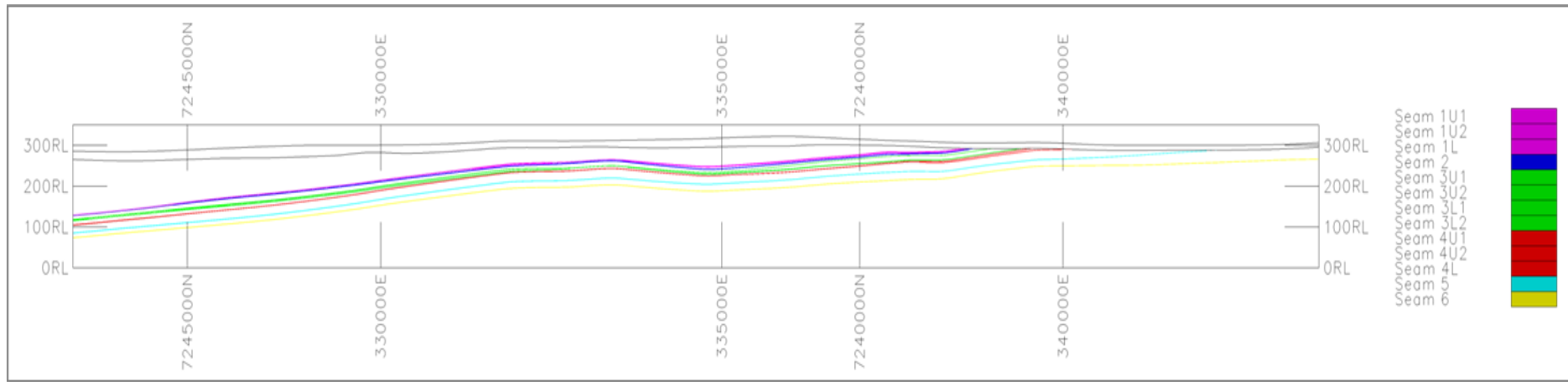


Project Location



Blackall Coal Geology

- **The Blackall Project lies within the Eromanga Basin**, an intracratonic basin which is early Jurassic to late Cretaceous in age.
- Coal is developed in the **Late Cretaceous Winton Formation**.
- **Six main coal intervals** (designated seams 1 to 6) are identified as being present in the broader Project area.



Resource Update

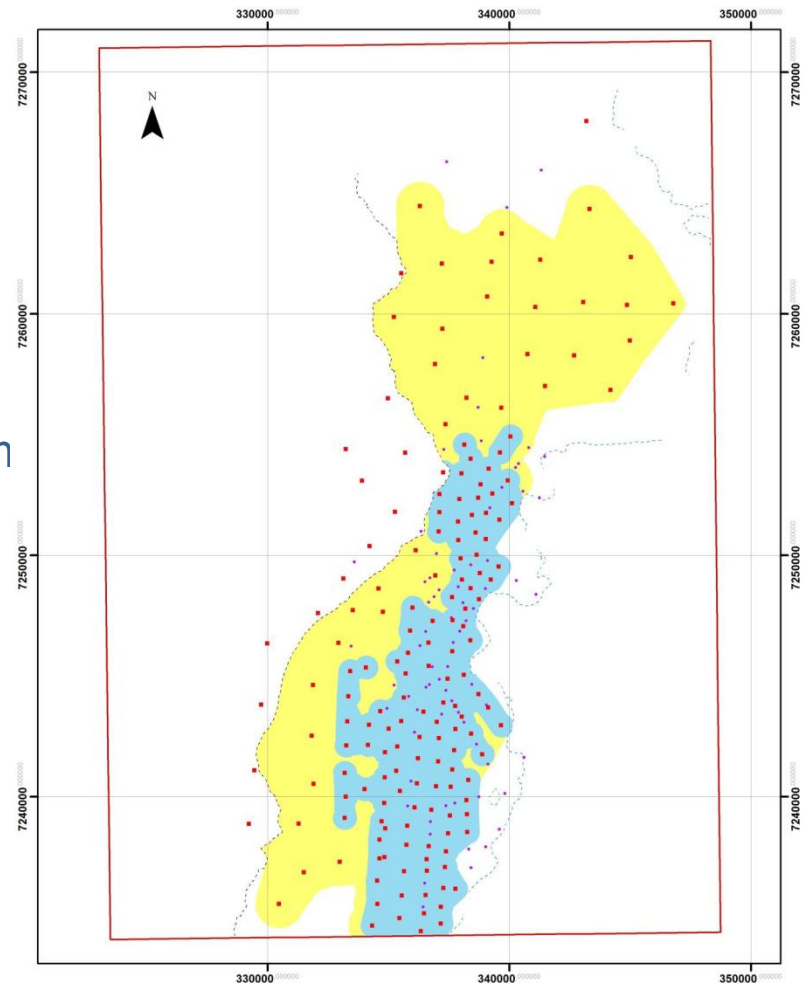
- Updated **JORC Resource totalling 1.74Bt** confirmed after completion of the 2011-2012 drilling program
- Target of 2Bt should be achieved with further limited drilling planned along the projected sub-crop and in the northern extent of the deposit.
- All resource is within EPC 1149 with a cut-off depth of 150m.
- The geological model indicates seam continuity to the north and south of EPC 1149.
- Sufficient resource to support a large scale open-cut thermal coal mine with long mine life.



Resource Update

SRK 2012 - Total Resource of 1.74Bt

- **Points of Observation** for this Resource estimate are HQ cored boreholes with down hole geophysical logging and >95% core recovery
- **JORC Indicated Resource** of 627.5Mt based on points of observation up to 1km apart
- **JORC Inferred Resource** of 1,113.0Mt based on points of observation up to 3km apart.



Legend

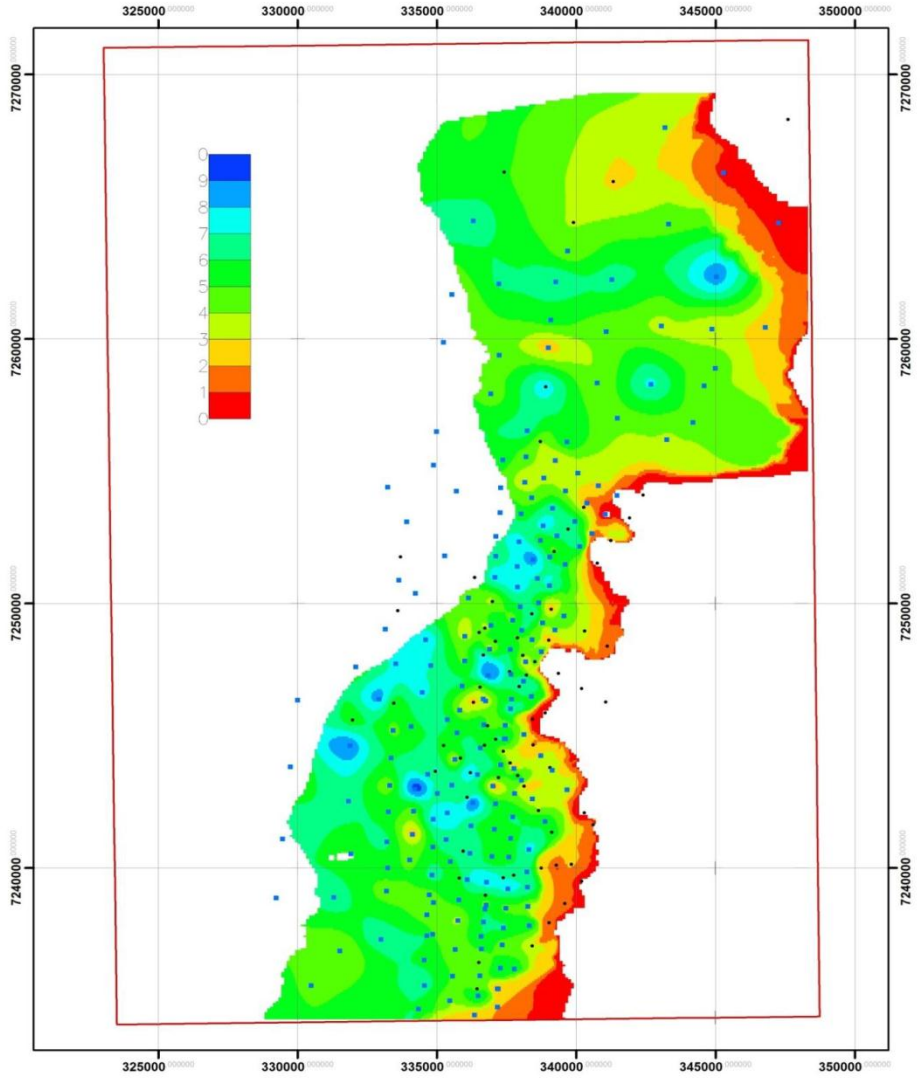
- Point of Observation for seam quality and thickness
- Point of Observation for seam thickness
- Modelled seam subcrop
- - - - 150 m depth limit
- Indicated Resource
- Inferred Resource

Seam 3L2 Resource

GDA94 zone 55

0 1,250,500 5,000 7,500 10,000 Meters

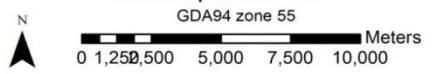
srk consulting



Legend

- EPC 1149 Lease
- Existing geophysically logged chip hole
- Existing slim core hole

Cumulative seam thickness to 4L seam
Max depth 150 m



Coal Quality

- Ideal for Thermal Power Projects in China and India.
- Indonesian sub-bituminous coal of similar quality (CV of 5,000k/cal) used in power stations in Japan, Korea, Taiwan, Thailand, India, China and Europe.
- Limited expansion capabilities for Newcastle and South African exports.
- **Eromanga and Galilee Basin to take up new demand.**

Raw Coal

- Ash (ad) 22%
- Moisture (ad) 18 % to 22%
- Specific Energy 15 to 17 MJ/kg
- Sulphur 0.54%

F1.60 Product Coal

- Yield 81%
- Ash (ad) 13%
- Moisture (ad) 17.9%
- Specific Energy 19 to 21 MJ/kg



Recent progress

- Drilling for JORC update completed – new resource statement completed on 31 August by SRK.
- Study has commenced into using the existing rail easement from Blackall to Jericho.
- Application pending for Mineral Development Licence (MDL) over the Blackall Coal Resource.
- Plan to negotiate with Preferred Respondents on Port of Abbot Point expansion for third party access. Aim to secure up to 20Mtpa capacity.
- Ongoing work by GVK in the Galilee advances infrastructure prospects and highlights potential for region.



East Energy is well positioned to leverage the infrastructure options being considered for the Galilee Basin and the projected expansion of Queensland's coal ports.

Noble Group and EER



- Noble Group holds a direct interest of **30.47%** in EER.
- One Non-Executive Director.
- Provides experience and first-hand knowledge across all aspects of coal industry.
- Particular expertise in coal marketing, pricing, international networks and long term trends.

About Noble Group

- One of the world's largest commodity traders with a market capitalisation of S\$7.6Bn (April 2012)
- Based in Hong Kong and listed on the Singapore Stock Exchange.
- Global network spanning 38 countries across five continents.
- Specialises in the origination and delivery of strategic raw materials.
- Coal focus includes sophisticated supply chain management, strong sourcing and distribution capabilities.
- Active in Australia in coal and iron ore.



Opportunities Ahead

- Located in a **major new thermal coal basin** with significant resource growth expected over the next 10 years.
- Thermal **coal demand underpinned by global growth** in new coal fuelled power generation.
- Very large deposit, targeting bulk tonnage of **up to 20Mtpa over 30+ year mine life.**
- **Well positioned** to gain access to **new and expanded port and rail infrastructure;** sea freight advantage to meet **burgeoning demand from Asian and sub-continent consumers.**
- **Experienced management team** with strong support from Noble Group.

Highlights

#1

First mover advantage in a significant new growth area for the Australian coal industry – the Eromanga Basin, located next to the emerging Galilee Basin

#2

Close proximity to other projects being developed, with potential infrastructure access via the Galilee

#3

**Current JORC Resource for the Blackall Project of 1.74Bt
627.5 Mt Indicated and 1,113Mt Inferred – as at 31 Aug 2012**

#4

Exploration target of 2.0 billion tonnes, suitable for open cut mining

#5

Supportive major shareholder in Noble Group – 30.5%

#6

Application for Mineral Development Licence lodged



Unlocking a New Coal Frontier

For more information:

Mark Basso

Managing Director

Tel: +61 8 9225 5833

E: info@eastenergy.com.au

Level 7, 16 St Georges Terrace
Perth, WA 6000

EAST ENERGY RESOURCES LTD (ASX:EER)

www.eastenergy.com.au