

Kentor Gold

Mining the Territory

The History and Future of the Jervois Project

19 Sep 2012



Corporate Structure

K KENTOR GOLD

80%



100%



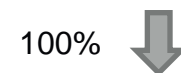
Andash Mining Company (Kyrgyz Republic)

Jinka Minerals (Australia)



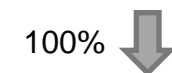
100%

Andash
Gold Copper



100%

Jervois
Copper Silver
Gold Lead
Zinc

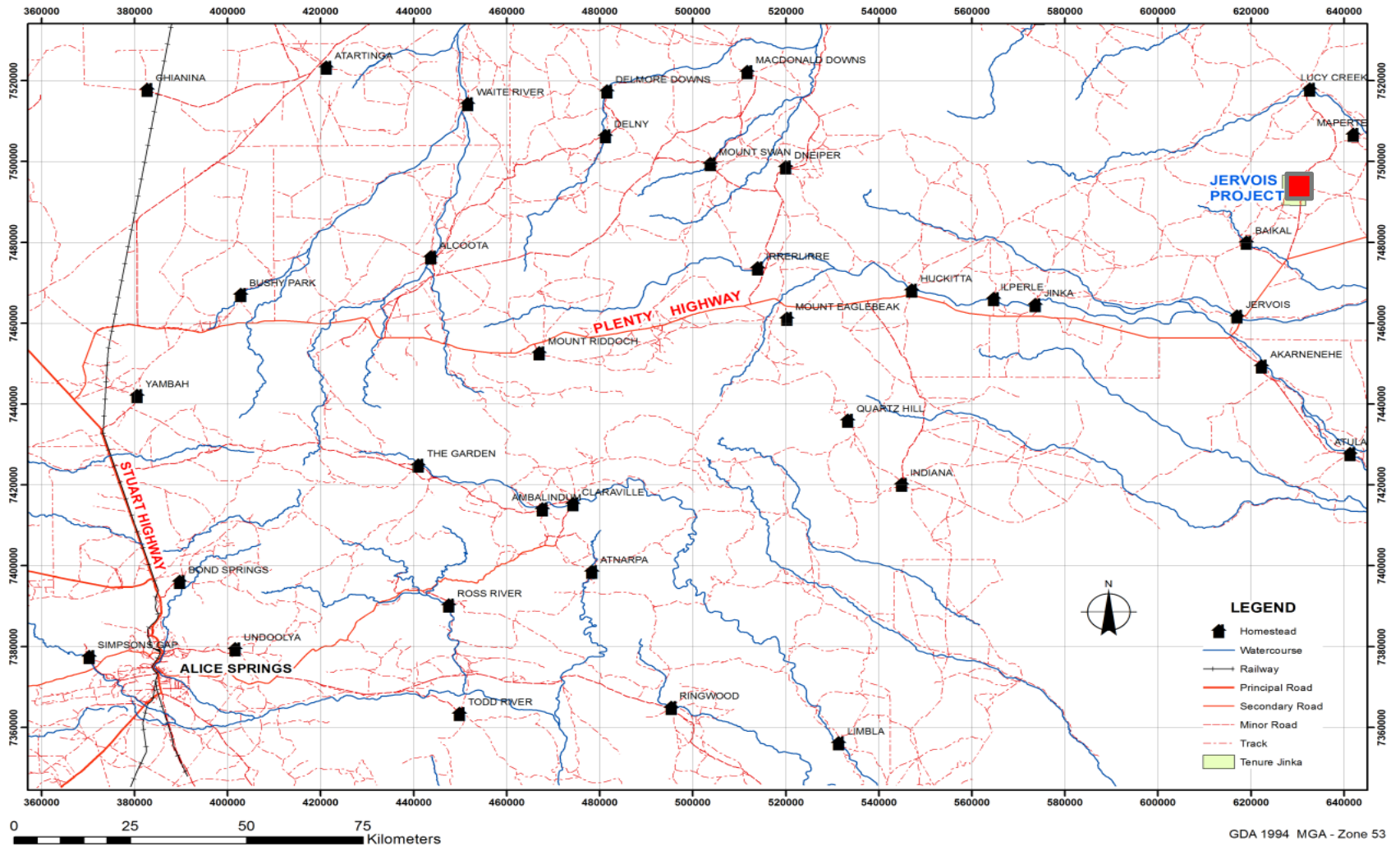


100%

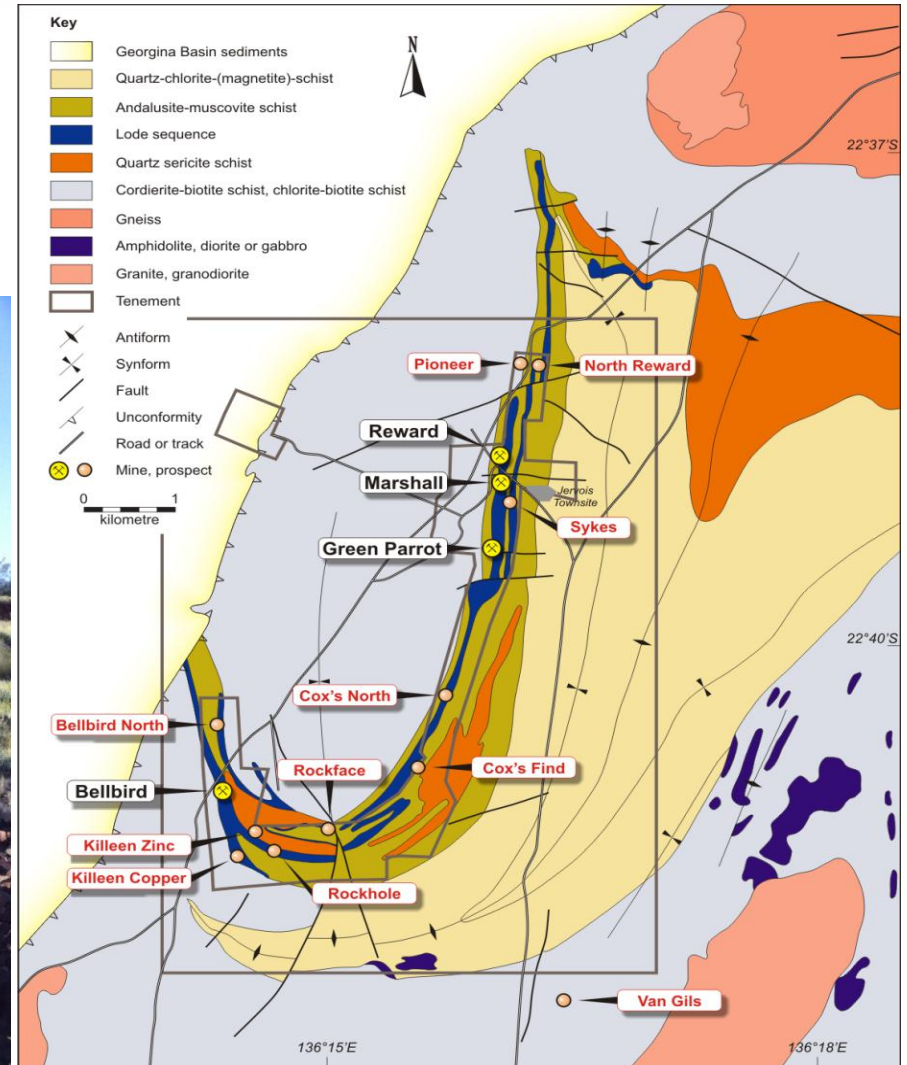
Murchison
Gold



Jervois Location Plan



Jervois Copper Project





DANGER
**OPEN
WORKINGS**



1930's





**Carting ore
from Jervois
to Mt Isa
circa 1960**

Photos from "A son of the Red Centre" – K.G. Johannsen





1950's





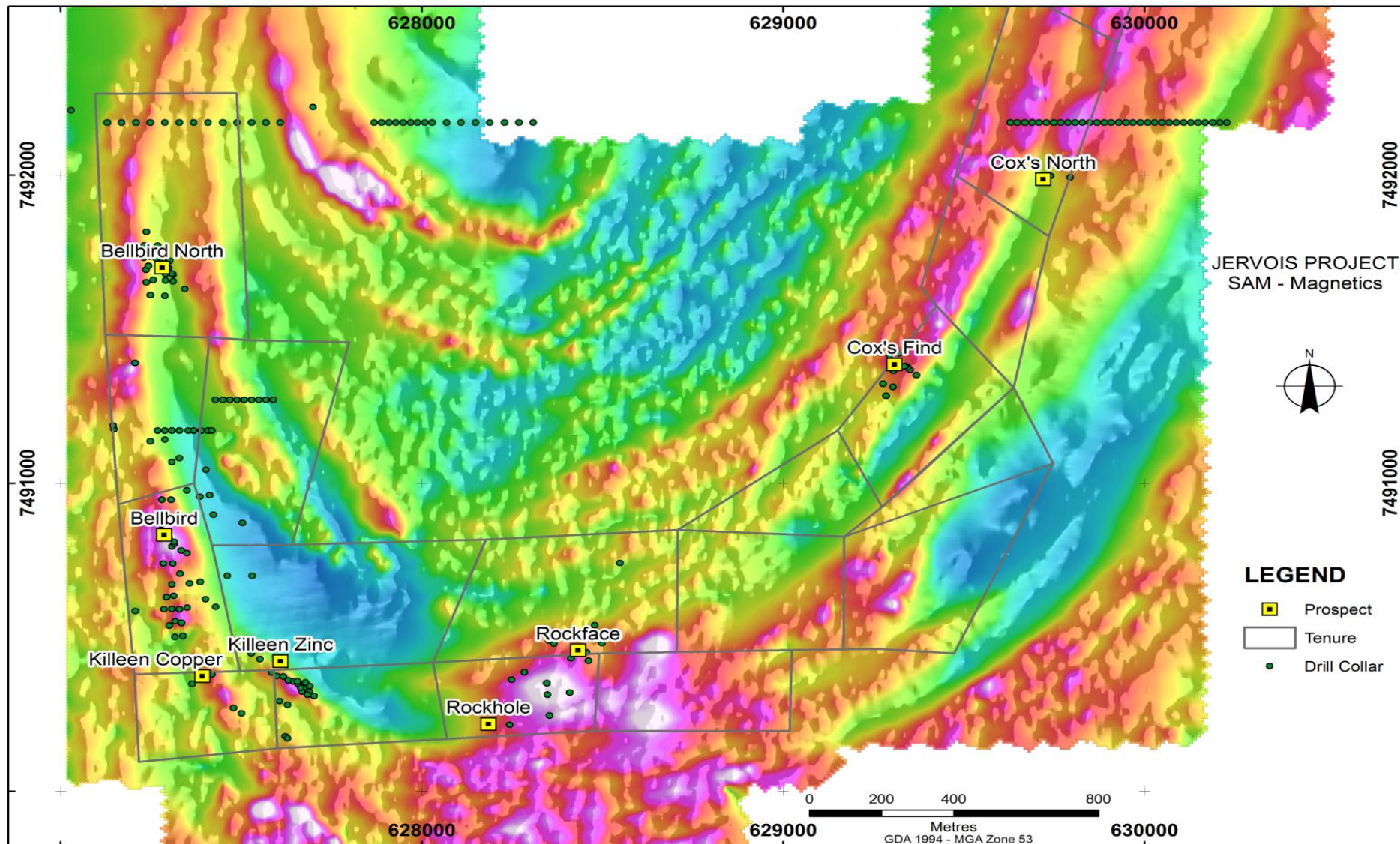
1960's



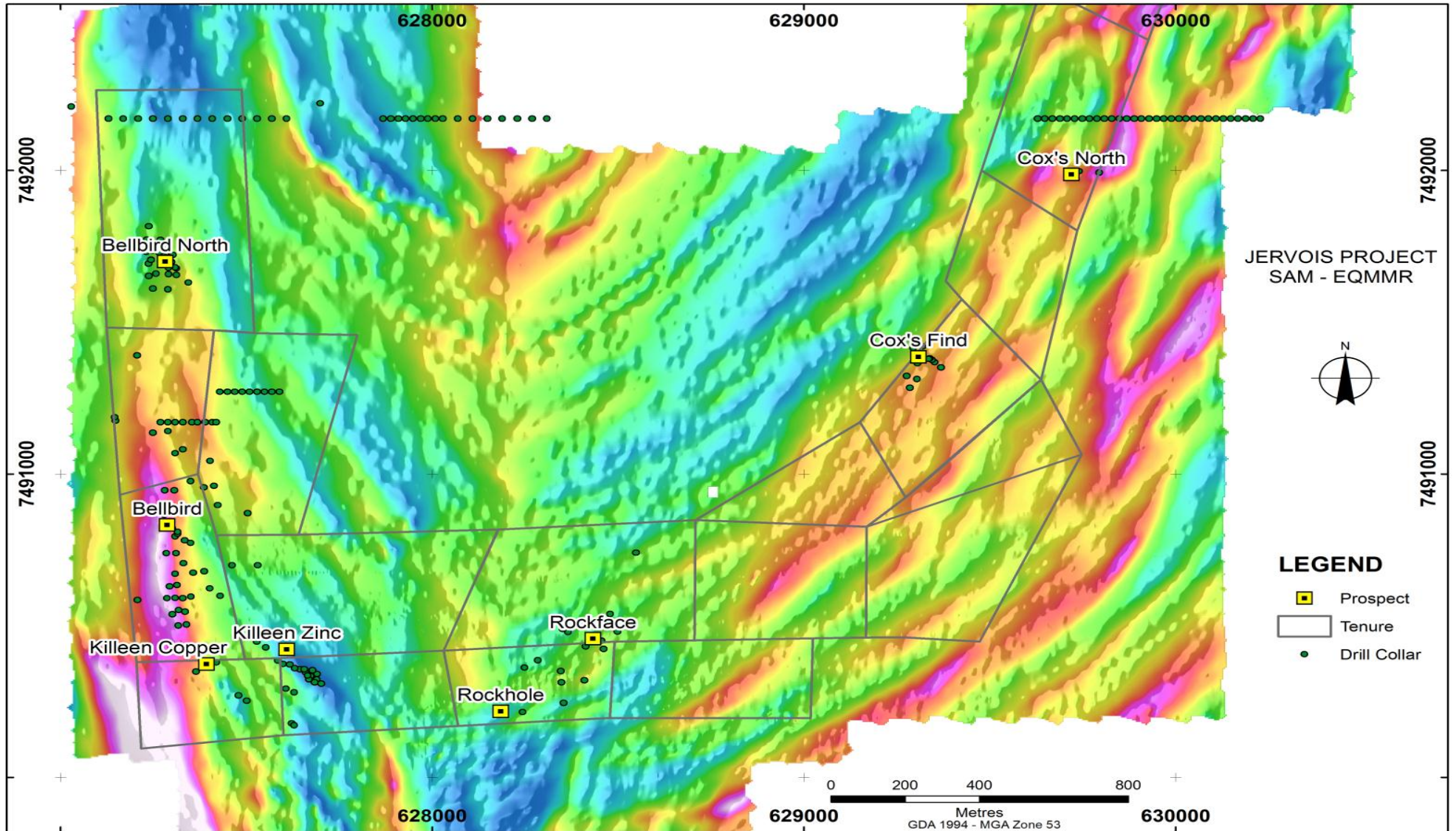
1980's



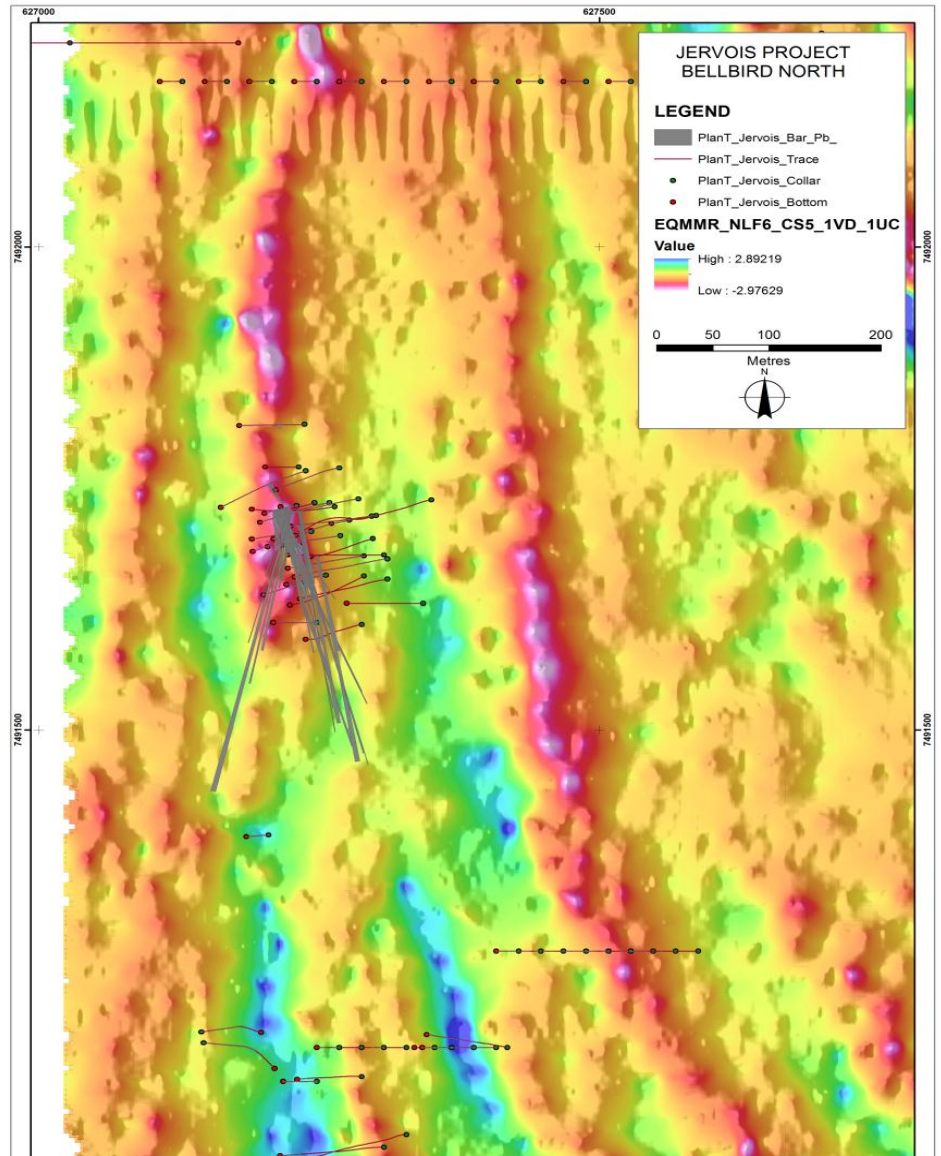
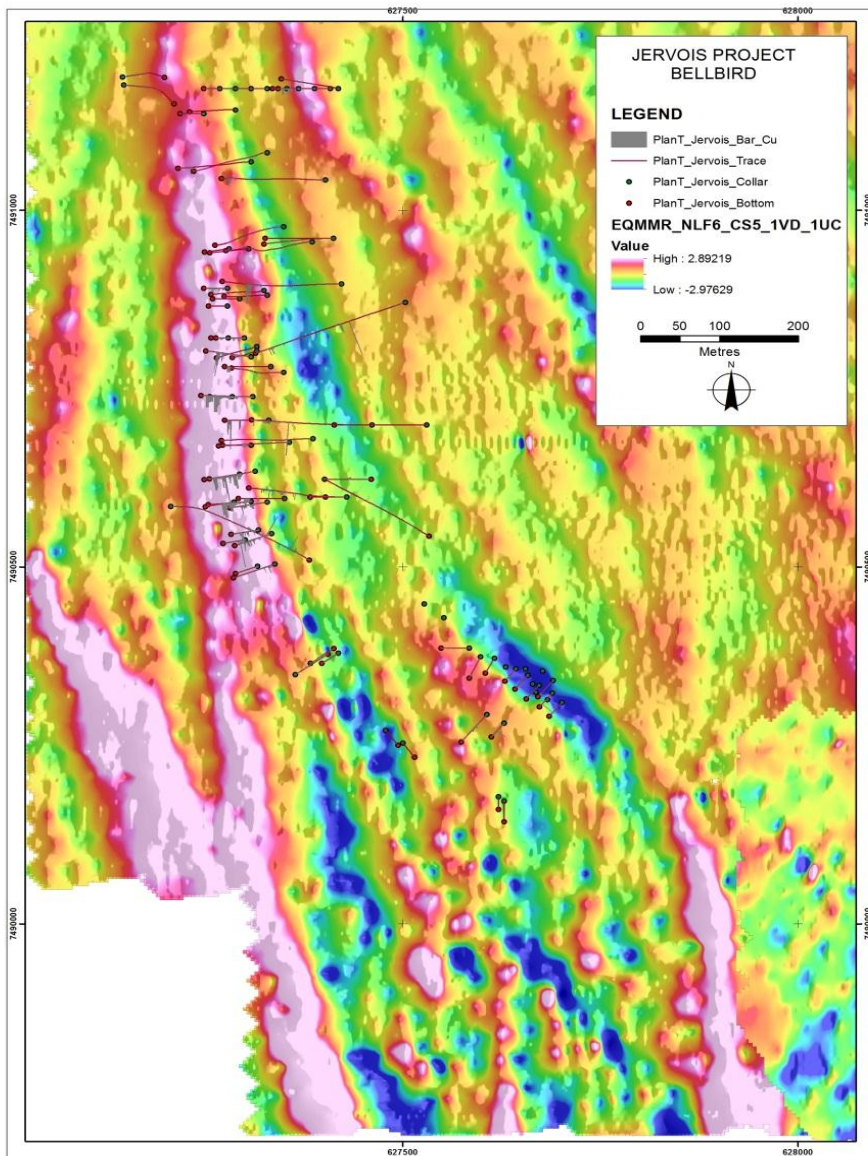
Magnetics



SAM Conductivity

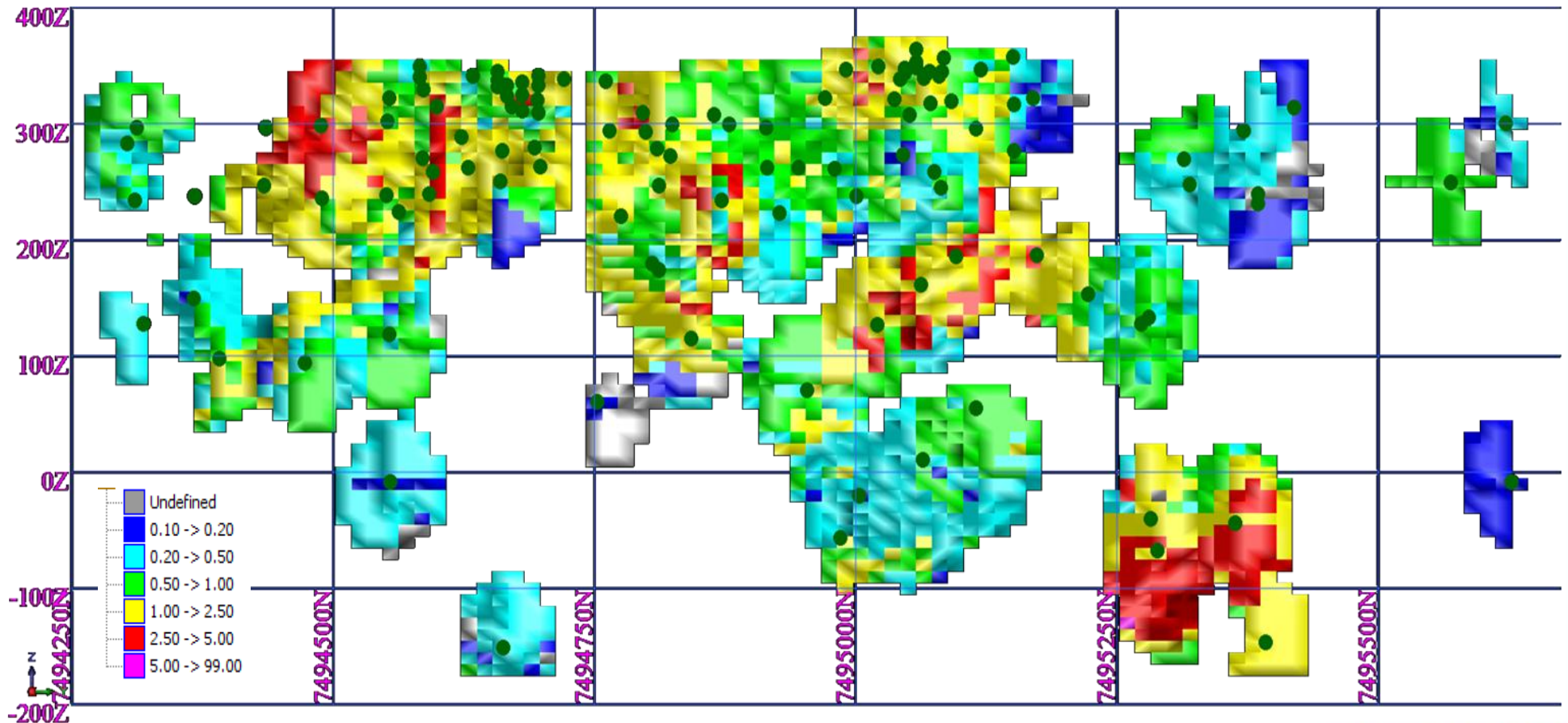


Good correlation between known mineralisation and SAM survey



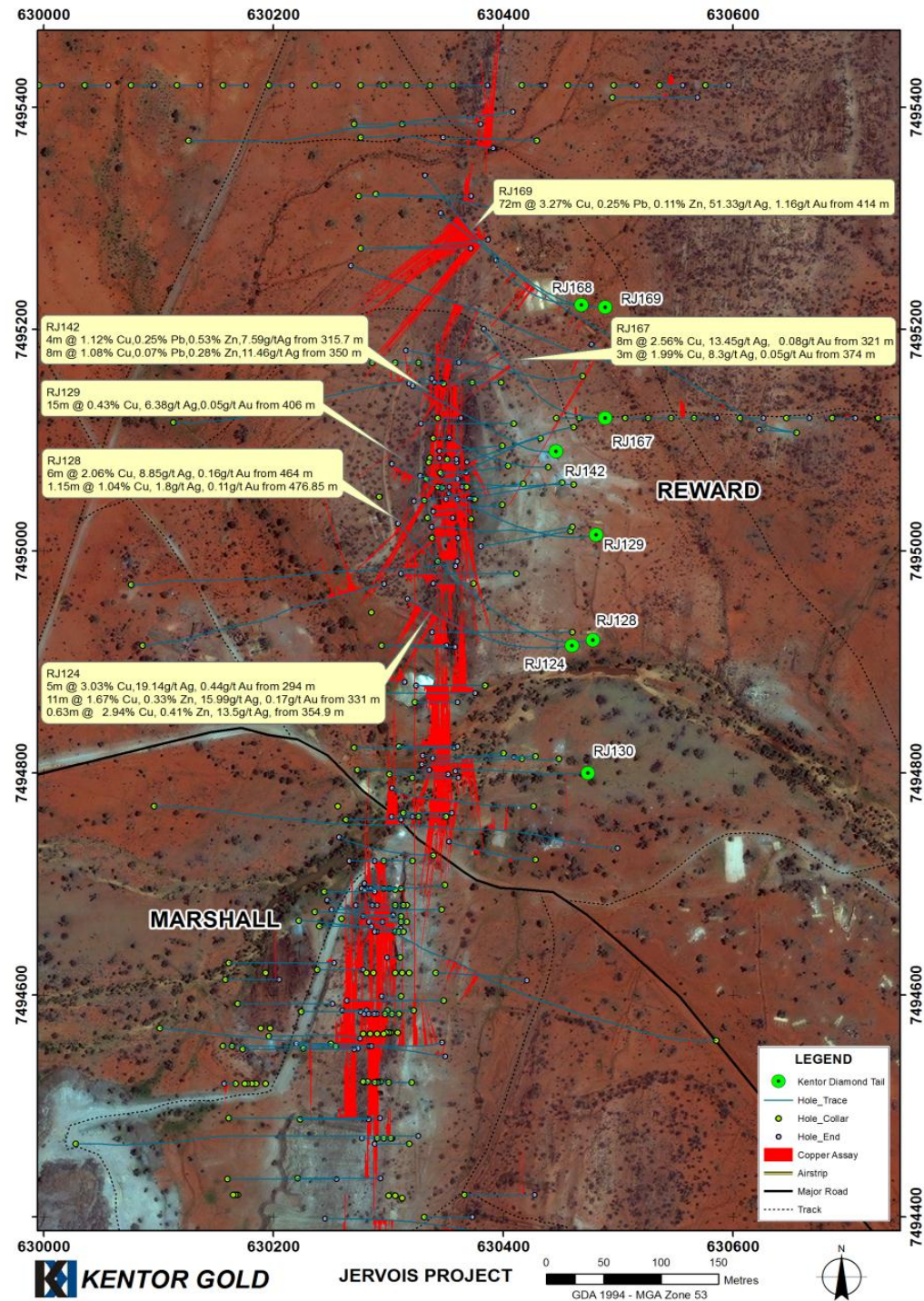
Reward Ore Body Long Section

- Inferred Copper Resource of 11.9 Mt @ 1.3% Cu and 25.2 g/t Ag
- 150,500t of contained copper and 9.7 m oz contained silver



2011 Exploration Results

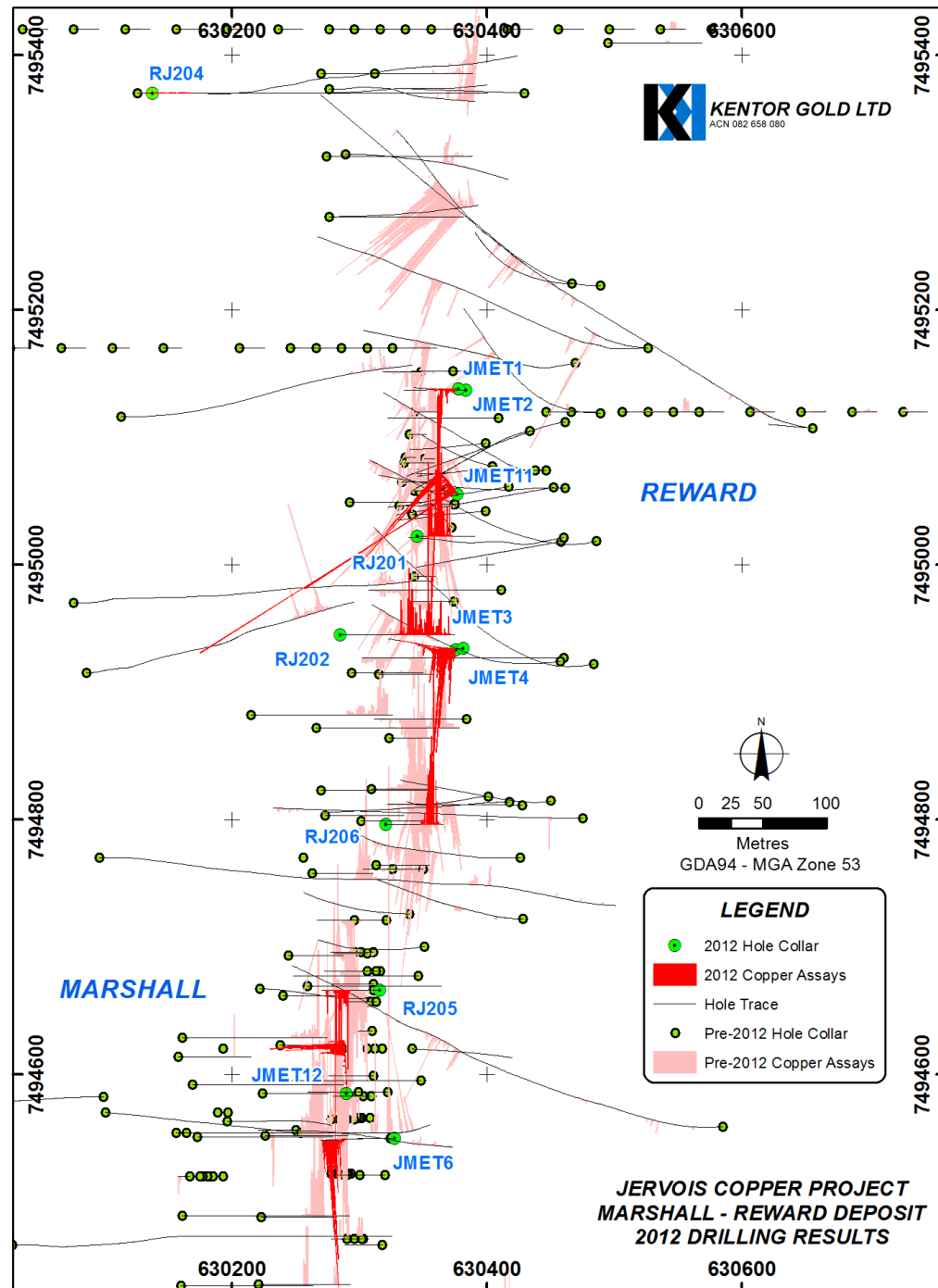
Best Hole
72m @ 3.27% Cu, 51.22 g/t Ag and
1.16 g/t Au



2012 Reward Results

2012 Exploration Results

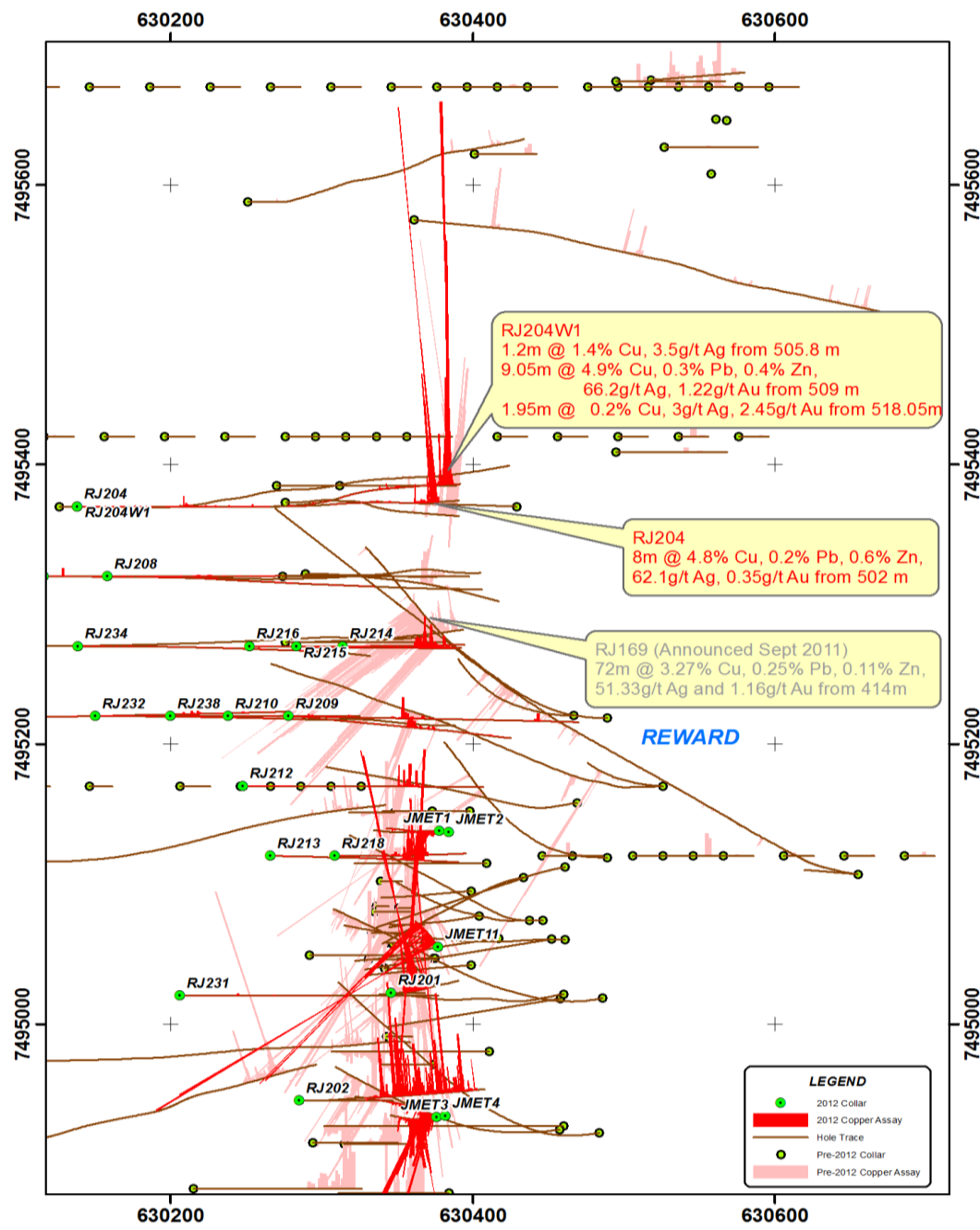
- 60m @ 1.3 % Cu, 113.3 g/t Ag JMET 11
- 33.8m @ 1.79% Cu, 28.5 g/t Ag RJ201
- 53.5m @ 1.08% Cu, 24.9 g/t Ag RJ202
- 16.3m @ 1.87% Cu, 55.3 g/t Ag JMET3
- 10.3m @ 2.1% Cu, 13.3 g/t Ag JMET4
- 12m @ 3.72% Cu, 40.7 g/t Ag RJ206
- 4.2m @ 6.6% Cu, 30 g/t Ag JMET2
- 21.4m @ 3% Cu, 40.1 g/t Ag JMET6
- 7m @ 2.3% Cu, 23.4 g/t Ag JMET8
- 25m @ 1.5% Cu, 28.2 g/t Ag JMET12



Reward North

2012 Exploration Results

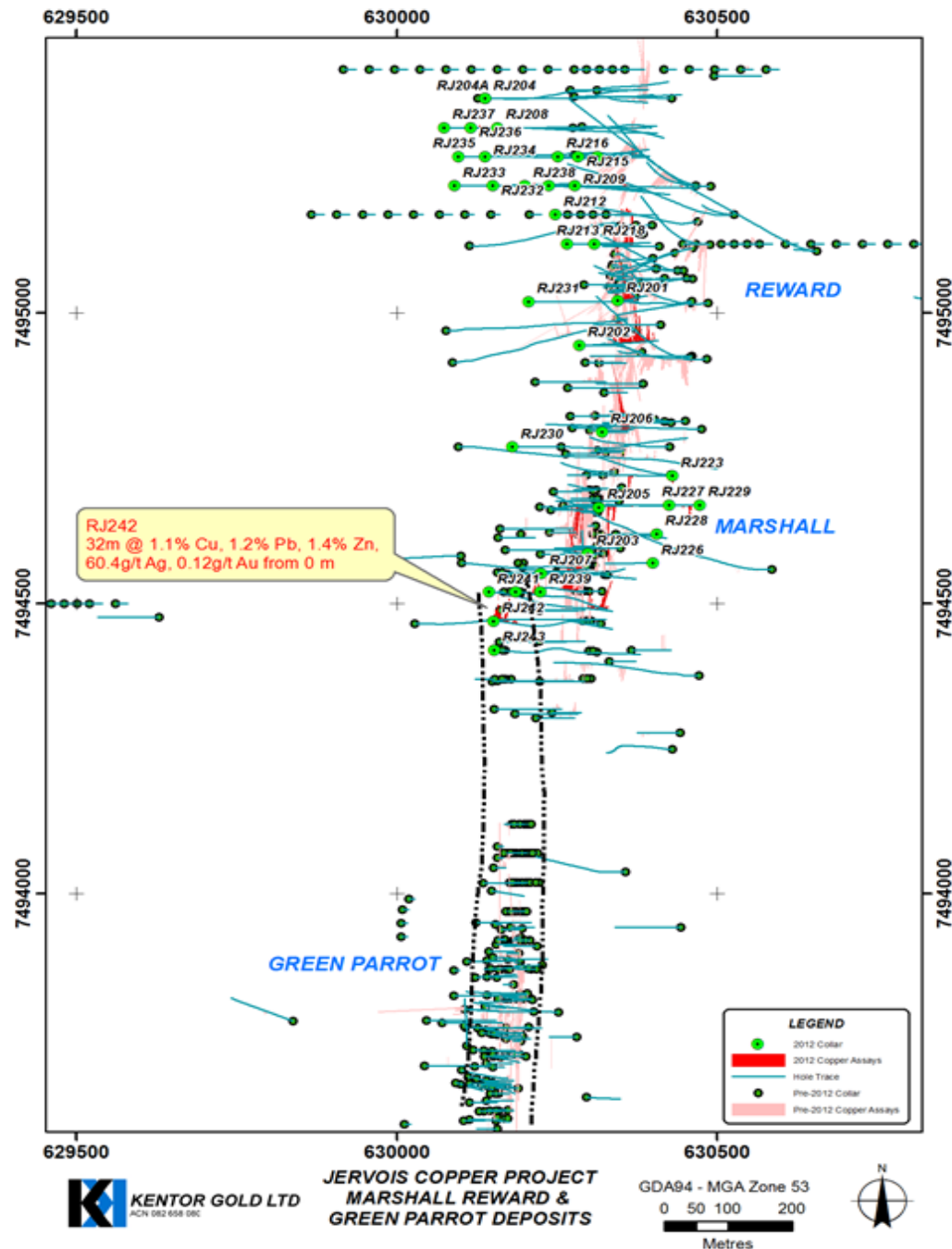
8m @ 4.8% Cu, 62.1 g/t Ag, 0.35 g/t Au
 9m @ 4.9% Cu, 66.2 g/t Ag, 1.22 g/t Au



Marshall West

32m @ 1.1% Cu, 1.2% Pb, 1.4% Zn,
60.4 g/t Ag, 0.12g/t Au from surface

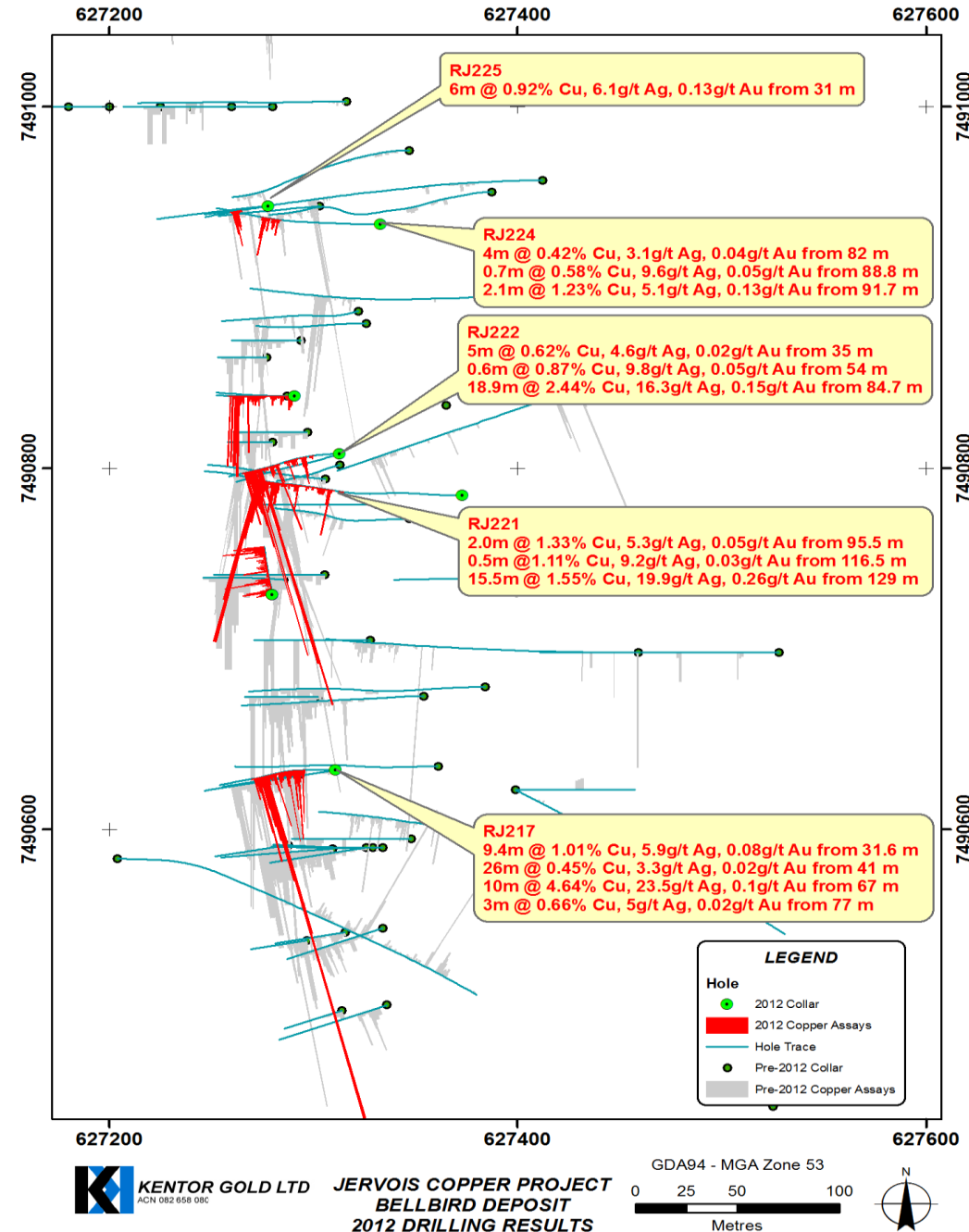
- Potential extension of Green Parrot



Bellbird Results

2012 Exploration Results

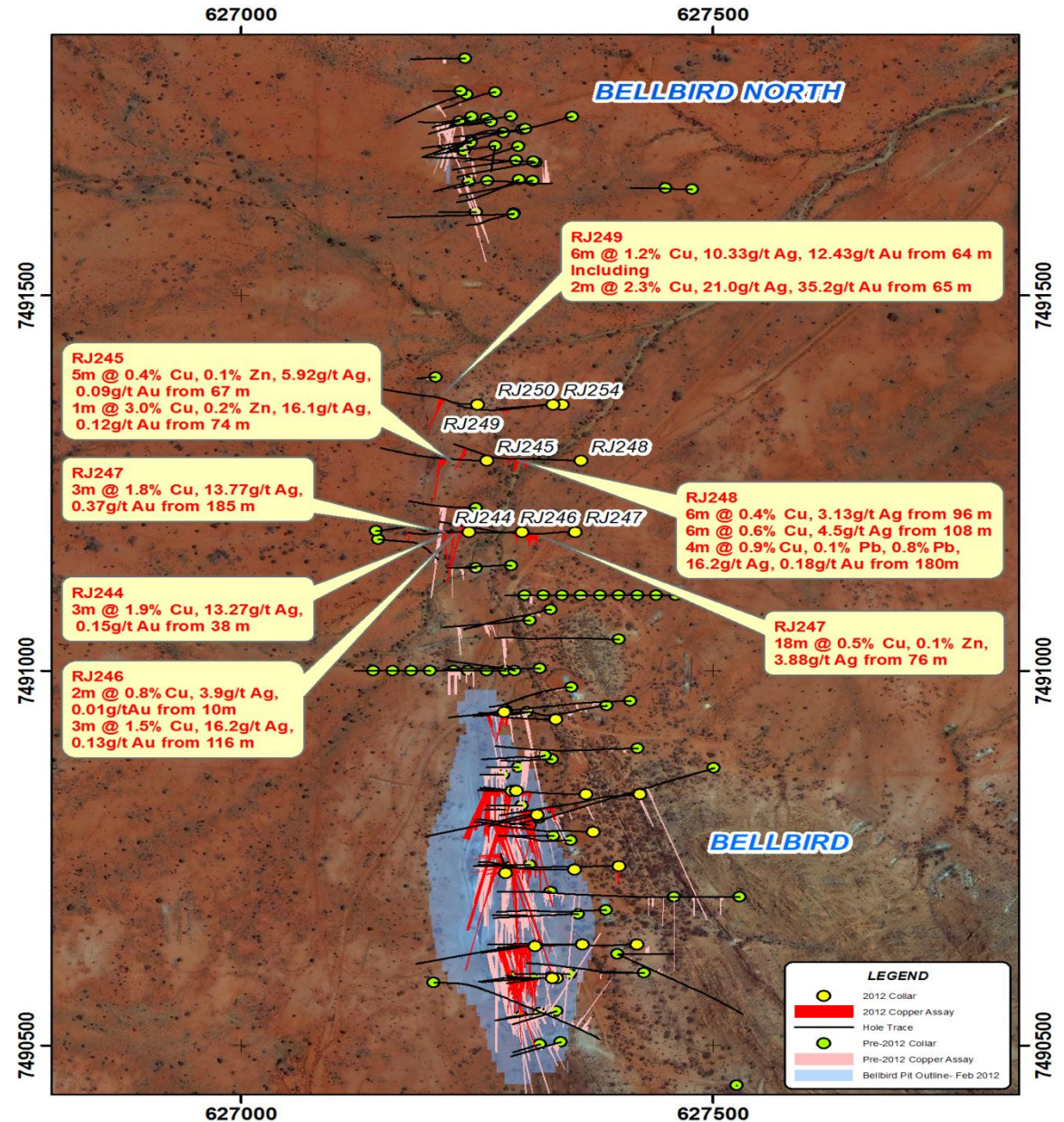
- 18.9m @ 2.44 % Cu, 16.3 g/t Ag RJ222
- 15.5m @ 1.55% Cu, 28.5 g/t Ag RJ221
- 10m @ 4.64% Cu, 23.5 g/t Ag RJ217



Bellbird extension

6m @ 1.2% copper, 10.3g/t silver and **12.43g/t gold** from 64 m (down hole), including

2m @ 2.3% copper, 21g/t silver and **35.2g/t gold** from 65 m

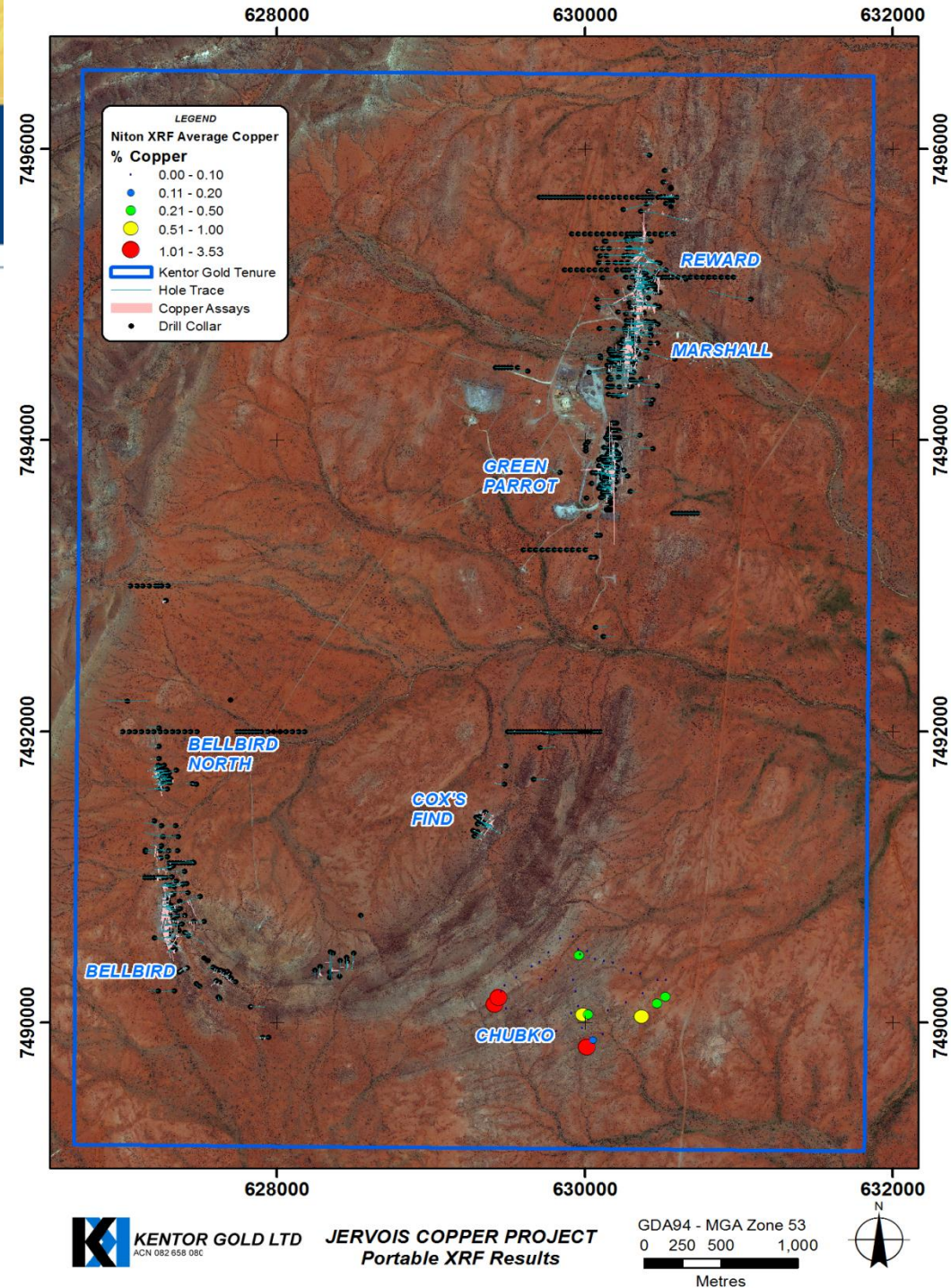


Chubko Prospect

Discovered due to work conducted by the NTGS in collaboration with the CSIRO led Centre of Excellence for 3D Mineral Mapping

ASTER (Advanced Space-borne Thermal Emission and Refraction Radiometer)

Area 1.3 km x 700m of anomalous copper and gold on surface



Jervois – The future

- Resource Update October
- Further exploration drilling
- Feasibility Study 2013

- Targeting a copper flotation project producing >20,000 tpa contained copper plus gold and silver credits

For more information contact

Simon Milroy on +61 7 3071 9003

or visit www.kentorgold.com

ASX Code: KGL

Level 9, 40 Creek Street,
Brisbane, QLD, AUSTRALIA 4000

Fax: +61 7 3071 9008

Forward-Looking Statements:

This presentation includes certain “Forward-Looking Statements”. All statements, other than statements of historical fact, included herein, including without limitation, statements regarding forecast cash flows and potential mineralisation, resources and reserves, exploration results and future expansion plans and development objectives of Kentor Gold Limited are forward-looking statements that involve various risks and uncertainties. There can be no assurance that such statements will prove to be accurate and actual results and future events could differ materially from those anticipated in such statements.

Competent Persons Statements

- The data in this report that relates to Mineral Resource Estimates for Jervois is based on information evaluated by Mr Simon Tear who is a Member of The Australasian Institute of Mining and Metallurgy (MAusIMM) and who has sufficient experience relevant to the style of mineralisation and type of deposit under consideration and to the activity which he is undertaking to qualify as a Competent Person as defined in the 2004 Edition of the Australasian Code for Reporting of Exploration Results, Mineral Resources and Ore Reserves (the “JORC Code”). Mr Tear is a full-time employee of Hellman & Schofield Pty Ltd and he consents to the inclusion in the report of the Mineral Resource in the form and context in which they appear.
- The exploration data in this report relating to the Jervois project is based on information compiled by Rudy Lennartz, who is a member of the Australian Institute of Mining and Metallurgy and a full time employee of Jinka Minerals Ltd. Mr. Lennartz has sufficient experience which is relevant to the style of the mineralisation and the type of deposit under consideration and to the activity to which he is undertaking, to qualify as a Competent Person as defined in the 2004 Edition of the Australasian Code for Reporting of Exploration Results, Mineral Resources and Ore Reserves. Mr. Lennartz has consented to the inclusion of this information in the form and context in which it appears in this report.