

MURRIN MURRIN GOLD RESULTS MALCOLM / CHALLENGER

HIGHLIGHTS

GOLD RESULTS

- **MMRC14 13 metres @ 6.26 g/t**
- **MMRC13 2 metres @ 3.46 g/t**
- **MMRC03 4 metres @ 3.68 g/t**
- **MMRC07 3 metres @ 3.75 g/t**
- **MMRC08 1 metre @ 2.85 g/t (EOH)**

The Company is pleased to report drilling results from the Malcolm /Challenger open pits at the Company's 100% owned Murrin Murrin project.

Mr Sullivan said "These results enhance previous results reported in the Prospectus and further the Company's understanding of the structure. The results will be used, along with a further phase of drilling, to quantify resources available from expansion of the two pits, which were only mined to a depth of 30 metres".

The table of results are listed in appendix A

Malcolm Challenger Gold Project

Twenty RC holes (1410 metres) were drilled along the eastern side of the Malcolm and Challenger gold pits. The step out holes were designed to test for extensions of gold mineralisation under and between the two pits. The attached plan view shows the drill hole locations (figure 1).

The results provide further support to previous drilling that the mineralisation below the pit floor is continuous down to at least 55 metres. Schematic sections of the mineralisation intersected in

MMRC 3, 13 and 14 are shown in figures 2 – 4. The mineralisation remains open at depth.

The drill hole density at the Malcolm and Challenger project is at a high level with the majority of holes drilled on a 40m X 40m pattern.

Further infill and deeper drilling is currently being planned to test continuity of mineralisation between sections and down dip.

Copper Results – Ilgarari and Nangaroo Projects

The Company is awaiting final results from the recently completed drilling programs at the Ilgarari and Nangaroo copper projects. It is expected that these results will be released later in the month.

Yours sincerely,



Jamie Sullivan
Managing Director

The information in this report that relates to Exploration Results and Mineral Resources is based on information compiled by Mr Mark Hill who is a member of The Australasian Institute of Geoscientists. Mr Hill is a Principal Consultant with Exman Consultancy. Mr Hill has sufficient experience, which is relevant to the style of mineralization and type of deposit under consideration and to the activity which he is undertaking to qualify as a Competent Person as defined in the 2004 Edition of the "Australasian Code for Reporting of Mineral Resources and Ore Reserves. Mr Hill consents to the inclusion in the report of the matters based on information provided in the form and context in which it appears.



Figure 1: Plan view of current drilling over the Malcolm – Challenger Project

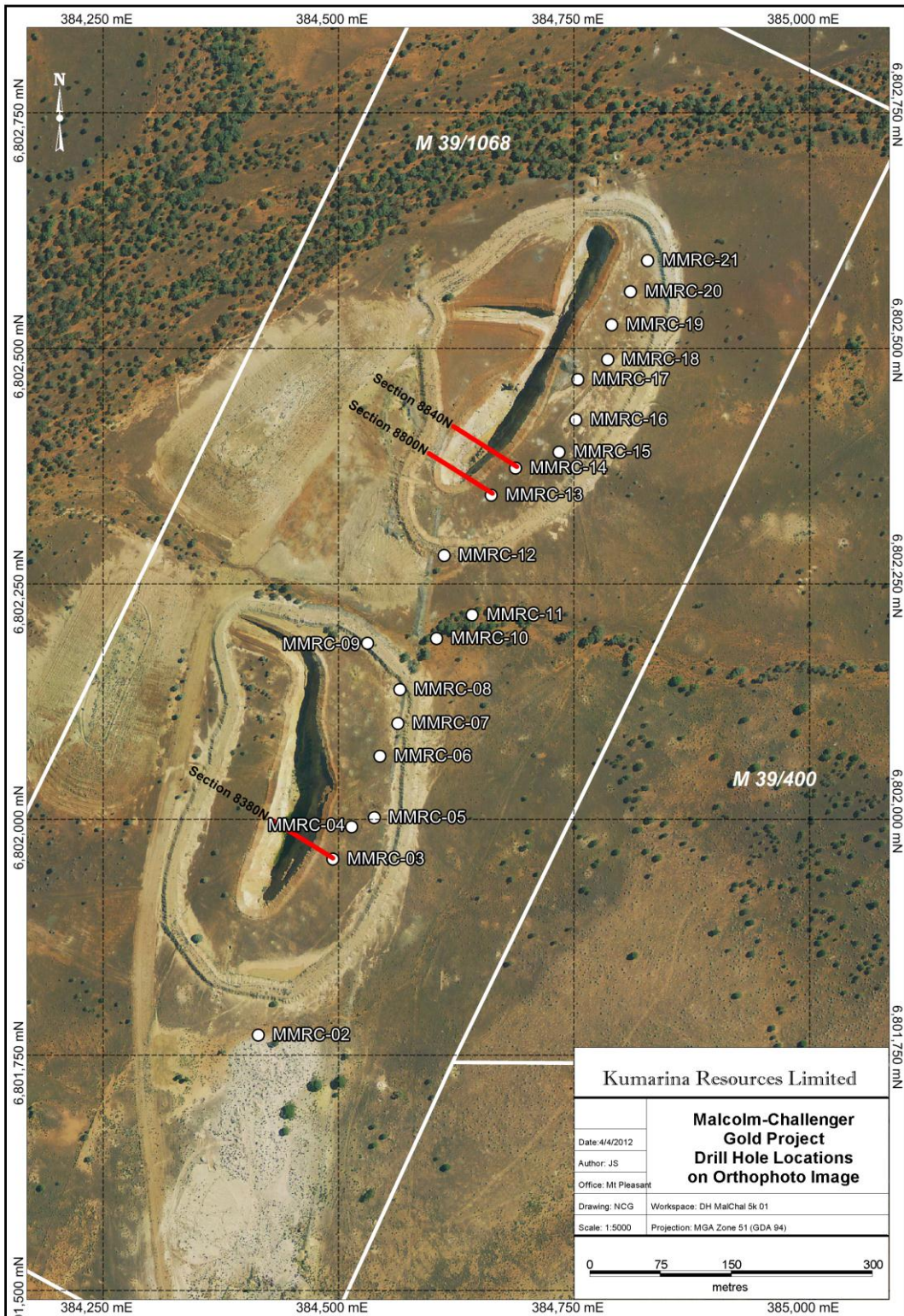


Figure 2: Section 8380 N

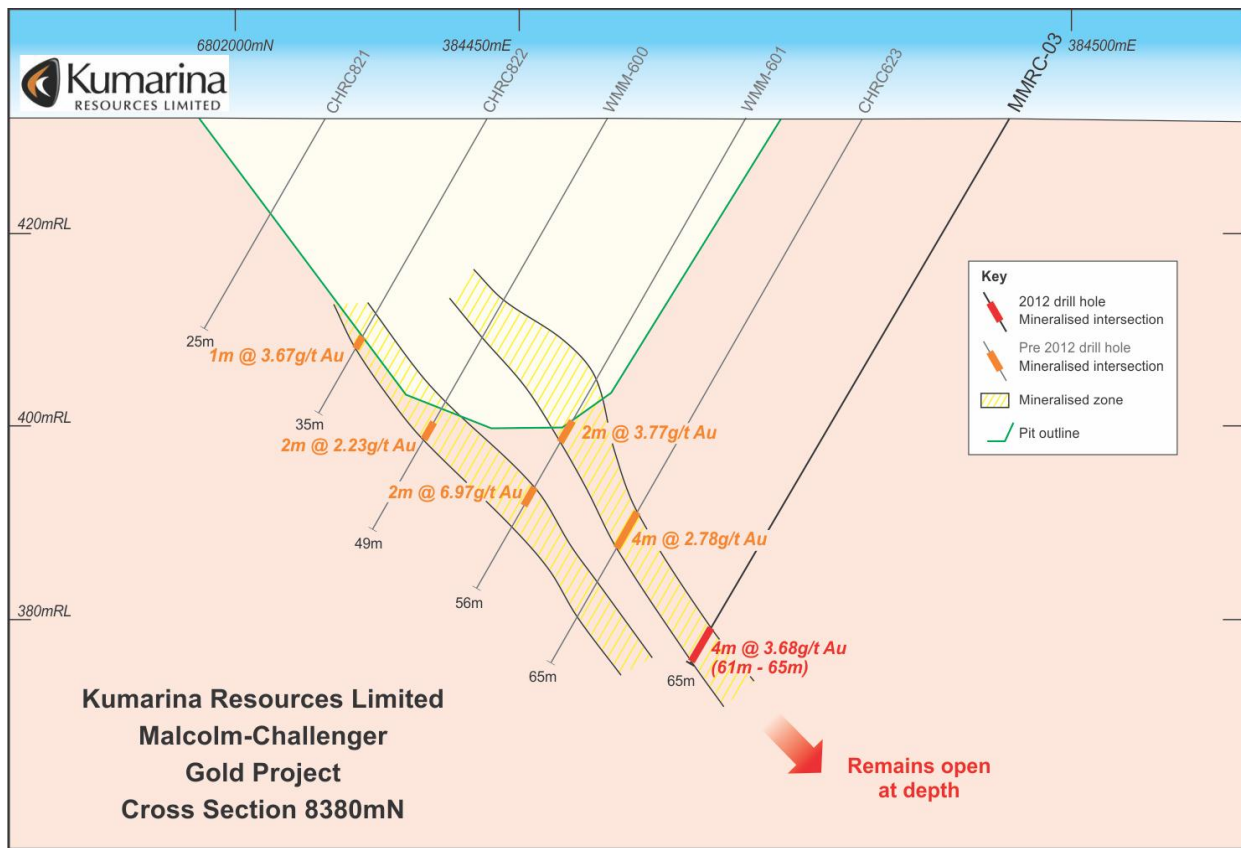


Figure 3 : Section 8800 N

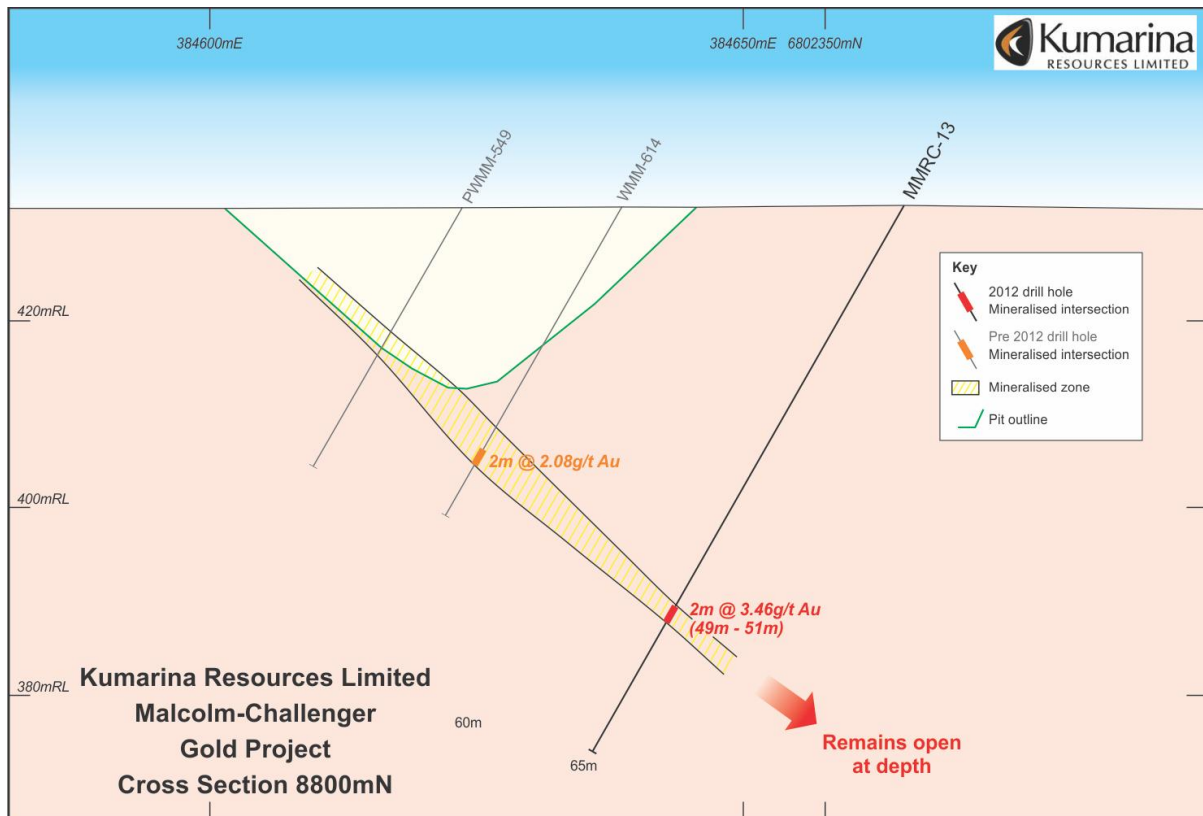


Figure 4 : Section 8840 N

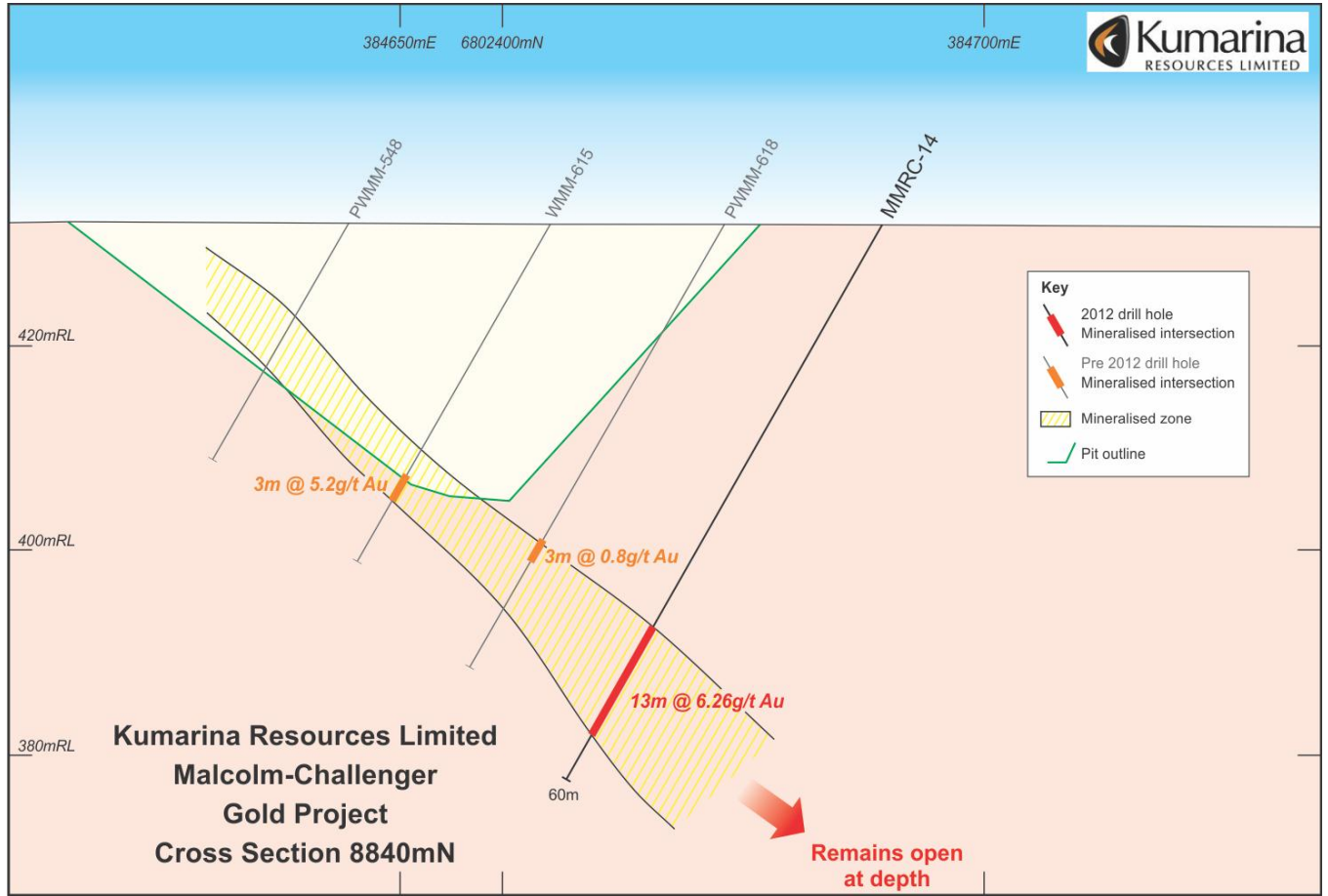
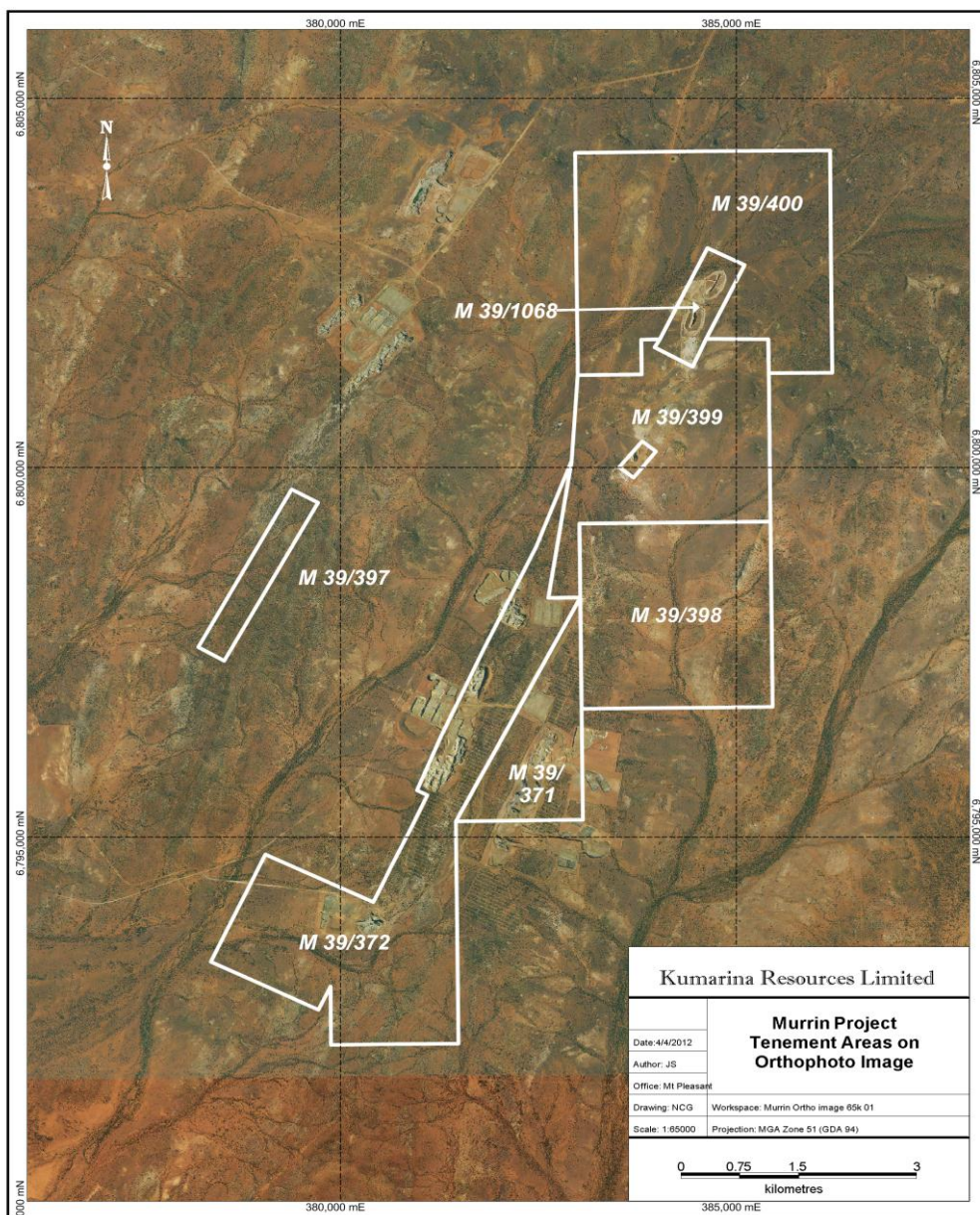


Figure 5 : Murrin Murrin Project Tenement Plan



(Minerals rights to gold and base metals apply to M39/370 and M39/371)



Appendix A

Significant Intercepts – Murrin Murrin Gold Feb 2012

Hole ID	Easting	Northing	From M	To M	Au (g/t)	Intercept width & Au grade
MMRC02	384415	6801773	39	40	1.76	2 metres@1.60g/t
MMRC02	384415	6801773	40	41	1.43	
MMRC03	384494	6801960	61	62	5.01	4 metres@3.68g/t
MMRC03	384494	6801960	62	63	3.23	
MMRC03	384494	6801960	63	64	3.73	
MMRC03	384494	6801960	64	65	2.74	
MMRC06	384544	6802069	60	61	1.2	1 metre@ 1.2g/t
MMRC07	384563	6802104	64	65	5.28	3 metres@ 3.75g/t
MMRC07	384563	6802104	64	65	5.25	
MMRC07	384563	6802104	65	66	0.72	
MMRC08	384565	6802140	61	62	2.84	1 metre @ 2.84g/t EOH
MMRC12	384612	6802282	65	66	2.48	2 metres@1.51g/t
MMRC12	384612	6802282	66	67	0.53	
MMRC13	384662	6802346	49	50	5.43	2 metres@3.46g/t
MMRC13	384662	6802346	49	50	1.48	
MMRC14	384688	6802375	44	45	8.56	13 metres@6.26g/t
MMRC14	384688	6802375	45	46	0.58	
MMRC14	384688	6802375	46	47	50.1	
MMRC14	384688	6802375	47	48	2.32	
MMRC14	384688	6802375	48	49	0.71	
MMRC14	384688	6802375	49	50	1.41	
MMRC14	384688	6802375	50	51	5.28	
MMRC14	384688	6802375	51	52	5.33	
MMRC14	384688	6802375	52	53	1.95	
MMRC14	384688	6802375	53	54	0.97	
MMRC14	384688	6802375	54	55	1.23	
MMRC14	384688	6802375	55	56	1.67	
MMRC14	384688	6802375	56	57	1.24	



About Kumarina Resources Ltd

Kumarina is an Australian resource company with two highly prospective copper/gold projects located in Western Australia. The Company listed on the ASX in December 2011 after raising \$10.3 through an IPO.

The Ilgarari Project is located 120kms south of Newman in the South Pilbara and the Murrin Murrin Project is located 50 kms east of Leonora in the NE Goldfields. Both of the Company’s 100% owned projects have substantial historic Copper/Gold production records. Previous underground and open pit workings provide the Company with advanced drill targets and the opportunity to fast track targeted exploration focused on establishing economic resources.

The board and management of Kumarina have significant corporate - financial experience and have been involved in exploring, developing and operating resource projects in Australia over the past 20 years.

