



Mt Isa **Metals**

# Burkina Faso Gold Projects

## Investor Presentation



**Africa Mining & Investment  
Conference**

**Sydney - March 2012**

# Important Information

## Disclaimer

This presentation may contain certain statements and projections provided by or on behalf of Mt Isa Metals Limited (MET) with respect to the anticipated future undertakings. These forward-looking statements reflect various assumptions by or on behalf of MET. Accordingly, these statements are subject to significant business, economic and competitive uncertainties and contingencies associated with exploration and/or mining which may be beyond the control of MET which could cause actual results or trends to differ materially, including but not limited to price fluctuations, exploration results, reserve and resource estimation, environmental risks, physical risks, legislative and regulatory changes, political risks, project delay or advancement, ability to meet funding requirements, factors relating to property title, native title and aboriginal heritage issues, dependence on key personnel, share price volatility, approvals and cost estimates. Accordingly, there can be no assurance that such statements and projections will be realised. MET makes no representations as to the accuracy or completeness of any such statement of projections or that any forecasts will be achieved.

Additionally, MET makes no representation or warranty, express or implied, in relation to, and no responsibility or liability (whether for negligence, under statute or otherwise) is or will be accepted by MET or by any of their respective officers, directors, shareholders, partners, employees, or advisers as to or in relation to the accuracy or completeness of the information, statements, opinions or matters (express or implied) arising out of, contained in or derived from this presentation or any omission from this presentation or of any other written or oral information or opinions provided now or in the future to any interested party or its advisers. In furnishing this presentation, MET undertakes no obligation to provide any additional or updated information whether as a result of new information, future events or results or otherwise.

Nothing in this material should be construed as either an offer to sell or a solicitation of an offer to buy or sell securities. It does not include all available information and should not be used in isolation as a basis to invest in Mt Isa Metals Ltd.

## Competent Persons Statement

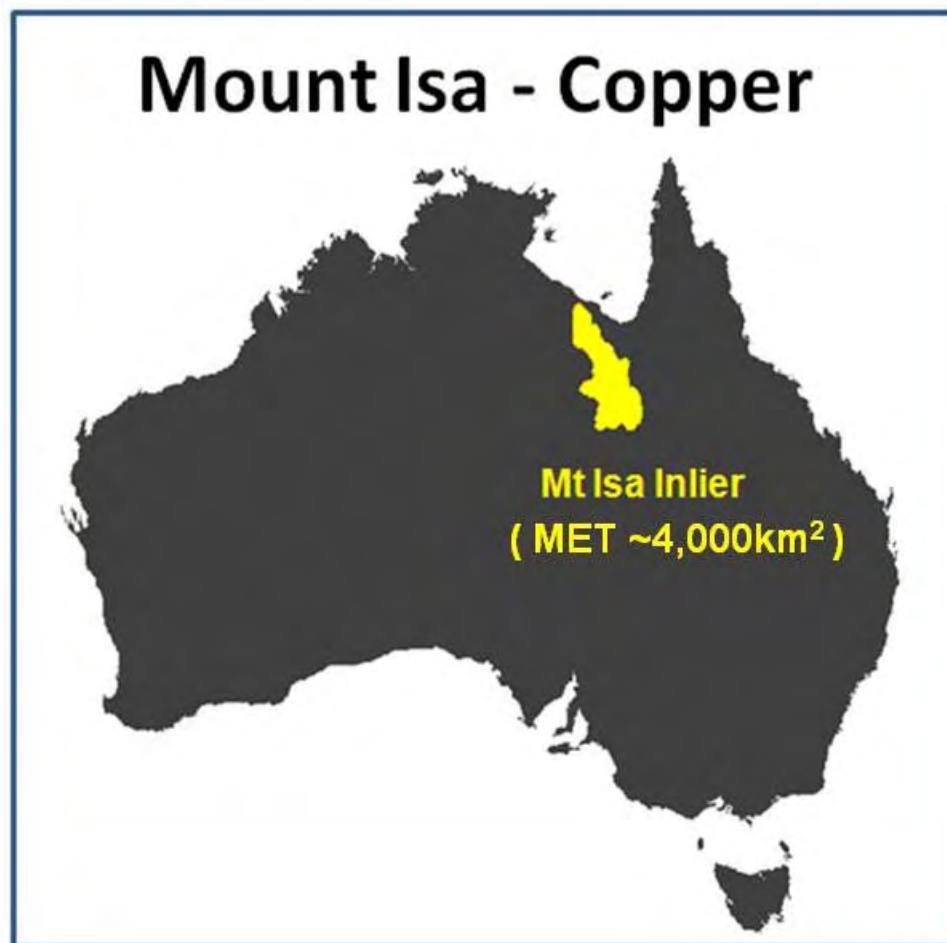
The information in this report that relates to Exploration Results is based on information compiled by Mr Peter Spiers B.Sc (Hons) Geol., who is a Member of The Australasian Institute of Mining and Metallurgy. Mr Spiers is a full time employee of the company.

Mr Spiers has sufficient experience which is relevant to the styles of mineralisation and types of deposits under consideration and to the activity which he is undertaking to qualify as a Competent Person as defined in the 2004 Edition of the 'Australasian Code for Reporting of Exploration Results, Mineral Resources and Ore Reserves'. Mr Spiers consents to the inclusion in the report of the matters based on his information in the form and context in which it appears.



# MET holds strategic land positions in two world-class mineral provinces ...

## Mount Isa - Copper



## West African - Gold



... our focus is gold exploration in West Africa

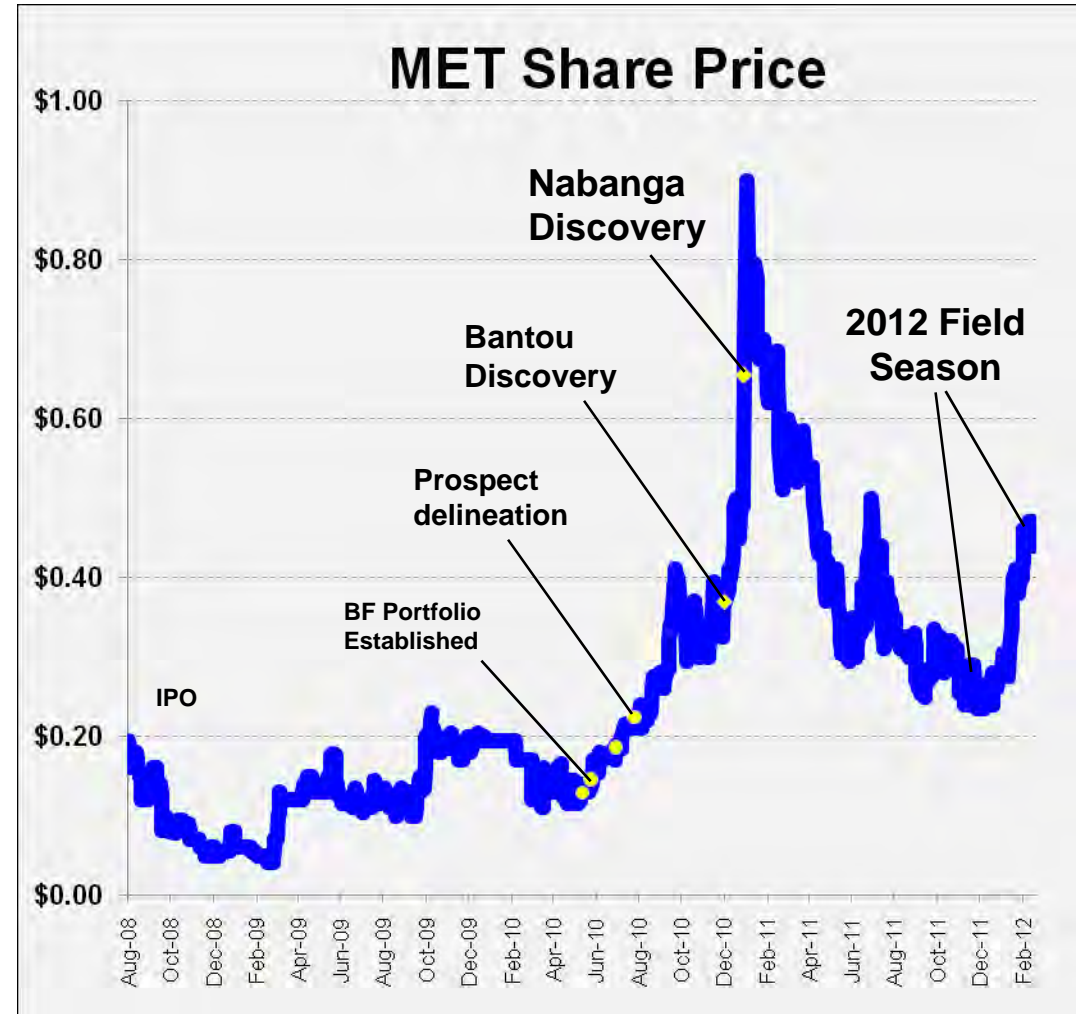


# Shareholder / Financial Overview

( Funded for an ongoing and aggressive gold exploration program in West Africa)

ASX Code:	MET
Shares (ordinary):	163.7m
Options (unlisted):	14.8m
Share Price:	45.5 cents <sup>(1)</sup>
Market Capitalisation:	A\$74m
Cash:	A\$12.4m <sup>(2)</sup>
Major shareholders:	
- D'Aguilar Gold Ltd	31%
- National Nominees	9%
- Tenstar Trading Ltd	6%

} rounded



(1) As at 9<sup>th</sup> March 2012

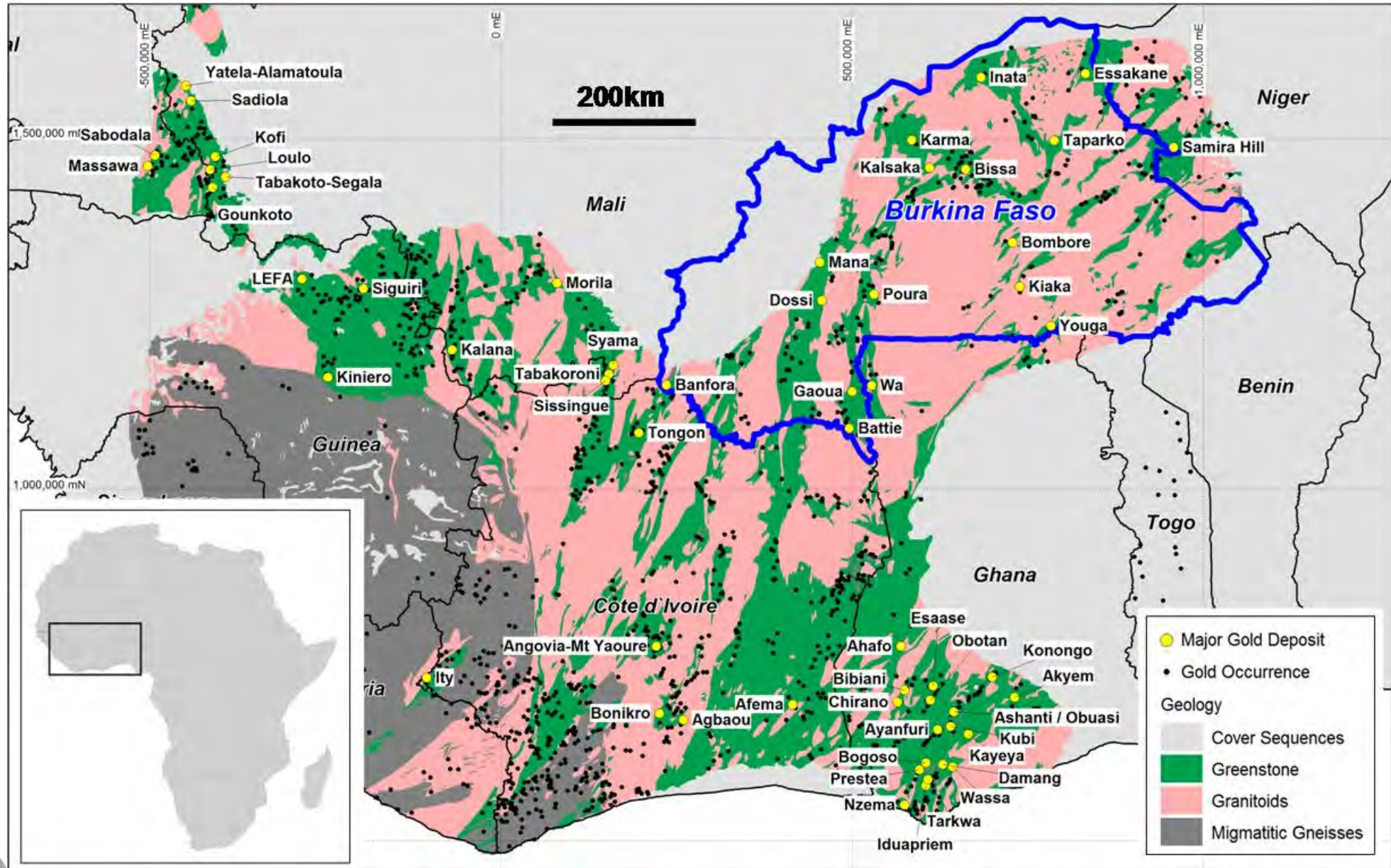
(2) As at 31<sup>st</sup> December 2011 (unaudited)





# West Africa – A World Class Gold Province

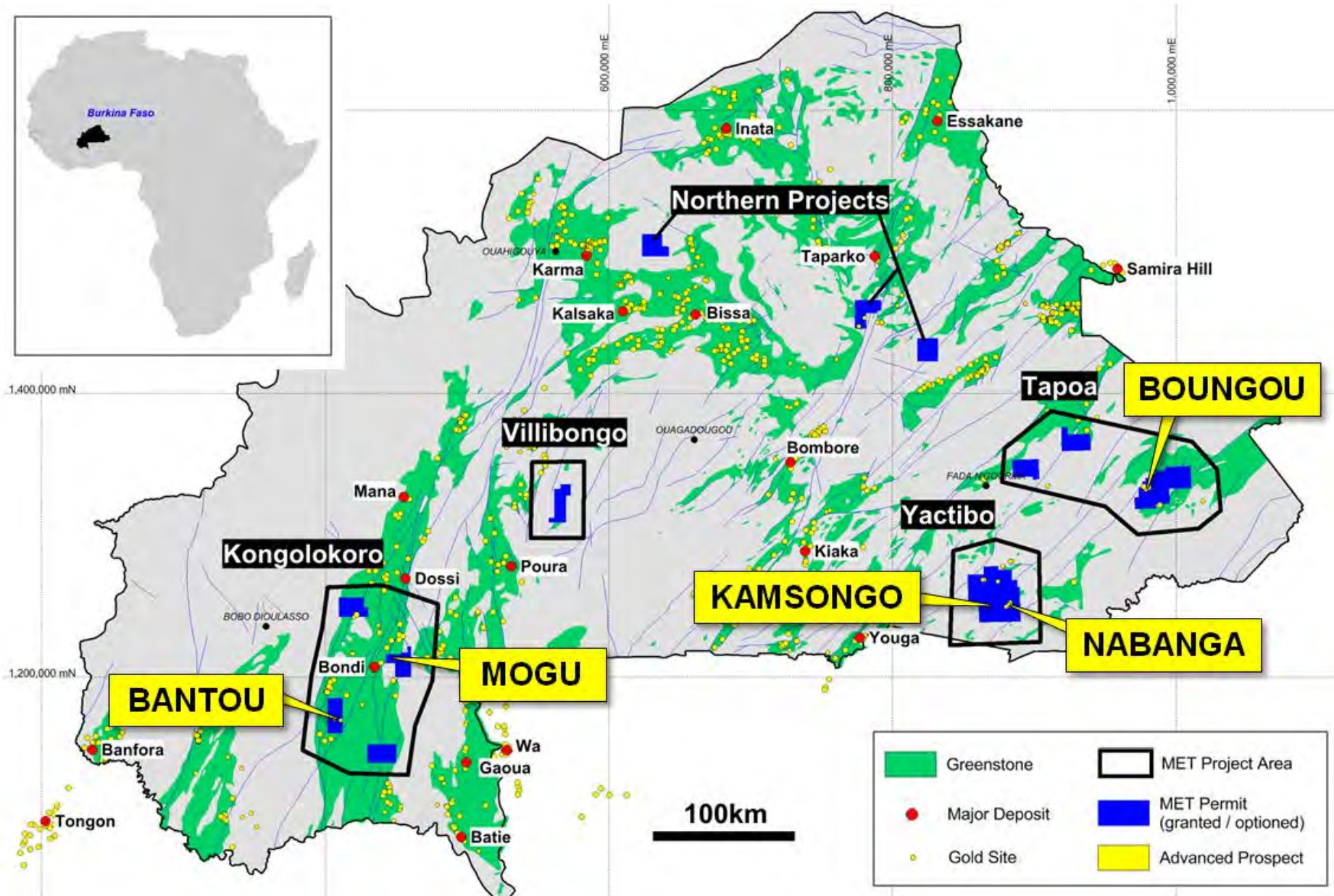
( Host to more than fifty +1Moz gold deposits – MET's projects are in Burkina Faso )





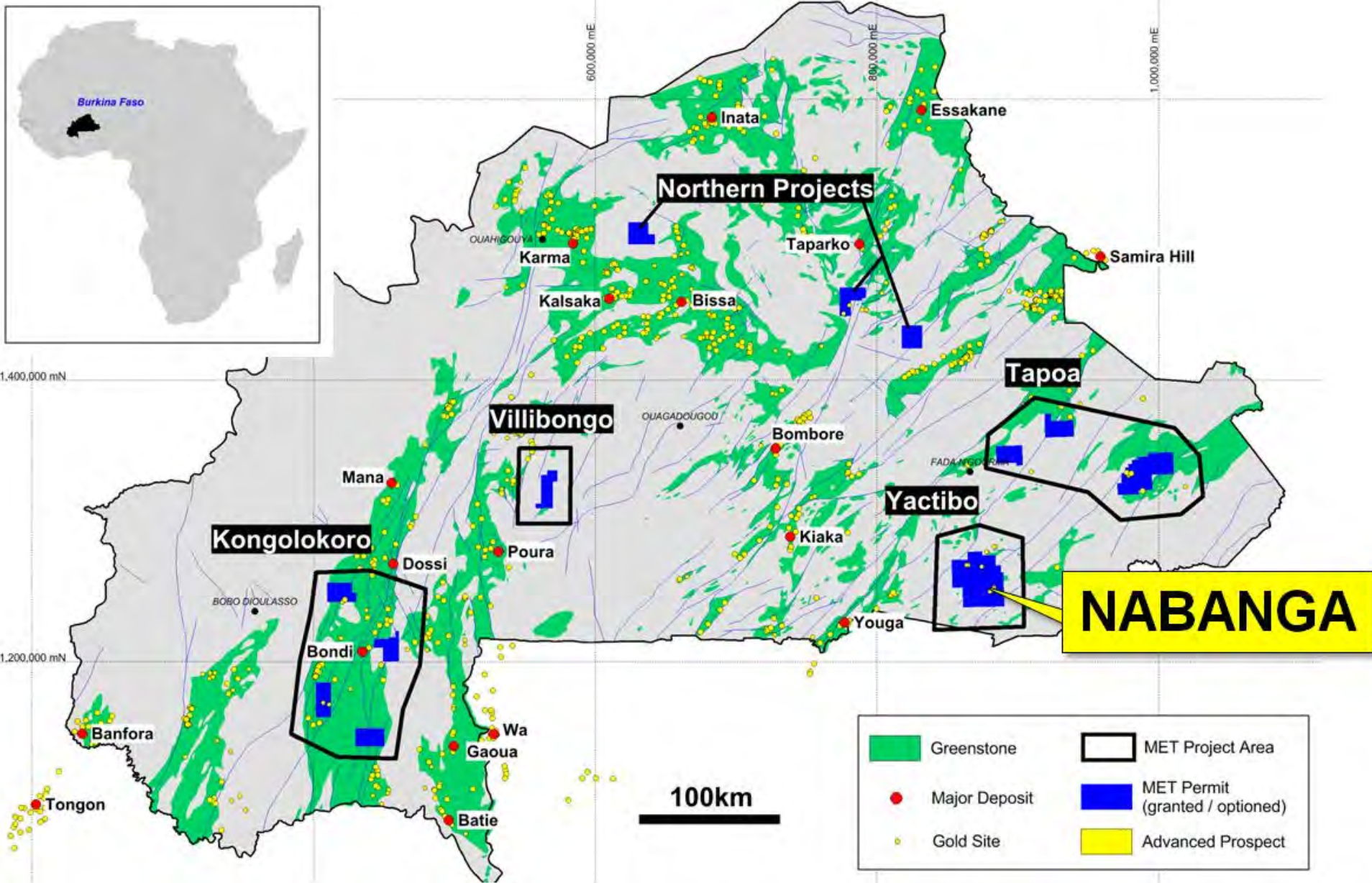
# MET Exploration Permits - Burkina Faso

( ~4,000km<sup>2</sup> permit area\* – Multiple advanced gold prospects)



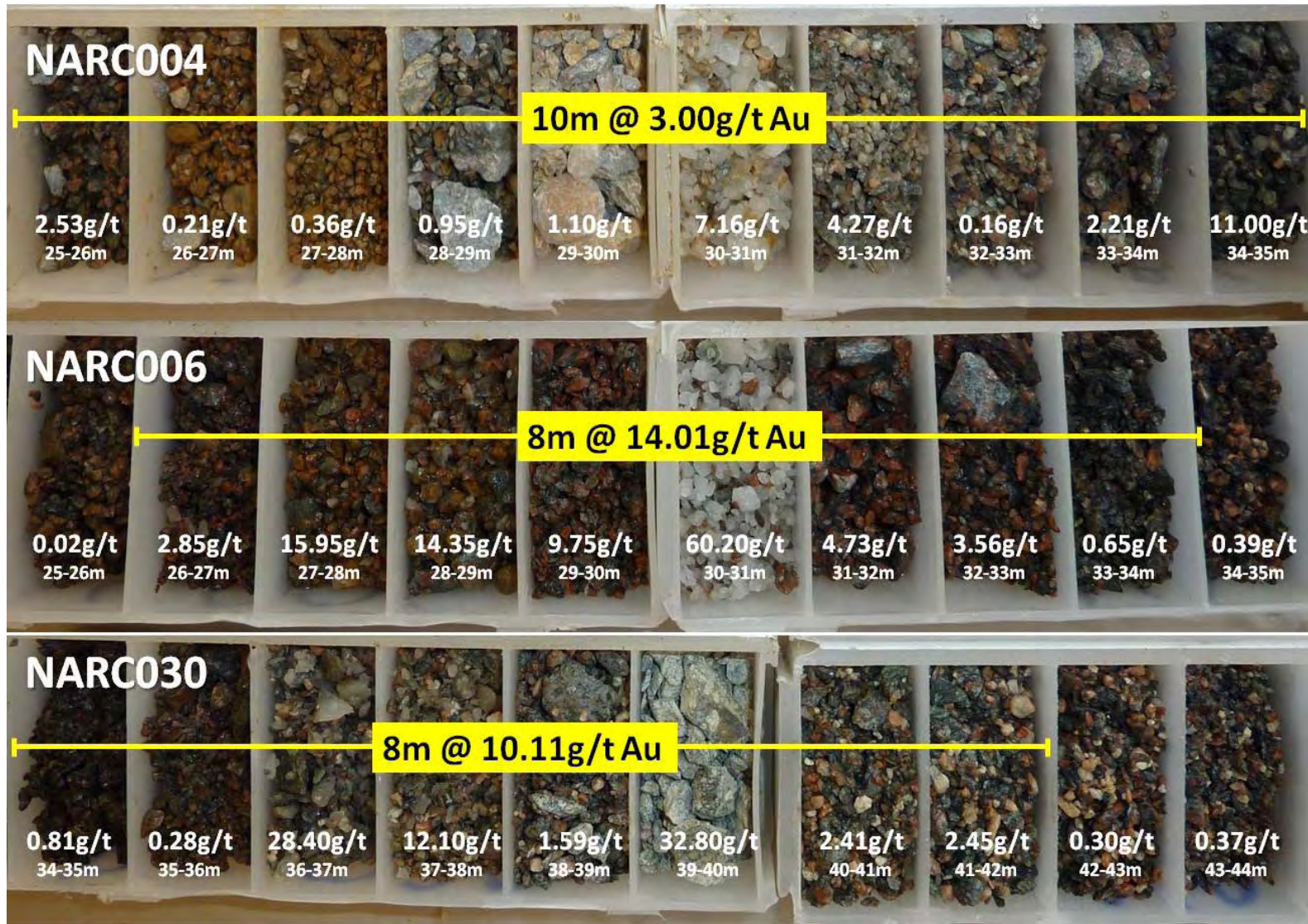


# Nabanga – A New Gold Discovery





# Nabanga – A High Grade Gold System



Hole ID	Intersections*	From (m)
NARC004	10m @ 3.00g/t	25
NARC006	8m @ 14.01g/t	26
NARC011	3m @ 24.62g/t	59
NARC030	8m @ 10.11g/t	34
NARC046	5m @ 29.34g/t	30
NARC052	4m @ 24.98g/t	25
NARC070	8m @ 14.49g/t	71
NARC100	3m @ 20.49g/t	72
NARC114	10m @ 17.70g/t	51
NARC131	4m @ 16.06g/t	21
NARC135	5m @ 22.99g/t	74
NARC139	3m @ 20.77g/t	33
NARC151	3m @ 20.12g/t	110
NARC172	6m @ 14.44g/t	49
NARC173	6m @ 48.48g/t	74
NARC174	5m @ 26.34g/t	87
NARC190	3m @ 23.46g/t	105
NARC192	8m @ 9.48g/t	123
NARC199	4m @ 17.25g/t	28

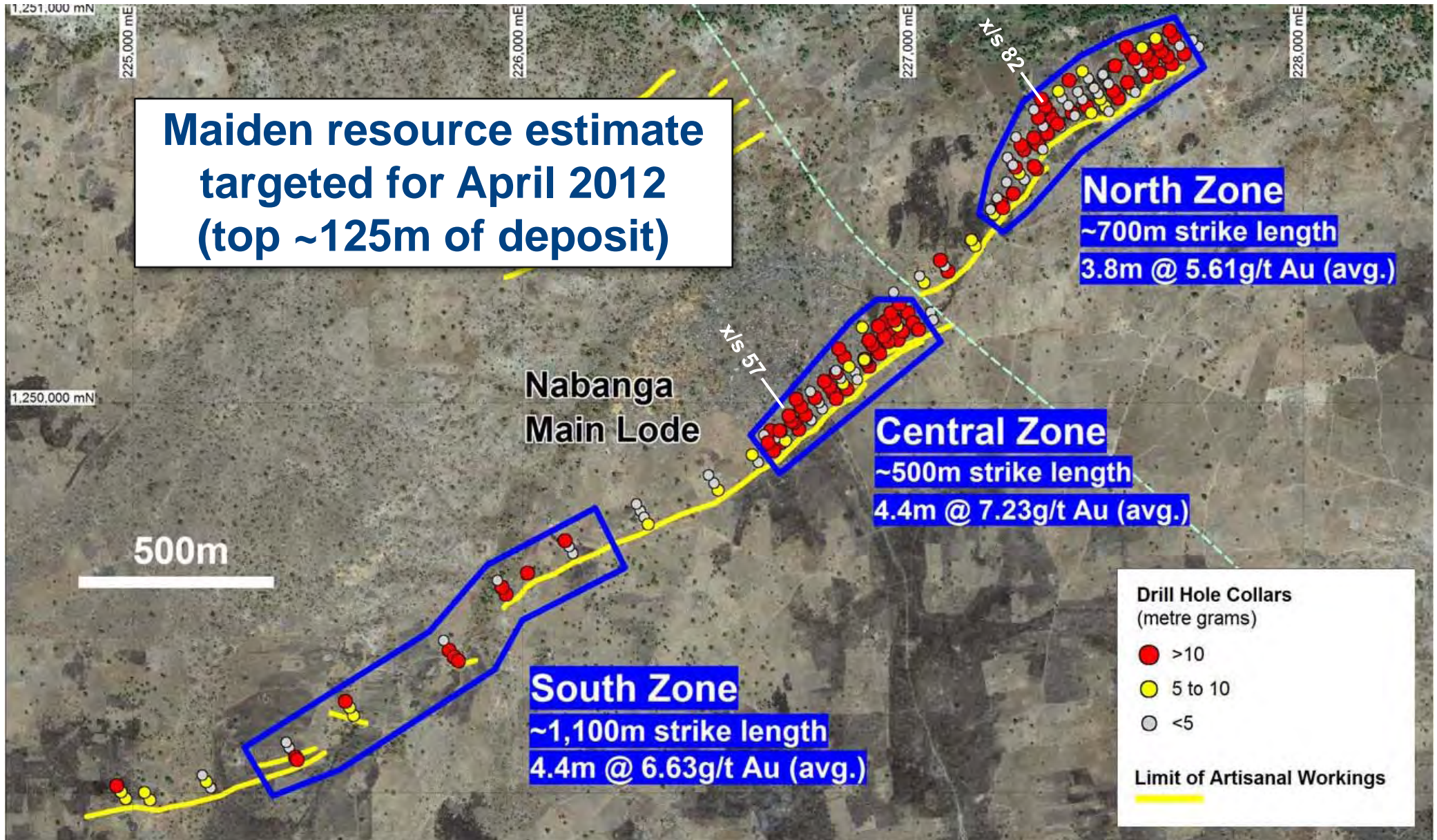
\* Selection of highest grade intersections from approx. 200 RC drill holes completed to date.

Reverse circulation (RC) drill chips.



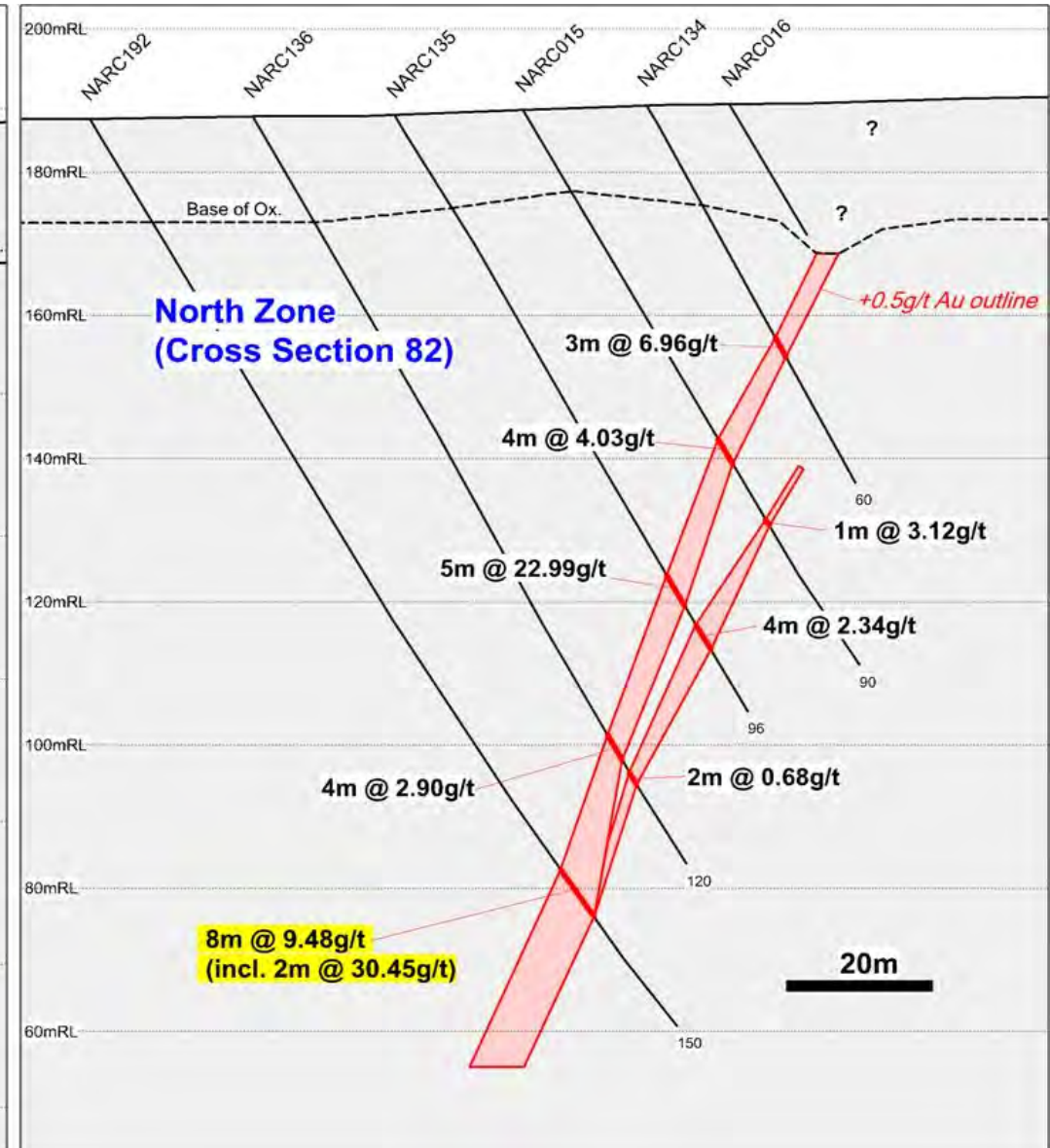
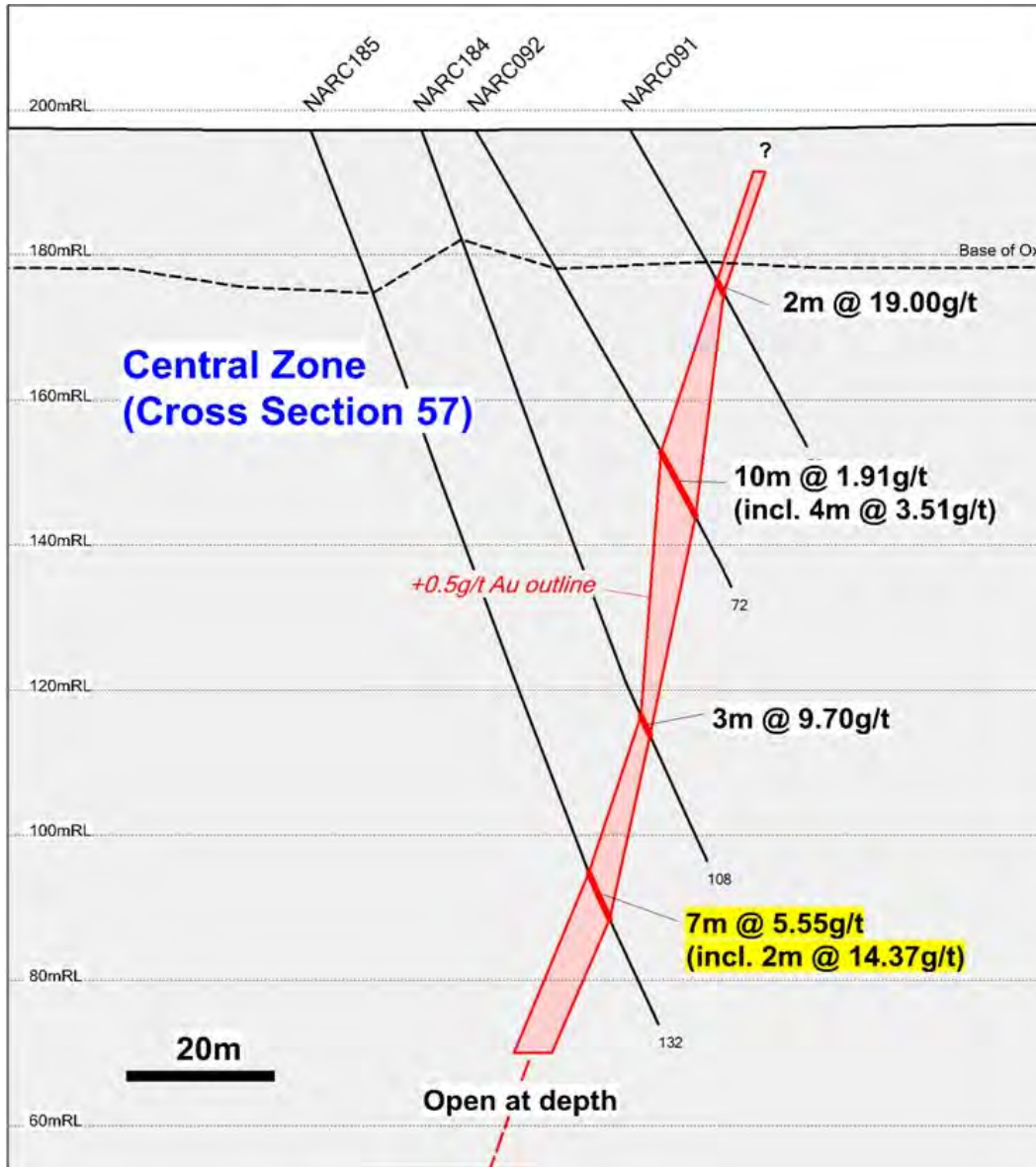


# Nabanga – 3.6km Strike Length / RC Drilling



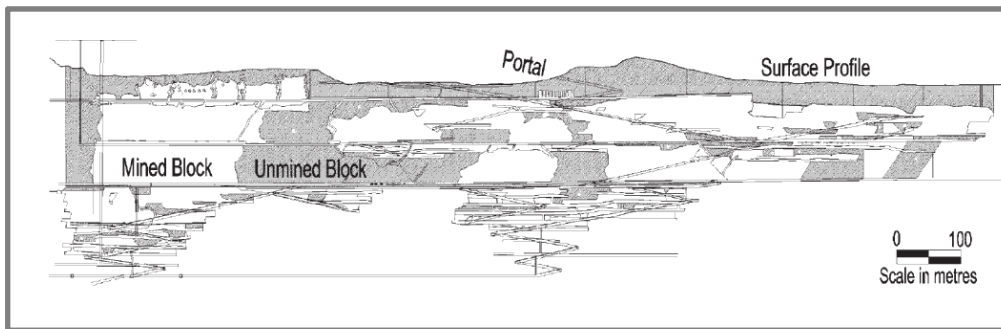
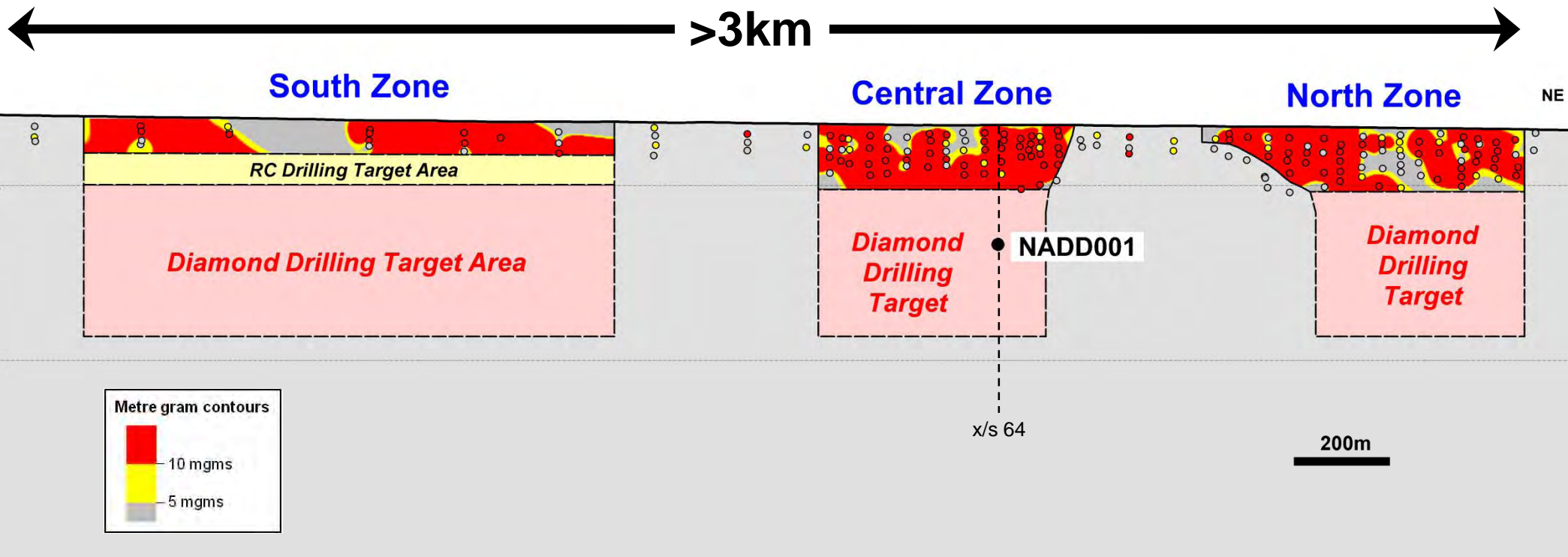


# Nabanga - High Grade Gold Mineralisation Open at Depth ( below 125m)





# Nabanga Longitudinal Section - Significant Depth Potential

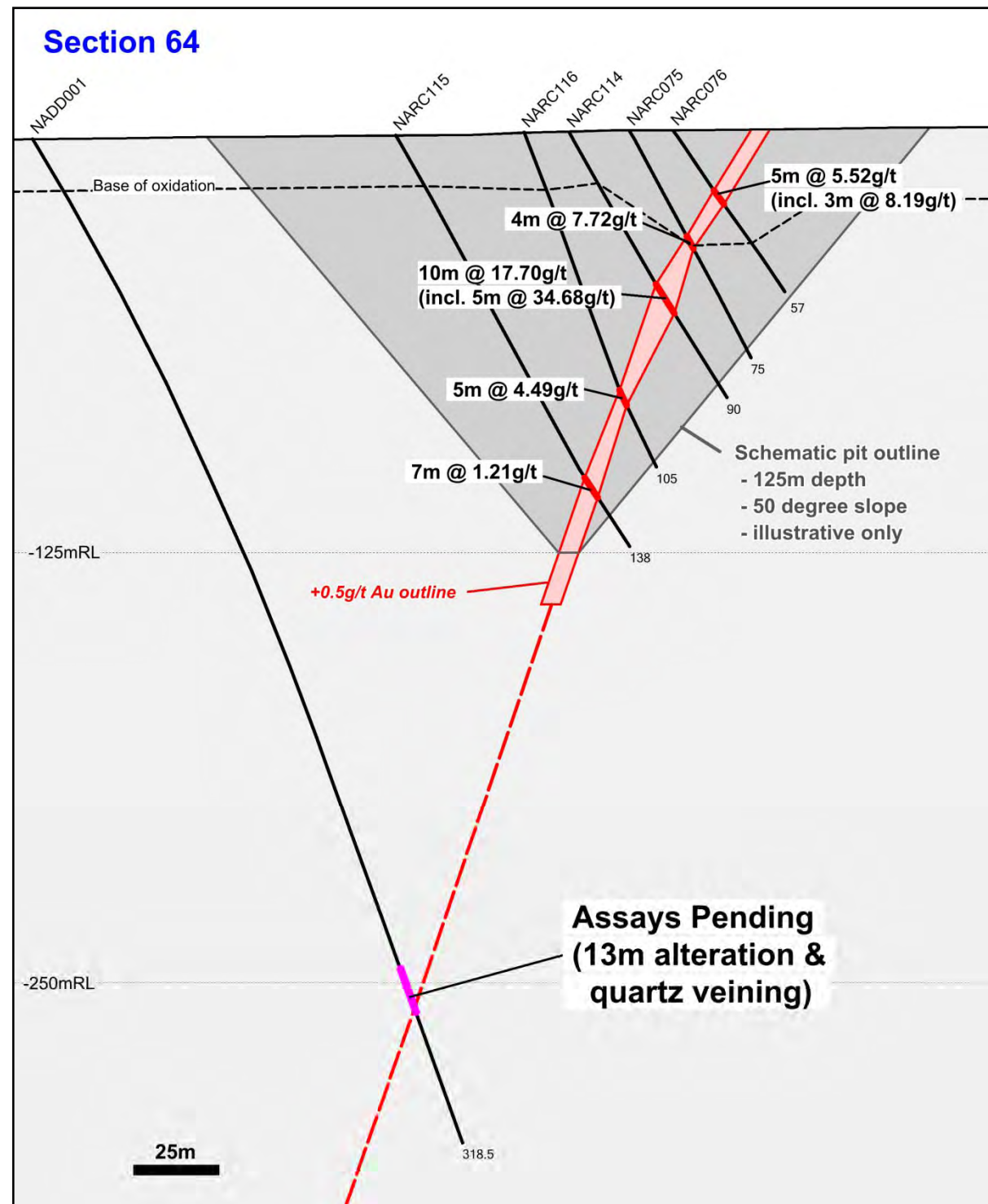


## Poura Deposit / Burkina Faso (long section to scale)

- 1.5km strike length / quartz vein associated
- ~300m mined depth
- 3.5Mt @ 12.5 g/t for 1.4Mozs (production)

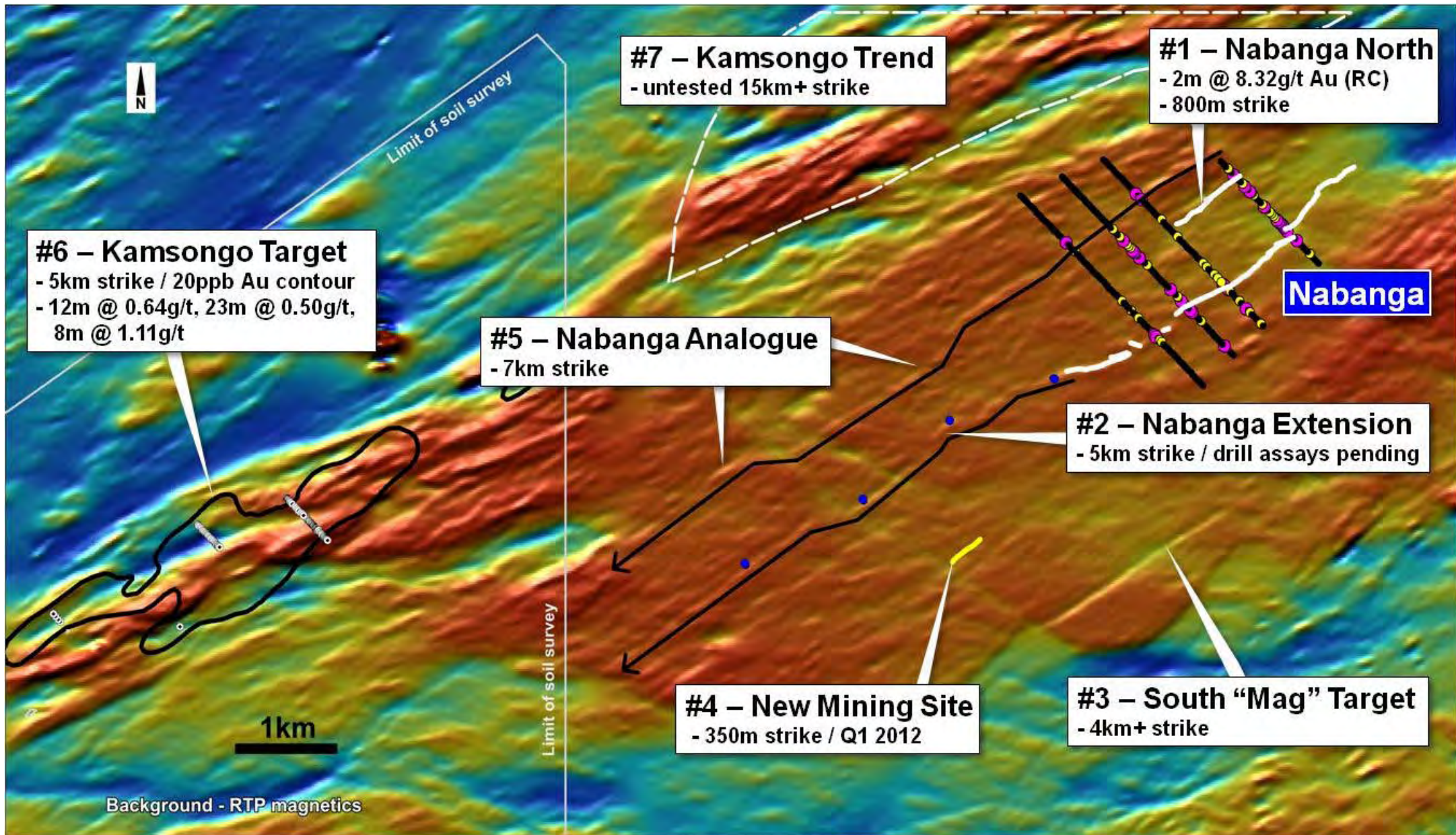


# Nabanga - First Deep Diamond Drill Hole Intersected Alteration and Quartz Veining at ~250m Depth



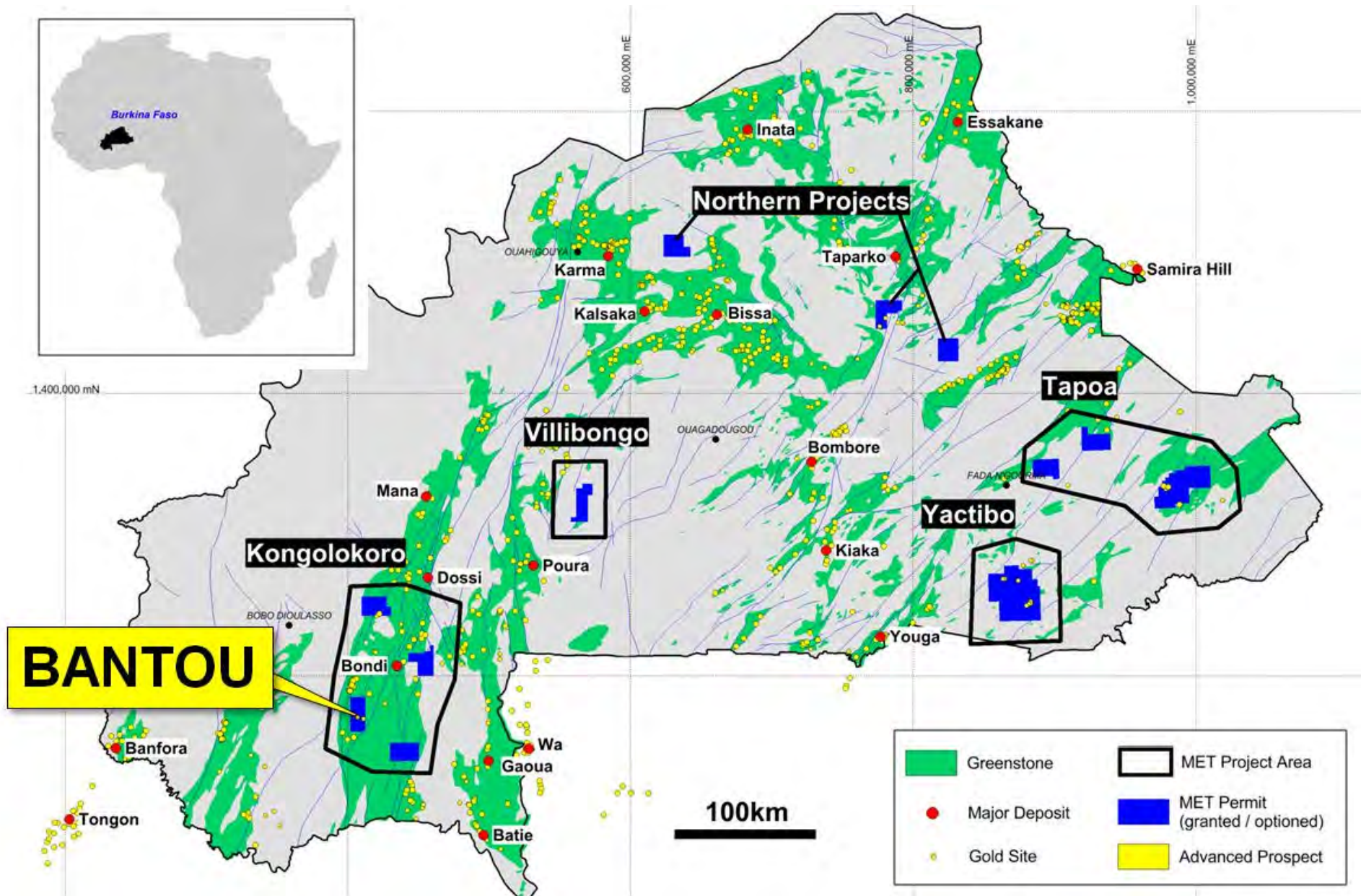


# Nabanga – “Camp-scale” Targets





# Bantou – A New Gold Discovery





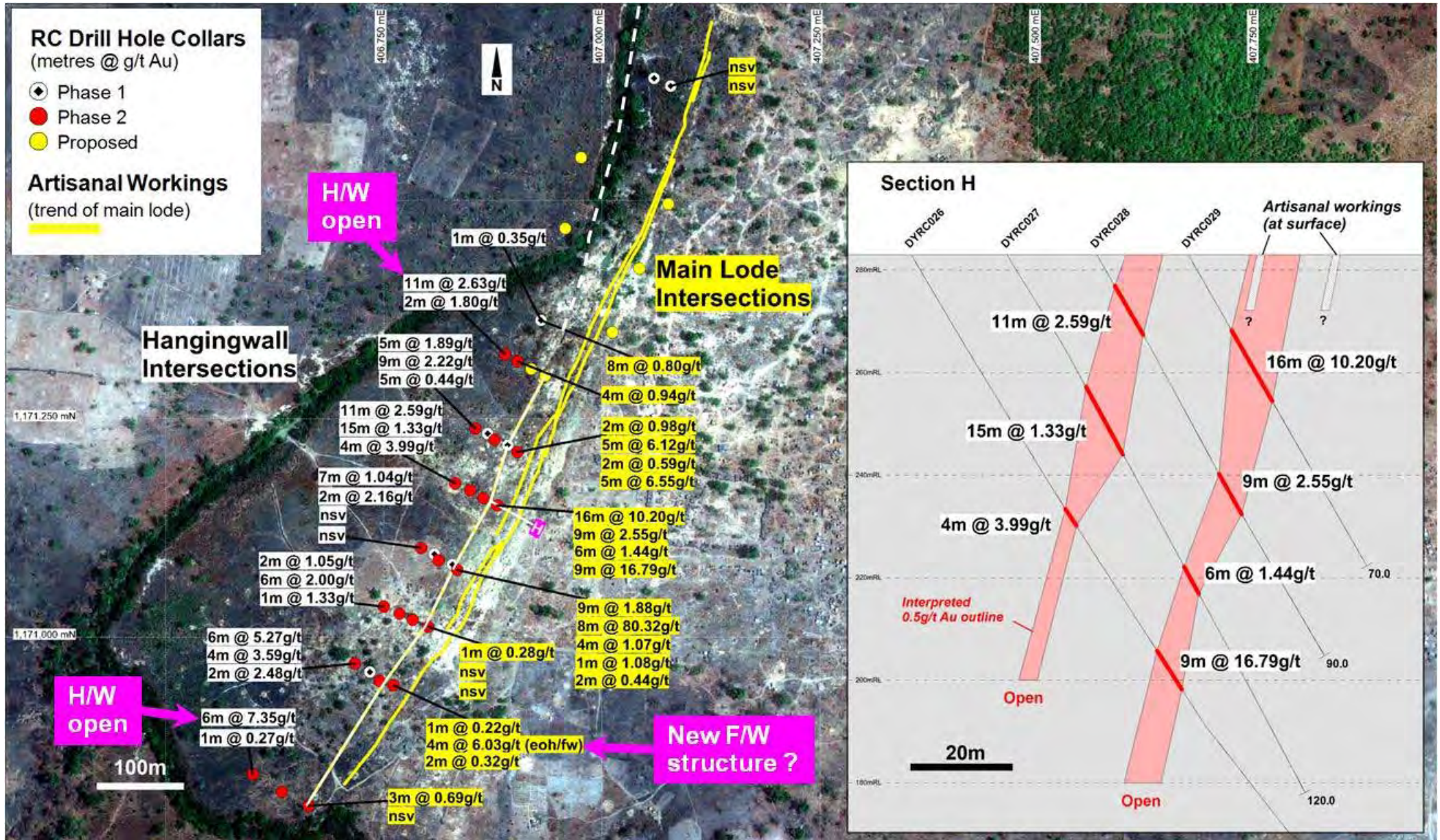
# Bantou – Multiple Quartz Lodes Over a 1km Strike Length





# Bantou – High Grade Near-surface Intersections

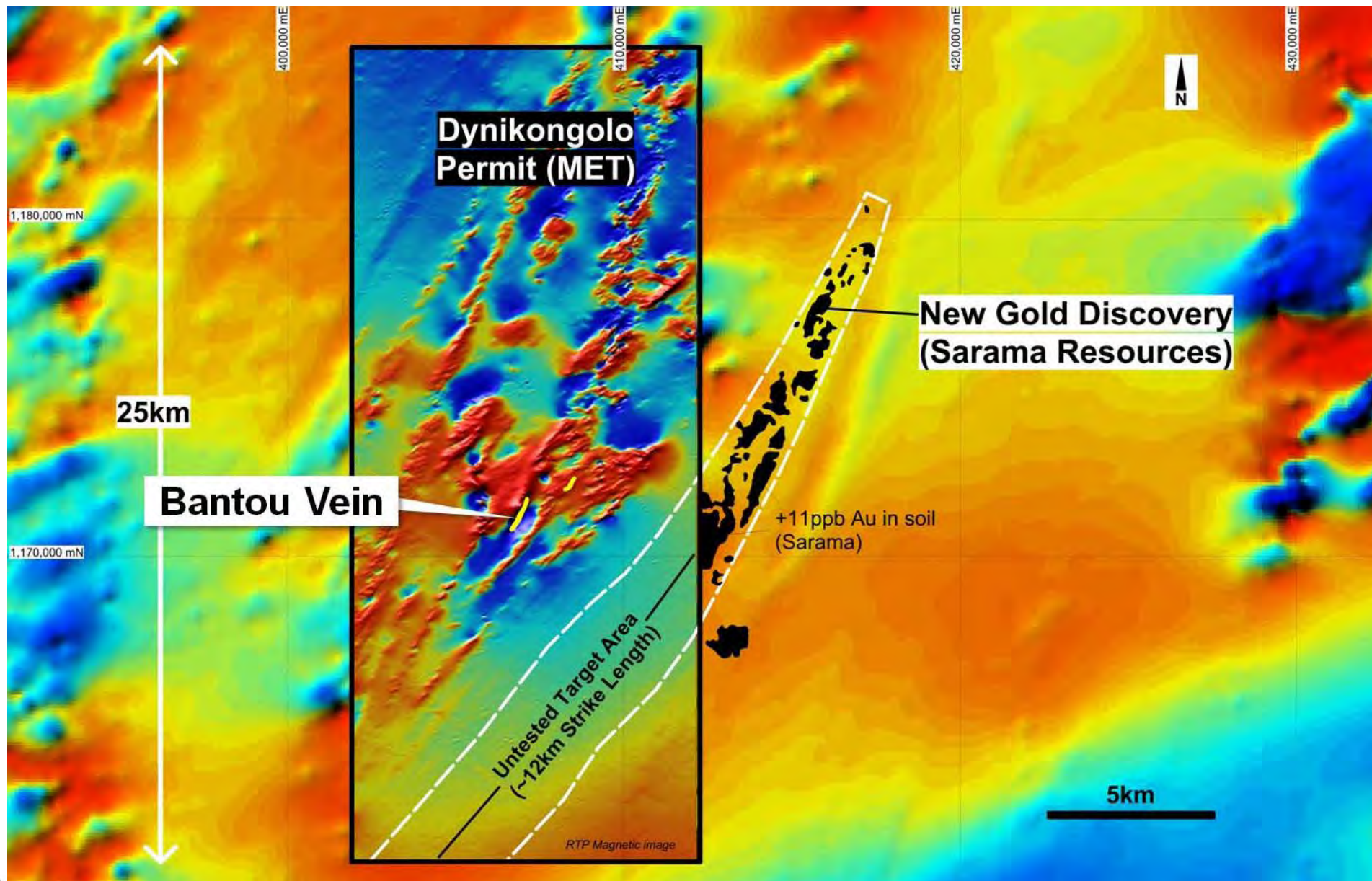
( Multiple structures defined / strike extensions to be tested / resource estimate pending )





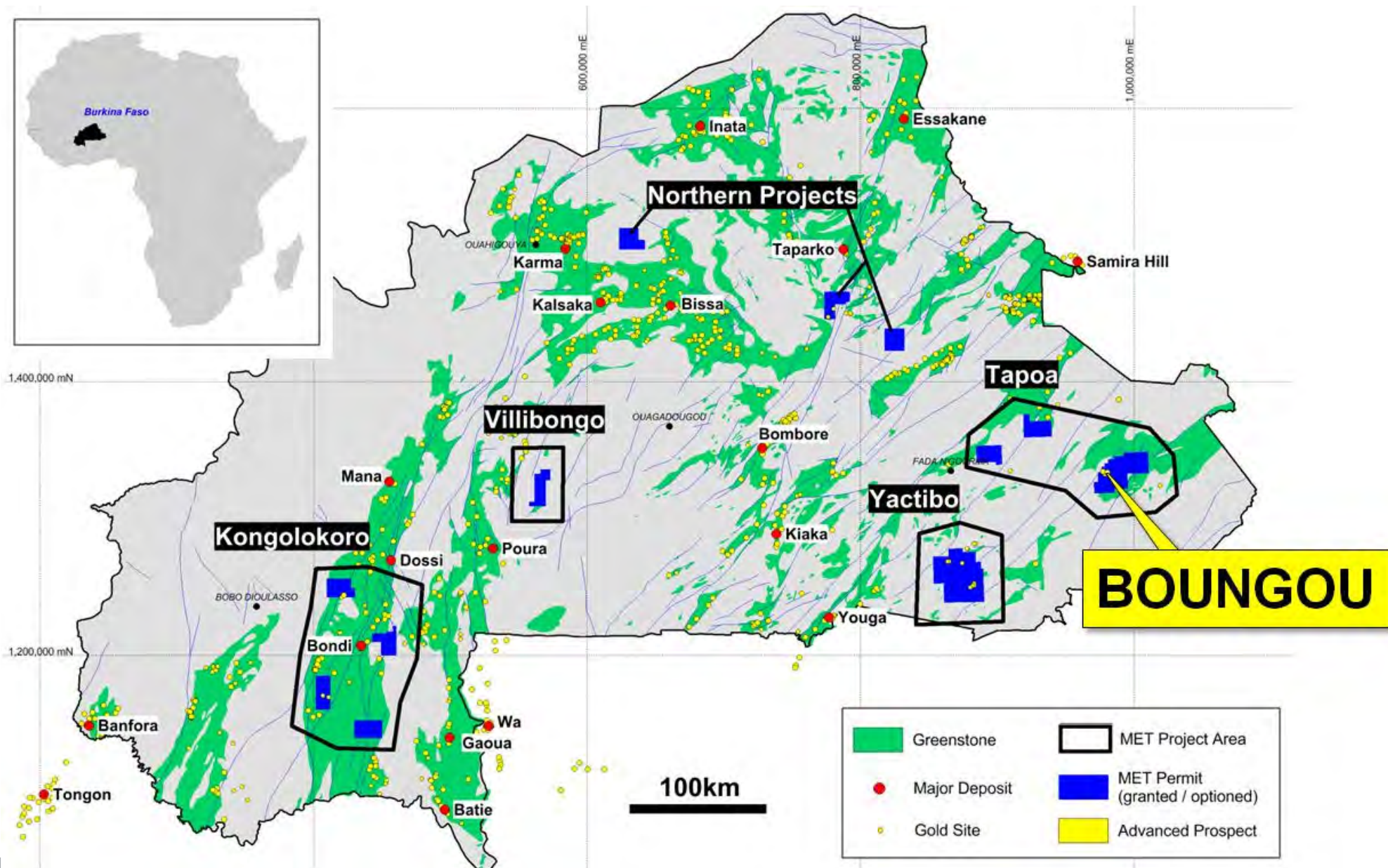
# Bantou – New Regional Gold Targets

( Structural targets defined in MET geophysics / new 3<sup>rd</sup> party gold discovery on adjacent permit )





# Boungou – Maiden RC Drilling In Progress

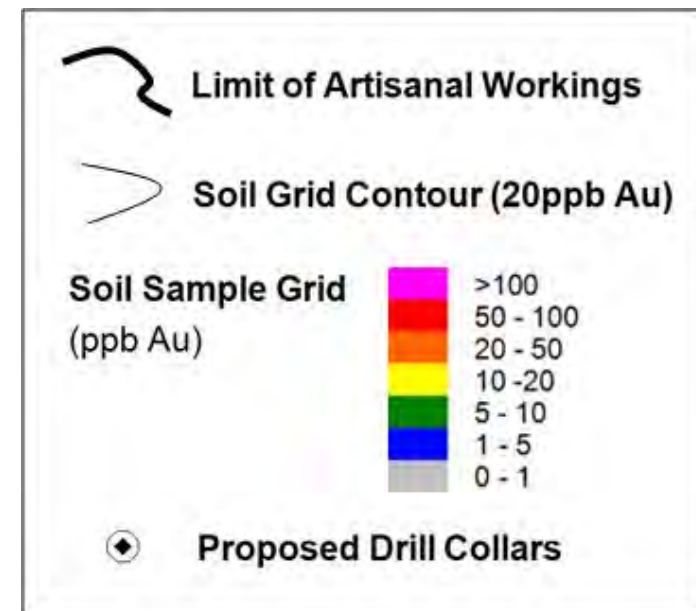
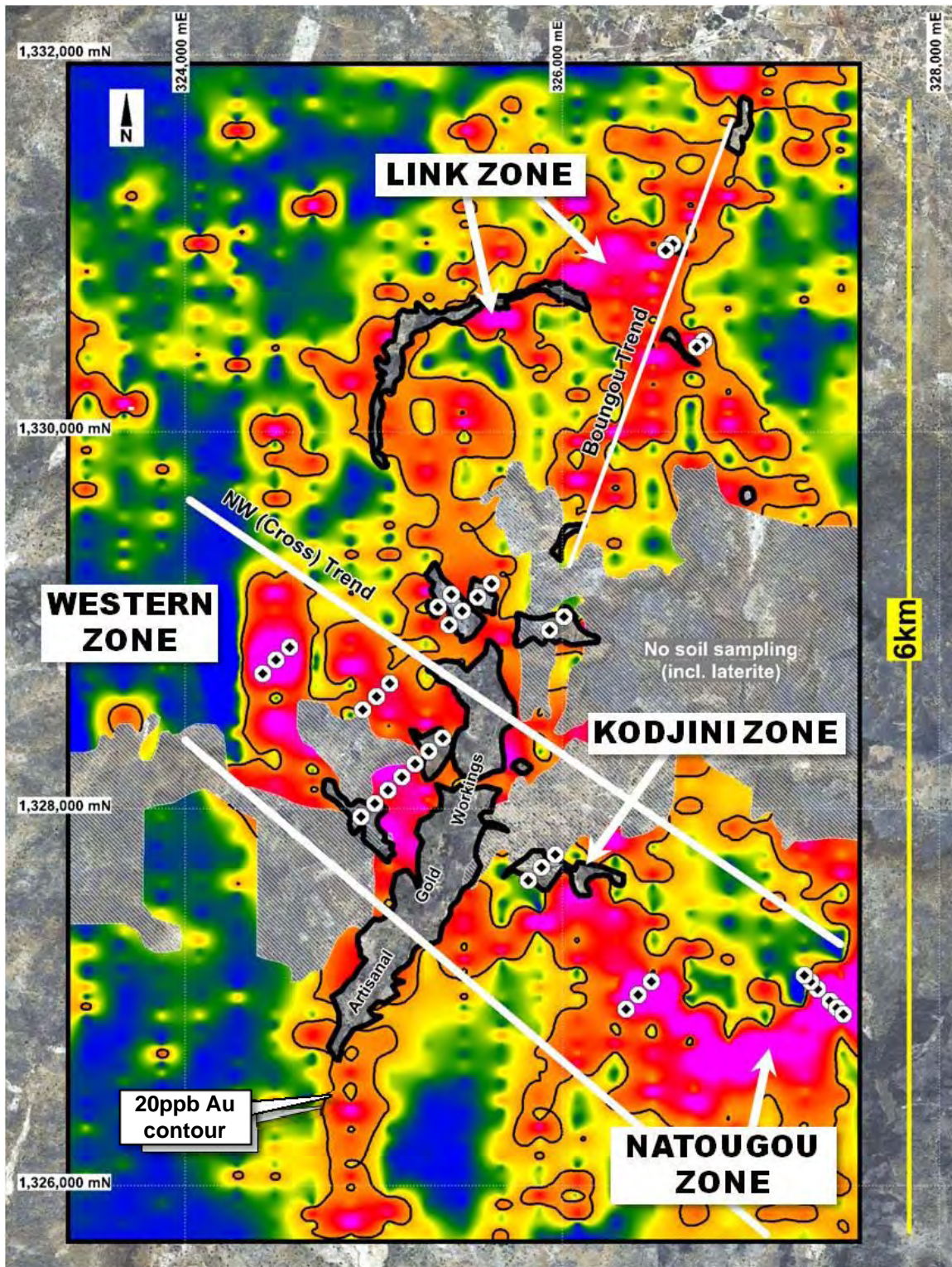




# Boungou Prospect

- extensive gold in soil anomalism
- 6.6km x up to 3.7km max. width (@20ppb Au)
- multiple gold trends
- anomalism open in multiple directions
- includes significant zones of +50ppb gold

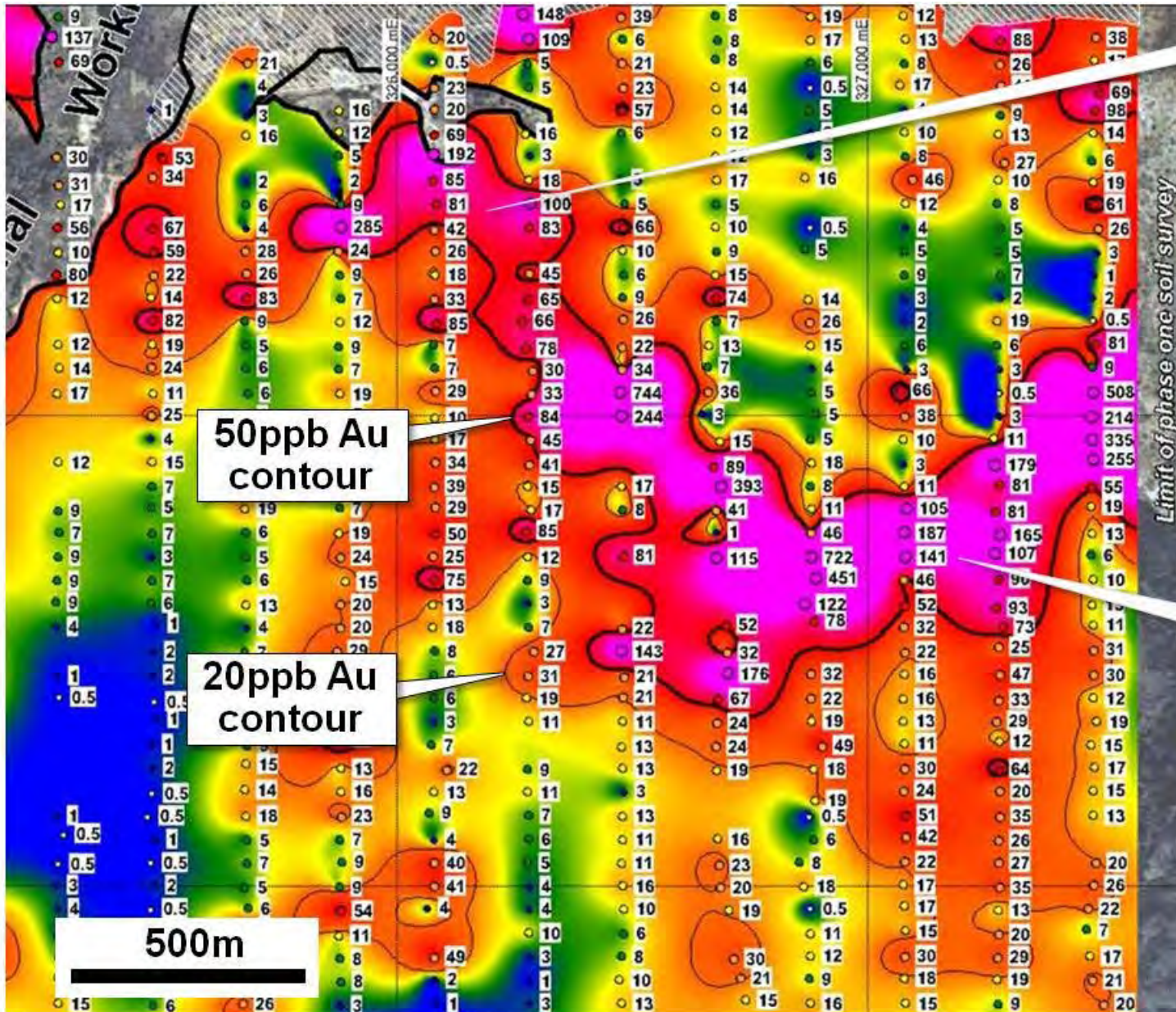
## Maiden RC drilling program in progress





# Boungou Prospect - Detail

( Large areas of +50ppb Au anomalism – Natougou Zone is “open” to east )



## Kodjini Zone

- ~1.2km strike x 0.5km max. width
- >100ppb Au (avg. grade)
- soil values up to 0.74g/t Au



Coarse free gold – Kodjini workings

## Natougou Zone

- ~1.3km strike x 0.5km max. width
- >150ppb Au (avg. grade)
- soil values up to 0.72g/t Au
- open to east (at limit of soil survey)



Natougou Zone – Soil profile



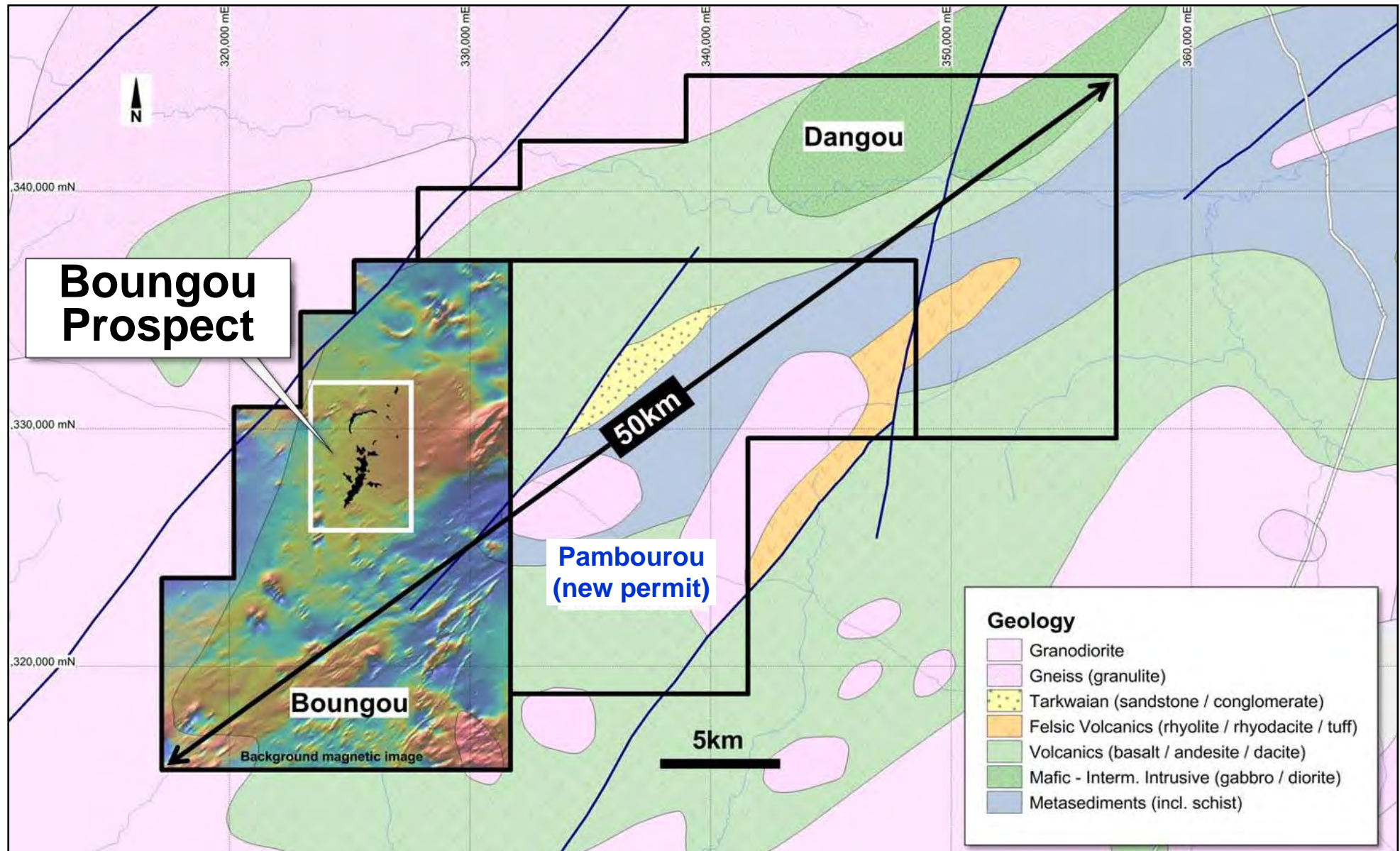


# Boungou – New Gold “Rush” (Feb. 2012)



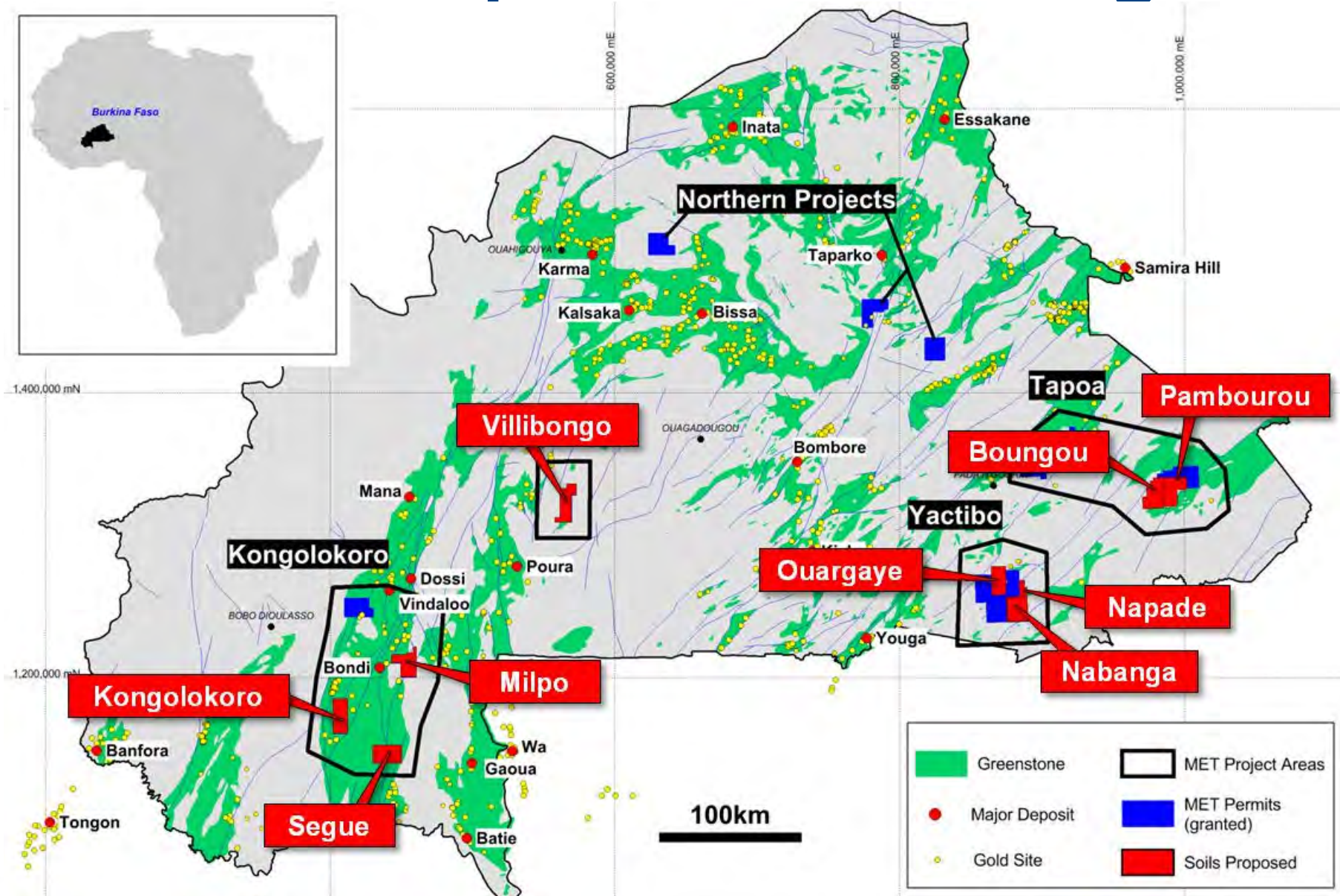


# Boungou - Less than 5% of Broader Project Area Tested to Date





# Active Regional Exploration Program to Ensure a Pipeline of New Targets





# Investment Summary

- Deep project portfolio in a world-class gold province
- Multiple prospects with demonstrated potential for major gold discoveries
- Key focus areas:

**Nabanga** - maiden resource estimate  
- “deep” diamond drilling  
- open pit scoping study

**Boungou** - first-pass drilling / discovery

**Bantou** - strike extension drilling  
- maiden resource estimate

... and a pipeline of new targets from regional exploration







# Mt Isa Metals

## Contact

**Peter Spiers**

**Managing Director**

**+61 (0) 7 3198 3040**

**+61 (0) 409 407 265**

**[pspiers@mtisametals.com.au](mailto:pspiers@mtisametals.com.au)**

**[www.mtisametals.com.au](http://www.mtisametals.com.au)**

