

## ASX Announcement

06 February 2012

### **OUTSTANDING NEAR SURFACE DRILL ASSAY RESULTS CONTINUE FROM NABANGA GOLD PROSPECT (includes 6.0m @ 48.48g/t Au from 74m in drill hole NARC173)**

#### **Highlights:**

- **Outstanding new assay results received from reverse circulation (RC) drilling at Nabanga Gold Project – Central Zone target.**
- **New high grade drill intersections include:**
  - **6m @ 4.77g/t Au from 30m (in NARC171) (incl. 2m @ 9.57g/t Au (from 30m))**
  - **6m @ 14.44g/t Au from 49m (in NARC172) (incl. 1m @ 67.50g/t Au (from 49m))**
  - **6m @ 48.48g/t Au from 74m (in NARC173) (incl. 4m @ 71.83g/t Au (from 74m))**
  - **5m @ 26.34g/t Au from 87m (in NARC174) (incl. 2m @ 63.35g/t Au (from 88m))**
  - **3m @ 9.70g/t Au from 86m (in NARC184) (incl. 1m @ 22.70g/t Au (from 88m))**
  - **7m @ 5.55g/t Au from 109m (in NARC185) (incl. 2m @ 14.37g/t Au (from 112m))**
- **A new near-surface high grade gold zone identified at the northern end of the Central Zone target adjacent to where the structure “rolls” into an offsetting cross fault. This area includes new and previously reported intersections of:**
  - **3m @ 24.62g/t from 59m (in NARC011) – *previously reported***
  - **4m @ 8.52g/t from 74m (in NARC035) – *previously reported***
  - **10m @ 17.70g/t Au from 51m (in NARC114) – *previously reported***
  - **6m @ 14.44g/t Au from 49m (in NARC172)**
  - **6m @ 48.48g/t Au from 74m (in NARC173)**
  - **5m @ 26.34g/t Au from 87m (in NARC174)**
- **Drilling ongoing at Nabanga with two RC rigs currently in operation.**

## New High Grade Assay Results in Central Zone Area

The Board of Mt Isa Metals Limited (MET) is pleased to advise that further outstanding high grade gold assay results have been received from RC drilling at the Nabanga Gold Project in south-east Burkina Faso.

The results are from the Central Zone area – one of three high grade gold zones with an aggregate strike length in excess of 2 kilometres currently being drill tested by MET in the Nabanga Project area (figure 1).

The new results include additional high grade near-surface drill intersections that further enhance the potential for open pit gold mine development in the Nabanga area.

The new drill assay results include:

- **6m @ 4.77g/t Au** from 30m (in NARC171)  
**(incl. 2m @ 9.57g/t Au** (from 30m)
- **6m @ 14.44g/t Au** from 49m (in NARC172)  
**(incl. 1m @ 67.50g/t Au** (from 49m)
- **6m @ 48.48g/t Au** from 74m (in NARC173)  
**(incl. 4m @ 71.83g/t Au** (from 74m)
- **5m @ 26.34g/t Au** from 87m (in NARC174)  
**(incl. 2m @ 63.35g/t Au** (from 88m)
- **3m @ 9.70g/t Au from 86m** (in NARC184)  
**(incl. 1m @ 22.70g/t Au** (from 88m)
- **7m @ 5.55g/t Au from 109m** (in NARC185)  
**(incl. 2m @ 14.37g/t Au** (from 112m)

A longitudinal section through the Central Zone area showing the recent drill hole intersections is provided at figure 2.

To date assay results have been received for 59 RC drill holes from within the Central Zone target area. **The average down hole drill intersection for all such holes is 4.4 metres @ 7.23 g/t Au.**

Schematic cross sections through the Central Zone area incorporating the new drilling results are included at figure 3.

It is apparent from the new drilling results that the grade of the Central Zone structure increases towards the northern end of the drill target area as the structure “rolls” (ie: dip flattens) into a cross fault (refer figure 1 and cross section 65 in figure 3). This increased grade and shallower dip is significant in that it presents an opportunity to define increased tonnages of exceptionally high grade mineralisation in close proximity to the surface.

The Nabanga structure has yet to be tested at depth (below 40 metres) on the north side of the cross fault.

Detailed data for the new drill holes in the Central Zone area are provided in table 1 (Nabanga main lode intersections) and table 2 (other intersections).

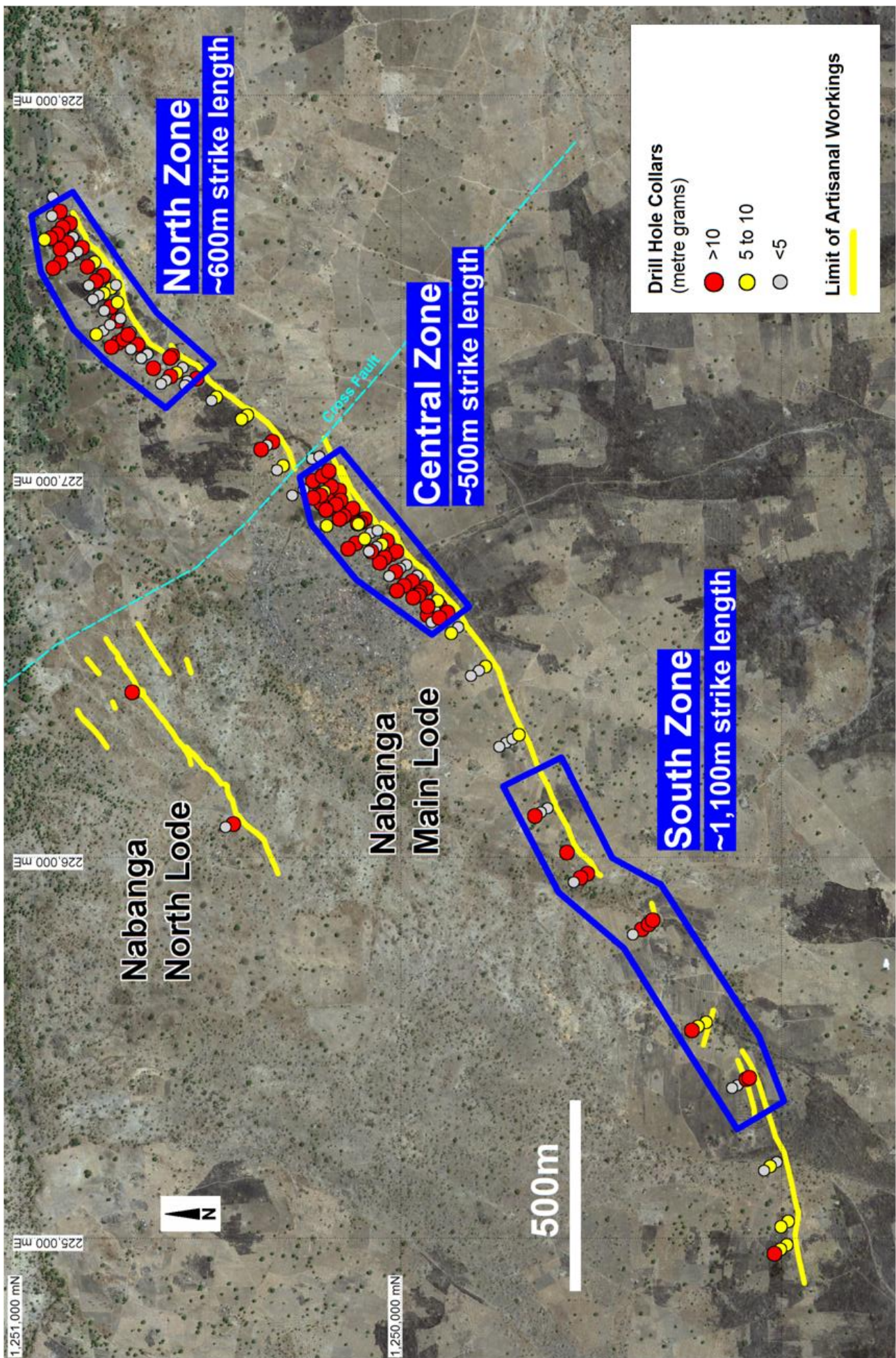


Figure 1 - Nabanga location diagram (showing location of high grade zones and drill hole collars).

# Central Zone - Longitudinal Section (viewed towards south east)

Section 65

Section 60

Section 55

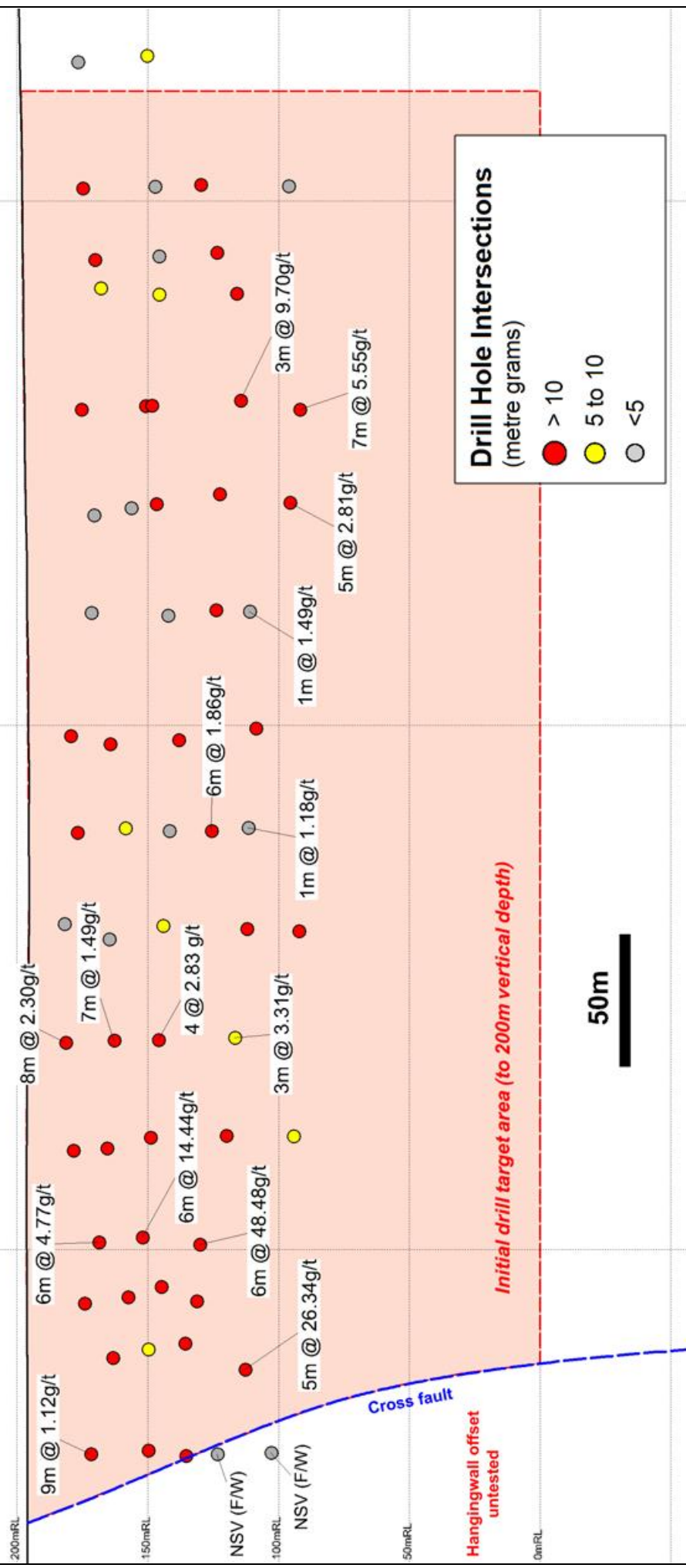


Figure 2 – Nabanga Central Zone long section (showing recent drill intersections).

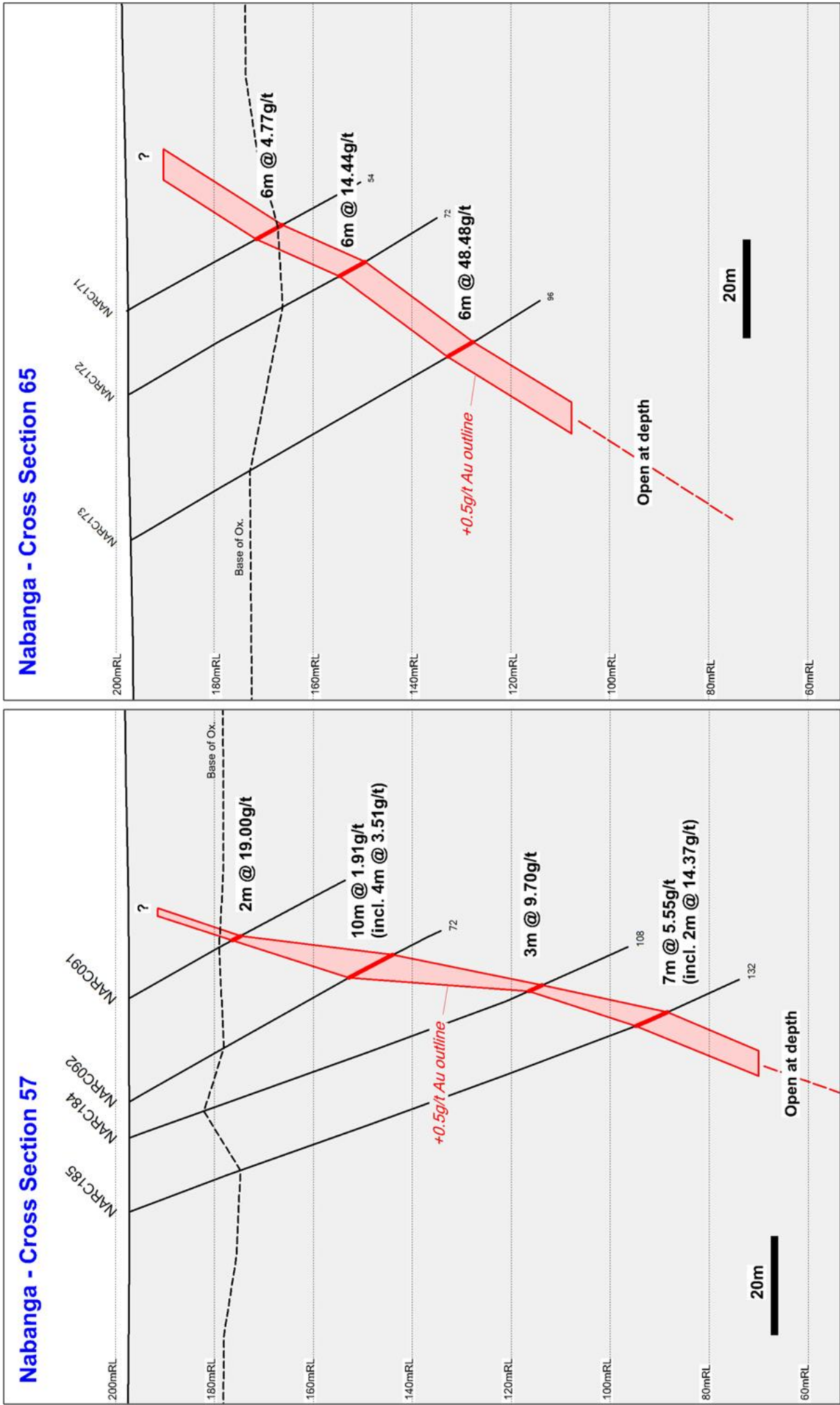


Figure 3 – Schematic cross sections showing high grade gold intersections open at depth below 110m (section 57) and 70m (section 65).

## **Additional Drilling Results Pending / Resource Estimation**

RC drilling is ongoing across the Nabanga discovery area with two rigs currently in operation.

The drilling is targeting high grade gold mineralisation in the North, Central and South target zones that has high potential to support open pit mine development.

The Company is aiming to complete the current drill program on the North, Central and South Zones by March 2012, and subject to receipt of assays and analysis, release a maiden resource estimate for these zones as soon as practicable thereafter.

In addition to the above RC drilling is progressively targeting additional areas that will extend the near surface “footprint” and potential of the Nabanga system including:

- drilling of the Nabanga North Lode (an 800m long gold vein with only three RC holes completed to date including 2m @ 8.32g/t Au (in NARC019) and 1m @ 11.65g/t Au (in NARC024)) (refer figure 1)
- drilling of strike extensions to the Nabanga system – mineralisation is open to both the north and south beyond the currently drill defined 3.6km strike length of gold mineralisation, and
- drilling of currently designated “lower grade” areas between the North, Central and South Zones where there is significant potential to define additional high grade shoots at shallow depth – the total strike length of these inadequately tested areas is 1.4km (figure 1).

---

### **For further information please contact:**

**Mr Peter Spiers**

Managing Director

Ph: (07) 3198 3040 or 0409 407 265

**Mr Peter Harding-Smith**

Company Secretary

Ph: (07) 3198 3040 or 0488 771 588

Email: [info@mtisametals.com.au](mailto:info@mtisametals.com.au)

Further information on Mt Isa Metals can be found on our website [www.mtisametals.com.au](http://www.mtisametals.com.au)

---

### **Competent Persons Statement**

The information in this report that relates to Exploration Results is based on information compiled by Mr Peter Spiers B.Sc (Hons) Geol., who is a Member of The Australasian Institute of Mining and Metallurgy. Mr Spiers is a full time employee of the company. Mr Spiers has sufficient experience which is relevant to the style of mineralisation and type of deposit under consideration and to the activity which he is undertaking to qualify as a Competent Person as defined in the 2004 Edition of the ‘Australasian Code for Reporting of Exploration Results, Mineral Resources and Ore Reserves’. Mr Spiers consents to the inclusion in the report of the matters based on his information in the form and context in which it appears.

Hole No.	East (WGS84)	North (WGS84)	RL (m)	TD (m)	Dip	Azi	From (m)	To (m)	Width (m)	Au (g/t)
NARC166	226,804	1,250,079	198	120	-60	145	80	86	6.0	1.86
NARC168	226,889	1,250,096	198	50	-60	145	15	23	8.0	2.30
NARC169	226,880	1,250,108	198	70	-60	145	37	44	7.0	1.49
NARC170	226,877	1,250,114	198	90	-68	145	54	58	4.0	2.83
NARC171	226,938	1,250,159	198	54	-60	145	30	36	6.0	4.77
							incl. 30	32	2.0	9.57
NARC172	226,927	1,250,172	197	72	-60	145	49	55	6.0	14.44
							incl. 49	50	1.0	67.50
NARC173	226,913	1,250,198	197	96	-60	145	74	80	6.0	48.48
							incl. 74	78	4.0	71.83
NARC174	226,944	1,250,232	197	144	-70	145	87	92	5.0	26.34
							incl. 88	90	2.0	63.35
NARC177	227,015	1,250,190	198	65	-60	145	23	32	9.0	1.12
NARC178	226,966	1,250,256	196	126	-60	145	NSV (in cross fault)			
NARC179	226,951	1,250,285	196	150	-58	145	NSV (in cross fault)			
NARC180	226,738	1,250,030	197	135	-60	145	101	102	1.0	1.49
NARC182	226,701	1,250,012	197	138	-60	145	115	120	5.0	2.81
NARC184	226,689	1,249,955	197	108	-70	145	86	89	3.0	9.70
							incl. 88	89	1.0	22.70
NARC185	226,683	1,249,969	197	132	-70	145	109	116	7.0	5.55
							incl.112	114	2.0	14.37
NARC186	226,803	1,250,084	197	144	-65	145	94	95	1.0	1.18
NARC189	226,876	1,250,112	198	114	-82	145	80	83	3.0	3.31

**Table 1 – Nabanga Drill Results – Main Lode Intersections (0.5g/t Au cut-off grade).**

Hole No.	East (WGS84)	North (WGS84)	RL (m)	TD (m)	Dip	Azi	From (m)	To (m)	Width (m)	Au (g/t)
NARC168	226,889	1,250,096	198	50	-60	145	0	4	4.0	1.99
NARC169	226,880	1,250,108	198	70	-60	145	0	2	2.0	1.39
NARC170	226,877	1,250,114	198	90	-68	145	0	1	1.0	0.50
NARC171	226,938	1,250,159	198	54	-60	145	0	1	1.0	1.27
NARC172	226,927	1,250,172	197	72	-60	145	0	2	2.0	0.92
NARC173	226,913	1,250,198	197	96	-60	145	0	2	2.0	1.67
NARC179	226,951	1,250,285	196	150	-58	145	0	1	1.0	1.47
NARC184	226,689	1,249,955	197	108	-70	145	96	97	1.0	0.78
NARC186	226,803	1,250,084	197	144	-65	145	87	88	1.0	1.12
NARC189	226,876	1,250,112	198	114	-82	145	0	1	1.0	1.03

**Table 2 – Nabanga Drill Results – Other Intersections (0.5g/t Au cut-off grade).**