



**ORBIS**GOLD

# Mines & Money Conference

London  
December 2012



# Important Information

## Disclaimer

This presentation may contain certain statements and projections provided by or on behalf of Orbis Gold Limited (Orbis) with respect to the anticipated future undertakings. These forward-looking statements reflect various assumptions by or on behalf of Orbis. Accordingly, these statements are subject to significant business, economic and competitive uncertainties and contingencies associated with exploration and/or mining which may be beyond the control of Orbis which could cause actual results or trends to differ materially, including but not limited to price fluctuations, exploration results, reserve and resource estimation, environmental risks, physical risks, legislative and regulatory changes, political risks, project delay or advancement, ability to meet funding requirements, factors relating to property title, native title and aboriginal heritage issues, dependence on key personnel, share price volatility, approvals and cost estimates. Accordingly, there can be no assurance that such statements and projections will be realised. Orbis makes no representations as to the accuracy or completeness of any such statement of projections or that any forecasts will be achieved.

Additionally, Orbis makes no representation or warranty, express or implied, in relation to, and no responsibility or liability is or will be accepted by Orbis or by any of their respective officers, directors, shareholders, partners, employees, or advisers as to or in relation to the accuracy or completeness of the information, statements, opinions or matters (express or implied) arising out of, contained in or derived from this presentation or any omission from this presentation or of any other written or oral information or opinions provided now or in the future to any interested party or its advisers. In furnishing this presentation, Orbis undertakes no obligation to provide any additional or updated information whether as a result of new information, future events or results or otherwise.

Nothing in this material should be construed as either an offer to sell or a solicitation of an offer to buy or sell securities. It does not include all available information and should not be used in isolation as a basis to invest in Orbis Gold Limited.

## Competent Persons Statement

The information in this report that relates to Exploration Results is based on information compiled by Mr Peter Spiers B.Sc (Hons) Geol., who is a Member of The Australasian Institute of Mining and Metallurgy. Mr Spiers is a full time employee of the company.

Mr Spiers has sufficient experience which is relevant to the styles of mineralisation and types of deposits under consideration and to the activity which he is undertaking to qualify as a Competent Person as defined in the 2004 Edition of the 'Australasian Code for Reporting of Exploration Results, Mineral Resources and Ore Reserves'. Mr Spiers consents to the inclusion in the report of the matters based on his information in the form and context in which it appears.

The information in this announcement that relates to Mineral Resources for the Nabanga Gold Project has been compiled and prepared by Mr Phillip Micale (Consultant), under the guidance of Dr Simon Dominy who holds the position of Executive Consultant with Snowden Mining Industry Consultants Pty Ltd.

Mr Micale is a qualified geologist with 8 years experience in geology and Resource estimation, and is a member of the AusIMM. Dr Dominy is a qualified mining geologist and engineer with over 25 years experience in geology and resource/reserve evaluation. He is a Fellow of the Australasian Institute of Mining and Metallurgy (AusIMM) and certified by that organisation as a Chartered Professional Geologist (CP Geo). He has sufficient experience to qualify as a Competent Person under the 2004 edition of the Australasian Code for Reporting of Exploration Results, Mineral Resources and Ore Reserves ("The JORC Code, 2004 Edition"). Dr Dominy consents to the inclusion in the report of the matters based on his information in the form and context in which it appears.

## Drill Hole Intersections

Drill hole intersections reported in this presentation represent down hole lengths and do not equate to true widths. The conversion from down hole lengths to true widths will be variable from hole to hole due to variability in the dip of the targeted structures and variability in the inclination (dip) of individual drill holes.



# Orbis Gold - Introduction

- ASX-listed resource company focussed on gold exploration / development
- 4,000km<sup>2</sup> permits in world-class Birimian Gold Province (West Africa)
- Exploration commenced late 2010 (Burkina Faso)
- Three gold discoveries to date:
  - Nabanga
  - Bantou
  - Bounbou
- **Nabanga Inferred Mineral Resource**
  - **3.2Mt @ 6.5g/t Au for 660,000ozs \***
- Significant exploration potential

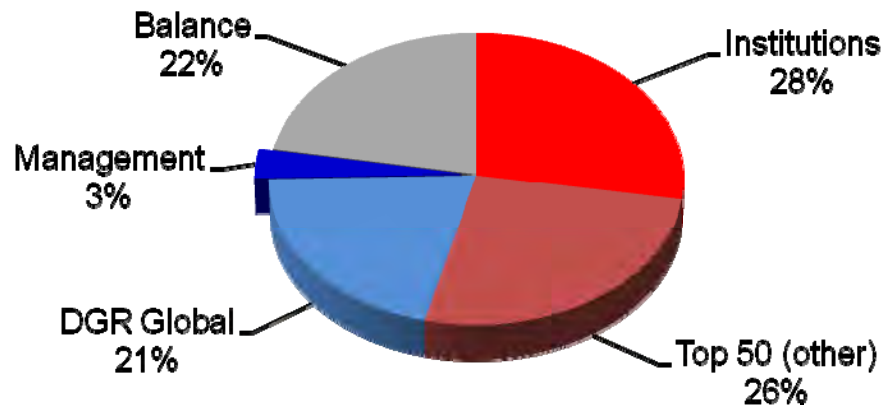


# Shareholder / Financial Overview

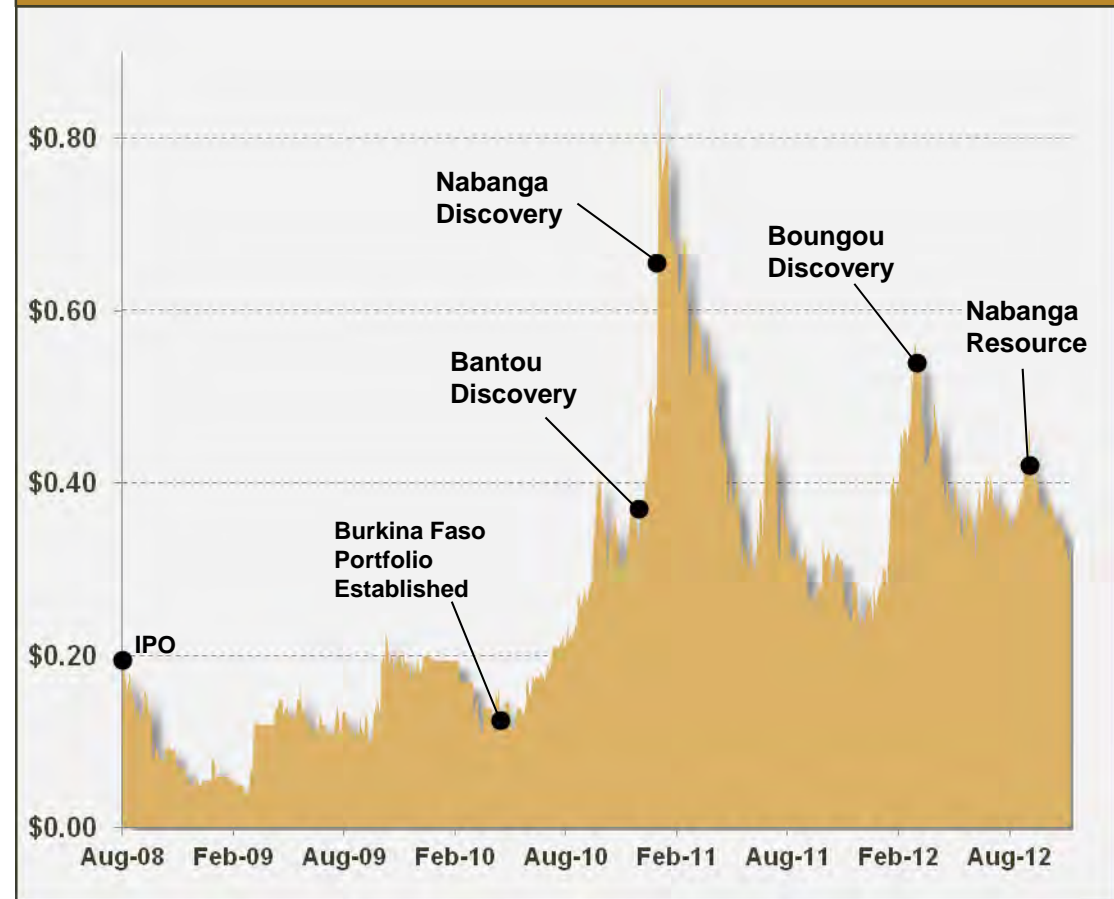
## Capital Structure

ASX Code:	<b>OBS</b>
Shares (ordinary):	217.0m
Options (unlisted):	11.0m
Share Price:	33.0 cents <sup>(1)</sup>
Market Capitalisation:	A\$72m
Cash:	A\$18.5m <sup>(2)</sup>

## Share Register <sup>(2)</sup>



## Share Price (A\$)



(1) As at 30<sup>th</sup> November 2012.

(2) As at 30<sup>th</sup> November 2012 (unaudited).



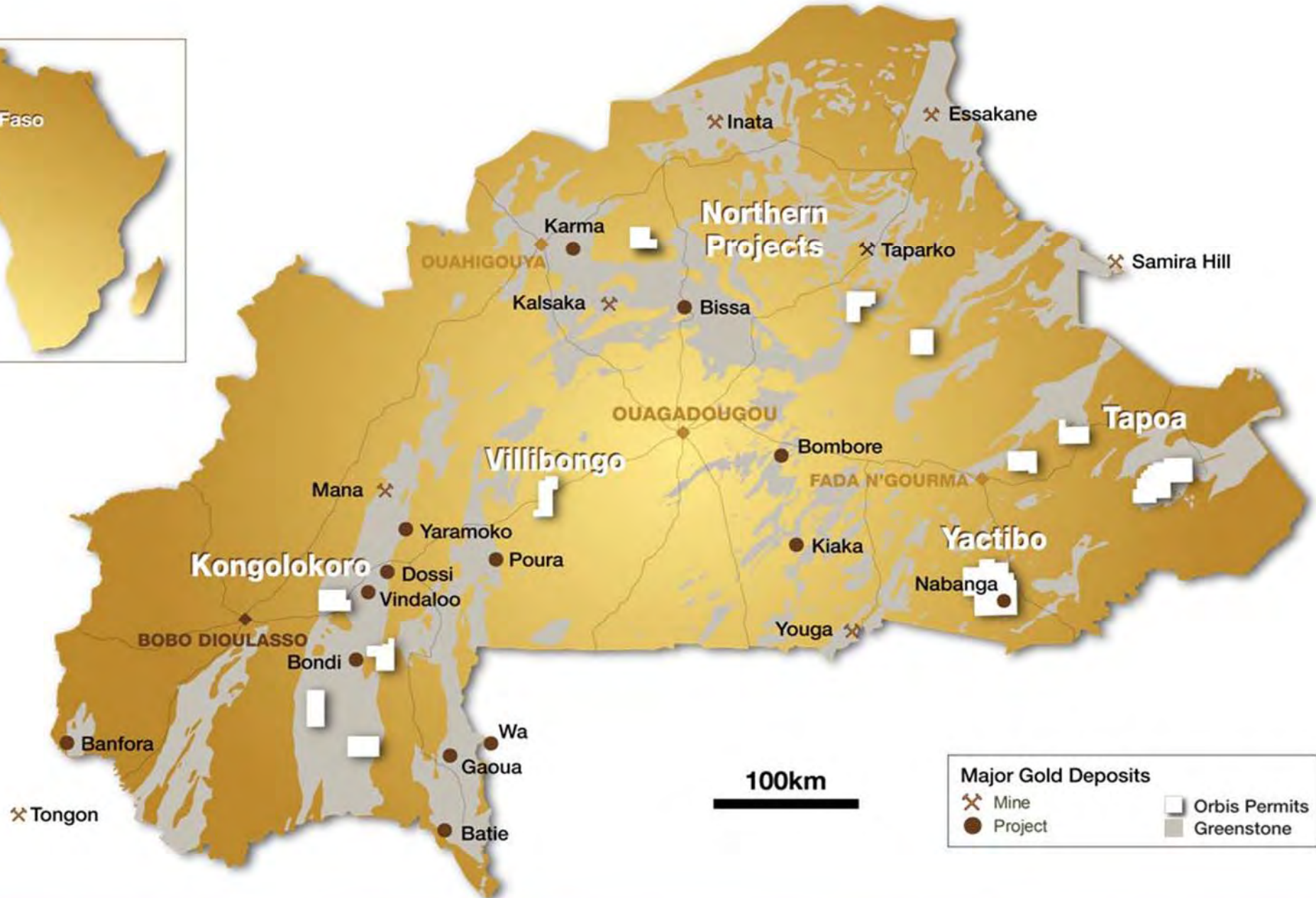
# Strategic Land Position / World-Class Gold Province

( The Birimian Gold Province is host to more than fifty +1Moz gold deposits )



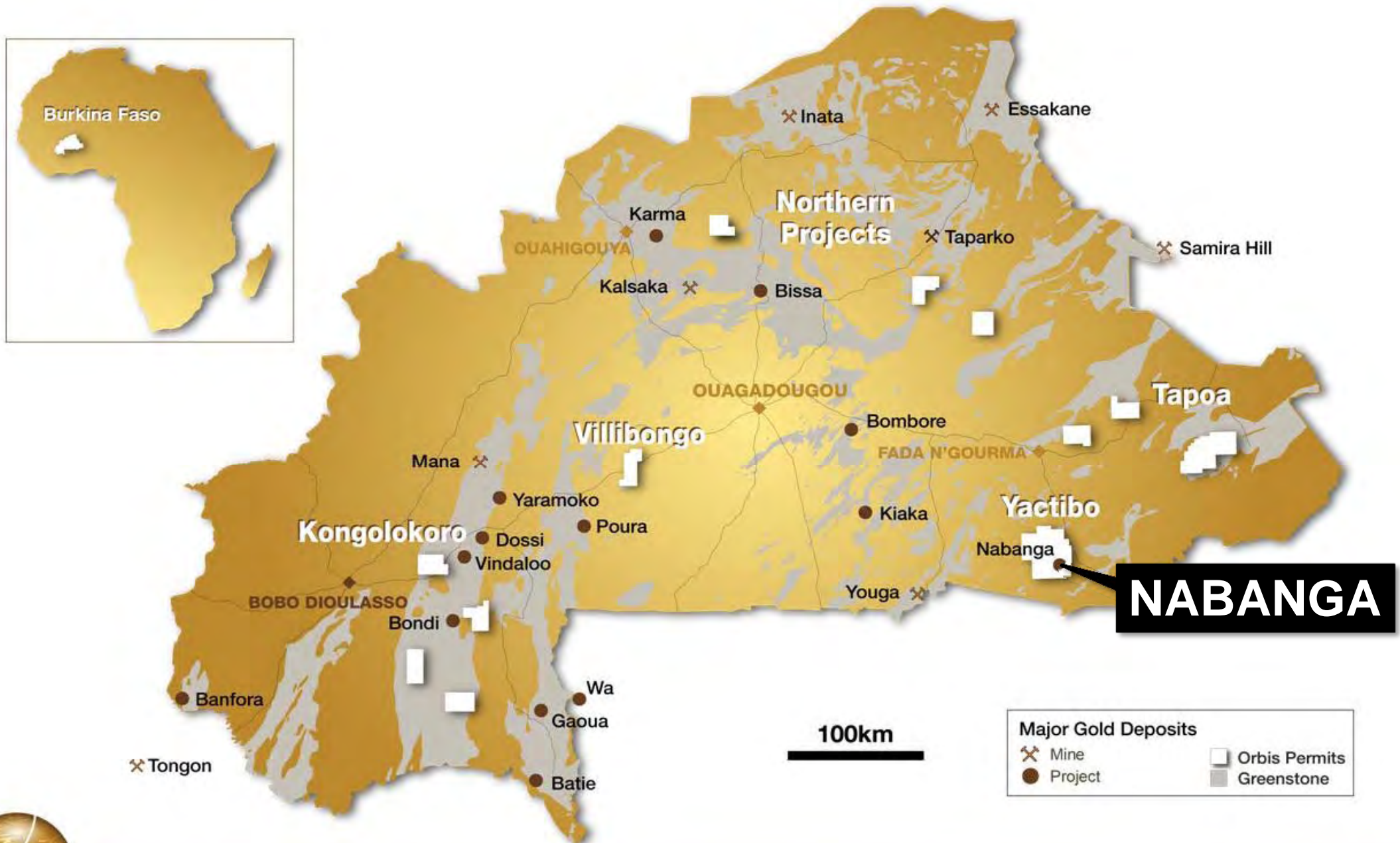
# Orbis Exploration Permits - Burkina Faso

( ~4,000km<sup>2</sup> permit area\* – Multiple advanced gold prospects)





# Nabanga – High Grade Gold Discovery

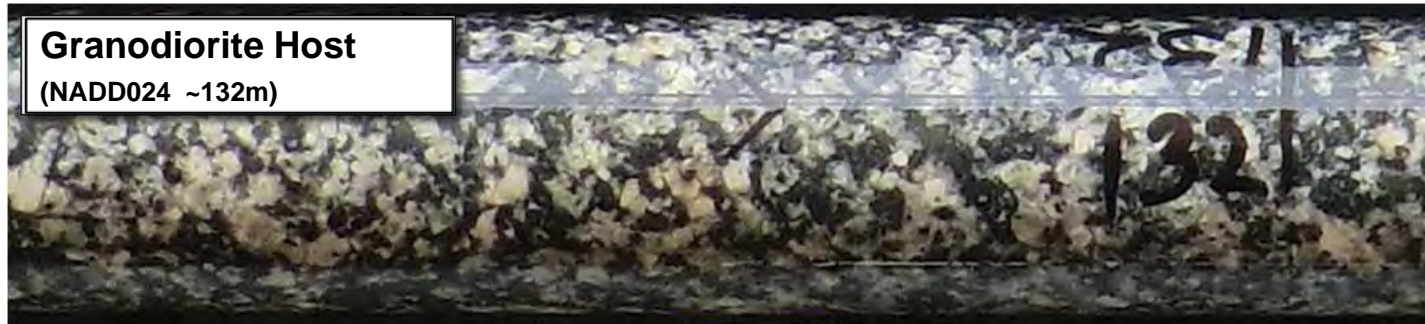


**NABANGA**

\* Permits held under 3 year option agreements to purchase 100% interest, 2 permits held 100% by Orbis.

# Nabanga – A High Grade Gold System

( “Intrusion-related” gold deposit – granodiorite host and Au-Ag-Te +/- Bi assemblage )



**Granodiorite Host**  
(NADD024 ~132m)



**Altered Granodiorite**  
1.20g/t Au (NADD024 ~242m)



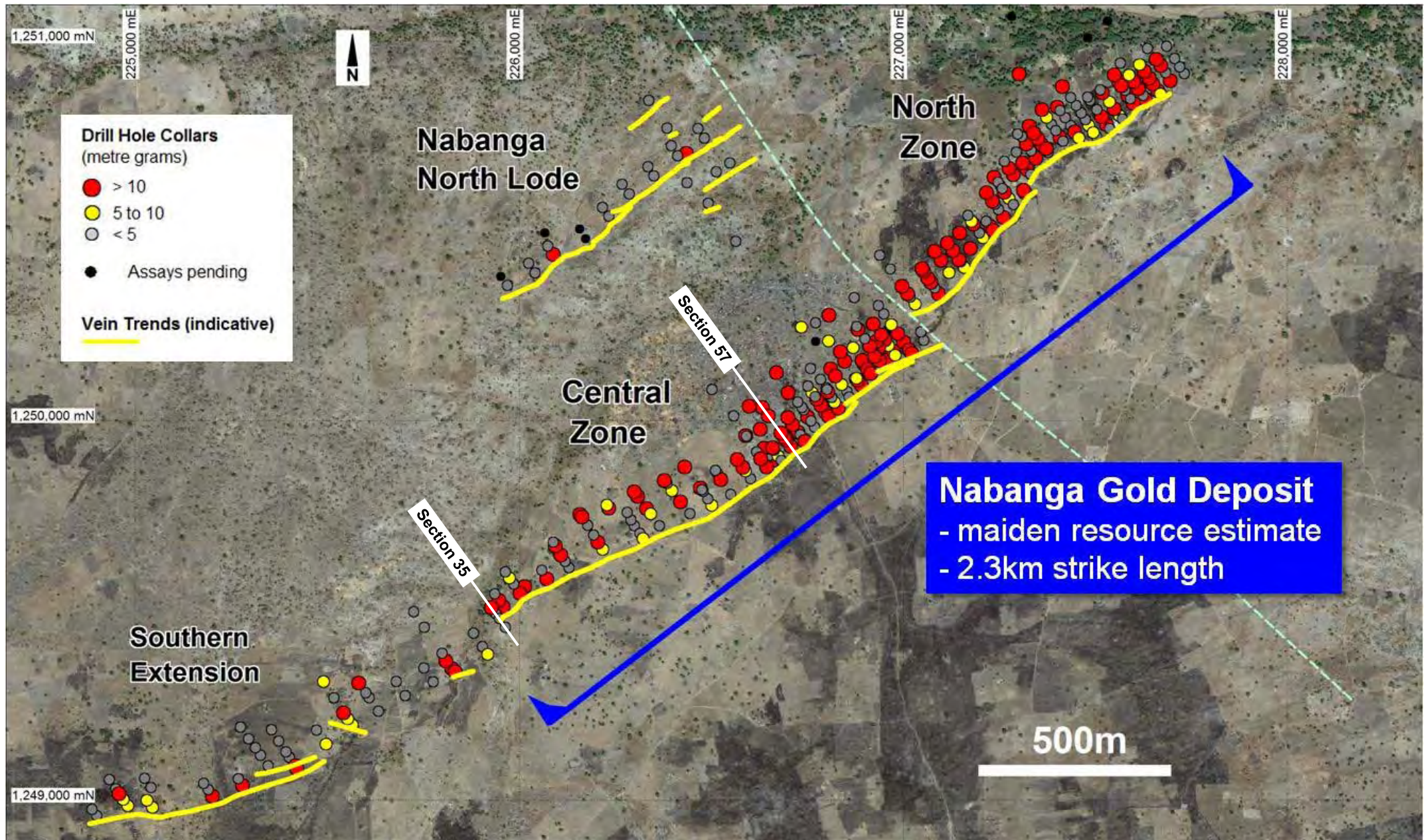
**Quartz Vein**  
9.04g/t Au (NADD024 ~243m)

Hole ID	Intersections*	From (m)
NARC091	2m @ 19.00g/t	24
NARC100	3m @ 20.49g/t	72
NARC114	10m @ 17.70g/t	51
NARC135	5m @ 22.99g/t	74
NARC139	3m @ 20.77g/t	33
NARC151	3m @ 20.12g/t	110
NARC172	6m @ 14.44g/t	49
NARC173	6m @ 48.48g/t	74
NARC174	5m @ 26.34g/t	87
NARC190	3m @ 23.46g/t	105
NARC199	4m @ 17.25g/t	28
NARC216	8m @ 12.68g/t	148
NARC218	5m @ 15.62g/t	112
NARC254	6m @ 11.21g/t	145
NARC293	7m @ 17.29g/t	169
NARC300	11m @ 10.52g/t	114
NARC319	3m @ 22.65g/t	78
NARC323	8m @ 18.13g/t	116
NARC327	3m @ 34.75g/t	172
NARC330	10m @ 32.90g/t	167

\* Selection of high grade RC drill intersections reported above an 0.5g/t Au cut-off grade. Lengths are down hole lengths.



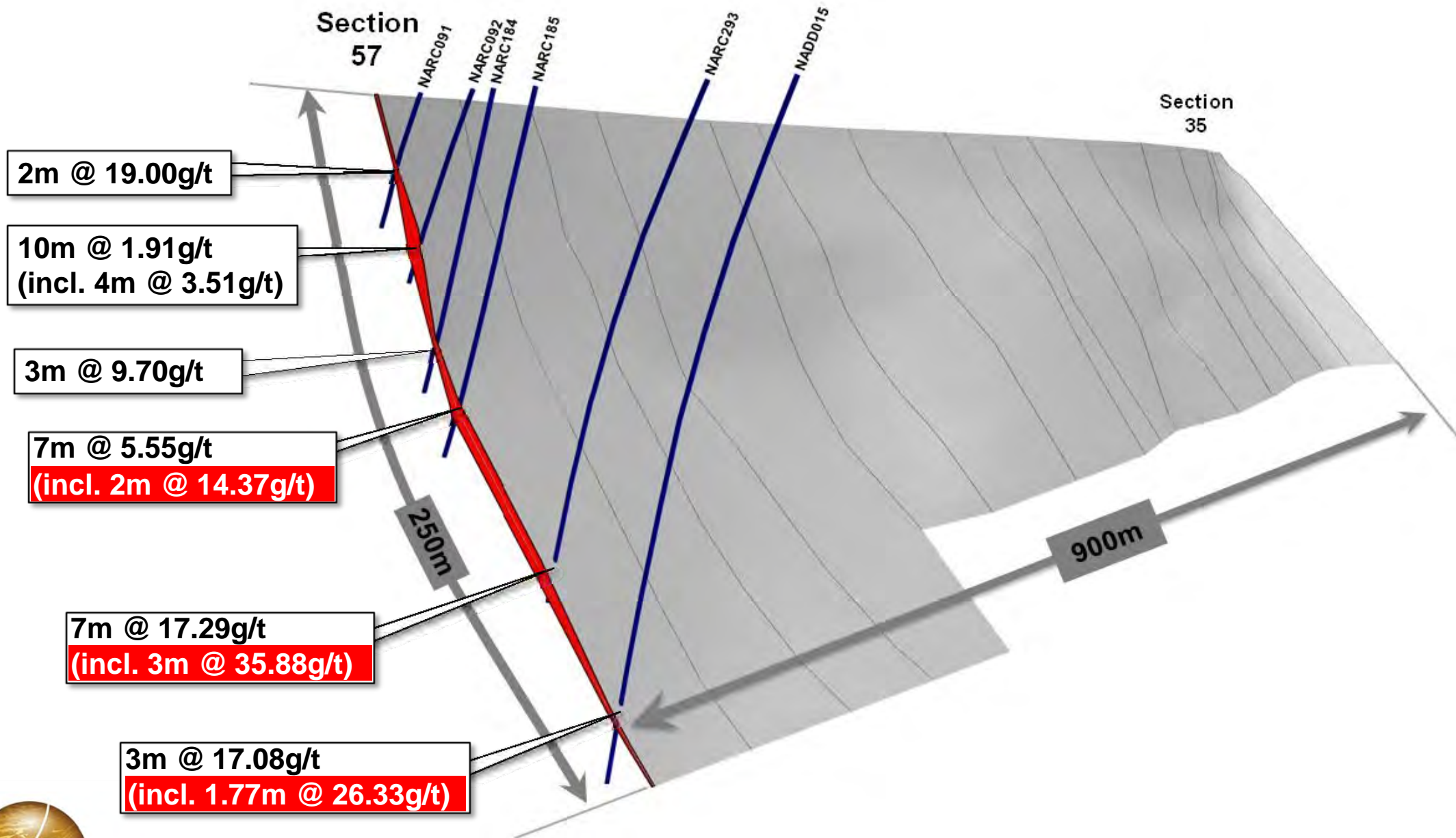
# Nabanga Gold Deposit – Drill Status Plan





# Nabanga – 3D Longitudinal Section

( View looking to the south-west from Central Zone area showing mid-point structure surface )





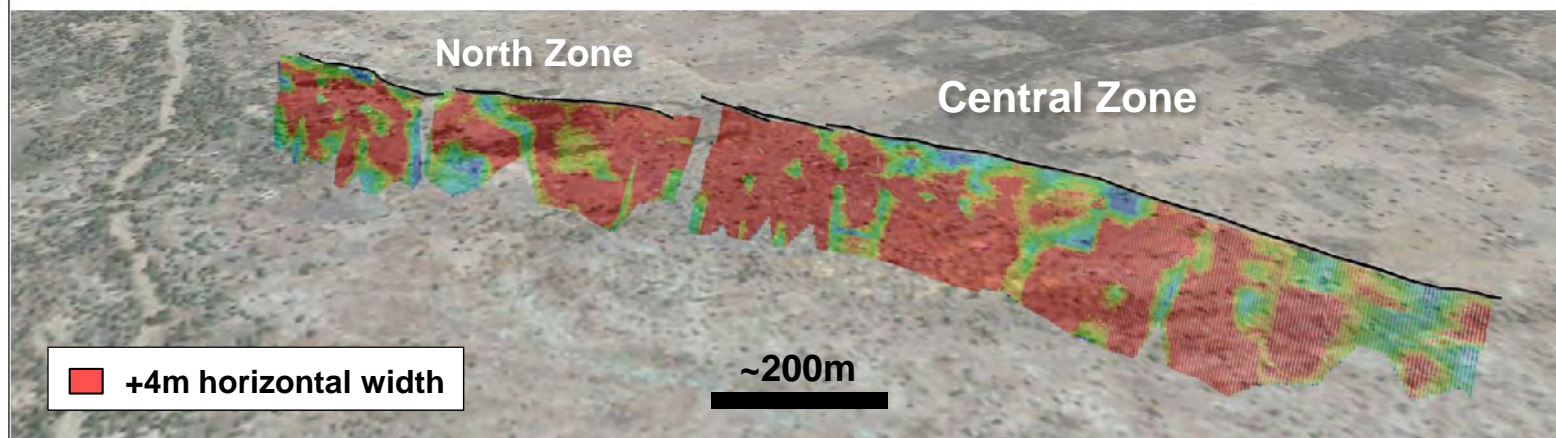
# Maiden Resource Estimate – Sept. 2012

## Nabanga – Inferred Mineral Resource\*

Cut-off Grade	Tonnes	Grade	Ounces
0.0g/t Au	4.8Mt	4.4g/t Au	679,000ozs
<b>0.5g/t Au</b>	<b>3.2Mt</b>	<b>6.5g/t Au</b>	<b>660,000ozs</b>
2.0g/t Au	2.3Mt	8.5g/t Au	640,000ozs
<b>5.0g/t Au</b>	<b>1.8Mt</b>	<b>10.0g/t Au</b>	<b>573,000ozs</b>

High proportion of ounces retained across range of cut-off grades

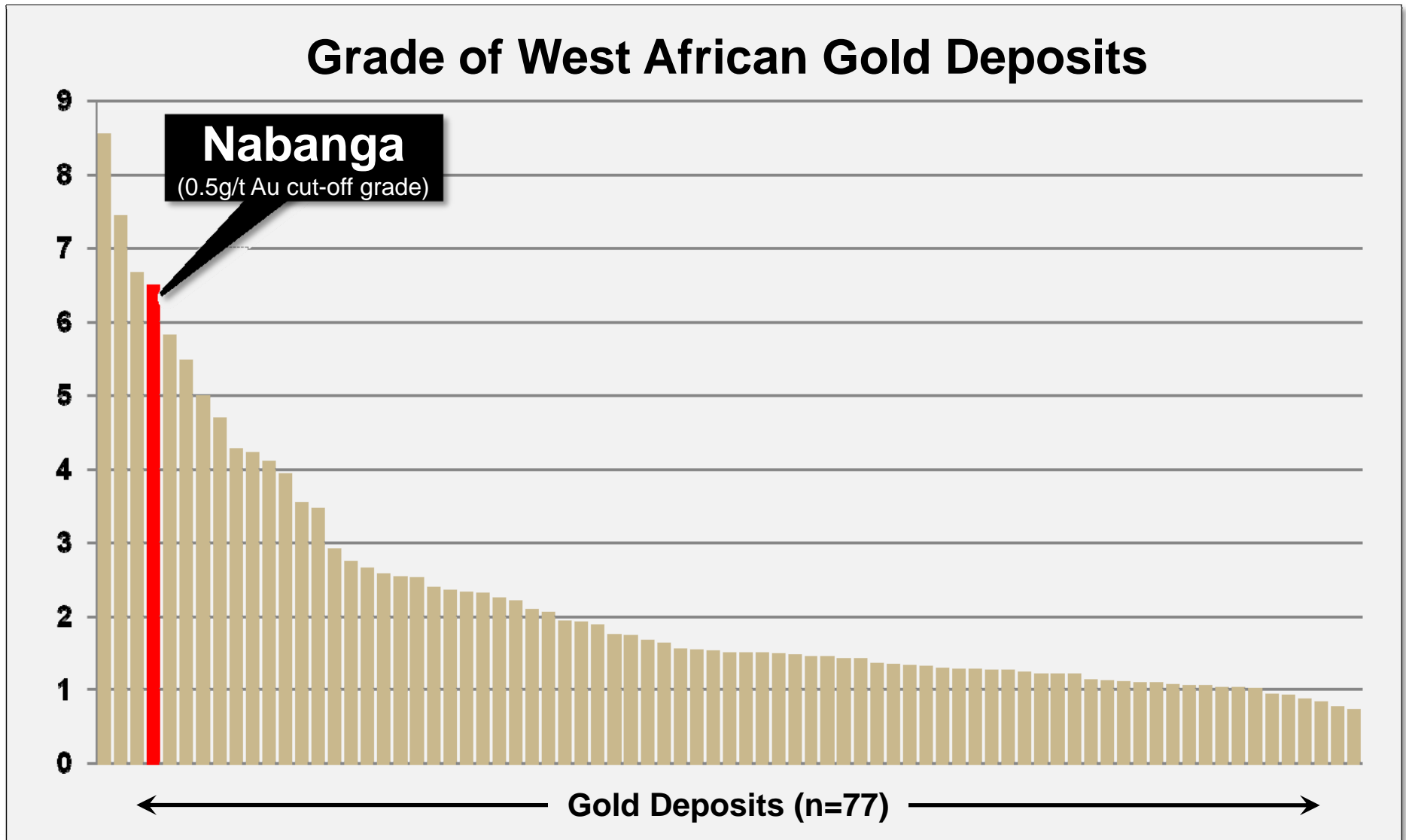
## Nabanga Thickness Contour (viewed towards south-east)



Reported resource is limited to a maximum 200m vertical depth

# Grade of West African Gold Deposits

( The Nabanga deposit lies at the upper end of the grade spectrum )





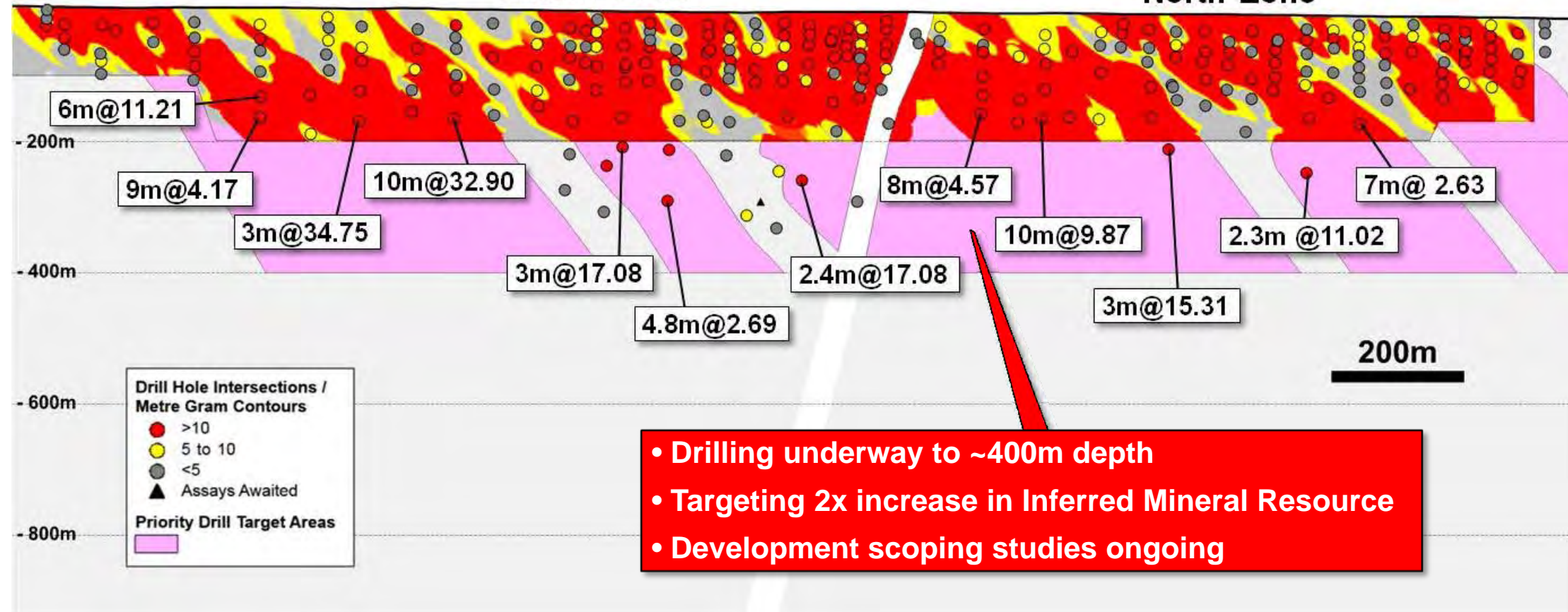
# Nabanga – Drilling In Progress

( Significant high grade gold intersections at the base of current drilling – open at depth )

← 2.3km Strike Length →

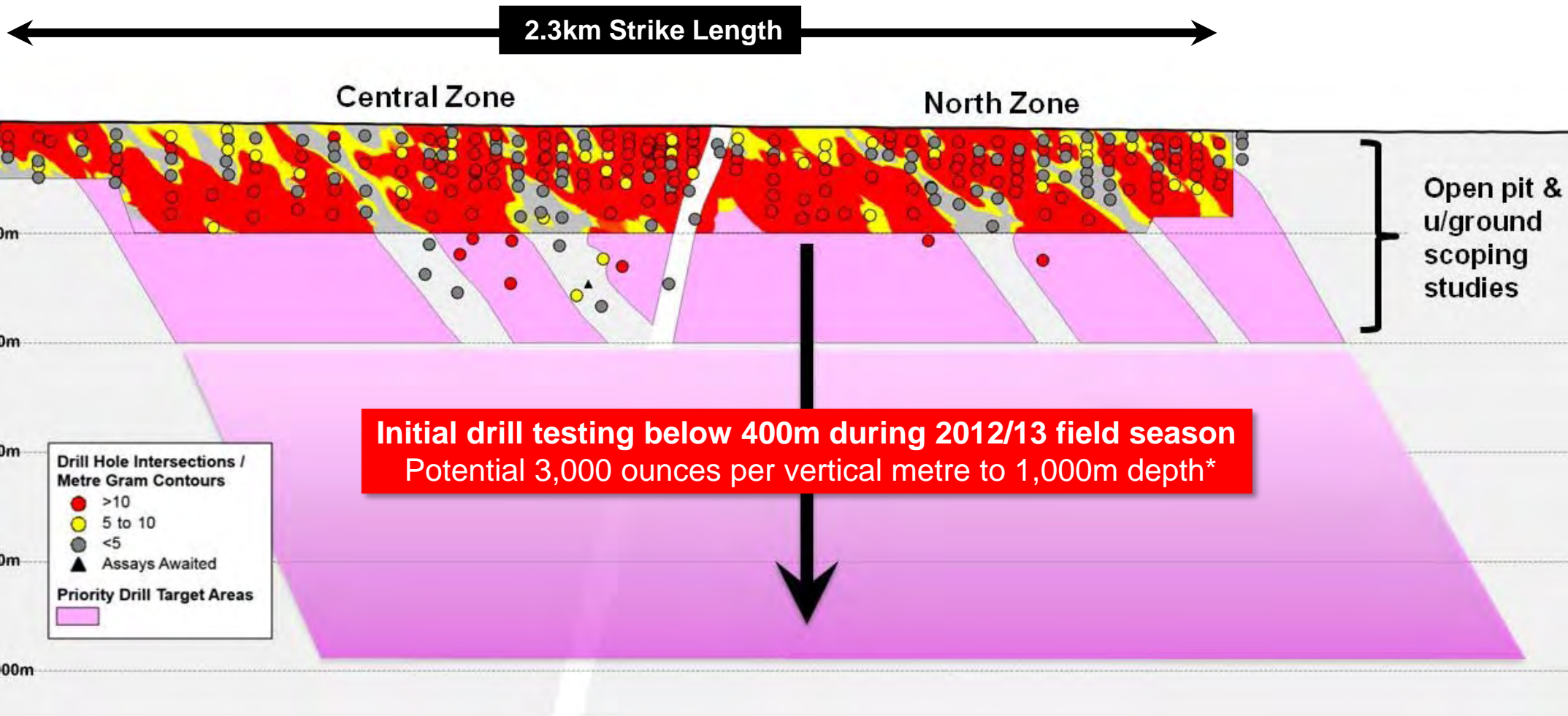
Central Zone

North Zone



# Nabanga – Significant Depth Potential

( Intrusion-related deposits can extend to substantial depths – potential >3,000 ounces gold per vertical metre )

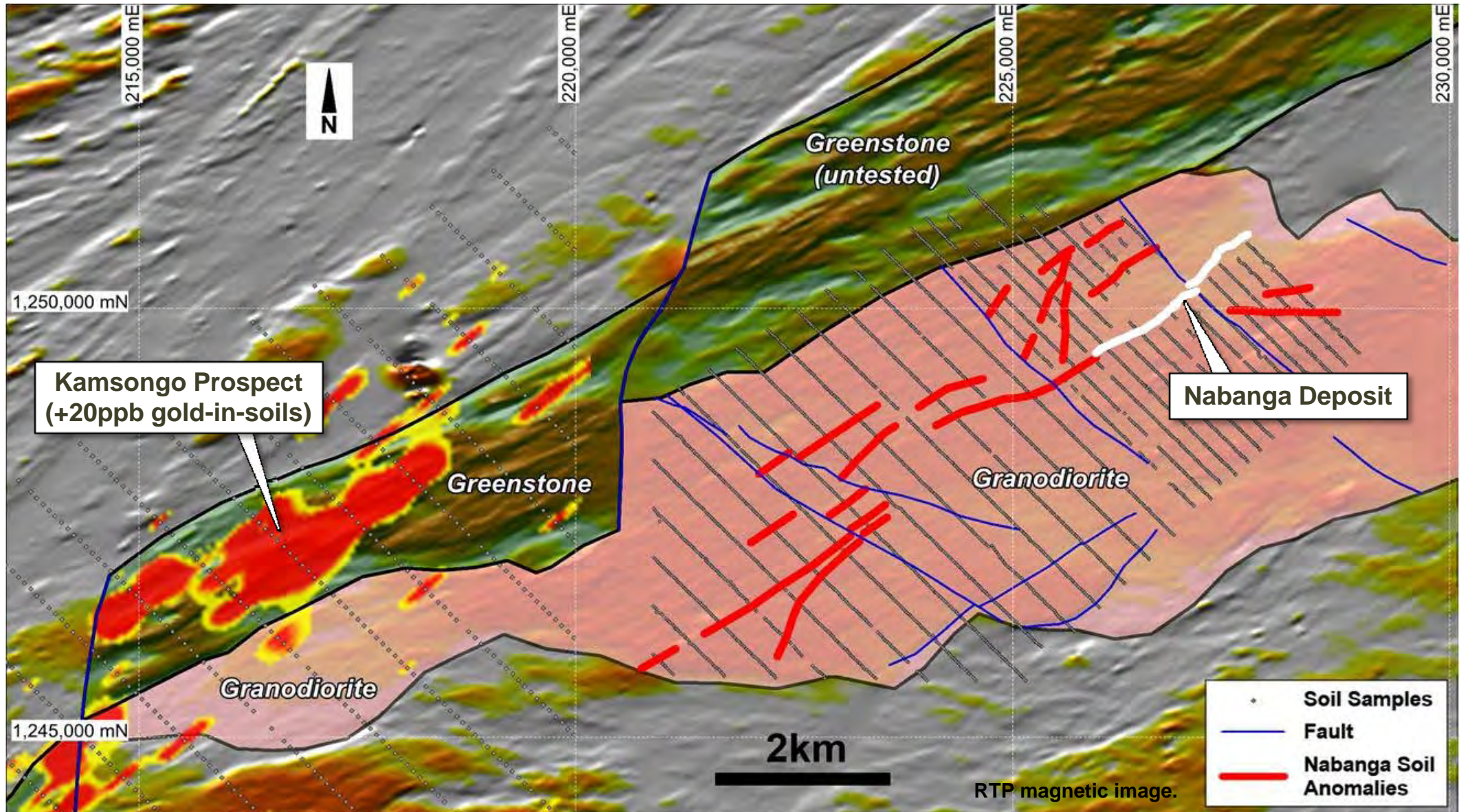


\* Inferred Mineral Resource to 200m vertical depth comprises 1.8Mt @ 10.0g/t Au for 573,000 ounces of contained gold (reported above a 5.0g/t Au lower cut-off grade and 1.5m minimum horizontal width). This equates to an approximate 3,000 contained ounces per vertical metre (maiden resource estimate defined over a 190m vertical extent due to exclusion of top 10m from surface to account for depletion due to shallow artisanal gold workings).



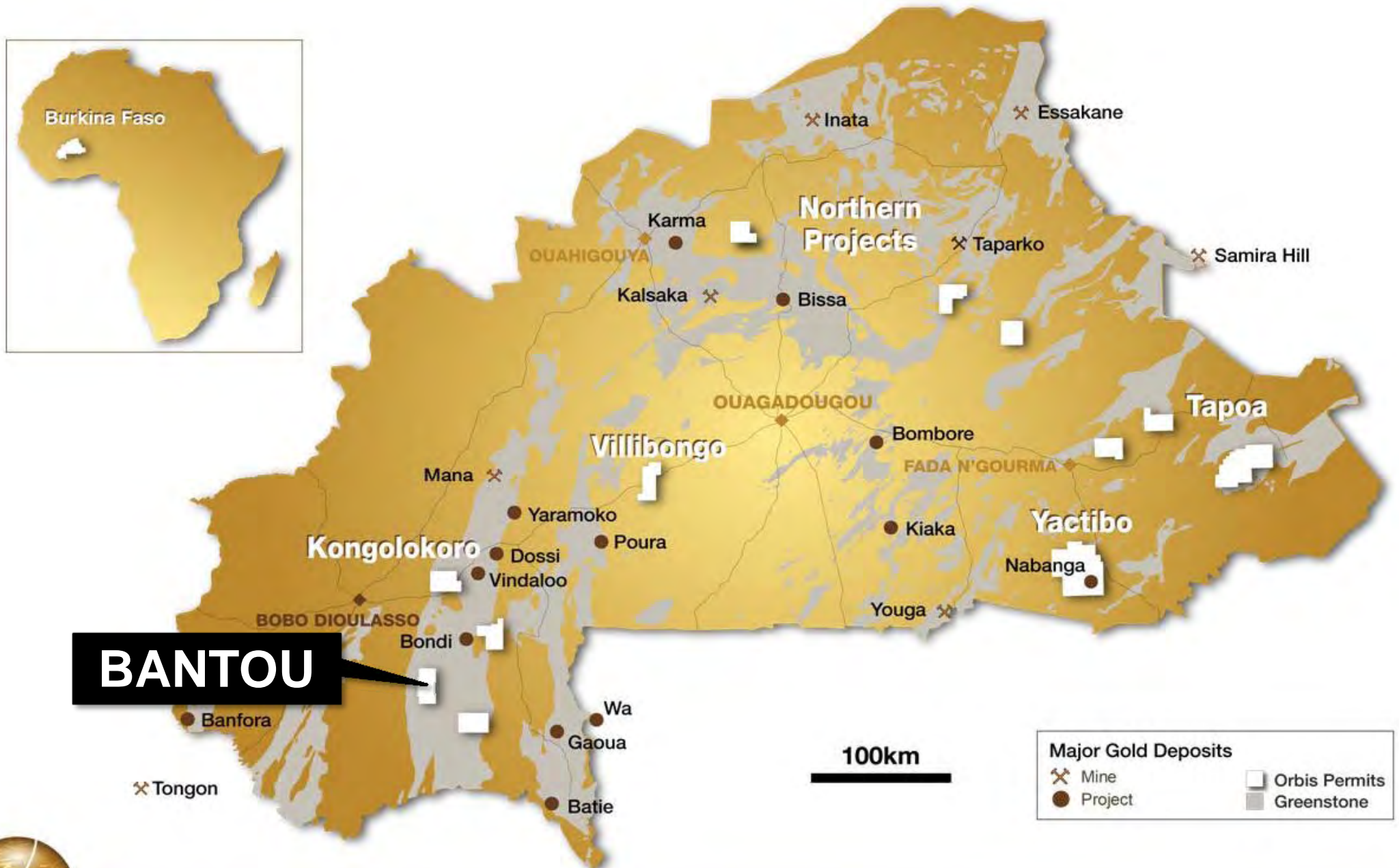
# Nabanga – Camp-scale Opportunities

( Gold-in-soil anomalies to be tested / additional soil programs proposed for 2012/13 field season )





# Bantou – Our Second Gold Discovery





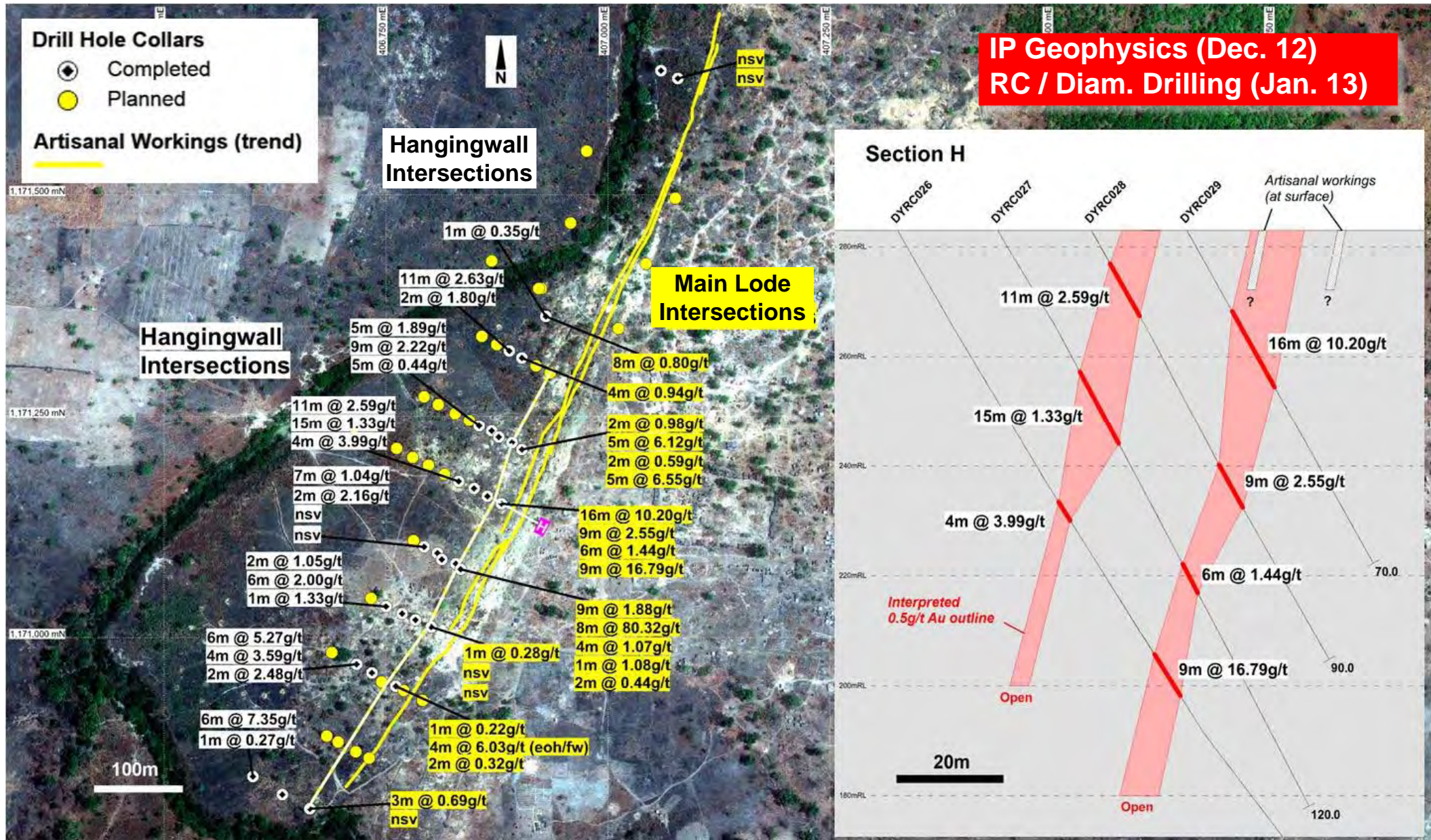
# Bantou – Multiple Quartz Lodes Over a 1km Strike Length





# Bantou – High Grade Intersections from Surface

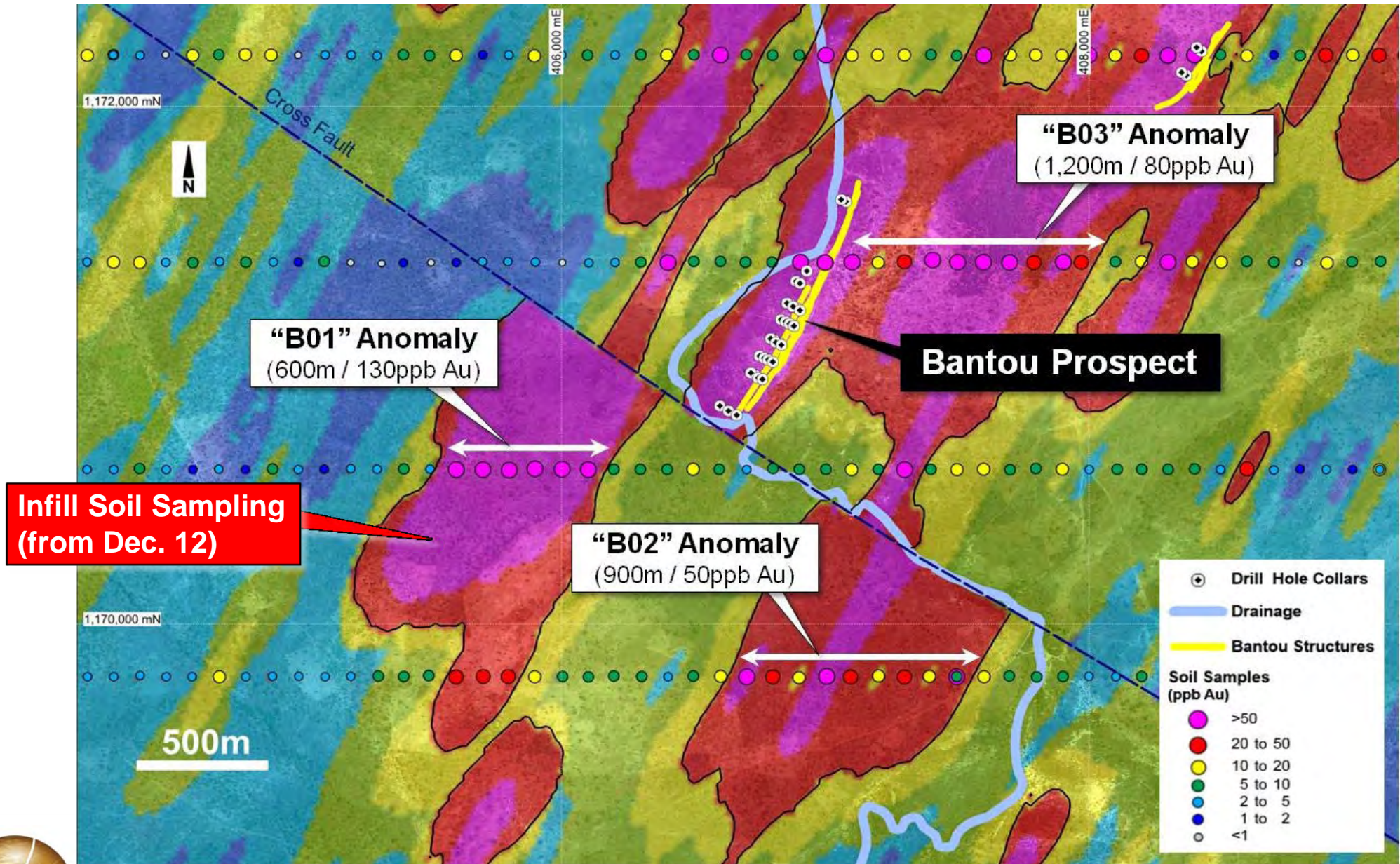
( Multiple structures defined / strike extensions to be tested / resource estimate to follow )





# Bantou – Potential Strike Extensions

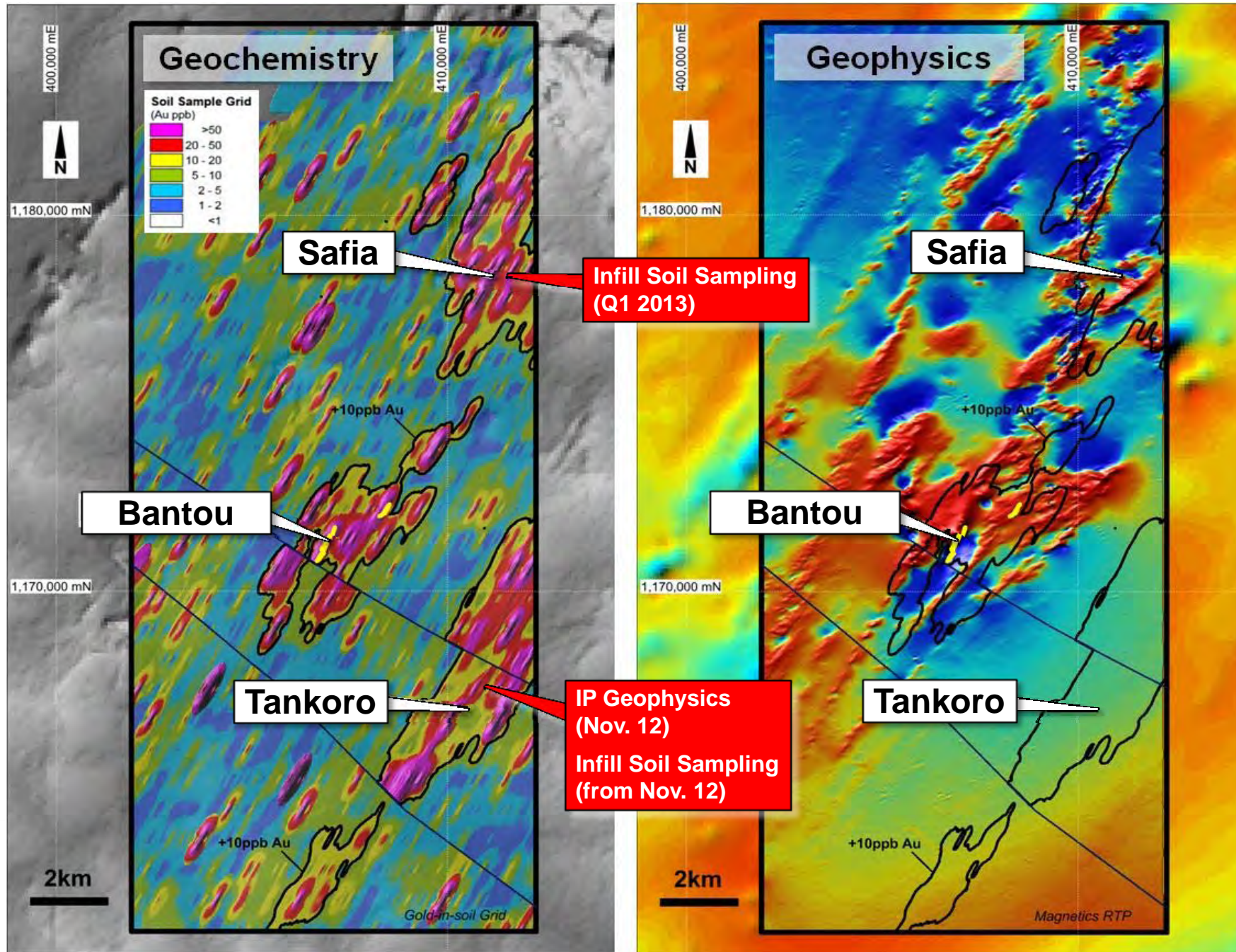
( Multiple gold-in-soil targets identified in recent soil sampling programs – infill soils then drilling )





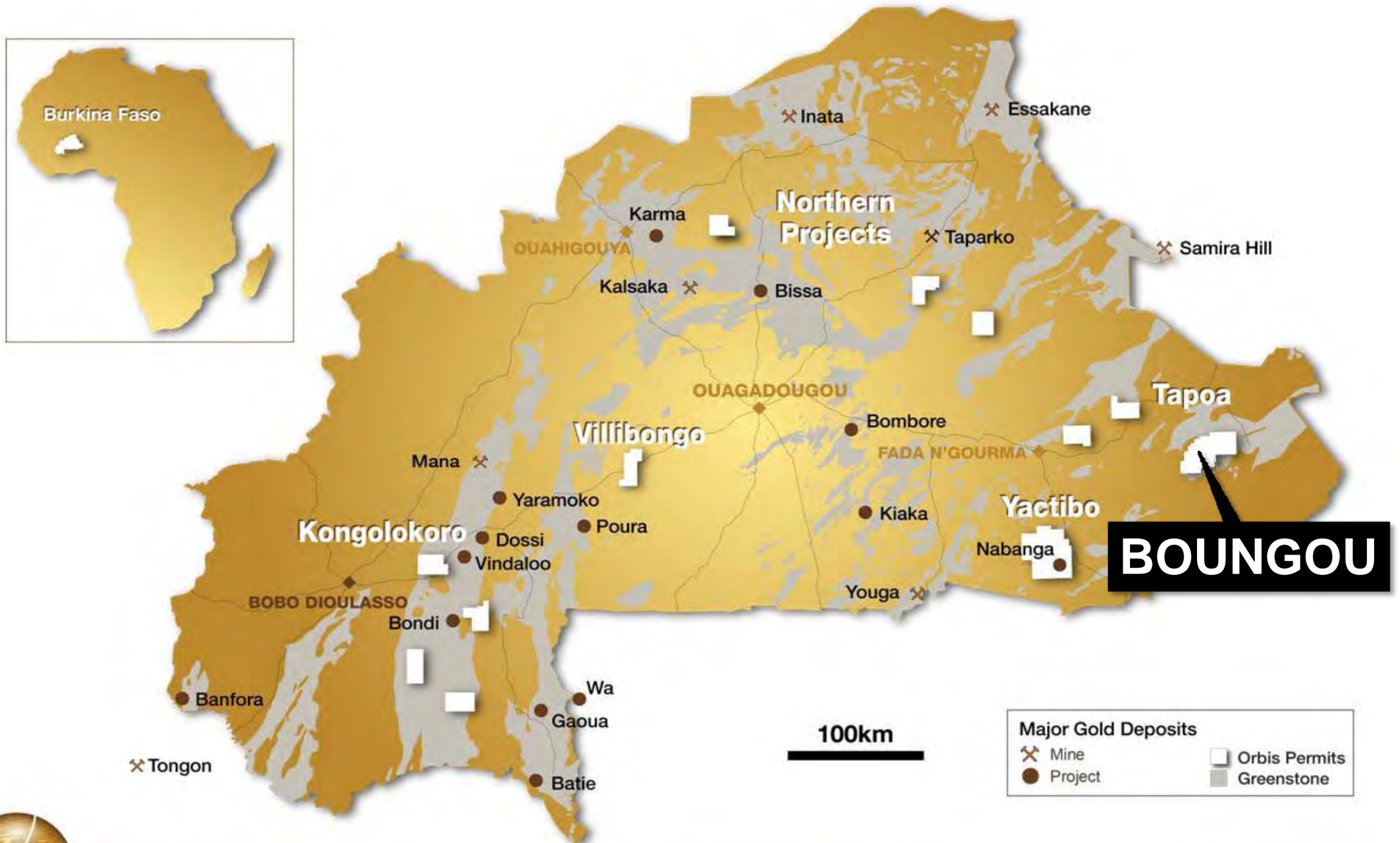
# Bantou – New Regional Gold Targets

( New gold-in-soil targets defined in Dynikongolo Permit in differing geophysical/geological settings)





# Boungou – A Third Gold Discovery





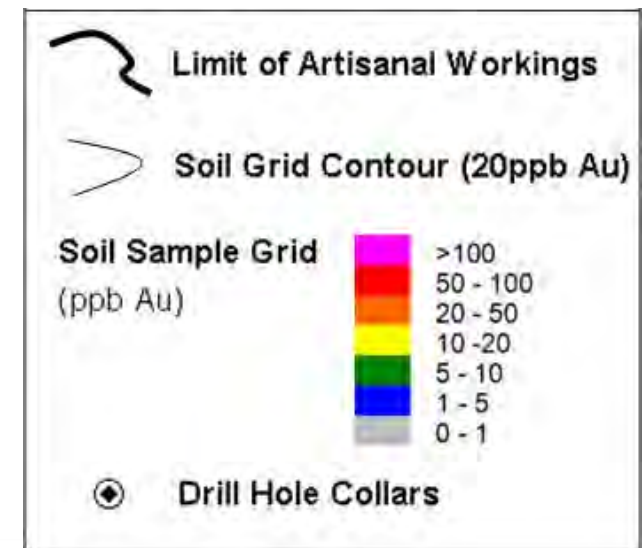
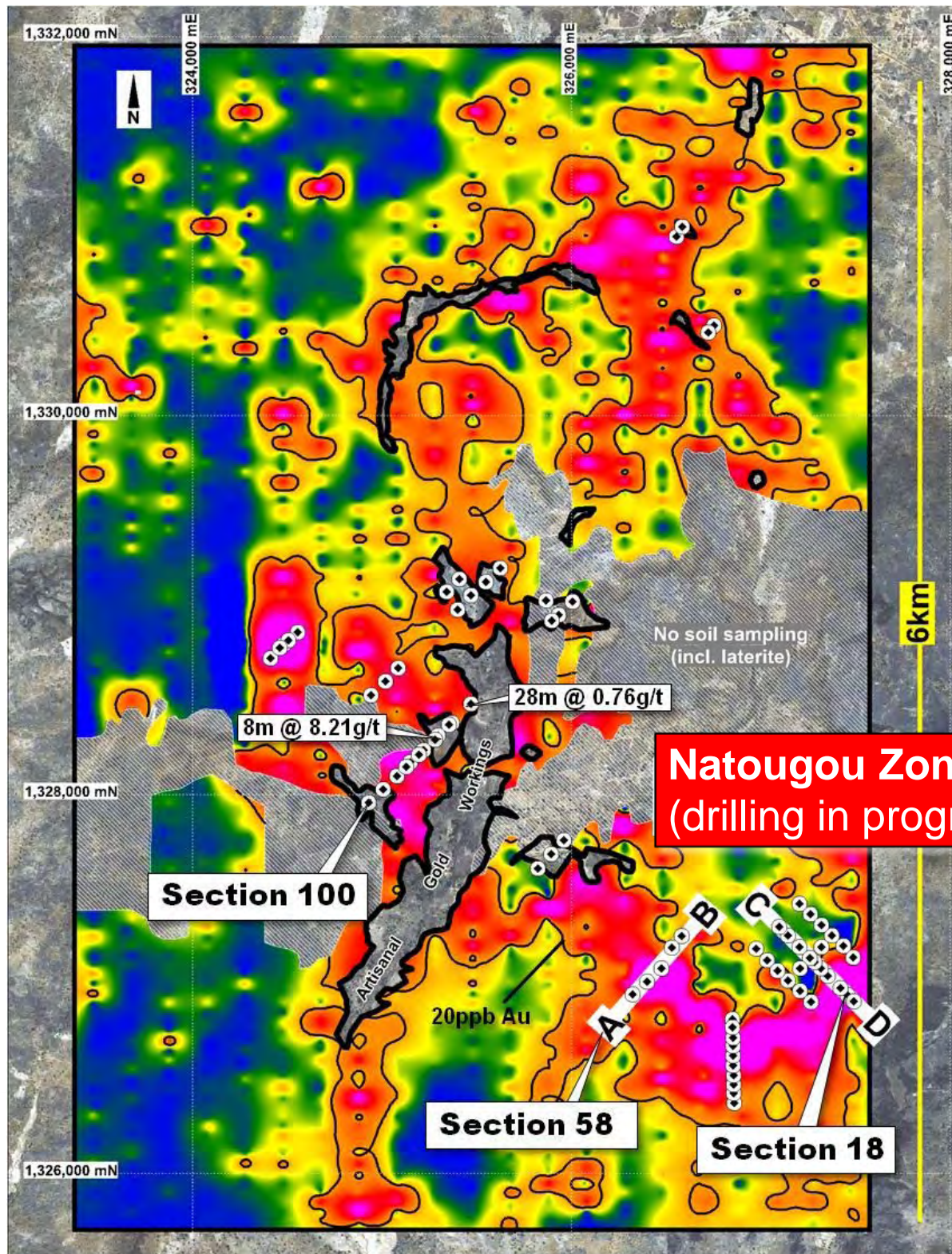
# Boungou – New Gold “Rush” (Feb. 2012)





# Boungou Prospect

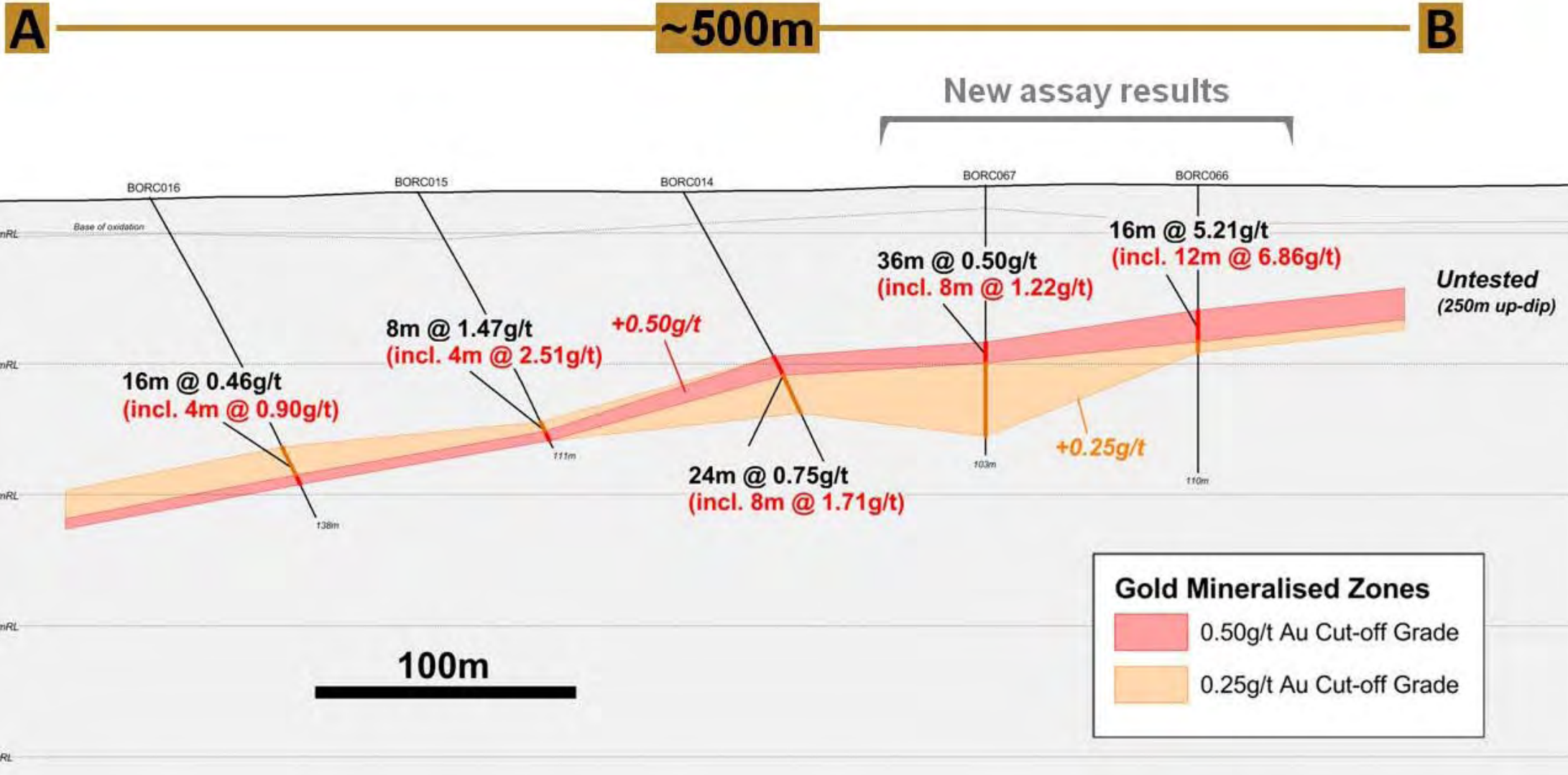
- extensive gold anomalies in initial soil sampling program
- 6.6km x up to 3.7km maximum width (@ +20ppb Au)
- multiple gold trends
- significant early RC drill hole results





# Natougou Cross Section 58

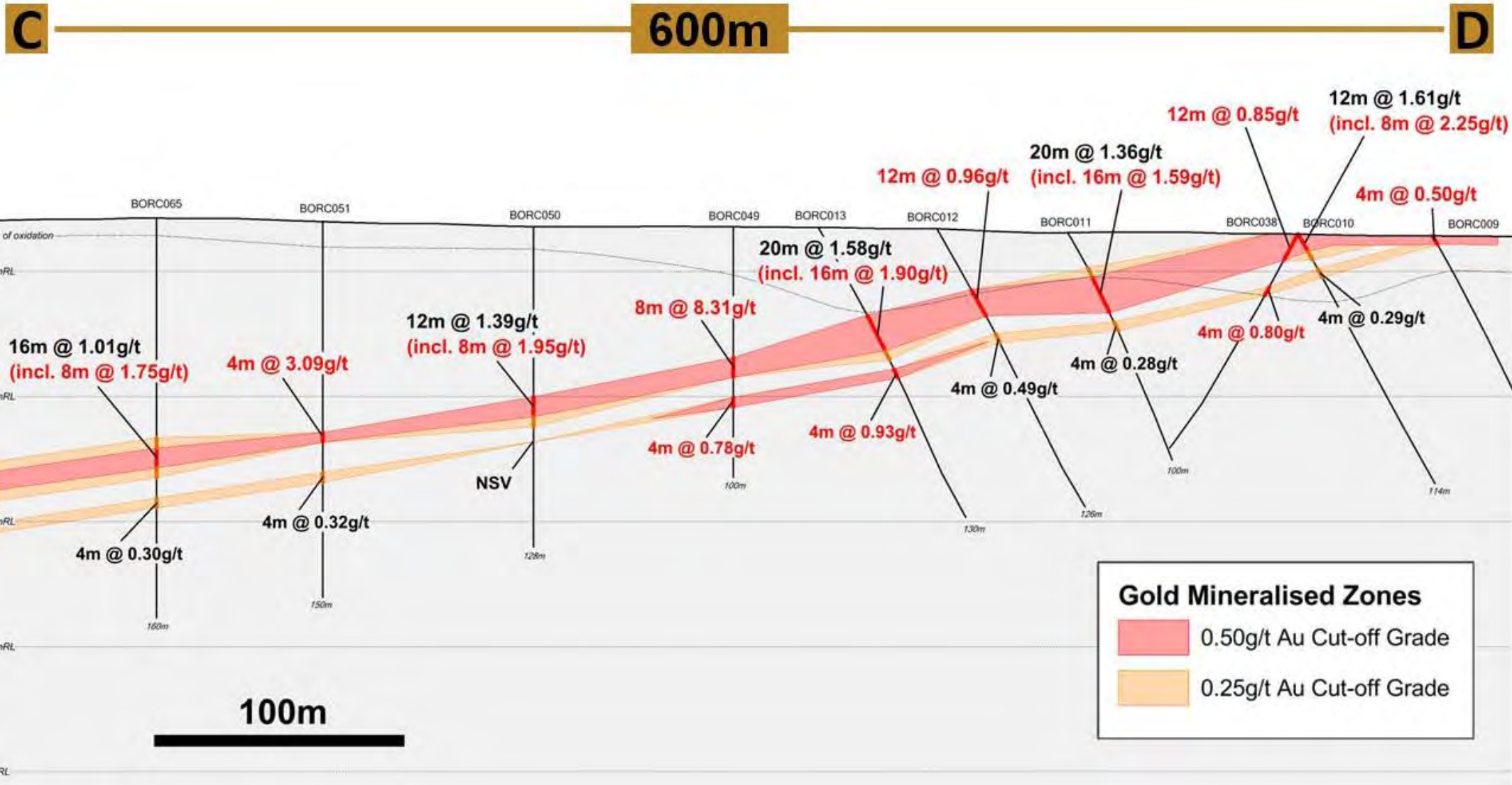
( +0.5g/t gold mineralisation intersected over 500m in cross section / open up and down-dip )





# Natougou Cross Section 18

( +0.5g/t gold mineralisation intersected from surface / shallow 10° dip / open at depth )

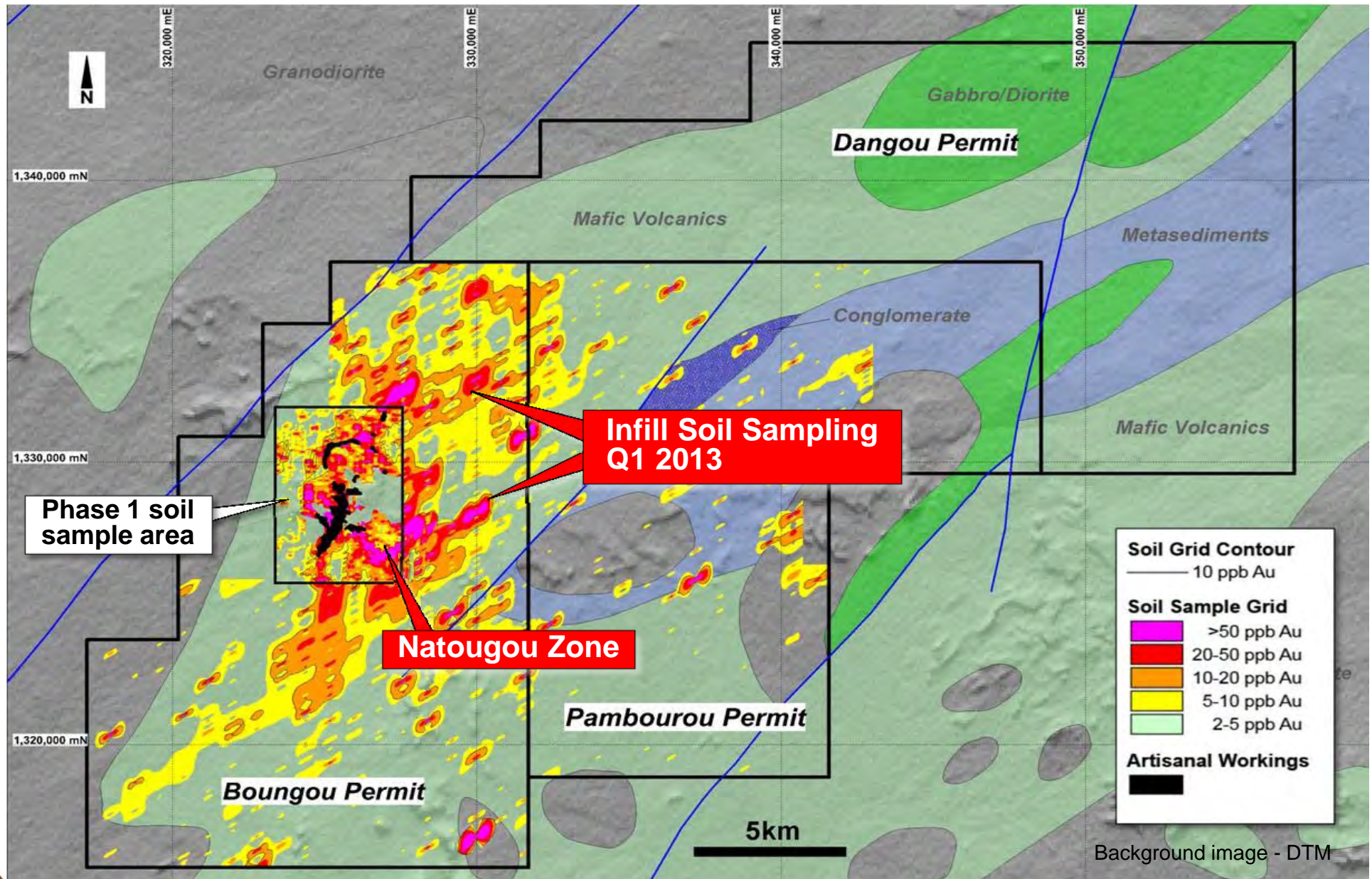


Intersections lengths shown are down hole lengths.



# Boungou – Soil Anomalies Extended

( New soil sampling extends high order anomalies / 5ppb Au anomalism extends over >100km<sup>2</sup>)





# Investment Summary

- Deep project portfolio in a world-class gold province
- Multiple prospects with demonstrated potential for major gold discoveries
- A\$15m 2012/13 exploration program commenced:

**Nabanga** - high grade gold deposit  
- 3.2Mt @ 6.5g/t Au for 660,000ozs gold\*  
- drilling to test strike/depth potential

**Bantou** - multiple new geochemical (gold-in-soil) targets  
- drilling proposed to test strike/depth extensions

**Boungou** - new discovery announced April 2012  
- large-scale gold system / multiple drill targets

**... currently drilling multiple gold targets**





**ORBIS**GOLD

Contact

**Peter Spiers**

**Managing Director**

**+61 (0) 7 3198 3040**

**+61 (0) 409 407 265**

**pspiers@orbisgold.com**

**www.orbisgold.com**

