

6th November 2012



Oakland

RESOURCES

Annual General Meeting – Operations Update

Disclaimer

This presentation has been prepared by Oakland Resources Limited (Oakland). The information contained herein is a professional opinion only and is given in good faith.

Certain information in this presentation has been derived from third parties and though Oakland has no reason to believe that it is not accurate, reliable or complete, it has not been independently audited or verified by Oakland.

Any forward-looking statements in this presentation are subject to uncertainties, risk and contingencies which are outside the control of, and may be unknown to, Oakland. They relate only to the date of this presentation, they assume the success of Oakland's strategies and fund raising efforts, and they are subject to significant regulatory, business, competitive and economic uncertainties and risk. Actual future events may vary materially from the statements and the assumptions on which the opinions are based.

Oakland makes no representation or warranty as to the accuracy, reliability or completeness of the information in this document and does not take responsibility for updating or correcting any errors or omissions which may become apparent after this is released.

To the extent permitted by law, Oakland and its officers, employees, related bodies and agents disclaim all liability, directly, indirectly or consequentially, for any loss or damage suffered by a recipient or other persons arising out of, or in connection with, any use or reliance on this presentation or information.

The information in this report that relates to Mineral Resources and Exploration Results are based on information compiled by Mr Mark Arundell who is a Member of the Australian Institute of Geoscientists. Mr Arundell is the Managing Director of Oakland. Mr Arundell has sufficient experience which is relevant to the style of mineralisation and type of deposit under consideration and to the activity which he is undertaking to qualify as a Competent Person as defined in the 2004 Edition of the 'Australasian Code for Reporting of Exploration Results, Mineral Resources and Ore Reserves'. Mr Arundell consents to the inclusion in the report of the matters based on his information in the form and context in which it appears.



Company Profile

➤ Key Data

ASX Listed December 2010

30 million shares, 12.1 million options

Dedicated VHMS / porphyry explorer

Lachlan Gold Copper province

➤ Key People

Vernon Tidy – Non Executive Chairman

Anthony Polglase – Non Executive Director

Mark Arundell – Managing Director

Scott Funston – Company Secretary

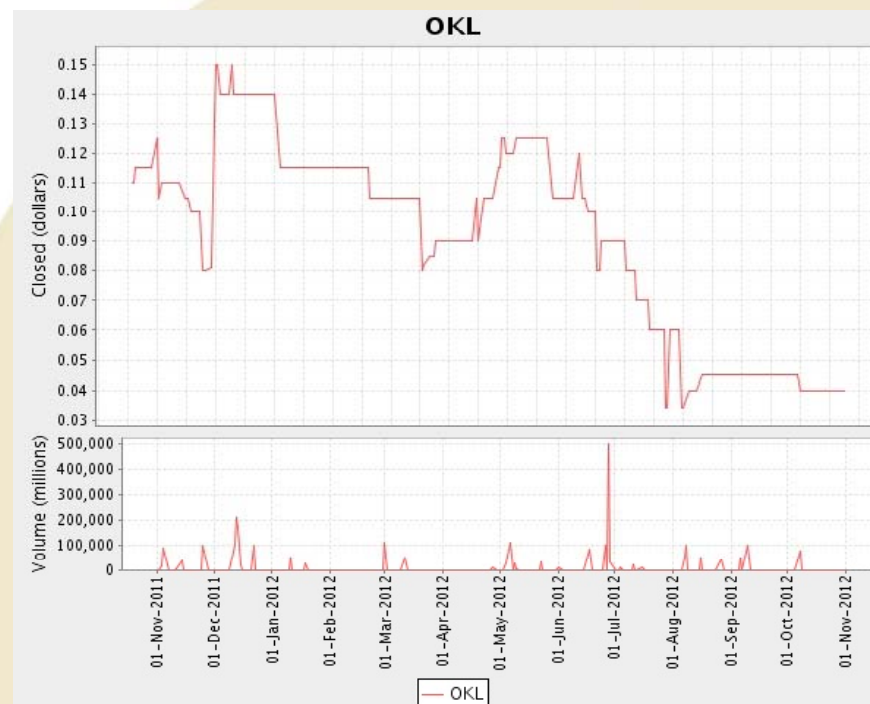
➤ Key Projects

Apsley – advanced Copper Silver Zinc

Wongoni – porphyry Gold Copper

Crosby – Gold + Copper targets

Billilingra – Gold target



Oakland Resources



➤ ***Advanced Project***

- **Apsley** – Copper Silver Zinc deposit
 - Ex Target* : 2.0-4.0Mt @ 0.5-0.8% Cu, 1.3-2.0% Zn, 5-10g/t Ag

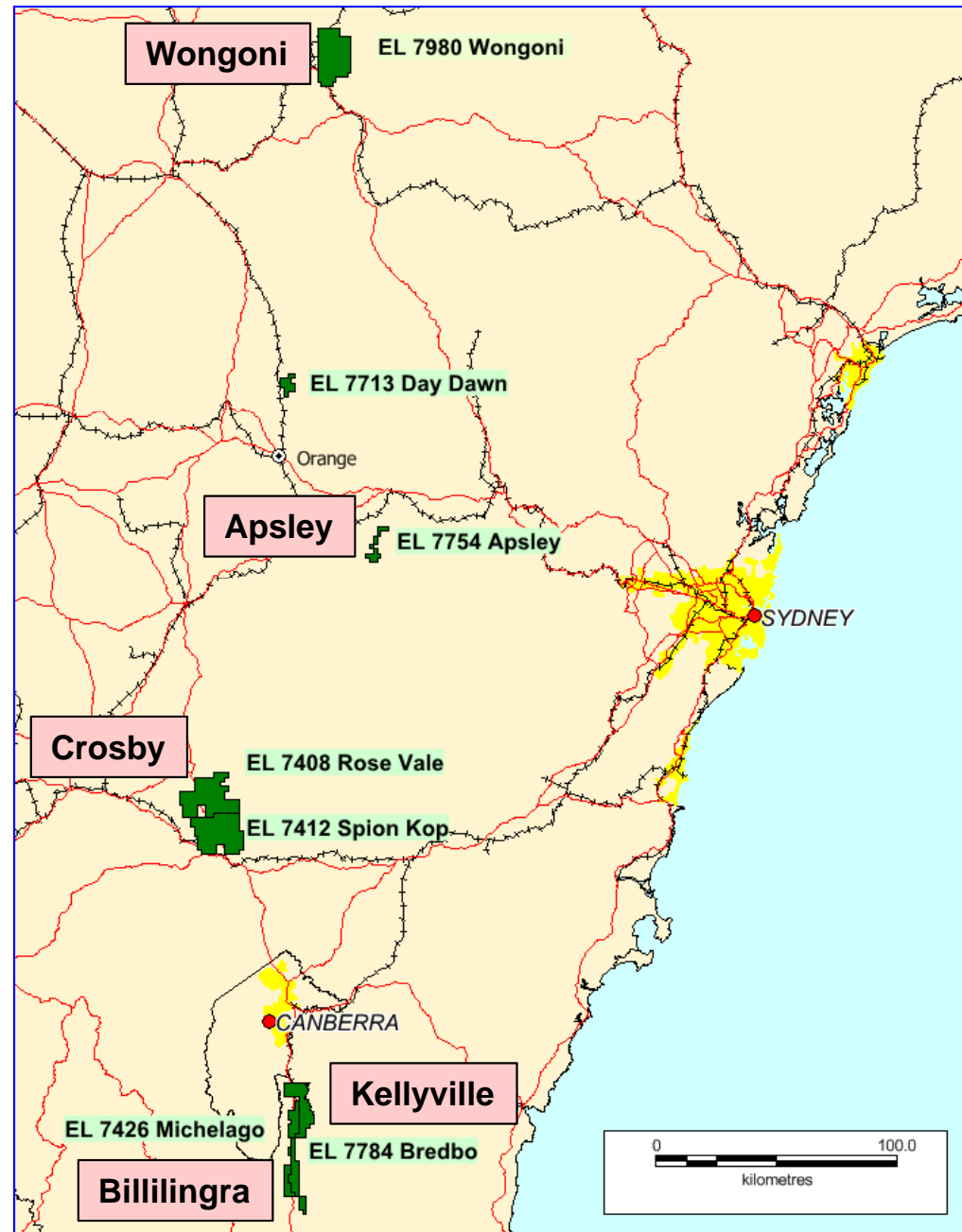
** The potential quantities and grades presented are conceptual in nature, that there has been insufficient exploration to define a Mineral Resource and it is uncertain if further exploration will result in the determination of a Mineral Resource.*

➤ ***Drill Targets***

- **Wongoni** – porphyry Gold-Copper target (Cadia/Northparkes)
- **Crosby** – Gold + Copper soil target
- **Billilingra** – Gold soil target
- **Kellyville / Ponderose** – Gold rock sample anomaly

➤ ***Evaluating JV opportunities***

Oakland Lachlan Projects



Apsley Prospect

➤ Apsley

- ❖ Historic copper producer – few thousand tons
- ❖ High grade Copper, Zinc, Silver deposit; low Lead, Gold

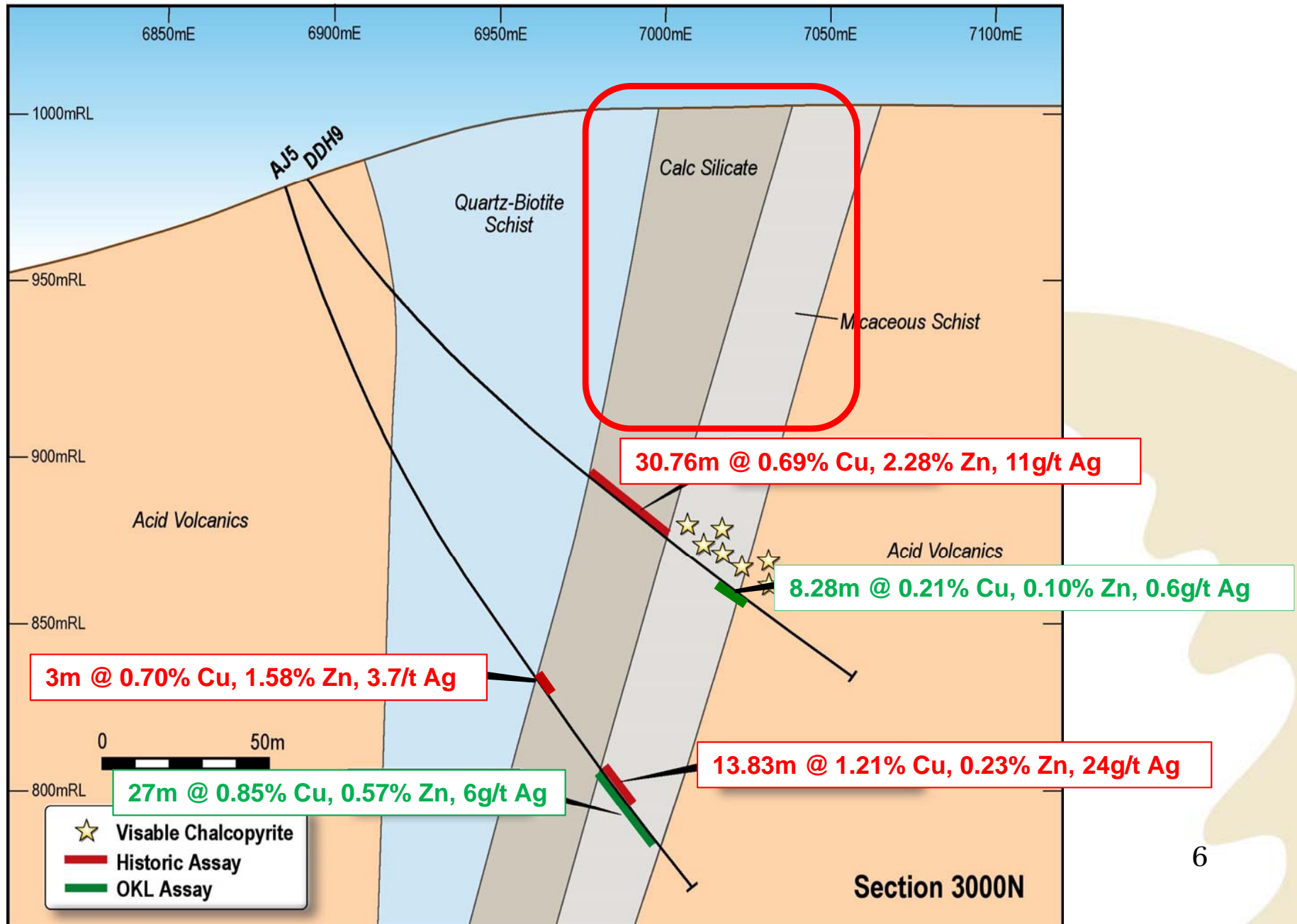
➤ Previous Exploration

- ❖ 1970's - Horizon – mapping, six DDH, TURAM
- ❖ Early 1980's - Jodedex – five DDH, IP, soils
- ❖ Mid 1980's - CRA – mapping, soils, SIROTEM, AP & re-interpretation
- ❖ 2000's - D'Aguilar – some core re-assay

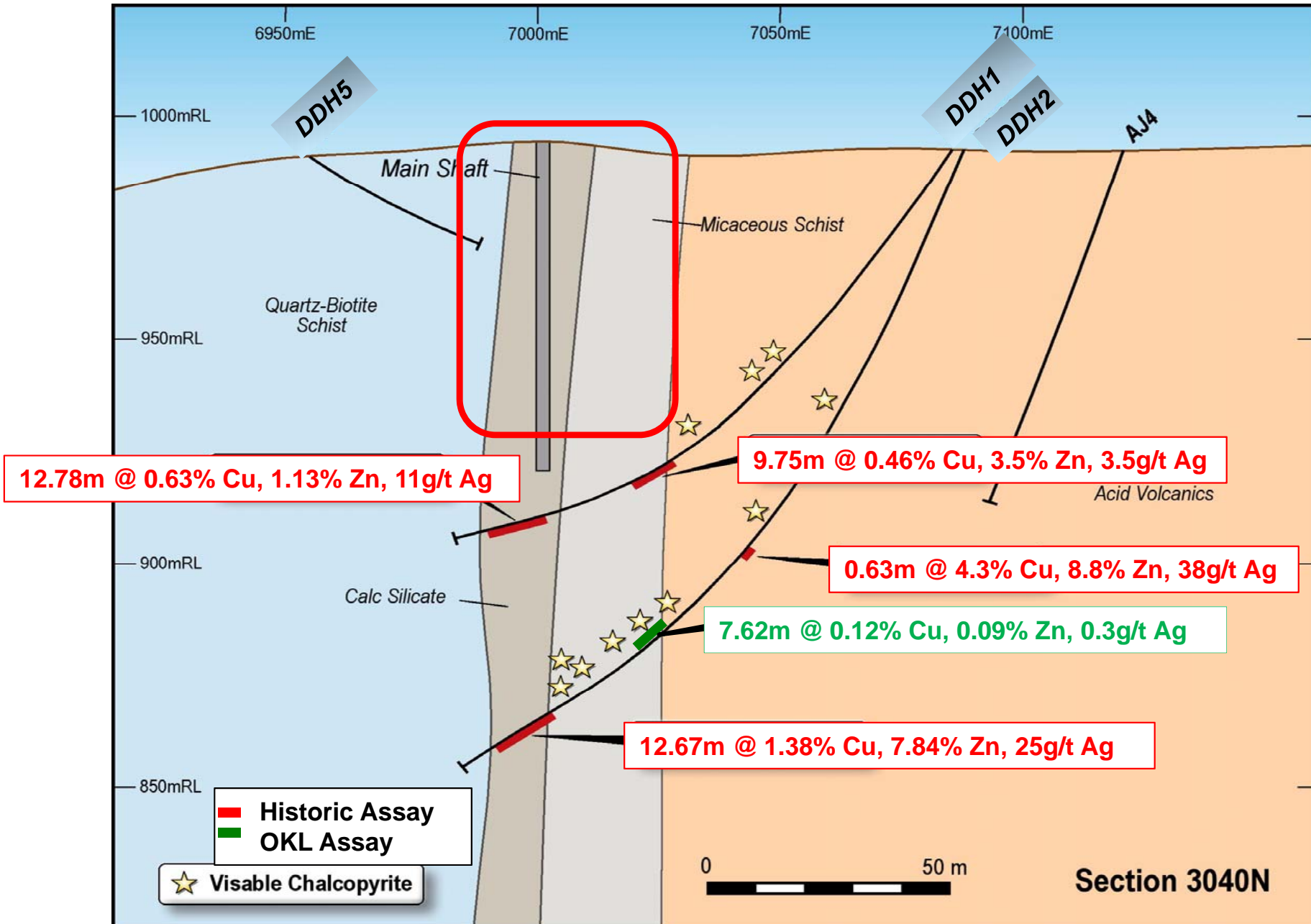
➤ Prior focus on high grade (>1.0%) copper mineralisation

➤ Oakland's focus : controls on Copper mineralisation

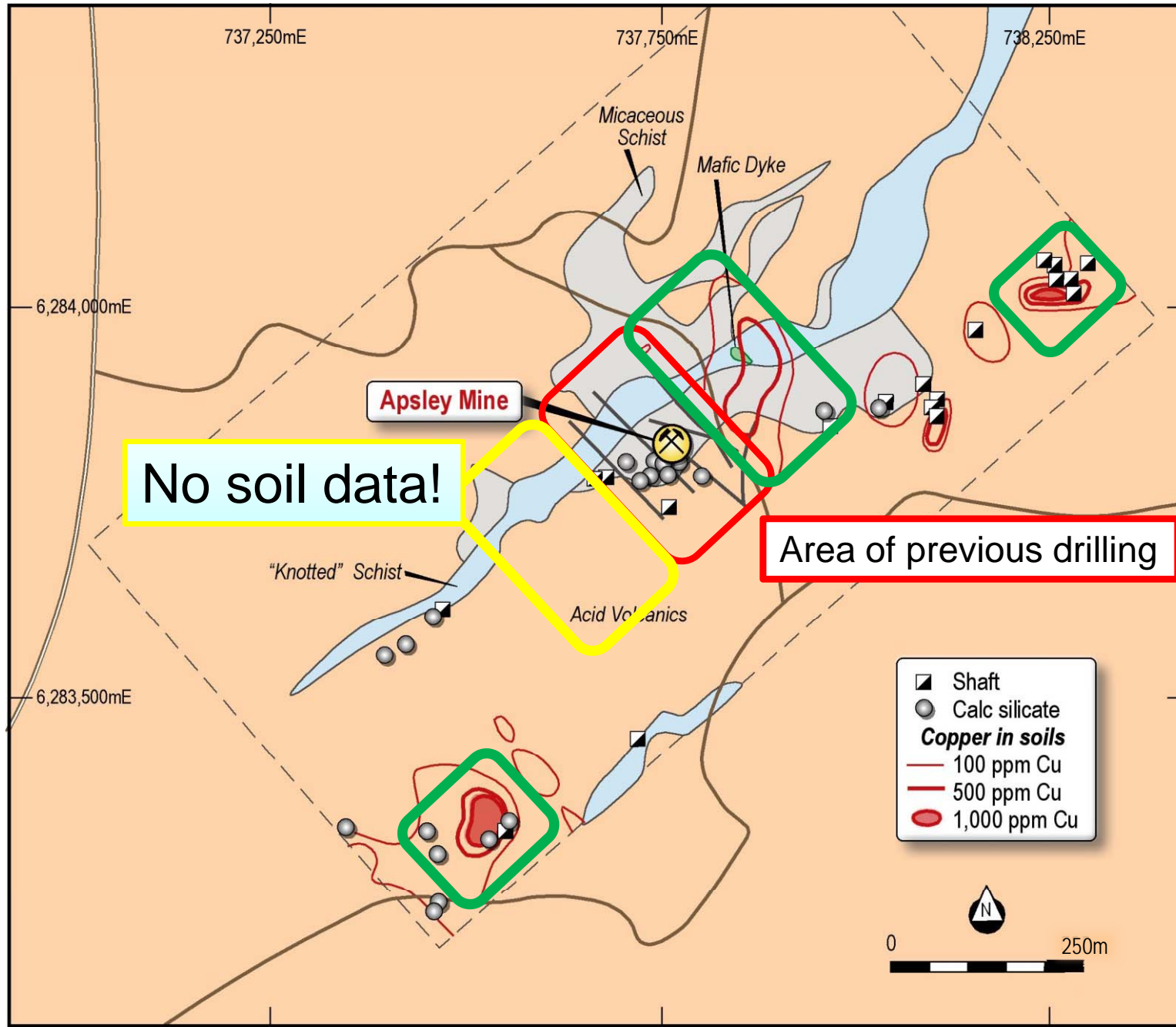
Apsley – Section 3000N



Apsley – Section 3040N



Apsley – CRA map & soils



Summary - Apsley

- Historic small scale Copper Zinc producer
- Limited modern exploration
- Previous explorers focused on high grade

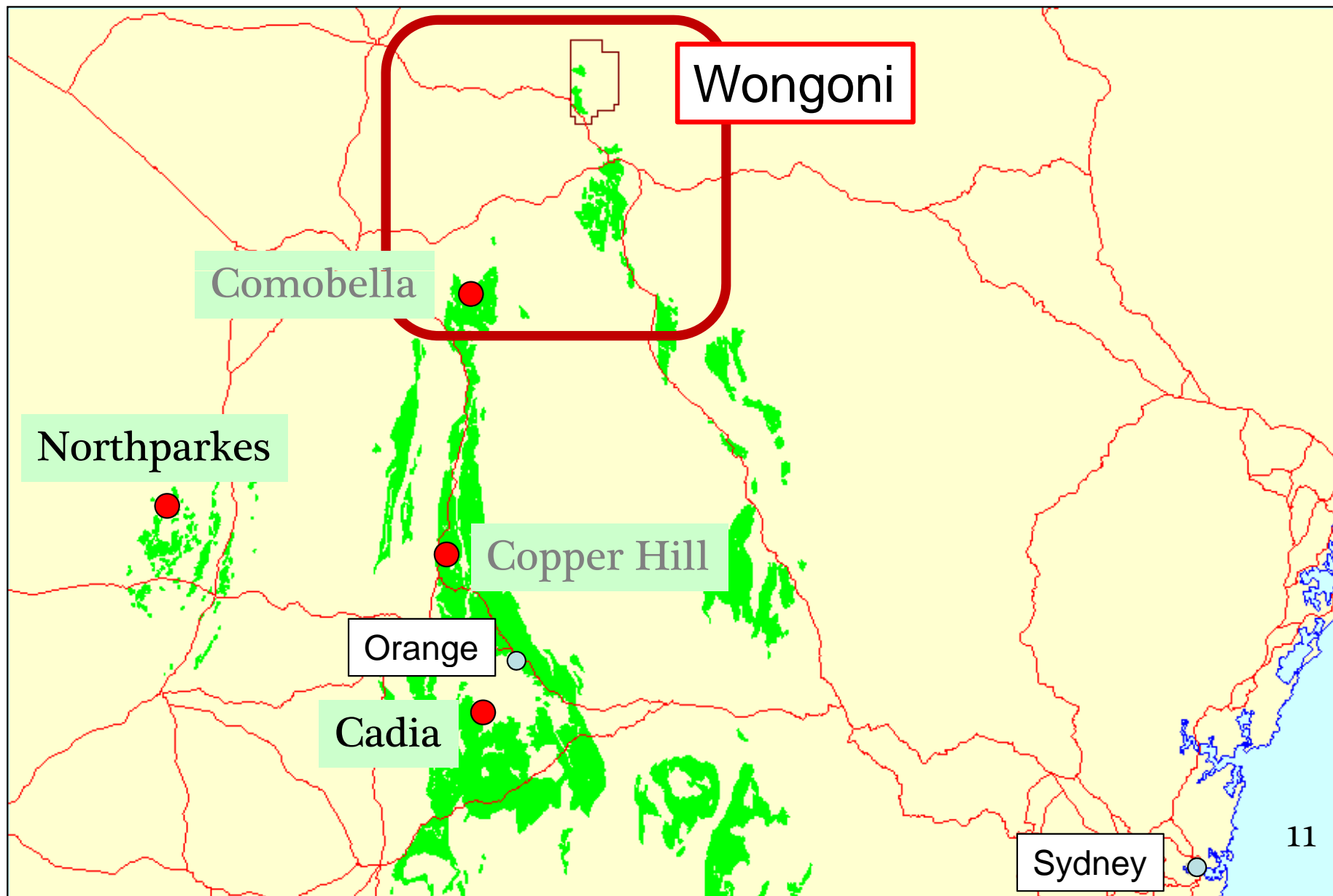
- ✓ Copper Silver Zinc Exploration Target defined
- ✓ Excellent potential to define significant resource
 - ✓ Mineralisation open north, south, up dip & at depth
 - ✓ Undrilled soil anomalies

Wongoni

- Under explored Cadia / Northparkes host rock sequence
- Unrecognised porphyry Gold-Copper alteration system
- Alteration is zoned → vector to porphyry Gold-Copper mineralisation
- Shallow cover (<100m) barrier to previous exploration

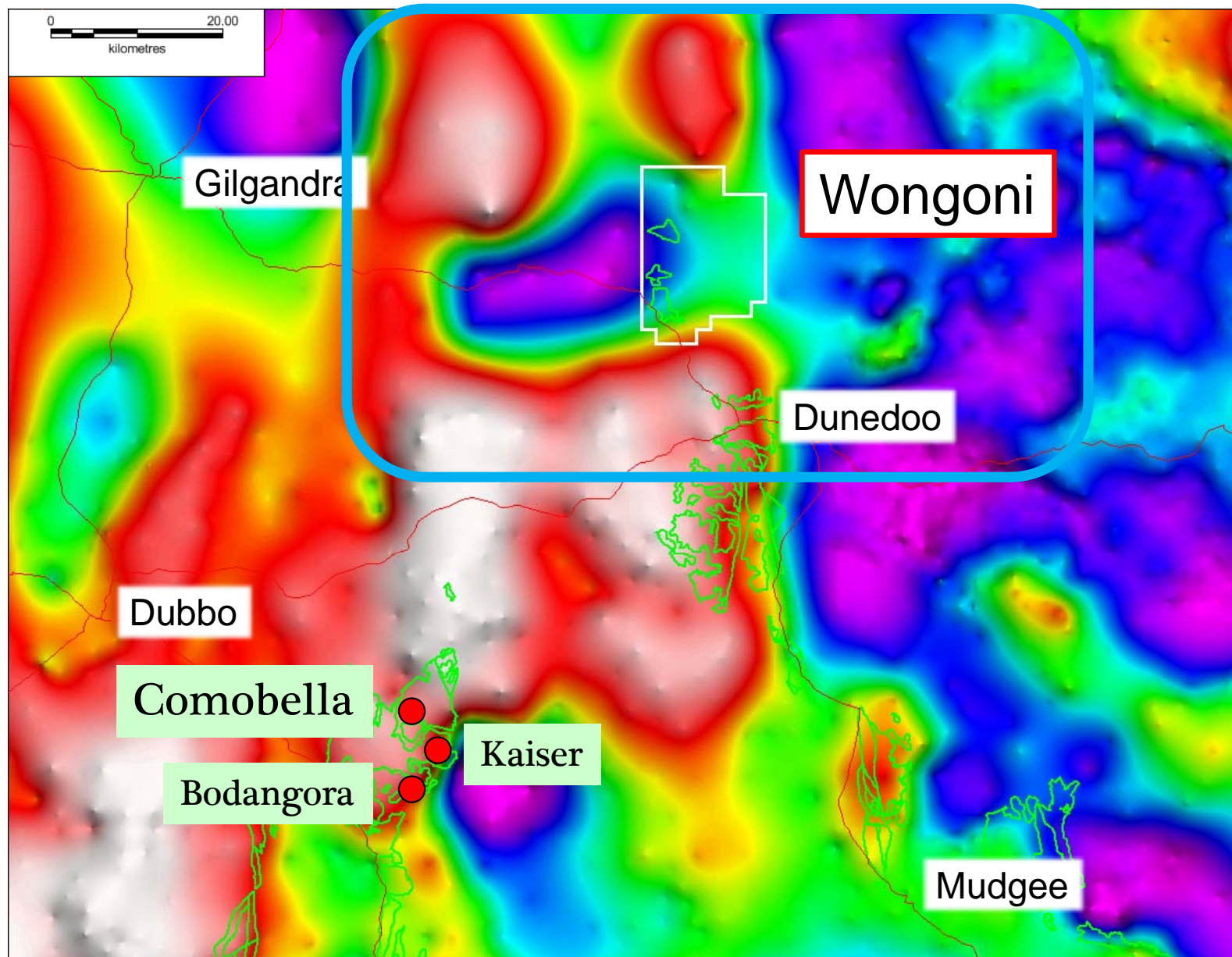


Wongoni – Porphyry Gold



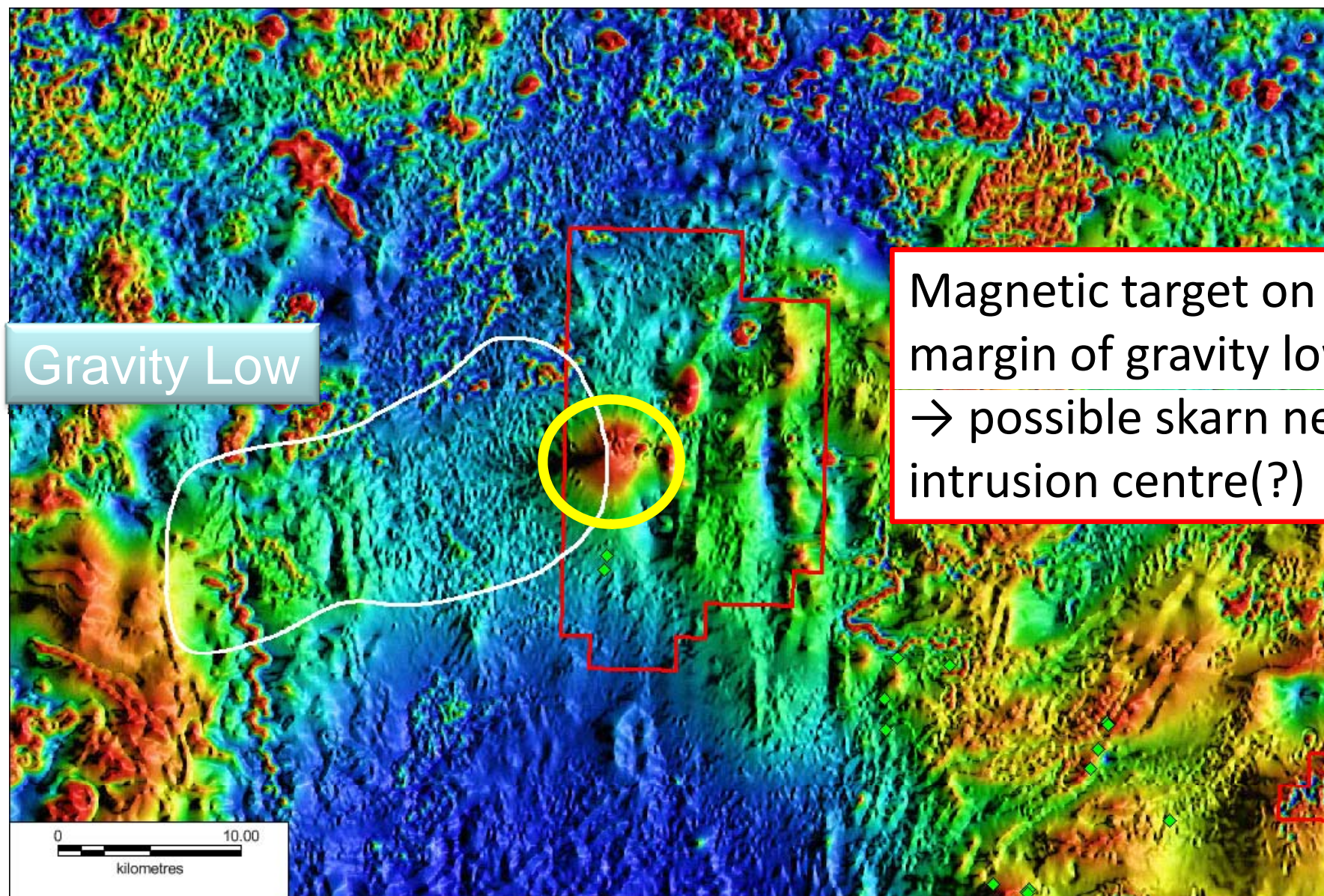


Wongoni – Gravity





Wongoni - Magnetics



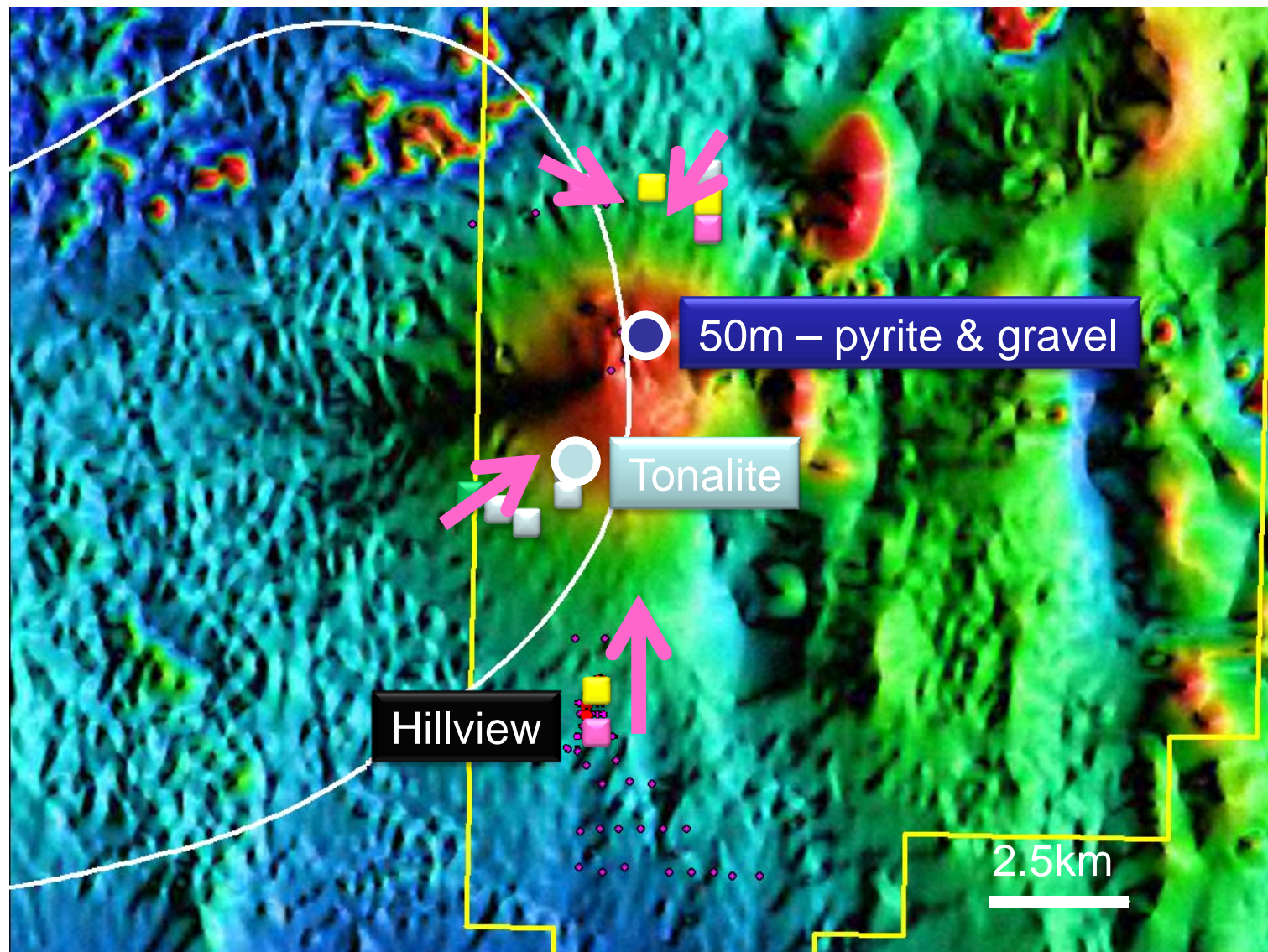
Gravity Low

Magnetic target on
margin of gravity low
→ possible skarn near
intrusion centre(?)

0 10.00
kilometres



Wongoni – Alteration



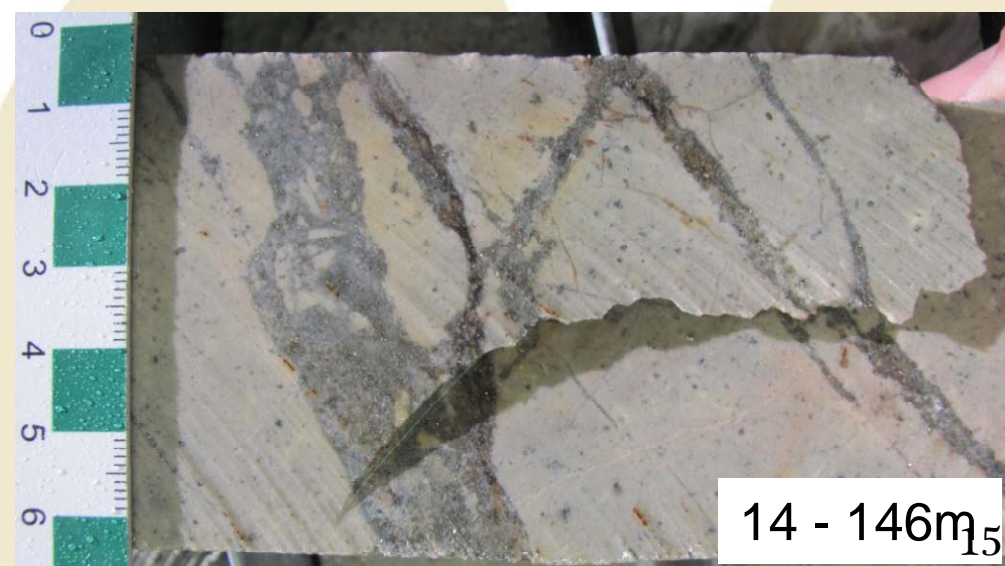
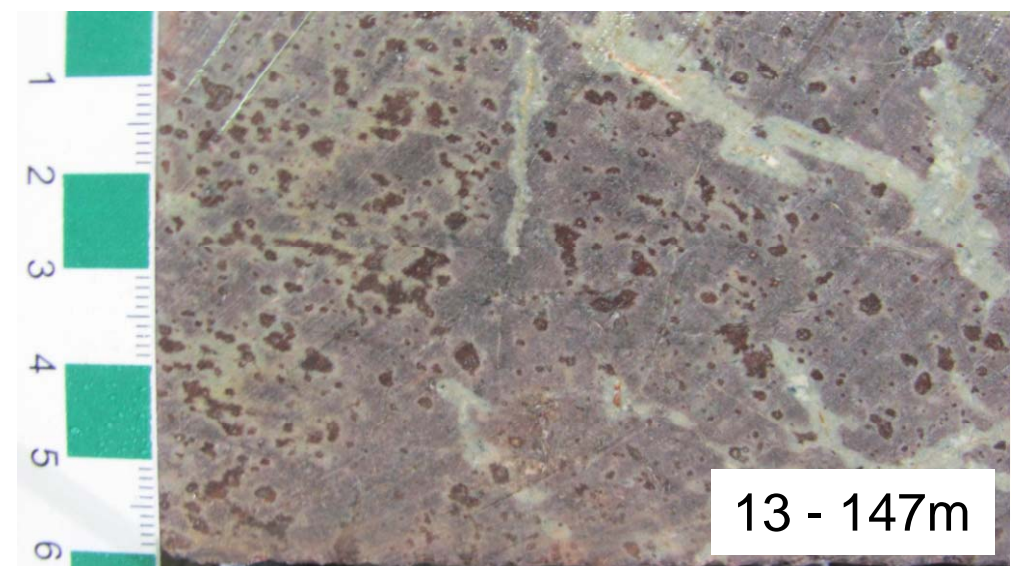
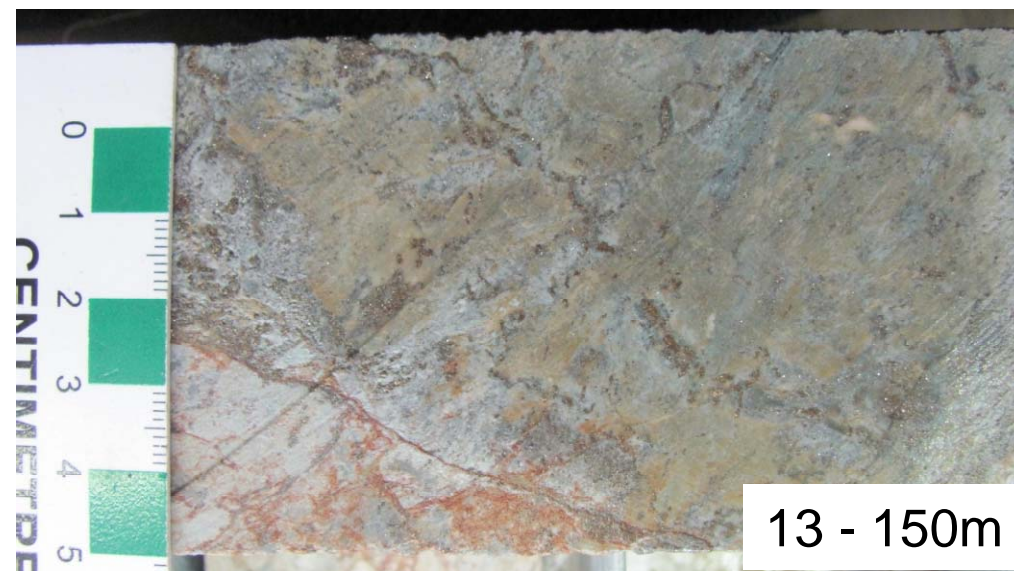
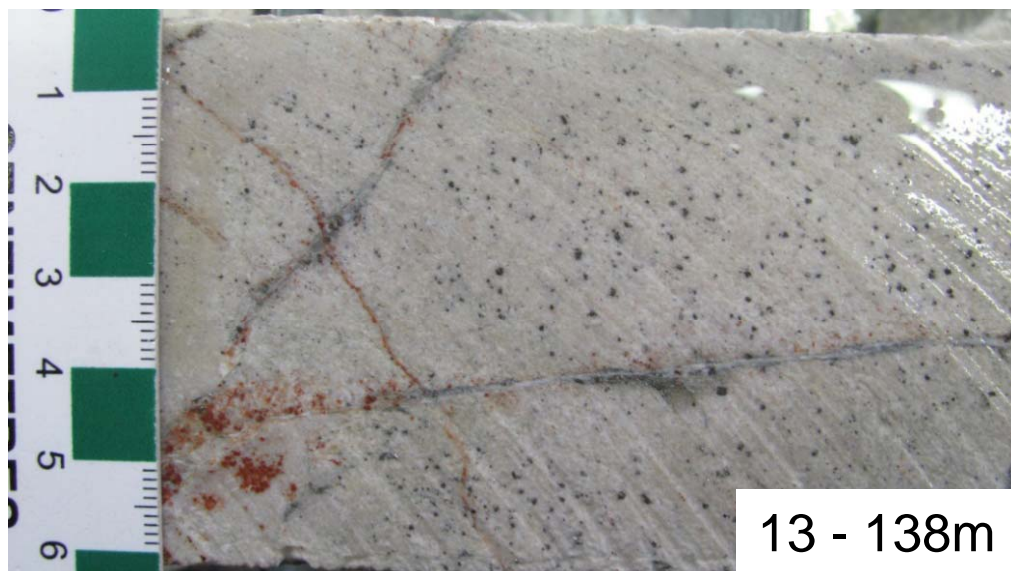
- Chlorite
- Muscovite/Chlorite
- Muscovite
- Albite

- CRA
- North



Oakland
RESOURCES

Wongoni – Hillview Prospect

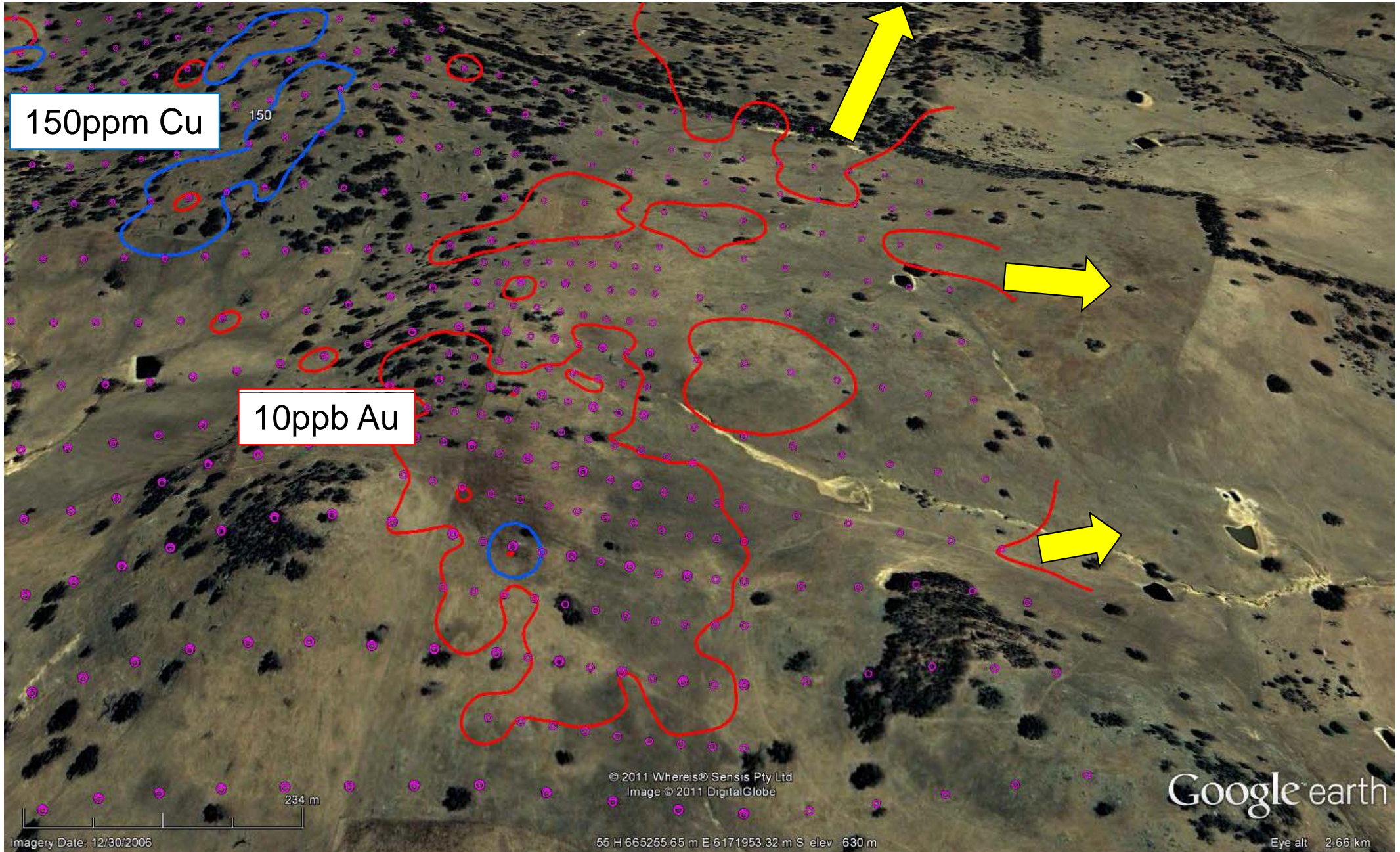


Wongoni

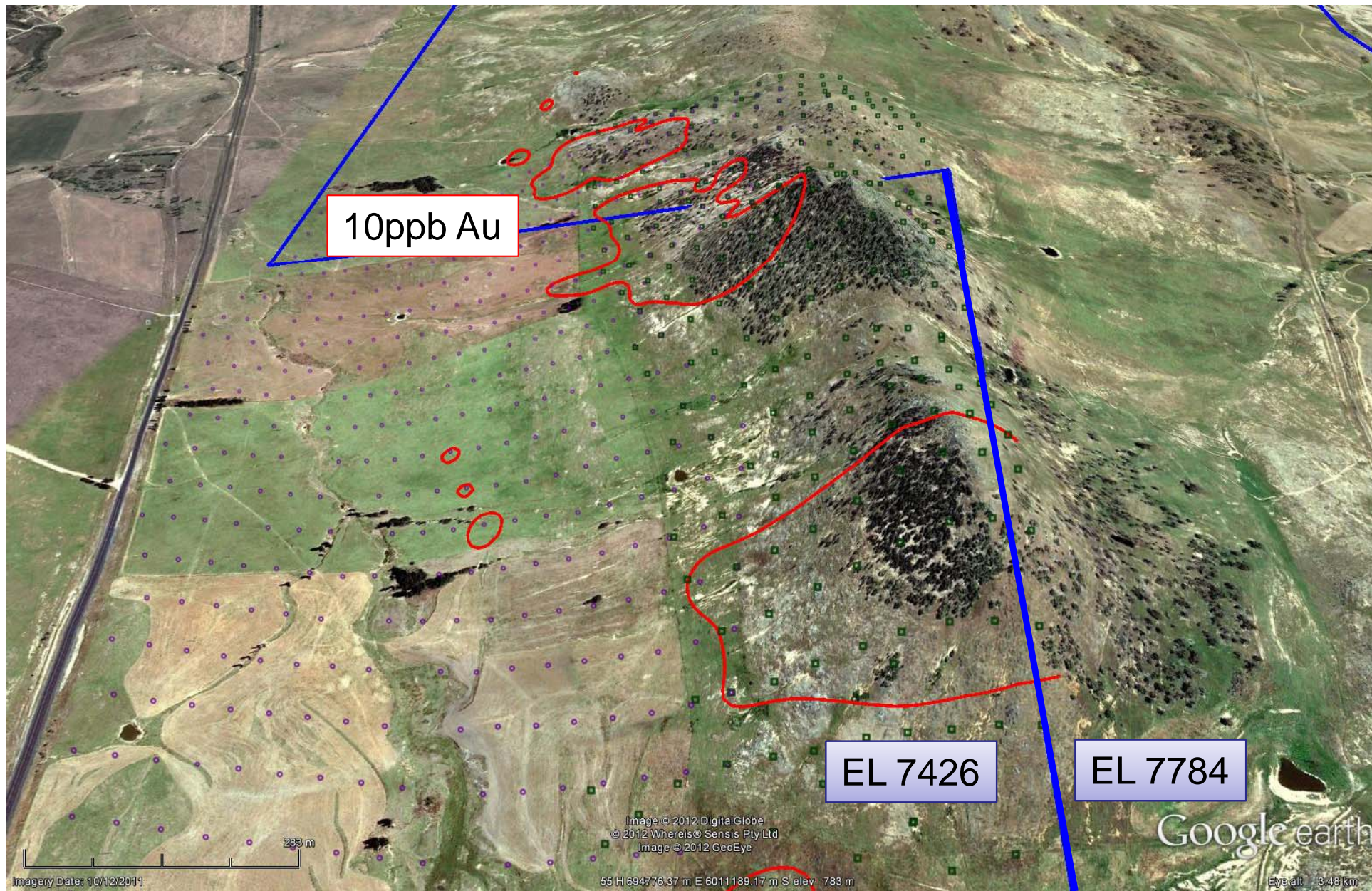
- Historic small scale Copper producer
- Limited modern exploration
- Previous explorers focused on shallow mineralisation

- ✓ Under explored Cadia host rock sequence
- ✓ Unrecognised porphyry Gold-Copper alteration system advanced argillic
- ✓ Alteration is zoned → vector to porphyry Gold-Copper mineralisation
- ✓ Shallow cover (<100m) barrier to previous exploration

Crosby Prospect



Billilingra Prospect



Oakland Resources - Summary

- Developing robust drill targets
- Focused on under explored Lachlan Gold-Copper province
- Pipeline of prospects
 - Advanced Project – Apsley
 - Drill targets – Wongoni, Crosby, Billilingra, Kellyville
- All projects - **100%** Oakland Resources