

Olympus Pacific Minerals Inc. Production & Exploration

Forward Looking Statements

This presentation by Olympus Pacific Minerals Inc. ("Olympus") may include statements concerning future operations, prospects, strategies, plans, projections, forecasts, financial conditions and economic performance, as well as goals intentions and objectives, that are forward-looking statements within the meaning of the United States Private Securities Litigation Reform Act of 1995 or Canadian securities legislation. These statements are necessarily based upon a number of assumptions and estimates that, while considered reasonable by us, are subject to significant risks, uncertainties and contingencies, many of which are beyond our control. Known and unknown factors could cause actual results to differ materially from those projected in the forward-looking statements. Such factors include fluctuations in precious metal prices, unpredictable results of exploration activities, uncertainties inherent in the estimation of mineral reserves and resources, fluctuations in the costs of goods and services or in currency markets, problems associated with exploration, development and mining operations, changes in legal, social or political conditions in the jurisdictions where Olympus operates, lack of appropriate funding and other risk factors, as discussed in Olympus' filings with Canadian and United States securities regulatory agencies. These filings are available by visiting the Securities and Exchange Commission's web site www.sec.gov or Olympus Pacific Minerals Inc.'s web site at [HYPERLINK "http://www.olympuspacific.com" www.olympuspacific.com](http://www.olympuspacific.com). Should one or more of these risks or uncertainties materialize, or should underlying assumptions or estimates prove incorrect, actual results may vary materially from those anticipated, believed, estimated or expected. All statements, other than statements of historical fact, are forward-looking statements. When used, words like "anticipates", "expects", "believes", "forecasts", "projects", "estimates", "seeks", "plans", "intends" and similar expressions are intended to identify forward-looking statements designed to fall within securities laws' safe harbors for forward-looking statements. Olympus cautions readers not to place undue reliance on any such forward-looking statements, which speak only as of the date made and should not be construed as a guarantee of future performance. Olympus disclaims any obligation to subsequently update or revise any forward-looking statements to reflect events or circumstances after the date of such statements or to reflect the occurrence of anticipated or unanticipated events. This presentation and the information contained herein do not constitute an offer or a solicitation of an offer for sale of any securities. None of the information contained herein is intended to be, and shall not be deemed to be, incorporated into any of Olympus' or its affiliates' securities related filings or documents. We Seek Safe Harbor.

Qualified Person

Unless otherwise noted, the technical information in this presentation has been prepared and/or reviewed by Mr. Rod Murfitt, Chief Geologist of Olympus Pacific Minerals Inc., who is our Qualified Person as defined in National Instrument 43-101 of the Canadian Securities Administrators. The Company employs a quality control program to ensure best practices in sampling and analysis of drill core and rock samples. Mr. Murfitt reviews all assay results prior to public release.

Mineral resources that are not mineral reserves do not have demonstrated economic viability. Mineral resource estimates do not account for mineability, selectivity, mining loss, and dilution. These mineral resource estimates include inferred mineral resources that are normally considered too speculative geologically to have economic considerations applied to them that would enable them to be categorized as mineral reserves. There is also no certainty that these inferred resources will be converted to measured and indicated categories through further drilling, or into mineral reserves once economic considerations are applied.

JORC

Scientific or technical information in this presentation has been prepared under the supervision of Rod Murfitt, Chief Geologist for Olympus and a member of the Australasian Institute of Mining and Metallurgy (AusIMM). Mr. Murfitt has sufficient experience which is relevant to the style of mineralization under consideration and to the activity which he is undertaking to qualify as a Competent Person, as defined in the 2004 Edition of the "Australasian Code for Reporting of Exploration Results, Mineral Resources and Ore Reserves" (the JORC Code). Mr. Murfitt consents to the inclusion in this presentation of the information, in the form and context in which it appears.

The resource figures for the Bau Gold Property have been prepared by Mr Graeme Fulton of Terra Mining Consultants Ltd and Mr Murray Stevens of Stevens and Associates, both of whom are members of the Australasian Institute of Mining and Metallurgy (AusIMM) and are Competent Persons, as defined in the 2004 Edition of the "Australasian Code for Reporting of Exploration Results, Mineral Resources and Ore Reserves" (the JORC Code) and National Instrument 43-101 of the Canadian Securities Administrators. Both Mr Fulton and Mr Stevens consent to the inclusion in this report of the information that they have compiled in relation to the Bau Gold Property, in the form and context in which it appears.

OLYMPUS PACIFIC MINERALS

SE ASIA

VIETNAM

MALAYSIA

PHILIPPINES

TSX:OYM ASX:OYM OTCQX:OLYMF



OLYMPUS
PACIFIC MINERALS

Board of Directors

David Seton
Executive Chairman

Mr. Seton's experience in the mining industry spans 30 years and includes mine discoveries and development in Africa, Australasia and Asia as well as corporate activities in Australasia and North America. He is a lawyer by training but has spent the majority of his working career building successful mining companies.

Jon Morda
Audit Chair

A chartered accountant with more than 21 years mining experience. Former CFO of Alamos Gold Inc. Jon serves as Chairman of the Olympus Audit Committee.

Kevin Tomlinson
Deputy Chair & Lead Independent

A Canadian mining professional with over 30 years of international experience. Kevin has a M.Sc. degree in structural geology and extensive corporate experience that includes expertise in equity capital markets and advisory in merger & acquisitions for the global mining industry.

Les Robinson
Governance Chair

Over 21 years experience in the financial markets sector. Recently a senior manager with one of Australia's leading banks where he specialized in corporate and institutional advisory work. Les has a Bachelor of Commerce (Honours) degree.

John Seton
Chief Executive Officer

John Seton has extensive experience in the resources sector and corporate management. Mr. Seton is a former President of Olympus, former chairman of Summit Resources Limited and past Chairman of the Vietnam/New Zealand Business Council and holds or has held a number of directorships in companies listed on the Australian Stock Exchange, Toronto Stock Exchange and New Zealand Stock

Darin Lee
Chief Operating Officer

Darin Lee graduated from the University of Alberta (1987) receiving a Bachelor of Science, Mineral Process Engineer. He is an experienced, knowledgeable, and global senior leader possessing broad based expertise in general management, marketing, process engineering, project management, research and development.

Darin has successfully led operations with over 2000 employees, and annual operating budgets of more than \$600M. In addition, he has planned and executed numerous expansions and technical projects of up to \$900M in scope. Mr. Lee's most recent position was Operations Manager for Minera Panama SA developing one of the worlds largest green fields copper deposits. Before Minera Panama Prior he was Vice President Technical Services at Freeport – McMoran where he worked for 10 years based in the Philippines and finally Phoenix, Arizona.

Darin also worked for 12 years for Echo Bay Minerals Battle Mountain, Nevada as operations Manager.

Charles Barclay
Chief Technical Officer

Charles Barclay is a British mining veteran with more than forty years of international experience. Charles emigrated to South Africa in 1970 where he worked on three of the Witwatersrand mines being promoted to manager. In 1990 he accepted the position, as Mine Manager with Emperor Mines where he converted the Vatukoula Mine back to an underground operation and then became General Manager/COO. He joined Olympus in 2006 as Country Manager, Vietnam, and later became Chief Operating Officer. As Chief Operating Officer Charles commissioned two underground gold mines in central Vietnam; Bong Mieu in 2006 and Phuoc Son in 2011.

Paul Seton
Chief Commercial Officer

Paul Seton has been involved in Vietnam related investment and resources since 1991. A former resident of Hanoi as executive director for NZ listed Iddison Group Vietnam Limited, Mr Seton has been responsible for negotiating a number of investment and exploration or mining licences in Vietnam. He holds or has held directorships in and has been Chairman of a number of Vietnam licensed joint venture enterprises.

Jane Bell
Chief Financial Officer

Ms. Bell has over 25 years of experience in a range of corporate finance, regulation and governance disciplines both locally and internationally, more recently within the gold sector. Prior to being with Olympus Ms Bell was CFO of Zedex Minerals Limited an ASX listed gold explorer. Jane has in conjunction with her finance roles been the Company Secretary for several companies and has for 20 years served on or reported to corporate Boards. Ms Bell holds a Bachelor of Commerce degree from Lincoln University and obtained her CA designation with the NZ institute of Chartered Accountants in 1989.

Key management

Rod Murfitt
Group Exploration Manager

Mr. Murfitt is a geologist with more than 31 years mineral exploration and mining experience in southwest Pacific and Southeast Asian countries. Mr. Murfitt holds a Bachelor of Science (Geology) from University of Auckland, New Zealand and is a long standing member of the Australasian Institute of Mining and Metallurgy. He has held senior management roles with a number of exploration, mining and consultant companies in New Zealand and Australia. Rod was initially responsible for leading the exploration teams that brought the Bong Mieu and Phuoc Son properties from discovery through advanced exploration up to development stage. Rod has been leading teams on other major exploration projects, including the Bau Gold Project in Sarawak, which is now similarly reaching preliminary mining assessment stage.

Graeme Fulton
Bau Project Engineer

Mr. Graeme Fulton (BSc Hons Mining and Petroleum Engineering) has more than 20 years experience in mining and information systems. He has worked for French-Kier on their Benbain Opencast coal mine (UK); Anglo American Corporation at Vaal Reefs Gold Mine, Premier Diamond Mine and Springbok Colliery in South Africa; and as Senior Mining Engineer for Avgold on the development of a new deep-level gold mine target. He has extensive experience in mining information systems, having worked at Andersen Consulting, Intertech Systems and Datamine on information systems for mining, petroleum and manufacturing companies as well as mining software development, GIS and mapping. Additionally, he has extensive experience in geological, mining and quarrying consultancy projects over a wide range of minerals and deposits both locally and internationally.

Erik Devuyst
Chief Metallurgist

Dr. Erik Devuyst received his Ph.D in Hydro metallurgy in 1973 and his post doctorate; Insoluble Anodes in 1975. He joined Inco and later became Manager, Vice President of Inco's Tech Cyanide Destruction Business responsible for test work, engineering and commissioning over 80 cyanide destruction plants worldwide for the gold industry.

Noel Mejia
Group Plant Manager

A professional metallurgical engineer with 18 years' work experience in gold and base metal mining industries with Olympus Pacific Minerals Vietnam, Goldcorp Ltd, Vale Inco and XStrata. Member of the Professional Engineers Ontario, Canada, (PEO) association since 1998. Managed project teams to execute construction of capital and operating mill projects, including ramp-up and commissioning. Expertise in process engineering, grinding circuit optimization, experienced in process control, material balance, Met Expert System, statistical analysis and developing process models. Geotechnical background with knowledge in soil mechanics, hydrology and water chemistry.

Dale Burgess
Operations Manager Mining

Dale received a Graduate Diploma of Mining from Ballarat University and since then he has dedicated his career to the mining profession. Mr. Burgess has held several key positions during his career most recently as Mine Manager for the Great Australia Mine, Cloncurry, Queensland. He is an professional operational manager who has extensive experience in planning, scheduling, and managing underground mining teams. Dale has impeccable mine safety record spanning his 23 years in the industry.

Share Structure

August 31, 2012

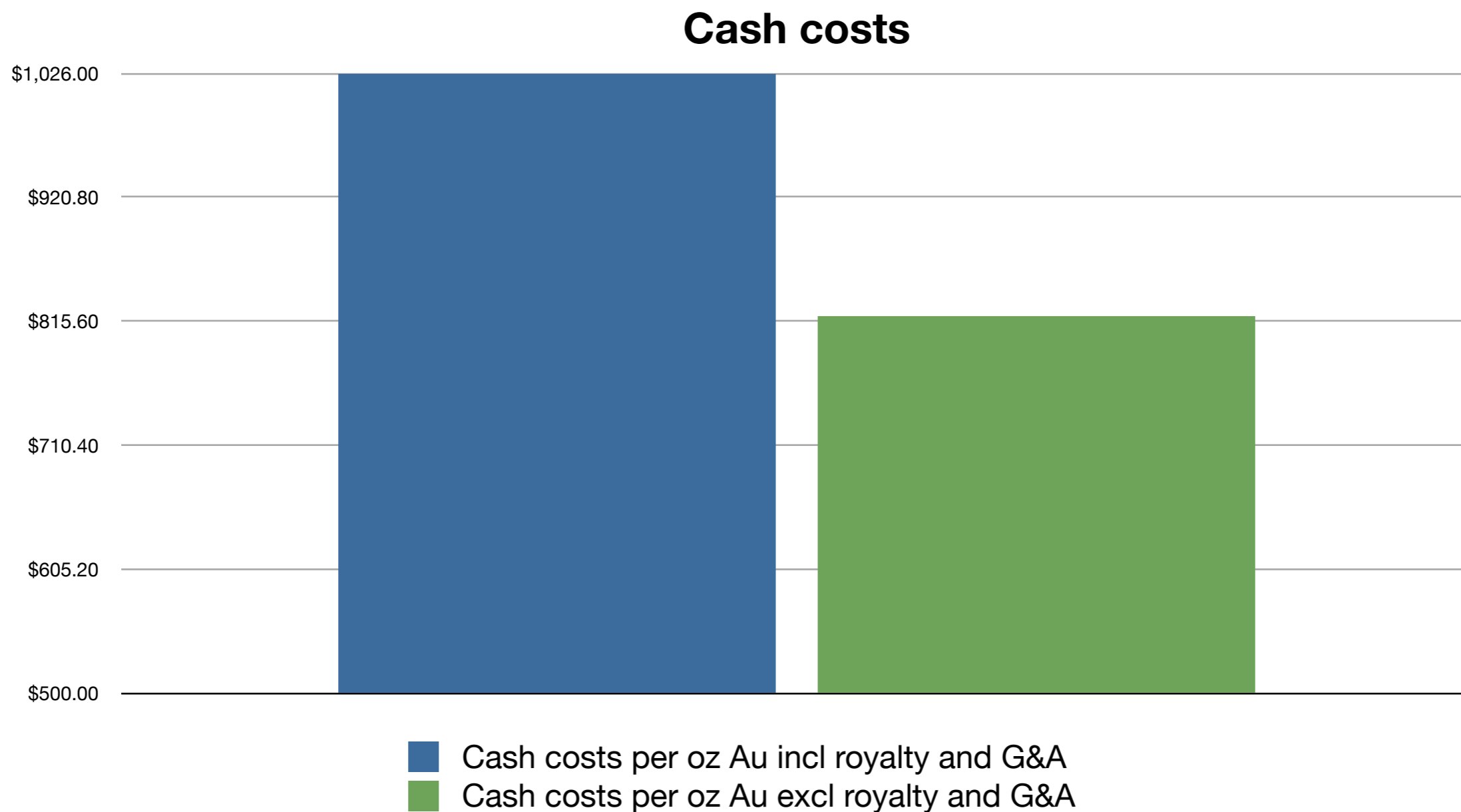
	On issue	As converted
Common Shares	378,781,186	378,781,186
Warrants & Options	77,641,666	101,454,971
Convertible Notes	42,309,942	81,712,972
Fully Diluted		561,949,129

Loans & debt

Convertible Notes	Issued	Maturity	Interest	Units	Face Value CAD	Face Value USD	Conversion	Shares on Conversion
9% CAD Notes	May 26, 2010	May 26, 2014	9%	12,709,942	10,676,355		C\$0.42	25,419,893
8% CAD Notes	April 29, 2011	April 29, 2015	8%	150	15,000,000		C\$0.5	30,000,000
8% USD Notes	May 6, 2011	May 26, 2015	8%	14,600,000		14,600,000	US \$0.51	28,627,451
Gold Loan	Delivery ounces	Principal value of delivery	Principal Balance					
Nov/30/2012	3900	US \$4,680,000	US \$4,680,000					
May/31/2013	3900	US \$4,680,000	US \$0					

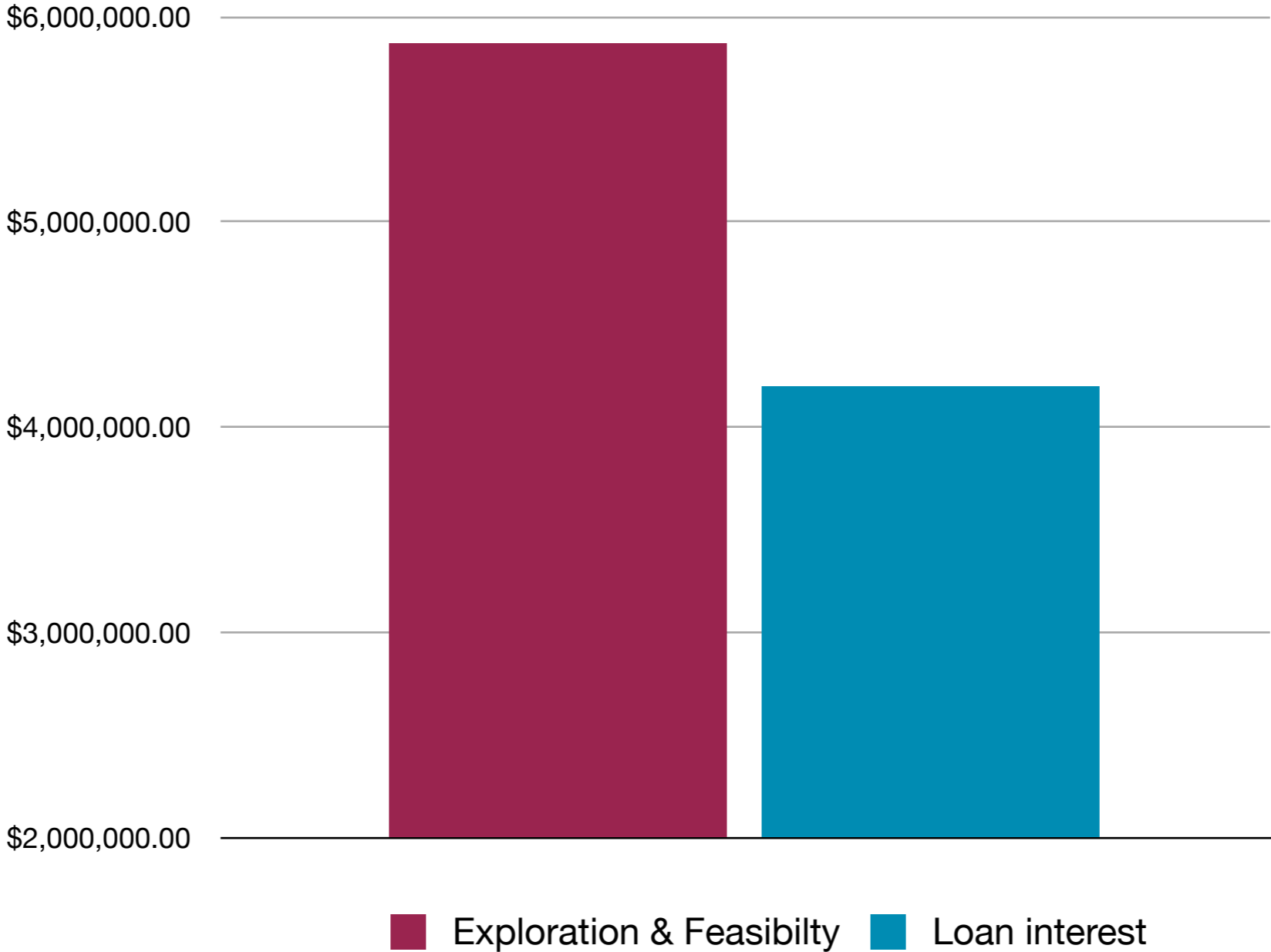
Cash Costs FY 2013

Figures in US\$



Expenditures FY 2013

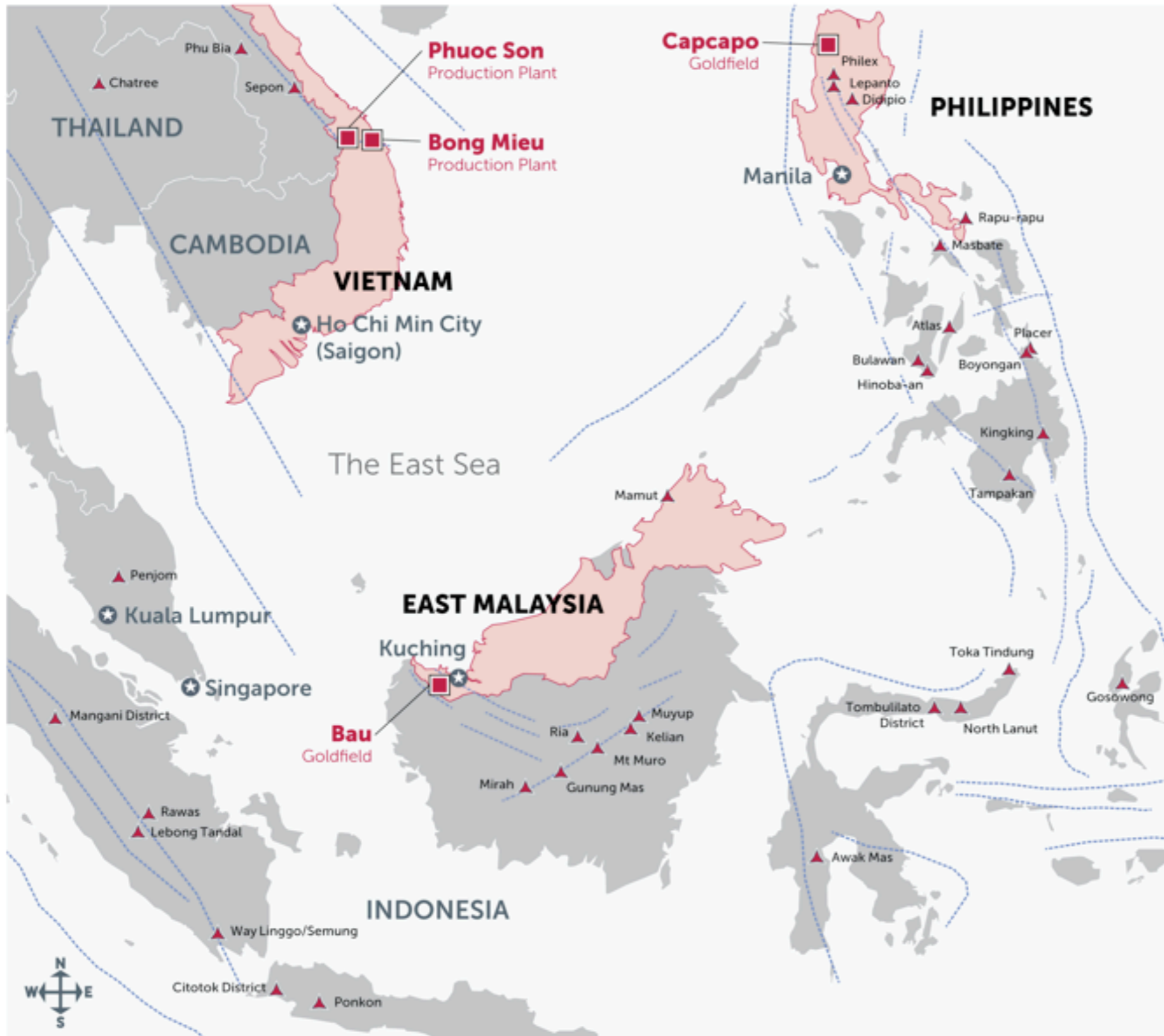
Figures are US\$



Note: Gold loan is to be repaid in two deliveries of 3,900 oz. One on November 30, 2012 and the remaining deliverly on May 31, 2013.

Cash on hand - US\$4.7M (Cash & Gold Equivalent)





Operations

Past, Present & Future

Production

- Built two gold mines in Vietnam
- Production – 60,000 oz June 30, 2013 (est)
- Production – 70,000 oz June 30, 2014 (est)

Exploration

- Bau (E Malaysia) – 3 M oz NI 43-101/JORC
- Vietnam – 1.5M oz NI 43-101/JORC
- Philippines – 94 m @ 1.5 g/t Au, 0.3% Cu

Feasibility

- Feasibility for E. Malaysia (Bau project)

Resources (Ounces of Gold)

Ounces of Gold

5000000

4000000

3000000

2000000

1000000

0

2006

2007

2008

2009

2010

2011

2012

 M&I

 Inferred

March 2012

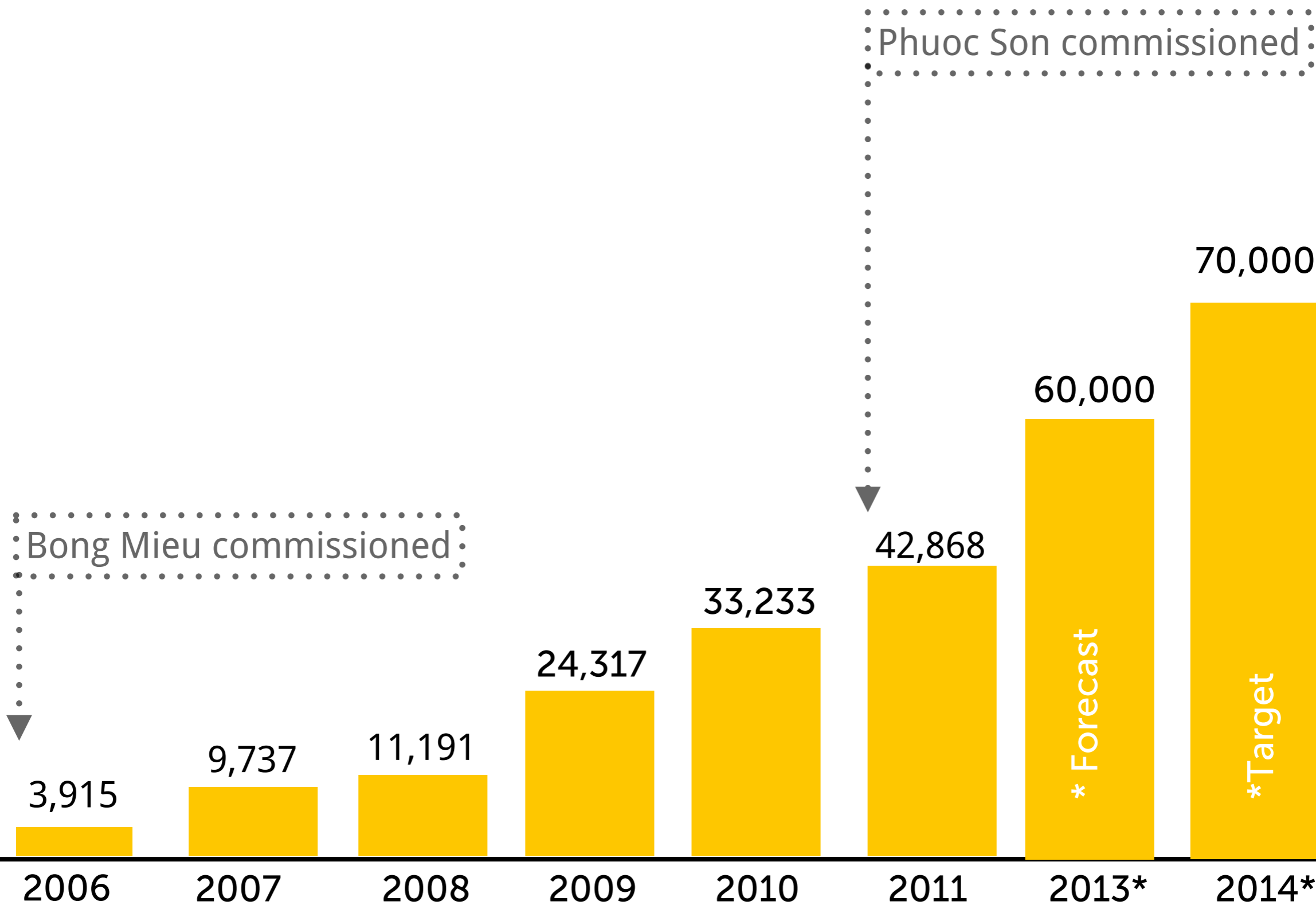
NI 43-101/JORC



OLYMPUS
PACIFIC MINERALS

13

Gold Production (in ounces)



Production oz are based on CY from 2006 until 2011.

Production forecast 2013 & 2014 based on FY June 30th.





Phuoc Son gold mine



Resources & Reserves

March 30, 2012

Phuoc Son Reserves				
	Category	2012 Q 1 Residual Reserves		
		Tonnes (t)	Grade (g/t) Au	oz (Gold)
Bai Dat	Proven	21,902	13.46	9,479
	Probable	208,719	5.82	39,053
Bai Go	Proven	150,082	5.98	28,874
	Probable	350,301	5.75	64,789
Total	Total P&P	1,731,004	6.05	142,195
Phuoc Son Resources				
	Category	2012 Q 1 Residual Resources		
		Tonnes (t)	Grade (g/t) Au	oz (Gold)
Bai Dat	Measured	21,902	13.46	9,479
	Indicated	120,948	13.23	51,437
	Inferred	125,095	5.31	21,474
Bai Go	Measured	98,322	8.90	28,122
	Indicated	299,468	7.50	72,256
	Inferred	2,330,575	6.00	449,749
Phuoc Son Total				
	Measured	120,234	9.73	37,601
	Indicated	420,415	9.15	123,693
	M&I	540,649	9.28	161,294
	Inferred	2,456,269	5.97	471,223

Tectonic Map

Sepon Resources

as at 30 June 2011

1.5 million tonnes copper

4.6 million ounces gold

22.1 million ounces silver

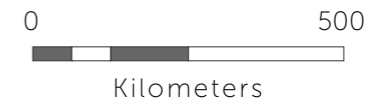
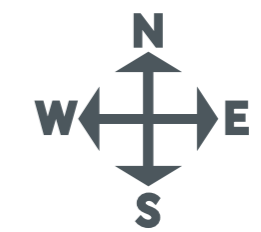
Sepon Reserves

as at 30 June 2011








0.7 million tonnes copper

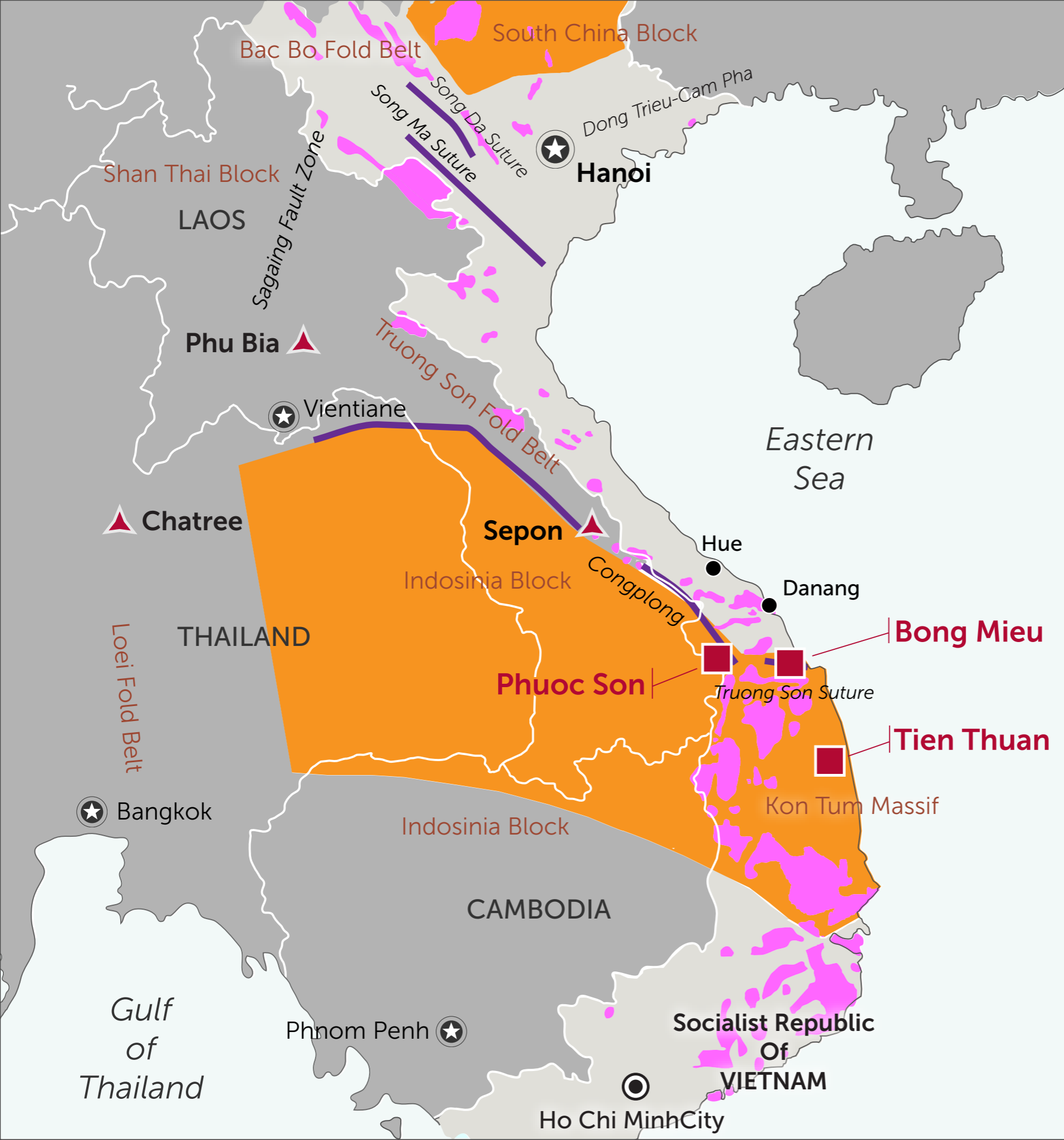
0.9 million ounces silver

0.2 million ounces gold



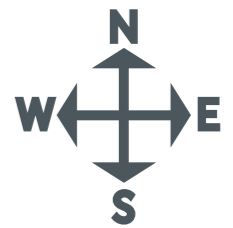
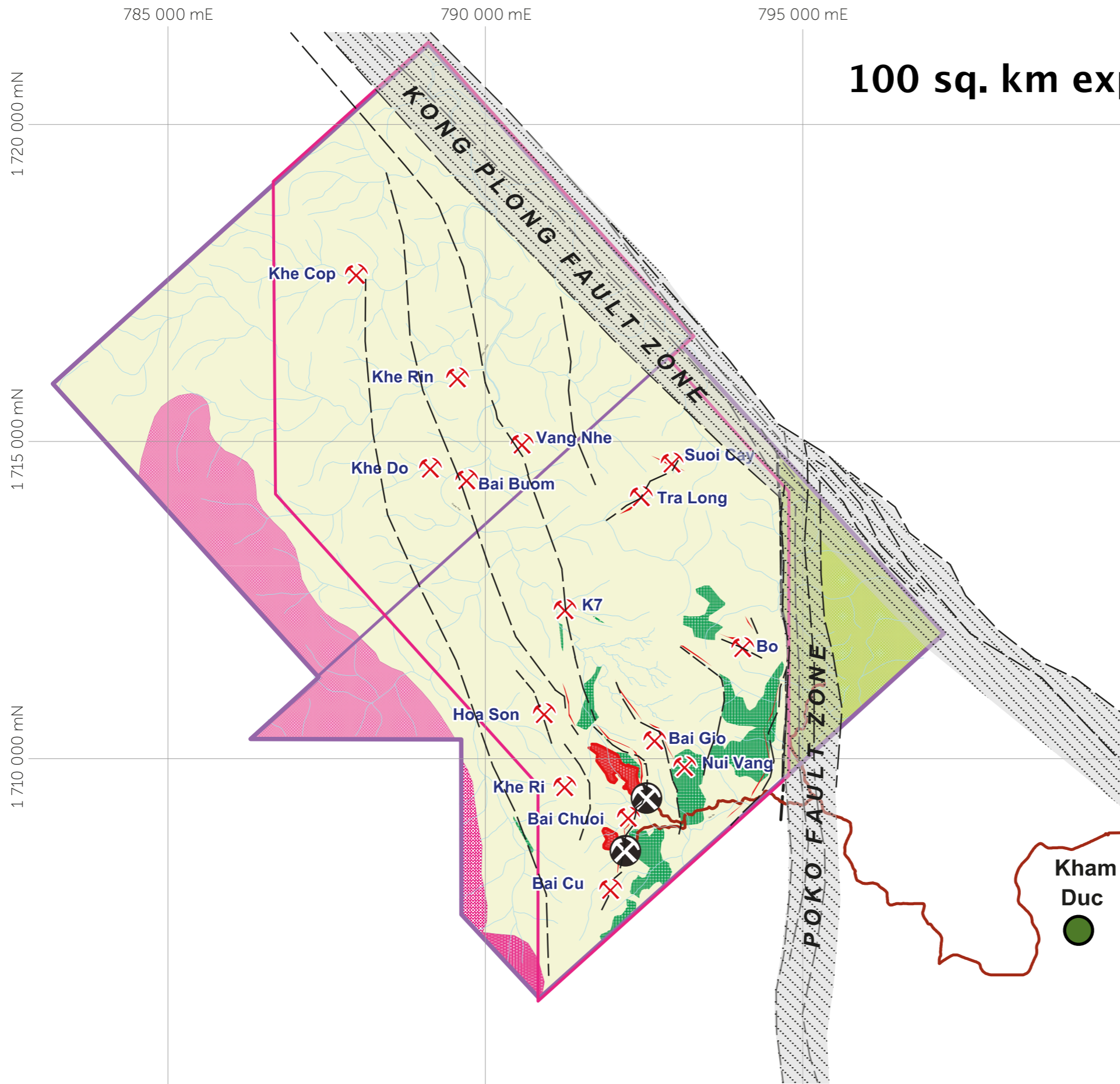
Legend

-  Gold/Copper mine
-  Olympus property
-  Capital city
-  Precambrian Craton
-  Granite
-  Significant fault
-  Ophiolite belt



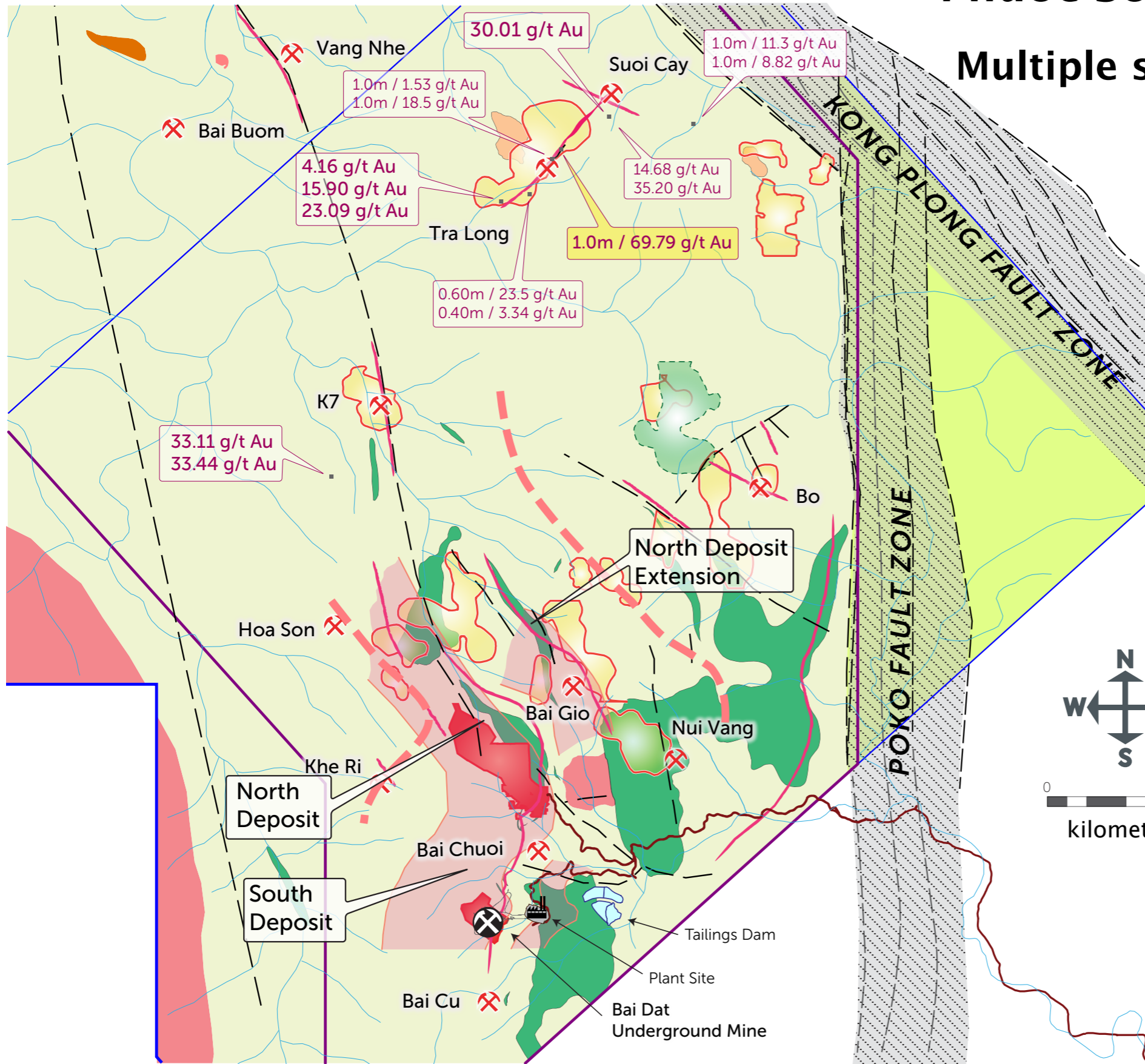
Phuoc Son

100 sq. km explored since 1997



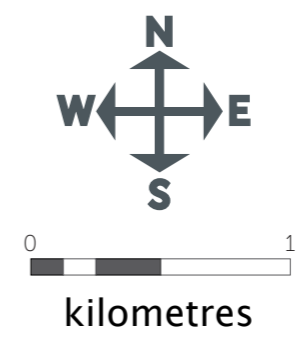
Phuoc Son Southern Region

Multiple stacked shear zones



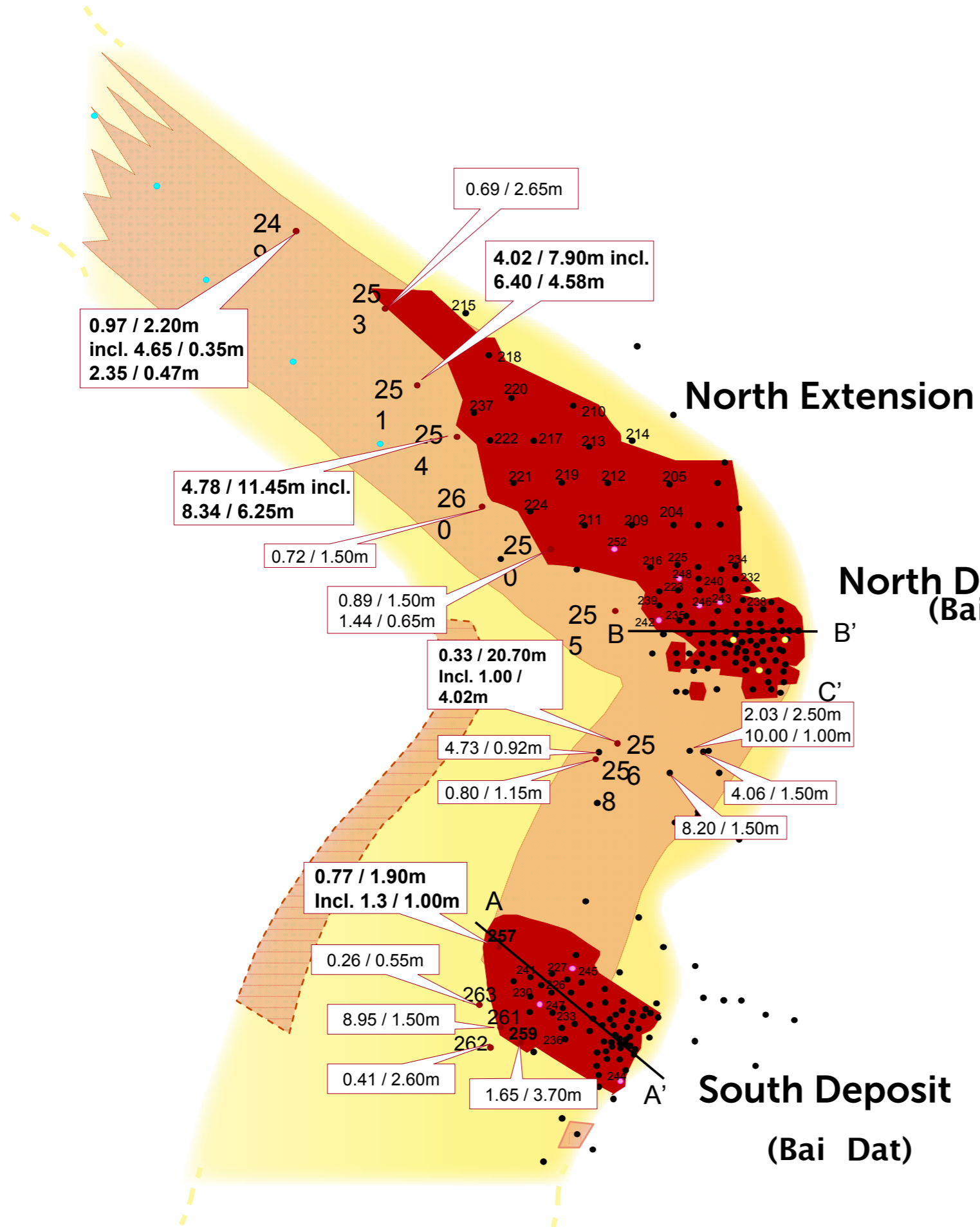
- Legend
- Investment licence
 - Exploration licence
 - ✕ Prospect
 - Quartz vein zone
 - Current resource
 - Mineralization trend
 - Gold anomaly in soil
 - Copper anomaly in soil

- Andesite, propylite andesite
- Actinolite-albite-chlorite schist
- Quartz-sericite-chlorite schist
- Talc-serpentinite green schist and meta gabbro
- Granite-diorite, diorite
- Granosynite
- Fault
- Road
- River / creek



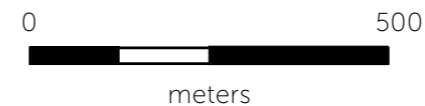
Dak Sa shear zone

North & South deposits



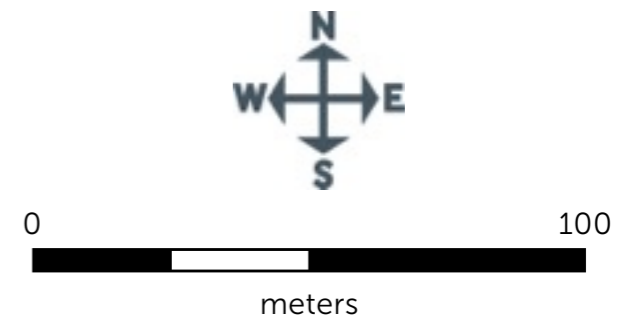
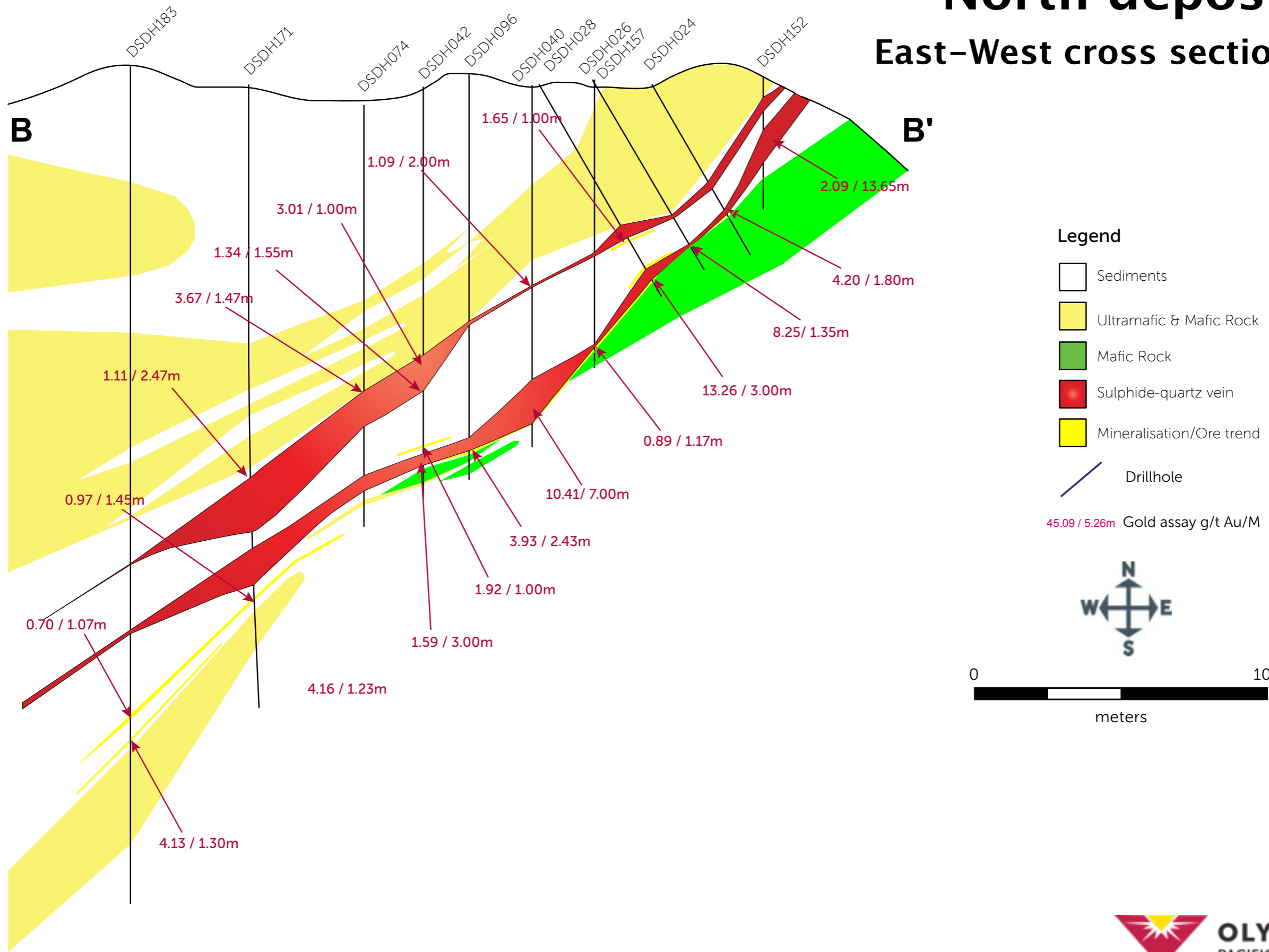
Legend

- Previous Hole ●
- Planned Hole ●
- Current Resource Boundary
- Indicated Trend
- Ore Trend



North deposit

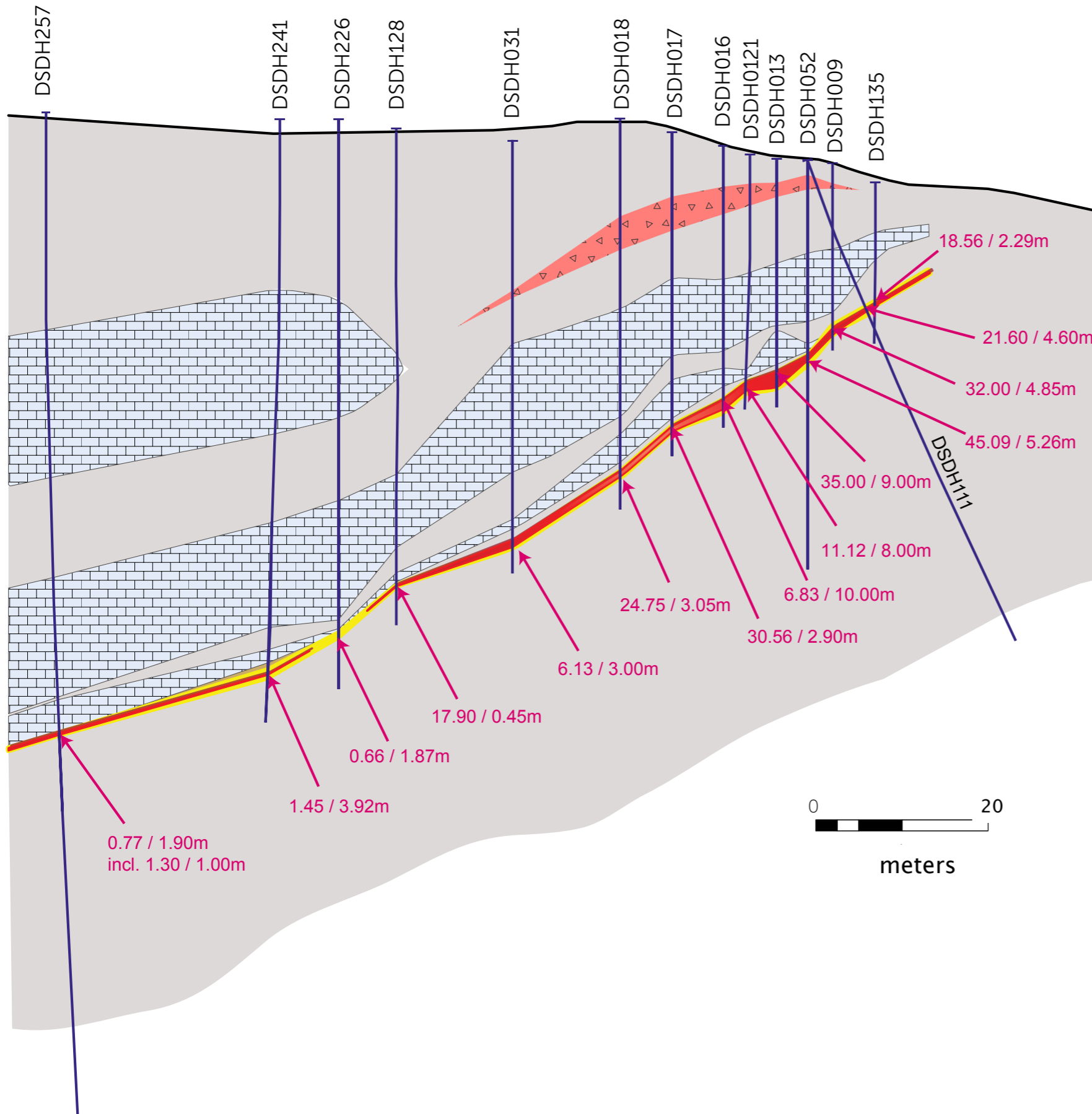
East-West cross section



South

Bai Dat Cross section

A NW SE A'



- Legend**
- Sediments
 - Marble
 - Breccia
 - Sulphide-quartz vein
 - Mineralization / ore envelope
 - Drill hole
 - 45.09 / 5.26m Gold assay g/t /m

Phuoc Son Mining Operations

South Deposit (Bai Dat)

- **Development commenced April 2007**
- **Production from June 2008**
- **Early production ore treated at Bong Mieu Mine**

North Deposit (Bai Go)

- **Development commenced May 2011**
- **Production from June 2012**

Process Plant

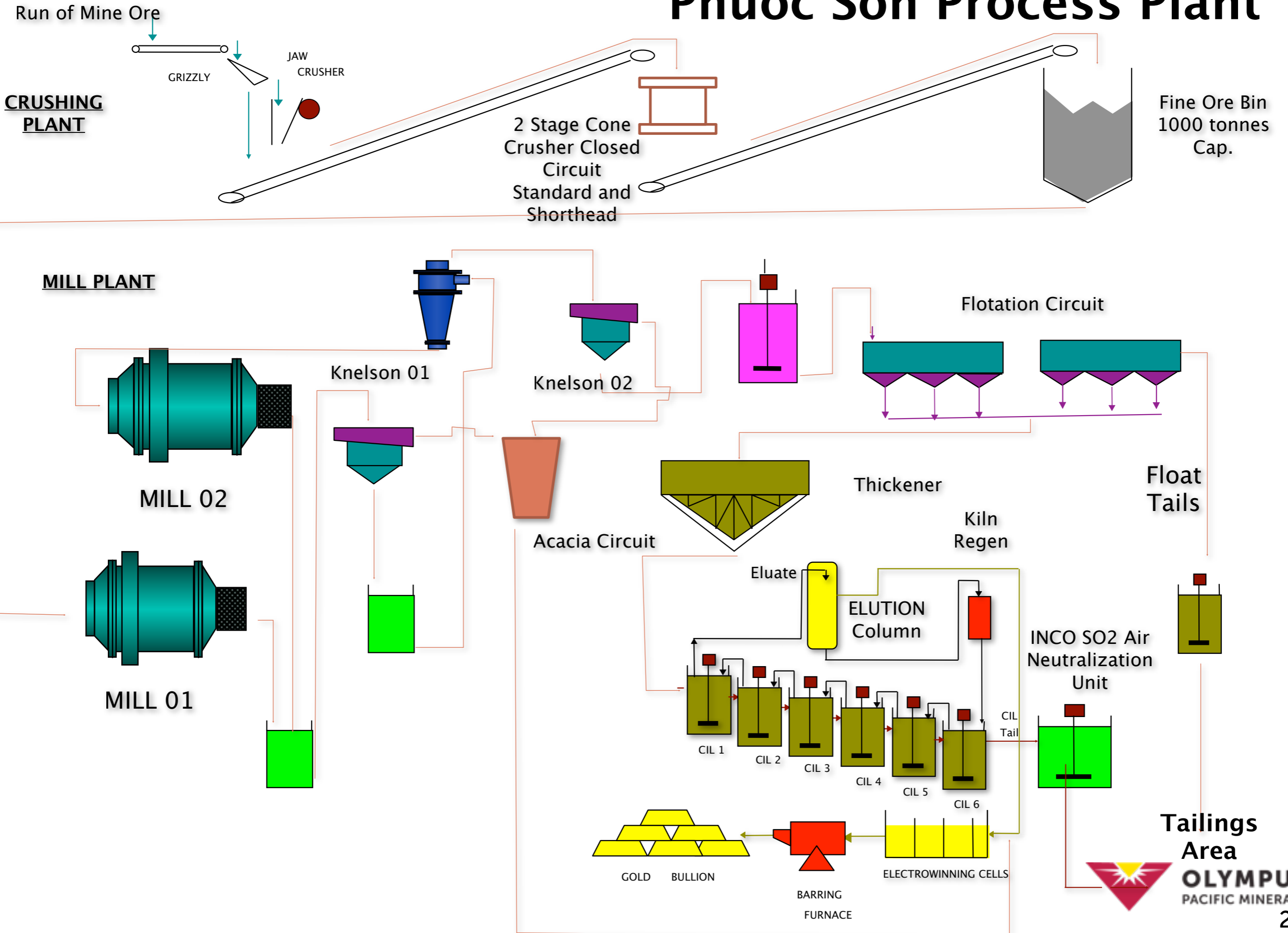
- **Construction commenced 2009**
- **Now operating to specification (92–95% recovery)**
- **First gold poured 2011**

Phuoc Son Process Plant

- Plant capacity designed for 1000 tpd
- Total produced ~ 128,400 oz
- Recovery 92–95% (70% gravity gold)



Phuoc Son Process Plant



Bong Mieu gold mine



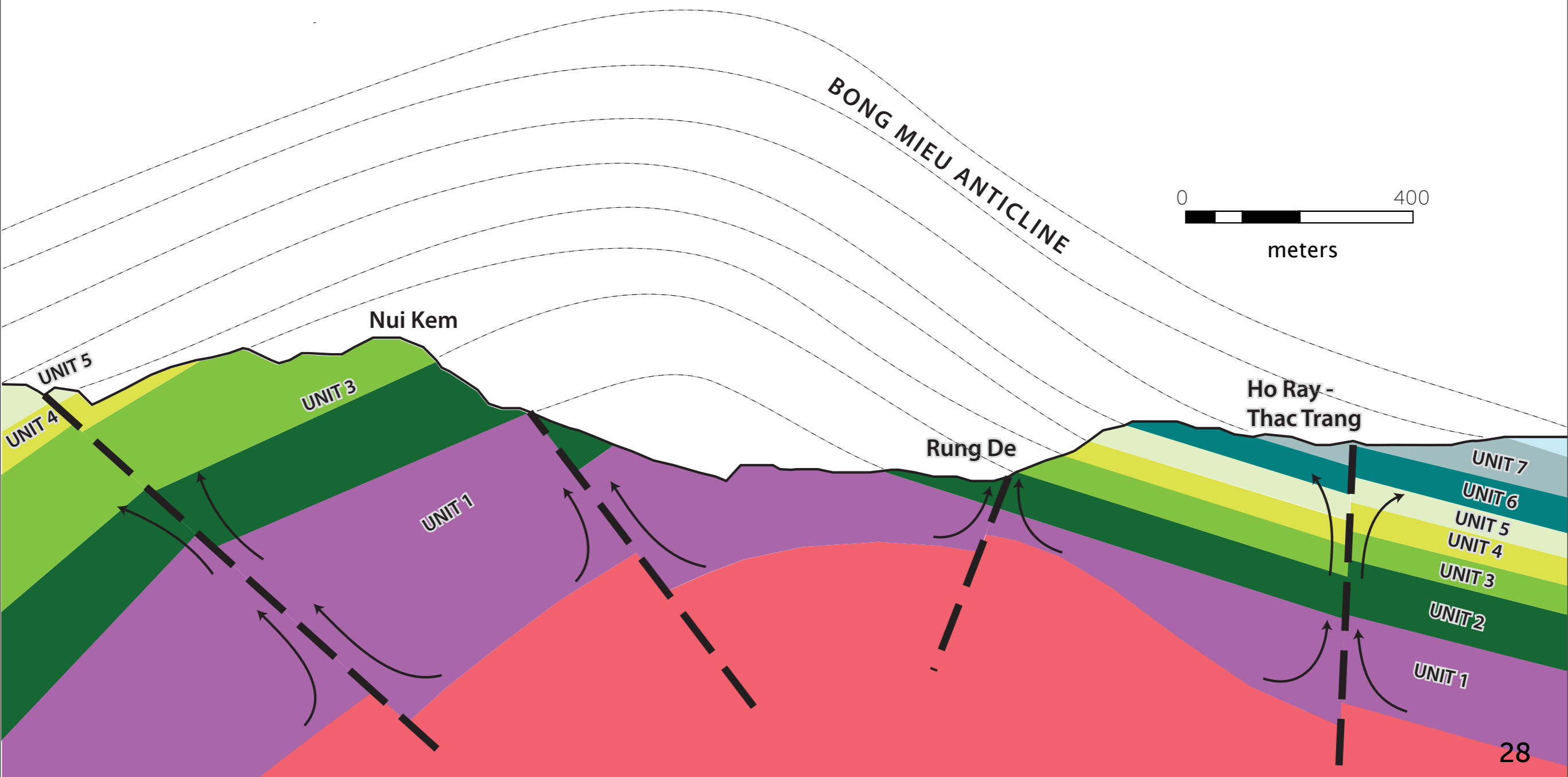
Resources & Reserves

March 30, 2012

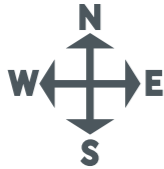
Bong Mieu Reserves & Resources				
Bong Mieu Reserves	Category	2012 Q 1 Residual Reserves		
		Tonnes (t)	Grade (g/t) Au	oz Au
Ho gan Open Pit	Proven			
Ho gan Open Pit	Probable	111,656	2.06	7,385
Total	Total P&P	111,656	2.06	7,385
Bong Mieu Resources				
Bong Mieu Resources	Category	2012 Q 1 Residual Resource		
		Tonnes (t)	Grade (g/t) Au	oz Au
Ho Gan	Measured	97,560	2.33	7,308
	Indicated	343,414	1.45	16,004
	Inferred	66,320	2.13	4,542
Ho Ray/ Thac Trang	Measured	940,100	1.92	57,730
	Indicated	2,153,900	1.47	101,797
	Inferred	4,885,600	1.38	216,764
*Other Metal Credits				
Ho Ray/ Thac Trang	Measured	Tungsten (as Au Equivalent)		37,908
	Indicated			69,793
	Inferred			97,779

Bong Mieu Anticline

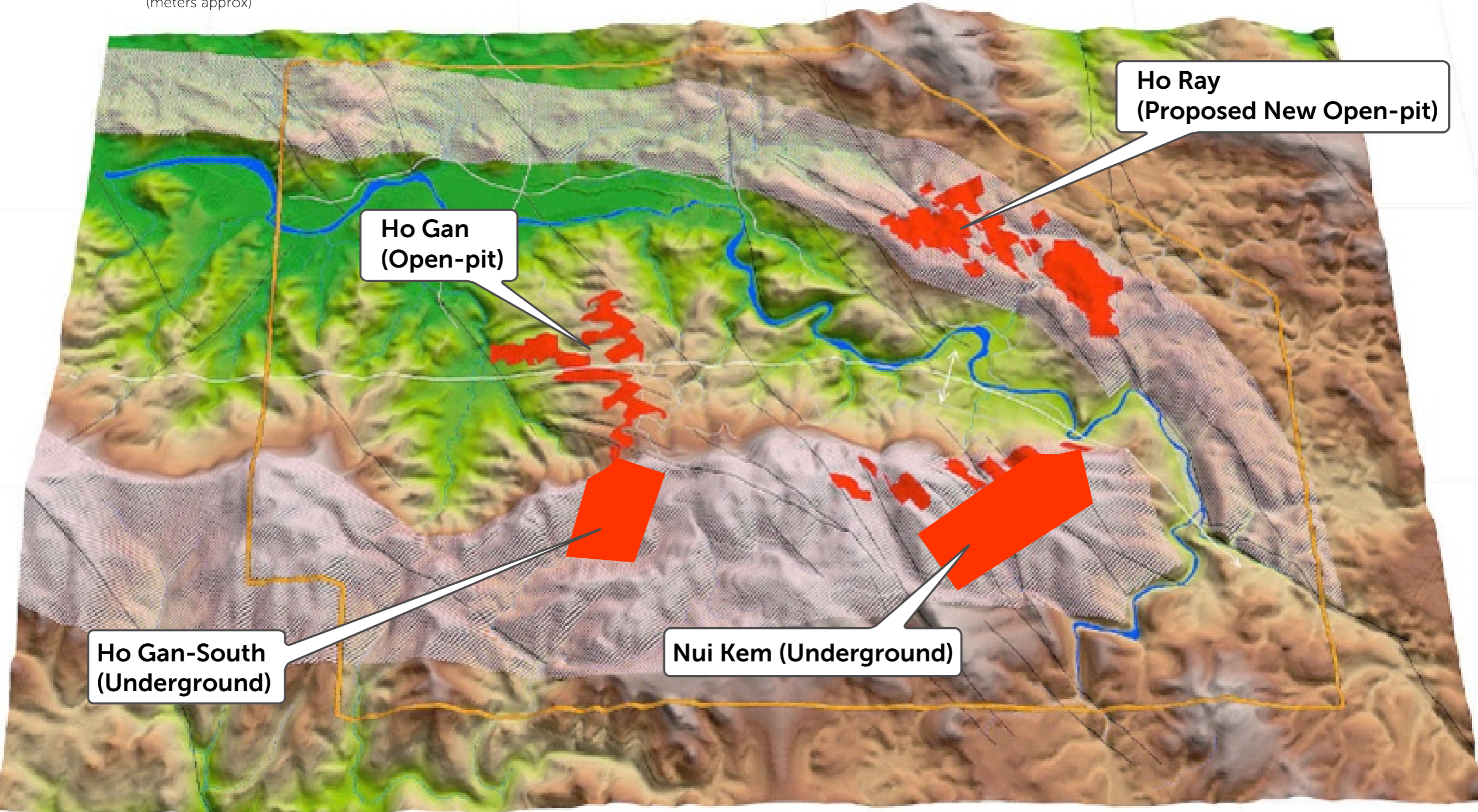
Section looking west



Bong Mieu



0 1000
(meters approx)



Ho Ray
(Proposed New Open-pit)

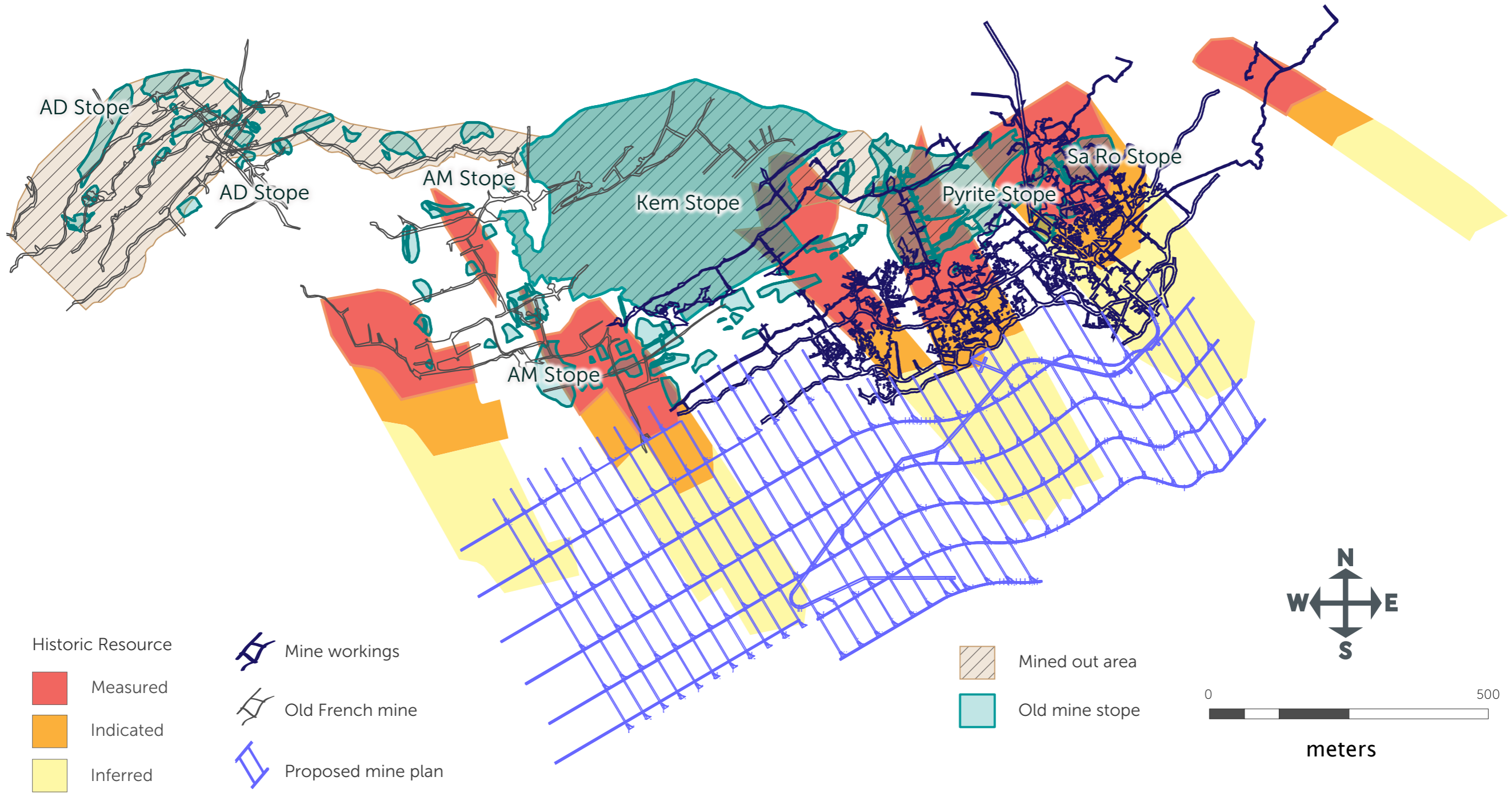
Ho Gan
(Open-pit)

Ho Gan-South
(Underground)

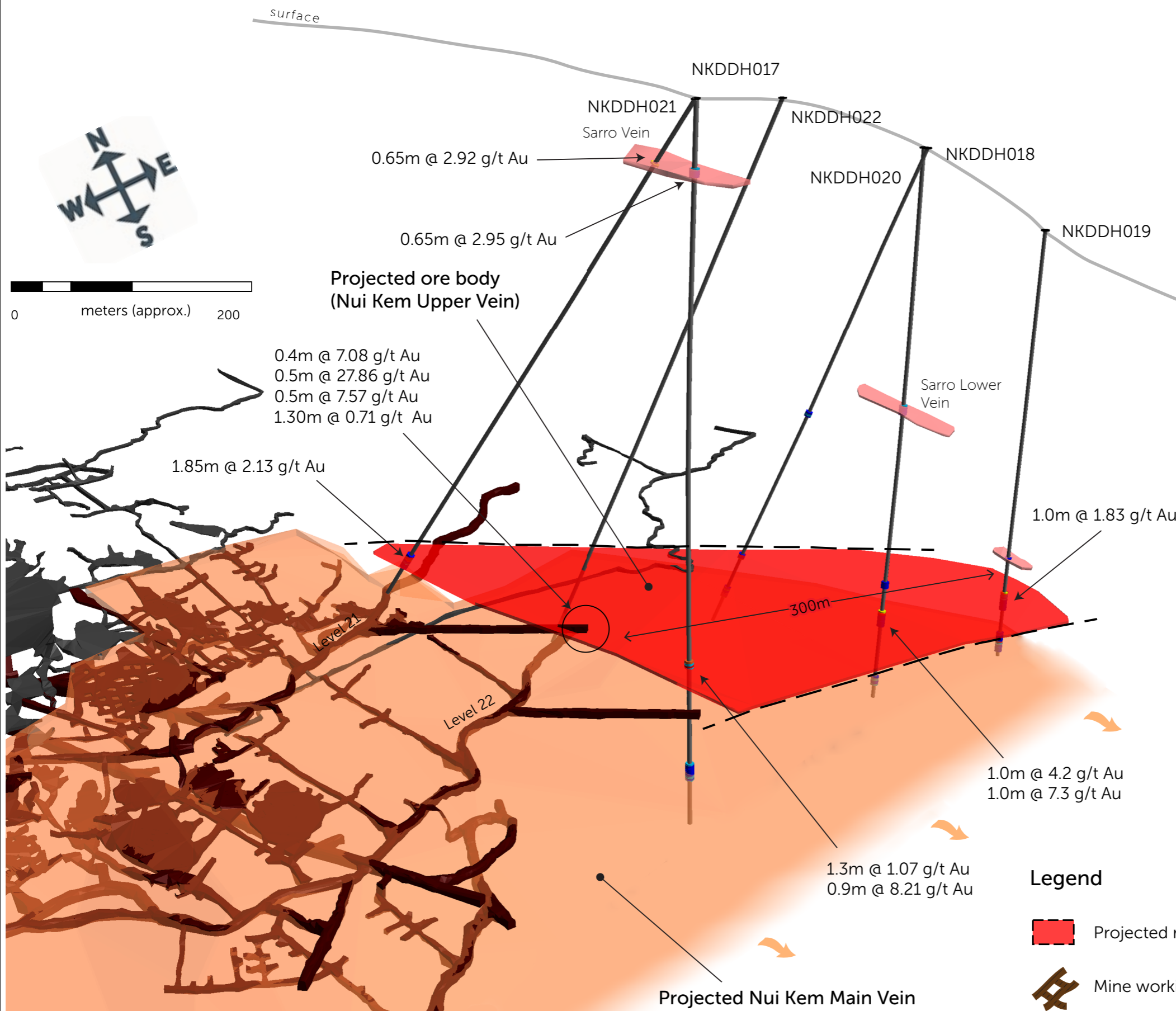
Nui Kem (Underground)



Nui Kem Main Vein



Nui Kem Upper vein

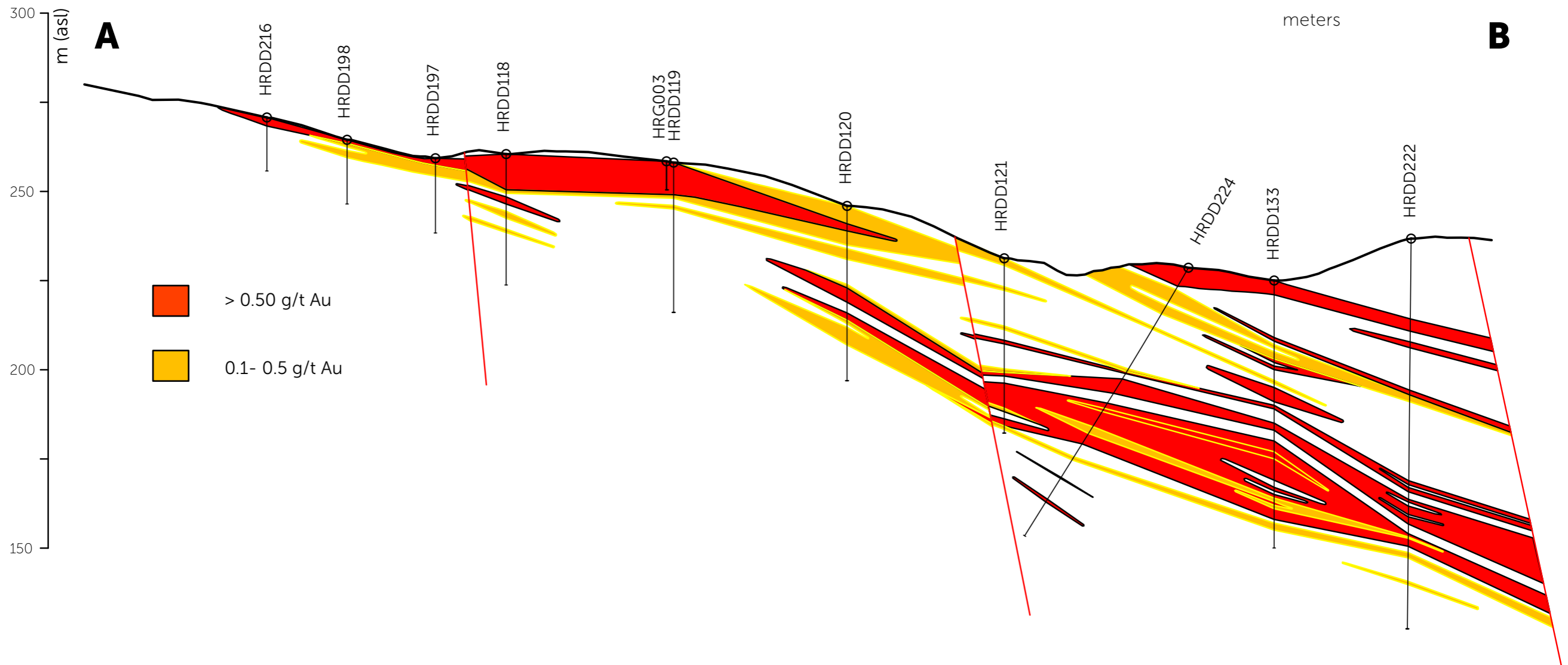


Legend

- Projected resource
- Mine workings

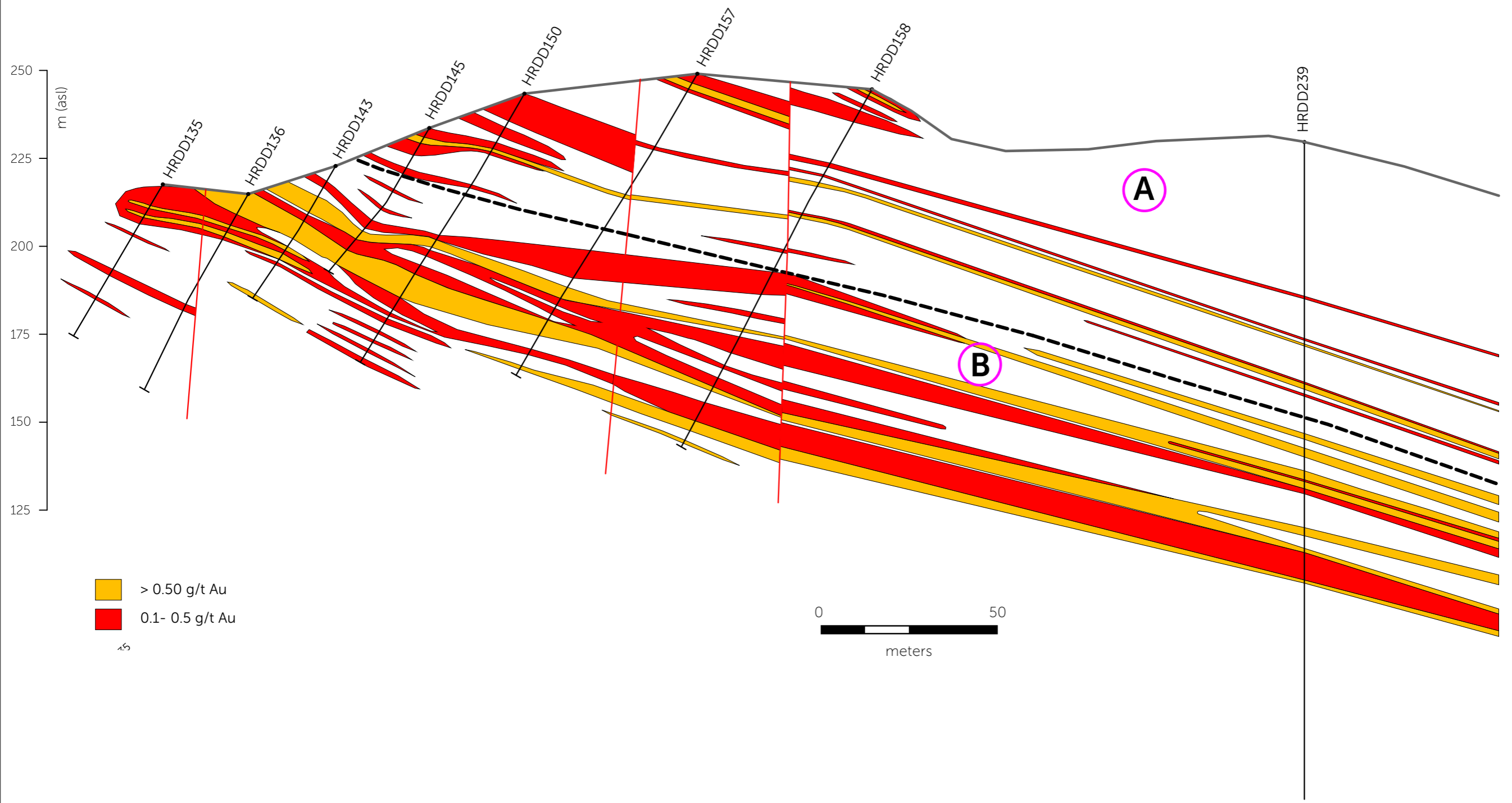
Ho Ray



Section SW-NE



Thac Trang

Section SW-NE



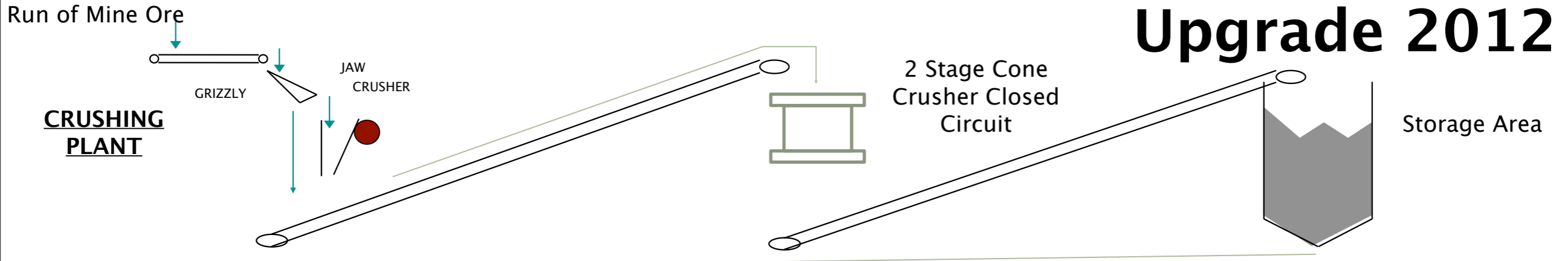
 > 0.50 g/t Au
 0.1- 0.5 g/t Au

0 50
meters

Bong Mieu Process Plant

- **Commissioned 2006**
- **Gold recovery – 83%**
- **Nominal throughput 500 tpd**
- **Conventional crush, grind, gravity, flotation & CIL**
- **Inco SO₂ air neutralization process**

Upgrade 2012



MILL PLANT

