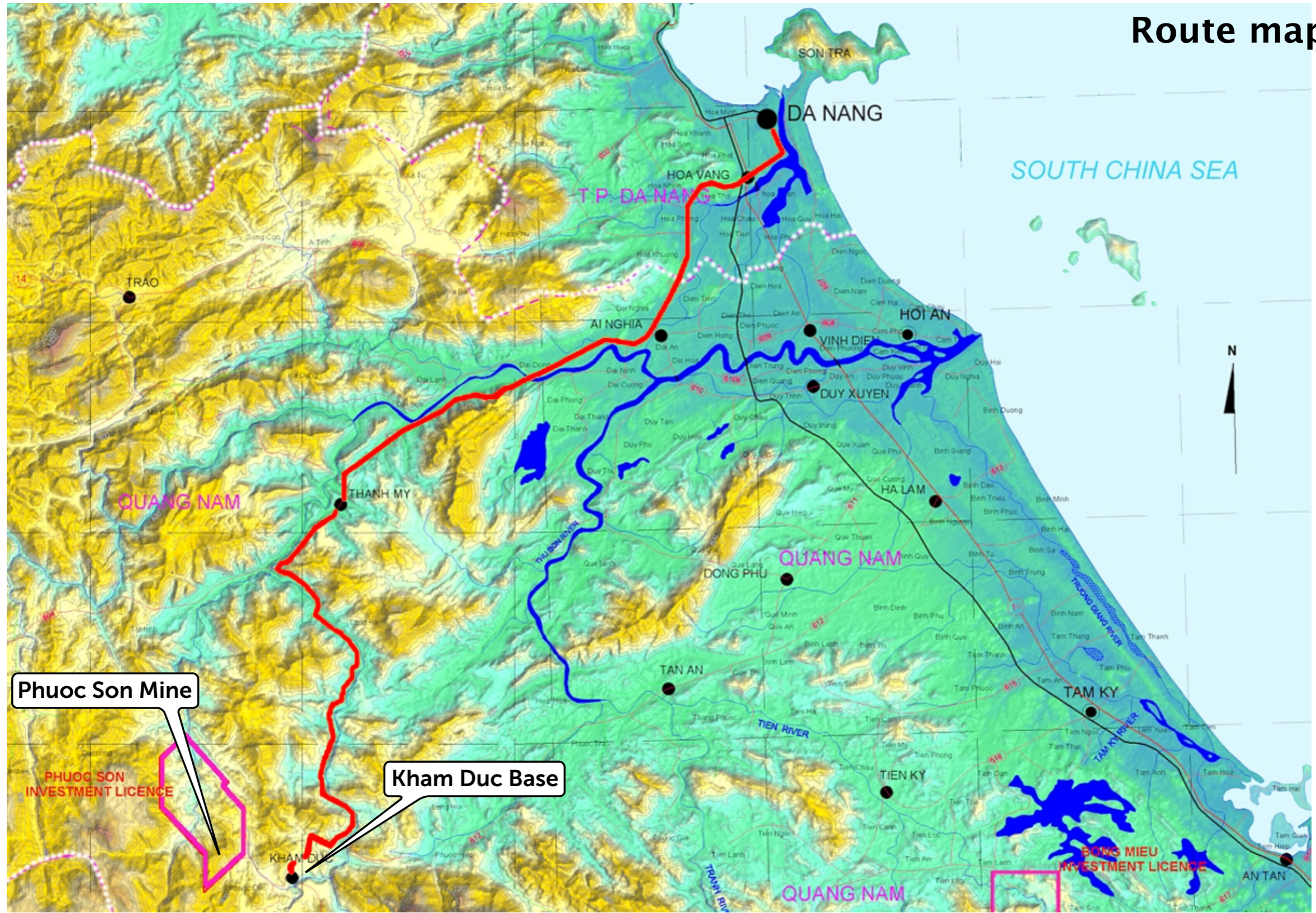




Phuoc Son gold mine



Phouc Son Route map



Phouc Son Mine








Kham Duc Base

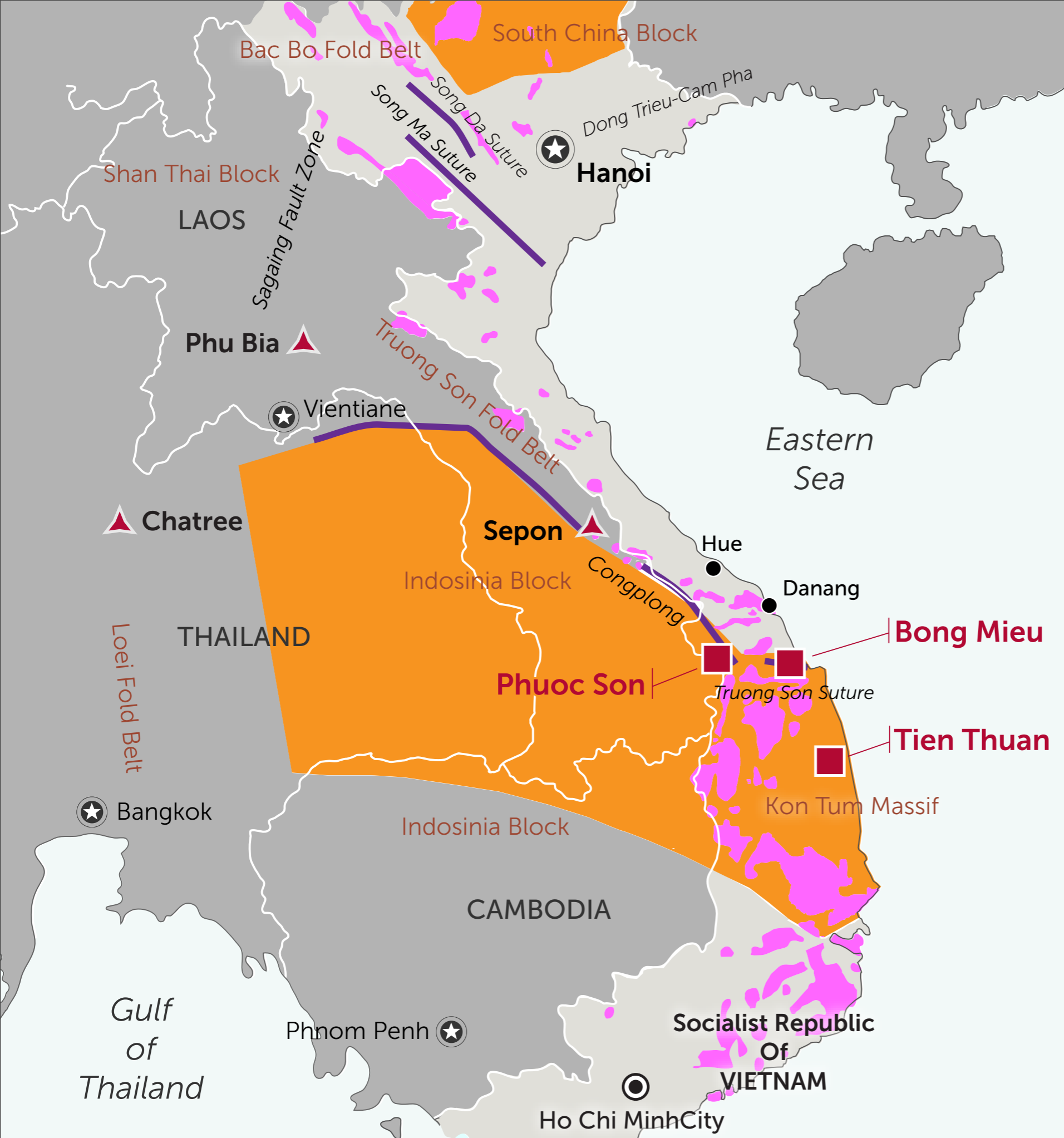


Tectonic Map Vietnam



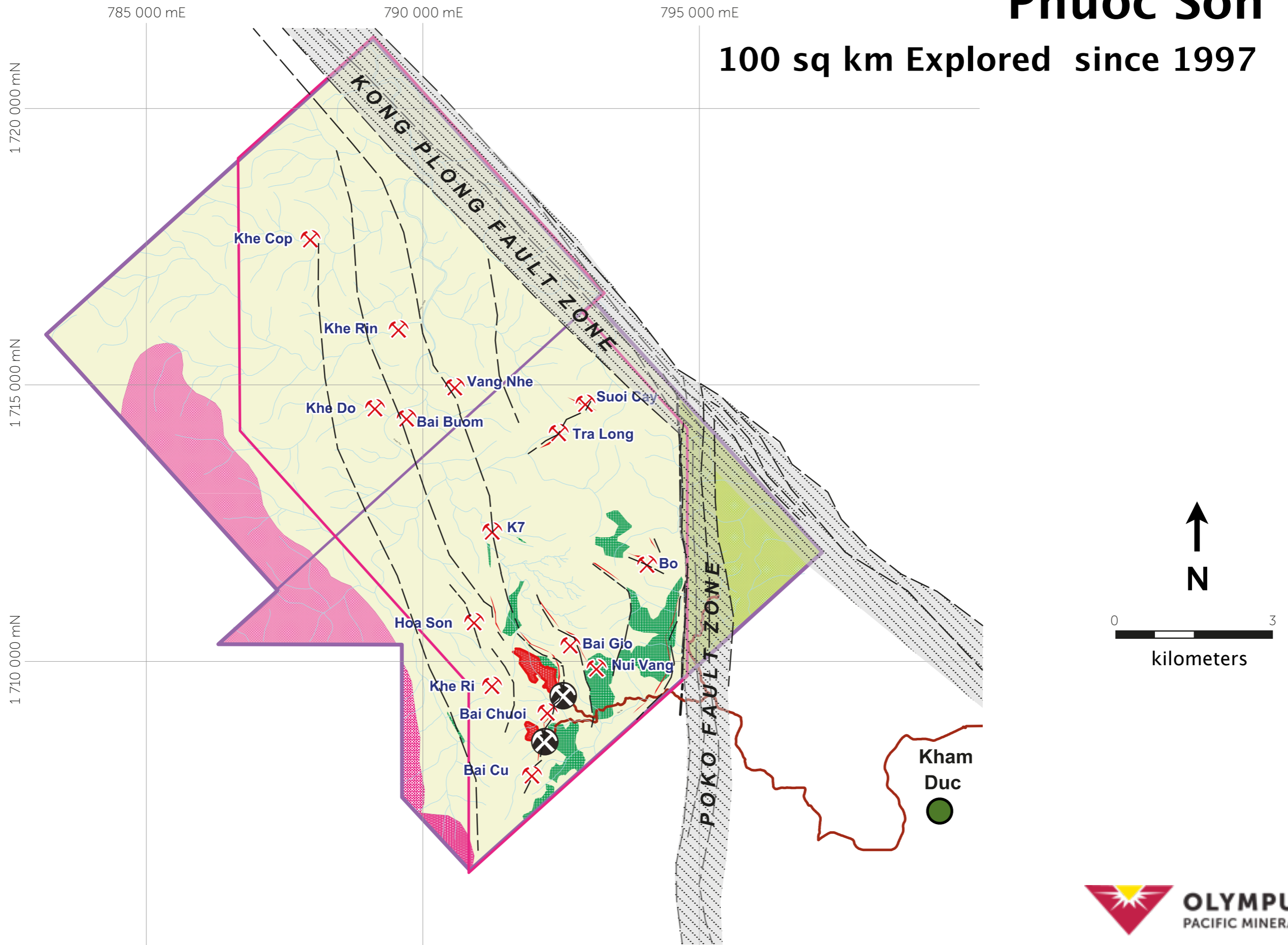
Legend

-  Gold/Copper mine
-  Olympus property
-  Capital city
-  Precambrian Craton
-  Granite
-  Significant fault
-  Ophiolite belt



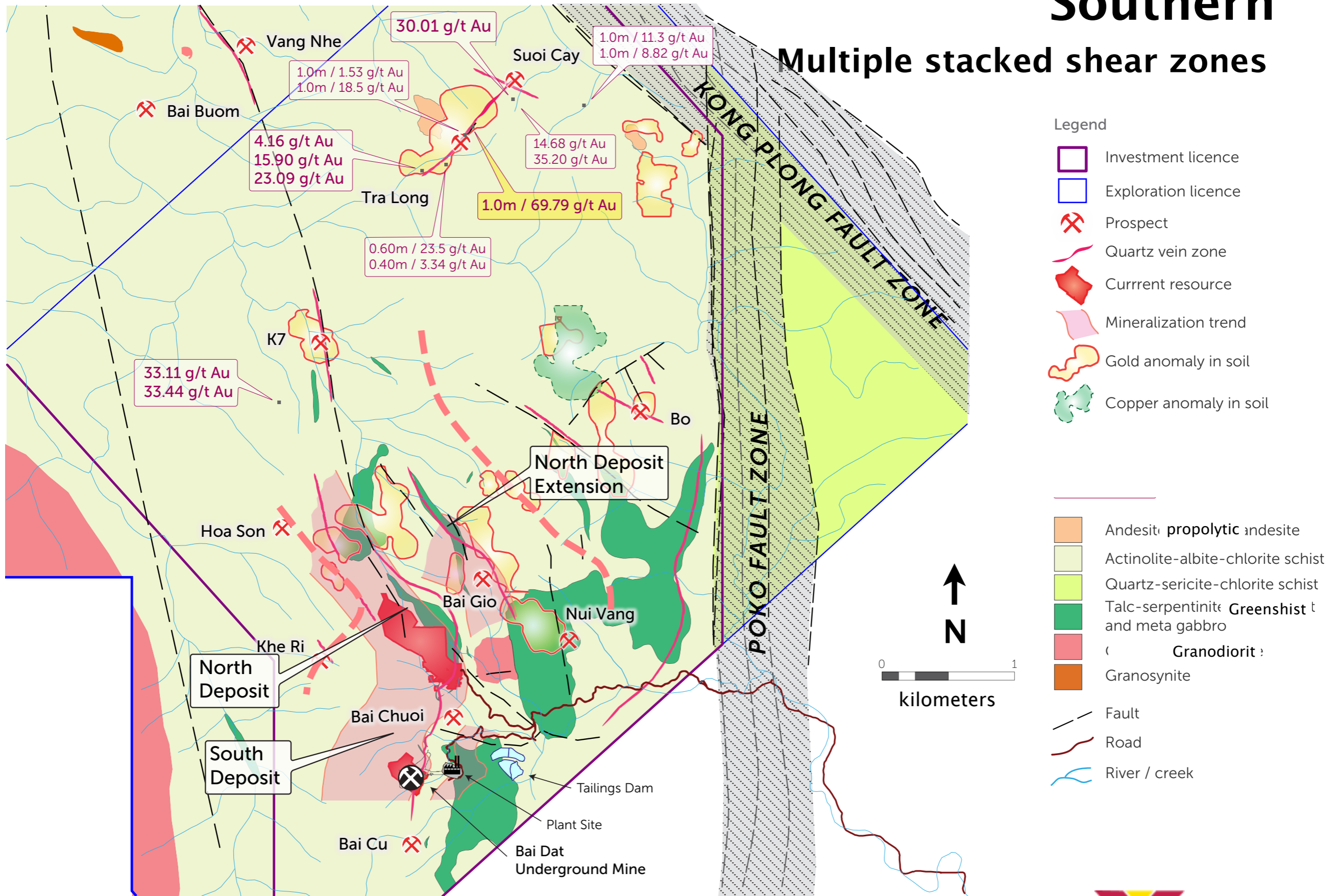
Phuoc Son

100 sq km Explored since 1997



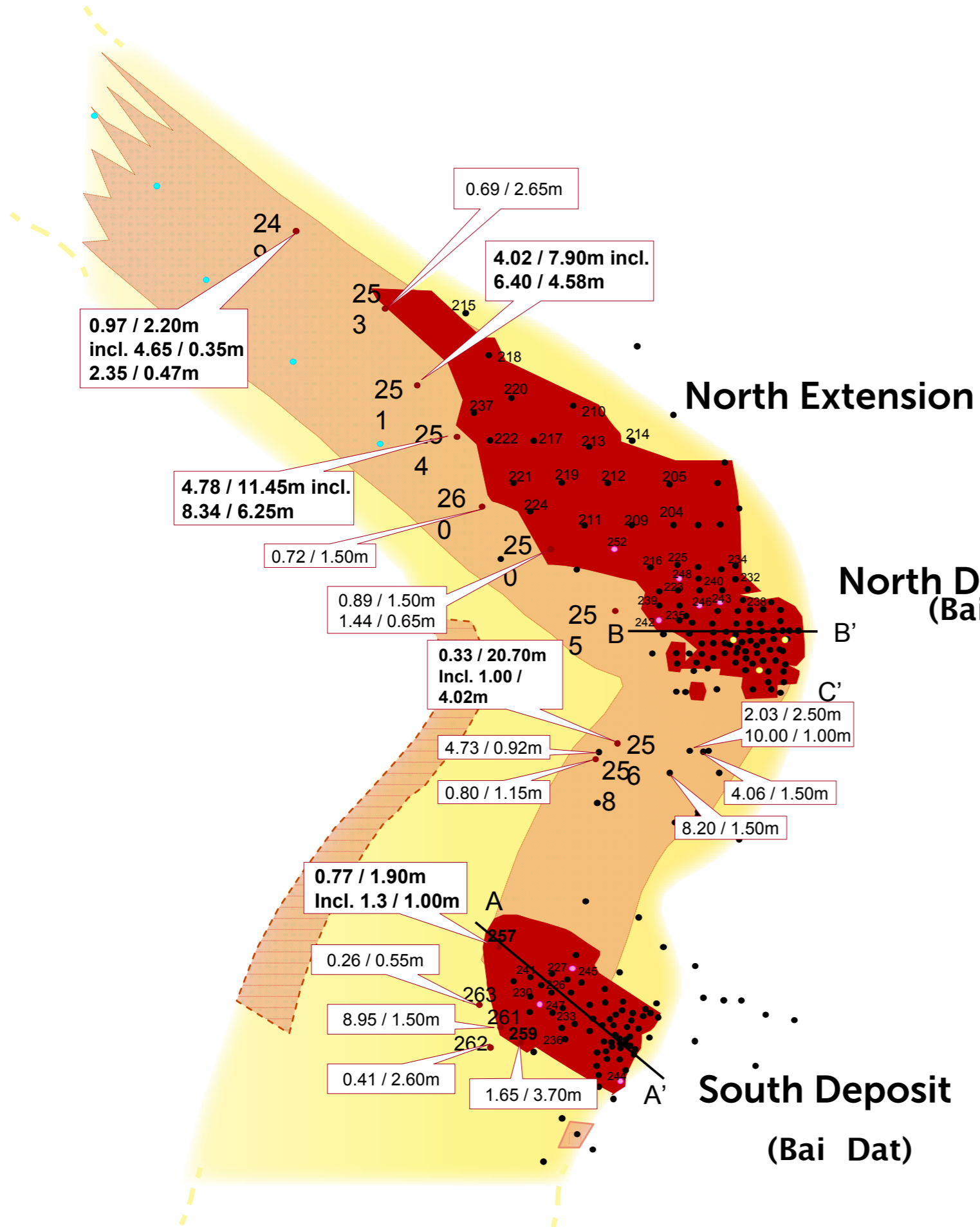
Southern

Multiple stacked shear zones



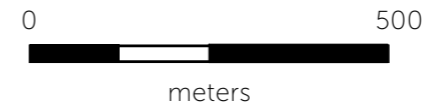
Dak Sa shear zone

North & South deposits



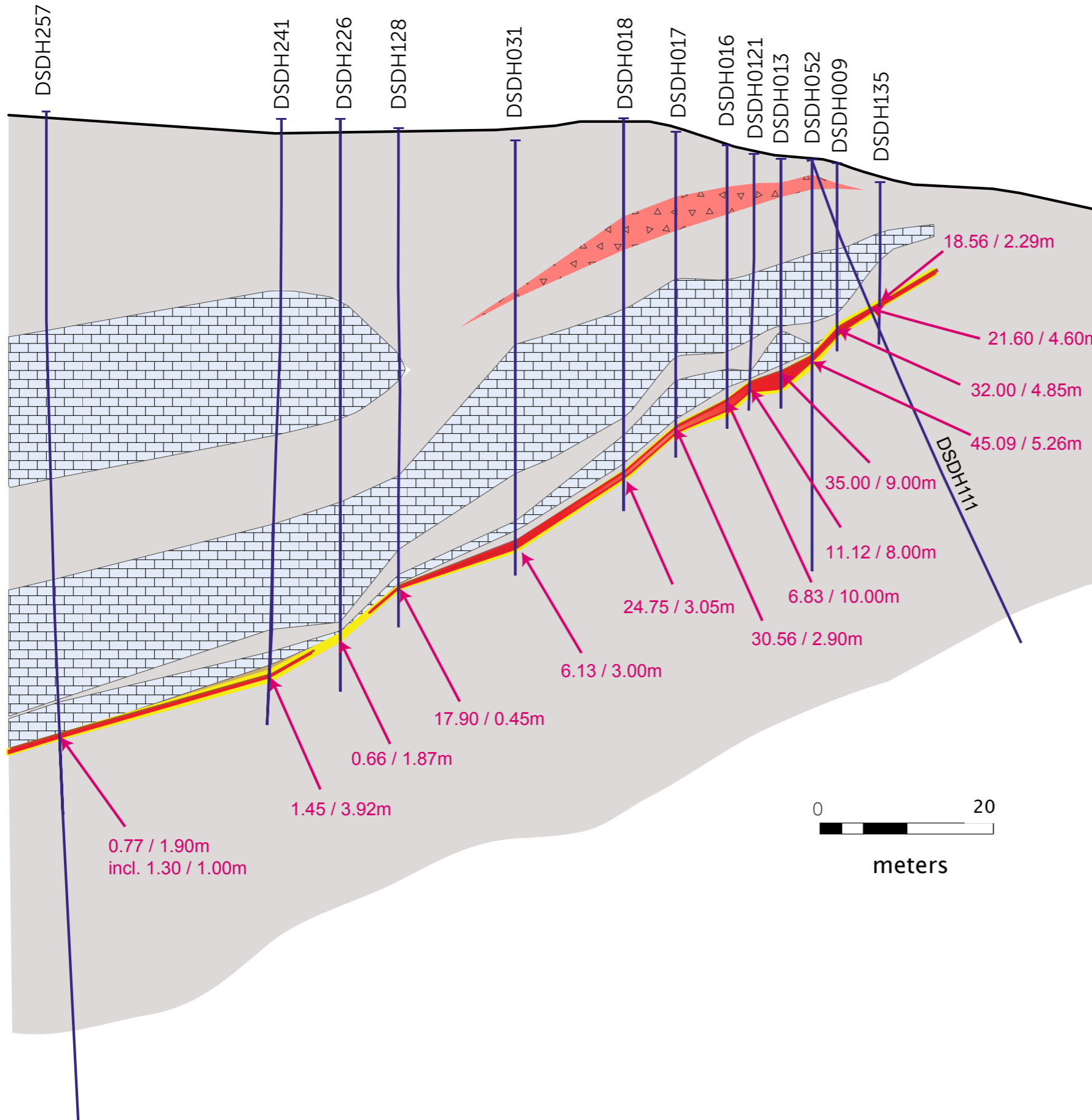
Legend

- Previous Hole ●
- Planned Hole ●
- Current Resource Boundary
- Indicated Trend
- Ore Trend

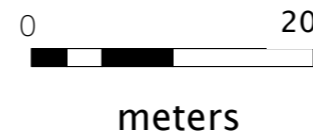


A NW

SE A' South deposit Bai Dat Cross section

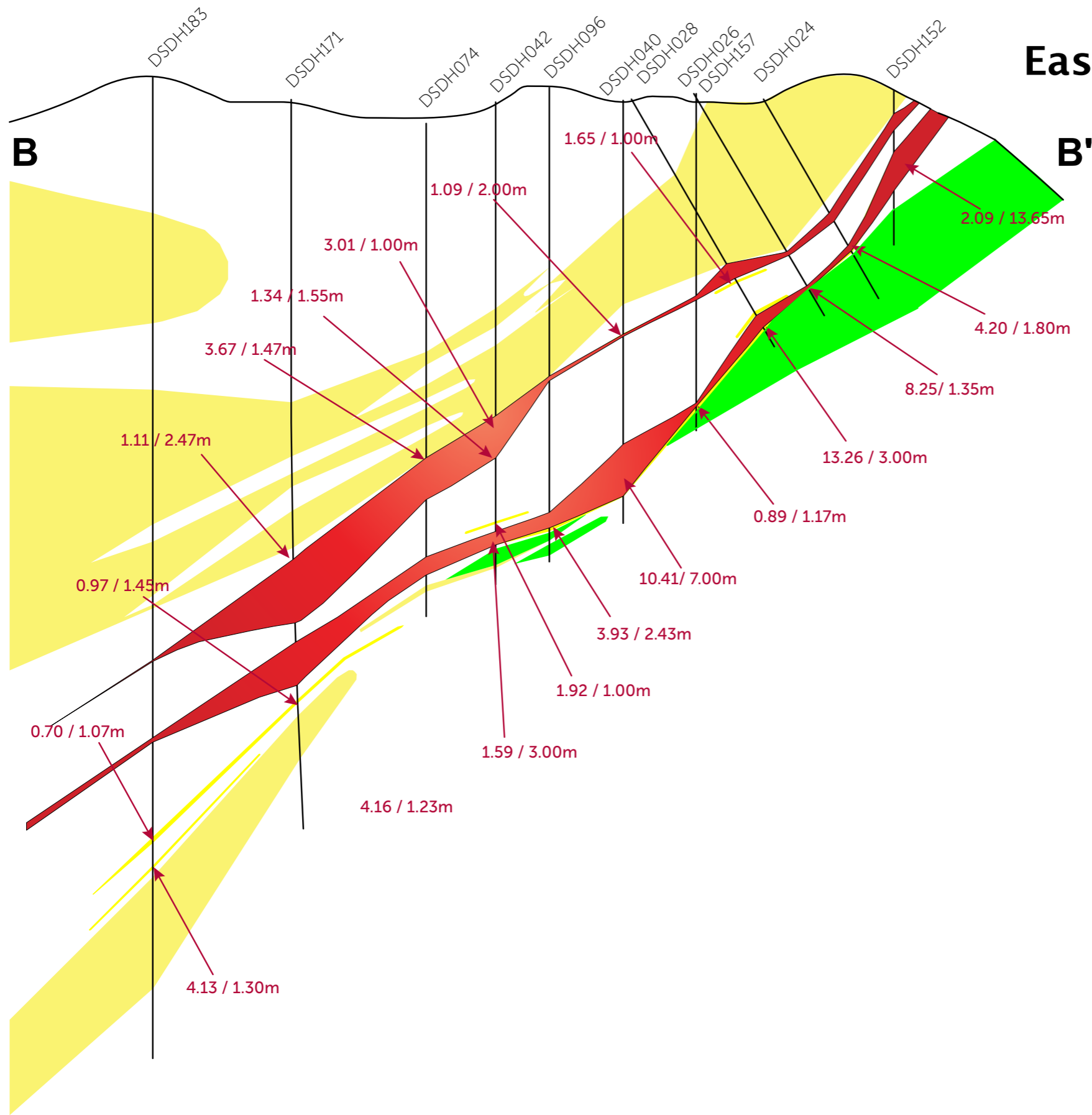


- Legend
- Sediments
 - Marble
 - Breccia
 - Sulphide-quartz vein
 - Mineralization / ore envelope
 - Drill hole
 - Gold assay g/t / m

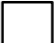








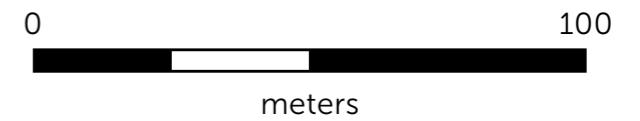
North deposit

East-West cross section



Legend

-  Sediments
-  Ultramafic & Mafic Rock
-  Mafic Rock
-  Sulphide-quartz vein
-  Mineralisation/Ore trend
-  Drillhole
-  45.09 / 5.26m Gold assay g/t Au/M



Resources & Reserves

March 30 2012

Phuoc Son Reserves		2012 Q 1 Residual Reserves		
Category		Tonnes (t)	Grade (g/t) Au	OZ (Gold)
Bai Dat	Proven	21,902	13.46	9,479
	Probable	208,719	5.82	39,053
Bai Go	Probable	150,082	5.98	28,874
	Probable	350,301	5.75	64,789
Total	Total P&P	1,731,004	6.05	142,195

Phuoc Son Resources		2012 Q 1 Residual Resources		
Category		Tonnes (t)	Grade (g/t) Au	OZ (Gold)
Bai Dat	Measured	21,902	13.46	9,479
	Indicated	120,948	13.23	51,437
	Inferred	125,095	5.31	21,474
Bai Go	Measured	98,322	8.90	28,122
	Indicated	299,468	7.50	72,256
	Inferred	2,330,575	6.00	449,749
Phuoc Son Total				
	Measured	120,234	9.73	37,601
	Indicated	420,415	9.15	123,693
	M&I	540,649	9.28	161,294
	Inferred	2,456,269	5.97	471,223

Mining operations

South Deposit (Bai Dat)

- **Development commenced April 2007**
- **Production from June 2008**
- **Early production toll treated at Bong Mieu Mine**

North Deposit (Bai Go)

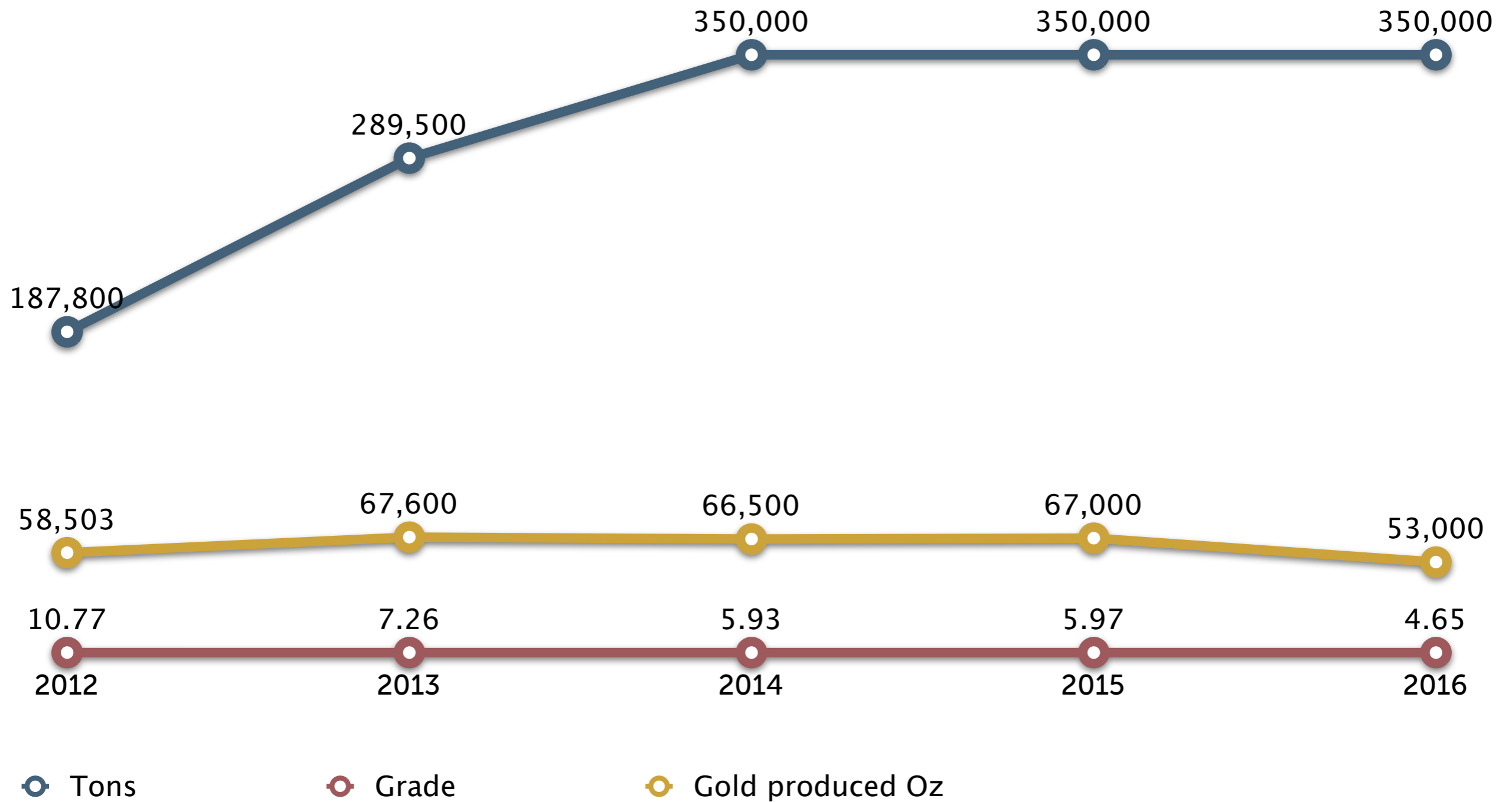
- **Development commenced May 2011**
- **Production from June 2012**

Process Plant

- **Construction commenced 2009**
- **Now operating to specification (92–95% recovery)**
- **First gold poured 2011**

Production forecast

Phuoc Son

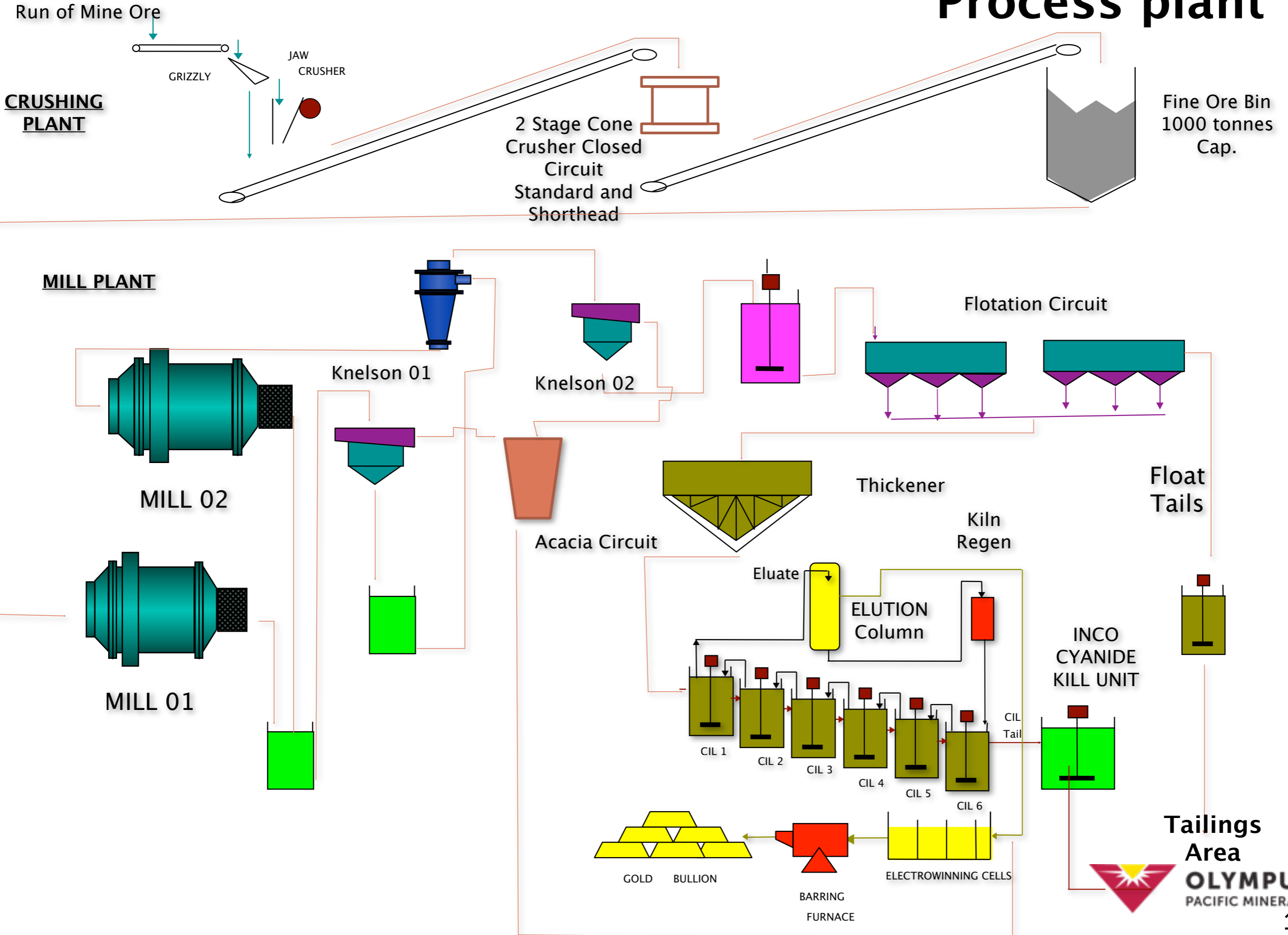


Process plant

- Current nominal mill head grade 10g/t Au
- Total produced 265,700MT @ 15.03 g/t ~ 128,400 OZ
- Current nominal through put 600TPD
- Recovery 92–95%



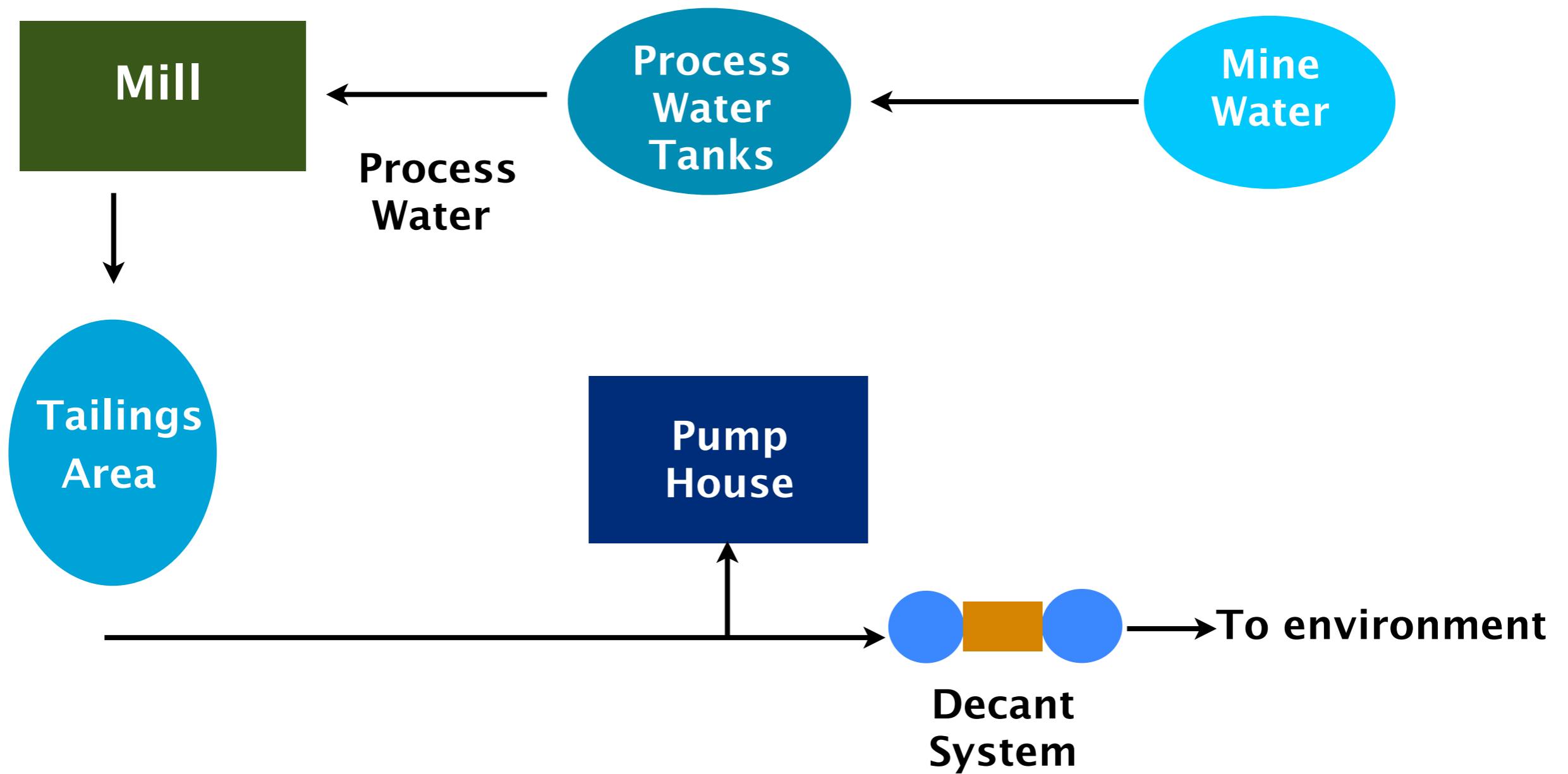
Process plant



Tailings Area
OLYMPUS
PACIFIC MINERALS

Water system

Phuoc Son



Tailings facility

- 8 Acres
- Three compartments. Two for sulfide and one for non-sulfide tails storage
- Process water is 100% recycled back to the mill

People

Our most precious resource



Thank you.