

Bong Mieu gold mine



Tectonic map

Vietnam



0 500


kilometers

Legend

 Gold/Copper mine

 Olympus property

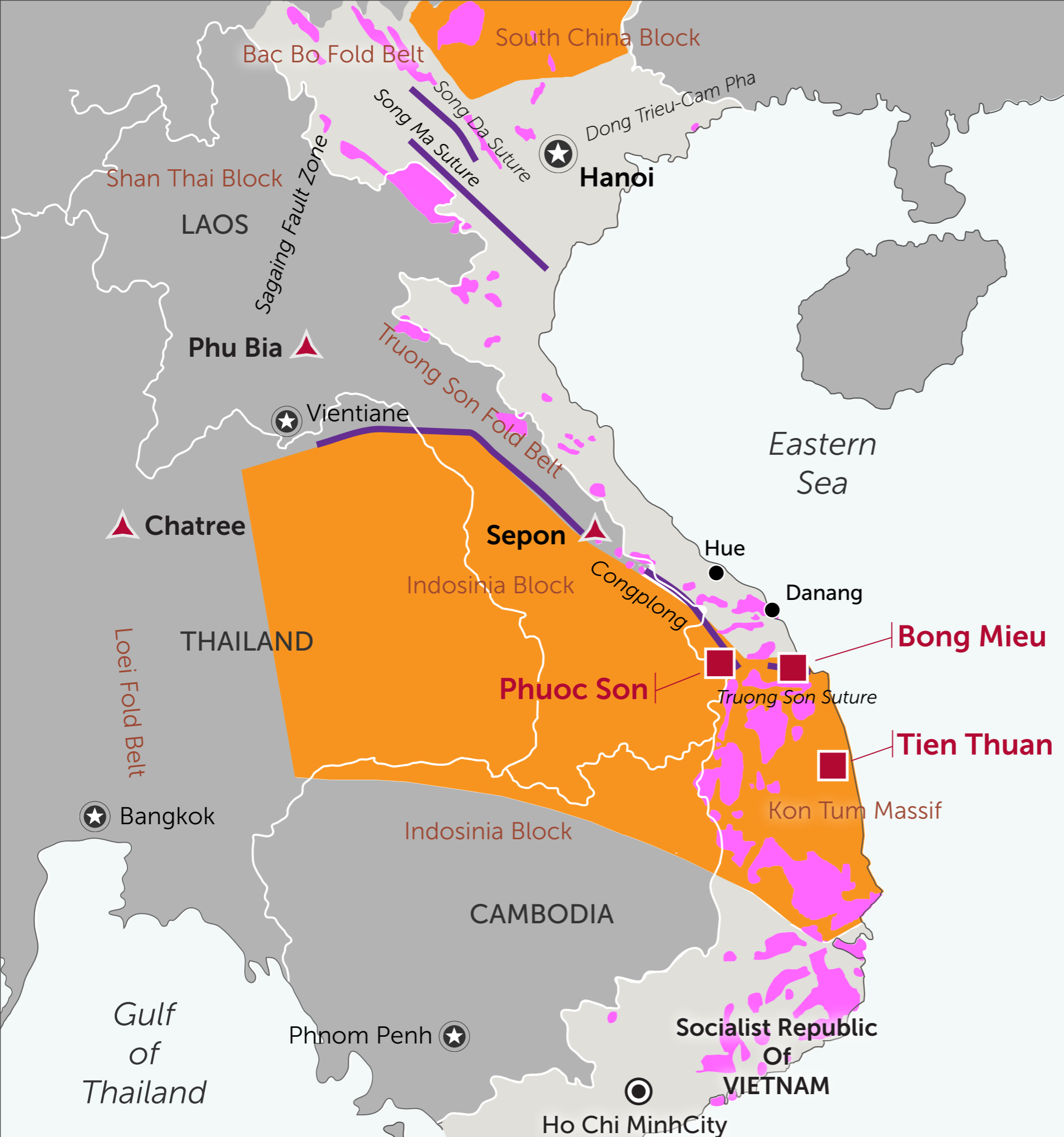
 Capital city

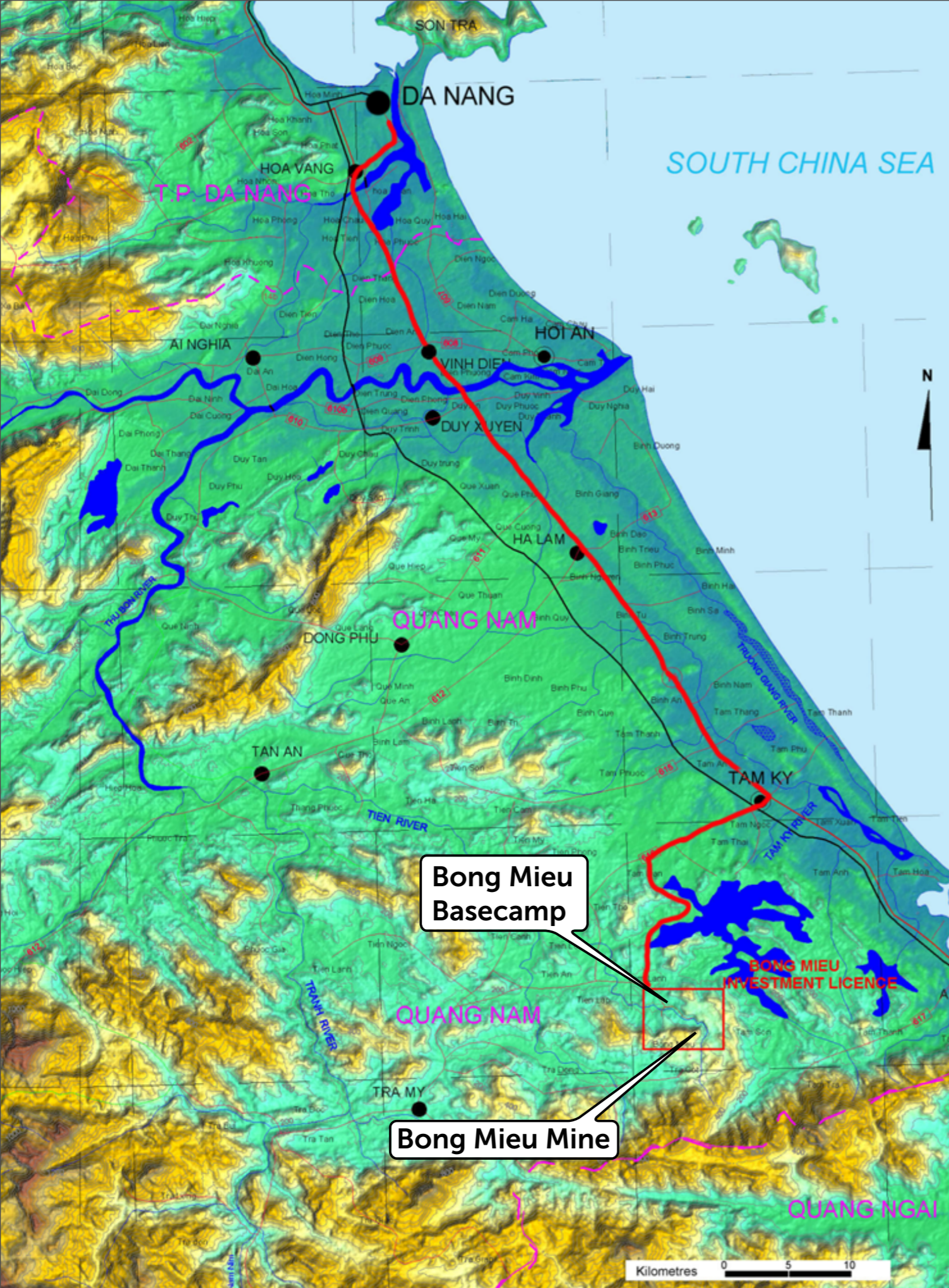
 Precambrian Craton

 Granite

 Significant fault

 Ophiolite belt





Bong Mieu
Route map

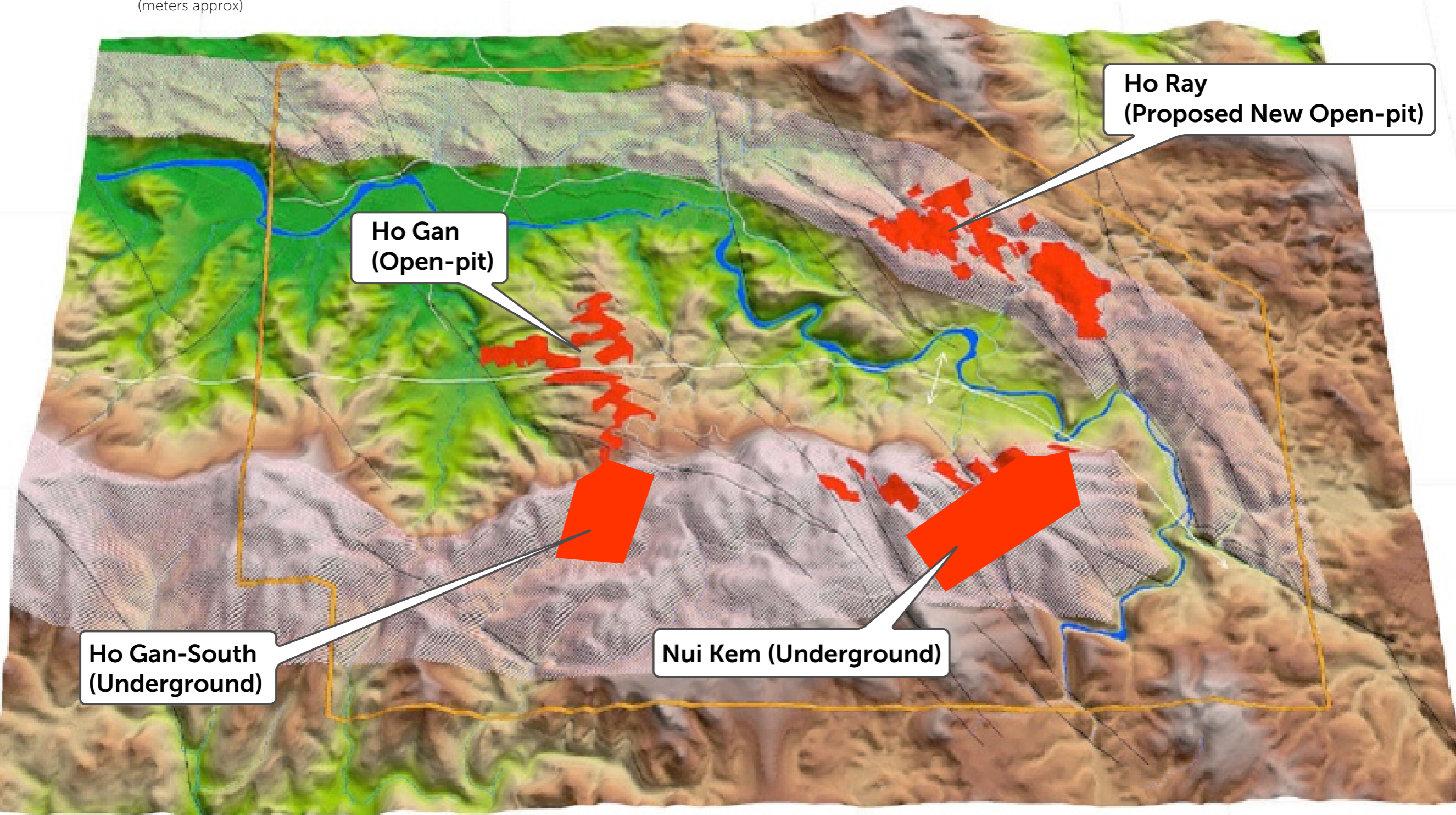
Bong Mieu



0 1000



(meters approx)



Ho Ray
(Proposed New Open-pit)

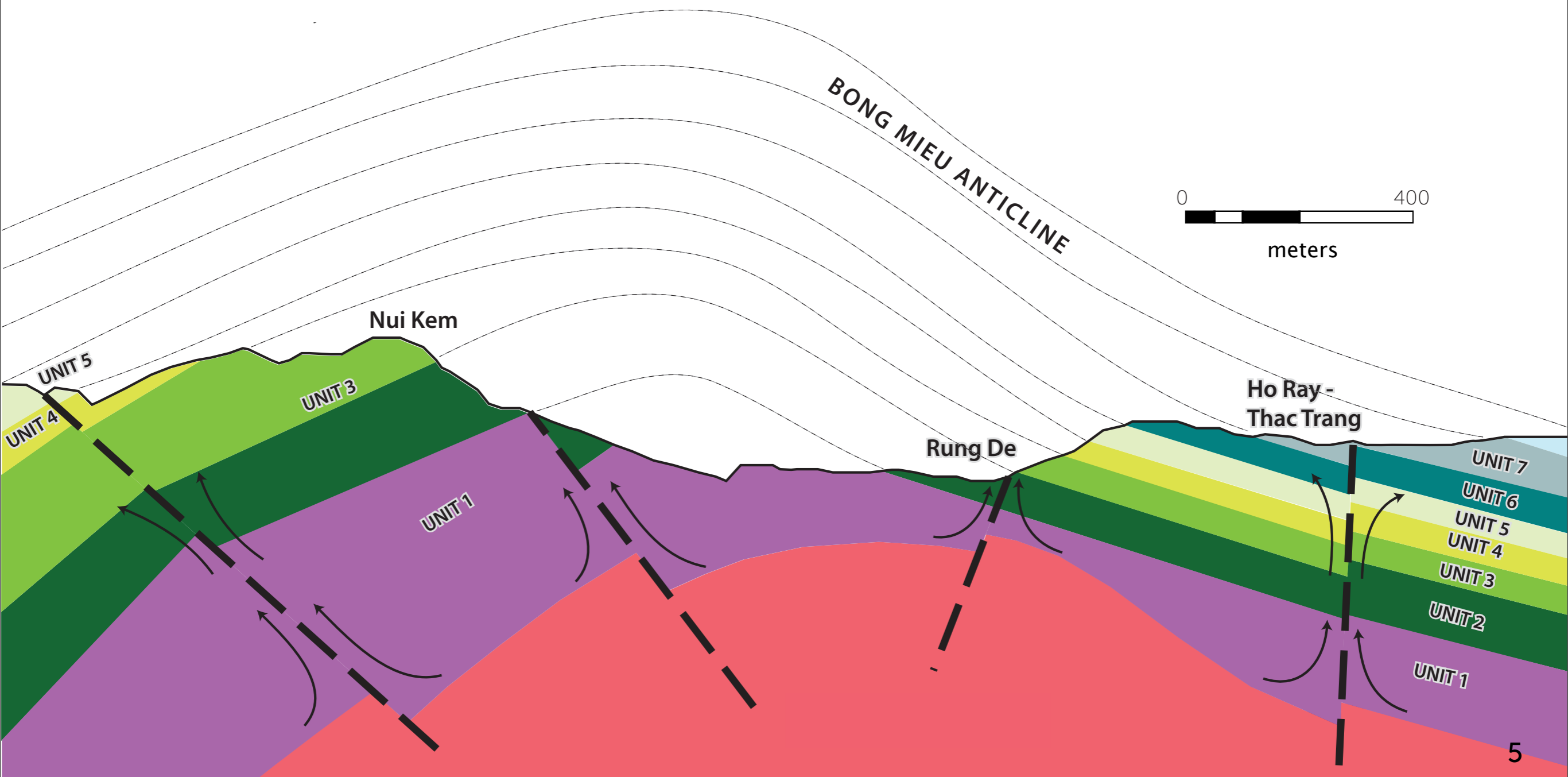
Ho Gan
(Open-pit)

Ho Gan-South
(Underground)

Nui Kem (Underground)

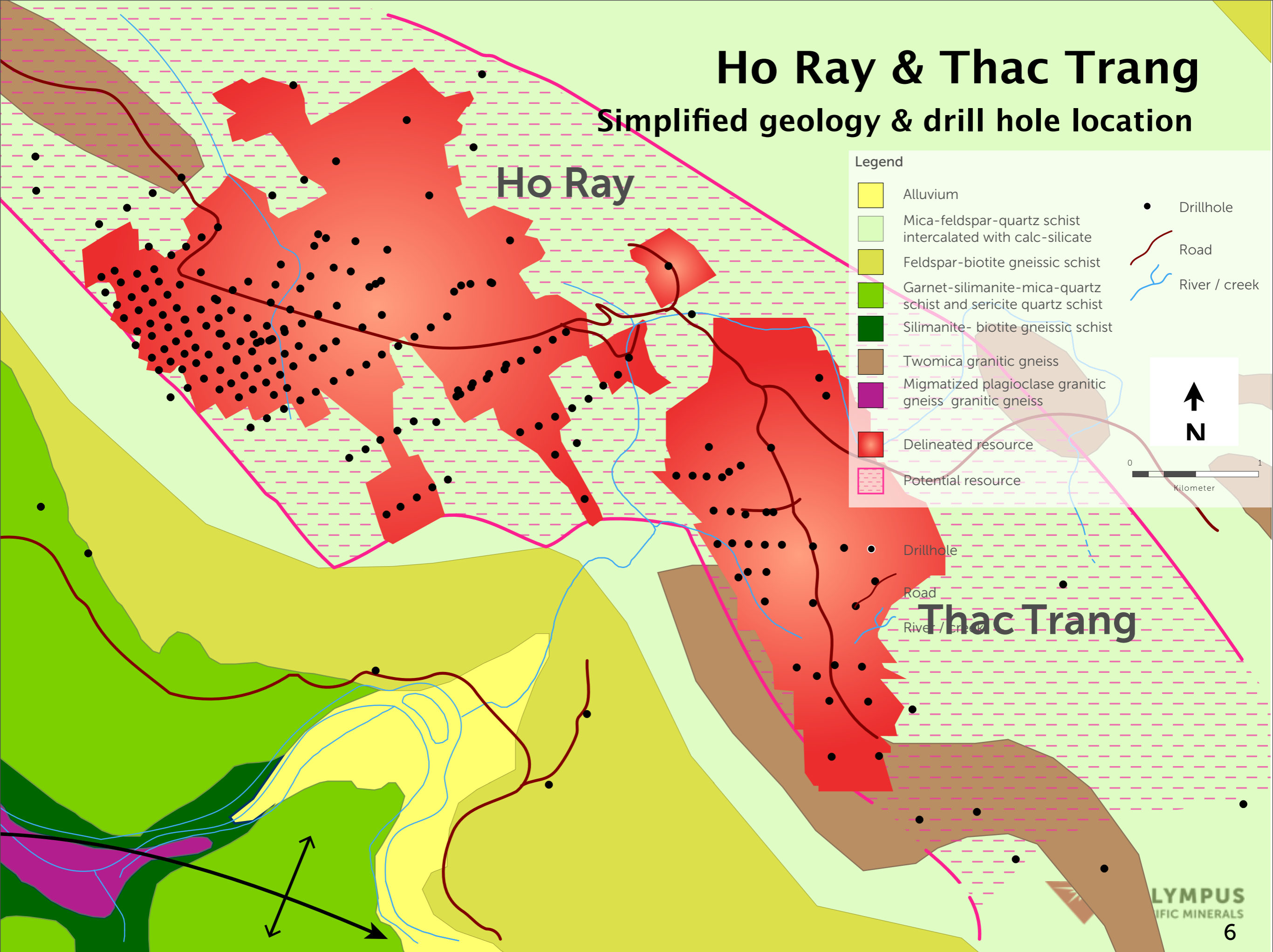
Bong Mieu Anticline

Section looking west

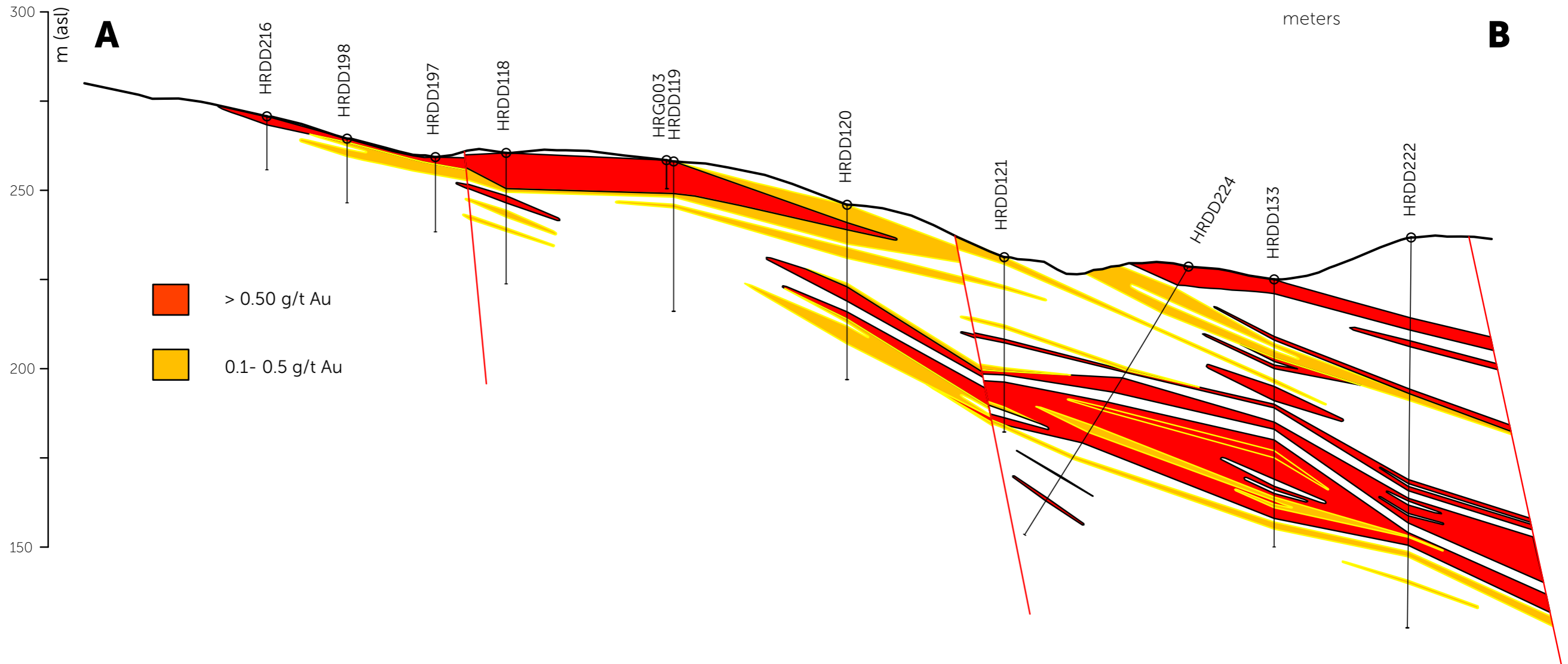


Ho Ray & Thac Trang

Simplified geology & drill hole location

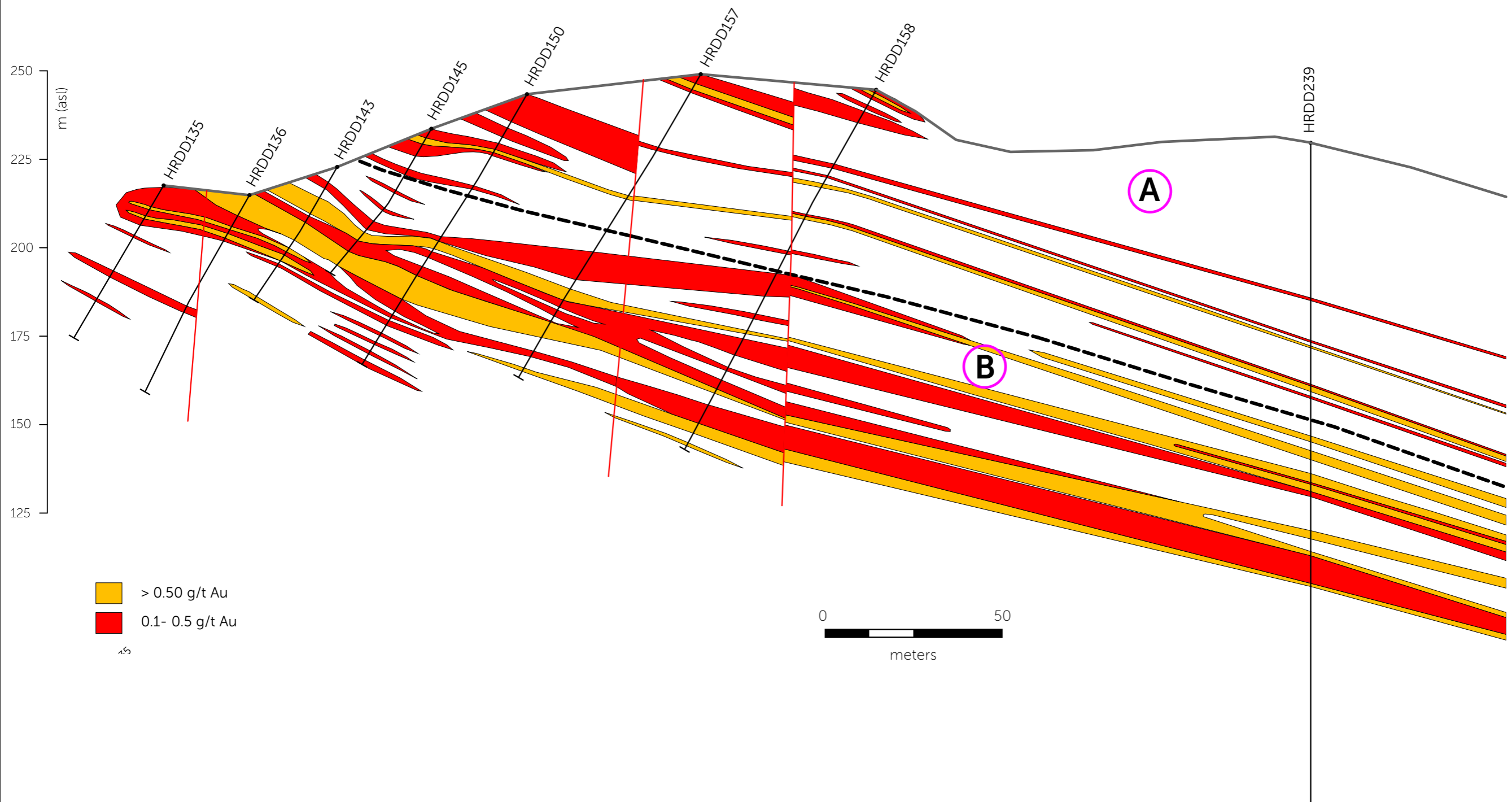




Ho Ray Section SW-NE



Thac Trang

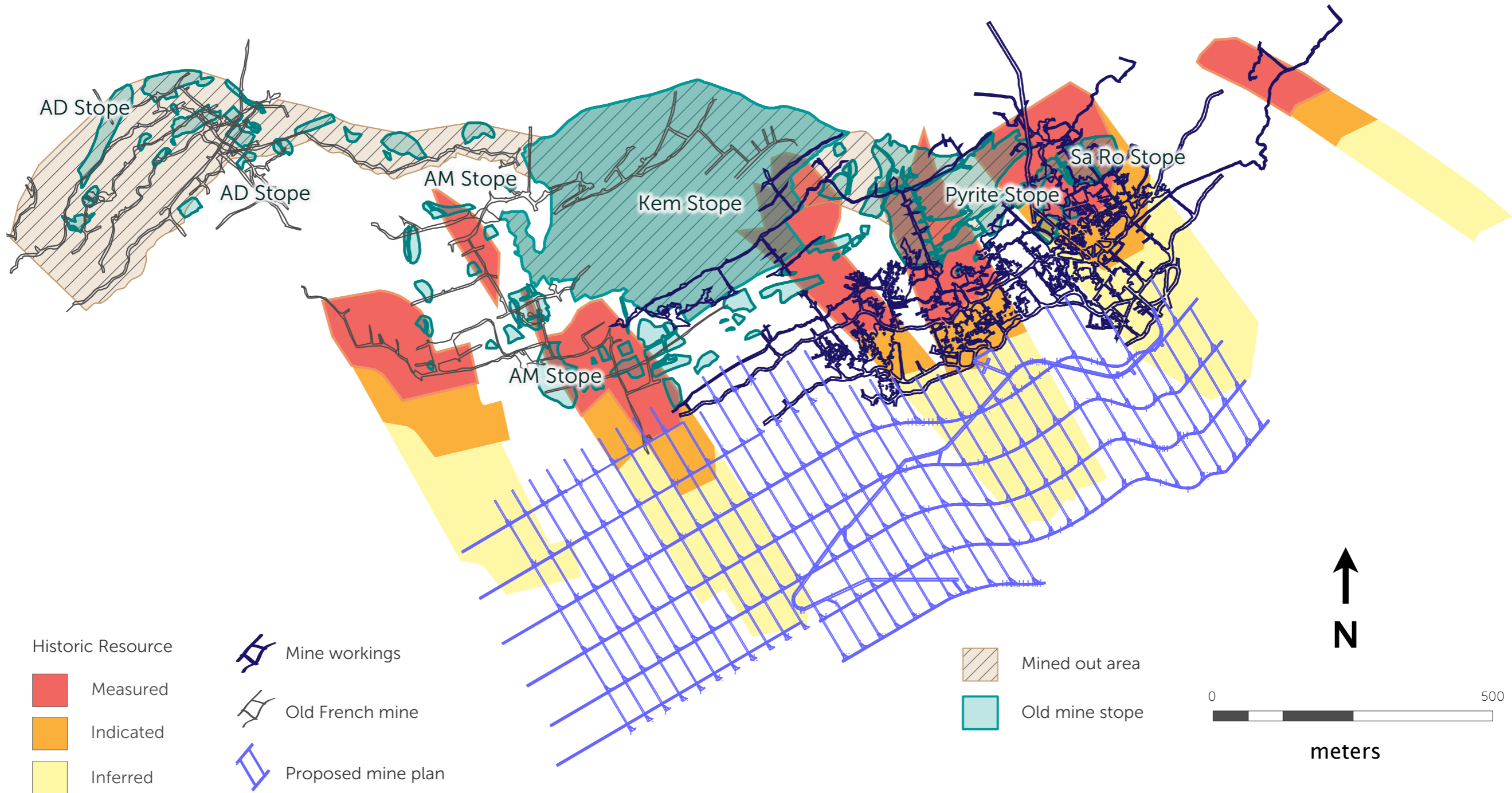
Section SW-NE



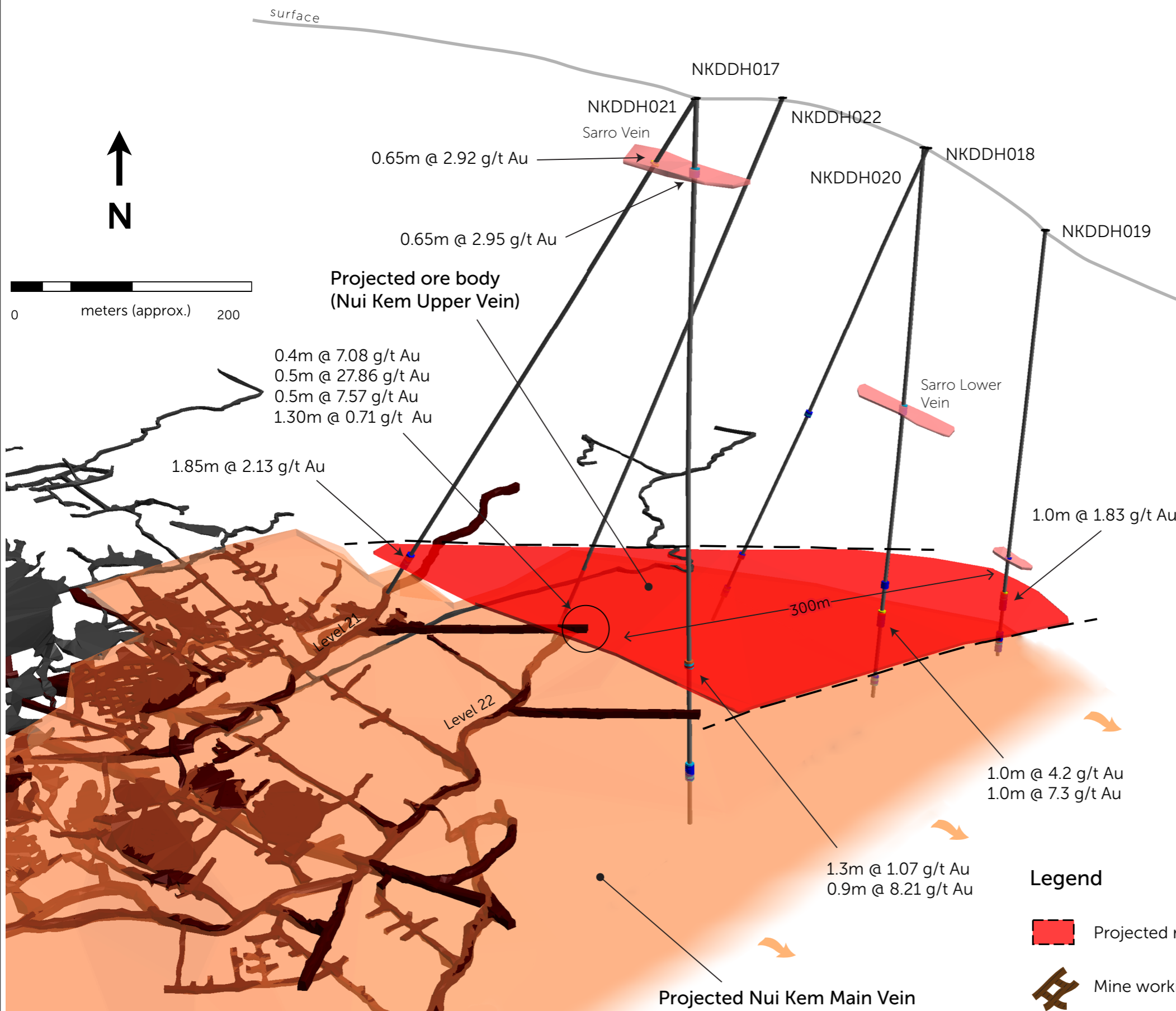
 > 0.50 g/t Au
 0.1- 0.5 g/t Au

0 50
meters

Nui Kem Main Vein



Nui Kem Upper vein

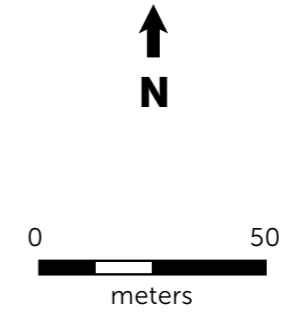
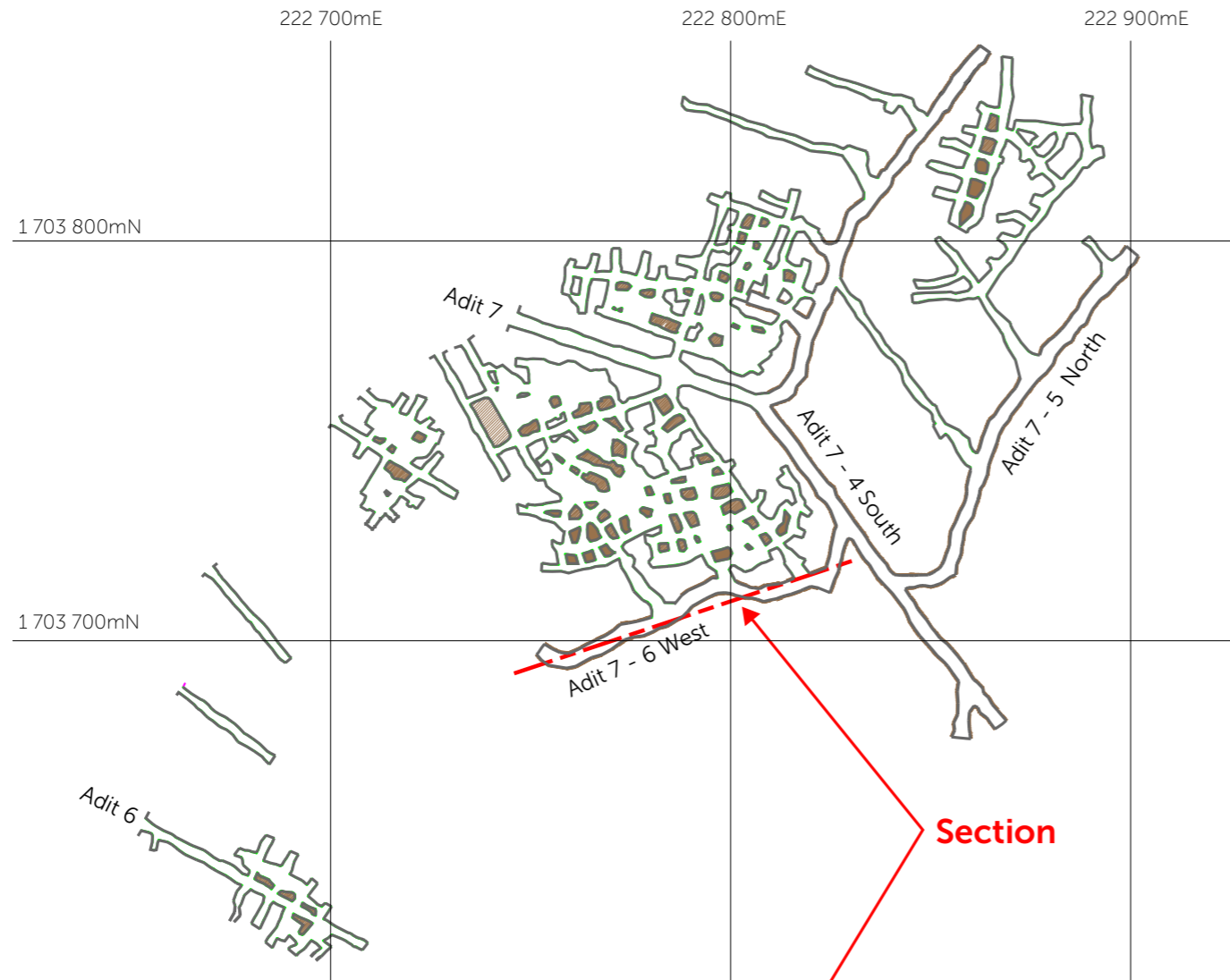


Legend

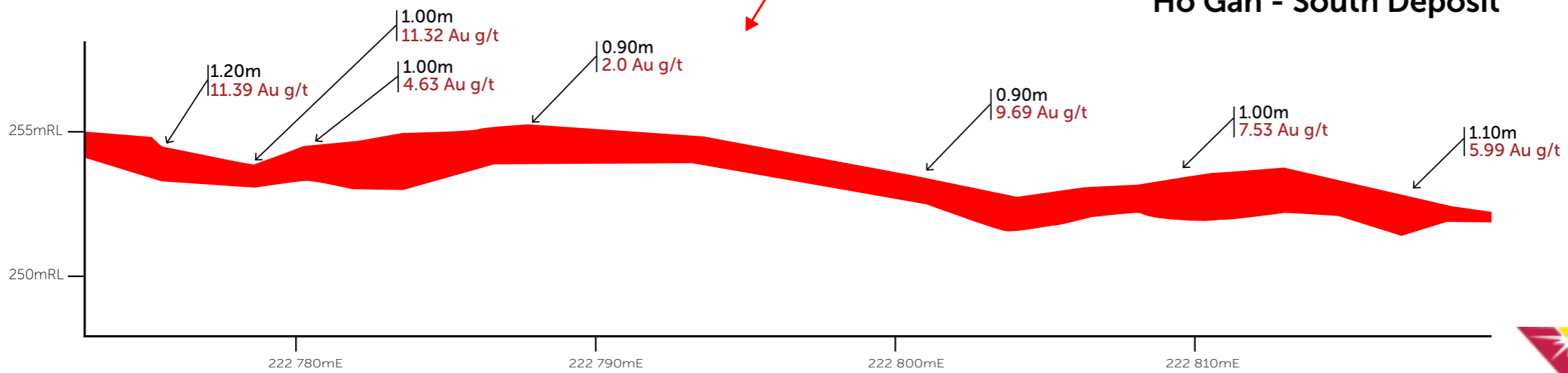
- Projected resource
- Mine workings



South deposit Ho Gan



**Site Visit
To: Level 7-6 West
(Underground)
Ho Gan - South Deposit**



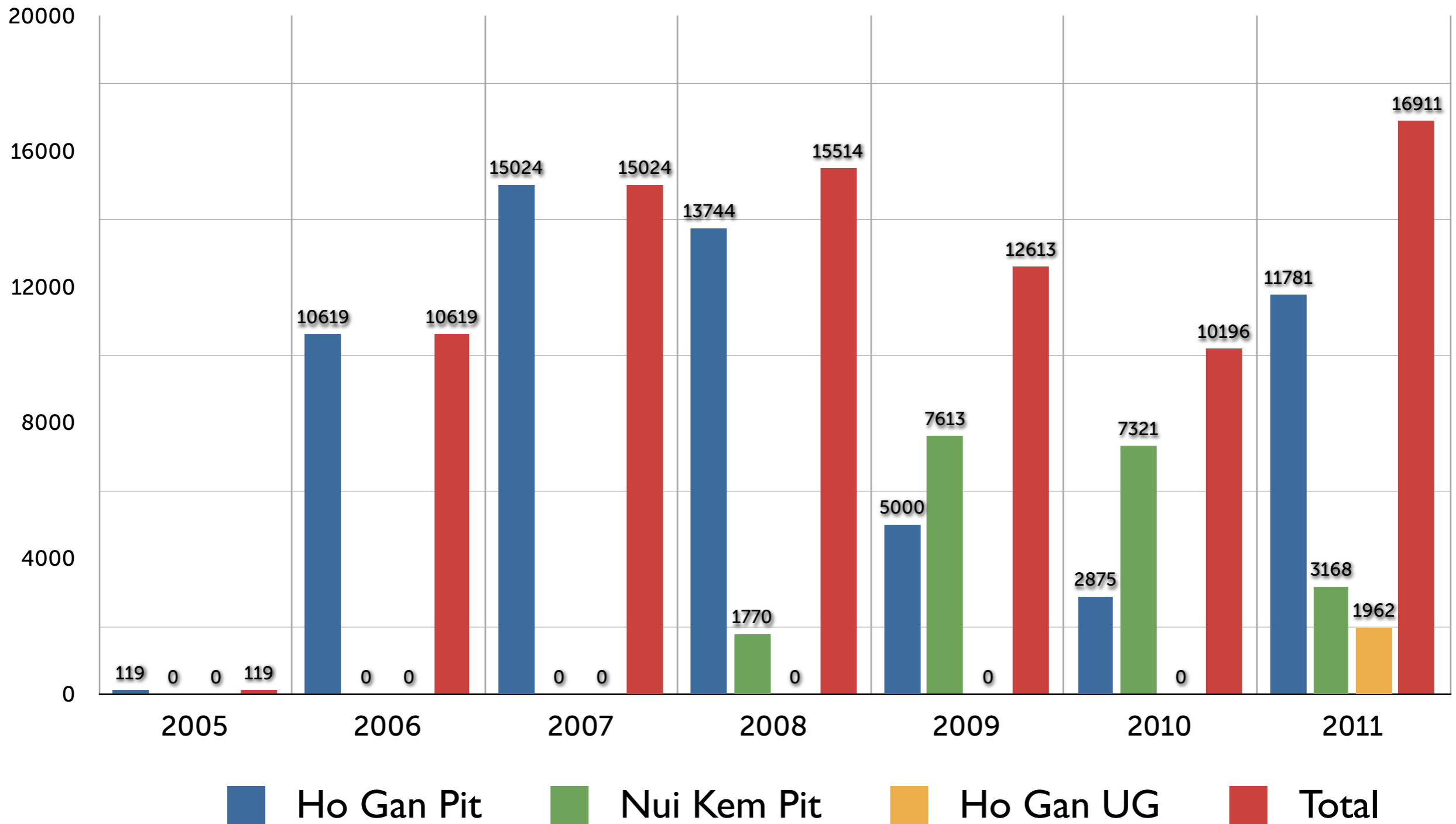
Resources & reserves

As of 30 March 2012

Bong Mieu Reserves & Resources				
Bong Mieu Reserves	Category	2012 Q 1 Residual Reserves		
		Tonnes (t)	Grade (g/t)	Oz Au
Ho gan Open Pit	Proven			
Ho gan Open Pit	Probable	111,656	2.06	7,385
Total	Total P&P	111,656	2.06	7,385
Bong Mieu Resources				
Bong Mieu Resources	Category	2012 Q 1 Residual Resource		
		Tonnes (t)	Grade (g/t)	Oz Au
Ho Gan	Measured	97,560	2.33	7,308
	Indicated	343,414	1.45	16,004
	Inferred	66,320	2.13	4,542
Ho Ray/ Thac Trang	Measured	940,100	1.92	57,730
	Indicated	2,153,900	1.47	101,797
	Inferred	4,885,600	1.38	216,764
*Other Metal Credits				
Ho Ray/ Thac Trang	Measured	Tungsten (as Au Equivalent)		37,908
	Indicated			69,793
	Inferred			97,779

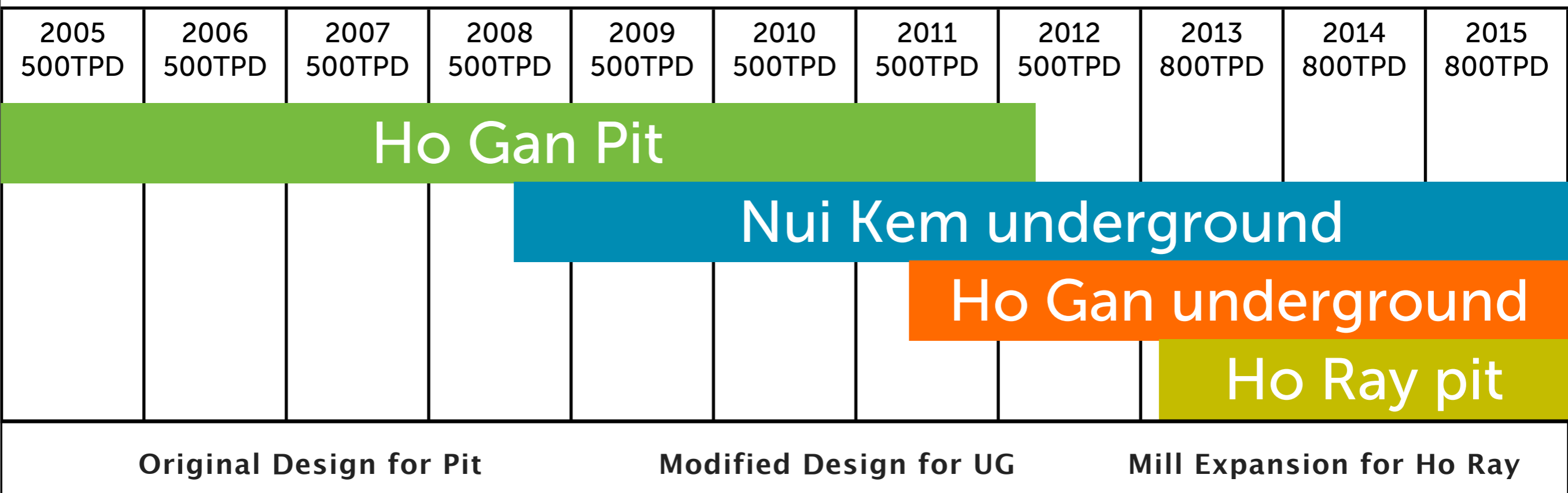
Bong Mieu

Historical production



All figures Oz Au

Operations Timeline



Personnel

Bong Mieu

4 Shift Schedule Operation

Mining Operation	=	503
Contractors	=	98
Other Services	=	258
Total	=	761

Mobile Fleet

- 4 Load-Haul-Dump Loaders
- 3 Low Profile Trucks
- 2 Jumbo Drills
- 1 Scissor Lift

Milling process

Bong Mieu

- **Commissioned 2006**
- **Gold recovery 70–75%**
- **Nominal throughput 500 tpd**
- **Batch process (Ho Gan & Nui kem)**
- **Conventional crush, grind, gravity, flotation**
- **SCADA system to control & monitor process**
- **ILR (Intensive leach reactors)**
- **Inco Cyanide destruction process**

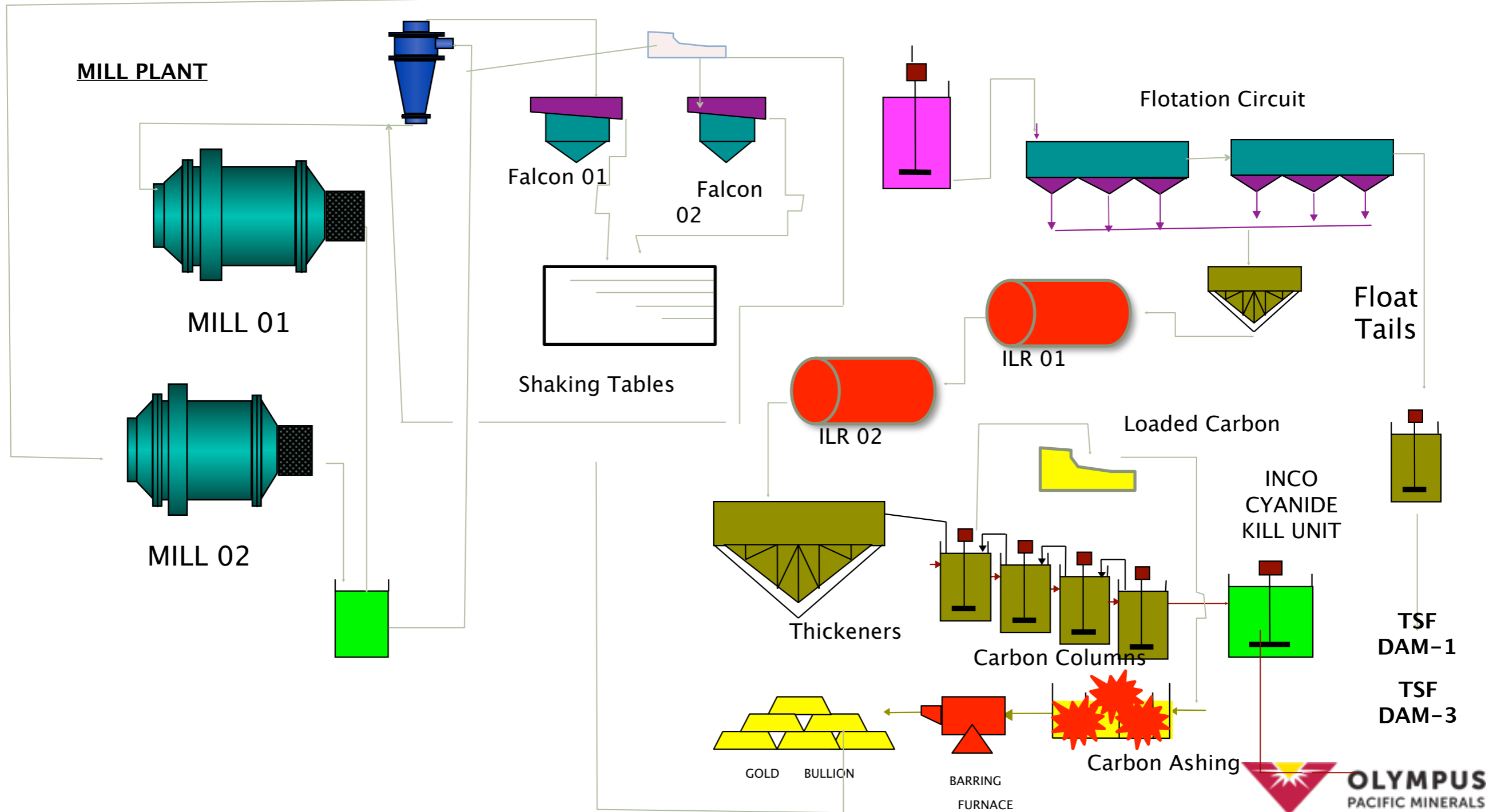
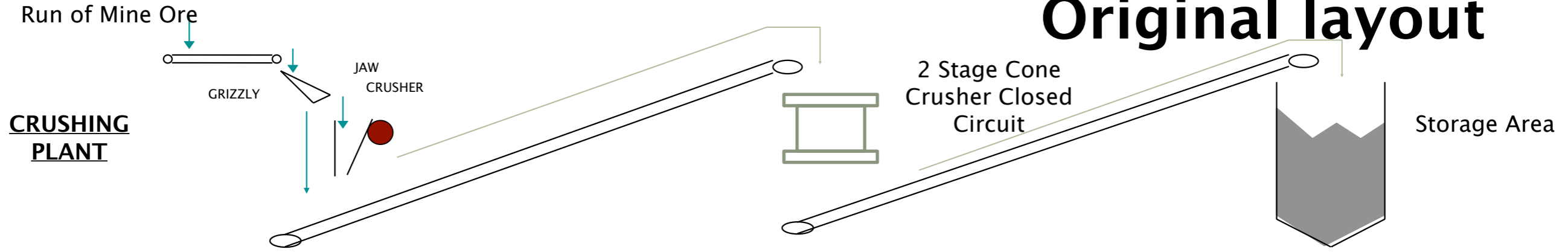
Ho Gan (Open pit & underground)

- Pyrite, quartz breccia
- 1–3% Sulfur grade (Oxidized ore)
- 3–5 g/t Au
- Trace amounts of silver, galena & arsenopyrite

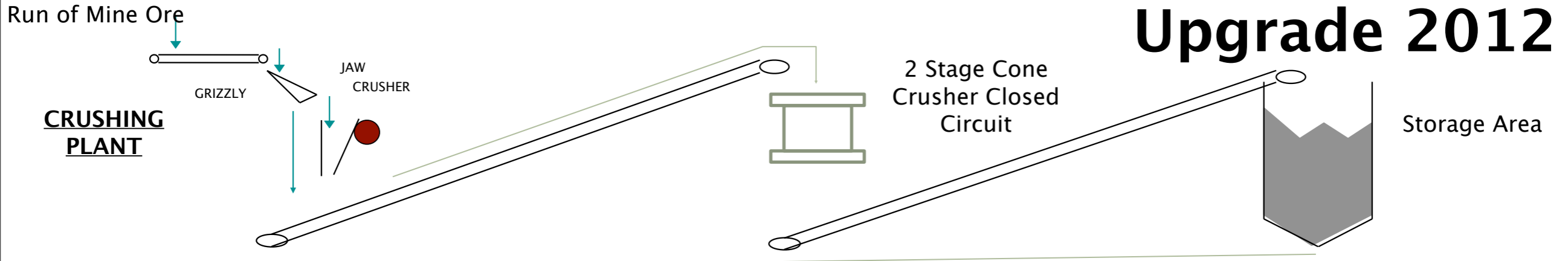
Nui kem

- Galena (pbs) & sphalerite (Zns) as high as 2%
- 5–6 % Sulfur grade
- 3–5 g/t Au

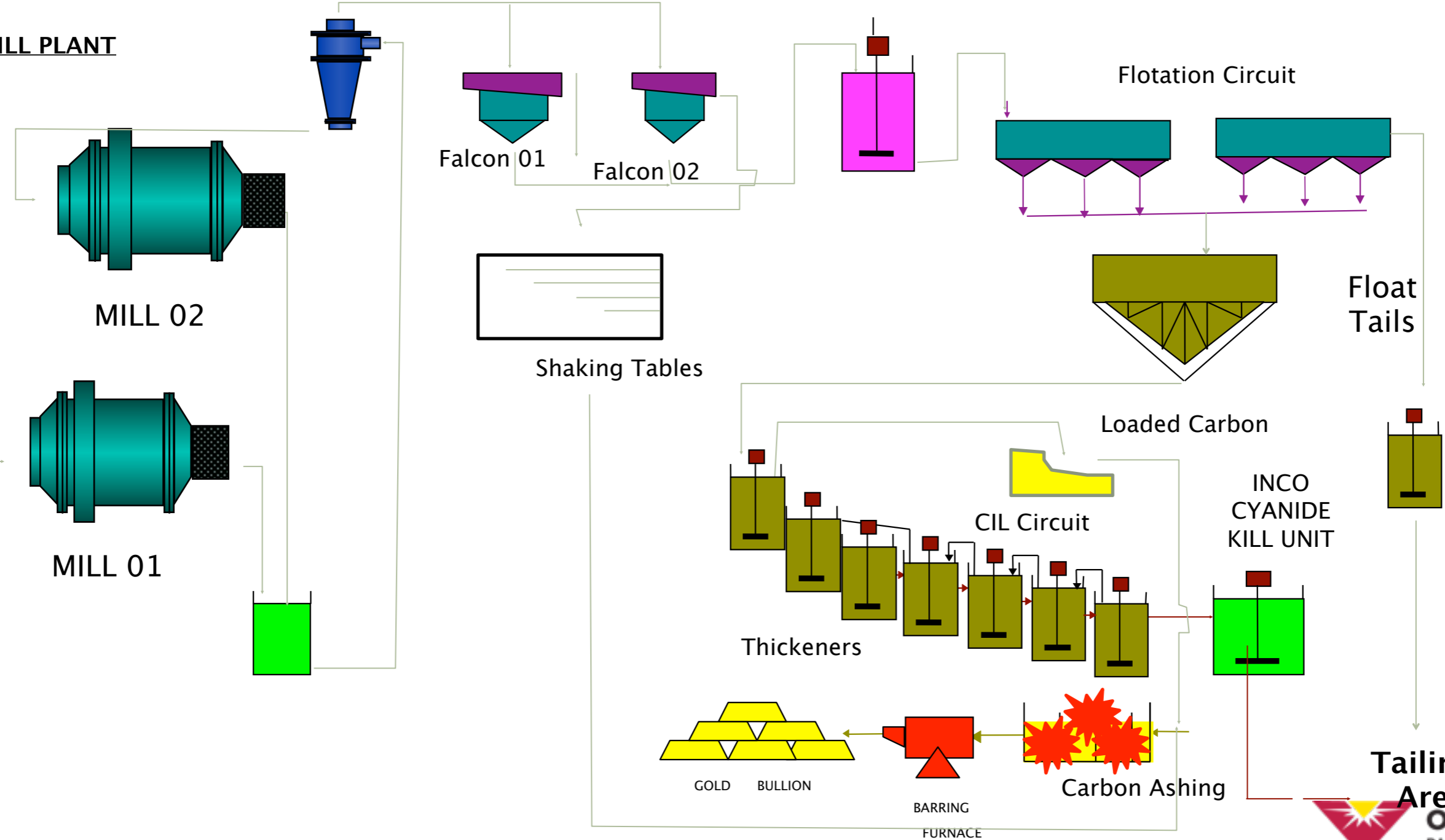
Original layout



Upgrade 2012



MILL PLANT



Gold recovery

Bong Mieu

Current

Gravity –Tables–Dore Melting

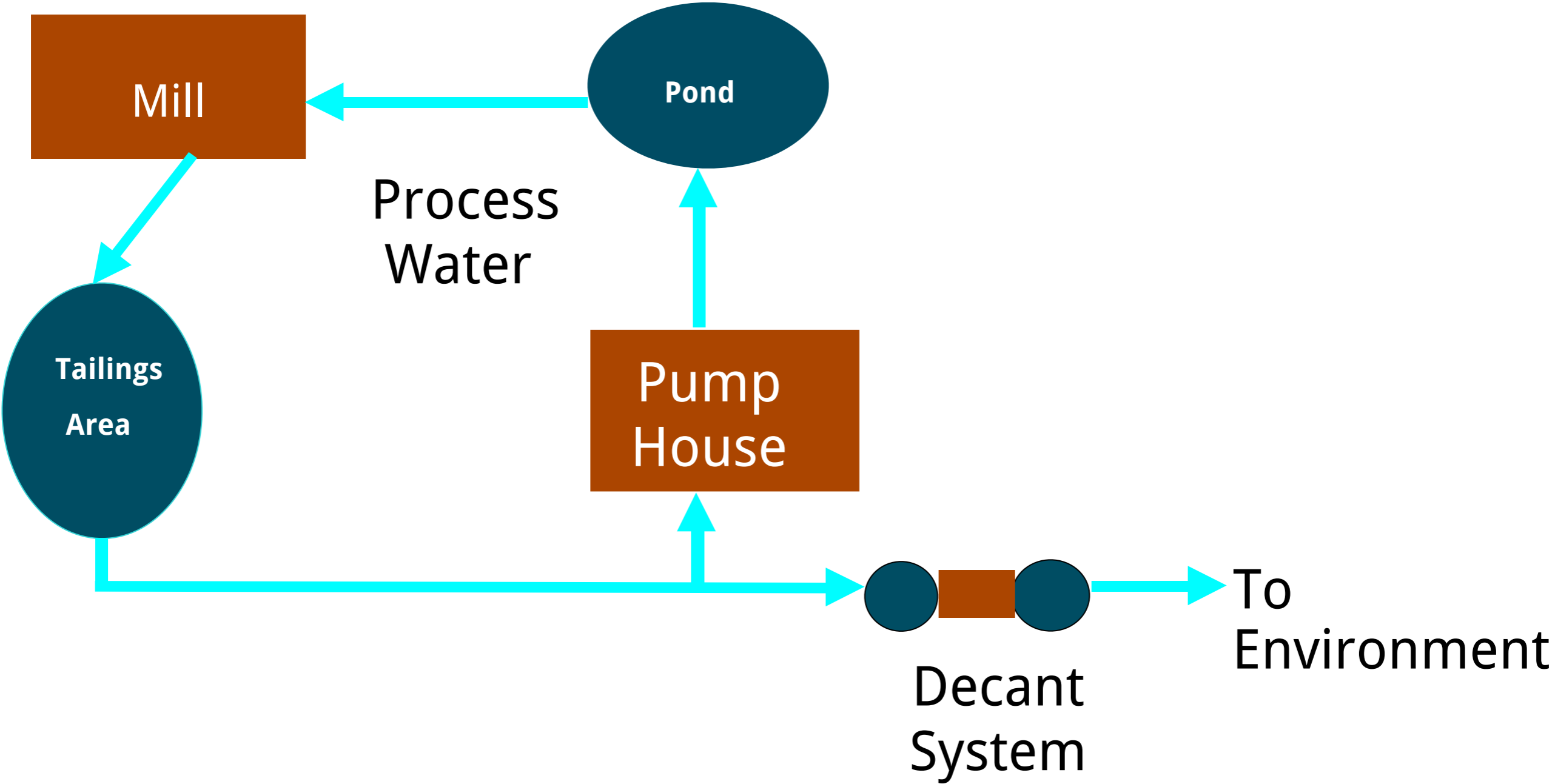
**Flotation–ILR Leach–Carbon
Adsorption–Ashing–Dore
Melting**

Future (underway)

Replace ILR with CIL

Water system

Bong Mieu



Tailings facility

Bong Mieu

- 55 Acres
- Subdivided in three compartments for Sulfide & non-Sulfide
- Processed water is 100% recycled back to mill

Thank you

