



Narhex Life Sciences Ltd

Level 24, 44 St George's Terrace
PERTH WA 6000
P: +61-8-6211 5099
F: +61-8-9218 8875

ABN: 51 094 468 318

Monday 23rd July 2012

Company Announcements Office
Australian Securities Exchange
10th Floor
20 Bond Street
SYDNEY NSW 2000

Dear Sir,

EPC 2769 GRANTED

Narhex Life Sciences Limited (ASX:"NLS") ("**Narhex**" or "**the Company**") has received formal notification from the Vendor, Coalplay Pty Ltd ("Coalplay"), that the Queensland government has granted EPC 2769 "Glastonbury".

Consequently the 6 month option period in which to decide whether to acquire the tenement from Coalplay has commenced. That option period will expire on the 3rd January 2013.

Narhex will now commence a Due Diligence process on the tenement to ascertain whether or not to proceed with the acquisition and transfer of the tenement. The acquisition will be subject to all necessary shareholder and regulatory approvals.

EPC 2769 is in the Maryborough Basin, within 15 kms to the south of Tiaro Coal Ltd's EPC 956, on which Tiaro have recently announced an exploration target of 100 to 200 million tonnes within the Tiaro coal measures, with a maiden 40M tonne JORC resource of metallurgical coal quality on EPC 956. ¹

The prospectivity of successful exploration in the Maryborough Coal Basin for coal deposits with the potential to produce and mine metallurgical (coking, PCI) and thermal coal has been encouraged with the activity of Tiaro.

Coalplay have also advised that they have commenced the application for the granting of a coal exploration license for EPC 2771 near the township of Moonie in Queensland.

¹ ASX ANNOUNCEMENT – Tiaro Coal Limited (ASX: TCM) 12th July 2012.

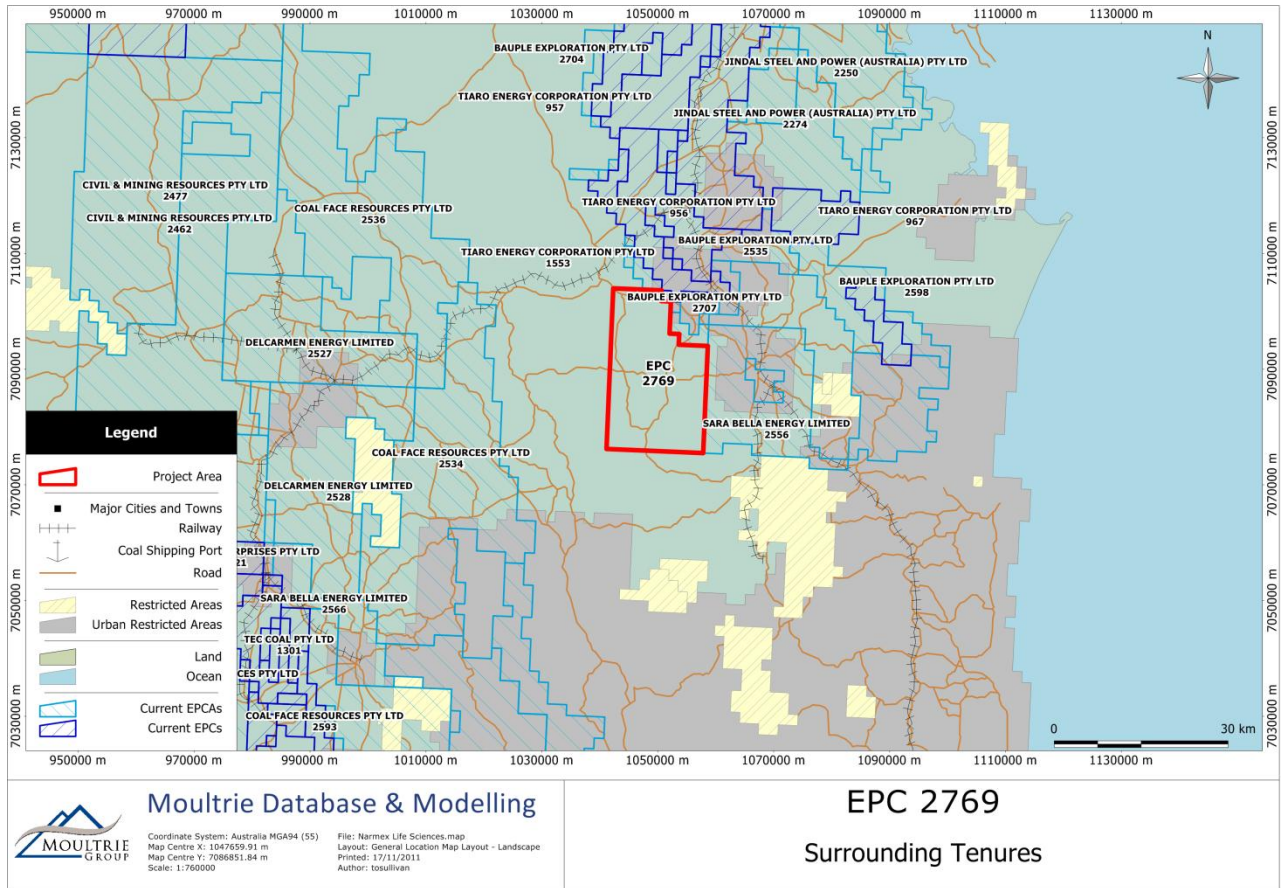
Narhex continues in its Joint Venture through Narhex Life Sciences International Limited in Xi'an Hex, the principal activity of which remains the development and commercialization of its anti HIV Protease inhibitor, DG-17.

Yours faithfully

A handwritten signature in blue ink, appearing to read 'Simon Lill', is positioned above the printed name.

Simon Lill
Director
Narhex Life Sciences Limited

MAP ONE – EPC 2769 GLASTONBURY



MAP TWO – EPC 2771 (“MOONIE”)

