



DRILLING INTERSECTS 440m @ 0.75% COPPER EQUIVALENT AT LLAHUIN COPPER PROJECT, CHILE

**OUTSTANDING INTERSECTION INCLUDES 208m @ 1.20% Cu Eq
INDICATING POTENTIAL HIGH-GRADE ZONE**

Highlights:

- Outstanding intersection returned from diamond core drill hole DDH-LLA-021, in the **Central Porphyry** zone:
 - **440m @ 0.75% Cu Equivalent* from 2m and includes 208m @ 1.20% Cu Equivalent from 108m**
- New drill hole collared 100m south west of DDH-LLA-021 to follow up on this exceptional result
- Strong intersection of **54m @ 0.66% Cu Eq** returned from the **Cerro Zone**, located 1km south of the Llahuin Central Porphyry zone
- New results are subsequent to the recent maiden Measured and Indicated Resource for the Llahuin Copper Project of **106Mt @ 0.4% Cu Eq** for 318,000t of copper and 307,000oz of gold

International mining company **Southern Hemisphere Mining Limited** (ASX: SUH, TSX-V: SH) ("Southern Hemisphere" or the "Company") is pleased to advise that recent drilling has returned a spectacular intersection of **440m @ 0.75% copper equivalent** from the Central Porphyry zone at its flagship 100%-owned Llahuin Copper Project in central Chile.

The intersection, which included a high-grade interval of **208m @ 1.2% copper equivalent**, highlights the potential for a high-grade zone within the Central Porphyry.

The new results have been received as part of an ongoing resource in-fill and extensional drilling program at the Llahuin Copper Project, following the recent announcement of a maiden JORC Measured and Indicated Resource of **106 million tonnes grading 0.4% copper equivalent (0.3% Cu and 0.09 Au g/t) for an estimated 318,000 tonnes of contained copper and 307,000 ounces of gold.**



ASX: SUH
TSX-V: SH
www.shmining.com.au

AUSTRALIAN OFFICE
Suite 7, 1200 Hay Street
West Perth WA 6005
TEL: +61 8 9481 2122

CHILEAN OFFICE
Minera Hemisferio Sur SCM
Office 41, Zurich 255
Las Condes, Santiago
TEL: +56 2 474 5071

The maiden resource includes both the Central Porphyry and the Cerro Zone, located approximately 1km to the south.

Results have so far been received for 3 of 4 diamond core holes drilled since the maiden resource statement was announced. Holes DDH-LLA-20 and DDH-LLA-21 were drilled in the Central Porphyry and DDH-LLA-018 was drilled in the Cerro Zone.

Of particular note in addition to the spectacular intersection in hole DDH-LLA-021 is the strong intersection received in hole DDH-LLA-018, which was drilled into the Cerro Zone.

Hole ID	Intersect m	From m	%Cu	g/t Au	%Cu Eq*
DDH-LLA-018	42	0	0.31	0.21	0.43
	54	120	0.40	0.36	0.66
DDH-LLA-020 (DEEPENING OF HOLE RC-LLA-012)	301	3	0.31	0.10	0.39
DDH-LLA-021	440	2	0.57	0.25	0.75
Includes	208	108	0.86	0.47	1.20

The locations of the new drill holes is summarized below and a cross-section showing the mineralized intersection in hole DDH-LLA-021 are provided in Figure 1 below:

New Drill Hole Locations

Drill-hole ID	X	Y	Z	From	Terminal Depth	Azimuth	Dip
DDH-LLA-018	307308	6531087	1359	0	199.5	60	-60
DDH-LLA-019*	307822	6531991	1334	208	344.5	300	-60
DDH-LLA-020	307713	6531865	1341	208	509.5	300	-60
DDH-LLA-021	307730	6531765	1322	0	610	30	-60

*Awaiting assay results, to be reported once received

Southern Hemisphere's Managing Director, Mr Trevor Tennant, said:

"This is an outstanding intersection which adds significant momentum to our ongoing drilling campaign and provides a clear indication of the presence of a potential high-grade zone within the Central Porphyry zone at the Llahuin Copper Project.

Given that our strategy is geared towards not just building our resource tonnage but also, more importantly, boosting the average grade, this should be viewed as a highly significant result.

With drilling continuing around the clock at Llahuin, we are looking forward to a steady news flow from this Project over the coming weeks and months."



Figure 1: Llahuin Copper Project - section showing the mineralized drill hole DDH-LLA-021:

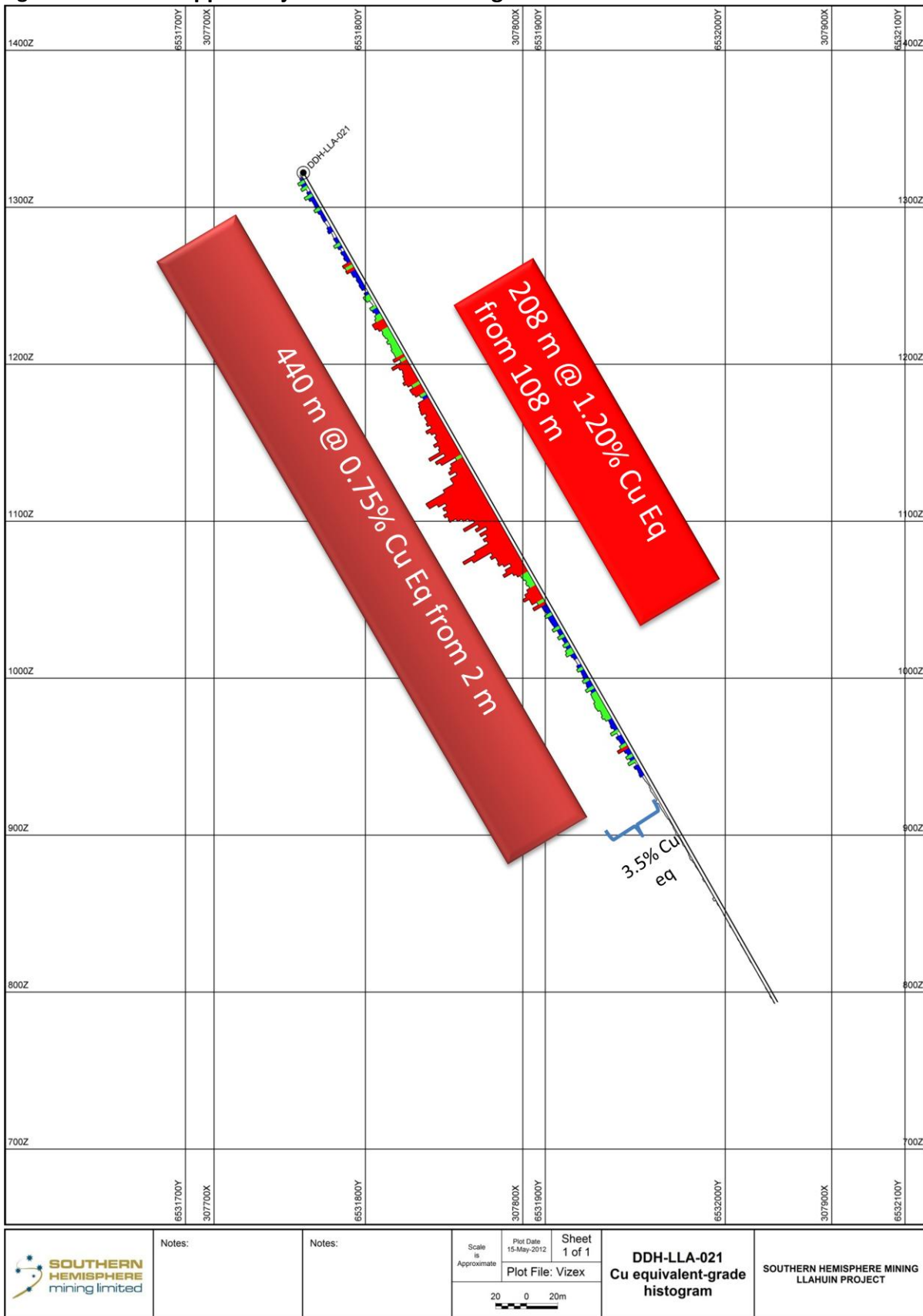
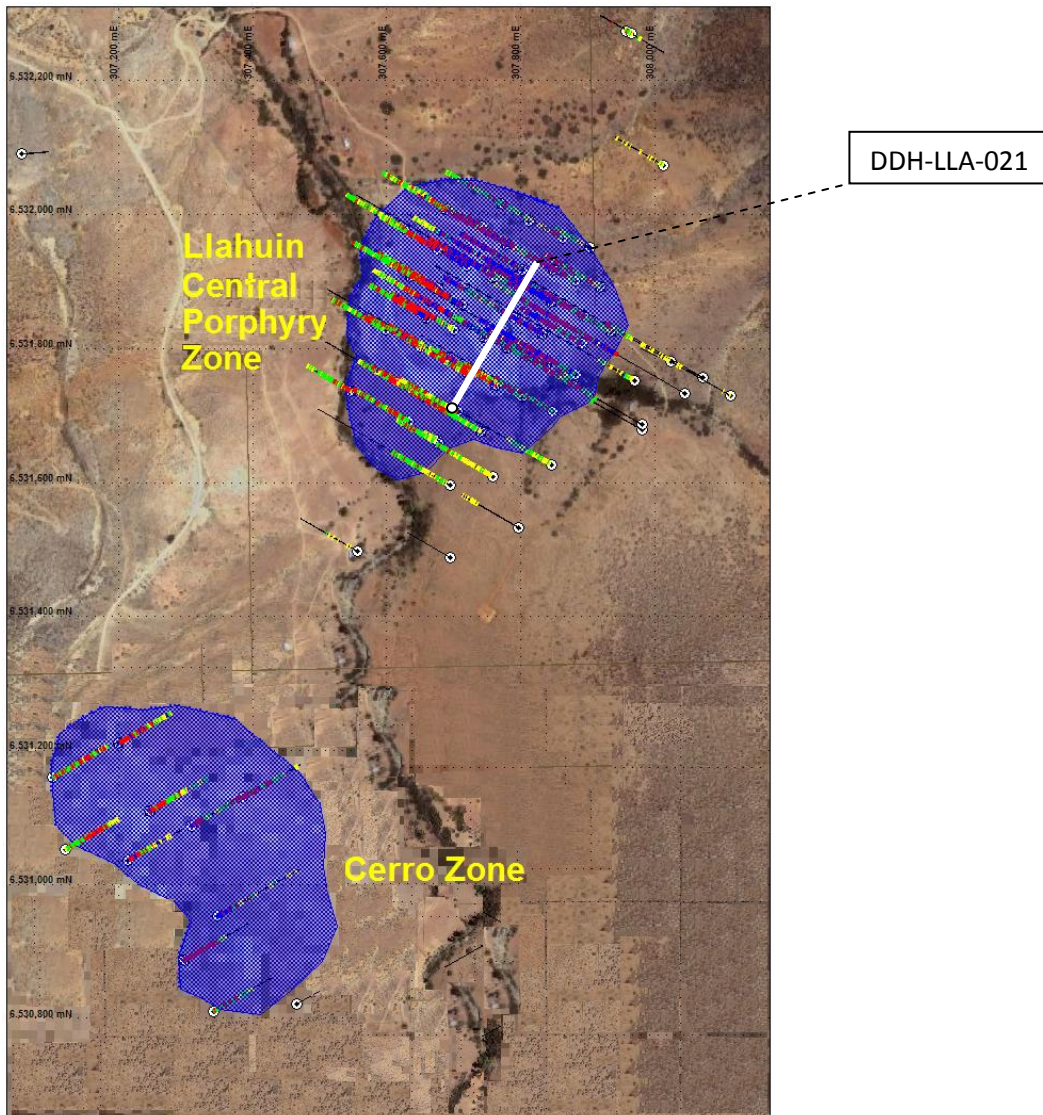


Figure 2: Llahuin Copper Project – Map showing Central Porphyry and Cerro Zones



Geology

Refer to the 18 July 2011 ASX and TSX-V News Release for Llahuin Copper Project geological information.

*Copper Equivalent (or “Cu Eq”)

The copper equivalent calculations represent the total metal value for each metal, multiplied by the conversion factor, summed and expressed in equivalent copper percentage. These results are exploration results only and no allowance is made for recovery losses that may occur should mining eventually result. It is the Company’s opinion that elements considered have a reasonable potential to be recovered as evidenced in similar multi-commodity natured mines.

Copper equivalent conversion factors and long-term price assumptions used are stated below:

Copper Equivalent Formula= $Cu \% + Au (g/t) \times 0.72662$
 Price Assumptions- Cu (US\$3.40/lb), Au (US\$1,700/oz)



Significant Intercepts

Other holes and intercepts in this News Release that are not highlighted were insignificant or generally had a copper equivalent of less than 0.24%. Anomalous intercepts of less than 6m and 0.40% copper equivalent were also not reported as highlights.

Sampling and Analysis Procedures

5kg samples were taken from each two metre interval. The samples are derived from riffle splitting each intercept. The samples were sent to Andes Analytical Assay Ltda (Chile) in Santiago for sample preparation and analysis. Duplicate samples were taken on a 1 in 20 basis.

Analysis was undertaken using fire assay with an atomic absorption spectrometry finish. Andes Analytical Assay Ltda (Chile) is an independent full service commercial laboratory accredited under ISO 9001:2008. Standard samples and repeat analyses were used by the laboratory to provide checks on the assay results.

For further information please contact:

Trevor Tennant – (Managing Director - Southern Hemisphere Mining) +56 (2) 474 5071

Media Enquiries – Nicholas Read (Read Corporate) + 61 (8) 9388 1474

– Clark Kent (Corporate Communications) + 1 (416) 883 3838

Neither the TSX Venture Exchange nor its Regulation Services Provider (as that term is defined in the policies of the TSX Venture Exchange) accepts responsibility for the adequacy or accuracy of this News Release. This News Release has been prepared by management and no regulatory authority has approved or disapproved the information contained herein.

Competent Person / Qualified Person Statement

Mr Ian Dreyer, Principal Geologist of Andes Mining Services, is a Chartered Professional Member of the Australasian Institute of Mining and Metallurgy, is a 'Competent Person' as defined in the 2004 Edition of the 'Australasian Code for Reporting of Exploration Results, Mineral Resources and Ore Reserves' and is a 'Qualified Person' under National Instrument 43-101 - 'Standards of Disclosure for Mineral Projects'.

Mr. Dreyer has reviewed the design and conduct of this resource drilling campaign, supervised the preparation of the technical information in this release and has the relevant experience and competence of the subject matter.

Mr. Dreyer consents to the inclusion of exploration results and other such information in this News Release in the form and context in which it appears.

