



Traka Resources Limited

ABN: 63 103 323 173

11 July 2012

Company Announcements Office
ASX Limited
Level 4, 20 Bridge Street
SYDNEY NSW 2000

Dear Sir/Madam

INVESTOR PRESENTATION

Attached is a copy of a presentation on the company's activities to be made to investors.

Yours faithfully

P C Ruttledge
Company Secretary



Company Profile
July 2012

Patrick Verbeek
Managing Director

TRAKA RESOURCES LIMITED



Disclaimer

This presentation has been prepared by **Traka Resources Limited** ABN 63 103 323 173 (**Traka**) for the sole purpose of providing financial, operational and other information to enable recipients to review the business activities of Traka. This presentation is not intended as an offer, invitation, solicitation or recommendation with respect to the purchase or sale of any securities. Nothing in this presentation should be construed as financial product advice, whether personal or general, for the purposes of Section 766B of the *Corporations Act 2001*.

This presentation may contain forward looking information, statements or forecasts that are subject to risks and other factors outside the control of **Traka**. Any forward looking information, statements or forecasts provided is/are considered reasonable in the circumstances and has/have been prepared in good faith and with all due care, but may differ materially from actual future results and performance. **Traka** and its affiliates, any of its directors, agents, officers or employees do not make any representation or warranty, express or implied, as to or endorsement of the accuracy or completeness of any information, statements or forecasts contained in this presentation, and they do not accept any liability for any statements made in, or omitted from, this presentation.

This presentation should not be relied upon as a representation of any matter that an investor should consider in evaluating the business activities of **Traka**. Investors must make and rely upon their own enquiries and due diligence in relation to the subject of this presentation and an investment in **Traka**. A potential investor must assess the merits or otherwise of an investment in **Traka** having regards to their own personal, financial and other circumstances.

The information in this presentation that relates to exploration results is based on information compiled by Mr Patrick Verbeek, a member of the Australasian Institute of Mining and Metallurgy . Mr Verbeek has sufficient experience which is relevant to the style of mineralisation under consideration and to the activity which he is undertaking to qualify as a Competent Person as defined in the 2004 edition of the "Australian Code for Reporting Exploration Results, Mineral Resources and Ore Reserves". Mr Verbeek consents to the inclusion in the presentation of the matters based on information in the form and context in which it appears.

Information included in the presentation is dated July 2012.

TRAKA RESOURCES LIMITED



Corporate Information & Capital Structure

DIRECTORS & MANAGEMENT

Long and successful resource industry experience

Neil Tomkinson - Non Exec. Chairman
(Lawyer)

Joshua Pitt - Non Exec Director
(Geologist)

George Petersons - Non Exec Director
(Prospector)

Patrick Verbeek - Managing Director
(Geologist)

CAPITAL STRUCTURE

Issued Shares	69,605,049
Top 20 shareholders	56%
Directors and Management Shareholding	25%
Market Cap @ 6 cents	\$4.2 million

TRAKA RESOURCES LIMITED



Traka – Operational Strategy



- Efficient concentration of effort to a few projects at a time
- Expert project knowledge
- Joint Ventures and Strategic Alliances to assist with resources and funding
- **Musgrave Project** - Principal focus. Very large, strategic and dominant land portfolio including 5 Joint Ventures
- **Ravensthorpe Project** - Pb and Zn potential to be drilled. 3 Joint Ventures

MUSGRAVE PROJECT - Overview

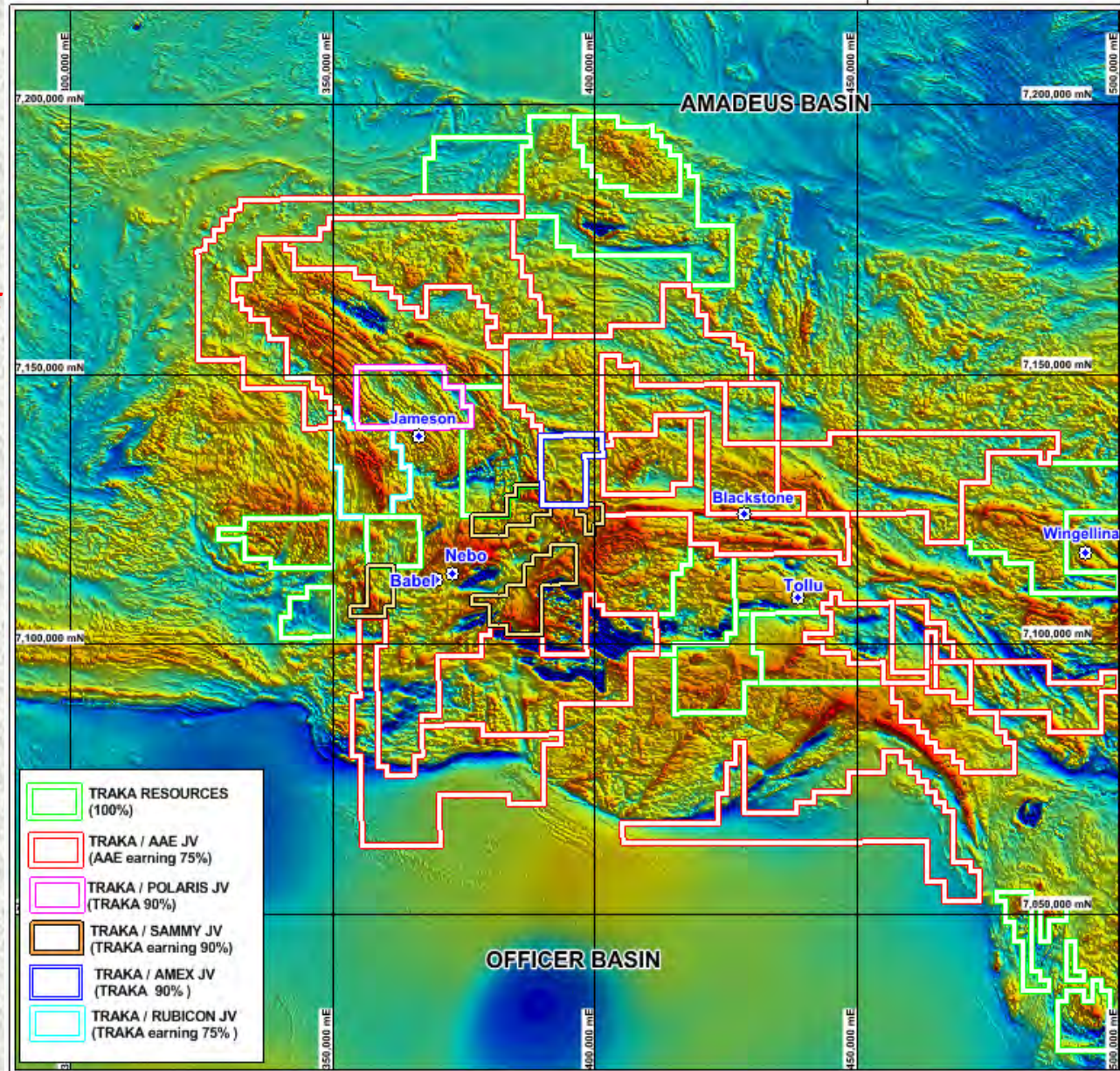
Highly prospective
Proterozoic Terrain

Discovery history
Babel Nebo – Cu, Ni, PGE
*(392mt @ 0.3%Ni, 0.3%Cu, 0.18g/t
PGE)*
Wingellina (Ni Laterite)
(180mt @ 1.0% Ni, 0.07% Co)

Aboriginal Heritage
hindered exploration in the
past

First mover opportunity

Major Joint Venture with
Anglo American



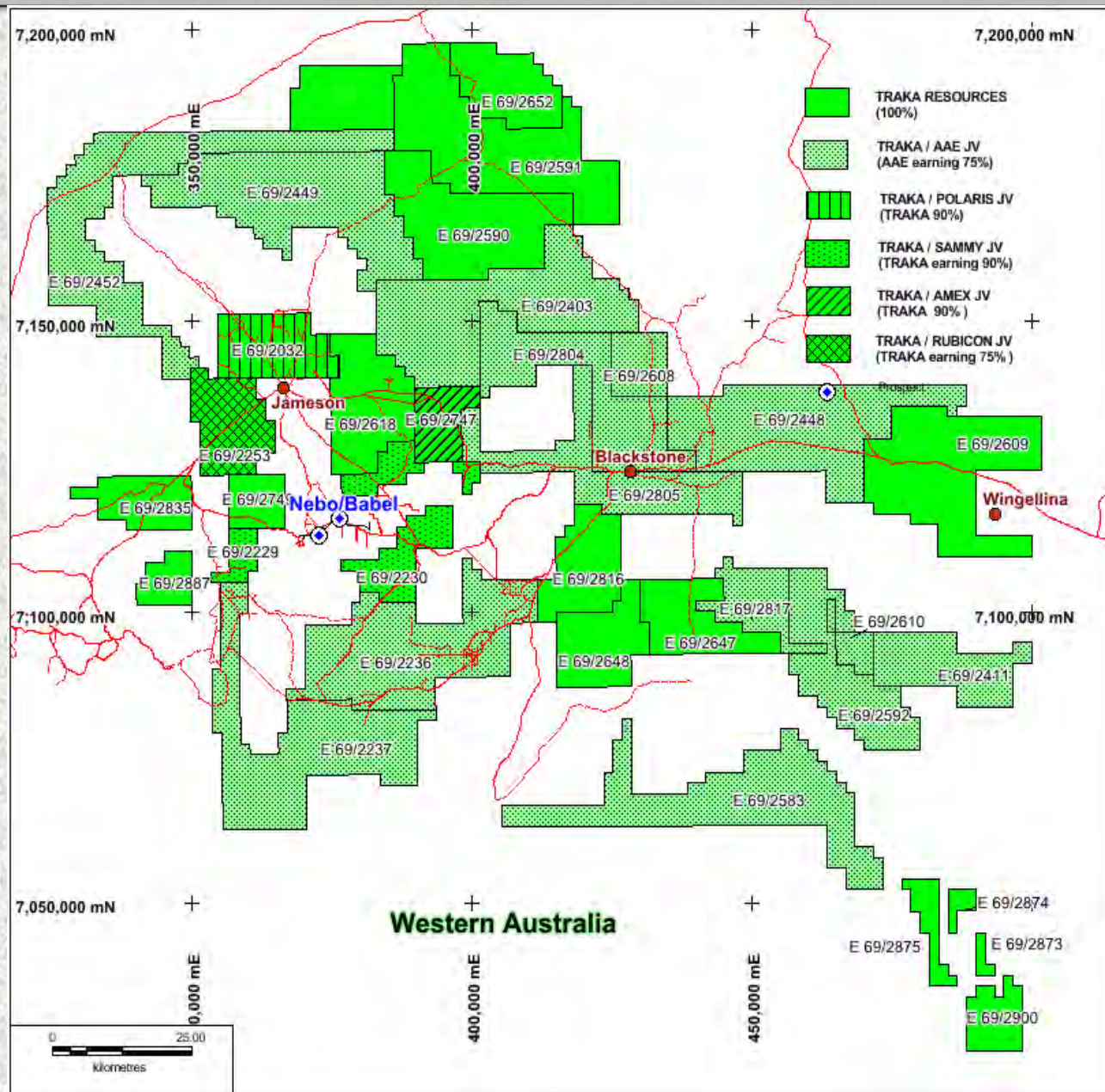
MUSGRAVE PROJECT – Tenure

Traka 16 tenements plus 4 JV (5100 sq km)

- Traka90% / Polaris 10%
- Traka90% / Amex 10%
- Traka/Sammy. Traka Option to earn 90%
- Taka/Rubicon. Traka earning 75%

Anglo American /Traka JV -14 tenements (4700sq km)

- Anglo earning 75% by \$27m expenditure
- Traka Free Carried to BFS



Mineral Targets

MAGMATIC Cu, Ni, PGE (Voisey Bay - Babel Nebo style)

Hosted in "Alcurra" intrusives of Giles Complex
Untested in Traka portfolio

TITANIFEROUS MAGNETITE V₂O₅, TiO₂, PGE (Kalplats style)

Jameson - largest layered intrusive (+ 100km strike potential)
Highest Vanadium, Titanium and PGE grades (No Australian equivalent)
Scope for very large project development

IOCG Cu, U (Olympic Dam style)

Late phase A Type Granites – mineralisation in deep structures/breccia and pluton margins

PLATINUM Pt, Pd and Au (Platreef style)

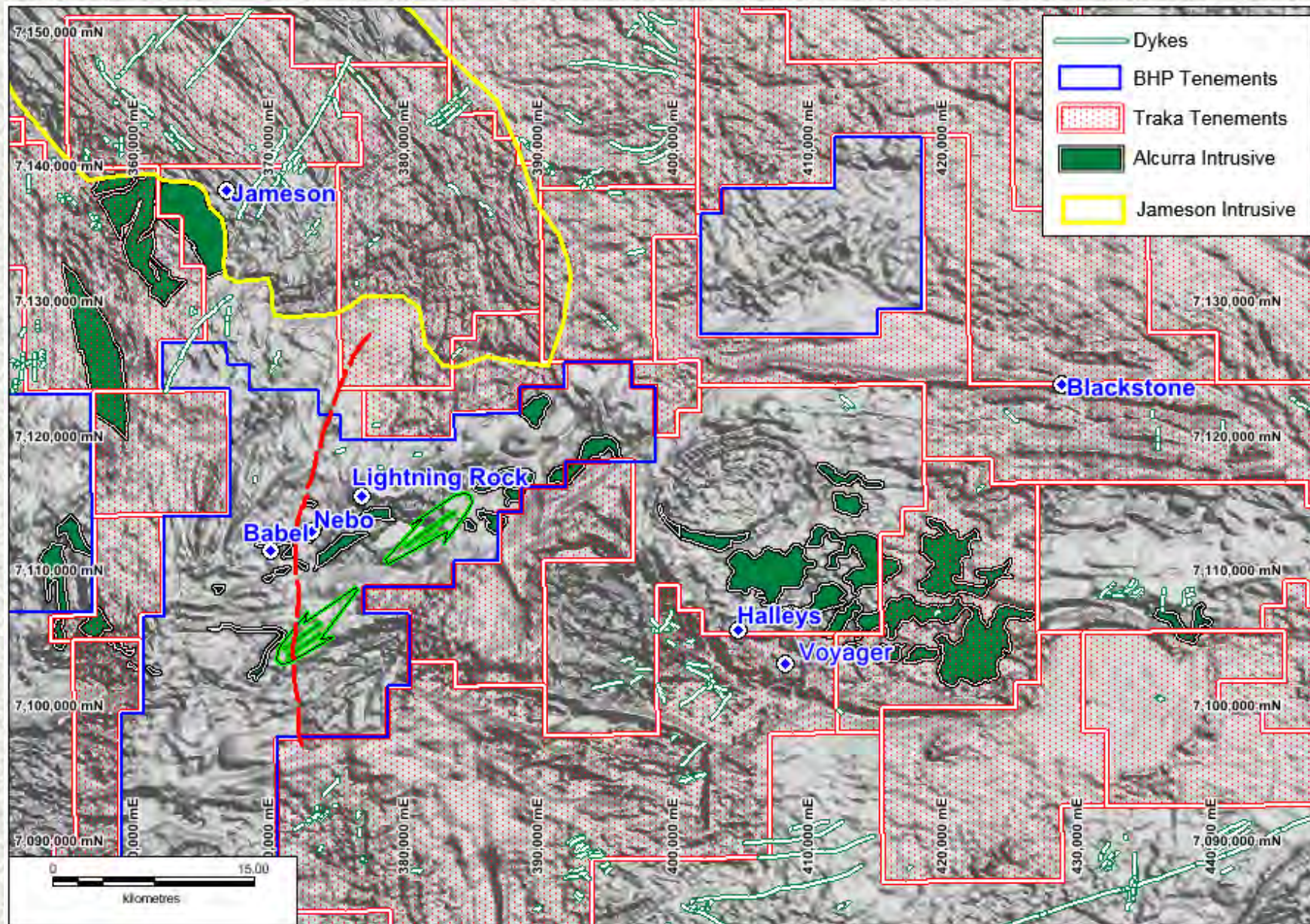
Untested mineralised basal contact zone

HYDROTHERMAL Cu (Tollu Mining Centre style)

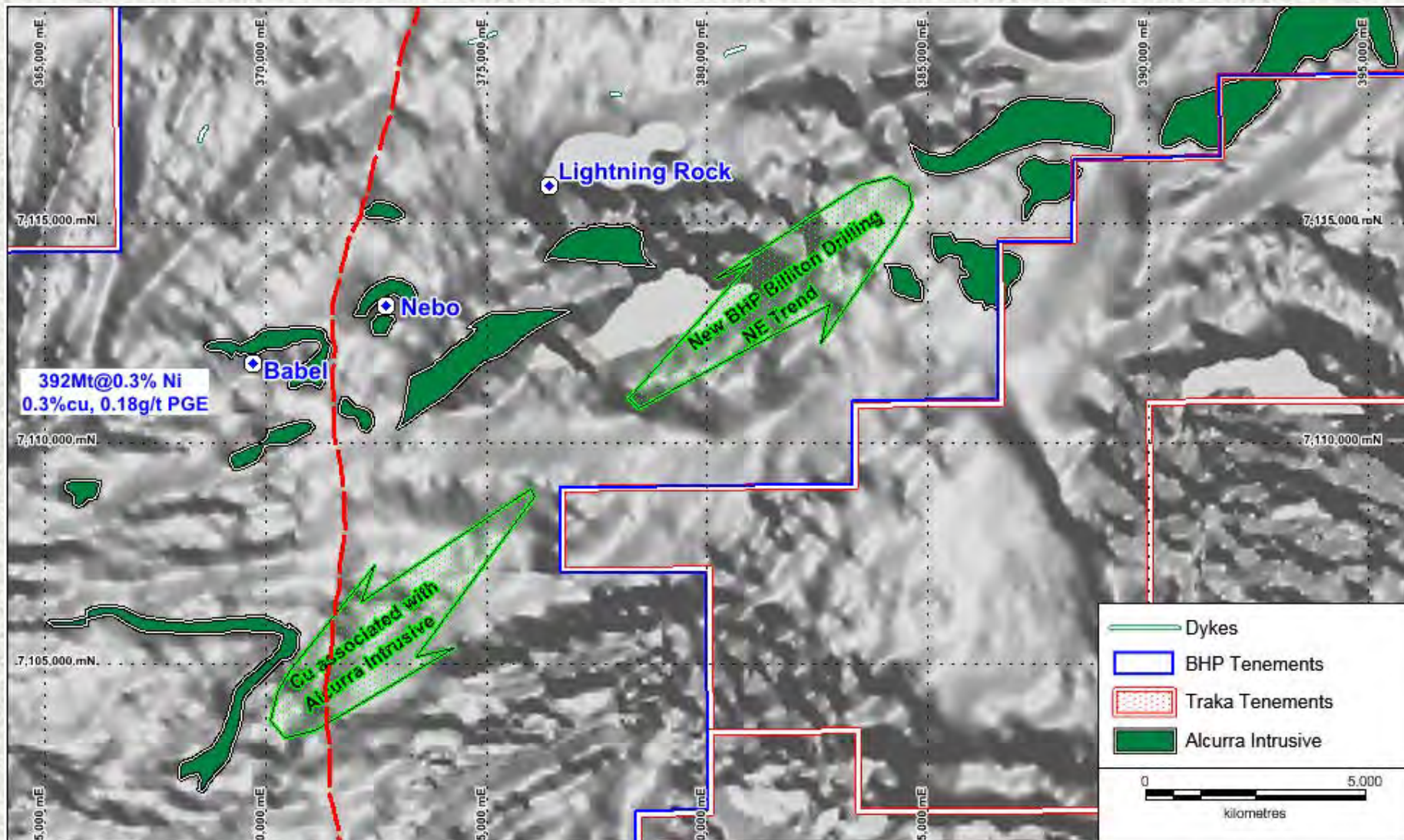
Tollu Fault into Traka tenements

REE & STRATABOUND Cu, Pb, Zn No previous exploration

“Alcurra” – magmatic Cu, Ni and PGE host

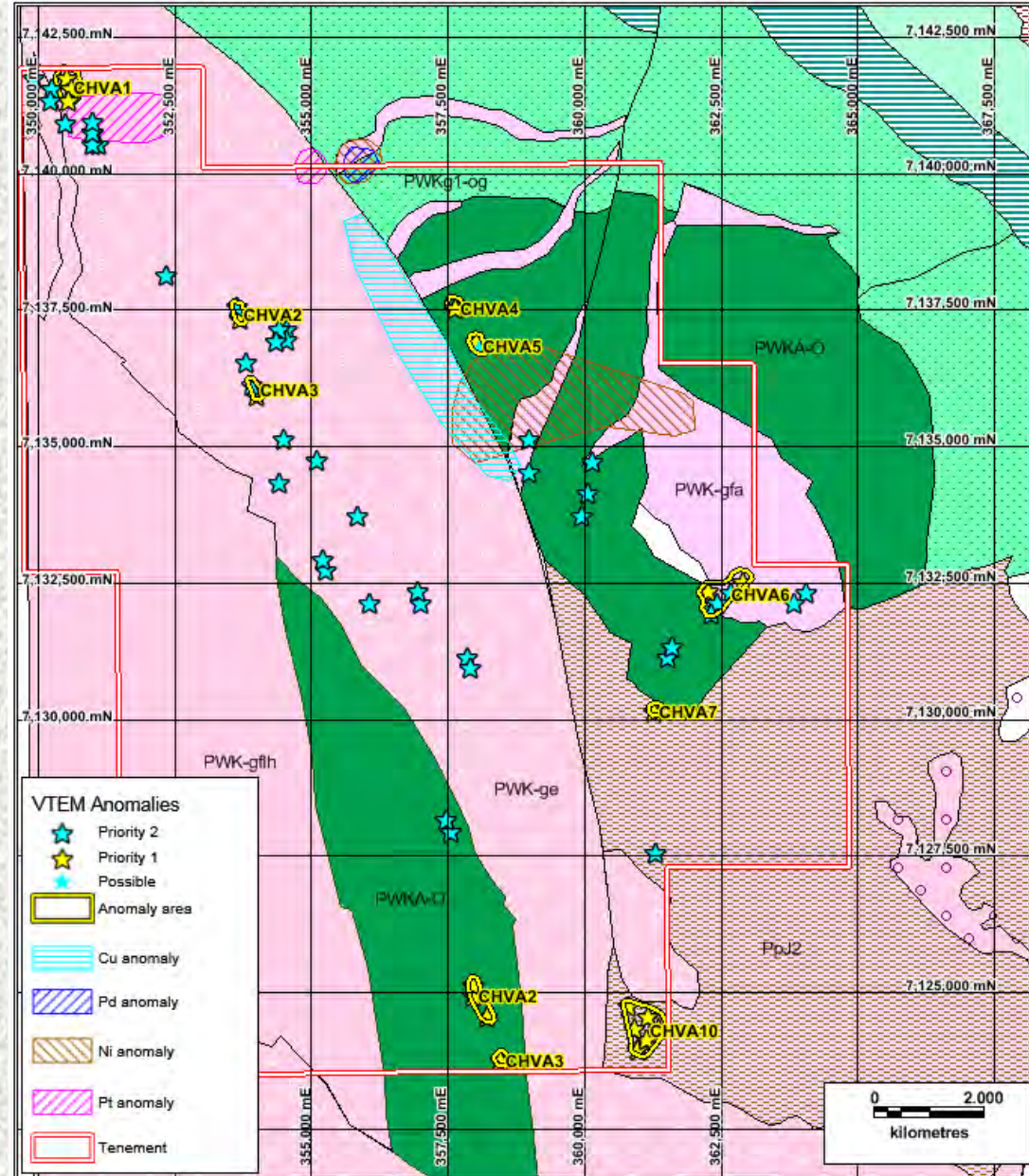


“Alcurra” – magmatic Cu, Ni and PGE host

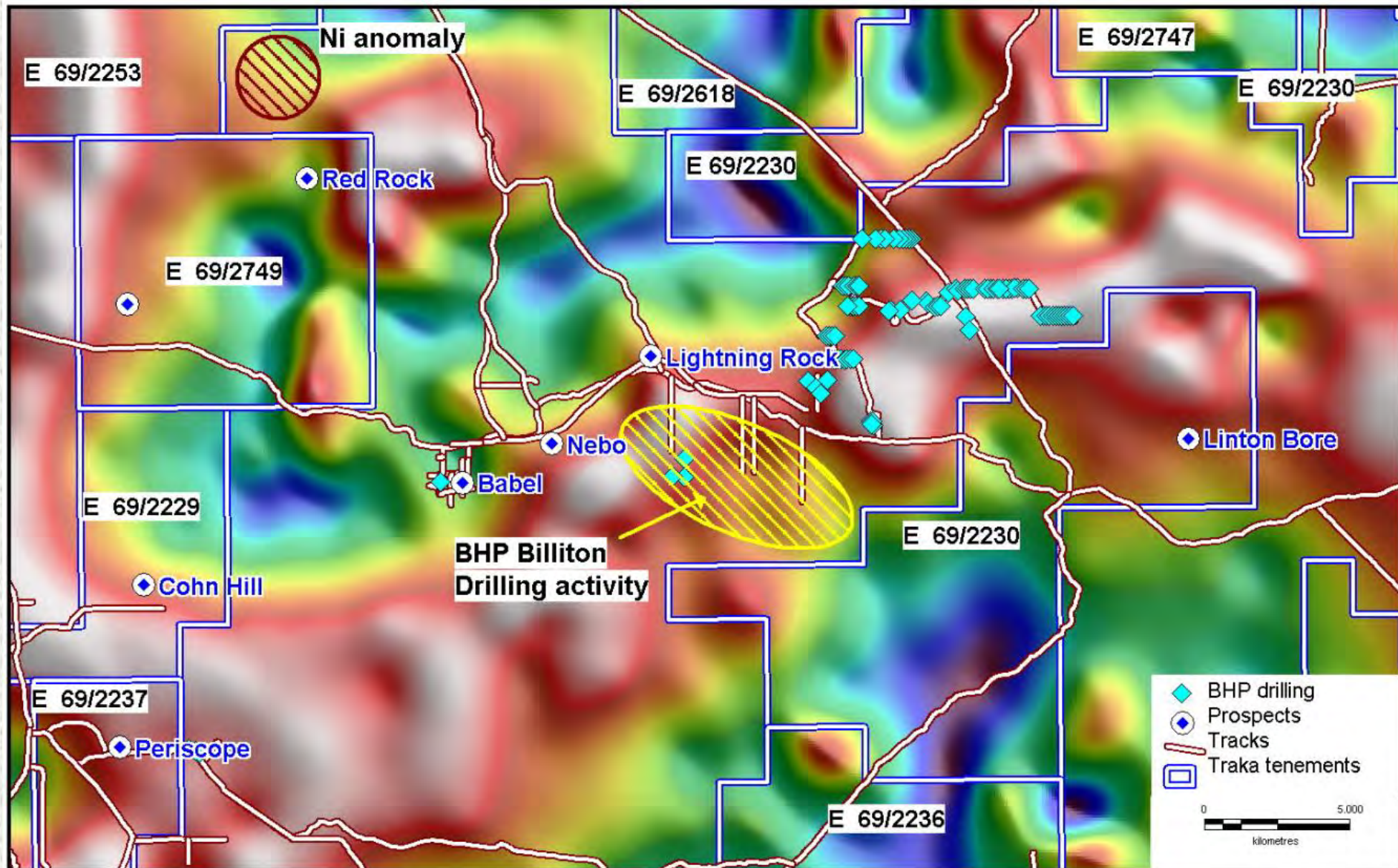


Alcurra and VTEM targets – Caesar Hill

- 10 Priority VTEM targets (CHVA1 to 10)
- New untested Alcurra Intrusives
- Cu and Pt geochemical anomalies



BHP Billiton drilling - gravity image



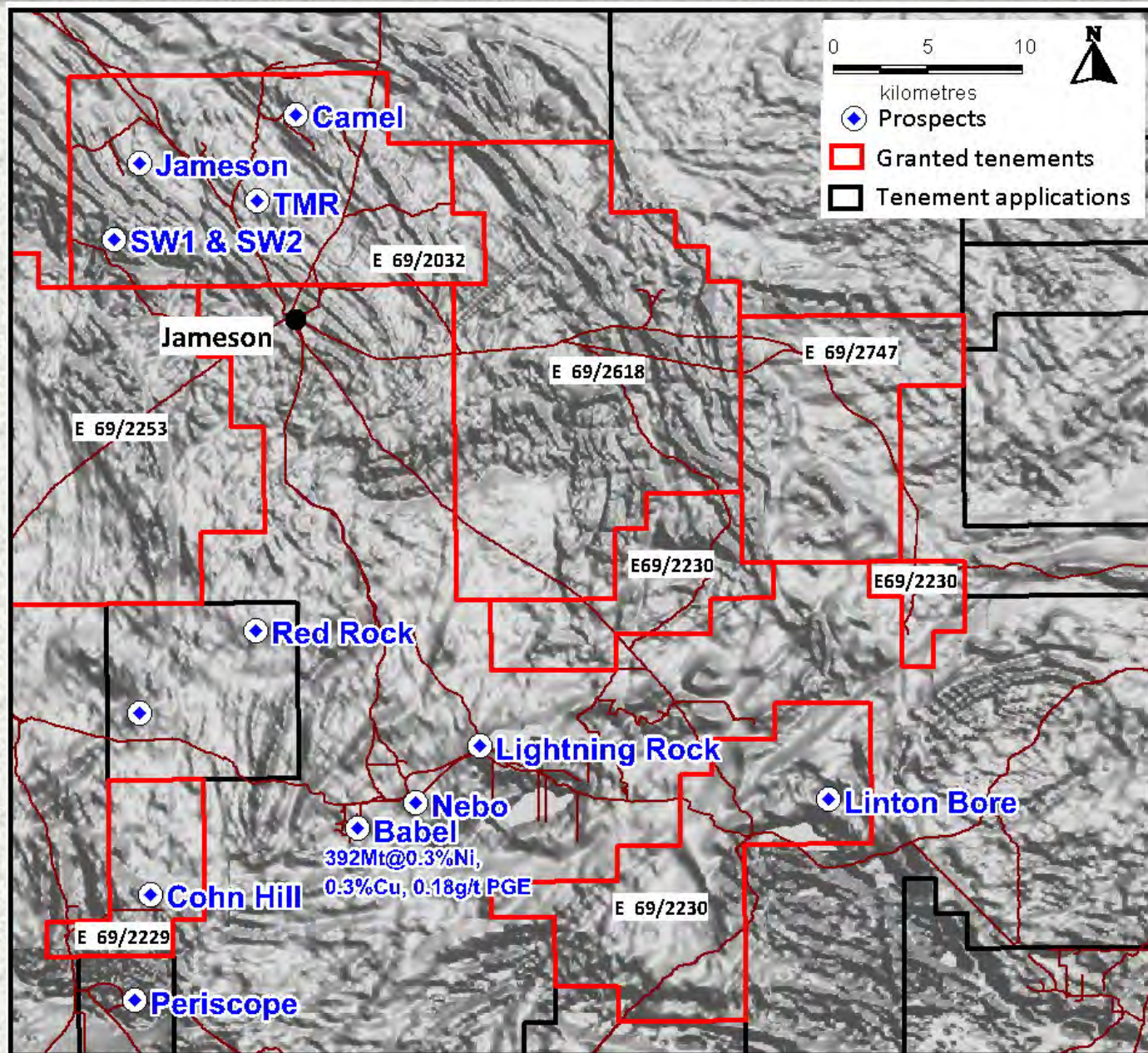
BABEL - NEBO STATUS

- **WMC DISCOVERY 2000**
1.2 million tonnes Cu + 1.2 million tonnes Ni + PGE
- **BHP BILLITON 2005**
June 2012 completed 3 year intensive project exploration –drilling, geophysics
- **NEW Cu DISCOVERIES IN PROJECT AREA**
Targets near Traka tenement boundaries
- **GSWA MAPPING 2004 – PRESENT**
Late phase Alcurra Intrusives of Giles Complex host Cu + Ni + PGE mineralisation in Musgraves
- **PROJECT FUTURE (?)**
Drilling stopped May 2012
Exploration camp dismantled

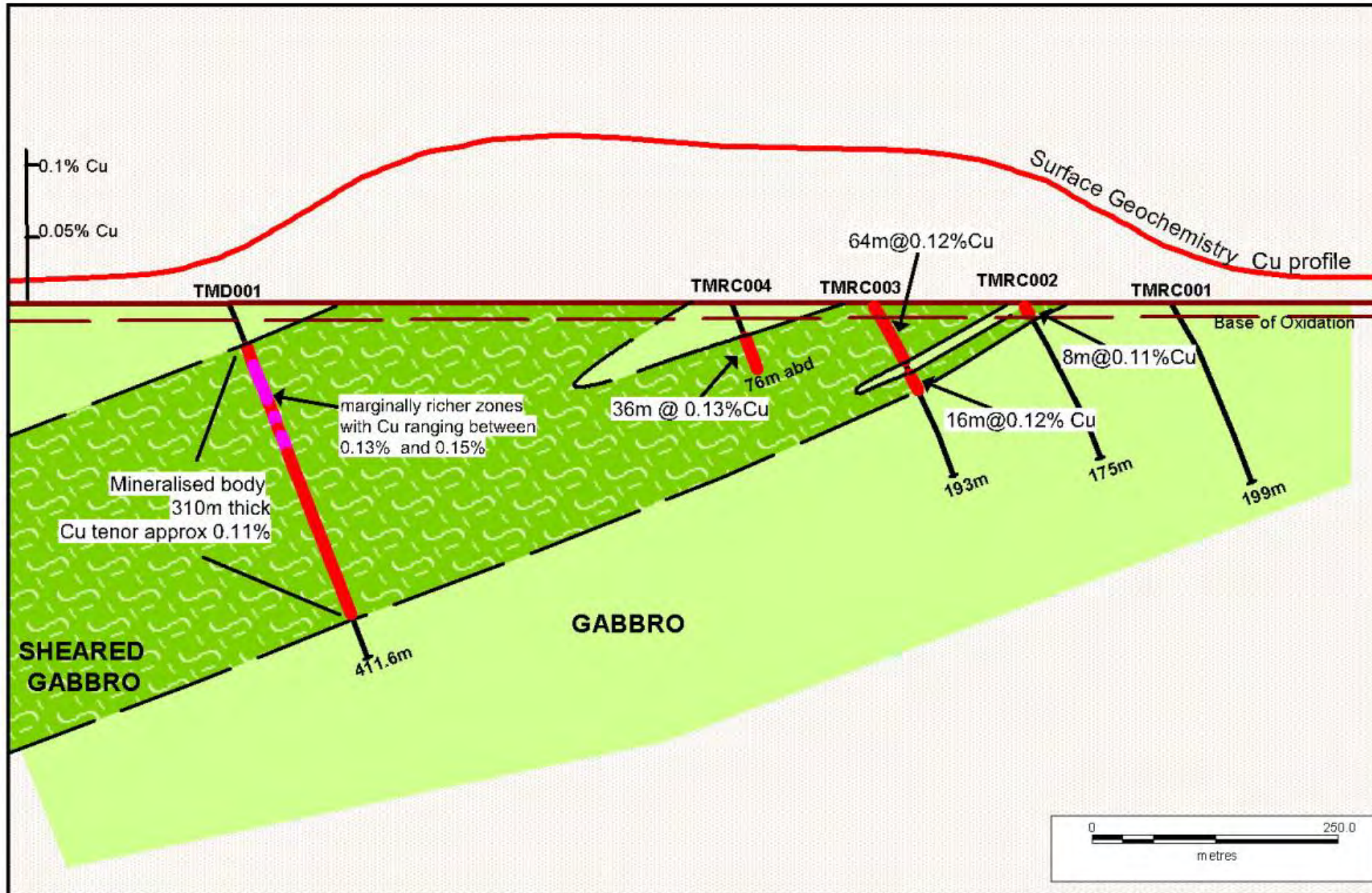
***BHP BILLITON Exploration
160 man camp***

JAMESON — Magmatic Cu, Ni, PGE & TMR V₂O₅, TiO₂, PGE

- Drill ready targets
- VTEM and Geochem anomalies
- Access granted. Heritage completed
- Strategic and prospective holding around Babel Nebo
- 50% of regional TMR potential
- TMR - high grade and scope for large tonnes



Jameson Intrusive – Camel Prospect



Titaniferous Magnetite Rock (TMR)

Rock-chip average

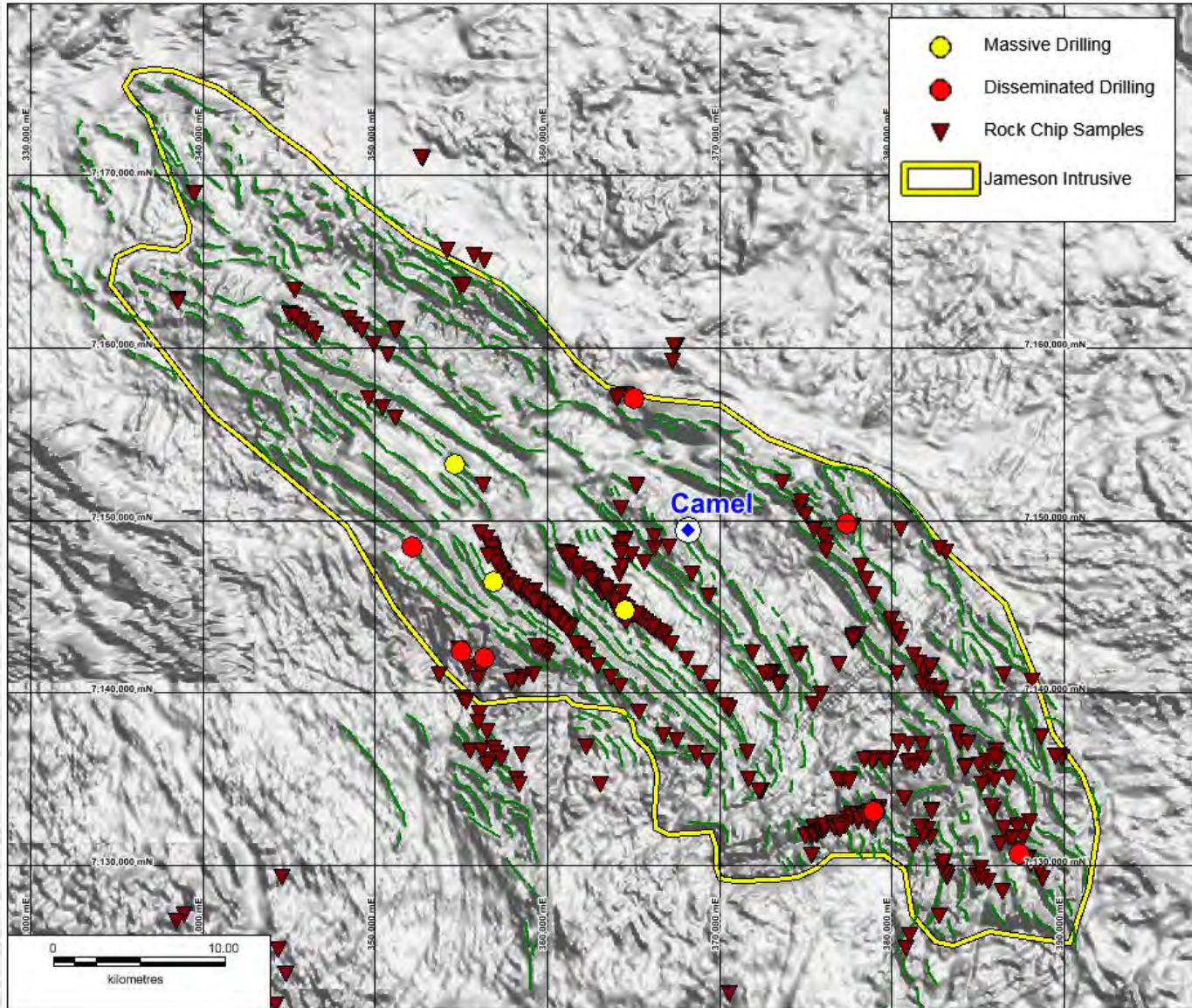
46% Fe, 18% TiO₂, 0.82% V₂O₅

Drilling average for disseminated magnetite style

27% Fe, 9.5% TiO₂, 0.28% V₂O₅

Drilling average for massive magnetite style

32% Fe, 15.8% TiO₂, 0.67% V₂O₅



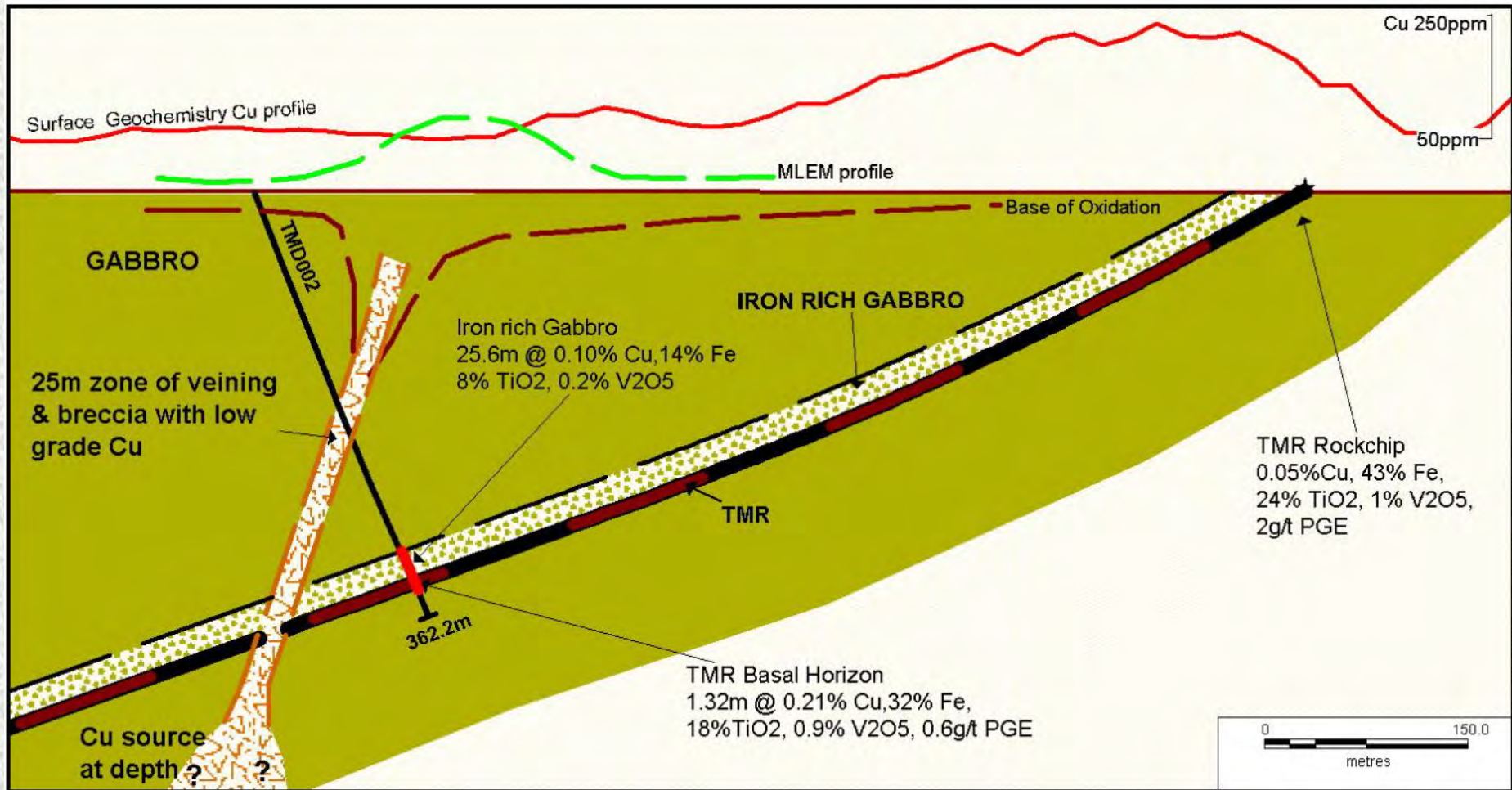
Jameson Intrusive & TMR

- TMR horizons account for many geochemical anomalies in the layered Jameson Intrusive

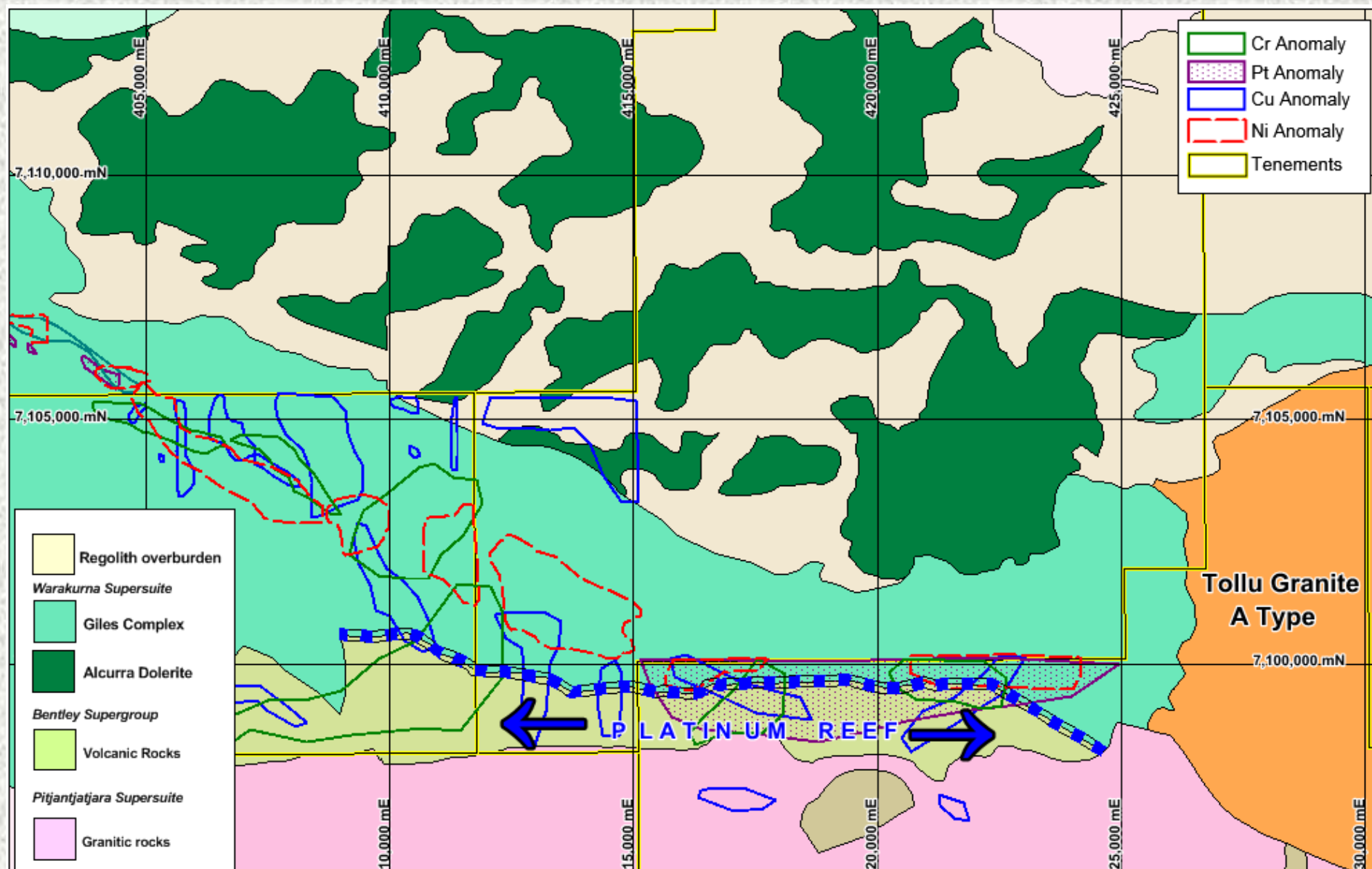


- EM anomaly at Jameson Prospect related to Hydrothermal Cu and structures (not TMR)
- More Hydrothermal Cu in the region

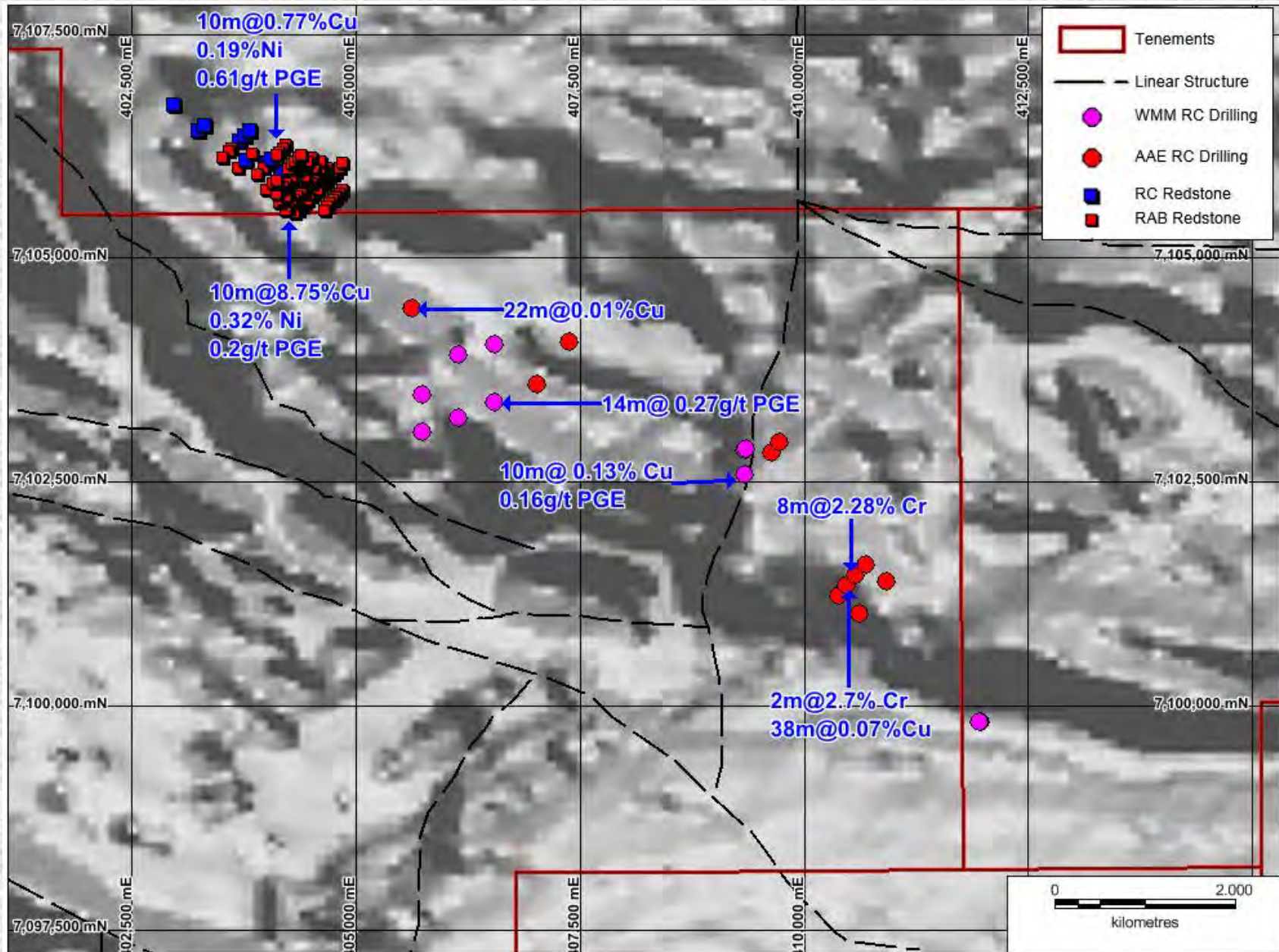
Jameson Prospect



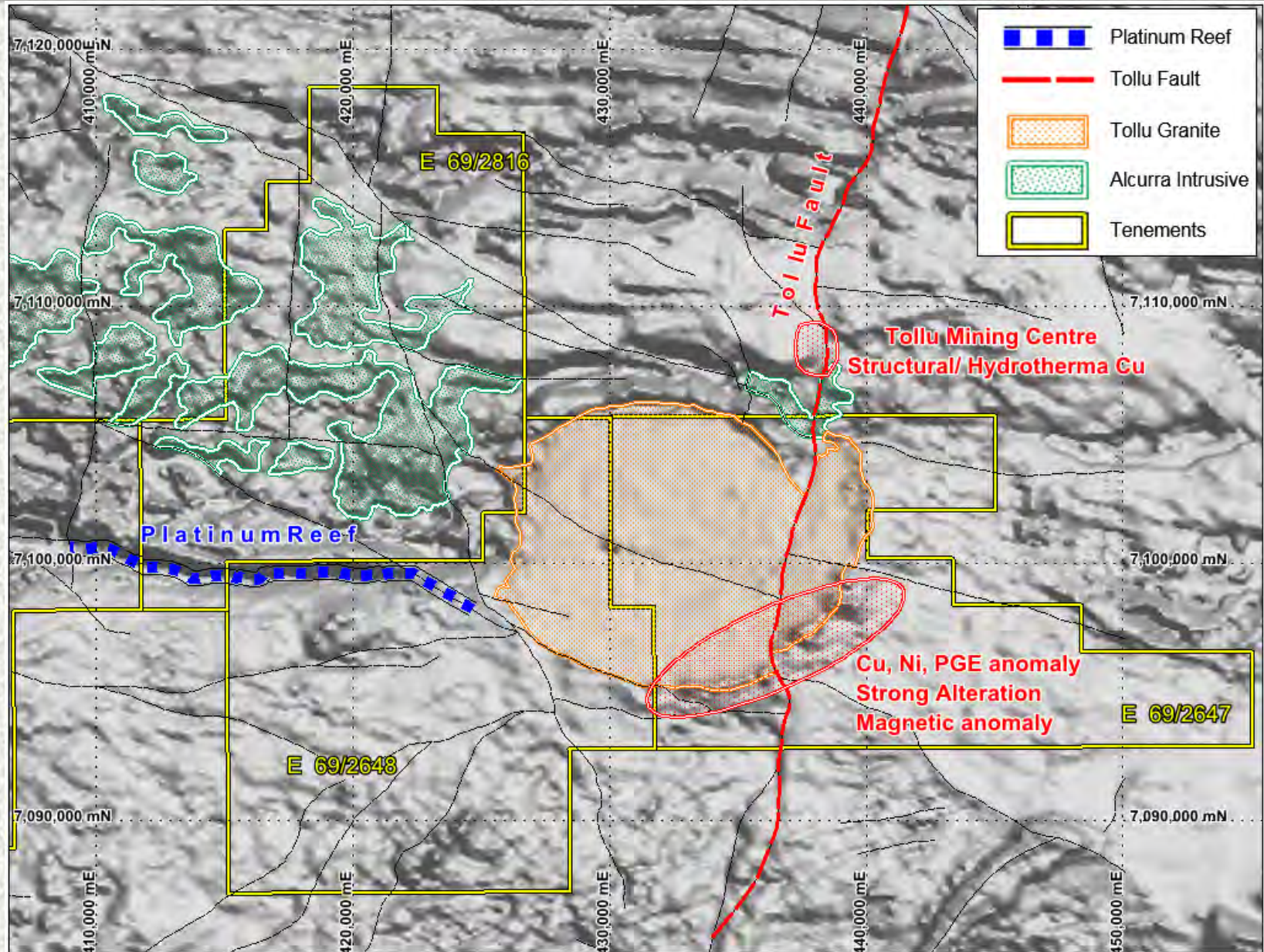
15km - Platinum Reef potential on basal contact



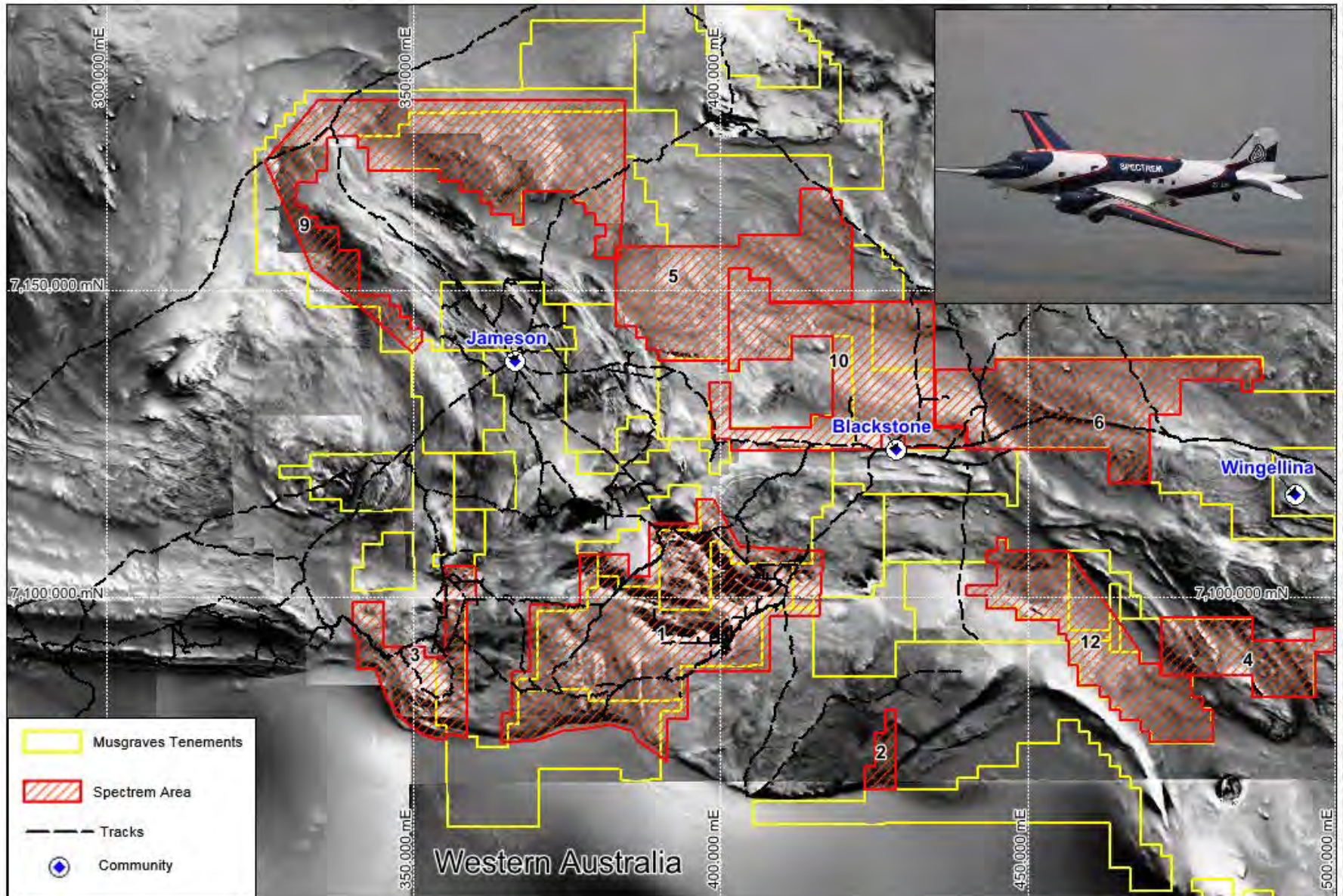
Araplat Trend – key Pt contact zone not drilled



Araplat Trend – key Pt contact zone not drilled

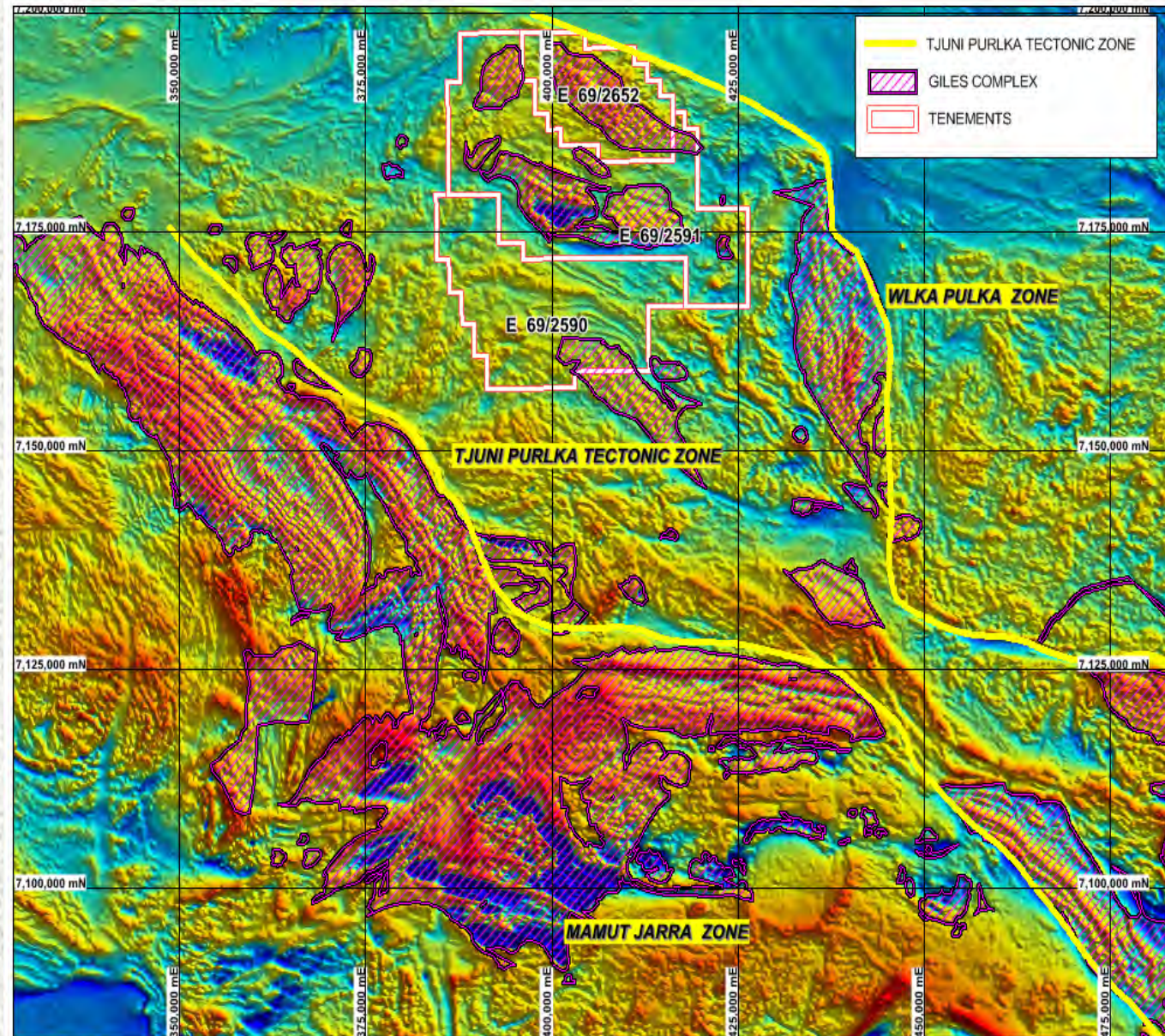


Anglo American - Spectrem

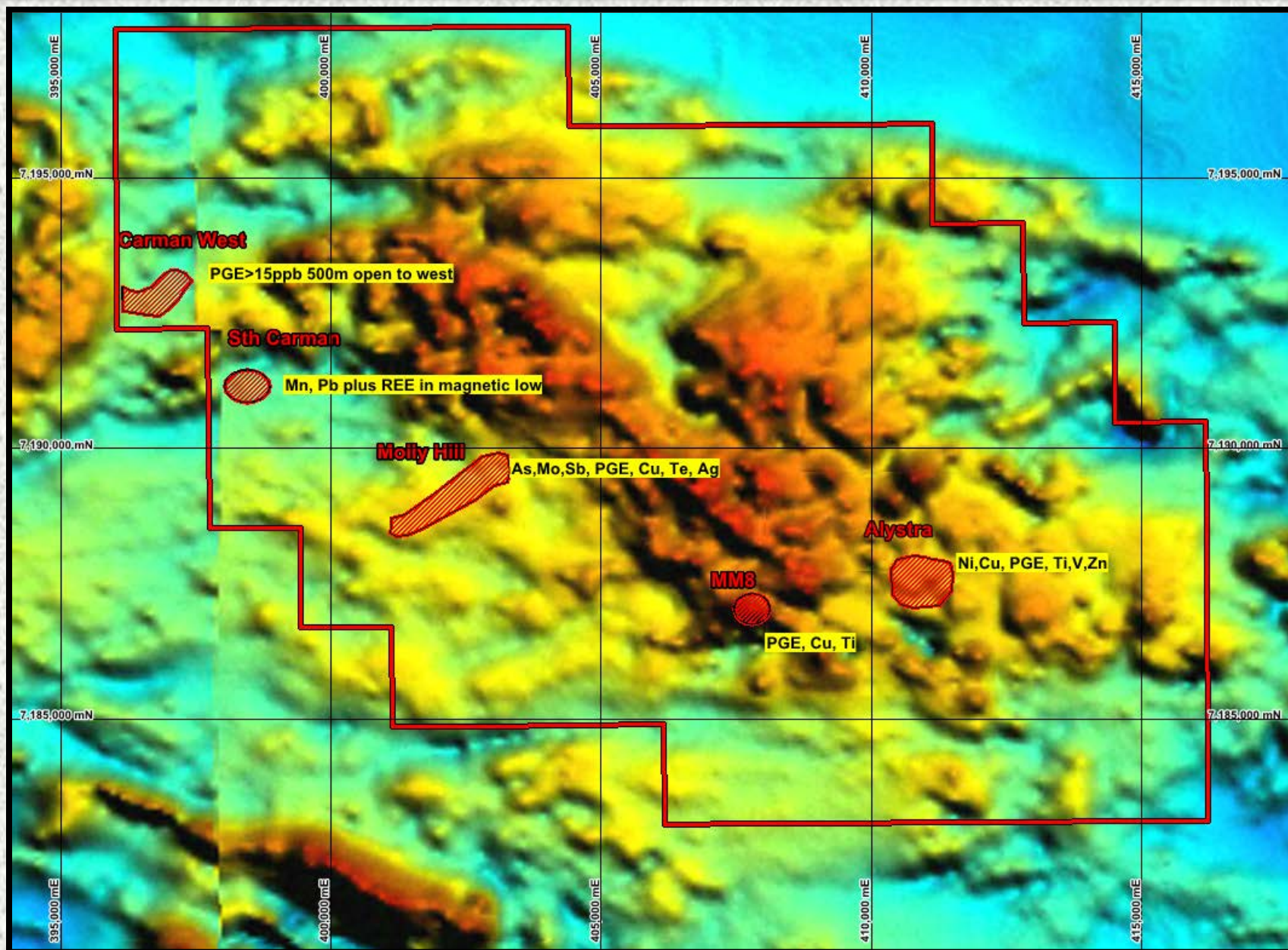


Mt Muir – aeromagnetic image and location

- Giles rocks in Tectonic Zone
- Late phase A Type Granites
- Cu, Ni, PGE geochemical anomalies
- REE anomaly



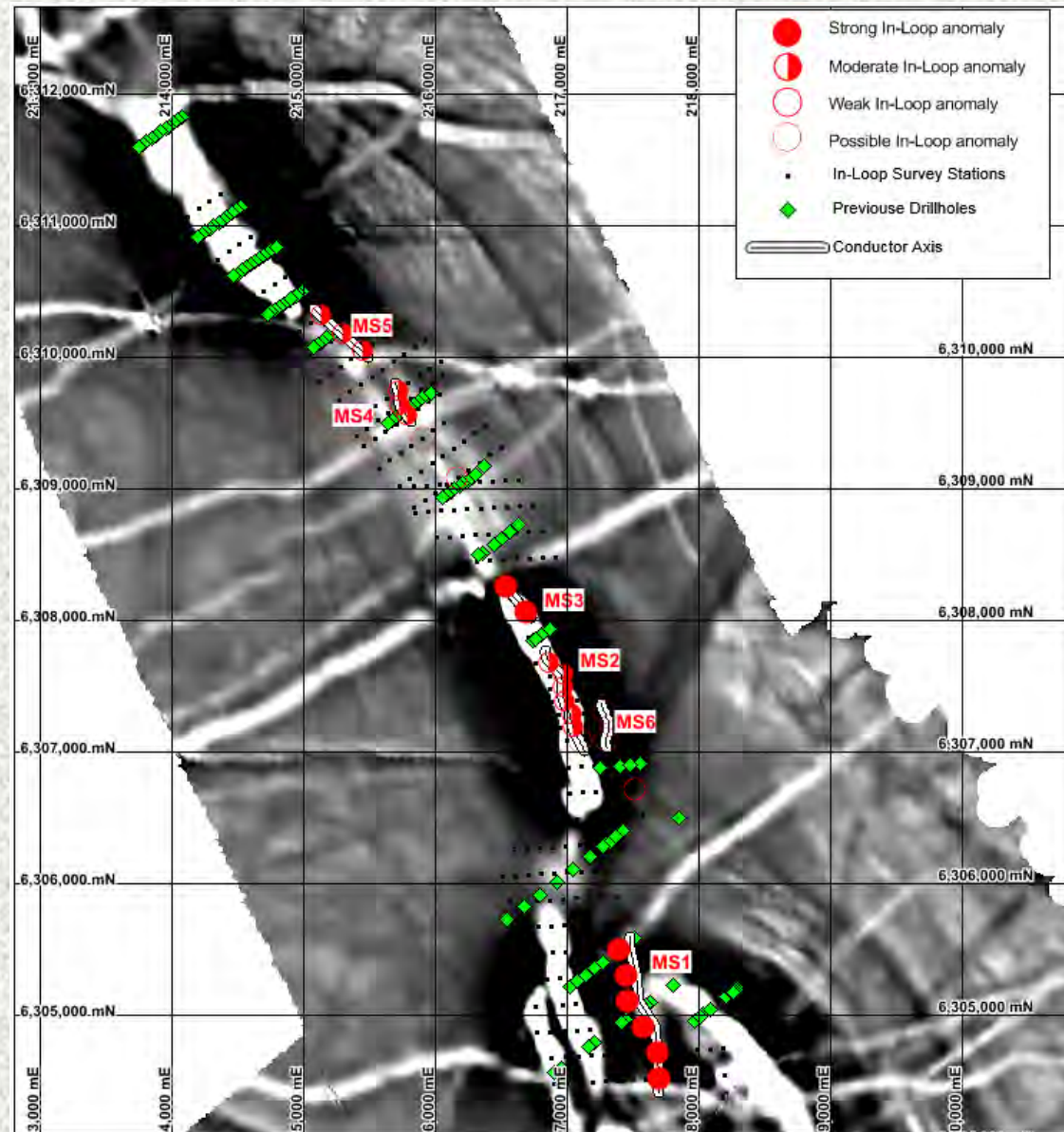
Mt Muir - Geochemical anomalies



RAVENSTHORPE PROJECT

Mt Short Base Metal Project

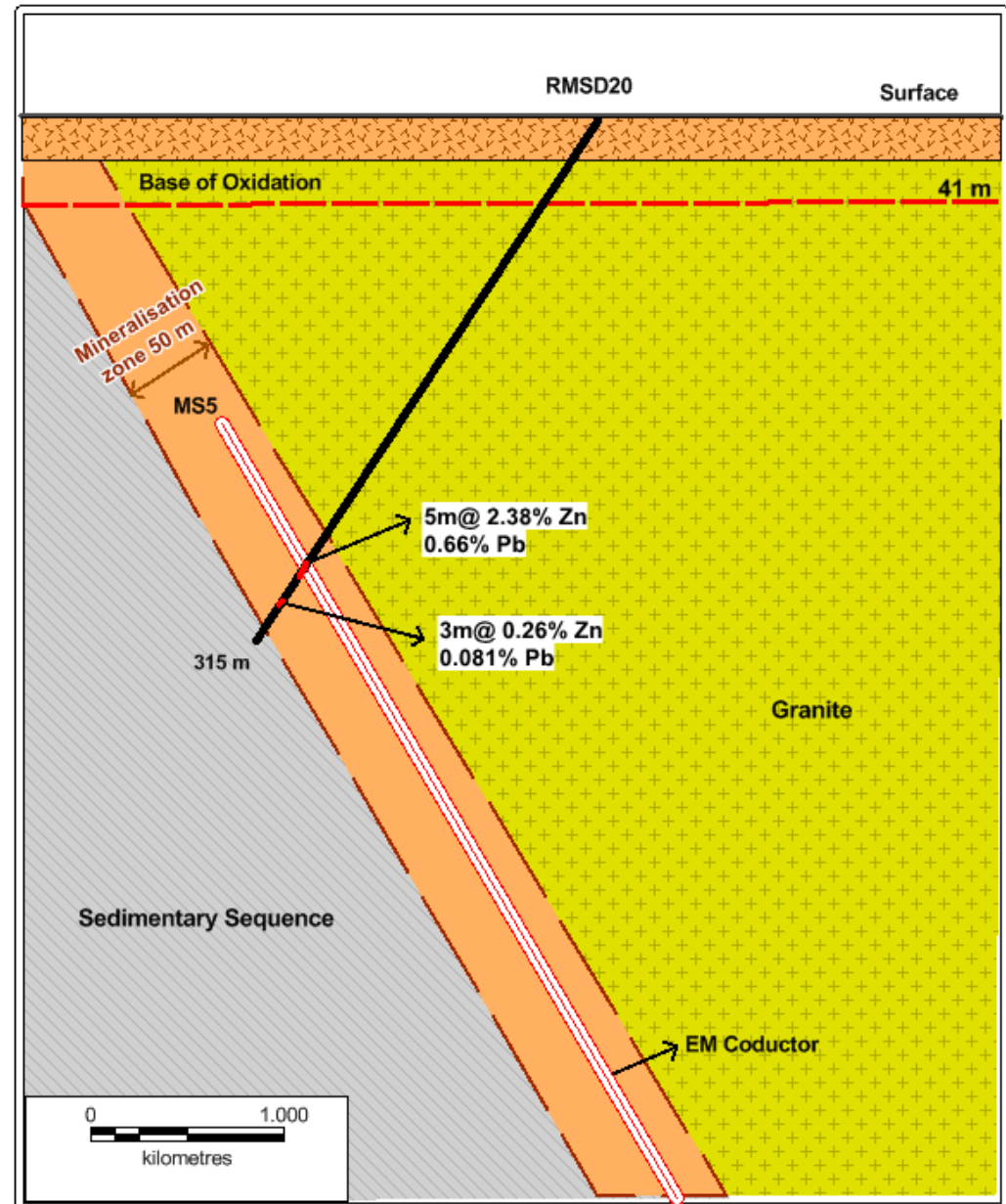
- 8km long horizon on northern extension of Ravensthorpe Greenstone Belt
- Pb, Zn and Cu geochemical anomalism coincident with EM targets
- Three of 5 targets drilled
- Off-hole EM targets suggests main mineralised body to side



RAVENSTHORPE PROJECT

Mt Short Base Metal Project

- Pb and Zn dominant
- Stratabound high metamorphic grade sedimentary rock host
- No surface expression
- All targets on farming land crop harvested











Company Profile
July 2012

Patrick Verbeek
Managing Director

TRAKA RESOURCES LIMITED

