



TRAFFORD
RESOURCES LTD

AMEC CONVENTION 2012

Ian Finch

Managing Director

www.traffordresources.com

DISCLAIMER

This presentation does not purport to provide all of the information an interested party may require in order to investigate the affairs of Trafford Resources Limited (Trafford) nor shall it be construed as a solicitation to buy or sell Trafford securities, or to engage in or refrain from engaging in any financial transaction. In preparing this presentation Trafford did not take into account the investment objectives, financial situation and particular needs of the individual investors.

Before making an investment decision on the basis of this presentation, the investor needs to consider, with or without the assistance of a financial advisor, whether the investment is appropriate in light of their particular investment needs, objectives and financial circumstances.

This presentation is based on internal company reports and technical information believed to be reliable but Trafford does not make any representation or warranty to its accuracy, completeness or currency. Trafford accepts no obligation to correct or update the information or opinions expressed in it. Opinions expressed are subject to change without notice and accurately reflect the views of Trafford at the time of presenting.

This presentation has originated from Trafford Resources Limited.

The information that relates to exploration targets, exploration results and drilling data is based on information compiled by Ian Finch, who is a member of the Australian Institute of Resources and Metallurgy and who has more than five years experience in the field of activity being reported on. Mr Finch is the Managing Director of the Company.

Mr Finch has sufficient experience which is relevant to the style of mineralisation and type of deposits under consideration and to the activity which he is undertaking to qualify as a competent person as defined in the 2004 Edition of the 'Australasian Code for Reporting of Exploration Results, Minerals Resources and Ore Reserves.

Mr Finch consents to the inclusion in the presentation of the matters based on his information in the form and content in which it appears.

CORPORATE PROFILE

Shares on Issue

85.3 Million

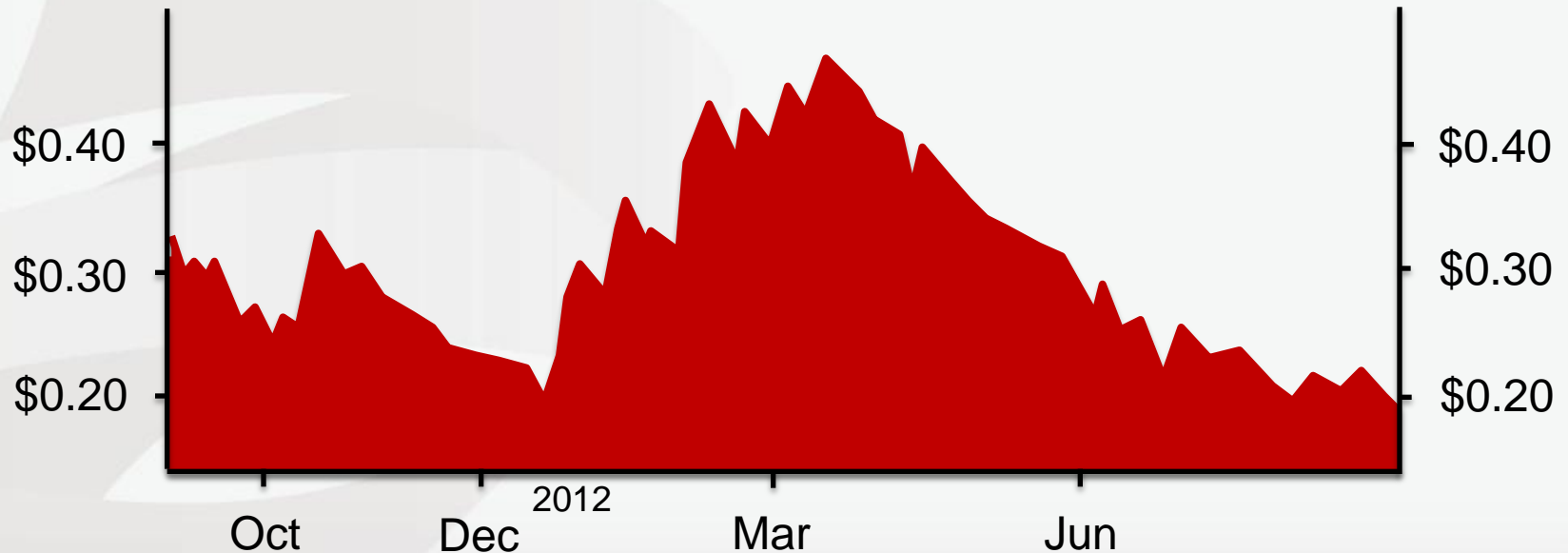
Market Capitalisation

\$14.5 Million

Cash

\$5.0 Million*

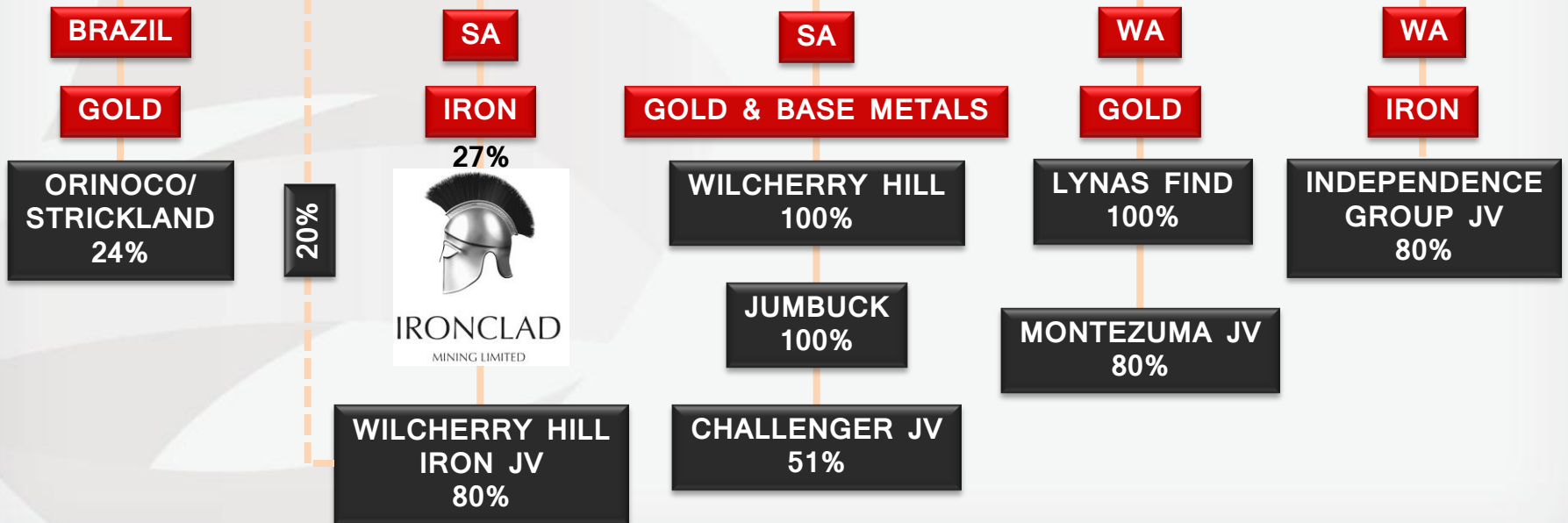
*receivables \$1.8M



STRUCTURE



TRAFFORD



STRATEGY



TRAFFORD

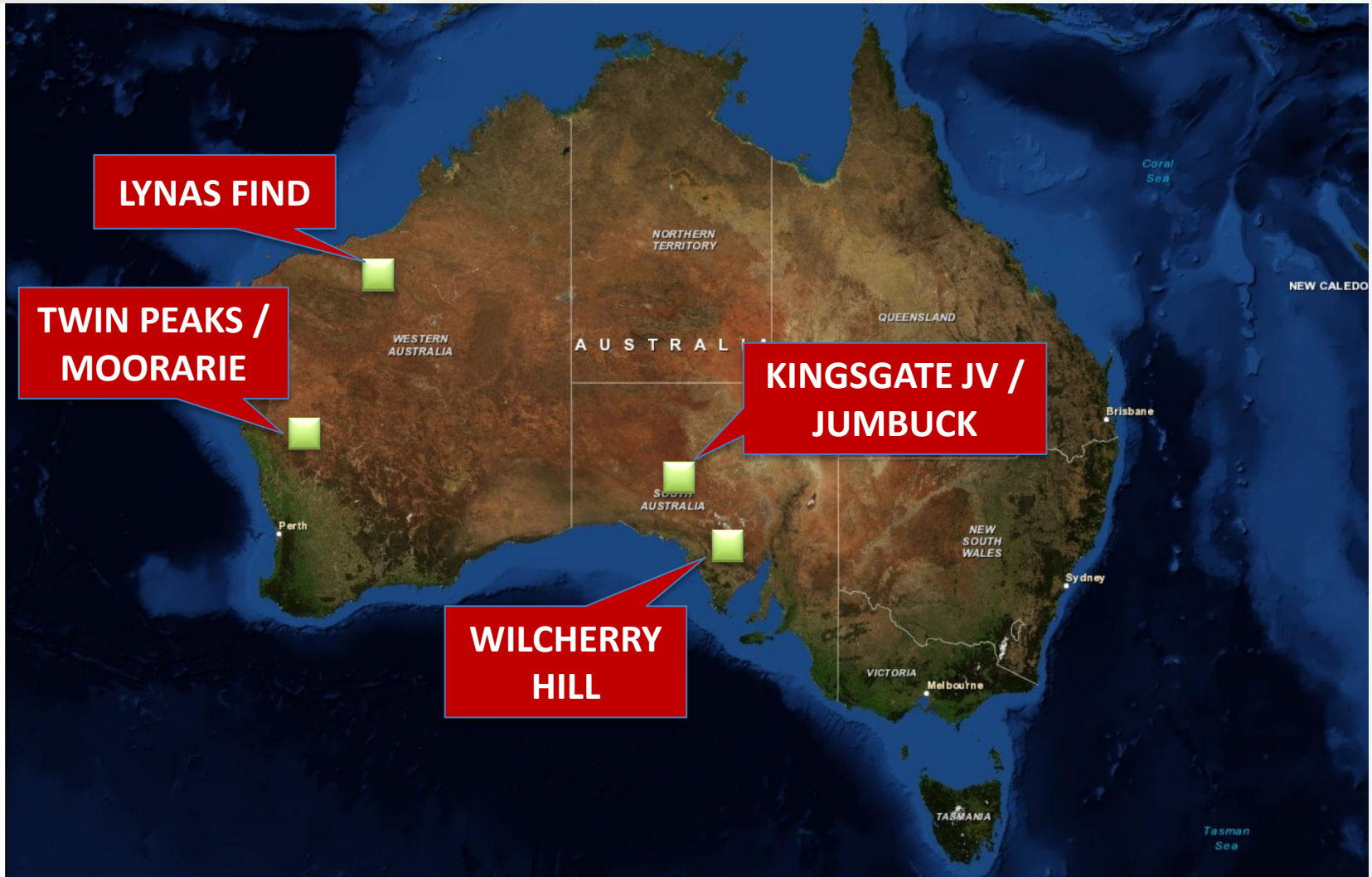
OVERSEAS

GOLD / SILVER

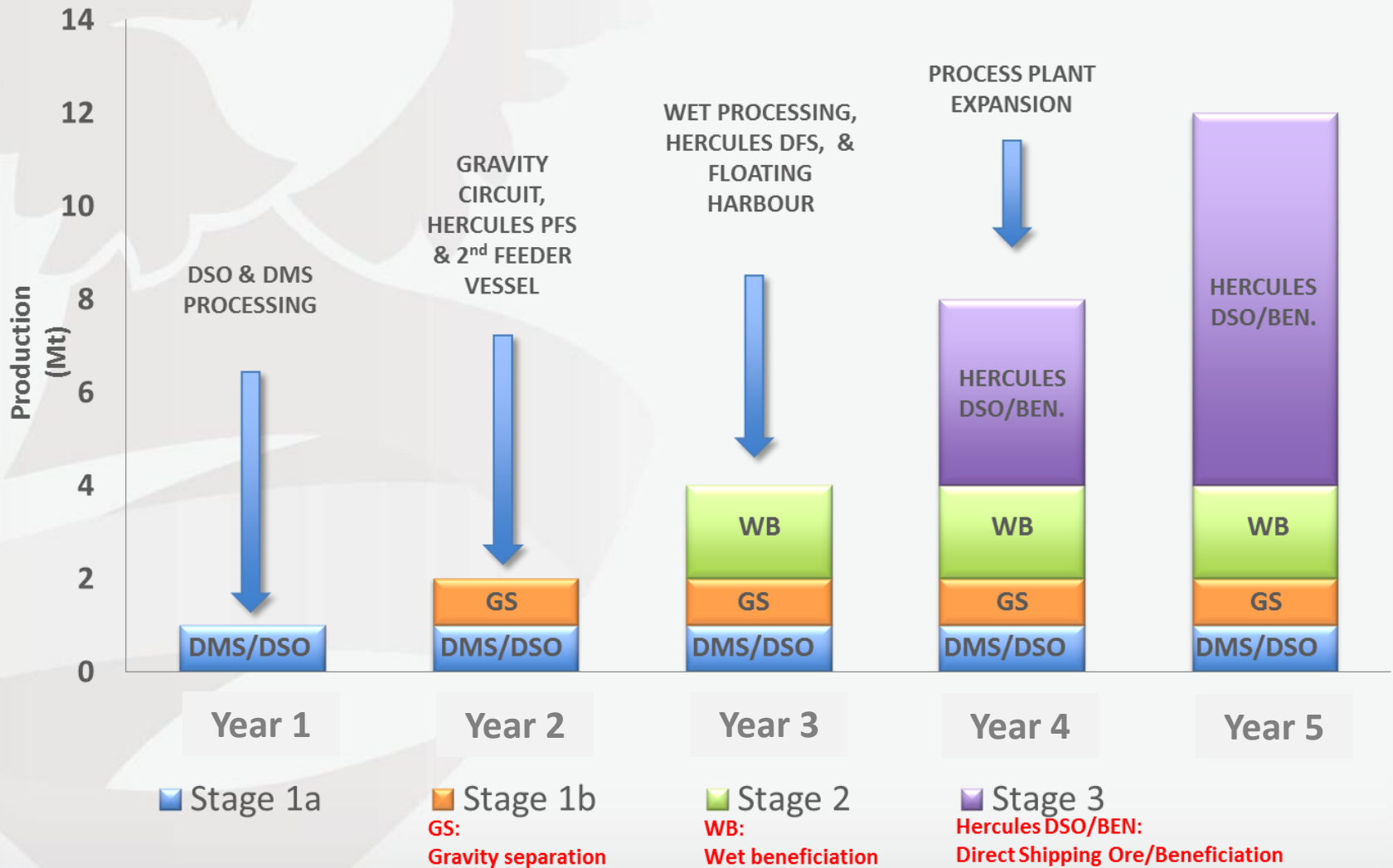
IRON ORE

BASE METALS

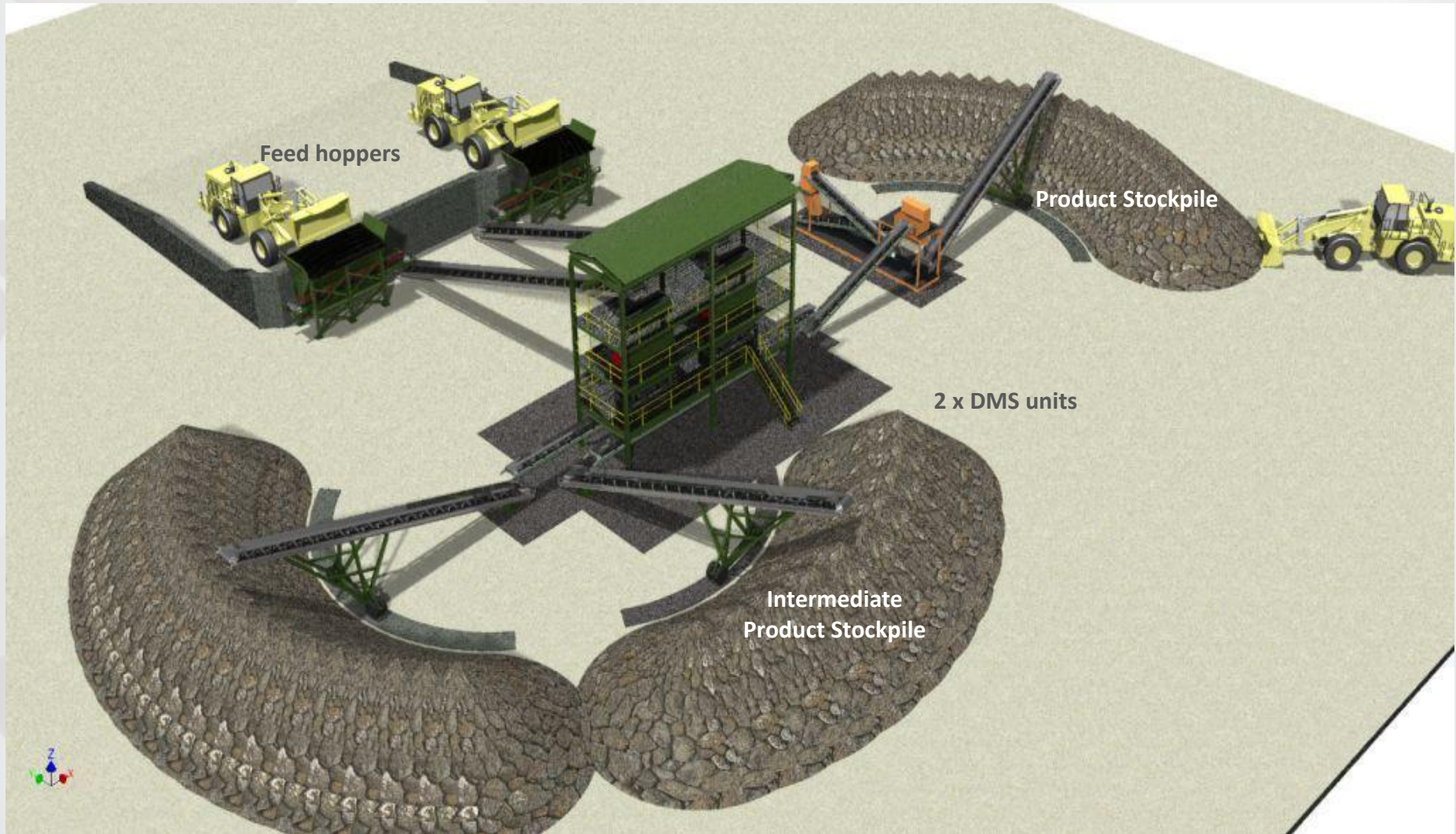
AUSTRALIAN PROJECTS



IRONCLAD MINING



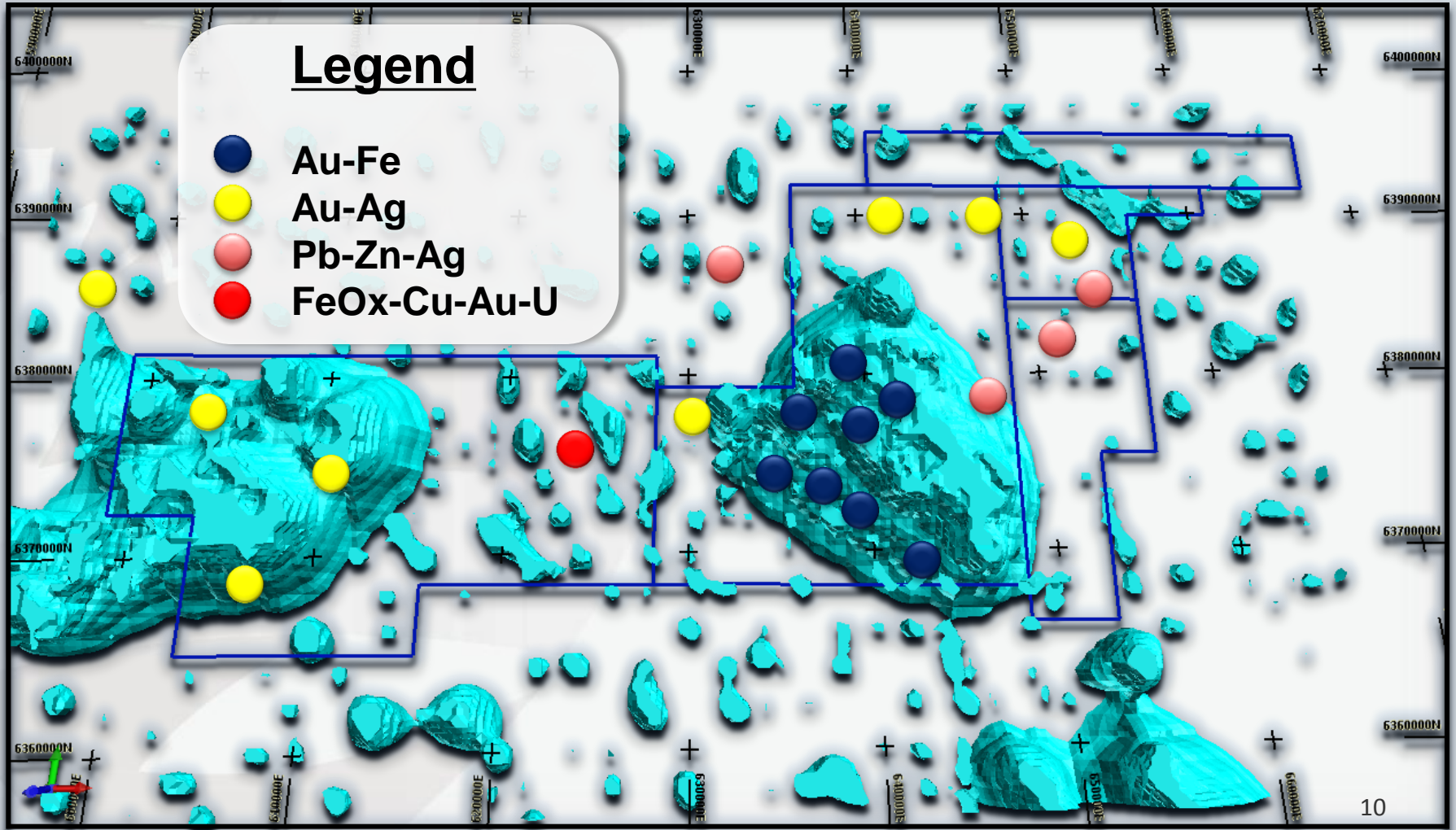
DRY MAGNETIC SEPARATION



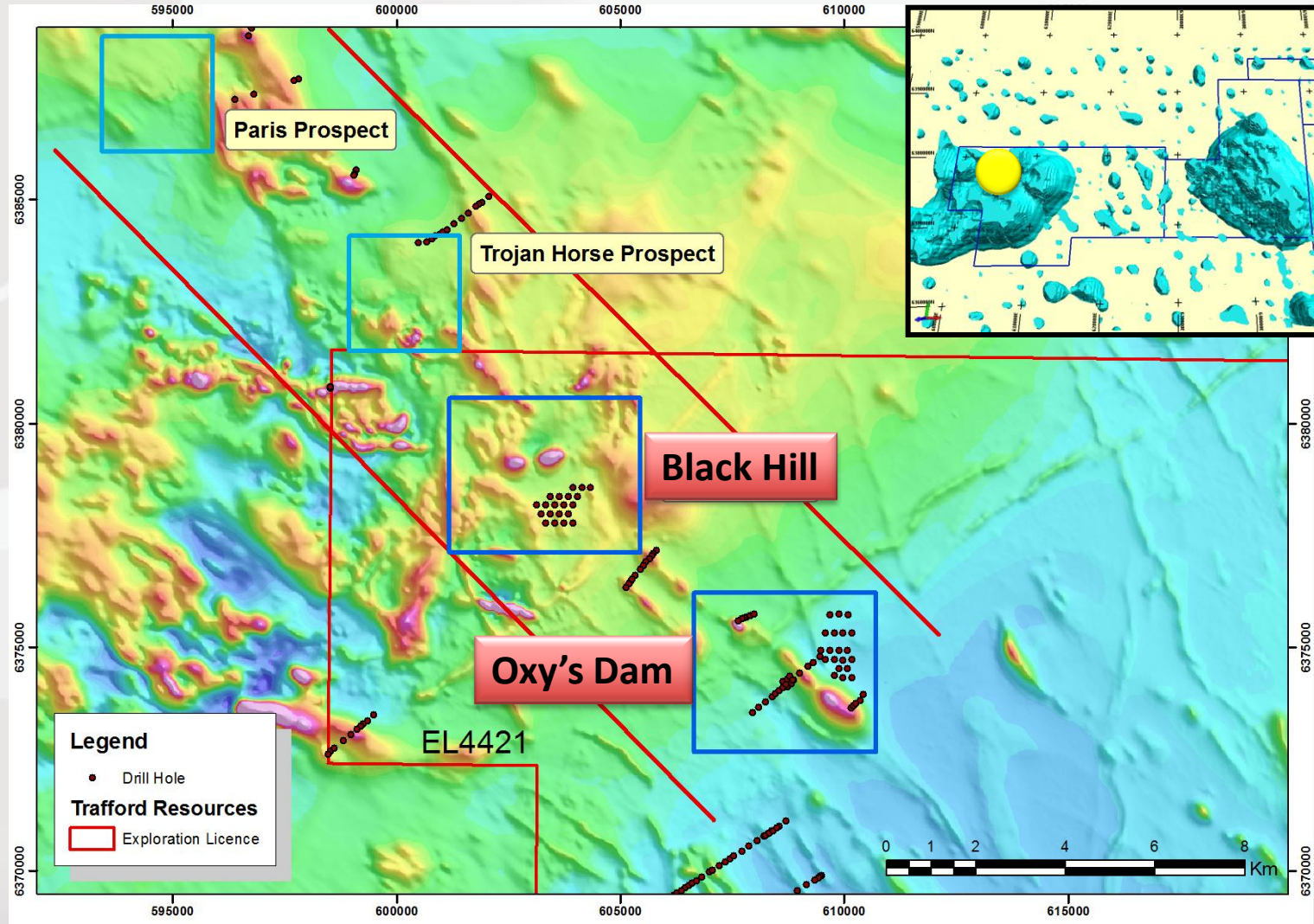
FLOATING HARBOUR



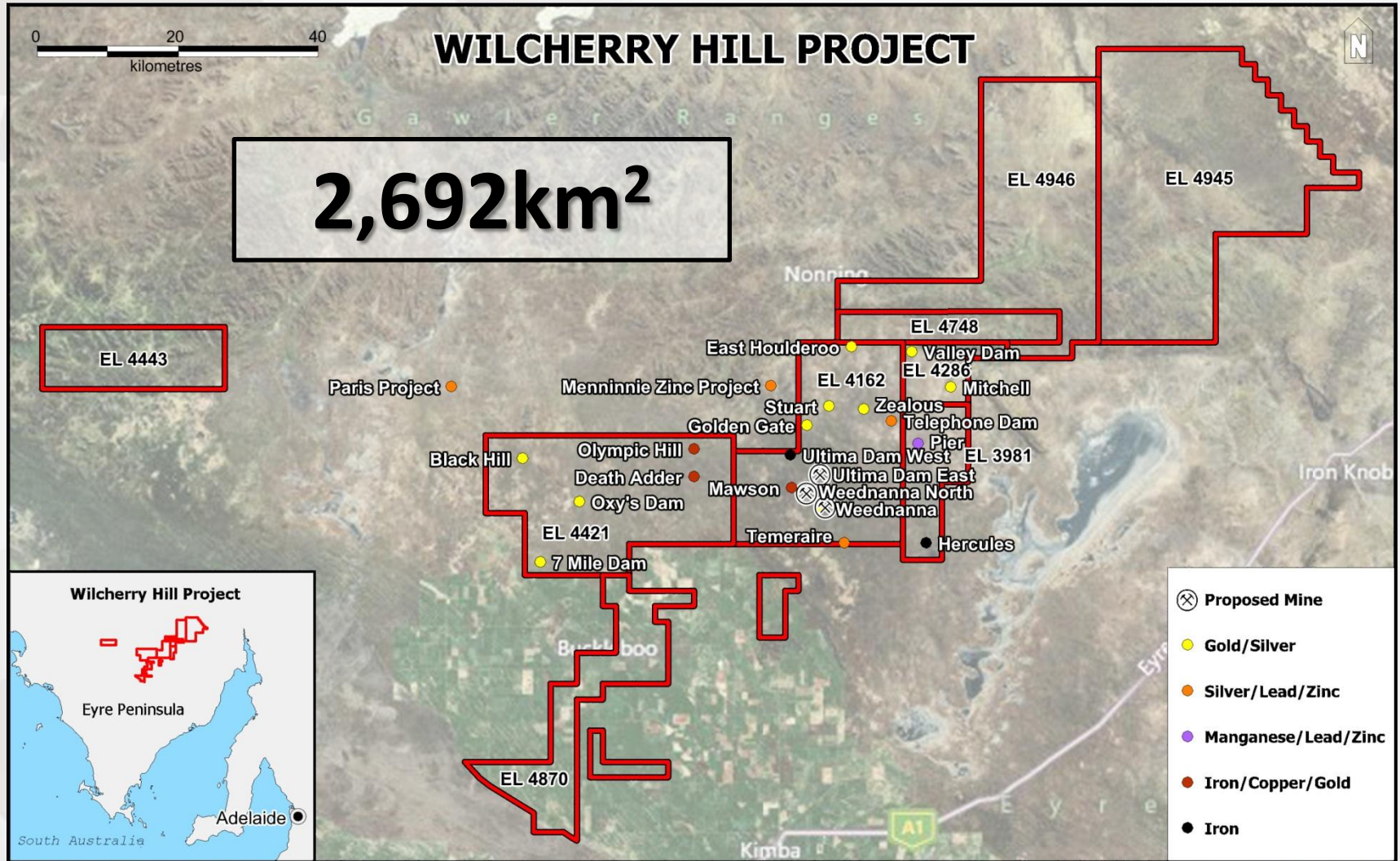
WILCHERRY HILL



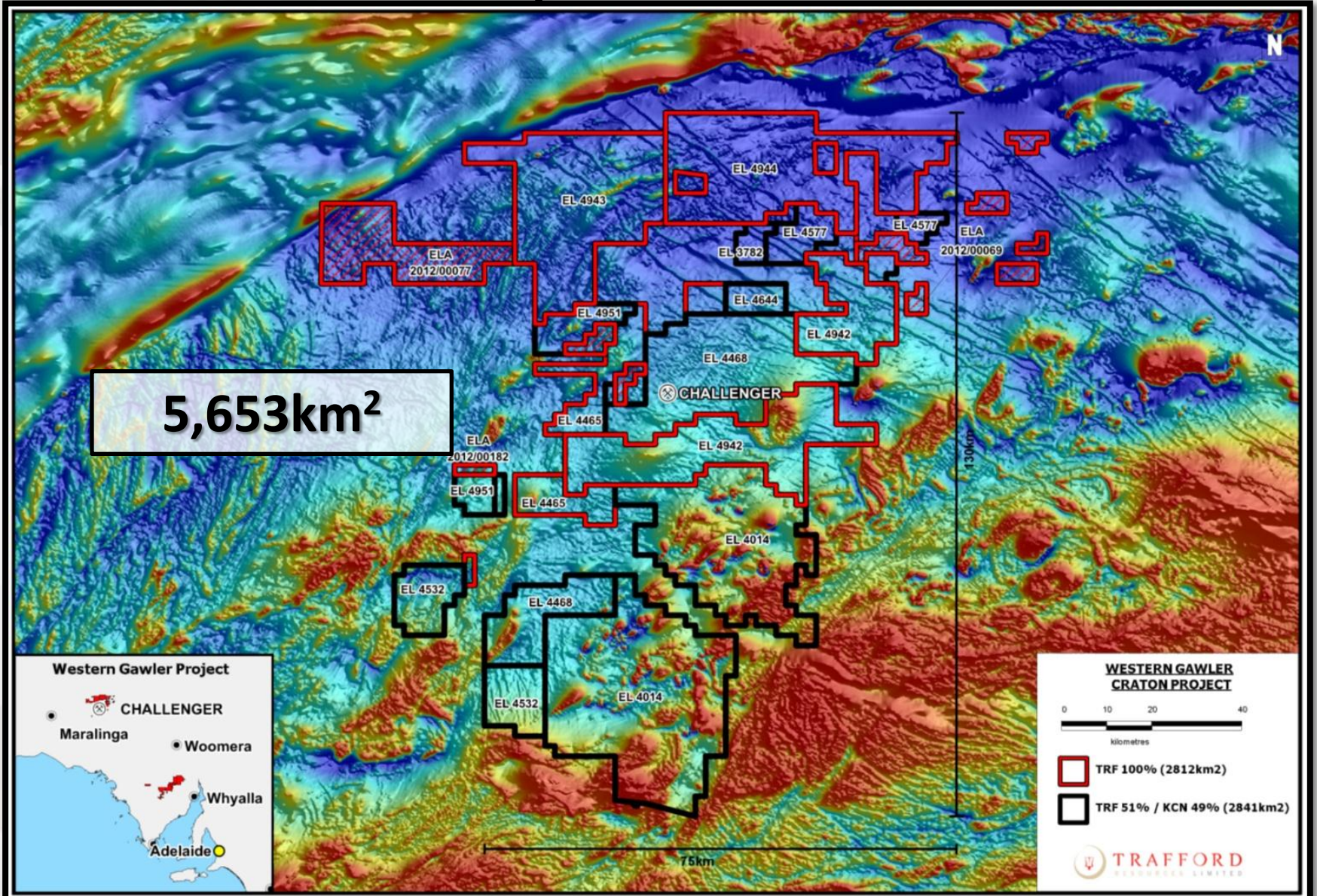
BLACK HILL



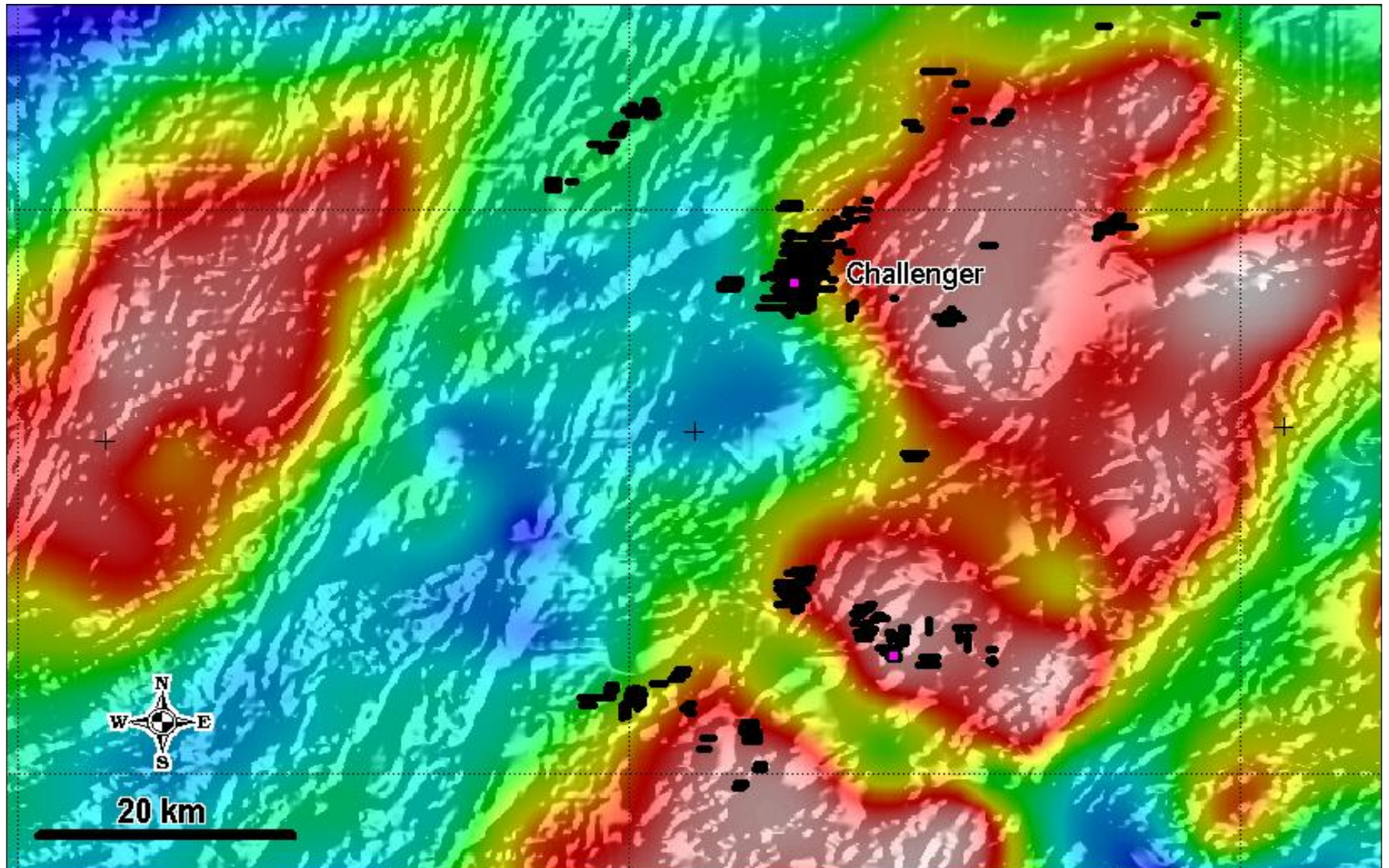
WILCHERRY HILL EXPANSION



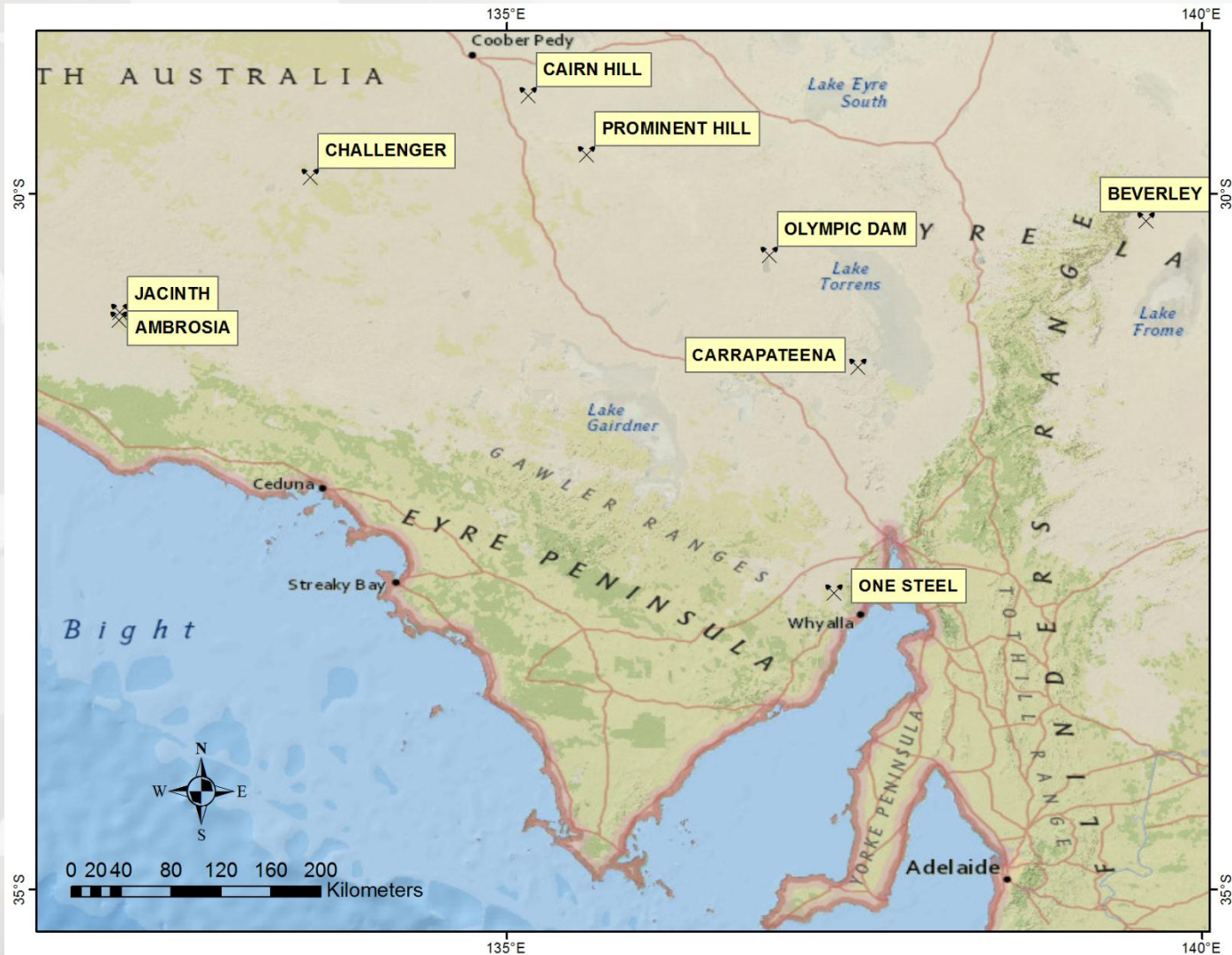
CHALLENGER/JUMBUCK PROJECT



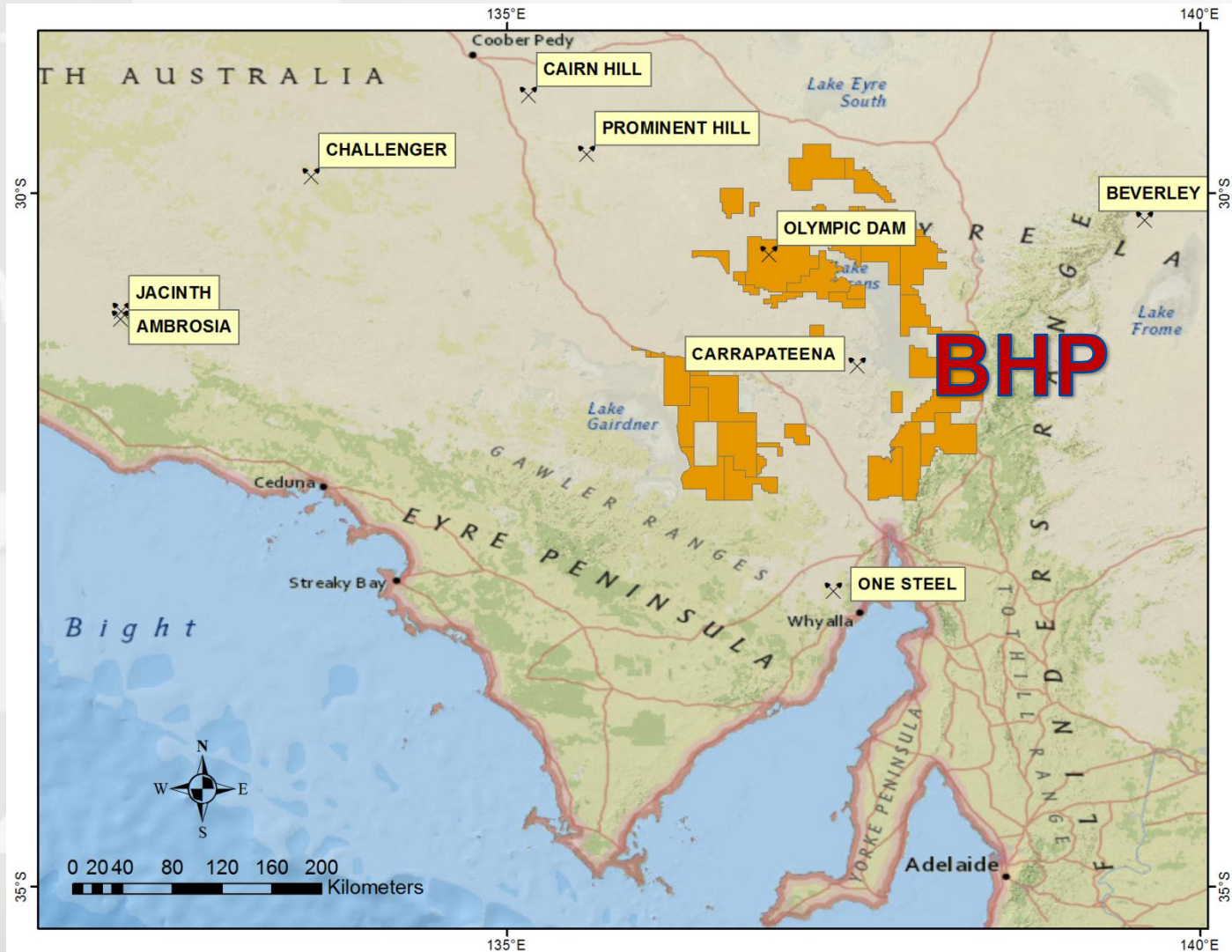
CHALLENGER/JUMBUCK PROJECT



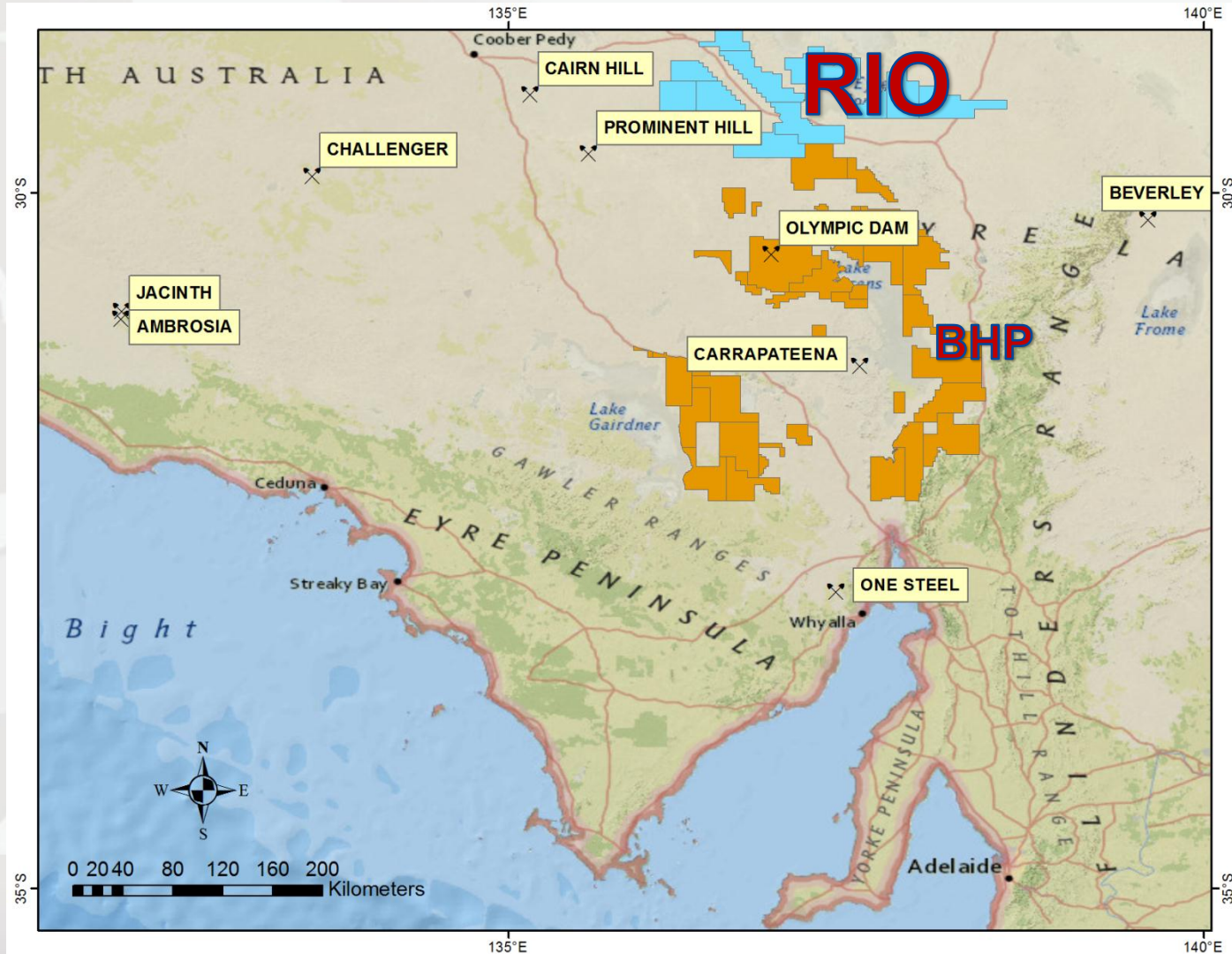
MAJOR MINING PROJECTS



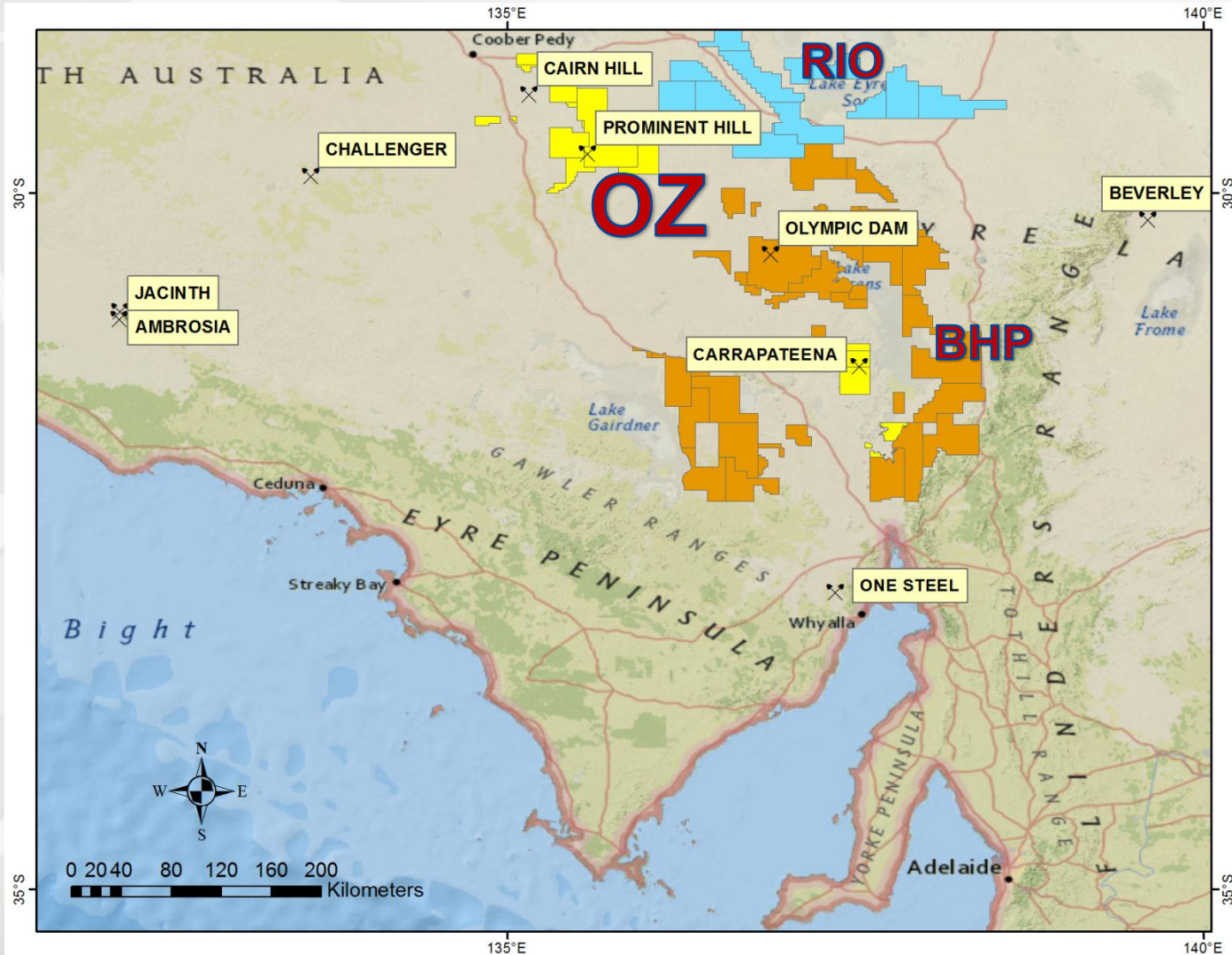
SOUTH AUSTRALIA MAJORS MOVING IN



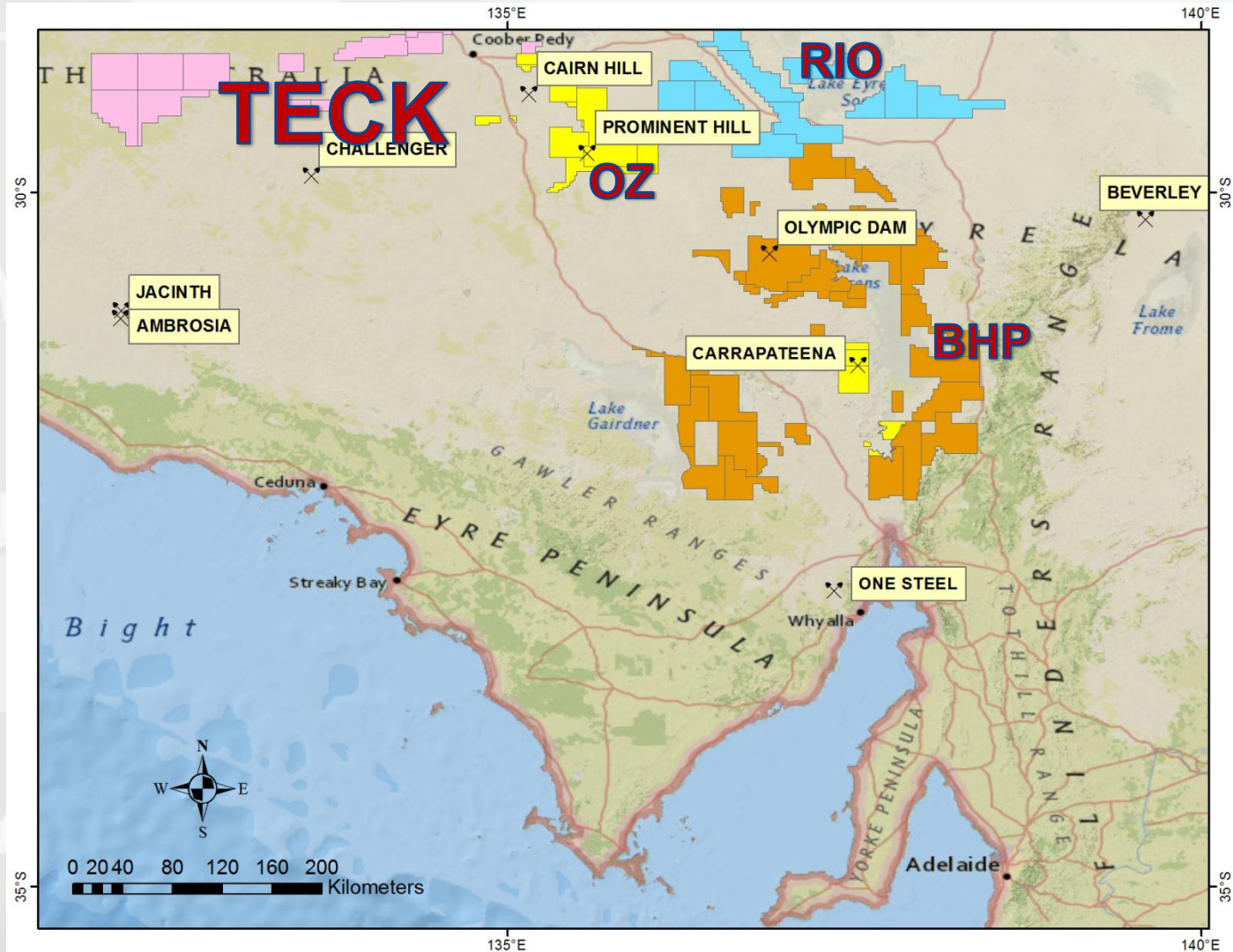
SOUTH AUSTRALIA MAJORS MOVING IN



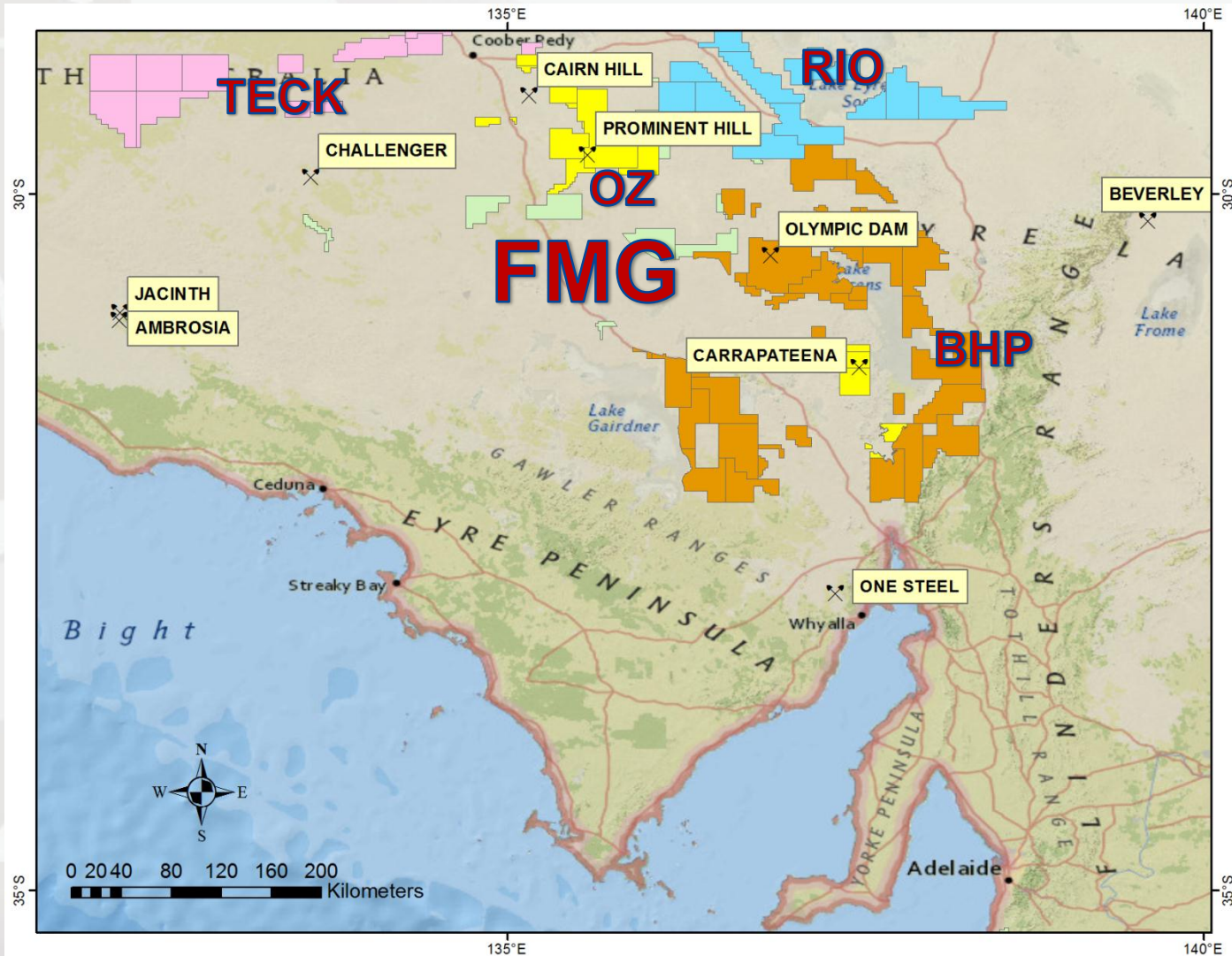
SOUTH AUSTRALIA MAJORS MOVING IN



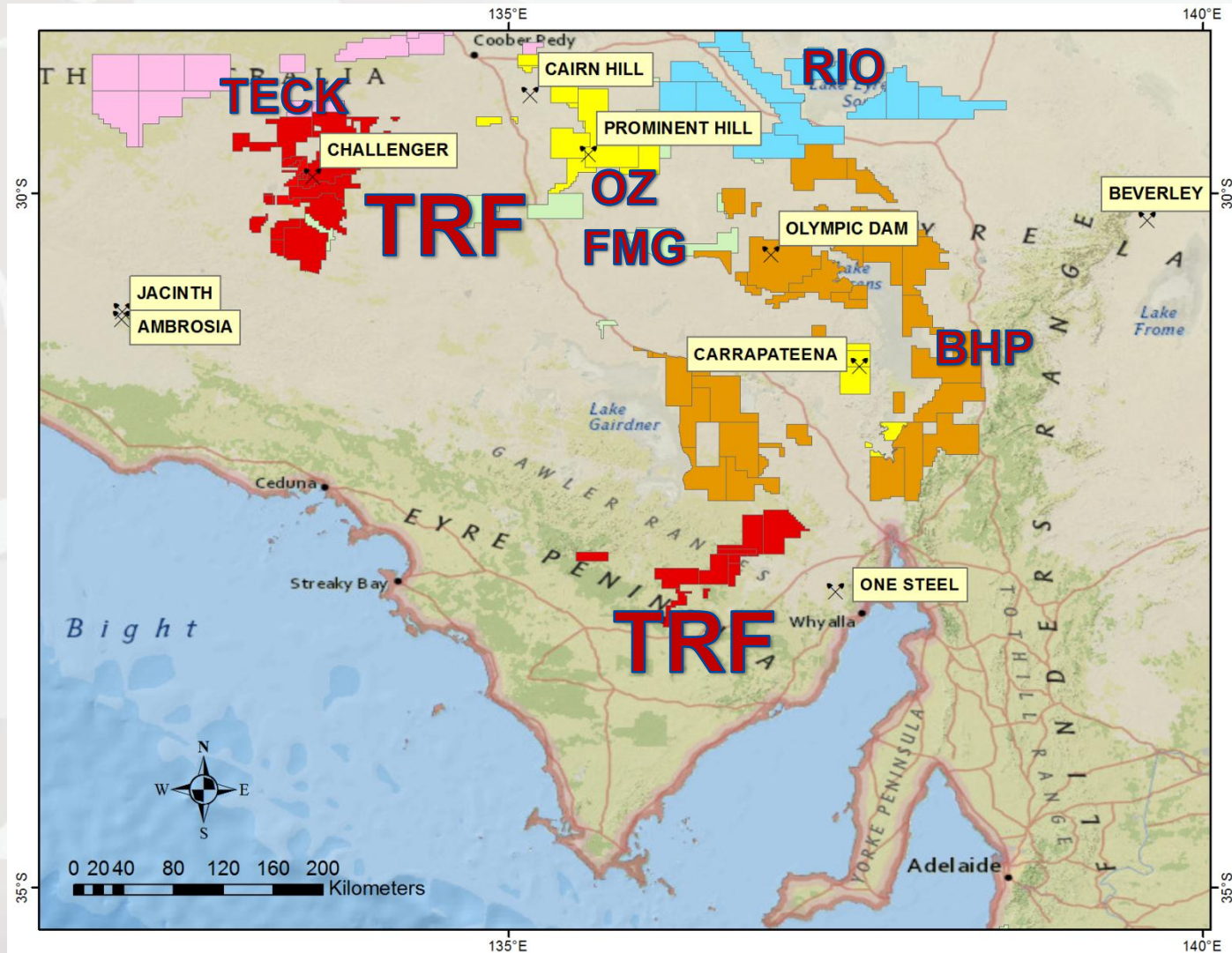
SOUTH AUSTRALIA MAJORS MOVING IN



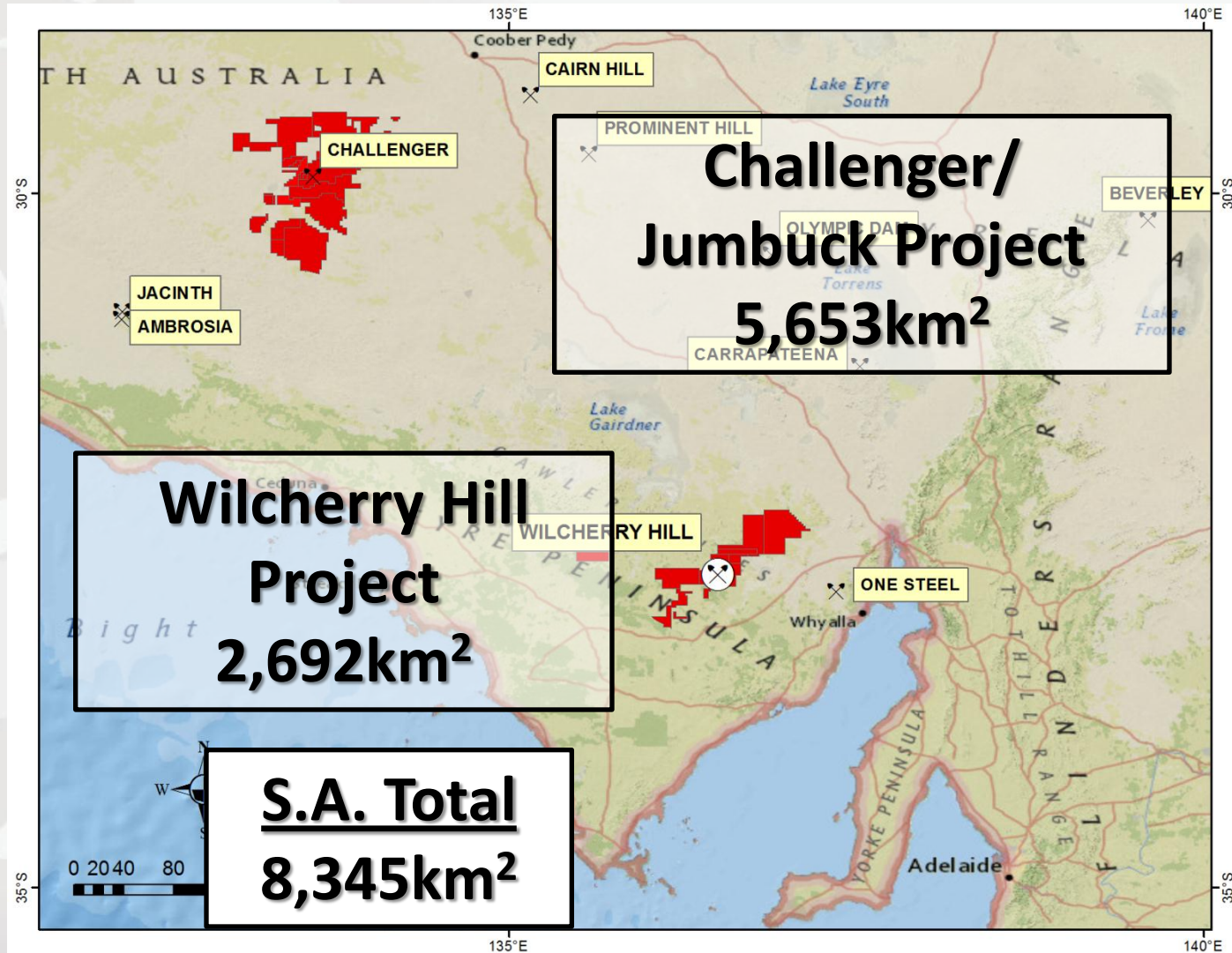
SOUTH AUSTRALIA MAJORS MOVING IN



SOUTH AUSTRALIA MAJORS MOVING IN



SOUTH AUSTRALIA MAJORS MOVING IN



SOUTH AUSTRALIA MAJORS MOVING IN

| | |
|------------|-----------------------------|
| BHP | 19,265km² |
|------------|-----------------------------|

| | |
|------------------|-----------------------------|
| RIO TINTO | 10,863km² |
|------------------|-----------------------------|

| | |
|----------------------------------|----------------------------|
| <u>TRAFFORD RESOURCES</u> | 8,345km² |
|----------------------------------|----------------------------|

| | |
|--------------------|----------------------------|
| OZ MINERALS | 7,880km² |
|--------------------|----------------------------|

| | |
|-------------|----------------------------|
| TECK | 7,477km² |
|-------------|----------------------------|

| | |
|------------|----------------------------|
| FMG | 4,123km² |
|------------|----------------------------|

GLOBAL VISION



STRATEGY

BRAZIL

TRAFFORD

GOLD/SILVER

IRON ORE

BASE METALS



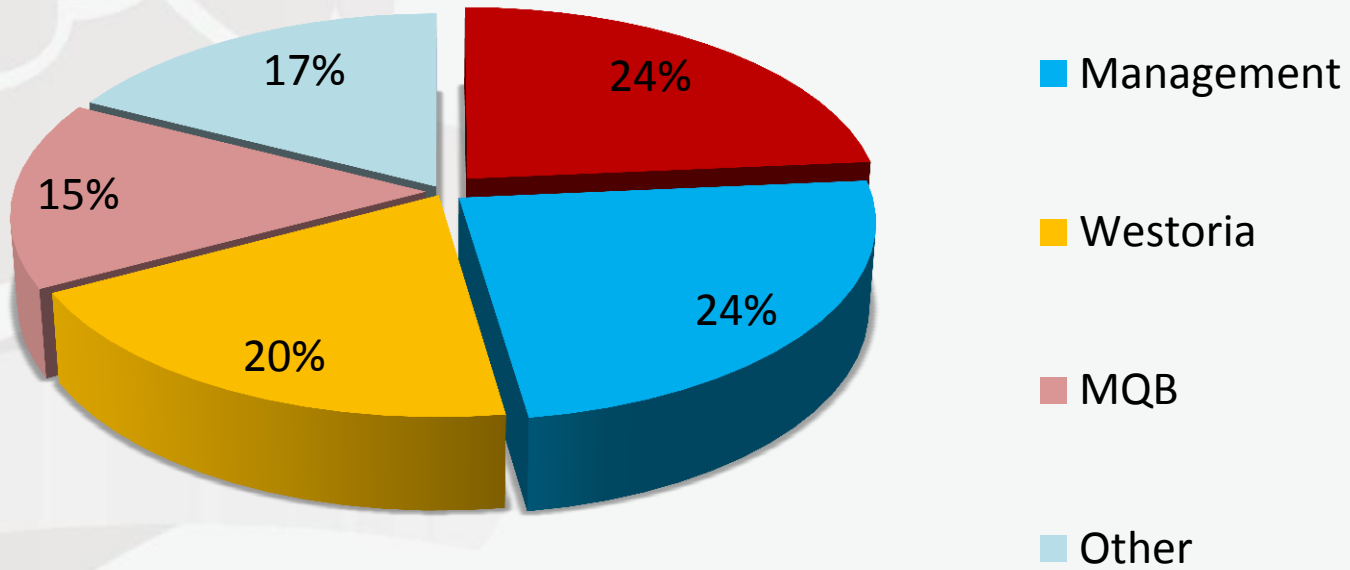
SUCCESSFUL HISTORY

\$17 Million ROI



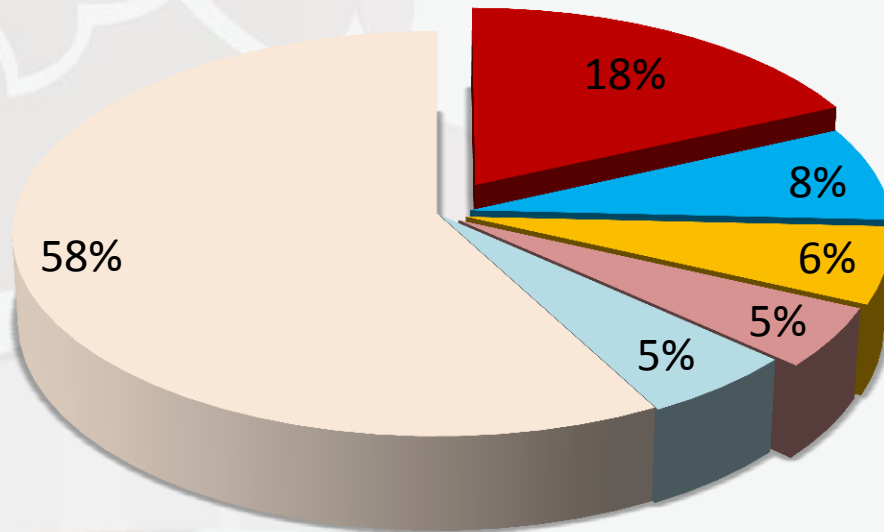
ORINOCO

Shareholders



STRICKLAND/ORINOCO

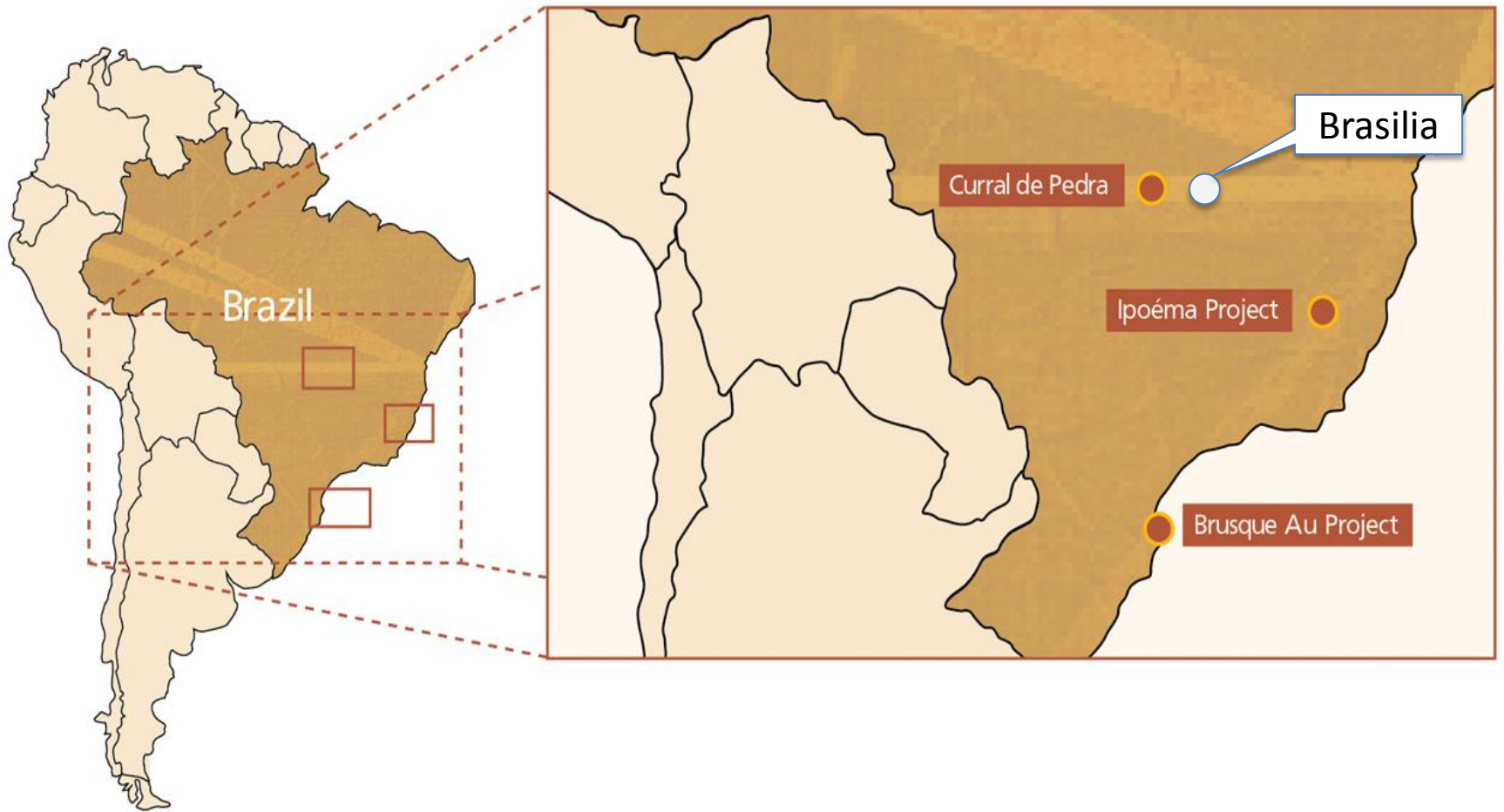
Shareholders



**based on undiluted structure*

- Trafford
- Orinoco Management
- Westoria
- MQB
- Other
- Strickland Shareholders/Public

CURRAL DE PEDRA - LOCATION



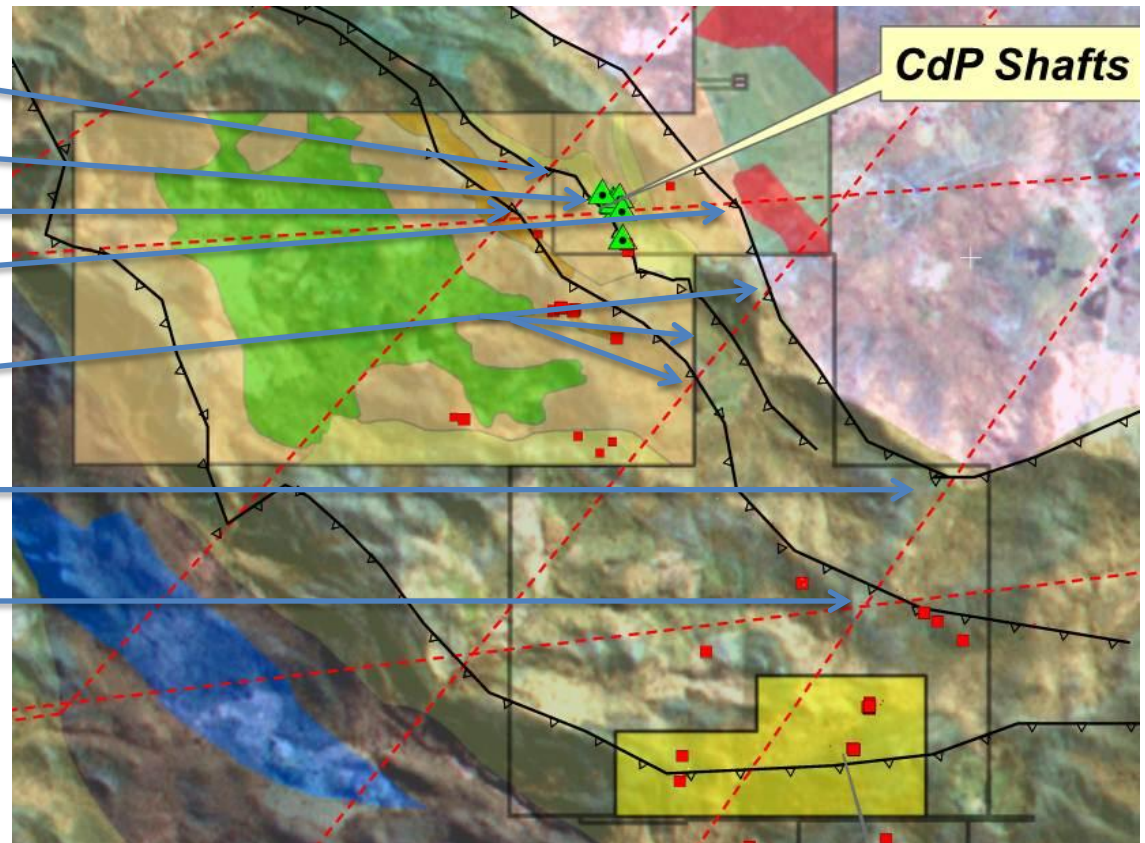
CURRAL DE PEDRA

- High grade gold project
- 23.5km² in the Faina Greenstone belts in Goiás state
- 17km of prospective shear zones
- Close to Troy's previous operation – Sertão Mine (~247,000oz @ 29g/t)
- Partner owns the 3rd largest drill company in Brazil



CURRAL DE PEDRA

- Target 2.
- Cascavel Prospect.
- Target 3.
- Target 4.
- Targets 5, 6 and 7.
- Target 8.
- Target 9.



Priority 1 Targets: thrust faults intersected by cross cutting faults:



- ▲ Main Thrust Faults
- Late Strike-slip Faults
- ▲ Shafts

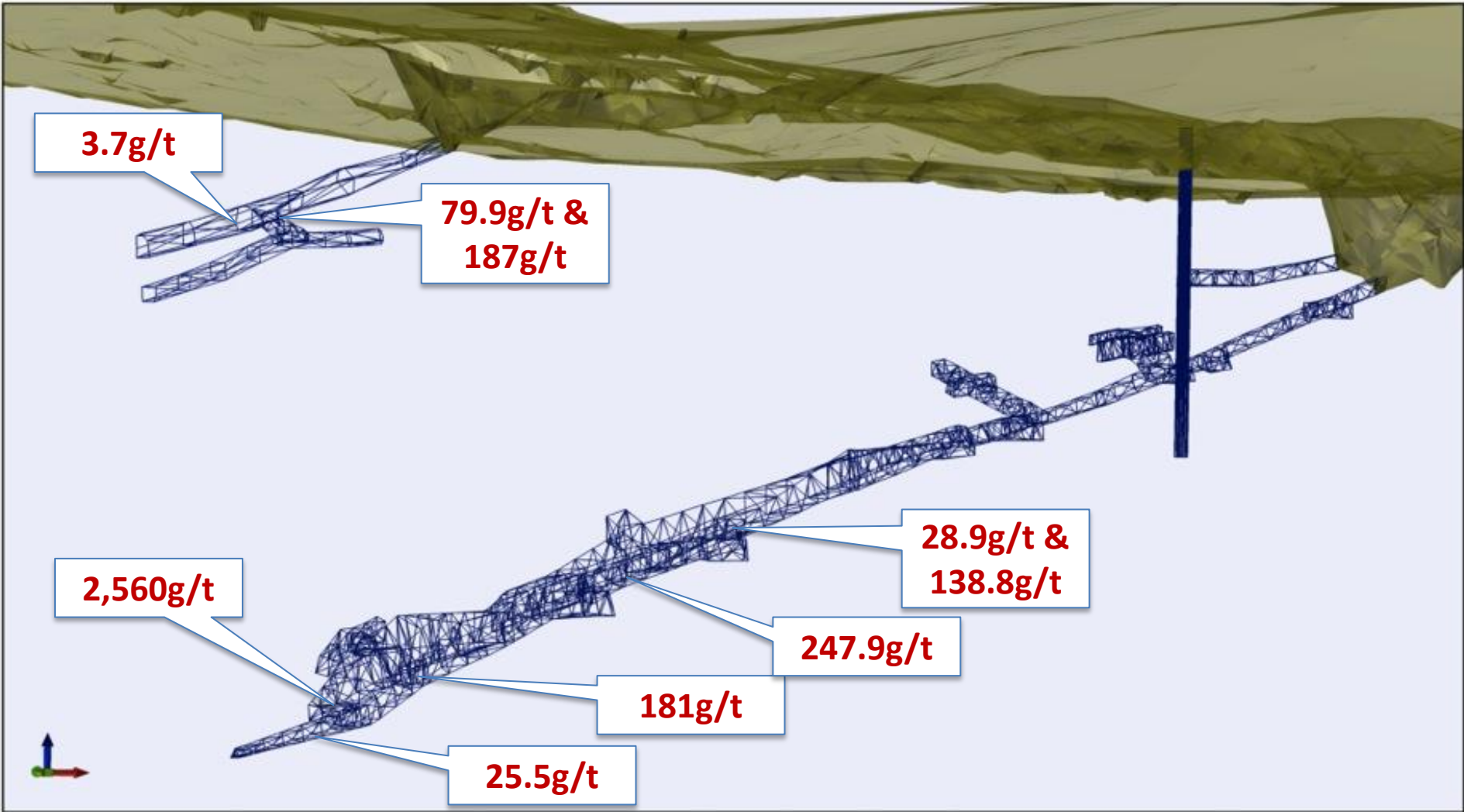
- Gravel Road
- Paved Road
- Locality
- Drainage
- ▭ CdP Claims
- ▭ Sertão Mine Concessions
- Gold Occurrence

Legend

Litology

- Chlorite Schist
- Quartzites
- Mn Rich Quartzites
- Quartz-Chlorite-Sericite Milonite
- Quartz-Chlorite Milonite
- Ultramafics
- Gneiss

ARTISANAL WORKINGS



CURRAL DE PEDRA



THANK YOU & QUESTIONS



TRAFFORD
RESOURCES LTD

www.traffordresources.com