

29 October 2012

Company Announcements Office
Australian Securities Exchange
20 Bridge Street
SYDNEY NSW 2000

Quarterly Report for quarter ended 30th September 2012.

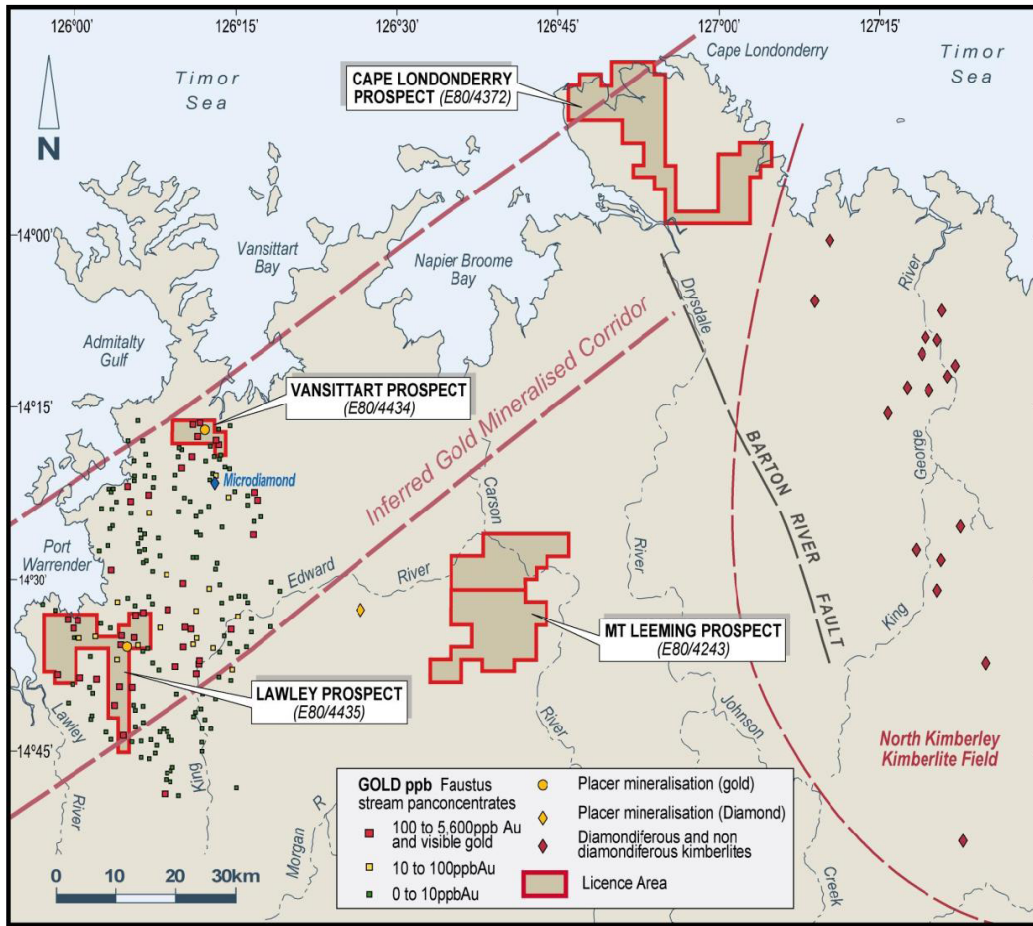
CORPORATE:

On 7th August 2012, Iron Mountain Mining Ltd (IRM) launched a takeover for United Orogen Limited to issue 1 Iron Mountain Share for every 4 UOG Ltd shares. The IRM takeover bid closed on 3 October 2012. IRM now holds 79.12% of the total shares in UOG.

MINERAL EXPLORATION WESTERN AUSTRALIA

Mt. Leeming-Bauxite-E80/4243 and E80/4439 (100%)

The Mt Leeming project is an opportunity for bauxite with a significant level of earlier exploration activity and scoping data. Historical resource estimates have been completed prior to the introduction of the JORC code. Drilling and pitting carried out during earlier exploration programmes identified significant thicknesses of bauxite in the Carson Volcanics on tenement E80/4243. The Bauxite prospectivity of the project area is considered to be significant and more detailed exploration and sampling is planned. UOG is reviewing data received as part of the acquisition in order to plan for new exploration activities on the new tenements.



Tenements Acquired from Orange Hills Ltd

Cape Londonderry-Gold E80/4372 (100%)

The Cape Londonderry project covers rock sequences which are prospective for both gold and alumina and pisolitic iron. Reconnaissance exploration by earlier explorers has identified gold and volcanic-hosted base metals mineralization.

Lawley-Gold,Base Metals E80/4435 (100%)

The geological setting is prospective for both gold and diamonds. Although relatively unexplored, work by others has identified a number of anomalous gold values ranging up to 5600ppb, together with at least one diamond occurrence. Areas that have outcropping (and faulted) Hart Dolerite will be the subject of detailed mapping and sampling in the search for hydrothermal alteration and vein type base metal mineralization.

Vansittart-Gold,Base Metals E80/4434 (100%)

The Vansittart Prospect is believed to be prospective for gold hosted by King Leopold Sandstone and possibly base metals in the Hart Dolerite, where hydrothermal veins elsewhere in that rock sequence reportedly contain identified, polymetallic (gold, silver and base metal) mineralization. Extensive areas of the Hart Dolerite surround the prospect and detailed exploration is warranted in the search for these prospective rock sequences within the Company's tenement area. Exploration by others report on the presence of microdiamond occurrences, within the postulated gold mineralized corridor that extends northeast-southwest, along a line between E80/4372 and E80/4434.

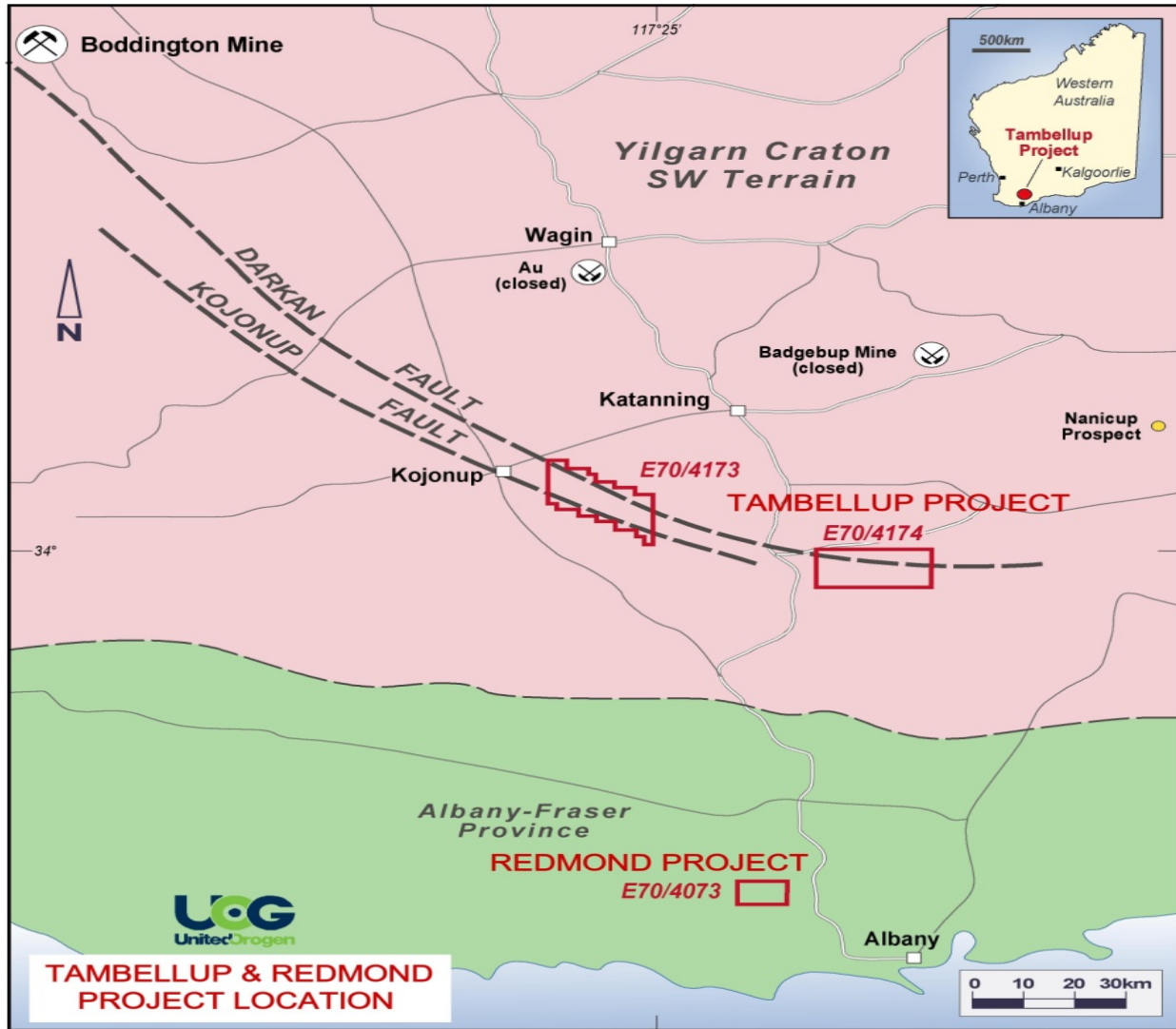
Tambellup Project (100%)

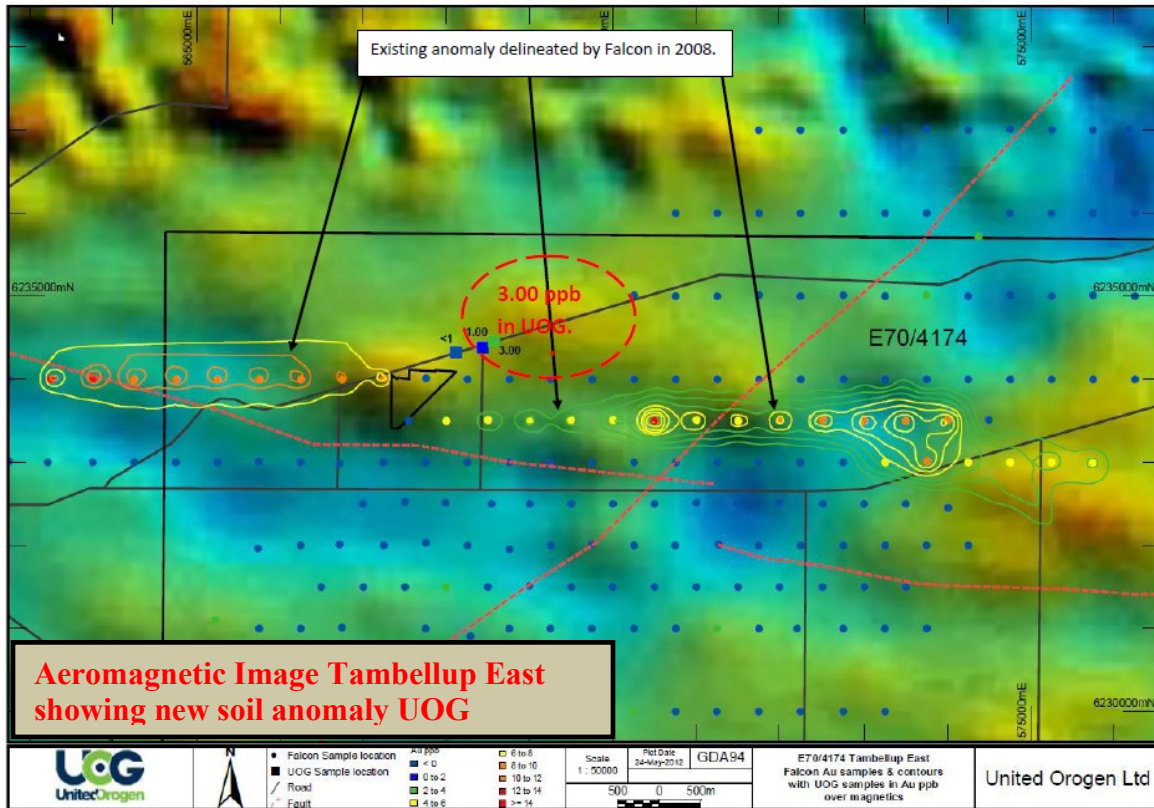
(Tambellup E70/4173, Granted. Tambellup East E70/4174, Granted)

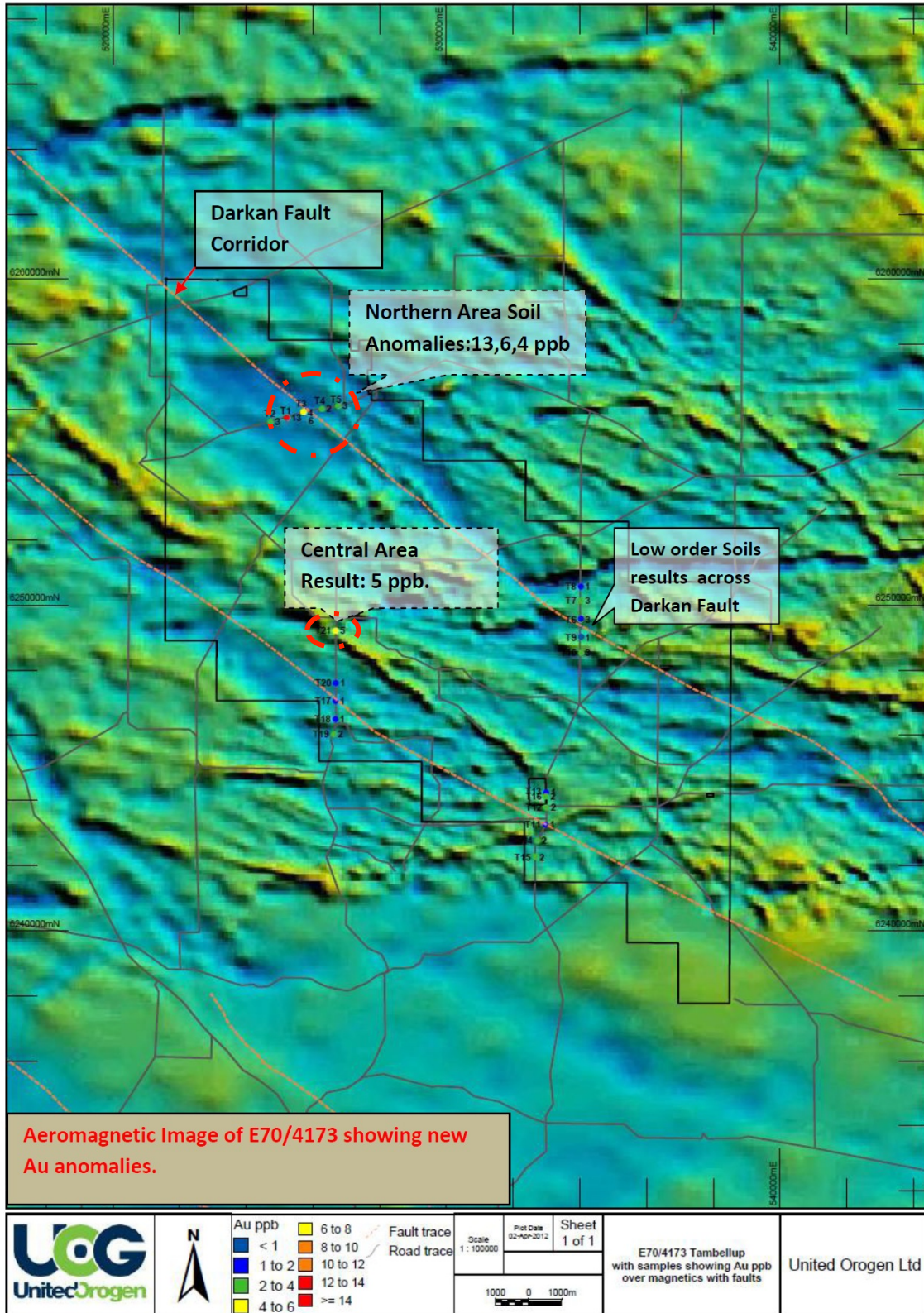
The two licenses cover approximately 395 km² and are situated 100km north of Albany and 30 km south of Katanning. The project area lies within the Yilgarn Craton South West Terrane with the Albany-Fraser Proterozoic Mobile Belt lying to the south and is prospective for gold and base metals. Soil sampling was carried out on anomalies in the western part of E70/4174 and on E70/4173 in the March 2012 Quarter.

On E70/4174 UOG is assessing an extension to the northern anomaly. The highest result was 3 ppb Au and additional closer spaced sampling will help define structures parallel to the main northerly anomaly.

On E70/4173, anomalous results of up to 13 ppb Au have been obtained on the interpreted position of the Darkan Fault in the north of the tenement. Other soil samples in the vicinity have values of 6.4 And 3 ppb Au. Planning for follow up soil sampling around these anomalous results and along the interpreted trends of the Darkan and Kojunup structures was carried out during the quarter.



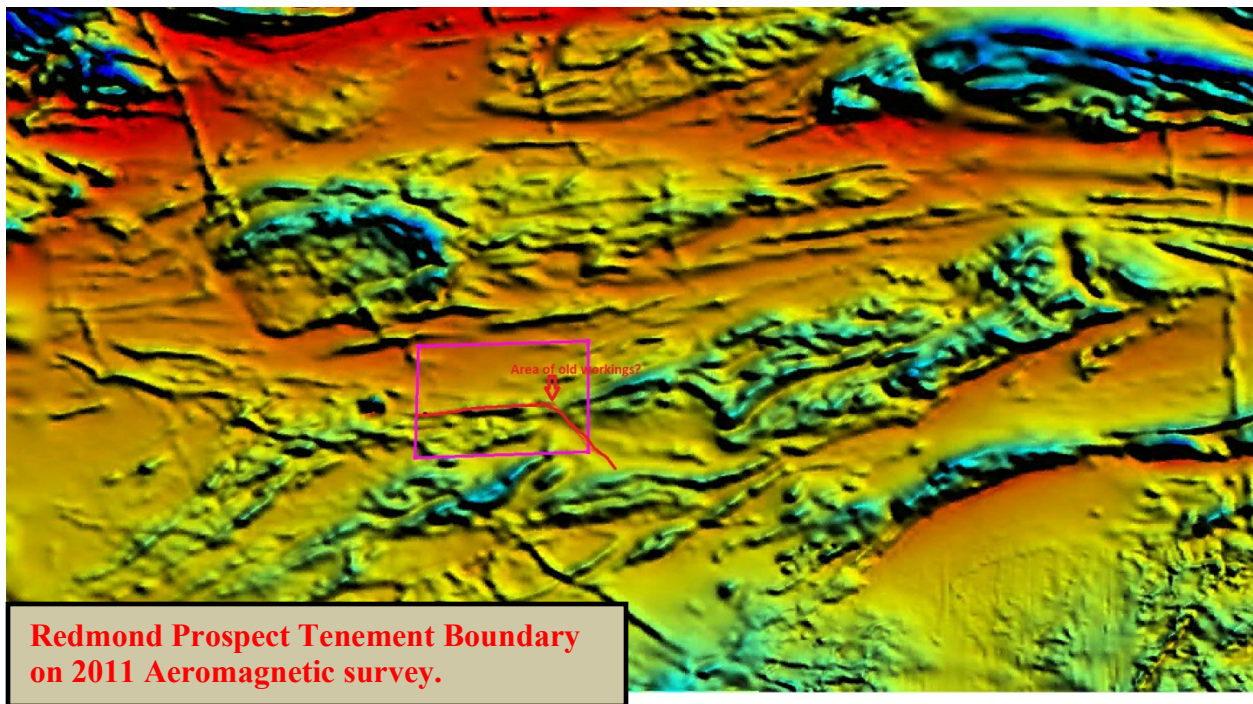




Redmond Project (100%)

(E70/4073; Granted April 2 2012)

During this quarter, UOG acquired RAAF photography dating to 1943. This photographic record was superimposed on reported locations of workings and soil sampling carried out in 1997. This has assisted in the search for the locations of shafts and workings that have been recorded as having had a production of gold.



New Government aeromagnetic imagery released recently has also been used to plan further exploration and sampling. The new imagery shows moderately strong magnetic anomalies to the south of the Hay-Redmond road.

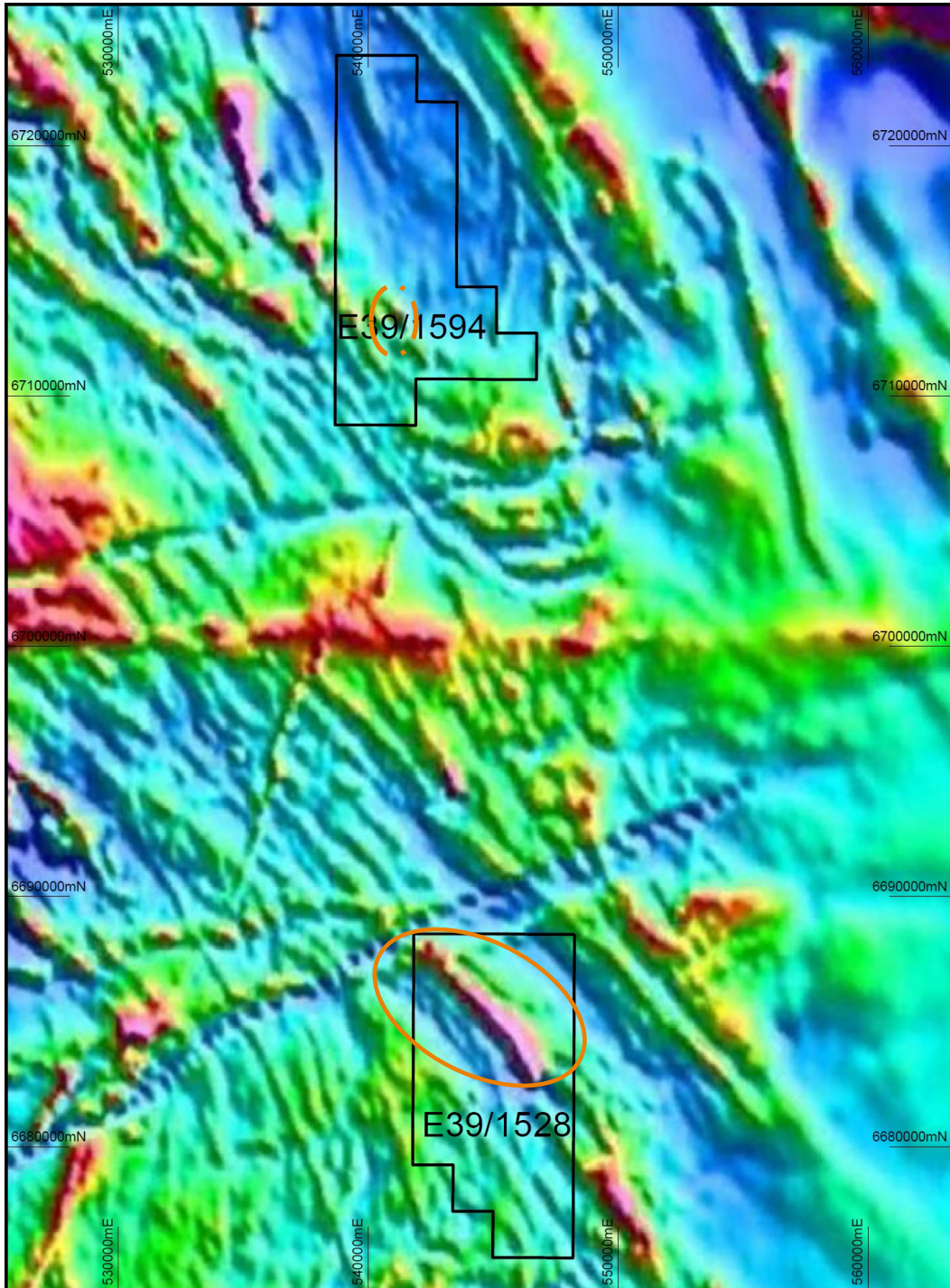
Victoria Desert Project (100%)




(Victoria Desert E39/1528, Victoria Desert North E39/1594) .

The Project area is situated 250km ENE of Kalgoorlie and covers an area of approximately 185km² and is prospective for gold, base metals and uranium. The area is covered by undulating WNW trending sparsely vegetated static sand dunes with an average height of 10-15 metres. This continuous sand cover obscures the bedrock mineralization and the suitability of surface sampling techniques is often brought into question.

Previous explorers have found at least six gold anomalies and two areas with uranium anomalies. There is potential for sedimentary hosted gold, base metals and uranium deposits. It has been possible to define lineaments in lake sediments, as they are of a different colour due to the influx of oxidized brines.

The Victoria Desert North project is underlain by narrow belts of north west trending greenstone of the Narnoo Greenstone Belt within granites interpreted from aeromagnetic surveys. Mafic and ultramafic lithologies are present in a structural setting of north and north west trending brittle deformed faults .The area is therefore prospective for gold, base metals and uranium. During this quarter UOG continued further desktop studies for target generation and planning for a new geochemical sampling programme was completed.



		Scale	Plot Date	GDA94	Victoria Desert tenements E39/1594 & E39/1528 over magnetics	United Orogen Ltd
		1 : 200000	08-Jun-2012			
		1000 01000m				
						

Horseshoe South Project (100%)

(Horseshoe South E52/2569)

UOG's exploration has included a heliborne geophysical survey which indicated no deep conductors are present in this area negating the possibility of a deep sulphide deposit. This area is being targeted for north west striking structurally controlled gold mineralization due to the vicinity of known deposits in the area however field checking and a data review of previous soil geochemistry, mapping and drilling carried out by Dominion Mining in this area did not produce encouraging results. Additional work will be required in the north west area of the tenement to determine the prospectivity of the project area.

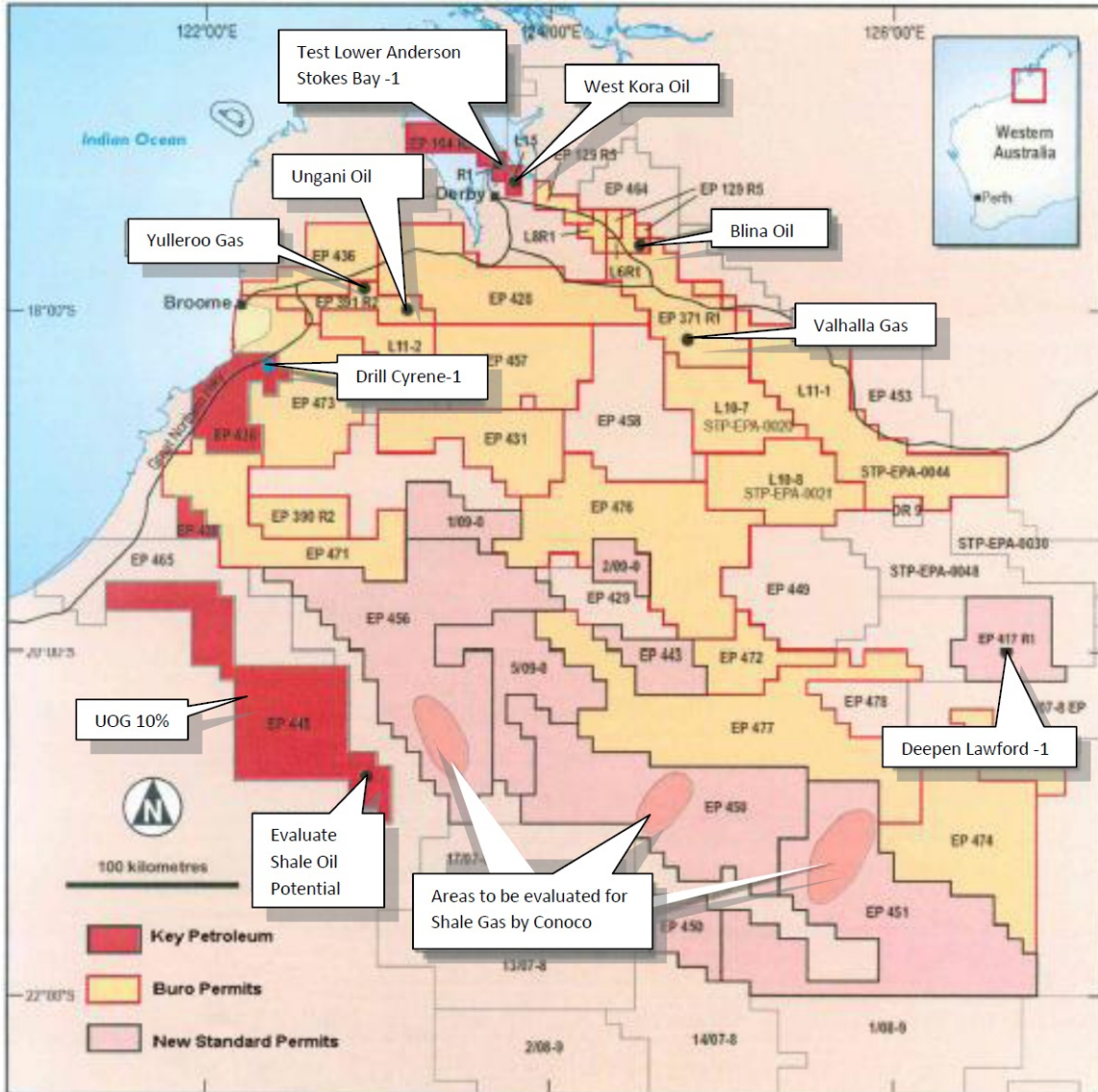
Gunnedo Project (100%)

(E69/2825)

The tenement is located within the Eucla Basin approximately 450km east of Kalgoorlie and covers an area of 132km². Previous exploration is very limited which includes aeromagnetic and gravity surveys and two partly government funded (50%) diamond holes drilled to a depth of 400m each. The explorers were targeting possible nickel sulphide mineralization within a north easterly trending zone of magnetic anomalies coincident with gravity high. No significant nickel mineralization was intersected. Other major explorers working in the vicinity of the Gunnedo project have relinquished their holdings and are now concentrating their efforts 120km further east along the major Mundrabella fault.

Examination by our geologists has not revealed lithologies that may host significant thicknesses of base metals or gold mineralization. Radiometric measurements on the core were not significant. UOG is reviewing this information.

EP 448 Canning Basin Oil and Gas



Key Petroleum, on behalf of the EP 448 Joint Venture, (of which UOG holds 10%), are negotiating with potential farm-in groups to progress exploration within the EP448 Permit in the Canning Basin. This permit is located in the southern part of the basin where other companies have committed large exploration programs in the search for shale gas reserves.

This part of the Canning Basin has rich oil source rocks of the Goldwyer Formation which are considered some of the richest source rocks in Western Australia. The West Anketell 8,000 line km Aeromagnetic Survey was completed and existing seismic is being evaluated to delineate carbonate reef type prospects in the Nita and structural development in carbonates of the Nullara Formation as well as the Goldwyer Formation for Shale Oil/Shale Gas potential. RPS Energy consultants have been appointed by Key Petroleum to undertake Shale Oil Maturation Studies.



Parmesh Vakil
Exploration Manager

The information within this report as it relates to exploration results and mineral resources was compiled by Mr. Parmesh Vakil. Mr. Vakil is a Member of the Australasian Institute of Mining and Metallurgy and is an employee of the company. Mr. Vakil has sufficient experience, which is relevant to the style of mineralization and the type of deposit under consideration to qualify as a Competent Person as defined in the 2004 Edition of the "Australasian Code for Reporting of Exploration Results, Mineral Resources and Ore Reserves, the JORC Code". Mr. Vakil consents to the inclusion in the report of the matters based on information in the form and context which it appears.
