

8 August 2012

ASX RELEASE

ASX Code: WAC

## RC Drilling results from Quinns Mining Centre and Yerilla Project

Final 1 metre sample assays have been received for RC drilling recently completed at the Quinns and Yerilla Projects. All drilling results from routine composite sampling from these drilling programs have been previously reported in the June Quarterly Report 2012. At the Quinns Project drilling was completed in the corridor between the existing Forest Belle and Boudie Rat open pits. The drilling program completed at the Quinns Mining Centre received co-funding drilling assistance under the Western Australian Government Exploration Incentive Scheme (EIS). This drilling has confirmed the continuation of strong gold mineralisation for a distance of 200 metres south of the Forrest Belle open pit within the Quinns Mining Centre.



Figure 1: Projects Location Map

Significant RC drill results (1 metre) at the Quinns Mining Centre include

- **7 metres @ 4.9 g/t gold from 76 metres (including 1 metre @ 19.97 g/t gold)** - (WARC037)
- 1 metre @ 2.47 g/t gold from 91 metres - (WARC035)
- 1 metre @ 2.23 g/t gold from 112 metres - (WARC039)

Significant RC drill results (1 metre) at the Yerilla Mining Centre include

*From the Yerilla King Prospect*

- 1 metre @ 2.83 g/t gold from 52 metres - (WAYRC001)
- 1 metre @ 1.25 g/t gold from 40 metres - (WAYRC002)
- 1 metre @ 1.75 g/t gold from 62 metres - (WAYRC002)

*From the Queen of the Earth Prospect*

- 1 metre @ 1.59 g/t gold from 20 metres - (WAYRC003)
- **1 metre @ 9.34 g/t gold from 23 metres - (WAYRC003)**
- 1 metre @ 1.03 g/t gold from 87 metres - (WAYRC003)

## **QUINNS PROJECT - Quinns Mining Centre, “Between the Pits” Corridor**

RC drilling between the Forrest Belle (historical production: 28,200t @ 3.40 g/t gold) and Boudie Rat (historical production: 42,600t @ 4.16 g/t gold) open pits has been successful in delineating gold mineralisation within this corridor. The RC drilling program was completed during the June 2012 quarter (Figure 2), having received co-funding from the Department of Minerals and Petroleum (DMP). A total of 11 holes were completed for 1,185 metres. Drilling was focused on the 550 metre corridor between the Forrest Belle and Boudie Rat open pits. Drill holes were completed along drill traverses at nominal 100 metres separation throughout this corridor. Average drill hole depths achieved with this program was 108 metres to a maximum of 126 metres. Indications from earlier completed low level multi-element assaying of the remaining “end of hole” RAB drill chips (1987) in this area has demonstrated the gold anomalous shear zones mined in the open pits are continuous through this area. These zones are highlighted between the pits by the +9 ppb gold and +20 ppb gold contours to a maximum of 89.9 ppb gold.

Initial composite sampling results from this RC drilling program have supported the defined geochemical anomalies between the pits. The 1 metre sample assays for all anomalous zones identified from this drilling have been returned. The best result returned from this corridor is **7 metres @ 4.90 g/t gold** from 76 metres (WARC037) including **1 metre @ 19.97 g/t gold**. Other significant results include **1 metre @ 2.47 g/t gold** from 91 metres (WARC035) and **1 metre @ 2.23 g/t gold** from 112 metres (WARC039). All significant results (greater than 0.30 g/t gold) returned from the 1 metre sampling intervals from this drilling are detailed in Table 1. Drill hole collar details are presented in Table 3 in the Appendix of this report.

Generally this drilling has indicated that anomalous gold intersections (greater than 0.10 g/t gold) have been returned from the drilling of the western geochemical anomaly throughout the entire length of the corridor between the pits. This limited drilling has returned higher results from the southern strike extents of the Forrest Belle open pit western mineralisation which has now been extended a further 200 metres toward the Boudie Rat open pit. The eastern lode system and geochemical anomaly has also been intersected with this drilling up to a distance of approximately 150 metres south of the Forrest Belle open pit. It is at this position that drilling has intersected **1 metre @ 2.47 g/t gold** from 91 metres.

At the western anomalous trend drill hole WARC037 has returned a wide interval of **7 metres @ 4.90 g/t gold** from 76 metres and includes **1 metre @ 19.97 g/t gold**. This intersection is located 55 metres along strike to the south of the southernmost drill section which covers the western lode system. This intersection lies approximately 100 metres south of the current Forrest Belle open pit.

Continuing along this trend for a further 90 metres the recent RC drilling has intersected **1 metre @ 2.23 g/t gold** from 112 metres (WARC039) within a wider zone of 3 metres @ 0.96 g/t gold. This indicates that gold mineralisation extends approximately 200 metres south of the Forrest Belle open pit.

QUINNS MINING CENTRE										
Hole No	Easting	Northing	RL	Depth	Dip	Azimuth	From	To	Interval	Au
	(collar) GDA_94	(collar) GDA_94	(nom)	(m)		(magnetic)	(m)	(m)		(m)
WARC035	257125	6786772	445	101	-60	76	91	92	1	2.47
WARC036	257092	6786760	445	114	-60	76	96	97	1	0.38
WARC037	257060	6786751	445	100	-60	76	76	77	1	1.58
							77	78	1	1.41
							78	79	1	3.54
							79	80	1	19.97
							80	81	1	5.7
							81	82	1	0.74
							82	83	1	1.36
WARC038	257123	6786675	445	102	-60	76	81	82	1	0.65
WARC039	257073	6786664	445	120	-60	76	112	113	1	2.23
WARC044	257133	6786452	445	100	-60	76	19	20	1	0.37

**Table 1: Significant 1 metre sample results from RC drilling at the Quinns Mining Centre.**

Note: All samples were assayed by Bureau Veritas Kalassay. Gold determinations were completed 40g Fire Assay to a 0.01 ppm detection limit. Drill hole coordinates are expressed in GDA94 datum, Zone 51. Collars surveyed with handheld GPS.

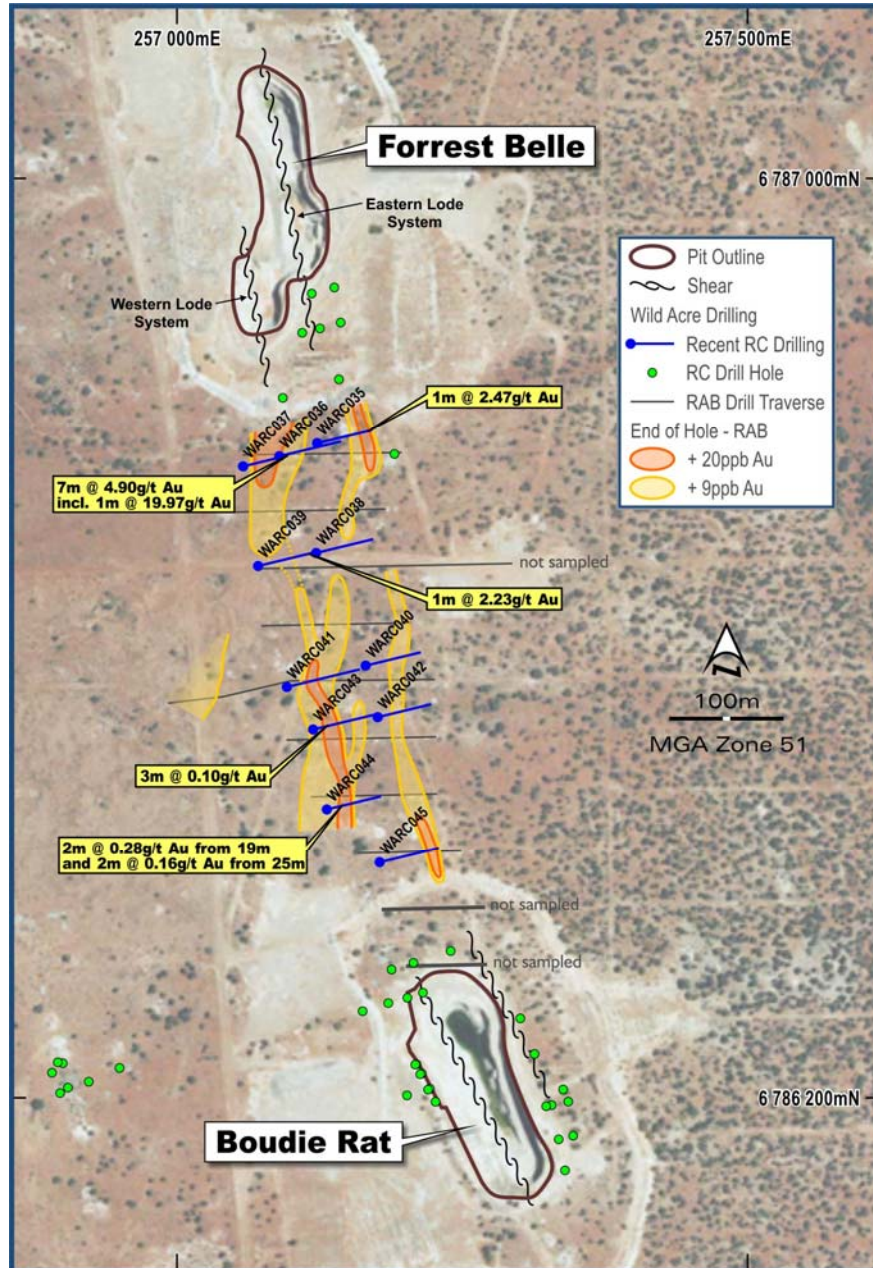
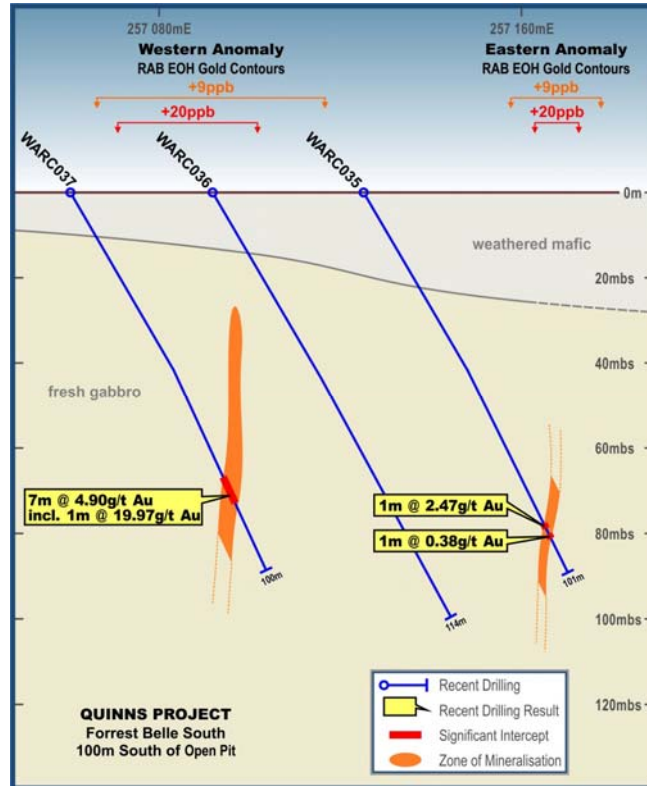


Figure 2: Drill Hole Summary Plan - RC Drilling at Quinns Mining Centre



**Figure 3: Drill Section WARC035 – WARC037  
May 2012 RC Drilling Quinns Mining Centre**

### YERILLA PROJECT - Yerilla Mining Centre RC Drilling

An RC drilling program was completed at the Yerilla Project during the June Quarter 2012 (Figure 1). Drilling targeted the down dip extensions to known mineralisation at the Yerilla King and Queen of the Earth prospects. The Yerilla King prospect is reported the largest zone mined at the Yerilla Mining Centre with workings extending over a length of 200 metres to a depth of 60 metres. Mineralisation is hosted within shears and quartz veining in basalts east of the granite margin, striking north westerly and dipping to the west. The mineralisation at the Queen of the Earth prospect is related to a series of north westerly striking, steep east dipping shear zones that contain quartz veining.

A total of 3 holes for 262 metres were completed at the Yerilla Mining Centre during May 2012. Two holes were completed at the Yerilla King prospect and a single hole was completed at the Queen of the Earth prospect located on the western margin of the Yerilla Mining Centre. Drill hole locations are shown in Figure 4.

The 1 metre sample assays for all anomalous intervals identified from routine composite sampling have been returned. The best result returned from this drilling is **1 metre @ 9.34 g/t gold** from 23 metres at the Queen of the Earth prospect. The best result returned from drilling at the Yerilla King prospect was **1 metre @ 2.83 g/t gold** from 52 metres. All significant results (greater than 0.30 g/t gold) returned from the 1 metre sampling intervals from this drilling are detailed in Table 2. Drill hole collar details are presented in Table 4 in the Appendix of this report.

Drilling at the Yerilla King prospect has intersected the mineralised horizon in both WAYRC001 and WAYRC002. Hole WAYRC001 was planned to test the Yerilla King reef on a section approximately 65 metres south of the main shaft. An anomalous 3 metre zone was intersected returning a best result of 1 metre at 2.83 g/t gold. This intersection is located 16 metres up dip from a previous intersection of 2 metres at 27.3 g/t gold. This drilling confirms a minimum shoot length of approximately 50 metres. Hole WAYRC002 was



aimed at testing the Yerilla King mineralisation immediately beneath the lowest mined level of 200 feet (62.5 metres) and approximately 16 metres up dip from a previously drilled intersection of 2 metres 6.17 g/t gold. An intersection of 1 metre @ 1.75 g/t gold was returned which is suspected to from back fill material.

Drilling at the Queen of the Earth prospect, located on the western margin of the Yerilla Mining Centre was aimed at extending previously intersected mineralisation at depth. WAYRC003 was aimed at testing beneath a previously returned intersection of 4 metres @ 7.85 g/t gold. Drilling was targeted at 15 metres down plunge and intersected **1 metre @ 9.34 g/t gold** from a broader interval of 4 metres @ 2.74 g/t gold from 23 metres. This mineralisation is contained within quartz vein material (80%) in a moderately bleached basaltic host rock. This drilling demonstrates the continuity of high grade, narrow reef style of mineralisation at the Queen of the Earth prospect.

YERILLA MINING CENTRE								
	Easting	Northing	RL					
	Easting (collar)	Northing (collar)	(nom)				Au	
Hole No	GDA_94	GDA_94		From	To	Interval	g/t	Prospect
WAYRC001	385845	6738063	440	40	41	1	0.76	Yerilla King
WAYRC001				52	53	1	<b>2.83</b>	Yerilla King
WAYRC002	385833	3768127	440	40	41	1	1.25	Yerilla King
WAYRC002				62	63	1	1.75	Yerilla King – Possible back fill
WAYRC003	385355	6738472	440	20	21	1	1.59	Queen of the Earth
WAYRC003				23	24	1	<b>9.34</b>	Queen of the Earth
WAYRC003				87	88	1	1.03	Queen of the Earth

**Table 2: Significant Results from 1m sampling of RC drilling at Yerilla Mining Centre**

Note: All samples were assayed by Bureau Veritas Kalassay. Gold determinations were completed 40g Fire Assay to a 0.01 ppm detection limit.

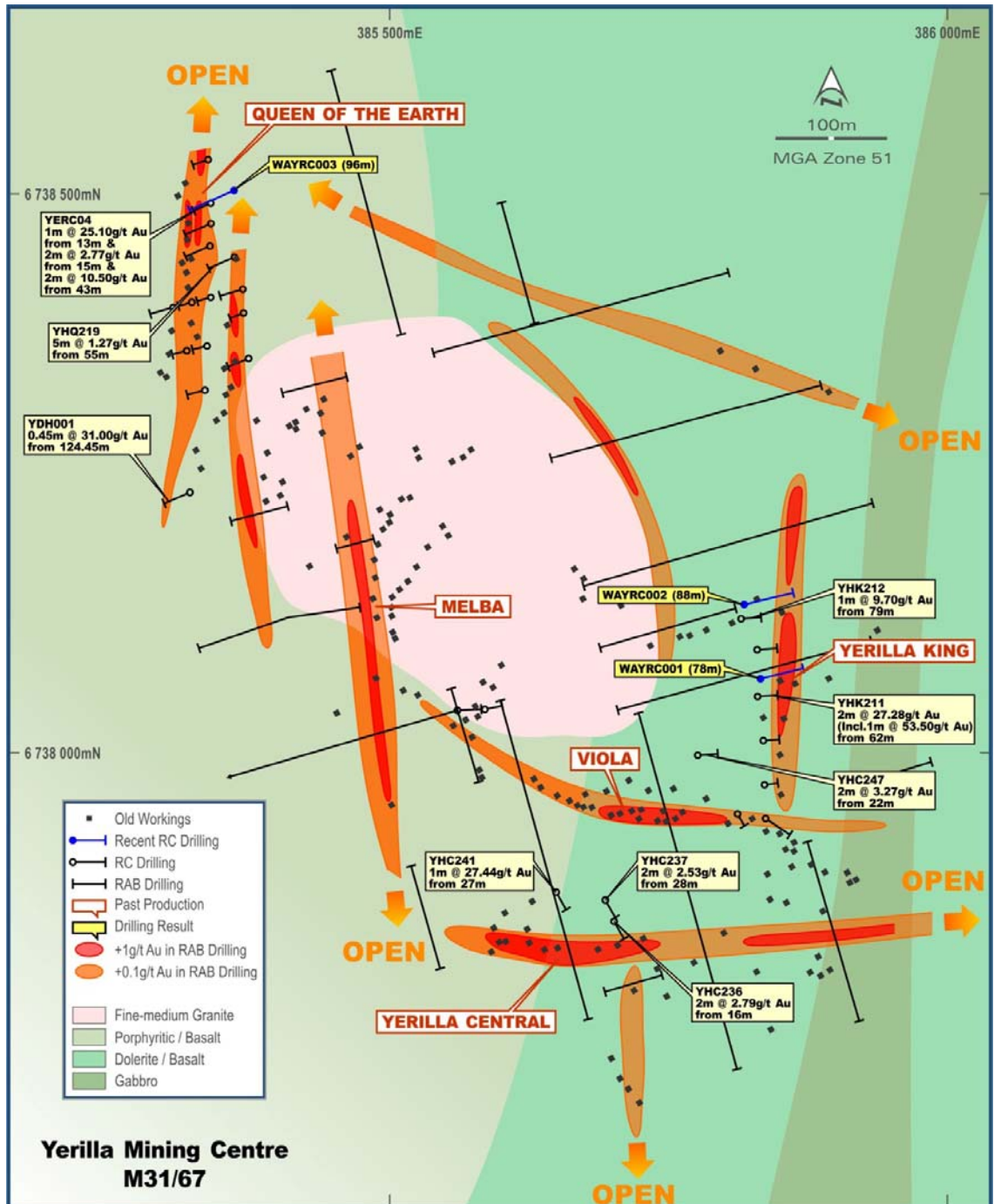
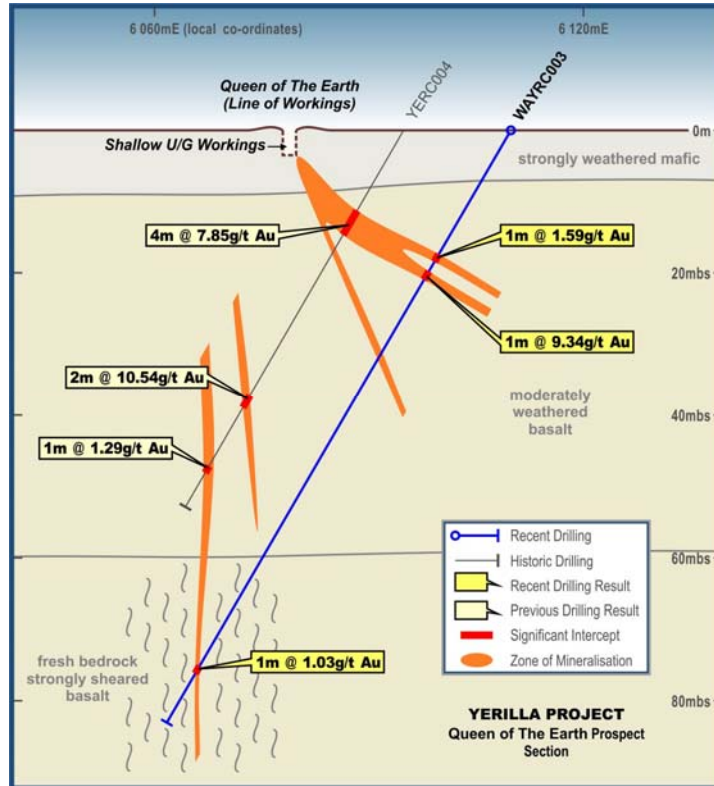


Figure 4: Drill Hole Layout Plan – RC Drilling at Yerilla Mining Centre



**Figure 5: Drill Section WAYRC003 Queen of the Earth Prospect Yerilla**

**For further information please contact:**

**Grant Mooney**  
Executive Chairman  
Phone: (08) 9226 0085

or **Alan Downie**  
Executive Director,  
Technical  
Phone: (08) 9226 0111

or **David Tasker / James Harris**  
Professional Public Relations  
Phone: (08) 9388 0944

**Competent Persons Statement**

The information in this document that relates to exploration results is based upon information compiled by Mr Alan Downie, a full-time employee of Wild Acre Metals Limited. Mr Downie is a Member of the Australasian Institute of Mining and Metallurgy (AusIMM) and has sufficient experience which is relevant to the style of mineralisation and type of deposit under consideration and to the activity which he is undertaking to qualify as a Competent Person as defined in the December 2004 edition of the "Australasian Code for Reporting of Exploration Results, Mineral Resources and Ore Reserves" (JORC Code). Mr Downie consents to the inclusion in the report of the matters based upon the information in the form and context in which it appears.

---- ENDS ----

**ABOUT WILD ACRE**

Wild Acre Metals Limited is a focused gold, nickel and base metal explorer with projects located in Southern Peru and the Eastern Goldfields of Western Australia. The Company has recently broadened its exploration focus, acquiring 3 projects in southern Peru. Peru is rated as one of the fastest growing economies in the world and leads South America in GDP. Southern Peru represents an excellent opportunity for new discoveries within a "World Class" district of large copper, iron and gold mines. These projects are targeting epithermal gold, porphyry copper and iron oxide copper gold (IOCG) deposit styles. These projects complement Wild Acre's existing gold and nickel projects in the Eastern Goldfields of Western Australia.



**ANNEXURE 1**

QUINNS MINING CENTRE						
Hole No	Easting	Northing	RL	Depth	Dip	Azimuth
	(collar)	(collar)	(nom)	(m)		(magnetic)
WARC035	257125	6786772	445	101	-60	76
WARC036	257092	6786760	445	114	-60	76
WARC037	257060	6786751	445	100	-60	76
WARC038	257123	6786675	445	102	-60	76
WARC039	257073	6786664	445	120	-60	76
WARC040	257167	6786578	445	100	-60	76
WARC041	257098	6786559	445	126	-60	76
WARC042	257177	6786533	445	100	-60	76
WARC043	257120	6786522	445	120	-60	76
WARC044	257133	6786452	445	100	-60	76
WARC045	257178	6786406	445	102	-60	76

**Table 3: Drill Hole details for RC drilling at the Quinns Mining Centre.**

Note: Drill hole coordinates are expressed in GDA94 datum, Zone 51. Collars surveyed with handheld GPS.

YERILLA MINING CENTRE						
Hole ID	East_GDA94	North_GDA94	RL	Dip	Azimuth	Depth (m)
WAYRC001	385845	6738063	440	-60	70	78
WAYRC002	385833	3768127	440	-60	70	88
WAYRC003	385355	6738472	440	-60	250	96

**Table 4: Drill Hole Details for RC drilling at the Yerilla Mining Centre.**

Note: Drill hole coordinates are expressed in GDA94 datum, Zone 51. Collars surveyed with handheld GPS.