

**Western Desert Resources, a diversified resources business with a portfolio of quality mineral exploration assets in the Northern Territory.**

Western Desert Resources' business is built on the exploration of its substantial portfolio of iron ore, gold, base metals and uranium projects in the world-class mining provinces of Australia and will continue to grow through the generation and acquisition of new opportunities and resources.

**FAST FACTS**

ASX Code	WDR
Issued Shares	219m
Market Cap	A\$170M

**DIRECTORS**

Rick Allert	Chairman
Norm Gardner	MD
Mick Ashton	Director
Graham Bubner	Director
David Cloke	Director
Phillip Lockyer	Director
Scott Perrin	Director

**COMPANY HIGHLIGHTS**

**Iron Ore**

- Roper Bar & Mountain Creek projects (NT)
- Hematitic iron ore
- Total Inferred, Indicated & Measured Mineral Resource estimates of 402Mt @ 40% Fe including DSO of 32.1Mt @ 56.8% Fe
- Low Impurities
- Mine development underway
- Proximity to coast and markets

**Gold / Copper**

- East Rover Project near Tennant Creek (NT)

**CONTACT DETAILS**

Level 1, 26 Greenhill Rd  
WAYVILLE, SA, 5034  
T: +61 8 8177 8800  
info@westerndesertresources.com.au

ABN: 48 122 301 848

**INVESTOR PRESENTATION – ADDITIONAL INFORMATION**

Western Desert Resources Limited (ASX: WDR) announces additional information within the Investor Presentation released to the market on 26<sup>th</sup> June, 2012. This statement should be read in conjunction with the original release.

Exploration target - Resource Size Benchmarking graph per Page 11

The exploration target for the Roper Bar project ranges from 1.4Bt – 2.0Bt at 40-60% Fe (which includes the present level of JORC Mineral Resource estimates as announced by WDR and is demonstrated on the slide as an averaged figure at 1.70Bt.). This exploration target is an estimation based on drilling, surface sampling, geochemical assays, geological mapping, and interpretation of detailed aeromagnetic surveys. The potential quantity and grade of any exploration target is conceptual in nature and there has yet, been sufficient exploration to define its overall Mineral Resource. It is uncertain whether further exploration will result in a larger, smaller, or any Mineral Resource.

Risk Factors: Mineral Resource Estimation – Page 19

The mineralisation at the Roper Bar project is defined in prior announcements according to the JORC code as Mineral Resource estimates. At this time no JORC Ore Reserve statements have been published. Accordingly the term “Mineral reserves” has been removed from the description given on page 19 so that that WDR is consistent with prior announcements.

Value Potential – Production Profile and Enterprise Value to Production – Page 9

The long-term target projected for 2017+ is based on WDR's assessment of existing iron ore mineral resource estimate which is targeted to support a mine life of at least 20 years at a production rate of 20.0Mt per annum. At this stage no upper limit to production has been determined, as exploration continues on identified targets within the total area of 1900 km<sup>2</sup> and that controlling factors such as possible plans for loading facility developments cannot be guaranteed at this time.

Page 9 also refers to an Enterprise Value (“EV”) to production. WDR confirms that the EV is subject to outstanding modifying factors yet to be satisfied in order to define an ore reserve as mentioned above. The EV has been amended to A\$68.79/t (from 67.2/t) in the light of a correction to input values.

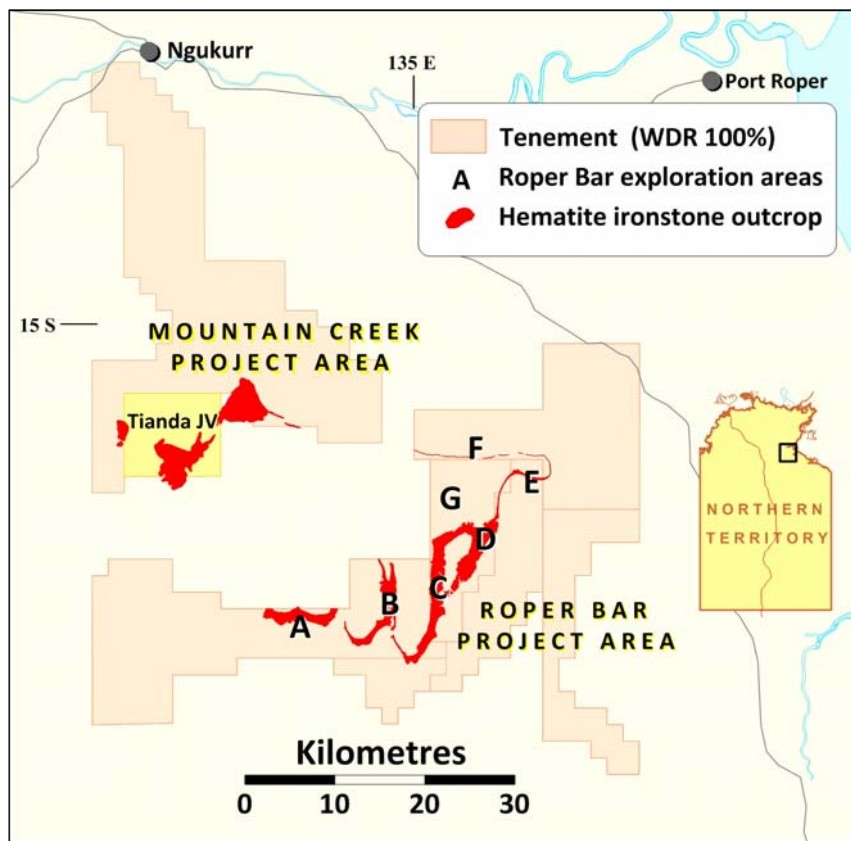


Figure 1. Roper Bar Iron Ore Province location plan

For further information please contact:

**Norm Gardner**  
Managing Director  
Western Desert Resources  
Telephone: +61 8 8177 8800

## Background

The Roper Bar Iron Ore Province covers about 1,900 km<sup>2</sup> within eight granted exploration licenses in the Northern Territory and includes an estimated 100 km<sup>2</sup> of outcrop of the target Sherwin Formation which hosts extensive hematite iron ore horizons. The Province is divided into two project areas – Roper Bar and Mountain Creek.

### JORC Mineral Resource Estimates from WDR's Roper Bar Project (30% Fe cut-off)

DEPOSIT AREA	Classification	Mt	Fe %	SiO <sub>2</sub> %	P %	Al <sub>2</sub> O <sub>3</sub> %	LOI %	Published
Area D	Inferred	90.7	37.2	31.5	0.008	3.2	9.6	Oct-09
Area D (north)	Inferred	116.5	40.3	26.3	0.002	2.2	11.0	Feb-11
Area E (south)	Inferred	17.5	36.1	30.8	0.003	2.4	12.4	Jun-12
Area E (south)	Indicated	75.8	38.7	29.9	0.005	2.6	9.9	Jun-12
Area E (east)**	Inferred	27.6	41.0	26.3	0.004	1.8	10.2	Jun-12
Area E (east)**	Indicated	15.6	41.2	26.3	0.004	1.9	10.0	Jun-12
Area E (east)**	Measured	28.3	42.2	26.4	0.004	2.0	8.9	Jun-12
Area F *	Inferred	5.5	46.6	22.7	0.006	2.7	6.1	Feb-12
Area F *	Indicated	24.6	49.3	22.0	0.006	3.2	2.6	Feb-12
<b>TOTAL</b>		<b>402</b>	<b>40.0</b>	<b>28.0</b>	<b>0.005</b>	<b>2.5</b>	<b>9.7</b>	

\* Includes DSO grade of 15.5Mt @ 59.5% Fe, 9.6% SiO<sub>2</sub>, 2.2% Al<sub>2</sub>O<sub>3</sub>, 0.01% P and 2.1% LOI

\*\* Includes DSO grade of 16.6Mt @ 54.2% Fe, 15.9% SiO<sub>2</sub>, 1.2% Al<sub>2</sub>O<sub>3</sub>, 0.01% P and 4.0% LOI

### Competent Person's Statements

*The information in this report that relates to Mineral Resources is based on information compiled by Sharron Sylvester who is a full-time employee of AMC Consultants Pty Ltd and a Member of the Australian Institute of Geoscientists and has sufficient experience relevant to the styles of mineralisation and type of deposit under consideration to qualify as a Competent Person as defined in the 2004 edition of the Australasian Code for the Reporting of Exploration Results, Mineral Resources and Ore Reserves (JORC code). Sharron Sylvester consents to the inclusion of this information in the form and context in which they occur.*

*The information in this report that relates to Exploration Results is based on information compiled by Graham Bubner who is a Member of the Australian Institute of Geoscientists. Mr Bubner is a full-time employee of Western Desert Resources Ltd and has sufficient experience relevant to the styles of mineralisation under consideration and to the subject matter of the report to qualify as a Competent Person as defined in the 2004 edition of the Australasian Code for the Reporting of Exploration Results, Mineral Resources and Ore Reserves (JORC code). Mr Bubner consents to the inclusion in the report of the matters based on his information in the form and context in which they occur.*

### Geological Information

*The potential quantity and grade of any exploration target is conceptual in nature and there has been insufficient exploration to define a Mineral Resource. It is uncertain whether further exploration will result in a larger, smaller, or any Mineral Resource.*