



QUARTERLY ACTIVITIES STATEMENT

For the quarter ending 31 December 2012

HIGHLIGHTS

- **Glandore Project**
 - 1,000m RC drilling booked for March Quarter 2013

- **Glandore Regional Hub**
 - Leases rationalised to focus on core areas and reduce expenditure commitments

- **Jundee South Project**
 - Second Phase drilling of 905m completed and hits thick mineralisation
 - HyMap identified anomalous structures confirmed by drilling
 - 2,000m RC Drilling booked in March Quarter

- **Gindalbie Project**
 - HyMap Survey interpretation reveals anomalies
 - RC drilling booked for March Quarter on gold occurrence at Lady Lauren

- **Regional Exploration**
 - Paul Well (Laverton East) HyMap anomalies to be sampled in March Quarter



EXPLORATION ACTIVITIES

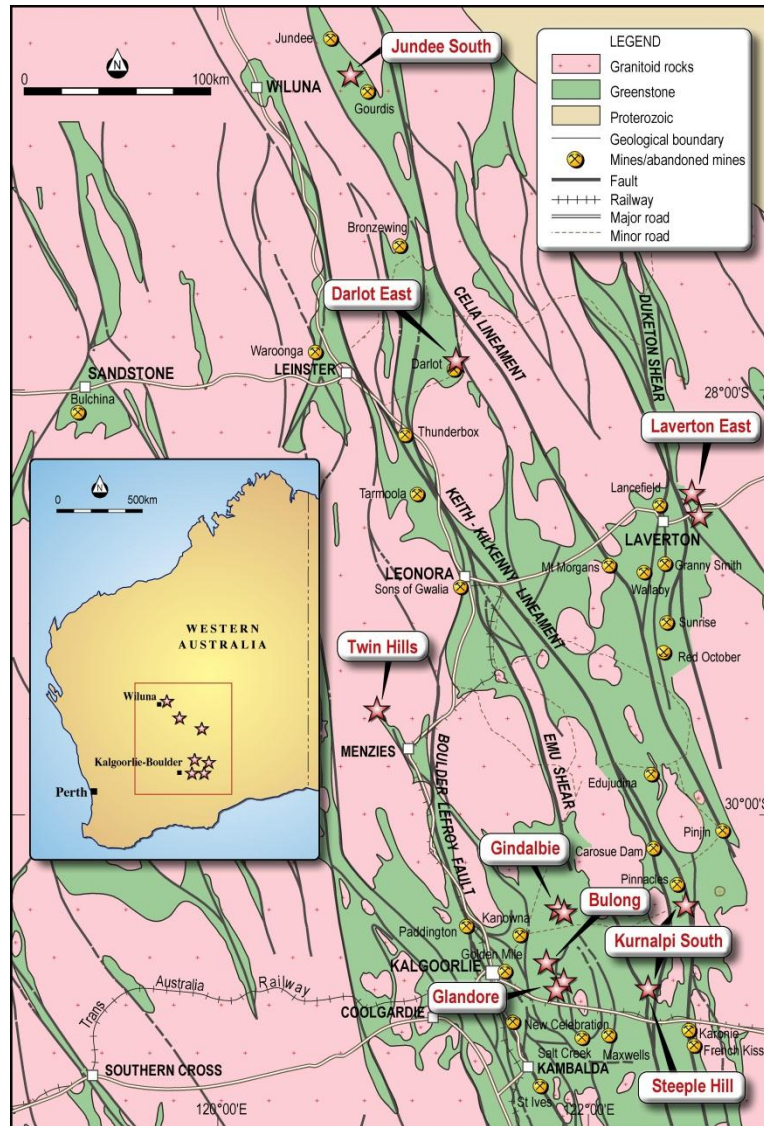


Figure 1 Aruma Exploration Areas in Western Australia

Aruma Resources Limited ("Aruma") has three advanced gold exploration projects, **Glandore**, **Jundee South**, and **Gindalbie**; located near proven gold producing centres of the Eastern Goldfields of Western Australia, which is considered to be both highly prospective for gold as well as highly amenable for the development and exploitation of new deposits. The next quarter's exploration program has been designed to prioritise scheduled drilling of these defined targets.

The Company is committed to its strategy of efficient exploration to confirm or disprove potential targets, with a view to developing a gold production hub centred on its flagship Glandore Project.

Aruma Resources Limited

ABN 77 141 335 364 ASX: AAJ
Suite 33, 18 Stirling Highway, Nedlands WA 6009
Locked Bag 2000, Nedlands WA 6909, Australia
T+61 8 6389 1799 | F+61 8 6389 0112 | Wwww.arumaresources.com



**QUARTERLY ACTIVITIES STATEMENT
FOR THE QUARTER ENDING 31 December 2012**

EASTERN GOLDFIELDS	Glandore Hub	Glandore Project - 40km east of Kalgoorlie-Boulder Status - Ready to drill on Western Anomalies, Eastern Anomalies exploration in discussion with DIA
		Gindalbie Project - 60km north-east of Kalgoorlie-Boulder Status – Gold Specimen found at Lady Lauren Target
		Bulong Project - 30 km east of Kalgoorlie-Boulder Status – Awaiting grant and data base assembled
	Regional Projects	Twin Hills Project - To be returned to owner in good standing
		Jundee South Project - 20km south of Jundee Mine Status - Third Pass RAB drilling confirms >1g/t Au over 400m by 100m area
		Laverton East Project - 20km east of Laverton Status - Paul Well (Northern) Lease has multiple HyVista Targets

TABLE 1 ARUMA LEASES

Glandore Project

The Glandore Project is located approximately 40km east of Kalgoorlie-Boulder. After 18 months of scientific study using HyVista, Fluid Flow Modelling, PIMA Analysis and magnetics, the Western Area has been cleared for drilling, and this will occur in the coming (March) quarter.

This drilling will investigate the anomalies seen in Figure 2 below.

Aruma Resources Limited

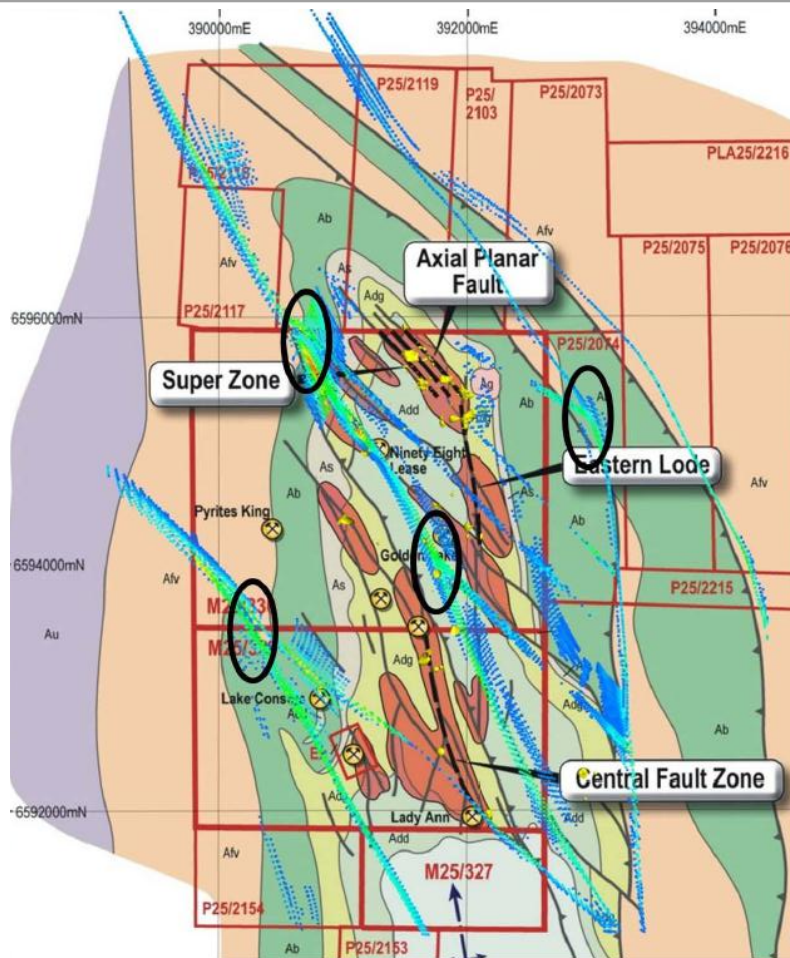


Figure 2 *Glandore Geology and Tenements with Fluid Flow Targets*

The composite Figure 2 above shows the leases at Glandore with geology, the Fluid Flow Modelling and targets generated. The initial investigation will be in the western half of the tenements and the figure shows the undrilled anomalies. Previous drilling was focused on the Axial Planar and Super Zones.

These zones are significant in demonstrating that the mineralising system at Glandore is strong and capable of high-grade thick zones, albeit of limited extent to date. The Fluid Flow modelling was carried out to locate areas where this mineralising system would be capable of creating large continuous zones.

Glandore Hub Project

The Glandore Hub Project is located in a 60km radius of the Glandore Project. The possibility of Satellite projects within easy trucking distance is a policy common to many successful producers such as Integra, Silver Lake (now merged), Carrick Gold (KalNorth Gold Mines Ltd), and Saracen in the area.

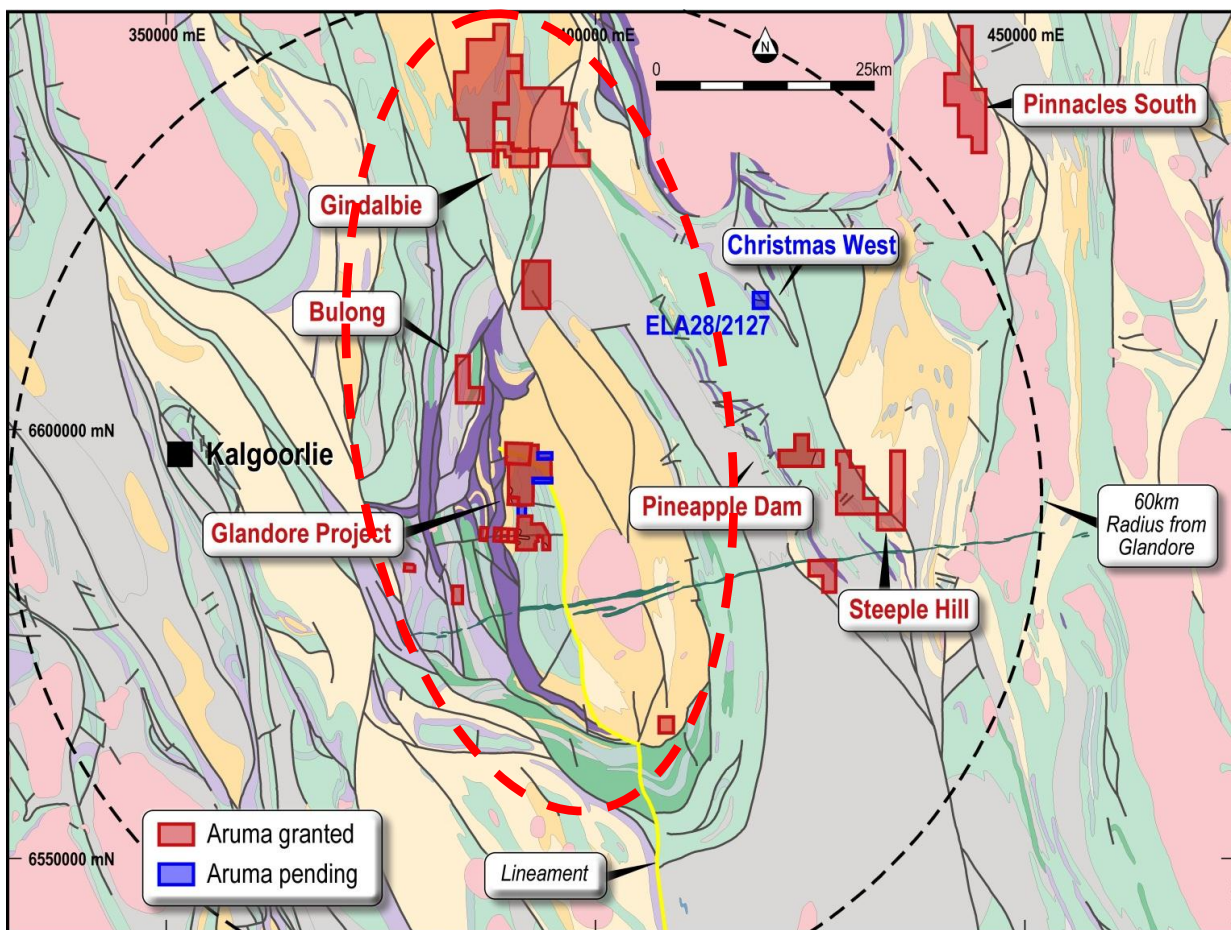


Figure 3 Glandore Hub current leases and main focus area (red dashed ellipse)

The main leases that are advanced are Glandore and Gindalbie, and the eastern leases are being dropped or sold. There are interesting anomalies in historical data being found at Bulong and the South-West PLs below Glandore. This fits with the aim of investigating the Salt Creek - Majestic Structure.



Jundee South Project

The Jundee South Project (E52/1461) is located 60km east of Wiluna and 25km south of the Jundee Mine. The 2011-2012 RAB programs consisted of 2,562 m of RAB in 75 vertical drill holes following up previously identified soil anomalies that had not been drilled. One soil sample result produced a 16.5g/t Au value in the area near the current Western Area of mineralisation (Normandy Mining Limited, 1992).

The west-north-west trending lineaments can be seen in Figure 4 and reflect the structures that control the mineralisation at the nearby Gourdis and Vause Deposits. The complete tenement area has been evaluated again using geochemistry, structure and the HyMap/Magnetics in light of this discovery. The focus in the short term will be to investigate bedrock mineralisation at the Western Area to evaluate the thick and high grade mineralisation reported previously.



QUARTERLY ACTIVITIES STATEMENT
FOR THE QUARTER ENDING 31 December 2012

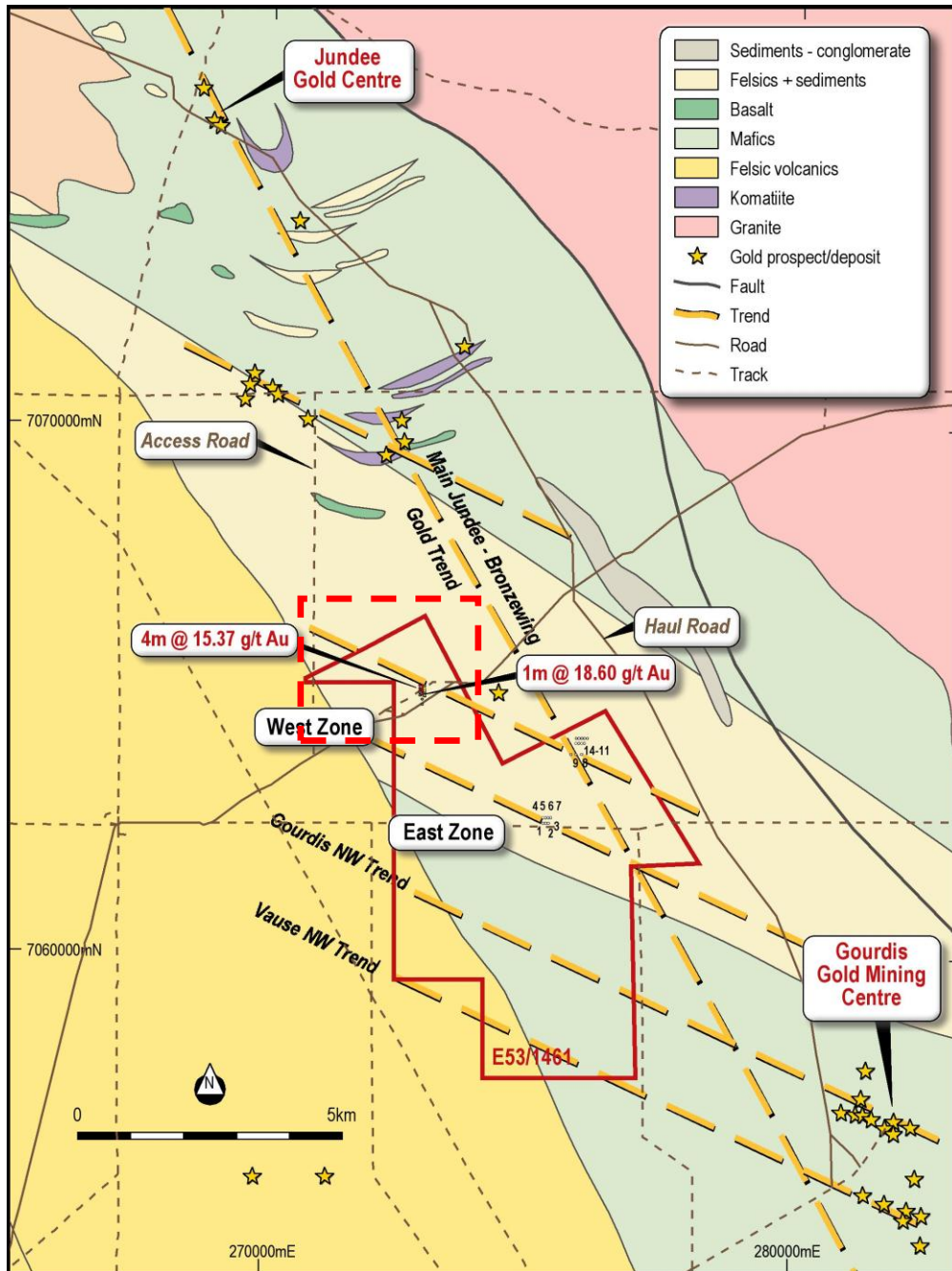


Figure 4 Drilling Plan on Geology with Figure 2 area (Enlargement) shown in red rectangle

Aruma Resources Limited

ABN 77 141 335 364 ASX: AAJ
Suite 33, 18 Stirling Highway, Nedlands WA 6009
Locked Bag 2000, Nedlands WA 6909, Australia
T+61 8 6389 1799 | F +61 8 6389 0112 | W www.arumaresources.com

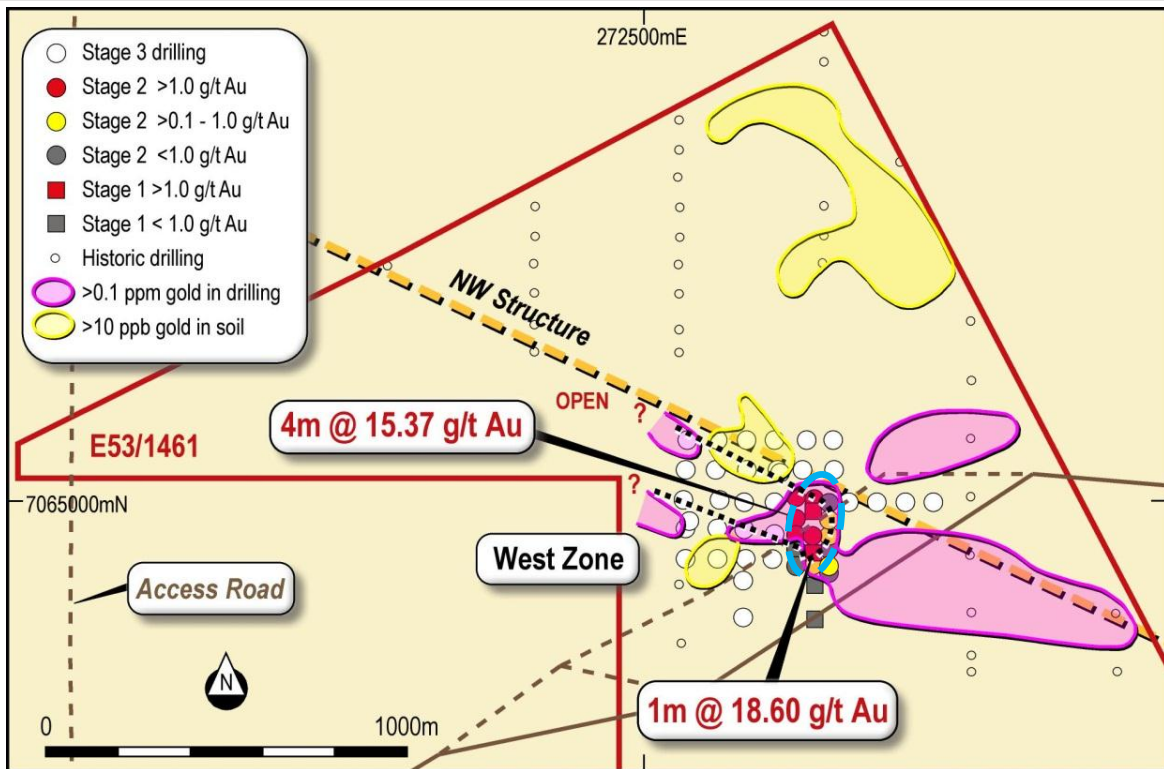


Figure 5 Drilling location plan with Geochem and Drilling anomalies and the RC target area as a blue ellipse

Results from resplits of October Drilling

The results of the resplits are listed below in Tables 2 and 3.

Hole	Easting	Northing	From (m)	To (m)	Interval (m)	Average (g/t Au)
JSR50	272881	7065021	19	20	1	0.40
JSR53	272801	7064942	5	12	7	0.56
JSR59	272637	7065181	10	11	1	1.10
JSR63	272884	7064926	10	28	18	0.26
JSR63		including	19	26	7	0.48
JSR63			34	35	1	0.65
JSR63			40	41	1	0.10

Table 2 Anomalous 1m Resplits of the October 2012 Drilling at Jundee South



QUARTERLY ACTIVITIES STATEMENT
FOR THE QUARTER ENDING 31 December 2012

Hole	Easting	Northing	From (m)	To (m)	Average (g/t Au)
JSR53	272801	7064942	10	11	1.23
JSR53	272801	7064942	11	12	1.04
JSR59	272637	7065181	10	11	1.1
JSR63	272884	7064926	19	20	1.52

Note: All holes vertical and assays by Fire Assay 50g

Table 3 *1m Resplits >1g/t of the October 2012 Drilling at Jundee South*

The resplits have extended the mineralised Western Area at Jundee south to a defined 400m by 100m area, and this will be RC drilled in January 2013. They have also confirmed the thick nature of the mineralisation, and this together with the high grades encountered are considered encouraging.

This highly mineralised area seen in Figure 5 above is now some 400m by 100m (Blue Ellipse) within a 1500m long trend ready to be RC drilled now that the Programme of Work (PoW) has been approved.

The mineralisation is in weathered Mafic/ultramafic with minor quartz veins and sediments, and consists of clays and limonite/goethite and is very soft down to 50 metres depth.

The significance of the October drill results were that the mineralisation is now defined over a 400m by 100m zone and the high grade thick zones are located in a 40m wide by 100m long initial target. This is shown in Table 4 below.

Hole	Easting	Northing	Total Interval (m)	Average (g/t Au)
JSR033	272960	7065040	17	1.87
JSR034	272958	7064978	12	6.58
JSR035	272960	7064941	10	1.53
JSR037	273000	7064940	3	1.43

Note: All holes vertical and assays by Fire Assay 50g

Table 4 *Thick and High grade Mineralisation in the RAB area*

The Figure 6 below is the HyMap interpretation which shows a definite bend in the WNW regional trend which hosts the RAB mineralisation (yellow ellipse). The colours are defining the Goethite after Pyrite as RED with the Mica as GREEN and the alteration of Chlorite to Phengite by the Gold mineralising solution as BLUE.

Aruma Resources Limited



The Lease area in the northern part of E53/1461 is shown in yellow and the anomalies generated are easily seen to reflect mineralisation and structure.

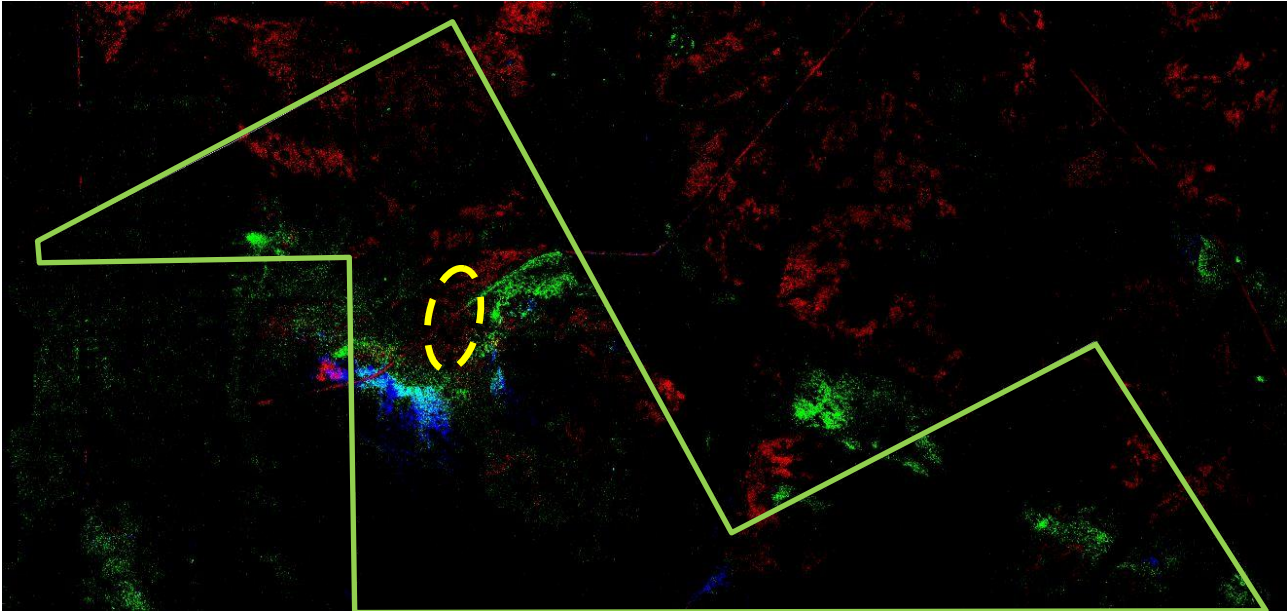


Figure 6 *HyMap Figure showing the Northern area of E53/1461 and the RC target area in Yellow ellipse*

There are now three types of targets at Jundee South Gold Project, namely:

1. Resource targets in the RAB Anomaly area;
2. Follow up targets under Drilling, HyMap and Geochemical anomalies; and
3. Regional HyMap and structural targets.

Gindalbie Project

The Gindalbie Project was flown with HyMap and interpreted by Aruma and HyVista staff in 2012. Field mapping and reconnaissance has shown visible gold at the Lady Lauren Shaft and this will be RC drilled in light of the Quartz Vein (hard) nature of the outcrop and the strong alteration of the rocks adjacent to the vein and workings. These workings are over a strike length of some 200m and are east - west across country.

The alteration associated with the Mayday Mines and Lady Lauren Shaft has been noted in several locations on the leases. A PoW has been approved and the Heritage Clearance completed. The most recently granted lease, EL27/453, will be explored in light of the HyMap Report. A 500m RC program is proposed in CY2013 after the PoW change is registered.

Aruma Resources Limited



QUARTERLY ACTIVITIES STATEMENT
FOR THE QUARTER ENDING 31 December 2012

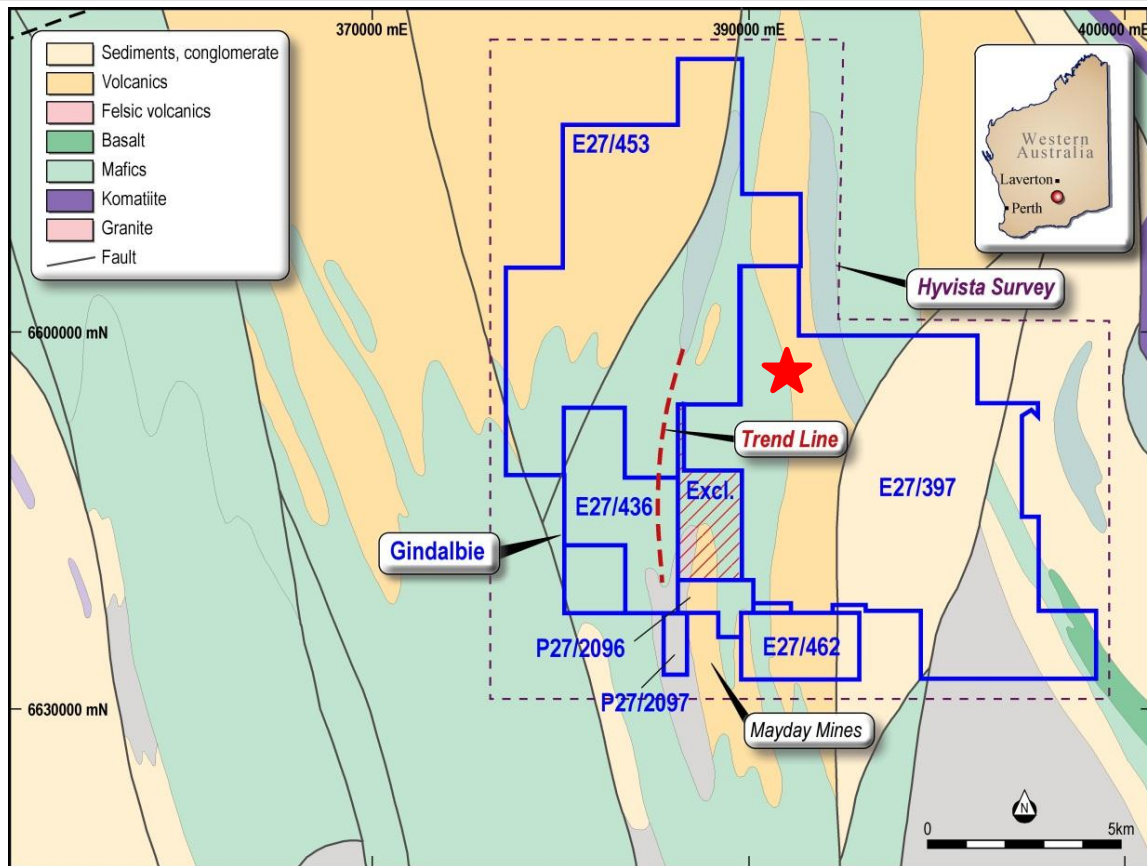


Figure 7 *Gindalbie Project and the Lady Lauren Line Gold assay (25g/t and visible gold in a rock chip on red star)*

Aruma Resources Limited

ABN 77 141 335 364 ASX: AAJ
Suite 33, 18 Stirling Highway, Nedlands WA 6009
Locked Bag 2000, Nedlands WA 6909, Australia
T+61 8 6389 1799 | F +61 8 6389 0112 | W www.arumaresources.com



Steeple Hill Project

The Steeple Hill area has been rehabilitated and further work will be reconsidered in light of falling Ni and Cu prices.

Laverton North Project

The Paul Well lease area (EL28/2475) will be sampled after the HyMap interpretation in October revealed several anomalies.

Proposed Exploration Activities for Q3 2012/2013

GLANDORE

- Initial drilling scheduled on Fluid flow Model under covered western areas
- 61 RAB holes pegged
- 20 RC holes pegged and PoW submitted

GINDALBIE PROJECT

- Total package of 150 km² of covered prospective ground
- Heritage and site access completed
- 6 RC holes scheduled on Lady Lauren Quartz Vein

LAVERTON EAST

- Geochem over new Paul Well HyMap anomalies

REGIONAL ELs

- Field inspection and previous work will be investigated

Other Projects

In addition to its current projects in Western Australia, Aruma continues to evaluate potential project opportunities both locally and overseas.

Rehabilitation

All of Aruma's leases where drilling has occurred are being rehabilitated in the March Quarter.



ASX ANNOUNCEMENT
31 January 2013

**QUARTERLY ACTIVITIES STATEMENT
FOR THE QUARTER ENDING 31 December 2012**

For further information please contact:

Company:

Peter Schwann
Managing Director
Aruma Resources Limited
info@arumaresources.com
Tel: +61 (0) 8 6389 1799
Mob: +61 (0)417 946 370

Media:

Annette Ellis
Cannings Purple Communications
Tel: +61 (0) 8 6314 6300
aellis@canningspurple.com.au

The information in this release that relates to Exploration Results, Mineral Resources or Ore Reserves is based on information compiled by Peter Schwann who is a Fellow of the Australasian Institute of Mining and Metallurgy and Chartered Professional (Geology). Mr Schwann is an employee of the Company. Mr Schwann has sufficient relevant experience to qualify as a Competent Person as defined in the JORC Code (2004) and consents to the inclusion of this information in the form and context in which it appears.

Aruma Resources Limited

ABN 77 141 335 364 ASX: AAJ
Suite 33, 18 Stirling Highway, Nedlands WA 6009
Locked Bag 2000, Nedlands WA 6909, Australia
T+61 8 6389 1799 | F +61 8 6389 0112 | W www.arumaresources.com