



EXPLORATION UPDATE

Highlights

- **Program of Work (PoW) approved for Steves Prospect at Glandore**
- **Mapping and infill geochemical survey underway at Steves**
- **PoW approved for Gindalbie with site access underway**
- **RC drilling to commence in June on Glandore and Gindalbie**

Active Western Australian gold explorer, **Aruma Resources Limited (ASX: AAJ)** is pleased to announce the approval of an extension of the Program of Works for follow-up Reverse Circulation (RC) drilling at Glandore. The PoW for Gindalbie has also been approved and site access is underway.

Significant anomalous gold intercepts were returned from Aruma's **Steves and Grunts Prospects** located 40km east of Kalgoorlie. The results are shown in Table 1 below.

The previously announced RC sample assays (21 May 2013) included 5m at 4.3g/t Au from 60m in GRC103 and are on a quartz vein system with associated carbonate lode style alteration. This intersection was underneath a surface geochemical sample of 1.01 g/t Au.

RC	Dip	GDA94	GDA94	Depth	Depth	Au (g/t)	Intercept	Average
Drillhole	Degrees	Easting	Northing	From	To	FA 30g)	m	Au g/t
GRC080*	-60	390080	6593820	94	95	1.03	1	1.03
GRC094**	-60	390900	6595310	68	69	3.25	1	3.25
				70	71	1.32	1	1.35
GRC100**	-60	390548	6595374	22	23	1.38	1	1.38
GRC103**	-60	390472	6595573	60	61	4.08	5	4.31
				61	62	5.00		
				62	63	7.80		
				63	64	3.23		
				64	65	1.43		

Table 1 Drill hole intersections >1.0 g/t Au from RC drilling

Hole locations * = Grunts, ** = Steves

The initial geochemical survey defined the mineralisation which is 350m long and up to 23m thick. The anomalous surface sampling included values up to 20 g/t Au. This is being sampled and mapped to better delineate the anomalism and to define the trend for the next drilling phase in June.

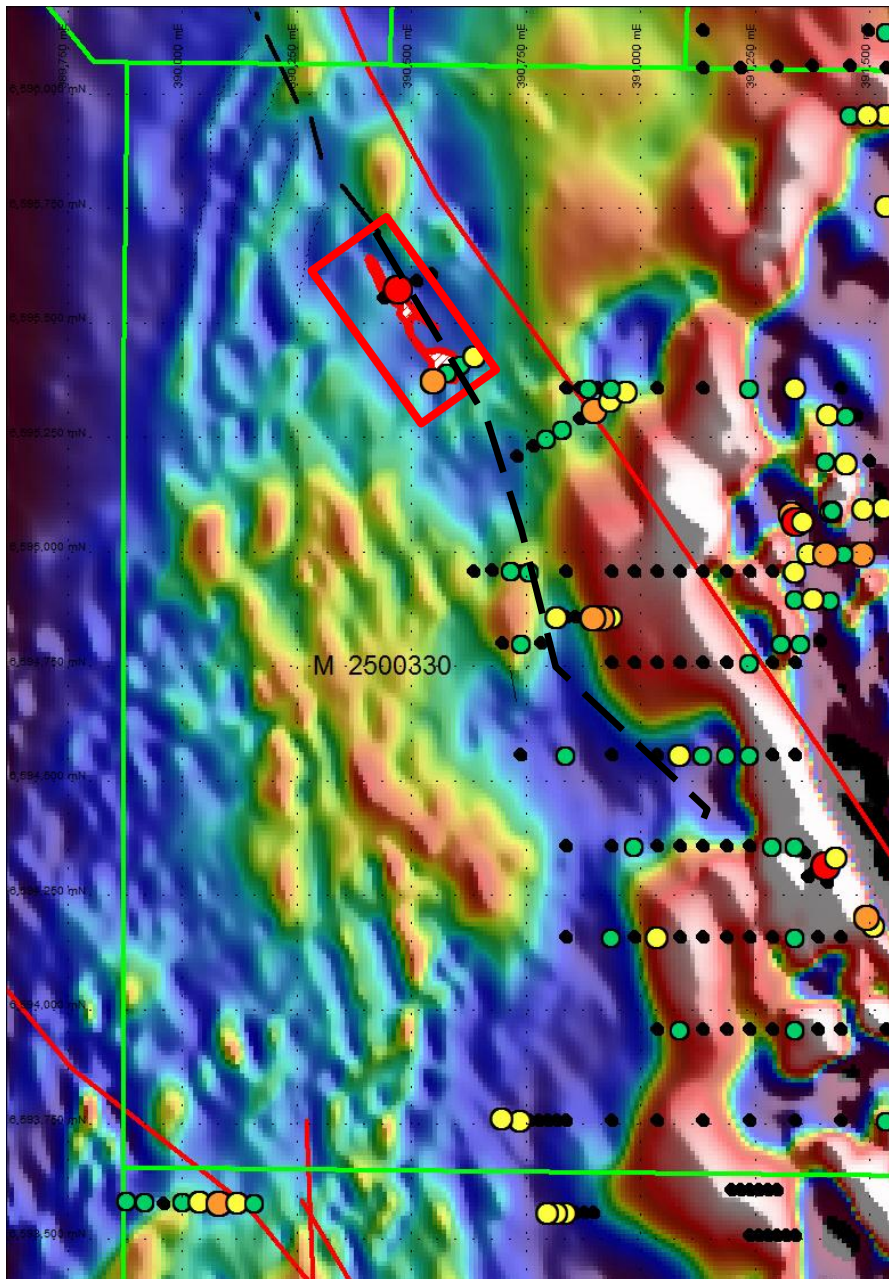


Figure 1 Aruma Resources' Steves Prospect infill drilling location (red rectangle) on magnetics with drill results (Dots) and anomaly trendline (black dashed). (Au in Holes = Red >5g/t, Orange >1g/t, Yellow >0.5g/t Au, Green >0.1g/t)

Drilling

The RC drilling to be undertaken at **Steves** will require between 1500m to 3000m as mapping, sampling and drilling results dictate. The new drilling at **Gindalbie** will involve the drilling of up to 10 RC holes for 1000m will also occur in June, with site access completed in early June. The two programs will be run together to save on mobilisation and travel costs.

Aruma Resources Limited

ABN 77 141 335 364 ASX: AAJ
Suite 33, 18 Stirling Highway, Nedlands WA 6009
Locked Bag 2000, Nedlands WA 6909, Australia
T +61 8 6389 1799 | F +61 8 6389 0112 | W www.arumaresources.com

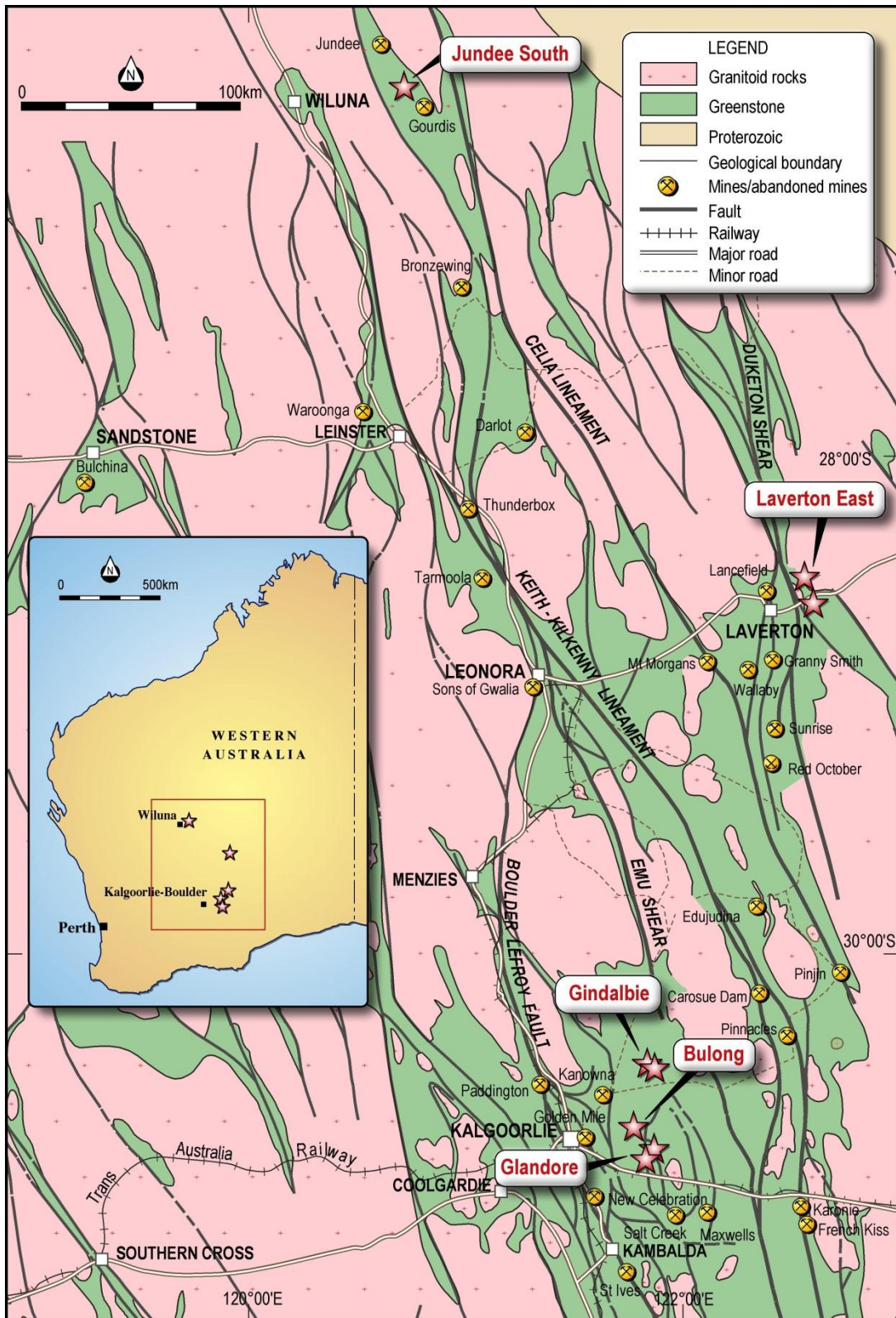


Figure 2 Aruma Resources' project locations in the Eastern Goldfields

Aruma Resources Limited

ABN 77 141 335 364 ASX: AAJ
Suite 33, 18 Stirling Highway, Nedlands WA 6009
Locked Bag 2000, Nedlands WA 6909, Australia

T +61 8 6389 1799 | F +61 8 6389 0112 | W www.arumaresources.com



PROJECTS PROGRESS

Figure 2 above shows Aruma's Project areas in Western Australia. Aruma is concentrating exploration on the three advanced projects at Glandore, Gindalbie and Jundee South Projects.

All of Aruma's Projects have strong gold indicators and proven high grade potential. The upcoming work is listed below and comprises:

- PoWs for **Gindalbie** and **Glandore** approved
- Further geochemical sampling and detailed mapping underway
- **Jundee South** awaiting heritage clearance to complete drilling
- RC drilling up to 5000m approved and scheduled
- The Company is well-funded for an exciting exploration year.

For further information please contact:

Peter Schwann
Managing Director
Aruma Resources Limited
Ph: +61 8 6389 1799
Mobile: +61 417 946 370
info@arumaresources.com

Competent Person's Statement

The information in this release that relates to Exploration Results, Mineral Resources or Ore Reserves is based on information compiled by Peter Schwann who is a Fellow of the Australasian Institute of Mining and Metallurgy and Chartered Professional (Geology). Mr Schwann is a full time employee of the Company.

Mr Schwann has sufficient relevant experience to qualify as a Competent Person as defined in the JORC Code (2004) and consents to the inclusion of this information in the form and context in which it appears.

Aruma Resources Limited

ABN 77 141 335 364 ASX: AAJ
Suite 33, 18 Stirling Highway, Nedlands WA 6009
Locked Bag 2000, Nedlands WA 6909, Australia
T +61 8 6389 1799 | F +61 8 6389 0112 | W www.arumaresources.com