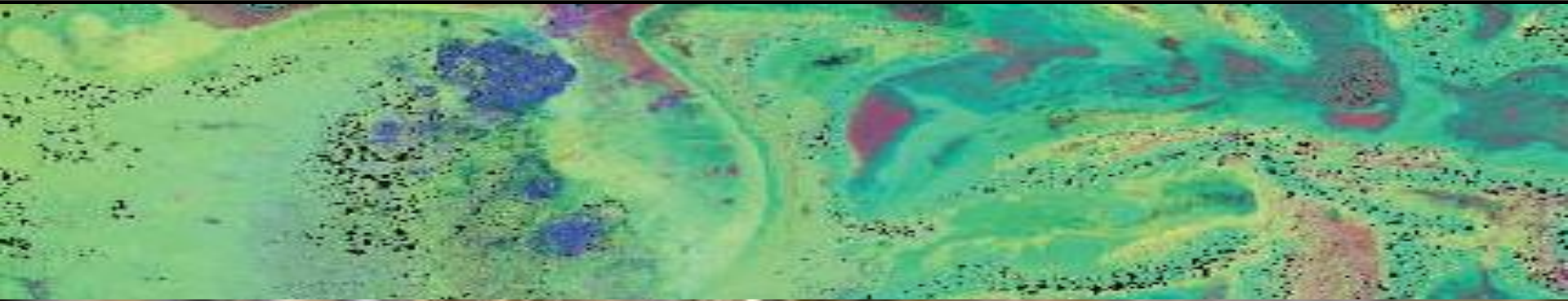




# ARUMA RESOURCES



## ARUMA'S GOLD TARGETS

Peter Schwann  
Managing Director

Aruma Resources Limited – Presentation  
April 2013

# Disclaimer /Competent Person's statement



## The information in this presentation:

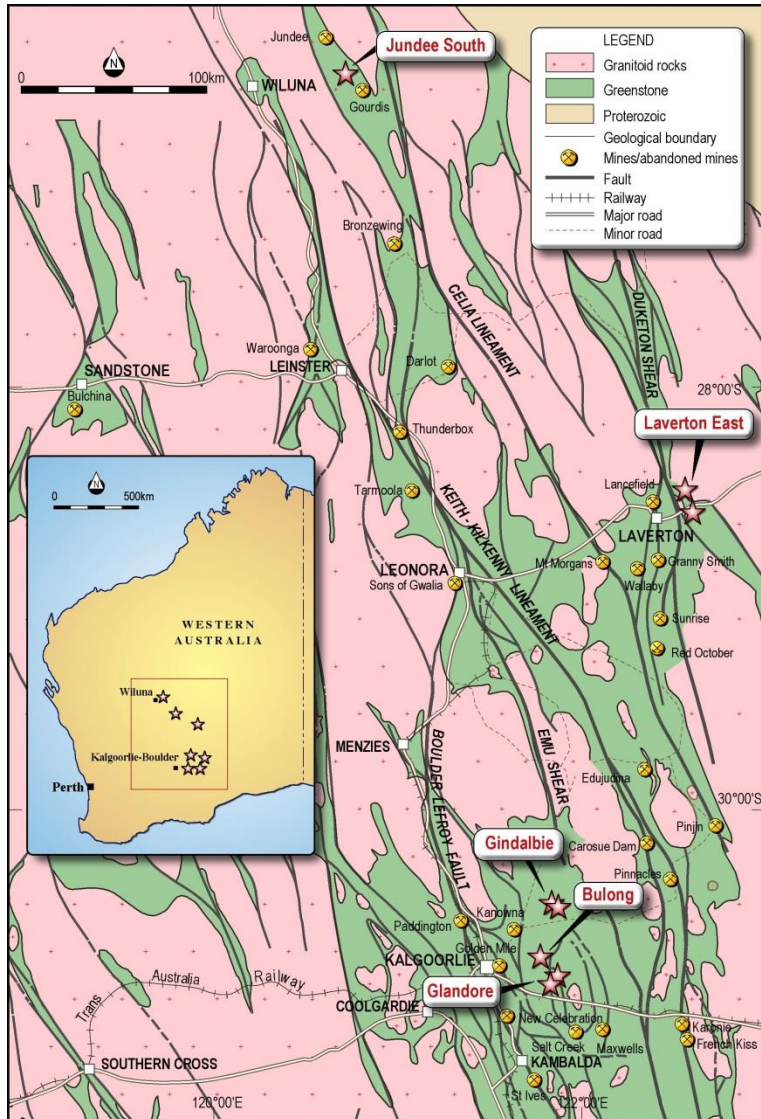
- was prepared with due care and attention and is current at the date of the presentation;
- is not an offer or recommendation to purchase or subscribe for securities in Aruma Resources Limited or to retain any securities currently held;
- does not take into account the potential and current individual investment objectives or the financial situation of investors;
- the information in this report that relates to Exploration Results, Mineral Resources or Ore Reserves is based on information compiled by Mr Peter Schwann, a full time employee of Aruma, who has sufficient experience to qualify as a Competent Person as defined in the 2004 Edition of the "Australasian Code for Reporting of Exploration Results, Mineral Resources and Ore Reserves";
- Mr Schwann consents to the inclusion in the presentation of the matters based on his information in the form and context in which it appears;
- actual results may materially vary from any forecasts (where applicable) in this presentation; and
- before making or varying any investment in securities in Aruma Resources Limited, all investors should consider the appropriateness of that investment in light of their individual investment objectives and financial situation and should seek their own independent professional advice.



## BECOME A GOLD PRODUCER BY

- EXPLORING KNOWN HIGH GRADE GOLD AREAS IN W.A.
- IDENTIFYING NEW MINERALISATION ZONES
- USING NEW TECHNOLOGY ON
  - previously explored areas with known gold mineralisation
  - covered extensions of known gold mineralisation
  - new areas of mineralisation remotely and cheaply
- ACTIVELY MANAGING ITS LANDHOLDING
  - by exploration, applications, options and relinquishing

# Project Locations

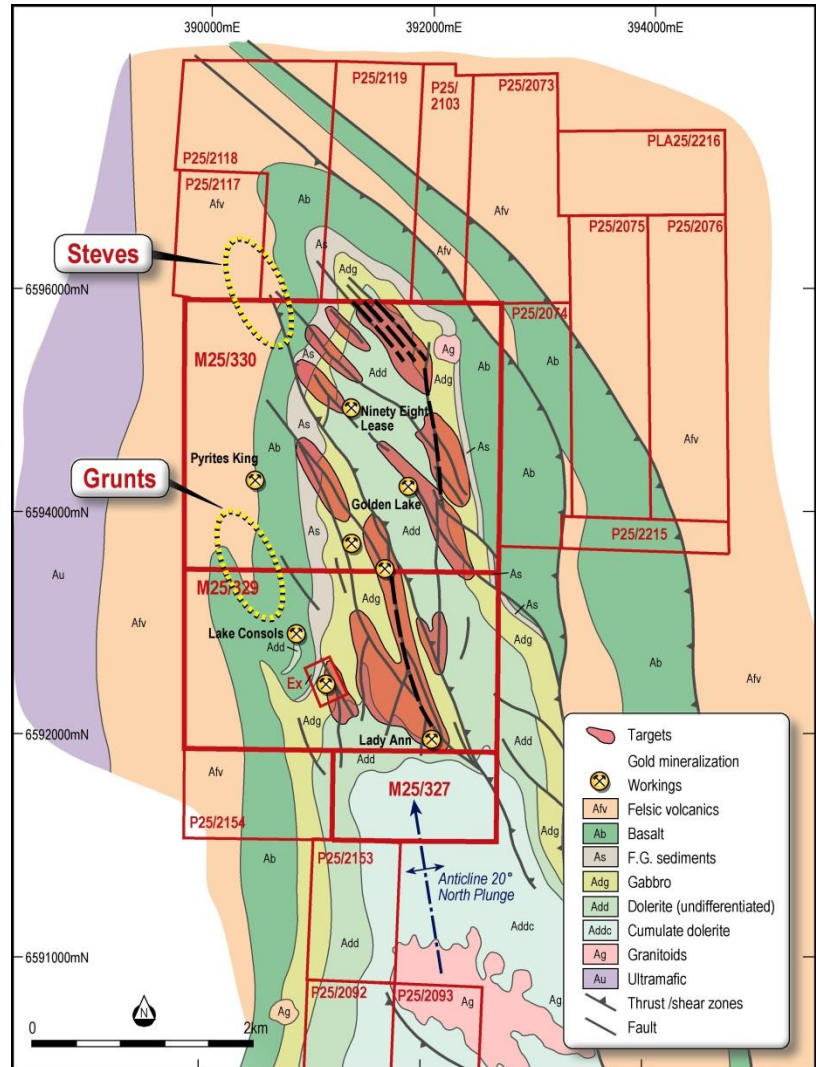


- **Glandore Project**
  - On Structure from Salt Creek-Majestic
  - High Grade large mineralising system
  - RC Drilling on visible gold at Steves and Grunts
  
- **Jundee South Project**
  - 25km south of Jundee Mine
  - Drilling defines 400X100m target at Marks
  - Heritage clearance planned at Marks
  
- **Gindalbie Project**
  - Targets from HyMap and sampling
  - RC Drilling on visible gold at Lady Lauren
  
- **Laverton East**
  - Northern Lease has two HyMap targets
  - Geochemical sampling done on targets

# Glandore Gold Project – A great address



- 40km from Kalgoorlie
  - **Land area >57km<sup>2</sup>**
- Strong gold system
  - **10m at 10 g/t**
- On major structures
  - **4 Fluid Flow targets**
  - **Drilling on visible gold**
- All approvals underway



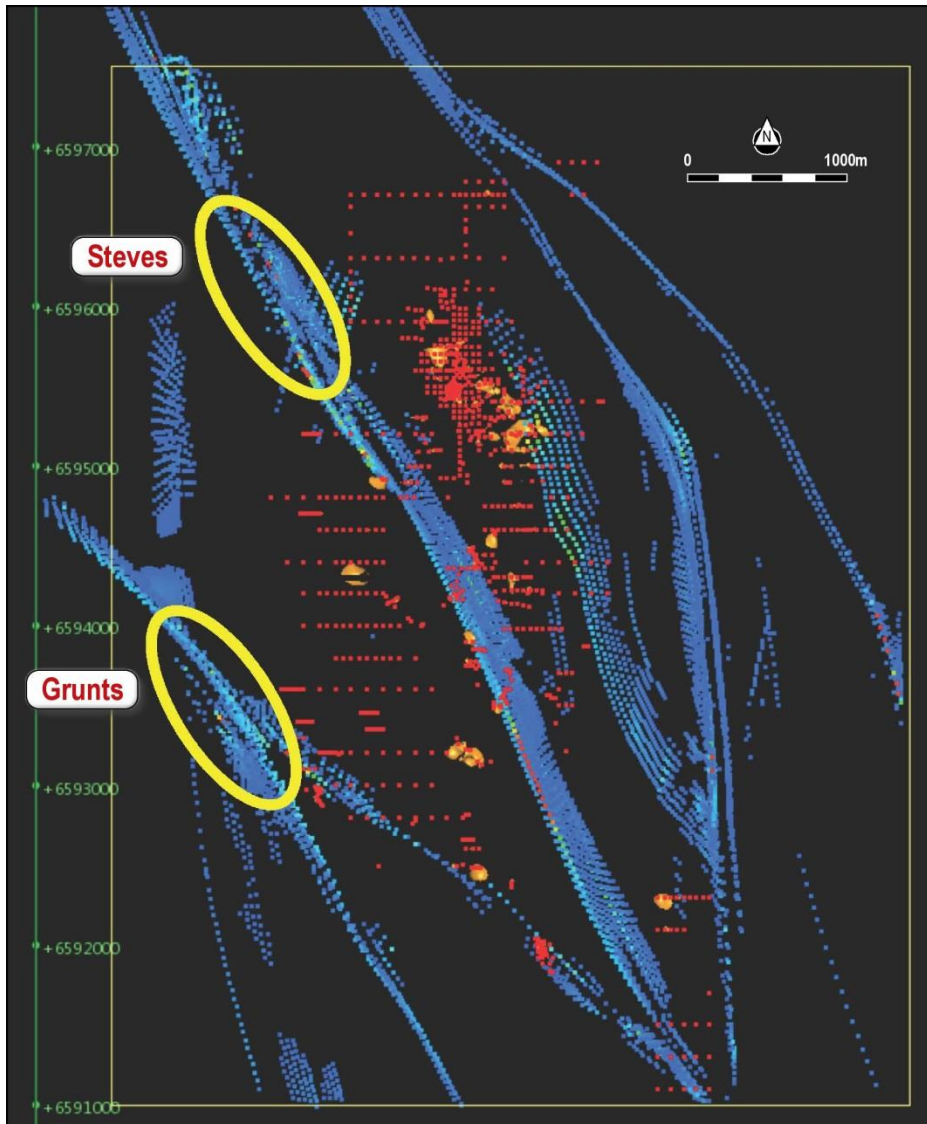




# Why we are here – Thickness & Grade

Location	Intersection	From
<b>Axial Planar Fault**</b>	<b>10m at 10.27 g/t Au</b>	<b>58m</b>
	<b>4m at 18.8 g/t Au</b>	<b>103m</b>
<b>Supergene Zone**</b> <b>(**Both these zones at the northern edge of Initial Leases)</b>	<b>8m at 10.4 g/t Au</b>	<b>18m</b>
	<b>9m at 8.37 g/t Au</b>	<b>17m</b>
	<b>9m at 3.43 g/t Au</b>	<b>15m</b>
	<b>2m at 43 g/t Au</b>	<b>38m</b>
	<b>5m at 4.99 g/t Au</b>	<b>36m</b>
<b>Central Fault Zone</b>  <b>Aruma Drilling</b>	<b>9m at 4.22g/t Au</b>	<b>13m</b>
	<b>7m at 2.48g/t Au</b>	<b>23m</b>
	<b>11m at 2.32g/t Au</b>	<b>surface</b>
	<b>2m at 4.77g/t Au</b>	<b>18m</b>

# Glandore drilling targets from Fluid Flow



- Undrilled targets
- Major structures in blue
- Yellow ellipses are gold targets
- PoW for western targets to be approved soon
- Drilling booked Q4 after rain
- Visible gold found at Steves target

# Glandore surface sampling at Steves



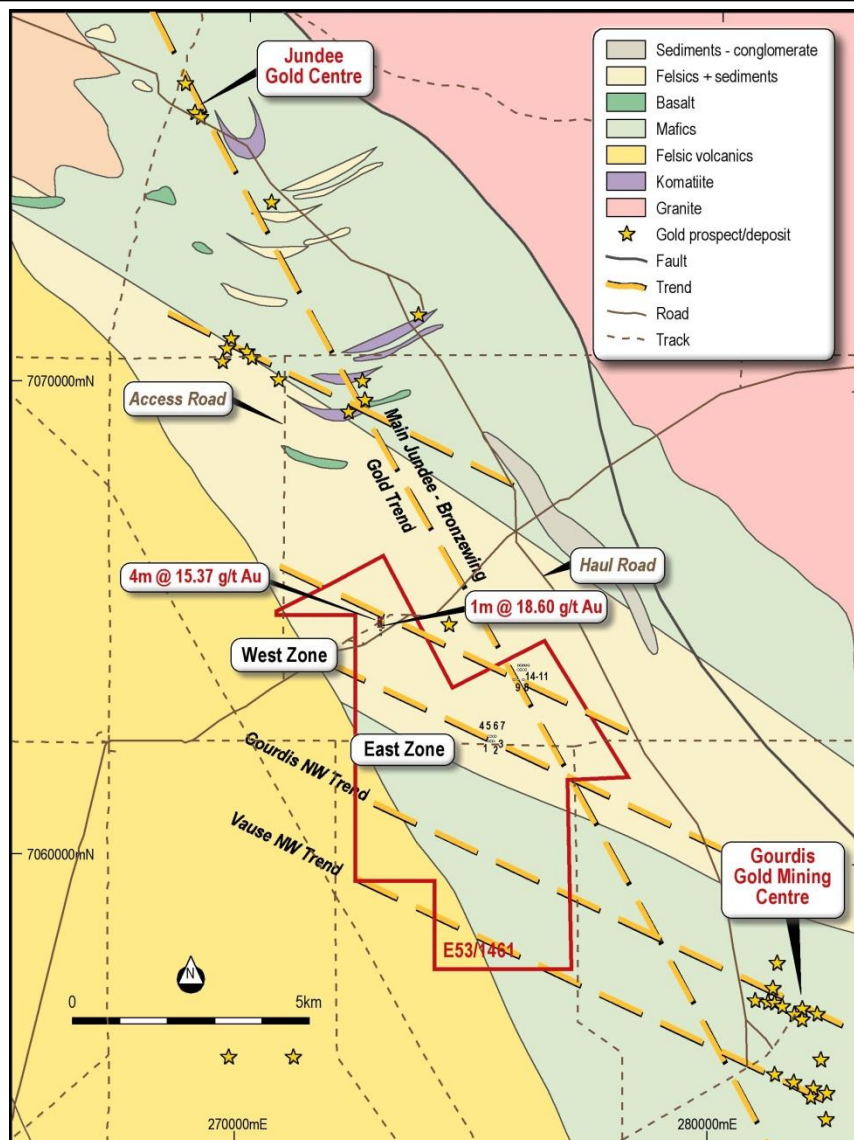
- Steves has 24.1g/t chip (ag16)
- Follow-up surface 1m sampling
  - 25% (55/223) samples >0.1g/t Au
  - 7 samples >1g/t, max 4.52g/t Au
  - 28m @ 0.34g/t & 20m at 0.28 g/t
- Major quartz vein in pink
- Red dots are planned drill holes
- Anomalous zone in yellow coincident with Fluid Flow target



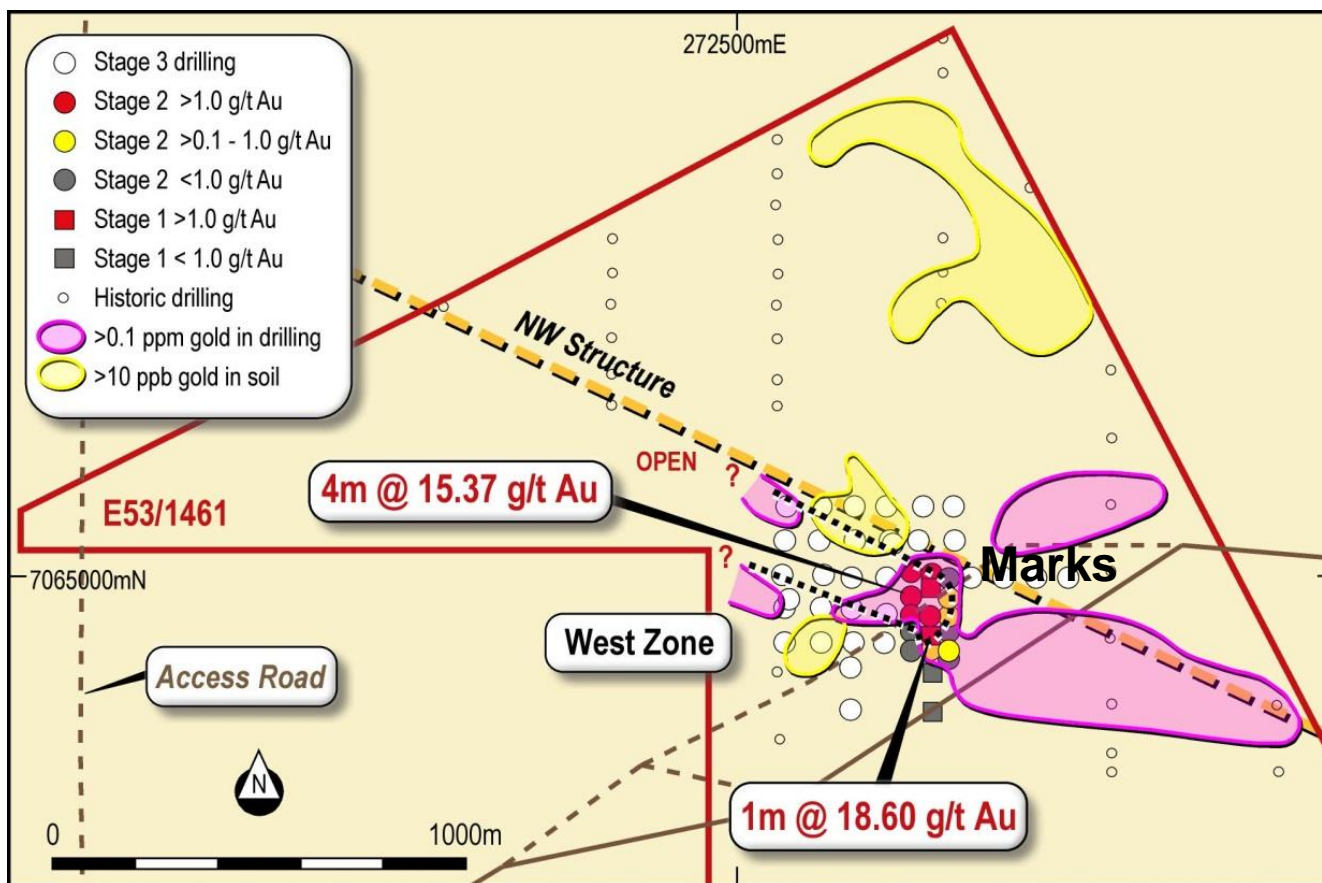
# Jundee South Project – A virgin discovery



- Located 60km from Wiluna
- 2.5km from Jundee haul road
- 25km from Jundee Mine
- 4 major lineaments
- Hymap anomaly on discovery
- RC drilling planned at Marks

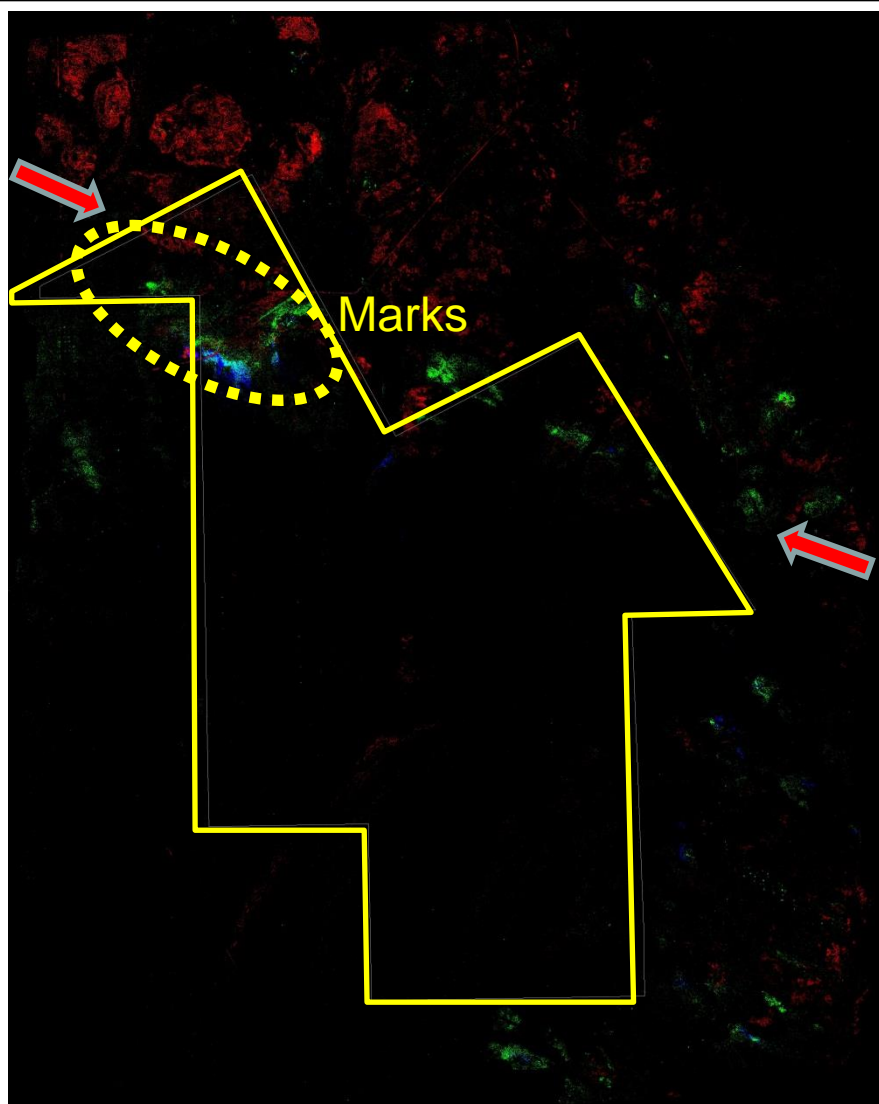


# Jundee South Western Area



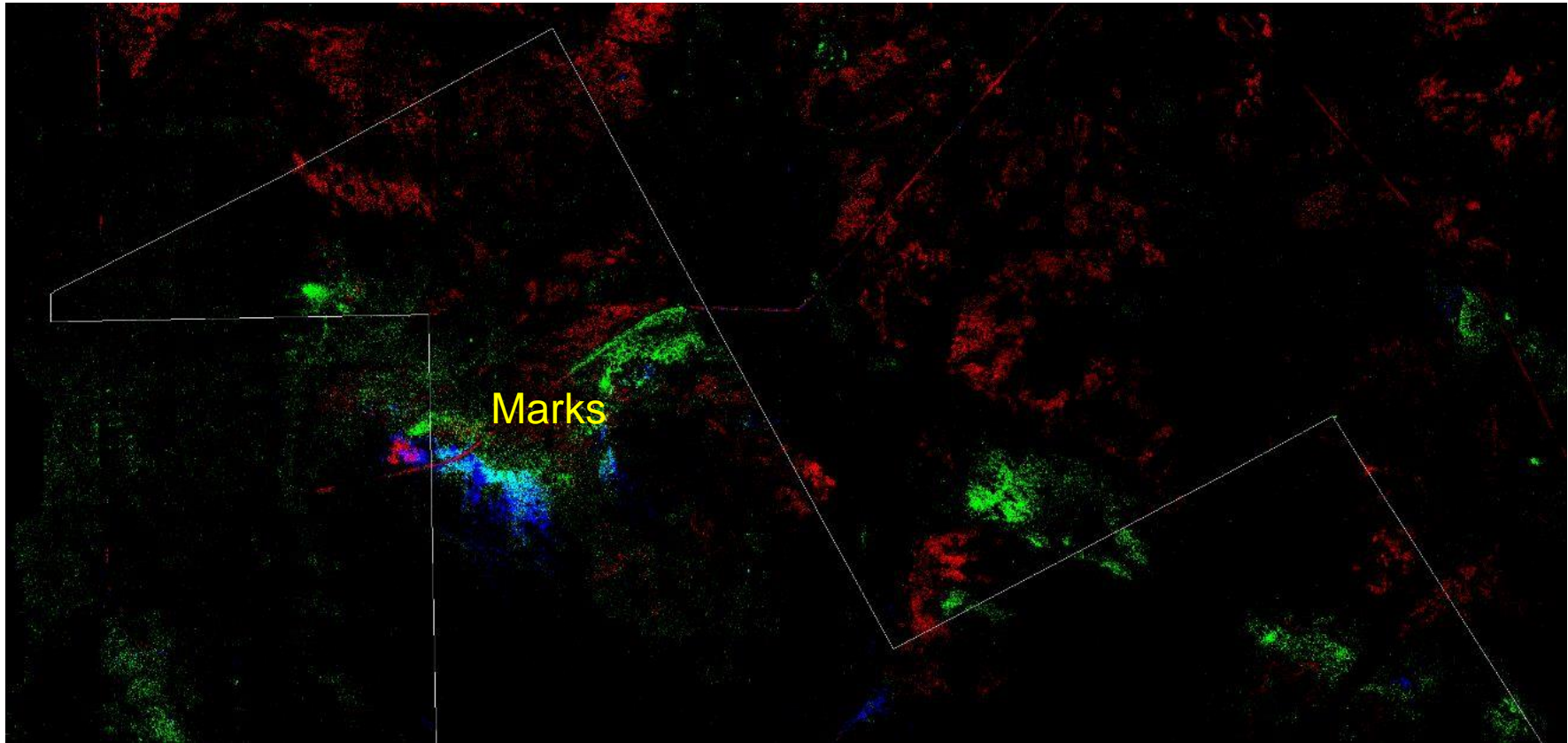
- JSR34 has >48m at 1.47g/t Au, JSR34 has 4m at 15.37g/t Au
- Planned drilling on 400m by 100m target (Marks)

# Jundee South Hymap



- Lease in yellow
- Drilling in yellow ellipse
- Hymap
  - Goethite red
  - Mica green
  - Chlorite product blue
- Structure clearly shown
- More targets along structure

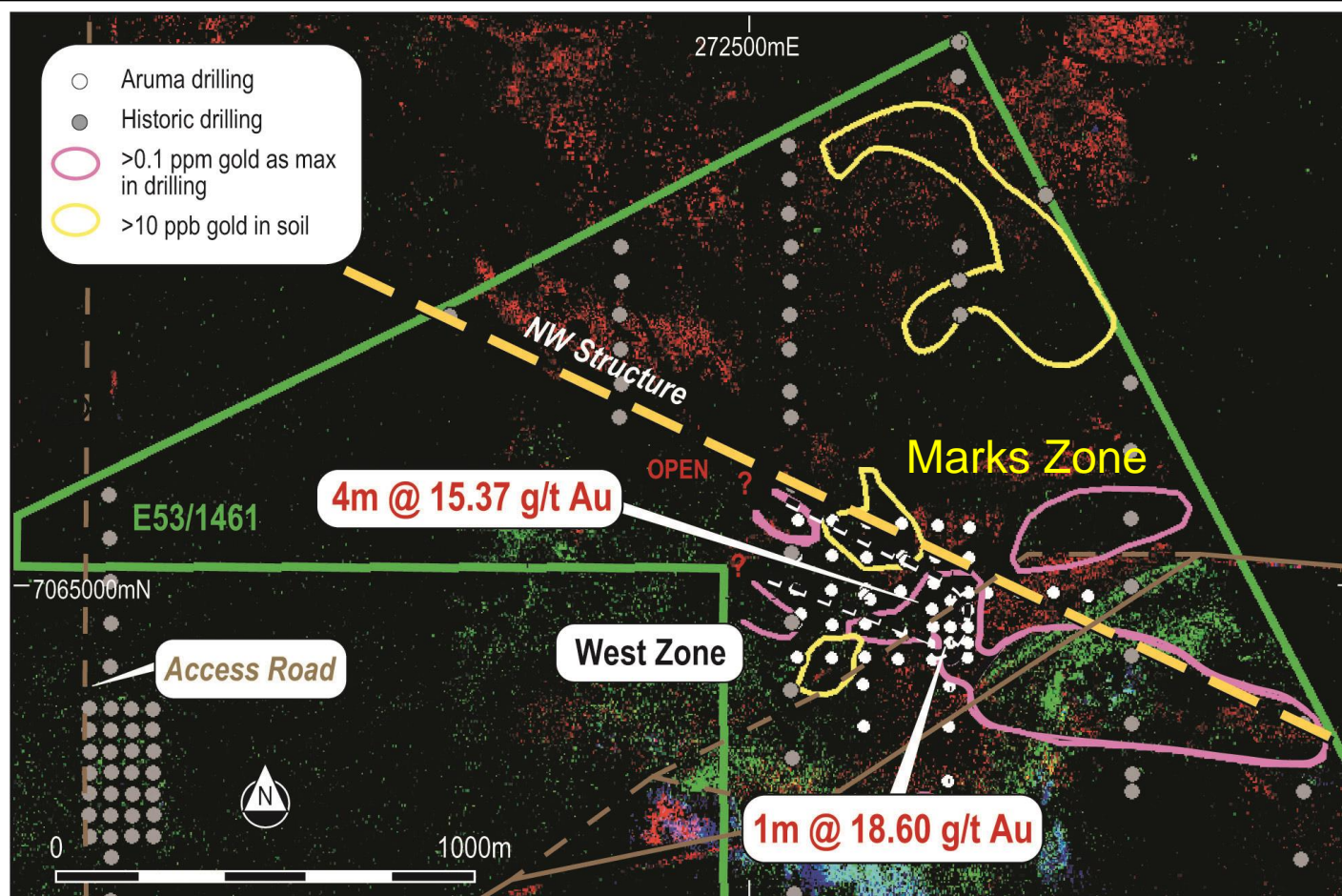
# Structure and Alteration Minerals



- Same minerals as previous slide
- Red = Goethite, Green = Chlorite and Blue = Phengite



# Structure, Alteration and Geochemistry




- Hymap, chemistry and drilling is successful

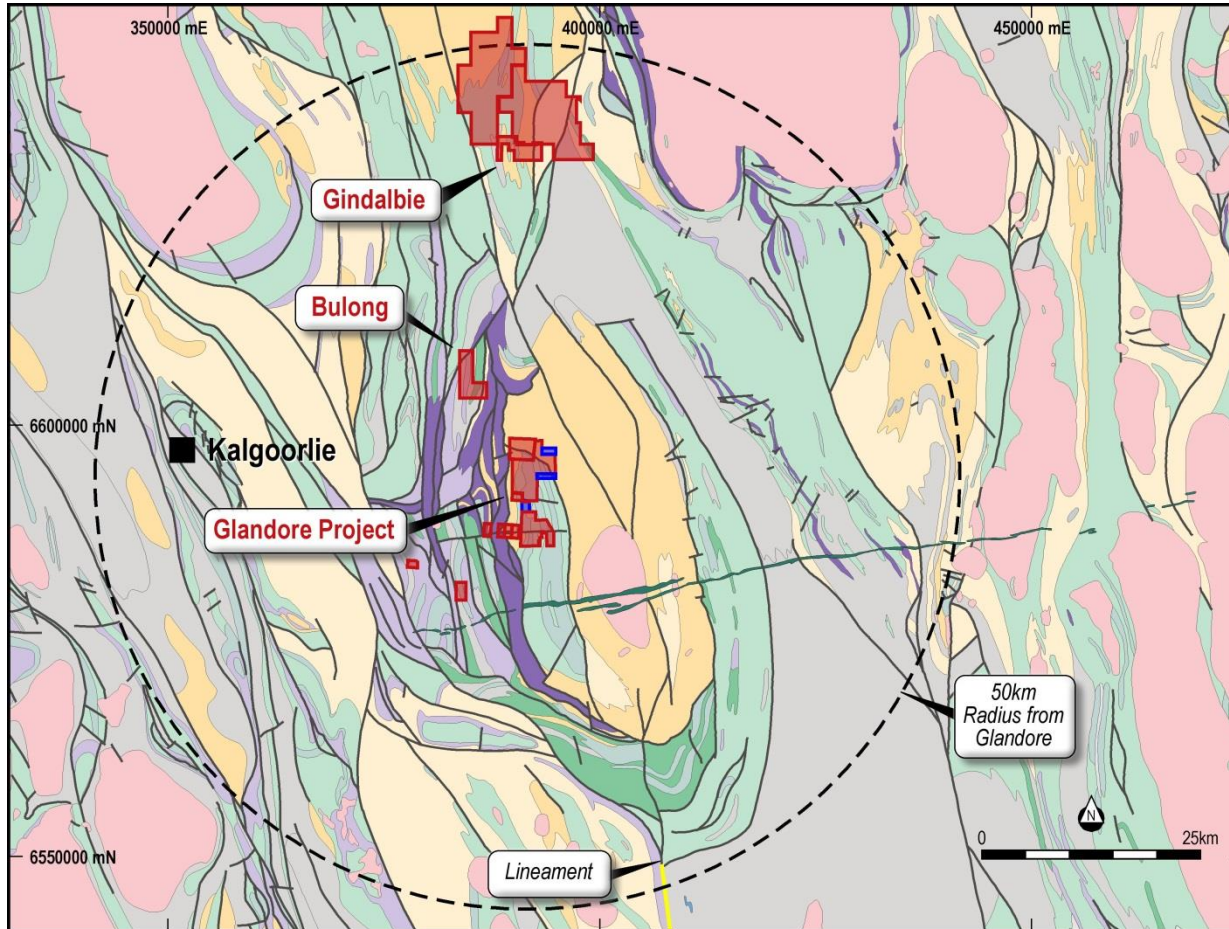


# Looking elsewhere on the Lease



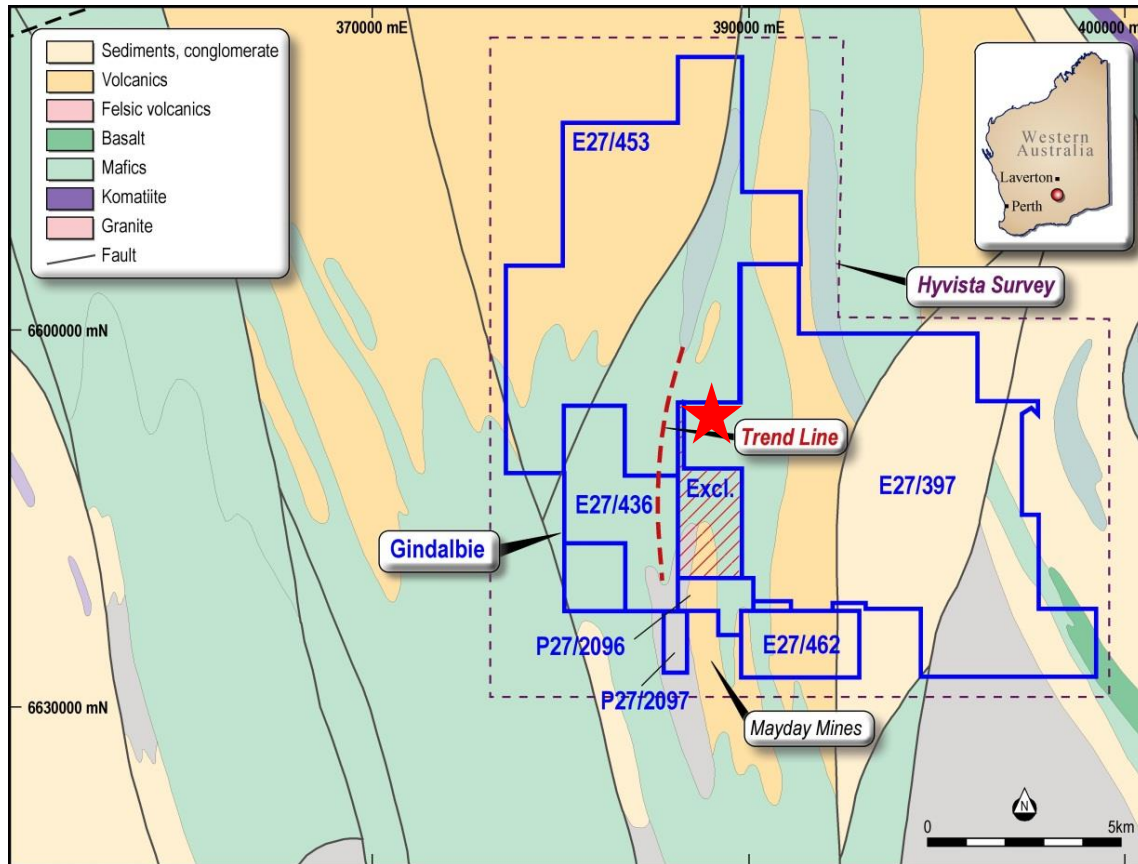
- Anomalies identified
- Previous work wide spaced
- New targets suggested
- Geochem and Hymap work
- Gaps are on structures 
- Possible stand alone operation

# Glandore Hub leases



Leases in a 50km radius of Glandore

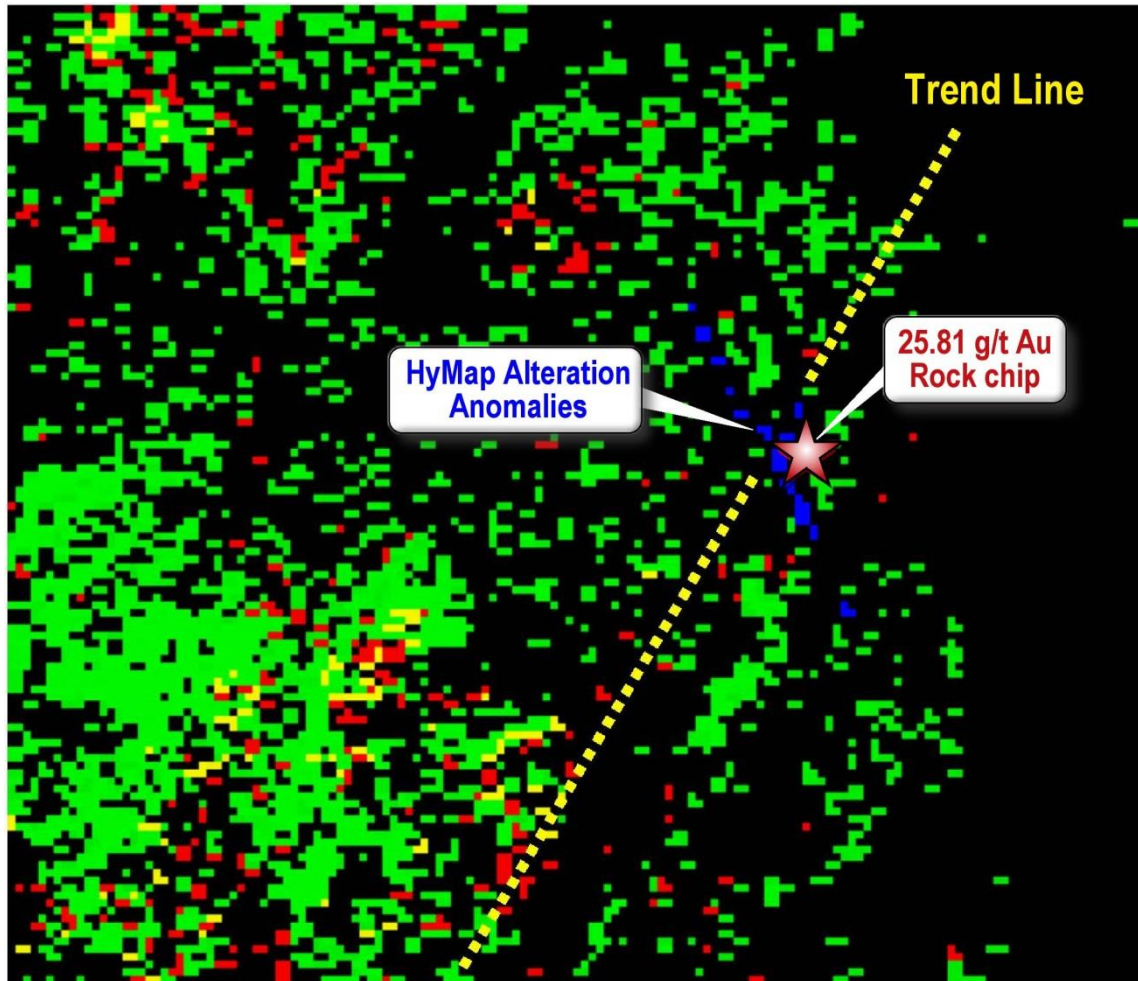
# Gindalbie Project



- **Project Holding 150km<sup>2</sup>**
- 45km north of Glandore
- Lady Lauren on Hymap anomaly ★
- PoW approved
- Heritage clearance done
- Drilling in Q4
- Visible gold found at Lady Lauren

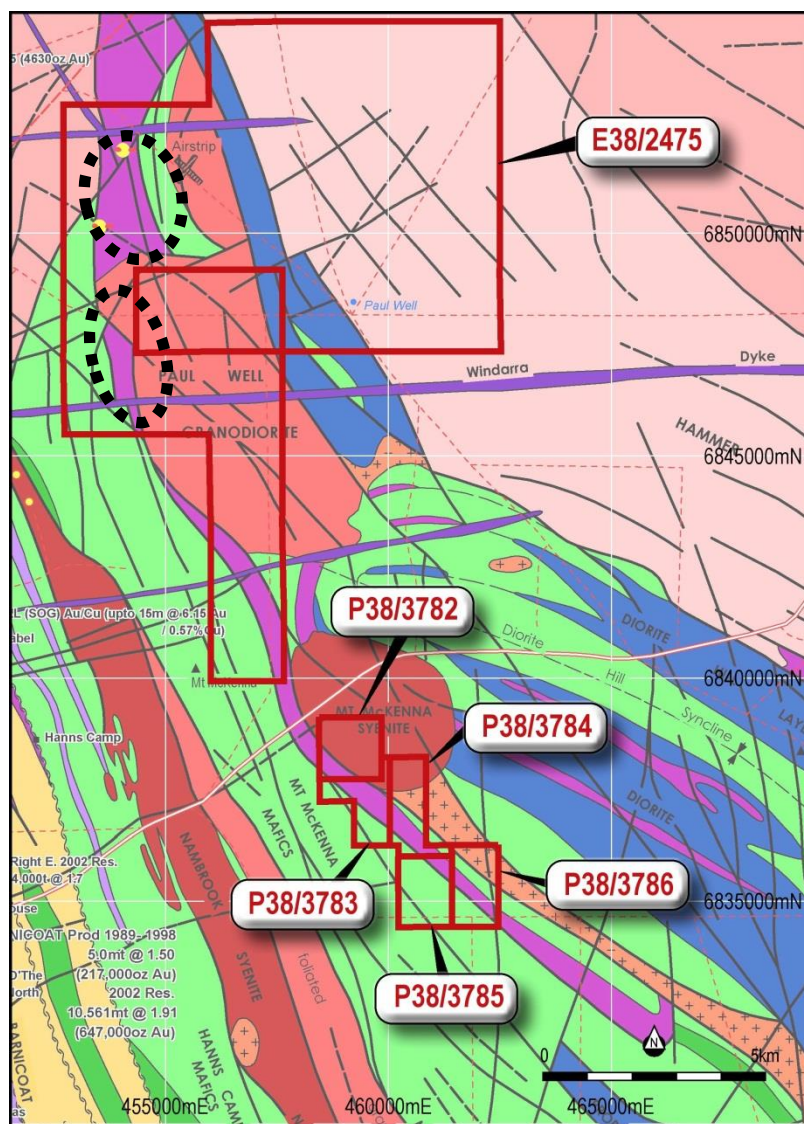


# Gindalbie Project Hymap anomaly



- Chip samples up to 25 g/t on Lady Lauren line
- Lady Lauren on Hymap anomaly ★
- Hymap anomaly is alteration
- Major SW-NE structure with NNW anomaly
- Visible gold on Lady Lauren

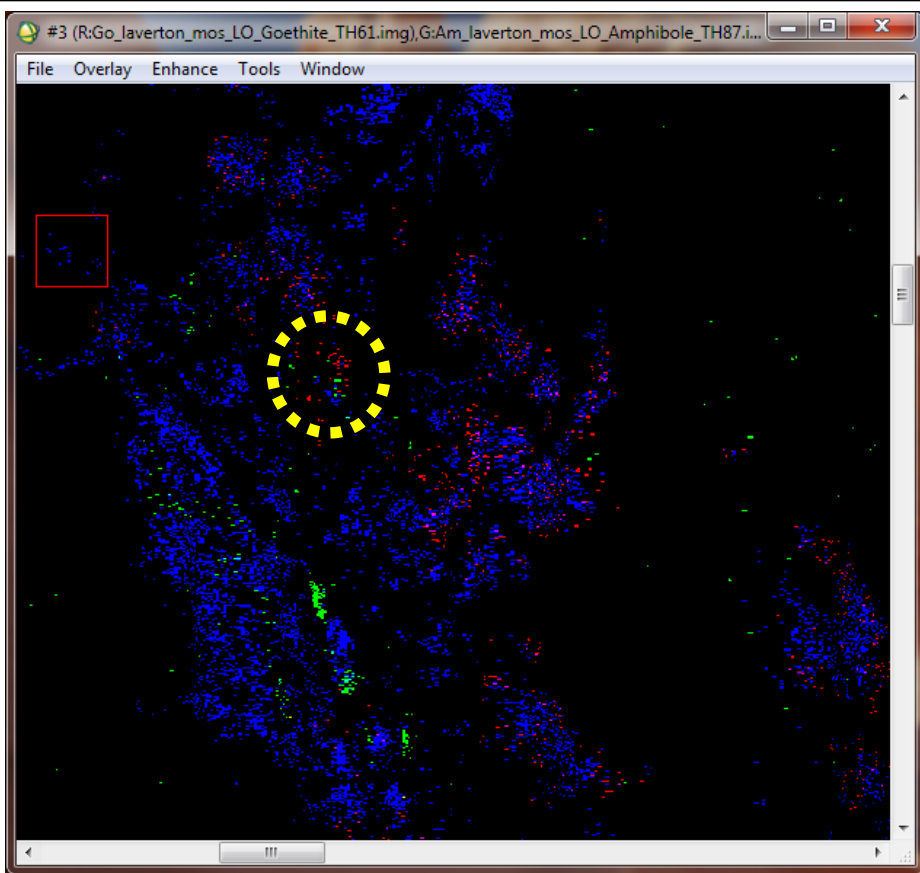
# Laverton East Project (Paul Well)



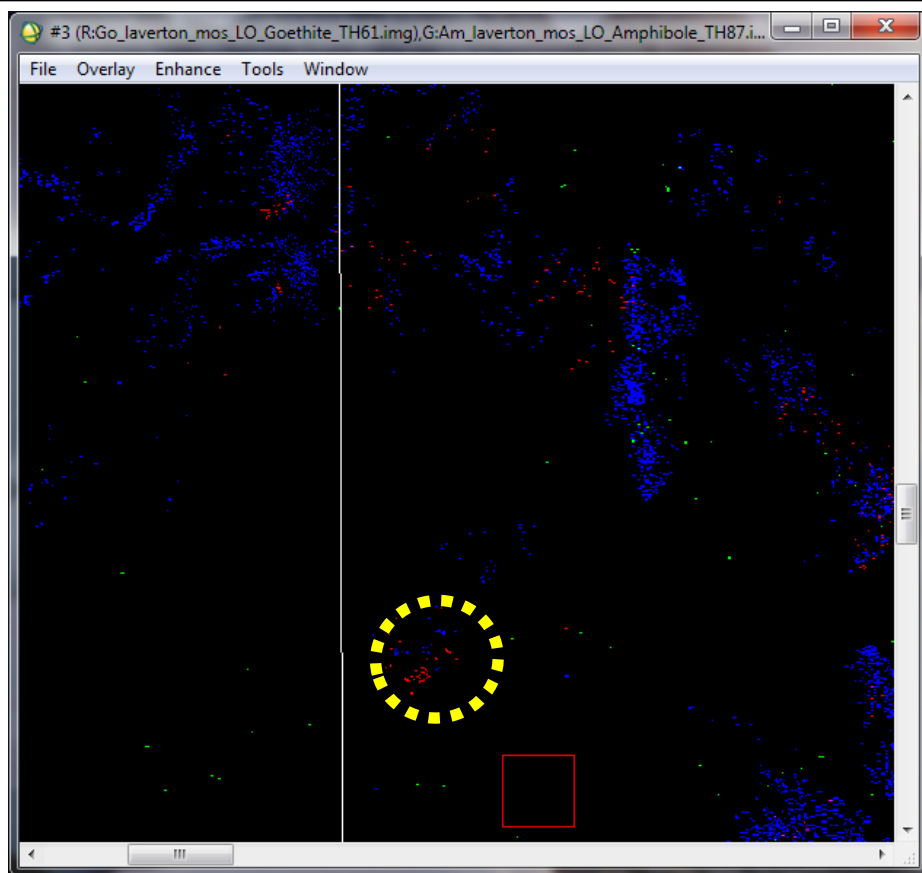
- Leases under shallow cover
- Hymap maps goethite over gold anomaly
- 2m at 4.28 g/t in LEAC 31
- Exploration focus in north lease
- HyMap targets for sampling
- Sampling completed



# Laverton East Project Hymap



▪ North Target



South Target



# Aruma's next steps

## ➤ **GLANDORE**

- Fluid Flow Study defines targets on two major structures off the Majestic Structure
- First Phase drilling on the western target areas heritage cleared and ready to drill awaiting new PoW
- Visible gold in quartz vein on structure at Steve's zone

## ➤ **JUNDEE SOUTH**

- 48m at 1.47g/t (incl. 4m at 15.37g/t) in JSR34
- Mark's Zone of 400m by 100m of >1g/t Au to be RC drilled after heritage survey
- Major Hymap anomalies coincident with structure and gold results

## ➤ **GINDALBIE**

- PoW approved and initial heritage survey completed
- Lady Lauren Hymap anomaly identified
- Drilling in Q4 on visible gold and Hymap anomaly at Lady Lauren

# ARUMA – THE INVESTMENT STORY



- 3 Advanced projects in the proven Eastern Goldfields
- All projects strategically located
- All projects have high grade gold indicators
- Adjacent to established gold producers
- 3 programs of RC planned in Q4
- Good leverage for share value increasing
- Current programs well funded

# Company snapshot



**Paul Boyatzis** – Non Executive Chairman  
Experienced in capital and equity markets

**Peter Schwann** – Managing Director  
Experienced geologist in exploration and mining

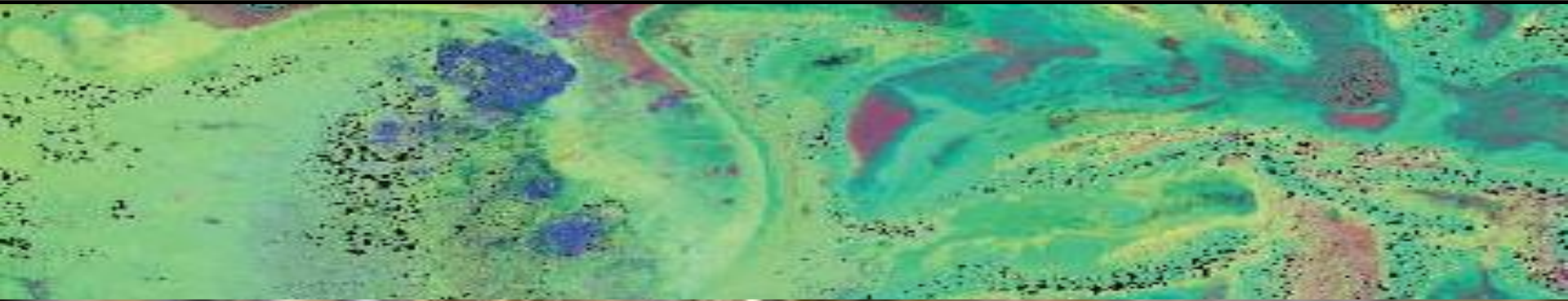
**Ki Keong Chong** – Non Executive Director  
Established Lawyer in Asian finance and investment banking

## Capital Structure

Shares on Issue	<b>99M</b>
Market Capitalisation at 5.6c	<b>\$5.5M</b>
Cash (31 March 2013)	<b>\$2.1M</b>
Shareholders	<b>439</b>
Top 20	<b>49.3%</b>
National Nominees	<b>8.7%</b>
Nexus Minerals	<b>6.3%</b>



# ARUMA RESOURCES



Thank you.