



---

## EXPLORATION UPDATE

---

### Highlights

- **Second phase RC drilling at Glandore to follow up 5m at 4.3g/t Au**
- **RC drilling to commence on Gindalbie quartz veins**
- **Heritage approval given for the RC drilling at Jundee South's Marks Prospect**

---

Active Western Australian gold explorer, **Aruma Resources Limited (ASX: AAJ)** is pleased to announce that the Gindalbie reverse circulation (RC) drilling has commenced. This drilling is following up the 25g/t rock chip sample and visible gold discovered in the Lady Lauren area.

Follow-up RC drilling at Glandore will commence after this drilling is completed. Significant anomalous gold intercepts were returned from Aruma's **Steves and Grunts Prospects** located 40km east of Kalgoorlie. The results are shown in Table 1 below.

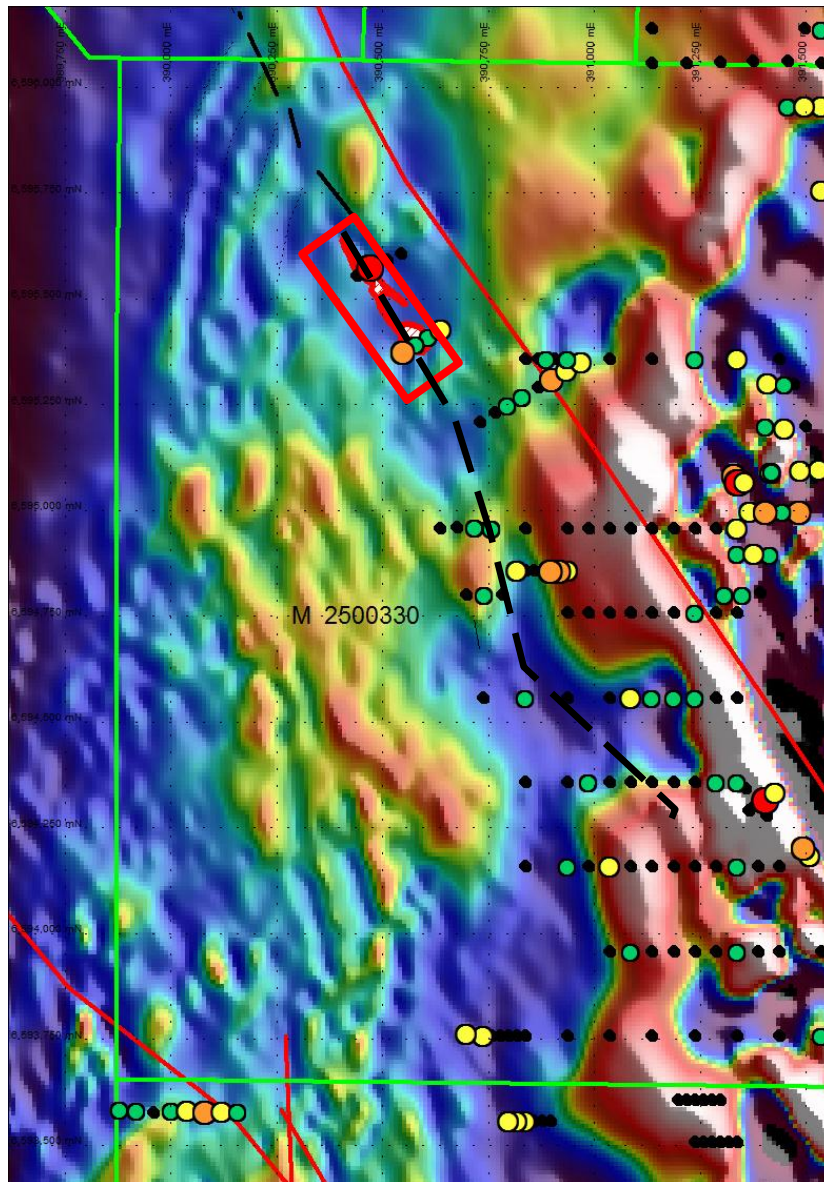
The previously announced RC sample assays (21 May 2013) included 5m at 4.3g/t Au from 60m in GRC103 and are on a quartz vein system with associated carbonate lode style alteration. This intersection was underneath a surface geochemical sample of 1.01 g/t Au.

RC	Dip	GDA94	GDA94	Depth	Depth	Au (g/t)	Intercept	Average
Drillhole	Degrees	Easting	Northing	From	To	FA 30g)	m	Au g/t
GRC080*	-60	390080	6593820	94	95	<b>1.03</b>	1	<b>1.03</b>
GRC094**	-60	390900	6595310	68	69	<b>3.25</b>	1	<b>3.25</b>
				70	71	<b>1.32</b>	1	<b>1.35</b>
GRC100**	-60	390548	6595374	22	23	<b>1.38</b>	1	<b>1.38</b>
GRC103**	-60	390472	6595573	60	61	<b>4.08</b>	5	<b>4.31</b>
				61	62	<b>5.00</b>		
				62	63	<b>7.80</b>		
				63	64	<b>3.23</b>		
				64	65	<b>1.43</b>		

**Table 1 Drill Hole intersections >1.0 g/t Au from RC Drilling**

**Hole Locations \* = Grunts, \*\* = Steves**

The initial geochemical survey defined the mineralisation which is 350m long and up to 23m thick. The highly anomalous surface sampling contained values up to 20 g/t gold and visible gold in hand specimens.



**Figure 1** Aruma Resources' Steves Prospect infill drilling location (red rectangle) on magnetics with drill results (Dots) and anomaly trendline (black dashed). (Au in holes = Red >5g/t, Orange >1g/t, Yellow >0.5g/t Au, Green >0.1g/t)

## Drilling

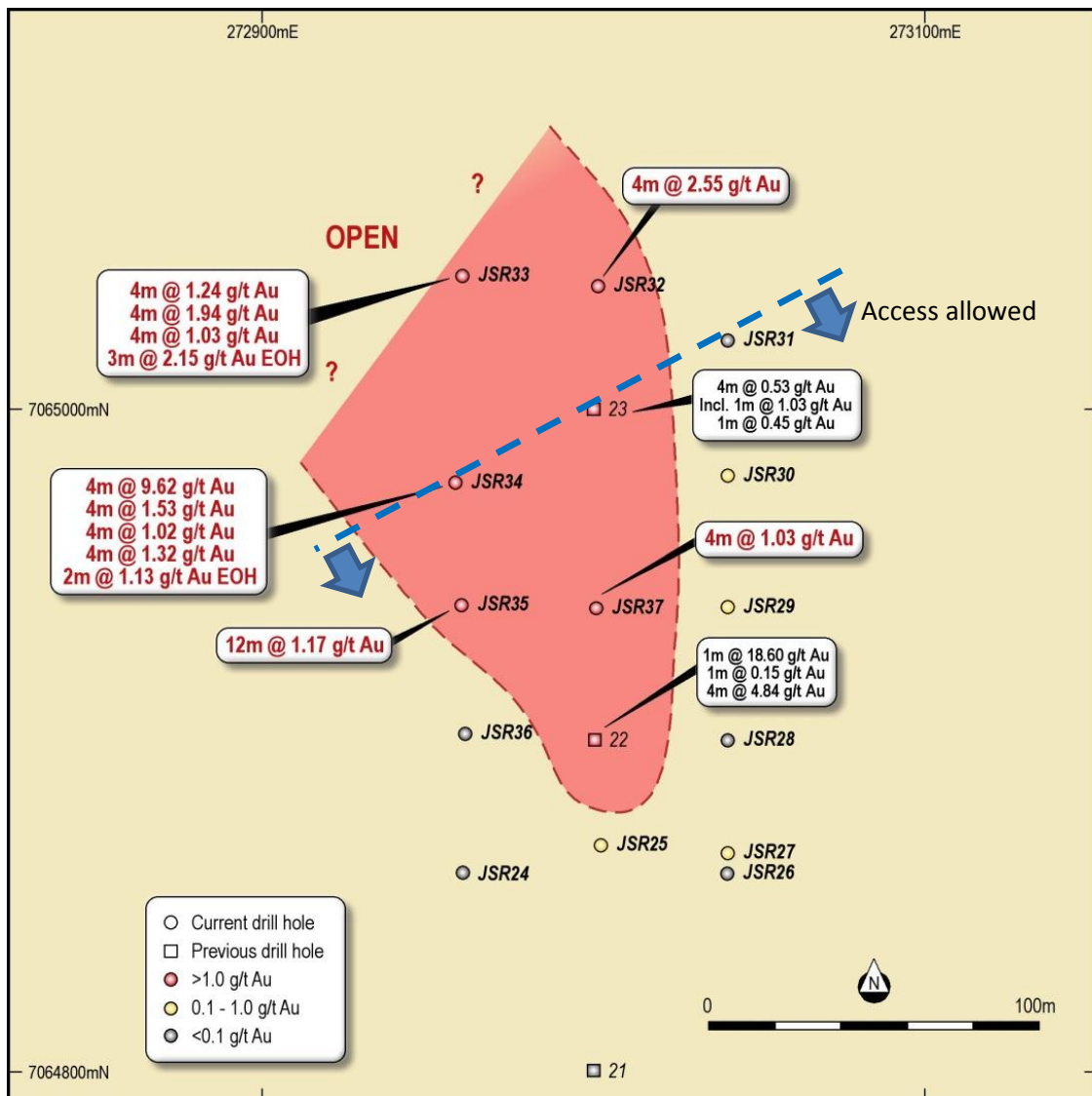
The **Glandore** RC drilling to be undertaken at **Steves** will require up to 1,200m defining the mineralisation to 100m depth over the 350m anomaly intersected in the two drill holes.

The initial drilling at **Gindalbie** is completed with the drilling of 13 RC holes for 1,000m and was commenced after site access completed in early June. The two programs will be run together to save on mobilisation and travel.

## Aruma Resources Limited

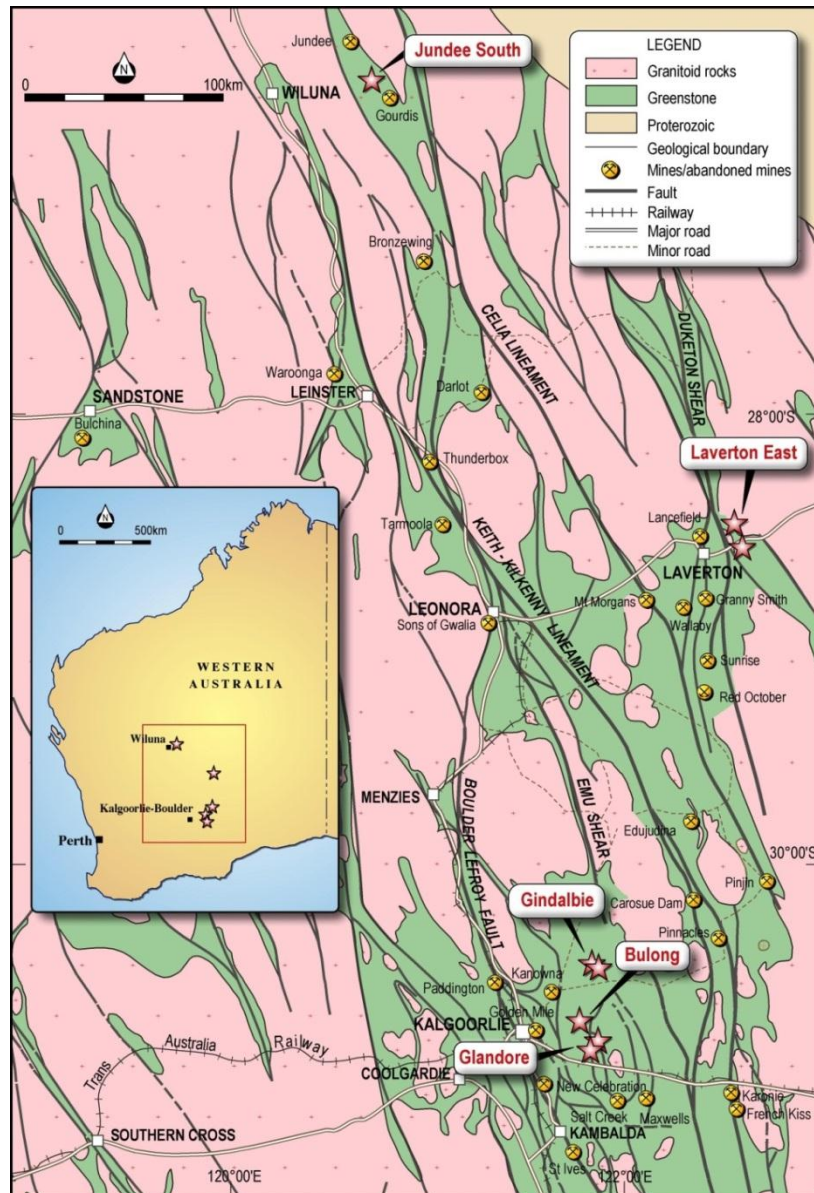
ABN 77 141 335 364 ASX: AAJ  
Suite 33, 18 Stirling Highway, Nedlands WA 6009  
Locked Bag 2000, Nedlands WA 6909, Australia  
T +61 8 6389 1799 | F +61 8 6389 0112 | W www.arumaresources.com

The **Jundee South** RC drilling will be done in the new financial year after heavy rain has made the area very boggy and the roads were closed this week. This is scheduled for up to 1,400m defining the mineralisation to between 100m to 130m depth. Heritage approval was given for the southern half of Marks Zone (see Figure 2 below), with the northern area still in negotiation.



**Figure 2** Plan of RAB drill holes in the Marks Zone showing RC target in Red.  
Access is currently restricted north of the blue dashed line.





**Figure 3 Aruma Resources' project locations in the Eastern Goldfields**

## PROJECTS PROGRESS

Figure 3 above shows Aruma's Project areas in Western Australia. Aruma is concentrating exploration on the three advanced projects at Glandore, Gindalbie and Jundee South.

All of Aruma's Projects have strong gold indicators and proven high grade potential. The ongoing work comprises:

- RC drilling at **Gindalbie** and **Glandore** which is underway
- The **Jundee South** heritage approvals granted for RC drilling
- The Company is well-funded for the coming exploration year.

## Aruma Resources Limited

ABN 77 141 335 364 ASX: AAJ  
Suite 33, 18 Stirling Highway, Nedlands WA 6009  
Locked Bag 2000, Nedlands WA 6909, Australia  
T +61 8 6389 1799 | F +61 8 6389 0112 | W www.arumaresources.com



**For further information please contact:**

Peter Schwann  
Managing Director  
Aruma Resources Limited  
Ph: +61 8 6389 1799  
Mobile: +61 417 946 370  
info@arumaresources.com

***Competent Person's Statement***

*The information in this release that relates to Exploration Results, Mineral Resources or Ore Reserves is based on information compiled by Peter Schwann who is a Fellow of the Australasian Institute of Mining and Metallurgy and Chartered Professional (Geology). Mr Schwann is a full time employee of the Company.*

*Mr Schwann has sufficient relevant experience to qualify as a Competent Person as defined in the JORC Code (2004) and consents to the inclusion of this information in the form and context in which it appears.*

---

**Aruma Resources Limited**

ABN 77 141 335 364 ASX: AAJ  
Suite 33, 18 Stirling Highway, Nedlands WA 6009  
Locked Bag 2000, Nedlands WA 6909, Australia  
T +61 8 6389 1799 | F +61 8 6389 0112 | W [www.arumaresources.com](http://www.arumaresources.com)