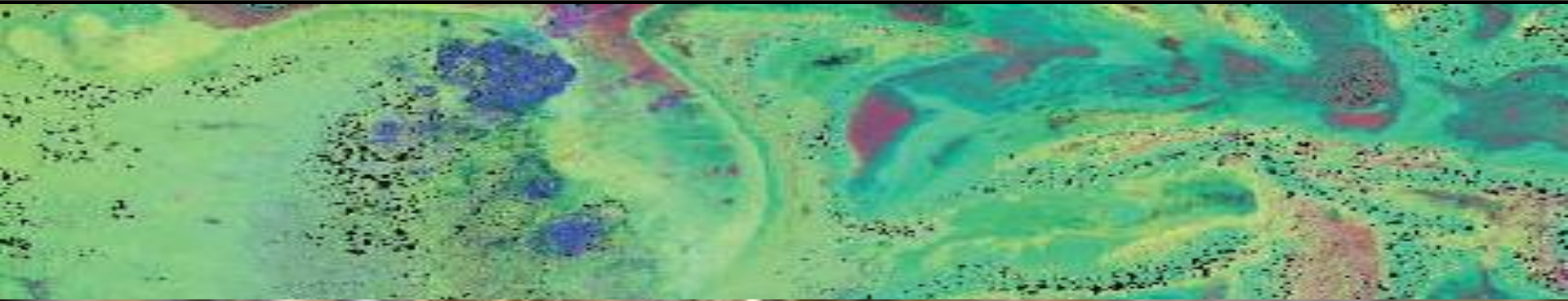




ARUMA RESOURCES



ARUMA'S GOLD TARGETS

Peter Schwann
Managing Director

Aruma Resources Limited – Presentation
February 2013

Disclaimer /Competent Person's Statement



The information in this presentation:

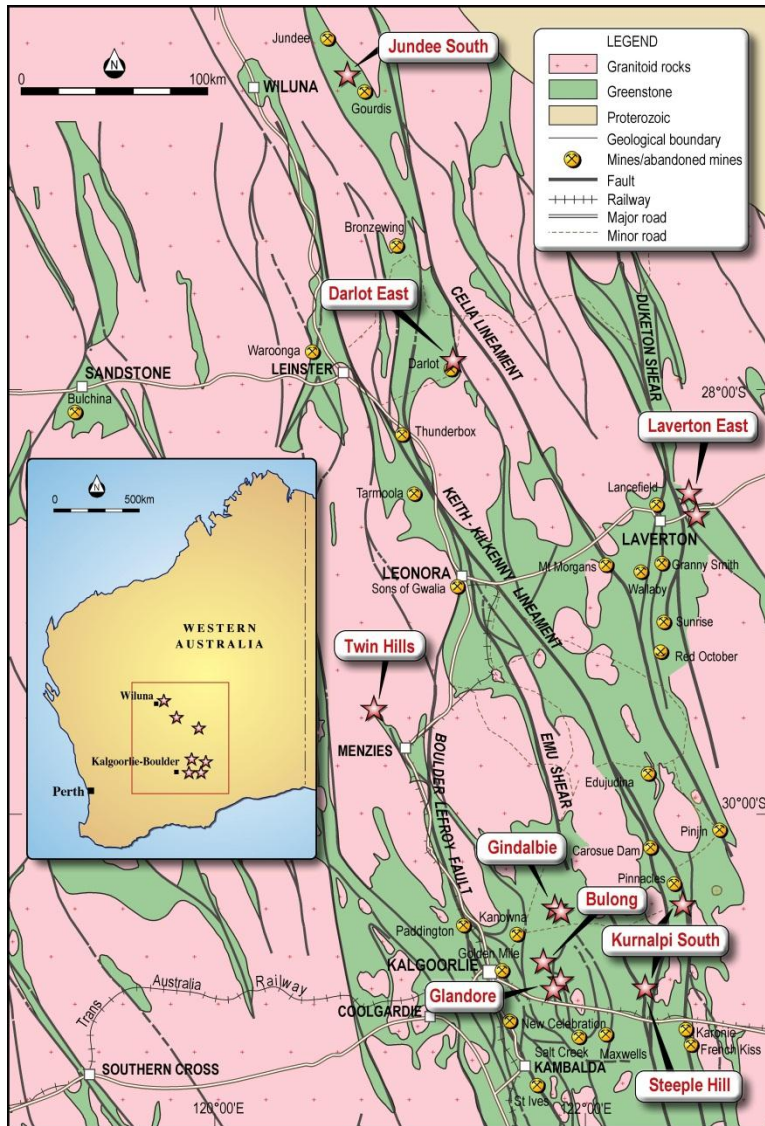
- was prepared with due care and attention and is current at the date of the presentation;
- is not an offer or recommendation to purchase or subscribe for securities in Aruma Resources Limited or to retain any securities currently held;
- does not take into account the potential and current individual investment objectives or the financial situation of investors;
- the information in this report that relates to Exploration Results, Mineral Resources or Ore Reserves is based on information compiled by Mr Peter Schwann, a full time employee of Aruma, who has sufficient experience to qualify as a Competent Person as defined in the 2004 Edition of the "Australasian Code for Reporting of Exploration Results, Mineral Resources and Ore Reserves";
- Mr Schwann consents to the inclusion in the presentation of the matters based on his information in the form and context in which it appears;
- actual results may materially vary from any forecasts (where applicable) in this presentation; and
- before making or varying any investment in securities in Aruma Resources Limited, all investors should consider the appropriateness of that investment in light of their individual investment objectives and financial situation and should seek their own independent professional advice.



BECOME A GOLD PRODUCER BY

- EXPLORING KNOWN HIGH GRADE GOLD AREAS IN W.A.
- IDENTIFYING NEW MINERALISATION ZONES
- USING NEW TECHNOLOGY ON
 - previously explored areas with known gold mineralisation
 - covered extensions of known gold mineralisation
 - new areas of mineralisation remotely and cheaply
- ACTIVELY MANAGING ITS LANDHOLDING
 - by exploration, applications, options and relinquishing

Project Locations

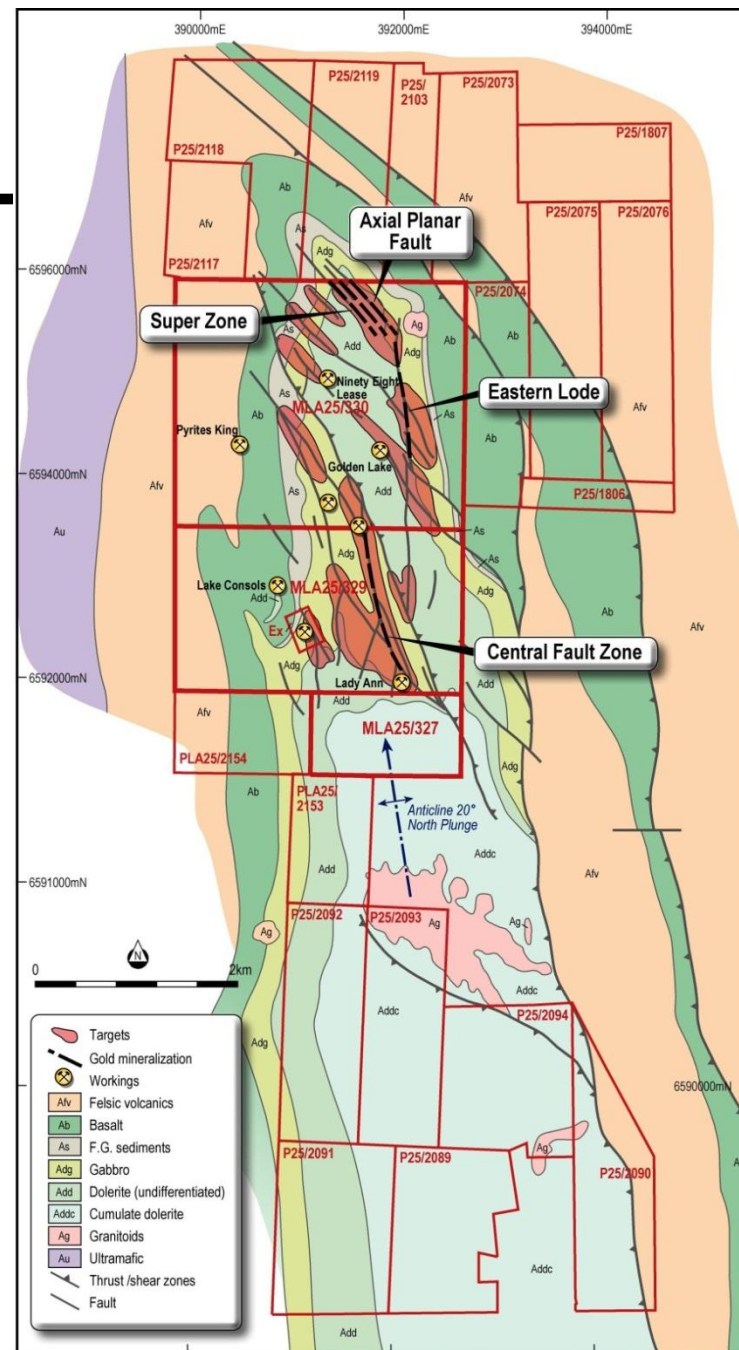


- **Glandore Project**
 - On Structure from Salt Creek-Majestic
 - High Grade large mineralising system
 - RC Drilling on visible gold at Steves
- **Gindalbie Project**
 - Targets from Hyvista and sampling
 - RC Drilling on visible gold at Lady Lauren
- **Jundee South Project**
 - 25km south of Jundee Mine
 - RAB intersections define 400X100m target
 - RC Drilling underway at Marks
- **Laverton East**
 - Northern Lease has two HyMap targets
 - Geochemical sampling done on targets

Glandore Gold Project



- Strong gold system
- On major structures
- 4 Fluid Flow Targets
- All approvals granted
- RC Drilling Q3
- Drilling on visible gold
- 40km from Kalgoorlie
- Land area >57km²

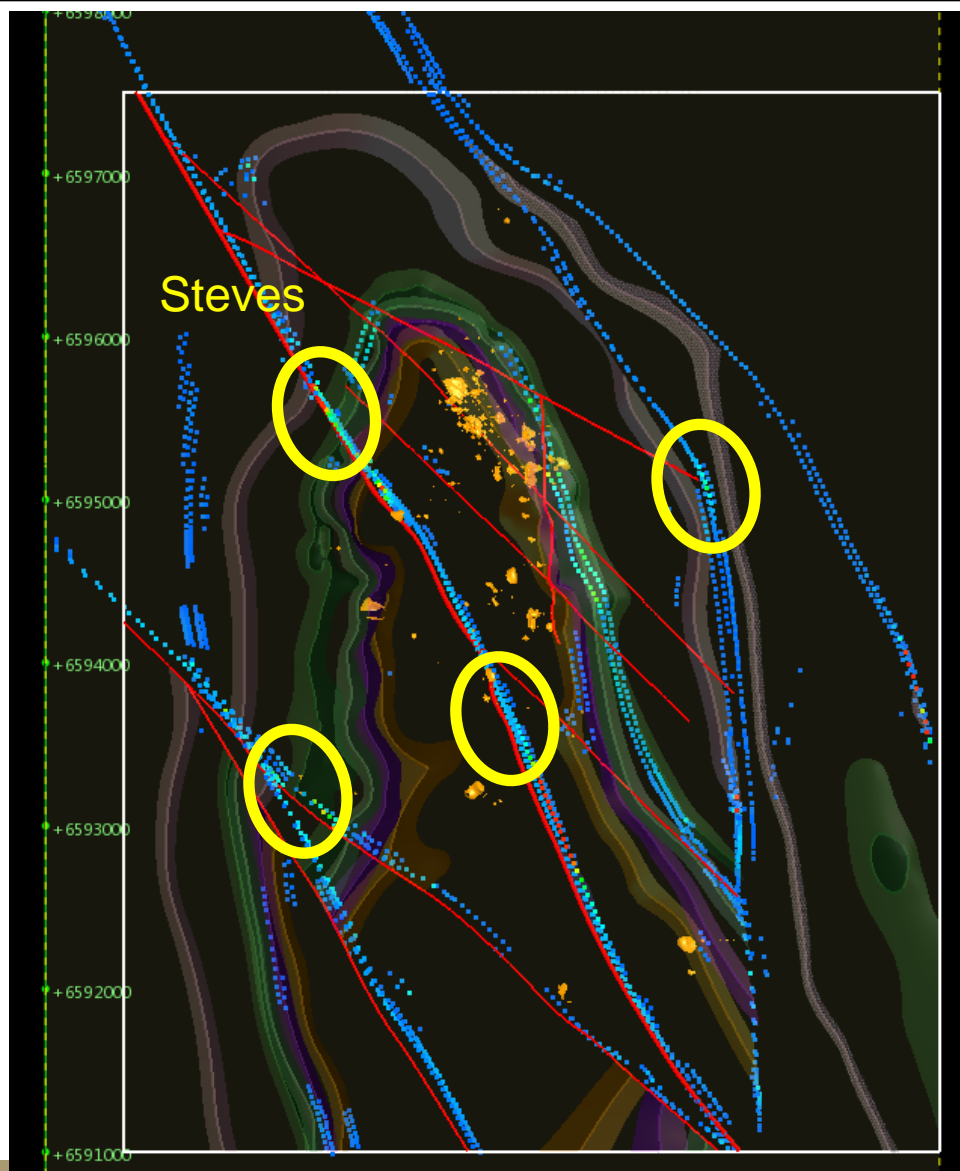




Why we are here – Thickness & Grade

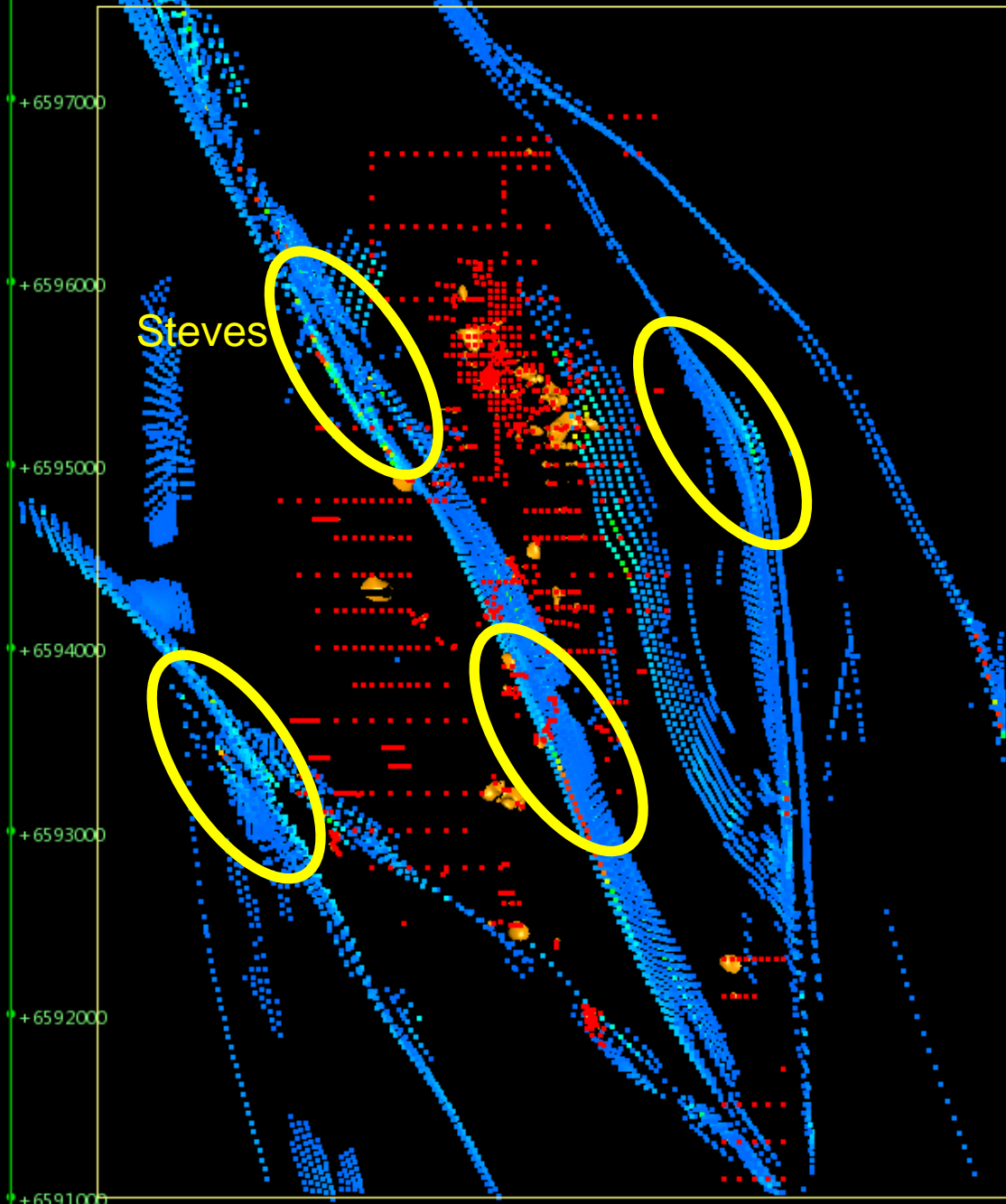
Location	Intersection	From
Axial Planar Fault**	10m at 10.27 g/t Au	58m
	4m at 18.8 g/t Au	103m
Supergene Zone** (**Both these zones at the northern edge of Initial Leases)	8m at 10.4 g/t Au	18m
	9m at 8.37 g/t Au	17m
	9m at 3.43 g/t Au	15m
	2m at 43 g/t Au	38m
	5m at 4.99 g/t Au	36m
Central Fault Zone Aruma Drilling	9m at 4.22g/t Au	13m
	7m at 2.48g/t Au	23m
	11m at 2.32g/t Au	surface
	2m at 4.77g/t Au	18m

Glandore drilling targets from Fluid Flow



- Fluid Flow Study Completed
- Major Structures in Blue
- Yellow Ellipses are gold targets
- PoW approved for western targets
- Drilling Booked Q3
- Visible gold found at Steves Target

TARGETS

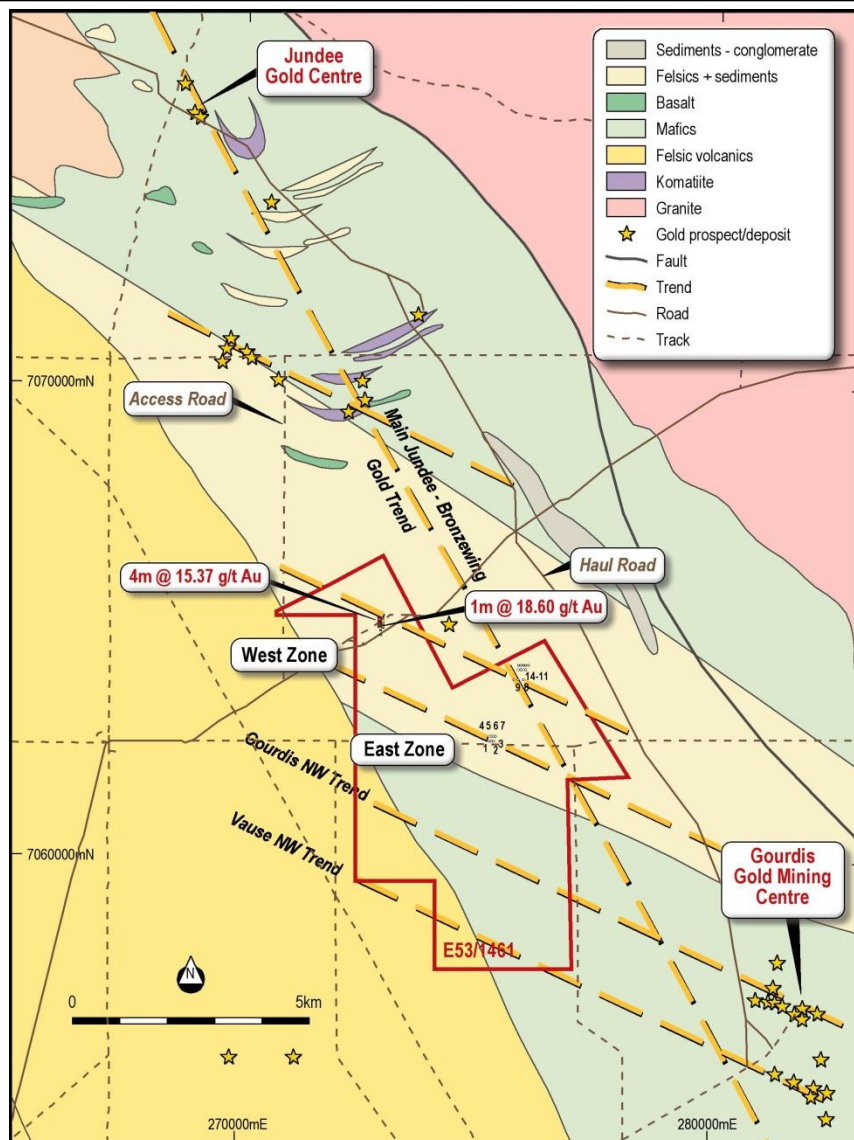


- This is from a Fly through
- Points to note are
- drilling density and
- size of targets

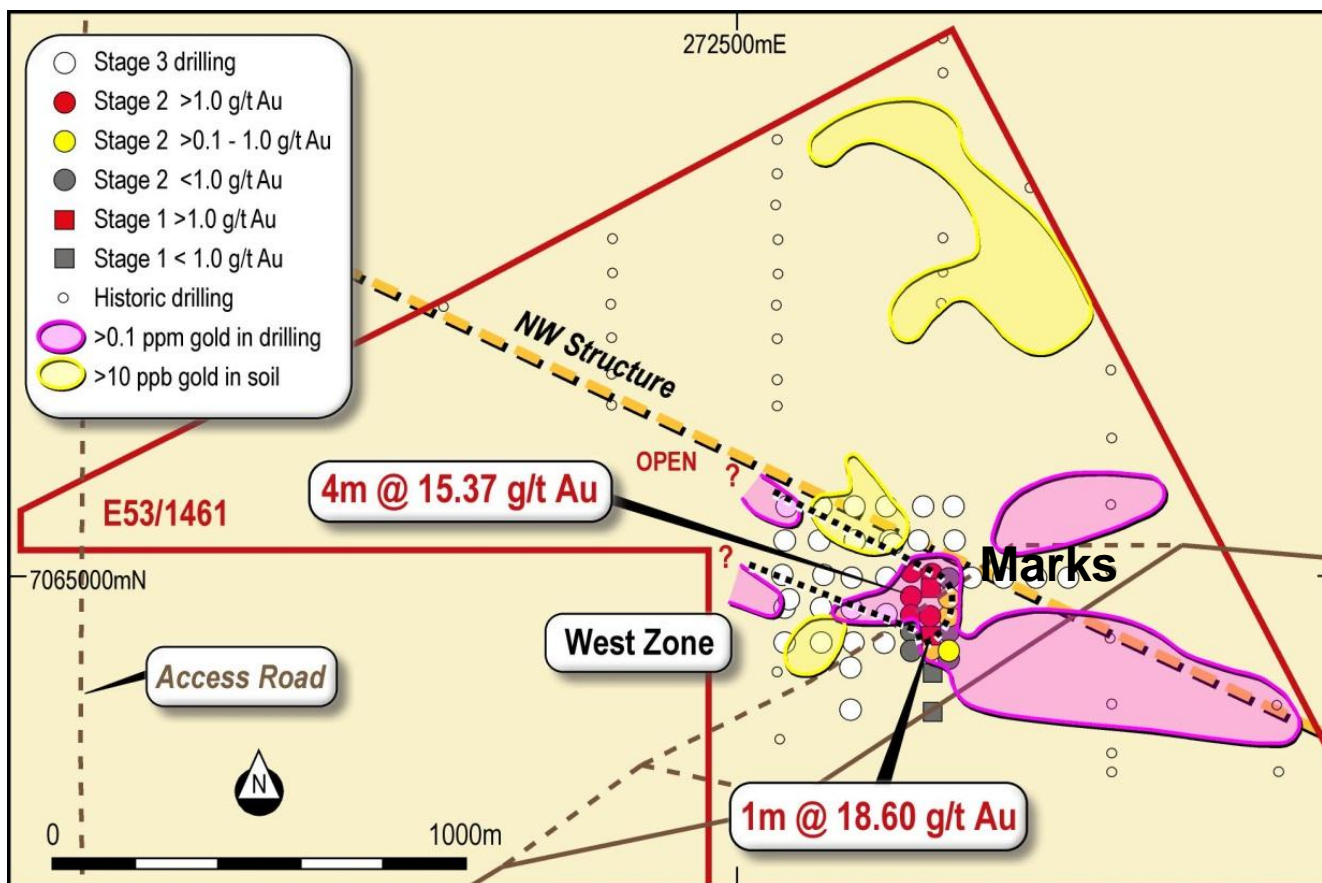
Jundee South Project



- Located 60km from Wiluna
- 2.5km from Jundee Haul Rd
- 25km from Jundee Mine
- 4 major Lineaments
- Hymap anomaly on discovery
- 1000m RC drilling at Marks

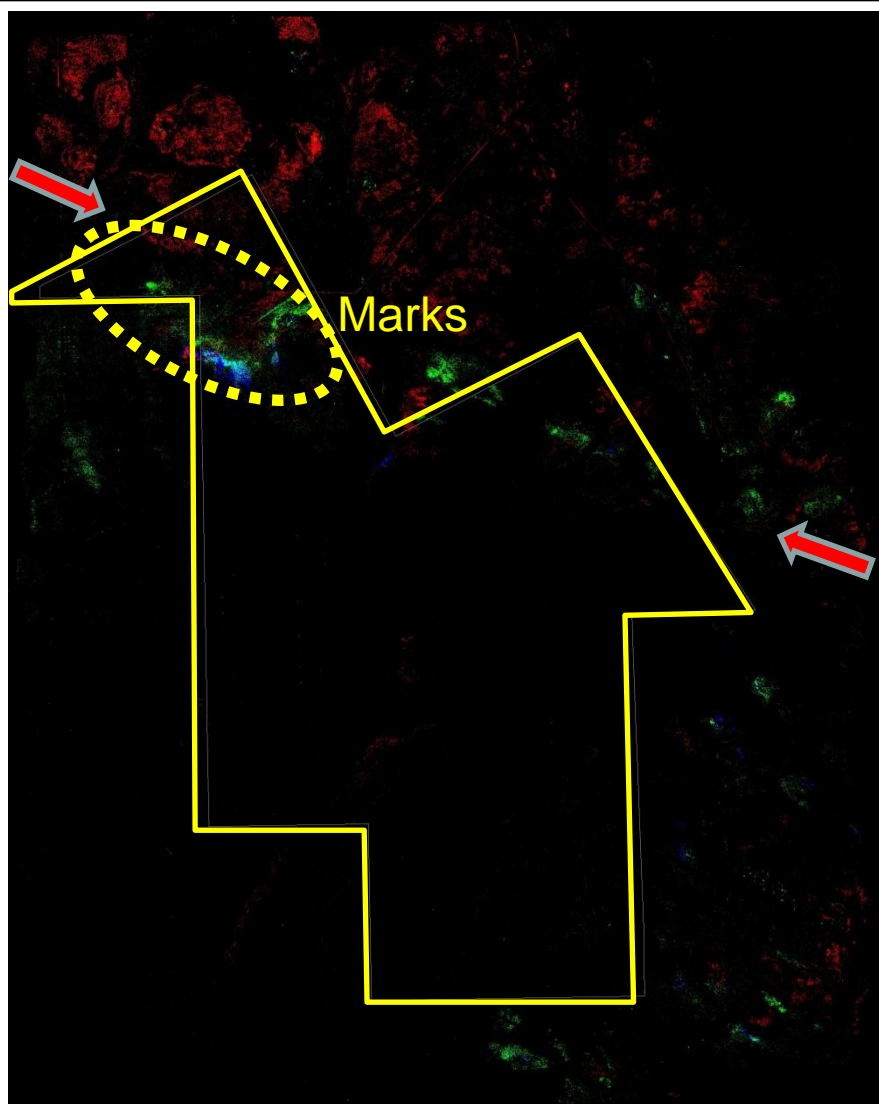


Jundee South Western Area



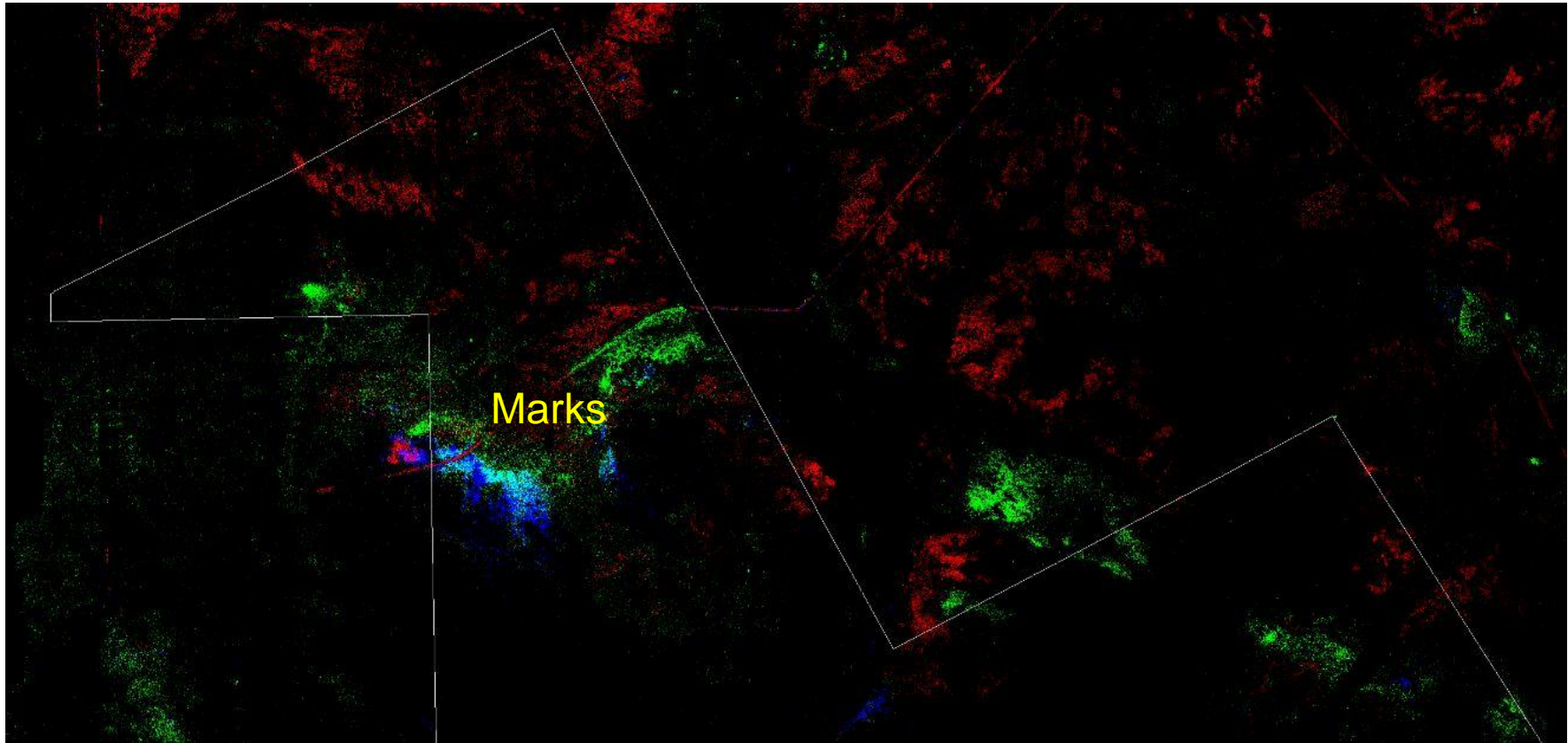
- JSR34 has >48m at 1.47g/t Au, JSR34 has 4m at 15.37g/t Au
- 4th phase drilling on 400m by 100m target (Marks)

Jundee South Hymap



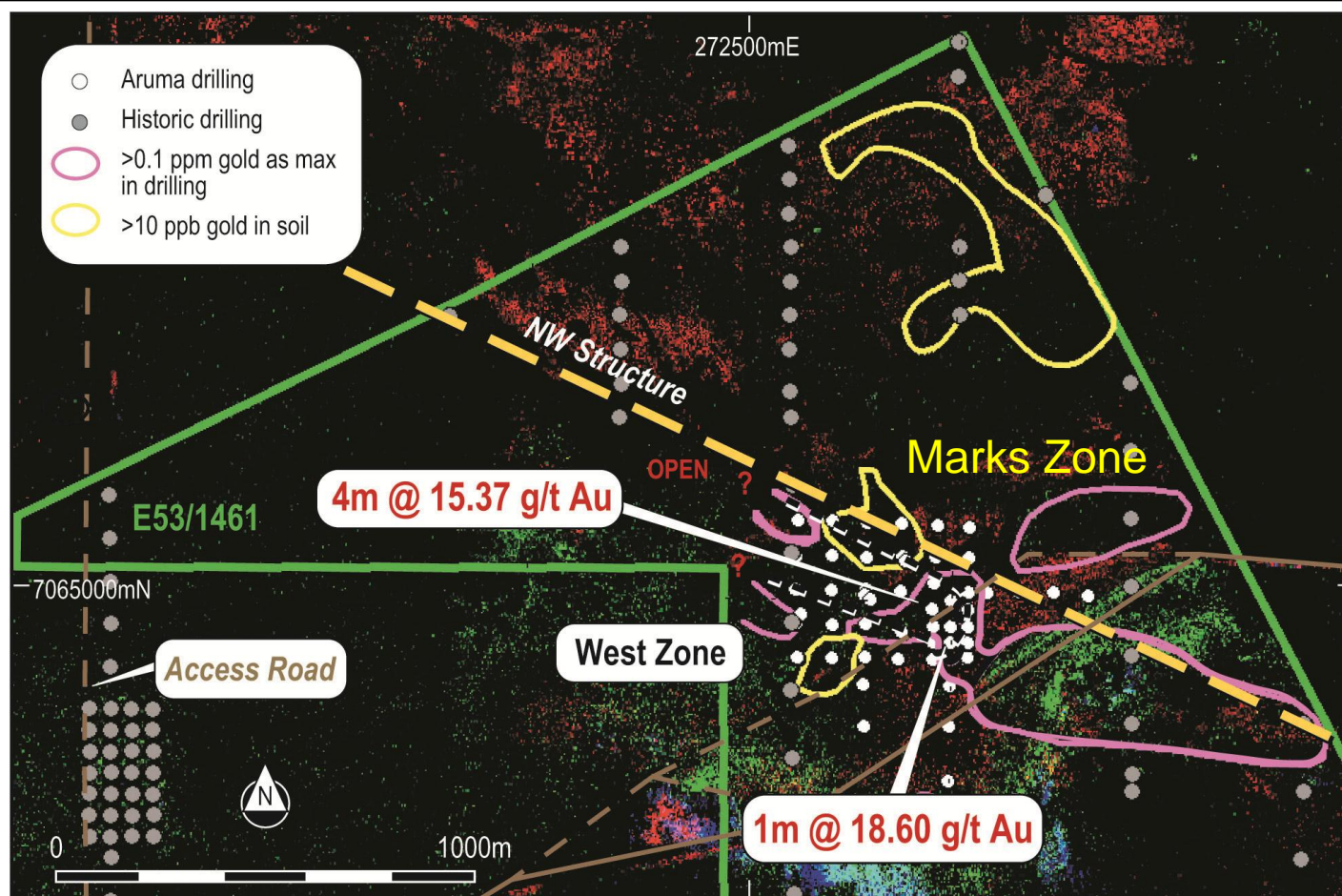
- Lease in yellow
- Drilling in yellow ellipse
- Hymap
 - Goethite red
 - Mica green
 - Chlorite product blue
- Structure clearly shown
- More targets along structure

Structure and Alteration Minerals



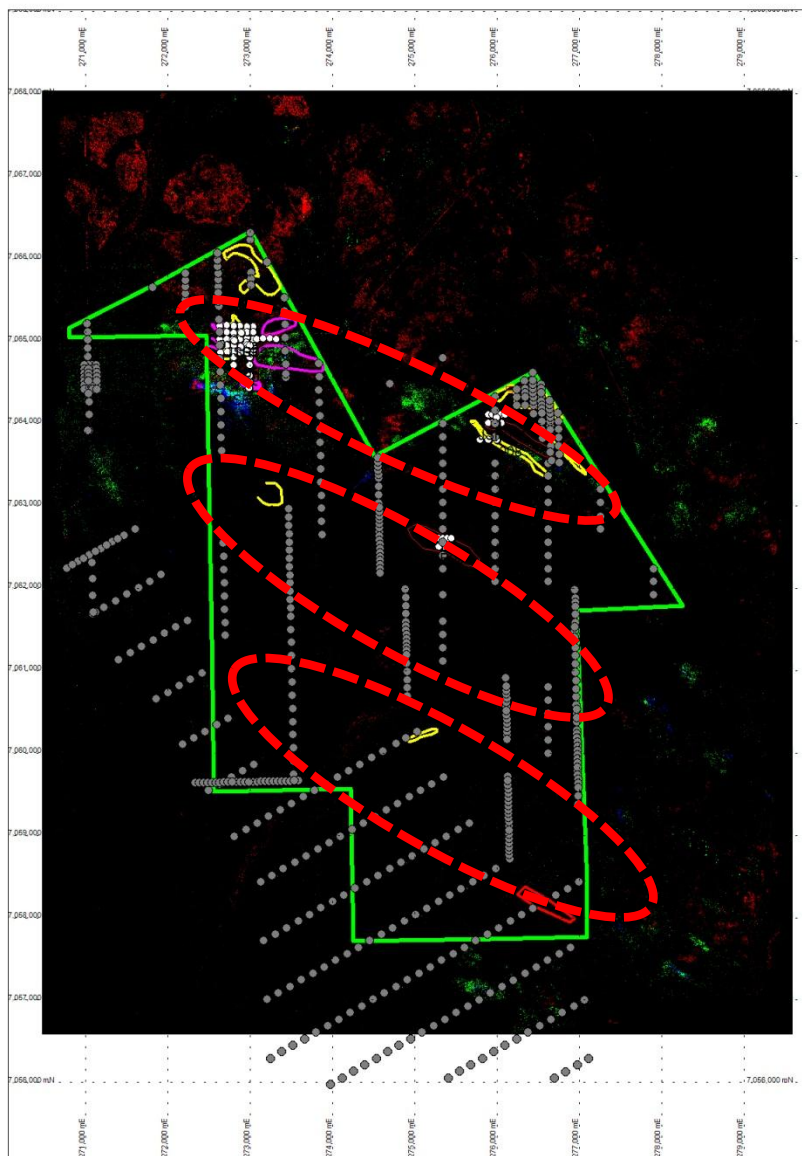
- Same minerals as previous slide
- Red = Go, Green = Chlorite and Blue = Phengite


Structure, Alteration and Geochemistry



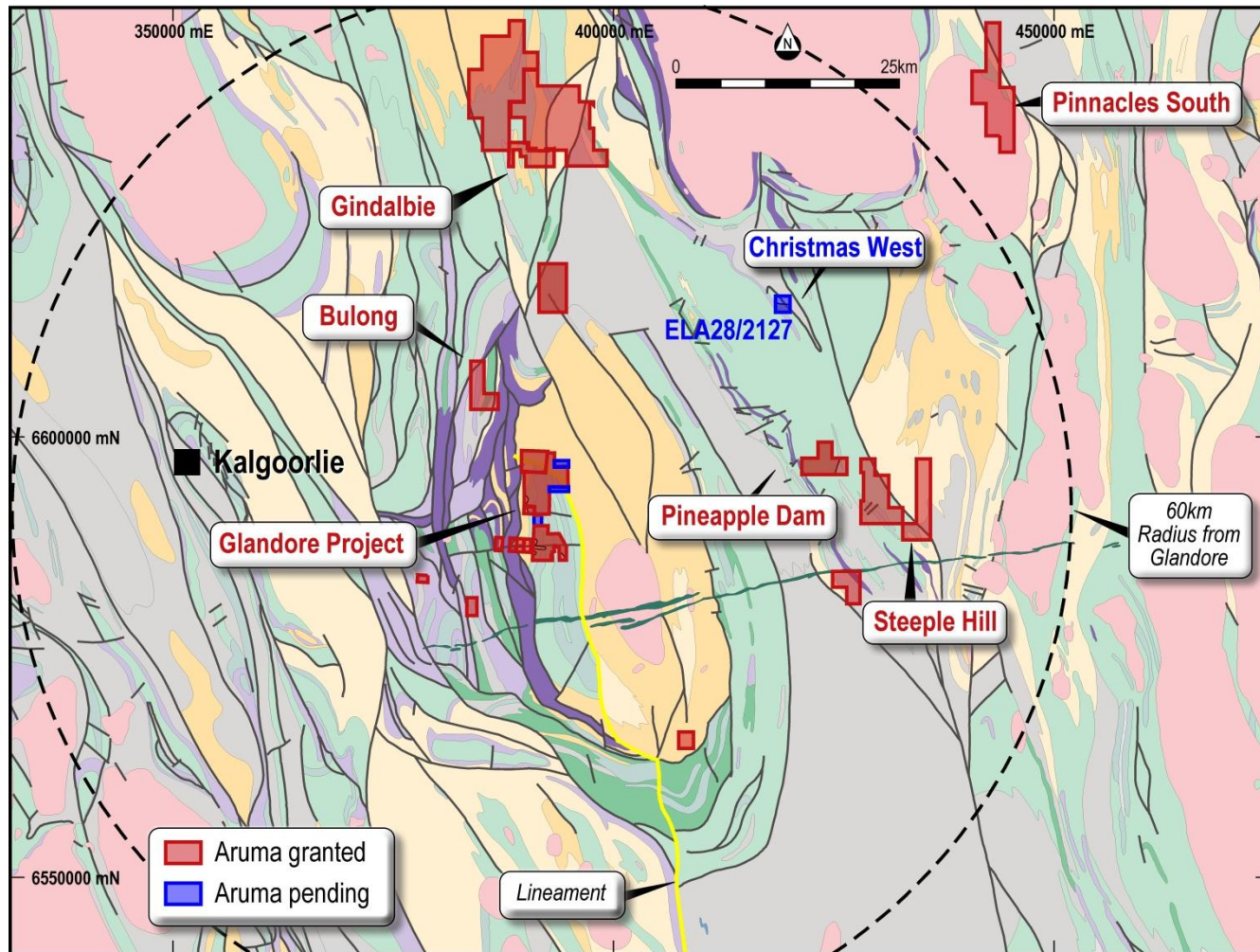
- Hymap, Chemistry and drilling is successful

Looking Elsewhere on the Lease



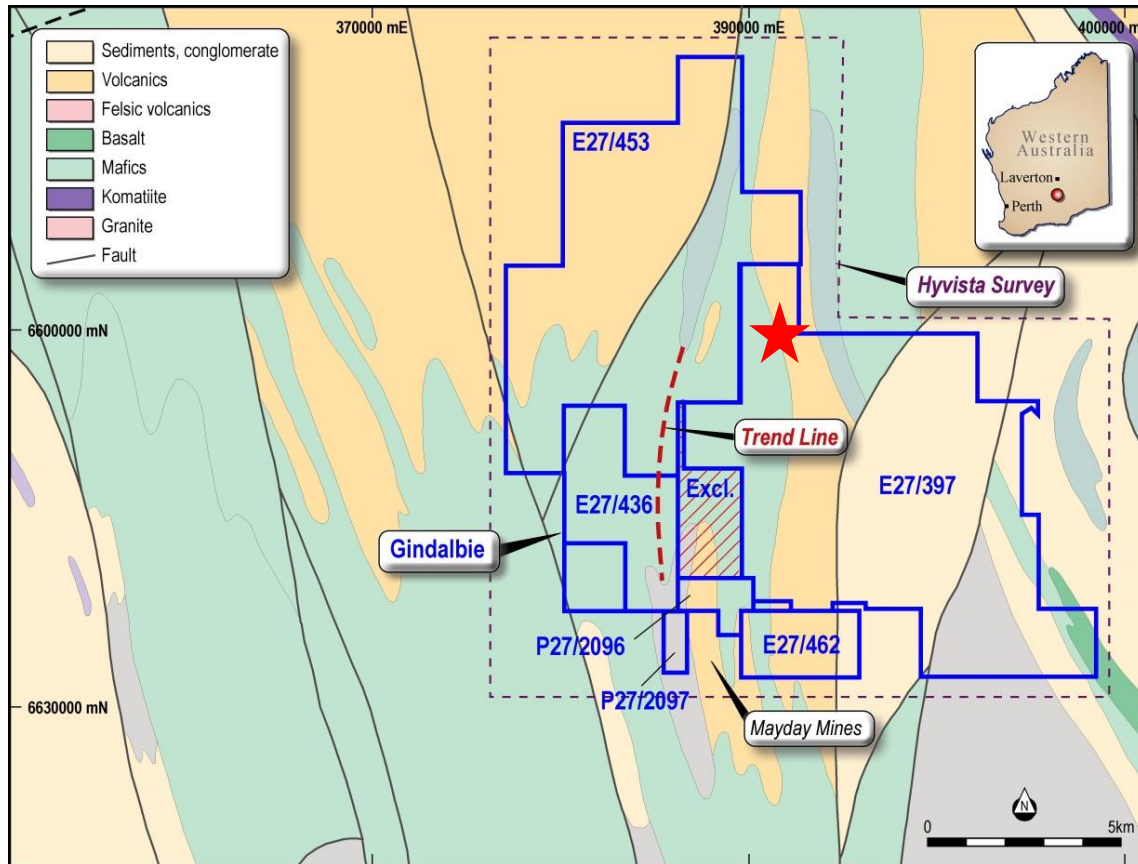
- Anomalies Identified
- Previous work wide spaced
- New targets suggested
- Geochem and Hymap work
- Gaps are on structures 
- Possible stand alone operation

Glandore Hub Leases



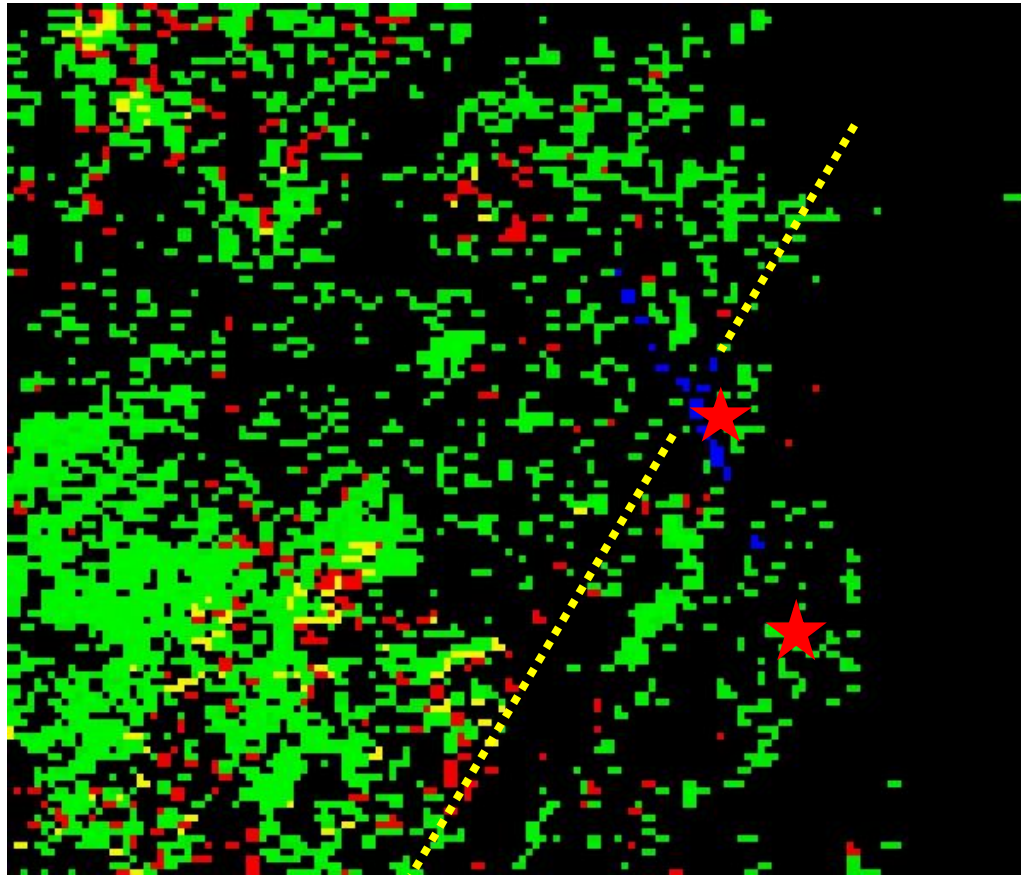
Leases in a 60km radius of Glandore

Gindalbie Project



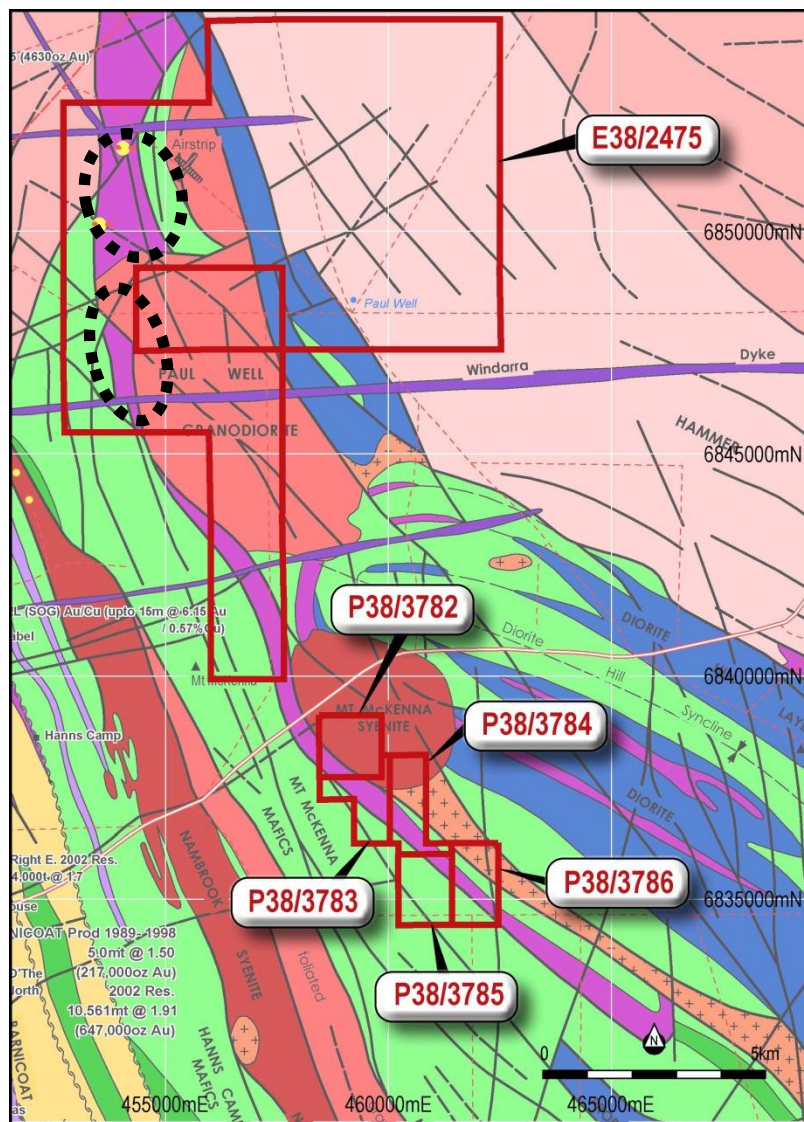
- **Project Holding 150km²**
- 45km north of Glandore
- Lady Lauren on Hymap anomaly ★
- PoW approved
- Heritage clearance done
- Drilling in Q3
- Visible gold found at Lady Lauren

Gindalbie Project Hyvista Anomaly



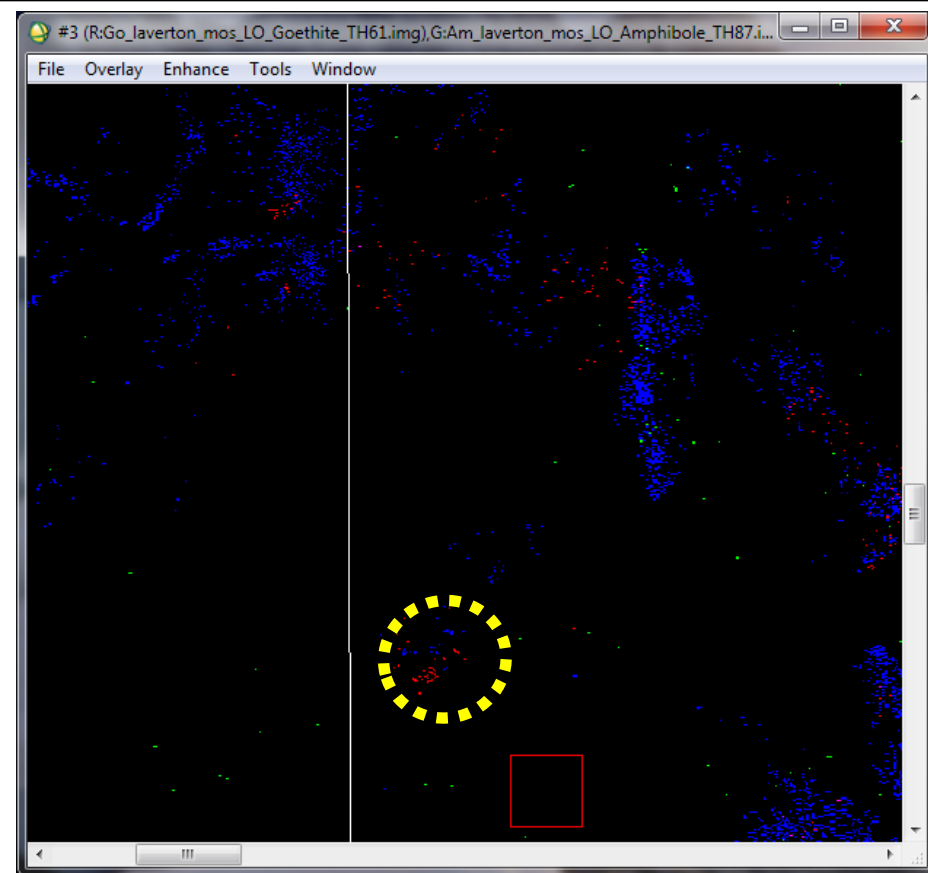
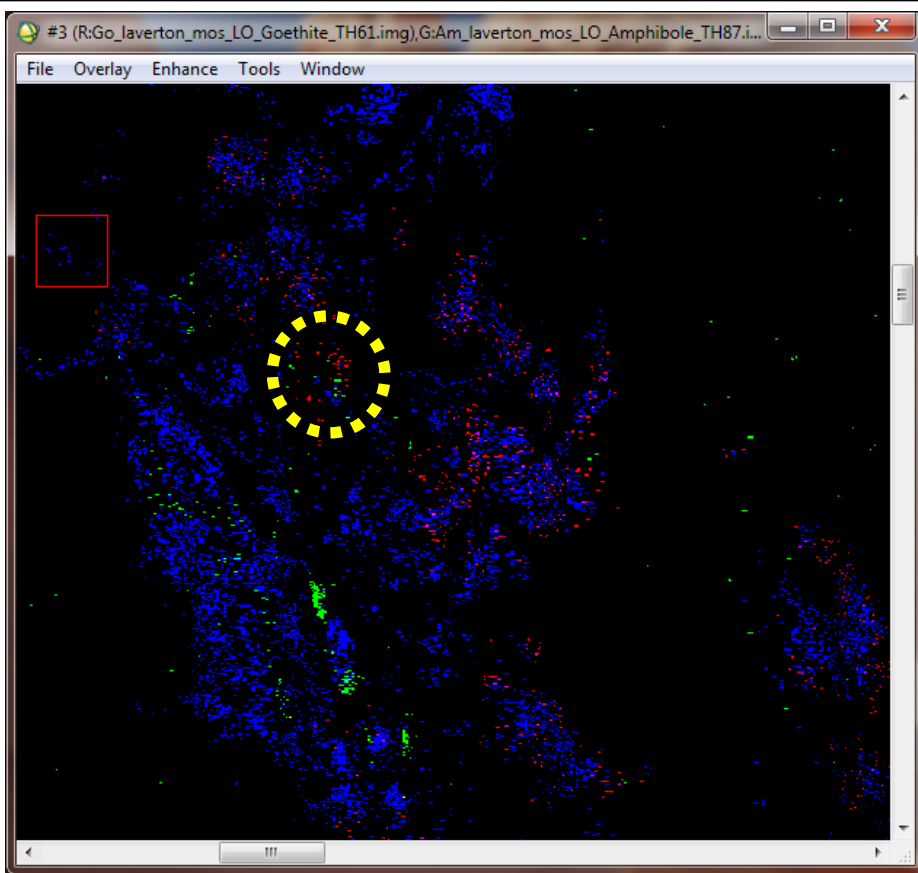
- Chip samples up to 25 g/t on Lady Lauren line ★
- Lady Lauren on Hymap Anomaly
- Hymap anomaly is alteration
- Major SW-NE Structure with NNW anomaly
- Visible Gold on Lady Lauren

Laverton East Project (Paul Well)



- EL Granted
- Leases under shallow cover
- Hymap maps goethite over Gold anomaly
- 2m at 4.28 g/t in LEAC 31
- Exploration focus in North Lease
- Hyvista Targets for sampling
- Sampling Completed

Laverton East Project Hyvista



- North Target
- South Target
- Hymap Targets sampled in Q3

Aruma's Next Steps



➤ GLANDORE

- Fluid Flow Study defines targets on two major structures off the Majestic Structure
- First Phase drilling on the western target areas Heritage cleared and ready to drill
- Visible Gold in quartz vein on structure at Steve's Zone

➤ JUNDEE SOUTH

- 48m at 1.47g/t (incl. 4m at 15.37g/t) in JSR34
- Mark's Zone of 400m by 100m of >1g/t Au being RC drilled
- Major Hymap anomalies coincident with structure and Gold

➤ GINDALBIE

- PoW approved and initial heritage survey completed
- Lady Lauren Hymap Anomaly identified
- Drilling in New Year on Visible Gold and Hymap at Lady Lauren

➤ LAVERTON EAST

- Rock Chip sampling over Hymap anomalies

ARUMA – THE INVESTMENT STORY



- 3 Advanced Projects in the proven Eastern Goldfields
- All Projects strategically located
- All projects have high grade gold indicators
- Adjacent to established gold producers
- 3 programs of RC planned in Q3
- Good leverage for share value increasing
- Current programs funded

Company Snapshot



Paul Boyatzis – Non Executive Chairman
Experienced in capital and equity markets

Peter Schwann – Managing Director
Experienced geologist in exploration and mining

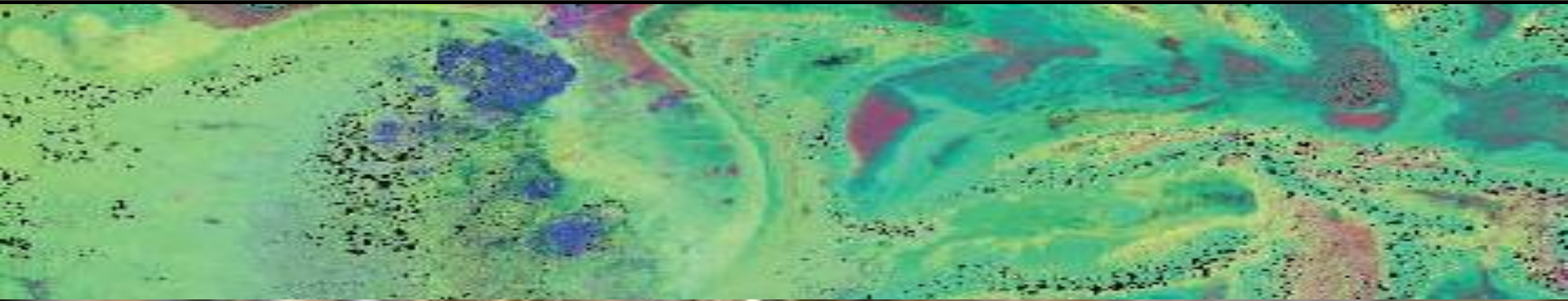
Ki Keong Chong – Non Executive Director
Established Lawyer in Asian Finance and Investment Banking

Capital Structure

Shares on Issue	79.3M
Market Capitalisation at 6c	\$4.8M
Cash (31 December 2012)	\$1.55M
Shareholders	439
Top 20	49.3%
National Nominees	8.7%
Nexus Minerals	6.3%



ARUMA RESOURCES



Thank you.