



EXPLORATION UPDATE

Highlights

- RC drilling at Glandore extends Steves Prospect mineralisation north
- New intersections include 2m @ 3.5g/t Au and 2m @ 2.55g/t Au
- RC drilling at Gindalbie hits widespread mineralisation
- R&D refund of \$310,000 after costs gives cash position of \$3.2M (30 June)

Active Western Australian gold explorer, **Aruma Resources Limited (ASX: AAJ)** is pleased to announce that the reverse circulation (RC) drilling at Gindalbie and Glandore has been completed. Total metres drilled were 1,020 in 12 holes at Gindalbie and 1,560m in 17 holes at Glandore.

Results at Glandore

The initial geochemical survey at Steves defined the mineralisation as 350m long and up to 23m thick. The highly anomalous surface sampling contained values up to 20 g/t gold and visible gold in hand specimens.

The initial RC drilling at Glandore was done to follow up the 5m at 4.3g/t in GRC103 at **Steves Prospect**. With all holes now assayed, the values of the intersections are shown below. The previously announced RC sample assays (21 May 2013) included 5m at 4.3g/t Au from 60m in GRC103 are in Table 1 below. These are on a quartz vein system with associated carbonate lode style alteration. This intersection was underneath a surface geochemical sample of 1.01 g/t Au. The intersections in GRC100 are under the initial surface assays including 4.54 and 20.4 g/t from chip samples.

RC	Dip/Az	GDA94	GDA94	Depth	Depth	Au (g/t)	Intercept	Average
Drillhole	Degrees	Easting	Northing	From	To	FA 30g	m	Au g/t
GRC094	-60/270	390900	6595310	68	69	3.25	1	3.25
				70	71	1.32	1	1.35
GRC100	-60/60	390548	6595374	22	23	1.38	1	1.38
GRC103	-60/240	390472	6595573	60	61	4.08	5	4.31
				61	62	5.00		
				62	63	7.80		
				63	64	3.23		
				64	65	1.43		

Table 1 Initial Drill Hole intersections >1.0 g/t Au from RC drilling



The recent intersections are to the north and south of the previous intersections, and the mineralisation can be traced over 450m and is open to the north and south.

RC	Dip/Az	GDA94	GDA94	Depth	Depth	Au (g/t)	Intercept	Average
Drillhole	Degrees	Easting	Northing	From	To	FA 30g	m	Au g/t
GRC105	-60/220	390432	6595641	62	63	4.13*	2	3.60
				63	65	3.07		
GRC106	-60/240	390457	6595602	64	65	2.83	2	2.55
				65	66	2.28		
GRC117	-60/270	390648	6595328	19	20	1.44*	2	1.21
				20	21	0.98		
GRC119	-60/270	390661	6595201	16	17	2.83	1	2.55

**Table 2 New drill hole intersections >1.0 g/t Au from RC drilling at Steves
NB * value is average of repeats**

The mineralisation in the new holes continues the mineralisation to the north and south and it is still open in both directions. Although the "economic intersections" (>1 g/t Au) are not thick, the "mineralised zones" (>0.1g/t Au) are between 4 and 10m thick, with an average of over 7m and is listed below in Table 3.

RC	Dip/Az	GDA94	GDA94	Depth	Depth	Au (g/t)	Intercept
Drillhole	Degrees	Easting	Northing	From	To	FA 30g	m
GRC094	-60/270	390900	6595310	68	72	1.35	4
GRC100	-60/60	390548	6595374	22	28	0.50	6
GRC103	-60/240	390472	6595573	59	69	2.31	10
GRC105	-60/220	390432	6595641	57	66	1.01	9
GRC106	-60/240	390457	6595602	63	73	0.82	10
GRC117	-60/270	390648	6595328	17	24	0.56	7
GRC119	-60/270	390661	6595201	14	21	0.45	7

Table 3 Significant mineralised intersections that include >1.0 g/t Au at Steves.

The above mineralisation is mainly in the Western Steves area, with GRC94 being located 350m east of the main line. The next quarter will see a complete appraisal of the total lease package at Glandore, with emphasis on the data from the last 6 months of drilling and associated studies. By using the PIMA results, Fluid Flow Modelling data and the HyMap information a better understanding of the Glandore project and surrounding leases will be gained.

The definition of several lines of mineralisation at Steves is now apparent, and with the Grunts line still to be followed up, the potential of the Glandore leases keeps increasing. The figure below shows the Fluid Flow trends as unbroken red lines with the drill defined mineralisation trends as the dashed red lines.

Aruma Resources Limited

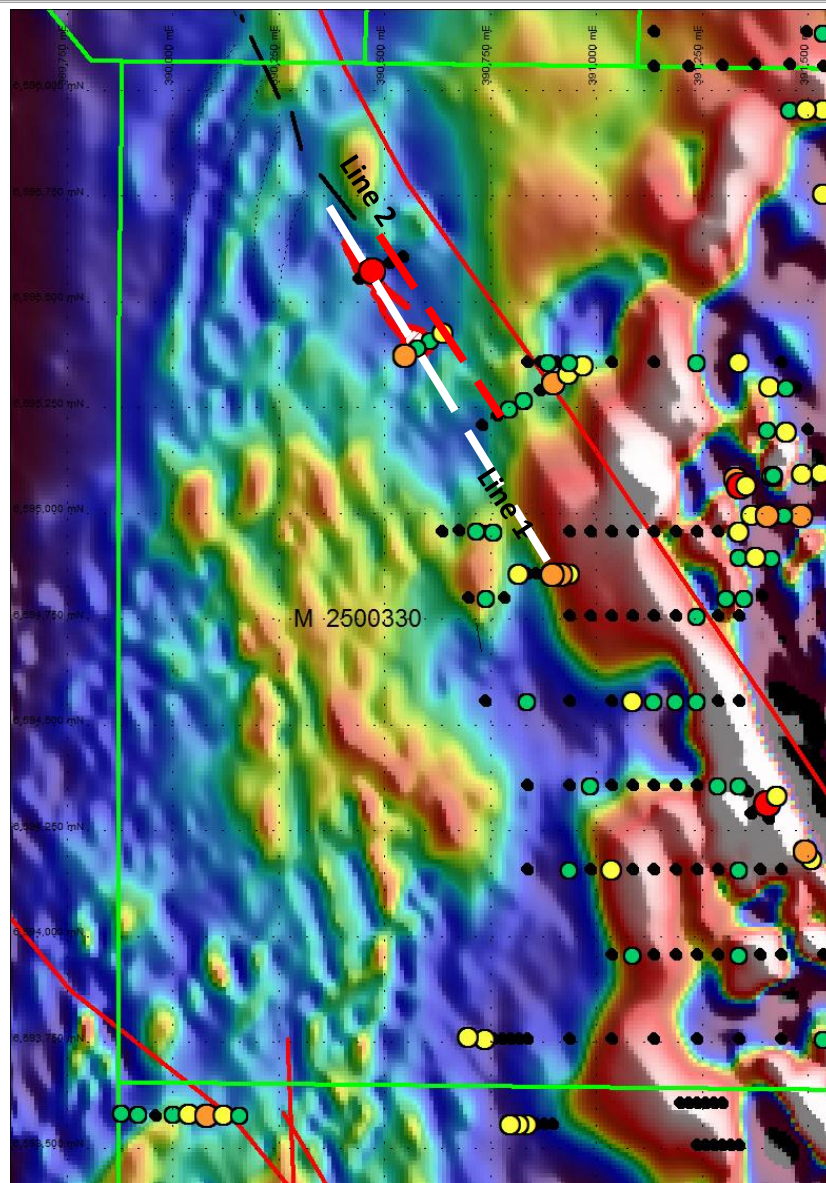


Figure 1 Aruma Resources' Steves Prospect showing magnetics with drill results (Dots) and anomaly trendlines (Lines 1 and 2, West and East respectively) (Au in holes = Red >5g/t, Orange >1g/t, Yellow >0.5g/t Au, Green>0.1g/t)

The understanding of the local controls on mineralisation will be enhanced by the compilation of all the data, and re-interpretation of the models from all data sources.

Results from Gindalbie

The initial drilling at **Lady Lauren** was completed in following up a 25.84g/t assay result from rock chip sampling and visible gold being found at this location. The drilling consisted of 12 RC holes for 1,020m and the results show a large number of anomalous gold mineralisation around the Lady Lauren quartz veins. The anomalous intersections are listed in the table below and include 4 greater than 1g/t Au.

Aruma Resources Limited

ABN 77 141 335 364 ASX: AAJ
Suite 33, 18 Stirling Highway, Nedlands WA 6009
Locked Bag 2000, Nedlands WA 6909, Australia
T +61 8 6389 1799 | F +61 8 6389 0112 | W www.arumaresources.com



RC	Dip/Az	GDA94	GDA94	Depth	Depth	Au (g/t)
Drillhole	Degrees	Easting	Northing	From	To	FA 30g
LLRC01	60/180	389881	6640518	13	14	0.26
				14	15	1.21
				15	16	0.41
				22	23	0.25
				75	76	0.3
				97	98	0.47
LLRC02	60/180	389878	6640539	48	49	0.2
				61	62	0.21
				68	69	1.75
LLRC03	60/180	389901	6640520	2	3	0.21
				35	36	0.21
LLRC04	60/180	389901	6640539	19	20	0.35
				20	21	1.24
				21	22	0.22
				24	25	0.9
				25	26	1.6
				26	27	0.72
				27	28	0.36
				42	43	0.4
				62	63	0.66
80	81	0.36				
LLRC05	60/180	389920	6640520	26	27	0.46
				54	55	0.36
LLRC06	60/180	389921	6640540	27	28	0.3
				29	30	0.27
				56	57	0.53
				57	58	0.36
LLRC08	60/180	389940	6640539	70	71	0.37
LLRC12	60/180	389818	6640461	38	39	0.3

Table 4: Anomalous (>0.2g/t Au) Gold intersections at Lady Lauren

These results are to be followed up by soil sampling in similar geological areas to the north of Lady Lauren in order to further map the extent of the gold anomalies found at the Lady Lauren quartz veins.

Aruma Resources Limited



Future work will involve a more regional soil sampling approach to investigate historical broad geochemical and HyMap anomalies. Up to five areas have been identified for appraisal in the coming quarter.

Jundee South (Marks) Drilling

The **Jundee South** RC drilling will be done in Q1 of the new financial year after heritage approval was gained. This is now scheduled for up to 1,000m to define the mineralisation to a depth of 100m to 130m depth. This drilling will allow the fresh rock mineralisation and geometry to be understood, which will help with the exploration model for the rest of the lease.

Project work in the next six months

Aruma's project areas in Western Australia are located in the Eastern Goldfields on areas with known gold endowments and strong indications of gold mineralisation. Aruma is concentrating exploration on the three advanced projects at Glandore, Gindalbie and Jundee South.

Aruma will be focussing activities and expenditure in the coming six months to allow a critical analysis of all the projects. This will allow the compilation of the considerable data obtained in the last year of drilling and analysis at all projects.

All of Aruma's projects have strong gold indicators and proven high grade potential. The ongoing work comprises:

- Data compilation and integration at **Glandore** to quantify known mineralisation
- The **Jundee South** RC drilling to define mineralisation to 100m depth
- Geochemical appraisal of gold anomalies in the western areas of Gindalbie
- Final appraisal of the Laverton East leases.
- The Company is funded for the coming exploration year with cash of \$3.2M at June 30.

For further information please contact:

Peter Schwann
Managing Director
Aruma Resources Limited
Ph: +61 8 6389 1799
Mobile: +61 417 946 370
info@arumaresources.com

Competent Person's Statement

The information in this release that relates to Exploration Results, Mineral Resources or Ore Reserves is based on information compiled by Peter Schwann who is a Fellow of the Australasian Institute of Mining and Metallurgy and Chartered Professional (Geology). Mr Schwann is a full time employee of the Company.

Mr Schwann has sufficient relevant experience to qualify as a Competent Person as defined in the JORC Code (2004) and consents to the inclusion of this information in the form and context in which it appears.

Aruma Resources Limited

ABN 77 141 335 364 ASX: AAJ
Suite 33, 18 Stirling Highway, Nedlands WA 6009
Locked Bag 2000, Nedlands WA 6909, Australia
T +61 8 6389 1799 | F +61 8 6389 0112 | W www.arumaresources.com