

29<sup>th</sup> May 2013

## *More High-Grade Gold in Two New Surface Zones near Old Pirate*

ABM Resources NL ("ABM" or "The Company") presents an update on extensional exploration work in the area around the Old Pirate High-Grade Gold Project in the Northern Territory.

### *Extensional Exploration:*

- **Bermuda South Prospects**
  - Located 400m south of main Old Pirate Resource and 150m south of Bermuda High-Grade Gold Prospect.
  - New high-grade gold surface sampling results:
    - 30m by 15m area with multiple quartz veins.
    - Surface assay results include:
      - 21.6g/t gold, 21.0g/t gold, 19.85g/t gold.
  - Untested with drilling, follow up work planned.
  
- **Bandit South Prospect**
  - Located 1.7 kilometres south east of Old Pirate.
  - Following up on previously announced 108g/t gold rock chip.
  - High-grade gold surface results from systematic trenching program:
    - Outcropping veins over area approximately 6m by 2m extending undercover to the south.
    - Surface assay results include:
      - 66.2g/t gold, 62.9g/t gold and 18.85g/t gold.
      - Average grade of 25.6g/t gold.
  - Untested with drilling, follow up work planned.
  
- More than 1000 other surface samples from multiple quartz veins pending assay.

### *Trial Mining / Processing Update:*

- Heavy equipment being mobilised to site.
- Site works to commence next week.
- All on schedule and budget.

Darren Holden, Managing Director of ABM Resources said, "We are on the verge of commencing our trial mining at Old Pirate. With heavy equipment being mobilised to site we remain on time and on budget. As we proceed into this important phase we are continuing our low-cost but effective surface testing of quartz veins. We are very pleased with yet another round of results with new high-grade gold bearing zones being discovered at surface illustrating the untapped potential of this extensive gold system."

### ***ABM's On-Going Search for Extensional High-Grade Gold Veins at Surface***

ABM is focused on bringing the high-grade Old Pirate Gold Deposit into production through staged development commencing with trial mining and processing in June / July of 2013. However, on-going exploration within trucking distance of the Old Pirate plant continues simultaneously to the trial mining. This work aims to extend the Old Pirate high-grade resource (1.88Mt averaging 11.96g/t gold for 723,800 ounces (uncut, refer to Appendix 2 for details)).

In 2012 ABM discovered the Golden Hind Deposit and within months of drilling the first hole the Company converted the project into a high-grade indicated resource estimation (113,000 tonnes averaging 16.45g/t for 59,100 ounces). Golden Hind has a footprint of less than 100m strike length of high-grade coarse gold in veins at surface and represents a potentially highly profitable open pit mining scenario. The small footprint falls between previous sampling lines and Golden Hind is along strike from other quartz veins which generally have low-grade gold or are barren. This taught ABM's exploration team that quartz veins can change in nature and transition from low-grade to high-grade over very short distances. As a result, the Company has commenced the 2013 season by mapping and sampling the many kilometres of strike length of other quartz veins in the area. This has already lead to the identification of high-grade gold at the Bermuda Zone (refer release dated 09/04/2013) and at the Bandit Trend (refer release dated 29/04/2013). Mapping and sampling are low-cost activities and can identify high-grade systems prior to confirmatory and resource drilling. This release details the on-going work at the Bandit South Area as well as a new area to the south of the Bermuda Zone discovery. There are over 1000 samples collected and in the laboratory and further results are expected shortly.

### ***Bermuda South Area***

The Bermuda South Area is located approximately 400m south of the main Old Pirate High-Grade Gold Deposit and 200m south of the Bermuda Zone. The prospect consists of high-grade gold identified in veins between 20cm and 4m wide. Prior to this sampling, these veins were thought to be barren of gold. Gold is identified from systematic rock samples revealing high grade gold over a strike length of approximately 30m and a zone of multiple veins approximately 15m wide. Only outcropping quartz has been sampled hence the mineralisation may extend in both width and strike extent beyond the outcrop. Surface grades from samples have included 21.60g/t gold, 21g/t gold, and 19.85g/t gold. Refer to Figure 1 and Figure 2 as well as Appendix 1 for further details.

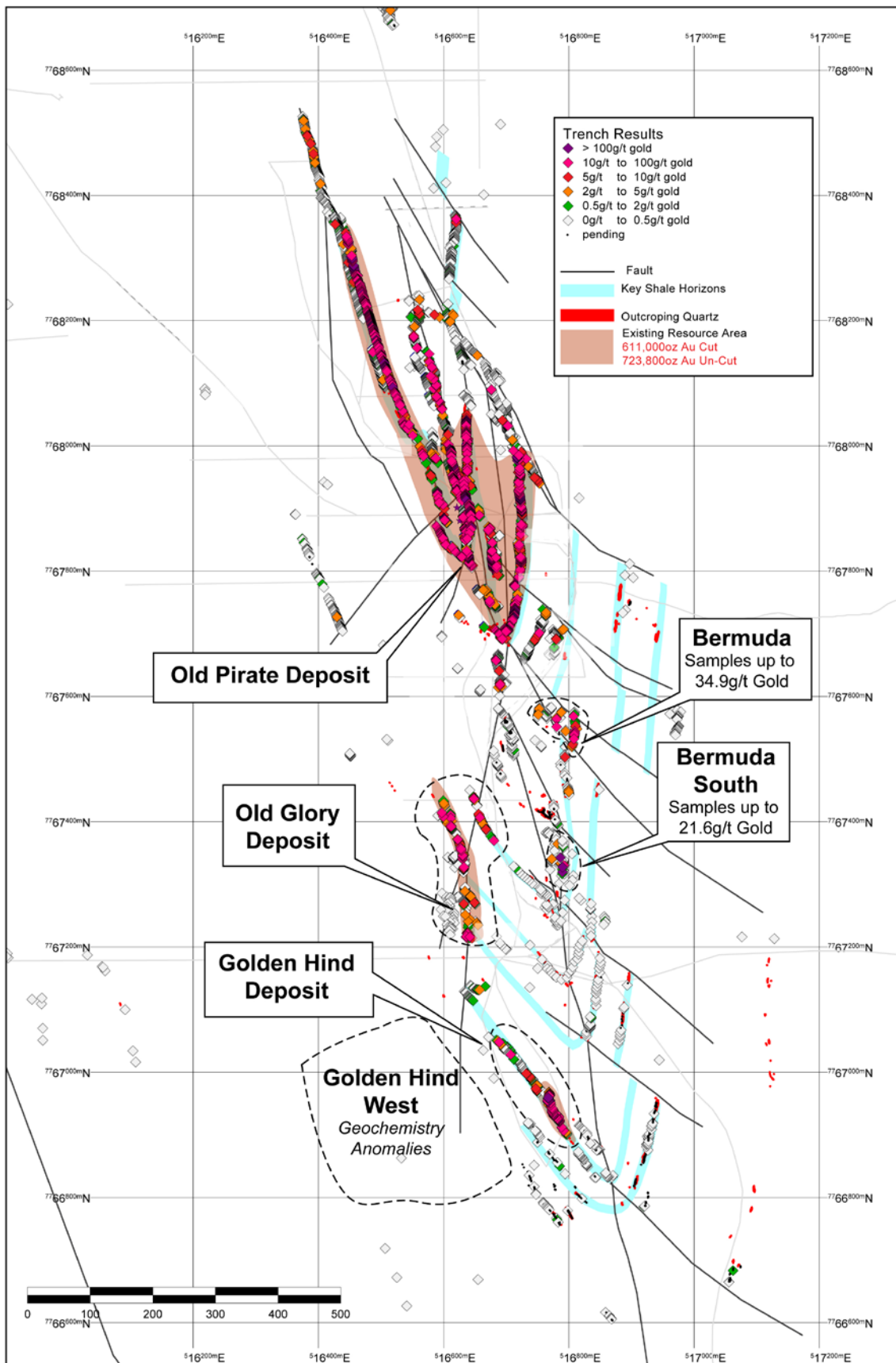
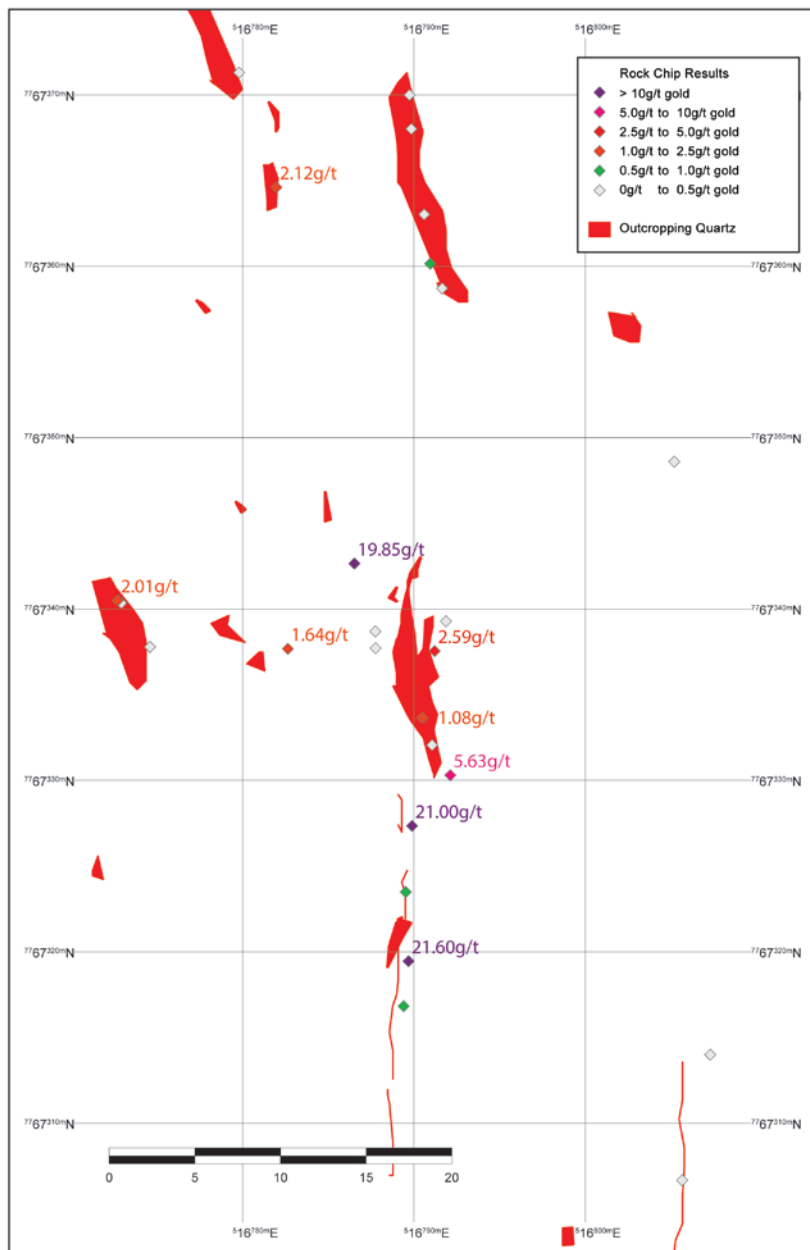


Figure 1. Bermuda South Area relative to Old Pirate Trend.



**Figure 2. Bermuda South outcrop rock chip sampling results.**

### *Bandit Trend*

The Bandit Trend (including the Bandit - Bandit South Area) consists of an area more than 4 kilometres long and 1.5 kilometres wide with widespread and outcropping quartz veins hosted in sedimentary shale and sandstone sequences. Some of the outcropping quartz is barren of gold, however, as with the Old Pirate area, quartz veins can trend from barren to high-grade over short strike lengths.

Recently rock sampling at Bandit returned anomalous results with a peak value of 108g/t gold. The vein yielding the 108g/t gold rock chip sample outcrops over several metres. The Company recently exposed extensions of the area around the 108g/t sample with trenching of the main vein and a parallel vein 2m to the west was also exposed. This sampling of the system extends over multiple outcropping veins in a zone 6m by 4m and continues under shallow cover into the principal target area where geophysics indicates structural complexity (faults and folds). Results include 66.2g/t gold, 62.9g/t gold, 18.85g/t gold and 13.45g/t gold. Refer Figure 3 and Figure 4 for further details as well as Appendix 1.

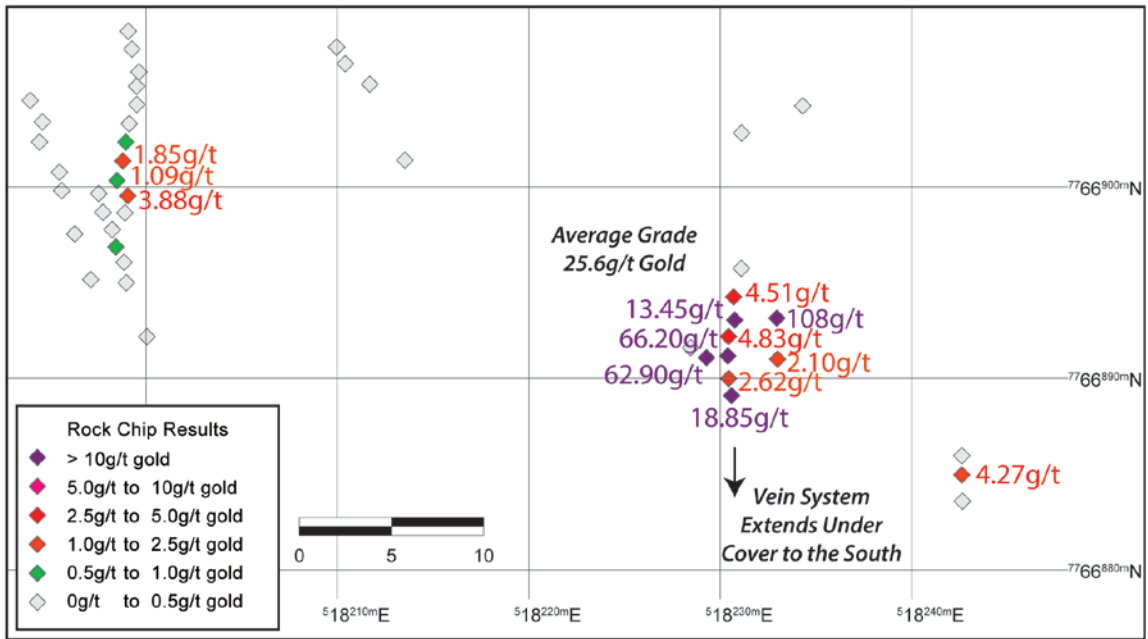


Figure 3. Bandit South Area trench sampling results.

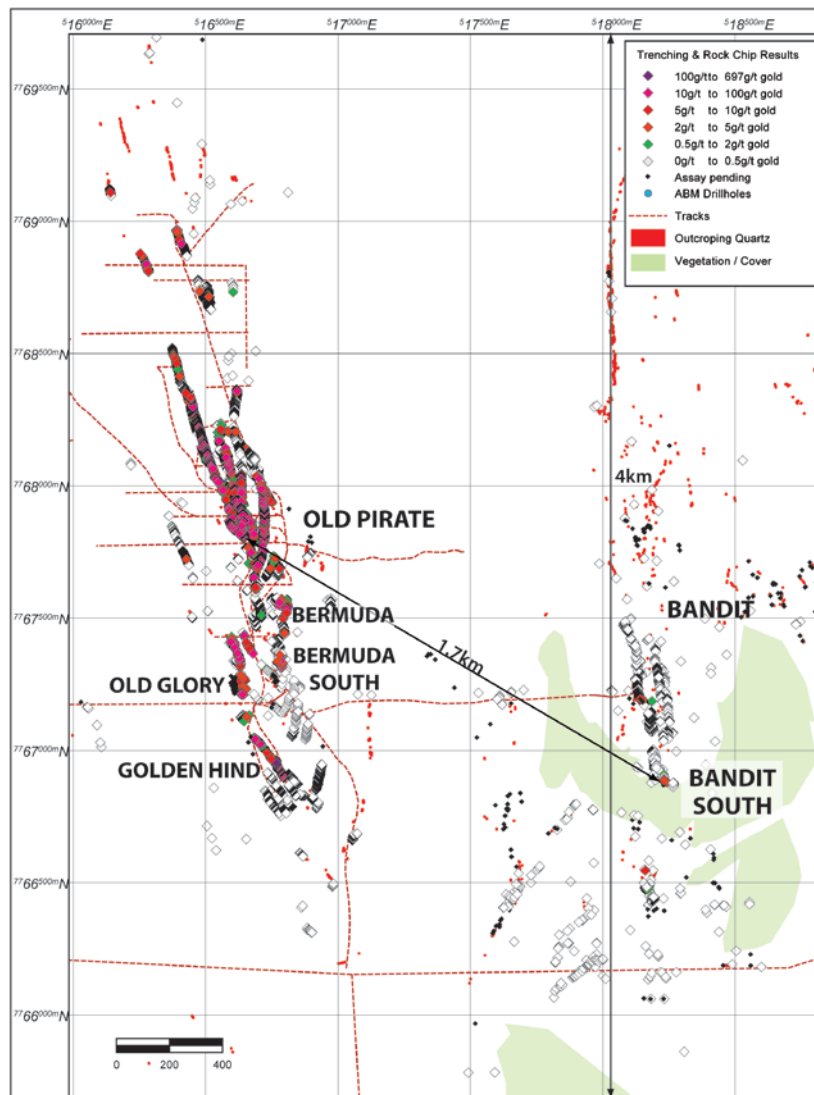


Figure 4. Bandit Trend location relative to Old Pirate Trend.

## Update on Old Pirate Trial Mine and Processing - Pilot Plant Construction

The construction of the Trial Mine and Pilot Plant remains on schedule and budget to commence digging in June 2013 and processing in July 2013. Heavy equipment is being mobilised to site and site works to commence next week.

## About ABM Resources

ABM is an exploration company developing several gold discoveries in the Central Desert region of the Northern Territory of Australia. The Company has a multi-tiered approach to exploration and development with a combination of high-grade potentially short-term production scenarios such as Old Pirate and the Golden Hind, large scale discoveries such as Buccaneer, and regional exploration discoveries such as the Kroda Gold Project. In addition, ABM is committed to regional exploration programs throughout its extensive holdings. ABM is well capitalised to achieve its milestones in 2013.

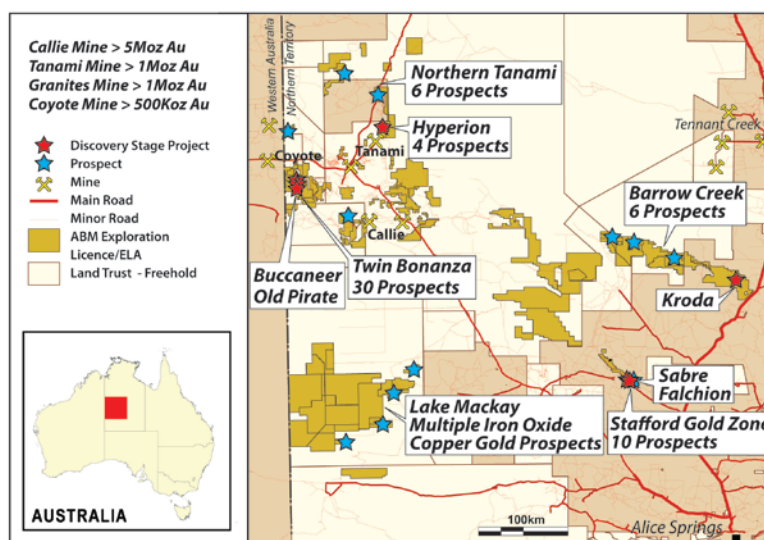


Figure 5. ABM Project Location Map Northern Territory.

Signed

Darren Holden – Managing Director

### Competent Persons Statement

The information in this report that relates to Exploration Results, Mineral Resources or Ore Reserves is based on information compiled by Mr Darren Holden who is a Member of The Australasian Institute of Mining and Metallurgy. Mr Holden is a full time employee of ABM Resources NL and has sufficient experience which is relevant to the style of mineralisation and type of deposit under consideration and to the activity which he is undertaking to qualify as a Competent Person as defined in the 2004 Edition of the "Australasian Code for Reporting Exploration Results, Mineral Resources and Ore Reserves". Mr Holden consents to the inclusion in the documents of the matters based on this information in the form and context in which it appears.

### For Further Information Please Contact

Jutta Zimmermann  
CFO / Company Secretary  
+61 8 9423 9777

Darren Holden  
Managing Director  
+61 8 9423 9777

Berdine Mastaglia  
Investor Relations Manager  
+61 8 9423 9777

**APPENDIX 1. Surface sampling results from the Bandit to Bandit South Area and Bermuda South Prospect.**

**Table 1. Recent Rock Chip samples from Bermuda South.**

Sample ID	Northing	Easting	RL	Au g/t
TBRK00488	7767319.46	516789.69	483.60	21.60
TBRK00486	7767327.34	516789.89	482.30	21.00
TBRK00479	7767342.65	516786.53	482.80	19.85
TBRK00485	7767330.30	516792.13	482.00	5.63
TBRK00482	7767337.55	516791.21	482.30	2.59
TBRK00468	7767364.61	516781.98	483.60	2.12
TBRK00474	7767340.50	516772.71	475.20	2.01
TBRK00478	7767337.69	516782.65	480.20	1.64
TBRK00483	7767333.65	516790.49	482.70	1.08
TBRK00466	7767360.14	516790.96	483.50	0.87
TBRK00489	7767316.83	516789.41	483.70	0.85
TBRK00487	7767323.48	516789.53	483.20	0.55
TBRK00481	7767339.29	516791.87	483.40	0.32
TBRK00473	7767348.60	516805.20	484.60	0.15
TBRK00490	7767298.10	516801.27	483.70	0.14
TBRK00491	7767306.67	516805.66	485.70	0.07
TBRK00475	7767340.35	516772.92	475.50	0.05
TBRK00477	7767338.69	516787.75	487.00	0.05
TBRK00484	7767332.07	516791.07	482.50	0.05
TBRK00480	7767337.72	516787.76	482.70	0.02
TBRK00464	7767368.02	516789.85	485.50	0.01
TBRK00476	7767337.79	516774.60	475.10	0.01
TBRK00463	7767370.00	516789.74	478.30	<0.01
TBRK00465	7767363.03	516790.60	483.90	<0.01
TBRK00467	7767358.70	516791.65	482.90	<0.01
TBRK00469	7767371.31	516779.80	483.20	<0.01
TBRK00470	7767376.79	516778.51	483.80	<0.01
TBRK00492	7767314.00	516807.29	485.30	<0.01

All samples collected by ABM Resources personnel, with location recorded using hand held GPS. Samples processed by ALS Global in Alice Springs and Perth using AA26 Fire Assay method.

**Table 2. Recent Trench samples from Bandit / Bandit South area.**

Sample ID (T=original & U=duplicate)	Combined weight (kg)	Easting (mE)	Northing (mN)	Sample Length (m)	Sample Width (m)	Original Sample Grade  (Au g/t)	Duplicate Sample Grade  (Au g/t)	Average Grade  (Au g/t)
T/U08464	2.53	518230.4	7766891.17	1.00	0.70	66.20	0.56	33.38
T/U08468	2.87	518229.29	7766891.08	1.10	0.55	2.05	62.90	32.48
T/U08462	2.68	518230.59	7766889.1	1.00	0.15	7.06	18.85	12.96
T/U08466	1.96	518230.75	7766893.04	1.00	0.25	7.61	13.45	10.53
T/U08467	2.02	518230.7	7766894.25	1.00	0.15	1.93	4.51	3.22
T/U08465	2.63	518230.43	7766892.18	1.00	1.00	4.83	0.54	2.69
T/U08471	1.73	518242.62	7766884.96	0.85	0.25	4.27	<0.01	2.13
T/U08497	2.29	518199.05	7766899.53	0.80	1.15	0.24	3.88	2.06
T/U08463	1.60	518230.44	7766889.99	1.00	0.20	0.63	2.62	1.63
T/U08499	2.94	518198.79	7766901.35	1.00	1.15	0.74	1.85	1.30
T/U08498	3.36	518198.49	7766900.33	1.05	1.40	0.62	1.09	0.86
T/U08493	2.36	518198.43	7766896.86	0.90	1.20	0.85	0.51	0.68
T/U08500	3.16	518198.95	7766902.34	1.00	1.35	0.63	0.51	0.57
T/U08492	2.56	518198.85	7766896.06	1.00	0.90	0.20	0.65	0.43
T/U08506	2.52	518197.11	7766895.16	1.10	0.30	0.68	0.17	0.43
T/U08495	2.37	518197.75	7766898.67	1.15	0.65	0.41	0.33	0.37
T/U08494	2.41	518198.23	7766897.77	0.80	1.20	0.20	0.44	0.32
T/U08508	3.23	518195.59	7766899.8	1.00	0.60	0.13	0.40	0.27
T/U08509	2.82	518195.48	7766900.76	1.00	0.60	0.20	0.21	0.21
T/U08496	2.19	518198.9	7766898.64	1.00	1.00	0.21	0.17	0.19
T/U08502	3.21	518199.52	7766904.3	1.10	1.00	0.14	0.17	0.16
T/U08507	2.49	518196.28	7766897.54	2.00	0.30	0.13	0.12	0.13
T/U08469	2.50	518228.45	7766891.6	0.90	0.00	0.10	0.13	0.12
T/U08491	2.51	518198.97	7766894.99	1.30	1.00	0.09	0.14	0.12
T/U08503	2.97	518199.51	7766905.25	0.85	0.95	0.12	0.11	0.12
T/U08504	3.20	518199.63	7766906	0.70	1.40	0.08	0.07	0.08
T/U08505	2.33	518197.53	7766899.65	1.00	0.85	0.02	0.06	0.04
T/U08501	2.57	518199.12	7766903.3	1.00	1.30	0.02	0.02	0.02
T/U08470	1.93	518242.65	7766883.58	0.90	0.30	0.01	0.01	0.01
T/U08487	1.58	518209.96	7766907.3	1.05	0.40	0.03	<0.01	0.01
T/U08472	2.08	518242.62	7766885.96	1.00	0.25	0.02	<0.01	0.01
T/U08488	2.41	518210.41	7766906.43	1.20	0.65	<0.01	0.01	0.00
T/U08489	3.12	518211.69	7766905.36	0.85	1.00	<0.01	<0.01	<0.01
T/U08490	2.95	518213.53	7766901.39	1.50	0.65	<0.01	<0.01	<0.01

All samples assayed by ALS Global in Alice Springs and Perth using AA26 fire assay techniques for gold. Standards and blanks are inserted to monitor laboratory performance. Samples not within the area of Figure 3 are not shown in the Table. Refer to Figure 4 for other sample locations and results on the Bandit Trend.



## APPENDIX 2. Resource Estimations

### 1. Old Pirate Resources Estimations

Table 1.1 Old Pirate Trend Overall High-Grade Mineral Resource Estimation January 2013

Category	Tonnes	Gold Grade (g/t) (300g/t top-cut)	Gold Grade (g/t) (uncut)	Ounces Gold (300g/t top-cut)	Ounces Gold (uncut)
Indicated	889,000	8.19	8.93	234,100	255,300
Inferred	993,000	11.80	14.67	376,900	468,500
<b>Total</b>	<b>1,882,000</b>	<b>10.10</b>	<b>11.96</b>	<b>611,000</b>	<b>723,800</b>

Mineral Resources estimated at 1g/t cut-off except for the Central Zone estimated at a 3g/t cut-off. Totals may vary due to rounding. There is an additional 414,900 tonnes averaging 1.74g/t gold for 23,300 ounces of gold in low-grade Indicated Resource in the Central Zone (>1g/t, <3g/t cut-offs).

For further information refer to ASX release dated 04/02/2013.

### 2. Buccaneer HGZ Resources Estimations

Table 2a. Combined Resource Estimation with no top-cut, using a 1g/t block model cut-off

	Tonnes	Gold (g/t)	Ounces
Indicated	7,117,000	2.25	515,300
Inferred	8,183,000	2.78	732,200
Total	15,300,000	2.54	1,247,500

Table 2b. Combined Resource Estimation using a variable top-cut, and a 1g/t block model cut-off

	Tonnes	Gold (g/t)	Ounces
Indicated	7,117,000	2.00	458,500
Inferred	8,183,000	2.43	639,700
Total	15,300,000	2.23	1,098,200

Table 2c. Combined Resource Estimation with no top-cut, using a 2g/t block model cut-off

	Tonnes	Gold (g/t)	Ounces
Indicated	2,261,000	4.17	303,000
Inferred	3,573,000	4.56	523,500
Total	5,834,000	4.41	826,500

Table 2d. Combined Resource Estimation using a variable top-cut, and a 2g/t block model cut-off

	Tonnes	Gold (g/t)	Ounces
Indicated	2,261,000	3.39	246,200
Inferred	3,573,000	3.75	431,100
Total	5,834,000	3.61	677,300

Note – totals may vary due to rounding

For further information refer to ASX release dated 05/02/2013.

### 3. Twin Bonanza Global Resource (Old Pirate and Buccaneer)

Table 3.1 Twin Bonanza Global Resource with Old Pirate at 1g/t cut-off & Buccaneer at 2.0g/t cut-off

Project	Tonnes all categories	Grade (g/t Au) all categories	Ounces gold
Old Pirate Trend	1,882,000	10.1	611,000
Buccaneer HGZ	5,834,000	3.61	677,300
<b>Total</b>	<b>7,716,000</b>	<b>5.19</b>	<b>1,288,300</b>

Table 3.2 Twin Bonanza Global Resource with Old Pirate & Buccaneer at 1.0g/t cut-off

Project	Tonnes all categories	Grade (g/t Au) all categories	Ounces gold
Old Pirate Trend	1,882,000	10.1	611,000
Buccaneer HGZ	15,300,000	2.23	1,098,200
<b>Total</b>	<b>17,182,000</b>	<b>3.10</b>	<b>1,709,200</b>

Note – totals may vary due to rounding

For further information refer to ASX release dated 05/02/2013.