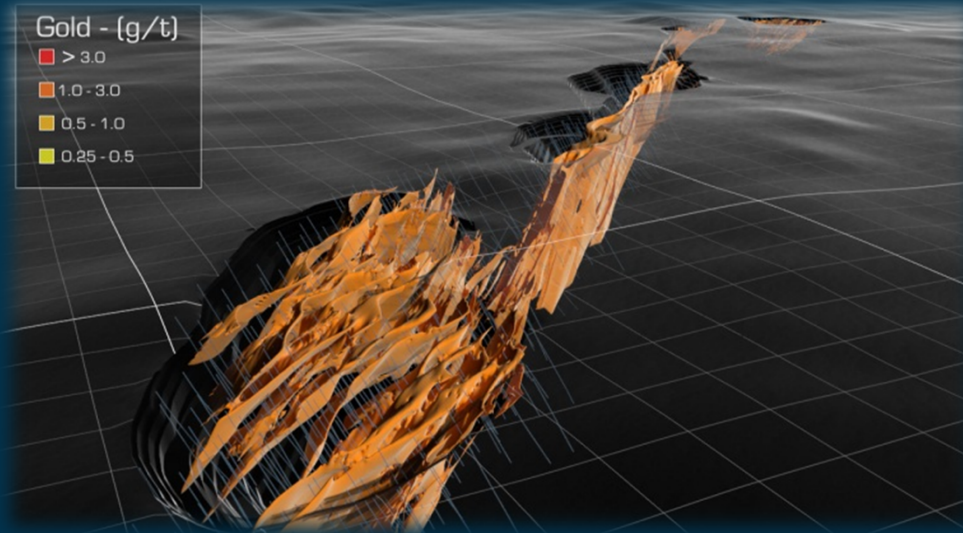


Africa Down Under 2013



Booth 63



AMPELLA

AMPELLA MINING LIMITED

Ampella Mining Limited (ASX Code: AMX)

ABN: 59 121 152 001

Disclaimer



Summary information

The information contained in this presentation or subsequently provided to any recipient of this presentation whether orally or in writing by or on behalf of Ampella Mining Limited (Ampella) including by its respective employees, agents or consultants (Information) is provided to the recipients on the terms and conditions set out in this notice.

The purpose of this presentation is to provide recipients with summary information relating to Ampella. This presentation has been prepared by Ampella and each recipient must make his/her own independent assessment and investigation of Ampella and its business and assets and should not rely on any statement or the adequacy and accuracy of the Information.

The Information is of general background and does not purport to be complete. It should be read in conjunction with Ampella's other periodic and continuous disclosure announcements lodged with the Australian Securities Exchange, which are available at www.asx.com.au.

Not an offer of securities or financial product advice

This presentation does not constitute an offer, invitation or recommendation to subscribe for or purchase any security in Ampella and neither this presentation nor anything contained in it shall form the basis of any contract or commitment.

The distribution of this presentation in jurisdictions outside Australia may be restricted by law and any such restrictions should be observed. Any failure to comply with such restrictions may constitute a violation of applicable securities laws. In particular, this presentation may not be released or distributed in the United States. This presentation does not constitute an offer to sell, or a solicitation of an offer to buy, securities in the United States. Any securities described in this presentation have not been, and will not be, registered under the US Securities Act of 1933 and may not be offered or sold in the United States except in transactions exempt from, or not subject to, registration under the US Securities Act and applicable US state securities law.

This presentation is for information purposes only and is not financial product or investment advice, nor a recommendation to acquire Ampella shares. It has been prepared without taking into account the objectives, financial situation or needs of individuals.

Forward-looking statements

This presentation contains references to certain intentions, expectations and plans of Ampella and other "forward-looking statements" that are based on current expectations. These statements are not guarantees of future performance, are subject to risks and uncertainties and may or may not be achieved.

The performance and operation of Ampella may be influenced by a number of factors, many of which are outside the control of Ampella. No representation or warranty, express or implied, is made by Ampella or its respective directors, employees, officers, agents, consultants or advisers that intentions, expectations or plans will be achieved either totally or partially or that any particular rate of return will be achieved.

The forward looking statements only speak as at the date of this presentation and, other than as required by law of applicable jurisdictions, Ampella disclaims any duty to update forward looking statements to reflect new developments.

Past performance information given in this presentation is given for illustrative purposes only and should not be relied upon as (and is not) an indication of future performance.

Competent Person's statement

Unless otherwise indicated, mineral exploration, resource and reserve estimates contained in this document have been prepared in accordance with the 2004 edition of the Joint Ore Reserves Committee's Australasian Code for Reporting of Mineral Resources and Ore Reserves (JORC Code).

The Information that relates to exploration results is based on information compiled by Dr Paul Kitto, who is a member of the Australian Institute of Geoscientists. Dr Kitto is employed by Ampella.

Dr Kitto has sufficient experience relevant to the style of mineralisation and type of deposit under consideration and to the activity he is undertaking to qualify as a Competent Person as defined in the JORC Code. Dr Kitto consents to the inclusion of the matters based on information in the form and context in which it appears.

The Information that relates to mineral resources for the Konkera Gold Prospect is based on information compiled by Mr Don Maclean. Mr Don Maclean is a consultant from Ravensgate Mineral Industry Consultants, an independent consultancy group specialising in mineral resource estimation, evaluation and exploration. Mr Don Maclean is a Member of the Australian Institute of Geoscientists. He has sufficient experience which is relevant to the style of mineralisation and type of deposit under consideration and to the activity which he is undertaking to qualify as a Competent Person as defined in the JORC Code. Mr Don Maclean consents to the inclusion in this report of the matters based on information in the form and context in which it appears.

Presentation Summary



1. CORPORATE

2. COUNTRY OVERVIEW

3. EXPLORATION

4. PFS & METALLURGY

5. HEALTH, SAFETY, ENVIRONMENT & COMMUNITY

6. CONCLUSIONS

Investment Highlights



- ✓ Experienced Management Team & correctly skilled Board
- ✓ 3.25M ounces gold in JORC Resource[^]
- ✓ Largest, single undeveloped gold resource at 1.0g/t Au cut-off in Burkina Faso, now in Feasibility*
- ✓ PFS progressing; EIA & RAP submitted
- ✓ New prospects identified along 150 kilometres of previously unexplored Batié West Shear
- ✓ Permits covering 3,250 km² in Burkina Faso & 1,200 km² in adjacent Cote d'Ivoire
- ✓ Strong cash position
- ✓ Judicious use of funds
- ✓ 12 months LTI free



[^] see Competent Persons Statement page 2 (ASX Announcement dated 5th March 2013).

Corporate Overview



Directors



Peter Mansell
*Non Executive Chairman
(Legal, Corporate ASX 100
experience)*



Dr Paul Kitto
*Managing Director
(Geology)*



Dr Michael Anderson
*Non Executive Director
(Geology / Corporate)*



Ronnie Beevor
*Non Executive Director
(Finance, Corporate)*



Ron Renton
*Non Executive Director
(Mining / Engineering)*

Experienced Management Team



Drew Totterdell
*General Manager Finance &
Corporate Development*



Neil Hackett
Company Secretary



Jean Luc Roy
Chief Operations Officer



Simon Ford
Study Manager



Tony Rudd
Exploration Manager

Strong local employment

Corporate Overview



ASX Listed

Ampella Mining Limited (ASX: AMX)

Shares on Issue	248.0M
Market Capitalisation: (27th August 2013)	A\$40.9M
Cash at Bank: (30th June 2013 - unaudited)	A\$21.7M

Substantial Shareholder: (>5%; 10th July 2013)	
Taurus Funds Management	18.8%

- **Judicious Use of Funds**
 - Extremely mindful of external economic conditions & gold price
 - Strategic expenditure review and cost reduction across the business:
 - Balance between cash conservation and project development
 - Strategies implemented include:
 - Staff reductions
 - Pay cuts (Directors & Staff)
 - Stoppage of non-essential work programs
 - Review of feasibility studies timelines
 - Review corporate overheads



Presentation Summary



1. CORPORATE

2. COUNTRY OVERVIEW

3. EXPLORATION

4. PFS & METALLURGY

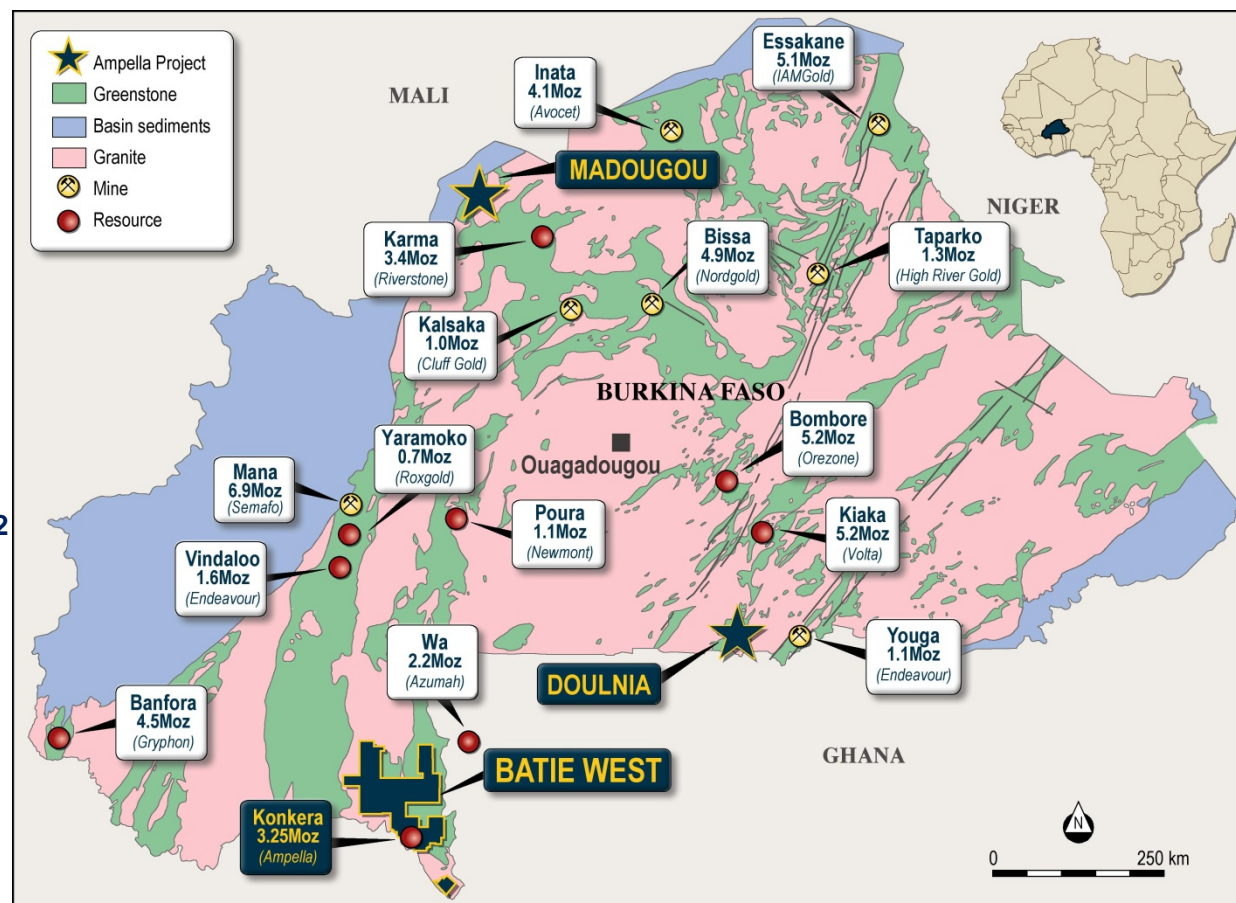
5. HEALTH, SAFETY, ENVIRONMENT & COMMUNITY

6. CONCLUSIONS

Burkina Faso



- 22% of the gold-rich Birimian Greenstones
- 7 new gold mines since 2007*
- Africa's 4th largest gold producer*
- Over 50M ounces gold resources discovered*
- Ampella permits ~3,250 km²
 - Batie West Project
 - Madougou JV
 - Doulnia JV
- Cote d'Ivoire – additional 1,200 km²



* 2012 Mining Journal – Burkina Supplement

Burkina Faso - Country Overview



- **Stable Democracy since 1987:**
 - Parliamentary and municipal elections completed Dec. 2012
 - Presidential elections held 2010 (5 year terms)
- Burkina Faso rates as one of the most attractive destination for mining in Africa (2012/13 Fraser Institute Survey, PPI Index.)
- **Regulatory Regime:**
 - Mining Act based on WA legislation
 - Government pro-active for mining
 - 10% Government Free Carry
 - 5% Gold Royalty
 - 17.5% Concessional Mining Corporate Tax



Presentation Summary



1. CORPORATE

2. COUNTRY OVERVIEW

3. EXPLORATION

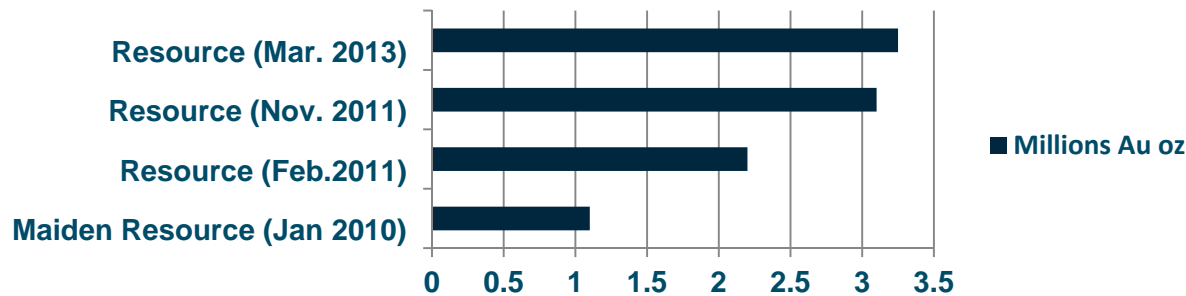
4. PFS & METALLURGY

5. HEALTH, SAFETY, ENVIRONMENT & COMMUNITY

6. CONCLUSIONS

Exploration - Recap

- **Discovery of the Batie West Shear June 2008, previously unknown & unexplored area**
- **Batie West Project Acquired Sept. 2008**
- **150 km shear zone, prospective region yielding strong early results (JORC compliant):**



- **Multiple gold occurrences on and off shear zone**
- **Priority focus on discovery of additional 300,000 - 400,000 free-milling ounces**



see Competent Persons Statement P2, ASX release Jan 2010
 ^ see Competent Persons Statement P2, ASX release Feb 2011
 * see Competent Persons Statement P2, ASX release Nov 2011
 ~ see Competent Persons Statement P2, ASX release Mar 2013

Konkera JORC Resource Table



Independent Mineral Resource Estimate (JORC) – March 2013

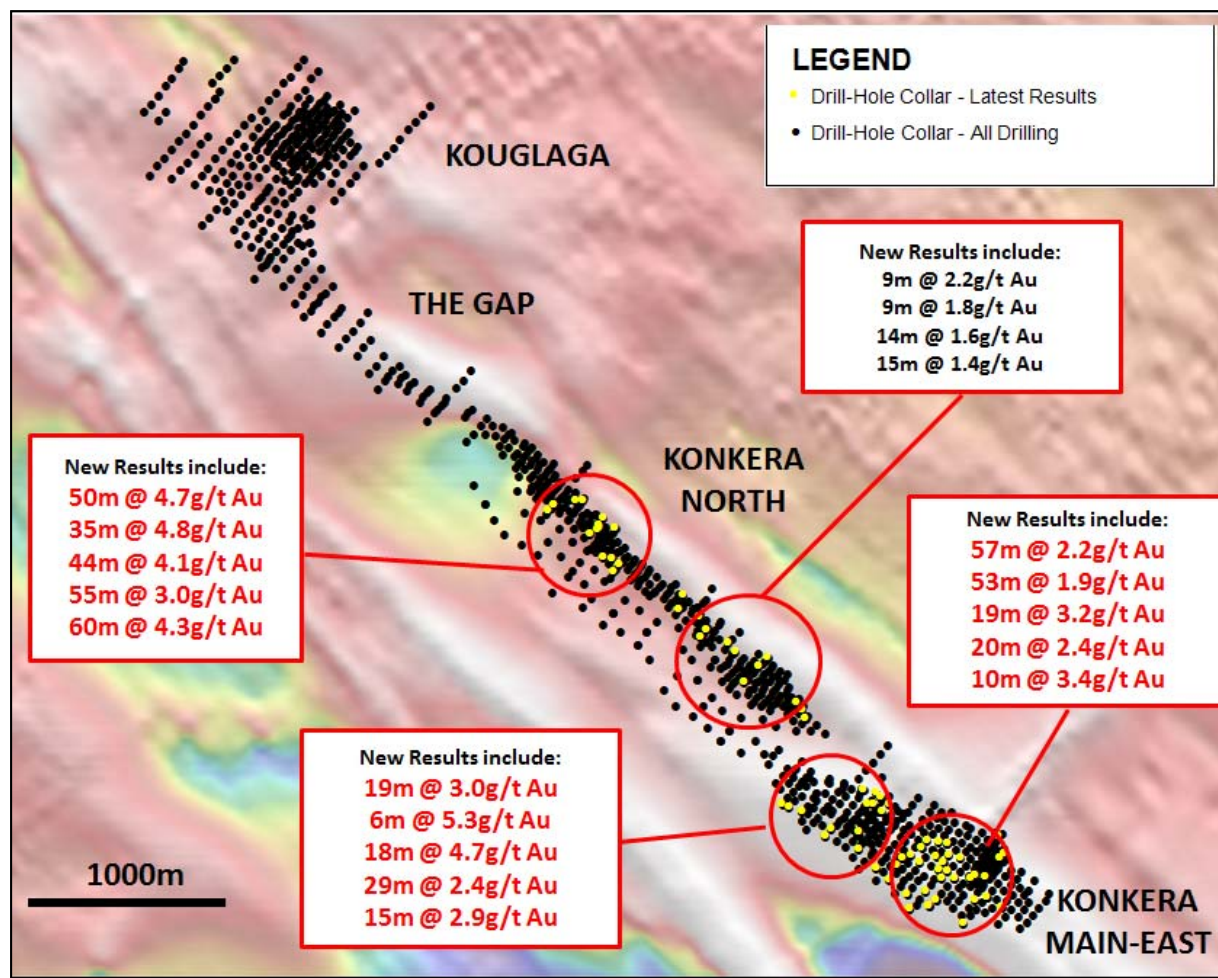
RESOURCE CATEGORIES									
	Indicated			Inferred			Total		
Au Cut-off	Tonnes*	Grade (g/t Au)*	Ounces	Tonnes*	Grade (g/t Au)*	Ounces	Tonnes*	Grade (g/t Au)*	Ounces
0.5	34,196,772	1.8	1,918,598	24,977,794	1.7	1,334,865	59,174,564	1.7	3,253,825
1.0	26,258,061	2.0	1,717,330	16,757,633	2.1	1,136,659	43,015,694	2.1	2,854,281
2.0	9,176,513	3.2	931,689	6,561,580	3.2	676,147	15,738,093	3.2	1,607,765

Largest Single undeveloped gold resource in Burkina Faso[#]

[#]At 1 g/t gold cut-off

Competent Person is Don Maclean, see page 2 for Competent Person Statement

Konkera JORC Resource

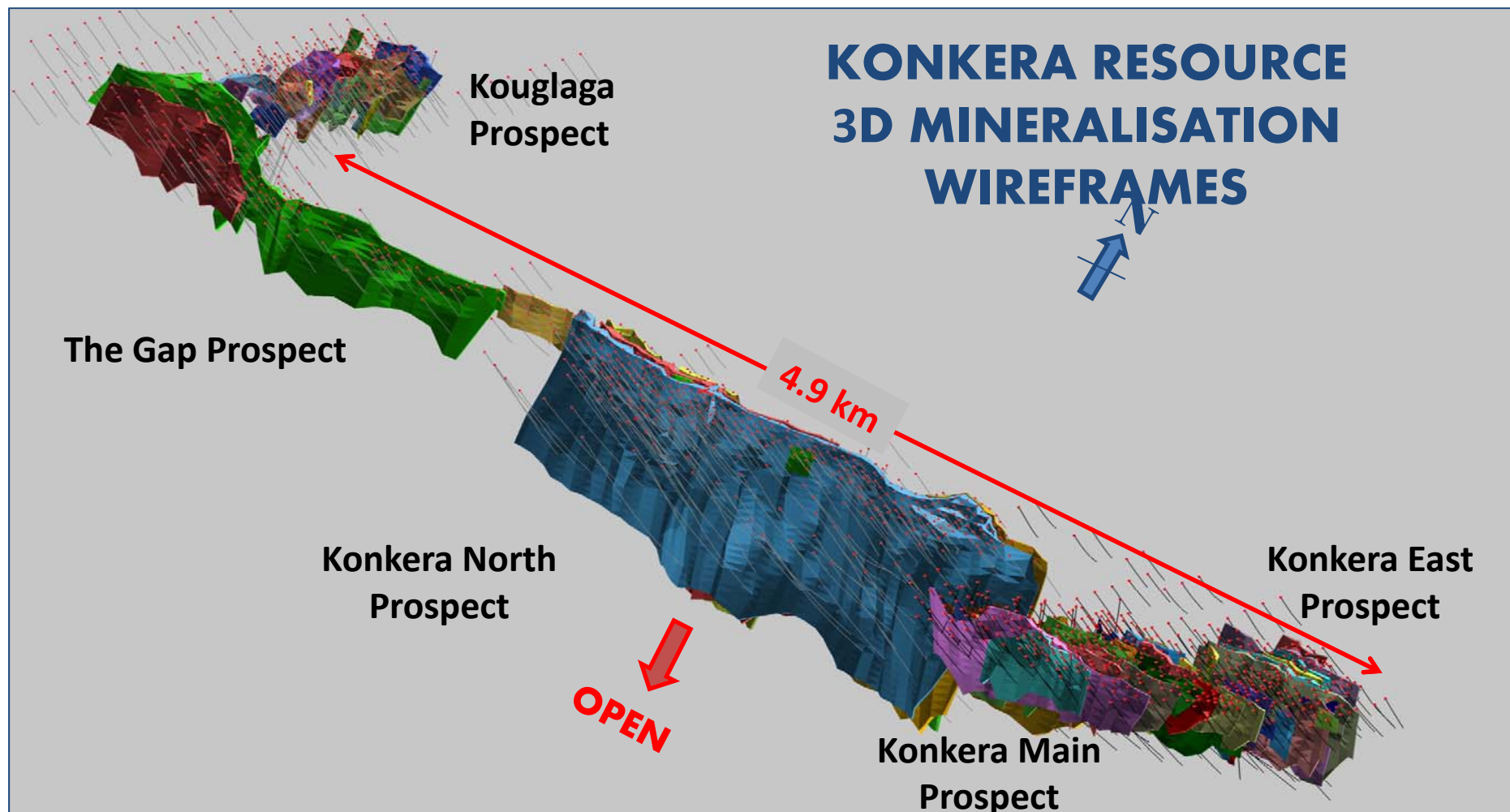


* At 1 g/t gold cut-off

INFILL DRILLING

- Konkera resource infill drilling program completed 2012
- Resource update completed March 2013
- Successful pit optimisations in 2013 required additional infill drilling
- Latest round of drilling just announced

Konkera JORC Resource



Konkera JORC Resource



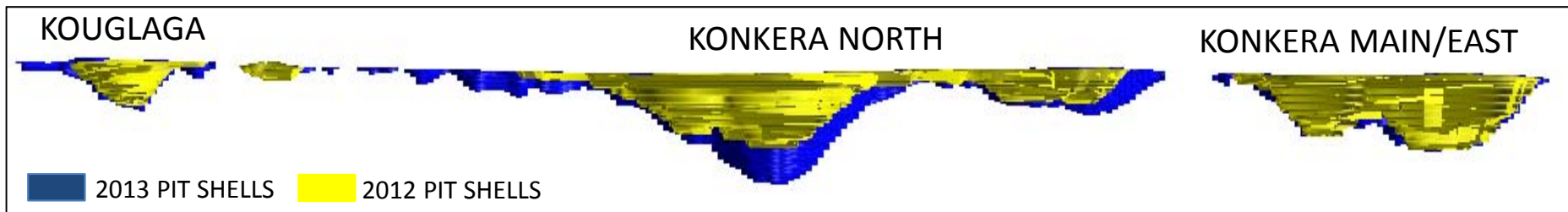
Konkera Infill/Conversion Drilling 2013

- Further infill drill programs were designed to convert additional ore blocks from Inferred to Indicated in larger pit shells resulting from recent pit optimisations
- The programs involved:
 - 14,190m RC Drilling & 1,710m Diamond Drilling

11m at 12.0 g/t Au
 30m at 5.8 g/t Au
 16m at 5.9 g/t Au
 9m at 4.5 g/t Au

18m at 7.5 g/t Au
 38m at 3.3 g/t Au
 12m at 2.6 g/t Au
 11m at 1.9 g/t Au

17m at 2.4 g/t Au
 10.1m at 4.6 g/t Au
 18m at 2.4 g/t Au
 6m at 6.9 g/t Au
 32m at 2.0 g/t Au



Konkera Resource Open-Pits Longitudinal Cross-Section (looking East)

2013 Exploration Focus



Regionally in 2013 Ampella are focussed on the following exploration programs:

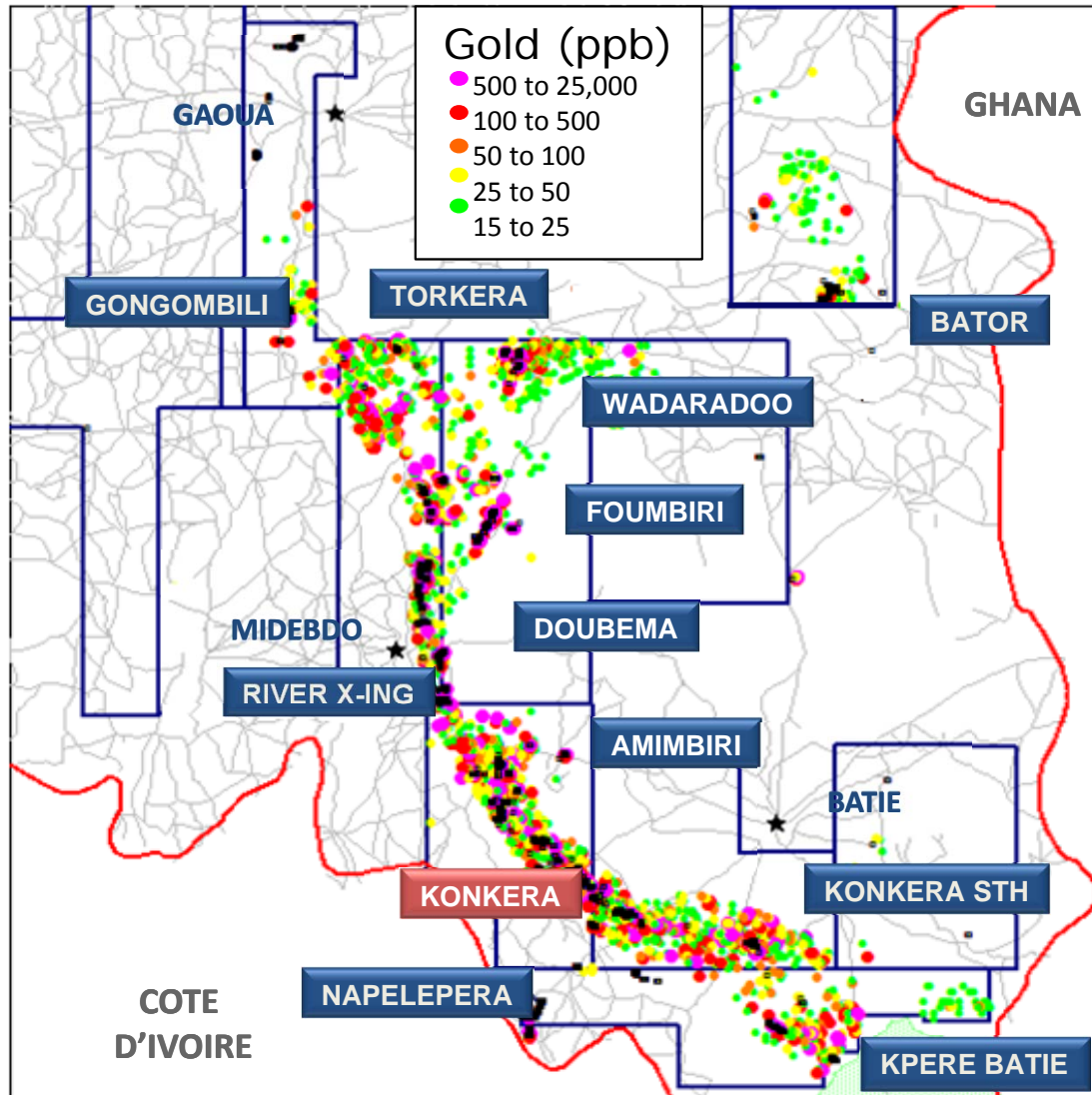
• Torkera	Infill RC/DD	Completed – follow up required
• Wadarado	RC	Completed – follow up required
• Napelapera	Aircore/RC	Drilling under way
• Amimbiri South	Aircore/RC	Completed
• Kpere Batie and Tonior	Aircore	On Hold
• River Crossing	Aircore	Completed
• Passena	Auger/Aircore	On Hold
• Bator Extension	Auger/Aircore	On Hold
• Kpere	Auger	Completed
• Kaldera	Auger	On Hold

Primary target characteristics:

- Deeply weathered
- Shallow
- Intrusive related
- Free milling material



2013 Exploration Focus



Current Exploration Targets:

- | | |
|----------------|-------------------|
| 1. Torkera | 6. River Crossing |
| 2. Wadaradoo | 7. Gongombili |
| 3. Napelepera | 8. Bator |
| 4. Amimbiri | 9. Kpere |
| 5. Kpere Batie | 10. Kaldera-Gaoua |

- **Torkera (RC Results)**

- 11m @ 8.2 g/t Au
- 6m @ 10.3 g/t Au
- 13m @ 3.6 g/t Au

- **Wadaradoo (Initial RC Results)**

- 74m @ 2.6g/t Au
- 9m @ 5.9g/t Au
- 7m @ 8.0 g/t Au

- **Napelapera (New RC Results)**

- 25m @ 2.6g/t Au
- 31m @ 1.4g/t Au

2013 Exploration Focus



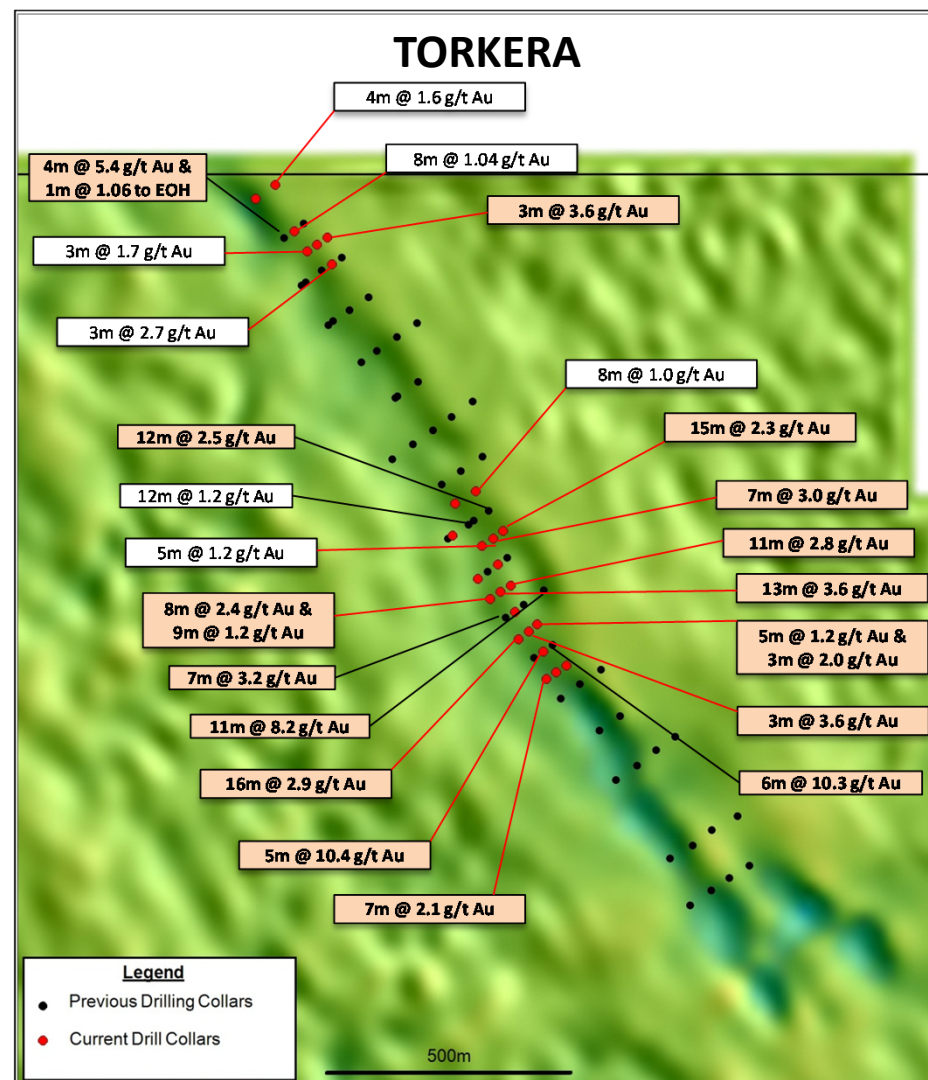
Konkera	Vol (m3)	Tonnes	Au (g/t)	oz Au
Konkera North (surface to 100mRL)	7,900,000	21,900,000	1.8	1,226,000
Konkera North (Below 100mRL)	4,500,000	12,900,000	1.9	783,000
Konkera Main	4,400,000	12,500,000	1.6	640,000
Konkera East	2,400,000	6,600,000	1.7	358,000
Kouglaga	900,000	2,200,000	2.0	136,000
The Gap	1,400,000	3,600,000	1.2	137,000
TOTAL (JORC)				3,280,000
Exploration Target*	Vol (m3)	Tonnes	Au (g/t)	oz Au
Foumbiri	1,650,000	4,000,000	1.3	166,000
Doubema	309,000	750,000	1.6	39,000
Torkera	1,205,000	3,490,000	2.0	229,000
Napelapera		6,677,338	1.5	355,000
Wadaradoo East			0.6	500,000
Wadaradoo South			3.0	250,000
TOTAL				1,539,000

* The potential tonnes and grades are conceptual in nature and there is insufficient exploration to estimate a Mineral Resource at this stage and that it is uncertain if further exploration will result in the estimation of a Mineral Resource

2013 Exploration Focus - Torkera

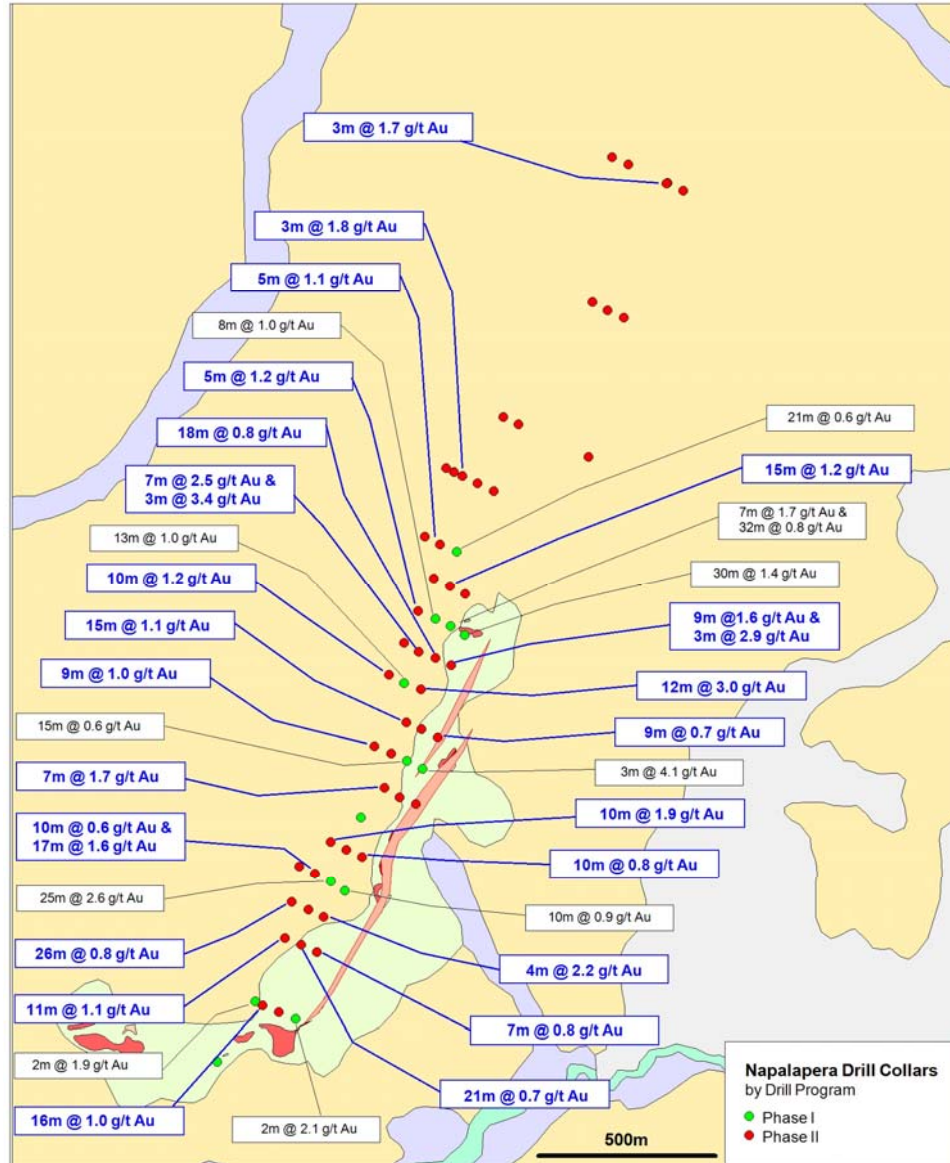


- Shallow high-grade mineralisation identified at Torkera
- 35kms north of Konkera Resource
- Previously:
 - 11 metres @ 8.2 g/t Au
 - 6 metres @ 10.3 g/t Au
 - 4 metres @ 5.4 g/t Au
 - 7 metres @ 3.2 g/t Au
 - 12 metres @ 2.5 g/t Au
- Latest:
 - 5 metres @ 10.4 g/t Au
 - 13 metres @ 3.6 g/t Au
 - 7 metres @ 3.0 g/t Au
 - 16 metres @ 2.9 g/t Au
 - 11 metres @ 2.8 g/t Au
 - 15 metres @ 2.3 g/t Au
- The 450m strike of “higher-grade” material averaging over 3 g/t Au
- Initial Exploration Target* of 229,000 oz @ 2.0g/t Au



* The potential tonnes and grades are conceptual in nature and there is insufficient exploration to estimate a Mineral Resource at this stage and that it is uncertain if further exploration will result in the estimation of a Mineral Resource

2013 Exploration Focus - Napelaperera



NAPELAPERERA

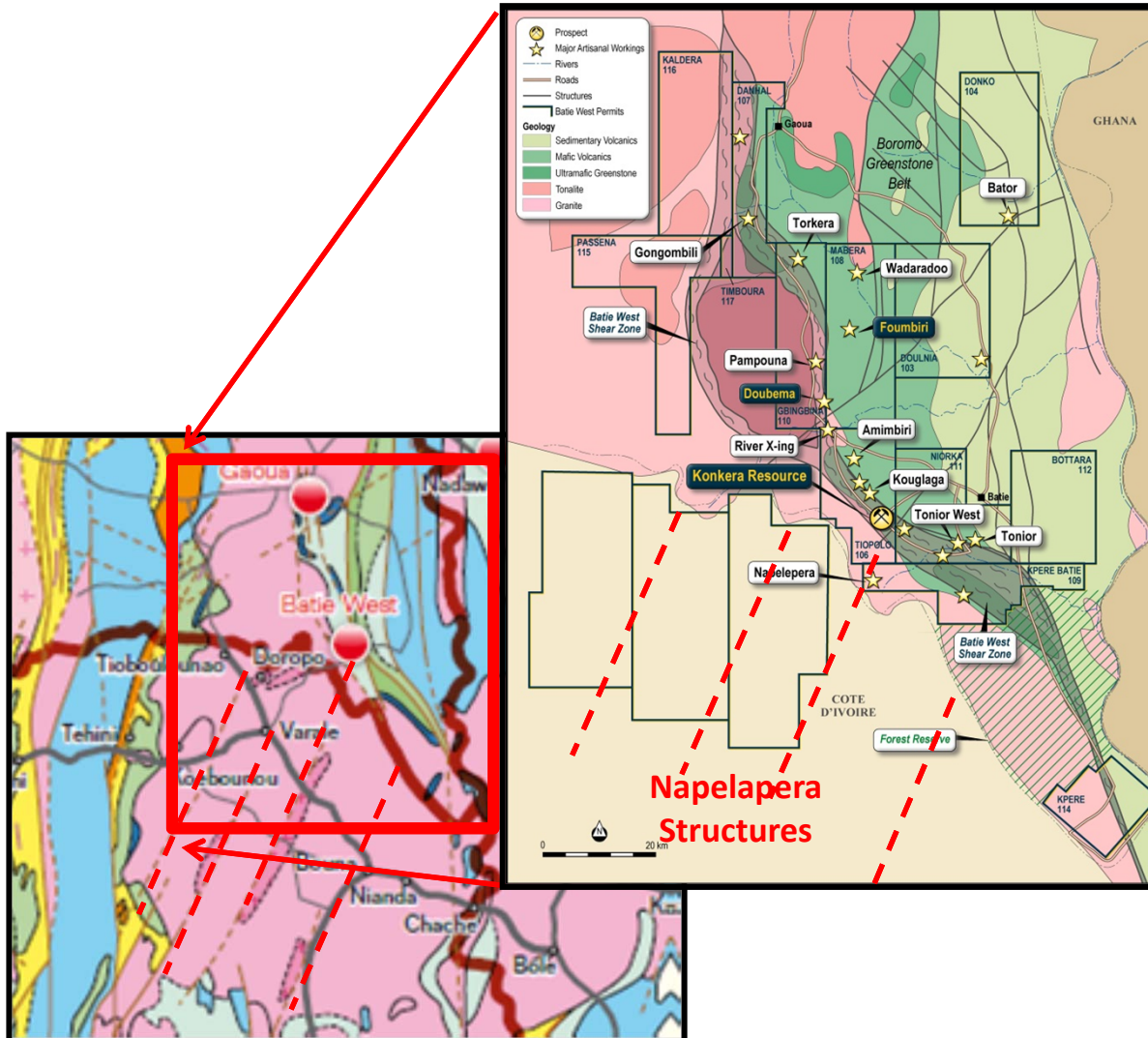
- 7kms from Konkera Resource
- Artisanal workings over 1,600m.
- 3.5km gold anomaly hosted in granodiorite.
- Shallow Aircore highlighted gold anomalism over a strike length of approx. 1000m
- Follow-up RC drill program completed
 - 25m @ 2.6 g/t Au
 - 25m @ 1.6 g/t Au
 - 12m @ 3.0 g/t Au
 - 10m @ 1.9 g/t Au
 - 7m @ 2.5 g/t Au
 - 15m @ 1.7 g/t Au
- Initial Exploration Target* of 355,000 oz @ 1.5g/t Au (1 g/t cut-off)
- Leachwell recoveries - Av. 98.2%
- Flat dipping (25-30 degrees)
- Step-out drill program commenced

* The potential tonnes and grades are conceptual in nature and there is insufficient exploration to estimate a Mineral Resource at this stage and that it is uncertain if further exploration will result in the estimation of a Mineral Resource

2013 Exploration Focus - Napelaperera

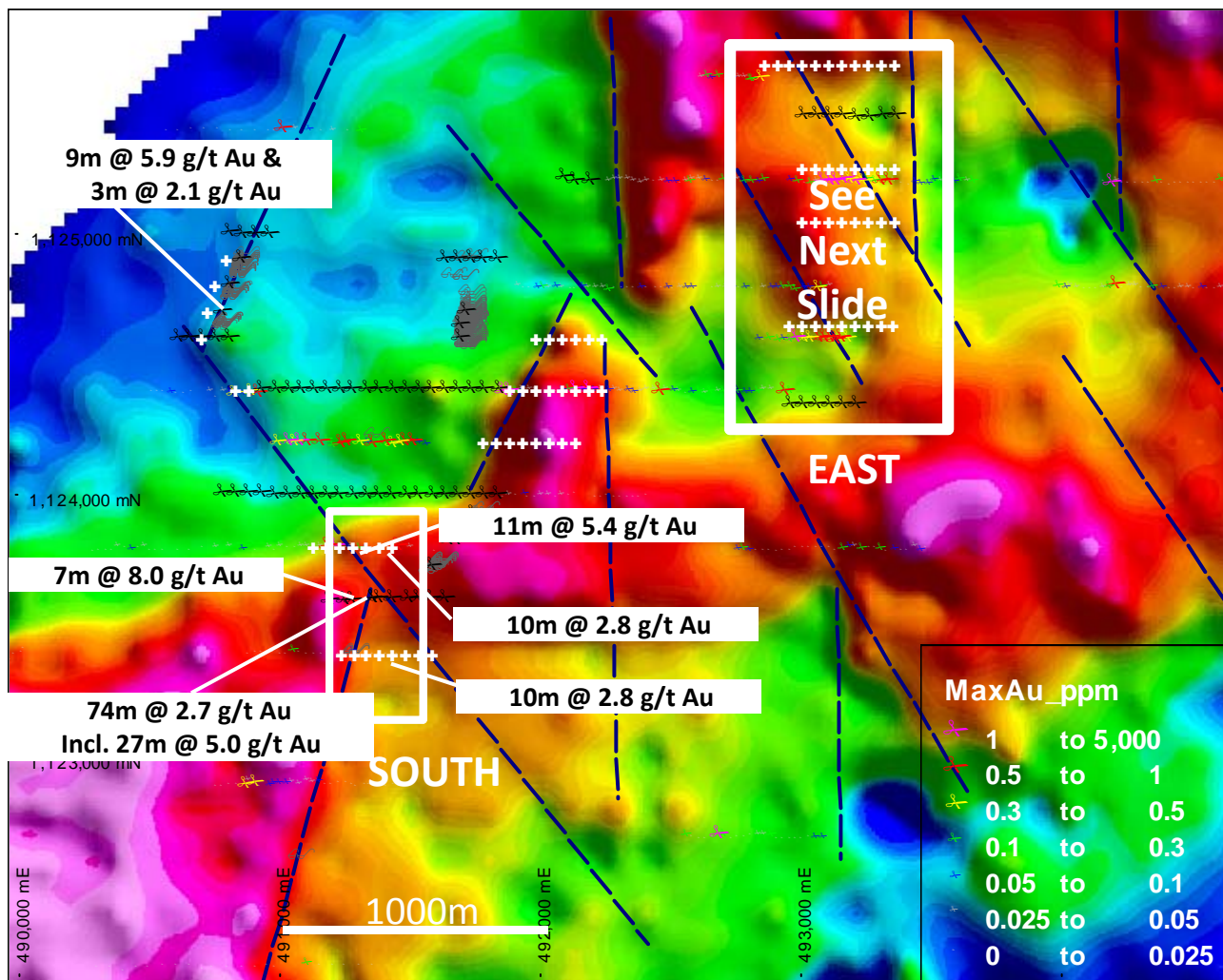
NAPELAPERERA

- 20,000 artisinals over border in Cote d'Ivoire
- Multiple parallel Napelaperera structures continue x10's kms
- Initial Exploration Target* of 355,000 oz @ 1.5g/t Au on first 1500m
- Additional permit applications lodged



* The potential tonnes and grades are conceptual in nature and there is insufficient exploration to estimate a Mineral Resource at this stage and that it is uncertain if further exploration will result in the estimation of a Mineral Resource

2013 Exploration Focus - Wadaradoo

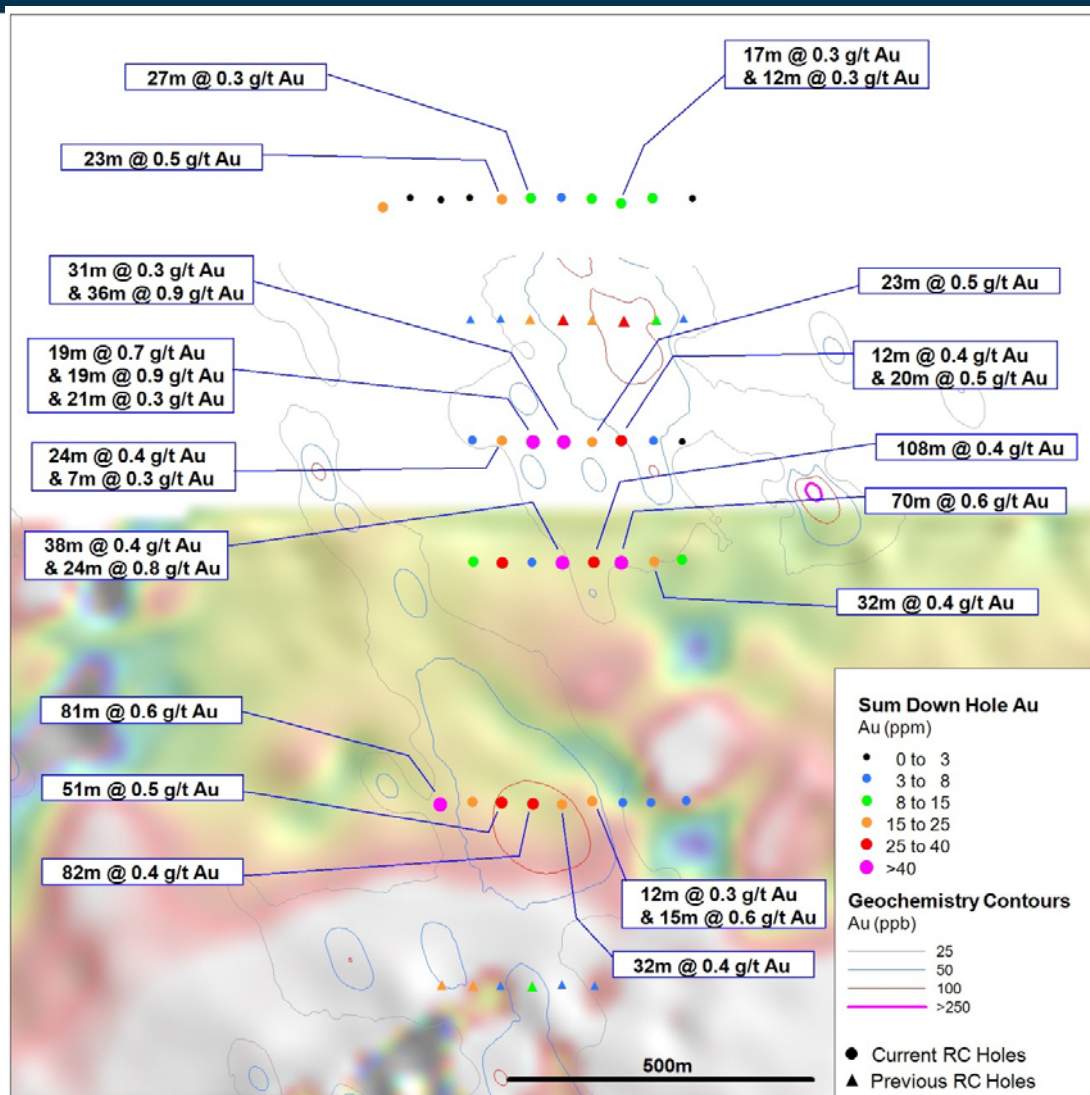


WADARADOO SOUTH

- 35kms from Konkera Resource
- Granodiorite hosted porphyry style gold mineralisation.
- Multiple artisanal workings
- Aircore intercepts include:
 - 4m @ 15.8g/t Au,
 - 4m @ 4.77g/t Au and
 - 4m @ 1.86g/t
- Initial RC drilling highlights:
 - 74m @ 2.7g/t Au
 - 7m @ 8.0g/t Au
- New RC drill results
 - 11m @ 5.4 g/t Au
 - 10m @ 2.8 g/t Au
 - 10m @ 2.8 g/t Au
- Potential Initial Resource
 - Excellent leachwell results
 - ~250,000 oz Au

* The potential tonnes and grades are conceptual in nature and there is insufficient exploration to estimate a Mineral Resource at this stage and that it is uncertain if further exploration will result in the estimation of a Mineral Resource

2013 Exploration Focus - Wadaradoo



WADARADOO EAST

- Granodiorite hosted porphyry style gold mineralisation.
- Potential Heap-leach Target
 - Excellent leachwell results
 - Potential Exploration Target* for ~ 500,000 oz Au
- New RC drill results
 - 81m @ 0.6 g/t Au
 - 70m @ 0.6 g/t Au
 - 51m @ 0.5 g/t Au
 - 36m @ 0.9 g/t Au
 - 24m @ 0.8 g/t Au

* The potential tonnes and grades are conceptual in nature and there is insufficient exploration to estimate a Mineral Resource at this stage and that it is uncertain if further exploration will result in the estimation of a Mineral Resource

Presentation Summary



1. CORPORATE

2. COUNTRY OVERVIEW

3. EXPLORATION

4. PFS & METALLURGY

5. HEALTH, SAFETY, ENVIRONMENT & COMMUNITY

6. CONCLUSIONS

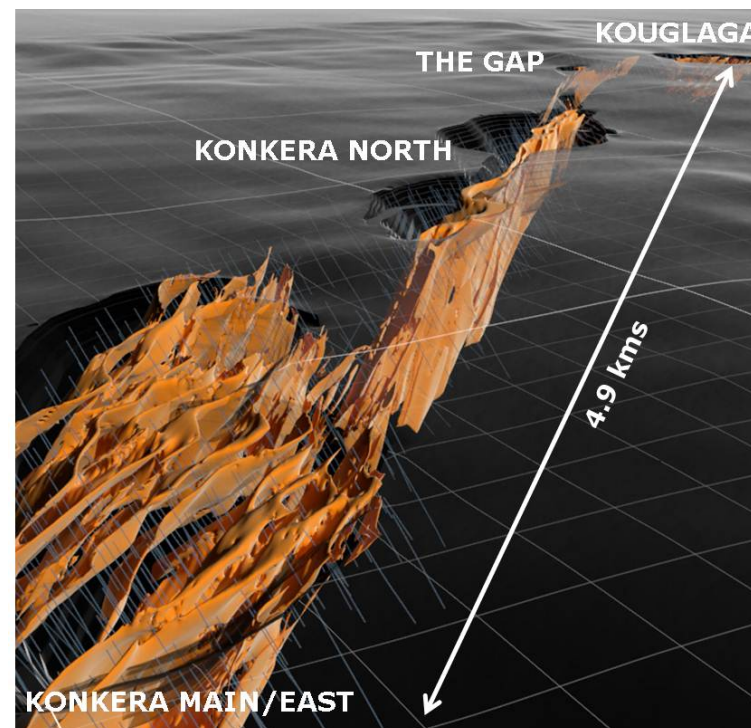
PFS & Metallurgy

- **PFS TARGET STRATEGY:**
 - 3 Mtpa plant - CIL + Float and Regrind
 - 9+ year mine life
 - Average 150,000 oz Au p.a. LOM
 - Initial 3-4 years of free milling material
 - Identify additional 300-400,000 oz Au free milling, mineable ounces:
 - defer float and regrind circuit until years 2 & 3
 - Reduce associated upfront capex



STATUS UPDATE

- Environmental Impact Assessment Study finalised & submitted to Burkina government
- 60 day public hearing announced
- Relocation Action Plan completed and submitted to Burkina Government
- PFS Infill drilling completed December 2012
- Resource update completed March 2013
- Major spends on PFS completed, initial work on DFS including metallurgical test work progressing

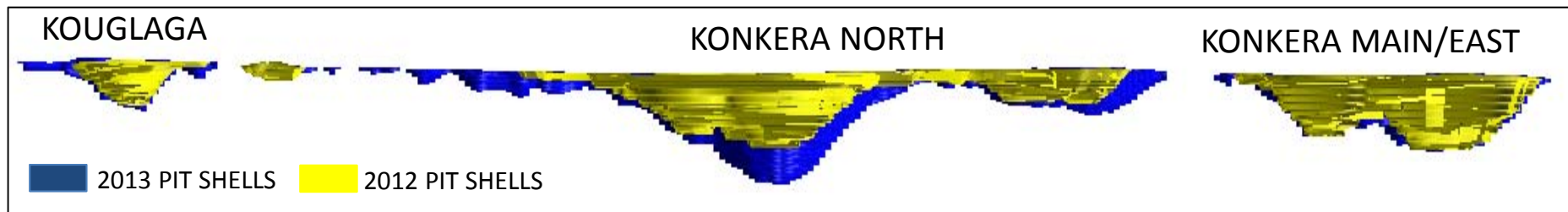


PFS & Metallurgy



- **Current Metallurgical break-up of PFS in-pit resource, and target Metallurgical break-up of targeted in-pit resource base through an additional 300,000 – 400,000 mineable ounces :**

Process	Source	Current Recovery %	LOM Recovery %	Current % of Resource	Target % of Resource
CIL	Konkera, Kouglaga	~ 95%	85%	~23%	~45%
Float & Regrind , CIL	Konkera North	~ 91%		~50%	~36%
Float & Regrind, CIL	Konkera Main/East	~ 71%		~27%	~19%



Konkera Resource Open-Pits Longitudinal Cross-Section (looking East)

Presentation Summary



1. CORPORATE

2. COUNTRY OVERVIEW

3. EXPLORATION

4. PFS & METALLURGY

5. HEALTH, SAFETY, ENVIRONMENT & COMMUNITY

6. CONCLUSIONS



- Ampella endeavours to honour and exceed its social and corporate responsibilities
- Community initiatives & support
 - 34 Schools
 - Drinking water
 - Health services
 - Employment (circa 300)
 - Sports teams
 - Infrastructure (roads, telecommunication etc.)
- “Developed world” safety record
- LTI free for the last 16 months

Presentation Summary



1. CORPORATE

2. COUNTRY OVERVIEW

3. EXPLORATION

4. PFS & METALLURGY

5. HEALTH, SAFETY, ENVIRONMENT & COMMUNITY

6. CONCLUSIONS

CONCLUSIONS



- **AMX is well funded with an experienced Board and Management Team focused on continuing the Company's track record of exploration success**
- **Resource upgrade to 3.25M ounces**
- **PFS well advanced; environmental impact assessment submitted & 60 day public hearing commenced**
- **New significant exploration results from Torkera, Napelapera & Wadaradoo prospects**
- **Exploring for an additional 300,000 – 400,000 free milling mineable ounces from near surface, to enhance the project economics and offset capex spend**
- **On-site preparation facility fully operational**
- **Judicious use of funds**
- **16 Months LTI free**
- **Social and community responsible**



Dr Paul Kitto
Managing Director

Mr Drew Totterdell
General Manager Finance & Corporate Development

Telephone: + 61 8 6142 0980
Facsimile: + 61 8 9200 1879
Email: info@ampella.com.au
Web: ampella.com.au



Registered Office
Australia

Suite 22, 513 Hay Street, Subiaco
Western Australia 6008
Telephone: +61 8 6142 0980
Facsimile: +61 8 9200 1879
Email: info@ampella.com.au



Head Office
Burkina Faso

128 Rue Jindfu
Secteur 13 Zone du Bois
01 BP 1621 Ouagadougou 01
Telephone: +226 5036 8077
Facsimile: +226 5044 7033



AMPPELLA

AMPPELLA MINING LIMITED