



PROJECTS UPDATE
ASX: AOP
2013

AGM PRESENTATION Nov 2013



DISCLAIMER



- This document has been prepared by Apollo Consolidated Ltd (ACN 102 084 917) (Apollo or the Company). No party other than Apollo has authorised or caused the issue of this document, or takes responsibility for, or makes any statements, representations or undertakings in this document.
- **Presentation of general background:** This document contains general background information about Apollo's proposed activities current as at the date of this presentation (Information). It is Information in a summary form only and does not contain all the information necessary to fully evaluate any investment. Further information on Apollo can be obtained from its website; www.apolloconsolidated.com.au
- **Not investment advice:** The Information provided in this presentation is not intended to be relied upon as advice to investors or potential investors and has been prepared without taking into account the recipient's investment objectives, financial circumstances or particular needs. Any investment decision should be made based solely upon appropriate due diligence and, if applicable, upon receipt and careful review of relevant offering documents. Recipients of this presentation are advised to consult their own professional advisers. An investment in any company, including Apollo, is subject to significant risks of loss of income and capital.
- **Financial data:** All dollar values are in Australian dollars (A\$) unless otherwise stated.
- **Future performance:** This presentation contains certain forward-looking statements. The words 'anticipate', 'believe', 'expect', 'project', 'forecast', 'estimate', 'likely', 'intend', 'should', 'could', 'may', 'target', 'plan' and other similar expressions are intended to identify forward-looking statements. Indications of, and guidance on, future earnings and financial position and performance are also forward-looking statements. Such forward-looking statements are not guarantees of future performance and involve known and unknown risks, uncertainties and other factors, many of which are beyond the control of Apollo, and its officers, employees, agents and associates, that may cause actual results to differ materially from those expressed or implied in such statements. Actual results, performance or outcomes may differ materially from any projections and forward-looking statements and the assumptions on which those assumptions are based. You should not place undue reliance on forward-looking statements and neither Apollo nor any of its directors, employees, servants, advisers or agents assume any obligation to update such Information.
- **Risks:** An investment in Apollo's securities is subject to investment and other known and unknown risks, some of which are beyond the control of Apollo and Apollo's directors, employees, advisers or agents. Some of the risks associated with an investment in Apollo are set out in its Prospectus dated January 2012.

COMPANY OVERVIEW

- 1,000 sq km of permits and applications in Cote d'Ivoire for Birimian gold exploration
- Drill ready gold targets at Seguela, Cdl
- Options over 500 sq km Birimian geology in Burkina Faso, gold anomalies
- 100% ownership of advanced Rebecca Gold Project in Western Australia
- Nickel-copper sulphide prospects at Rebecca
- 100% Louisa (Ni), Barlee (Au) projects in WA
- Experienced management with background in gold and nickel exploration and mine development
- **Market valuation close to cash backing – leverage to exploration success**



CAPITAL STRUCTURE AND BOARD



Stock Price \$0.035	Securities (million)	Market Cap (million)	Cash (million)	Enterprise Value (million)
Total Issued	51.00	\$1.78	\$1.75*	\$0
Management Options	25.00	exercise prices ranging from 4.5c to 20c		
Unlisted Options	5.55	exercise price 20c		
Performance Shares	7.50**			

* Cash Balance at Sept 30 2013

** Aspire projects in Cote d'Ivoire. 3.75m shares on >500,000oz; 3.75m shares on >1M oz. All inferred resources @ >1.80g/t Au

EXPERIENCED BOARD

Roger Steinepreis - Chairman. Lawyer and Chairman of Perth based firm, Steinepreis Paganin.

Nick Castleden - Executive Director. Geologist with >20 years of experience in the mineral exploration and development industry. Worked with Australian mining companies including Mt Isa Mines, Perilya Mines, MPI Mines, LionOre and Breakaway Resources in various exploration, geological and management capacities and has experience in project generation and acquisition.

Stephen West – Non-Executive Director. CA with over 18 years financial and corporate experience.

Robert Gherghetta - Non-executive Director. CA with approximately 20 years experience in natural resources, public practice and investment banking.

George Venturas - Non-executive Director. Over 20 years experience in Marketing and Corporate fields



Section Two

WEST AFRICAN GOLD ACTIVITIES



AFRICAN RATIONALE

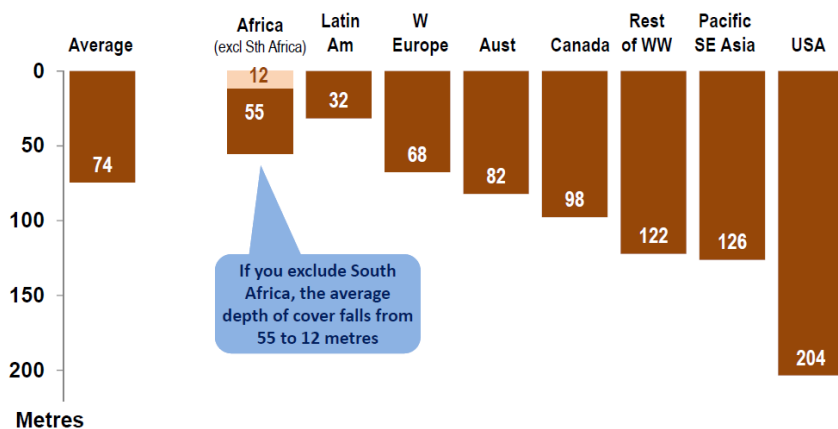
Under-explored relative to competing terrains means...

- Highest discovery rate per exploration dollar invested

Shallowest discoveries in globe means...

- Cost efficient, fast exploration
- Better commerciality

Average depth of cover for discoveries - all metals
Western World: 2003-2012



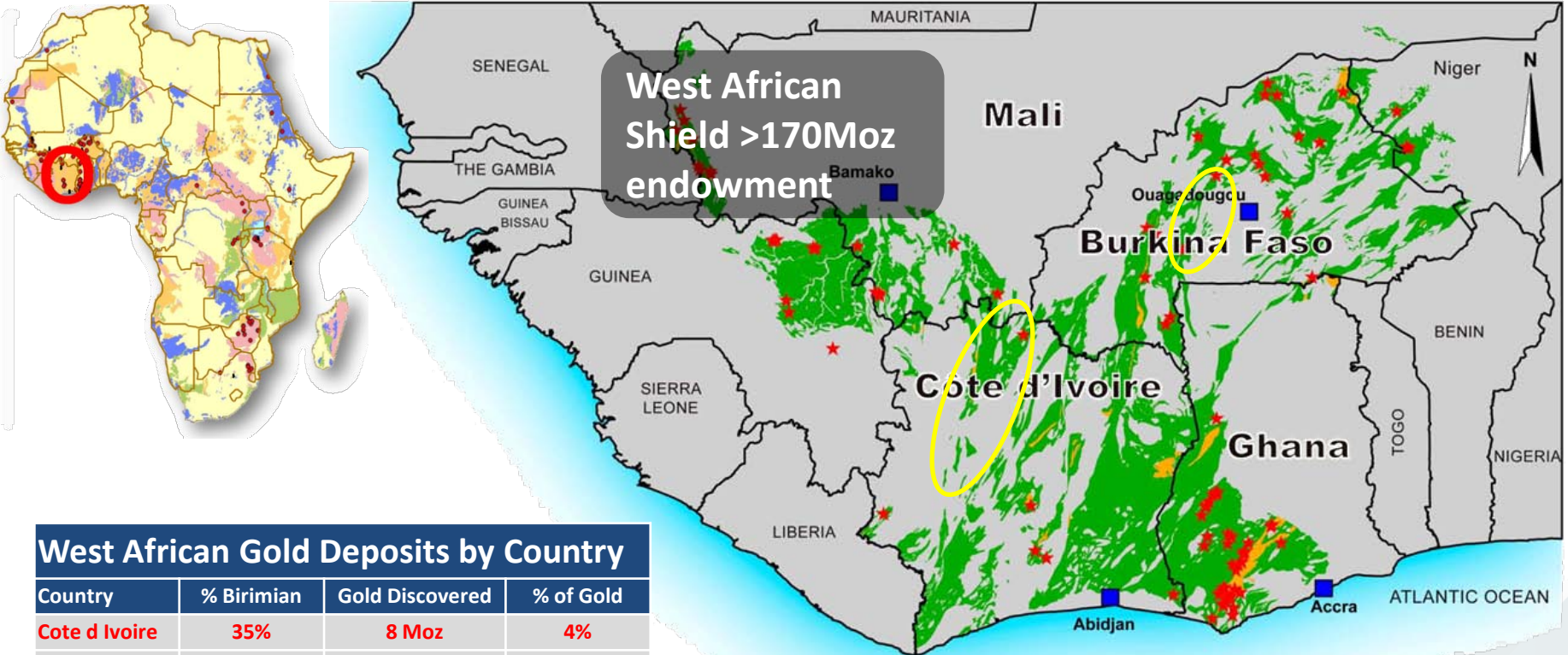
Region	Exploration Spend (2012 \$b)		Number of Discoveries #		Tier 1+2 Discoveries	
Australia	\$12	(10%)	83	(16%)	13	(15%)
Canada	\$22	(18%)	65	(12%)	16	(19%)
USA	\$9	(8%)	20	(4%)	9	(10%)
Latin America	\$28	(23%)	118	(23%)	15	(17%)
Pacific / SE Asia	\$6	(5%)	23	(4%)	2	(3%)
Africa	\$17	(14%)	116	(22%)	19	(22%)
Western Europe	\$3	(3%)	22	(4%)	1	(1%)
China+FSU+EE+RoW	\$22	(19%)	77	(15%)	11	(13%)

Note: Based on deposits >0.1 Moz Au, >5 kt U₃O₈, >10 kt Ni, >0.1 Mt Cu-equiv
Excludes bulk mineral discoveries

Source: MinEx Consulting July 2013

WEST AFRICAN GOLD RATIONALE

...Birimian the best terrain to explore, Cote d'Ivoire the best place to be



West African Gold Deposits by Country

Country	% Birimian	Gold Discovered	% of Gold
Cote d'Ivoire	35%	8 Moz	4%
Burkina Faso	22%	12 Moz	7%
Ghana	19%	110 Moz	62%
Guinea	11%	12 Moz	7%
Mali	10%	33 Moz	19%
Senegal	3%	3 Moz	2%
Total	100%	178 Moz	100%

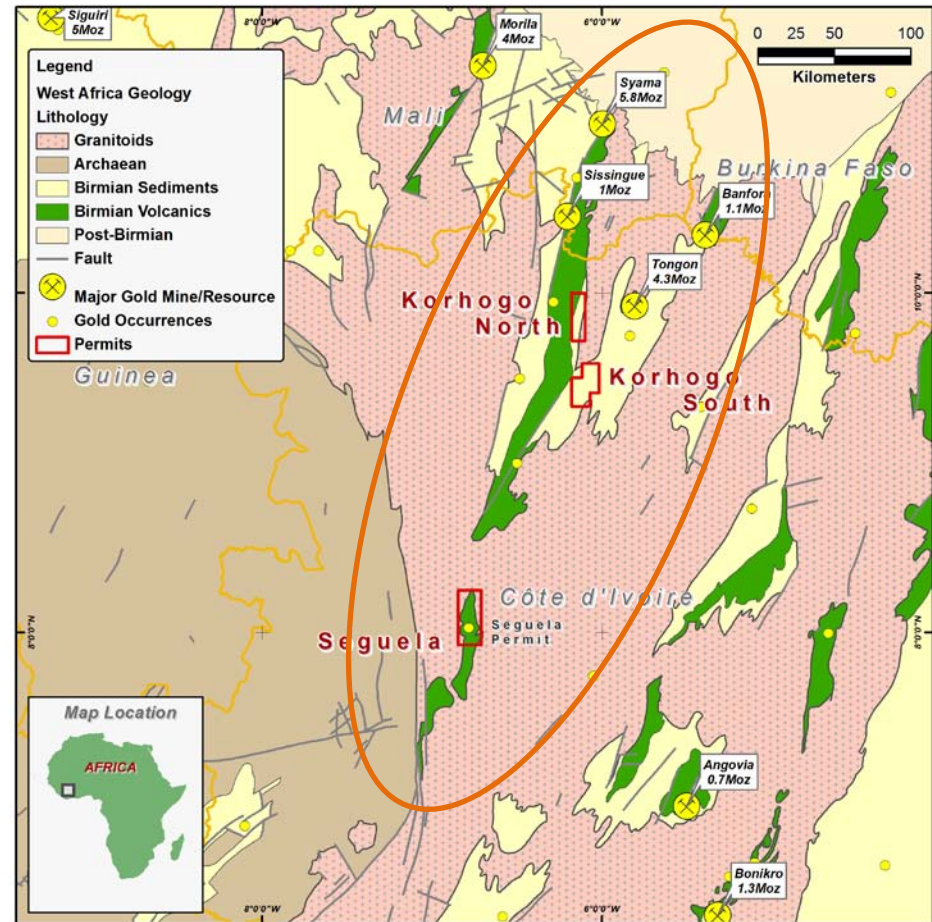
Source: USGS Minerals Commodities 2009

Cote d'Ivoire offers:

- Superior prospectivity
- Entry to FIRST PROGRAM projects
- Good operating environment
- Best infrastructure in region

COTE D'IVOIRE PROJECTS

- **Seguela**, the lead project permit granted Dec 2012
- Seguela title transfer to JV company mid 2013
- **Fieldwork recommenced**
- Seguela has more than 15km of combined soil anomalism, with multiple zones of >200ppb gold
- Zones of strong mineralisation in past trenching
- **Korhogo** project is on the 6Moz Banfora-Tongon structural trend
- Korhogo permits are pending grant
- **NO DRILLING ON EITHER PROJECT**
- **Outstanding potential for first-round drilling success.**



SEQUELA 51%, WITH RIGHTS TO EARN UP TO 90%

THROUGH PARTNERSHIP WITH LOCAL COMPANY

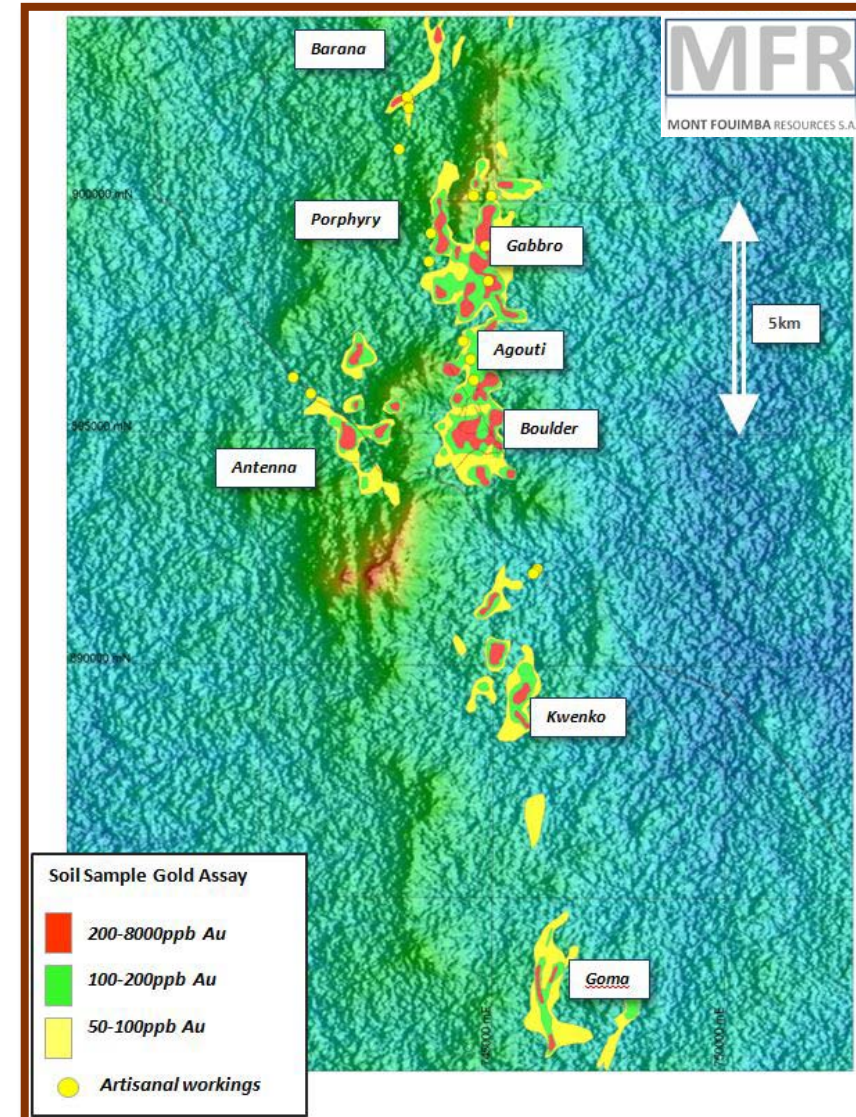


Seguela Permit

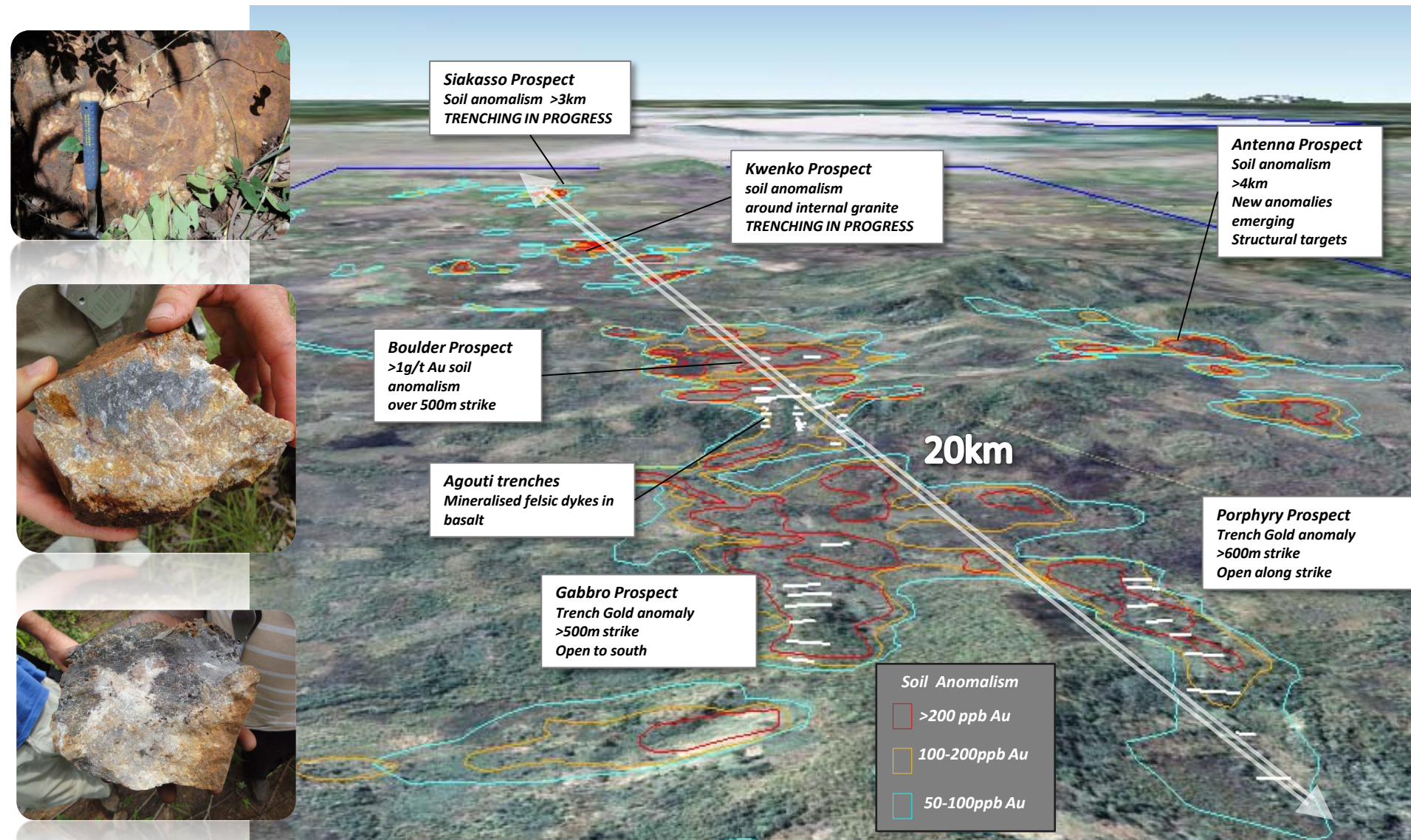
- Multiple soil anomalies over >20km strike
- Strong, high threshold gold values
- Well-defined zones >200ppb Au
- Emerging zones >1g/t Au in soil
- Trenches over three prospects
- Strong bedrock gold zones - open along strike



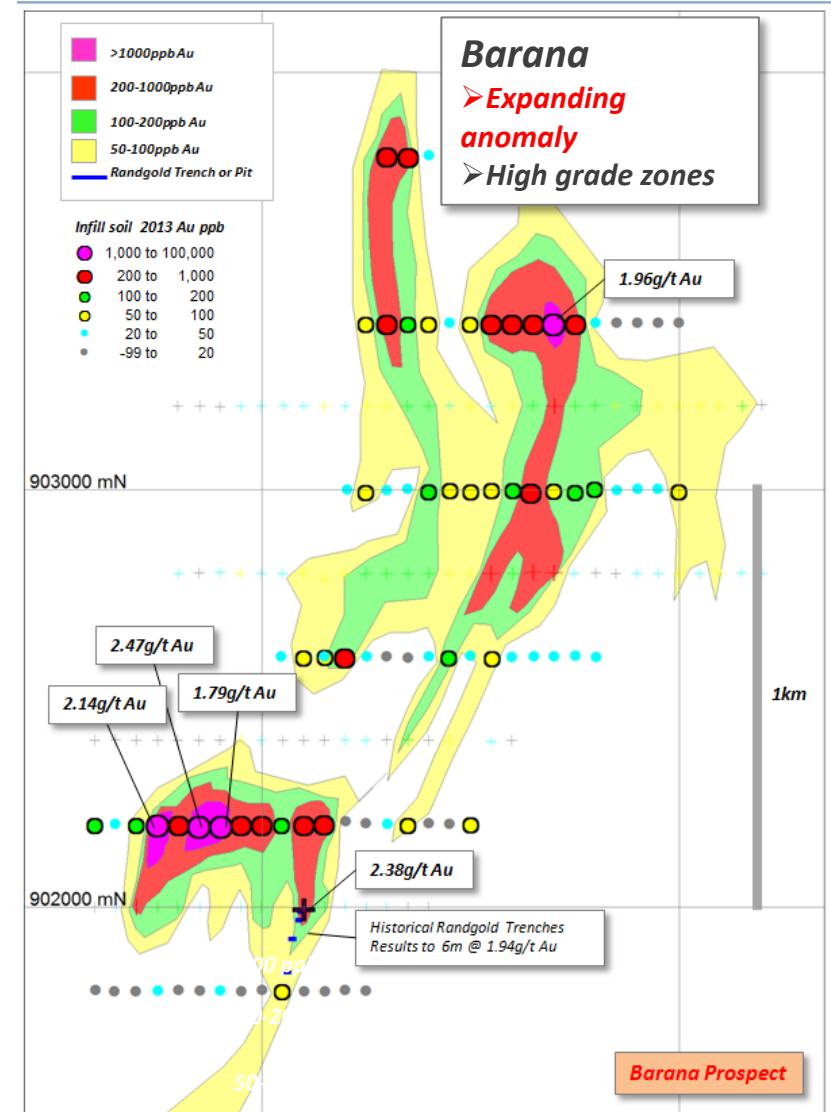
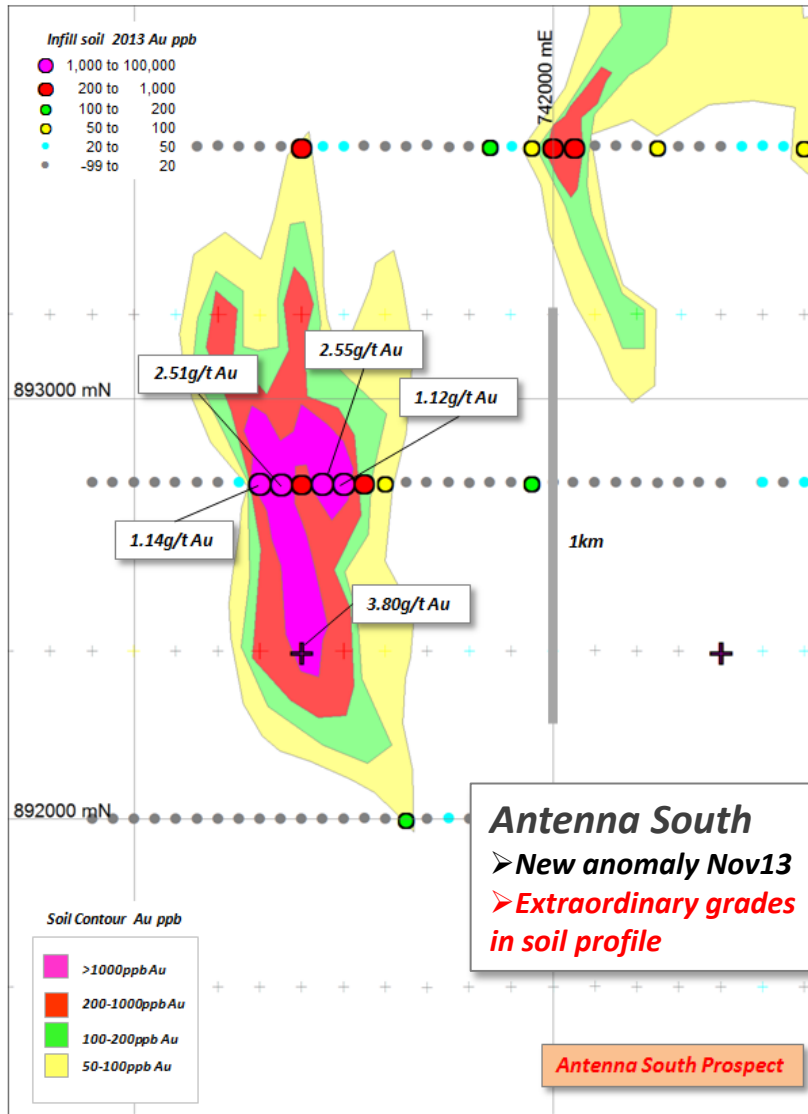
➤ **NO DRILLING**



SEGUELA – SOIL GEOCHEM



SEGUELA – SOIL GEOCHEM

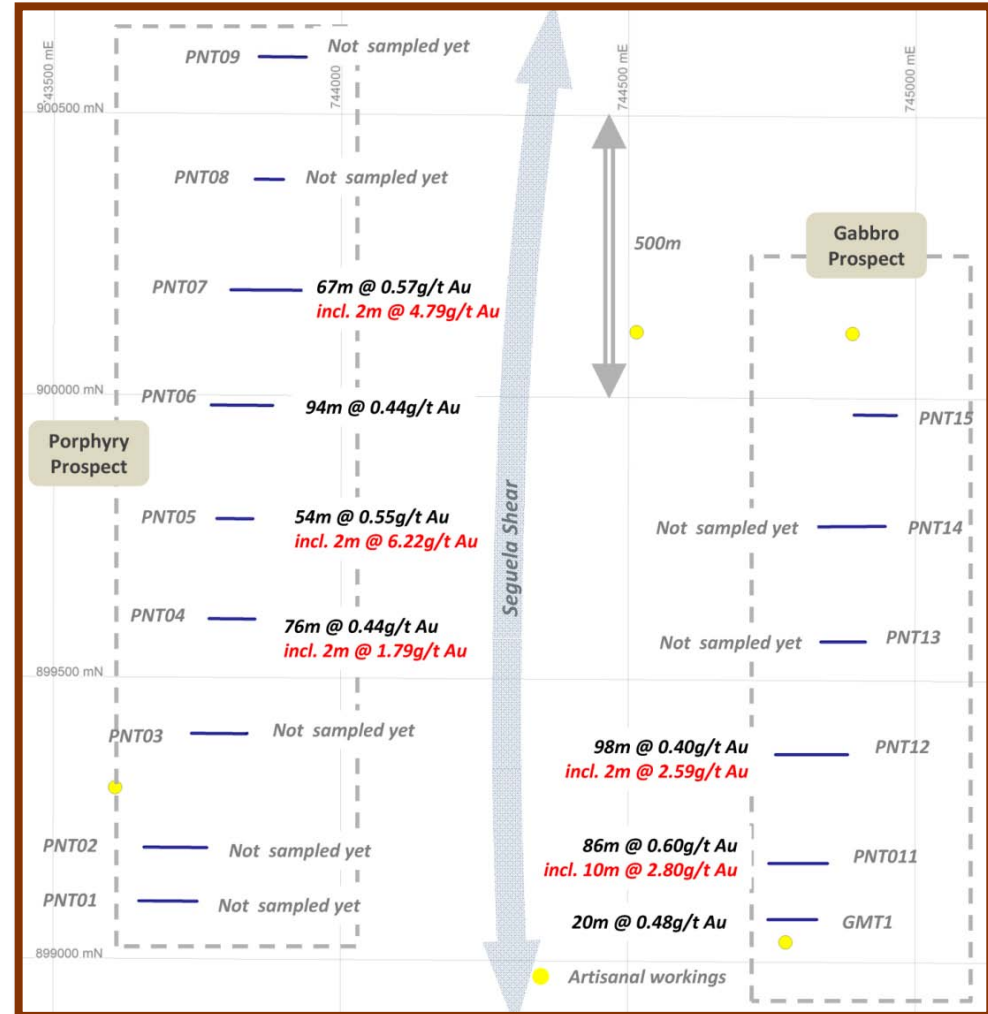


SEGUELA – TRENCHING

Trench results by past explorers

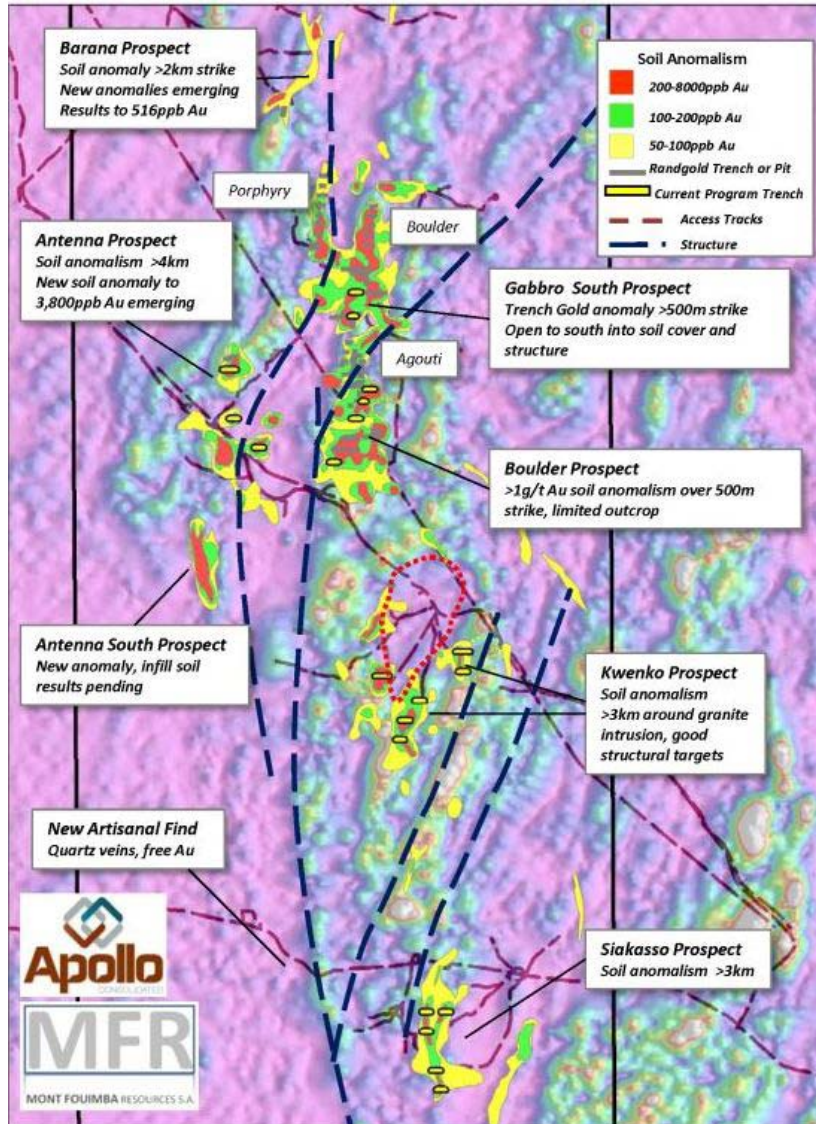
➤ **DRILL READY ZONES**

Prospect Area	Trench ID	From (m)	To (m)	Length (m)	Grade (g/t Au)
Gabbro	PNT 10	66	72	6	3.41
Gabbro	PNT 11	74	94	20	2.65
Gabbro	PNT 15	20	24	4	3.82
Gabbro Sth	PNT 16	12	14	2	82.10
Porphyry	PNT 4	20	42	22	0.97
Porphyry	PNT 4	54	72	18	0.82
Porphyry	PNT 5	30	48	18	1.05
Porphyry	PNT 6	46	78	32	0.70
Porphyry	PNT 6	84	98	14	1.10
Porphyry	PNT 7	84	102	18	1.26
Agouti	TAW 13	40	50	10	2.59
Agouti	TAW 16	2	10	8	1.50
Agouti	TAW 27	4	14	10	2.67
Agouti	TAW 29	20	28	8	1.52
Agouti	TAW 32	0	8	8	2.12
Agouti	TAW 33	0	12	12	1.78



Validation sampling at Gabbro and Porphyry trenches

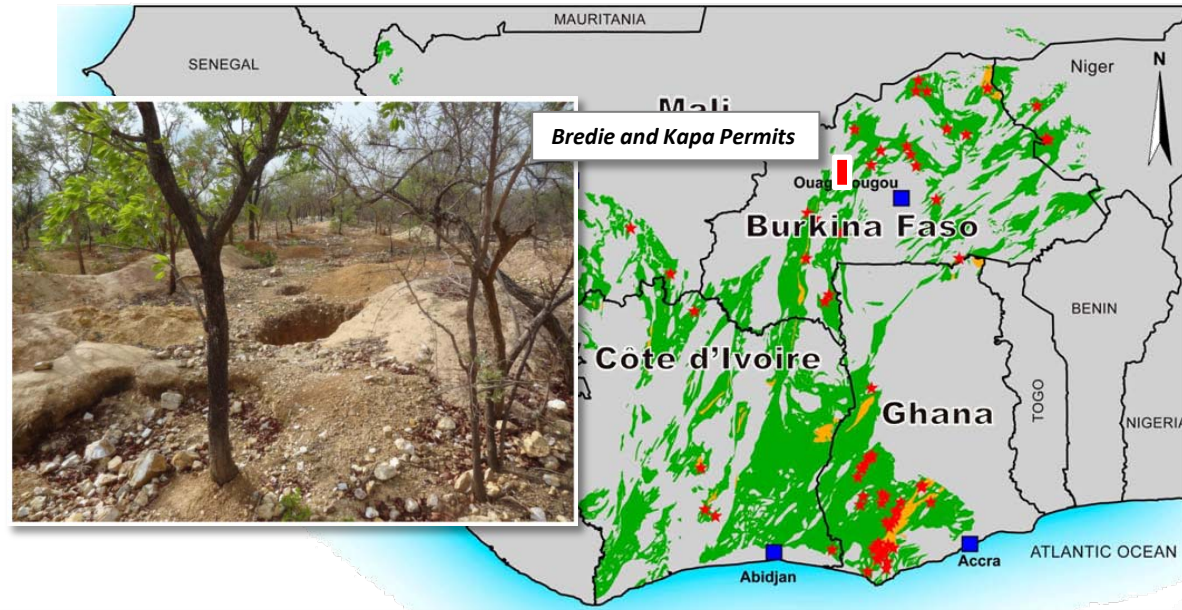
SEGUELA 2013-14 WORK



- Aeromagnetic and radiometric data purchased
- Geological interpretation
- **Up to 4,000m trenching program** underway November 2013
- Testing new soil anomalies and extensions Gabbro and Boulder areas
- Largest trenching program to date
- Combination of excavator and local labour program
- Follow-up Antenna and Barana soil anomalies
- Results Dec 2013 & early 2014
- Preparation for....
- **DEDICATED FIRST STAGE DRILL PROGRAM**

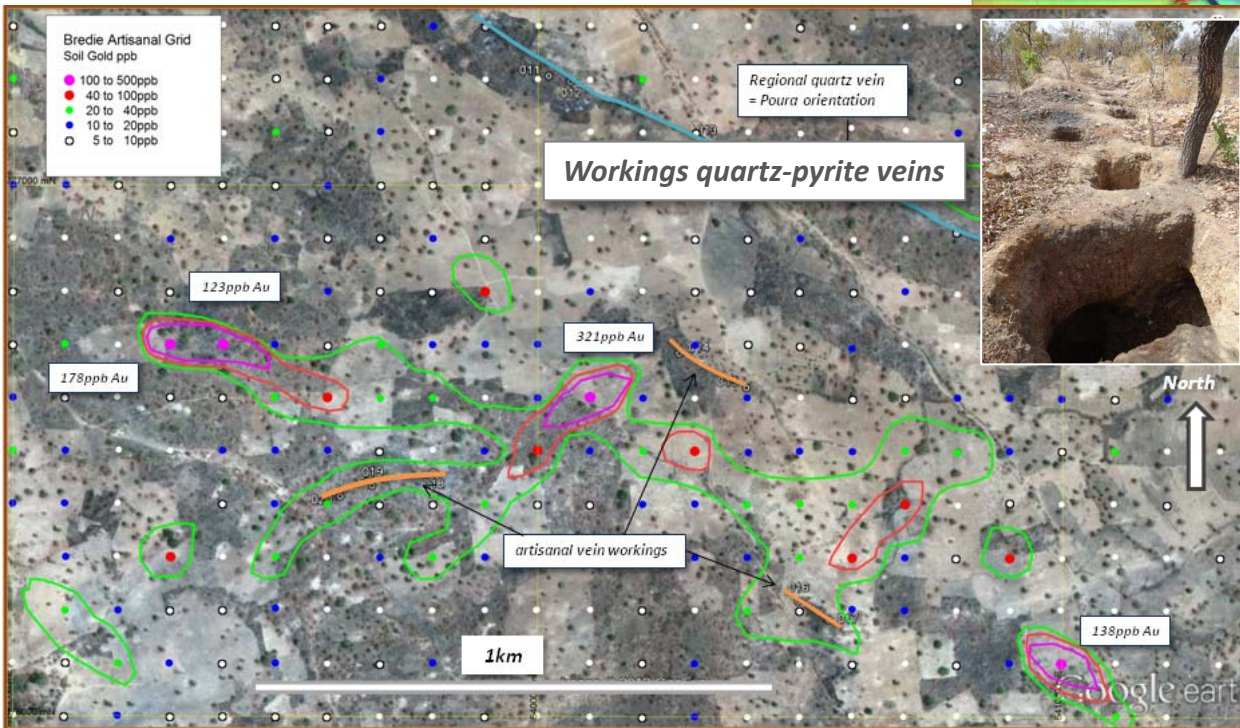
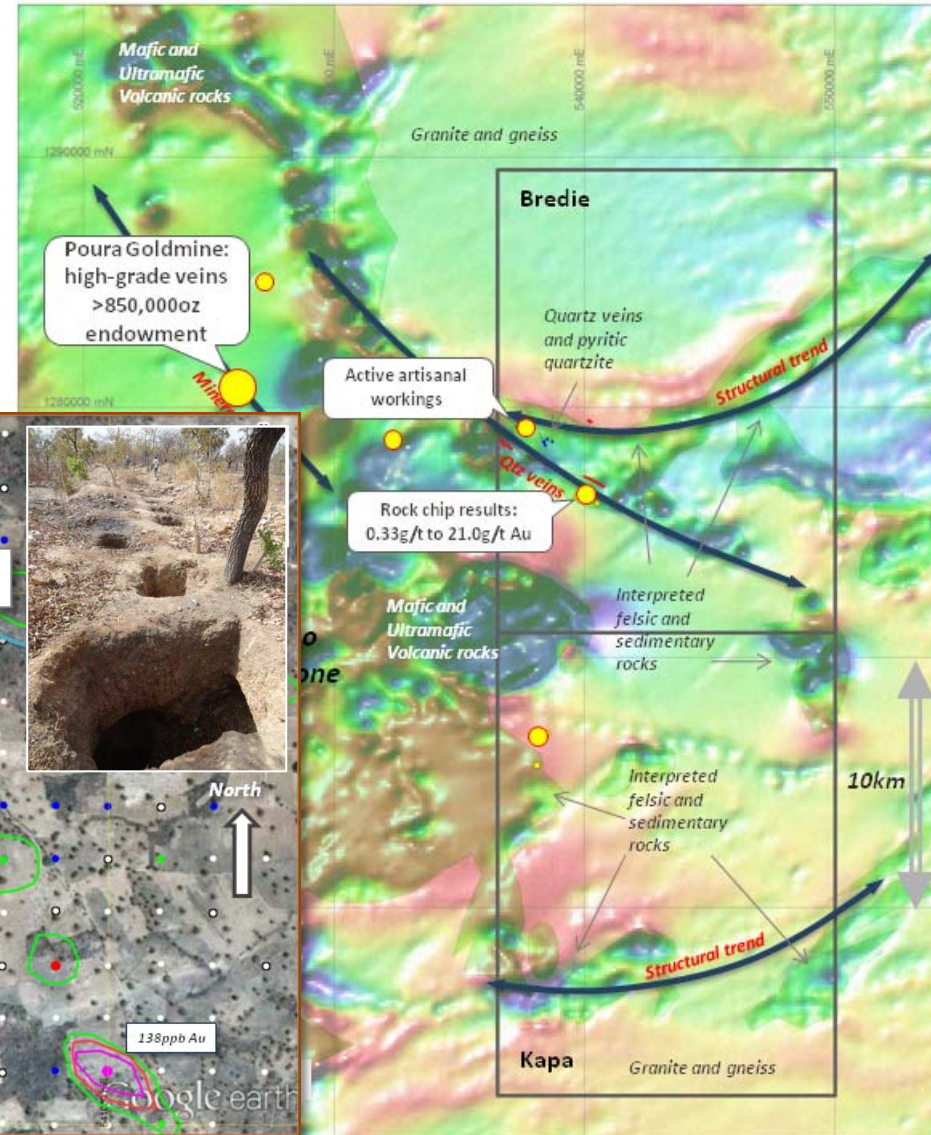
BURKINA FASO - BREDIE & KAPA

- Options to earn 100% 500km **granted exploration permits**
- Immediately east of high grade Poura gold mine
- Poura >850,000oz @ 15g/t Au
- No previous exploration
- Artisanal workings at several locations
- Structural trends in magnetic imagery
- **Soil anomalies defined 2012**



BREDIE AND KAPA

- Soil programs 2012 define anomalous trends
- >1km anomaly adjacent to artisanal workings
- >20ppb regional anomalies
- All warrant RAB drilling
- **Seeking JV partner to progress**



*RCLR161 discovery
at Bombora Aug 2012
42m @ 7.75g/t Au*



Section Three

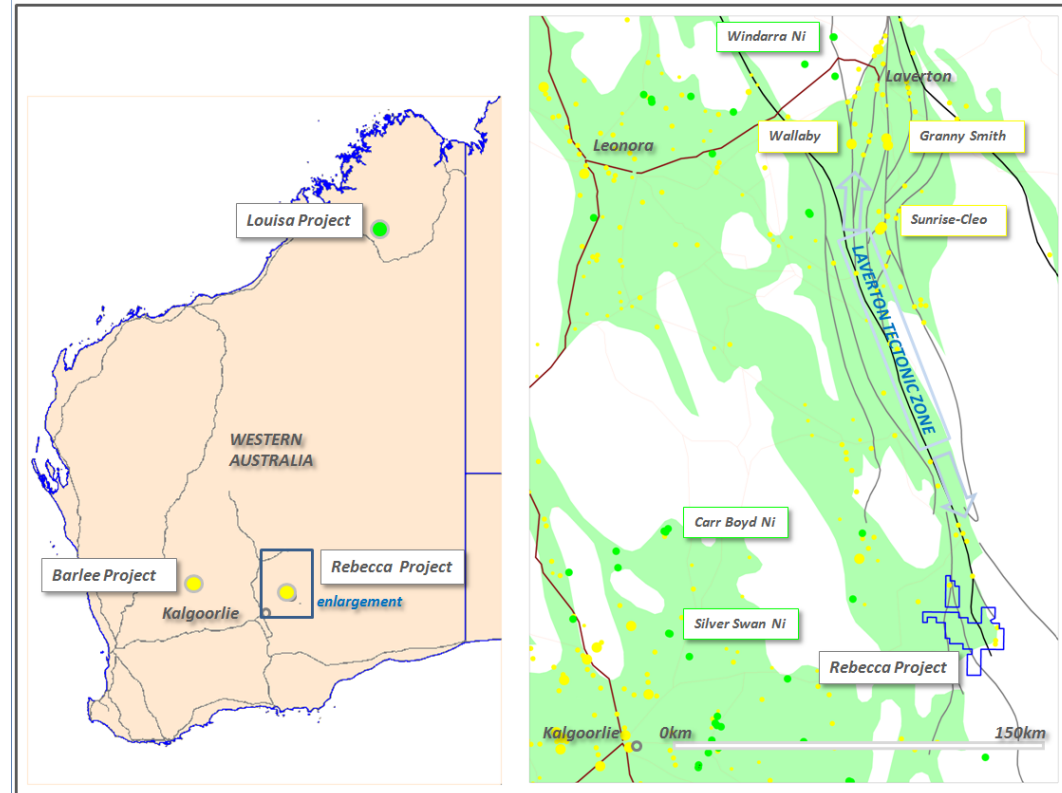


WEST AUSTRALIAN GOLD & NICKEL ACTIVITIES



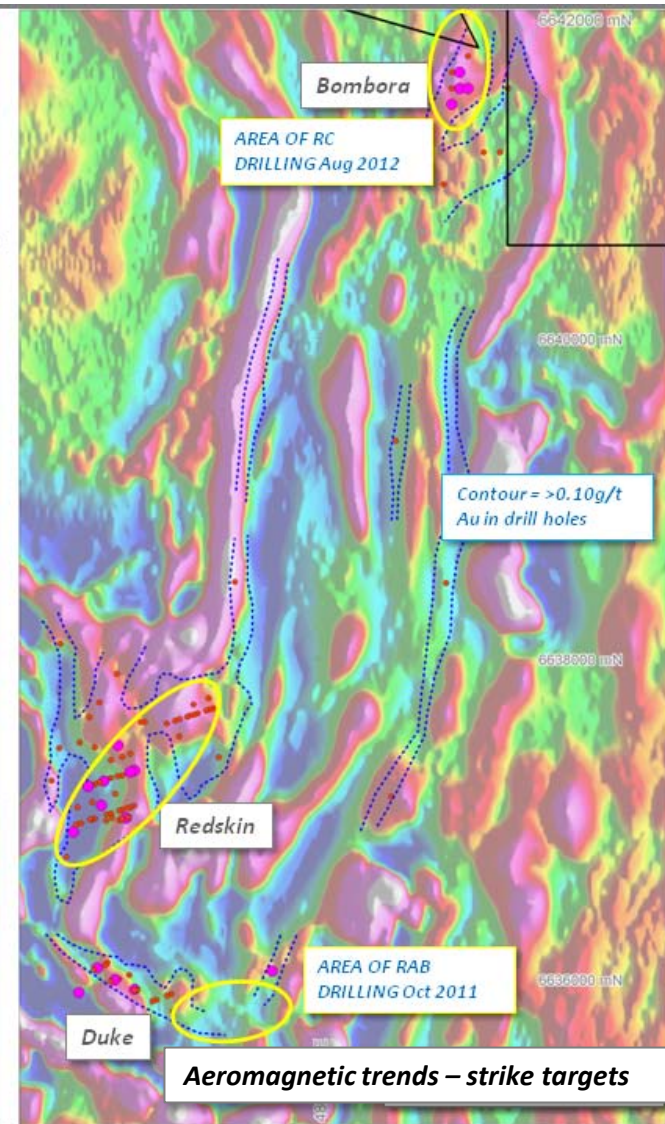
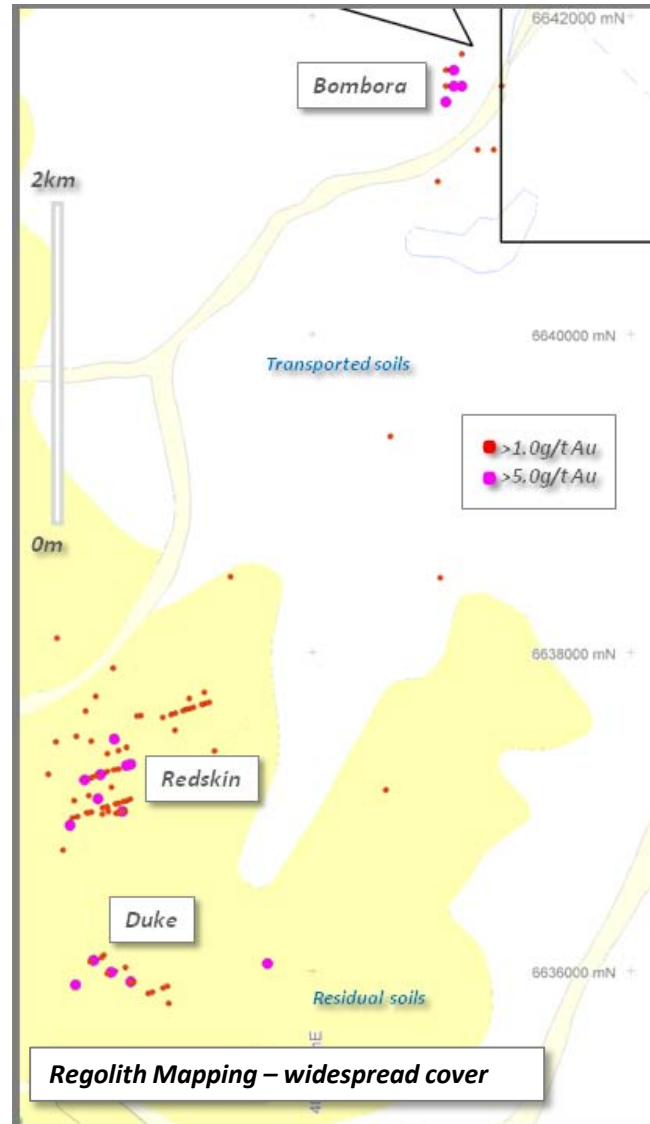
REBECCA PROJECT

- Good structural setting
- ‘Big System’ - widespread bedrock gold anomalism, three advanced prospects
- Disseminated sulphide lodes in gneiss
- Strong gold hits Bombora 2012
- Nickel-copper potential recognised



REBECCA PROJECT

- Three advanced prospects:
- **Redskin**
- **Duke**
- **Bombora**
- Similar styles of mineralisation
- Disseminated sulphide lodes
- Transported soil profiles
- Exploration upside in strike positions



BOMBORA

- 2012 RC Drilling:
- 42m @ 7.75g/t Au

Including:

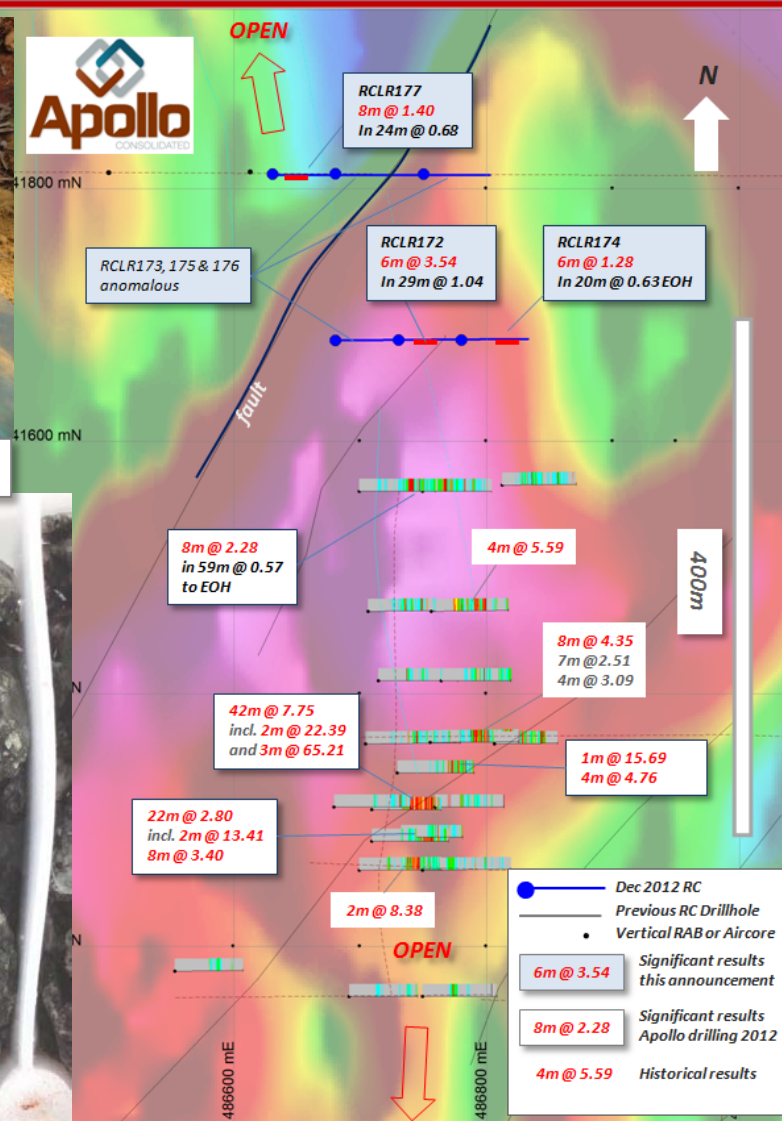
- 2m @ 22.39 and
- 3m @ 65.21

- 22m @ 2.80g/t Au

- Early days but mineralisation open in south-plunging shoots
- Under-drilled area in covered terrain
- Strong disseminated sulphide mineralisation
- **Visible Gold**
- Potential for south-plunging high-grade shoots
- Open north and south



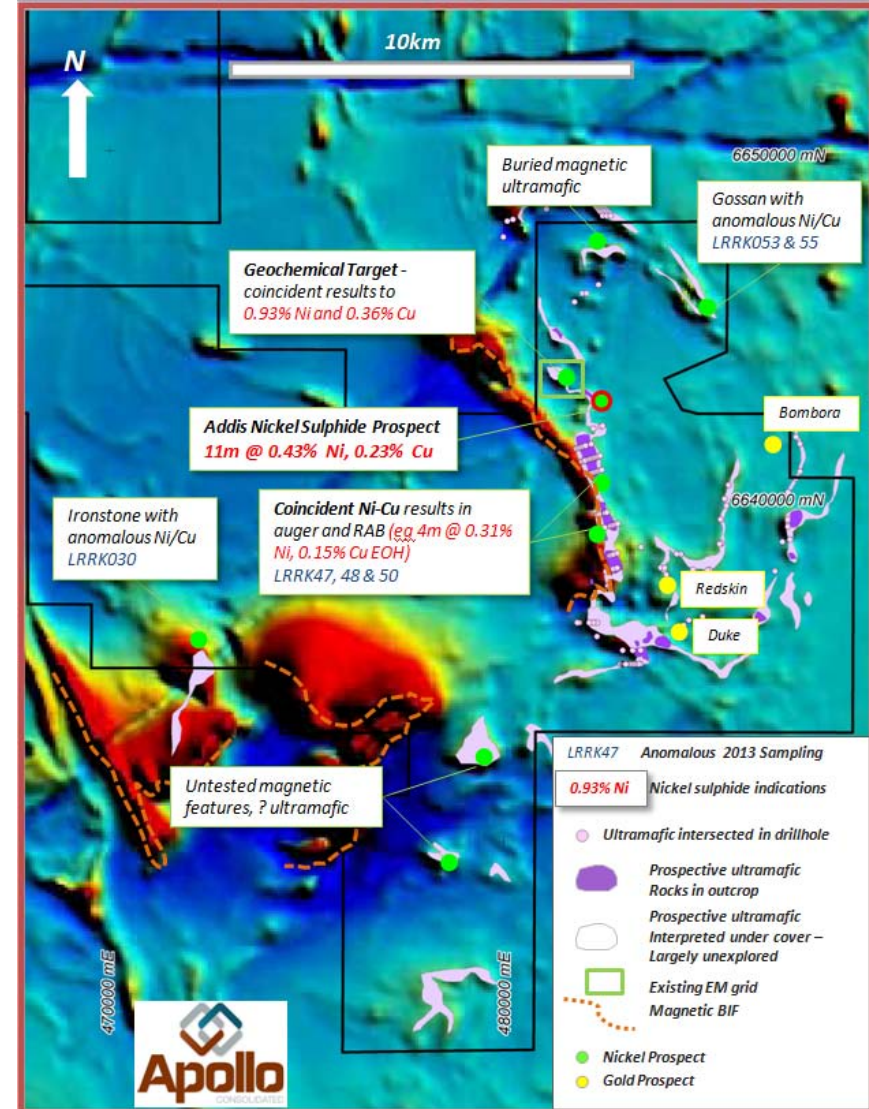
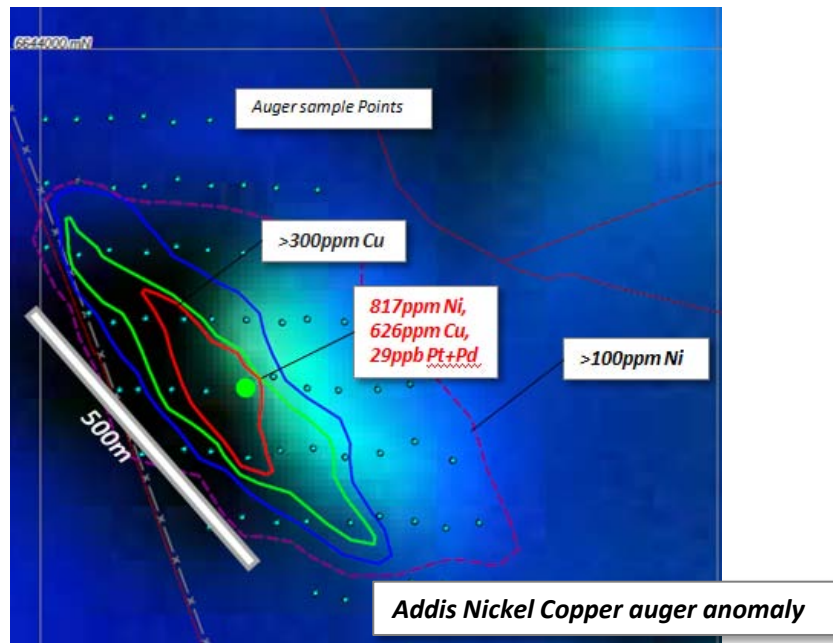
Sulphide rich RC sample in RCLR161



REBECCA NICKEL COPPER TARGETS

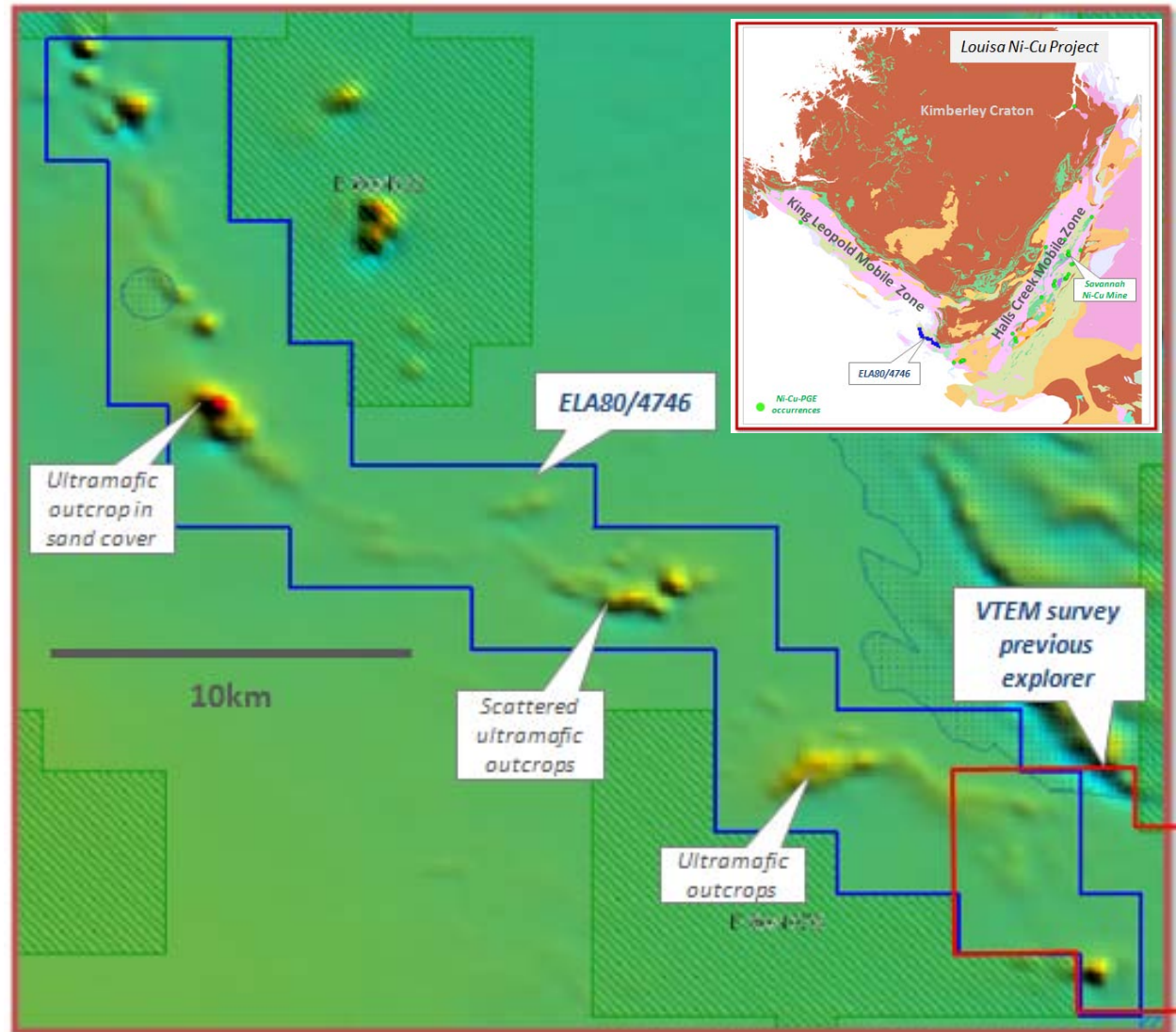
Historic Ni/Cu sulphide intercepts in 1970's drilling at **Addis Prospect**

- Best **11m @ 0.43% Ni, 0.36% Cu**
- Disseminated sulphides logged
- Strong geochemical targets along strike
- Folded ultramafic terrain, extensive soil cover

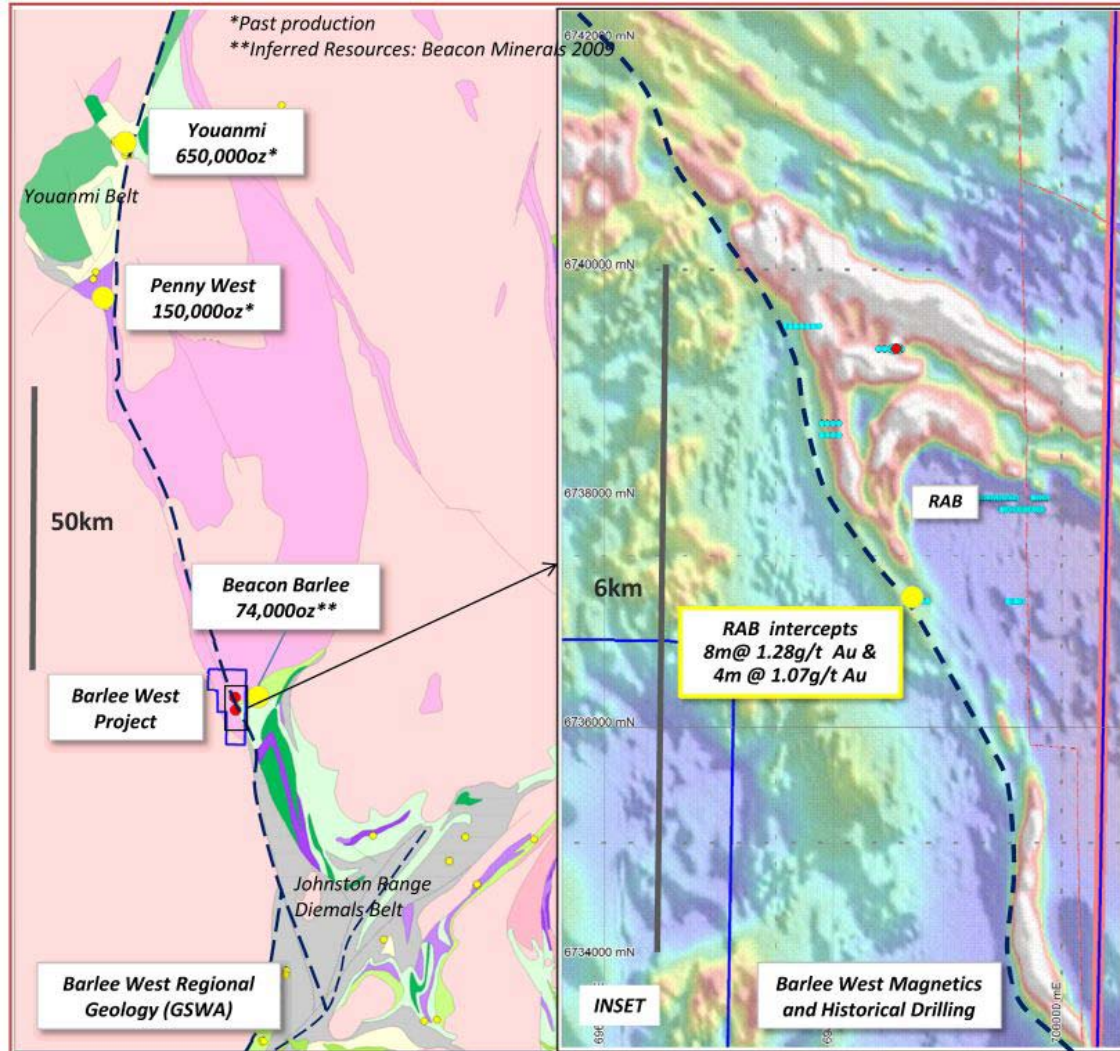


LOUISA NICKEL-COPPER PROJECT

- New 100% Apollo tenure
- In prospective Eastern Kimberley WA mobile belt
- Potential for intrusion-hosted nickel-copper sulphide styles
- Magnetic features = ultramafic intrusions
- Soil-covered targets
- **No previous geophysical surveys over key targets**
- VTEM planned on granting of licence and access agreements



BARLEE GOLD PROJECT



- New 100% Apollo tenure
- In prospective Yilgarn Goldfields
- Structural zone on western margin of greenstone belt
- Soil-covered targets
- Sparse past drilling
- Past drill results to 8m @ 1.28g/t testing soil geochem.
- Strike extensions and flexures unexplored
- Target is modest tonnage high-grade mineralisation

Example - Penny West: approx 150,000oz @ 22.0g/t Au open pit

WORK PROGRAM & NEWS FLOW



- ✓ **Current trenching program at Seguela** – results progressively released to market late 2013 and Q1 2014
- ✓ **Follow-up soil sampling** – Antenna South, results Q1 2014
- ✓ **Korhogo Permits** - progress permitting, soil geochemistry
- ✓ **Burkina** –progress JV or divestment
- ✓ **Rebecca** – Advance nickel sulphide targets, JV interest
- ✓ **Rebecca** – plan next stage Bombora and Duke RC drilling
- ✓ **Louisa** – progress tenure grant and VTEM surveys, JV interest
- ✓ **Barlee** – progress tenure grant and auger geochemistry

WHY INVEST IN AOP?

- ✓ **FIRST CLASS AFRICAN ADDRESS** – in Cote d'Ivoire and Burkina Faso. Seguela Project has exceptional soil and trench geochemistry that remains completely undrilled. Korhogo project is on the 6Moz Banfora-Tongon structural trend.
- ✓ **SIGNIFICANT EXPLORATION UPSIDE** - 1,500 square km combined West African ground position. The lead Seguela project has strong soil anomalies over more than 15km combined strike, with multiple mineralised zones in trenches.
- ✓ **EARLY MOVER** - Côte d'Ivoire has the largest allocation (35%) of Birimian age greenstone rocks of all the countries in the strongly endowed West African region; yet thus far has only contributed 4% of the combined >170Moz West African gold endowment.
- ✓ **EXCELLENT DRILLING RESULTS REBECCA** – strong high-grade intercepts in Bombora programs, indicates potential to build high-grade resources in plunging shoots, open targets along strike.
- ✓ **EXPERIENCED BOARD:** Backed by patient capital and managed by a cost-efficient and experienced board.
- ✓ **BEAR MARKET PRICED** - Apollo has a strong portfolio of assets yet a market value close to cash backing. The Company therefore offers **unarguable leverage to success**.

Nick Castleden, Managing Director
nickc@apolloconsolidated.com.au
+ 61 08 9320 4700



COMPETENT PERSONS STATEMENT

The information in this ASX Release that relates to Exploration Results, Minerals Resources or Ore Reserves, as those terms are as defined in the 2004 Edition of the "Australasian Code for Reporting of Exploration Results, Mineral Resources and Ore Reserve", is based on information compiled by Mr. Nick Castleden who is a director of the Company and a Member of the Australian Institute of Geoscientists.

Mr. Nick Castleden has sufficient experience which is relevant to the style of mineralisation and type of deposit under consideration and to the activity which he is undertaking to qualify as a Competent Person as defined in the 2004 Edition of the "Australasian Code for Reporting of Exploration Results, Mineral Resources and Ore Reserve". Mr. Nick Castleden consents to the inclusion in this ASX Release of the matters based on his information in the form and context in which it appears.