

14 November 2013

The Company Announcements Office  
Australian Securities Exchange Limited

**PRELIMINARY HAUL ROAD ROUTE DEFINED FOR POTENTIAL  
NTIOLA DEVELOPMENT  
MASSIGUI PROJECT, MALI**

**Highlights**

- **Preliminary environmental and social assessment indicates there is no impediment to Ntiola development.**
- **Geography and topography in the Project area is highly conducive to a sustainable and low cost mine and haul road-style development.**
- **Proposed haul road alignment limits social and environmental impacts, and will be cost effective to construct and maintain.**
- **Initial Terms of Reference for the Environmental and Social Impact Assessment (ESIA) prepared for submission to the Malian authorities.**
- **Schedule defines 10 month timeframe for mine permitting once Terms of Reference agreed with government.**

Birimian Gold Limited (ASX:BGS; "Birimian Gold" and "Company") is pleased to announce that preliminary social and environmental assessments conducted by Digby Wells Environmental (Digby Wells) have indicated that a sustainable mine and haul road-style development would be feasible at the Ntiola Prospect, within the Massigui Gold Project in southern Mali.

Digby Wells Environmental is a highly regarded consulting group with extensive experience in West Africa. The group was responsible for the preparation and submission of the environmental and social impact assessment for the Morila Mine.

The Company engaged Digby Wells to undertake the preliminary social and environmental assessment for areas around the potential mine site at Ntiola and along a number of proposed haul road routes to the Morila Processing Plant. The objective of this preliminary sustainability assessment was to identify any potential fatal flaws from an environmental and social point of view prior to the Company undertaking the next stage of evaluation activities at Ntiola.

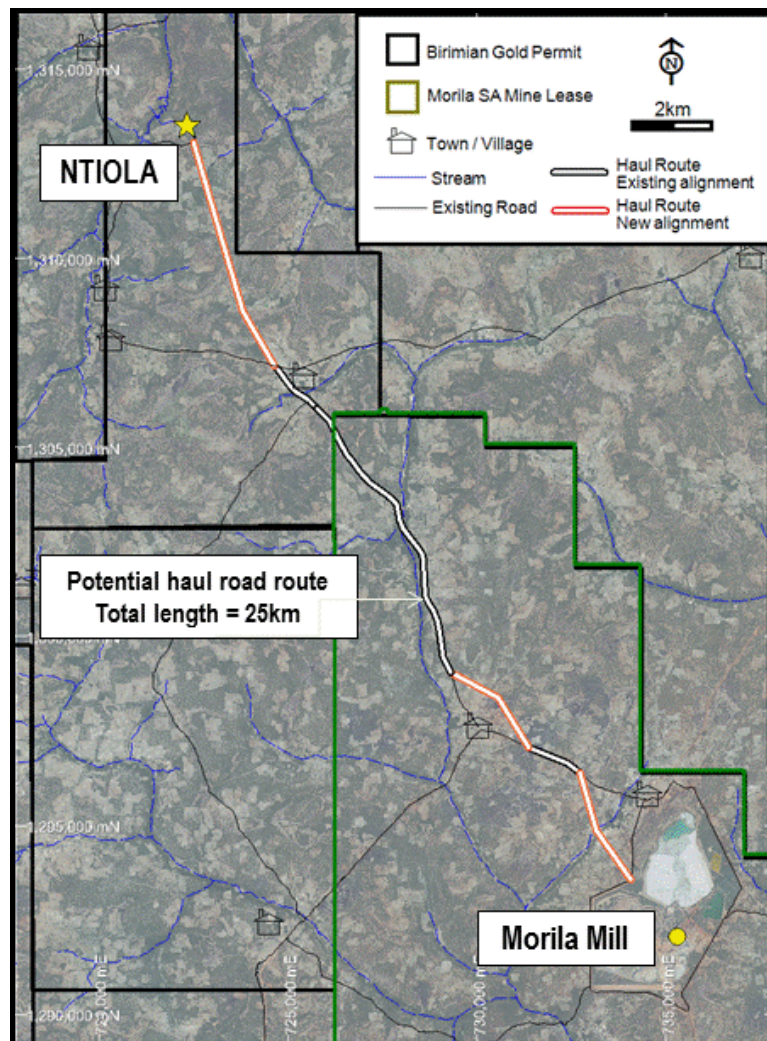


Figure 1. Plan showing the preferred haul road route from Ntiola to the Morila Processing Plant.

### Haul Road Alignment

The Company believes the geographic setting within the Massigui Project is highly conducive to a sustainable and low cost mine and haul road-style development; a view that has been confirmed by the recent studies.

The Massigui region is relatively sparsely populated with some existing basic public road infrastructure. Land use is dominantly agricultural; however large portions of the area are undeveloped open bush and grassland. Landforms are typically flat to undulating.

Determining the social and environmental factors which contribute to the alignment of any potential haul road is a key pre-engineering consideration. A number of haul road route options were assessed from a social and environmental perspective. The options assessed included the use and upgrade of the existing public road network, the establishment of a dedicated haul road, and the combination of these two options.

Digby Wells concluded that, in terms of environmental and social aspects, there is no impediment to the style of mining development contemplated at Ntiola and a combination of upgraded existing road network and establishment of sections of new road to divert around two small villages is the preferred haulage route (Figure 1).

The Company considers the proposed route to be very attractive as it limits social and environmental impacts, in addition to being the most direct (i.e. shortest length) and therefore most cost effective route to construct and maintain.

### **Forward Plan**

Digby Wells has prepared a Terms of Reference for the Environmental and Social Impact Assessment (ESIA) for submission to the Malian authorities. The Company will now engage with Government to refine these Terms of Reference and formulate an appropriate plan for completion of necessary base line studies and submission of the project ESIA.

The ESIA and mine permitting process is schedule for completion within ten months of finalising the initial government consultation process.

### **Massigui Project**

Birimian Gold continues to aggressively explore the Massigui Project with a view to defining multiple gold ore sources which will be amenable to processing at the Morila Gold Mine and treatment plant.

The Company is continuing its technical evaluations at the Ntiola Deposit and is currently prioritizing drill targets and formulating its exploration program over the Massigui Project area for the coming dry season. It is envisaged that the work program will include follow up RC drilling at advanced prospects and detailed target definition drilling at a large number of currently defined early stage prospects.

Yours sincerely

A handwritten signature in blue ink, appearing to read 'Kevin Joyce'.

Kevin Joyce

Managing Director

Birimian Gold Limited