



**Coziron Resources Limited**

ABN: 91 112 866 869  
Level 24, 44 St George's Terrace  
Perth Western Australia 6000  
PO Box Z5183  
Perth WA 6831  
**Phone:** +61 8 6211 5099  
**Facsimile:** +61 8 9218 8875  
**Website:** www.coziron.com

The Company Announcements Office  
ASX Limited Via E Lodgement

8 October 2013

**COZIRON RESOURCES LIMITED ("CZR") REACHES AGREEMENT TO ACQUIRE  
ADDITIONAL CREASY GROUP IRON ORE LAND PACKAGE**

---

**HIGHLIGHTS**

- **CZR executes contract to acquire 70% of significant 192.2km<sup>2</sup> land package from Creasy Group entity (Croydon Gold Pty Ltd);**
- **The land package provides CZR with exposure to another unit which is known to host large scale iron ore deposits in the West Pilbara, with 9km's of priority targets currently identified;**
- **The Shepherds Well Project is a Northerly extension of CZR's current Yarraloola project;**
- **Strategically located near existing and proposed infrastructure such as the Great Northern Highway and approximately 25km<sup>2</sup> from the new multiuser port developing at Cape Preston East;**
- **Agreement reached with Iron Ore Holdings Limited (ASX:IOH) to enable proposed infrastructure to intersect the land package and close proximity (Approximately 10km<sup>2</sup>) to CITC Pacific Mining – Sino Iron mine**

# **SHEPHERDS WELL PROJECT SUMMARY**

## **Location and Access**

The Shepherds Well Project (“Shepherds Well”) is a 60 block (192.2km<sup>2</sup>) exploration license E08/2361 (the “Tenement”) located 65 km<sup>2</sup> southwest of Karratha (Fig 1). The Tenement is serviced by bitumen road access from the Great Northern Highway, is contiguous with the CZR Yarraloola Iron-ore project and is located only 25-50km from the new public access port developing at Cape Preston East (Fig 1).

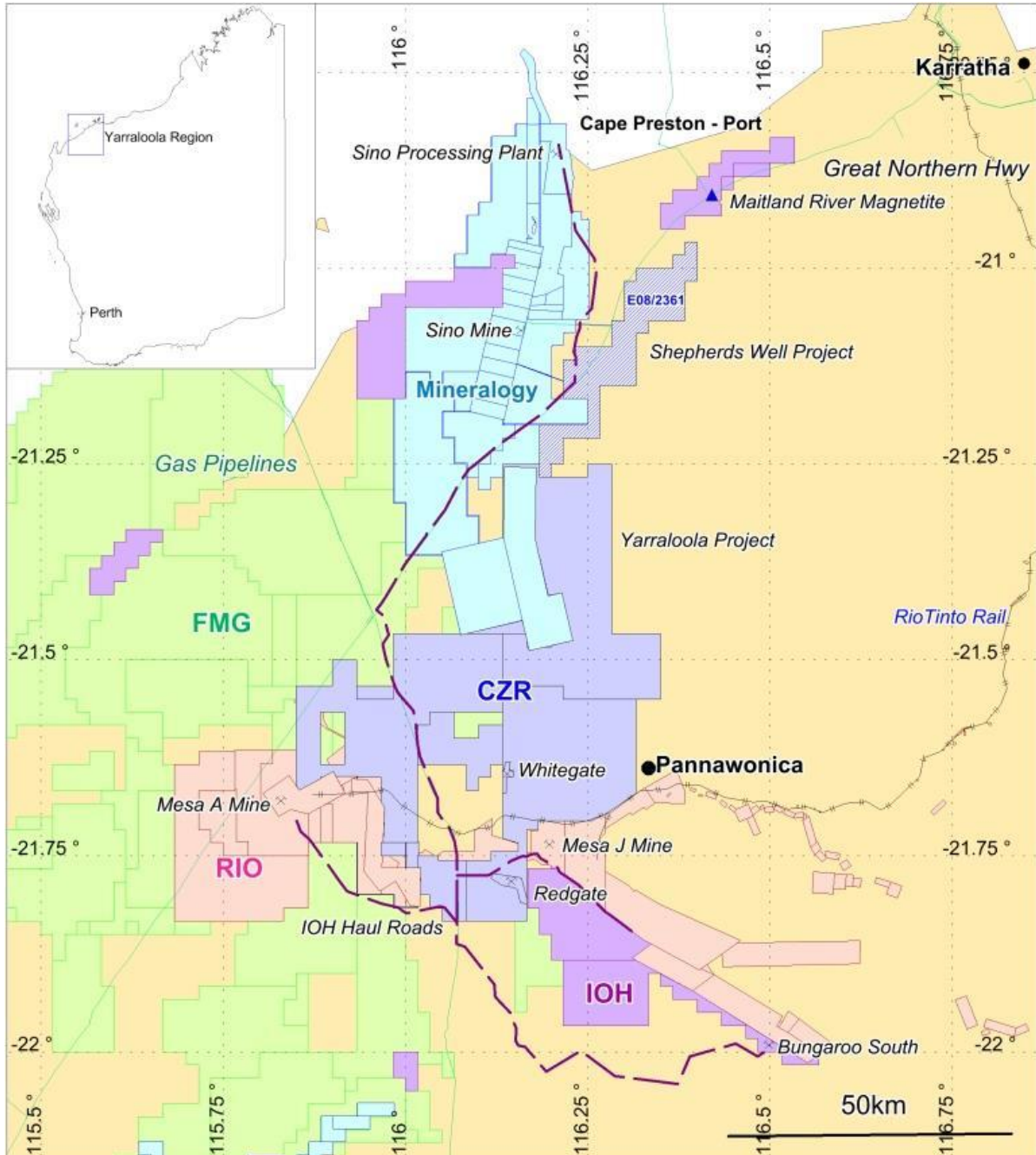


Fig 1 Location of the Shepherds Well Project (E08/2361) in relation to the other major iron-ore projects in the West Pilbara of Western Australia and the new multi-user port development at Cape Preston East.

## Prospectivity

The Shepherds Well Iron-Ore project complements the Yarraloola Iron-Ore project by the addition of an area with the potential to host iron-ore mineralization in the Cleaverville Terrain. The Cleaverville consists of a sequence of ocean-floor basalts and associated sediments that are part of an accretionary domain that pre-dates the formation of the Hamersley Basin. There are iron-formations up to 500m thick interbedded in the Cleaverville and base-metal (Cu-Au-Pb-Zn) occurrences attributed to a sea-floor volcanogenic origin.

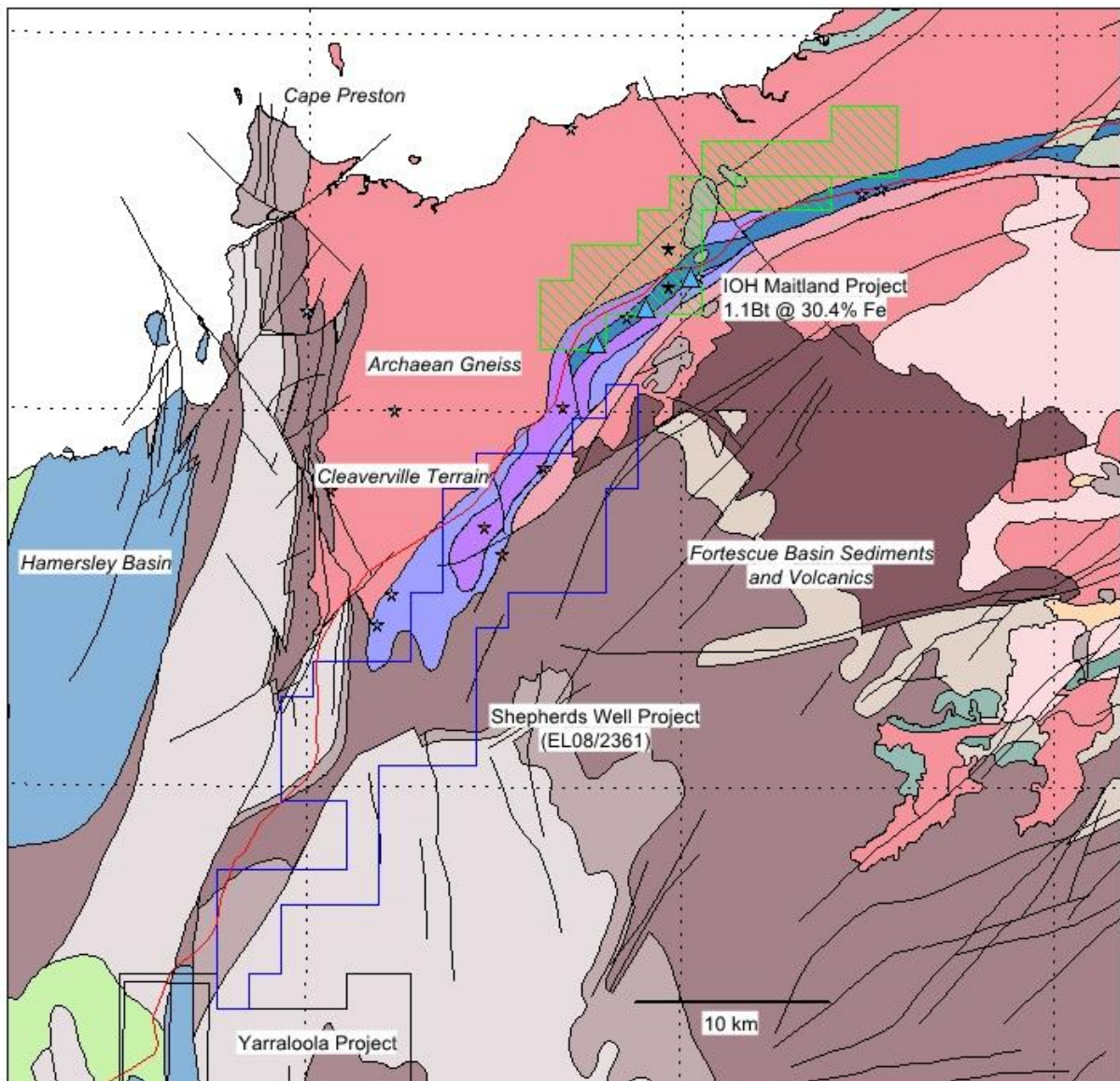


Fig 2. Regional geological setting of Shepherds Well showing the distribution of the iron-ore and base-metal prospective Cleaverville Terrain in the West Pilbara, Western Australia. Coloured stars representing Cu-Pb occurrences. Blue triangles are the location of the Maitland Magnetite mineralization.

In the Pilbara region, the Cleaverville hosts direct-shipping iron-ore deposits at localities such as the BHP-Billiton operated Yarrie Mine and Pardoo deposits mined by Atlas Iron. There are also large-scale magnetite resources in the extension of the Cleaverville to the north-east from Shepherds Well that include the following.



Company	Deposit	Resource
China Metallurgical Group Corp	Cape Lambert	1.6Bt @ 31.2%Fe
Iron-Ore Holdings Ltd	Maitland	1.1Bt @ 30.4%Fe
Red River Resources Ltd	Miaree	286Mt @ 31.3%Fe

### Significance of Shepherds Well to Coziron Resources Ltd

Shepherds Well provides CZR with exposure to another unit which is known to host large-scale iron-ore deposits in the West Pilbara. The Tenement is strategically located adjacent to the North-west Coastal Highway and within 50km of the new multi-user port at Cape Preston East. An assessment of the current publically available airborne magnetic data highlights some 9km<sup>2</sup> of E08/2361 of priority targets up to 500m wide in the Northern portion of E08/2361 for mapping, rock-chip sampling and drilling (Fig 3). In addition, the Tenement has prospectivity for copper-gold and associated base-metal mineralization which can undergo low-cost, early stage evaluation using soil and rock-chip sampling.

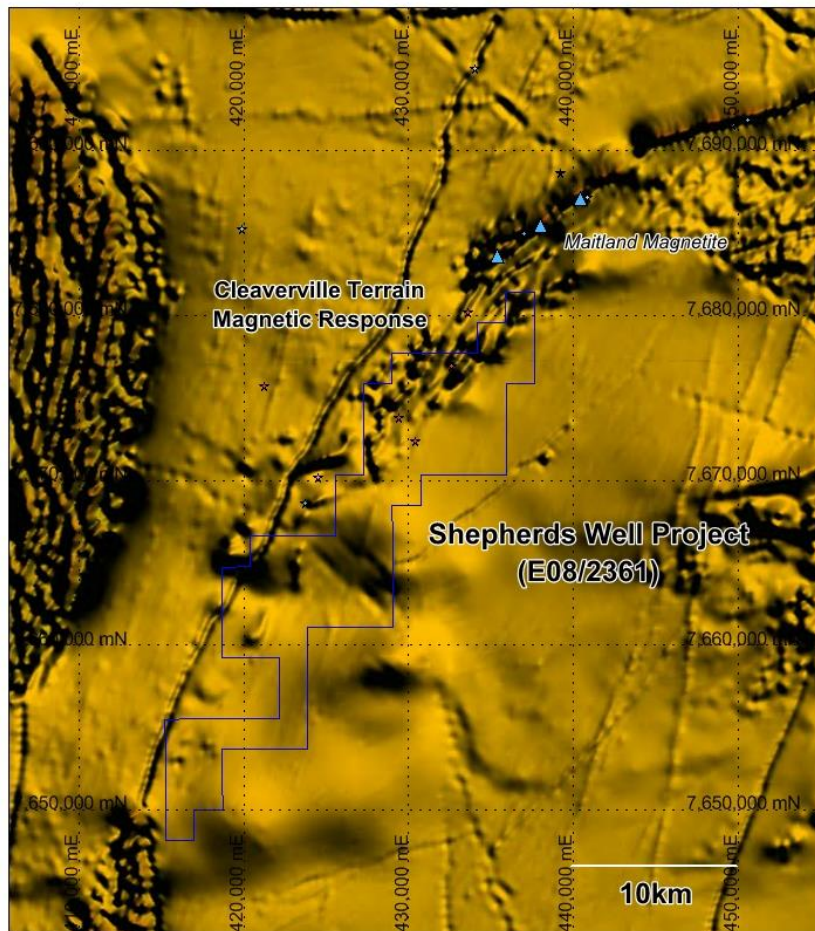


Fig 3. Shepherds Well draped onto the regional total magnetic intensity showing the extension of the Cleaverville Terrain across the Tenement and highlighting targets for exploration follow-up

## Acquisition Terms

1. Percentage interest in the Tenement CZR = 70% and Croydon Gold Pty Ltd = 30%;
2. Consideration is 10,000,000 fully paid ordinary CZR shares and approximately \$121,483 cash;
3. Conditions to be satisfied include shareholder and regulatory approval and CZR due diligence;
4. The end date for the satisfaction of the conditions is 31 December 2013;
5. A joint venture shall be established between the parties in respect of their percentage interests and CZR shall bear 100% of all exploration costs until completion of any bankable feasibility study is completed.

## **ABOUT COZIRON RESOURCES LIMITED**

Coziron Resources Limited has exploration focussed on the Yarraloola (1450km<sup>2</sup> of granted tenements), KingX (859km<sup>2</sup> granted and 2127 km<sup>2</sup> under application) and Buddadoo (210km<sup>2</sup> granted) Projects from the Creasy Group (Fig 6). The Yarraloola and Buddadoo Projects have iron-ore as the principal exploration target, while KingX is focused on prospectivity for manganese.

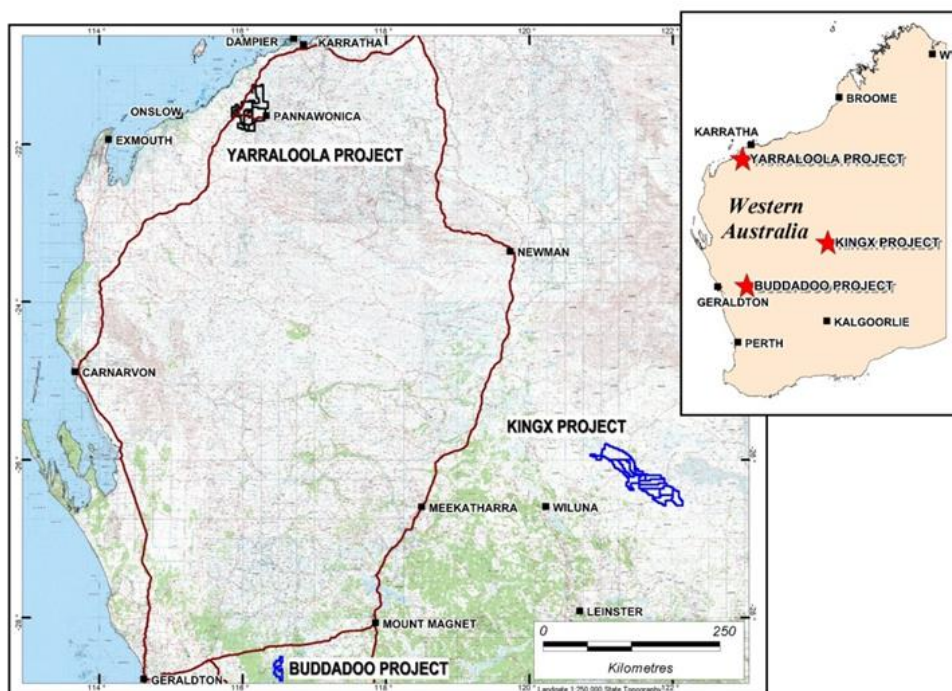


Fig 6. Location of the Coziron Resources Ltd projects in Western Australia.

For further information regarding this announcement please contact Adam Sierakowski on 08 6211 5099.

### **Competent Persons Statement**

The information in this report that relates to mineral resources and exploration results is based on information compiled by Rob Ramsay (BScHons, MSc, PhD) who is a Member of the Australian Institute of Geoscientists. Rob Ramsay is a full-time Consultant Geologist for Coziron and has sufficient experience which is relevant to the style of mineralisation and type of deposit under consideration and to the activity which he is undertaking to qualify as a Competent Person as defined in the 2004 edition of the "Australasian Code for Reporting of Exploration Results, Mineral Resources and Ore Reserves". Rob Ramsay has given his consent to the inclusion in this report of the matters based on the information in the form and context in which it appears.