



ASX:EAF

28 August 2013

Gold Rush on Eastern Rift Project

- **East Africa Resources has discovered a major artisanal mining site on its Eastern Rift Project, with an estimated 1500 plus artisanal miners**
- **Grades of up to 36 g/t gold from rock chip samples**
- **Further mapping, geochemical sampling, trenching and drilling planned**

East Africa Resources Limited (“East Africa” or “Company”) (ASX: EAF) reports that a significant artisanal mining operation has been identified on granted tenement PL 7309/2011, which is part of the wholly owned Eastern Rift Project in northern Tanzania (refer Figure 2). The Eastern Rift Project consists of 27 tenements covering approximately 3,500 km² around Lake Manyara in the north of Tanzania (refer Figure 3).

PL7309/2011 is located in Mbulu District, Manyara Region of the United Republic of Tanzania, approximately 13 kilometers NE of Mbulu town and represents a landholding of approximately 295km².

Significant Artisanal Miners and Workings Present

East Africa recently undertook a reconnaissance site visit to the Eastern Rift Project, which had an emphasis of determining the level of artisanal miners and operations, after receiving a communiqué from the Ministry of Energy and Minerals. During this visit, significant artisanal workings were discovered at a site, locally called ‘Datlaa’ and covering an area approximately 600m long by 200m wide.



Figure 1: A view of the Datlaa Artisanal Mining site

Results of Reconnaissance site visit

During the Datlaa site visit, East Africa’s exploration personnel conducted preliminary mapping and collected 19 grab samples within the artisanal workings.

Significant assay results were returned including;

DGBS010 @ 14.7 g/t

DGBS015 @ 36.1 g/t

DGBS016 @ 18.8g/t

The location of samples is shown on Figure 6.

No previous exploration is known within the tenement.

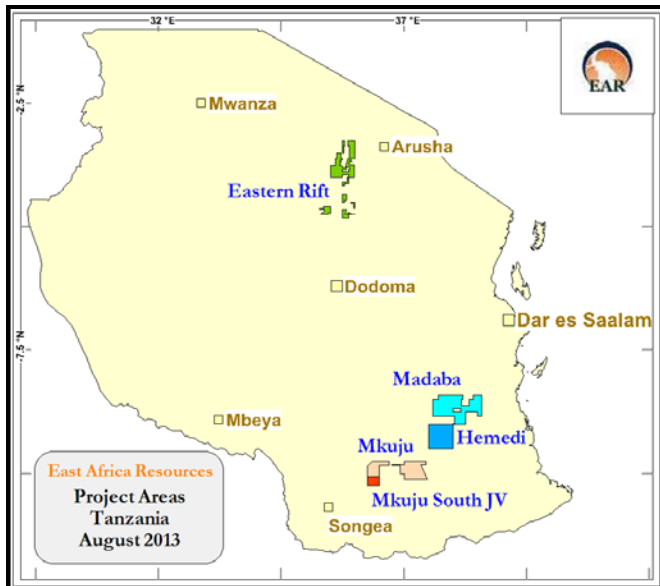


Figure 2: East Africa Resources Tanzanian Projects

Tenement PL7309/2011 was initially granted for the exploration of energy minerals however authorisation to prospect for gold has recently been added to the licence.

Local Geology

The local regional geology can be described as micaceous schists and gneiss. The micaceous schists host hydrothermal quartz veins (reefs), veins and stockworks. The quartz veins appear to be shear related and parallel subparallel to the rock strata and regional foliation. The quartz veins (reefs) host gold mineralisation and overall have a strike length of approximately 1200m, strike north east and dip to the NW at 30°. Samples were taken from the artisanal workings/stockpiles and submitted to ALS Chemex for screen fire assay determinations. Due to the expected coarse nature of gold, the grab samples were submitted for Screen fire assay determinations. Results are shown in Table 1.

The property hosts the Usagaran metamorphic rocks, comprising Quartzo-feldspathic gneiss, granitoid gneiss, quartzite and pegmatites of the Usagaran System. The quartzo-feldspathic gneiss rock by characterised by small scale compositional banding and folding; they are generally well foliated and have granular texture. The bands of amphibolite are commonly separated into boudins and cut by an intricate network of quartzo-feldspathic veins and stockworks. These rocks cover more than 90% percent of the investigated area.



Figure 5: Pit location of sample DGBS010

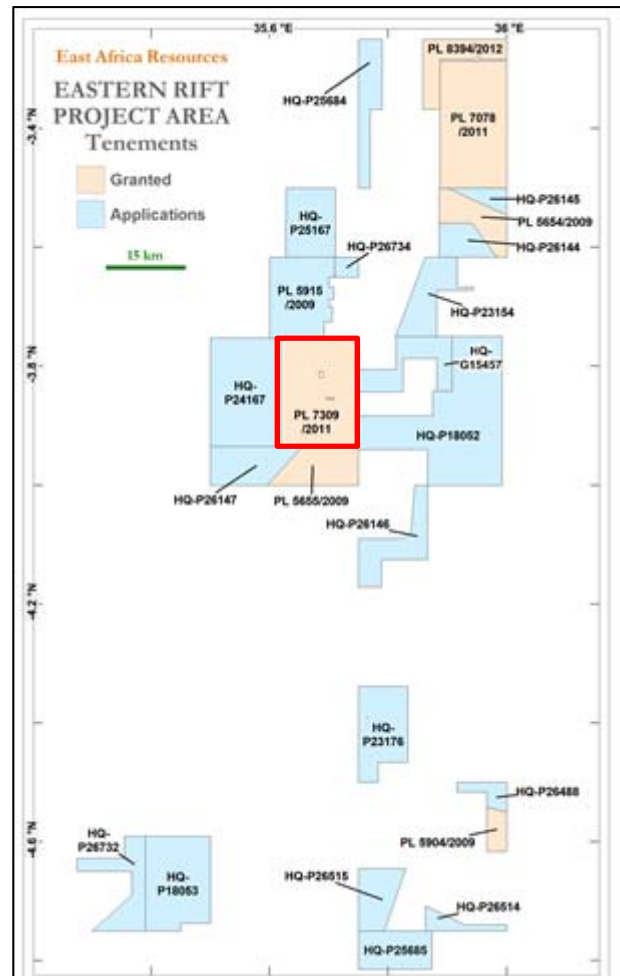


Figure 3: Eastern Rift Project Overview

or

Sample # 10; DGBS010 was taken 15m depth below the surface in an active pit (Figure 5). The quartz vein and host gneiss rocks both strike at 030° and dips at approx.45° towards SE.

Future Exploration Work Program

The Company has begun planning an exploration programme for the Datlaa site and other prospective areas on PL7309/2011.

Follow up work may include:

1. Detailed litho-structural mapping of the Datlaa site;
2. Trenching and further rock chip sampling of outcrops and;
3. Phase 1 RC drilling campaign to target strike and depths extensions.

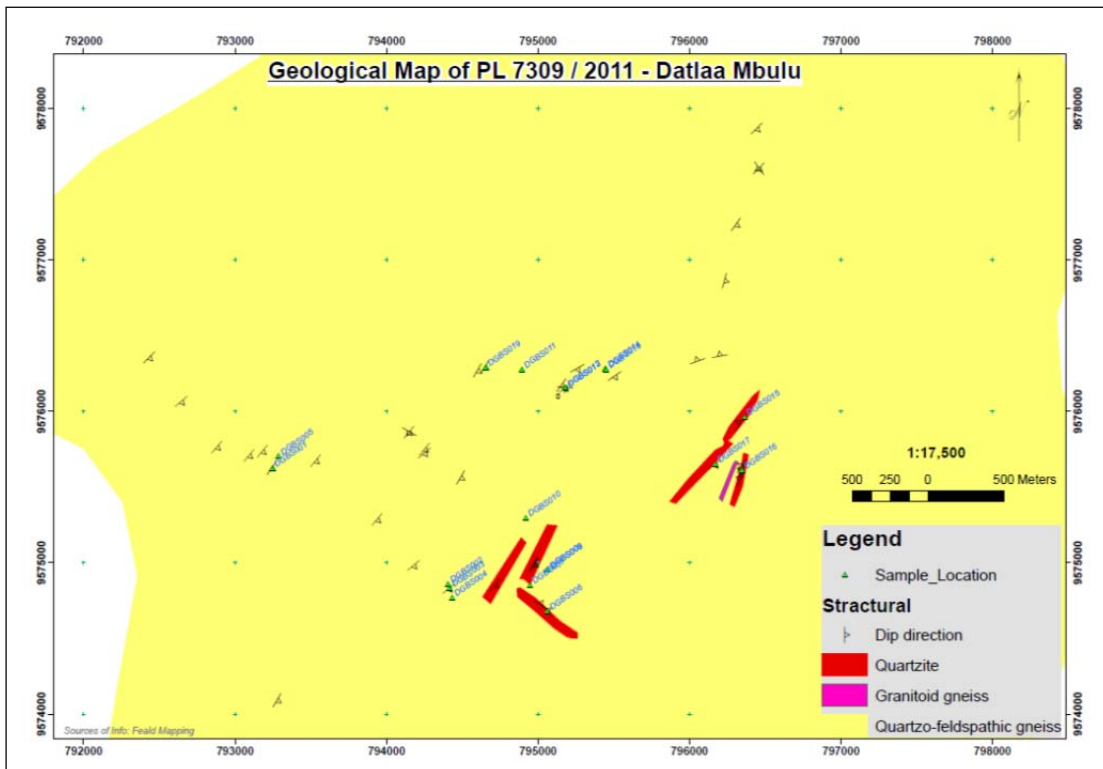


Figure 6: Datlaa Mbulu preliminary geological map with sample locations

CEO's Comment

The Chief Executive Officer of East Africa, Ms Katina Law, said “The Datlaa artisanal site represents a new area of gold mineralisation in a largely unexplored part of Tanzania. The high number of artisanal miners and the large area of their workings, suggest a significant gold occurrence that warrants follow up. Assay results from Datlaa indicate the presence of high grade gold. The Company looks forward to providing future updates on evaluation programs for the Datlaa gold discovery.”

East Africa Resources Background

East Africa has direct and joint venture interests in a portfolio of uranium exploration tenements in East Africa. The Company controls licences and applications in Tanzania that cover a total area of approximately 15,200 km² and include sandstone-hosted roll front type uranium targets within the highly prospective Karoo-age sediments of southern Tanzania (**Mkuju, Mkuju South JV Project, Madaba Project and Hemedi Project**) and palaeochannel associated calcrete hosted uranium targets within the **Eastern Rift** of Tanzania.

The Company has established an in-country exploration team in Tanzania and is implementing an aggressive exploration program, with a strong emphasis on the application of modern exploration technologies and targeted drilling, to evaluate the potential of its uranium and gold exploration projects.

Summary of Grab sample Results:

Sample ID	Easting	Northing	Method Analyte	WEI-21	Au-SCR24	Au-SCR24	Au-SCR24	Au-SCR24	Au-SCR24	Au-SCR24	Au-AA26	Au-AA26D
				Recvd Wt.	Au Total (+)(-) Combined	Au (+) Fraction	Au (-) Fraction	Au (+) mg	WT. + Frac Entire	WT. - Frac Entire	Au	Au
				kg	ppm	ppm	ppm	mg	g	g	ppm	ppm
				0.02	0.05	0.05	0.05	0.001	0.01	0.1	0.01	0.01
DGBS001	793243	9575623	DGBS001	3.23	0.05	0.38	<0.05	0.019	49.63	534.9	0.02	0.02
DGBS002	794404	9574859	DGBS002	2.43	<0.05	<0.05	<0.05	<0.001	45.1	727.9	<0.01	0.01
DGBS003	794414	9574830	DGBS003	2.59	0.07	<0.05	0.08	<0.001	67.59	602.4	0.08	0.07
DGBS004	794432	9574769	DGBS004	2.34	<0.05	<0.05	<0.05	<0.001	39.52	589.6	0.01	0.05
DGBS005	793284	9575704	DGBS005	3.26	<0.05	<0.05	<0.05	<0.001	61.14	657.1	<0.01	0.01
DGBS006	795060	9574680	DGBS006	3.73	0.78	0.91	0.77	0.036	39.49	509.9	0.74	0.8
DGBS007	794945	9574853	DGBS007	3.07	<0.05	<0.05	0.05	<0.001	57.56	819.8	0.04	0.05
DGBS008	795062	9574954	DGBS008	2.59	<0.05	0.1	<0.05	0.007	73.08	458.2	0.03	0.03
DGBS009	795061	9574954	DGBS009	1.86	0.48	<0.05	0.53	0.002	52.33	467.5	0.55	0.52
DGBS010	794918	9575295	DGBS010	1.96	14.7	28.6	12.55	1.981	69.34	442.9	9.71	15.4
DGBS011	794892	9576278	DGBS011	2.65	0.06	0.33	<0.05	0.023	70.64	467.4	0.02	0.01
DGBS012	795179	9576155	DGBS012	2.93	<0.05	<0.05	<0.05	<0.001	58.66	742.9	<0.01	0.01
DGBS013	795180	9576155	DGBS013	2.7	<0.05	<0.05	<0.05	<0.001	56.97	852.8	<0.01	<0.01
DGBS014	795444	9576284	DGBS014	2.7	<0.05	<0.05	<0.05	<0.001	62.84	373.5	<0.01	<0.01
DGBS015	796363	9575963	DGBS015	1.37	36.1	45.6	35.3	3.03	66.47	738.9	42.1	34.2
DGBS016	796345	9575611	DGBS016	2.01	18.8	47.8	15.55	2.424	50.67	455.6	15.5	15.7
DGBS017	796170	9575650	DGBS017	2.77	0.23	0.08	0.25	0.006	78.71	527.3	0.12	0.32
DGBS018	795447	9576274	DGBS018	3.52	0.05	0.14	<0.05	0.01	69.24	591.1	0.02	0.05
DGBS019	794651	9576292	DGBS019	3.22	<0.05	0.17	<0.05	0.015	89.94	682.2	<0.01	<0.01

Notes:

1. Grab samples were collected using random sampling techniques within current open pits and recorded by handheld GPS locations
2. Co-ordinates are in UTM grid (WGS84 Zone 36S)
3. Sample preparation by ALS Chemex laboratory in Mwanza, Tanzania
4. Sample analysis by ALS Chemex in Johannesburg, RSA, using Screen fire assay techniques.

Enquiries

The Company:

Katina Law

Executive Director/Chief Executive Officer

+61 8 9227 3270

Eva Witheridge or Ernie Myers

Company Secretary

+61 8 9227 3270

[Email: info@eastafricaresources.com.au](mailto:info@eastafricaresources.com.au)

Competent Person

The information in this report that relates to Exploration Results, Mineral Resources or Ore Reserves is based on information compiled by Mr. James Sullivan, who is a Member of the Australian Institute of Geoscientists. Mr. Sullivan is a full-time employee of East Africa Resources Limited. Mr. Sullivan has sufficient experience which is relevant to the style of mineralisation and type of deposit under consideration and to the activity which he is undertaking to qualify as a Competent Person as defined in the 2004 Edition of the 'Australasian Code for Reporting of Exploration Results, Mineral Resources and Ore Reserves (The JORC Code). Mr. Sullivan consents to the inclusion in this report of the matters based on his information in the form and context in which it appears.