



1187 Hay Street
West Perth, WA 6005
Australia

T: +61 8 6142 5088
F: +61 8 9200 5638
W: www.ishineresources.com
E: admin@ishineresources.com



Date: 30 April 2013

QUARTERLY ACTIVITIES REPORT ENDING 31 MARCH 2013

HIGHLIGHTS

- **Appointment of Chief Executive Officer**
- **Assay results have been received from reverse circulation drilling at Mt Watson. The best results are 3 m grading 0.12% Cu from 18 m.**

Corporate

During the quarter, Ishine International Resources Limited has appointed Mr Chuanshui Yin as Chief Executive Officer of the company.

Mr Yin has nearly 20 years of operational and management experience, starting his career in a large juice enterprise in PRC in 1994. He has had mining and mineral processing training in business administration at Tsinghua University and Toronto University. He has been active in developing Sino-Australia business ventures in mining and has facilitated a number of negotiations between Chinese and Australian parties in mining development investments and off-take agreements. He has developed a good network of business relationships all around the world. Mr Yin holds a Master degree in Economics and Law from Zhongnan University. He is currently completing a doctorate degree in Finance. He has significant diverse experience in business marketing and finance research.

Exploration

Mt Watson Project

Ishine received assay results from the reverse circulation drilling ("RC Drilling") at Mt Watson with the best results are 3 m grading 0.12% Cu from 18 m.

The Mount Watson Project (the Project) is a joint venture between Ishine (70%) and Kabiri Resources Pty Ltd (30%).

The Project is situated approximately 120 km north of Mt Isa in north-west Queensland and comprises two tenements, EPM15933 and EPM15986, covering an area of 103.6 km². The tenements surround the Mt Watson copper mine (not on the Ishine tenements) which produced 8.08 Mt at an average grade of 0.9% Cu.

Twelve RC drillholes (totalling 1,174 m) were drilled on tenement EPM15986 on previously identified versatile time domain electromagnetic survey (VTEM) anomalies 5 km to the south-west and along strike of the Mt Watson copper mine. Table 1 lists the drillhole coordinates and drilling orientation. Figures 1 and 2 show the drillhole locations.

Table 1 Drillhole Collars

Drillhole	Easting (m)	Northing (m)	Elevation (m)	Depth (m)	Azimuth (°)	Dip (°)
ZK3-1	7811956	379840	278	78	110	60
ZK3-2	7811983	379804	275	120	110	60
ZK3-3	7812007	379774	273	102	110	60
ZK5-1	7811794	379756	276	96	105	60
ZK5-2	7811810	379735	278	78	105	60
ZK7-1	7811606	379704	277	84	120	60
ZK7-2	7811637	379649	283	144	120	60
ZK10-1	7811403	379462	285	78	145	50
ZK10-2	7811441	379430	287	120	145	60
ZK20-1	7810809	378424	266	120	110	60
ZK25-1	7810330	378140	254	84	120	60
ZK27-1	7810271	377922	250	70	170	60

The target anomalies exist in a large fold structure believed to be favourable for hosting mineralisation analogous to that found and mined nearby at Mt Watson.

Samples were collected for every metre drilled and submitted to Bureau Veritas Amdel for preparation (Mt Isa, Queensland) and analysis (Cardiff, Newcastle, New South Wales). Each sample was dried, crushed and split to approximately 200 grams then pulverised in an LM5 ring mill to 85% passing 75 microns. Each sample was assayed for copper, lead and zinc using induced coupled plasma optical emission spectrometry (ICP-OES).

Drillhole ZK25-1 intersected one shallow zone of low order anomalous copper (Cu) with grades up to 1,390 ppm Cu (Table 2).

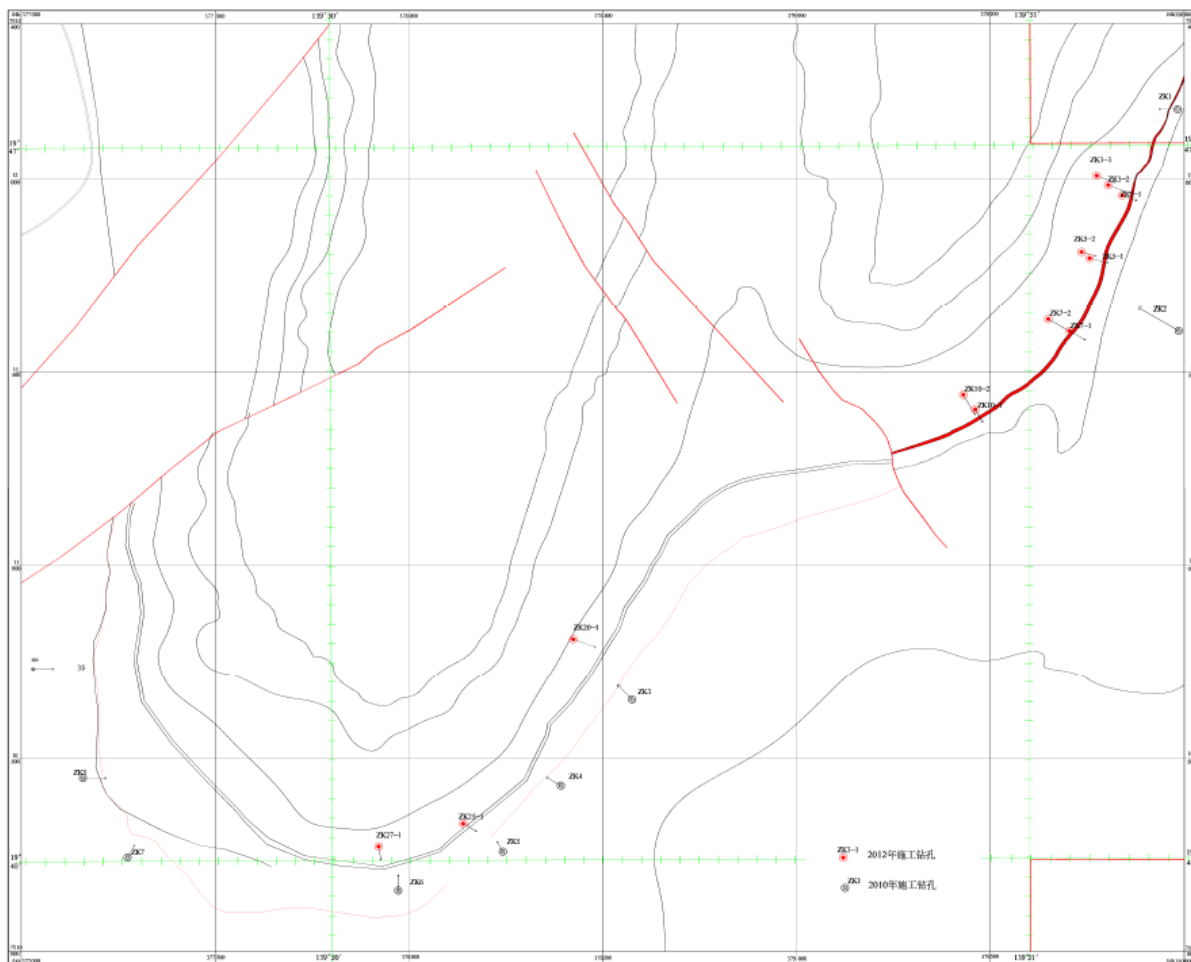


Table 2 Anomalous Copper Assays

Depth From (m) ¹	Depth To (m) [*]	Cu (ppm)	Pb (ppm)	Zn (ppm)
18	19	1,200	6	38
19	20	1,390	11	45
20	21	1,060	10	36

¹ Intersections are downhole measurements

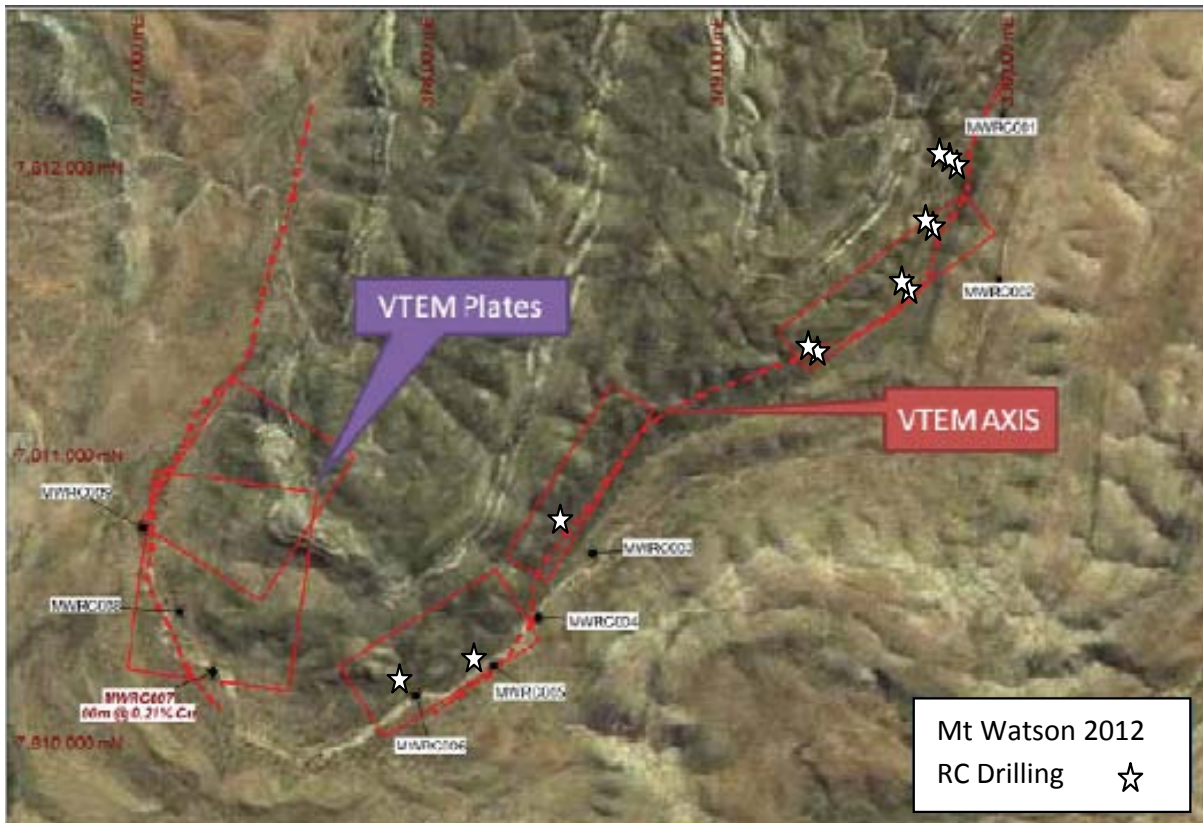
Figure 1 Location of 2012 Drilling



Scale 1:5000



Figure 2 Location of 2012 Drilling Within the Fold Structure



Ishine plans to confirm the style of mineralisation along the fold structure by drilling seven diamond drillholes, for a total of 1,300m, on tenement EPM15986.

Ishine continues to make effort to attract potential international farm-in investors to join the Ishine's exploration venture, to explore on the tenements ground for potential resources.

For further information please contact:

Leonard Math | Company Secretary
T: +61 8 6142 5088

MEDIA RELEASE

Ishine International Resources Ltd



Ishine
兴盛国际

1187 Hay Street
West Perth, WA 6005
Australia

T: +61 8 6142 5088
F: +61 8 9200 5638
W: www.ishineresources.com
E: admin@ishineresources.com



JORC Code Compliance Statement

The information in this announcement relating to exploration results was compiled by Mr Dean Carville who is a Member of the Australasian Institute of Mining and Metallurgy. Mr Carville is a full-time employee of AMC Consultants Pty Ltd and has sufficient experience relevant to the style of mineralisation and type of deposit under consideration and to the activity which he is undertaking to qualify as a Competent Person as defined in the 2004 Edition of the Australasian Code for Reporting of Exploration Results, Mineral Resources and Ore Reserves (the JORC Code). Mr Carville consents to the inclusion of this information in the form and context in which it appears.