



Matrix Metals Limited
ACN 082 593 235

Australian Securities Exchange
Code: MRX

Ordinary shares
306,151,329

Unlisted Options
40,000,000 (exercise price of \$0.005; expiry date of 31 Dec 2016)

Board of Directors
Jason Bontempo Executive Director
Tony Sage Non-executive Director
Jeff Hamilton Non-executive Director

Company Secretary
Claire Tolcon

ASX Announcement
6 August 2013

Amended Quarterly Activities Report

Matrix Metals Limited (ASX: MRX) ("Matrix" or the "Company") attaches its Quarterly Activities Report for the period ended 30 June 2013 with an amended Competent Person's Statement.

END

For more information, please contact:

Jason Bontempo +61 8 9380 9555
Executive Director

Claire Tolcon +61 8 9380 9555
Company Secretary



Matrix Metals Limited
ACN 082 593 235

Australian Securities Exchange
Code: MRX

Ordinary shares
306,151,329

Unlisted Options
40,000,000 (exercise price of \$0.005; expiry date of 31 Dec 2016)

Board of Directors
Jason Bontempo Executive Director
Tony Sage Non-executive Director
Jeff Hamilton Non-executive Director

Company Secretary
Claire Tolcon

ASX Announcement

Quarterly Activities Report – Period Ended 30th June 2013

Highlights

Follow-up detailed geochemical sampling and geological mapping has confirmed the presence of Copper-in-Soil anomalism at the ‘Rosebud’ Prospect.

Corporate

Matrix Metals Limited (ASX:MRX) (“Matrix” or the “Company”) is an ASX listed exploration company based in Perth, Western Australia. The objective of the Company is to initially focus on the evaluation and exploration of its 100% owned Wee MacGregor Project, located in Queensland, whilst actively pursuing new business opportunities in the mineral and energy sectors.

At 30th June 2013, the Company had \$700k cash at bank.

Projects

Wee MacGregor Copper Project (“Wee MacGregor Project” or “Project”)

The Wee MacGregor Project is located approximately 30km southeast of Mt Isa in Queensland (refer Figure 1). The Project comprises five granted Exploration Permits for Minerals (“EPMs”) covering an area of 209km² and one EPM application covering an area of approximately 19.2km² (refer Figure 2). The tenements are prospective for oxide and sulphide copper, gold and cobalt mineralisation. The Company has commenced an initial exploration program with the objective of determining the potential for standalone and/or satellite oxide and sulphide copper-gold deposits.

The resumption of favourable weather conditions in North Western Queensland has seen the completion of a follow-up geochemical sampling and geological mapping program at the ‘Rosebud’ Prospect (EPM17449). Work undertaken focused on infilling the 800x100m Copper-in-soil geochemical anomaly defined during the September quarter 2012, with infill samples taken on 200m line spacing’s with 25m between samples (refer Figure 3).

Results have confirmed the presence of the north-northwest trending Copper-in-soil anomaly over the 800m strike length. The anomaly is thought to be associated with the contact

between the Ballara and Argylla formations and is coincident with an elongate airborne magnetic anomaly.

A review of historical reports relating to the Rosebud mine will now be reviewed in order to determine the relationship between the surficial geochemical anomalism and the historical mine workings. This work will aid the accuracy of drill targets to be generated for late 2013.

Reconnaissance geological mapping undertaken during the quarter at the **Central and Western Areas** (EPM17907, EPM17904) failed to identify any additional zones of interest. Work planned for the upcoming quarter will focus on assessing the potential for acquisition of appropriate geophysical data to target large scale Copper-Gold-Cobalt mineralisation within the greater tenement package area.

Yours sincerely

Jason Bontempo
Executive Director

For more information, please contact:

Jason Bontempo
Executive Director

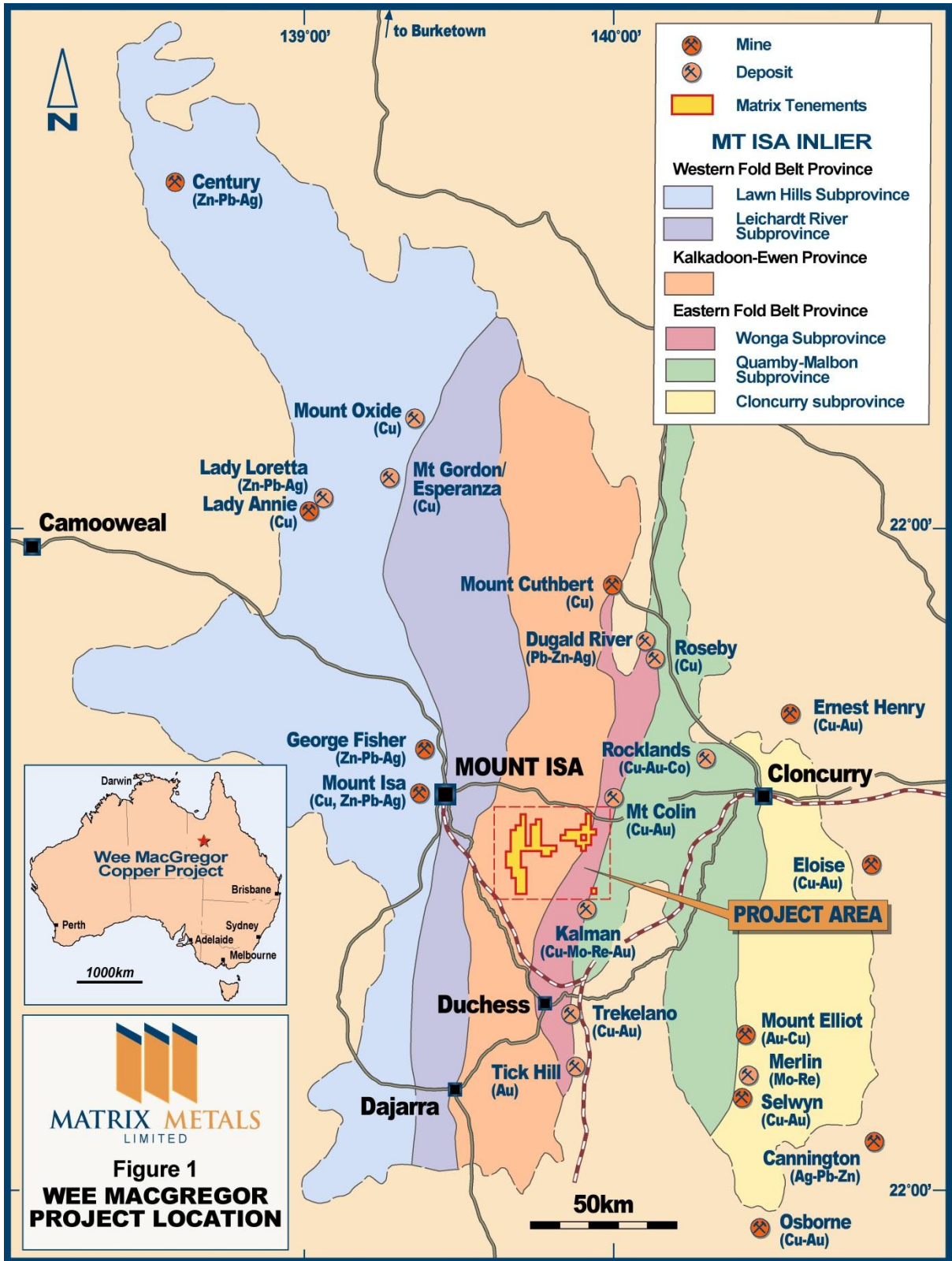
+61 8 9380 9555

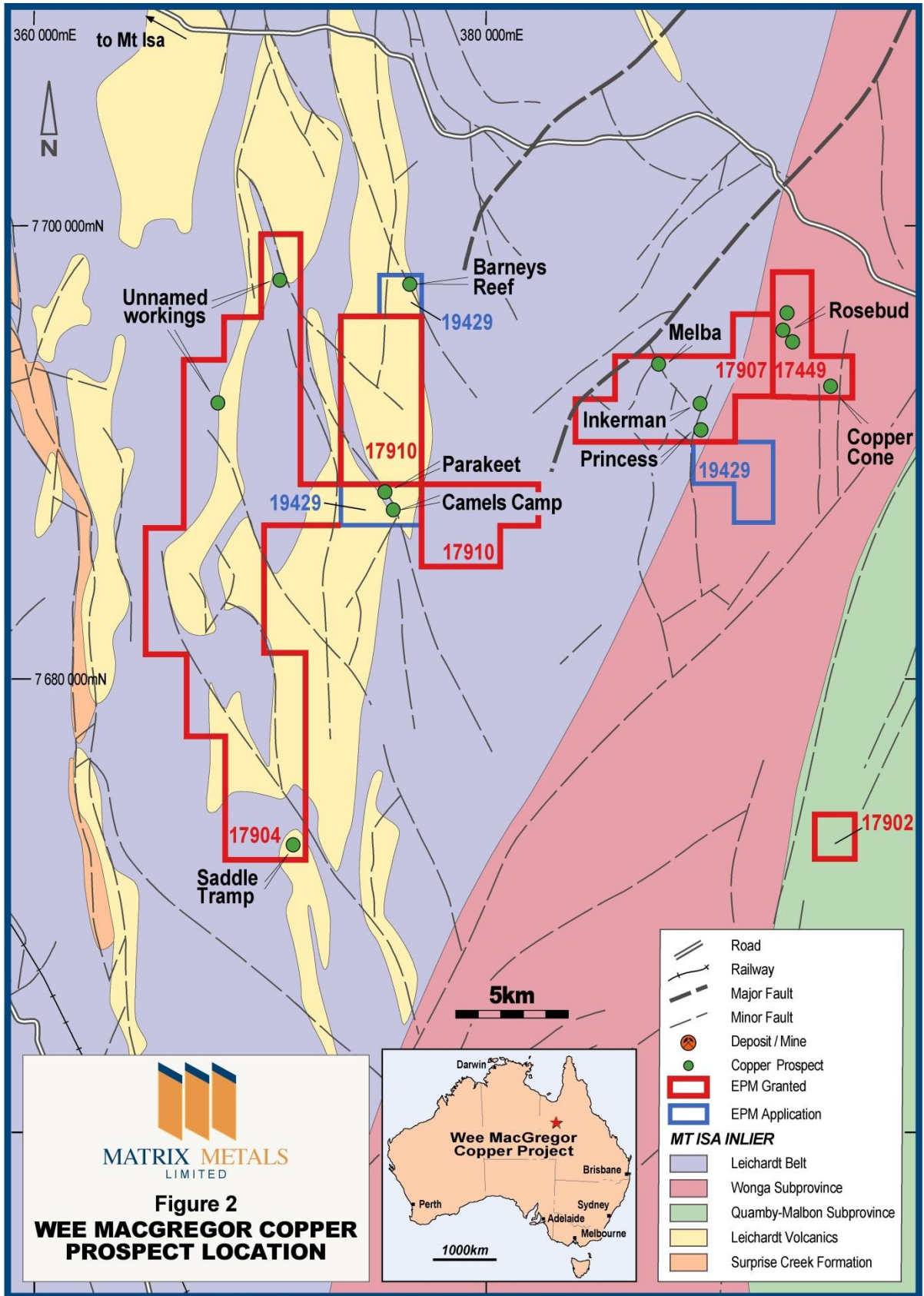
Claire Tolcon
Company Secretary

+61 8 9380 9555

Competent Person's Statement:

The information in this report that relates to Exploration Results and Mineral Resources is based on information compiled by Mr. Dennis Kruger, a member of The Australasian Institute of Mining and Metallurgy. Mr. Kruger, is a consultant to Matrix Metals Limited and has sufficient experience that is relevant to the style of mineralisation and type of deposit under consideration and to the activity that he is undertaking to qualify as a Competent Person as defined in the 2004 edition of the "Australasian Code for Reporting of Exploration Results, Mineral Resources and Ore Reserves". Mr. Kruger consents to the inclusion in this report of the matters based on the information in the form and context in which it appears.





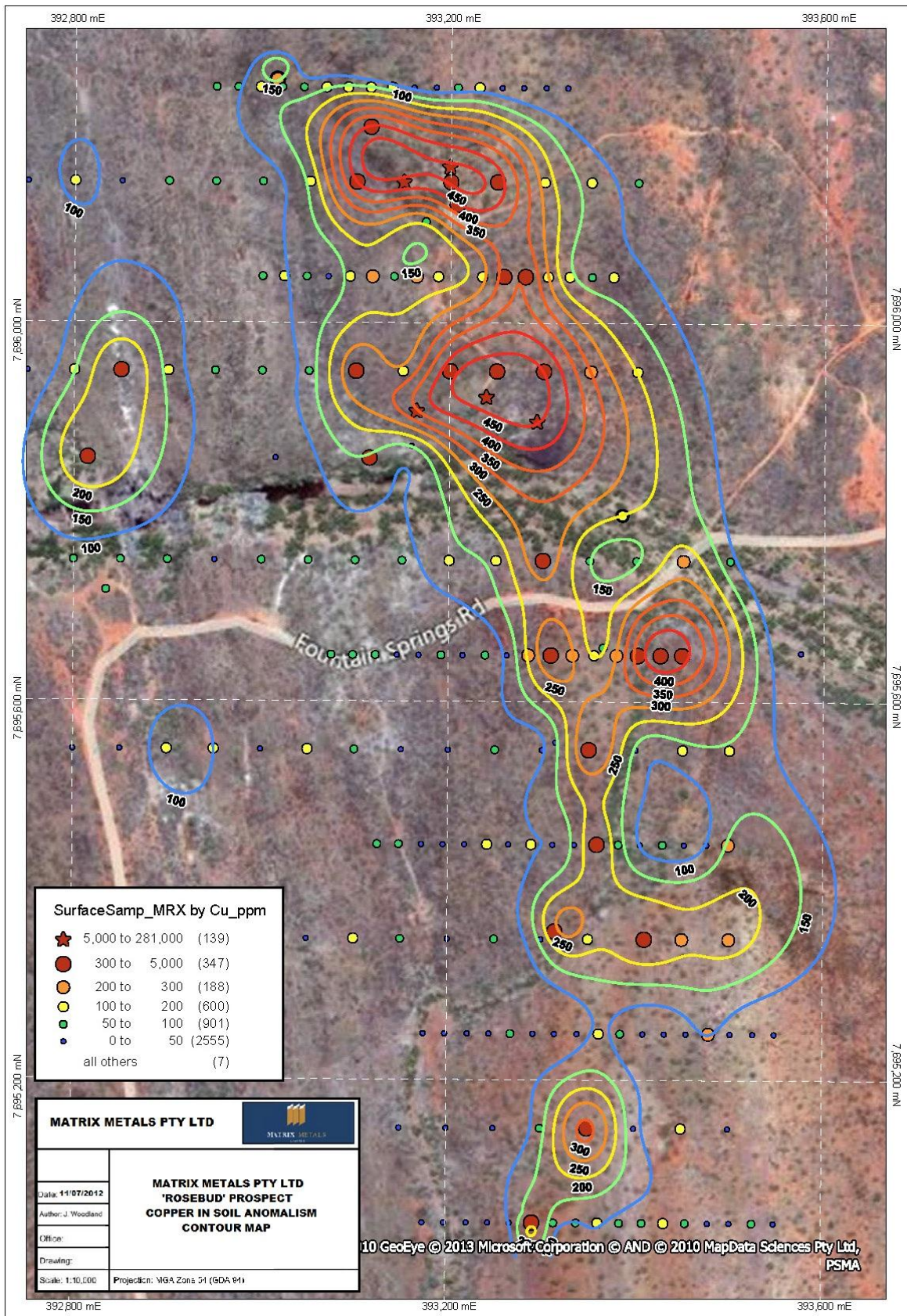


Figure 3: EPM17449 'Rosebud' – 2013 infill Copper in Soil Geochemistry grid.