

Diggers & Dealers 2013

Presentation by Collin Ellison, Managing Director & CEO

PMIGOLD

C O R P O R A T I O N



ID: —M
m: 479.62

E ID: —M
s: 485.70m

LE ID: —M
m: 489.87

Disclaimer:

This presentation contains forward-looking statements which involve known and unknown risks, delays and uncertainties not under the Company's control which may cause actual results, performance or achievements of the Company to be materially different from the results, performance or expectations implied by these forward-looking statements. Unless otherwise specified, all financial figures in this presentation are in Canadian Dollars unless otherwise stated. Product names that appear within this presentation are registered trademarks of their respective owner. The information contained in this Presentation or subsequently provided to the Recipient of this Presentation whether orally or in writing by or on behalf of PMI Gold Corporation (PMI) or their respective employees, agents or consultants ("Information") is provided to the Recipients on the terms and conditions set out in this notice.

The purpose of this Presentation is to provide Recipients with Information relating to PMI. The Presentation has been prepared by PMI and each Recipient must make his/her own independent assessment and investigation of PMI and its business and assets and should not rely on any statement or the adequacy and accuracy of any Information. PMI makes no representation or warranty (express or implied) as to the accuracy, reliability or completeness of the Information.

PMI and its respective directors, employees, agents and consultants shall have no liability (including liability to any person by reason of negligence or negligent misstatement) for any statements, opinions, information or matters (express or implied) arising out of, contained in or derived from, or for any omissions from the Presentation, except liability under statute that cannot be excluded. The Presentation contains reference to certain intentions, expectations and plans of PMI. These intentions, expectations and plans may or may not be achieved. They are based on certain assumptions which may not be met or on which views may differ.

The performance and operations of PMI may be influenced by a number of factors, many of which are outside the control of PMI. No representation or warranty, express or implied, is made by PMI or any of its respective directors, officers, employees, advisers or agents that any intentions, expectations or plans will be achieved either totally or partially or that any particular rate of return will be achieved.

Gold resources and reserves stated are based on JORC and or Canadian NI43-101 compliant resources and reserves. For Information purposes only. We seek safe harbour.

THE TSX EXCHANGE HAS NOT REVIEWED AND DOES NOT ACCEPT
RESPONSIBILITY FOR THE ADEQUACY OR ACCURACY OF THIS PRESENTATION

PMI GOLD
CORPORATION

Competent Persons Statement:

Exploration:

Information that relates to Exploration Results is based on information compiled by Thomas Amoah, who is employed by Adansi Gold Company (Gh) Ltd, a wholly owned subsidiary of PMI Gold Corporation. Mr Amoah, who is a Member of the Australian Institute of Geoscientists (MAIG), has sufficient experience which is relevant to the style of mineralization and type of deposit under consideration and to the activity which he is undertaking to qualify as a Competent Person as defined in the 2004 Edition of the 'Australasian Code for Reporting Exploration Results, Mineral Resources and Ore Reserves'. Mr Amoah consents to the inclusion in this presentation of the matters based on his information in the form and context in which it appears. Scientific and technical information contained relating to exploration results has been reviewed and approved by Thomas Amoah, MAIG, MSEG a "qualified person" as defined under National Instrument 43-101 (NI 43-101). Mr. Amoah is not independent of PMI under NI 43-101. Field work was supervised by Mr Amoah (VP-Exploration). Drill cuttings were logged and sampled on site, with 3kg samples sent to the MinAnalytical prep laboratory on site, and analyzed for gold by fire assay-AA on a 50 gram sample charge or by screened metallics AA finish in MinAnalytical laboratory in Perth, and Performance Laboratory in Bibiani, Ghana. Internal QC consisted of inserting both blanks and standards into the sample stream and multiple re-assays of selected anomalous samples. Where multiple assays were received for an interval, the final value reported was the screened metallic assay if available, or in lieu of that the average of the other results for the interval. Results from the QC program suggest that the reported results are accurate. Intercepts were calculated with a minimum 0.5 g/t Au cut off at the beginning and the end of the intercept and allowing for no more than three consecutive metres of less than 0.5 g/t Au internal dilution. True widths are estimated at from 60% to 70% of the stated core length.

Feasibility Study:

PMI filed a NI 43-101 compliant technical report on the Obotan Project outlining the Mineral Resources and Reserves Estimate and the result of the Feasibility Study on September 17, 2012. The NI43-101 technical report was prepared by GR Engineering Services Limited, and co-authored by P. Gleeson, B.Sc. (Hons), M.Sc, MAIGS, MGSA, J. Price, FAusIMM(CP), FGS, MIE(Aust.), R Cheyne, BEng. (Mining), FAusIMM, CEng (IEI), and G. Neeling, BAppSc. (Multidisciplinary) FAusIMM, each of whom is independent for the purposes of NI 43-101. Mr Collin Ellison, President & CEO, BSc Mining, MIMMM, C.Eng, a "qualified person" within the definition of that term in NI43-101, has supervised the preparation of the technical information regarding the Company's mineral projects which is not covered by the filed NI43-101 technical reports on the Obotan Project. The NI43-101 is available for review under the Company's profile on SEDAR at www.sedar.com.

See Appendices for current resource/reserve estimate Competent Person Statements for Obotan Gold Project and Kubi Gold Project.

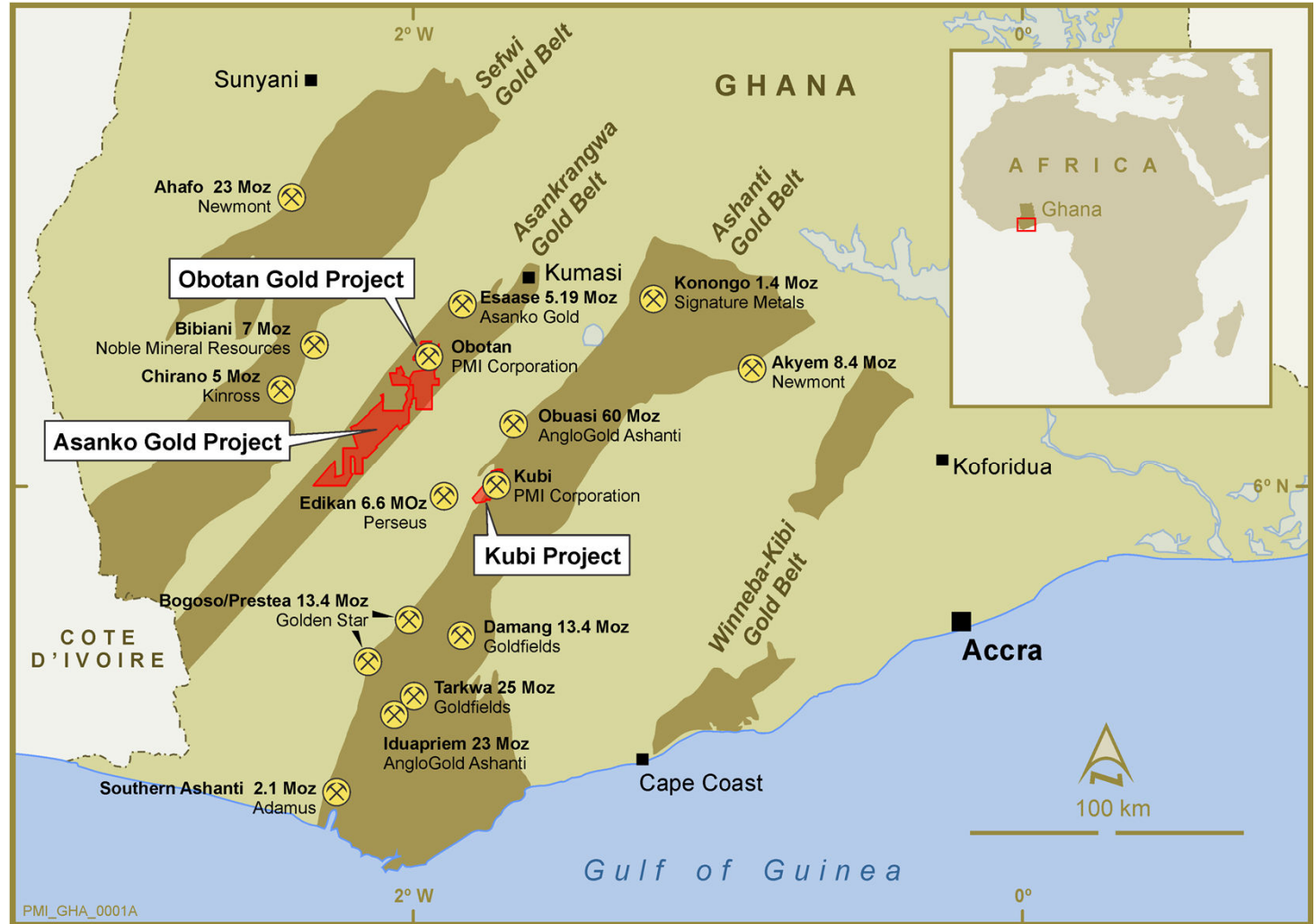
World-Class Gold District - Ghana

Exploring 3 Project Areas

Large exploration footprint of 580km² in two of Ghana's prolific gold belts

Numerous high priority targets for follow-up

Offers potential for major new discoveries



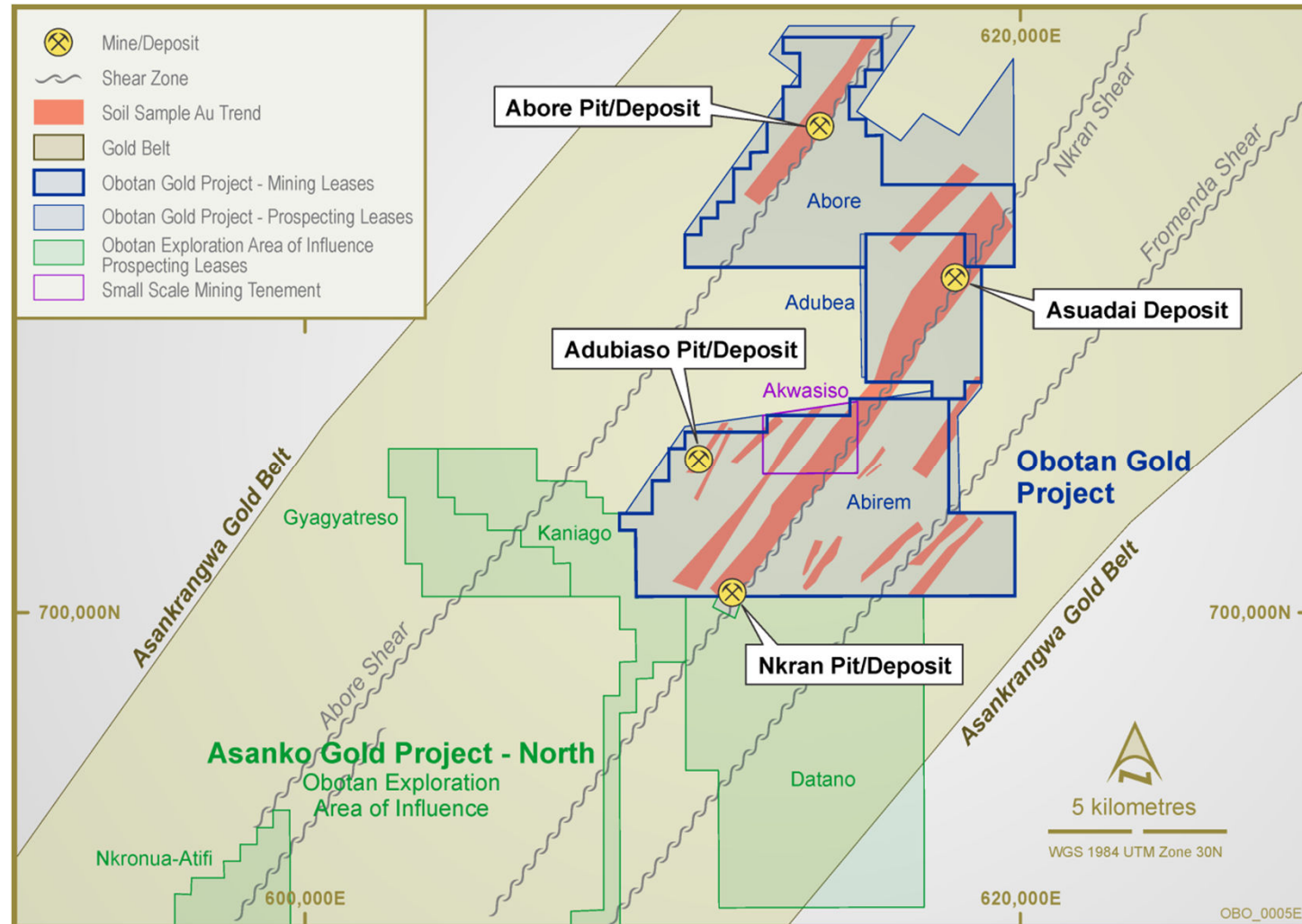
Development at Obotan Gold Project

Feasibility Study completed
August 2012

Proposed 3Mtpa process
operation, mine life of +11
years

Pending Final Investment
Decision

Focused on identifying
additional oxide resources
within trucking distance of
Obotan (15km of Nkran
Deposit)



Development: Obotan Project Timeline

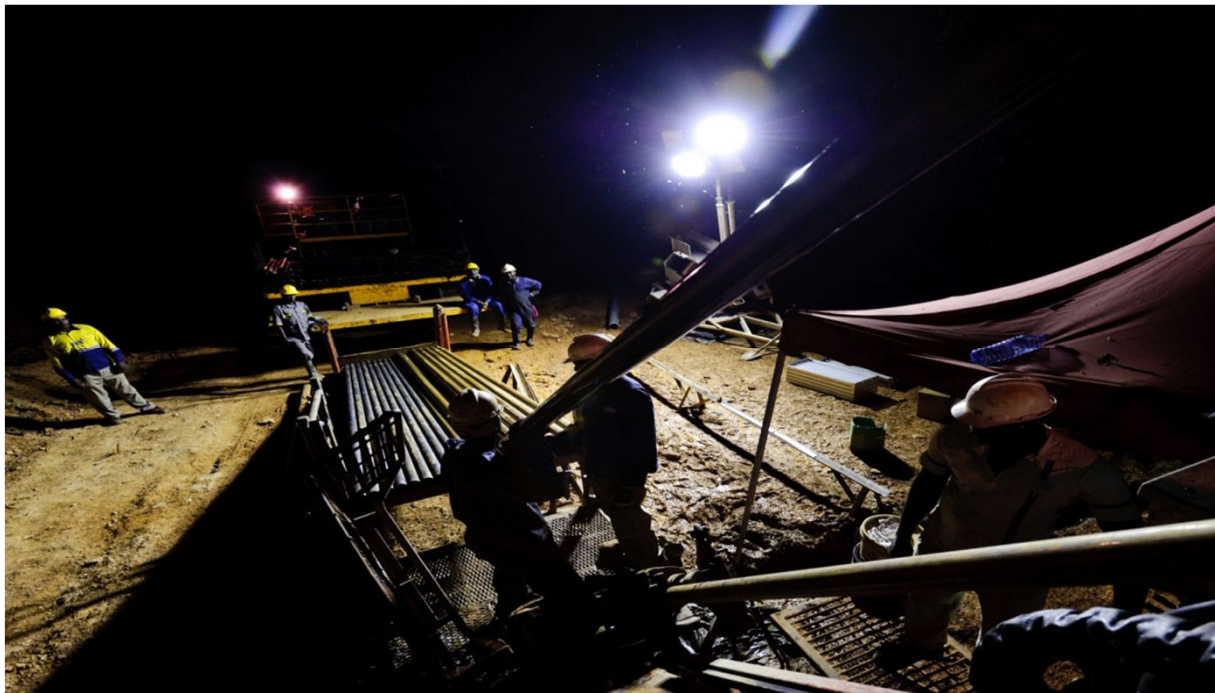
Scope

Pre Feasibility

Feasibility

Project
Construction

Operations



2013/2014:

- Pit Dewatering
- Pre-strip Mining
- Site Earthworks
- Civil Construction
- Fabrication and Steel Erection
- Mechanical Equipment Installations
- Piping and electrical reticulation
- Tailings dam construction
- Infrastructure installation
- Commissioning

Year 1:

Production of Adubaso and Nkran

Years 2 -7 :

Nkran

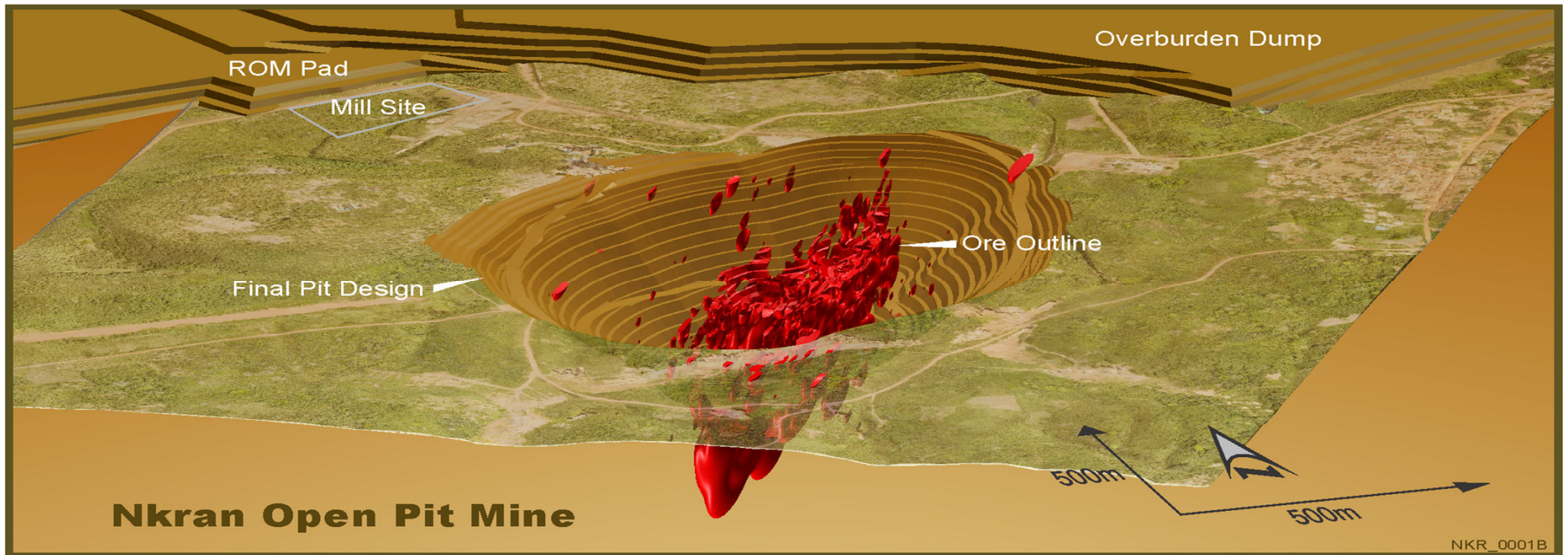
Years 7-9:

Nkran & Abore

Years 10-11:

Nkran & Asuadai

Development: Nkran Open Pit and Site Layout



3D View of Nkran Deposit and Proposed Open Pit Design

75% of resources and 80% of reserves are contained within the **Nkran Deposit**, which also offers future underground potential

Resource Growth through Exploration

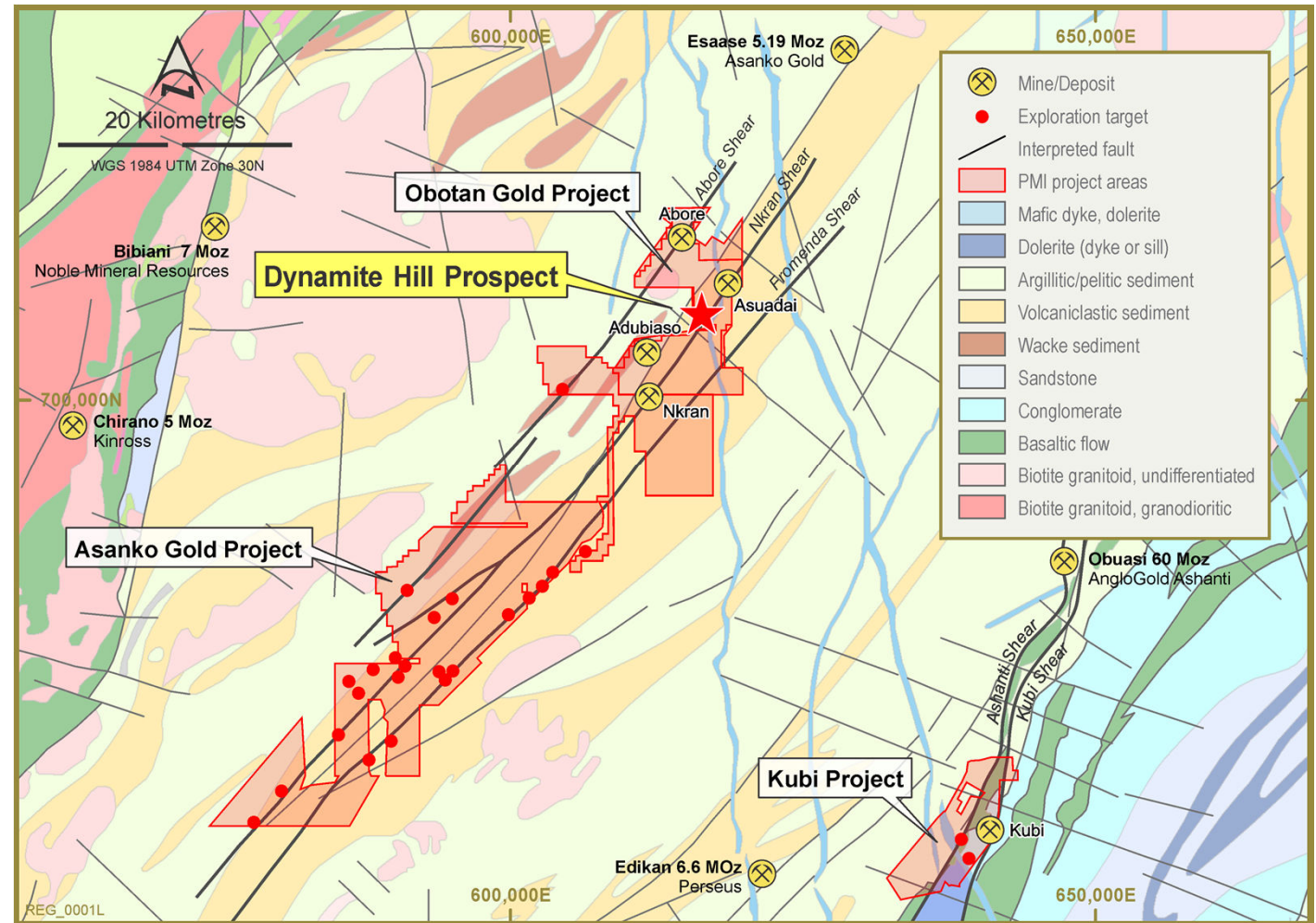
Focused exploration on concessions located within 15km of the Nkran Deposit proposed processing facility.

OBOTAN GOLD PROJECT Asankrangwa Gold Belt	KUBI GOLD PROJECT Ashanti Gold Belt	ASANKO GOLD PROJECT Asankrangwa Gold Belt
1	2	3
<ul style="list-style-type: none"> Identify and increase the oxide resources within trucking distance to the Obotan Project (within 15km of the Nkran Deposit) termed the Obotan Area of Influence 	<ul style="list-style-type: none"> Drill test multiple targets developed by the 2011/12 auger and earlier diamond drilling program at Kubi Obtain access permit to forest reserve 	<ul style="list-style-type: none"> Drill test the multiple targets developed by PMI and past explorers Discover new stand-alone gold deposits in the adjoining Asanko Regional Exploration Project



Dynamite Hill Prospect

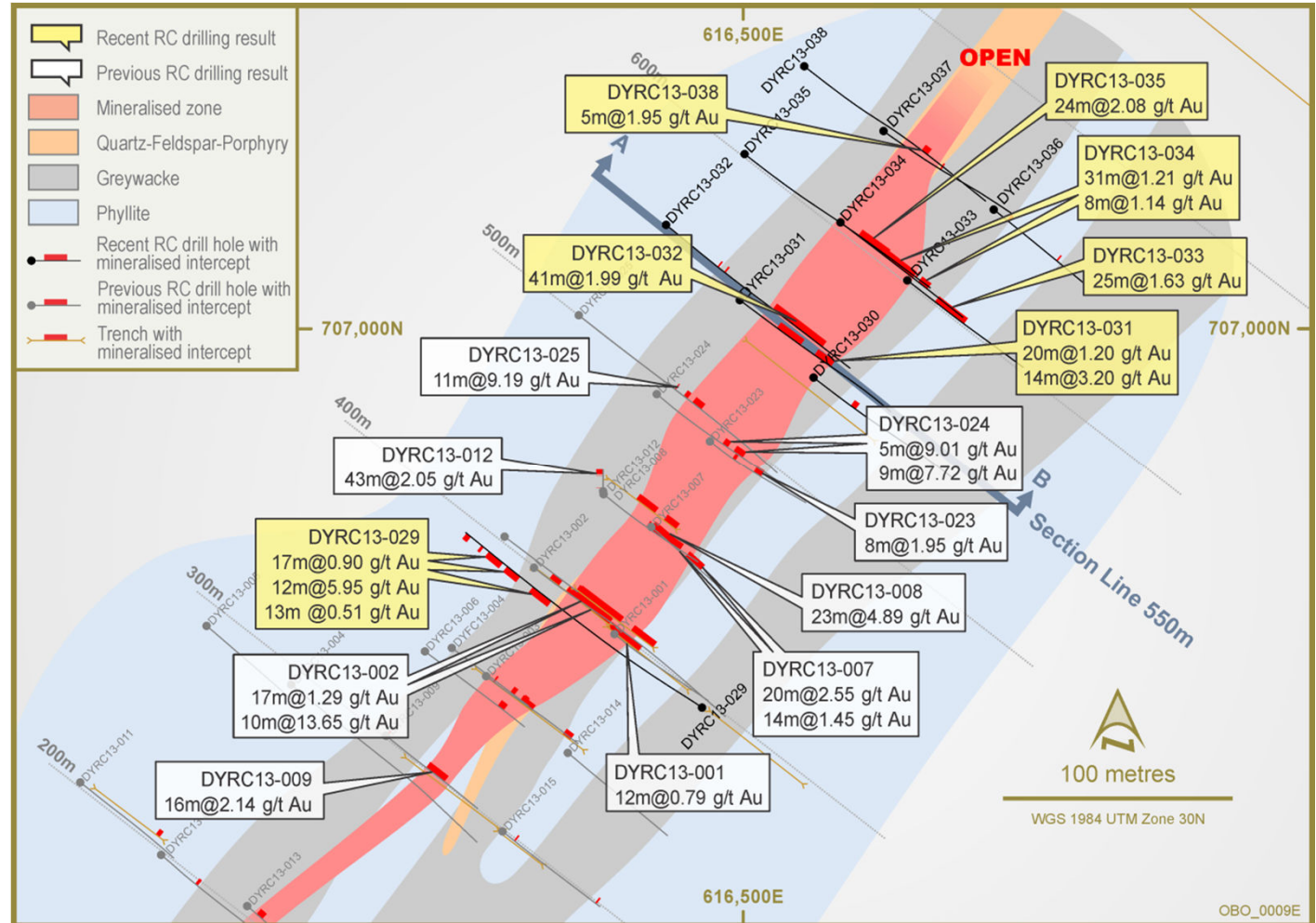
Newly discovered prospect strategically located 7km northeast of the proposed processing facility at Nkran



Dynamite Hill Prospect

Results indicate occurrence of gold system over a strike extent in excess of 600m, open along strike and down dip. Further drilling planned for September 2013

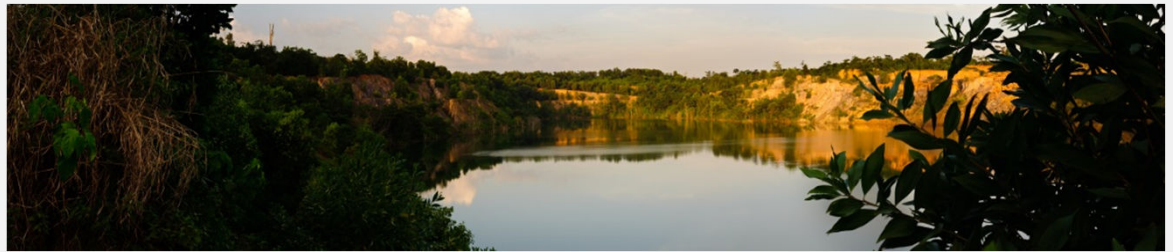
Potential for an oxide resource within Obotan mining lease within trucking distance of the future processing plant.



Driving Value in 2013

Focused on adding shareholder value through production and resource growth

- ❑ Finalise EIS Approval
- ❑ Finalise Project Finance
- ❑ Improve project economics through optimisation and capital reduction
- ❑ Final Investment Decision - commence mine construction in H2, 2013
- ❑ Focus exploration to test high-priority targets to add resources/reserves
- ❑ Create value and growth through development, focused exploration and merger/ acquisition opportunities



Operating Strategy

Conservation of funds while completing Project Financing:

1. Targeting a reduction in cost across the business
2. Reviewing all alternative financing mechanisms for the development of the Project
3. Reviewing the current project design and program with a focus on capital and operating cost minimisation
4. Reviewing exploration activities and program/budget with a focus on ensuring only priority works are pursued
5. To defer all other non-priority works

Board of Directors

Non-Executive Chairman: Jim Askew

B.Sc. (Mining Engineering (Hon)), M.Sc (Engineering Sc.)

Mining engineer with broad international experience as CEO and Board member for mining, resource investment, contracting, software and mining service companies

Managing Director & CEO: Collin Ellison

B.Sc. (Mining), C.Eng,

35+ years experience in mine development & operations, former CEO of Goldbelt Resources and Asian Mineral Resources



Non-Executive Director: Ross Ashton

B.Sc. (Geology)

Previous founder/Managing Director of Red Back Mining Limited

Non-Executive Director: Dr. John Clarke

MBA, Ph.D (Metallurgy)

CEO of Banro Resources and former Executive Director of Ashanti Goldfields and CEO Nevsun Resources

Non-Executive Director: Hon. JH Mensah,

Economist

Former Minister of Finance & Chairman National Development Planning Commission of Ghana

Non-Executive Director: Dr. Michael Price

B.Sc (Mining Engineering), Ph.D (Mining Engineering)

30 years experience as a Mining Finance Consultant and Advisor based in London

Non-Executive Director: Peter Bradford

BAppSc Extractive Metallurgy

Metallurgist and corporate executive with +30 years' experience in gold and base metal operations in Africa and Australia. Former President and CEO of Copperbelt Resources Ltd and Golden Star Resources Ltd.

Non-Executive Director: Michael Anderson

Geologist with +20 years' experience in southern Africa and Australia. Current director of Taurus Funds Management, Base Resources Ltd, Hot Chile Ltd and Ampella Mining Ltd.

Corporate Summary

Listed on the TSX (code PMV), ASX (code PVM) and FSE (code PN3N.F)

Major Shareholders

Macquarie Bank	13.3%
Taurus SM Holdings	8.9%
Commonwealth Bank Group	6.7%
IOOF Holdings	6.4%
State Street Bank & Trust Co	6.2%
Waratah Investments	5.5%
Acorn Capital	5.4%
Board & Management	1.3%
Top 20 Shareholders ¹	76.5%

1. Top 20 % from Thomson Reuters Share Registry Analysis as at Q2 2013

Corporate Structure

Ordinary Shares ¹	414 M
Options & Warrants	14.8 M
Market Cap (C\$0.35) ²	~C\$144.9 M
Cash ³	~C\$102.3 M
Debt	Nil
Enterprise Value	~C\$42.6 M

1. As at 1 August 2013
2. As at 1 August 2013
3. As at 30 June 2013

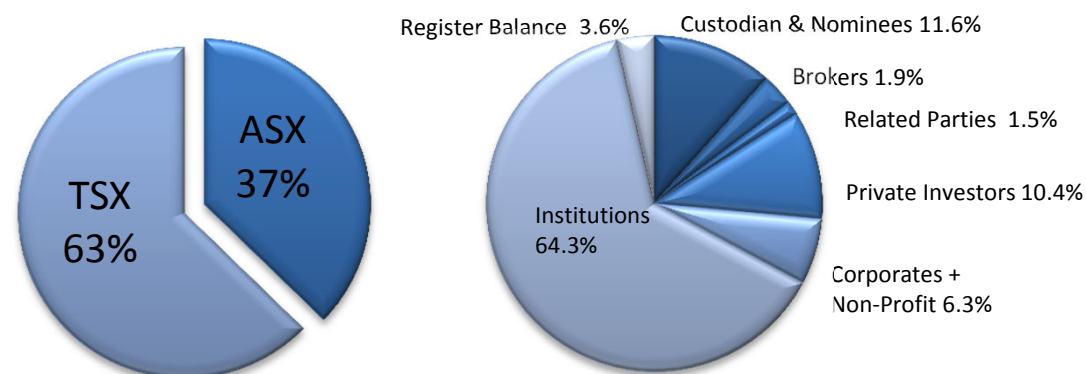


Chart Information sourced from Thomson Reuters Share Registry Analysis commissioned by PMI.



ID: — NKRII-086
m: 479.62 To: 485
E ID: — NKRII-086
m: 485.70m To: 492.8
E ID: — NKRII-086
m: 492.8 To: 498.00m



Appendices



PMI Gold – Where We Are Today

PMI has a clear vision to become a substantial West African gold producer with significant production from multiple centres

WORLD CLASS GOLD DISTRICT	DEVELOPMENT TO PRODUCTION	RESOURCE GROWTH	CORPORATE EXPERTISE
<ul style="list-style-type: none"> • Large exploration footprint of 580km² in two of Ghana's prolific gold belts. • Exploring 3 project areas with numerous high priority targets to follow-up. Offers potential for major new discoveries. 	<ul style="list-style-type: none"> • Obotan Gold Project Feasibility Study completed on 220kpa gold mine • Development <ul style="list-style-type: none"> - <i>Commissioning H2 2014</i> - <i>Full production H1 2015</i> 	<ul style="list-style-type: none"> • Solid reserve and resource base <ul style="list-style-type: none"> <u>Obotan</u> <ul style="list-style-type: none"> • Resources: 4.51Moz* • Reserves: 2.43Moz* <u>Kubi</u> <ul style="list-style-type: none"> • 233Koz M&I* • Targeting additional oxide resources within 15km radius of Obotan. 	<ul style="list-style-type: none"> • New Board members • Experienced management team with proven ability to build/operate mines • Worldwide shareholder base

Operating in the Local Community

STAKEHOLDER ENGAGEMENT

- Established Community Consultative Committee (CCC) as platform for community interaction and development
- Established sub-committee for land acquisition and crop compensation



Community consultation prior to exploration work commencing

COMMUNITY DEVELOPMENT

- Upgrading of community roads
- Construction of concrete culverts to replace wooden bridges
- Renovation of Manso Nkran Health Centre and provision of supplies
- Supporting community events: Annual Farmers Day
- Providing funds to local school for extra classes to improve educational standards
- Ensuring funds are spent on locally purchased goods and services to assist the regional economy

CULTURAL HERITAGE

- Supporting cultural activities through festivals and other traditional events
- Engagement with traditional rulers



CROP COMPENSATION

- Crop compensation provided where mining operations and exploration encroaches on farm land
- Compensation rates approved through stakeholder engagement with CCC



Manso Health Centre Renovation
Road Grading
Annual Farmers Day Support

Obotan Feasibility Study - Key Project Parameters

August 2012 Feasibility Study

Obotan Project Key Parameters (\$1300/oz, 5% Discount rate)	
Item	Description/Estimate
Proven and Probable Reserves	34.2Mt @ 2.21g/t (2.43Moz)
Open Pit Mining	Contract Mining
Conventional CIL Processing	3.0Mtpa Primary Ore 3.8 Mtpa Oxide Ore
Metallurgical Recovery	92.8%
Average Annual Gold Production	221,500oz (over first five years)
Cash Operating Costs	US\$626/oz
Plant and Infrastructure Capital	US\$214.4M
Pre-Strip Capital	US\$82.2M
Total Capital	US\$296.6

Pre-Tax NPV	US\$614M
Post-Tax NPV	US\$387
Pre-Tax IRR	35%
Post Tax IRR	27%
Pre-tax Operating Cash Flow	US\$953M
Total Project Sustaining Mine Capital	\$56.2M
Capital Payback Period	2.9 Years
Construction Commencement	H2 2013
Full Gold Production	H1 2015

Obotan Feasibility Study - Cost Overview

Capital Cost Breakdown

Item	US\$M
Process plant direct	\$83.6
Infrastructure	\$49.2
Indirect	\$26.1
Spares and First fills	\$8.9
Owner's costs	\$26.2
Pre-Strip	\$82.2
Mining Establishment	\$20.3
Initial Capital	\$296.6
Deferred & sustaining capital	\$56.2

Life of Mine Operating Cost Breakdown

Item	US\$/t (excl. Pre-strip)
Mining	\$24.84
Processing	\$13.82
General & Administration	\$2.65
Sub Total	\$41.31
Bullion & Refining	\$0.35
Royalties	\$6.01
Total Cash Operating Cost	\$47.67

- Feasibility Study completed to high-level of accuracy
- Costs based on estimates from 5 mining contractors and firm tenders from suppliers
- Competitive C1 and total cash operating costs
- Delivering strong cash operating margins

Obotan Feasibility Study - Financial Evaluation

Financial Evaluation

	@ US\$1300/oz	@ US\$1600/oz
Project Revenue	\$2.9 Billion	\$3.61 Billion
Project pre- tax Cash Flow	\$953 Million	\$1.58 Billion
Project pre-tax NPV (5% discount rate)	\$614 Million	\$1.07 Billion
Project pre-tax NPV (8% discount rate)	\$472 Million	\$856 Million
Project pre-tax IRR	35%	54%
Project post-tax NPV (5% discount rate)	\$387 Million	\$686 Million
Project post-tax NPV (8% discount rate)	\$290 Million	\$542 Million
Project post-tax IRR	27%	43%

The strong economics of the Obotan Project provide a robust investment case, giving PMI confidence it will be able to secure project funding and make a Final Investment Decision in H2 2013

Obotan Reserve Estimate (August 2012)

Mineral Reserves (August 2012)			
Reserve Classification	Tonnes (Millions)	Au (g/t)	Au ozs (Millions)
Proven	14.8	2.39	1.14
Probable	19.4	2.08	1.30
Total Proven + Probable	34.2	2.21	2.43
Nkran:			
Proven	11.5	2.47	0.92
Probable	14.6	2.17	1.02
Total for Nkran:	26.1	2.30	1.93
Adubiaso:			
Proven	1.20	2.80	0.10
Probable	1.30	2.62	0.11
Total for Adubiaso:	2.50	2.70	0.22
Abore:			
Proven	2.10	1.70	0.11
Probable	1.90	1.70	0.10
Total for Abore:	4.00	1.70	0.22
Asuadai			
Proven	0.0	0.0	0.0
Probable	1.60	1.22	0.06
Total for Asuadai:	14.8	2.39	1.14

- The Oreology Mineral Reserve was estimated by construction of a block model within constraining wireframes based on Measured and Indicated resources.
- The Reserve is reported at lower a cut-off grade of 0.5g/t Au, which defines the continuous/semi-continuous mineralized zone potentially amenable to the low grade, bulk tonnage mining scenario currently being considered by PMI.
- The grades and Reserve tonnes have been modified by an average ore loss and mining dilution of 4.8% with a mining dilution grade of 0.0g/t gold
- An average metallurgical recovery of 92.8% was used in defining the optimal pit shell
- The Mineral Reserves are based on the March 2012 Mineral resource reports for the Nkran, Adubiaso, Abore and Asuadai deposits
- All tonnes reported are dry tonnes
- The base case pit optimization utilized a US\$1,300/oz gold price
- Mineral Reserves are reported in accordance with the NI 43-101 & JORC.

Information that relates to Mineral Reserves at the Obotan Gold Project is based on a reserve estimate that has been carried out by Mr Ross Cheyne, a full time employee of Oreology Mining Consultants. Mr Cheyne is a Fellow of the Australasian Institute of Mining and Metallurgy (FAusIMM) and has sufficient experience which is relevant to the style of mineralization and type of deposit under consideration and to the activity undertaken to qualify as a Competent Person as defined in the 2004 Edition of the Australasian Code for Reporting of Exploration Results, Mineral Resources and Ore Reserves (JORC), and as a Qualified Person (by ROPO) as defined in terms of NI43-101 standards for resource estimate of gold. Mr Cheyne has more than 5 years' experience in the field of resource/reserve estimation and consent to and approve the inclusion of matters based on information in the form and context in which it appears.

Obotan Resource Estimate (March 2012)

SRK March 2012 Resource Estimate (based on a 0.5 g/t Au lower cut-off grade)

Deposit	Measured			Indicated			Measured & Indicated		
	Tonnes (millions)	Grade (g/t Au)	Ozs (millions)	Tonnes (millions)	Grade (g/t Au)	Ozs (millions)	Tonnes (millions)	Grade (g/t Au)	Ozs (millions)
Nkran	11.74	2.55	0.96	20.41	2.12	1.39	32.15	2.28	2.35
Adubiaso	1.50	2.98	0.14	2.67	2.41	0.21	4.17	2.59	0.35
Abore	2.33	1.78	0.13	3.70	1.53	0.18	6.03	1.60	0.31
Asuadai	n/a	n/a	n/a	2.44	1.28	0.10	2.44	1.28	0.10
TOTAL	15.57	2.47	1.23	29.21	2.00	1.88	44.79	2.16	3.11

Deposit	Inferred		
	Tonnes (millions)	Grade (g/t Au)	Ozs (millions)
Nkran	14.47	2.21	1.05
Adubiaso	1.25	1.91	0.08
Abore	3.92	1.50	0.19
Asuadai	2.00	1.33	0.08
TOTAL	21.91	1.99	1.40

Resource figures for each of the Obotan deposits based on a 0.5 g/t Au lower cut-off grade. All resource numbers are rounded to 2 decimal places- 10,000 tonnes.

Information that relates to Mineral Resources at the Obotan Gold Project is based on a resource estimate that has been audited by Mr Peter Gleeson, who is a full time employee of SRK Consulting, Australia. Mr Gleeson is a Member of the Australian Institute of Geoscientists (MAIG) and has sufficient experience which is relevant to the style of mineralisation and type of deposit under consideration and to the activity which he is undertaking to qualify as a Competent Person as defined in the 2004 Edition of the Australasian Code for Reporting of Exploration Results, Mineral Resources and Ore Reserves' and as defined in terms of NI43-101 standards for resource estimation of gold. Mr Gleeson has more than 5 years' experience in the field of Exploration Results and of resource estimation in general. Mr Gleeson consents to the inclusion of matters based on information in the form and context in which it appears.

Kubi Resource Estimate (December 2010)

PMI Gold NI43-101/JORC Mineral Resources Estimate			
Category	Tonnage Tonnes (million)	Grade (Au g/t)	Cont'd Gold Ounces
Measured	0.66	5.30	112,000
Indicated	0.66	5.65	121,000
Total Measured and Indicated	1.32	5.48	233,000
Inferred	0.67	5.31	115,000

Identified Mineral Resource (2.0g/t Au Cut-off)

Material Type	Tonnage Tonnes (million)	Grade (Au g/t)	Cont'd Gold Ounces
Oxide	0.12	5.07	19,000
Fresh Rock	1.88	5.44	329,000

Mineral Resource Estimates by Material Type (2.0g/t Au Cut-off)

The information in this presentation that relates to Mineral Resources at the Kubi Main Deposit, Ghana, is based on a resource estimate that has been audited by Simon Meadows Smith, who is a full time employee of SEMS Exploration Services Ltd, Ghana. Simon Meadows Smith is a Member of the Institute of Materials, Minerals and Mining (IM03), London and has sufficient experience which is relevant to the style of mineralisation and type of deposit under consideration and to the activity which he is undertaking to qualify as a Competent Person as defined in the 2004 Edition of the Australasian Code for Reporting of Exploration Results, Mineral Resources and Ore Reserves, and under NI43-101. Simon Meadows Smith consents to the inclusion in the presentation of the matters based on information in the form and context in which it appears.

Contacts

Email: info@pmigoldcorp.com

Web: www.pmigoldcorp.com

Contact: Collin Ellison, Managing Director & CEO

Centre: Jim Askew (Chairman), Left: Mike Gloyne (COO) & Right: Michael Anderson - with the Ghana Exploration Team at Dynamite Hill (Obotan)



PMI GOLD
CORPORATION

Perth, Australia:

PMI Gold Corporation

680 Murray Street

West Perth WA 6005

Ph. +61 (0)8 6188 7900

Fx. +61 (0)8 9321 8881

Vancouver, Canada:

PMI Gold Corporation

#408 – 837 West Hastings Street

Vancouver BC V6C 3N6

Ph. +1 604 684 6264

Fx. +1 604 684 6242

Accra, Ghana:

Adansi Gold Company (Ghana) Limited

10 Quarcoo Lane

Roman Ridge

Private Mail Bag CT471, Cantonments

Ph. +233 (0)302 780818