

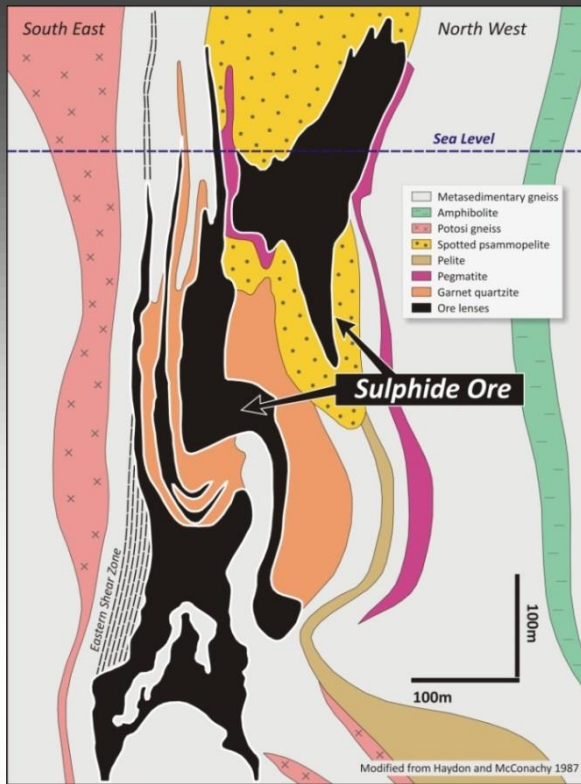
# SILVER CITY MINERALS LIMITED

ABN 68 130 933 309

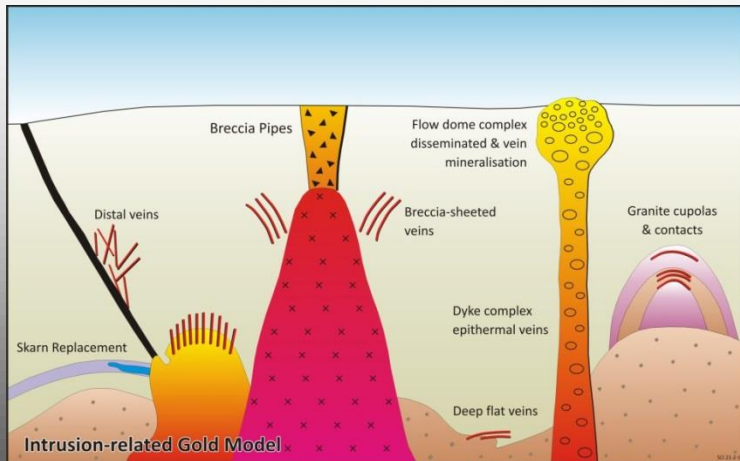
ASX Code: SCI

## **Annual General Meeting St Leonards 21 November 2013**

# ABOUT SILVER CITY



- Base and precious metal explorer with focus on world class mining camps
- Floated 2011; raised \$9.8 million
- Broken Hill: massive sulphides (silver, lead, zinc)
- North Queensland: intrusion-related (gold, copper)
- Money in the ground: 75% (2012) and 48% (2013) of exploration budget on drilling
- Strong tenure position



# INVESTMENT IN SILVER CITY



- **STRONG BOARD AND SMALL TEAM**
- **SYSTEMATIC AND COST-EFFECTIVE APPROACH TO EXPLORATION: A FOCUS ON DRILLING**
- **LARGE, UNDER-EXPLORED TENURE POSITION IN WORLD CLASS MINING CAMP: BROKEN HILL**
- **LEAD-ZINC-SILVER INTERSECTIONS AT ALLENDALE**
- **POTENTIAL FOR ANOTHER “LINE OF LODGE” AT RAZORBACK WEST**
- **NEW PROJECT STREAM. VTEM RESULTS PENDING**
- **UNIQUE GOLD PROJECT WITH OUTSTANDING GEOCHEMICAL AND GEOPHYSICAL TARGETS, NEAR CHARTERS TOWERS: SELLHEIM**

# SILVER CITY MINERALS LIMITED

ASX Code:	SCI
Issued Shares:	98.0 million
Listed Options:	29.2 million
Unlisted Options:	12.2 million
Market Cap:	\$7.0 million
Cash:	\$4.1 million

## Major Shareholders:

The Sentient Group:	17.45%
PlatSearch Group:	14.58%
Fitel Nominees:	5.68%
Top 20 :	64.34%
Share Price:	High \$0.21    Low \$0.045



# SILVER CITY MINERALS PROJECTS



➤ Sellheim Gold Project, Queensland

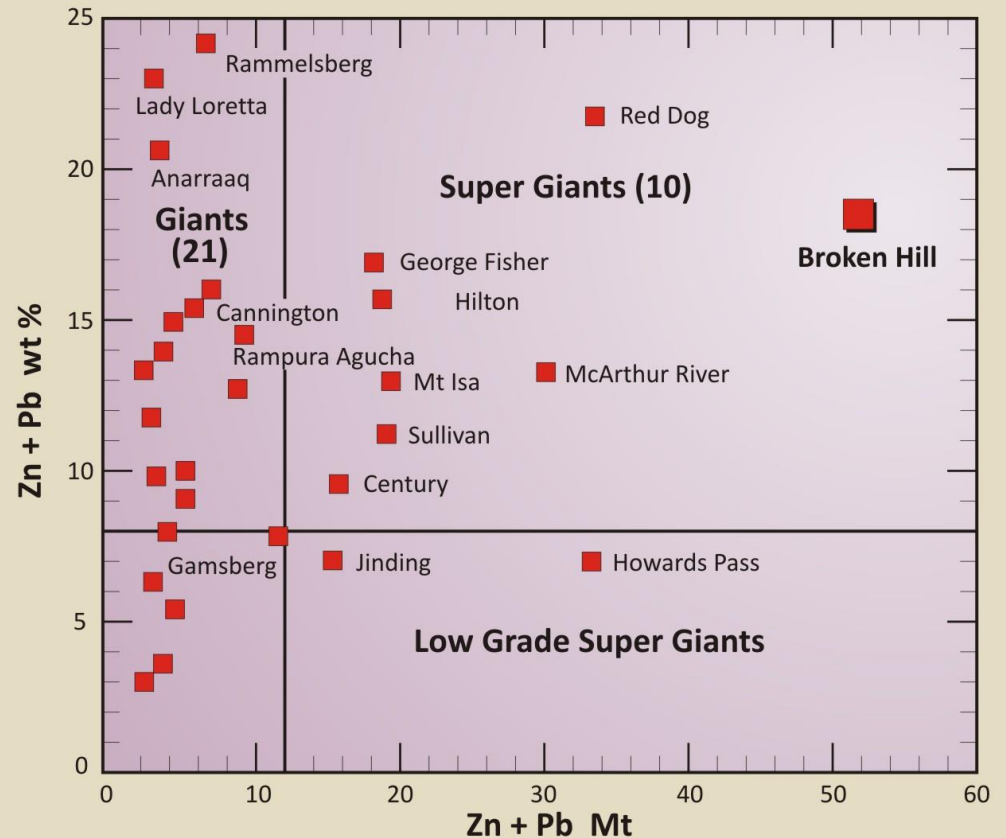
➤ Broken Hill Base-metals and Silver,  
NSW



Where does one look for

.....elephants

SILVER CITY MINERALS LIMITED



ref: Large et al 2002

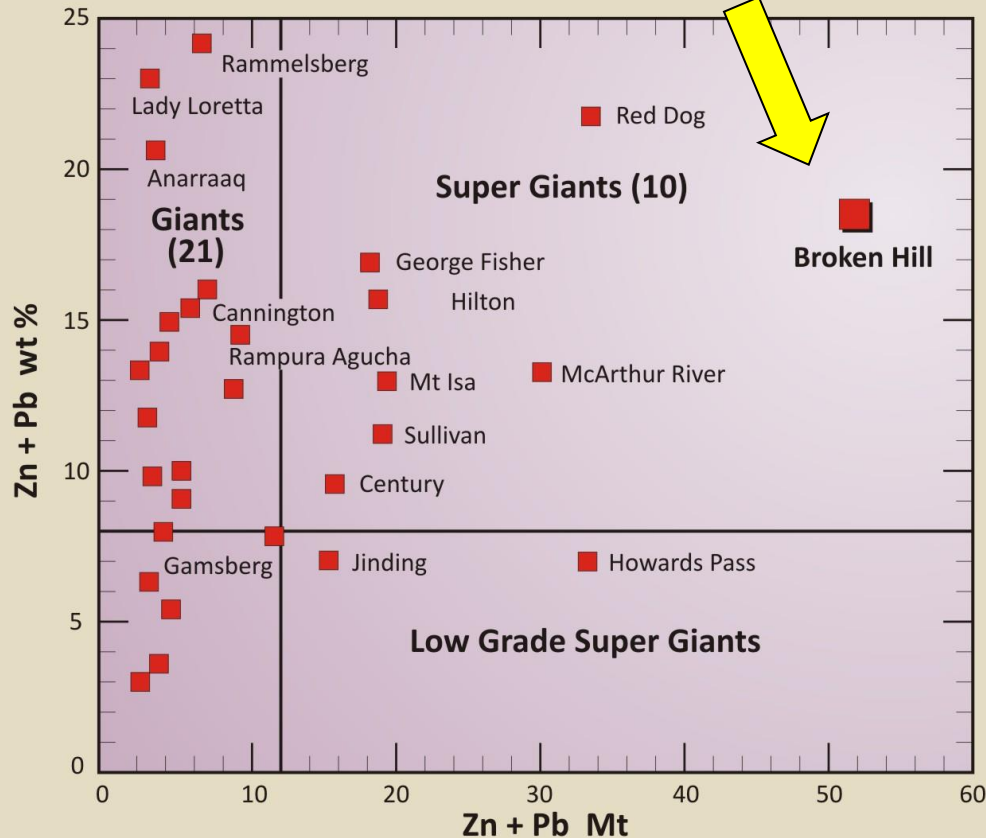
Stratiform Sediment Hosted Zn-Pb-Ag Deposits



# Where does one look for + 1 Billion ounces Silver

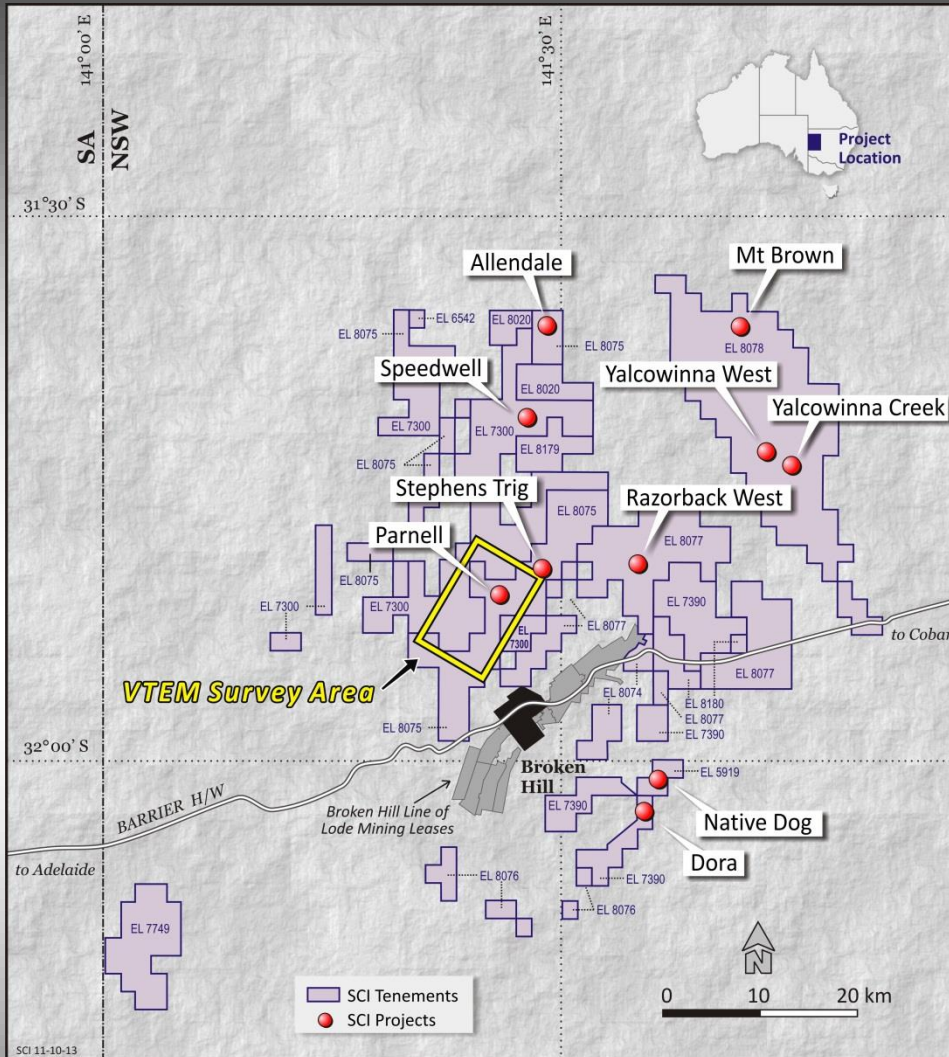
.....elephants

SILVER CITY MINERALS LIMITED



ref: Large et al 2002

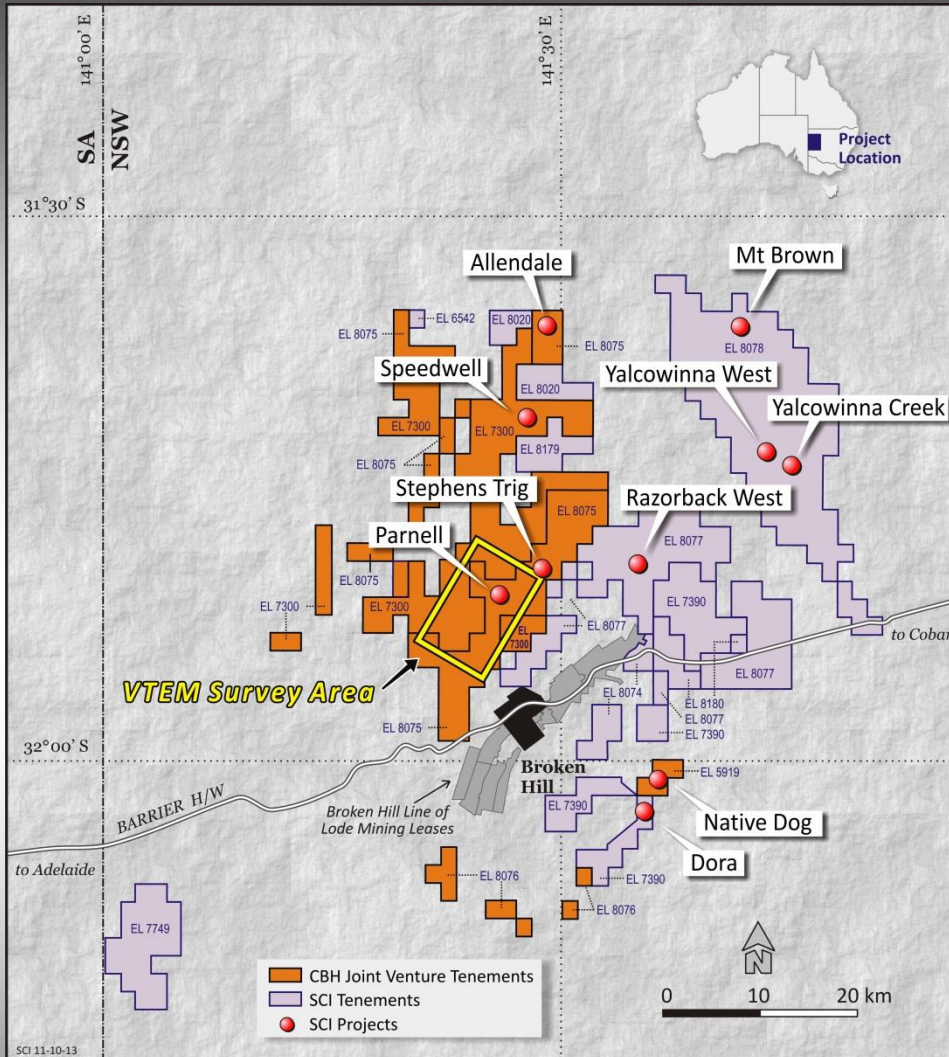
# SILVER CITY MINERALS BROKEN HILL



- Strong tenure position
- Secure title with strong local partnerships (CBH, GCR)
- Mining Centre – Broken Hill
- Good infrastructure
- **Total area 1300 sq km**

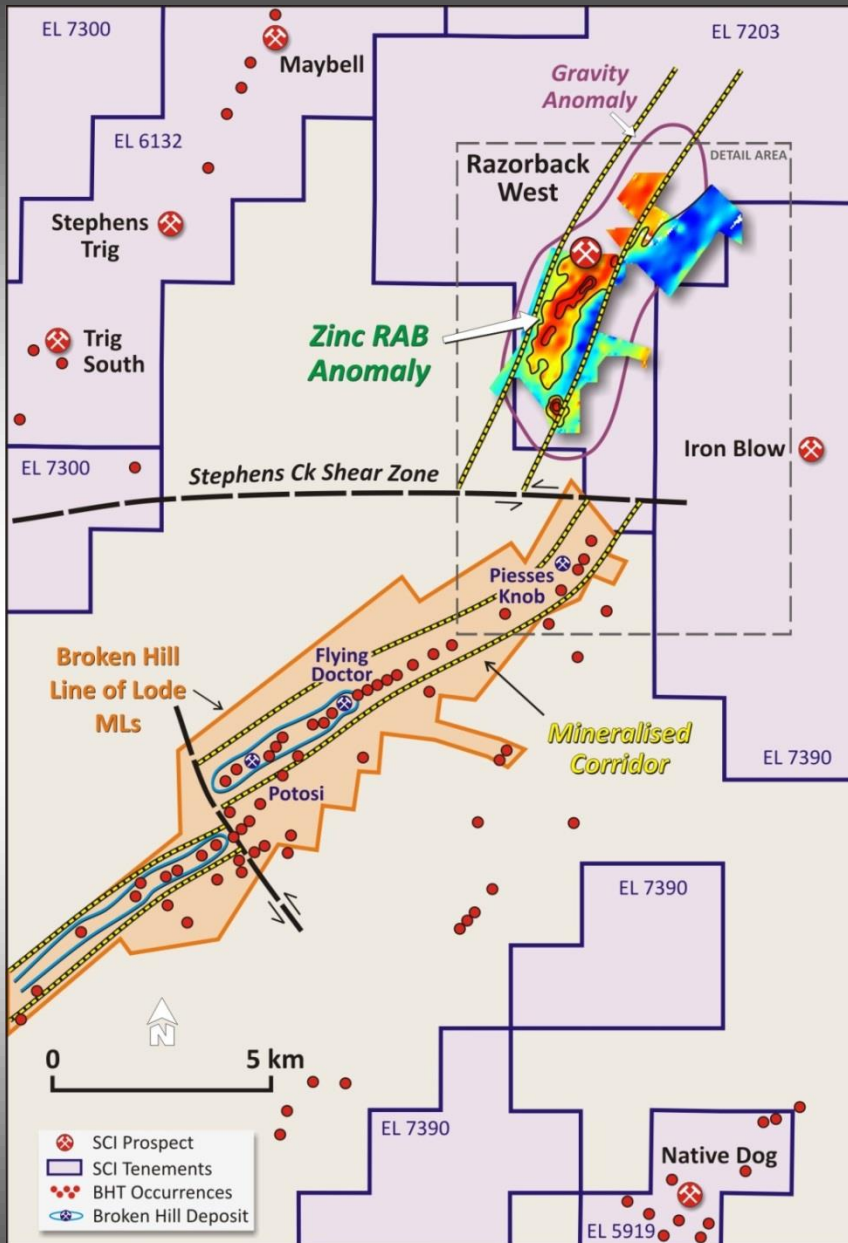


# SILVER CITY MINERALS BROKEN HILL



- 50% of tenure in JV with CBH
- ELs 5919 & 8075: CBH (25%), SCI (75%). EL 7300 CBH (15%), SCI (76.5%) and EGC (8.5%). CBH is carried to commencement of a Definitive Feasibility Study and has mineral concentrate offtake rights.
- Good working relationship
- Enables more flexible exploration approach

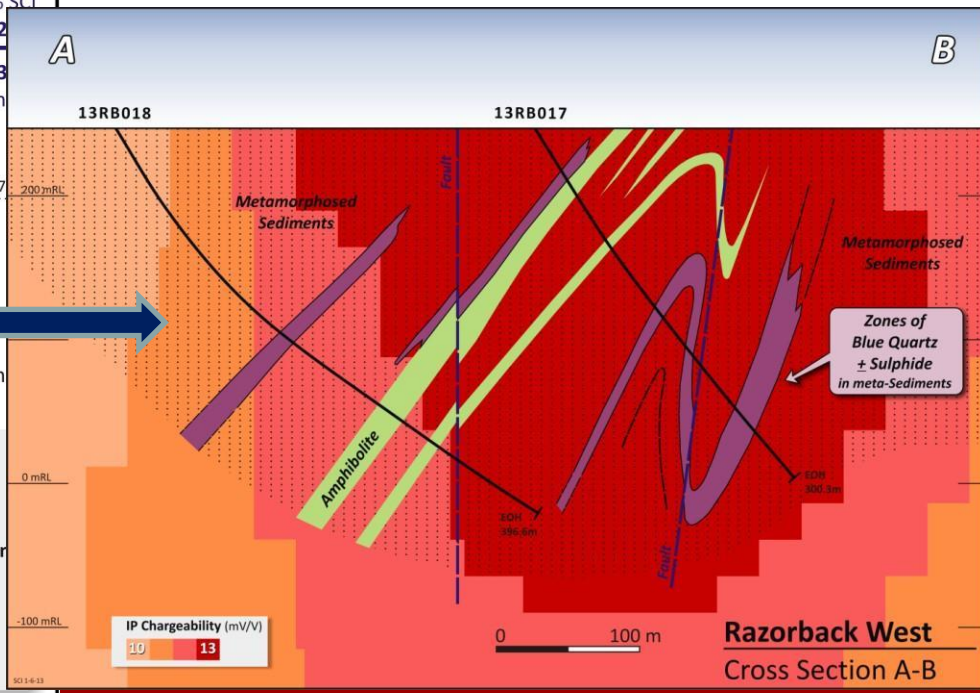
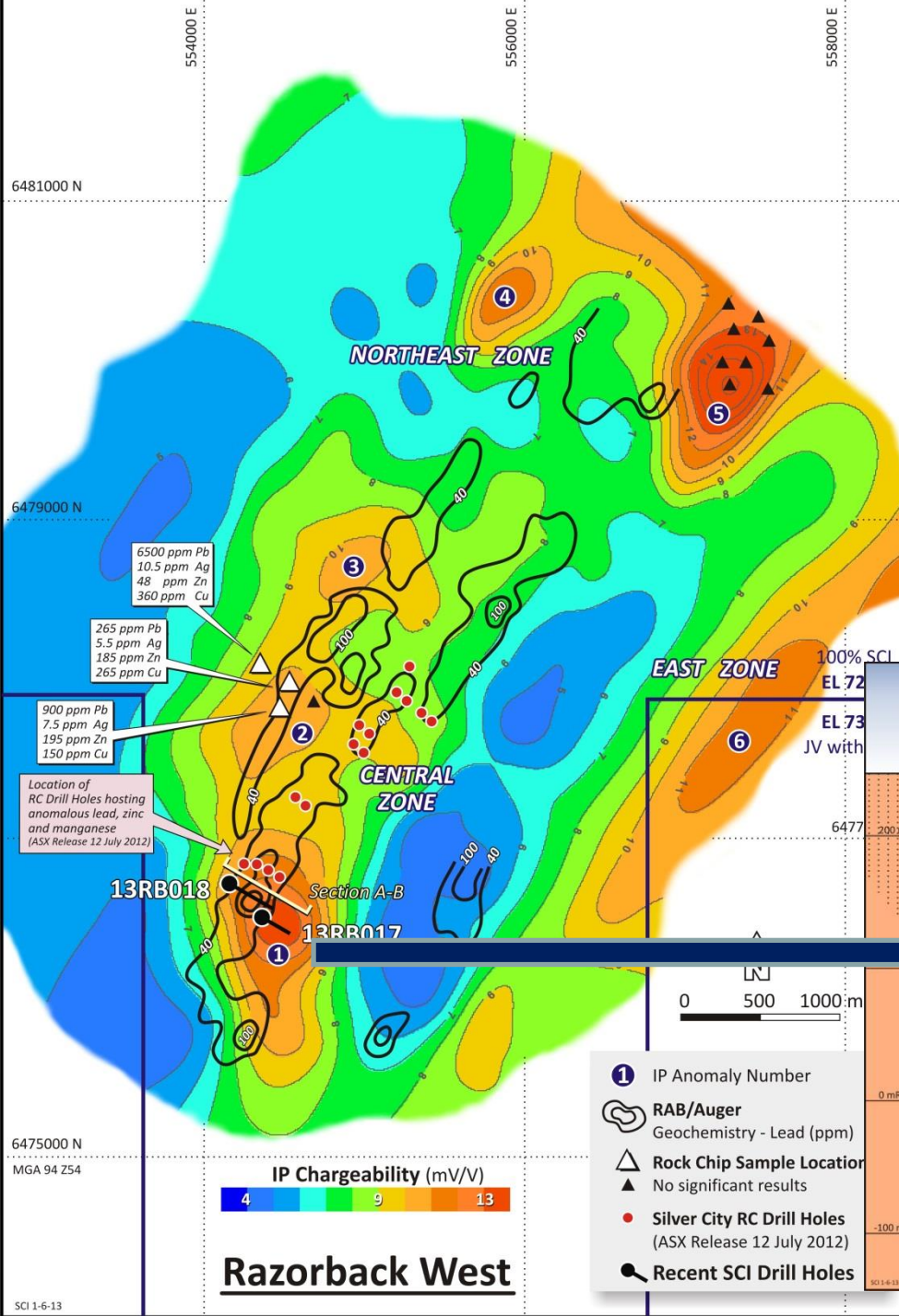
# RAZORBACK WEST



- Potential northern extension of Broken Hill Line of Lode. Offset along Stephens Creek Shear Zone
- 90% of anomaly under thin cover
- Preliminary drilling has located lode rock sequences with veinlet and disseminated zinc and lead sulphides
- ***Ground geophysical surveys planned***

# RAZORBACK WEST

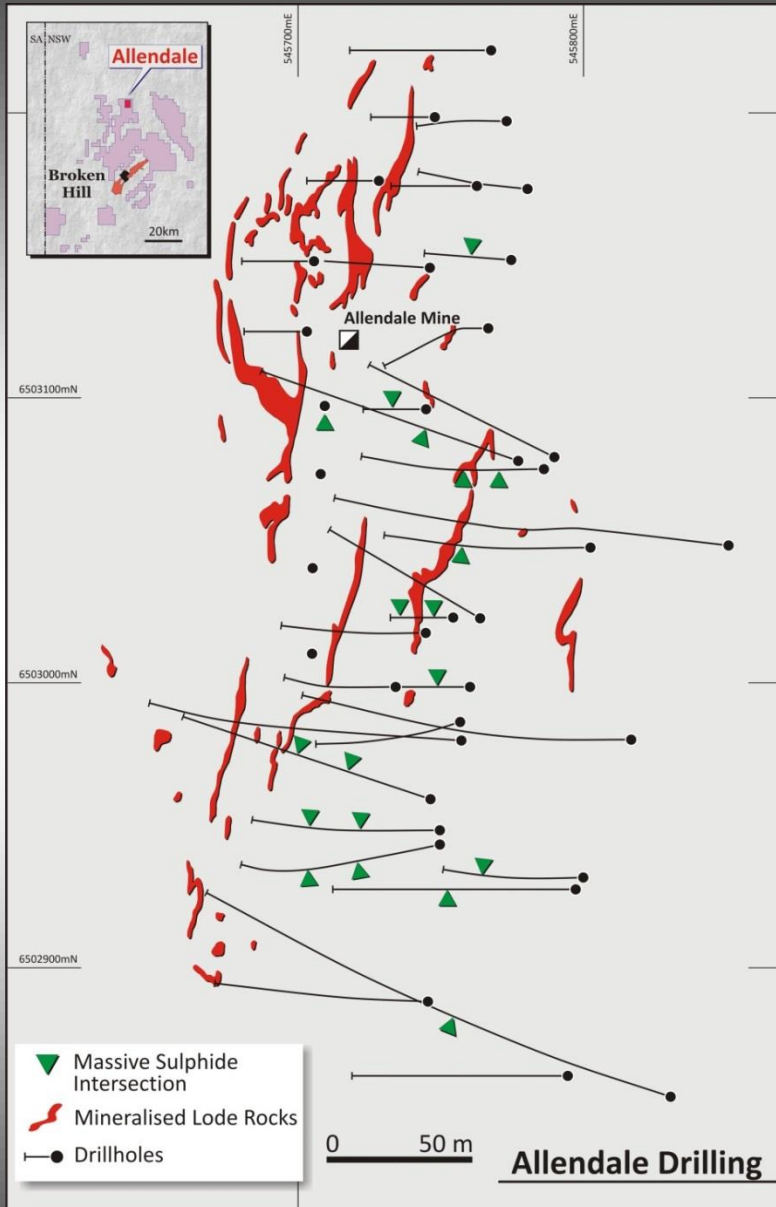
- Large coincident Gravity, Induced Polarisation and Geochemical Anomalies
- Right rock sequence with disseminated sulphides



# ALLENDALE MINE

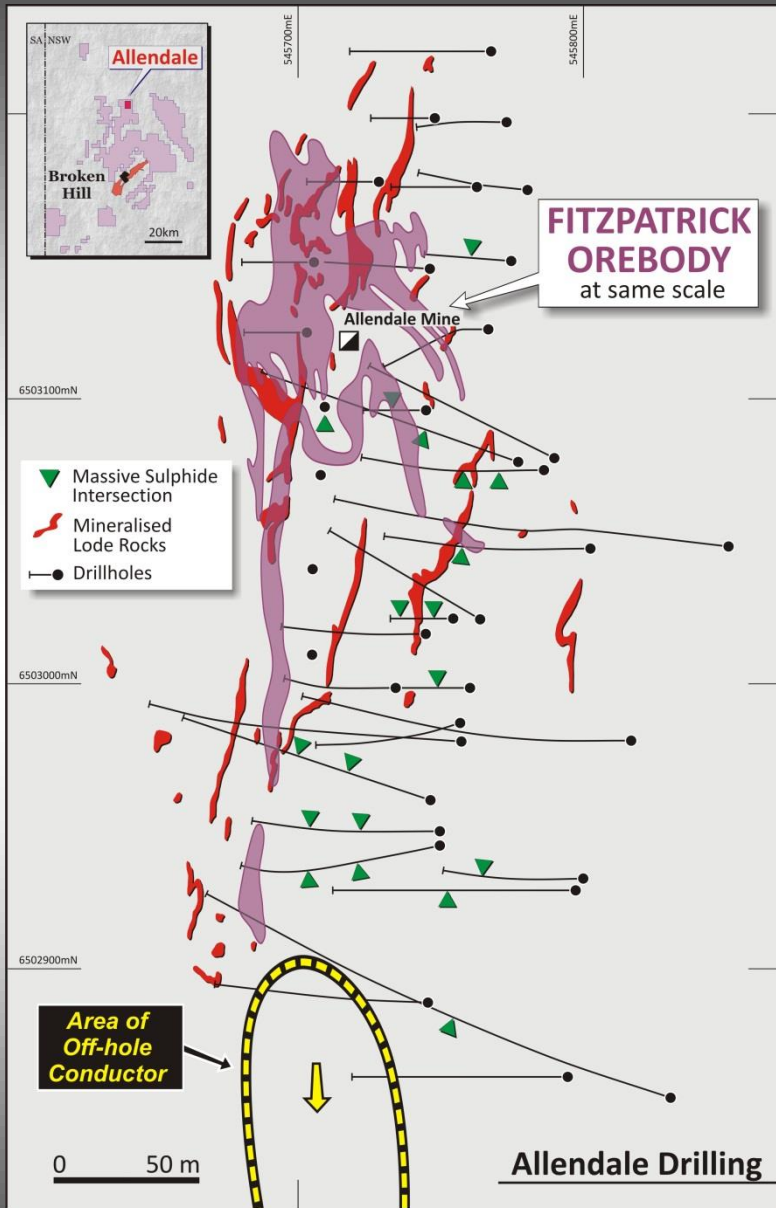
Drilling reported to date. Multiple high grade intersections.

- **10m at 4.1% Pb, 12% Zn, 29 g/t Ag**
- **2m at 8.4% Pb, 11.5% Zn, 39.2 g/t Ag**
- **2m at 5.0% Pb, 6.8% Zn, 44.3 g/t Ag**
- **3m at 4.0% Pb, 9.2% Zn, 31 g/t Ag**
- **7m at 2.5% Pb, 2.3% Zn, 21 g/t Ag**
- **9m at 2.5% Pb 3.1% Zn, 19.7 g/t Ag**
- **5m at 3.5% Pb, 5.8% Zn, 37 g/t Ag**
- **10m at 3.4% Pb, 6.2% Zn, 26 g/t Ag**



# ALLENDALE MINE

Drilling reported to date. Multiple high grade intersections.



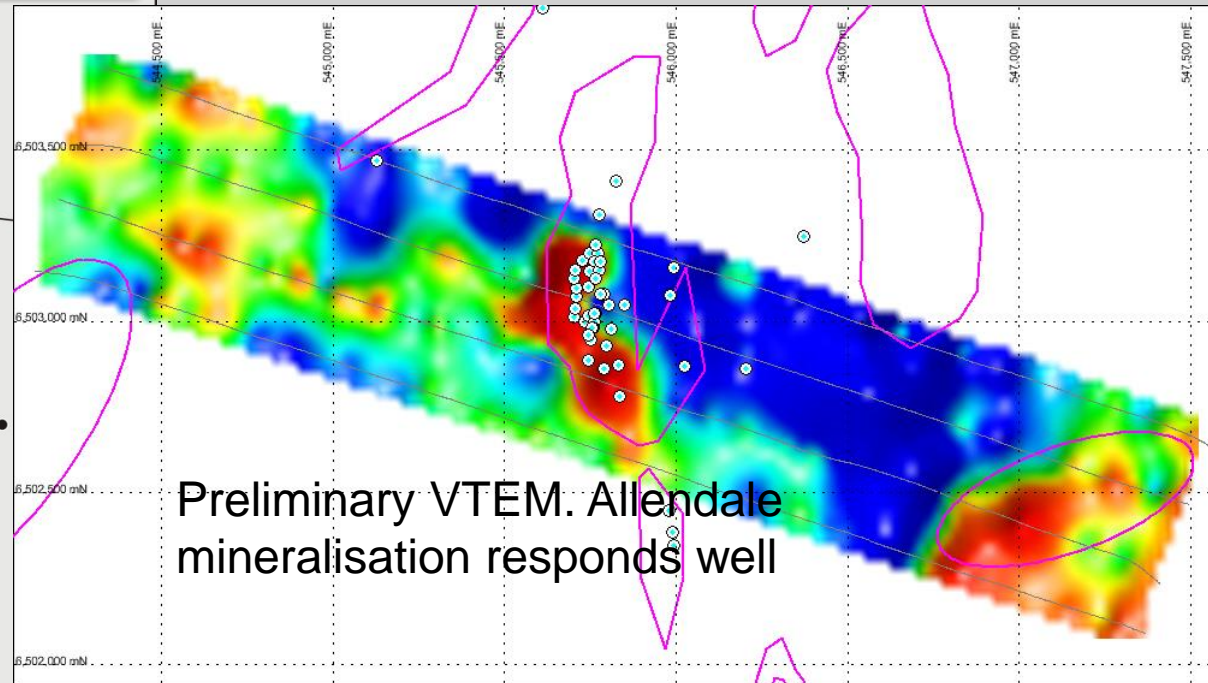
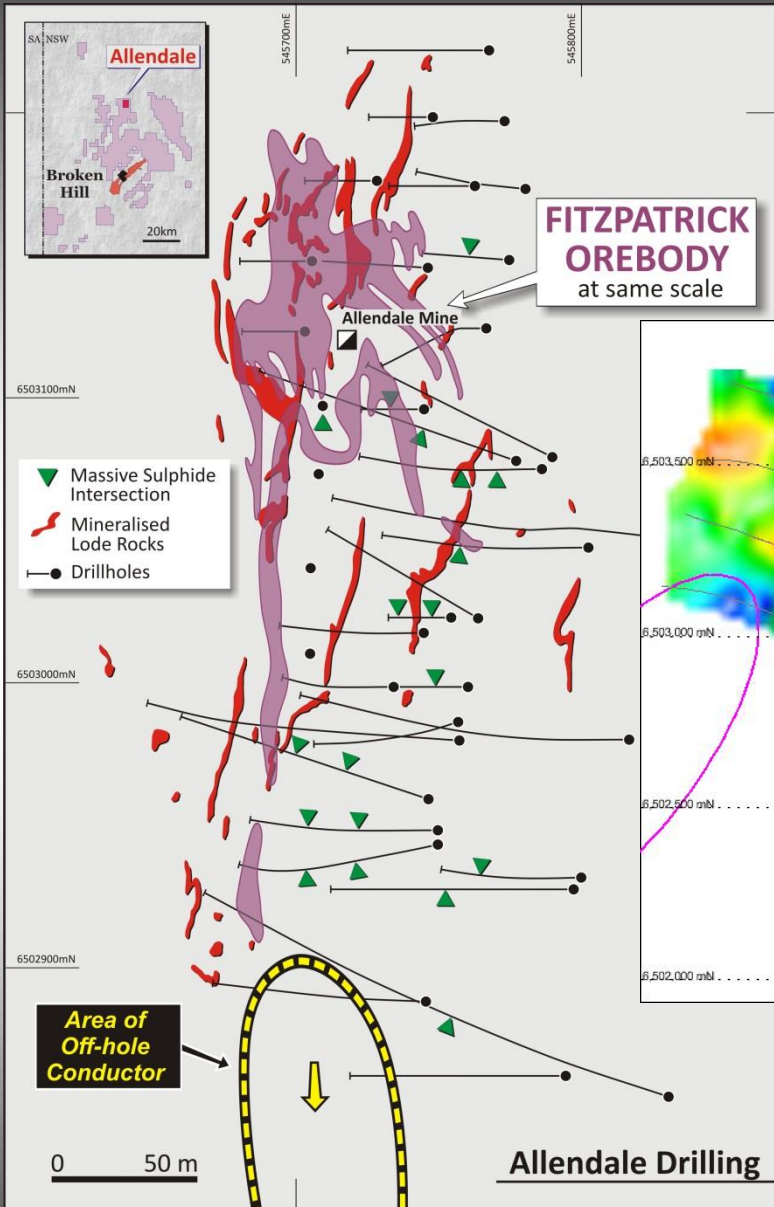
- 10m at 4.1% Pb, 12% Zn, 29 g/t Ag
- 2m at 8.4% Pb, 11.5% Zn, 39.2 g/t Ag
- 2m at 5.0% Pb, 6.8% Zn, 44.3 g/t Ag
- 3m at 4.0% Pb, 9.2% Zn, 31 g/t Ag
- 7m at 2.5% Pb, 2.3% Zn, 21 g/t Ag
- 9m at 2.5% Pb 3.1% Zn, 19.7 g/t Ag
- 5m at 3.5% Pb, 5.8% Zn, 37 g/t Ag
- 10m at 3.4% Pb, 6.2% Zn, 26 g/t
- 6m at 10.4% Zn...Off-hole conductor

➤ **Now looking deeper and along strike: FOUR VTEM LINES FLOWN**

# ALLENDALE MINE

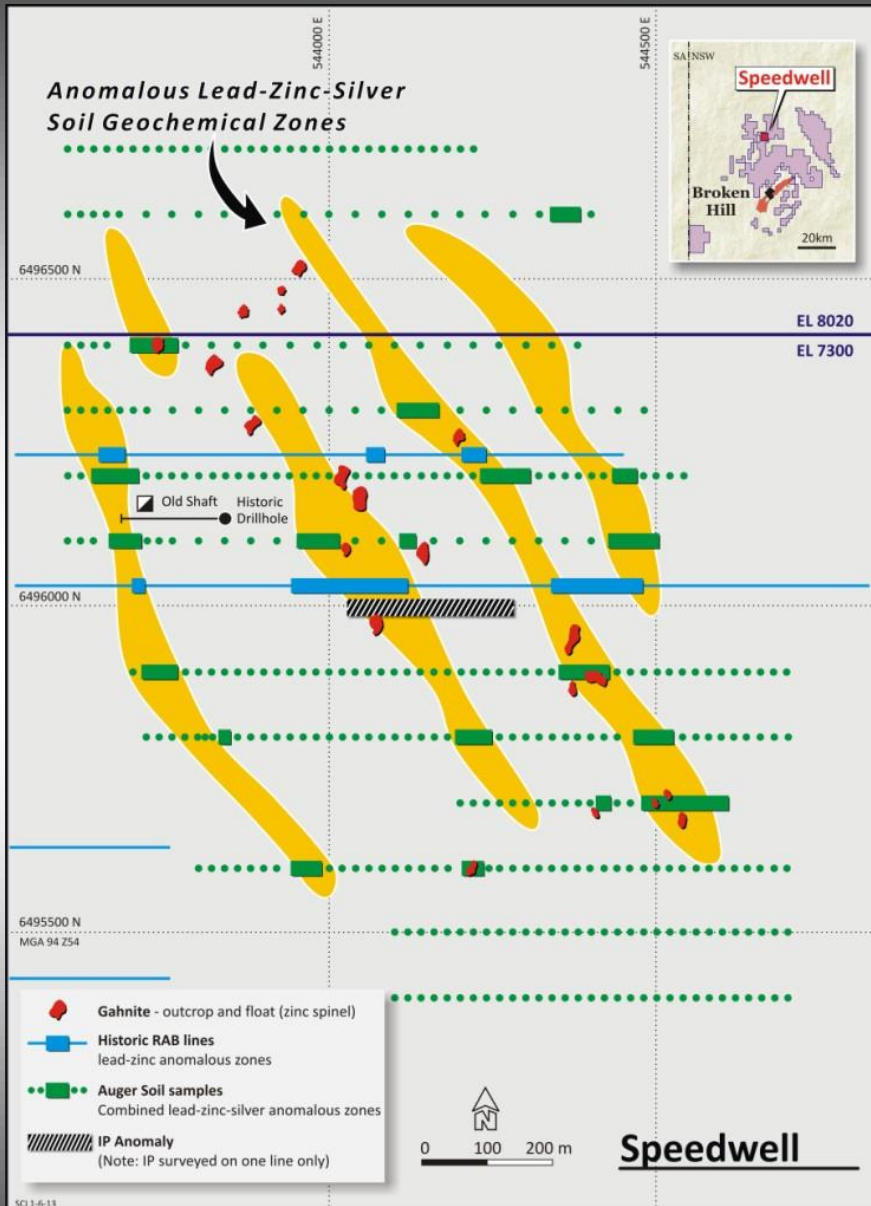
Drilling reported to date. Multiple high grade intersections.

➤ **10m at 4.1% Pb, 12% Zn, 29 g/t Ag**



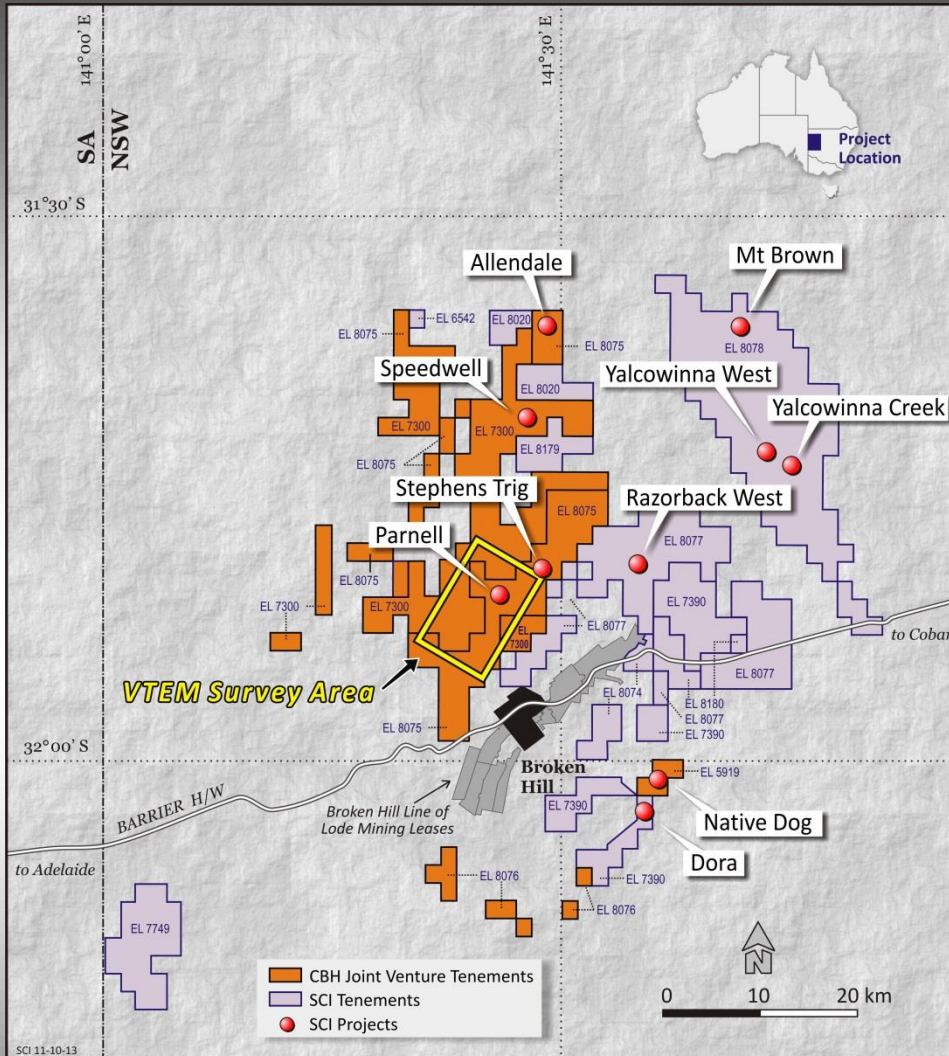
➤ **Now looking deeper and along strike: FOUR VTEM LINES FLOWN**

# SPEEDWELL



- New project
- Historic RAB drilling and IP anomalies on wide-spaced lines
- Area of zinc spinel (gahnite)
- SCI soil survey located four broad zones of lead-silver-zinc anomalism up to 1 kilometre long
- Sample at old mine dump returned 12.5% lead, 3.6% zinc and 65.9 ppm silver
- **Detailed geology and RAB drilling scheduled**

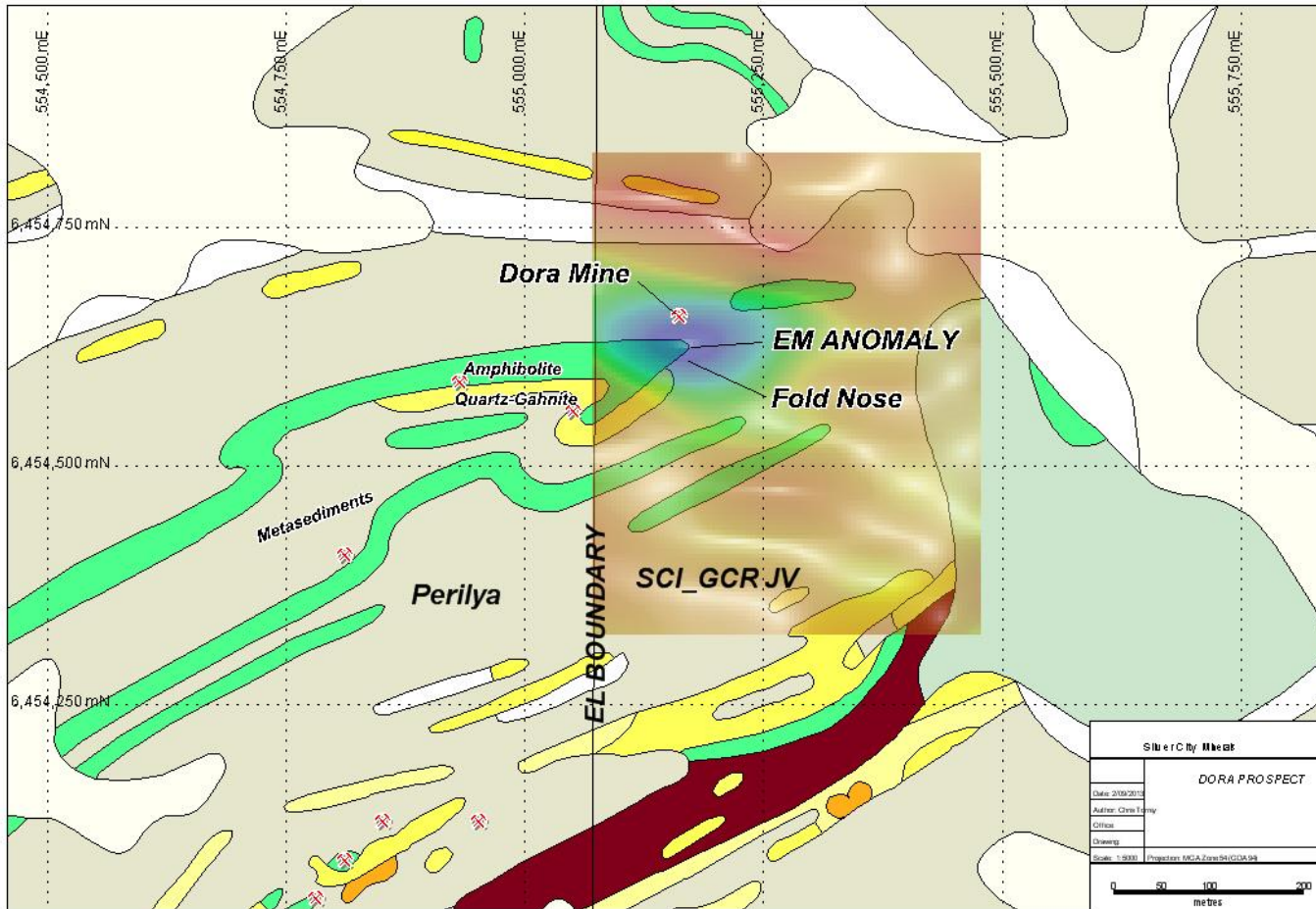
# SILVER CITY MINERALS BROKEN HILL



- 50% of tenure in JV: CBH (25%) SCI (75%). CBH is carried to commencement of a Definitive Feasibility Study
- Good working relationship
- Enables more flexible exploration approach

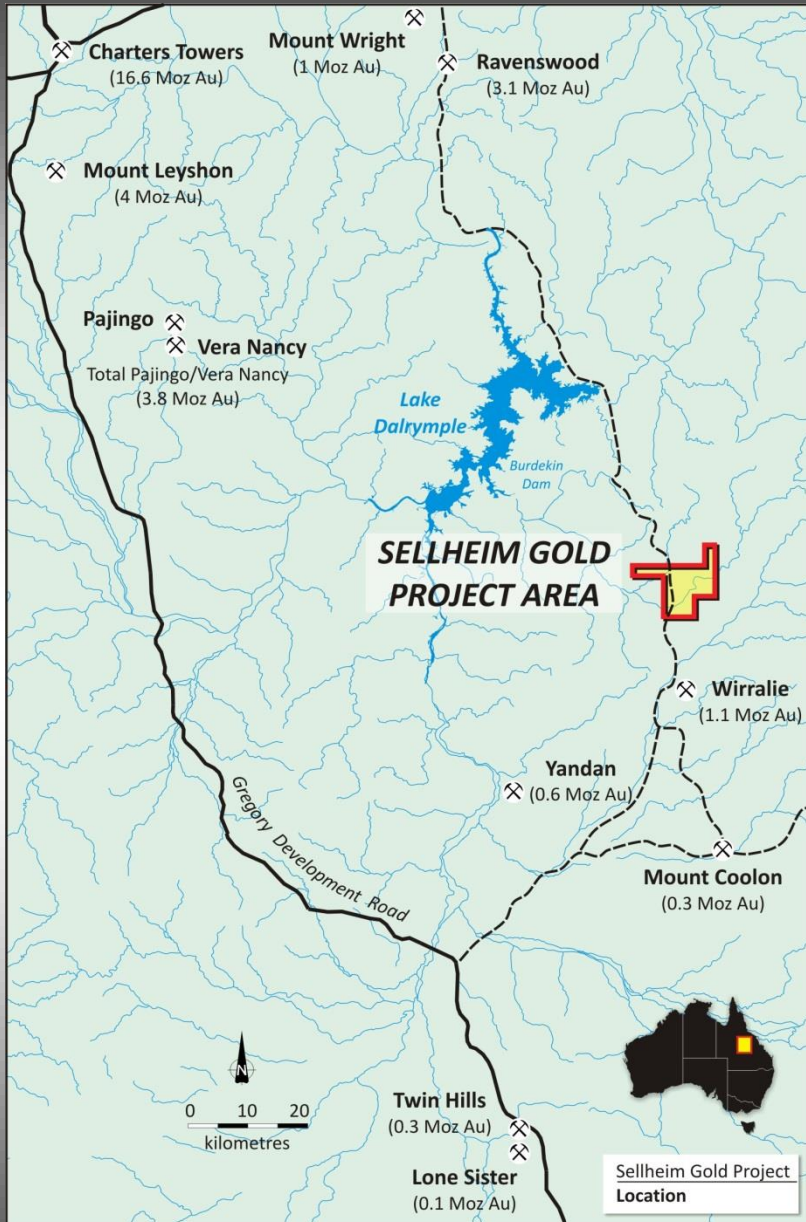


# SILVER CITY MINERALS DORA PROJECT

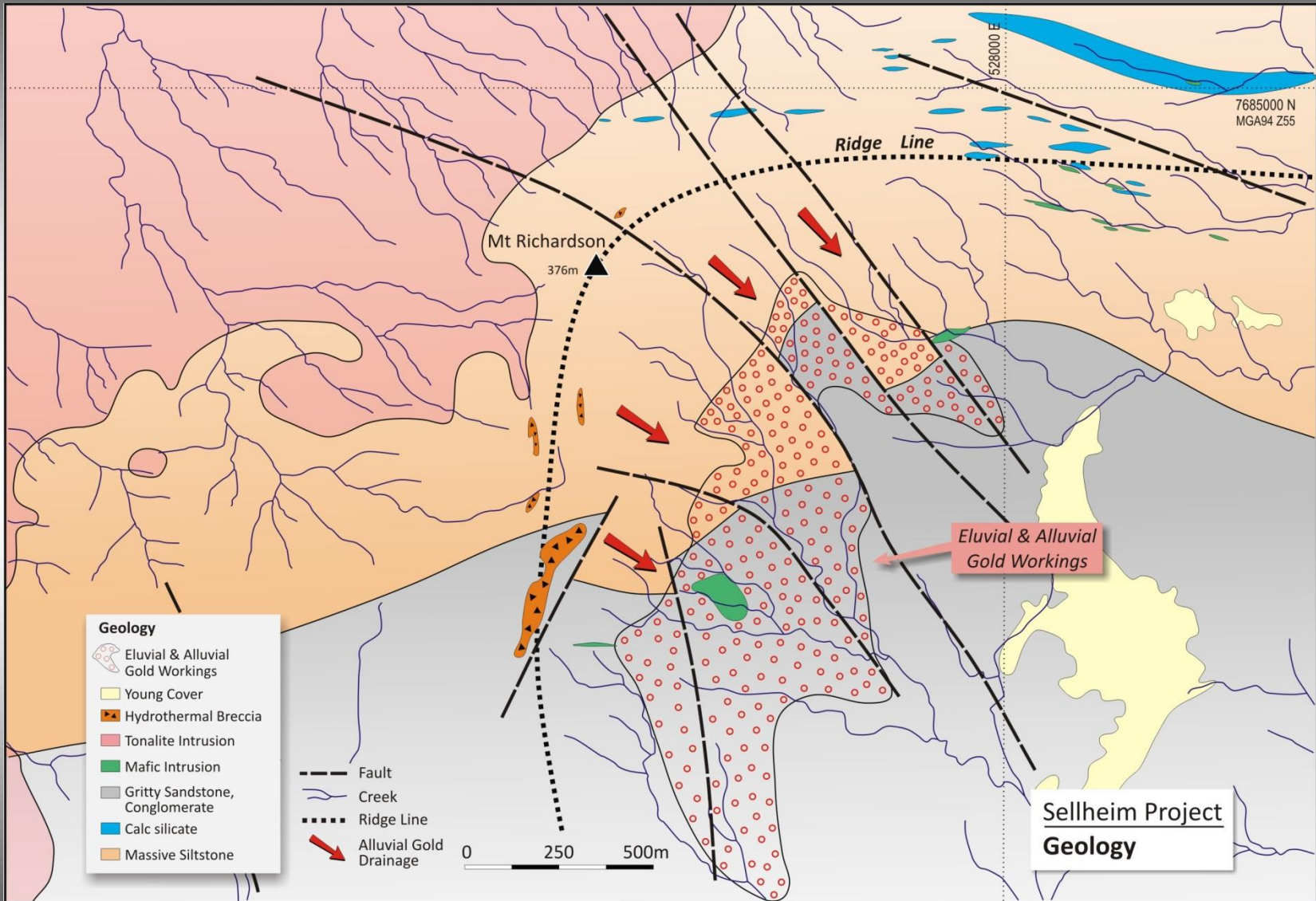


# SELLHEIM PROJECT

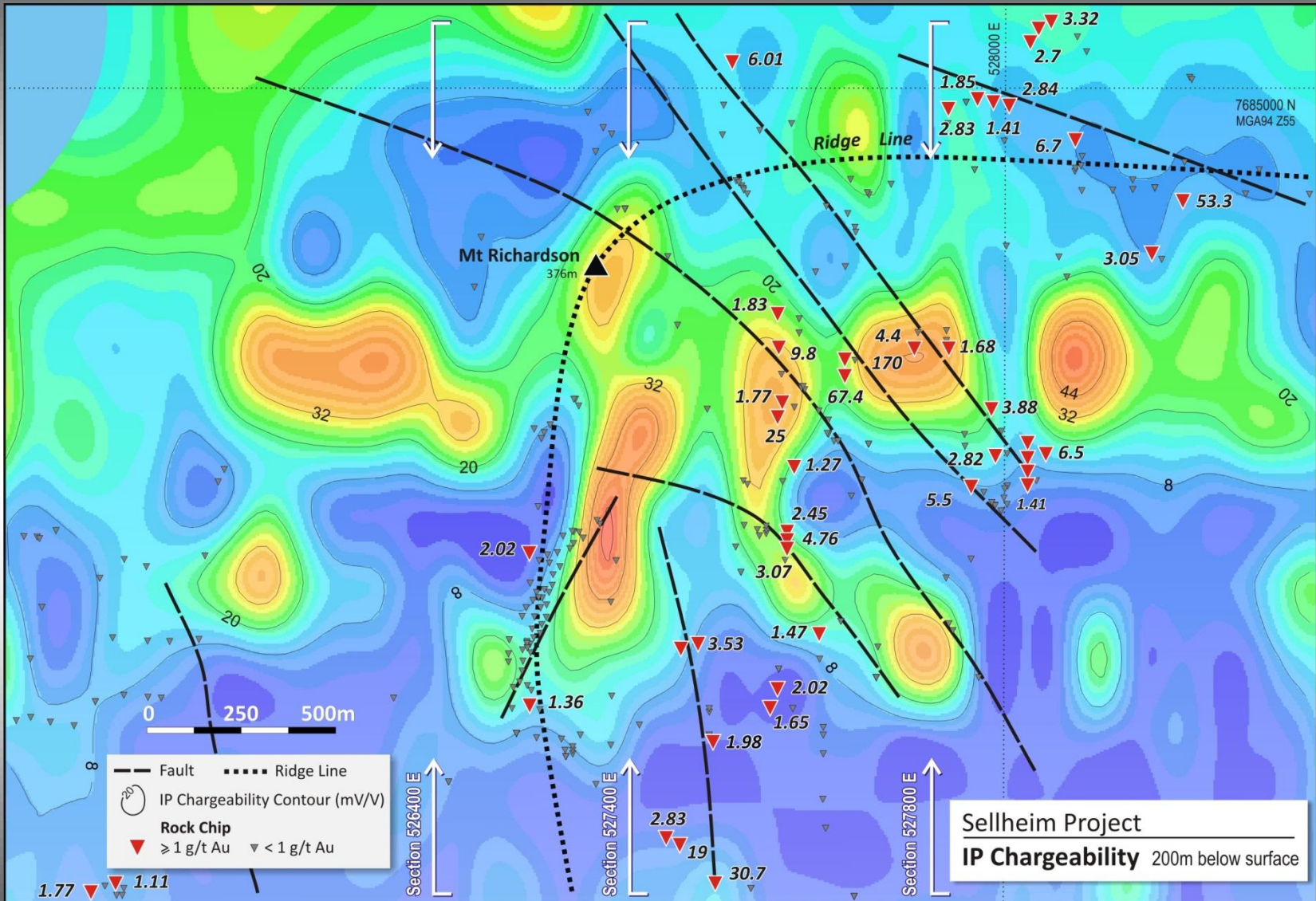
- Site of historic alluvial goldfield (1860s)
- Mining leases and EPMs
- Well endowed province: Charters Towers, Ravenswood, northern part of Drummond Basin with gold inventory of approximately 30 million ounces
- Intrusion-related gold model



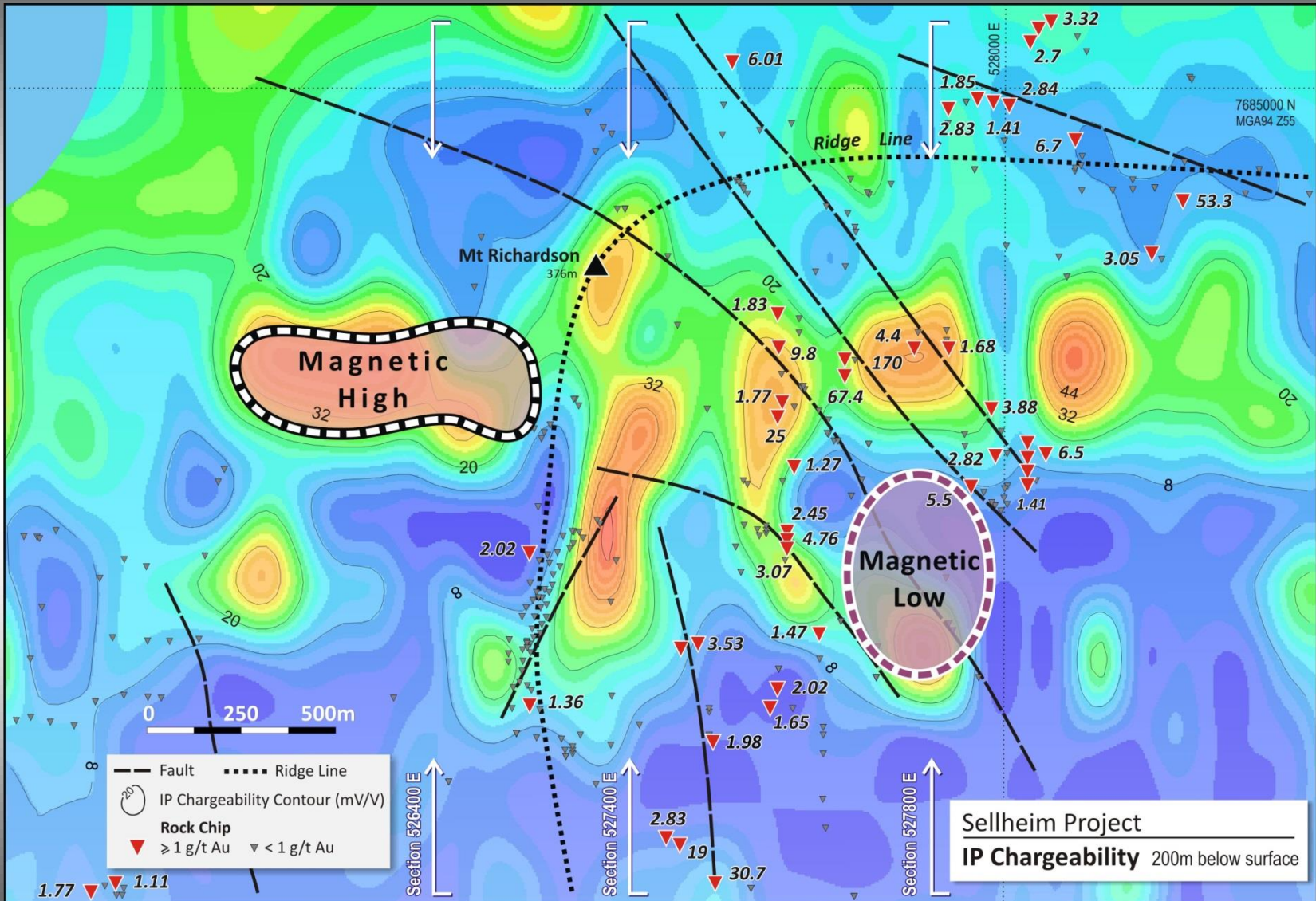
# SELLHEIM GEOLOGY



# SELLHEIM IP Chargeability



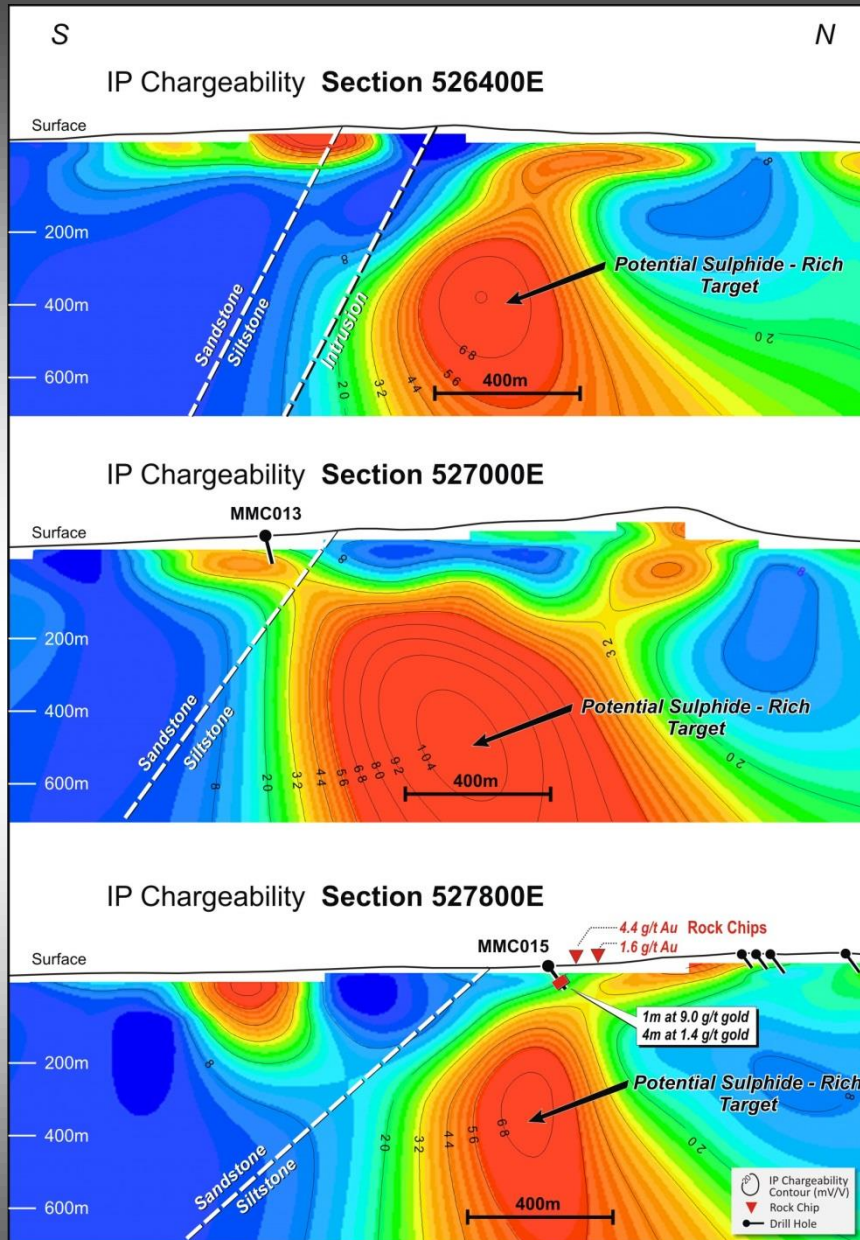
# SELLHEIM IP Chargeability



# SELLHEIM IP

## Chargeability Sections

- Large and strong chargeability anomalies in excess of 100mV/V. Suggests significant sulphide at depth
- Largely hosted in or beneath massive siltstone
- Mineralised intrusions are likely source
- High grade supergene gold in veins above anomalies
- Distinctive signature Au-Bi-Mo-(Cu)



# INTRUSION RELATED GOLD DEPOSITS

## **Alaska**

- Donlin Creek – 23 million ozs gold (10th largest global Au deposit)
- Livengood – 20.6 million ozs gold (31st largest)
- Pogo – 4.8 million ozs gold
- Fort Knox – 4.1 million ozs gold

## **Yukon**

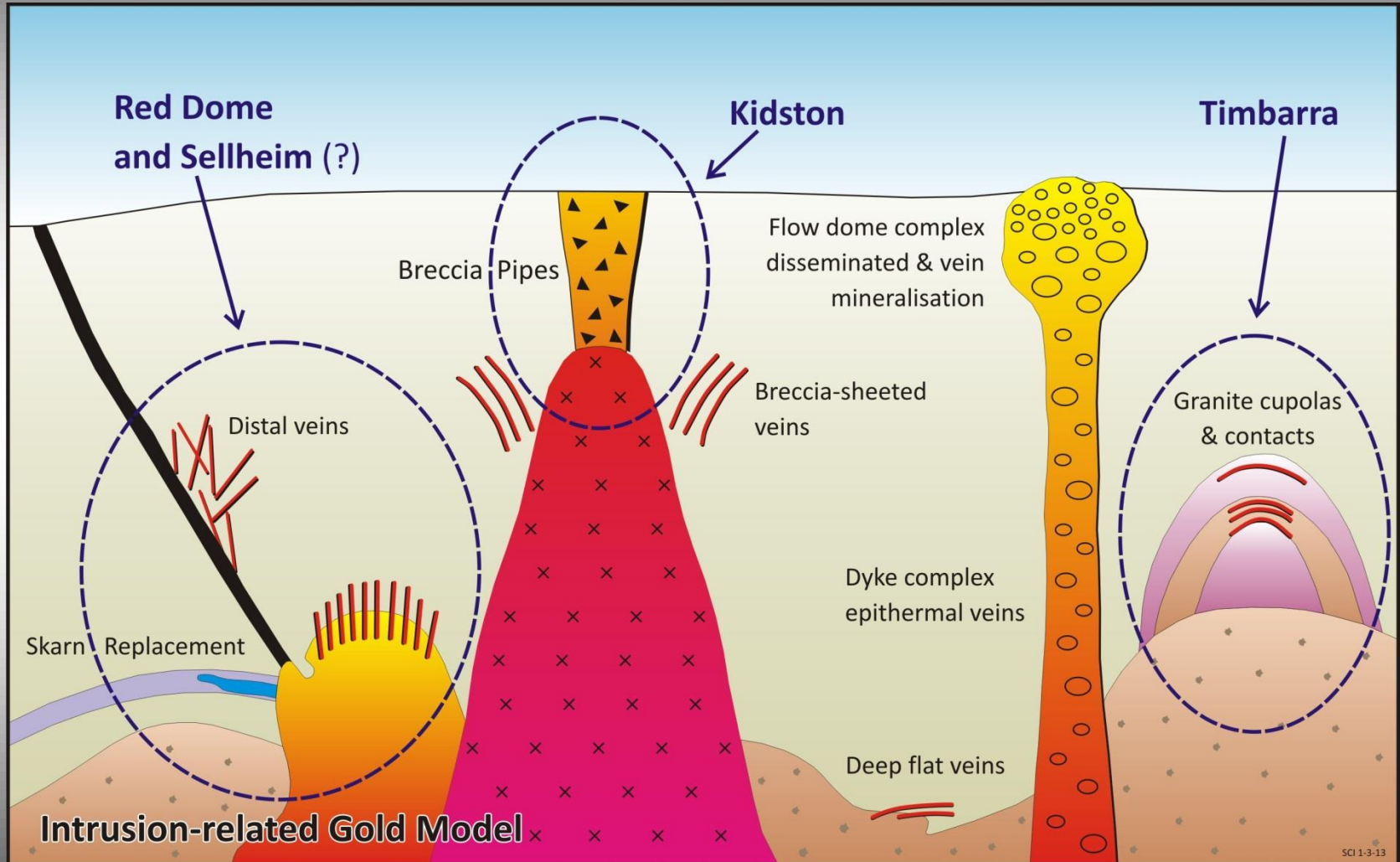
- Dublin Gulch – 3 million ozs gold
- Red Mountain – 2 million ozs gold
- Brewery Creek – 1.2 million ozs gold

## **Queensland**

- Kidston – 5 million ozs gold
- Mt Leyshon – 3.2 million ozs gold
- Red Dome – 1.3 million ozs gold

*Sources: Baker et al. Economic Geology 2006; Thompson et al. Min Deposita 1999; SEG News Oct 12; websites of International Tower Hill Mines; Golden Predator; Victoria Gold; Resolute Mining.*

# INTRUSION-RELATED GOLD MODEL





# SILVER CITY MINERALS

## **BROKEN HILL, NSW**

- LARGE FOCUSED LAND TENURE POSITION, FIRST EVER CONSOLIDATION OF TENURE AT BROKEN HILL
- WORLD CLASS MINING DISTRICT
- POTENTIAL FOR HIGH GRADE GIANT BASEMETAL AND SILVER-RICH OREBODIES

## **SELLHEIM, QUEENSLAND**

- UNIQUE EXPLORATION OPPORTUNITY IN GOLD DISTRICT
- GOLD SOURCE LIKELY TO BE INTRUSIONS AT DEPTH
- IP ANOMALIES PROVIDE CLEAR DRILL TARGETS

# Important Disclaimer

This material contains certain forecasts and forward-looking information, including information about possible or assumed future performance, exploration results, resources or potential growth of Silver City Minerals Limited (SCI), industry growth or other trend projections. Such forecasts and information are not a guarantee of future performance and involve unknown risks and uncertainties, as well as other factors, many of which are beyond the control of Silver City Minerals Limited. Actual results and developments may differ materially from those expressed or implied by these forward-looking statements, depending on a variety of factors. Nothing in this material should be construed as the solicitation of an offer to buy or sell SCI securities.

## Competent Person

Information in this document that relates to Exploration Results, Mineral Resources or Ore Reserves is based on information compiled by Christopher Torrey, who is the Managing Director and full-time employee to of Silver City Minerals Limited, and a Member of the Australian Institute of Geoscientists. Mr Torrey has sufficient experience which is relevant to the style of mineralisation and type of deposit under consideration and to the activity which he is undertaking to qualify as a Competent Person as defined in the 2004 Edition of the “Australasian Code for Reporting of Exploration Results, Mineral Resources and Ore Reserves”. Mr Torrey consents to the inclusion in the report of the matters based on his information in the form and context in which it appears.

# SILVER CITY MINERALS LIMITED

ABN 68 130 933 309



**ASX Code: SCI**

Level 1, 80 Chandos Street  
St Leonards  
NSW 2065  
Australia  
+61 2 94371737

[www.silvercityminerals.com.au](http://www.silvercityminerals.com.au)