



28 May 2013

Market Announcements Platform  
ASX Limited, Exchange Centre  
20 Bridge Street  
Sydney NSW 2000



ASX Code: SHE

## Trench Program Confirms Historical Uranium and Vanadium Results

Stonehenge Metals Limited (ASX: SHE) (**Stonehenge** or the **Company**), a uranium and vanadium exploration and development company with projects in South Korea, announces the results of the recent trenching programme at the Company's Daejeon Project.

### Highlights:

- Trench sampling in the Daejeon Project Area confirms uranium and vanadium mineralisation
- Four trenches totalling 245m in length have been sampled
- Assays have returned Uranium grades up to 1,003ppm  $U_2O_5$  and Vanadium grades up to 13,924ppm  $V_2O_5$

### Location

The Company's Daejeon Project area is located within Daejeon Tenements 7, 17, 18, 27, 28, 38, 47, 48, 57, 59 and Okcheon Tenement 136, 147.

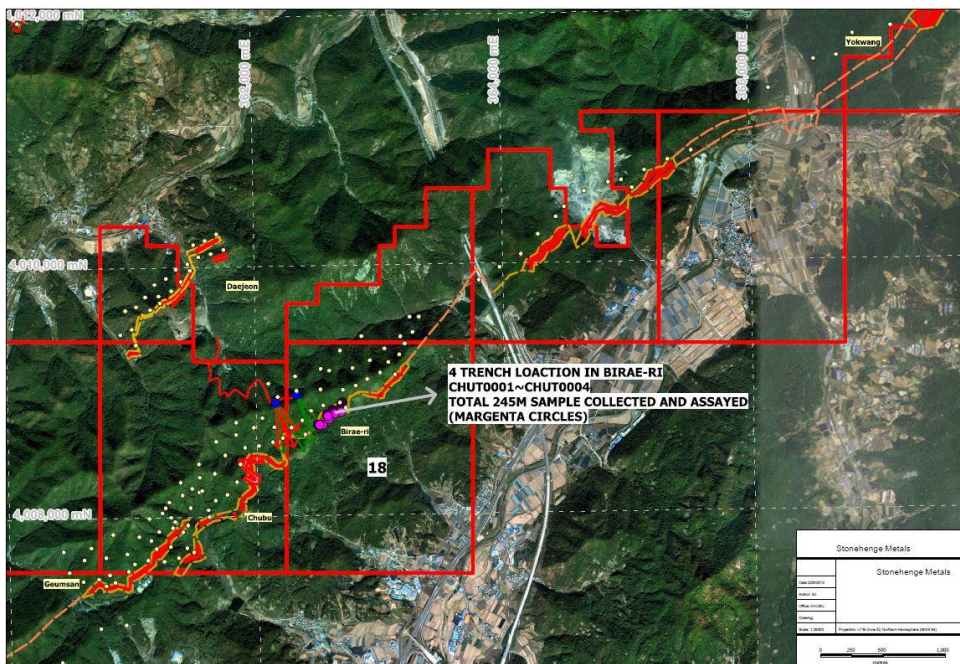


Figure 1: Stonehenge Metals Daejeon Project Area. Showing location of trench sampling and proposed drilling in Tenement 18

The current work carried out by Stonehenge is located within Tenement 18 in Figure 1 above.

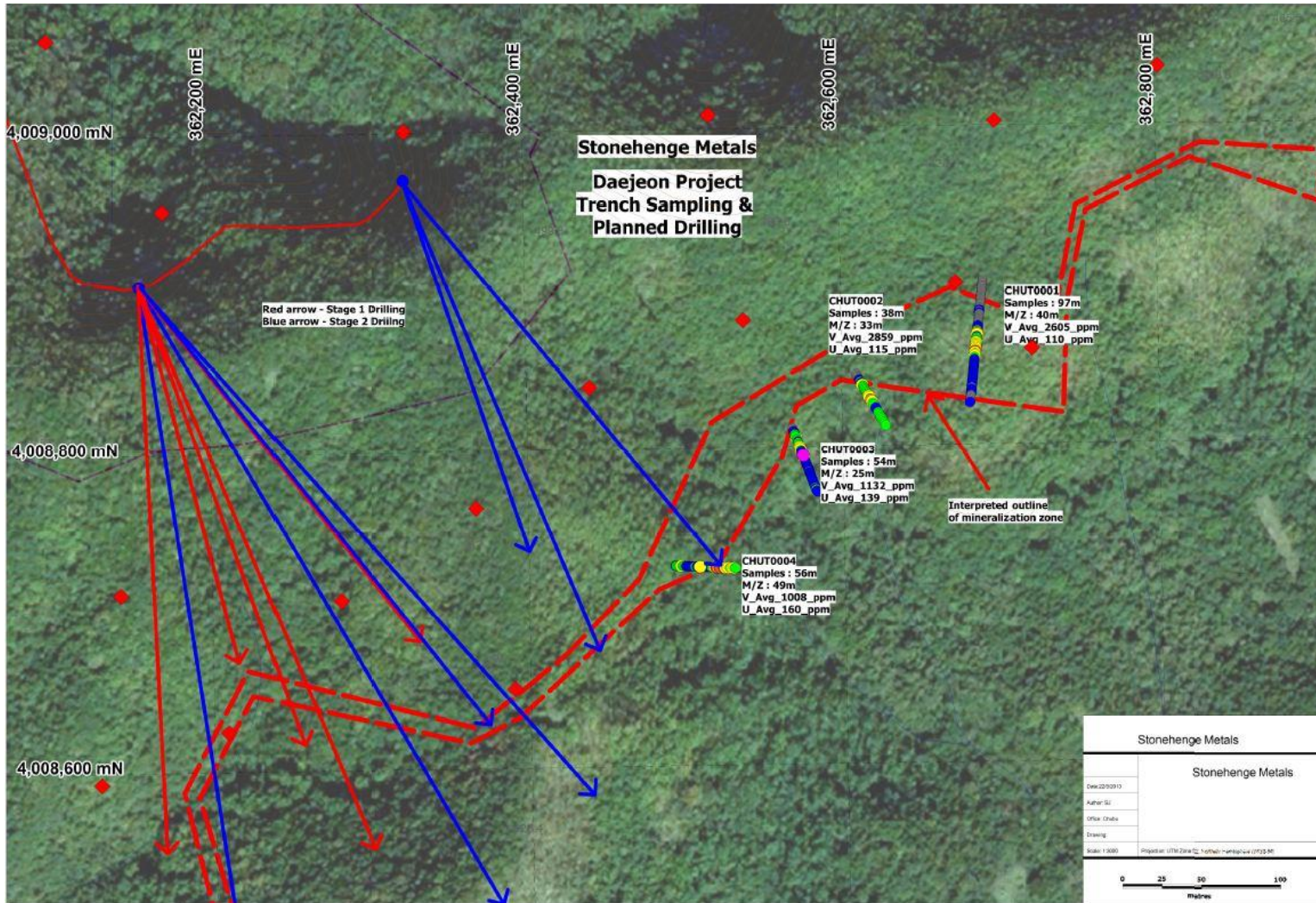


Figure 2: Tenement 18 work area showing the recent trench locations and drilling locations. The average grades. (0 – 20ppm is grey, 20 – 80ppm is blue, 80 – 150ppm is green, 150 – 300ppm is yellow, 300 – 400ppm is orange, 400 – 600ppm is red and 600 – 1,000ppm is magenta)

### Trenching

Four trenches totalling 245 metres in length were dug in the Birae\_Ri area. **Table 1** shows the starting coordinates and azimuth of each trench.

Trench	East	North	RL	Azimuth	Length (m)
CHUT0001	362690	4008902	433	186	97
CHUT0002	362608	4008845	376	140	38
CHUT0003	362568	4008811	387	151	54
CHUT0004	362492	4008726	380	98	56

Table 1: Trench Locations

Samples were taken at 1 metre intervals over the length of the trench. Stonehenge believes there is the potential for the black slates of the Ogcheon Belt in South Korea to contain economic concentration of both Uranium and Vanadium. Geological mapping identified the Birae\_Ri area as a location for mineralised Black Shales.

## Results

Results demonstrate the continuation of the mineralisation identified in the KIER drilling from 1983 to 1985. The KIER drilling identified mineralisation between 100 to 400m below surface. These results demonstrate the continuation of the mineralisation to the surface.

The average results documented in **Table 2** indicate the importance of this area. Full assay results are presented in Appendix 1 to this release.

Trench_ID	From	To	Interval (m)	Avg_V <sub>2</sub> O <sub>5</sub> (ppm)	Max_V <sub>2</sub> O <sub>5</sub> (ppm)
CHUT0001	23	26	3	4022	7177
CHUT0001	36	65	29	5714	13925
CHUT0001	70	76	6	2303	2749
CHUT0002	5	38	33	5104	13568
CHUT0003	3	7	4	5266	7998
CHUT0003	18	28	10	2389	5570
CHUT0004	8	11	3	2933	3285
CHUT0004	26	28	2	3936	4463
CHUT0004	31	34	3	2089	2285
CHUT0004	37	53	16	2646	4802

Trench_ID	From	To	Interval (m)	Avg_U <sub>3</sub> O <sub>8</sub> (ppm)	Max_U <sub>3</sub> O <sub>8</sub> (ppm)
CHUT0001	40	63	23	206	486
CHUT0002	7	26	19	171	390
CHUT0002	32	35	3	134	144
CHUT0003	6	20	14	151	223
CHUT0004	2	9	7	163	236
CHUT0004	19	21	2	130	131
CHUT0004	23	29	6	172	231
CHUT0004	35	56	21	305	693

**Table 2: Significant V<sub>2</sub>O<sub>5</sub> and U<sub>3</sub>O<sub>8</sub> intercepts from trenches**

## Future Work

With the success of this sampling program, further geological mapping and trenching will follow later in the year to identify the extensions of this mineralised zone.

Managing Director Richard Henning commented, “The grades across the trenches are variable, probably associated with a weathering process, the aim of the sampling was to confirm the existence of uranium and vanadium at surface, rather than to seek high grade outcrops. The fact that we can now extend our block model to surface will have a material impact on our next resource upgrade”.

For further information visit [www.stonehengemetals.com.au](http://www.stonehengemetals.com.au) or contact:-

### Stonehenge Metals Limited

Richard Henning - Managing Director

T: + 61 8 9481 2276

E: [rhenning@stonehengemetals.com.au](mailto:rhenning@stonehengemetals.com.au)

### Media enquiries

David Tasker - Professional Public Relations

T: +61 8 9388 0944

M: +61 (0) 433 112 936

## About Stonehenge Metals

Stonehenge Metals Limited (ASX Code: SHE) is developing a multi-mineral project in South Korea. Stonehenge owns 100% of the rights to three projects in South Korea including the Company's flagship Daejon Project which contains the largest uranium resource within South Korea at **65.0Mlbs** (inferred resource) grading **320ppm eU<sub>3</sub>O<sub>8</sub>** at a cut-off of 200ppm eU<sub>3</sub>O<sub>8</sub> (in accordance with JORC guidelines). Presently, the company is drilling to establish a maiden vanadium resource.

### South Korean Project Locations



### Competent Persons Statement

The information contained in this ASX release relating to exploration results, exploration targets and Mineral Resources has been compiled by Mr. Michael Andrew of Optiro Ltd. Mr. Andrew is a Member of The Australian Institute of Mining and Metallurgy. Mr. Andrew has sufficient experience which is relevant to the style of mineralisation and type of deposit under consideration and to the activity which they are undertaking to qualify as Competent Persons as defined in the 2004 Edition of the "Australasian Code for Reporting of Exploration Results, Mineral Resources and Ore Reserves". Mr Andrew consents to the inclusion in the report of the matters based on his information in the form and context in which it appears.

Appendix 1: Full assay results<sup>1</sup>

Trench_ID	SAMPLE_ID	Easting	Northing	FROM	TO	SAMPLE_TYPE	SAMPLE_PURP	CPS	Uppm	Vppm	Comments
CHUT0001	185001	362690	4008903	0	1	OR_TRENCH	ORIGINAL	304	2.98	169	Tenement_Dae18
CHUT0001	185002	362690	4008902	1	2	OR_TRENCH	ORIGINAL	290	2.81	165	Tenement_Dae18
CHUT0001	185003	362690	4008902	2	3	OR_TRENCH	ORIGINAL	306	2.82	170	Tenement_Dae18
CHUT0001	185004	362690	4008901	3	4	OR_TRENCH	ORIGINAL	316	2.84	174	Tenement_Dae18
CHUT0001	185005	362690	4008900	4	5	OR_TRENCH	ORIGINAL	287	2.8	163	Tenement_Dae18
CHUT0001	185006	362690	4008899	5	6	OR_TRENCH	ORIGINAL	293	2.81	165	Tenement_Dae18
CHUT0001	185007	362690	4008899	6	7	OR_TRENCH	ORIGINAL	332	2.83	164	Tenement_Dae18
CHUT0001	185008	362689	4008898	7	8	OR_TRENCH	ORIGINAL	341	2.69	158	Tenement_Dae18
CHUT0001	185009	362689	4008897	8	9	OR_TRENCH	ORIGINAL	316	2.92	149	Tenement_Dae18
CHUT0001	185010					STANDARD (CRM1)	QAQC	293	136	3020	Tenement_Dae18
CHUT0001	185011	362689	4008896	9	10	OR_TRENCH	ORIGINAL	280	2.98	148	Tenement_Dae18
CHUT0001	185012	362689	4008895	10	11	OR_TRENCH	ORIGINAL	283	2.78	141	Tenement_Dae18
CHUT0001	185013	362689	4008895	11	12	OR_TRENCH	ORIGINAL	305	3.5	182	Tenement_Dae18
CHUT0001	185014	362689	4008894	12	13	OR_TRENCH	ORIGINAL	267	2.72	159	Tenement_Dae18
CHUT0001	185015	362689	4008893	13	14	OR_TRENCH	ORIGINAL	272	3.01	158	Tenement_Dae18
CHUT0001	185016	362689	4008892	14	15	OR_TRENCH	ORIGINAL	299	2.83	154	Tenement_Dae18
CHUT0001	185017	362689	4008892	15	16	OR_TRENCH	ORIGINAL	281	2.81	159	Tenement_Dae18
CHUT0001	185018	362689	4008891	16	17	OR_TRENCH	ORIGINAL	318	2.85	165	Tenement_Dae18
CHUT0001	185019	362688	4008890	17	18	OR_TRENCH	ORIGINAL	281	2.73	170	Tenement_Dae18
CHUT0001	185020	362688	4008889	17	18	DU_TRENCH	FIELD_DUP	281	2.88	173	Tenement_Dae18
CHUT0001	185021	362688	4008888	18	19	OR_TRENCH	ORIGINAL	249	2.92	170	Tenement_Dae18
CHUT0001	185022	362688	4008888	19	20	OR_TRENCH	ORIGINAL	229	2.5	126	Tenement_Dae18
CHUT0001	185023	362688	4008887	20	21	OR_TRENCH	ORIGINAL	240	2.59	152	Tenement_Dae18
CHUT0001	185024	362688	4008886	21	22	OR_TRENCH	ORIGINAL	230	3.42	182	Tenement_Dae18
CHUT0001	185025	362688	4008885	22	23	OR_TRENCH	ORIGINAL	217	5.77	401	Tenement_Dae18
CHUT0001	185026	362688	4008885	23	24	OR_TRENCH	ORIGINAL	233	12.95	4020	Tenement_Dae18
CHUT0001	185027	362688	4008884	24	25	OR_TRENCH	ORIGINAL	254	34.4	1320	Tenement_Dae18
CHUT0001	185028	362688	4008883	25	26	OR_TRENCH	ORIGINAL	246	14.1	1420	Tenement_Dae18
CHUT0001	185029	362688	4008883	26	27	OR_TRENCH	ORIGINAL	264	26.1	576	Tenement_Dae18
CHUT0001	185030					STANDARD (CRM2)	QAQC	257	326	8040	Tenement_Dae18
CHUT0001	185031	362687	4008882	27	28	OR_TRENCH	ORIGINAL	253	14.25	290	Tenement_Dae18
CHUT0001	185032	362687	4008881	28	29	OR_TRENCH	ORIGINAL	234	9.17	194	Tenement_Dae18
CHUT0001	185033	362687	4008880	29	30	OR_TRENCH	ORIGINAL	243	14.4	183	Tenement_Dae18
CHUT0001	185034	362687	4008879	30	31	OR_TRENCH	ORIGINAL	2374	5.52	174	Tenement_Dae18
CHUT0001	185035	362687	4008879	31	32	OR_TRENCH	ORIGINAL	235	10.15	227	Tenement_Dae18
CHUT0001	185036	362687	4008878	32	33	OR_TRENCH	ORIGINAL	216	5.91	212	Tenement_Dae18
CHUT0001	185037	362687	4008877	33	34	OR_TRENCH	ORIGINAL	232	3.79	204	Tenement_Dae18
CHUT0001	185038	362687	4008877	34	35	OR_TRENCH	ORIGINAL	221	3.75	193	Tenement_Dae18
CHUT0001	185039	362687	4008876	35	36	OR_TRENCH	ORIGINAL	220	3.2	269	Tenement_Dae18
CHUT0001	185040	362687	4008875	35	36	DU_TRENCH	FIELD_DUP	236	2.84	314	Tenement_Dae18
CHUT0001	185041	362687	4008874	36	37	OR_TRENCH	ORIGINAL	268	54.8	4620	Tenement_Dae18
CHUT0001	185042	362687	4008874	37	38	OR_TRENCH	ORIGINAL	240	46.4	1450	Tenement_Dae18
CHUT0001	185043	362686	4008873	38	39	OR_TRENCH	ORIGINAL	245	46.2	3430	Tenement_Dae18
CHUT0001	185044	362686	4008872	39	40	OR_TRENCH	ORIGINAL	274	72.8	5730	Tenement_Dae18
CHUT0001	185045	362686	4008871	40	41	OR_TRENCH	ORIGINAL	288	138	3110	Tenement_Dae18
CHUT0001	185046	362686	4008871	41	42	OR_TRENCH	ORIGINAL	274	125	1440	Tenement_Dae18
CHUT0001	185047	362686	4008870	42	43	OR_TRENCH	ORIGINAL	301	371	1850	Tenement_Dae18
CHUT0001	185048	362686	4008869	43	44	OR_TRENCH	ORIGINAL	320	155.5	2730	Tenement_Dae18
CHUT0001	185049	362686	4008868	44	45	OR_TRENCH	ORIGINAL	258	128.5	2190	Tenement_Dae18

<sup>1</sup> Note: For consistency U and V results have been converted to U<sub>3</sub>O<sub>8</sub> and V<sub>2</sub>O<sub>5</sub> by multiplying U and V grades by a factor of 1.1792 and 1.7852 respectively.

Trench_ID	SAMPLE_ID	Easting	Northing	FROM	TO	SAMPLE_TYPE	SAMPLE_PURP	CPS	Uppm	Vppm	Comments
CHUT0001	185050					STANDARD (CRM3)	QAQC	242	676	1950	Tenement_Dae18
CHUT0001	185051	362686	4008868	45	46	OR_TRENCH	ORIGINAL	232	71.2	3080	Tenement_Dae18
CHUT0001	185052	362686	4008867	46	47	OR_TRENCH	ORIGINAL	277	149.5	3170	Tenement_Dae18
CHUT0001	185053	362686	4008866	47	48	OR_TRENCH	ORIGINAL	262	112	5510	Tenement_Dae18
CHUT0001	185054	362686	4008865	48	49	OR_TRENCH	ORIGINAL	272	122	4060	Tenement_Dae18
CHUT0001	185055	362686	4008865	49	50	OR_TRENCH	ORIGINAL	276	105	7800	Tenement_Dae18
CHUT0001	185056	362685	4008864	50	51	OR_TRENCH	ORIGINAL	336	279	4690	Tenement_Dae18
CHUT0001	185057	362685	4008863	51	52	OR_TRENCH	ORIGINAL	292	170.5	1730	Tenement_Dae18
CHUT0001	185058	362685	4008862	52	53	OR_TRENCH	ORIGINAL	311	198.5	2400	Tenement_Dae18
CHUT0001	185059	362685	4008862	53	54	OR_TRENCH	ORIGINAL	308	176.5	6510	Tenement_Dae18
CHUT0001	185060	362685	4008861	53	54	DU_TRENCH	FIELD_DUP	326	219	6500	Tenement_Dae18
CHUT0001	185061	362685	4008860	54	55	OR_TRENCH	ORIGINAL	298	162	5210	Tenement_Dae18
CHUT0001	185062	362685	4008860	55	56	OR_TRENCH	ORIGINAL	284	132.5	5750	Tenement_Dae18
CHUT0001	185063	362685	4008859	56	57	OR_TRENCH	ORIGINAL	286	186	3070	Tenement_Dae18
CHUT0001	185064	362685	4008858	57	58	OR_TRENCH	ORIGINAL	359	412	2960	Tenement_Dae18
CHUT0001	185065	362685	4008857	58	59	OR_TRENCH	ORIGINAL	308	180.5	2330	Tenement_Dae18
CHUT0001	185066	362684	4008857	59	60	OR_TRENCH	ORIGINAL	27	138	2270	Tenement_Dae18
CHUT0001	185067	362684	4008856	60	61	OR_TRENCH	ORIGINAL	291	174.5	1330	Tenement_Dae18
CHUT0001	185068	362684	4008855	61	62	OR_TRENCH	ORIGINAL	309	192.5	936	Tenement_Dae18
CHUT0001	185069	362684	4008855	62	63	OR_TRENCH	ORIGINAL	280	146.5	1460	Tenement_Dae18
CHUT0001	185070					STANDARD (CRM1)	QAQC	273	146	3560	Tenement_Dae18
CHUT0001	185071	362684	4008854	63	64	OR_TRENCH	ORIGINAL	268	55.1	806	Tenement_Dae18
CHUT0001	185072	362684	4008853	64	65	OR_TRENCH	ORIGINAL	247	41.7	1220	Tenement_Dae18
CHUT0001	185073	362684	4008853	65	66	OR_TRENCH	ORIGINAL	249	52.6	769	Tenement_Dae18
CHUT0001	185074	362684	4008852	66	67	OR_TRENCH	ORIGINAL	254	50.1	691	Tenement_Dae18
CHUT0001	185075	362684	4008851	67	68	OR_TRENCH	ORIGINAL	265	29.5	622	Tenement_Dae18
CHUT0001	185076	362684	4008851	68	69	OR_TRENCH	ORIGINAL	278	40	657	Tenement_Dae18
CHUT0001	185077	362684	4008850	69	70	OR_TRENCH	ORIGINAL	275	49.6	883	Tenement_Dae18
CHUT0001	185078	362684	4008849	70	71	OR_TRENCH	ORIGINAL	272	49.8	1540	Tenement_Dae18
CHUT0001	185079	362684	4008849	71	72	OR_TRENCH	ORIGINAL	274	37.3	1380	Tenement_Dae18
CHUT0001	185080	362683	4008848	71	72	DU_TRENCH	FIELD_DUP	280	42.5	1280	Tenement_Dae18
CHUT0001	185081	362683	4008847	72	73	OR_TRENCH	ORIGINAL	271	46.4	1230	Tenement_Dae18
CHUT0001	185082	362683	4008846	73	74	OR_TRENCH	ORIGINAL	278	28.1	1160	Tenement_Dae18
CHUT0001	185083	362683	4008846	74	75	OR_TRENCH	ORIGINAL	281	27.4	1190	Tenement_Dae18
CHUT0001	185084	362683	4008845	75	76	OR_TRENCH	ORIGINAL	284	22.1	1240	Tenement_Dae18
CHUT0001	185085	362683	4008844	76	77	OR_TRENCH	ORIGINAL	261	20.1	876	Tenement_Dae18
CHUT0001	185086	362683	4008843	77	78	OR_TRENCH	ORIGINAL	258	26.8	887	Tenement_Dae18
CHUT0001	185087	362683	4008842	78	79	OR_TRENCH	ORIGINAL	273	26.1	799	Tenement_Dae18
CHUT0001	185088	362683	4008842	79	80	OR_TRENCH	ORIGINAL	300	25.4	783	Tenement_Dae18
CHUT0001	185089	362683	4008841	80	81	OR_TRENCH	ORIGINAL	300	22.1	727	Tenement_Dae18
CHUT0001	185090					STANDARD (CRM2)	QAQC	298	359	8610	Tenement_Dae18
CHUT0001	185091	362683	4008840	81	82	OR_TRENCH	ORIGINAL	270	26.7	770	Tenement_Dae18
CHUT0001	185092	362682	4008840	82	83	OR_TRENCH	ORIGINAL	265	25.8	755	Tenement_Dae18
CHUT0001	185093	362682	4008839	83	84	OR_TRENCH	ORIGINAL	283	25.7	709	Tenement_Dae18
CHUT0001	185094	362682	4008838	84	85	OR_TRENCH	ORIGINAL	297	25.9	742	Tenement_Dae18
CHUT0001	185095	362682	4008837	85	86	OR_TRENCH	ORIGINAL	278	22.6	697	Tenement_Dae18
CHUT0001	185096	362682	4008836	86	87	OR_TRENCH	ORIGINAL	254	19.6	703	Tenement_Dae18
CHUT0001	185097	362682	4008835	87	88	OR_TRENCH	ORIGINAL	270	20.1	688	Tenement_Dae18
CHUT0001	185098	362682	4008834	88	89	OR_TRENCH	ORIGINAL	250	20.7	720	Tenement_Dae18

Trench_ID	SAMPLE_ID	Easting	Northing	FROM	TO	SAMPLE_TYPE	SAMPLE_PURP	CPS	Uppm	Vppm	Comments
CHUT0001	185100	362682	4008832	89	90	DU_TRENCH	FIELD_DUP	254	21.6	750	Tenement_Dae18
CHUT0001	185101	362682	4008831	90	91	OR_TRENCH	ORIGINAL	269	19.05	707	Tenement_Dae18
CHUT0001	185102	362681	4008830	91	92	OR_TRENCH	ORIGINAL	249	17.75	727	Tenement_Dae18
CHUT0001	185103	362681	4008829	92	93	OR_TRENCH	ORIGINAL	242	19.6	688	Tenement_Dae18
CHUT0001	185104	362681	4008828	93	94	OR_TRENCH	ORIGINAL	259	18.3	694	Tenement_Dae18
CHUT0001	185105	362681	4008827	94	95	OR_TRENCH	ORIGINAL	270	15.45	703	Tenement_Dae18
CHUT0001	185106	362681	4008826	95	96	OR_TRENCH	ORIGINAL	250	20.3	861	Tenement_Dae18
CHUT0001	185107	362681	4008826	96	97	OR_TRENCH	ORIGINAL	253	19.85	858	Tenement_Dae18
CHUT0002	185108	362609	4008845	0	1	OR_TRENCH	ORIGINAL	230	5.49	414	Tenement_Dae18
CHUT0002	185109	362609	4008844	1	2	OR_TRENCH	ORIGINAL	240	17.15	271	Tenement_Dae18
CHUT0002	185110	362610	4008844	2	3	OR_TRENCH	ORIGINAL	264	15.4	249	Tenement_Dae18
CHUT0002	185111	362610	4008843	3	4	OR_TRENCH	ORIGINAL	269	14.8	576	Tenement_Dae18
CHUT0002	185112	362611	4008842	4	5	OR_TRENCH	ORIGINAL	255	5.6	385	Tenement_Dae18
CHUT0002	185113	362611	4008842	5	6	OR_TRENCH	ORIGINAL	270	26.5	1500	Tenement_Dae18
CHUT0002	185114	362611	4008841	6	7	OR_TRENCH	ORIGINAL	278	36.8	1670	Tenement_Dae18
CHUT0002	185115	362612	4008840	7	8	OR_TRENCH	ORIGINAL	319	105.5	7600	Tenement_Dae18
CHUT0002	185116	362612	4008840	8	9	OR_TRENCH	ORIGINAL	299	70.8	4250	Tenement_Dae18
CHUT0002	185117					STANDARD (CRM3)	QAQC	276	691	1930	Tenement_Dae18
CHUT0002	185118	362612	4008839	9	10	OR_TRENCH	ORIGINAL	314	142	373	Tenement_Dae18
CHUT0002	185119	362613	4008838	10	11	OR_TRENCH	ORIGINAL	342	188	960	Tenement_Dae18
CHUT0002	185120	362613	4008838	11	12	OR_TRENCH	ORIGINAL	315	148	2140	Tenement_Dae18
CHUT0002	185121	362614	4008837	12	13	OR_TRENCH	ORIGINAL	304	101	1400	Tenement_Dae18
CHUT0002	185122	362614	4008836	13	14	OR_TRENCH	ORIGINAL	311	129	1530	Tenement_Dae18
CHUT0002	185123	362614	4008836	14	15	OR_TRENCH	ORIGINAL	312	123	2550	Tenement_Dae18
CHUT0002	185124	362615	4008835	15	16	OR_TRENCH	ORIGINAL	316	89	2260	Tenement_Dae18
CHUT0002	185125	362615	4008834	16	17	OR_TRENCH	ORIGINAL	314	97.5	7180	Tenement_Dae18
CHUT0002	185126	362616	4008833	17	18	OR_TRENCH	ORIGINAL	327	128	3200	Tenement_Dae18
CHUT0002	185127	362616	4008833	17	18	DU_TRENCH	FIELD_DUP	310	116.5	3310	Tenement_Dae18
CHUT0002	185128	362616	4008832	18	19	OR_TRENCH	ORIGINAL	333	131	1900	Tenement_Dae18
CHUT0002	185129	362617	4008831	19	20	OR_TRENCH	ORIGINAL	327	194	2440	Tenement_Dae18
CHUT0002	185130	362617	4008830	20	21	OR_TRENCH	ORIGINAL	350	161.5	2280	Tenement_Dae18
CHUT0002	185131	362618	4008829	21	22	OR_TRENCH	ORIGINAL	345	149	1620	Tenement_Dae18
CHUT0002	185132	362618	4008829	22	23	OR_TRENCH	ORIGINAL	366	331	1760	Tenement_Dae18
CHUT0002	185133	362619	4008828	23	24	OR_TRENCH	ORIGINAL	317	238	3500	Tenement_Dae18
CHUT0002	185134	362619	4008827	24	25	OR_TRENCH	ORIGINAL	361	124	1480	Tenement_Dae18
CHUT0002	185135	362620	4008826	25	26	OR_TRENCH	ORIGINAL	296	121.5	1420	Tenement_Dae18
CHUT0002	185136	362620	4008825	26	27	OR_TRENCH	ORIGINAL	291	59.7	1760	Tenement_Dae18
CHUT0002	185137					STANDARD (CRM1)	QAQC	283	139.5	3380	Tenement_Dae18
CHUT0002	185138	362621	4008824	27	28	OR_TRENCH	ORIGINAL	293	50.8	2970	Tenement_Dae18
CHUT0002	185139	362622	4008823	28	29	OR_TRENCH	ORIGINAL	302	53.2	4400	Tenement_Dae18
CHUT0002	185140	362622	4008822	29	30	OR_TRENCH	ORIGINAL	295	49	2350	Tenement_Dae18
CHUT0002	185141	362623	4008821	30	31	OR_TRENCH	ORIGINAL	306	80.4	1850	Tenement_Dae18
CHUT0002	185142	362623	4008820	31	32	OR_TRENCH	ORIGINAL	329	98.2	5590	Tenement_Dae18
CHUT0002	185143	362624	4008819	32	33	OR_TRENCH	ORIGINAL	315	117.5	4560	Tenement_Dae18
CHUT0002	185144	362624	4008818	33	34	OR_TRENCH	ORIGINAL	317	103	6250	Tenement_Dae18
CHUT0002	185145	362625	4008817	34	35	OR_TRENCH	ORIGINAL	330	122.5	4180	Tenement_Dae18
CHUT0002	185146	362625	4008816	35	36	OR_TRENCH	ORIGINAL	315	87.9	2160	Tenement_Dae18
CHUT0002	185147	362626	4008815	35	36	DU_TRENCH	FIELD_DUP	309	88.2	2570	Tenement_Dae18
CHUT0002	185148	362627	4008814	36	37	OR_TRENCH	ORIGINAL	322	82.9	3310	Tenement_Dae18

Trench_ID	SAMPLE_ID	Easting	Northing	FROM	TO	SAMPLE_TYPE	SAMPLE_PURP	CPS	Uppm	Vppm	Comments
CHUT003	185150	362568	4008812	0	1	OR_TRENCH	ORIGINAL	226	3.72	202	Tenement_Dae18
CHUT003	185151	362568	4008811	1	2	OR_TRENCH	ORIGINAL	230	1.44	215	Tenement_Dae18
CHUT003	185152	362569	4008810	2	3	OR_TRENCH	ORIGINAL	225	1.39	224	Tenement_Dae18
CHUT003	185153	362569	4008810	3	4	OR_TRENCH	ORIGINAL	226	20.3	1810	Tenement_Dae18
CHUT003	185154	362569	4008809	4	5	OR_TRENCH	ORIGINAL	250	36.5	3680	Tenement_Dae18
CHUT003	185155	362569	4008808	5	6	OR_TRENCH	ORIGINAL	240	60.3	4480	Tenement_Dae18
CHUT003	185156	362570	4008808	6	7	OR_TRENCH	ORIGINAL	294	142	1830	Tenement_Dae18
CHUT003	185157	362570	4008807	7	8	OR_TRENCH	ORIGINAL	301	122.5	509	Tenement_Dae18
CHUT003	185158	362570	4008806	8	9	OR_TRENCH	ORIGINAL	300	105	380	Tenement_Dae18
CHUT003	185159					STANDARD (CRM2)	QAQC	272	342	8010	Tenement_Dae18
CHUT003	185160	362570	4008806	9	10	OR_TRENCH	ORIGINAL	315	157	439	Tenement_Dae18
CHUT003	185161	362571	4008805	10	11	OR_TRENCH	ORIGINAL	279	110.5	261	Tenement_Dae18
CHUT003	185162	362571	4008804	11	12	OR_TRENCH	ORIGINAL	283	125	297	Tenement_Dae18
CHUT003	185163	362571	4008803	12	13	OR_TRENCH	ORIGINAL	263	63.6	251	Tenement_Dae18
CHUT003	185164	362572	4008803	13	14	OR_TRENCH	ORIGINAL	291	125.5	211	Tenement_Dae18
CHUT003	185165	362572	4008802	14	15	OR_TRENCH	ORIGINAL	298	119.5	180	Tenement_Dae18
CHUT003	185166	362572	4008801	15	16	OR_TRENCH	ORIGINAL	297	125.5	195	Tenement_Dae18
CHUT003	185167	362572	4008800	16	17	OR_TRENCH	ORIGINAL	310	121.5	158	Tenement_Dae18
CHUT003	185168	362573	4008800	17	18	OR_TRENCH	ORIGINAL	312	157	255	Tenement_Dae18
CHUT003	185169	362573	4008799	17	18	DU_TRENCH	FIELD_DUP	304	157.5	475	Tenement_Dae18
CHUT003	185170	362573	4008798	18	19	OR_TRENCH	ORIGINAL	349	189.5	1230	Tenement_Dae18
CHUT003	185171	362573	4008798	19	20	OR_TRENCH	ORIGINAL	293	122.5	537	Tenement_Dae18
CHUT003	185172	362574	4008797	20	21	OR_TRENCH	ORIGINAL	280	77.6	836	Tenement_Dae18
CHUT003	185173	362574	4008796	21	22	OR_TRENCH	ORIGINAL	301	70.9	1330	Tenement_Dae18
CHUT003	185174	362574	4008796	22	23	OR_TRENCH	ORIGINAL	274	53.4	746	Tenement_Dae18
CHUT003	185175	362574	4008795	23	24	OR_TRENCH	ORIGINAL	305	41.1	842	Tenement_Dae18
CHUT003	185176	362575	4008794	24	25	OR_TRENCH	ORIGINAL	569	851	3120	Tenement_Dae18
CHUT003	185177	362575	4008794	25	26	OR_TRENCH	ORIGINAL	340	254	1260	Tenement_Dae18
CHUT003	185178	362575	4008793	26	27	OR_TRENCH	ORIGINAL	314	162.5	2070	Tenement_Dae18
CHUT003	185179					STANDARD (CRM3)	QAQC	242	661	1640	Tenement_Dae18
CHUT003	185180	362576	4008792	27	28	OR_TRENCH	ORIGINAL	278	62.1	1410	Tenement_Dae18
CHUT003	185181	362576	4008791	28	29	OR_TRENCH	ORIGINAL	271	37.4	719	Tenement_Dae18
CHUT003	185182	362576	4008790	29	30	OR_TRENCH	ORIGINAL	260	22.1	518	Tenement_Dae18
CHUT003	185183	362576	4008790	30	31	OR_TRENCH	ORIGINAL	260	30.9	568	Tenement_Dae18
CHUT003	185184	362577	4008789	31	32	OR_TRENCH	ORIGINAL	274	30.5	537	Tenement_Dae18
CHUT003	185185	362577	4008788	32	33	OR_TRENCH	ORIGINAL	259	25.2	500	Tenement_Dae18
CHUT003	185186	362577	4008787	33	34	OR_TRENCH	ORIGINAL	248	21.3	450	Tenement_Dae18
CHUT003	185187	362578	4008787	34	35	OR_TRENCH	ORIGINAL	266	27.3	450	Tenement_Dae18
CHUT003	185188	362578	4008786	35	36	OR_TRENCH	ORIGINAL	260	43.1	328	Tenement_Dae18
CHUT003	185189	362578	4008785	35	36	DU_TRENCH	FIELD_DUP	257	35.6	397	Tenement_Dae18
CHUT003	185190	362578	4008784	36	37	OR_TRENCH	ORIGINAL	259	15.7	430	Tenement_Dae18
CHUT003	185191	362579	4008784	37	38	OR_TRENCH	ORIGINAL	273	26.8	589	Tenement_Dae18
CHUT003	185192	362579	4008783	38	39	OR_TRENCH	ORIGINAL	271	25.6	541	Tenement_Dae18
CHUT003	185193	362579	4008783	39	40	OR_TRENCH	ORIGINAL	268	26.7	561	Tenement_Dae18
CHUT003	185194	362579	4008782	40	41	OR_TRENCH	ORIGINAL	260	26.7	535	Tenement_Dae18
CHUT003	185195	362580	4008781	41	42	OR_TRENCH	ORIGINAL	282	32.1	520	Tenement_Dae18
CHUT003	185196	362580	4008780	42	43	OR_TRENCH	ORIGINAL	263	32.2	560	Tenement_Dae18
CHUT003	185197	362580	4008780	43	44	OR_TRENCH	ORIGINAL	242	32.6	669	Tenement_Dae18
CHUT003	185198	362580	4008779	44	45	OR_TRENCH	ORIGINAL	258	28.6	612	Tenement_Dae18



Trench_ID	SAMPLE_ID	Easting	Northing	FROM	TO	SAMPLE_TYPE	SAMPLE_PURP	CPS	Uppm	Vppm	Comments
CHUT0003	185200	362581	4008778	45	46	OR_TRENCH	ORIGINAL	265	29.7	1040	Tenement_Dae18
CHUT0003	185201	362581	4008777	46	47	OR_TRENCH	ORIGINAL	251	36.7	810	Tenement_Dae18
CHUT0003	185202	362581	4008777	47	48	OR_TRENCH	ORIGINAL	258	30.4	684	Tenement_Dae18
CHUT0003	185203	362582	4008776	48	49	OR_TRENCH	ORIGINAL	263	29.1	613	Tenement_Dae18
CHUT0003	185204	362582	4008775	49	50	OR_TRENCH	ORIGINAL	262	26.1	572	Tenement_Dae18
CHUT0003	185205	362582	4008774	50	51	OR_TRENCH	ORIGINAL	238	14.2	413	Tenement_Dae18
CHUT0003	185206	362582	4008774	51	52	OR_TRENCH	ORIGINAL	261	33.1	687	Tenement_Dae18
CHUT0003	185207	362583	4008773	52	53	OR_TRENCH	ORIGINAL	292	81.1	819	Tenement_Dae18
CHUT0003	185208	362583	4008772	53	54	OR_TRENCH	ORIGINAL	266	30.6	764	Tenement_Dae18
CHUT0003	185209	362583	4008771	53	54	DU_TRENCH	FIELD_DUP	273	24.4	577	Tenement_Dae18
CHUT0004	185210	362492	4008726	0	1	OR_TRENCH	ORIGINAL	273	89.3	619	Tenement_Dae18
CHUT0004	185211	362493	4008726	1	2	OR_TRENCH	ORIGINAL	270	79.4	286	Tenement_Dae18
CHUT0004	185212	362493	4008726	2	3	OR_TRENCH	ORIGINAL	296	140	364	Tenement_Dae18
CHUT0004	185213	362494	4008726	3	4	OR_TRENCH	ORIGINAL	300	90.1	890	Tenement_Dae18
CHUT0004	185214	362495	4008726	4	5	OR_TRENCH	ORIGINAL	310	129	1700	Tenement_Dae18
CHUT0004	185215	362495	4008726	5	6	OR_TRENCH	ORIGINAL	326	144	646	Tenement_Dae18
CHUT0004	185216	362496	4008726	6	7	OR_TRENCH	ORIGINAL	302	141	446	Tenement_Dae18
CHUT0004	185217	362497	4008726	7	8	OR_TRENCH	ORIGINAL	320	200	666	Tenement_Dae18
CHUT0004	185218	362497	4008726	8	9	OR_TRENCH	ORIGINAL	270	122.5	1780	Tenement_Dae18
CHUT0004	185219					STANDARD (CRM2)	QAQC	230	320	7650	Tenement_Dae18
CHUT0004	185220	362498	4008726	9	10	OR_TRENCH	ORIGINAL	280	90.6	1840	Tenement_Dae18
CHUT0004	185221	362499	4008726	10	11	OR_TRENCH	ORIGINAL	270	83.3	1310	Tenement_Dae18
CHUT0004	185222	362499	4008726	11	12	OR_TRENCH	ORIGINAL	250	58.1	414	Tenement_Dae18
CHUT0004	185223	362500	4008726	12	13	OR_TRENCH	ORIGINAL	260	52.9	448	Tenement_Dae18
CHUT0004	185224	362501	4008726	13	14	OR_TRENCH	ORIGINAL	270	58.9	374	Tenement_Dae18
CHUT0004	185225	362501	4008726	14	15	OR_TRENCH	ORIGINAL	260	44	404	Tenement_Dae18
CHUT0004	185226	362502	4008726	15	16	OR_TRENCH	ORIGINAL	250	48	393	Tenement_Dae18
CHUT0004	185227	362503	4008726	16	17	OR_TRENCH	ORIGINAL	230	33.4	269	Tenement_Dae18
CHUT0004	185228	362503	4008726	17	18	OR_TRENCH	ORIGINAL	250	44.8	624	Tenement_Dae18
CHUT0004	185229	362504	4008726	17	18	DU_TRENCH	FIELD_DUP	250	46.1	349	Tenement_Dae18
CHUT0004	185230	362504	4008725	18	19	OR_TRENCH	ORIGINAL	250	68.5	423	Tenement_Dae18
CHUT0004	185231	362505	4008725	19	20	OR_TRENCH	ORIGINAL	260	108.5	351	Tenement_Dae18
CHUT0004	185232	362506	4008725	20	21	OR_TRENCH	ORIGINAL	280	111	315	Tenement_Dae18
CHUT0004	185233	362506	4008725	21	22	OR_TRENCH	ORIGINAL	260	72.9	518	Tenement_Dae18
CHUT0004	185234	362507	4008725	22	23	OR_TRENCH	ORIGINAL	260	26.7	382	Tenement_Dae18
CHUT0004	185235	362508	4008725	23	24	OR_TRENCH	ORIGINAL	260	116.5	504	Tenement_Dae18
CHUT0004	185236	362508	4008725	24	25	OR_TRENCH	ORIGINAL	270	151.5	400	Tenement_Dae18
CHUT0004	185237	362509	4008725	25	26	OR_TRENCH	ORIGINAL	270	196.5	335	Tenement_Dae18
CHUT0004	185238	362510	4008725	26	27	OR_TRENCH	ORIGINAL	270	144	1910	Tenement_Dae18
CHUT0004	185239					STANDARD (CRM3)	QAQC	220	666	1670	Tenement_Dae18
CHUT0004	185240	362510	4008725	27	28	OR_TRENCH	ORIGINAL	280	146.5	2500	Tenement_Dae18
CHUT0004	185241	362511	4008725	28	29	OR_TRENCH	ORIGINAL	260	119	438	Tenement_Dae18
CHUT0004	185242	362512	4008725	29	30	OR_TRENCH	ORIGINAL	240	86.2	588	Tenement_Dae18
CHUT0004	185243	362512	4008725	30	31	OR_TRENCH	ORIGINAL	260	39.4	752	Tenement_Dae18
CHUT0004	185244	362513	4008725	31	32	OR_TRENCH	ORIGINAL	260	51.2	1060	Tenement_Dae18
CHUT0004	185245	362514	4008725	32	33	OR_TRENCH	ORIGINAL	240	64	1280	Tenement_Dae18
CHUT0004	185246	362514	4008725	33	34	OR_TRENCH	ORIGINAL	260	34.6	1170	Tenement_Dae18
CHUT0004	185247	362515	4008725	34	35	OR_TRENCH	ORIGINAL	290	73.1	894	Tenement_Dae18
CHUT0004	185248	362516	4008725	35	36	OR_TRENCH	ORIGINAL	270	104	329	Tenement_Dae18

Trench_ID	SAMPLE_ID	Easting	Northing	FROM	TO	SAMPLE_TYPE	SAMPLE_PURP	CPS	Uppm	Vppm	Comments
CHUT0004	185250	362517	4008725	36	37	OR_TRENCH	ORIGINAL	260	139.5	214	Tenement_Dae18
CHUT0004	185251	362518	4008725	37	38	OR_TRENCH	ORIGINAL	300	182.5	2020	Tenement_Dae18
CHUT0004	185252	362519	4008725	38	39	OR_TRENCH	ORIGINAL	480	588	2690	Tenement_Dae18
CHUT0004	185253	362519	4008725	39	40	OR_TRENCH	ORIGINAL	350	388	1510	Tenement_Dae18
CHUT0004	185254	362520	4008725	40	41	OR_TRENCH	ORIGINAL	350	291	2030	Tenement_Dae18
CHUT0004	185255	362521	4008725	41	42	OR_TRENCH	ORIGINAL	380	549	1820	Tenement_Dae18
CHUT0004	185256	362521	4008725	42	43	OR_TRENCH	ORIGINAL	400	375	1220	Tenement_Dae18
CHUT0004	185257	362522	4008725	43	44	OR_TRENCH	ORIGINAL	330	325	1330	Tenement_Dae18
CHUT0004	185258	362523	4008724	44	45	OR_TRENCH	ORIGINAL	330	331	1690	Tenement_Dae18
CHUT0004	185259					STANDARD (CRM1)	QAQC	220	131	2860	Tenement_Dae18
CHUT0004	185260	362523	4008724	45	46	OR_TRENCH	ORIGINAL	350	456	1930	Tenement_Dae18
CHUT0004	185261	362524	4008724	46	47	OR_TRENCH	ORIGINAL	300	247	1060	Tenement_Dae18
CHUT0004	185262	362525	4008724	47	48	OR_TRENCH	ORIGINAL	280	98.3	933	Tenement_Dae18
CHUT0004	185263	362526	4008724	48	49	OR_TRENCH	ORIGINAL	290	242	1270	Tenement_Dae18
CHUT0004	185264	362526	4008724	49	50	OR_TRENCH	ORIGINAL	330	298	1230	Tenement_Dae18
CHUT0004	185265	362527	4008724	50	51	OR_TRENCH	ORIGINAL	280	100	382	Tenement_Dae18
CHUT0004	185266	362528	4008724	51	52	OR_TRENCH	ORIGINAL	250	60.3	1040	Tenement_Dae18
CHUT0004	185267	362528	4008724	52	53	OR_TRENCH	ORIGINAL	300	213	1560	Tenement_Dae18
CHUT0004	185268	362529	4008724	53	54	OR_TRENCH	ORIGINAL	260	225	318	Tenement_Dae18
CHUT0004	185269	362530	4008724	53	54	DU_TRENCH	FIELD_DUP	270	162.5	417	Tenement_Dae18
CHUT0004	185270	362530	4008724	54	55	OR_TRENCH	ORIGINAL	290	126	985	Tenement_Dae18
CHUT0004	185271	362531	4008724	55	56	OR_TRENCH	ORIGINAL	280	110	906	Tenement_Dae18