



ACTIVITIES REPORT FOR THE QUARTERLY PERIOD ENDED 31 DECEMBER 2012

KEY HIGHLIGHTS FOR THE QUARTER

- **Nowthanna Hill Uranium Resource confirmed at 3.06 MT**
- **EM survey coverage is planned to be extended over E51/1529**
- **Palaeo – Channels have been identified from modelling the EM survey**
- **A new, extensive eastern EM target zone has been identified over Gabanintha tenements.**
- **Modelling indicates possible sulphide anomaly – known to be prospective for copper & gold mineralisation about 1 kilometre east of the Gabanintha deposit.**
- **YRR has finished an Induced Polarization (IP) ground geophysical survey to further define drill targets within the new EM zone.**
- **The IP was conducted by Fugro on 35 lines using over 750 survey stations. The lines were oriented NE-SW and there were tie-lines in a NW-SE direction parallel to the regional strike.**

Nowthanna Hill Uranium Resource

Review of historic drilling data confirms JORC- compliant Indicated Mineral Resource of 3.06MT at a grade of 0.44 kg/t U₃O₈ which is contiguous with the Toro Energy Ltd Nowthanna Indicated Mineral Resource (7.31 MT at 0.45 kg/t).

The reviewed data from previous work by Dominion Mining Ltd and Acclaim Uranium NL shows that there is a high grade uranium deposit between 1 metre and 7 metres beneath surface and varying in thickness from 1 to 2 metres over a strike distance of 2 kilometres. The mineralisation is within carnotite (uranium-potassium vanadate) associated with lacustrine clays.

The extent of the shallow uranium deposit as defined by Acclaim Uranium NL (see Figure 1) was modeled by Snowden & Associates in 1998 as follows:

Lease	Category	Tonnes	Grade	Contained Tonnes
M51/771 (YRR)	Indicated Resource	3,059,000	0.437 kg/t U₃O₈	1,337 U₃O₈
E51/776 (Defiance Mining-Acclaim)	Indicated Resource	7,309,451	0.450 kg/t U ₃ O ₈	3,289 U ₃ O ₈



The Department of Mines and Petroleum (DMP) has a resource figure for YRR Nowthanna deposit quoted below:

Lease	Category	Tonnes	Grade	Contained Tonnes
M51/771 (YRR)	Inferred Resource	2.98MT	0.423 kg/t U ₃ O ₈	1,261 U ₃ O ₈

This was derived by subtraction from the latest quoted Toro Energy Ltd figure (derived from Defiance Mining NL) and is similar to the Snowden figure of 1998. However recent work has confirmed that the more accurate resource is that quantified by Acclaim at 3.059MT that was derived from the original block volumes. The Acclaim resource was estimated from 68 Air Core holes (12 to 15m deep) for 1052 metres and grade was tested by assay as well as radiometric logging. A 0.75kg/t lower cutoff was used and a bulk density of 1.5 for resource block estimation.

Refer to WAMEX reports A54794 (Acclaim 1998) and A58248 (Acclaim 1999).

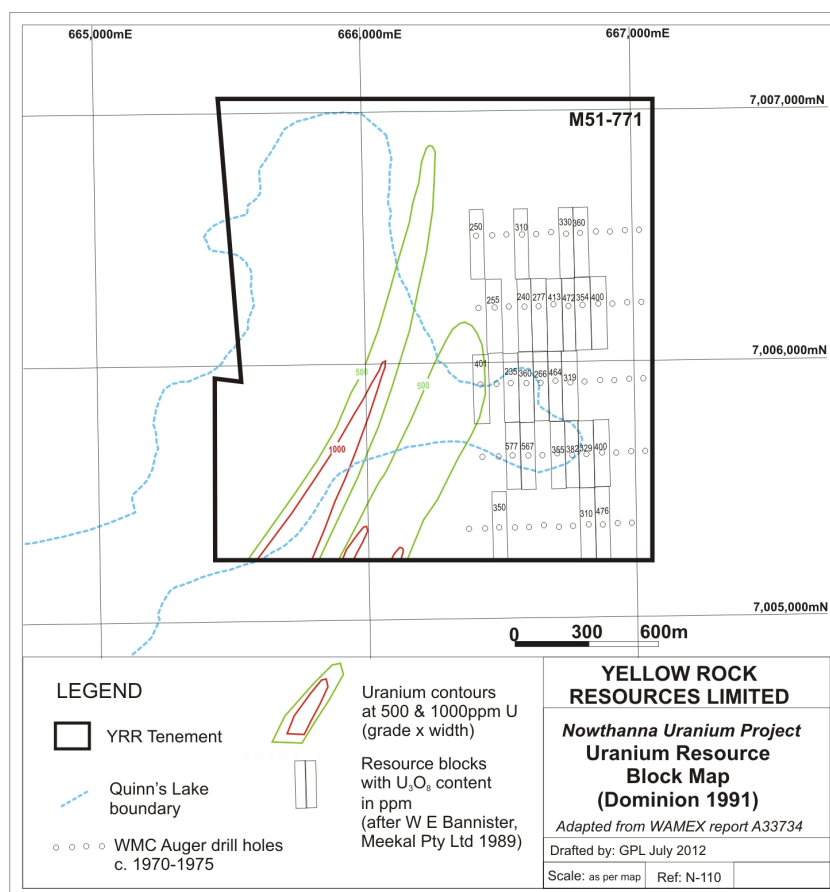


Figure 1 – Original map of resource blocks and uranium contours

There is scope to increase the resource, particularly in the southern and western portions of the tenement.

Application for a Mining Lease has been in progress for some time and it is expected that this will be granted soon.



Yellow Rock Resources Limited ABN 90 116 221 740
Address 420 Newcastle Street | West Perth | WA | 6005
Mailing Address PO Box 332 | Leederville | WA | 6903
web www.yellowrock.com.au
p (08) 9227 6300 f (08) 9227 6400 e info@yrr.com.au

GABANINTHA HELITEM GEOPHYSICAL DATA MODELLING

As a result of the helicopter-borne Time domain Electromagnetic and Magnetic Survey (HELITEM) on the Gabanintha and Nowthanna Hill Tenements YRR has engaged Fugro Airborne Services Pty Ltd (Fugro) geophysicists to model the electro-magnetic responses.

The HELITEM survey covered the entire area of the YRR Gabanintha and Nowthanna tenements and was completed by Fugro over 537 line kilometres with flight paths at 150 Metres apart.

This technique is capable of providing indications of deeper profiles of the known and potential mineralised bodes by modelling the magnetic and electro-magnetic responses.

Data from the modelling of the HELITEM survey interpretation by Fugro geophysicists was successful in showing a much larger and deeper magnetite orebody than that already identified by past drilling programs. (See YRR announcement of 30 May 2012).

In addition to ore deposit modelling from the HELITEM survey, Fugro geophysicists were able to model near-surface features from the large volume of data generated. Conductivity of oxidised bedrock has a different geophysical response to transported or near-surface features such as calcrete, floodplain sands and silts, alluvium, laterite and palaeo-channels.

Figures 2 and 3 show modelled features from the conductivity depth data interpreted to be channels lying above the bedrock and trending NE-SW. This indicates that there is a significant volume of material that probably represents an ancient channel draining towards the southwest across the strike of the Gabanintha orebody and towards newly - acquired tenement E51/1529.

The typical conductivity model profile is shown below on Figure 2 where an interpreted channel is clearly demonstrated in cross section (within red ellipse) and appears to be over 100m deep.

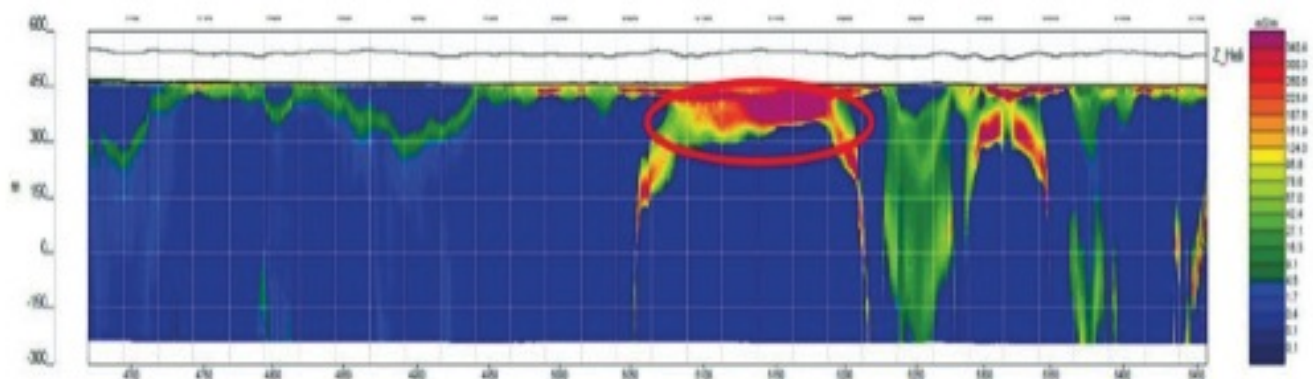


Figure 2 - Conductivity Depth Image (CDI) of a palaeochannel at Gabanintha in cross section.

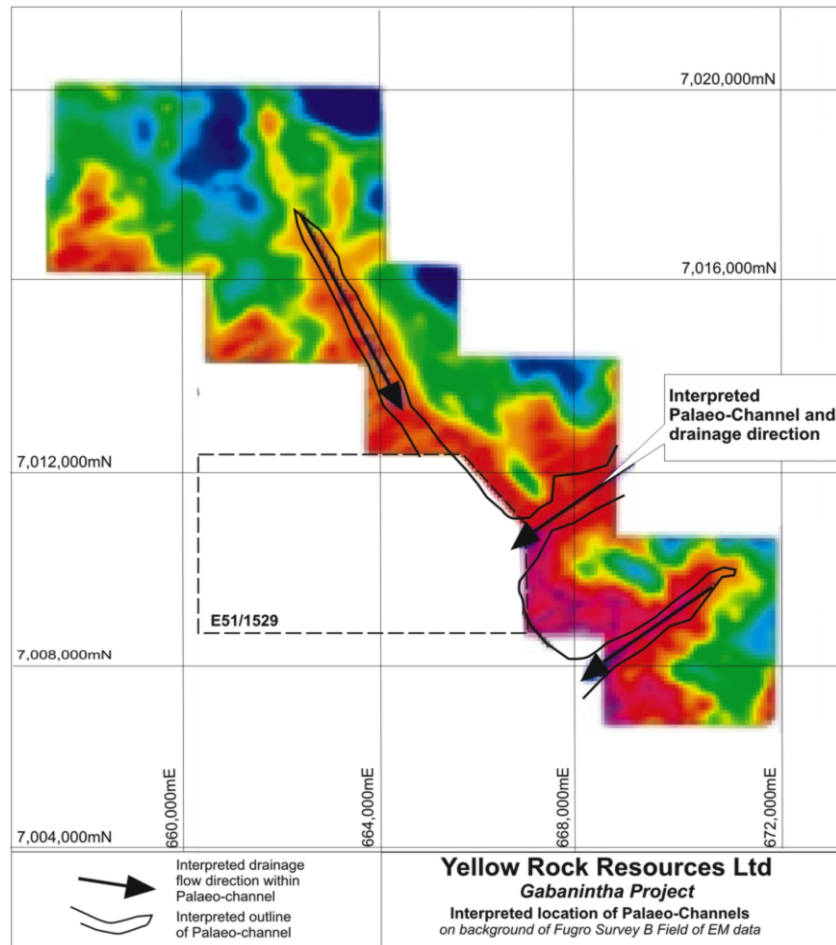


Figure 3 – Demonstrates the orientation and location of the interpreted channels as interpreted from the Fugro Electro-Magnetic (EM) B-Field data.

The EM responses modelled for the Gabanintha channel structures are similar to known uranium-bearing palaeo – channels previously modelled by Fugro where saline water, hygroscopic clays and calcretes are also present.

CONDUCTIVE TARGET FOUND IN FUGRO HELITEM INTERPRETATION ENHANCES PROSPECTIVITY FOR SIGNIFICANT COPPER AND/OR GOLD DISCOVERY (ANNOUNCED 3 SEPTEMBER 2012)

Modelling of the helicopter-borne Time domain Electromagnetic and Magnetic (HELITEM) survey at Gabanintha by Fugro geophysicists has led to the identification of a new EM zone parallel to, and about one kilometre northeast of the Gabanintha deposit.

It is believed that the EM target zone is extensive (along the length of the tenement) and variable in depth and dip, as well as intensity. Some of the modelling shows a northeast dipping zone, which may be spatially related to the ultramafic/basalt contact.

Further modelling will be completed on this new feature and surface IP surveys are planned so that specific areas can be investigated by drilling. See Figure 4.

Previous modelling of the HELITEM survey interpretation by Fugro geophysicists was successful in showing a much larger and deeper magnetite orebody than that already identified by past drilling programs. (See YRR announcement on 30 May 2012).

In addition to ore deposit modelling from the HELITEM survey, palaeo-channels were identified. (See YRR announcement on 19 July 2012).

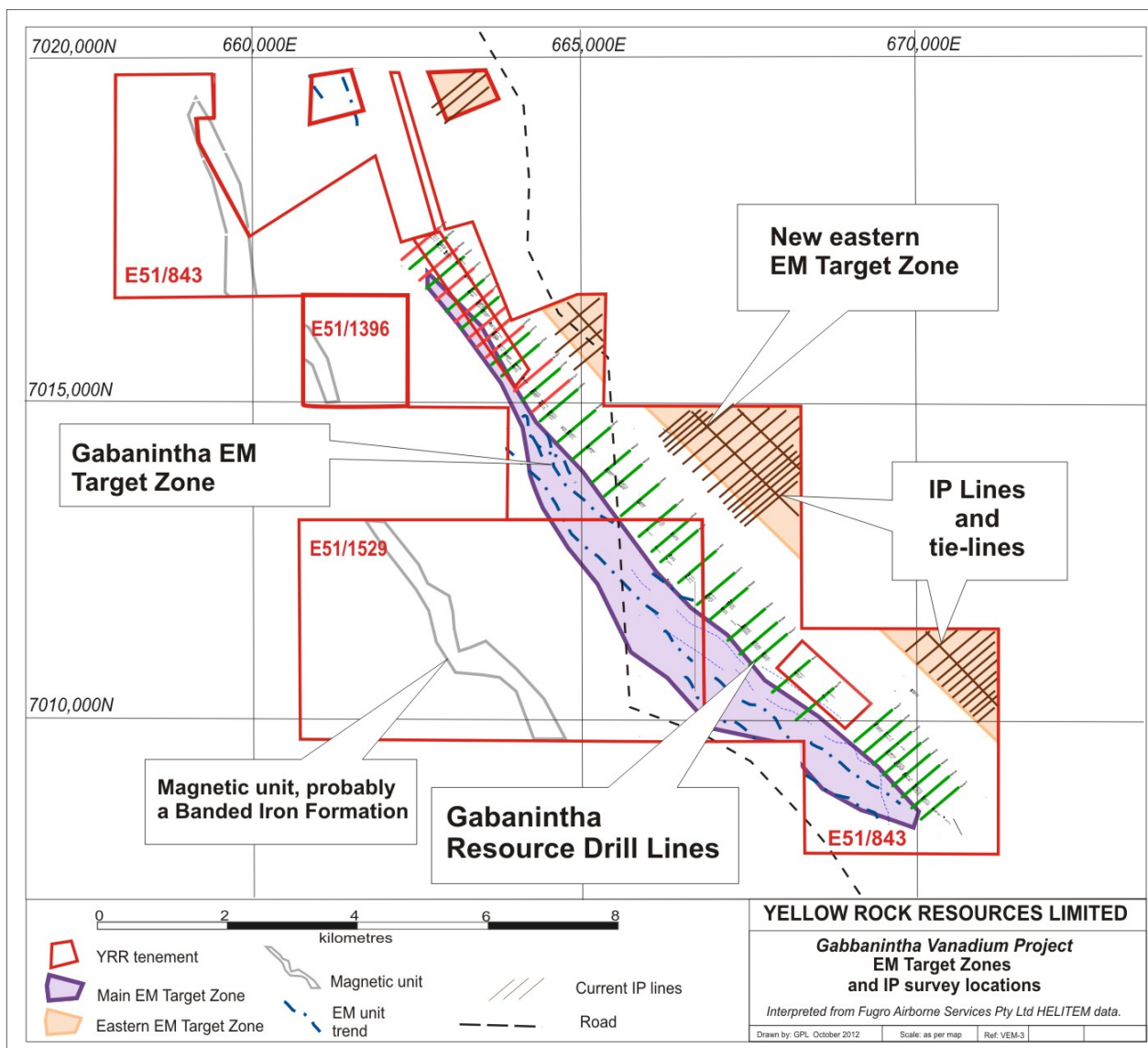


Figure 4 – Plan showing location of new eastern EM target zone magnetic units and drill hole locations.

There are two distinct large conductors at Gabanintha, one in the southwest down-dip from the Gabanintha resource and a new conductor, the Heather conductor, to the northeast.

The former has approximately 7.5 kilometres of strike and the latter about 5 kilometres. Both conductors plunge to the south and have variable dips. Whereas the main conductor has an average dip of 50 degrees or less to the southwest, the Heather conductor appears to vary from 30 degrees to 70 degrees dip northeast. As can be seen in the orthographic projection on Figure 5 and the schematic on Figure 6, the Heather conductor is separated from the main conductor by about one kilometre and is untested by drilling.

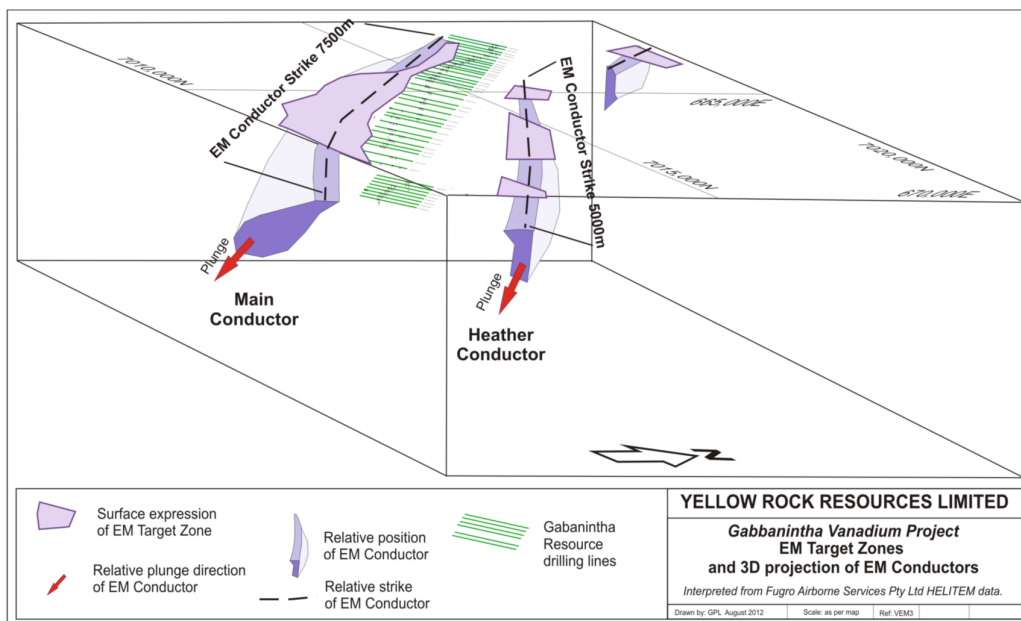


Figure 5 – 3D orthographic projection of conductor zones in relation to Gabanintha resource drilling.

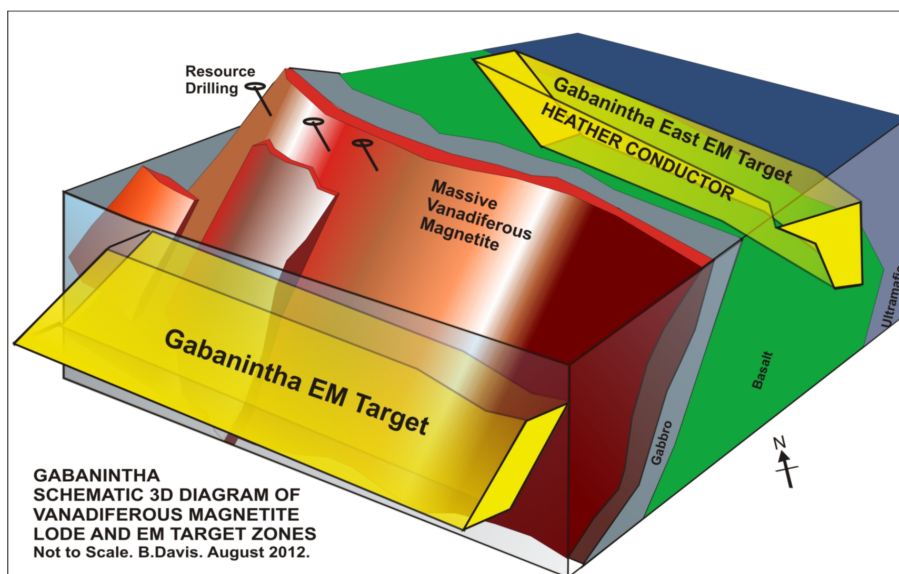


Figure 6 – Interpreted 3D schematic diagram of EM target zones at Gabanintha.



Yellow Rock Resources Limited ABN 90 116 221 740
Address 420 Newcastle Street | West Perth | WA | 6005
Mailing Address PO Box 332 | Leederville | WA | 6903
web www.yellowrock.com.au
p (08) 9227 6300 **f** (08) 9227 6400 **e** info@yrr.com.au

YRR HAS COMPLETED INDUCED POLARIZATION (IP) PROGRAM OVER NEW EM TARGET ZONE EAST OF GABANINTHA DEPOSIT

Modelling of the helicopter-borne Time domain Electromagnetic and Magnetic (HELITEM) survey at Gabanintha by Fugro geophysicists has led to the identification of a new EM zone parallel to, and about one kilometre east of, the Gabanintha FeTiV magnetite deposit.

It is believed that the EM target zone is extensive (along the length of the tenement) and variable in depth and dip, as well as intensity. Some of the modelling shows a west dipping zone which may be spatially related to the ultramafic/basalt contact.

In order to complete further modelling on this new eastern EM feature, surface IP surveys have been conducted. Approximately 35 IP survey lines in a NE orientation and four tie-lines parallel to strike and over 750 field measurement stations were completed.

IP is recognised as a method by which drill targets can be better defined, prior drilling, with the potential to provide considerable saving in drilling costs.

Partly paid shares legal proceedings

Yellow Rock Resources has commenced legal proceedings to recover moneys against partly paid shareholders who have failed to pay the call up. They are as follows:

David Valentino: \$583,500.00

Jamora Nominees Pty Ltd: \$544,600.00

Tedeco Pty Ltd: \$544,600

Miriam Yussoff: \$175,050.00



The current JORC resource estimate for Gabanintha is set out in the attached table:

Material	JORC Resource Class	Million tonnes	In Site Bulk Density	V ₂ O ₅ %	Fe%	TiO ₂ %	SiO ₂ %	Al ₂ O ₃ %	LOI%
High Grade	Indicated	14.4	4.17	1.03	42.14	12.07	11.42	7.84	3.37
	Inferred	46.0	4.16	0.97	42.15	11.19	12.37	8.28	3.20
	Sub-total	60.4	4.16	0.98	42.15	11.40	12.15	8.17	3.24
Low Grade	Indicated	42.7	2.71	0.44	23.37	6.08	29.25	18.09	8.94
	Inferred	22.7	2.67	0.42	22.65	6.08	30.62	16.96	6.92
	Sub-total	65.4	2.70	0.43	23.12	6.08	29.73	17.70	8.24
Total	Indicated	57.0	2.97	0.59	28.10	7.59	24.76	15.51	7.54
	Inferred	68.8	3.51	0.79	35.70	9.50	18.40	11.15	4.43
	Sub-total	125.8	3.25	0.70	32.26	8.64	21.29	13.13	5.84

Note - In-situ dry bulk density has been assigned based on V₂O₅ grade, therefore density values quoted here are weighted average values. The Mineral Resource was estimated as a block model within constraining wireframes based upon logged geological boundaries and grade cut-offs of 0.3% V₂O₅ for Low Grade (LG) and 0.7% V₂O₅ for High Grade (HG). Tonnages have been rounded to reflect that this is an estimate.

Competent person's statement

It is common practice for a company to comment on and discuss its exploration in terms of target size and type. In addition surface sampling assays and drill sample results may also be discussed in the context of information describing the presence of anomalous mineral content. The above information relating to Exploration Targets should not be misunderstood or misconstrued as an estimate of Mineral Resources or Mineral Reserves. Hence the terms Resource (s) or Reserve(s) have not been used in this context. The potential quantity and grade is conceptual in nature, since there has been insufficient exploration to define a Mineral Resource. It is uncertain if further exploration will result in the determination of a Mineral Resource

The information in this statement that relates to Exploration Targets, Exploration Estimates, Exploration Results, Mineral Resources or Ore Reserves is based on information compiled by independent consulting geologist Brian Davis B.Sc (hons), Dip.Ed. Mr Davis is a Member of The Australian Institute of Mining and Metallurgy and the Australian Institute of Geoscientists. Brian Davis is employed by Geologica Pty Ltd.

Mr Davis has sufficient experience which is relevant to the style of mineralization and type of deposit under consideration and to the activity which is undertaken to qualify as a Competent Person as defined in the 2004 Edition of the 'Australasian Code for Reporting of Exploration Results, Mineral Resources and Ore Reserves'. Mr. Davis consents to the inclusion in the report of the matters based on the information made available to him, in the form and context in which it appears".

Sydney Chesson
 Chairman
 31 January 2013