



26 November 2013

Outstanding Copper and Gold Intersections in Scout Drilling Program into Gabanintha IP Anomalies

- Yellow Rock is pleased to announce outstanding results from three Reverse Circulation holes drilled into the Northern Sector of the Gabanintha tenements in the Mid-West of Western Australia.
- GRC1159 intersected 5m at 9.64 g/t Au and 0.18% Cu from 58m down hole
- GRC1158 intersected 1m at 11.4 g/t Au and 12.3% Cu within an interval of 5m at 8.72 g/t Au and 3.05% Cu from 31m down hole.
- GRC1157 intersected 1m at 6.99 g/t Au within an interval of 10m at 2.59 g/t Au and 0.10% Cu from 33m down hole as well as 1m at 1.26 g/t Au at 50m down hole
- Minor intercepts of copper and gold included GRC1149 with 1m at 0.29% Cu and 0.36 g/t Au at 61m down hole, GRC1150 with 1m at 0.11% Cu and 0.91 g/t Au at 105m down hole
- Drill results from the Eastern Sector of Gabanintha also confirm significant copper in hole GRC1152 18m at 0.42% Cu (including 2m at 2.19% Cu) from 7m down hole.
- Other significant intercepts in the Eastern Sector include GRC1151 with 9m at 0.15% Cu from 277m down hole, GRC1153 with 1m at 0.16% Cu from 299m down hole, GRC1155 with 1m at 0.65 g/t Au from 109m down hole and GRC1154 with 2m at 0.14% Cu from 344m down hole.
- The eastern “Heather” IP Anomaly appears to be sourced mainly from magnetite in mafic and ultramafic units and some drill holes had large (exceeding 60m) intervals of disseminated magnetite logged from the RC chips. To date there is no significant copper or gold within the magnetite-bearing samples. No iron assays have yet been completed on these magnetite-rich zones.

See Figures 2 and 3 for collar locations and also the summary table in the Appendix at the end of this announcement.

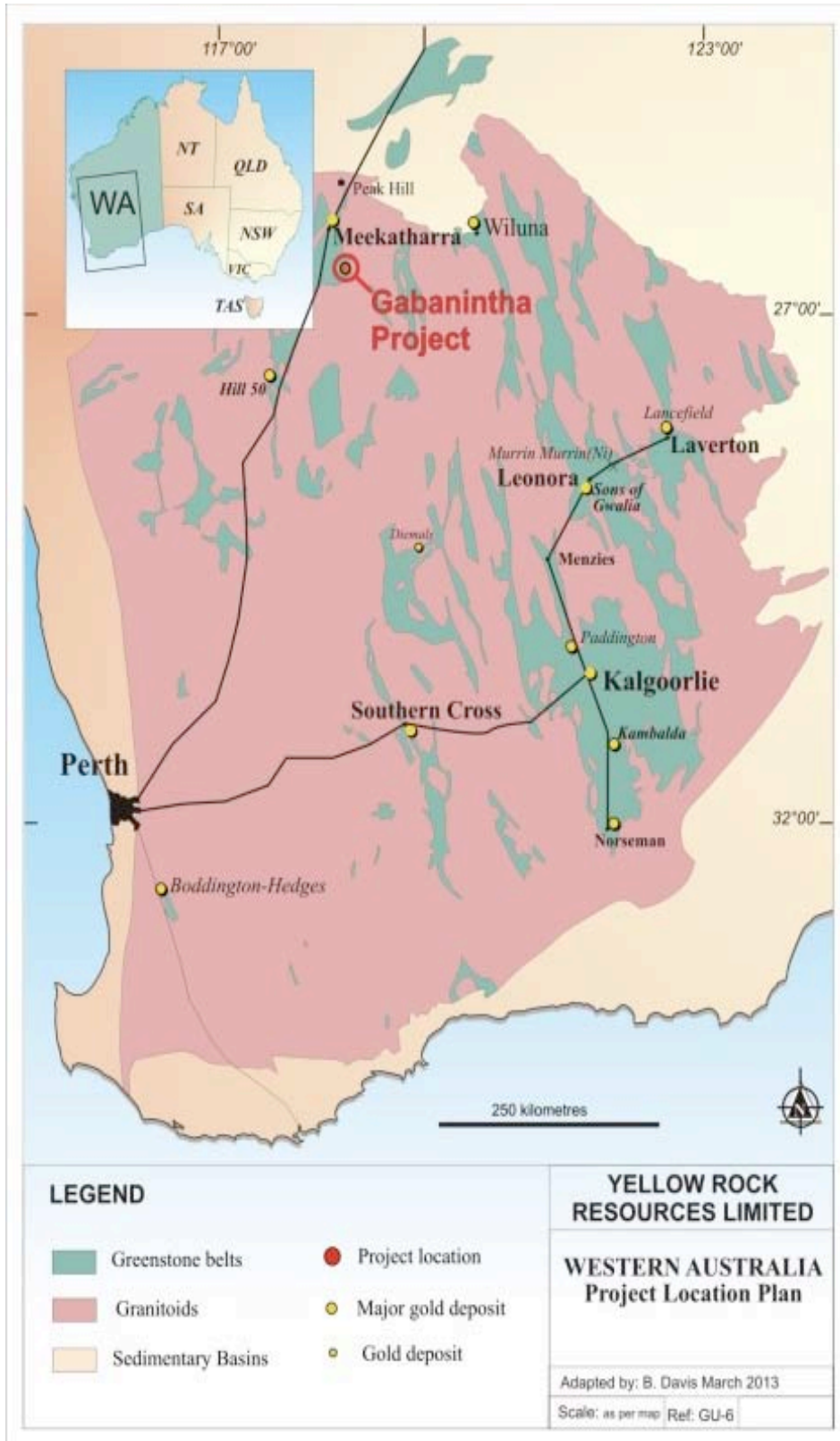


Figure 1 - Project Location Map



Yellow Rock Resources Limited ABN 90 116 221 740
Address 420 Newcastle Street | West Perth | WA | 6005
Mailing Address PO Box 332 | Leederville | WA | 6903
web www.yellowrock.com.au
p (08) 9227 6300 **f** (08) 9227 6400 **e** info@yrr.com.au

Yellow Rock is pleased to announce outstanding results from three Reverse Circulation holes drilled into the Northern Sector of the Gabanintha tenements in the Mid-West of Western Australia.

GRC1157 intersected 10 metres at 2.59 g/t Au and 0.10% Cu from 33m to 43m down hole. This includes 1m at 6.99 g/t Au from 39 to 40 metres down hole. Also intersected in the same hole was 1 metre at 1.26 g/t Au from 50m to 51m and 1 metre at 3.46 g/t Au and 0.5% Cu from 143m to 144m down hole. This hole was drilled in the northern part of E51/843 to intersect a possible N-S structure.

GRC1158 intersected 5 metres at 8.72 g/t Au and 3.05 % Cu from 31m to 36m down hole - including 1m at 11.4 g/t Au and 12.3 % Cu and was drilled into a SW-NE trending structure and is a new target area.

GRC1159 intersected 5m at 9.64 g/t Au and 0.18% Cu from 58m to 63m down hole

Minor intercepts of copper and gold included GRC1149 with 1m at 0.29% Cu and 0.36 g/t Au at 61m down hole, GRC1150 with 1m at 0.11% Cu and 0.91 g/t Au at 105m down hole

Results from the scout drilling of the IP anomaly in the Eastern Sector of Gabanintha also confirm significant copper in hole GRC1152 from 7m to 24m down hole where 18m was intersected an average of 0.42% Cu, including 2m at 2.19% Cu. This hole is in the oxide zone and associated with hematite and minor magnetite on a contact zone between basalt and ultramafic units.

Other significant intercepts in the Eastern Sector include GRC1151 with 9m at 0.15% Cu from 277m to 286m down hole, GRC1153 with 1m at 0.16% Cu from 299 to 300m down hole, GRC1155 with 1m at 0.65 g/t Au from 109-110m down hole and GRC1154 with 2m at 0.14% Cu from 344 to 346m down hole. These intervals correlate with logged chalcopyrite in RC chips.

The eastern "Heather" IP Anomaly appears to be sourced mainly from magnetite in mafic and ultramafic units and some drill holes had large (exceeding 60m) intervals of disseminated magnetite logged from the RC chips. To date there is no significant copper or gold within the magnetite-bearing samples. No iron assays have yet been completed on these magnetite-rich zones.

See Figures 2 and 3 for collar locations and also the summary table in the Appendix at the end of this announcement.

Note that all depths and intersection widths are in metres down hole, not expressed as true widths or vertical distances. The reason for this is that the true azimuths and dips of the mineralised intervals are unknown because they are derived from logging RC chips. Therefore any extrapolations of these measurements are interpretive and section diagrams remain schematic only.

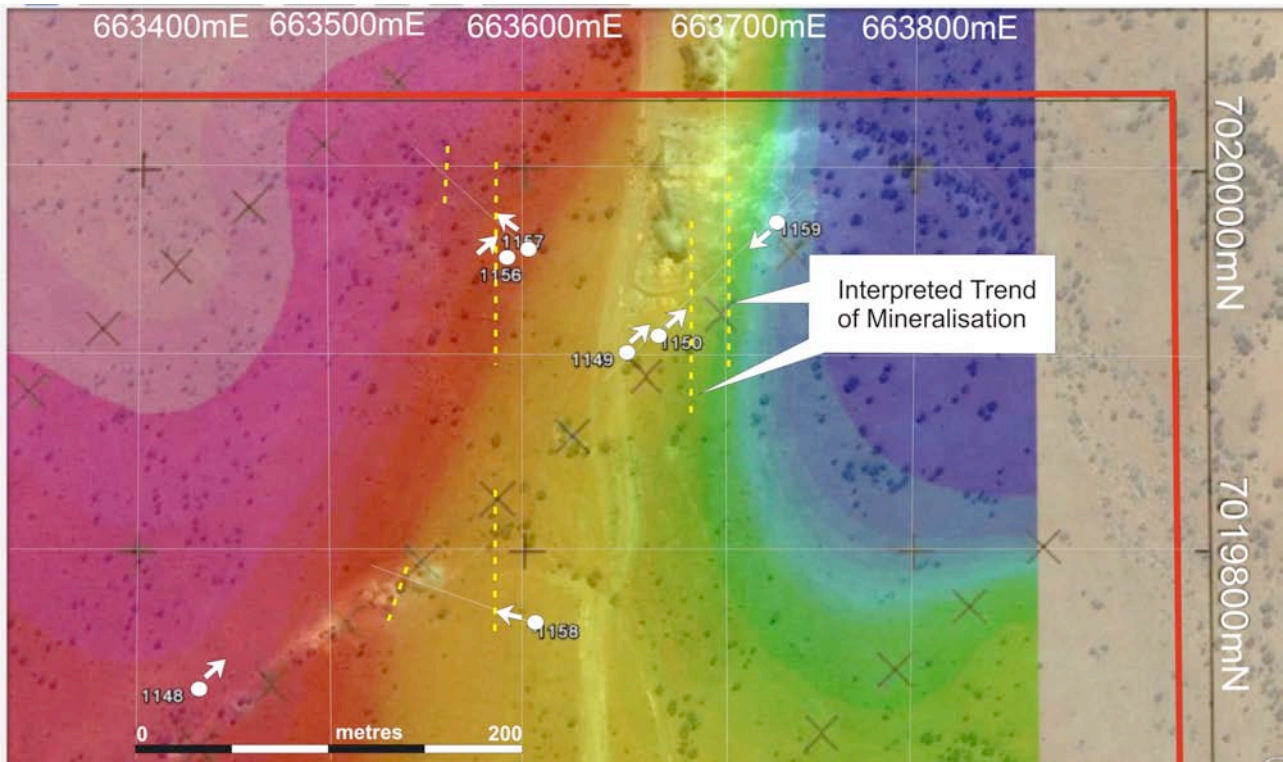


Figure 2 – Drilled collar sites GRC 1148 to GRC 1150 and GRC 1156 to GRC 1159 on background of Northern Sector IP anomaly. Arrows show UTM azimuth at dips at -60 degrees for all holes.

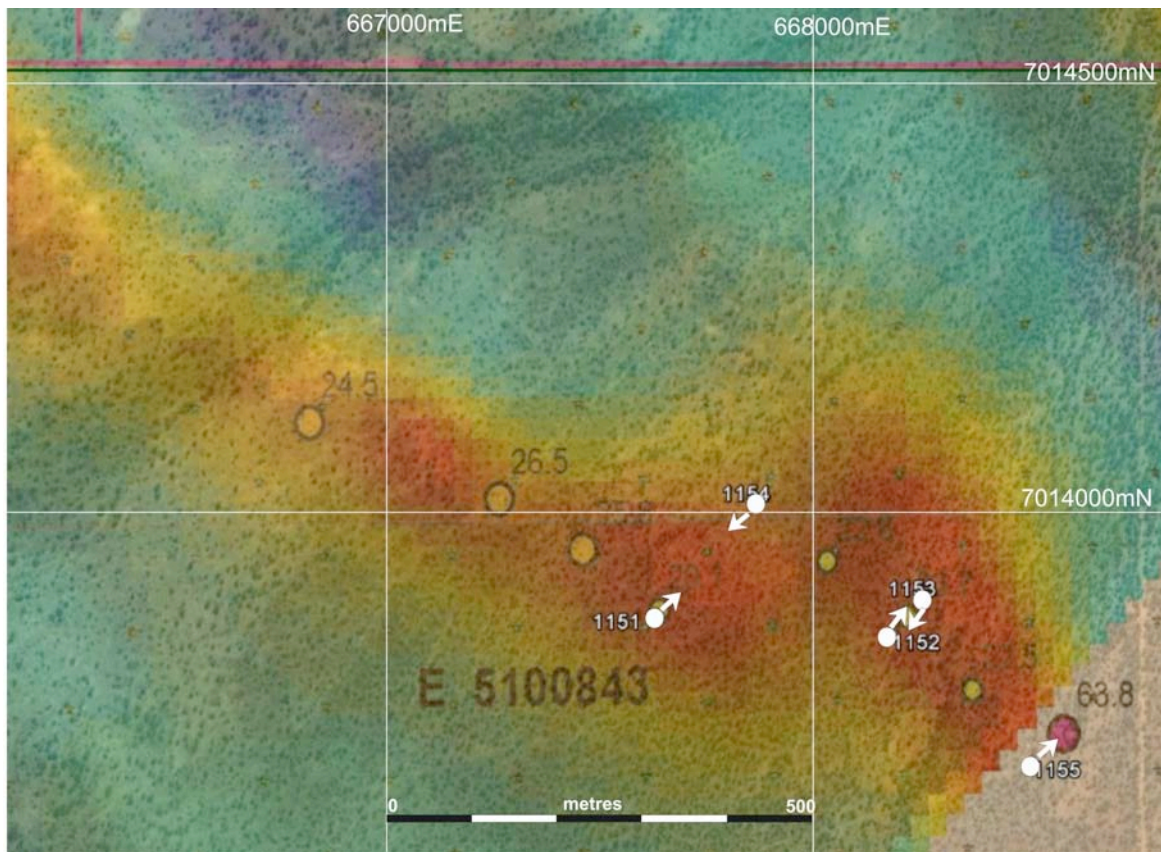


Figure 3 – Drilled collar sites GRC 1151 to GRC 1155 on background of Eastern Sector IP ("Heather") anomaly. Arrows show UTM azimuth and dips at -60 degrees for all holes.

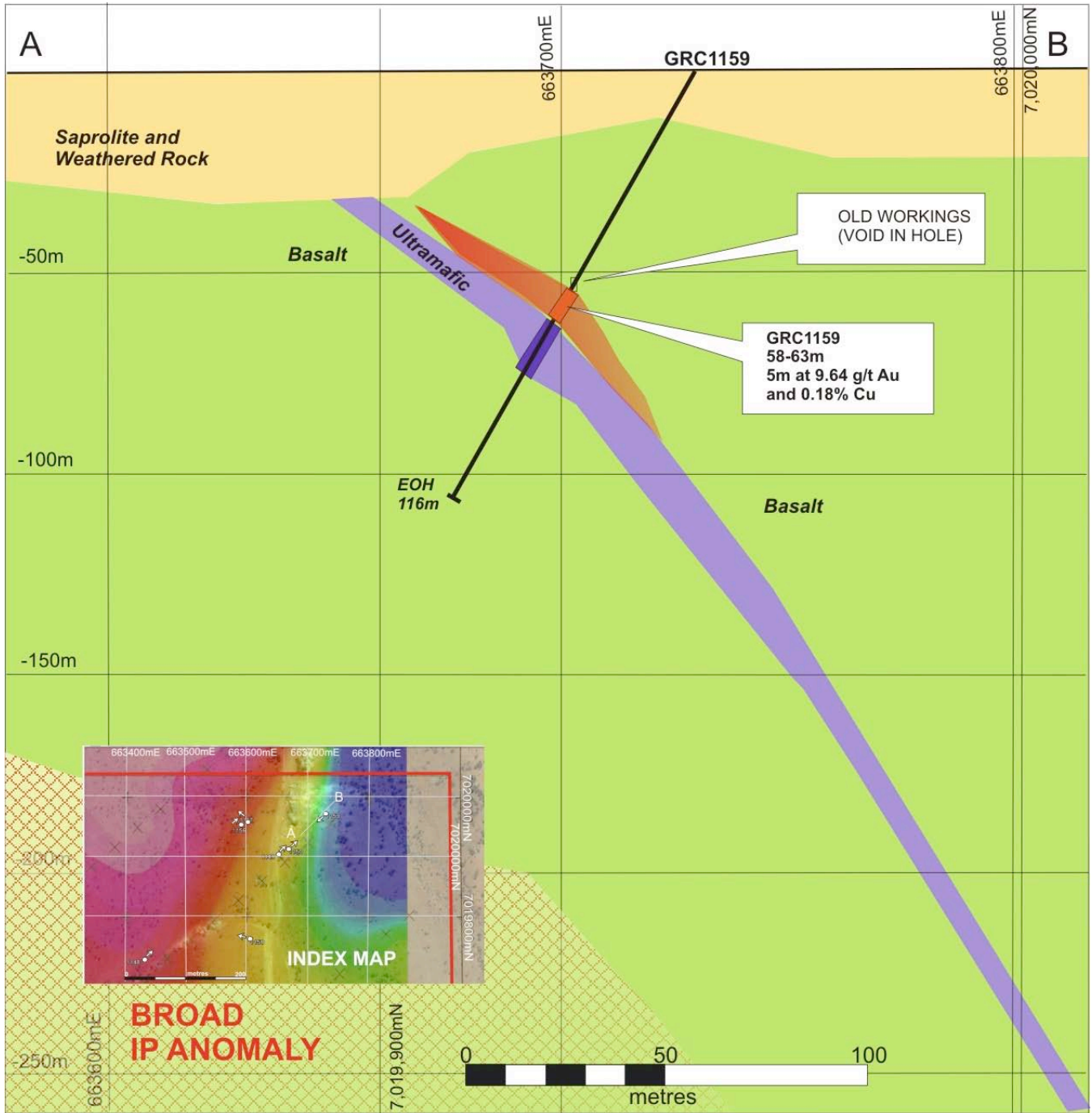


Figure 4 – Schematic Cross Section of drill hole GRC 1159 in the Northern Sector

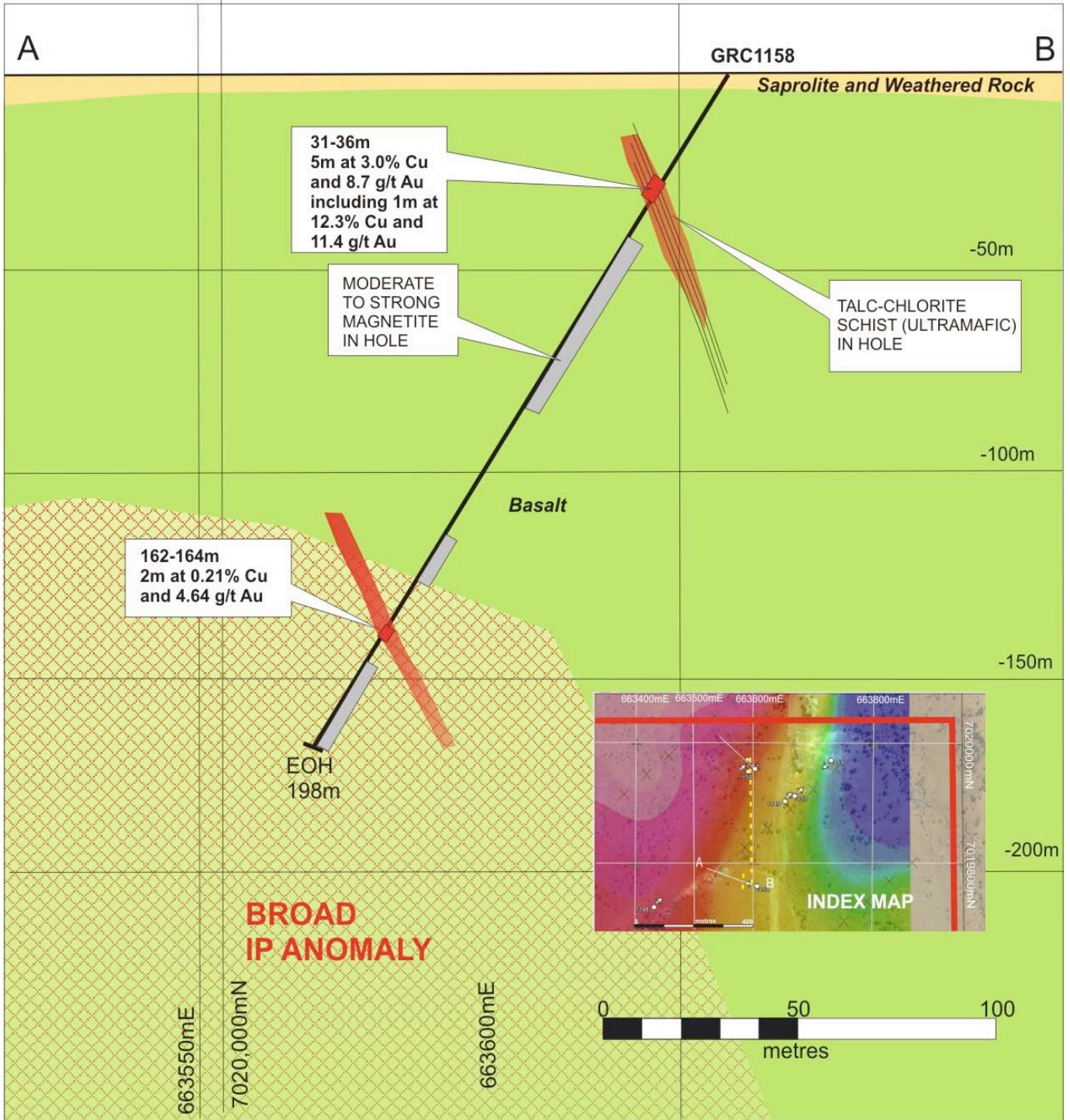


Figure 5 – Schematic Cross Section of drill hole GRC1158 in the Northern Sector

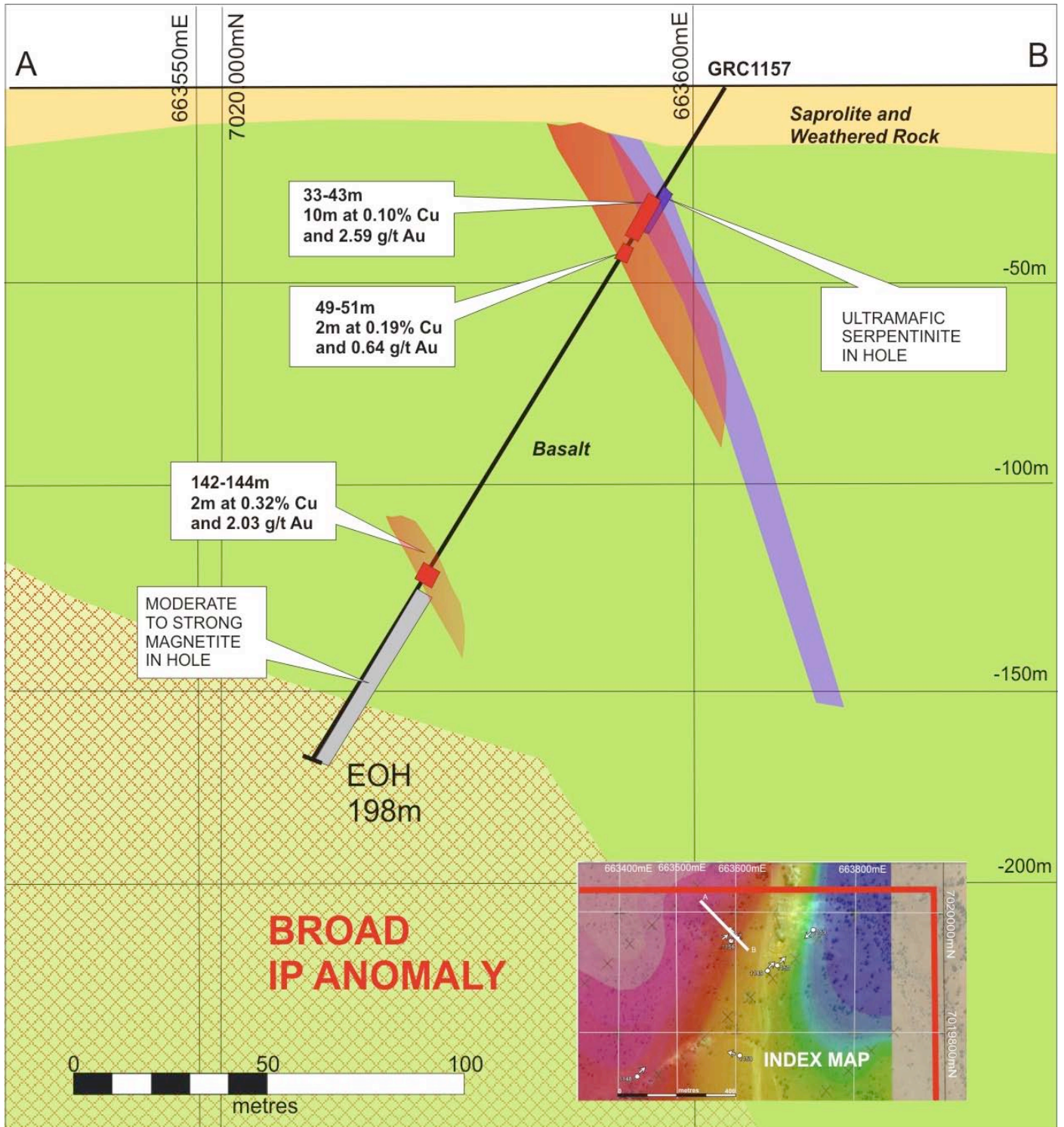


Figure 6 – Schematic Cross Section of drill hole GRC1157 in the Northern Sector



Yellow Rock Resources Limited ABN 90 116 221 740
Address 420 Newcastle Street | West Perth | WA | 6005
Mailing Address PO Box 332 | Leederville | WA | 6903
web www.yellowrock.com.au
p (08) 9227 6300 **f** (08) 9227 6400 **e** info@yrr.com.au

It is pleasing to note that in this 12-hole scout program good assay values up to 12% copper and up to 23 g/t gold are a first for the Northern Sector of E51/843.

The results to date confirm that YRR has discovered significant mineralized structures and that there is strong exploration upside for copper and gold on the Gabanintha tenements. Further exploration drilling is planned to follow up these very encouraging initial results. Only two holes had no significant results.

Yours sincerely,

Leslie Ingraham
Executive Director

The information in this statement that relates to Exploration Targets, Exploration Estimates, Exploration Results, Mineral Resources or Ore Reserves is based on information compiled by independent consulting geologist Brian Davis B.Sc (hons), Dip.Ed.

Mr Davis is a Member of The Australian Institute of Mining and Metallurgy and the Australian Institute of Geoscientists. Brian Davis is employed by Geologica Pty Ltd.

Mr Davis has sufficient experience which is relevant to the style of mineralization and type of deposit under consideration and to the activity which is undertaken to qualify as a Competent Person as defined in the 2004 Edition of the 'Australasian Code for Reporting of Exploration Results, Mineral Resources and Ore Reserves'. Mr. Davis consents to the inclusion in the report of the matters based on the information made available to him, in the form and context in which it appears".



Yellow Rock Resources Limited ABN 90 116 221
 Address 420 Newcastle Street | West Perth | WA | 6
 Mailing Address PO Box 332 | Leederville | WA | 6
 web www.yellowrock.com
 p (08) 9227 6300 f (08) 9227 6400 e info@yrr.com

SUMMARY TABLE OF DRILLING RESULTS FOR ASSAYS ABOVE 0.1% Cu and/or 0.5 g/t Au

Hole ID	Easting UTM Zone 51	Northing UTM Zone 51	Relative Level (metres)	Azimuth Degrees True north	Dip	End of Hole Depth (metres)	Intercept 1	Intercept 2	Intercept 3
GRC 1159	663743mE	7019954mN	468	268	-60 ⁰	116	58-63m (5m) at 9.64 g/t Au and 0.18% Cu		
GRC 1158	663612mE	7019732mN	468	290	-60 ⁰	198	31-36m (5m) at 8.72 g/t Au and 3.05 % Cu - including 1m at 11.4 g/t Au and 12.3 % Cu	162 – 164m (2m) at 4.64 g/t Au and 0.21% Cu	
GRC 1157	663611mE	7019942mN	468	315	-60 ⁰	198	33-43m (10m) at 2.59 g/t Au and 1016 ppm Cu	49-51m (2m) at 0.64 g/t Au and 1921 ppm Cu	142-144m (2m) at 2.03 g/t Au and +0.32 % Cu
GRC 1156	663599mE	7019937mN	468	050	-60 ⁰	204	No significant assays		
GRC 1155	668332mE	7013604mN	468	050	-60 ⁰	168	109-110m (1m) at 0.65 g/t Au		
GRC 1154	668005mE	7013919mN	468	230	-60 ⁰	348	344-346m (2m) at 0.14% Cu		
GRC 1153	668201mE	7013804mN	468	230	-60 ⁰	330	299-300m (1m) at 0.16 % Cu		
GRC 1152	668167mE	7013757mN	469	050	-60 ⁰	330	7-24m (18m) at 0.42% Cu Including 2m at 2.19% Cu		
GRC 1151	667888mE	7013785mN	475	050	-60 ⁰	354	277-286m (9m) at 0.15% Cu		
GRC 1150	663679mE	7019892mN	475	050	-60 ⁰	300	105-106m (1m) at 0.11% Cu and 0.91 g/t Au		
GRC 1149	663663mE	7019879mN	498	050	-60 ⁰	300	61-62m (1m) at 0.29% Cu and 0.36 g/t Au		
GRC 1148	663434mE	7019699mN	490	050	-60 ⁰	255	No significant assays		

NOTE: all depths are in metres down hole, because currently the true thickness of mineralisation from RC drilling is unknown