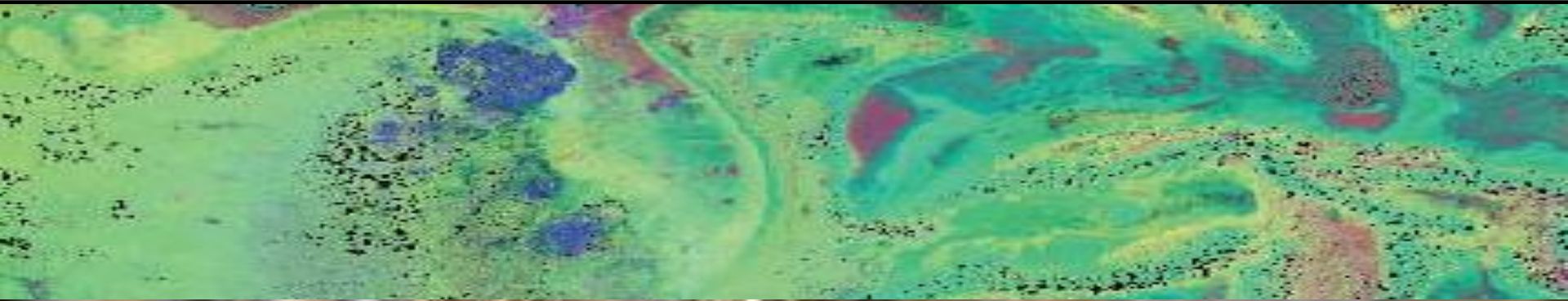




ARUMA RESOURCES



DRILLING FOR COPPER AND GOLD

Peter Schwann
Managing Director

Aruma Resources Limited – Presentation
May 2014

DISCLAIMER AND COMPETENT PERSON'S STATEMENT

Forward Looking Statements Caution

Certain statements contained in this document constitute forward looking statements. Such forward-looking statements are based on a number of estimates and assumptions made by the Company and its consultants in light of experience, current conditions and expectations of future developments which the Company believes are appropriate in the current circumstances. These estimates and assumptions while considered reasonable by the Company are subject to known and unknown risks, uncertainties and other factors which may cause the actual results, achievements and performance of the Company to be materially different from the future results and achievements expressed or implied by such forward-looking statements. Investors are cautioned that forward looking information is no guarantee of future performance and accordingly, investors are cautioned not to place undue reliance on these forward-looking statements

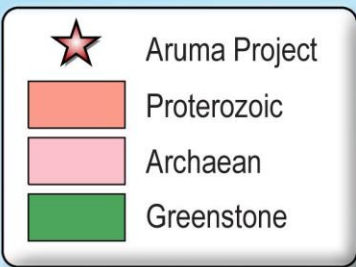
Competent Person Statement

Information in this announcement that relates to Mineral Resource and exploration results is based on information compiled by Mr Peter Schwann who is the Managing Director of Aruma Resources Limited. Mr Schwann is a Chartered Professional (Geology) and Fellow of the Australasian Institute of Mining and Metallurgy and has sufficient experience which is relevant to the style of mineralisation and type of deposit under consideration and to the activity which they are undertaking, to qualify as Competent Person as defined in the 2012 Edition of the "Australasian Code for Reporting of Exploration Results, Mineral Resources and Ore Reserves". Mr Schwann consents to the inclusion in the document of the information in the form and context in which it appears.

OUR GOAL : MINING OPERATION IN WA

CURRENT POSITION

- **ADVANCED EXPLORATION PROJECTS**
- **FOCUS ON COPPER AND GOLD**
- **EXPERIENCED TEAM**
- **STRUCTURE AND MINERALISATION IDENTIFIED**
- **CLOSE TO INFRASTRUCTURE**
- **CASH (6 MAY 2014) \$2.8M**



THE KEY PROJECTS

Bulloo Downs Copper

- 100km south of Newman

Glandore Gold

- 40km east of Kalgoorlie
- includes Clinker Hill

THE ARUMA MODEL

Sea Water 20°C

DEPOSITION

HOT Water 400°C
Metals now
HS Complex

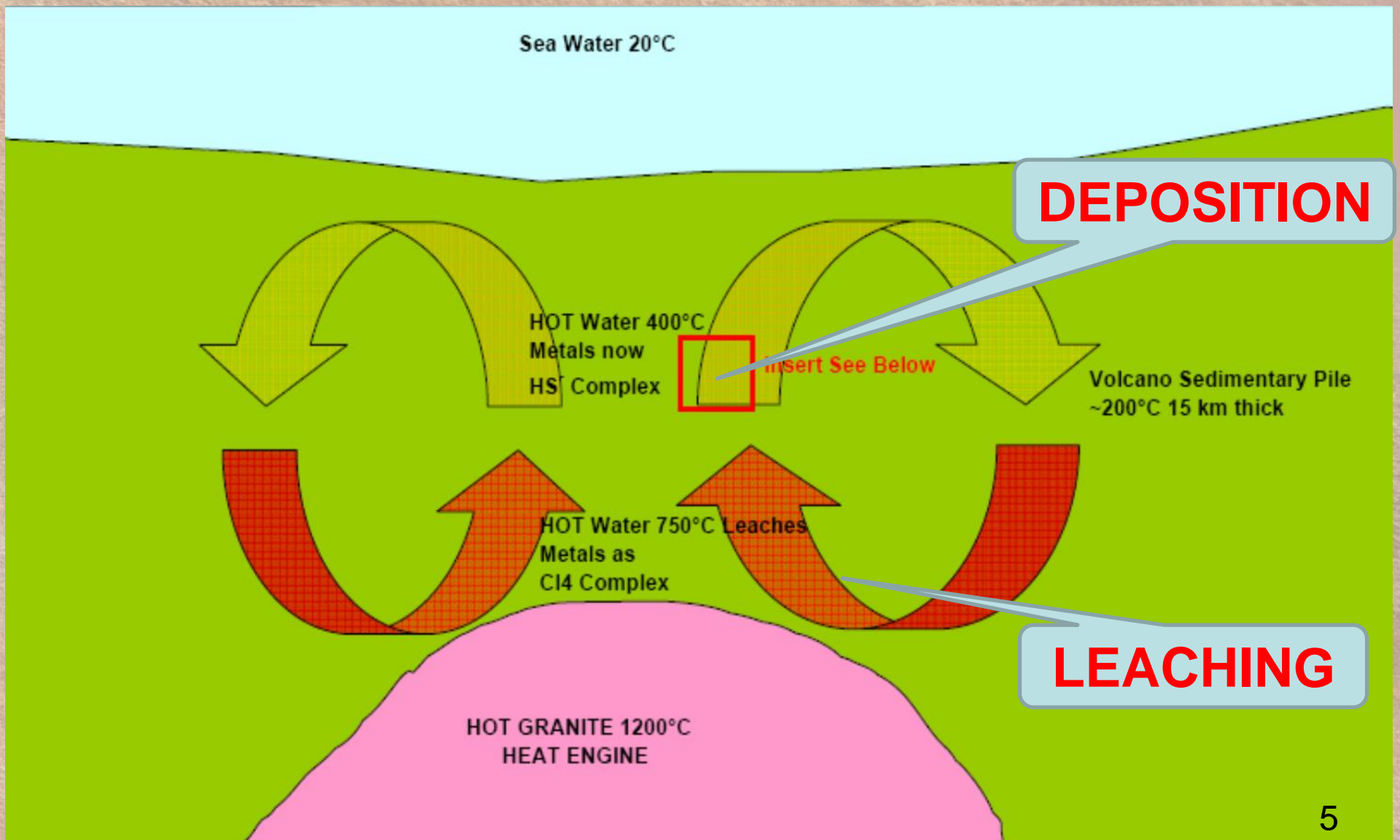
Insert See Below

Volcano Sedimentary Pile
~200°C 15 km thick

HOT Water 750°C Leaches
Metals as
Cl₄ Complex

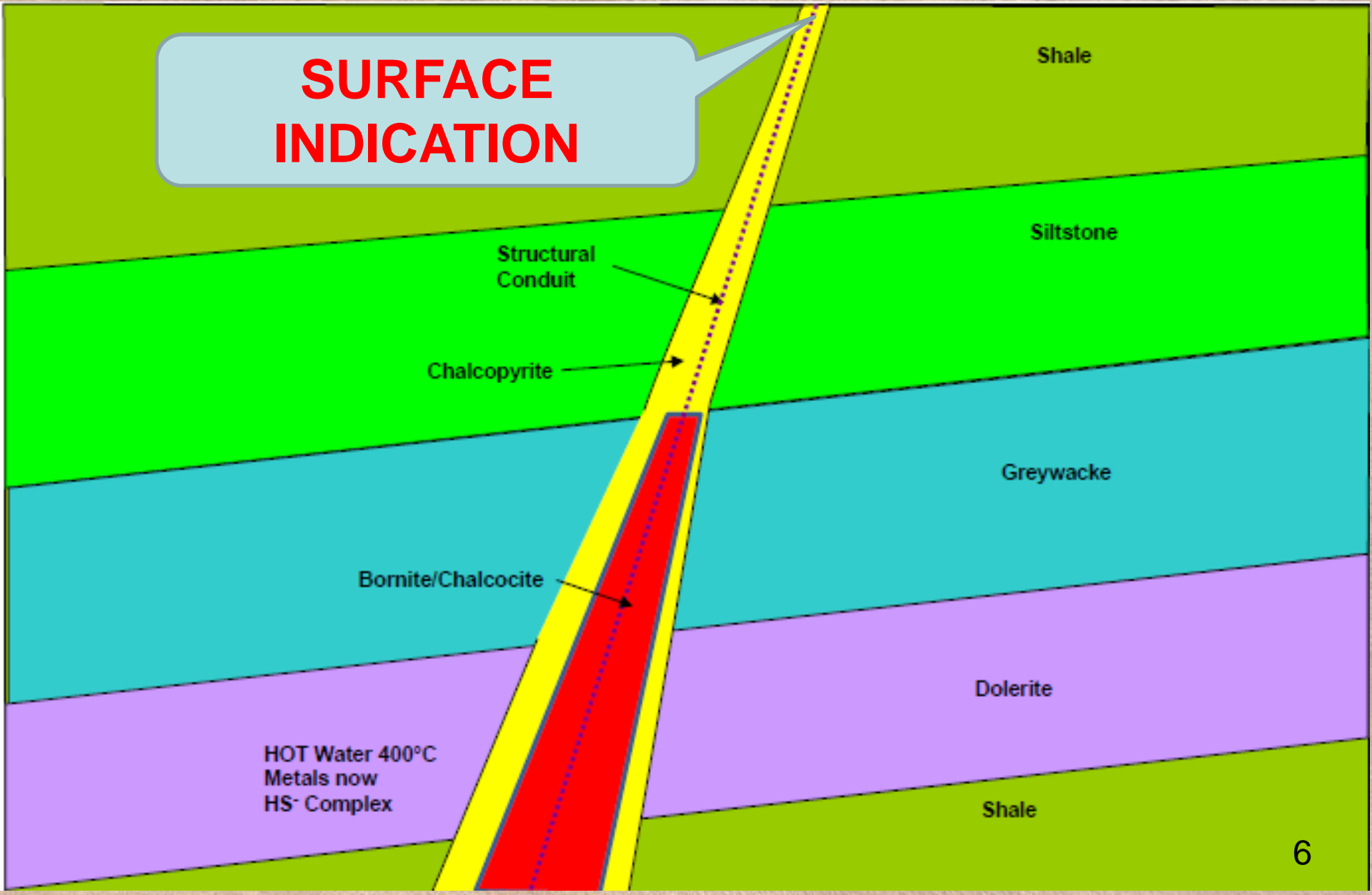
LEACHING

HOT GRANITE 1200°C
HEAT ENGINE



THE MINERALISATION

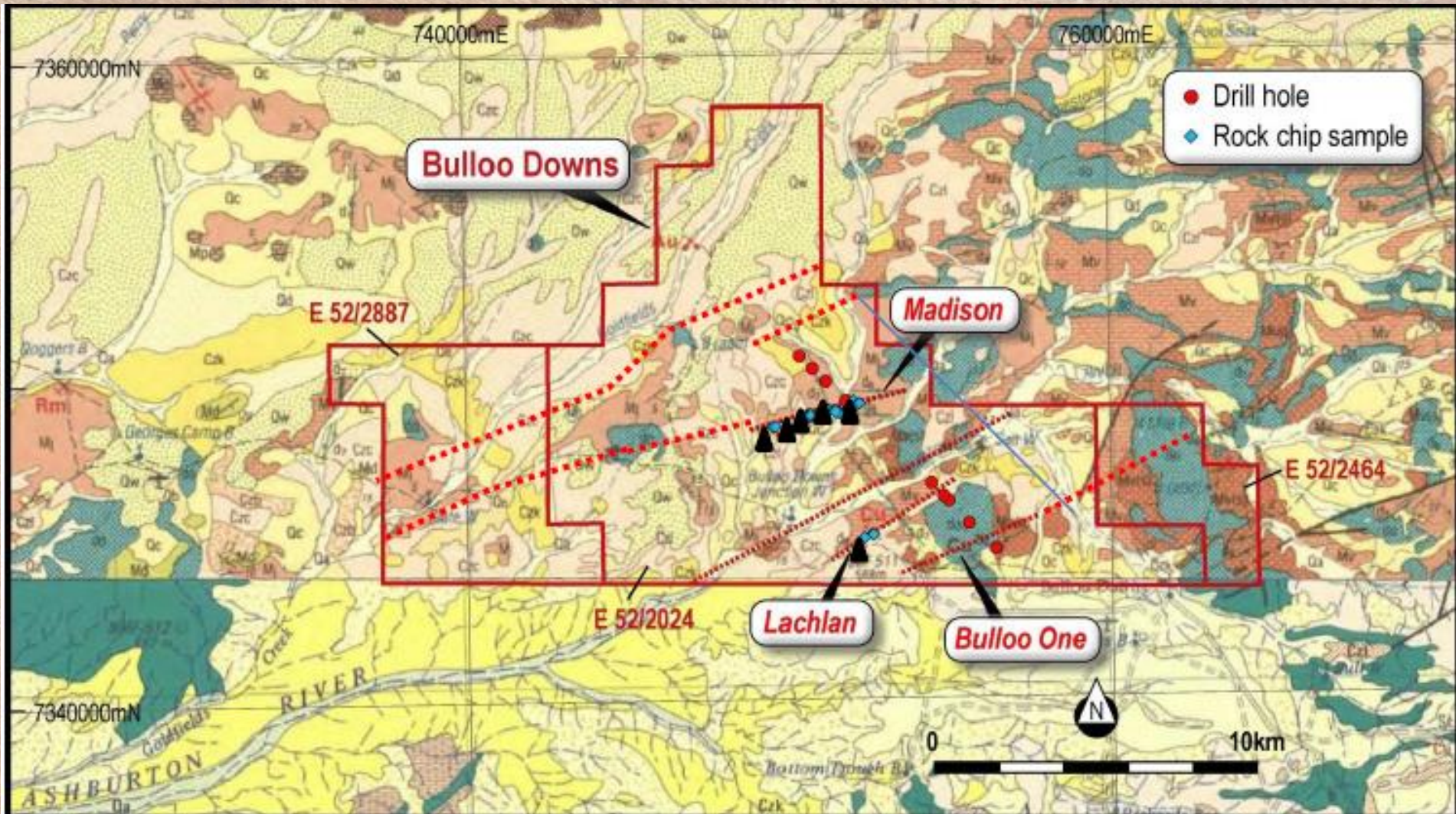
**SURFACE
INDICATION**



SURFACE INDICATION - Madison East

8% Copper in surface gossan

BULLOO DOWNS COPPER

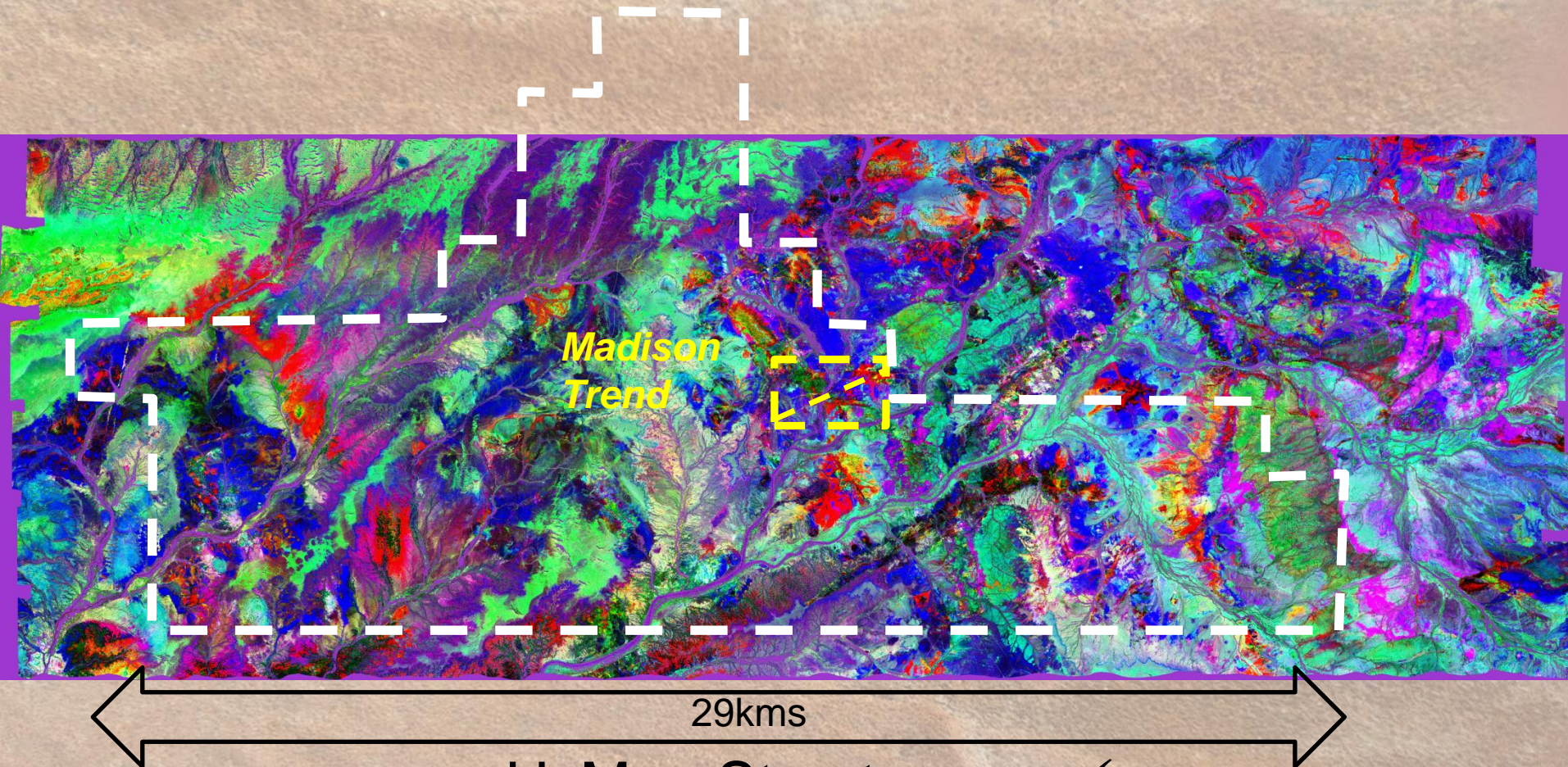


DRILLING INDICATED BY BLACK TRIANGLES

BULLOO DOWNS COPPER

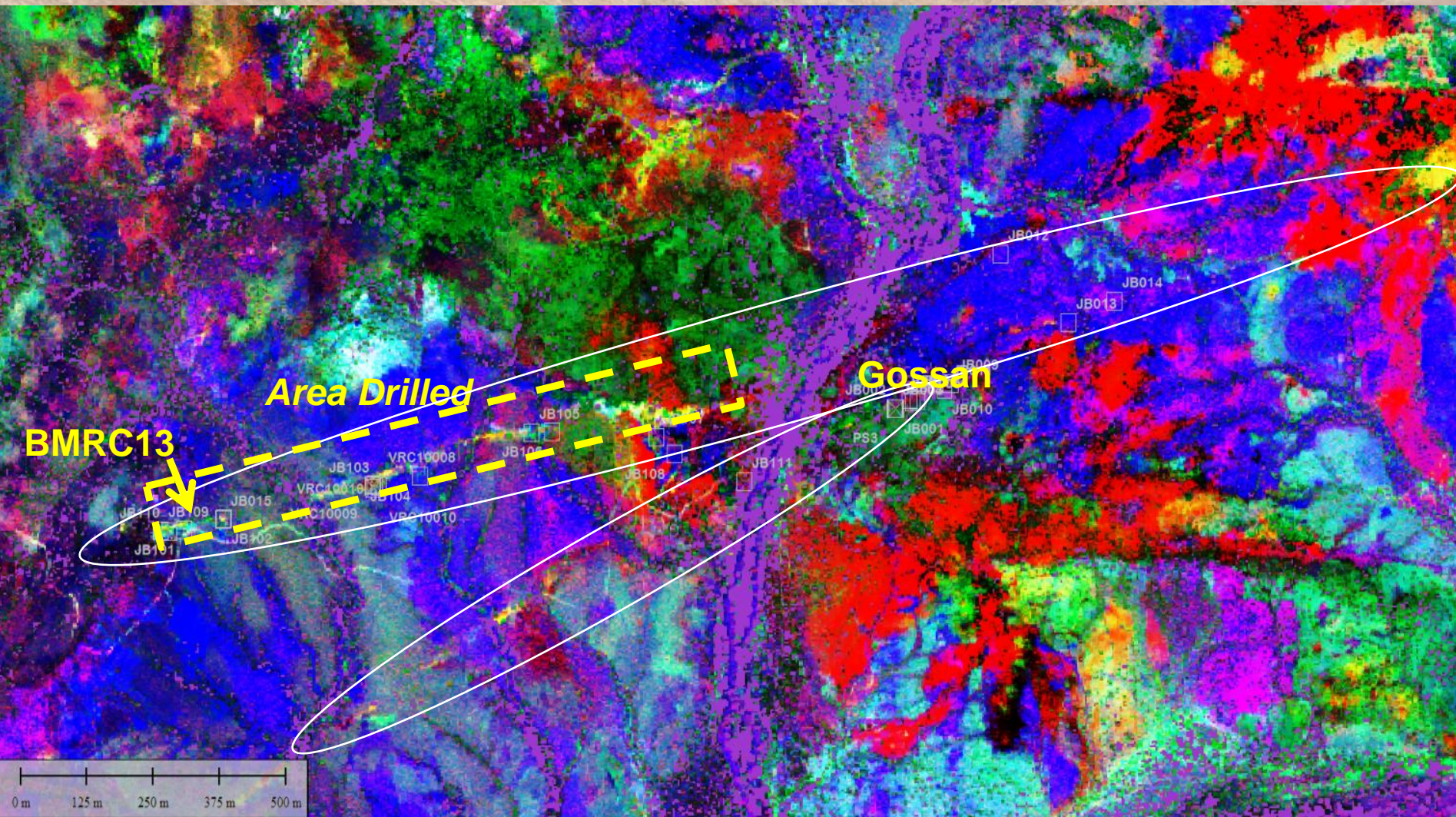
- A new copper province discovered
- Rock Chips up to 37.9% Cu (Lachlan)
- 4m at 2.2% Cu in first pass drilling program
- 8 of 14 holes hot mineralisation (every line)
- HyMap shows alteration for over 60km in multiple strike zones
- Hydrothermal alteration and mineralisation
- Similarities to Thaduna - Green Dragon:
In reactive sediments over a deep granitic basement on deep structures

HYMAP IMAGE OF BULLOO PROJECT



- HyMap Structure ✓
- Sampling ✓
- Drilling ✓

HYMAP IMAGE OF DRILLED AREA

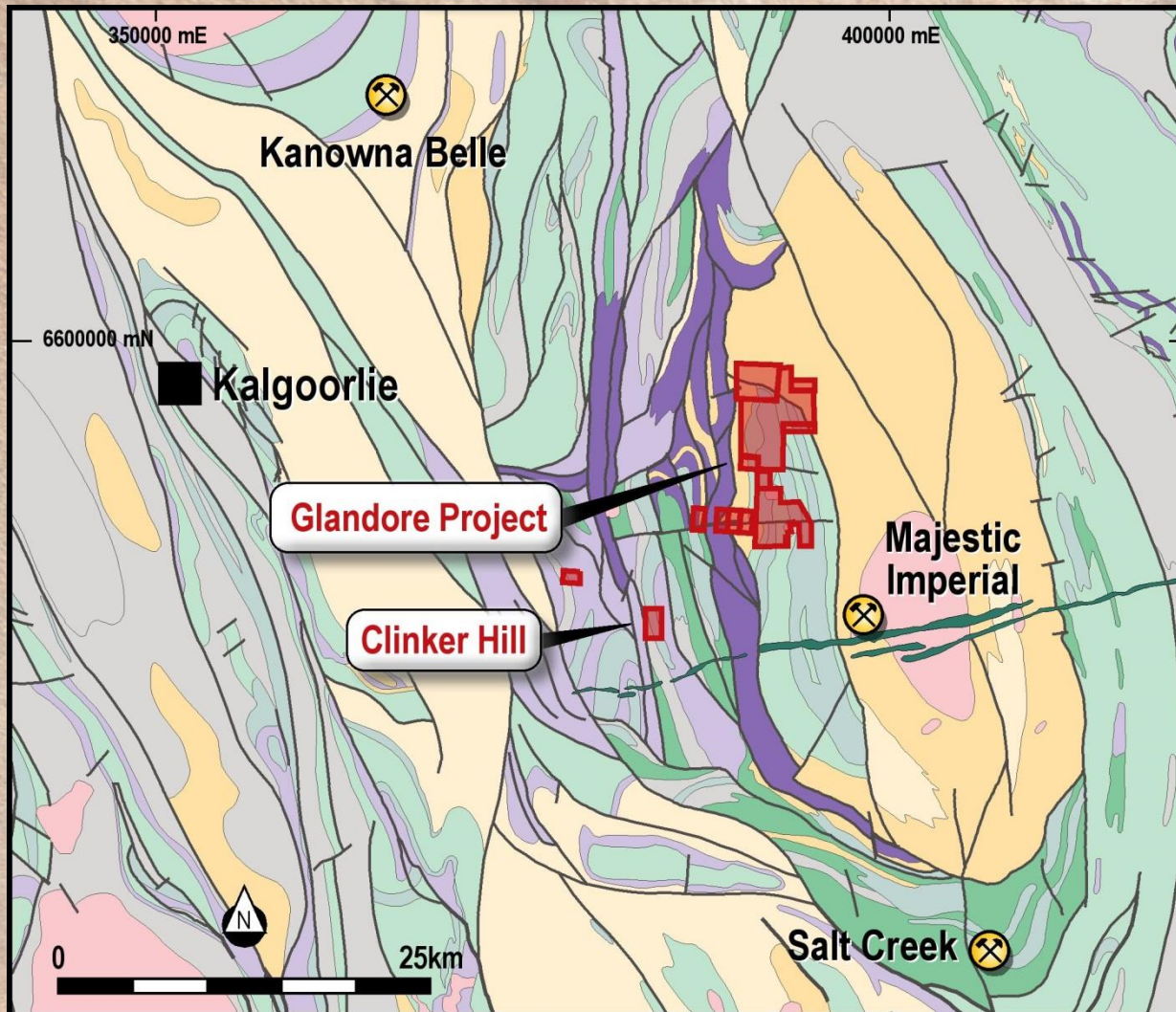


- Madison Trend – BULLOO PROJECT

EXPLORATION AND DEVELOPMENT

- 4m at 2.2% Cu in first pass drilling program (May)
- All drill lines hit copper anomalism (May)
- HyMap alteration over 60km being sampled (May)
- New Zones being mapped and sampled (June)
- Heritage survey booked for coming month (June)
- HoistEM (June)
- Follow up drilling planned (July-August)

GLANDORE GOLD PROJECT



Leases 40km east of Kalgoorlie

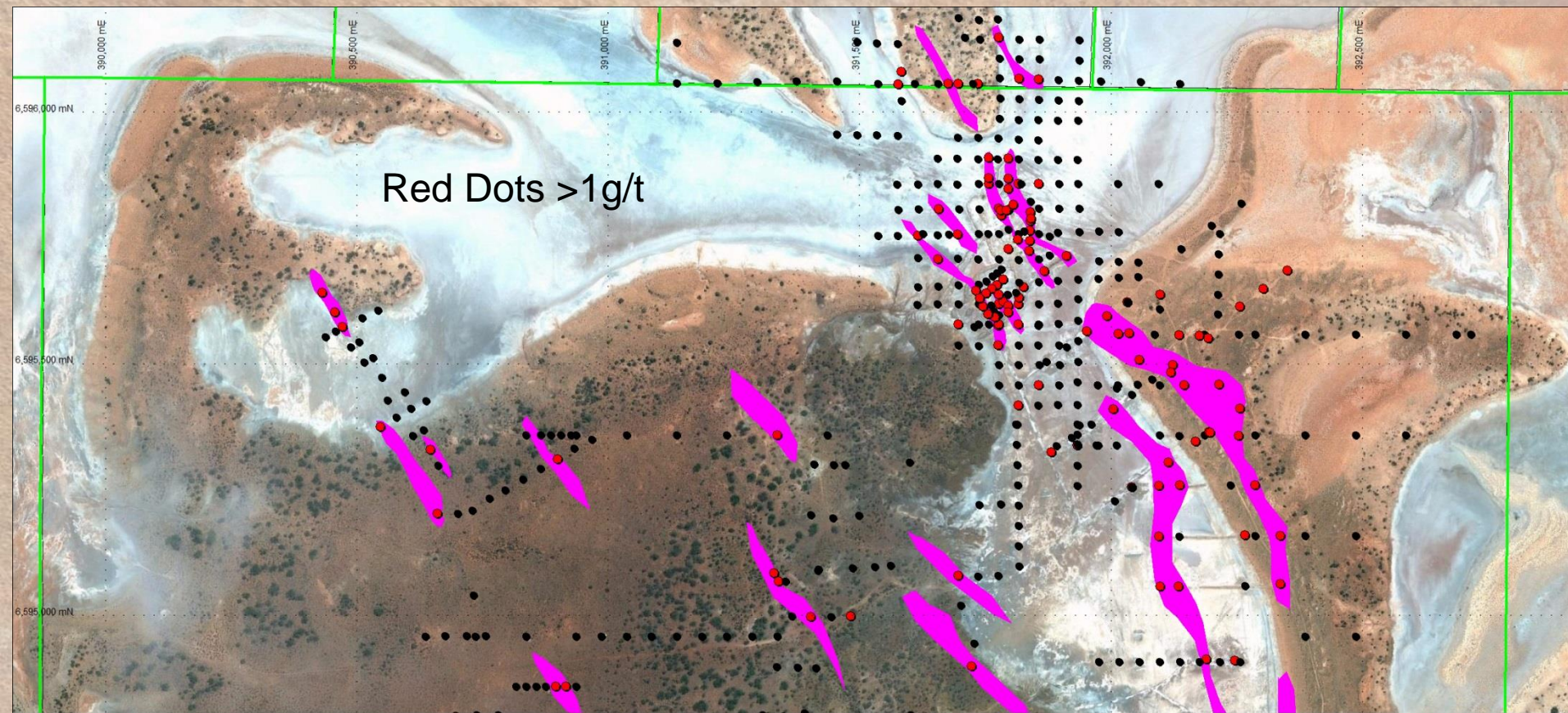
PROVEN GOLD PROVINCE

Kalgoorlie ~50M ozs
Kanowna Belle ~6M ozs
Salt Creek-Majestic ~1M ozs
Jundee ~7M ozs

	Intersections	Grade	From
GLANDORE	10m	10.27 g/t Au	58m
	8m	10.4 g/t Au	18m
	9m	4.22g/t Au	13m
	5m	4.3g/t Au	60m
JUNDEE	4m	15.37/t Au	7m
	6m	3.44g/t Au	18m
	4m	4.84g/t Au	21m

GRADE AND THICKNESS = POWERFUL SYSTEMS

GLANDORE DRILLING TARGETS



**STRONG DEFINED SYSTEMS
MINERALISATION IN MAGENTA >1G/T**

INVESTMENT SUMMARY



- **Actively exploring/drilling robust projects.**
- **Short time frame for discoveries.**
- **Opportunity for commercial discoveries.**
- **Adequately funded with \$2.8M cash.**
- **150M shares on issue.**