

OceanaGold

Didipio Mine Analyst Visit

March, 2014

Innovation
Performance
Growth

Cautionary Notes

Cautionary Notes - Information Purposes Only

The information contained in this presentation is provided by OceanaGold Corporation (“OGC”) for informational purposes only and does not constitute an offer to issue or arrange to issue, or the solicitation of an offer to issue, securities of OGC or other financial products. The information contained herein is not investment or financial product advice and has been prepared without taking into account the investment objectives, financial situation or particular needs of any particular person. The views, opinions and advice provided in this presentation reflect those of the individual presenters only. No representation or warranty, express or implied, is made as to the fairness, accuracy, completeness or correctness of the information, opinions and conclusion contained in this presentation. To the maximum extent permitted by law, none of OGC or any of its directors, officers, employees or agents accepts any liability, including, without limitation, any liability arising out of fault or negligence, for any loss arising from the use of the information contained in this presentation. Furthermore, this presentation does not constitute an offer of shares for sale in the United States or to any person that is, or is acting for the account or benefit of, any U.S. person (as defined in Regulation S under the United States Securities Act of 1933, as amended (the “Securities Act”)) (“U.S. Person”), or in any other jurisdiction in which such an offer would be illegal. OGC’s shares have not been and will not be registered under the Securities Act.

Forward-looking Information or Statements: This presentation contains “forward-looking information” or “forward-looking statements”, which may include, but is not limited to, statements with respect to the future financial and operating performance of OGC and its subsidiaries, its mining projects, the future price of commodities, the growth prospects of OGC and its subsidiaries, the estimation of mineral reserves and mineral resources, the realization of mineral reserve and resource estimates, costs of production, estimates of initial capital, sustaining capital, operating and exploration expenditures, costs and timing of the development of new deposits, costs and timing of the development of new mines, costs and timing of future exploration, requirements for additional capital, governmental regulation of mining operations and exploration operations, timing and receipt of approvals, consents and permits under applicable mineral legislation, environmental risks, title disputes or claims, limitations of insurance coverage and the timing and possible outcome of pending litigation and regulatory matters. Often, but not always, forward-looking statements and information can be identified by the use of words such as “plans”, “expects”, “is expected”, “predicts”, “budget”, “scheduled”, “estimates”, “forecasts”, “intends”, “targets”, “aims”, “anticipates” or “believes” or variations (including negative variations) of such words and phrases, or may be identified by statements to the effect that certain actions, events or results “may”, “could”, “would”, “should”, “might” or “will” be taken, occur or be achieved. Forward-looking information or statements contain information that is based on assumptions, forecasts of future results, estimates of amounts not yet determinable, and therefore involve known and unknown risks, uncertainties and other factors which may cause the actual results, performance or achievements of OGC and/or its affiliated companies to be materially different from any future results, performance or achievements expressed or implied by the forward-looking information or statements. Accordingly, there is no assurance that forward-looking information or statements will prove to be accurate, as actual results and future events could differ materially from those anticipated in such statements. OGC cautions that no undue reliance should be placed on forward-looking information or statements due to the inherent uncertainty therein. Please refer to OGC’s current annual information form filed with Canadian securities regulators on sedar.com for further details of risk factors. Forward-looking information or statements contained herein are made as of the date of this presentation and OGC disclaims any obligation to update any forward-looking statements, whether as a result of new information, future events or results or otherwise, except as may be required under applicable securities laws.

Cautionary Notes regarding Technical Information

Standards: This presentation includes disclosure of scientific and technical information, as well as information in relation to the calculation of reserves and resources, with respect to OGC’s mineral projects. OGC’s disclosure of mineral reserve and mineral resource information is governed by National Instrument 43-101 – Standards of Disclosure for Mineral Projects (“NI 43-101”) under the guidelines set out in the Canadian Institute of Mining, Metallurgy and Petroleum (the “CIM”) Standards on Mineral Resources and Mineral Reserves, adopted by the CIM Council, as may be amended from time to time by the CIM (“CIM Standards”). The disclosure of mineral reserve and mineral resource information relating to OGC’s properties is based on the reporting requirements of the 2012 Edition of the “Australasian Code for Reporting of Exploration Results, Mineral Resources and Ore Reserves” (“JORC Code”). CIM definitions of the terms “mineral reserve”, “proven mineral reserve”, “probable mineral reserve”, “mineral resource”, “measured mineral resource”, “indicated mineral resource” and “inferred mineral resource”, are substantially similar to the JORC Code corresponding definitions of the terms “ore reserve”, “proved ore reserve”, “probable ore reserve”, “mineral resource”, “measured mineral resource”, “indicated mineral resource” and “inferred mineral resource”, respectively. Estimates of mineral resources and mineral reserves prepared in accordance with the JORC Code would not be materially different if prepared in accordance with the CIM definitions applicable under NI 43-101. There can be no assurance that those portions of mineral resources that are not mineral reserves will ultimately be converted into mineral reserves. Mineral resources are not mineral reserves and do not have demonstrated economic viability. This presentation uses the terms “measured”, “indicated” and “inferred” resources. U.S. persons are advised that while such terms are recognized and required by Canadian regulations, the Securities and Exchange Commission does not recognize them. “Inferred Resources” have a great amount of uncertainty as to their existence and as to their economic and legal feasibility. It cannot be assumed that all or any part of inferred resources will ever be upgraded to a higher category. Under Canadian rules, estimates of inferred resources may not form the basis of feasibility or other economic studies. U.S. persons are cautioned not to assume that all or any part of measured or indicated resources will ever be converted into reserves. U.S. persons are also cautioned not to assume that all or any part of an inferred mineral resource exists, or is economically or legally mineable.

Qualified Persons: The Mineral Resources for Didipio were prepared by, or under the supervision of, J. G. Moore. The Mineral Reserves for Didipio were prepared under the supervision of R. Corbett. C. Bautista is Exploration Manager for the Philippines. J. G. Moore is a Member and Chartered professional with the Australasian Institute of Mining and Metallurgy and is a “qualified person” for the purposes of NI 43-101. R. Corbett is a Registered Professional Engineer (Ontario) and is a “qualified person” for the purposes of NI 43-101. C. Bautista is a member of the AIG and is a “qualified person” for the purposes of NI 43-101. Messrs Moore, Corbett, and Bautista have sufficient experience, which is relevant to the style of mineralisation and type of deposits under consideration, and to the activities which they are undertaking, to qualify as Competent Persons as defined in the JORC Code. J. G. Moore, R. Corbett and C. Bautista are full-time employees of OceanaGold, and they consent to the inclusion in this report of the matters based on their information in the form and context in which the information appears.

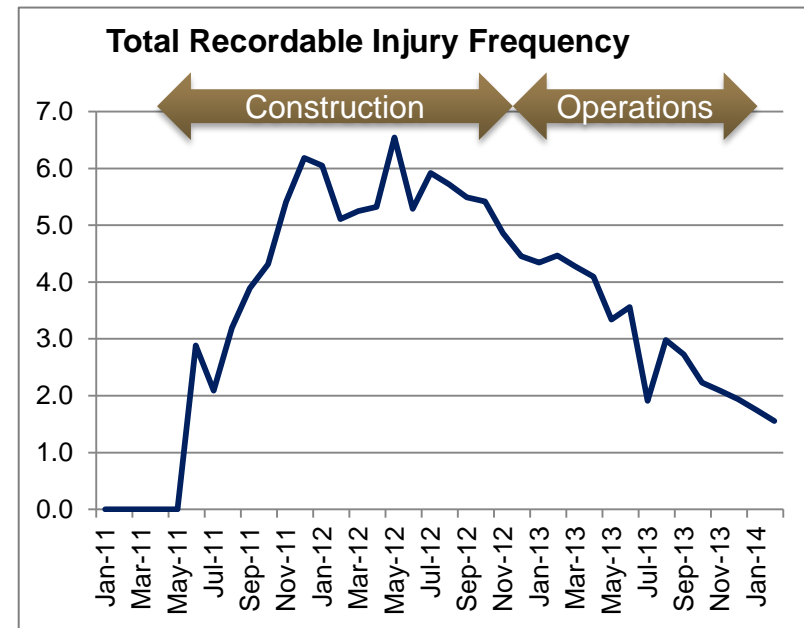
Technical Report: For further scientific and technical information (including disclosure regarding mineral resources and mineral reserves) relating to the Didipio Project please refer to the NI 43-101 compliant technical reports available at sedar.com under the Company’s name. Each of the authors of the Technical Report is a “qualified person” for the purposes of NI 43-101.

Safety Performance

Outstanding Safety Performance in Last 21 months

Safety

- No Lost time incidents since July 2012
- 12 month moving average TRIFR=1.6
- 5 months since last medical treatment injury
- 10 million manhours worked without a lost time injury.
- Established Didipio Academy – a TESDA accredited training institution for equipment operators
- Increased focus on High Hazard Activities



2013 Production

Producing to Expectations

Total Ore Mined 8.8 MT
 Waste Mined 14.4 MT
 Ore Au Grade 0.58 g/t Au,
 Ore Cu Grade 0.58% Cu

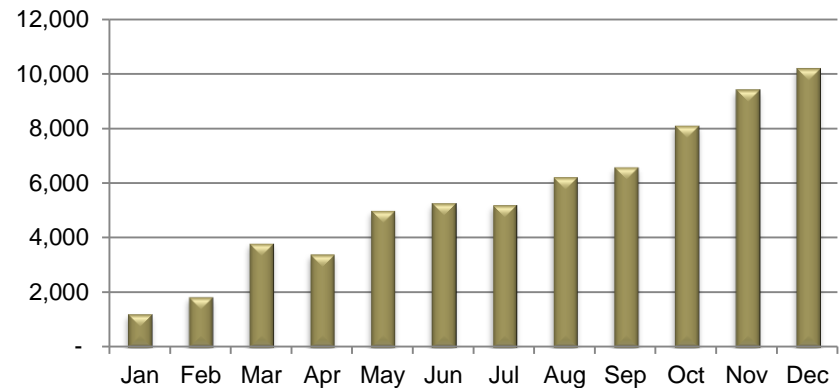
Mill Feed 2.58 Mt
 Au Grade 0.94 g/t
 Cu Grade 0.98%

Au Recovery 83.0%
 Cu Recovery 91.5%

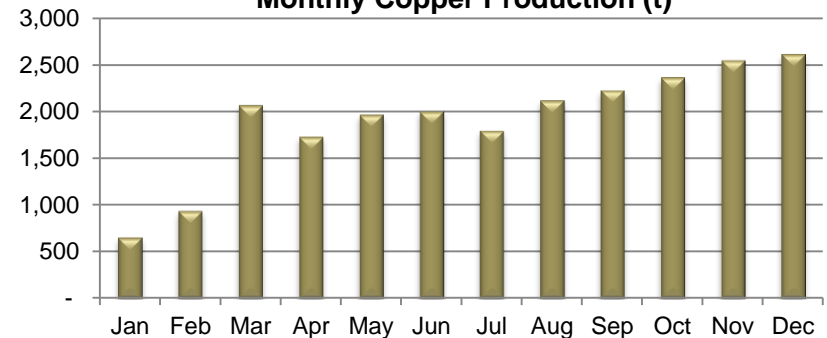
66,277 ounces of gold
 23,059 tonnes of copper

Cash Cost (\$1,078/oz)
 All in Sustaining Costs (\$688/oz)

Monthly Gold Production (oz)



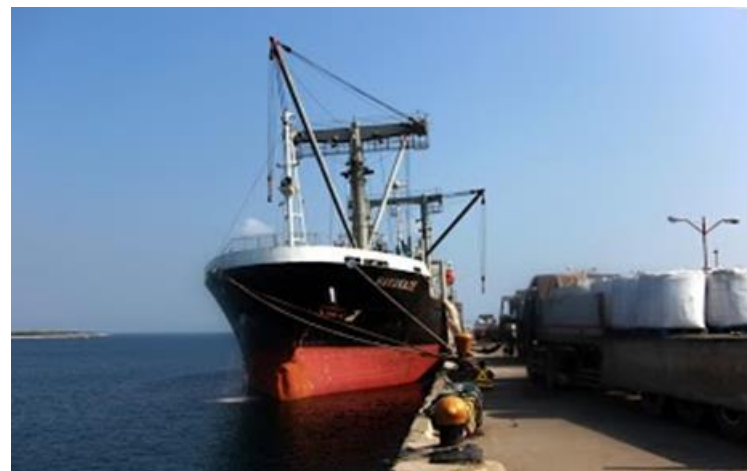
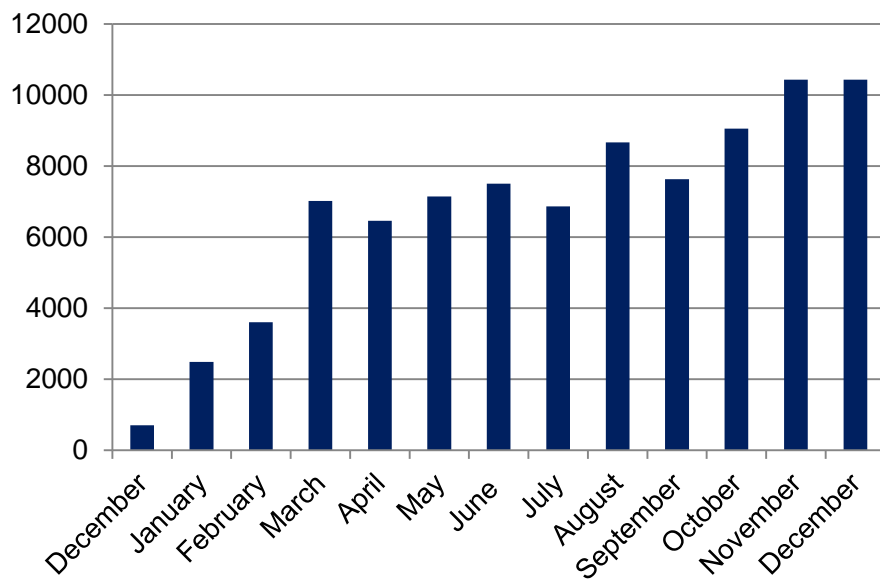
Monthly Copper Production (t)



Didipio Concentrate Production Profile

Solid operation in 2013 since commissioning

Concentrate Production, (DMT)



- 17 shipments to date of 5,000-10,000 tonnes each to Korea, Japan, and Indonesian smelters
- Gold grade in concentrate increasing, copper grade 26 – 28%
- Transportation logistics from mine site to port continued improvement with use of OGPI concentrate trucking fleet.

Mining Operations

Contractor Performing Well and Steady Production Achieved

- Mining is carried out by Delta Earthmoving
- Explosives manufactured and supplied to hole by Orica
- Some Staff Seconded to Delta to Improve Safety, Training and Maintenance Performance
- Monthly Ore and Waste Movement 2.0-2.2 million tonnes
- Mining Cost: \$2.40-\$2.50/tonne
- Current Stockpiles
 - ROM and HG – 0.8Mt
 - Medium and Low Grade 7.15Mt
- Focus on Cost Reduction in 2014

Current Mining Operations

Actively Mining Benches on Stages 2,3, and 4



	Design Strip Ratio	Total Tonnes	Au Oz	Cu kt	Remaining Tonnes	Completion
Stage 2	1.71	4.9	183,802	51.9	0.3	Mar 2014
Stage 3	1.95	17.9	204,144	37.8	12.2	Jul 2015
Stage 4	2.49	41.6	375,904	58.0	40.7	Mar 2017

Processing

Ramp-up to 3.5 mtpa continues

Au Feed Grade: 1.3-1.4 g/t

Cu Feed Grade: 0.7-0.9%

Overall Gold Recoveries 88-90%

Copper Recovery: 93-95%

Mill Utilization: 91-92%

Gravity Gold Recovery 19-22%

Concentrate Grade: 25-27% Cu, 27-30 g/t Au, 80-90g/t Ag

Processing Cost \$9.50-\$10.00/tonne milled

Concentrate Transport, and Smelting \$350-450/DMT of concentrate

Concentrate Transport

Clearing Concentrate Inventory from Late 2013

- Benchmark TC/RCs
- Trucking Cost to Port \$50-60 per tonne of concentrate with approximately half transported by contractors until stockpile is drawn down at end of March.
- No security problems encountered with concentrate transport

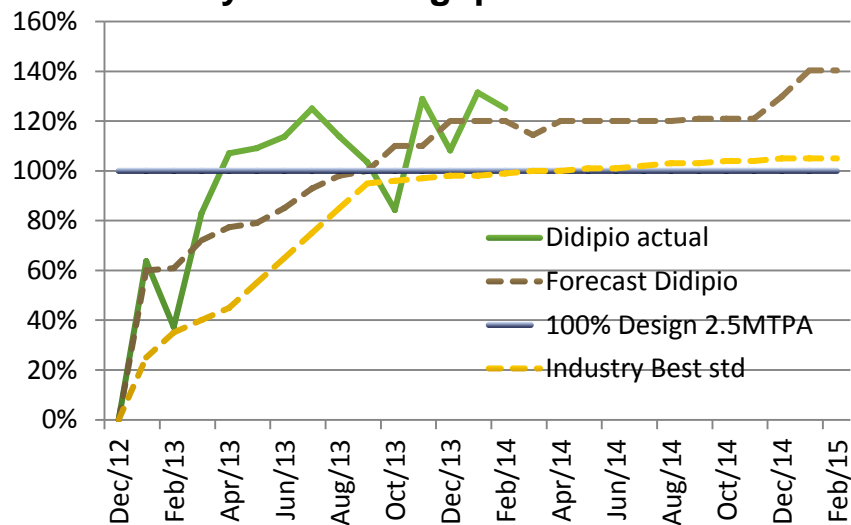


3.5 Mtpa RAMP-UP

3 mtpa achieved – Ramp-up to 3.5 mtpa rate by end of 2014

Safety	Status	Completion
Installation of Cone Crusher into SAG Circuit	Design	Q4
New Trash Screen	Procurement	Q2
3 rd Stage Tailings Pump	Procurement	Q3
Water Treatment Plant	Construction	Q2
General Modifications	Design, Procurement, Construction	Q4

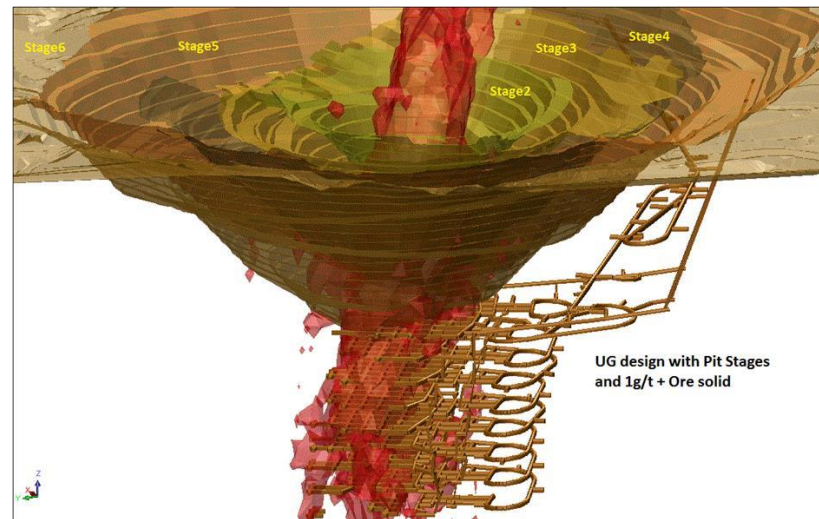
Monthly Mill Throughput



Other Projects and Studies

Opportunities to Reduce Costs Further and Optimize U/G Development

Safety	Status	Completion
Water Treatment Plant	Construction	Q2
Overhead Power Line	Design	2015
Core Shed	Construction	Q2
Mine Optimization Study	50% Complete	Q4
TSF Stage 2780 Lift and Flow Through Drain	Construction	Q3



2014 Capex

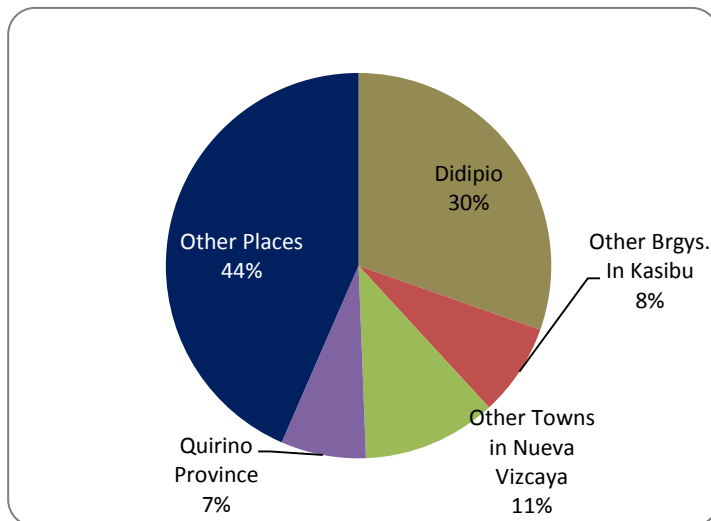
Capex Controlled

Capex Category	Amount
Sustaining Capital	\$10m to \$15m includes debottlenecking to 3.5 Mtpa
TSF Construction	\$5m to \$10m
Open Pit Pre-Strip	\$15m
Total 2014 Capex Budget	\$30 million to \$40 million

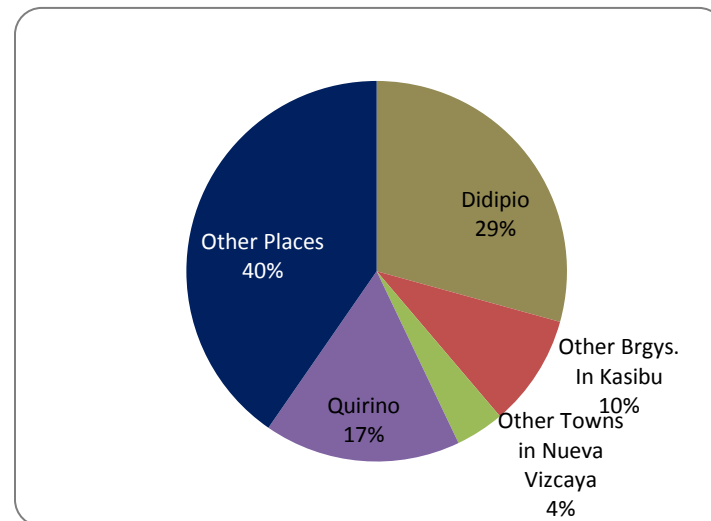
Local Employment

Meeting Community Employment Commitments

OGPI Employees



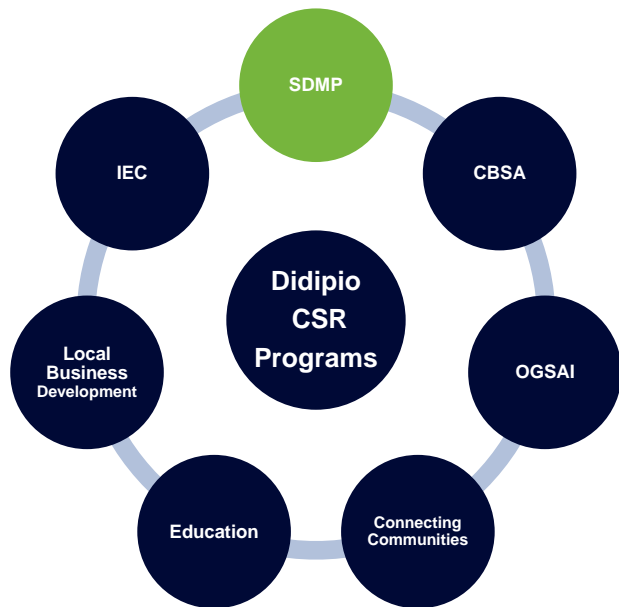
Long Term Contractors



- About 56% of employees from Nueva Vizcaya and Quirino
- Less than 1.5% are non-Filipino
- 565- employees and 1,400 contractors
- Timber plantations and SDMP projects supporting 300 additional families

SDMP

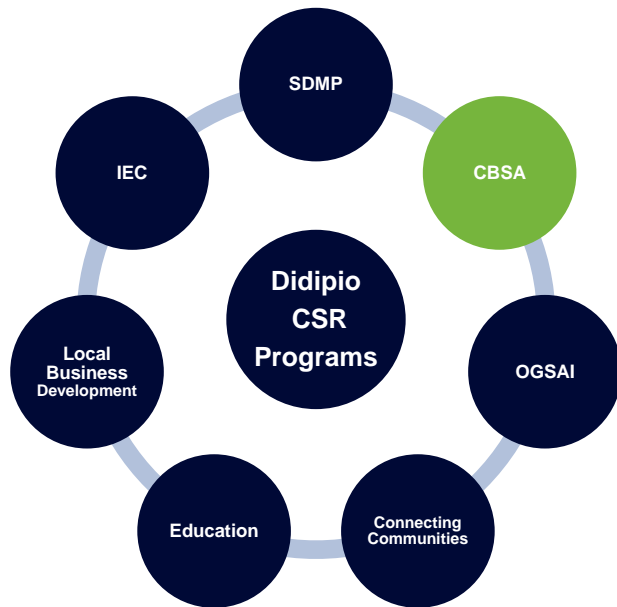
Touching thousands of lives in our neighbouring communities



Social Development & Management Program

- 1.125% of operating costs required
- Approximately \$1.6 million annually
- Shared between host barangay of Didipio (45%), 9 other barangays (5% each), and 2 municipalities (4% each)
- Program priorities are established by each barangay.

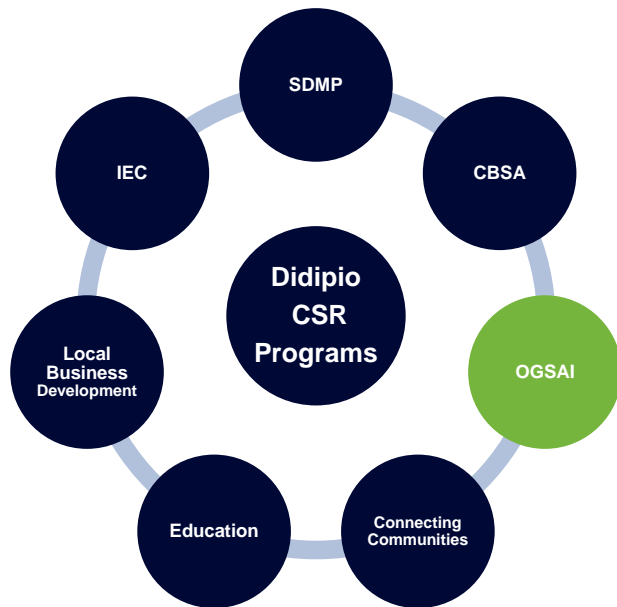
Building a showcase mining community in Didipio



Comprehensive Benefits Sharing Agreement

- Agreement signed with Didipio setting out the benefits that shall accrue to Barangay Didipio in exchange for their support for the project
- Priority in Employment
- Approximately \$4.7 million in infrastructure construction (roads, schools, sports complex, hospital)
- \$1-1.5 million per year
- Expression of support for project and exploration within the FTAA

Establishing a carbon-neutral mine operation by 2019

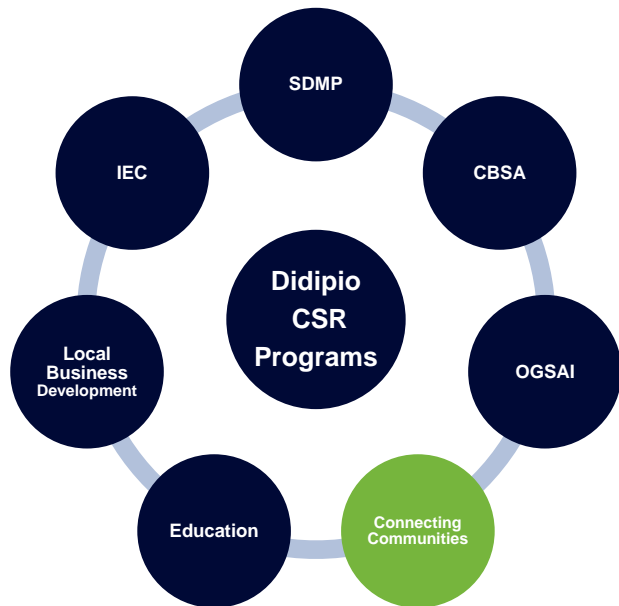


OceanaGold Sustainable Agroforestry Inc.

- Subsidiary company established as a profitable agroforestry business to partner with local farmers and landowners
- Commercial acacia mangium, gmelina, and mahogany plantations are established
- 189,000 seedlings planted in 2013
- Land lease payments and wages paid to landowners
- Harvesting on 10 year cycle and 10% of profits to landowner
- Expenditures of approximately \$1 million per year

Connecting Communities

Mining Enhances Agriculture in Local Communities



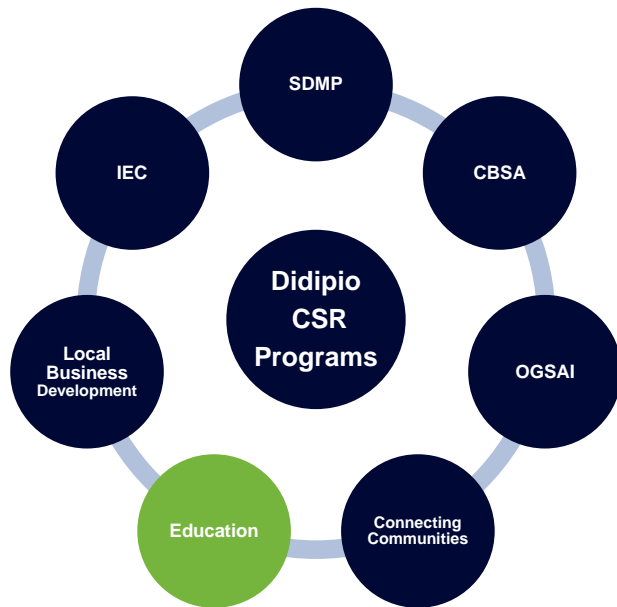
Connecting Communities

- Construction of roads in Kasibu and Quirino connecting communities and building farm to market roads
- Over 100 km of roads constructed or improved.
- Thousands of hectares of land made accessible for farming.
- Expenditures of approximately \$1.8 million per year



Education

Growing a skilled, and highly educated local workforce



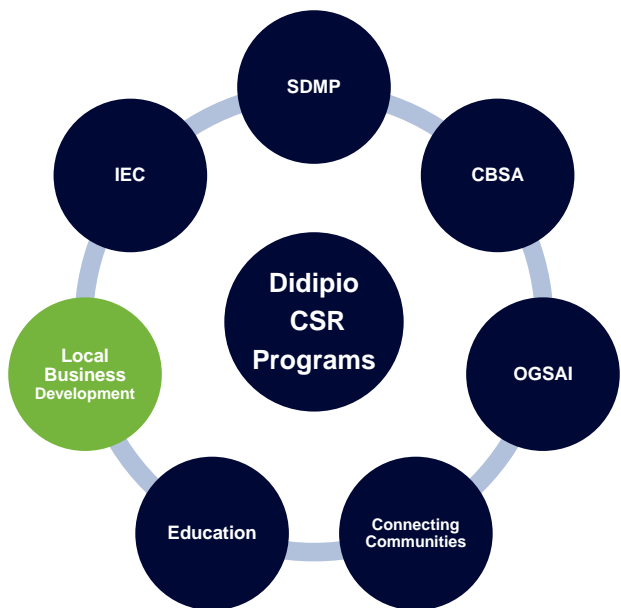
Education and Skills Training

- Pre-Employment Training
- Didipio Training Academy
- School Fees Assistance
- Scholarships
- Subsidizing Teacher Salaries
- Adopt-a-School (2014)




Local Business Development

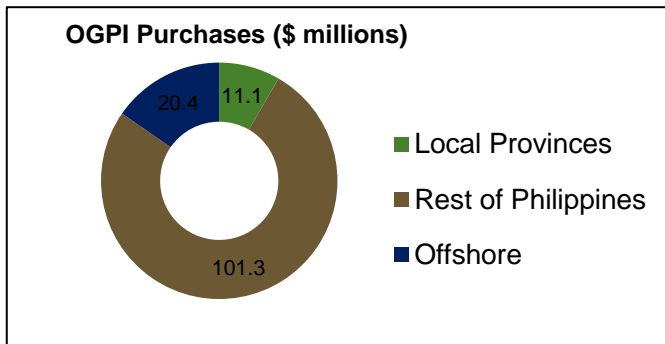
Supporting a Strong, Sustainable, Community Corporation and Small Enterprises



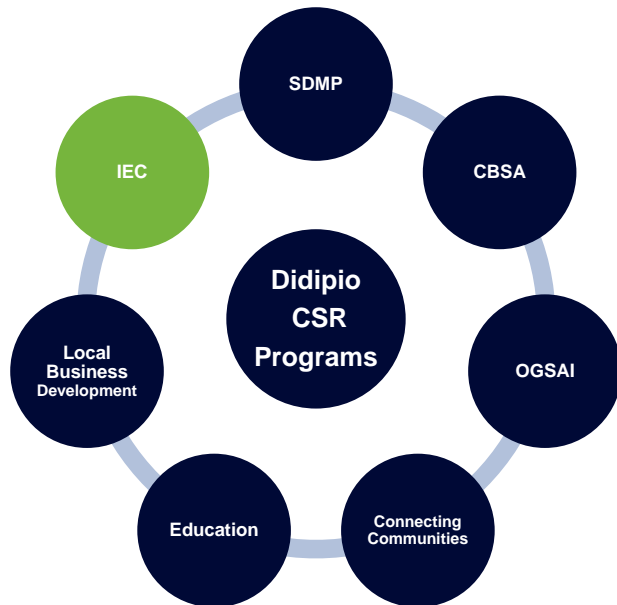
Local Business Development

- 
Didipio Community Development Corporation (DiCorp)
 - 300 employees;
 - Long term contracts worth \$40 million if renewed over life of mine;
 - Largest and fastest growing Nueva Vizcaya based company

-
- Buy Local Program
-
- Micro-Credit Program (2014)
-



Winning Hearts and Minds in Nueva Vizcaya and Quirino



Information, Education, Communication

- 0.225% of Operating Expenditures Required
- “Bimmoble” community newspaper in Ifugao language and Employee Newsletter
- Print media and radio advertising
- Quarterly update meetings with Provincial and Municipal Boards
- Mine Tour Program (300 people per month)
- Construction of Visitor Center scheduled for completion in May 2014
- Didipio Mine Website (2014)
- Conference and Event Sponsorship
- “Mining Matters” Mineral industry education program for primary and secondary schools developed by PDAC (2014)



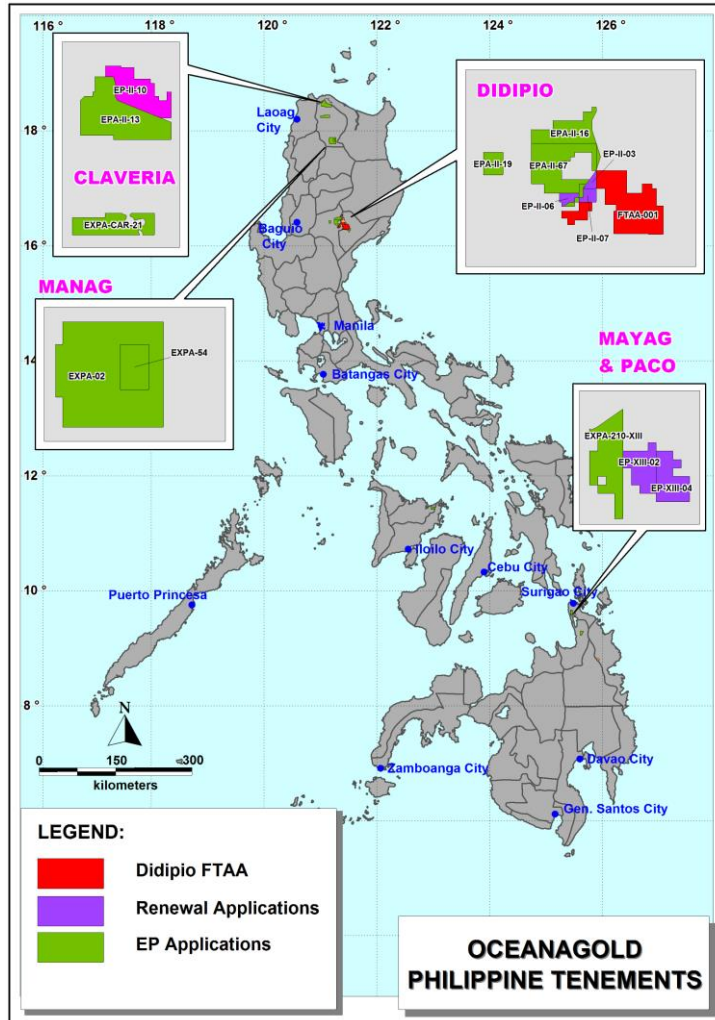
OCEANAGOLD

OceanaGold Exploration Presentation

March 20, 2014

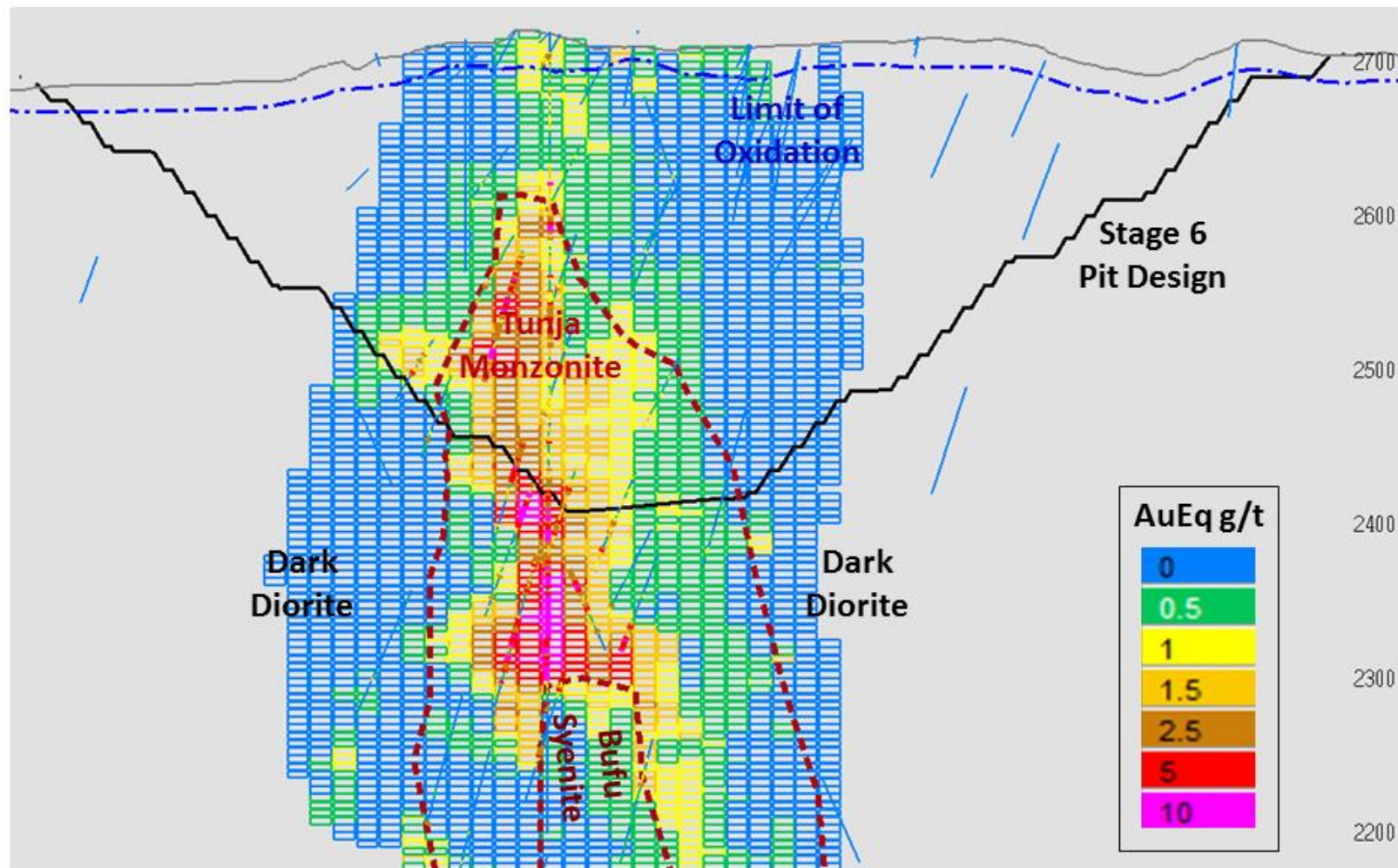
Innovation
Performance
Growth

OceanaGold's Philippine Tenements

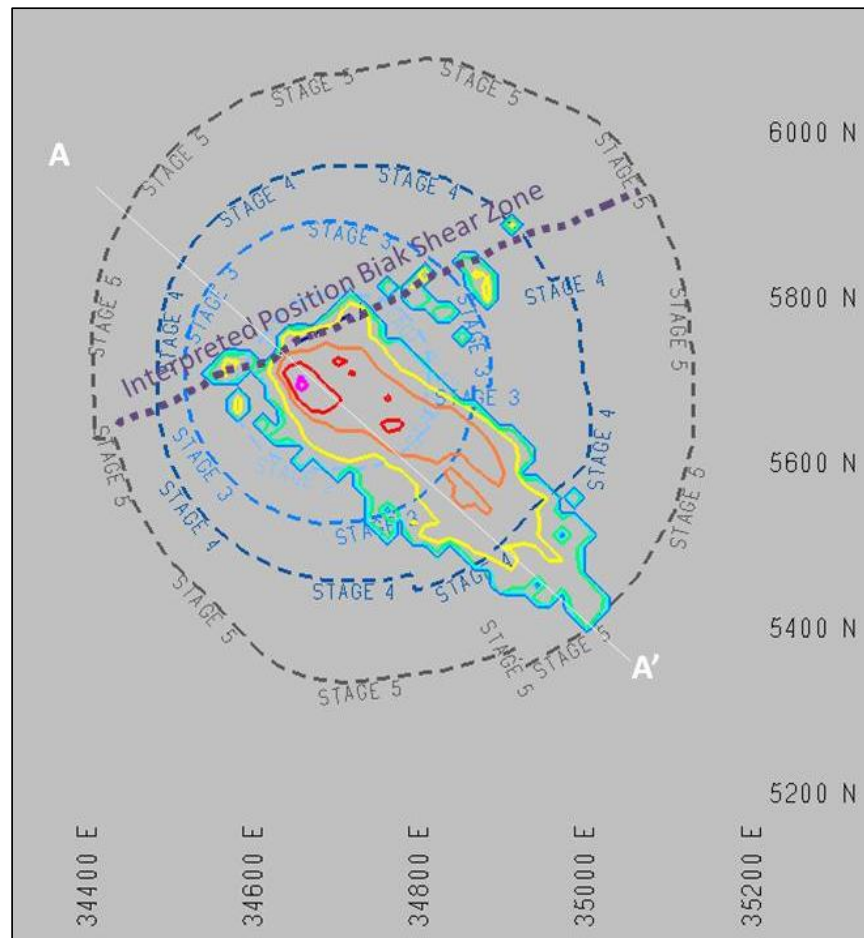


- Tenements in highly prospective volcanic arcs
- FTAA (1), EPs (6), EPAs (8) for a total area of 83,911 hectares
- Focus on Didipio FTAA, located in the NE alkalic porphyry-epithermal Au-Cu province
- Most of the tenements are waiting for government approvals
- 2014 Exploration Budget: ~2US\$M (unless permits are granted)

Didipio – Resource Geology



Didipio – Plan Grade Distribution

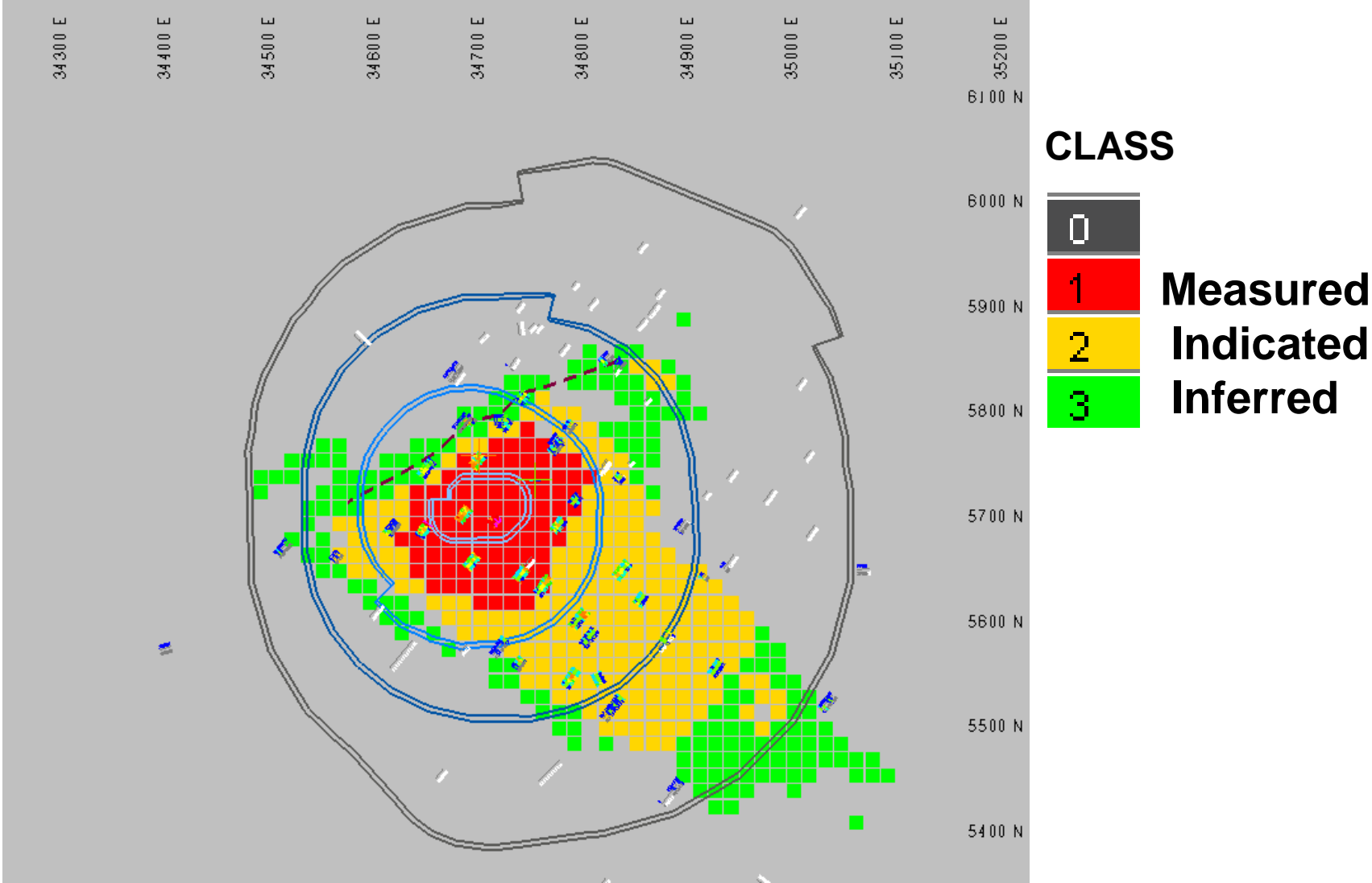


LEGEND

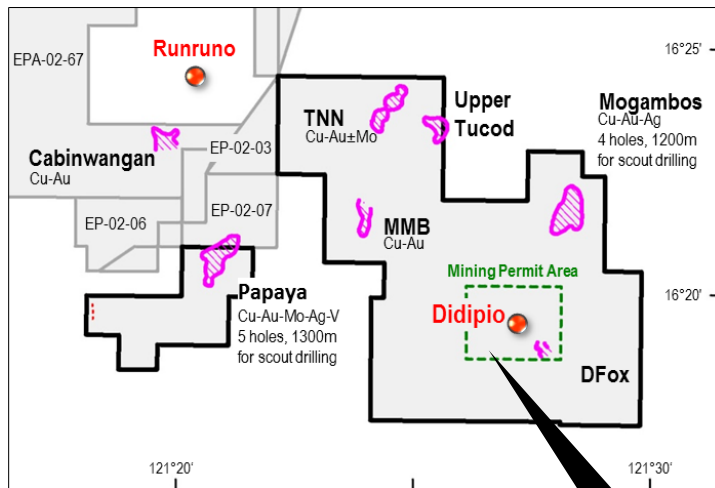
- Pit Stages: 2 to 5 dashed lines
- Biak Shear: heavy dotted line
- Resource Model Grade Contours;
 - > 0.1 g/t AuEq : blue
 - > 0.2 g/t AuEq : blue green
 - > 0.4 g/t AuEq : green
 - > 0.8 g/t AuEq : yellow
 - > 1.6 g/t AuEq : orange
 - > 3.2 g/t AuEq : red
 - > 6.4 g/t AuEq : magenta

Figure 1: Plan View Slice of Didipio Pit Stages and Resource Model Grade Contours

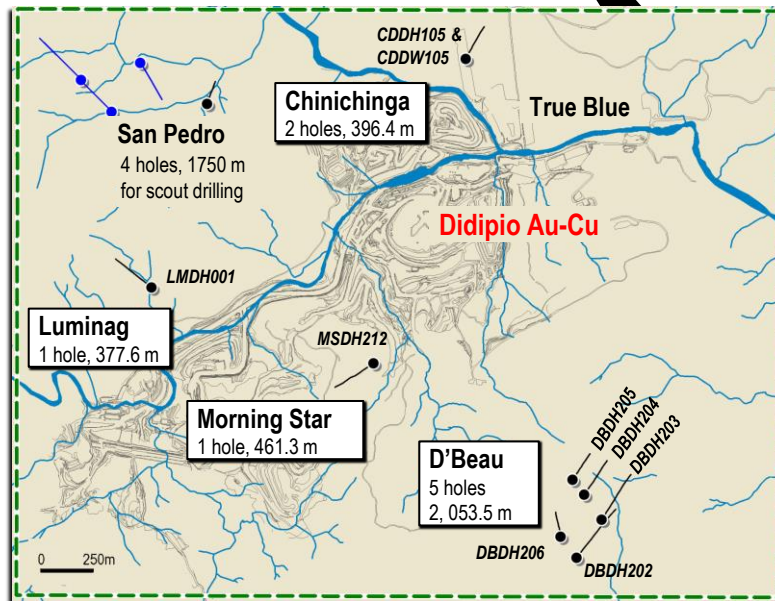
Didipio – Resource Classification



2013 Near-Mine Drilling



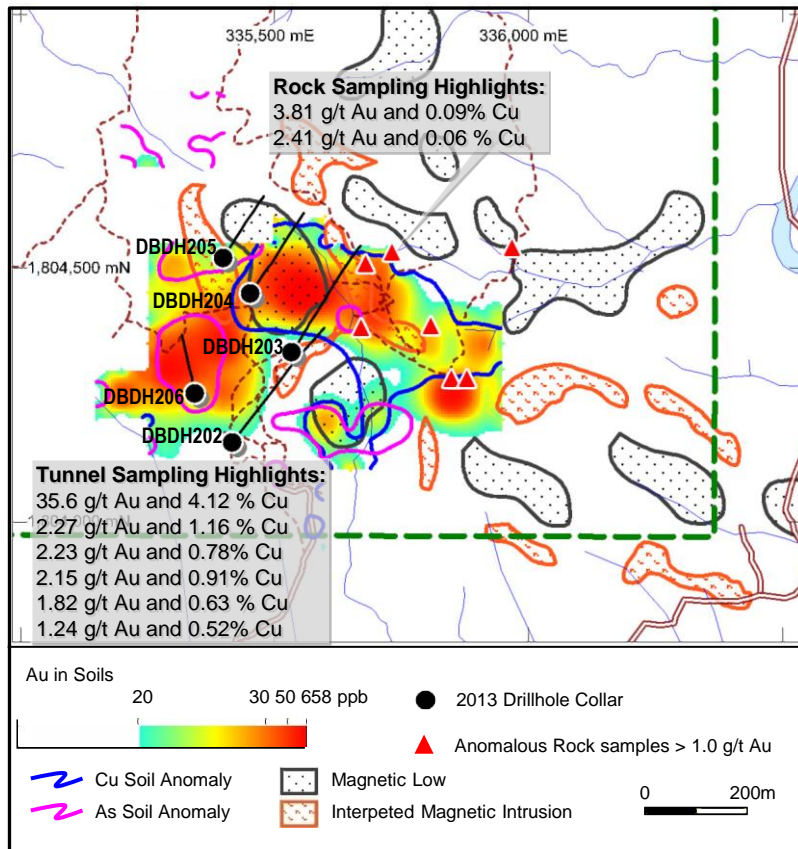
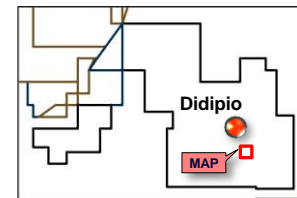
- Drilling constrained in the PDMF area of the FTAA
- Drilled a total of 3,261.9m of scout holes over four prospects in 2013
- Minor hits in the D'Beau prospect
- Currently drilling the San Pedro prospect



LEGEND

- Didipio FTAA-001
- Other OGC Tenements
- 2013 Drillhole Collar
- Proposed Drillhole Collar
- ▨ Au-Cu anomalies for drill testing

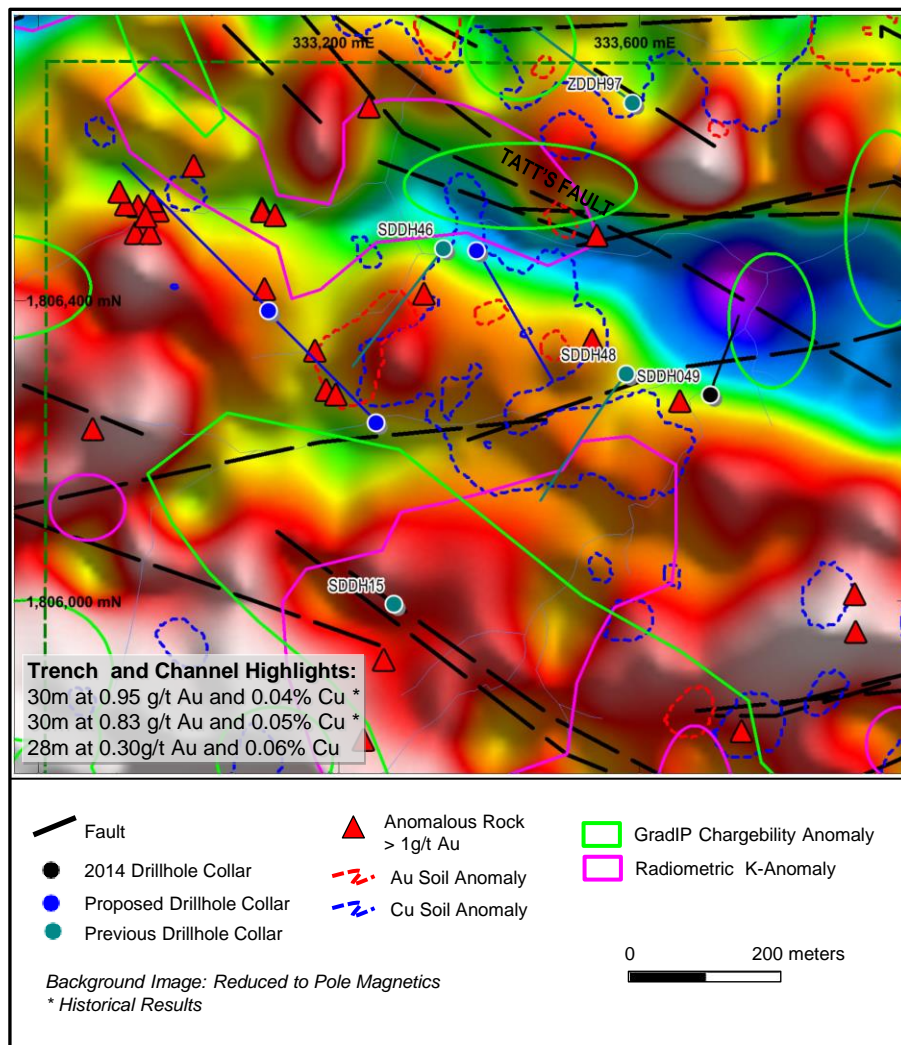
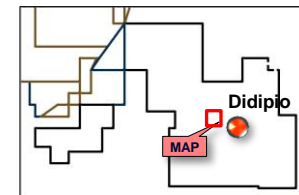
D'Beau Prospect



- Around 1km southeast of Didipio
- Completed five holes – 2,053.5m
- Best results at DBDH204 - 33.6m at 0.41 g/t Au and 0.22% Cu
- Mag low targets to the southeast remain untested

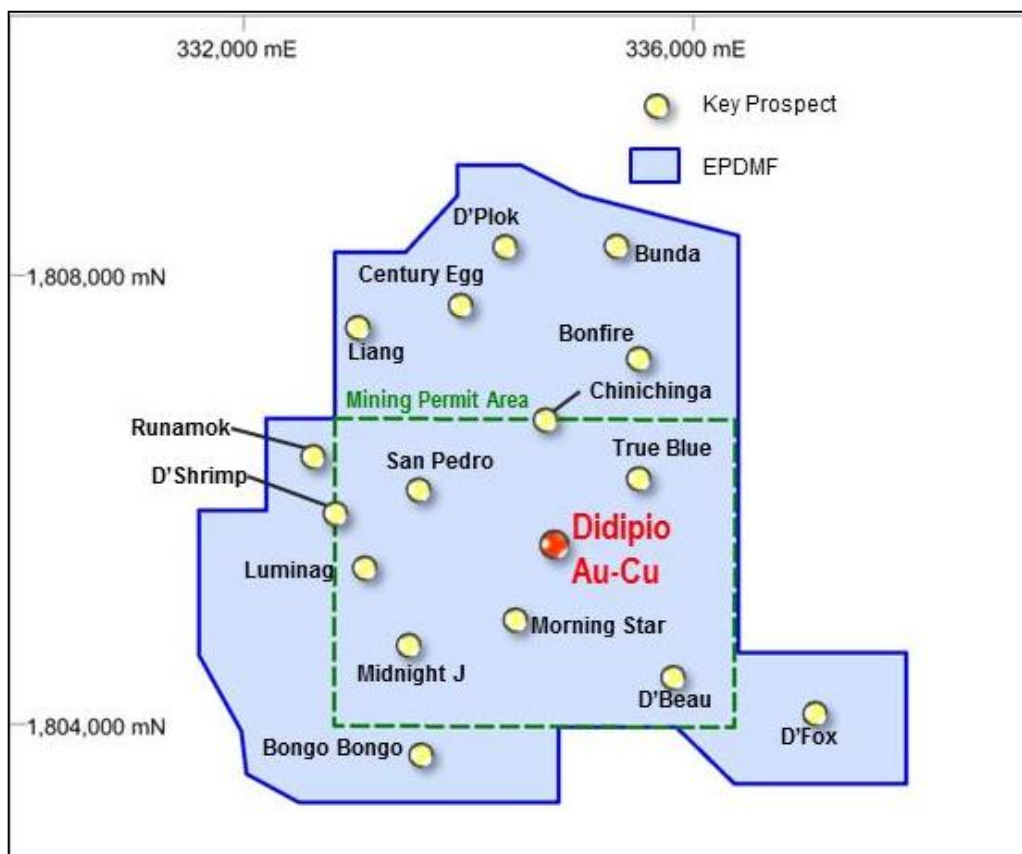
Drilling Highlights:						
HOLEID	FROM	TO	WIDTH (m)	GOLD (g/t)	COPPER (%)	AU EQ (g/t)
DBDH203	144	154	10	0.31	0.22	0.66
	164	168.8	4.8	0.24	0.21	0.58
	465	473	8	0.75	0.12	0.95
DBDH204	46	58.3	12.3	0.37	0.36	0.95
	63.1	96.7	33.6	0.41	0.22	0.77
	254.3	262	7.7	0.36	0.19	0.67

San Pedro Prospect



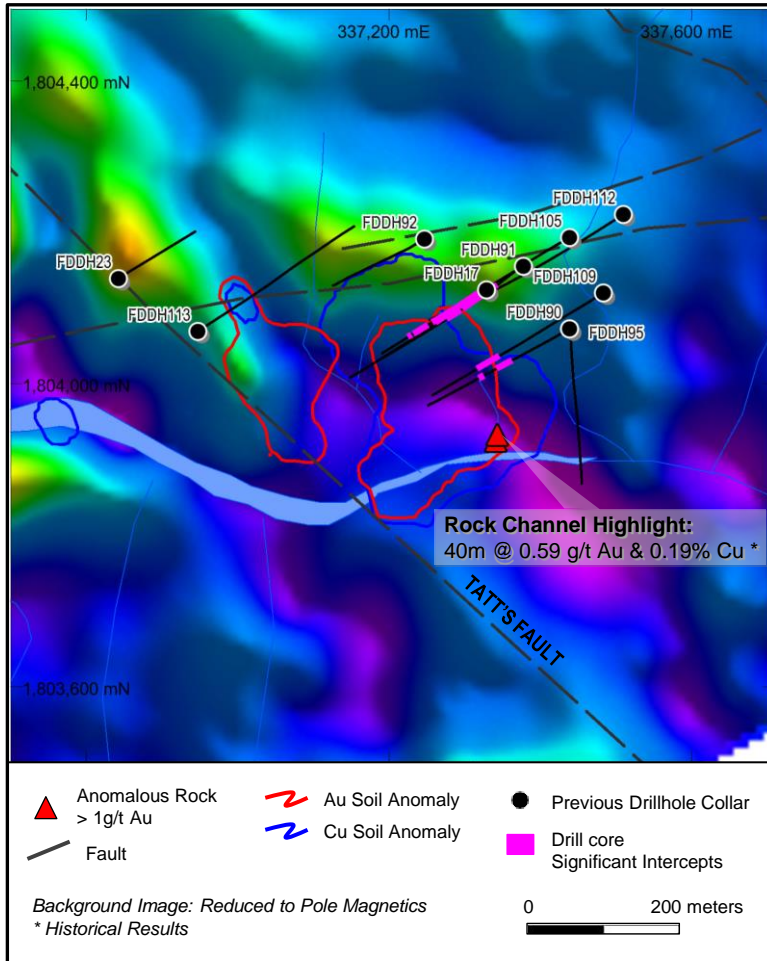
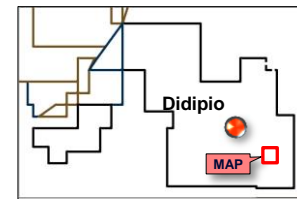
- 1.4km northwest of Didipio
- Area of extensive alluvial gold mining
- Underlying rocks exhibit stockworks with low to moderate gold grades
- Holes to test the stockworks, geochem anomalies, low mag, and IP chargeability zone.

Expanded PDMF



- Application for expansion of PDMF area being prepared
- This will provide exploration access to some prospects in the FTAA

D'Fox Prospect

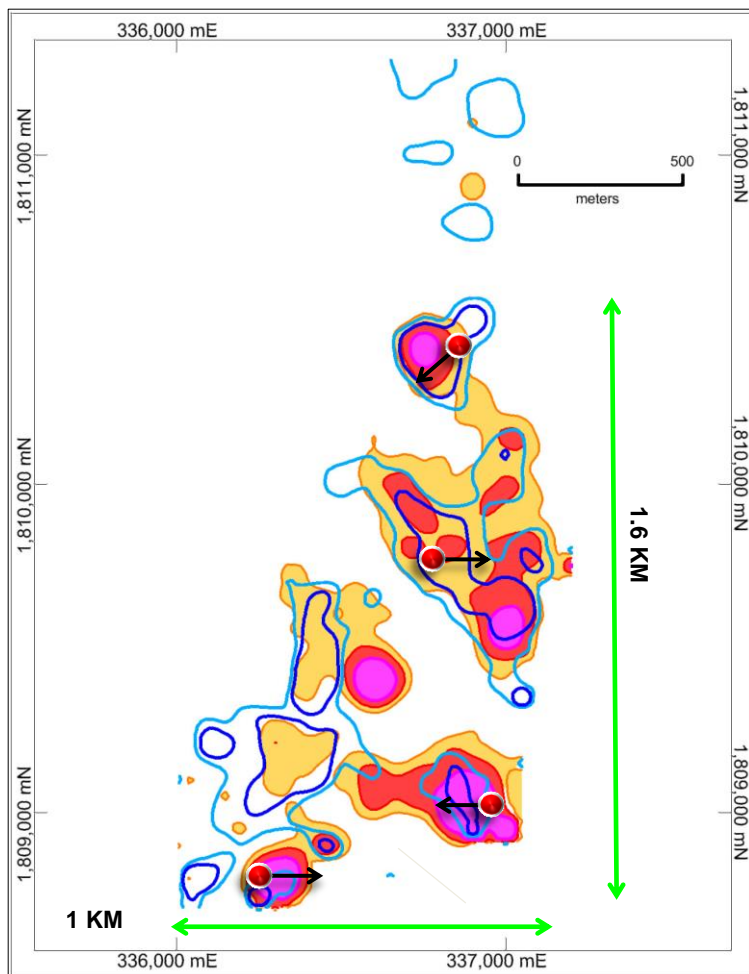
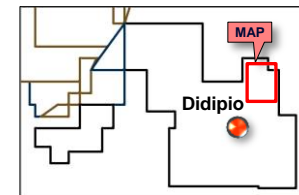


Drilling Highlights:

HOLEID	FROM	TO	WIDTH (m)	GOLD (g/t)	COPPER (%)
FDDH17	31	58	27	0.33	0.30
	67	120	53	0.31	0.21
	130	161	31	0.29	0.24
FDDH90	180	228	48	0.31	0.25
FDDH91	149	230	81	0.71	0.27
	239	302	63	0.67	0.24
FDDH105	244	349	105	0.66	0.34
	355	400	45	0.74	0.34
FDDH109	315	378	63	0.25	0.15

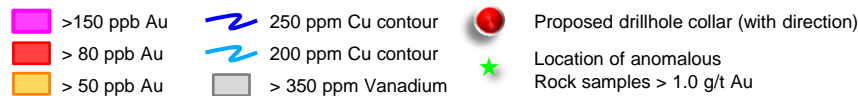
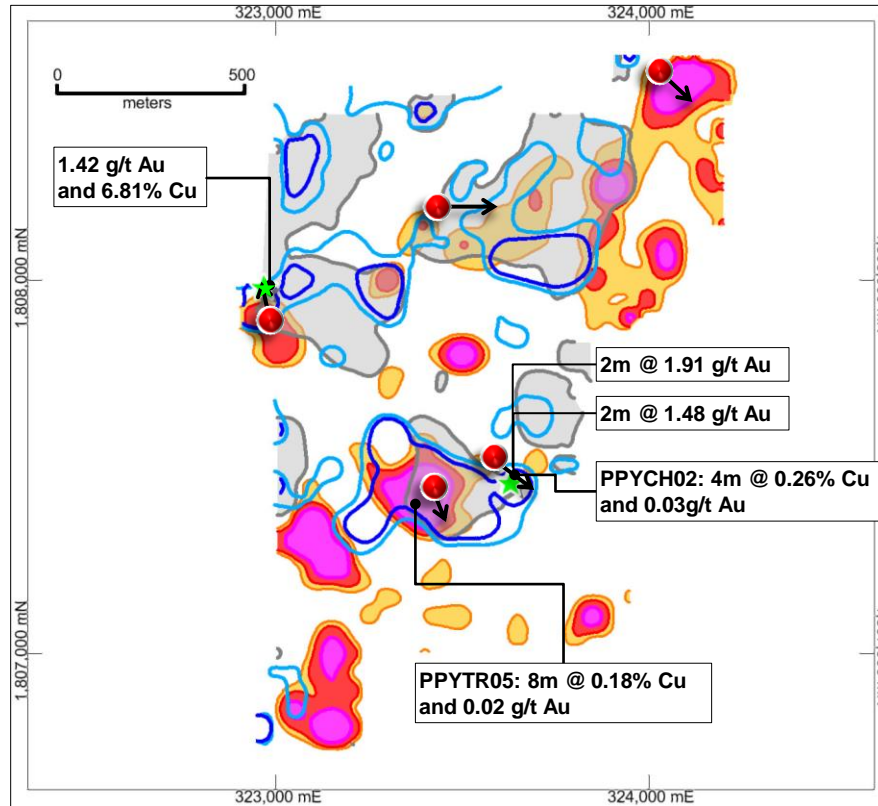
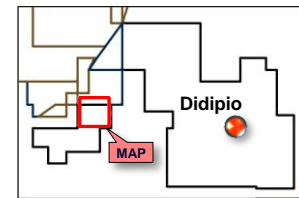
- Located 2.6km SE of Didipio
- 200m long by 100m wide Au-Cu mineralisation intersected by historical drilling
- More drilling can expand mineralisation (to southeast)

Mogambos Prospect



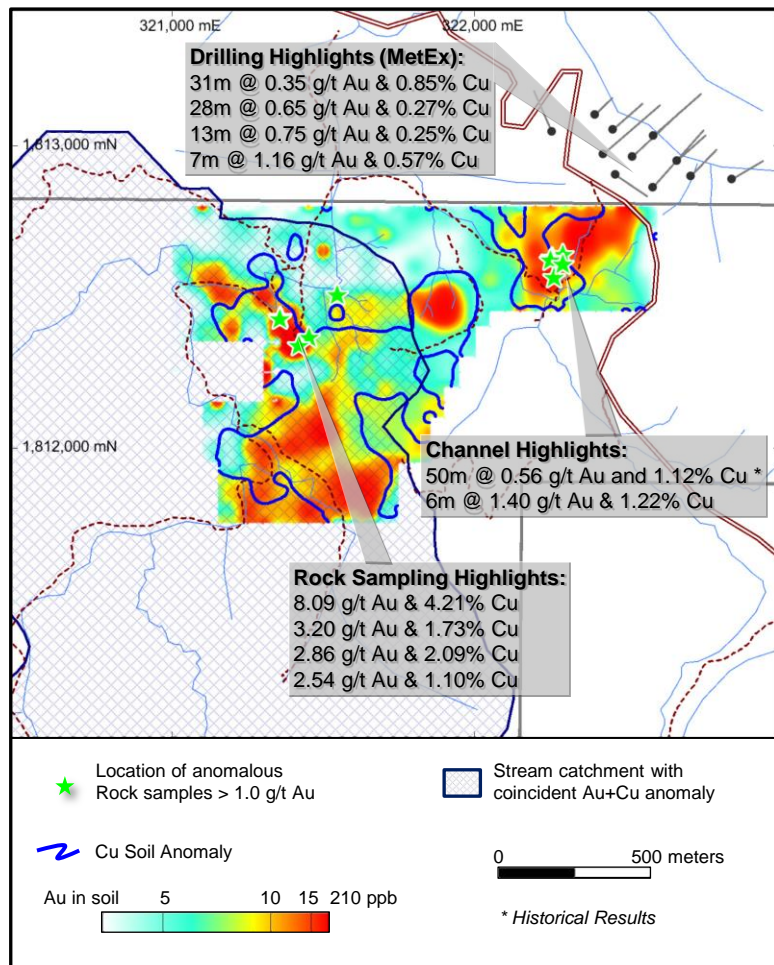
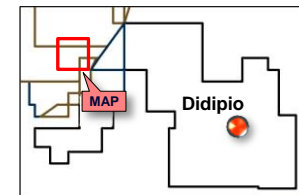
- 4km north of Didipio
- Coincident Au-Cu anomalies defined by soil sampling
- Main anomaly measures 1km by 200-400m wide
- Four holes to test geochemical anomalies

Papaya Prospect



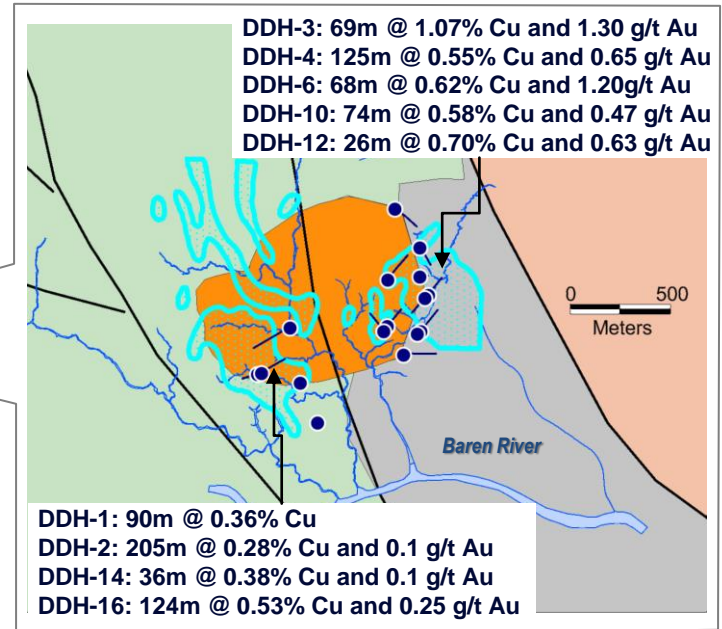
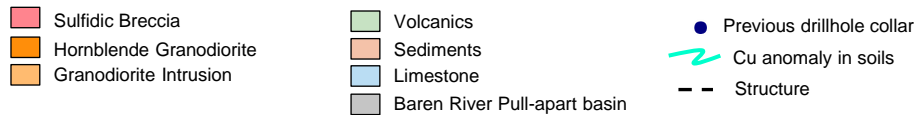
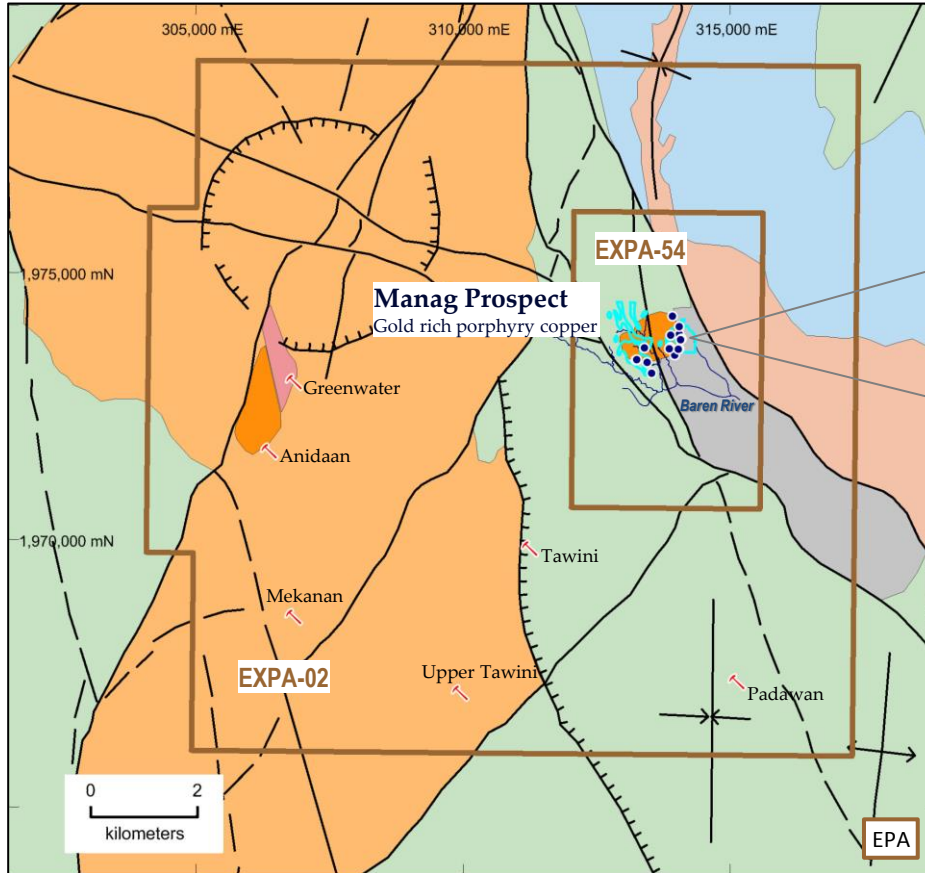
- 12km west of Didipio
- Grid soil sampling delineated NE-SW trending Au-Cu (\pm Pb-Zn-V) anomalies
- Anomaly coincides with sericite-clay alteration zone
- Rock samples range from anomalous to higher-grade Au/Cu values
- Scout drilling when FTAA exploration period extension is granted

Cabinwangan (EPA-II-67)



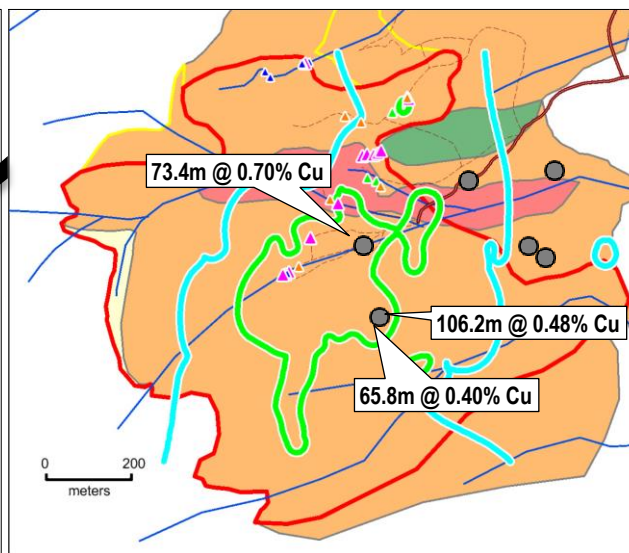
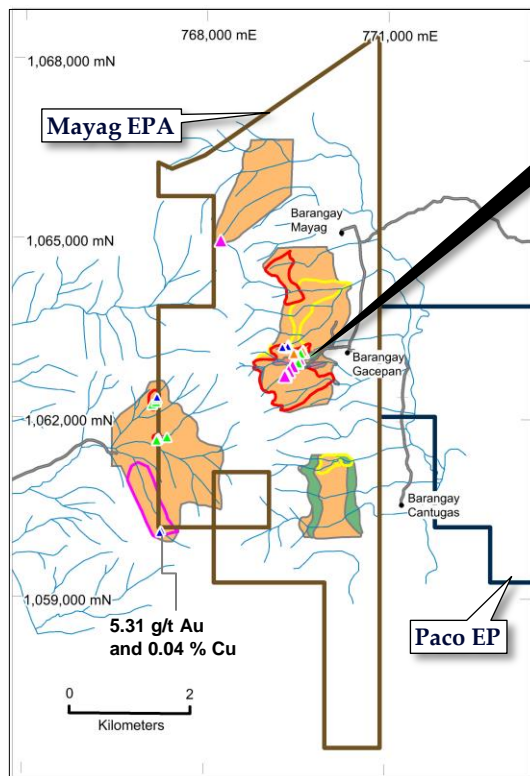
- Partly outcropping mineralised Cu-Au porphyry south of the Runruno Au-Mo deposit
- High grade Au and Cu results returned in rock chip sampling
- Drilling by Metals Ex identified porphyry Cu-Au mineralisation
- Aggressive exploration once EP application is granted

Manag EPA



- Historical drilling found high grade porphyry
- Non-JORC resource of 13.6Mt @ 0.54 g/t Au, 0.47%Cu
- More drilling when EPA is granted

Mayag EPA



LEGEND

Andesite	Au anomaly in soils (>50 ppb)
Diorite	Cu anomaly in soils (>500 ppm)
Feldspar Porphyry	2012 Rock sample (labeled for > 0.5 g/t Au)
Alteration	Rock Cu anomaly
Silica ± Clay ± Pyrite	> 0.5 % Cu
Sericite ± Quartz ± Pyrite	0.3 to 0.5 % Cu
Clay ± Sericite	0.1 to 0.3 % Cu
Previous drillhole collar	< 0.1 % Cu

- Potential for large porphyry Cu-Au deposit
- Previous drilling by Lepanto hit porphyry Cu mineralisation (Au not assayed)
- Drilling to commence once EP is granted



OCEANAGOLD

oceanagold.com

Innovation
Performance
Growth

