



**Strategic  
Minerals  
Corporation N.L.**

ACN 008 901 380  
ABN 35 008 901 380

58 Jersey Street  
Jolimont, Western Australia 6014

P.O. Box 66  
Floreat Forum WA 6014

Email: wally@stratmin.com.au  
Website: www.stratmin.com.au

Telephone (08) 9284 1255  
Facsimile (08) 9387 7331

**ASX Code: SMC**

**5 June 2014**

**ASX ANNOUNCEMENT**

**STRATEGIC MINERALS CORPORATION NL, 100%**

**WOOLGAR GOLD PROJECT, QUEENSLAND**

**2014 DRILLING PROGRAM TO COMMENCE SHORTLY**

The Company is pleased to advise that preparations are underway for the recommencement of drilling on the Woolgar project later this month.

**2014 DRILLING PROGRAM**

The first phase of drilling at Woolgar this year will concentrate on the Big Vein South (BVS) and Big Vein Central (BVC) prospects in the Lower Camp. It is planned to consist of approximately 3,000 metres of reverse circulation drilling to infill and extend around the significant intersections discovered during the previous drill program in late 2013, see . These included:<sup>1</sup>

**Big Vein South Prospect**

LR0185	50m at 4.09g/t gold from 156m, including 4m at 8.22g/t; and 4m at 10.33g/t.
LR0189	35m at 2.87g/t gold from 89m, including 9m at 6.75g/t.
LR0190	26m at 10.44g/t gold from 102m, including 1m at 219g/t.
LR0193	16m at 6.49g/t gold from 124m, including 10m at 9.03g/t.
LRD0203	49m at 4.39g/t gold from 165m, including 14m at 8.51g/t and 4m at 9.63g/t.
LR0231	32m at 4.79g/t gold from 168m, including 4m at 17.5g/t.
LD0234	15.4m at 4.44g/t gold from 19.5m, including 3.7m at 15.41g/t.
LD0235	21.4m at 8.74g/t gold from 54m, including 9.24m at 17.39g/t.

**Big Vein Central Prospect**

LR0209	28m at 4.35g/t gold from 94m, including 3m at 15.97g/t.
LR0219	4m at 2.35g/t gold from 38m, 10m at 5.74g/t gold from 55m and 35m at 1.15g/t gold from 92m.

Eight of the currently planned holes will be located in BVS and a further four in BVC.

<sup>1</sup> Summary results presented herein. For full JORC-compliant results refer to QUARTERLY ACTIVITY REPORT FOR THE PERIOD ENDED 31st DECEMBER 2013 issued 30th January 2014, available at [www.stratmin.com.au](http://www.stratmin.com.au)

The principle aims are to test the continuity, volume potential and geometry of the recently identified mineralised intersections.

The 2013 drill program was prospective in nature, testing further to depth and along strike from the previously identified near-surface mineralisation. It was highly successful in intersecting multiple intersections that were on average both wider and higher grade than the previous shallow drilling and appears to indicate that the mineralisation continues to improve with depth.

This first phase of RC drilling is intended to both test this hypothesis and infill between the wider-spaced existing holes to test the continuity and geometry of this mineralisation.

Further phases of RC and diamond drilling are proposed to continue the expansion of these prospects pending these results.



**Wally Martin**  
**MANAGING DIRECTOR**

*Note: The information in the report to which this statement is attached that relates to Exploration Targets or Exploration Results is based on information compiled by Alistair Grahame, a Competent Person who is a Member of The Australasian Institute of Mining and Metallurgy. Mr Grahame is a full-time employee of Strategic Mineral Corporation NL. Mr Grahame has sufficient experience that is relevant to the style of mineralisation and type of deposit under consideration and to the activity being undertaken to qualify as a Competent Person as defined in the 2012 Edition of the 'Australasian Code for Reporting of Exploration Results, Mineral Resources and Ore Reserves'. Mr Grahame consents to the inclusion in the report of the matters based on his information in the form and context in which it appears.*

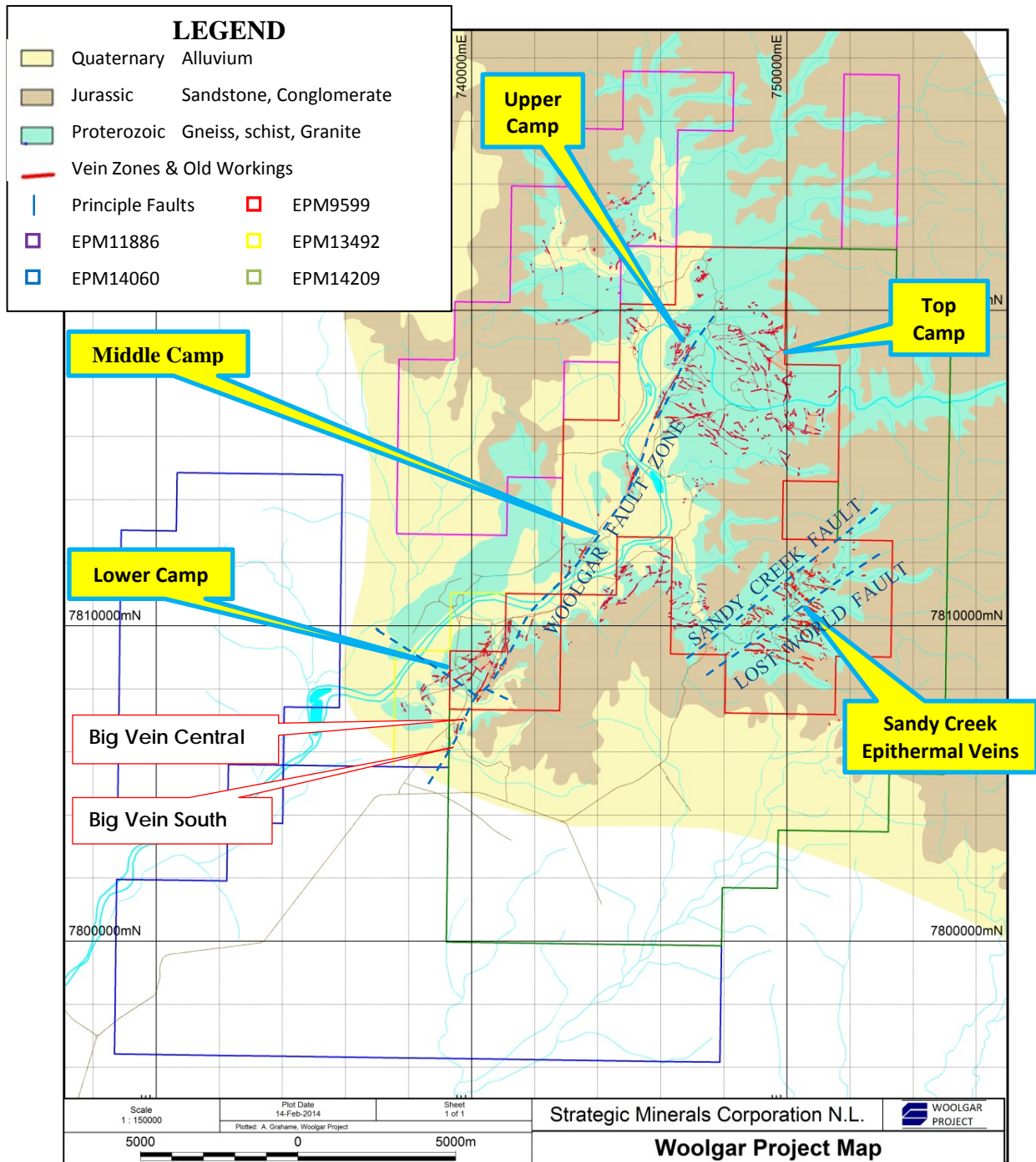


Figure 1: Simplified geological map of principle prospects in the Woolgar Project, highlighting the five main sectors and the two prospects in the proposed 2014 Phase1 drilling.

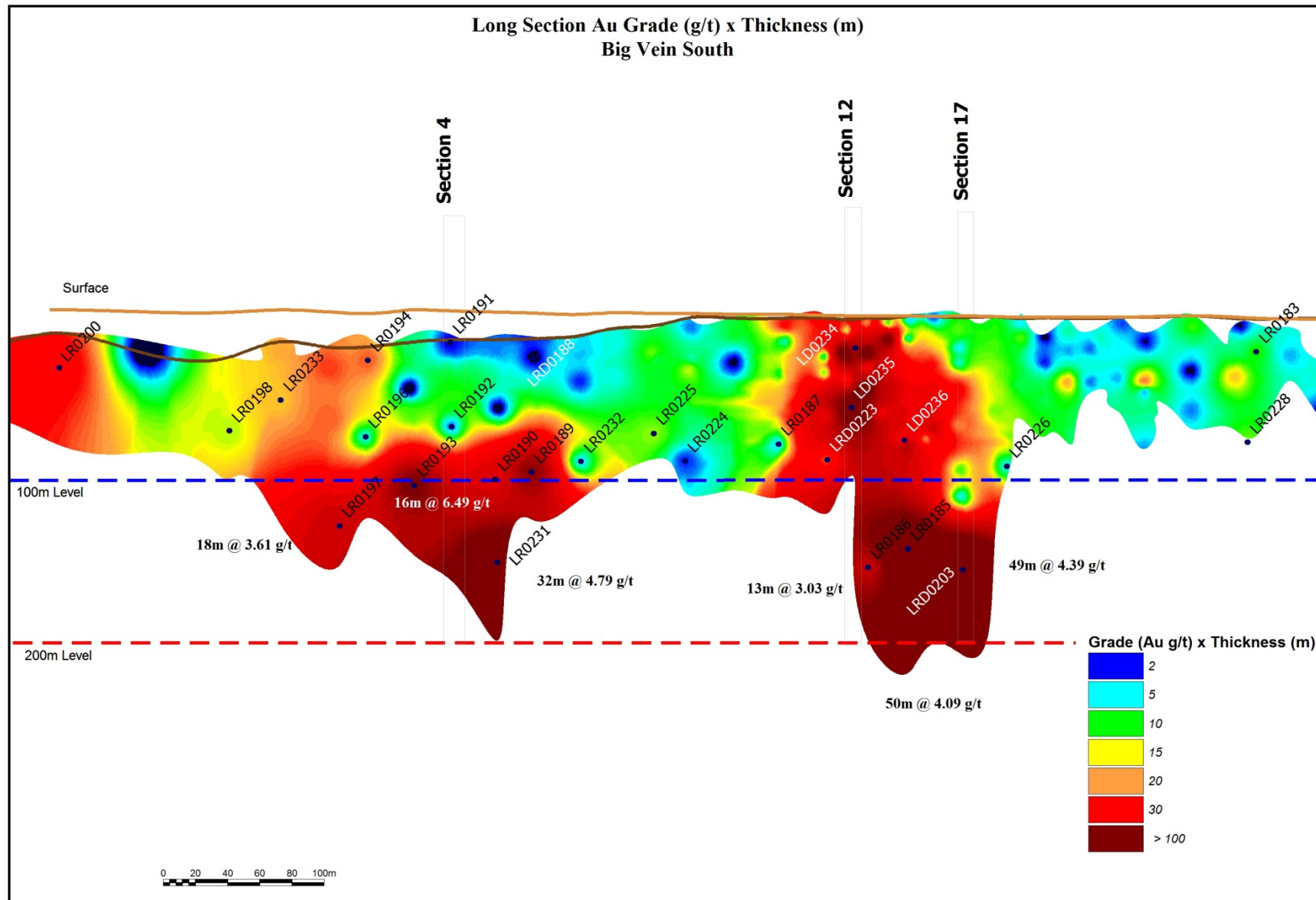


Figure 2: Long Section of BVS showing the gold grade x thickness (g/t x m) with significant deeper intersections highlighted.

Long Section Au Grade x Thickness  
Big Vein South  
Planned Intersection point 2014

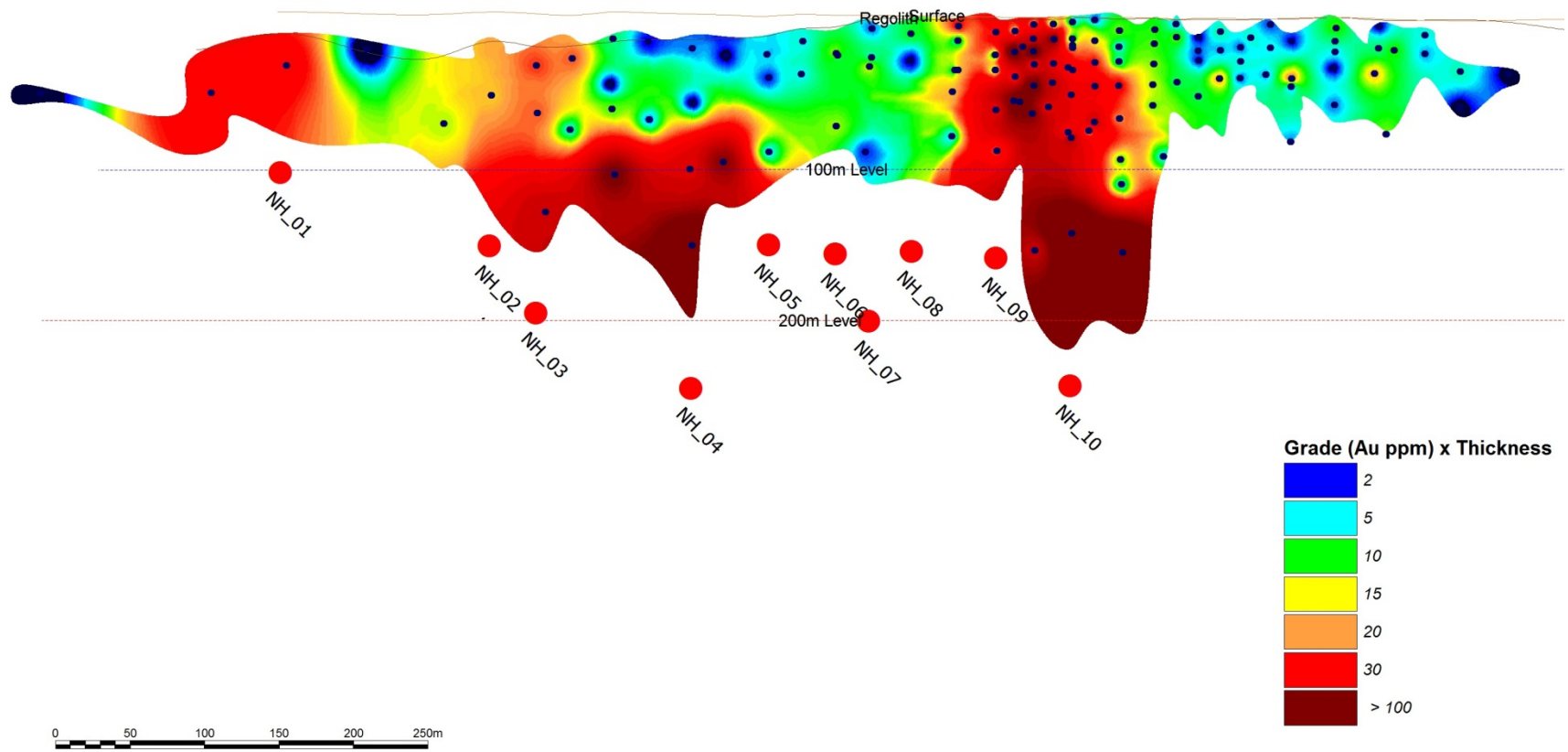


Figure 3: Long Section of BVS showing the proposed Phase 1 2014 drilling intersections against the existing gold grade x thickness (g/t x m).

Long Section Grade  
Big Vein Central  
Planned Intersections 2014

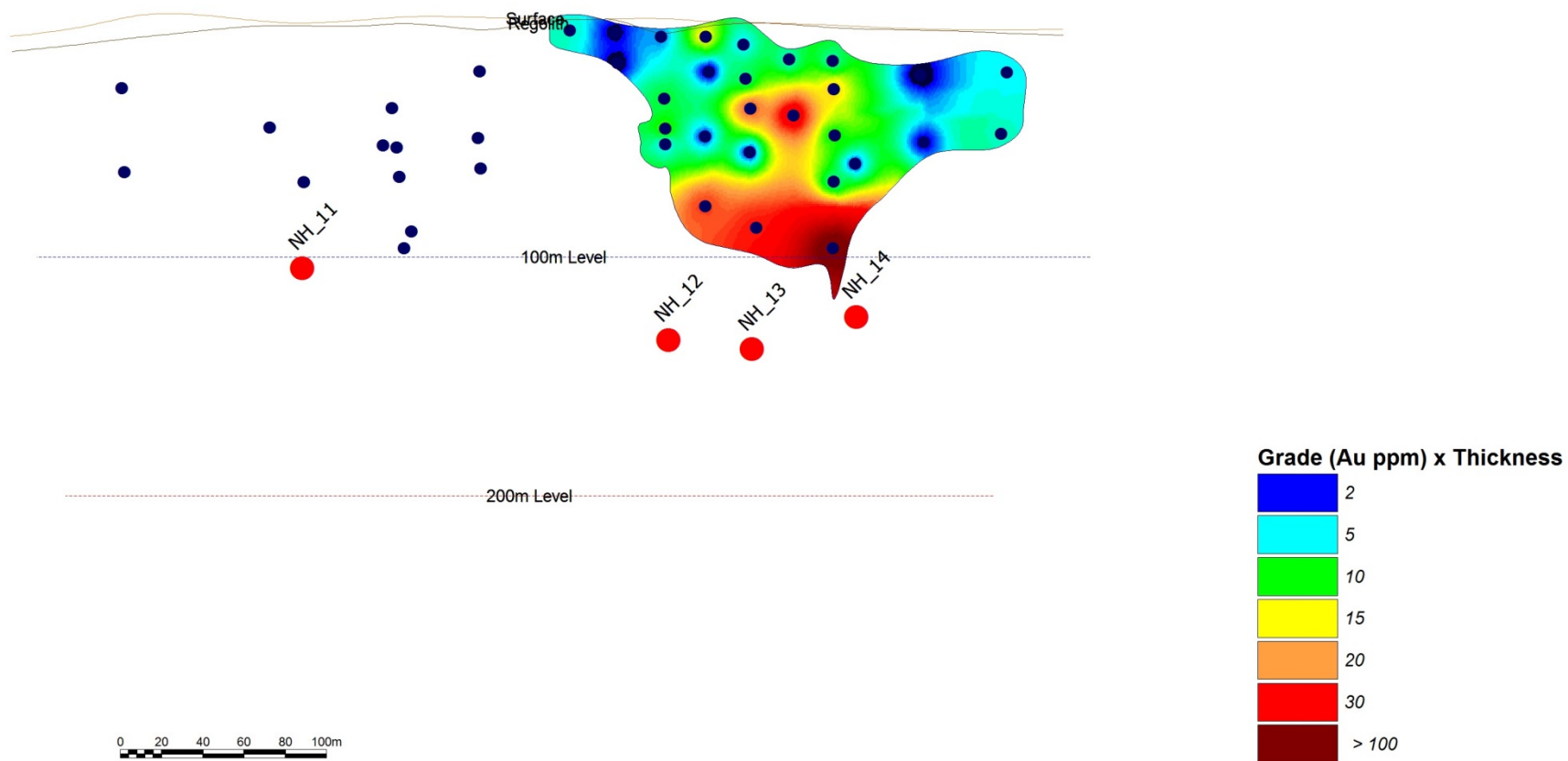


Figure 4: Long Section of BVC showing the proposed Phase 1 2014 drilling intersections against the existing gold grade x thickness (g/t x m).

Note: Grade-widths are not plotted in the southern sector of the prospect due to the apparent distortion caused by the relatively flat dip compared to north.