



**TPL Corporation Limited**  
to be renamed  
**African Chrome Fields Limited**

**ASX Code: TPL**

**ABN 72 088 749 008**

# Disclaimer & JORC Notice

The information contained in this presentation or subsequently provided to any recipient of this presentation whether orally or in writing by or on behalf of TPL Corporation Limited (“TPL Corporation or the Company”) or its respective employees, agents or consultants (Information) is provided to the recipients on the terms and conditions set out in this notice. The purpose of this presentation is to provide recipients with information relating to TPL Corporation. This presentation has been prepared by TPL Corporation and each recipient must make his/her own independent assessment and investigation of TPL Corporation and its business and assets and should not rely on any statement or the adequacy and accuracy of any information.

TPL Corporation makes no representation or warranty (either expressed or implied) as to the accuracy, reliability or completeness of the Information. TPL Corporation and its directors, employees, agents and consultants shall have no liability (including liability to any person by reason of negligence or negligent misstatement) for any statements, opinions, information or matters (express or implied) arising out of, contained in or derived from, or for any omissions from the presentation, except liability under statute that can not be excluded.

This presentation contains references to certain intentions, expectations and plans of TPL Corporation. These intentions, expectations and plans may or may not be achieved. They are based on certain assumptions which may not be met or on which views may differ. The performance and operation of TPL Corporation may be influenced by a number of factors, many of which are outside the control of TPL Corporation. No representation or warranty, expressed or implied, is made by TPL Corporation or its respective directors, employees, officers, agents, consultants or advisers that intentions, expectations or plans will be achieved either totally or partially or that any particular rate of return will be achieved.

This presentation does not constitute in any way an offer or invitation to subscribe for securities in TPL Corporation pursuant to the Corporations Act 2001 (Cth).

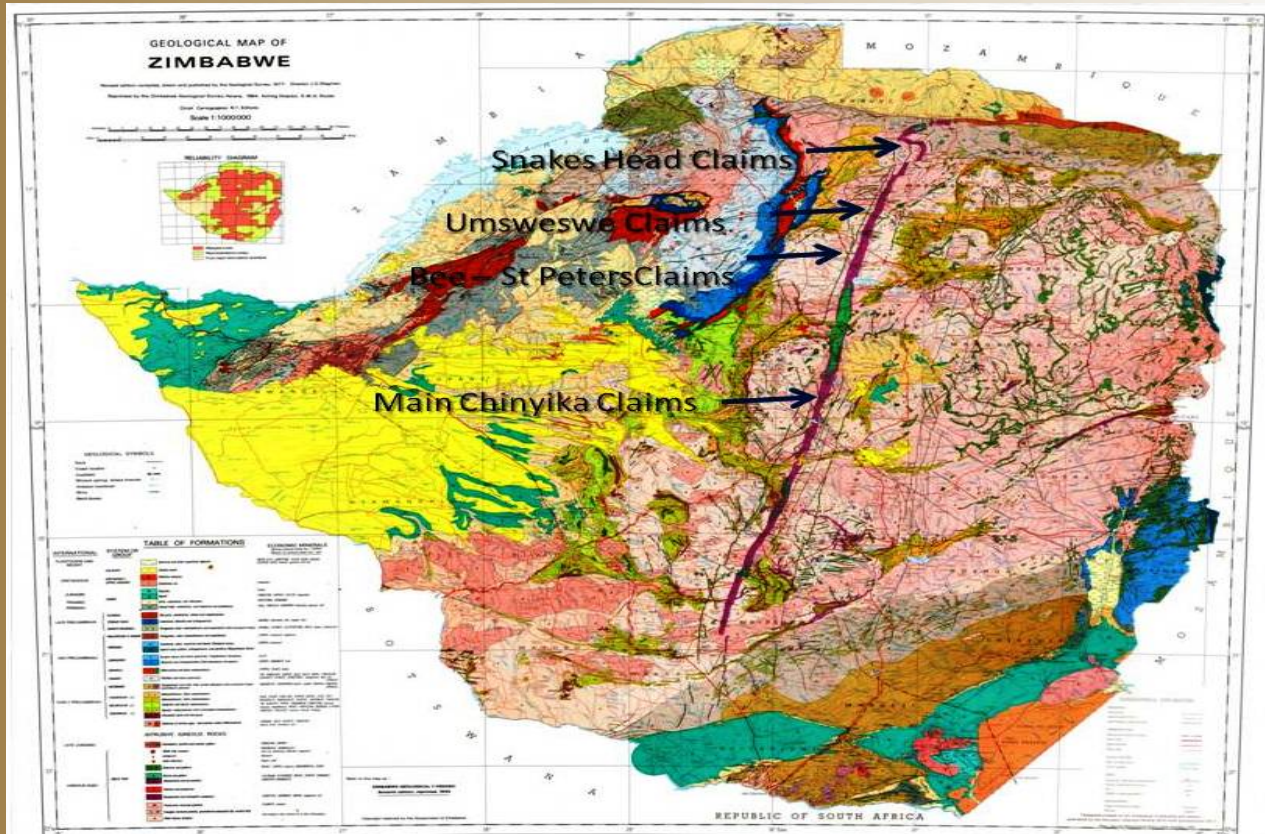
The information in this presentation that relates to Exploration Results, Mineral Resources or Ore Reserves is based on information compiled by Mr Roger Tyler, a Competent Person who is a member of The Australasian Institute of Mining and Metallurgy and The South African Institute of Mining and Metallurgy. Mr Tyler is a consultant to TPL Corporation.

Mr Tyler has sufficient experience relevant to the style of mineralisation and type of deposit under consideration and to the activity he is undertaking to qualify as a Competent Person as defined in the 2012 Edition of the “Australasian Code of Reporting of Exploration Results, Mineral Resources and Ore Reserves”. Mr Tyler consents to the inclusion in the report of the matters based on his information in the form and context in which it appears.

# Summary of African Chrome Fields

- African Chrome Fields & Fanshawe Mining Services (collectively African Chrome Fields) are the holder of approximately 150 eluvial chrome mining concessions covering approximately 60 sq km in multiple areas along the flanks of the Great Dyke in Central Zimbabwe.
- African Chrome Fields owns a modular chrome recovery plant consisting of a washing plant, spiral concentrator set and two magnetic separators which produces a chrome concentrate and a magnetite product.
- The existing plant and equipment is capable of processing approximately 30,000 tonnes per month of feedstock to generate approximately 3,000 tonnes of chrome concentrate per month.
- **African Chrome Fields is preparing to recommence operations during the 1st Quarter of 2014**

# Location of Concessions



# Chinyika Chrome Field and Plant Site



- African Chrome Fields owns its own processing infrastructure.
- African Chrome Fields designed, built and operated a modular chrome recovery plant capable of producing approximately 3,000 tpm of chrome concentrate and 2,000 tpm of Magnetite.

# Recovery Plant



- Processing plant can produce a concentrate with:  $\text{Cr}_2\text{O}_3 > 50\%$  2:1 Cr/Fe ratio and  $< 1\% \text{SiO}_2$  \* suitable for chemical grade applications.
- Good Infrastructure, power, water and roads.

\* (*independent laboratory test, Identification Code ACF012 Lab Report 4999*)

# FerroChrome Smelter – Scoping Study



- Feed stock for smelting to produce a +65% ferrochrome with very low impurities.
- Module 1 has been completed and Module 2 of the scoping study is being prepared
- Opportunity to be a leading player in the eluvial Chrome production industry by mining our own feedstock, upgrading and smelting.

# Option Deal Terms

- As announced to ASX on 19 August 2013, pursuant to the terms of the Heads of Agreement and subject to certain conditions and note below, TPL has acquired a 12 month option to subscribe for new shares representing 70% of the fully diluted capital of African Chrome Fields (Pvt) Limited ("African Chrome Fields") and its 100% owned subsidiary, Fanshawe Mining Services (Pvt) Limited ("Fanshawe") ("the Option").
- Farvic Consolidated Mines (Pvt) Limited ("Farvic") will hold the remaining 30% equity interest in African Chrome Fields. Farvic is a Zimbabwean registered company that is compliant with Zimbabwe Indigenisation Legislation.
- TPL has paid an amount of US\$50,000 to Farvic as a non refundable option fee.
- During the option period TPL will fund and complete a feasibility study to build a ferrochrome smelter. (This feasibility study is expected to cost no more than US\$50,000 and the costs will be treated as an unsecured loan to African Chrome Fields.)
- Upon exercise of the Option, TPL will subscribe (via the conversion of its loan) for new shares to the value of US\$50,000 in African Chrome Fields which represents 70% of the fully diluted capital of African and issue to Farvic or its designated allottees 525 million ordinary fully paid TPL shares.
- **A meeting of TPL shareholders to approve the exercise the Option and to change the Company's name to African Chrome Fields Limited is scheduled for 21 February 2014**
- *Note: The Heads of Agreement contemplated TPL subscribing for new shares in each of African Chrome Fields and Fanshaw representing 70% of each of their fully diluted capital. Due to a, TPL approved, capital re-organisation Fanshaw is now a 100% owned subsidiary of African Chrome Fields. TPL proposes to subscribe for new shares representing 70% of the fully diluted capital of African Chrome Fields.*



# Zimbabwe Investment Authority Approval to own 70% of African Chrome Fields - Received

The Company has received a Zimbabwe Investment Authority Licence to own a 70% equity interest in African Chrome Fields with the following conditions:

- TPL funds a feasibility study to build a ferrochrome smelter on African Chrome Field's land holding
- TPL funds all exploration costs and upon commencement of production, funds development costs
- Funding to be arranged via secured loans to the subsidiaries carrying a commercial interest rate having regard to operating risks of the company
- All loans have priority for repayment in front of any payments of dividends
- After repayment of all loan funds, dividends may be payable
- Farvic has the right to claw back a 21% equity interest in African Chrome Fields via the purchase of shares from TPL Corporation. Funds to be used for the purchase must be from dividend payments from African Chrome Fields and the valuation per share shall be 'market value' or a valuation calculated as 5xEBITDA (whichever is the higher).

*Background:* Under the laws of Zimbabwe, all operating companies must be either 51% owned by indigenous parties or have the capability to be 51% owned.

# Exec Management & Board of Directors

**Hugh Warner (45) Executive Chairman** Mr Warner is an Australian resident and holds a B.Econ from the University of Western Australia. He has been a director of numerous companies listed on the ASX and AIM, primarily focused on the resources industry.

**Duncan (Harry) Greaves (48) Non-Exec Director** Mr Greaves is a 4<sup>th</sup> generation Zimbabwean and a resident of Zimbabwe. He holds a B.Sc (agriculture) from University of Natal. He is the founding shareholder of Farvic Consolidated Mines (Pvt) Ltd which operates the Prince Olaf, Farvic and Nicolson gold mines in southern Zimbabwe all of which he brought back into production over the last 10 years including the design and construction of two milling facilities. He was also the driving force behind the acquisition of the Penhalonga Gold Project and the Bushtick Gold Project. He is a well respected and well known member of the Zimbabwe mining fraternity. *He is a shareholder in Farvic Consolidated Mines and if TPL exercises its option, he will be a major shareholder in TPL Corporation.*

**Neil Hackett (45), Non-Exec Director and Company Secretary, BEc FFin CSA GAICD** Mr Hackett has approximately 19 years company secretarial, compliance and corporate governance experience including 7 years ASX200 listed company secretary experience with diversified industrial and financial services entities. Neil holds a Bachelor of Economics and is a Fellow of Finsia, GAICD and Affiliate of Chartered Secretaries Australia.

**Chris Hilbrands (35) Chief Financial Officer** Mr Hilbrands has worked as Chief Financial Officer for a number of public companies listed on the ASX and AIM, primarily resources focused. He has been responsible for the day to day financial and administrative operations together with the statutory reporting and compliance obligations of these organisations. He has a B.Com and is a Chartered Accountant.

# Advisors & Consultants

**Andrew Halsted (47)** is a fourth generation Zimbabwean, who was educated at Michaelhouse and returned to Zimbabwe having qualified as a Chartered Accountant in Australia. Since 1992, he has managed his family owned trading business, Halsted Brothers (Pvt) Ltd. In 2002, Andrew was a founding shareholder of Farvic Consolidated Mines (Pvt) Ltd which operates the Prince Olaf, Farvic and Nicolson gold mines in southern Zimbabwe. In 2003, he established Titan Drilling, a company which provides exploration drilling services in Zimbabwe, Mozambique, Zambia and the Democratic Republic of Congo. *He is a shareholder in Farvic Consolidated Mines and if TPL exercises its option, he will be a major shareholder in TPL Corporation and join the Company as a director.*

**Roger Tyler, (49) Chief Geologist** He is a British geologist, who after almost 25 years working experience in Africa, is now Technical Director for Farvic. He has an Honours degree in Mining Geology from the Royal School of Mines and a Master of Engineering in Mineral Resource Estimation from Witwatersrand University. Roger worked for 15 years as a geologist in various African countries and later as a Senior Resource Analyst for Anglo American Corporation. Most recently however, he was Anvil Mining's DRC exploration manager and led the programme which resulted in the development of the new Kinsevere mine. *He is a shareholder in Farvic Consolidated Mines and if TPL exercises its option, he will be a major shareholder in Prospect.*

# Corporate Overview

ASX Code: TPL

Shares on issue: 782 M  
Options: 205 M  
Share price : 0.4 cents  
Market Cap: \$3.13M

## Top Share Holders

Directors & Management 24%  
Top 50 Shareholders 68%

## Board of Directors

Hugh Warner:

Harry Greaves:

James Pratt:

Neil Hackett

Exec-Chairman

Non-Exec Director

Non-Exec Director

Non-Exec Director &

Company Secretary

## Contact Information

**Hugh Warner**

[hugh@anglopacific.com.au](mailto:hugh@anglopacific.com.au)

+61 413 621 652

**Harry Greaves**

[harry@zimbabwemining.com](mailto:harry@zimbabwemining.com)

+263 772 144 669