



NZX Limited - Monthly Shareholder Metrics

December 2017

These Shareholder Metrics represent the key features of NZX's operations in each of its core businesses. The Metrics focus on what drives the revenue performance of NZX, so as to give a consistent and transparent comparison across time periods for each business line.

Markets

NZX Listed Issuers			Dec 2017	Change YoY
Total Equity Securities	159	-6.5%		
Total Listed Debt Securities	113	5.6%		
Total Other Securities	25	-7.4%		
Total Listed Securities	297	-2.3%		
Total NZX Main Board Issuers	159	-4.8%		
Total NZAX Issuers	16	-11.1%		
Total NXT Issuers	3	-25.0%		
Total NZDX Issuers	45	4.7%		

Capital Raising			Dec 2017	YTD
New Capital Listed				
IPOs and Compliance Listings	\$0.00 b	\$0.48 b		
New Debt Listings	\$0.28 b	\$3.23 b		
Secondary Capital Raisings				
Total Capital Raised By All Issuers	\$756 m	\$4,382 m		
Total Equity Raised - Primary Issuers	\$300 m	\$1,415 m		
Total Equity Raised - Dual & Secondary Issuers	\$341 m	\$1,693 m		
Total Debt Raised	\$116 m	\$1,274 m		
Number of Capital Raising Events	24	184		
Capital Raised < \$0.5m	4	29		
Capital Raised > \$0.5m < \$10m	12	85		
Capital Raised > \$10m < \$100m	6	65		
Capital Raised > \$100m	2	5		

Market Capitalisation	Dec 2017	Change YoY	% of GDP
All Equity	\$135.2 b	17.0%	50.0%
All Debt	\$26.4 b	2.7%	9.7%

NZX Indices Performance			Dec 2017	Change YoY
S&P/NZX 50 Index	8,398	22.0%		
S&P/NZX 50 Portfolio Index	5,225	23.7%		
S&P/NZX A-Grade Bond Index	5,155	6.1%		
S&P/NZX All Swap Index	202	5.2%		

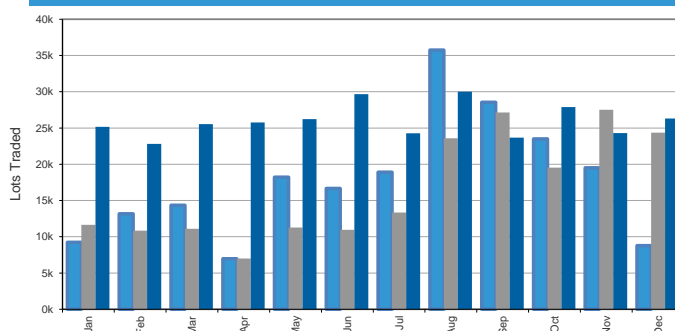
Cash Market Trading			Dec 2017	Change YoY
Total Trades	174,348	43.4%		
Daily Average Trades	9,176	50.9%		
Total Trades < \$50k	166,070	46.9%		
Total Value Traded	\$3.0 b	1.6%		
Daily Average Value Traded	\$159 m	6.9%		
Total Equity Transactions				
Total Trades	171,731	45.5%		
Value Traded	\$2.9 b	1.9%		
Total Debt Transactions				
Total Trades	2,617	-26.2%		
Value Traded	\$132 m	-5.1%		
Cumulative Numbers - YTD				
Number of Trades	2,053,487	17.0%		
Total Value Traded	\$44.0 b	0.1%		
Clearing House / Depository				
Gross Value of Cleared Trades over Month	\$3.0 b	1.3%		
Collateral Held At Month End	\$28.6 m	-19.8%		
Depository transactions	2,169	8.1%		
Assets under custody in depository	\$494 m	32.6%		
Value of stock lent over month	\$437 m	65.7%		
Wholesale Data				
Terminal Numbers - Professional*	6,058	-4.7%		
Terminal Numbers - Retail*	1,321	8.4%		
Licences - Value > \$20k pa	34	21.4%		
Licences - Value < \$20k pa	63	-1.6%		

Direct Data Products			Dec 2017	Change YoY
Proprietary Security Subscription Products	404	2.3%		
- Products ≥ \$3,000 p.a	159	5.3%		
- Products < \$3,000 p.a.	245	0.4%		

* 3 month average

Derivatives	Dec 2017	Change YoY
Futures - Total Lots Traded	24,500	29.2%
Options - Total Lots Traded	1,800	-66.7%
Open Interest	52,163	4.2%

Derivatives Total Lots Traded 2016 / 2017 / 2018



Energy Contracts	Dec 2017
Operating / Technology Contracts	17
- Contracts > = \$500k p.a.	4
- Contracts < \$500k p.a.	13

Funds Services

SuperLife	Dec 2017	Change YoY
Funds Under Management - KiwiSaver	\$749 m	25.1%
Funds Under Management - Other	\$1,250 m	17.8%
Total	\$1,999 m	20.4%

Smartshares	Dec 2017	Change YoY
Funds Under Management - External	\$701 m	44.1%
Funds Under Management - SuperLife funds	\$1,430 m	17.4%
Total	\$2,131 m	25.0%
Units on Issue	875 m	12.9%

NZX Wealth Technologies	Dec 2017	Change YoY
Funds Under Administration	\$1,167 m	-9.6%
Renamed from Apteryx		

Agri

Direct Data Products	Dec 2017	Change YoY
Subscriptions - NZ Agri Data Products	3,122	27.9%
Subscription - Australian Agri Data Products	1,514	-3.1%
Total Paid Advertising Page Equivalents*	68	44.6%
Total Paid Advertising Page Equivalents YTD*	1,382	-28.7%

* Total paid advertising page equivalents relates to Farmers Weekly only.

Notes

1. All figures are measured at the end of the last trading day of the month unless otherwise stated. Change refers to the change since the same period last year unless otherwise stated i.e. Change YoY is change versus the same period last year.
2. All Equity Market Capitalisation includes all securities quoted on the NZX Main Board, NZX Alternative Market and NXT Market.
3. Market Capitalisation for the NZX Debt market is the total nominal (face) value of all quoted securities excluding New Zealand Government Stock.
4. NZX Limited wishes to remind readers that the above operational statistics are based on the Group's internal records, which are unaudited. Differences may arise between this data and that disclosed in subsequent audited financial statements.

To enquire about NZX products or services, please contact: NZX Data on +64-4-471 4390
or email: data@nzx.com

To enquire about information listed on this sheet, please email cds@nzx.com