



WIA**GOLD**

Developing Namibia's nascent gold industry

September 2024

Disclaimer

General Information and Disclaimer

This presentation has been prepared for the purposes of providing information to the recipient regarding Wia Gold Limited (**WiaGold** or the **Company**). It does not, and does not purport to, contain all the information that the recipient may require to evaluate the Company. It should be read in conjunction with WiaGold's other periodic and continuous disclosure announcements, which are available at www.asx.com.au.

No representation or warranty is given as to, and the recipient must not rely on, any information, statement or opinion contained in this presentation, or its accuracy, reasonableness or completeness. Except for statutory liability which cannot be excluded, each of WiaGold, its affiliates, directors, employees, advisers and agents expressly disclaims any responsibility for the accuracy or completeness of the material contained in this presentation and excludes all liability whatsoever for any loss or damage of any kind arising as a result of the use of, or reliance on, the information in this presentation.

This presentation does not take into account the investment objectives, financial situation or particular needs of any investor, potential investor or any other person. No investment decision should be made in reliance on this presentation. Independent financial and taxation advice should be sought before making any investment decision.

Forward Looking Statements

This presentation may contain certain forward looking statements and projections regarding: estimated, resources and reserves; planned production and operating costs profiles; planned capital requirements; and planned strategies and corporate objectives.

Forward-looking statements are subject to a variety of known unknown risks, uncertainties and other factors that could cause actual events or results to materially differ from those reflected

in the forward- looking statements, including, without limitation: inherent uncertainties and risks associated with mineral exploration; uncertainties related to the availability of future financing necessary to undertake activities on WiaGold's properties; uncertainties related to the possible recalculation of, or reduction in WiaGold's minerals resources; uncertainties related to the outcome of studies; uncertainties relating to fluctuations in gold prices; the risk that WiaGold's title to its properties could be challenged; risks related to WiaGold's ability to attract and retain qualified personnel, uncertainties related to general economic and global financial conditions; uncertainties related to the competitiveness of the industry; risk associated with WiaGold being subject to government regulation, including changes in regulation; risks associated with WiaGold being subject to environmental laws and regulations, including a change in regulation; risks associated with WiaGold's need for governmental licenses, permits and approvals; uninsured risks and hazards; risk related to the integration of businesses and assets acquired by WiaGold; risk associated with WiaGold having no history of earnings or production revenue; risks associated with fluctuation in foreign exchange rates; risks related to default by joint venture parties (if any), contractors and agents, inherent risks associated with litigation; risk associated with potential conflicts of interest; risk related to effecting service or process on directors resident in foreign countries; uncertainties related to WiaGold's limited operating history; risks related to WiaGold's lack of a dividend history; risks relating to short term investments; and uncertainties related to fluctuations in WiaGold's share price.

WiaGold's forward-looking statements are based on the assumptions, beliefs, expectations and opinions of management as of the date hereof and which WiaGold believes are reasonable in the circumstances, but no assurance can be given that these expectations will prove to be correct. These assumptions include but are not limited to that WiaGold's exploration of its properties and other activities will be in accordance with WiaGold's public statements and stated goals, that there will be no material adverse change affecting WiaGold or its properties, anticipated

costs and timing for WiaGold's activities and such other assumptions as set out herein.

Such forward looking statements/projections are estimates for discussion purposes only and should not be relied upon. They are not guarantees of future performance and involve known and unknown risks, uncertainties and other factors many of which are beyond the control of the Company.

The forward-looking statements/projections are inherently uncertain and may therefore differ materially from results ultimately achieved.

The Company does not make any representations, provides no warranties concerning the accuracy of the forward looking statements and disclaims any obligation to update or revise any forward-looking statements based on new information, future events or otherwise except to the extent required by applicable laws.

Mineral Resource Estimate

The information in this presentation that relates to the mineral resource estimate for the Kokoseb Project was reported in an announcement dated 16 April 2024. The Company confirms that it is not aware of any new information or data that materially affects the information included in the original market announcement and that all material assumptions and technical parameters underpinning the mineral resource estimate in that announcement continue to apply and have not materially changed.

Previously Reported Results

There is information in this presentation relating to exploration results which were previously announced, the dates of which are referenced in the presentation. The Company confirms that it is not aware of any new information or data that materially affects the information included in the original market announcements.

Corporate snapshot

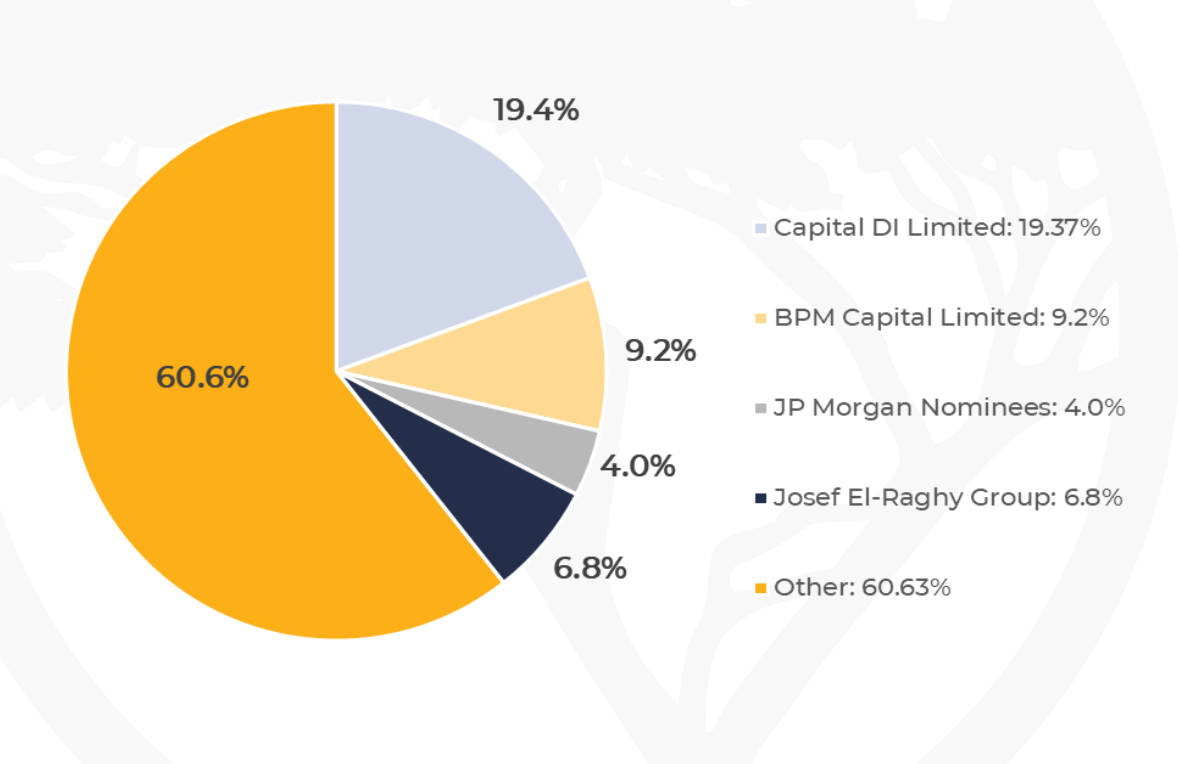
ASX: WIA

Capital Structure

Share price (A\$/share) ¹	0.11
Total shares on issue – pro-forma (M) ²	1,145
Options and performance rights – pro-forma (M) ³	98
Market cap (A\$M, undiluted)	114
Cash – pro-forma (A\$M) ⁴	15.1
Debt (A\$M) ⁴	Nil

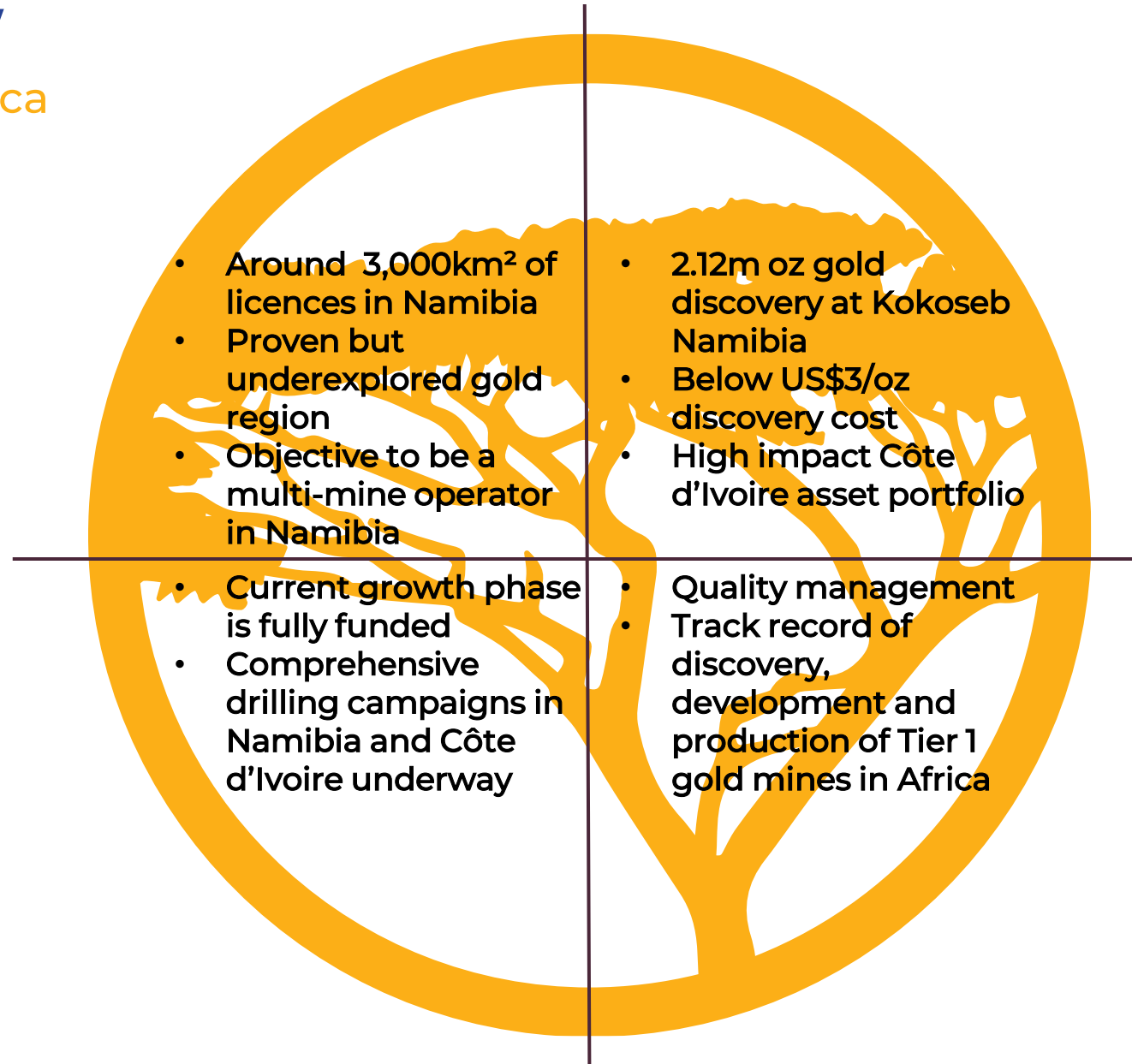
1. At 4 September 2024 (closing price)
2. At 4 September 2024
3. At 4 September 2024, 65.1 million options with various strikes and expiries, and 33 million performance rights with various milestones
4. At June 30 2024

Register Composition



Company Overview

Targeted strategy in Africa



Board and key management

Experienced leadership team with a proven track record of discovery

Josef El-Raghy
Executive Chair



Previously Chairman and CEO of Centamin Plc, a gold miner that he guided from exploration, development and into production, Josef engineered its market cap to grow from US\$20 million to \$4bn. This journey included a listing on the LSE, and today it is the longest standing gold producer listed in the FTSE 250 index. Josef is currently Non-Exec Chair of AIC Mines, a gold and copper producer in Western Australia.

Scott Funston
Chief Financial Officer



Scott has a broad range of resource industry experience through all facets of the mining cycle from acquisition, exploration, discovery, feasibility, financing, construction, operations and divestment through to sale or M&A. Scott has proven executive level experience in a number of ASX listed public companies operating in a variety of diverse countries and cultures having assisted several resources companies operating throughout Australia, South America, Asia, USA, and several years with African based companies.

Andrew Pardey
Non-Executive Director



Currently Managing Director at Predictive Discovery, which is developing the largest gold discovery in West Africa for the past decade, Andrew has over 30 years' experience in exploration, project development and operations. Previously CEO of Centamin Plc (2015-19), he has held senior positions in Africa as part of Guinor Gold Corporation and Ashanti Goldfields, now AngloGold Ashanti. Andrew is a Non-Executive Director of ASX-listed Marvel Gold Ltd.

Pierrick Couderc
Exploration Manager



Pierrick has over 20 years' experience in a range of commodities and geological settings. Most recently, he served as the Côte d'Ivoire Exploration Manager for Centamin Plc. Notably, he led the team which discovered the 5.4Moz Doropo Project and the 2.2Moz ABC Project. Pierrick is a French national and fluent in both English and French.

Mark Arnesen
Non-Executive Director



Mark is a Chartered Accountant with over 30 years' experience in the international resources industry and extensive expertise in the structuring and negotiation of finance for major resource projects. Mark has held executive roles with Billiton/Gencor, AngloGold Ashanti, Equinox Minerals Limited, Gulf Industrials Limited and Nzuri Copper Limited.

Matthew Foy
Company Secretary



Matthew is a highly qualified chartered secretary and a Fellow of Governance Institute Australia. With over 15 years of experience, he brings a wealth of knowledge in public company compliance, ASX Listing Rules, transactions, and governance.

Management track record in African gold mining

Tier 1 gold mine experience in Africa

Siguiri, Guinea

Development and production
Built in 2005 by AngloGold Ashanti
Production of 200-250koz/pa

Bankan, Guinea

Discovery, development
3+m oz reserve
5+m oz resource
PFS published (June '24)

Doropo, Côte d'Ivoire

Discovery, development
1.9m oz reserve
5+m oz resource
DFS published (July '24)

Kokoseb, Namibia
Discovery
2.12m oz resource

Lefa, Guinea

Built in 2008 by Crew Gold
Production of C. 200-250koz/pa

Sukari, Egypt

Discovery, development, production started in 2009
6m oz produced to date
9m oz resource remaining

Track record

- Discovered many gold mines in Africa, which have produced 11m+ oz, 21m+ reserves/resources





Kokoseb & Namibia



POLITICALLY STABLE & MINER FRIENDLY

- Stable democracy, independent judiciary, diverse economy
- Political and social support of mining with stated ambitions to develop mineral resources
- Namibia is a low-risk jurisdiction, ranked 26/62 by the Fraser Institute 2022 Survey of Mining Companies for policy attractiveness (above British Columbia, Queensland, Victoria, Yukon and Guyana)

OUTSTANDING INFRASTRUCTURE

- The Kokoseb project has road access from the capital Windhoek
- Benefiting from access to modern port, rail and power

NAMIBIA'S GOLD DISTRICT

- Kokoseb joins producing QKR's Navachab, B2Gold's Ochjikoto, and Osino's Twin Hills (DFS) and Ondundu (exploration) projects in a rapidly growing gold district

LONG ESTABLISHED MINING INDUSTRY

- Major revenue earner & employer in Namibia (8% of GDP, 40% of foreign earnings)
- Stable tax code and fair fiscal terms (37.5% tax, 3% royalty, 1% export levy, 14% VAT)
- Current and former in-country mining producers (gold, diamonds, uranium copper & industrial metals)



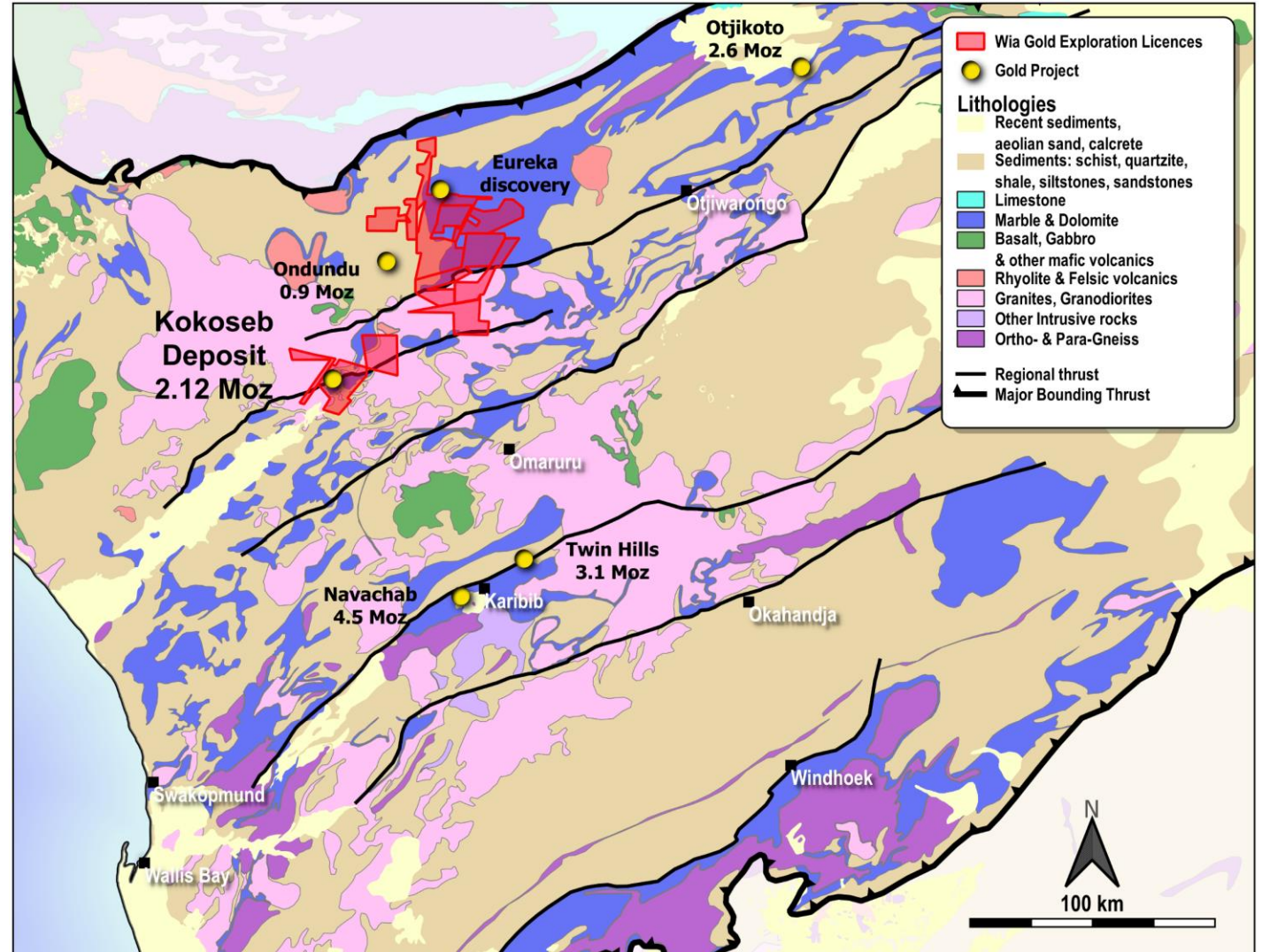
Wia Gold – Namibia licences

Fast growth license holder in proven gold jurisdiction

Exploration licenses covering about 3,000km², including 500km² under application

Lies within the Pan-African Damara Orogenic Belt which is largely underexplored for gold mineralisation

Gold deposits style sediments hosted, structurally controlled



Rapidly developing gold company in Namibia

June 2019: Entered a JV with Epangelo to acquire Okombahe exploration licence in Namibia	Q3 2021: Significant soil anomaly discovered at Kokoseb	Q2 2022: Maiden DD drilling campaign of 1,750 metres	May 2023: Maiden inferred resource of 1.3m oz @ 1.0gpt	April 2024: MRE inferred resource increase by 63% to 2.12m oz @ 1.0gpt	Q2 2025: Updated MRE expected
--	---	--	--	--	-------------------------------

Rapid development of Kokoseb – from soil sampling to MRE of 2.12m/oz in 3 years

September 2020: Management change
A\$7m raised for initial exploration programme

October 2022: Raised A\$6.6m for maiden resource drilling programme

August 2023: Raised A\$11m

May 2024: Raised A\$17m

Transformational Kokoseb gold discovery

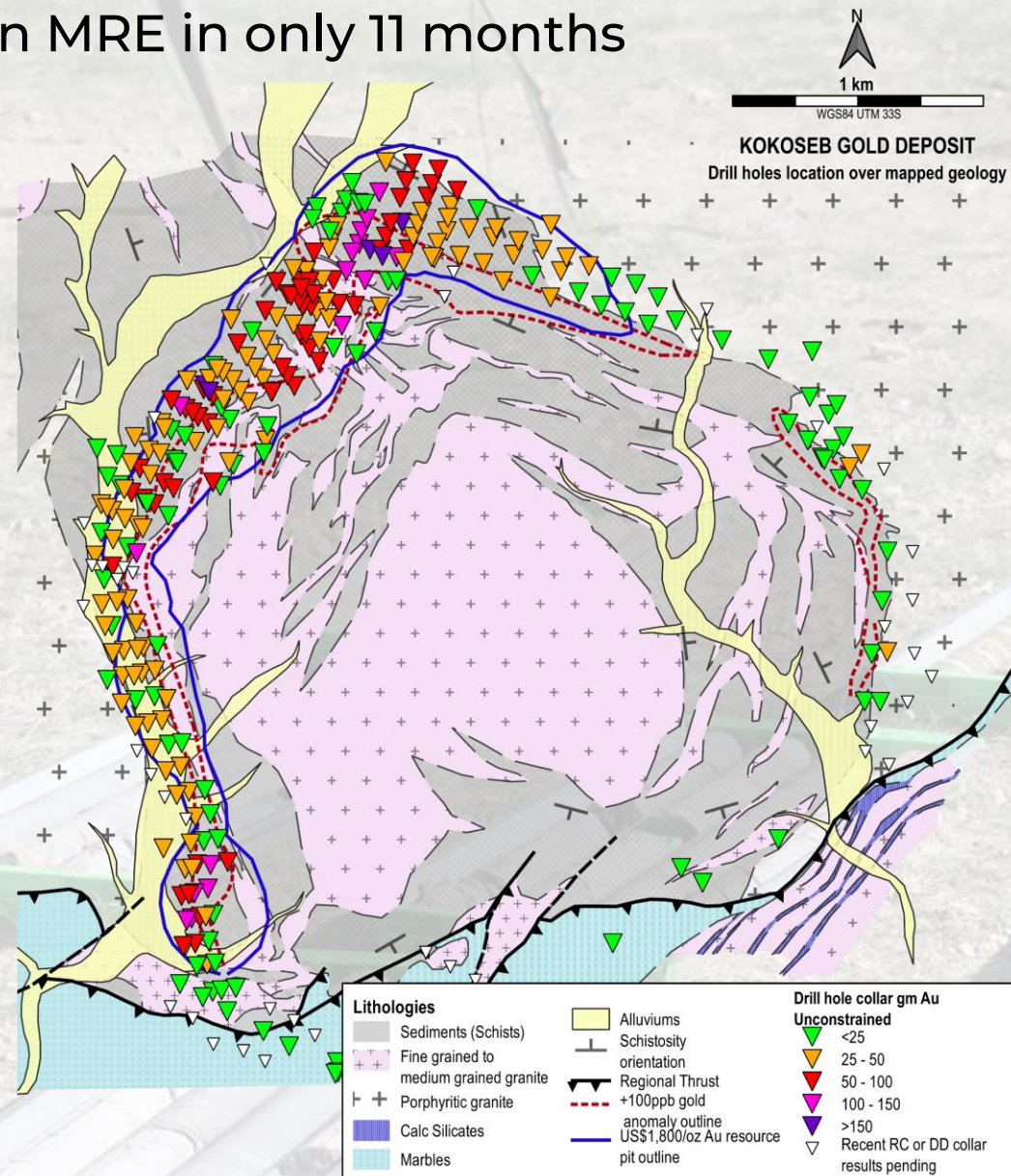
Updated MRE represents 63% increase from Maiden MRE in only 11 months

Inferred
Mineral
Resource
Estimate

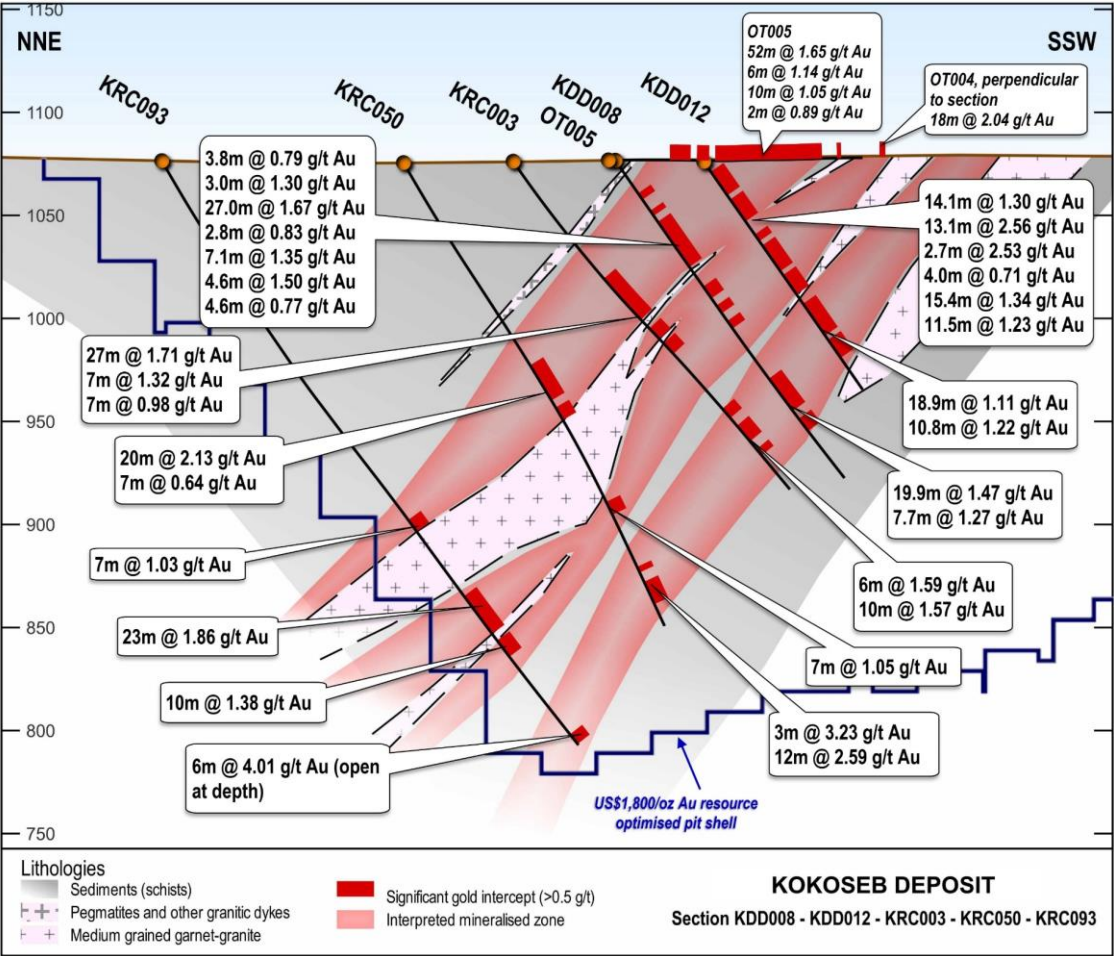
2.12 Moz at 1.0 g/t Au
at 0.5 g/t cut-off¹

- Simple Open pit:
 - Outcropping mineralisation, with max. of 2m cover
 - Average weathering depth of ~30m
- Large, contiguous gold deposits:
 - Updated MRE includes higher-grade 1.53 Moz at 1.4 g/t Au (at 0.8 g/t cut-off) from 47km of drilling
 - Discovery and definition cost of only US\$2.8/oz
- Simple metallurgy:
 - Metallurgical testwork concluded gold recoveries of 92%¹
 - Leach kinetics were rapid with majority of gold leaching in 2 - 4 hours

1. Refer to Appendix A and ASX announcement 16 April 2024. WIA confirms that it is not aware of any new information or data that materially affects the information included in those releases. All material assumptions and technical parameters underpinning those releases continues to apply and has not materially changed.



A Discovery from Basic Surface Exploration

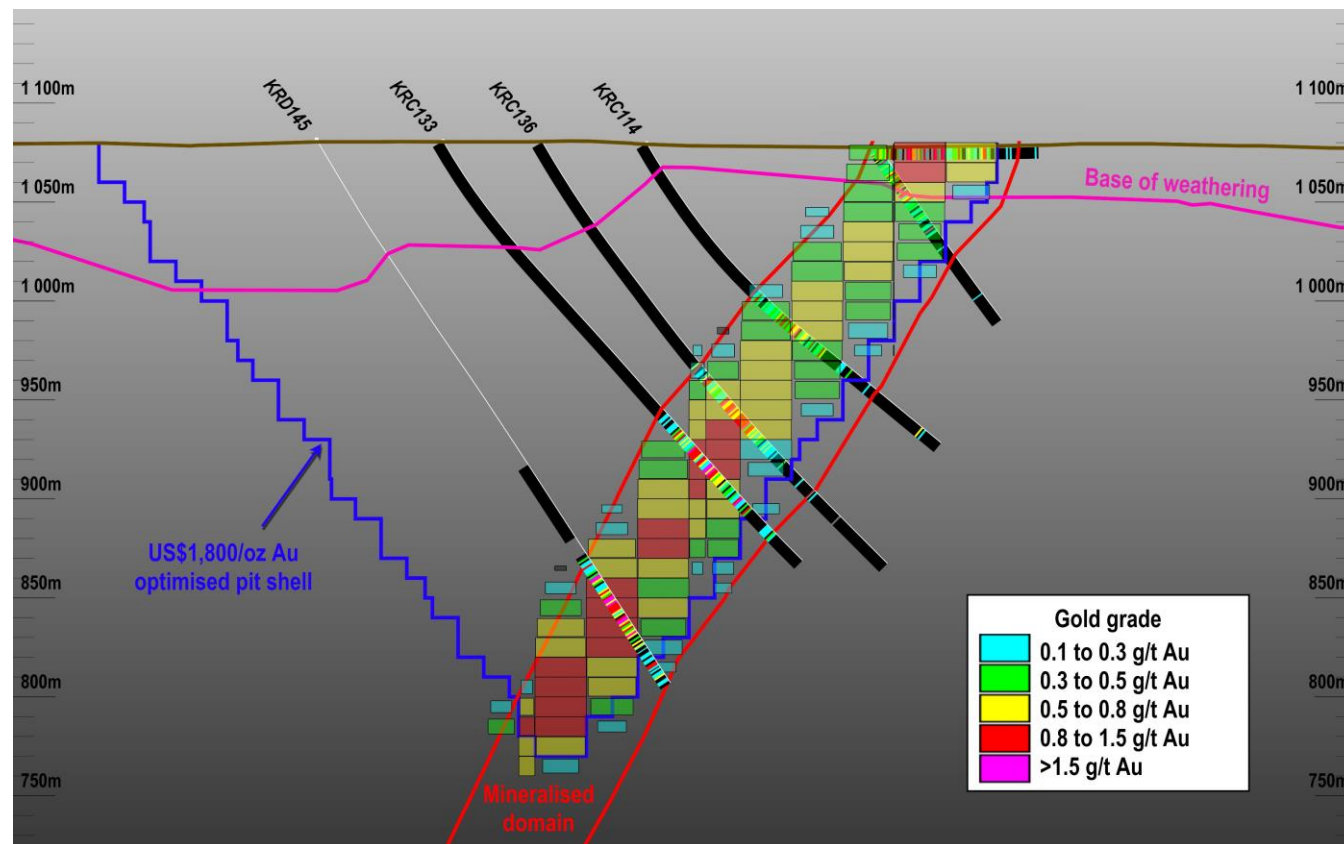


1. Refer to Appendix A and E, and ASX announcement 16 April 2024. WIA confirms that it is not aware of any new information or data that materially affects the information included in those releases. All material assumptions and technical parameters underpinning those releases continues to apply and has not materially changed.

Readily open-pittable gold mineralisation

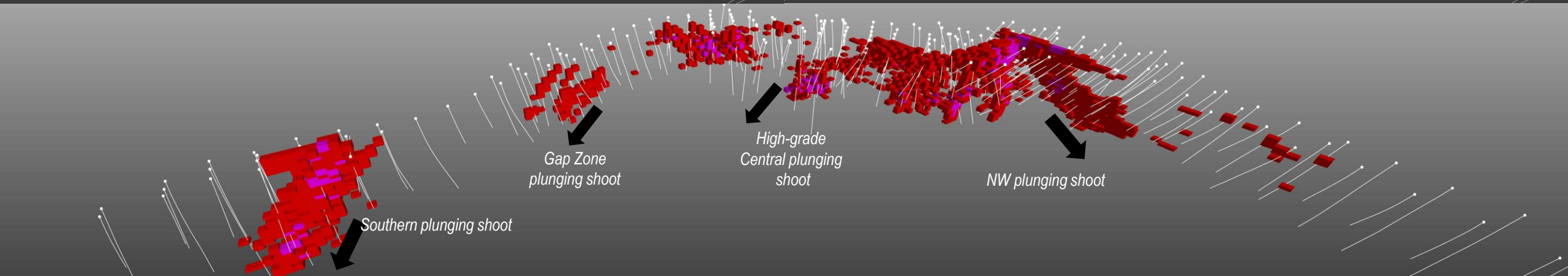
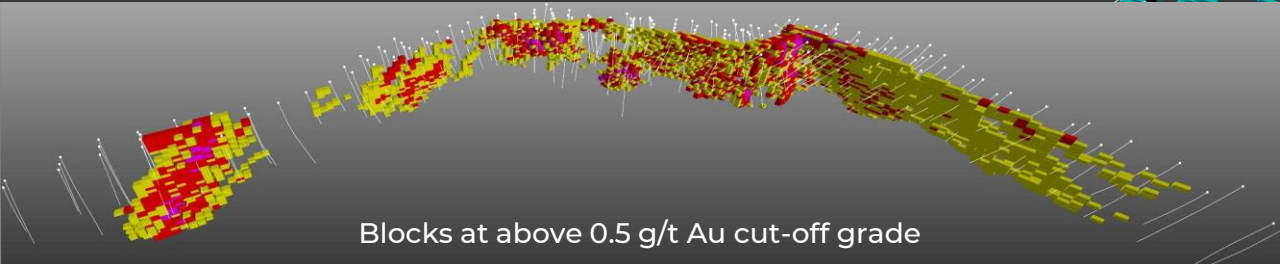
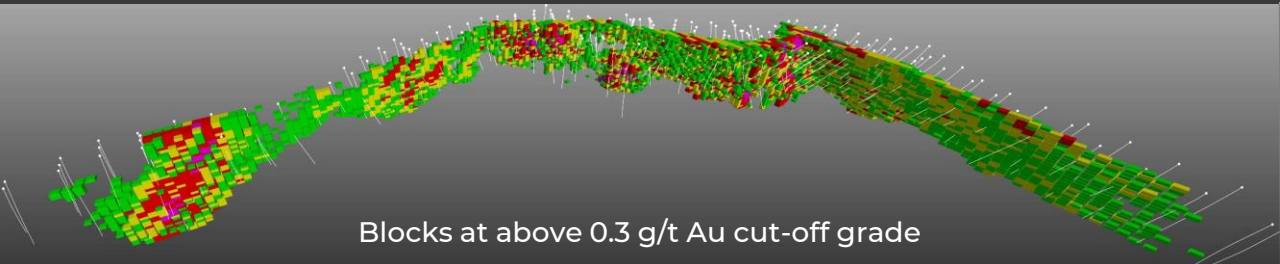
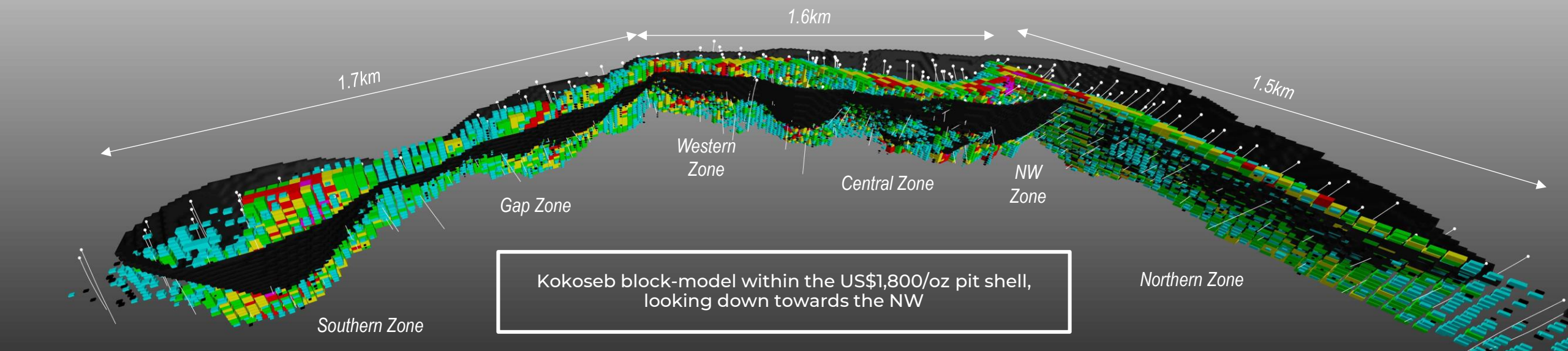
Plus 90% gold recoveries under conventional process coupled with solid MIK MRE

- MRE covers cumulative 4.8km strike and maximum depth of approx. 370m
- Outcropping mineralisation, with max. of 2m cover
- Average weathering depth of ~30m
- **Metallurgical testwork concluded gold recoveries of 92%¹**
- Complete sample leach testing; target grind of P80 75µm followed by gravity recovery and direct cyanidation leach
- Leach kinetics were rapid with majority of gold leaching in 2 - 4 hours



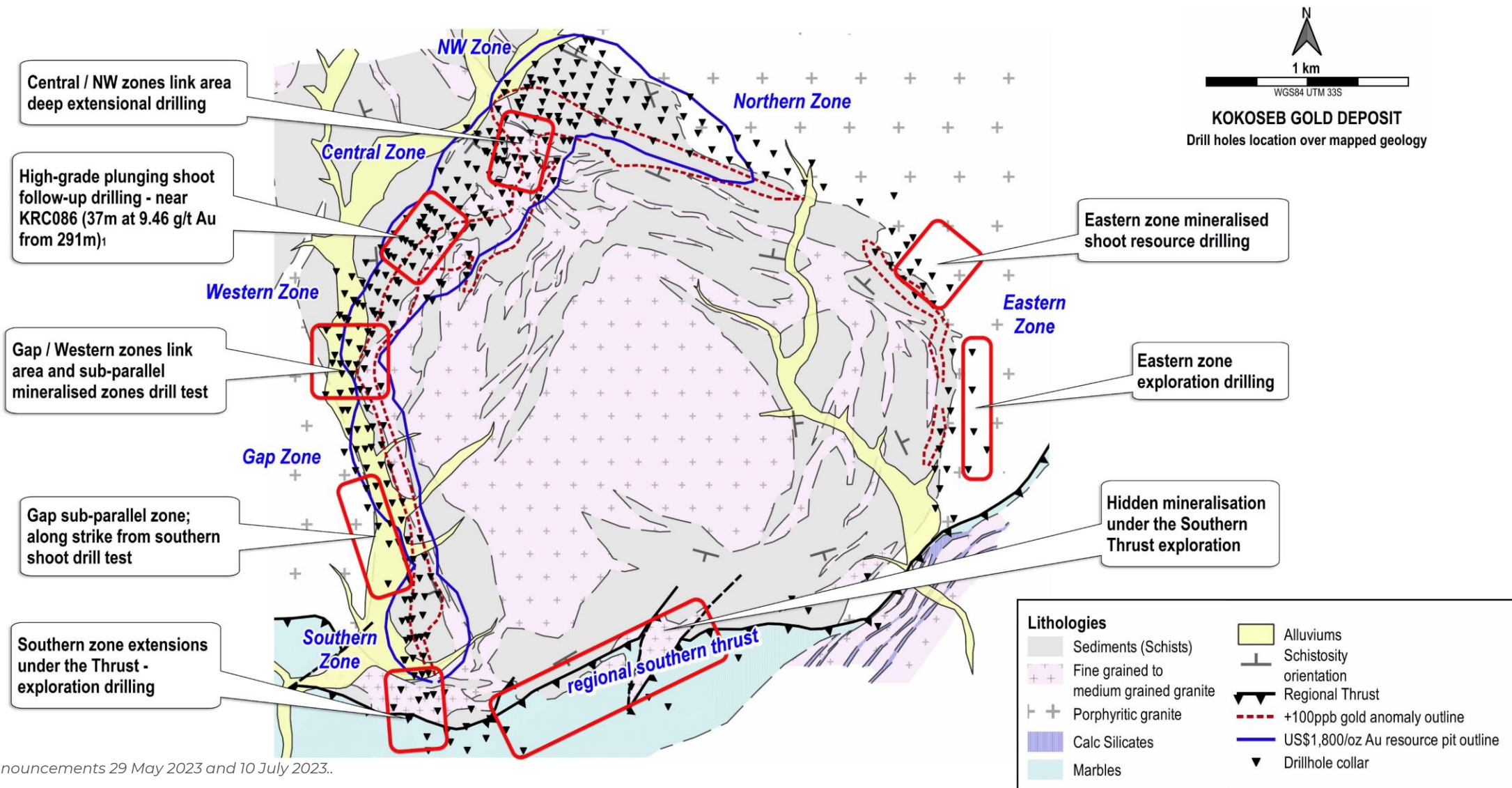
¹. Refer to Appendix A and E, and ASX announcement 16 April 2024. WIA confirms that it is not aware of any new information or data that materially affects the information included in those releases. All material assumptions and technical parameters underpinning those releases continues to apply and has not materially changed.

Continuous pit shell along 4.8km strike



Kokoseb – target MRE uplift

Multi rig scenario rapidly proving extent of scale at Kokoseb - open along strike and at depth

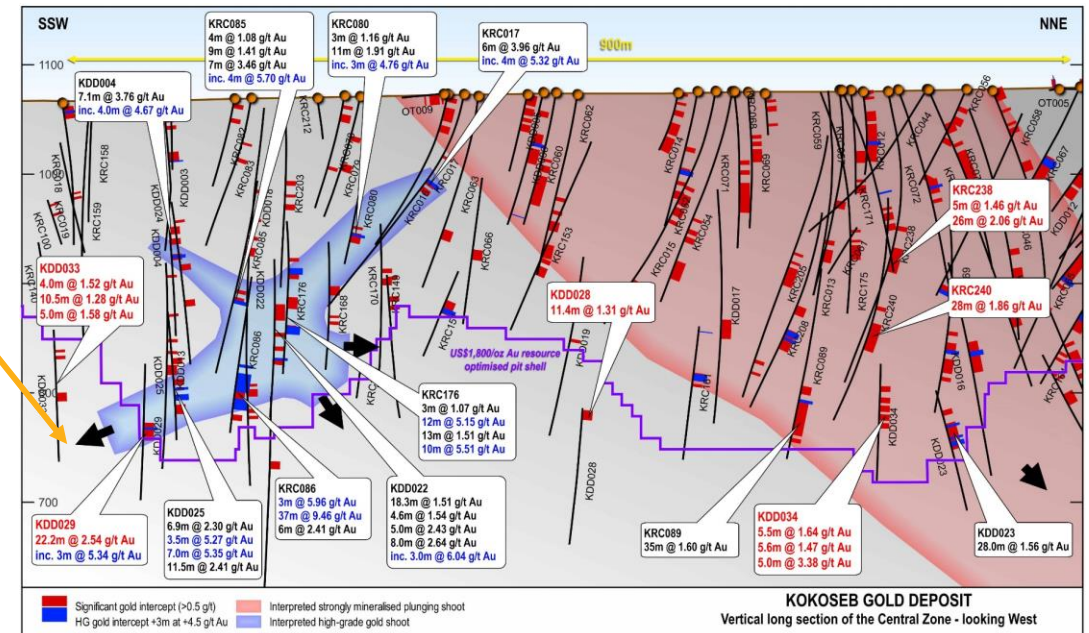


1. Refer to ASX announcements 29 May 2023 and 10 July 2023..

Kokoseb – target MRE uplift

Rapidly proving extent of scale at Kokoseb – upside shallow along strike & high grade deeper in the ore body

- Mineralisation extended at the Central Zone
 - High-grade shoots continue with significant intercepts:
 - 22.2m at 2.54 g/t Au in KDD029
 - Internal higher-grade interval of 3.0m at 5.34 g/t Au
 - Infill/complementary drilling was completed at several zones of the MRE area
 - 20.9m at 1.53 g/t Au in KDD031
 - 5.0m at 3.38 g/t Au in KDD034
 - 26m at 2.06 g/t Au in KRC238
- Extensional drilling at the Southern and Gap Zones
 - 10m at 1.21 g/t Au in KRC244
 - 12m at 1.26 g/t Au in KRC221
- Drilling focused on extensions of the MRE
 - 7.7m at 1.70 g/t Au from 254.2m in KDD027
 - 5m at 2.47 g/t Au from 84m in KRC218
- Eastern Zone delivers a new mineralised shoot
 - Initial drilling in the Eastern Zone has intersected a new mineralised shoot from shallow drilling
 - 7m at 1.29 g/t Au in KRC245
 - 26m at 1.08 g/t Au in KRC246
 - Opportunity:** The Eastern Zone is not included in the existing MRE, however from its surface signature, represents at least 1.3km of known gold mineralisation



Côte d'Ivoire

Côte d'Ivoire project portfolio

Strategically located blocks

A. Mankono Project

Mankono Quest permit granted, five additional permits under application. **Two extensive gold anomalies defined**¹

B. Bouaflé Project

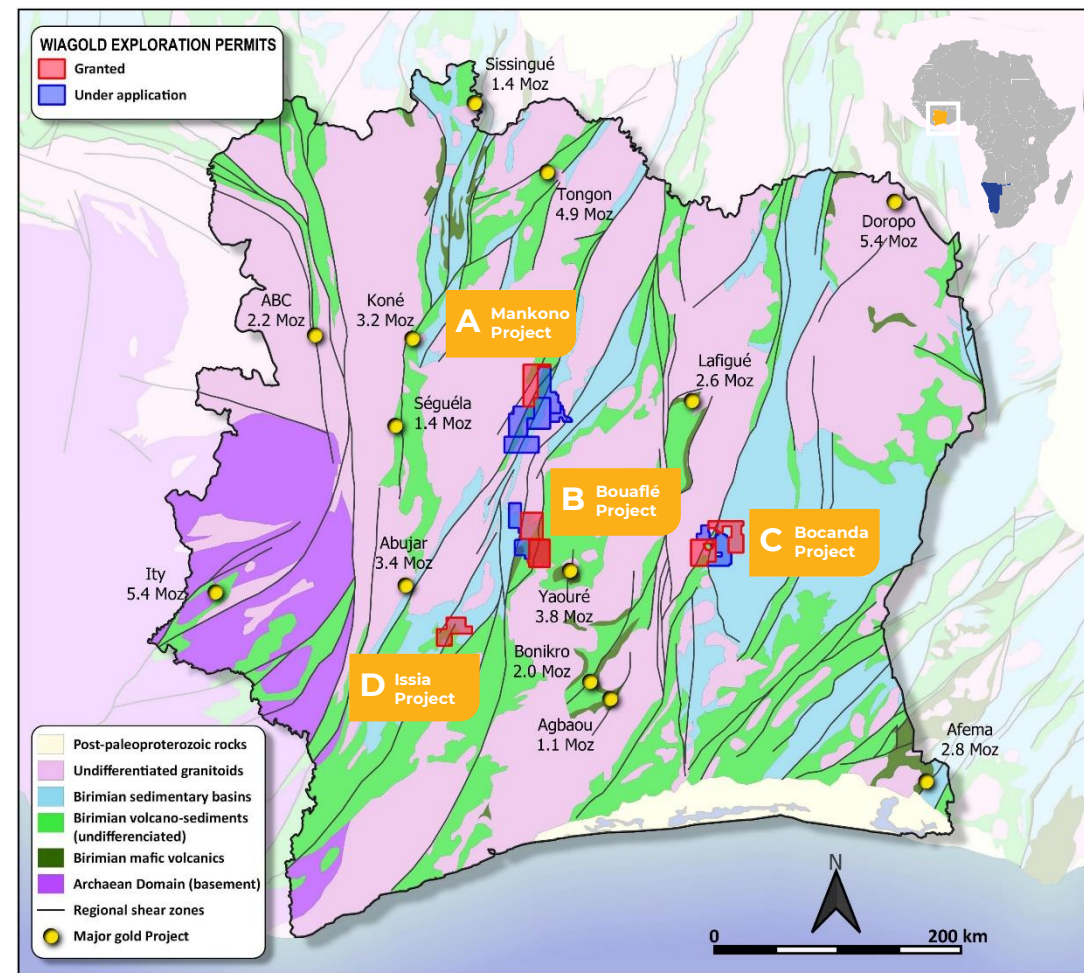
Bouaflé Sud and Bouaflé Nord permits granted, plus additional application. **Significant +17km mineralised shear zone in Bouaflé Sud**², historically underexplored

C. Bocanda Project

Bocanda Nord, Bocanda permit granted. Initial stream sediment sampling across granted permits **identified three large gold targets for follow-up work**³

D. Issia Project

Issia permit granted, plus additional application. **Surface sampling** (soils, gold and multi element assays) **underway**



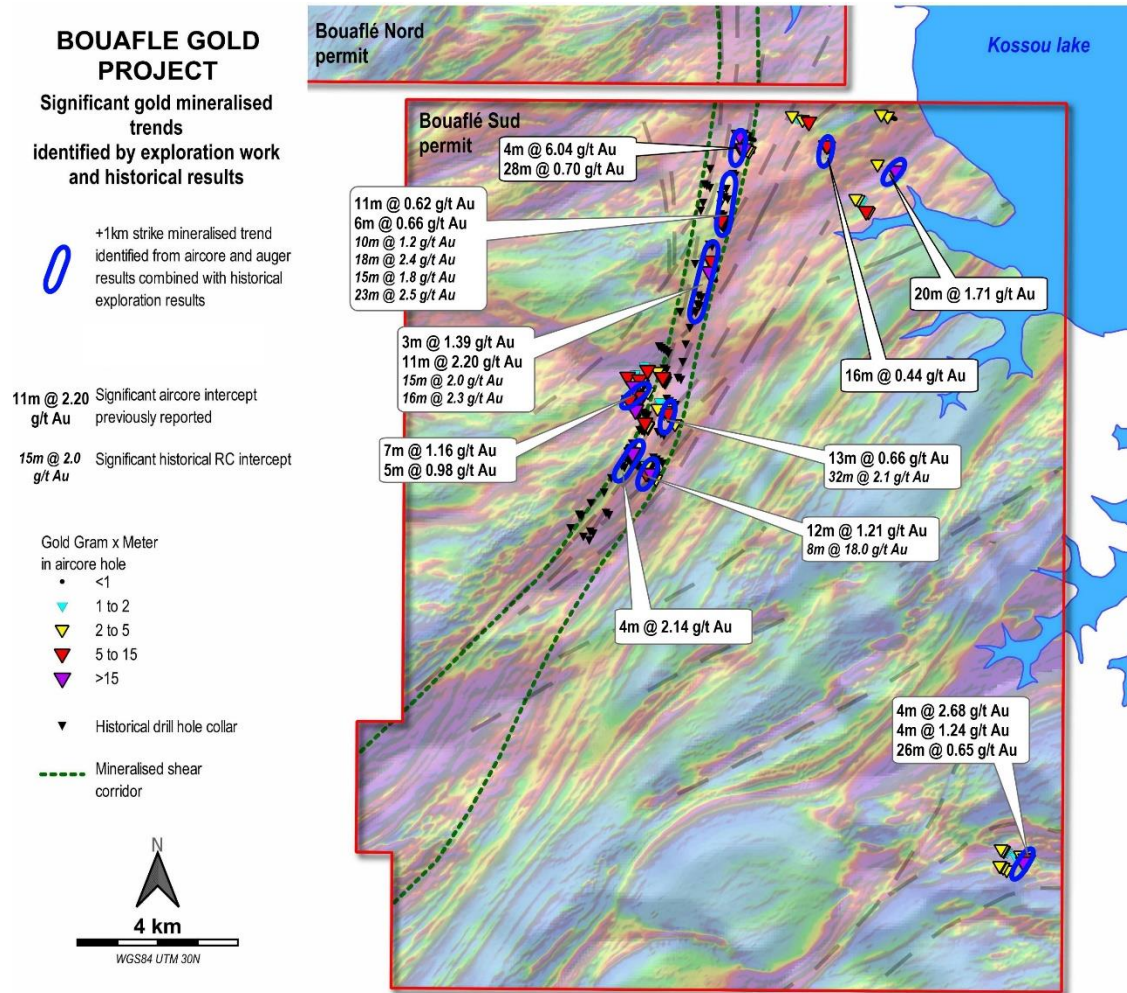
1. ASX announcements 21 September 2021 and 23 November 2021

2. ASX announcement 17 November 2020

3. ASX announcement 30 August 2021

Finding the next Kokoseb – Côte d'Ivoire

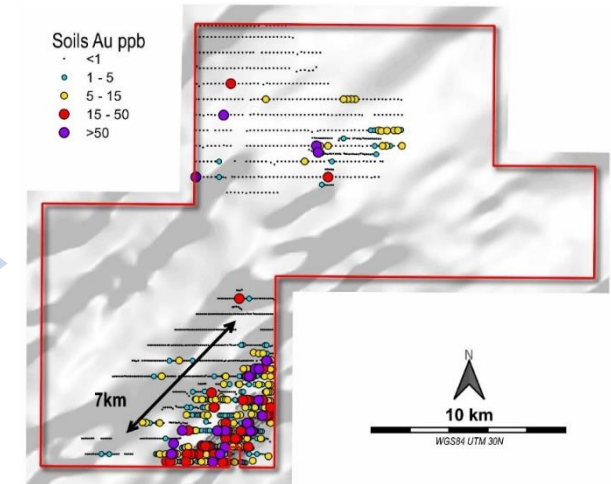
Multiple gold mineralised trends identified at Issia and Bouaflé



10,000m follow-up RC drilling post air core drilling intercepts at the **Bouaflé Project** included:

- 12m at 1.21 g/t Au¹
- 7m at 1.16 g/t Au¹
- 9m at 2.63 g/t Au¹
- 20m at 1.71 g/t Au²
- 4m at 6.04 g/t Au²

New 7km-long strongly anomalous corridor delineated from soil sampling program at the **Issia Project**



1. Refer ASX announcements dated 29 September 2022 and 22 January 2024 for information on the results shown for the Bouaflé Project.
2. Refer ASX announcement dated 8 November 2023 for information on the results shown for the Issia Project.



STRATEGY

Harness value from current asset portfolio

Expand and improve existing resource base in Namibia

Namibia

- Objective of making multi-discoveries and being a multi-goldmine operator in Namibia
- Continue to expand and improve the 2.12m oz Kokoseb discovery
- Continue strategy of low-cost exploration in a proven but underexplored gold district

Côte d'Ivoire

- 10,000m drilling programme underway to prove up potential for a maiden mineral resource at Bouaflé
- Mankono and Issia significant anomalies to be followed-up by test drilling after rainy season





WIA GOLD

INVESTMENT HIGHLIGHTS

WIA: ASX



Transformational
Kokoseb gold
discovery

Updated MRE 2.12 Moz at
1.0 g/t Au with super low
<US\$3/oz definition cost



Growth drilling to
drive substantial
targeted MRE uplift

Aggressive further
growth drilling
delivering strike and
depth success



Straightforward
metallurgy and
process route

Preliminary met
testwork delivers
over 91% gold
recoveries



Established, well
recognised mining
jurisdiction

Stable jurisdiction,
excellent infrastructure
attracting significant
investment capital



Strategic
exploration
project pipeline

Four permitted
prospect areas in
Côte d'Ivoire with
drill-ready targets

Contact details

Level One

130 Hay Street, Subiaco
WA 6009 Australia

E: info@wiagold.com.au

E: WIA@buchanancomms.co.uk

Investor Relations/Media enquiries



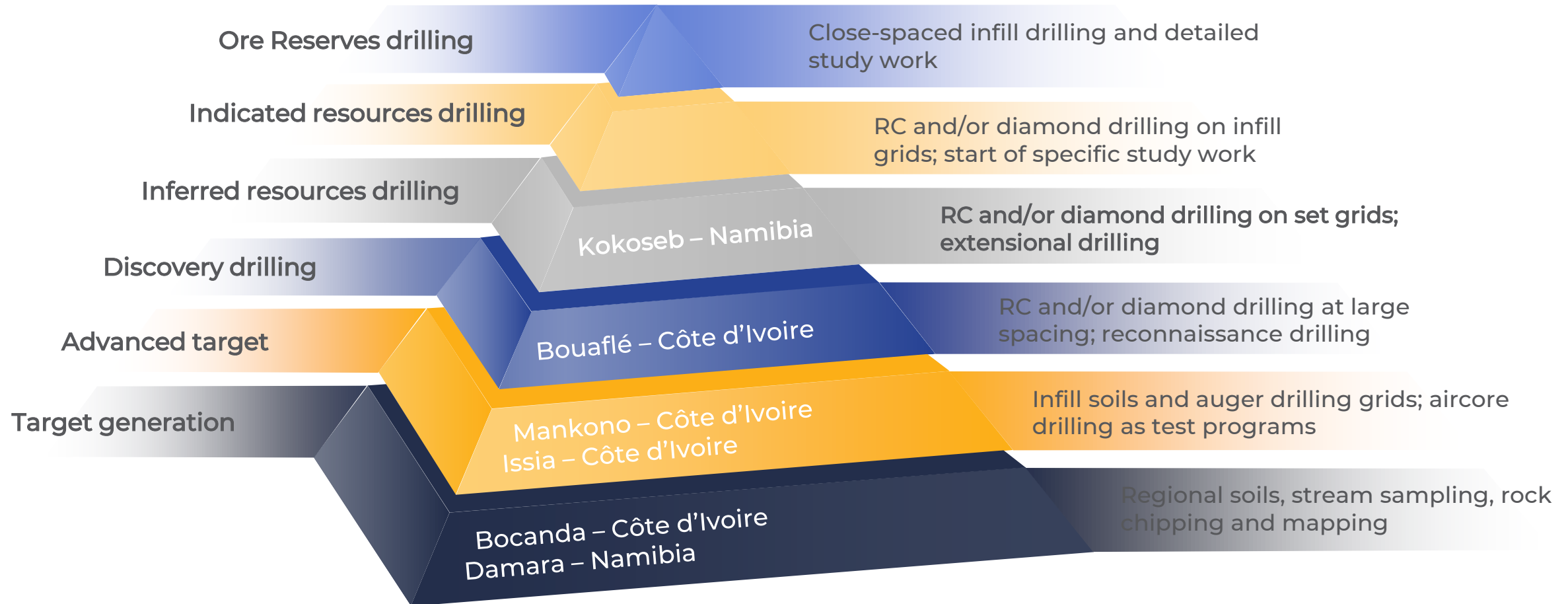
Appendix



Appendix A

Strategic exploration pipeline

A portfolio of high-quality projects at various stages on the advancement horizon



Appendix B

Kokoseb MRE April 2024

Cut off (Au g/t)	Tonnes (Mt)	Au (g/t)	Au (Moz)
0.20	130	0.69	2.88
0.25	115	0.75	2.77
0.30	100	0.80	2.57
0.40	83	0.91	2.43
0.50	66	1.0	2.12
0.60	53	1.2	2.04
0.80	34	1.4	1.53
1.00	23	1.7	1.26

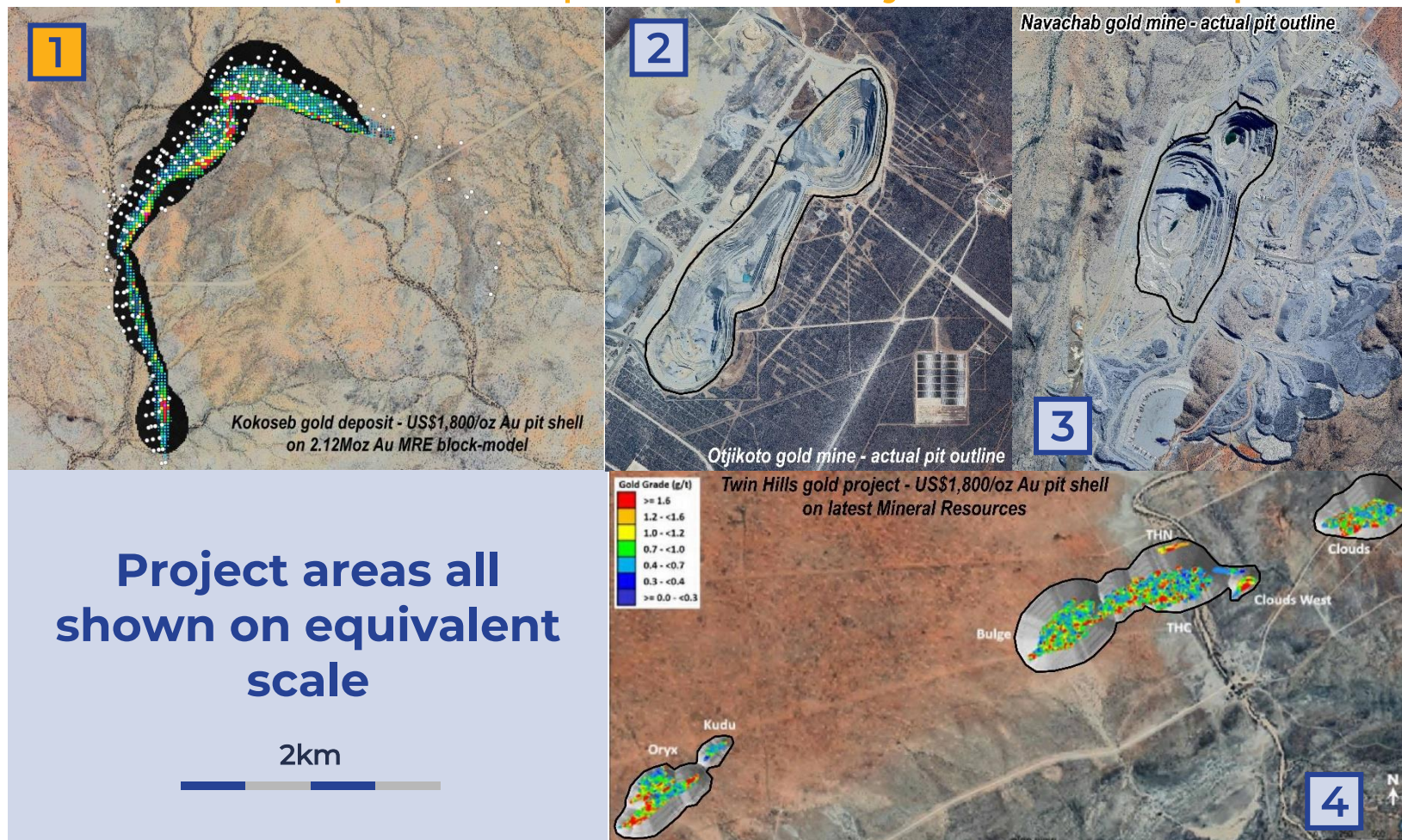


1. Refer to ASX announcement 16 April 2024. WIA confirms that it is not aware of any new information or data that materially affects the information included in those releases. All material assumptions and technical parameters underpinning those releases continues to apply and has not materially changed.

Appendix C

A very large mineralised system

Kokoseb footprint comparable to major Namibian operating gold mines and projects



Project areas all shown on equivalent scale

1 Kokoseb/Wia Gold:
2.12 Moz at 1.0 g/t Au
(at 0.5 g/t cut-off)¹
Wia Gold

2 Otjikoto/B2Gold:
1.4 Moz at 1.5 g/t Au
(at 0.4 g/t cut-off, within a US\$1,350/oz Au pit shell)²

3 Navachab/QKR:
3.9 Moz Au
(as at 31 December 2013)³

4 Twin Hills/Shanjin (Shandong):
3.1 Moz at 1.1 g/t
(at 0.3 g/t cut-off)⁴

1. ASX announcement 16 April 2024.

2. Refer to NI 43-101 Technical Report – Feasibility Study, dated February 25, 2013, from B2Gold

3. Refer to https://www.sec.gov/Archives/edgar/data/1067428/000120561314000094/aga_sale.pdf (retrieved 29 January 2024)

4. Refer <https://osinoresources.com/projects/twin-hills-discovery/> (retrieved 29 January 2024)

Appendix D

Namibian Assets Joint Venture Terms

Joint Venture Parties

Epangelo Mining Company (includes the Kokoseb Gold Discovery) and Kongom Group¹

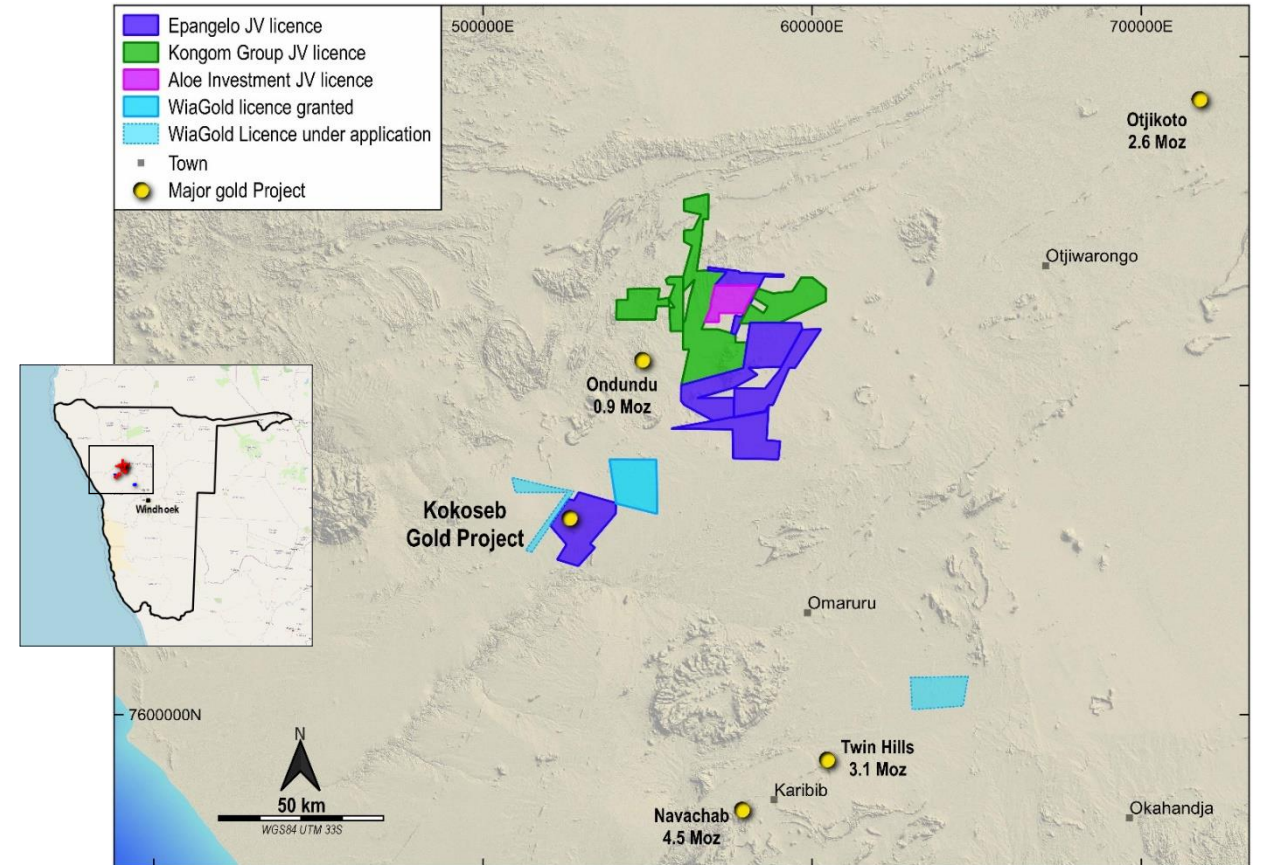
Stage 1 and Stage 2 (complete)

WIA earns 80% interest in Epangelo Licences

Stage 3

Minorities free carried to DFS (Epangelo) or Decision to Mine (Kongom)

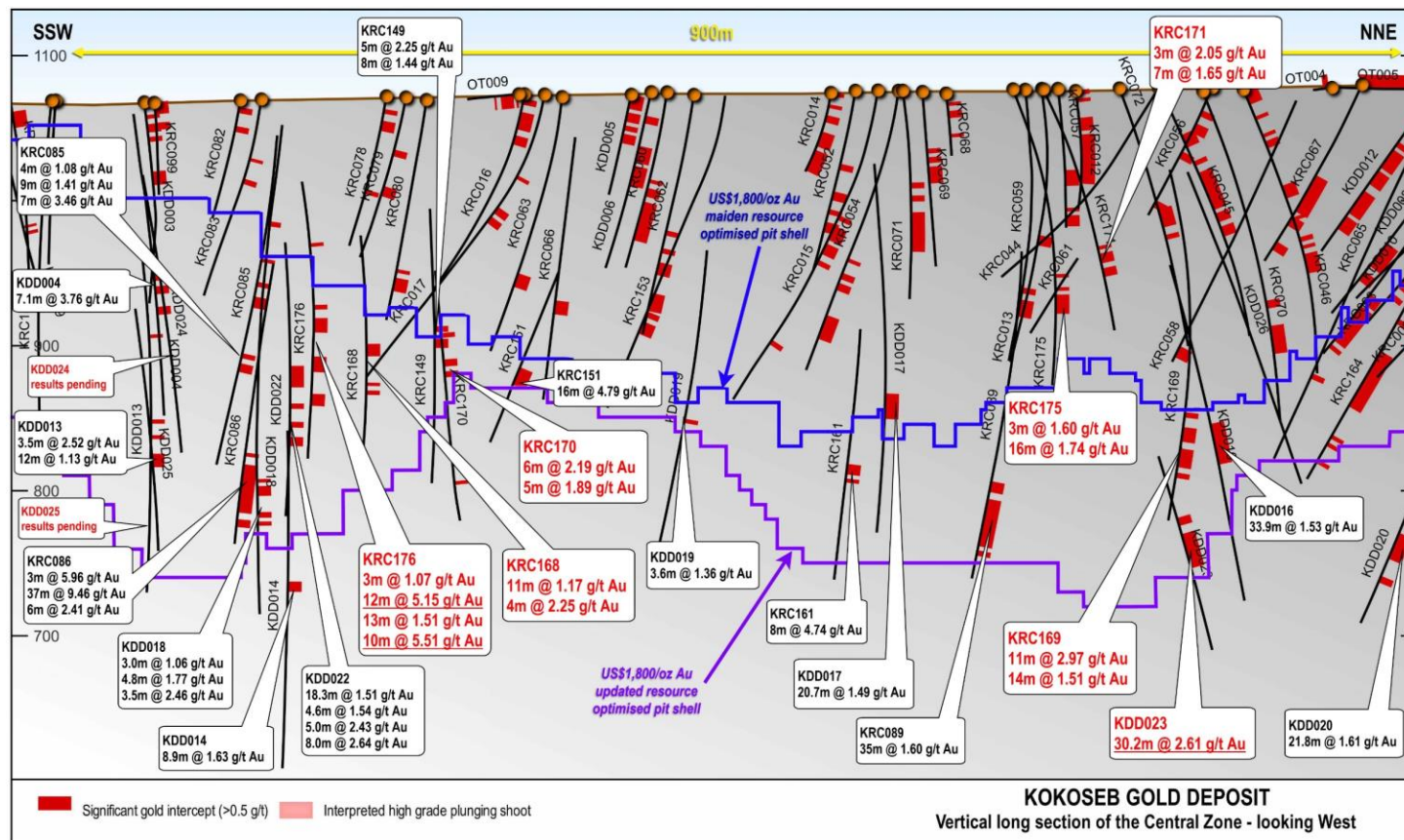
1. Epangelo is a private mining company incorporated into the Republic of Namibia under the Companies Act (Act 61 of 1972). The Government of the Republic of Namibia is the sole shareholder. The company was declared as a state-owned enterprise in 2013 under the PEGA (Act 2 of 2006)



Appendix E

Significant high-grade results at Central Zone

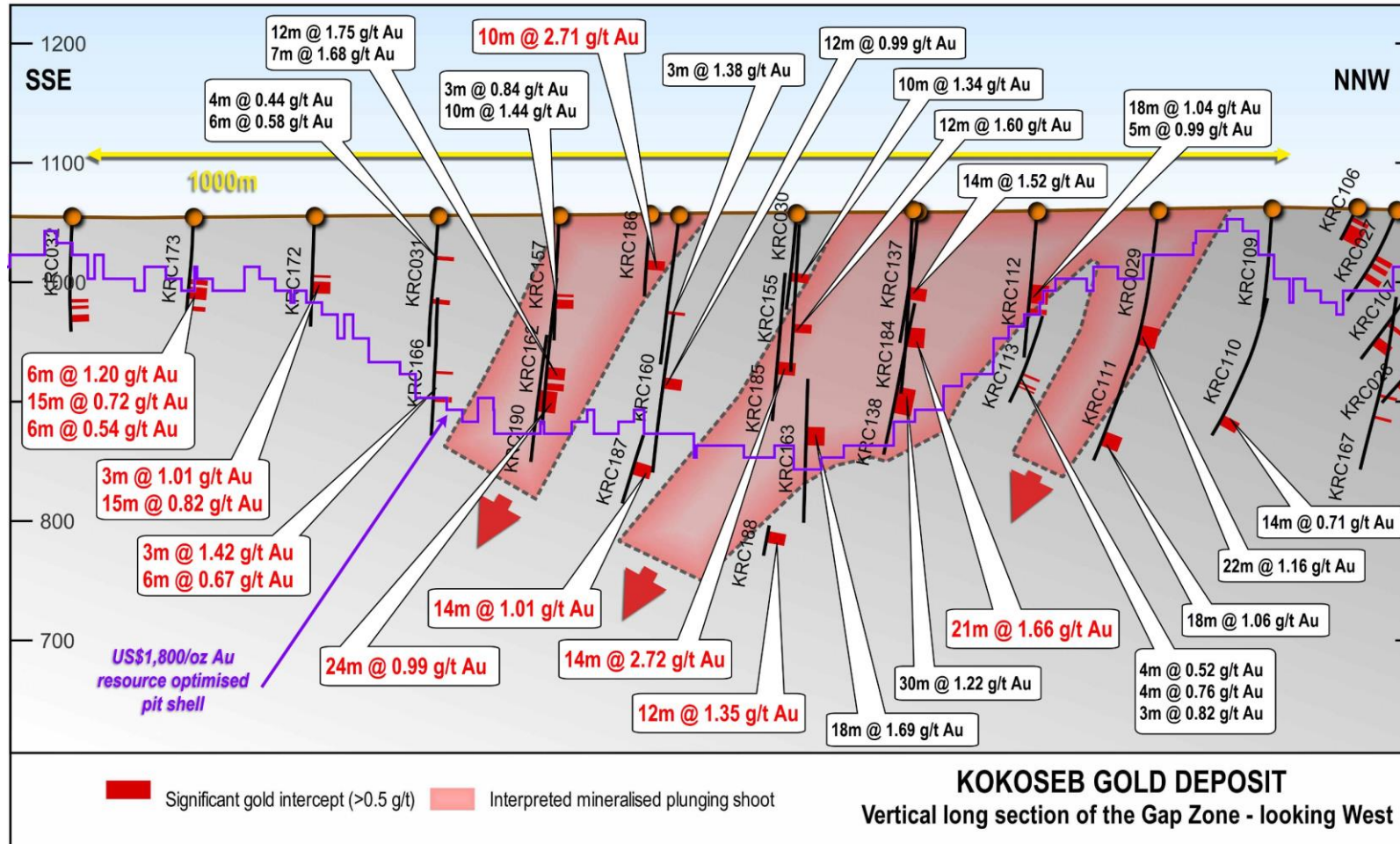
Optimised pit shell constrained by drilling at depth



- Intercepts including samples at over 10 g/t Au have extended the resource model at depth from maiden MRE
- High-grade area around KRC086 still open with results pending from KDD024 and KDD025 and further drilling underway to strengthen interpretations
- Latest significant intercepts include¹:
 - 12m at 5.15 g/t Au
 - 10m at 5.51 g/t Au
 - 30.2m at 2.61 g/t Au

Appendix F

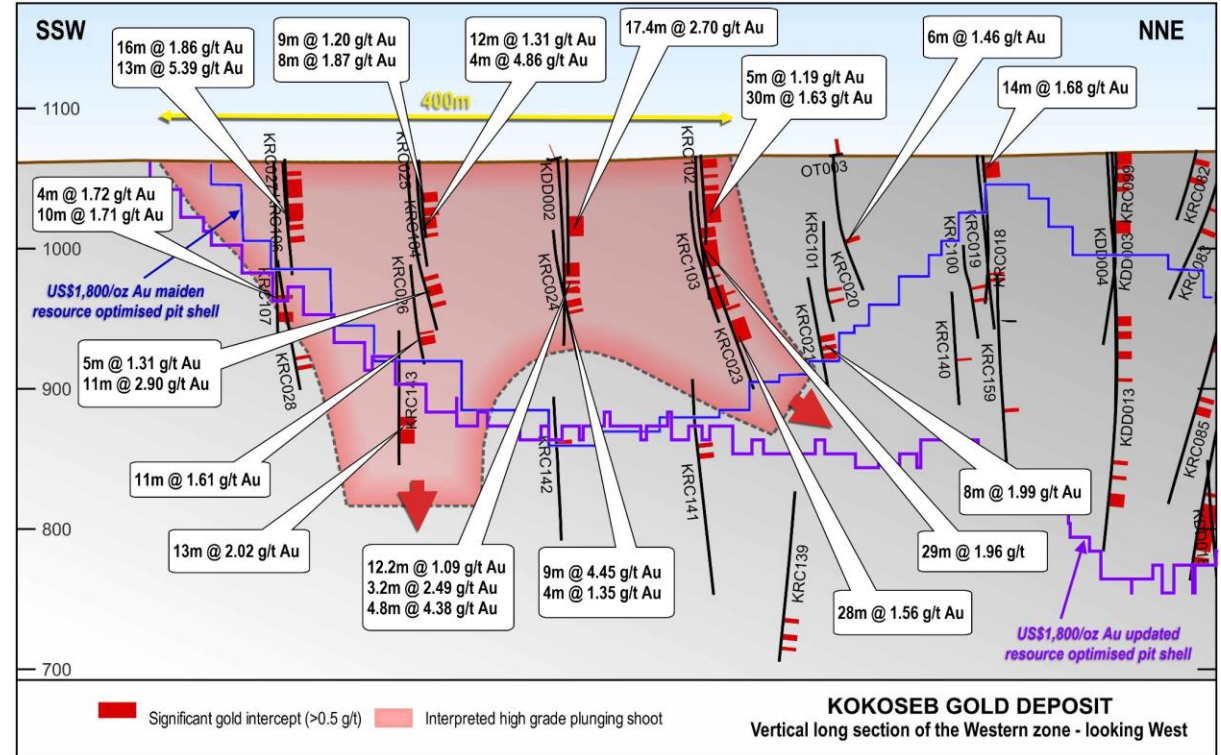
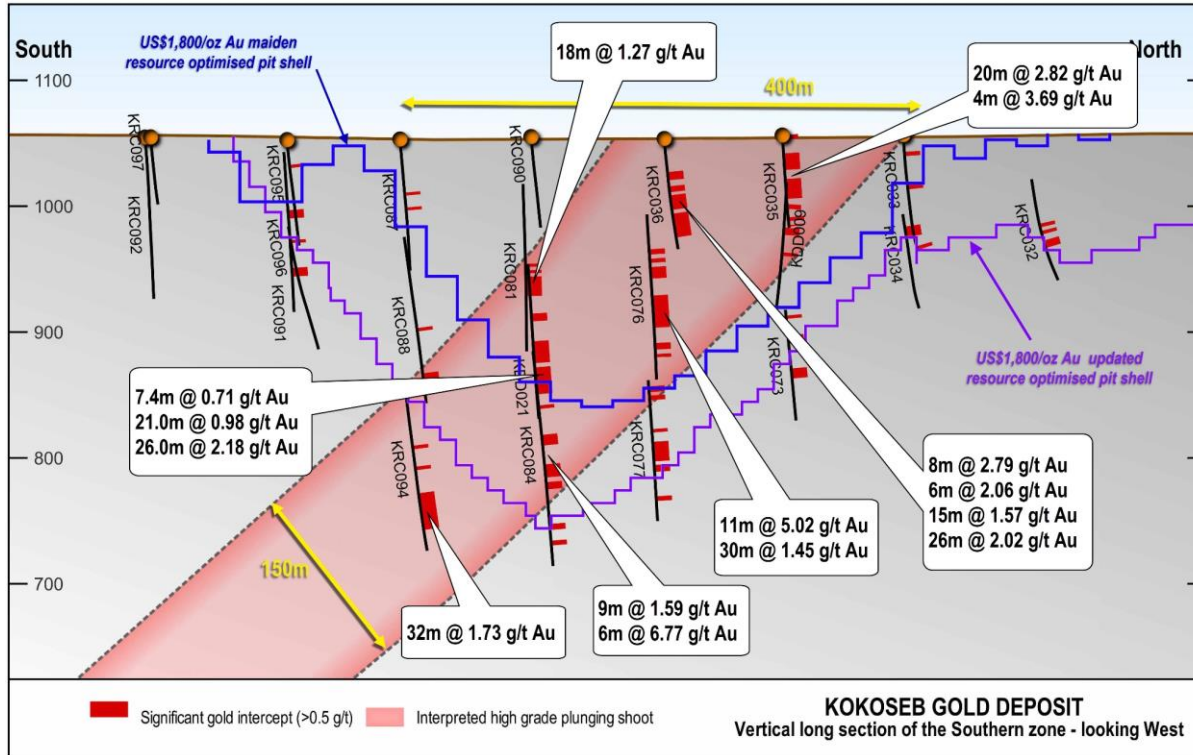
Drill results at the Gap Zone



- Latest drill results (included in the MRE) returned RC drill sample splits above 10 g/t Au within the following significant intercepts¹:
 - 14m at 2.72 g/t Au
 - 10m at 2.71 g/t Au
- Several strongly mineralised shoots are highlighted, completely open at depth

1. Refer to ASX announcement 5 February 2024 for latest results – labelled in red on the long section above; intercepts in black on the map were previously reported.

Southern and Western Zones long sections



- Coherent mineralised shoots repeating along strike, e.g. Southern¹ and Western Zones²
- Mineralisation wide open along strike and at depth

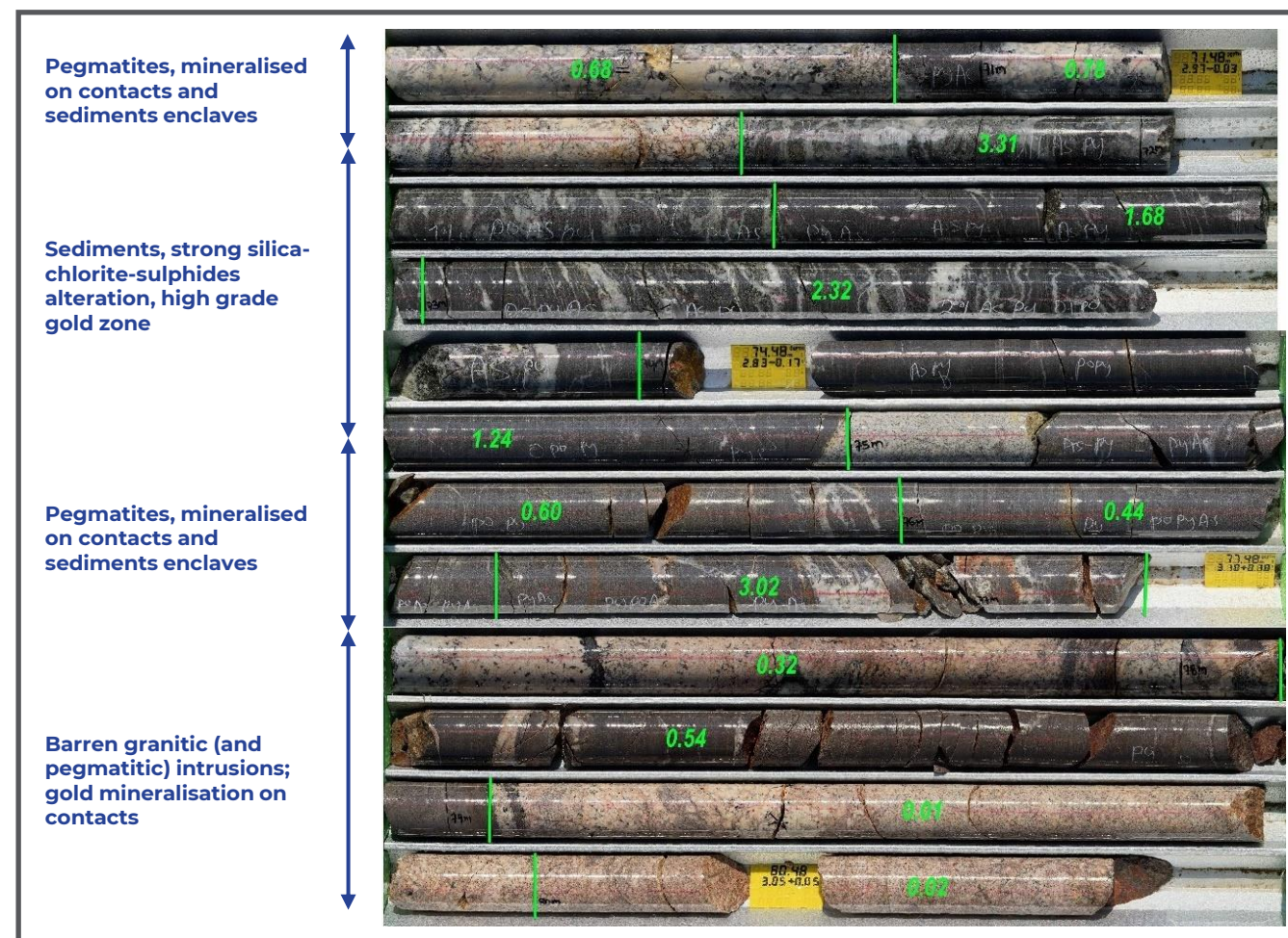
1. Results from the Southern Zone, refer to ASX announcements dated 17 August 2022, 14 December 2022, 15 May 2023, 29 May 2023 and 12 March 2024

2. Results from the Western Zone, refer to ASX announcements dated 7 June 2022, 27 July 2022, 14 December 2022, 15 May 2023, 10 July 2023 and 13 December 2023

Appendix H

Straightforward metallurgy and process

- Metallurgical test work completed on two samples composited from RC bulk samples in fresh sulphide material¹
- **Gold recoveries concluded 92%**
- Complete sample leach testing, target grind of P80 75µm followed by gravity recovery and direct cyanidation leaching
- Leach kinetics were rapid with majority of gold leaching in 2 to 4 hours
- Further metallurgical test work to be conducted on core samples on oxide, low-grade, medium-grade and deep fresh material, **with results expected H2 2024**



1. ASX announcement 16 April 2024

KDD012: drill core from 70.5m to 80.5m depth; typical geological settings and mineralisation style; gold grades in g/t. Refer ASX announcement 17 August 2022 for information on drillhole KDD012

Appendix I

Côte d'Ivoire Joint Venture Terms

Joint Venture Parties	Predictive Discovery (ASX:PDI) and West African Venture Investments (WAVI)
------------------------------	--

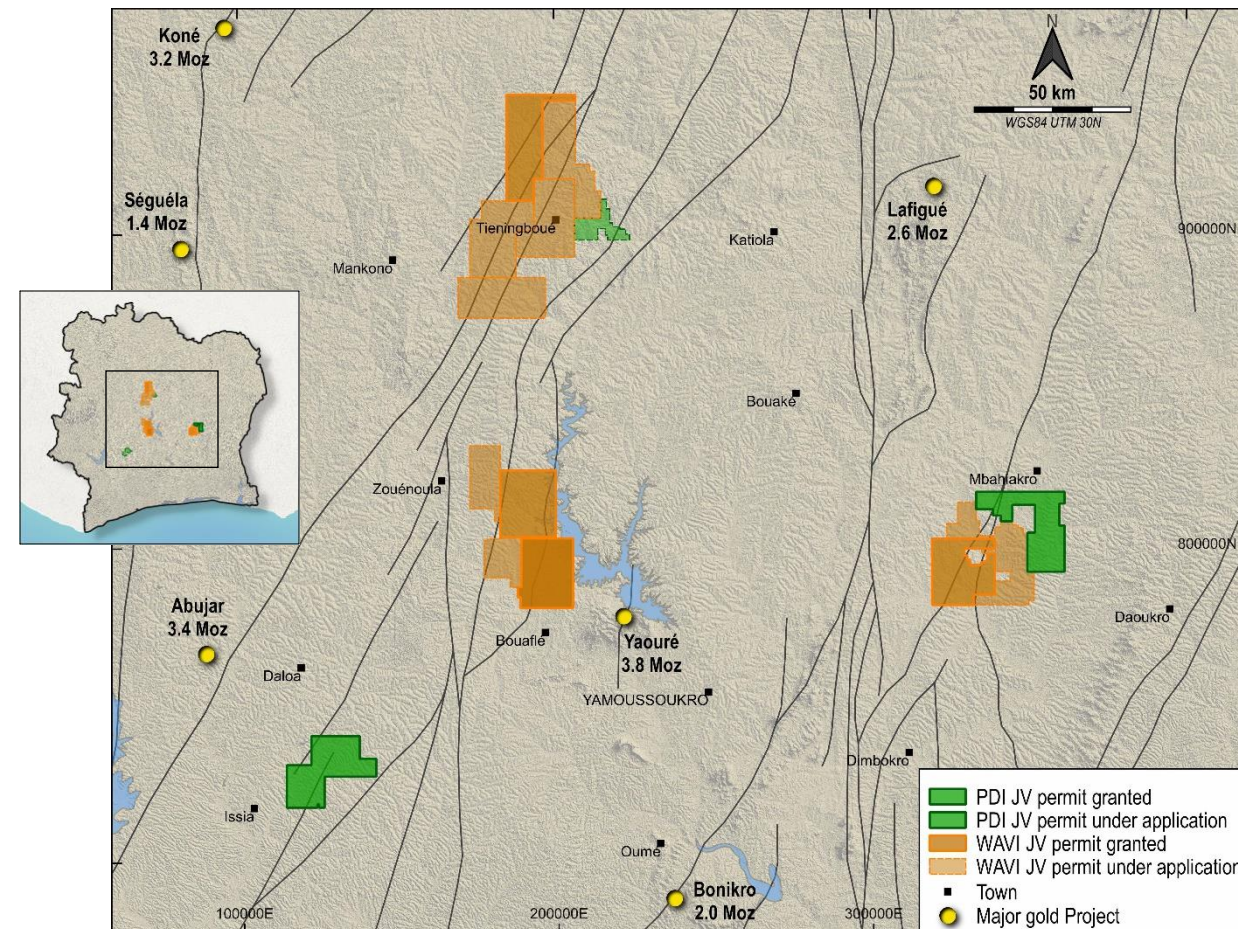
Stage payments	A\$150k upon granting of exploration licences
-----------------------	---

Stage 1	Earn 80% Joint Venture interest by meeting minimum expenditure commitments on licences for 12 months
----------------	--

Stage 2	Continue sole funding JV until Pre-Feasibility Study (PFS) and granting of Mining Lease
----------------	---

Stage 3	Minority shareholder to contribute or dilute (standard dilution formula)
----------------	--

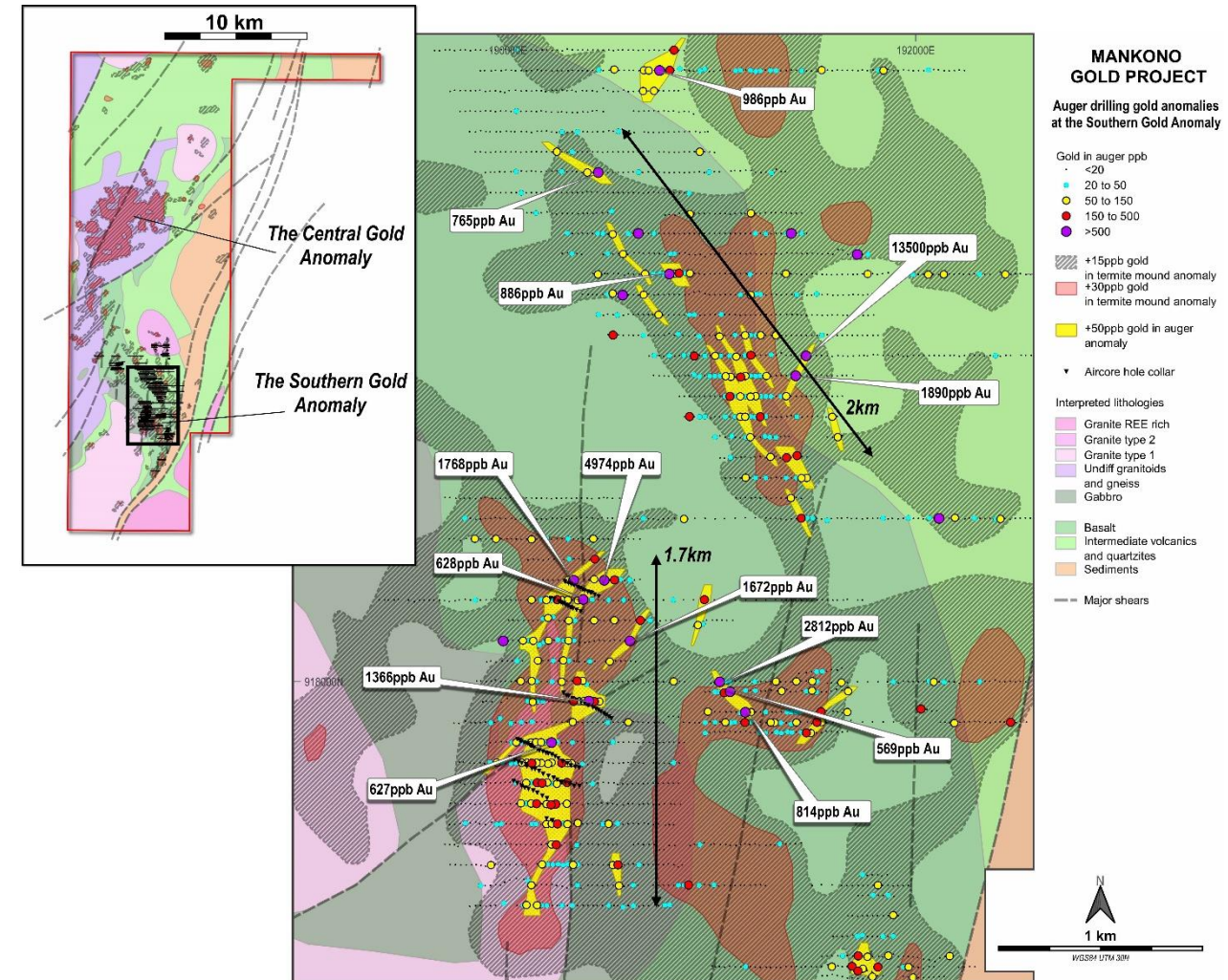
Minimum Joint Venture interest	If Joint Venture interest falls below 10%, convert to 2% NSR
---------------------------------------	--



Appendix J

Mankono Project, Côte d'Ivoire

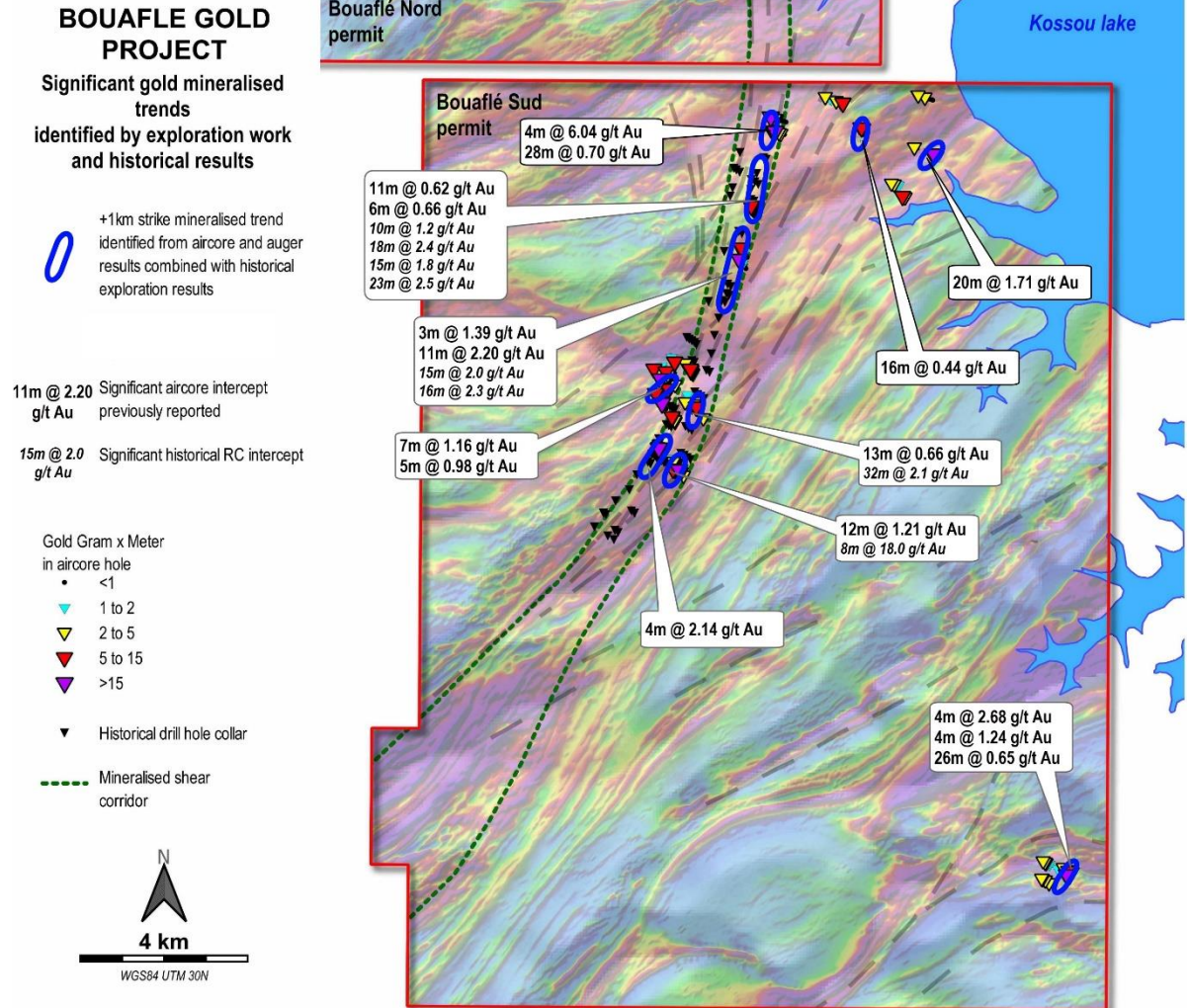
- **Mankono Quest permit granted**, five additional permits under application
- Area encompasses several major regional shears of the Banfora-Dalona greenstone belt **over >75km of strike**
- Along strike of the Abuhar gold Project and (Tietto Minerals) and the Napié gold Project (Mako Gold)
- **Two extensive gold anomalies defined¹**
- First set of auger infill results returned a north-south 1.7km striking, 250m wide, strong and coherent gold anomaly which includes peak values up to 4.97 g/t Au²
- Favourable geological context, a contact zone between the mafic volcanics and a granite



Appendix K

Bouaflé Project, Côte d'Ivoire

- **Bouaflé Sud and Bouaflé Nord permits granted**, with one additional under application
- Bouaflé Sud is located 35km from the Yaouré gold mine (1.6Moz at 1.8 g/t gold¹, Perseus)
- **Significant +17km mineralised shear zone** in Bouaflé Sud¹, historically underexplored
- Several large surface gold anomalies tested in recent exploration program consisting of 142 AC drill holes for 5,582m, with key mineralised intercepts that included²:
 - **20m at 1.71 g/t Au from 16m in BFAC0318**
 - **4m at 6.04 g/t Au from 10m in BFAC0283**
 - **28m at 0.70 g/t Au from 22m in BFAC0254**
- Ten strong mineralised trends of +1km strike each now identified, with planning underway for follow-up drill programs to test these areas.



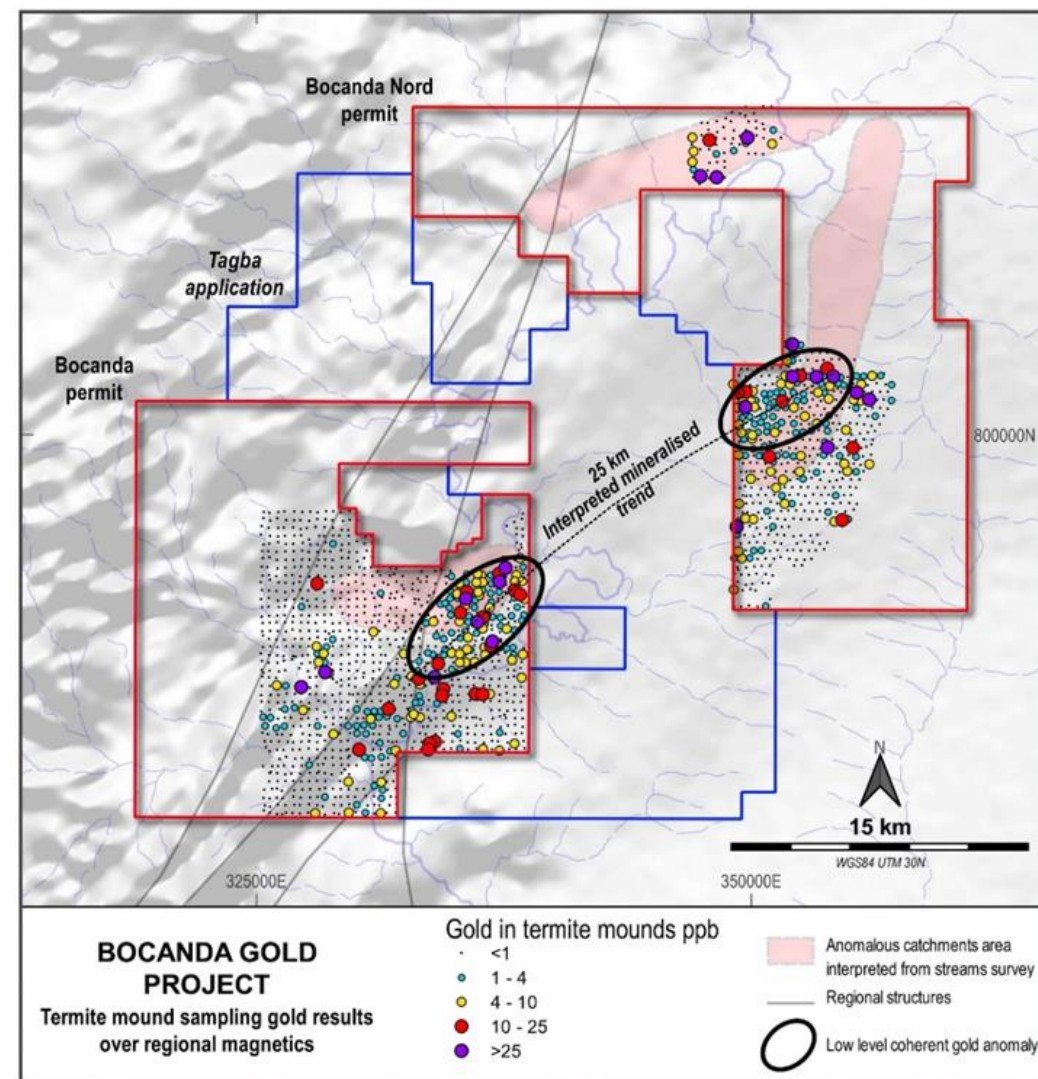
1. Refer to ASX announcement 17 November 2020

2. Refer to ASX announcement 22 January 2024

Appendix L

Bocanda Project, Côte d'Ivoire

- **Bocanda Nord, Bocanda permit granted**
- Bocanda Permits located on the Ouango-Fitini shear system, which is the southern extension of the Houndé greenstone belt in Burkina Faso
- Initial stream sediment sampling across the Bocanda granted permits identified three large gold targets for follow-up work¹
- Termite mounds sampling has returned two zones of gold anomalism, which are interpreted as being along the same potentially mineralised trend of 25 km strike²
- Follow-up reconnaissance auger program completed in April 2023 with 364m drilled



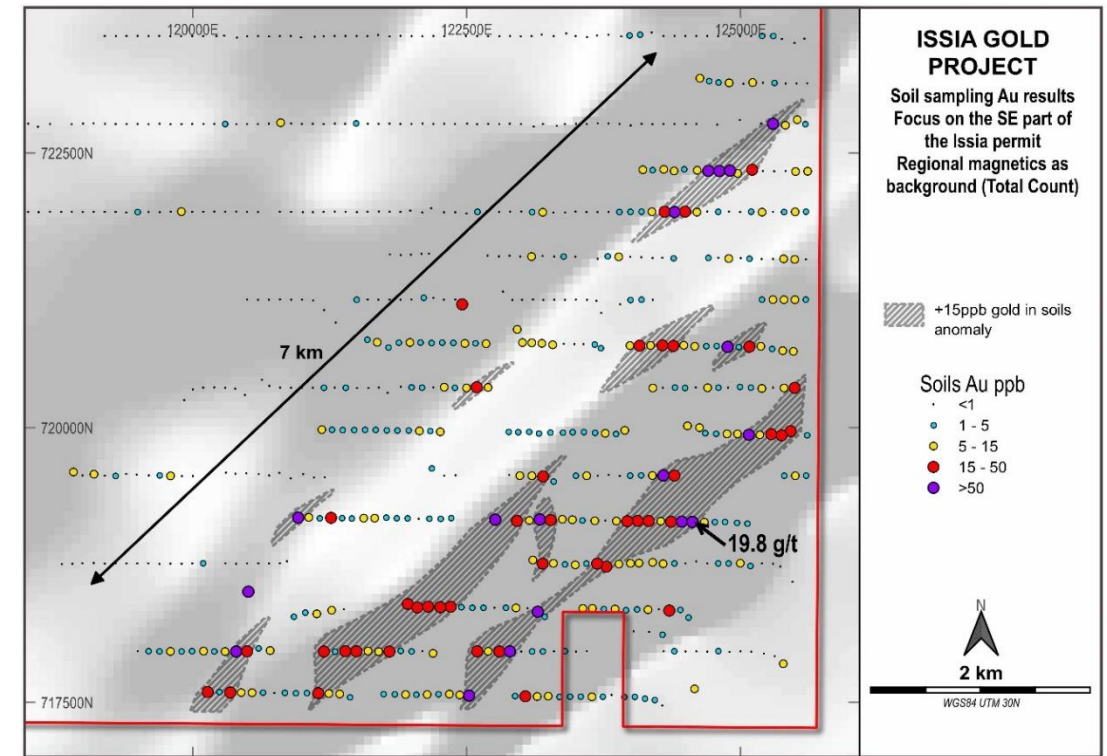
1. Refer ASX announcement 30 August 2021

2. Refer to ASX announcement 29 September 2022

Appendix M

Issia Project, Côte d'Ivoire

- **Issia permit granted**, with one additional permit under application
- Several zones of artisanal gold mining identified along strike and **spodumene rich pegmatites mapped**
- Regional stream sediment sampling survey complete
- Surface sampling grid (soils, gold and multi element assays) complete, with new **7km-long, strongly anomalous gold corridor delineated**¹
- Multiple +15 ppb Au returns and **peak gold-in-soil value of 19.8 g/t Au**¹
- **Two significant lithium anomalies** were also highlighted on the permit from soil and rock chip results, including **peak values of around 500 ppm Li**
- This corridor is set to be tested by an auger drilling program in Q1 2024



1. Refer ASX announcement 8 November 2023.



WIAGOLD