



# RE-RELEASE: GROUND GRAVITY SURVEY COMMISSIONED AT MOUNT HOPE PROJECT

**\*\*This Announcement has been re-released to correct formatting issues in the original release\*\***

Mount Hope Mining Limited (ASX: “MHM” or the “Company”) is pleased to announce it has commissioned a ground gravity survey at its Mount Hope Project to continue to advance the Company's exploration targets in the highly prospective Cobar region of New South Wales. The survey will be conducted by leading geophysical consultants Southern Geoscience and Atlas Geophysics and will play a key role in refining exploration targets within the mineralised corridor at the Mount Hope Project.

## Highlights:

- |  |  |
|--|--|
|  | <b>Defining potential extensions of historic high-grade copper mines</b> – Results will assist in targeting possible extensions of historic high-grade zones, including the <b>Mount Hope Mine (75kt at 10.5% Cu)<sup>(1)</sup></b> .                        |
|  | <b>Comprehensive survey coverage</b> – A 400m x 200m grid will be used to collect high-resolution data across the entire mineralised corridor.   |
|  | <b>Building on extensive geological data</b> – Gravity data will refine drilling targets already identified through historic mining, drilling, soil surveys, and geophysical studies.  |
|  | <b>Target structurally controlled Cu-Au or Pb-Zn-Ag deposits</b> – The survey will help detect potential mineralisation and resolve the structural architecture controlling base metal mineralisation.   |
|  | <b>Key exploration tool for Cobar deposits</b> - Ground gravity surveys have made significant contributions to recent Cobar discoveries, including (but not limited to) Federation (ASX: AMI) <sup>(2)</sup> and Southern Nights (ASX: PEX) <sup>(3)</sup> . |

## Mount Hope Mining Managing Director & CEO Fergus Kiley commented:

*“Historical discoveries and current active mines throughout the Cobar basin have demonstrated the viability of detailed gravity as an effective tool in an explorer's toolkit.*

*“This gravity survey represents an important step in our systematic exploration strategy at Mount Hope. By leveraging these modern geophysical techniques, we aim to better define the structures that control high-grade mineralisation and unlock the project's full potential.*

*“Similar surveys have played a crucial role in uncovering and defining recent significant discoveries in the Cobar region, and we are excited to see how this data, applied to our project area, refines our drill targets moving forward.”*

(1): ASX: MHM announcement 18-Dec-2024 – [Prospectus](#)

(2): Aurelia Metals (ASX: AMI): Mines & Wines Presentation, September 2019

(3): Peel Mining (ASX: PEX): Diggers & Dealers Investor Presentation Aug 2019

## Survey Details:

The gravity survey, which will cover the full extent of the Mount Hope mineralised corridor, will be conducted by Southern Geoscience and Atlas Geophysics using a 400m x 200m station grid, with 1,241 gravity stations planned (Figure 1). The survey will be acquired using Scintrex CG5 or CG6 gravity metres, and data will be processed to Bouguer Anomaly for interpretation.

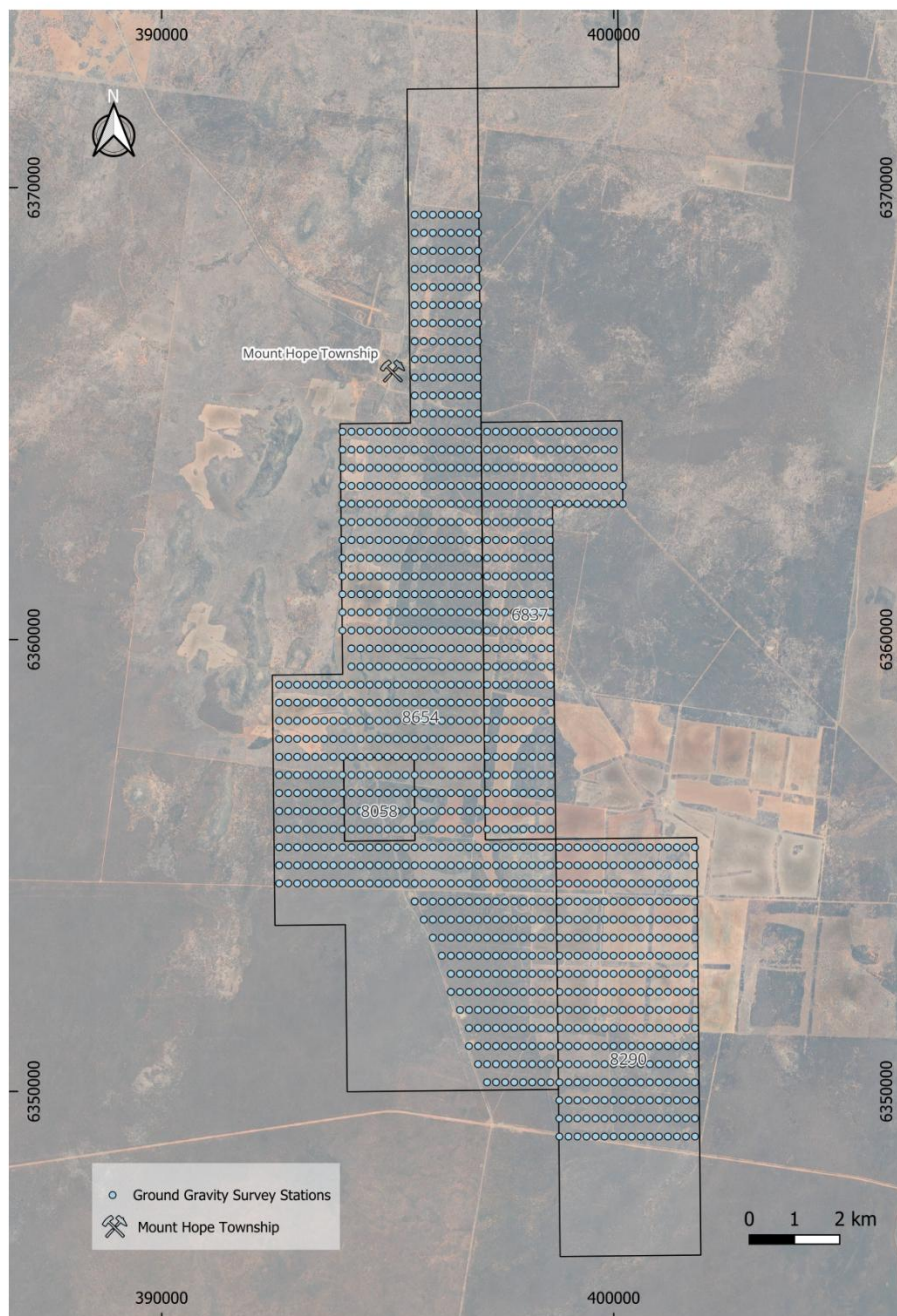


Figure 1: Mt Hope Project ground gravity survey locations

**This announcement is authorised for release to the ASX by the Board.**

Investor and media relations enquiries

Fergus Kiley | Managing Director & CEO  
info@mounthopemining.com.au

Released Thursday 6/03/2025 | GROUND GRAVITY SURVEY COMMISSIONED

By integrating gravity data with existing magnetic, structural, and geochemical datasets, the Company aims to gain a clearer understanding of subsurface structures that control mineralisation, particularly along key fault zones such as the Sugarloaf and Scott's Craig Faults. These structures have been associated with high-grade copper and gold mineralisation, and the survey will help delineate their orientation and potential extensions as the Company works to define final targets for the maiden drill program.

Ground gravity surveys have played a key role in defining major copper and base metal deposits across the Cobar Basin, including Aurelia Metals' (ASX: AMI) Federation deposit<sup>(4)</sup> and Peel Mining's (ASX: PEX) Southern Nights-Wagga Tank deposits<sup>(5)</sup>.

By leveraging this technique, Mount Hope Mining aims to refine existing targets and generate new priority areas for the maiden drill program. The Company is confident that the results from this survey will provide valuable insights to support its exploration strategy moving forward.

## Existing gravity survey data in the Mount Hope Trough:

Existing coverage of ground gravity survey station locations within the approximate location of the Mount Hope Trough in the southern Cobar Basin has been outlined in Figure 2. The blue tenement (EL6837) is the Mt Solitary tenement owned by MHM subsidiary, Fisher Resources. The existing gravity data appears coarse in nature due to the sparsely populated survey stations.

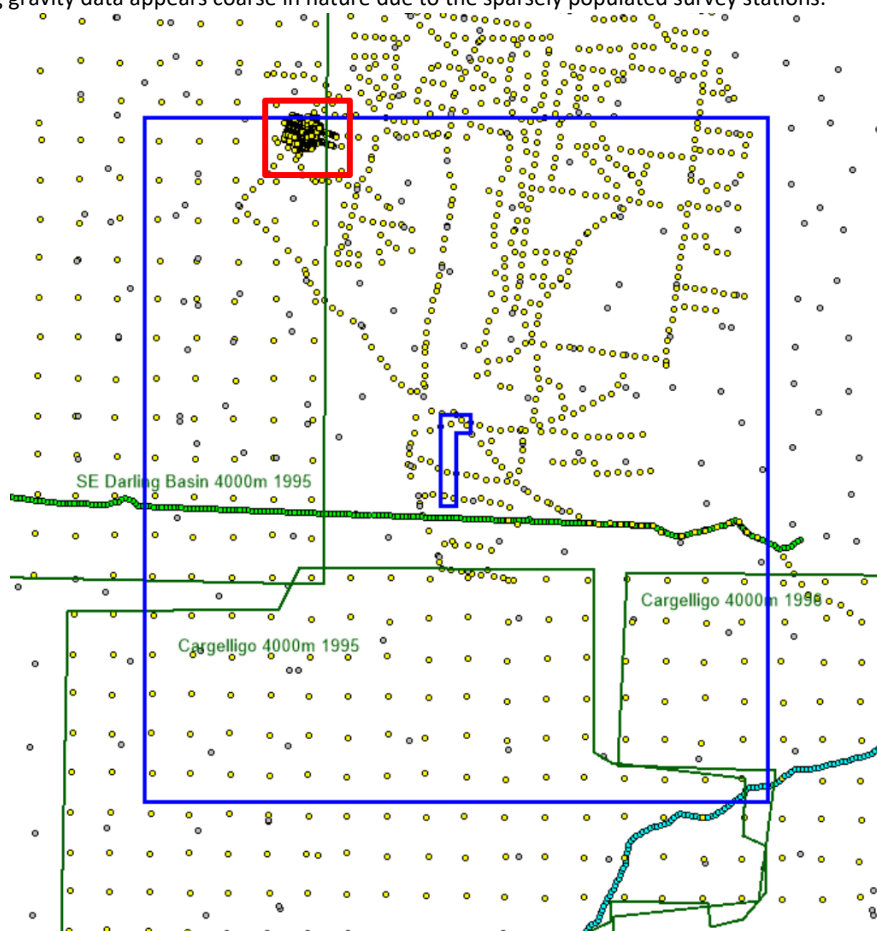


Figure 2: Gravity survey data status at the Mount Hope Project - primarily covered by very coarse 4,000m spaced stations with limited more detailed transects of ~1,000m station spacing

(4): Aurelia Metals (ASX: AMI): Mines & Wines Presentation, September 2019

(5): Peel Mining (ASX: PEX): Diggers & Dealers Investor Presentation Aug 2019

**This announcement is authorised for release to the ASX by the Board.**

Investor and media relations enquiries

Fergus Kiley | Managing Director & CEO  
info@mounthopemining.com.au

Released Thursday 6/03/2025 | GROUND GRAVITY SURVEY COMMISSIONED



The red box illustrated in Figure 2 is the location of the high-grade polymetallic 6.8 Mt Wagga Tank – Southern Nights resource, owned by Peel Mining (ASX: PEX)<sup>(6)</sup>. The map demonstrates the increase in survey density over this area of known mineralisation.

The Wagga Tank – Southern Nights deposit is hosted in the same stratigraphy (The Mount Hope Trough) as the Mount Hope project and represents one of the closest analogue exploration models to follow for the Mount Hope Project. This is further evidence as to the effective nature of gravity surveys for mineral exploration in this jurisdiction and reinforces why the Company has pursued the planning and execution of this work program.

**END**

---

(6) ASX: PEX announcement 9-Jan-2023: [20MT Resource Base for South Cobar Project](#)

**This announcement is authorised for release to the ASX by the Board.**

Investor and media relations enquiries

---

Fergus Kiley | Managing Director & CEO  
info@mounthopemining.com.au

Released Thursday 6/03/2025 | GROUND GRAVITY SURVEY COMMISSIONED

