



# Talisman Deep Project – Napoleon Prospect Northern Carnarvon Basin, Australia

Technical Presentation – June 2021 PESA DEAL DAY

# Disclaimer

This presentation has been prepared by Tamaska Oil and Gas Limited (Company), based on information available as at the date of this presentation. The information in this presentation is provided in summary form and does not contain all information necessary to make an investment decision.

The information contained in this presentation is not investment or financial product advice and is not intended to be used for the basis of making an investment decision. The Company strongly suggests that investors obtain their own advice before making any investment decision.

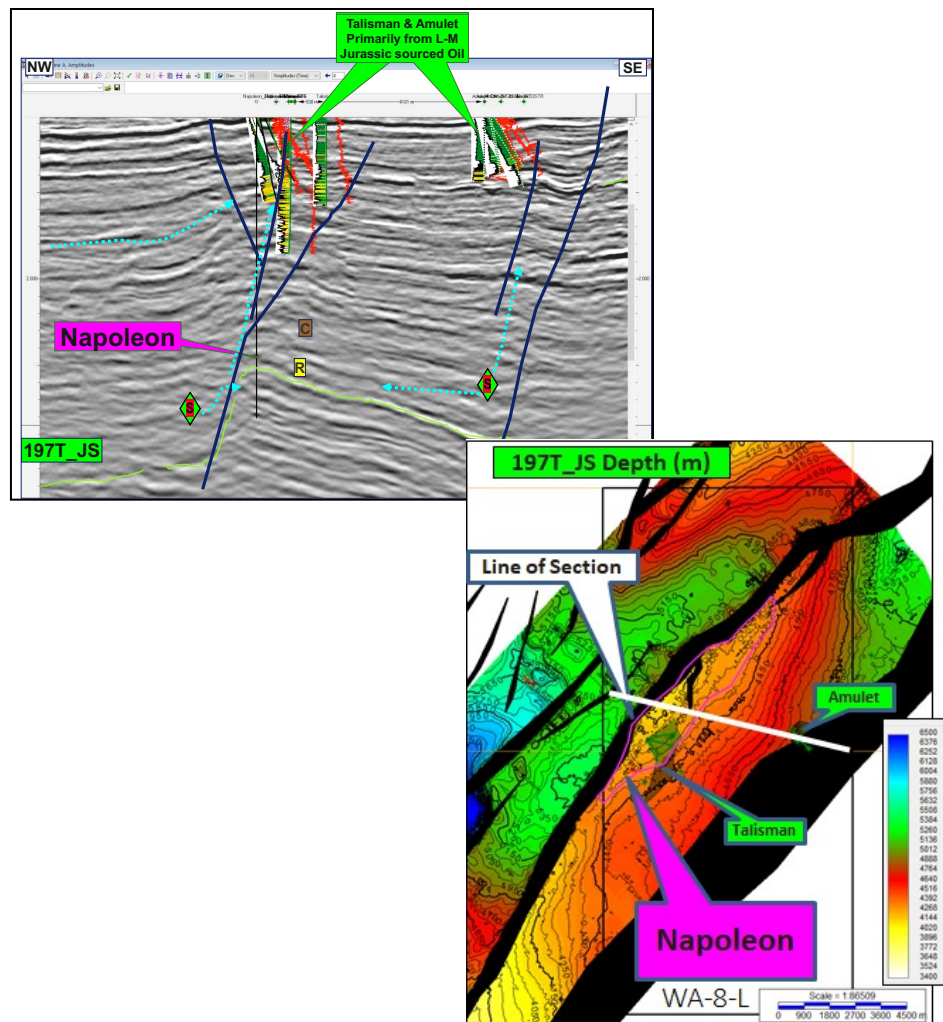
The Company has prepared this document based on information available to it at the time of preparation. No representation or warranty, express or implied, is made as to the fairness, accuracy or completeness of the information, opinions and conclusions contained in this presentation.

To the maximum extent permitted by law, the Company, its related bodies corporate (as that term is defined in the Corporations Act) and the officers, directors, employees, advisers and agents of those entities do not accept any responsibility or liability including, without limitation, any liability arising from fault or negligence on the part of any person, for any loss arising from the use of the presentation or its contents or otherwise arising in connection with it.



# Napoleon

1. Introduction
2. Regional Aspects
3. Structure & Charge
4. Reservoir and Seal
5. Summary

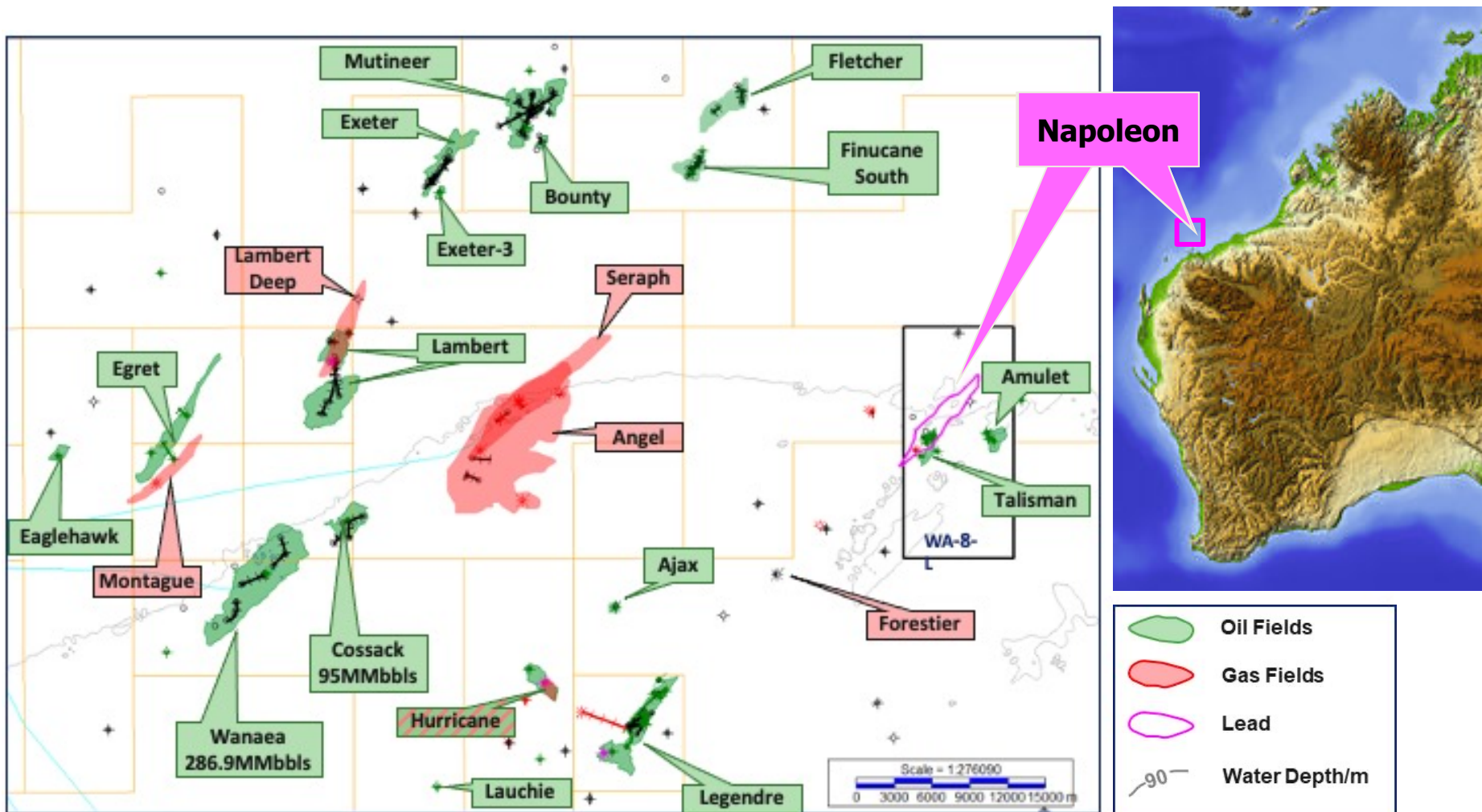


# Napoleon - Introduction

- TMK owns 20% of the Talisman Deep Project, which contains the Napoleon structure
- Located in WA-8-L below Talisman in the Barrow-Dampier Sub-basin
- Simple large structure - 3D pre-SDM reprocessing completed in May 2021
- 80-90m water depth
- Proven productive reservoir (proximal North Rankin and proximal Brigadier Fms) at approx. 4,200m
- Proven reservoir/seal (Murat Siltstone) pair
- Charge – structure located in the liquids rich part of the basin dominated by charge from Lwr-Mid Jurassic.
- Full technical evaluation with independent prospective resource estimate underway – target July 2021

# WA-8-L Location

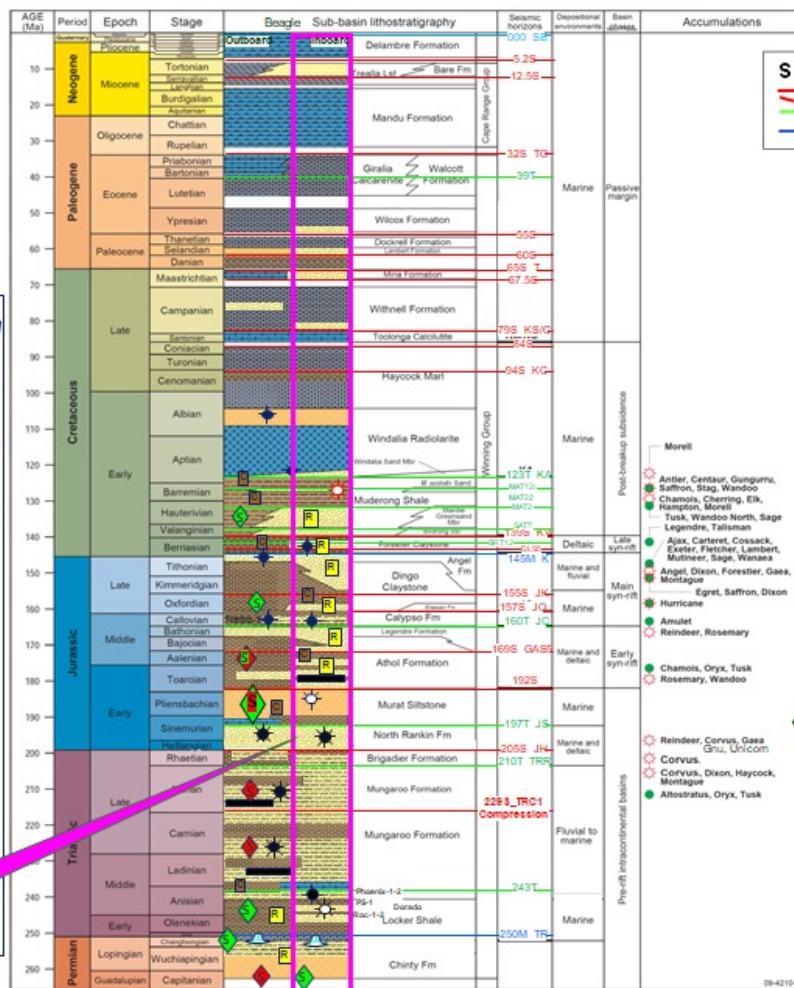
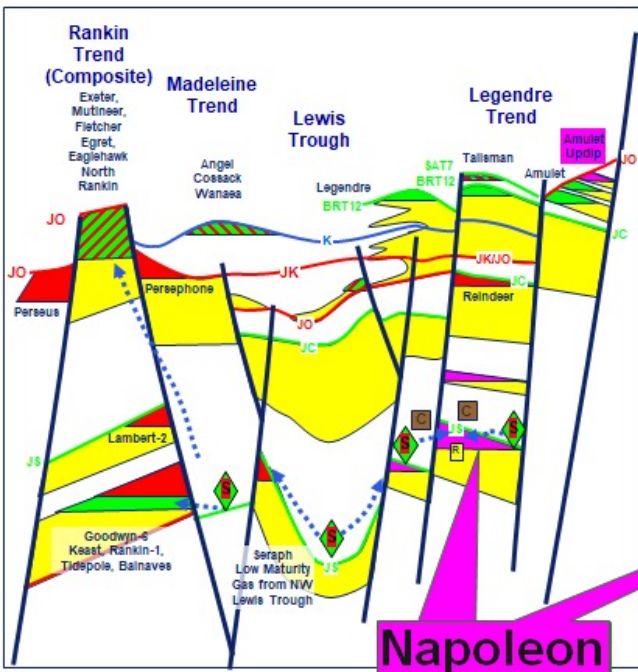
Napoleon in liquids rich Barrow-Dampier Sub-basin



# Stratigraphy

## WA-8-L & surrounds

## Trap & HC Migration



**Sequence Strat. Key**

- Sequence Boundary
- Transgressive Surface
- Max. Flooding Surface

- R Reservoir
- S Seal
- S Oil-prone Source Rock
- S Gas-prone Source Rock
- S Liquid-prone source Rock with some gas component
- S Gas-prone Source Rock with significant Oil component
- S Gas-prone Source Rock
- Main Migration Pathway
- Main Plays

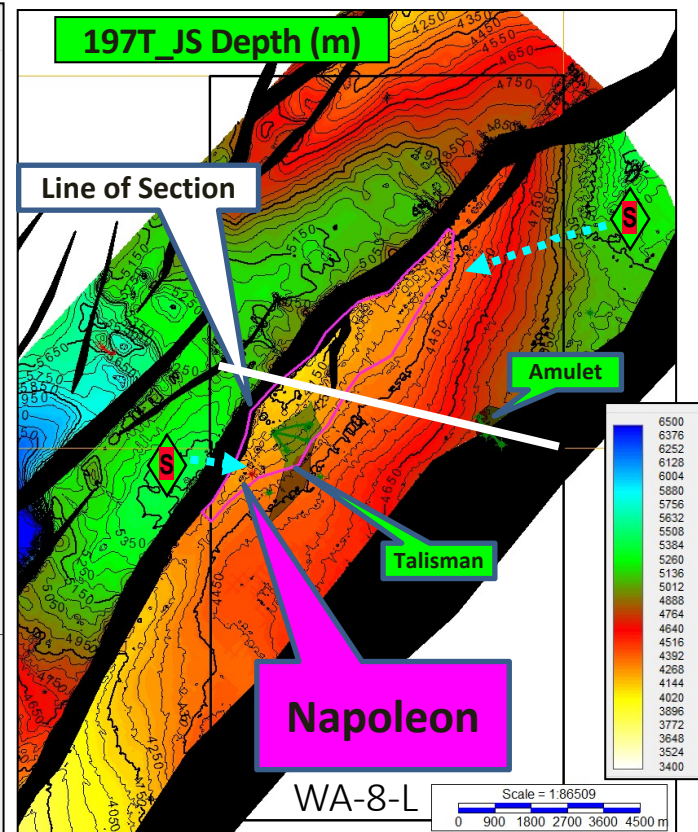
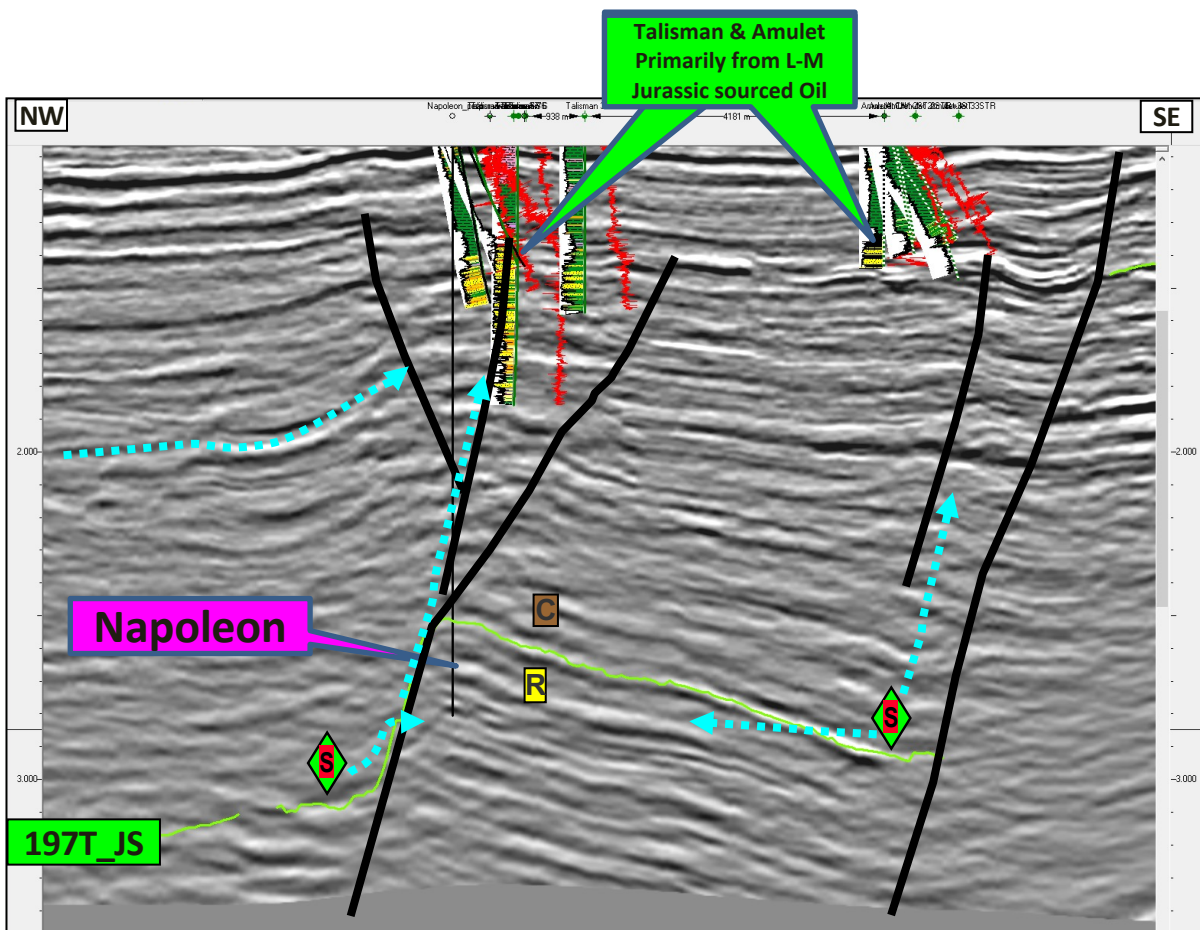
Source Rocks

Targets

- M-L Jurassic fluviodeltaics (Legendre/Athol/Murat Fms)
- Lwr Jurassic prodelta (Murat Silt), thick: TOC, HI
- L Jurassic fluviodeltaics (North Rankin Fm)



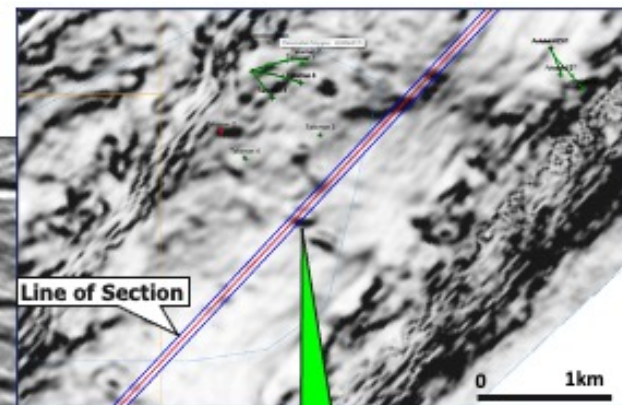
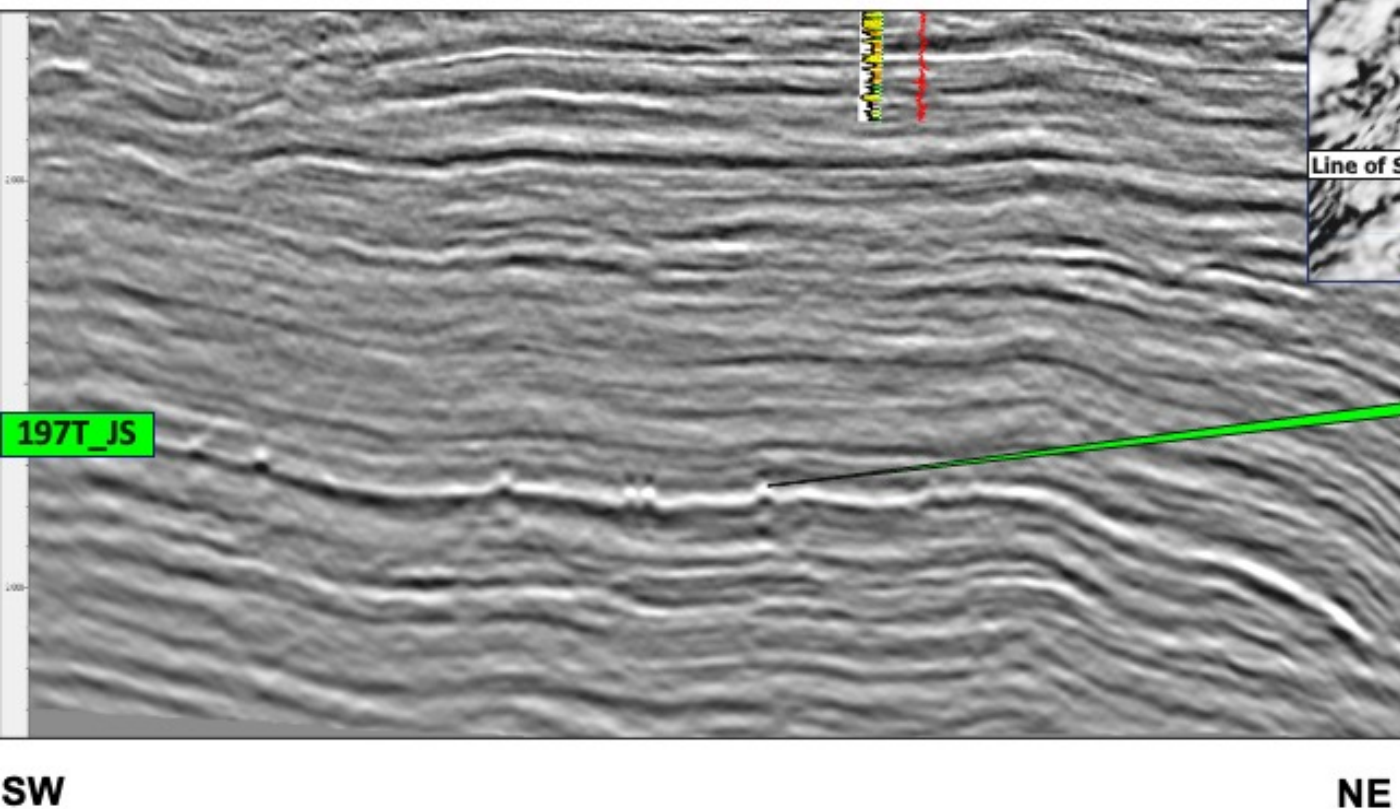
# Large simple structure with in-situ liquids rich mature charge



# Evidence of HC escape features

## Pockmarks at top reservoir

Seismic Coherency at Reservoir

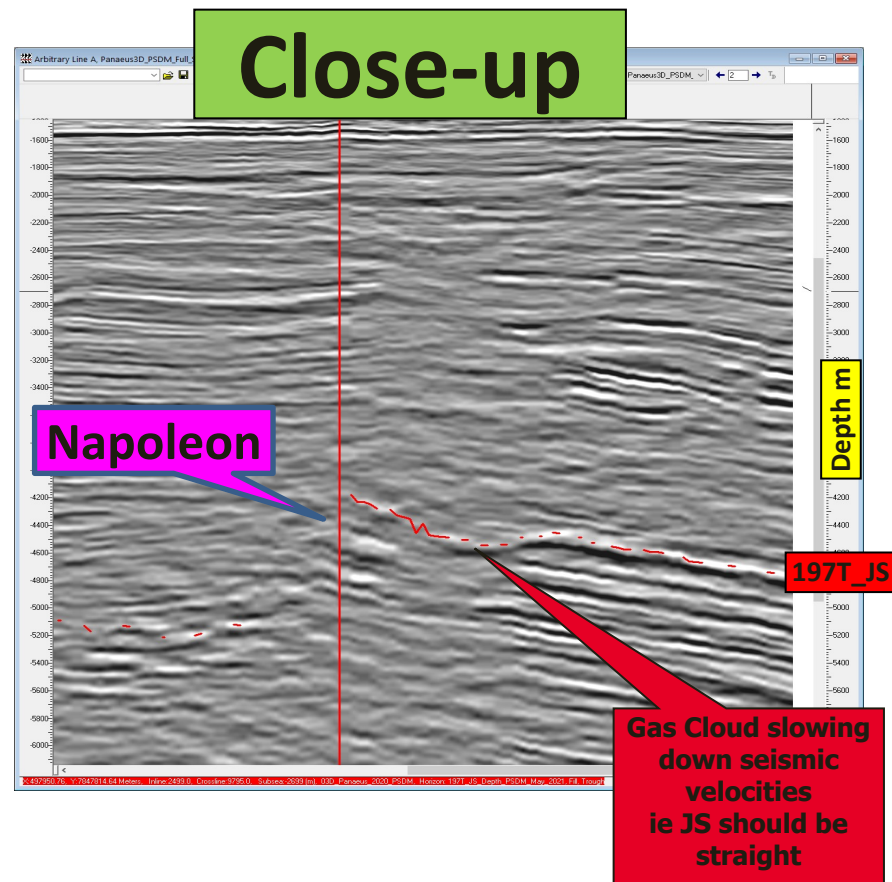
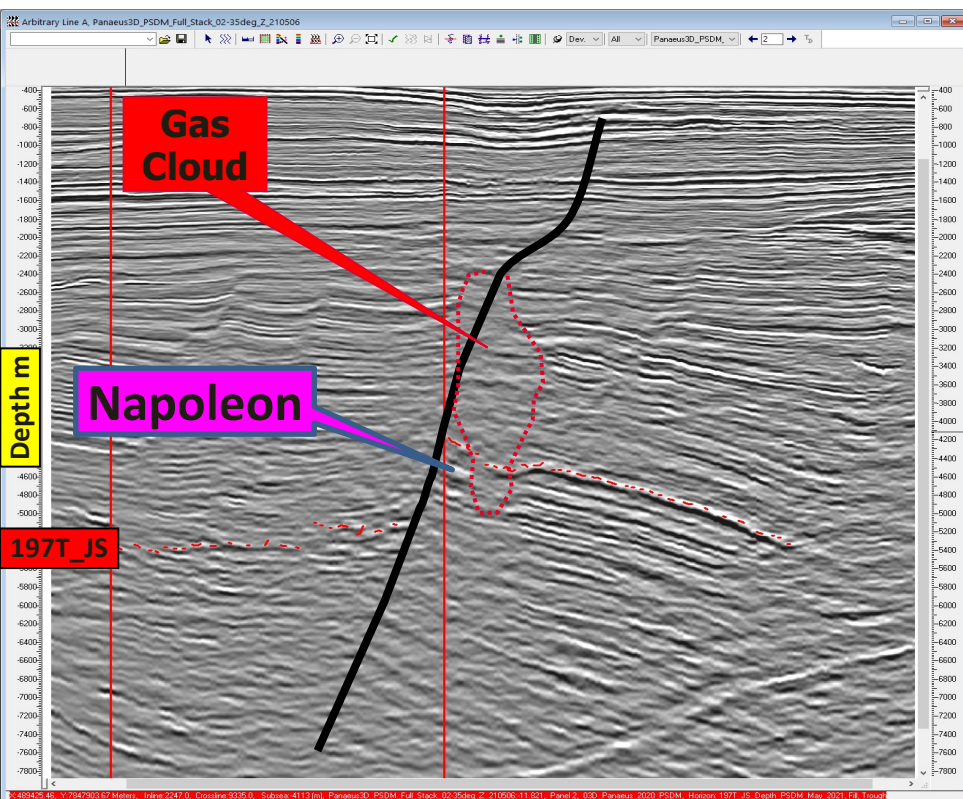


Top Reservoir Pockmark



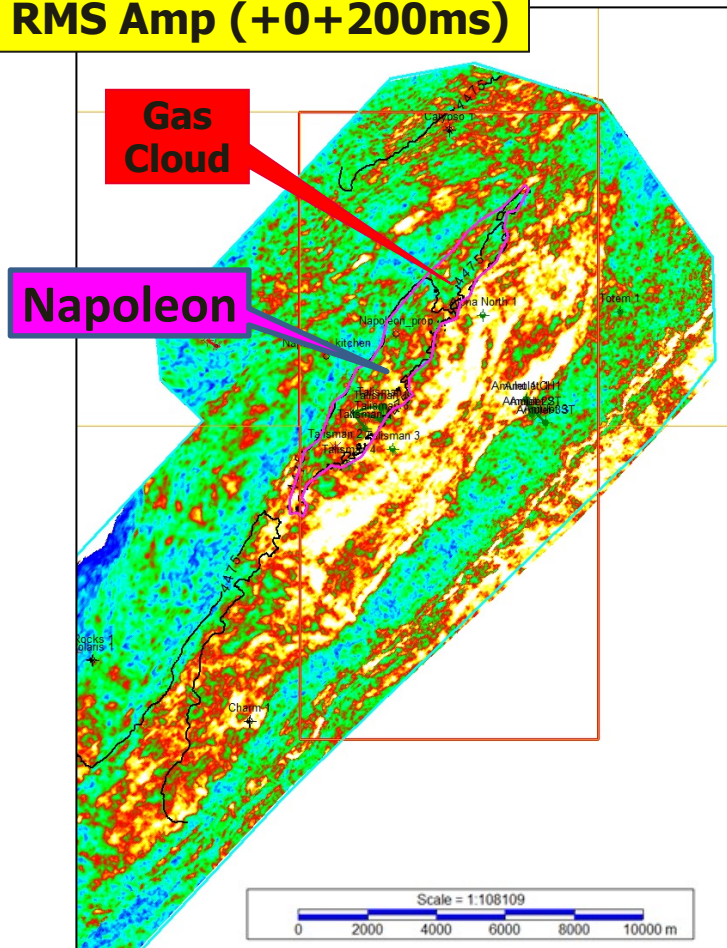


# Evidence of HC – Gas Cloud

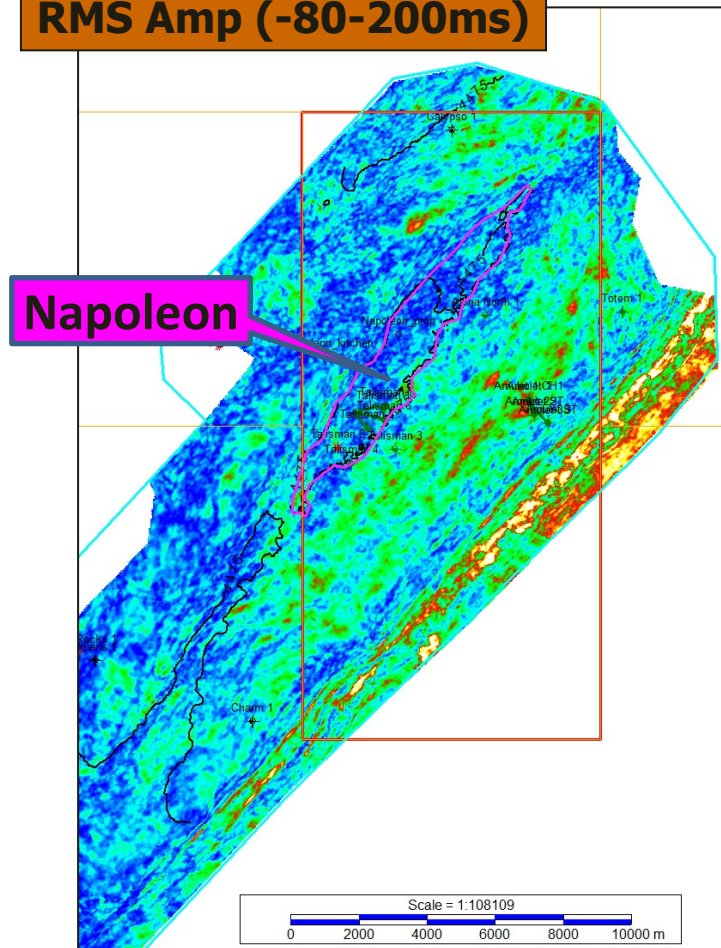


# Reservoir and Seal

**North Rankin Fm – Res.  
RMS Amp (+0+200ms)**

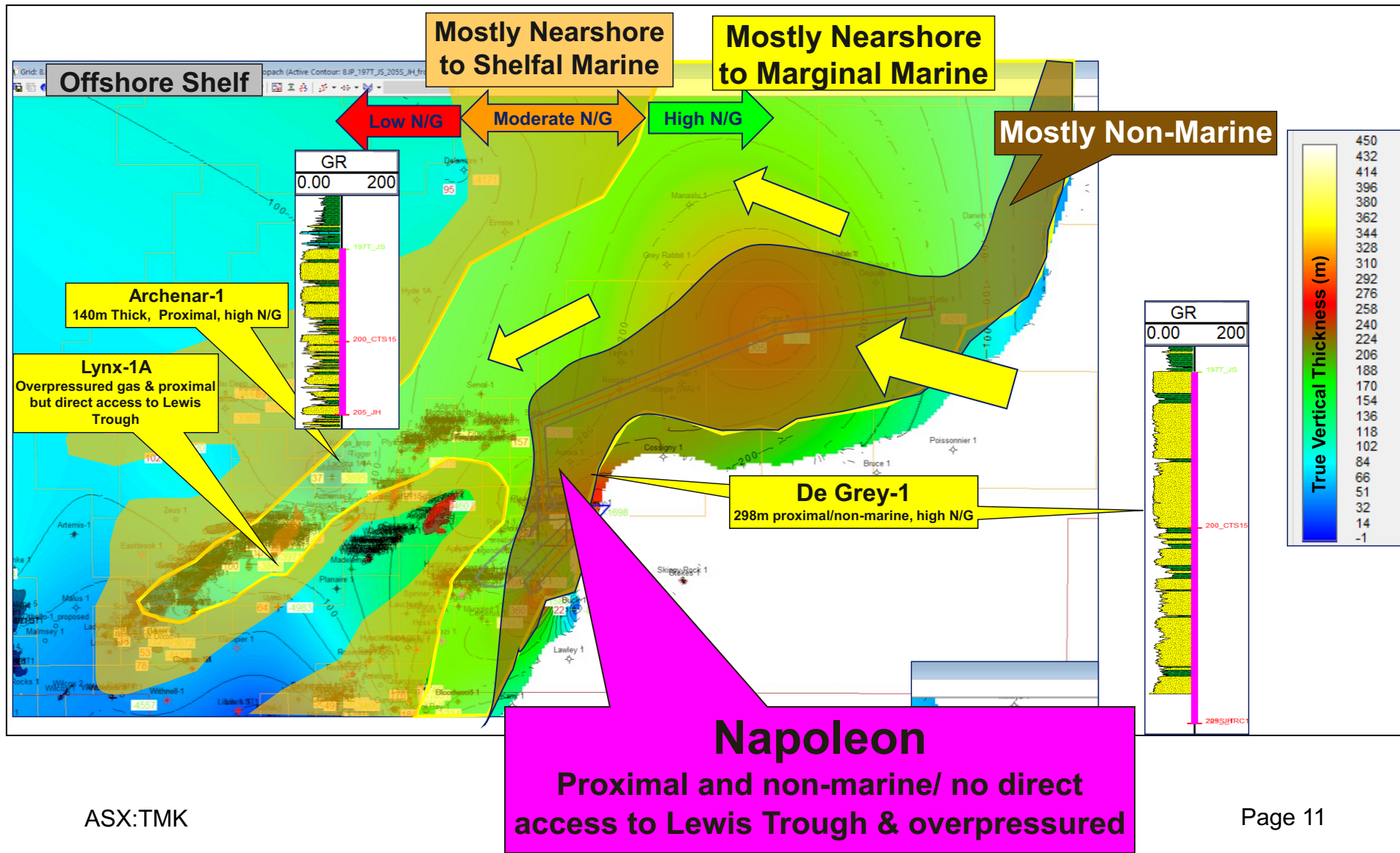


**Murat Siltstone  
RMS Amp (-80-200ms)**





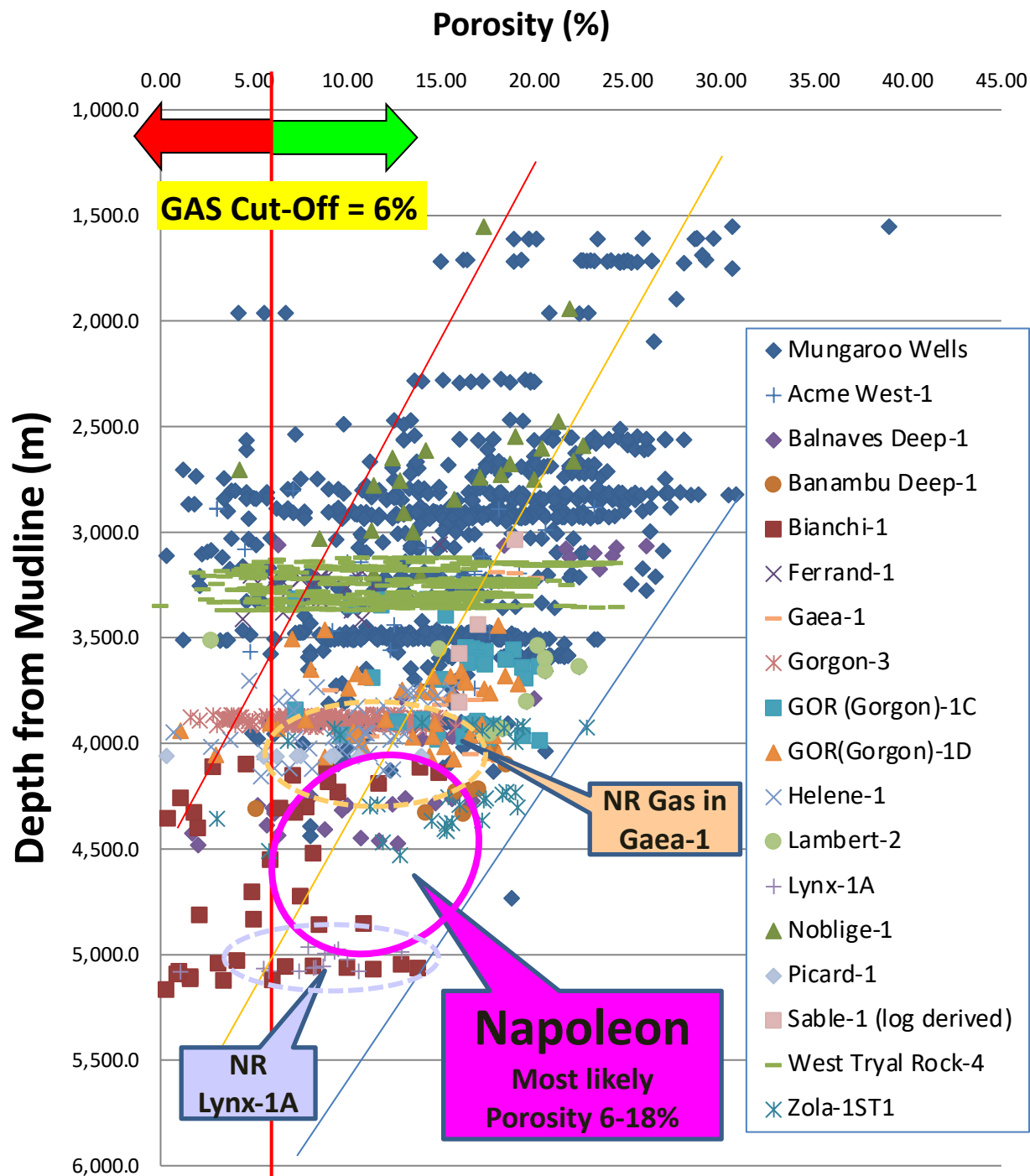
# North Rankin Reservoir – Non-marine Facies with High N/G





# North Rankin Reservoir – Effectiveness

If proximal, North Rankin reservoir behaves like non-marine Mungaroo Fm



# Napoleon – Summary

- Located in the premier Barrow-Dampier Sub-basin – NE liquids rich corner
- Reprocessing complete and basin analysis studies (including geochemical modelling) near completion
- Large simple structure - significant potential volume
- Simple tilted fault block with proven reservoir/seal pair and two local liquid prone charge kitchens
- Evidence of hydrocarbon charge (pockmarks) and gas cloud on pre-SDM 3D seismic
- Approx. 4,100 to 4,200m main target depth
- Known productive reservoir within massive (non-marine) and overpressured sandstone -> good production rates expected
- Additional targets in the Lower-Middle Jurassic
- Jack-up water depth (approx. 85m)
- Preliminary estimated dry hole cost: A\$45MM

# Board and Management

## **Brett Lawrence M.Pet.Eng., B.Eng., B.Com. – Managing Director**

Brett has 16 years of diverse experience in the oil and gas industry. He worked with Apache Energy for over eight years, performing roles in drilling engineering, reservoir engineering, project development and commercial management before seeking new venture opportunities. Brett currently holds a board position as a non-executive Director of Calima Energy Ltd (ASX: CE1).

## **Joseph Graham B.Sc., M.Pet.Eng. – Technical Director**

Joseph has 22 years experience as a Petroleum Engineer. Most recently he has lead multi-disciplined teams focused on production enhancement of marginal oil and gas opportunities. He is a joint founder of private equity firm Skye Energy Ventures which makes energy investments globally.

## **Logan Robertson M.Fin., B.Com. – Non Executive Director**

Logan is a Portfolio Manager at Hoperidge Capital, the Family Office of Navitas founder Rod Jones. Hoperidge is a substantial holder in Tamaska. Logan has a Bachelor of Commerce from UWA and Masters of Finance from UNSW.

## **Tim Wise B.Sc. – Commercial Director**

Tim is an executive experienced in the growth of early stage businesses. He regularly provides strategic advice to local, national and multinational companies. He is a founder and former CEO of The Tap Doctor and ASX listed Kalina Power (ASX : KPO). He is currently a director of Phos Energy, Graft Polymer and Melchor.

## **Dariusz Jablonski B.Sc. – Geoscience Lead**

Dariusz has 30 years experience as a Geoscientist in the oil and gas industry. He has primarily been focused on the greater north west shelf of Australia (the location of Napoleon), and has worked on most basins across the world. Dariusz has authored numerous publications on conventional and unconventional geoscience matters in the industry.





102 Forrest Street, Cottesloe WA 6011

PO Box 453, West Perth WA 6872

**Tel:** +61 8 9320 4700

**Email:** [info@tamaska.com.au](mailto:info@tamaska.com.au)

**[www.tamaska.com.au](http://www.tamaska.com.au)**