



**Finding the energy metals the world needs for a low-carbon future**

## **Gold Discovery Opportunities in the Stavely Volcanic Belt**

Update – 8 July 2025



# Disclaimer



- This presentation contains only an overview of Stavely Minerals Limited (“Stavely” or the “Company”) and its activities and operations. The contents of this presentation, including matters relating to the geology and exploration potential of the Company’s projects, may rely on various assumptions and subjective interpretations which it is not possible to detail in this presentation and which have not been subject to any independent verification.
- This presentation contains a number of forward-looking statements. Known and unknown risks and uncertainties, and factors outside of the Company’s control, may cause the actual results, performance and achievements of the Company to differ materially from those expressed or implied in this presentation.
- To the maximum extent permitted by law, Stavely does not warrant the accuracy, currency or completeness of the information in this presentation, nor the future performance of the Company, and will not be responsible for any loss or damage arising from the use of the information.
- The information contained in this presentation is not a substitute for detailed investigation or analysis of any particular issue. Current and potential investors should seek independent advice before making any investment decision in regard to the Company or its activities.



# A Modern Australian Energy Metals Growth Company



What does Stavely Minerals offer that is different?



## BIG targets







# Stavely Project

STAVELY MINERALS - FINDING THE COPPER THE WORLD NEEDS FOR A LOW-CARBON FUTURE



# The Cayley Lode Mineral Resources Estimate



- **Discovery** – outstanding shallow high-grade copper-gold-silver discovery (September 2019), the Cayley Lode
- **Cayley Lode MRE<sup>1</sup>** – 9.3Mt at 1.23% Cu, 0.23g/t Au and 7.1g/t Ag
- **Total Resources** – 28.3Mt at 0.75% Cu, 0.11g/t Au and 3.5g/t Ag
- **Containing** – 210,000t Cu, 100,000oz Au, 3.2Moz Ag and 2.4kt Zn
- Mineralisation from surface to 300m depth, remains open



<sup>1</sup> Reported in compliance with the JORC Code 2012, see ASX announcement 14 June 2022, see Appendix 1 for classifications

Cayley Lode bornite mineralisation - photo from ASX announcement 11 September 2019



# Stavely Project – Control Major Cu-Au Fertile Volcanic Belts

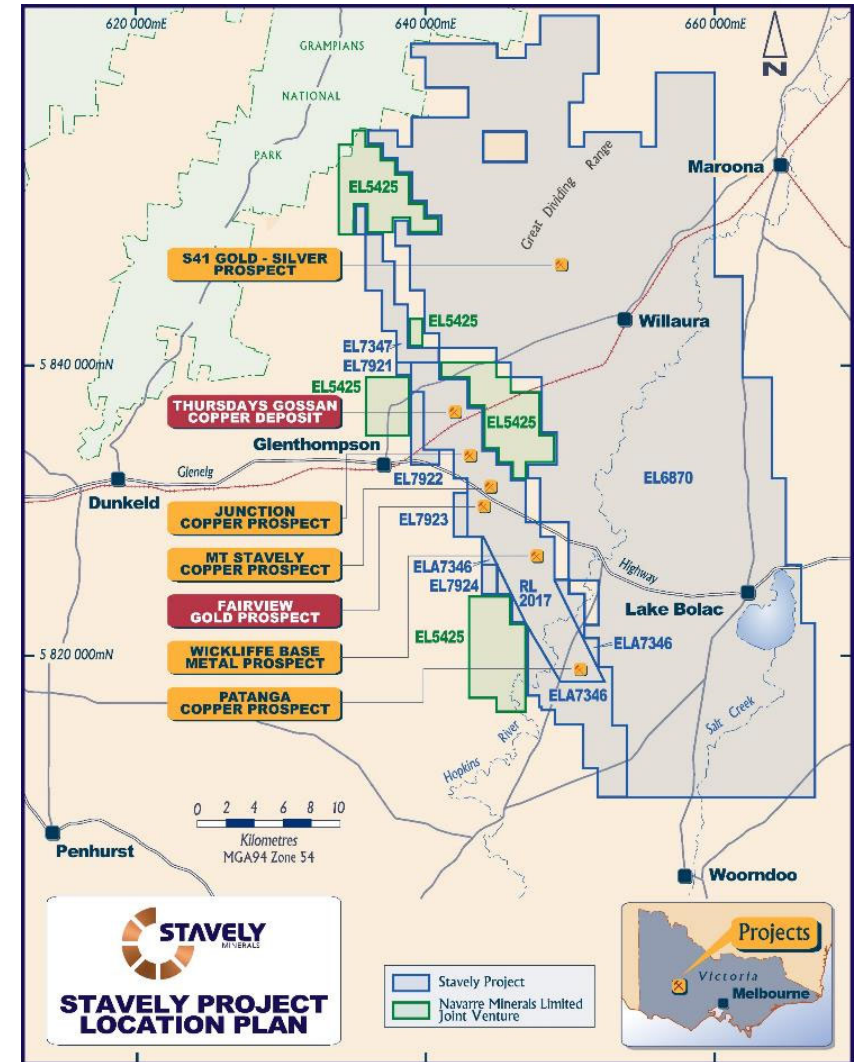


- **Discovery**– outstanding shallow high-grade copper-gold-silver discovery (September 2019), the **Cayley Lode**<sup>1</sup>
- **Multiple regional gold discovery opportunities:**
  - Fairview North gold prospect<sup>2</sup>
  - Fairview South gold prospect<sup>2</sup>
  - S41 breccia-hosted gold – 2km x 750m breccia pipe
    - Only 1 x diamond drill hole in large system, scale potential<sup>3</sup>
- Stavely Minerals controls tenure over some 130km of various components of the Stavely Arc, an Andean-style continental margin volcanic arc that is well preserved and prospective for several world-class styles of gold mineralisation.

<sup>1</sup> See ASX announcement 14 June 2022, Appendix 1

<sup>2</sup> See Stavely Minerals Prospectus April 2014

<sup>3</sup> See ASX announcement 23 May 2023 and 10 June 2025







# Gold Discovery Opportunities

STAVELY MINERALS - FINDING THE COPPER THE WORLD NEEDS FOR A LOW-CARBON FUTURE



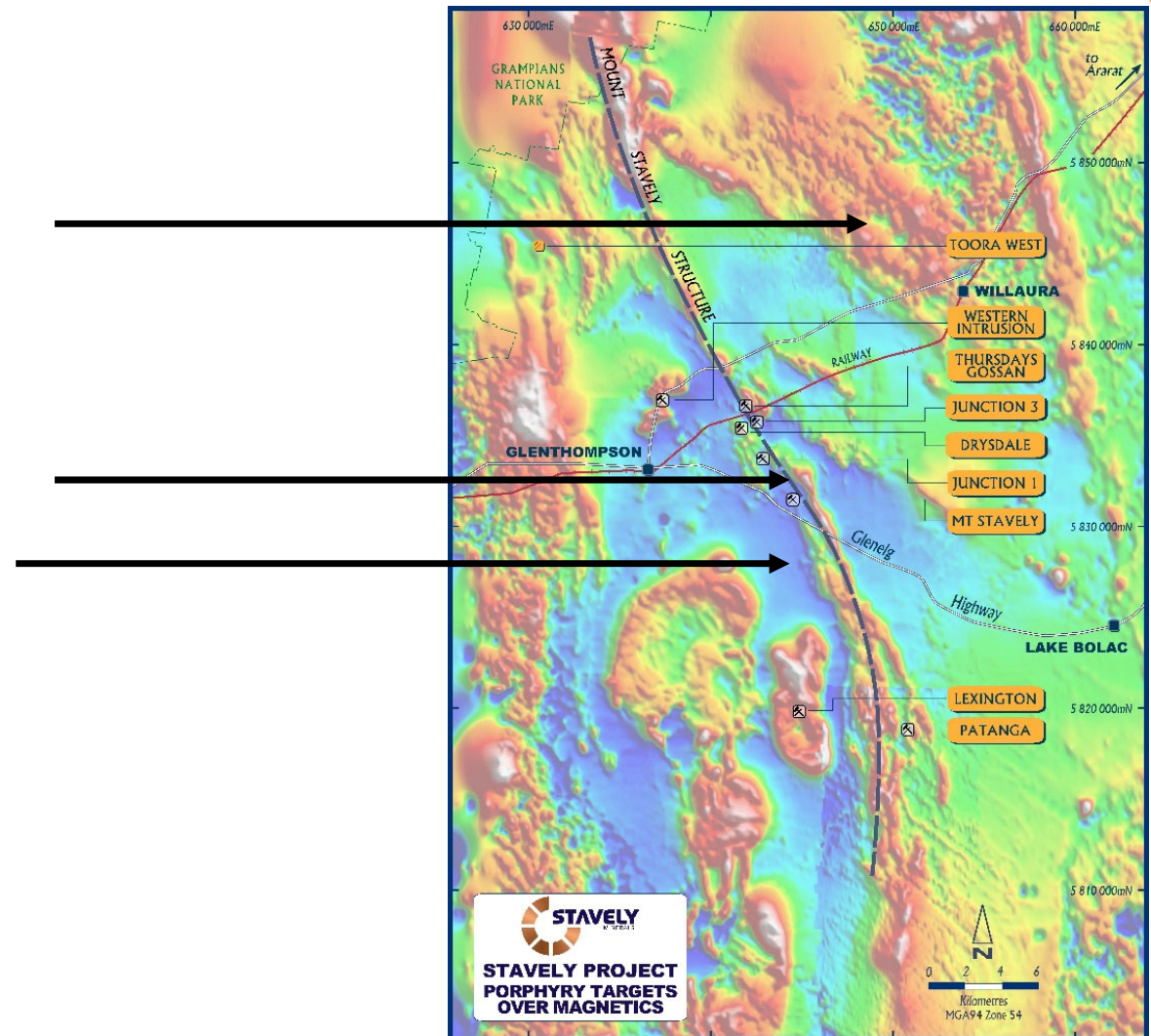
# Gold Discovery Opportunities



S41 breccia-hosted gold prospect

Fairview North gold prospect

Fairview South gold prospect



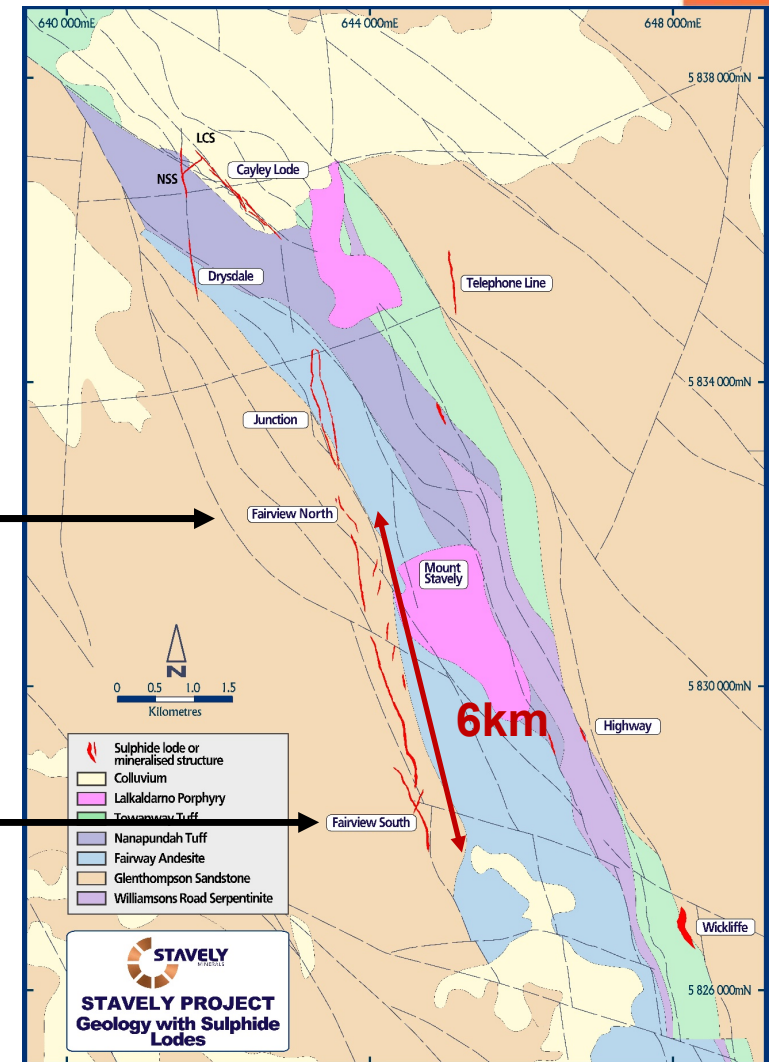


# Gold Discovery Opportunities – Fairview North and South



Fairview North gold prospect  
(favourable NW structural control)

Fairview South gold prospect  
(gold associated with porphyry dykes)







# Fairview North

STAVELY MINERALS - FINDING THE COPPER THE WORLD NEEDS FOR A LOW-CARBON FUTURE



# Gold Discovery Opportunities – Fairview North<sup>1</sup>



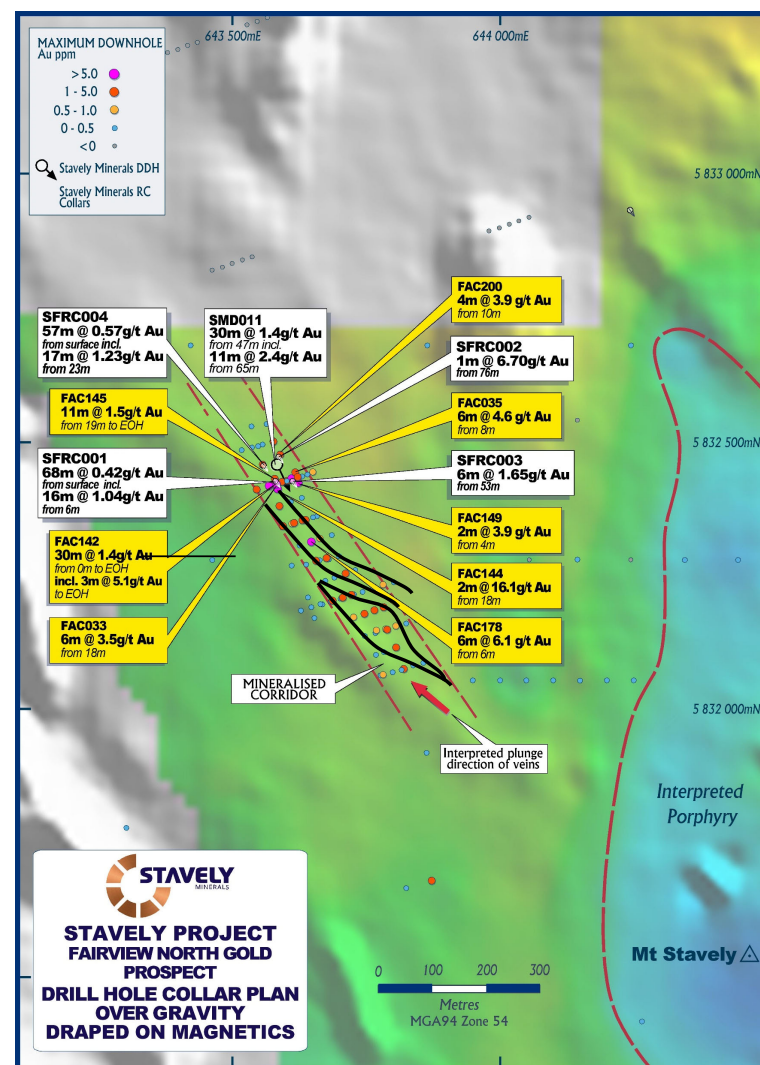
## Previous explorer drill results:

- FAC142 – 22m at 1.71g/t Au from 8m to EoH
  - Incl. 3m at 5.1g/t Au to EoH
- FAC178 – 6m at 6.1g/t Au from 6m
- FAC145 - 11m at 1.5g/t Au from 19m to EoH
- FAC144 – 2m at 16.1g/t Au from 18m
- FAC035 – 6m at 4.6g/t Au from 8m

## Stavely Minerals previous intercepts:

- SMD011 – 30m at 1.4g/t Au from 47m
  - Incl. 11m at 2.4g/t Au from 65m
- SFRC001 – 68m at 0.42g/t Au from surface
  - Incl. 16m @ 1.04g/t Au from 6m
- SFRC002 – 1m at 6.70g/t Au from 76m
- SFRC003 – 6m at 1.65g/t Au from 53m
- SFRC004 – 57m at 0.57g/t Au from surface
  - Incl. 17m at 1.23g/t Au from 23m

<sup>1</sup>See ASX:SVY announcement 20 July 2017 and 22 May 2025



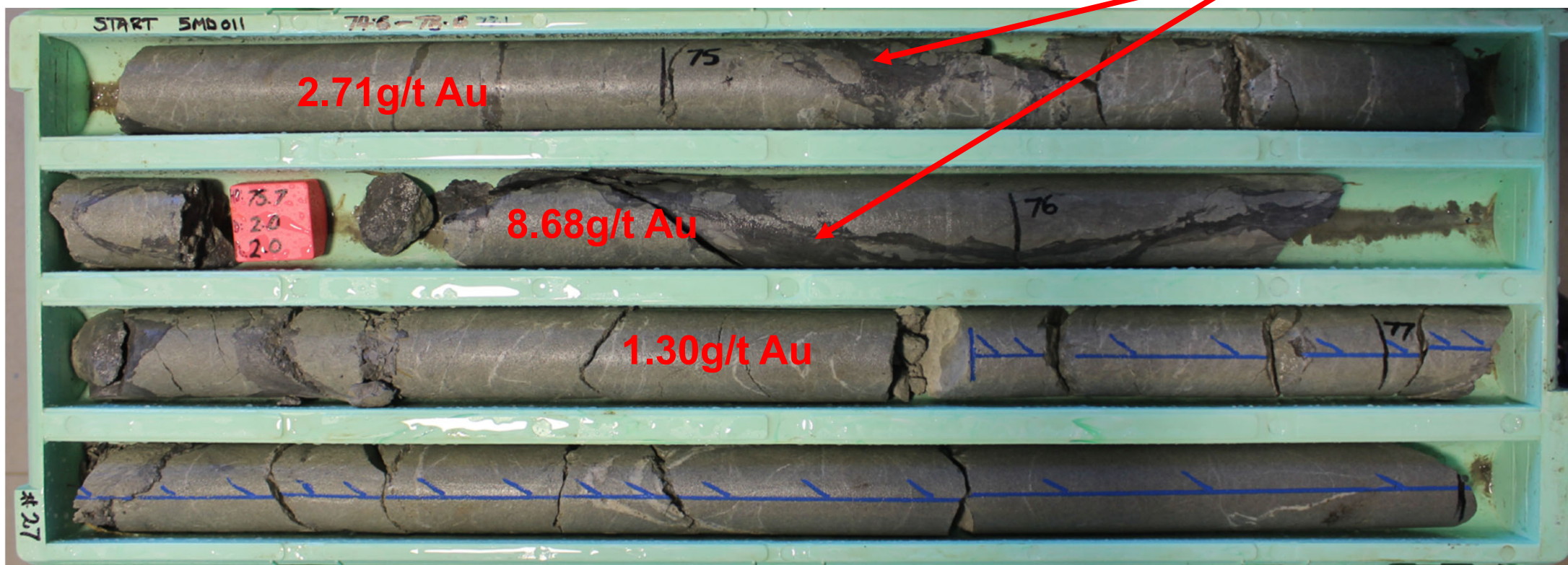


# Gold Discovery Opportunities – Fairview North<sup>1</sup>



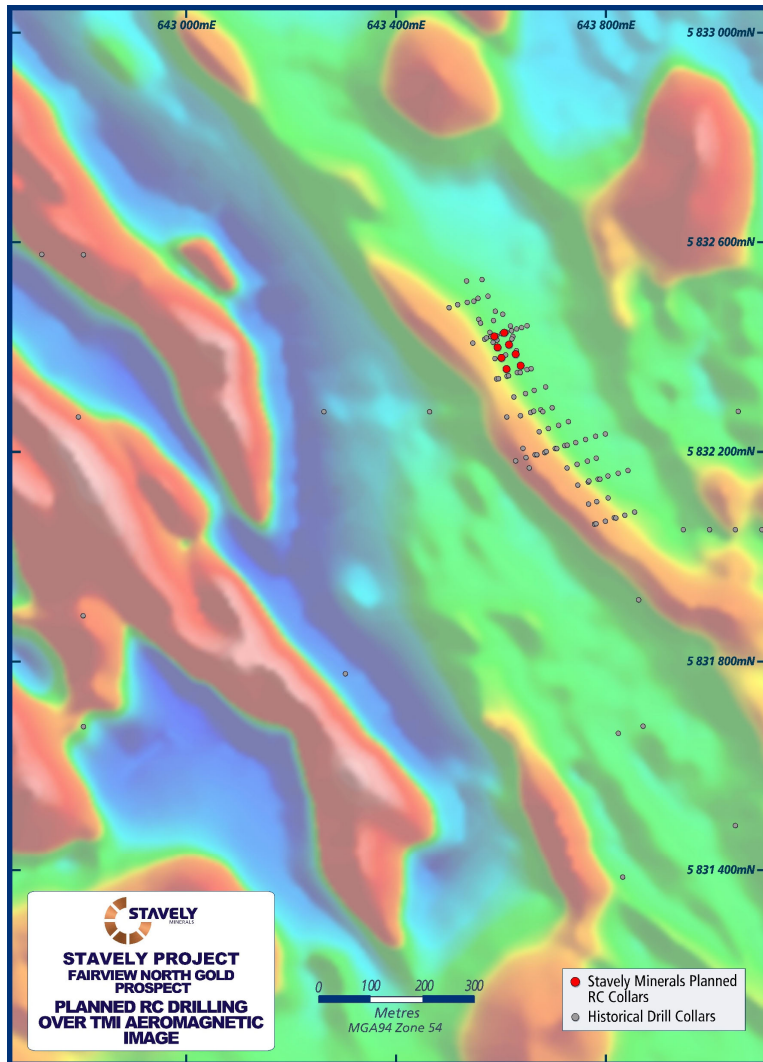
SMD011 – 79.6m to 78.0m (within 11m at 2.4g/t Au)

Brecciated sandstone with fine sulphide-matrix (black)





# Gold Discovery Opportunities – Fairview North



## Attractive gold target:

- Favourable NW 'kink' in the Fairview trend
- Same fertile orientation as the Cayley Lode
- Magnetics indicate it is located on the contact between sandstone and diorite intrusion – competency contrast

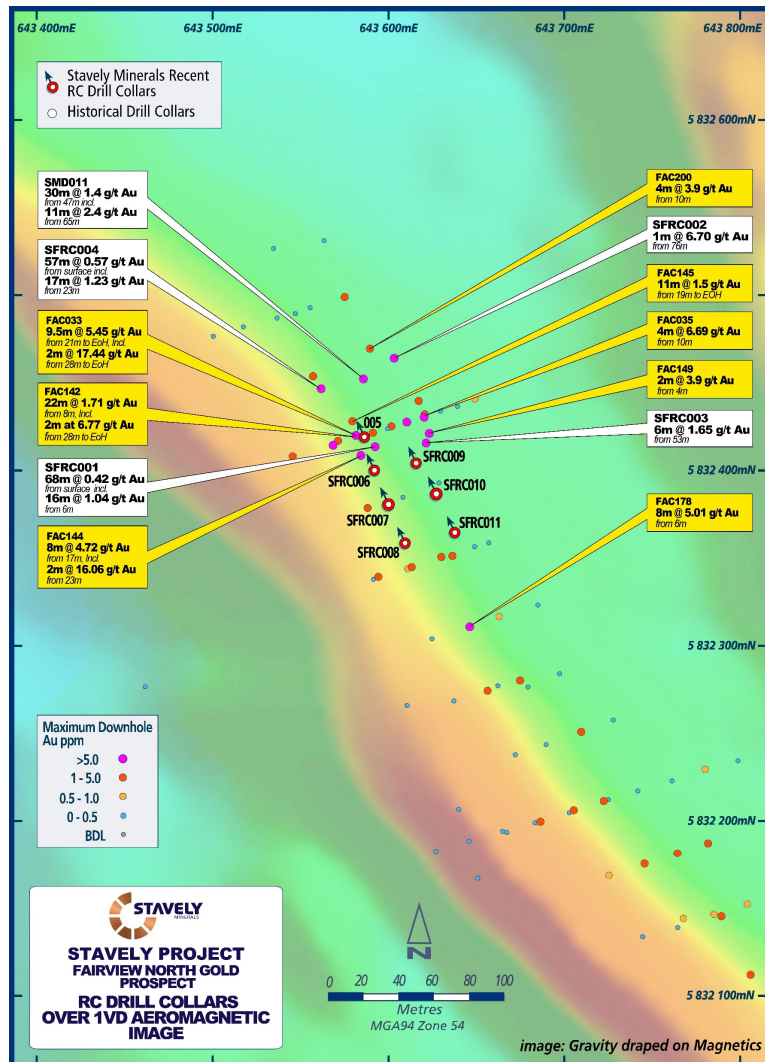
## Drilling recently completed, assays pending:

- 7 RC drill holes to 150m (red circles)
- Objective: confirm new interpretation on structural control
- If successful, drill it out

<sup>1</sup>See ASX:SVY announcement 22 May 2025



# Gold Discovery Opportunities – Fairview North



## Attractive gold target:

- Favourable NW 'kink' in the Fairview trend
- Same fertile orientation as the Cayley Lode
- Magnetics indicate it is located on the contact between sandstone and diorite intrusion – competency contrast

## Drilling recently completed, assays pending:

- 7 RC drill holes to 150m (red circles)
- Objective: confirm new interpretation on structural control
- If successful, drill it out





# Fairview South

STAVELY MINERALS - FINDING THE COPPER THE WORLD NEEDS FOR A LOW-CARBON FUTURE



# Gold Discovery Opportunities – Fairview South



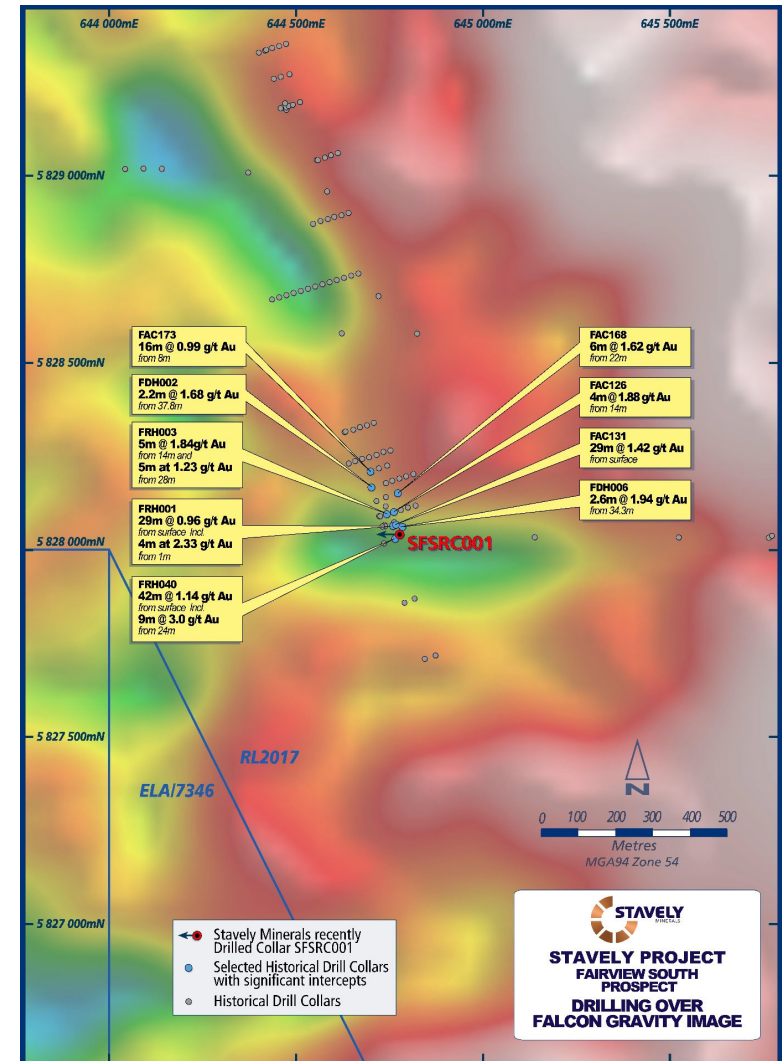
## Previous explorer drill results<sup>1</sup>:

- FRH040 – 42m at 1.14g/t Au from surface, including 9m at 3.00g/t Au from 24m
- FAC131 – 29m at 1.42g/t Au from 6m
- FRH003 - 5m at 1.84g/t Au from 14m, and 5m at 1.23g/t Au from 28m
- FAC168 – 6m at 1.62g/t Au from 22m
- FAC126 – 4m at 1.88g/t Au from 14m
- FDH006 – 2.6m at 1.94g/t Au from 34.3m
- FRH001 – 29m at 0.96g/t Au from surface, including 4m at 2.33g/t Au from 1m
- FAC173 – 16m at 0.99g/t Au from 8m

Drilled by Beaconsfield Gold up to 1 month before the Beaconsfield Mine disaster, no further work after.

Located on a major WNW structure and proximal to a gravity low – interpreted to be a rhyolite intrusion.

<sup>1</sup>See Stavely Minerals Prospectus April 2014





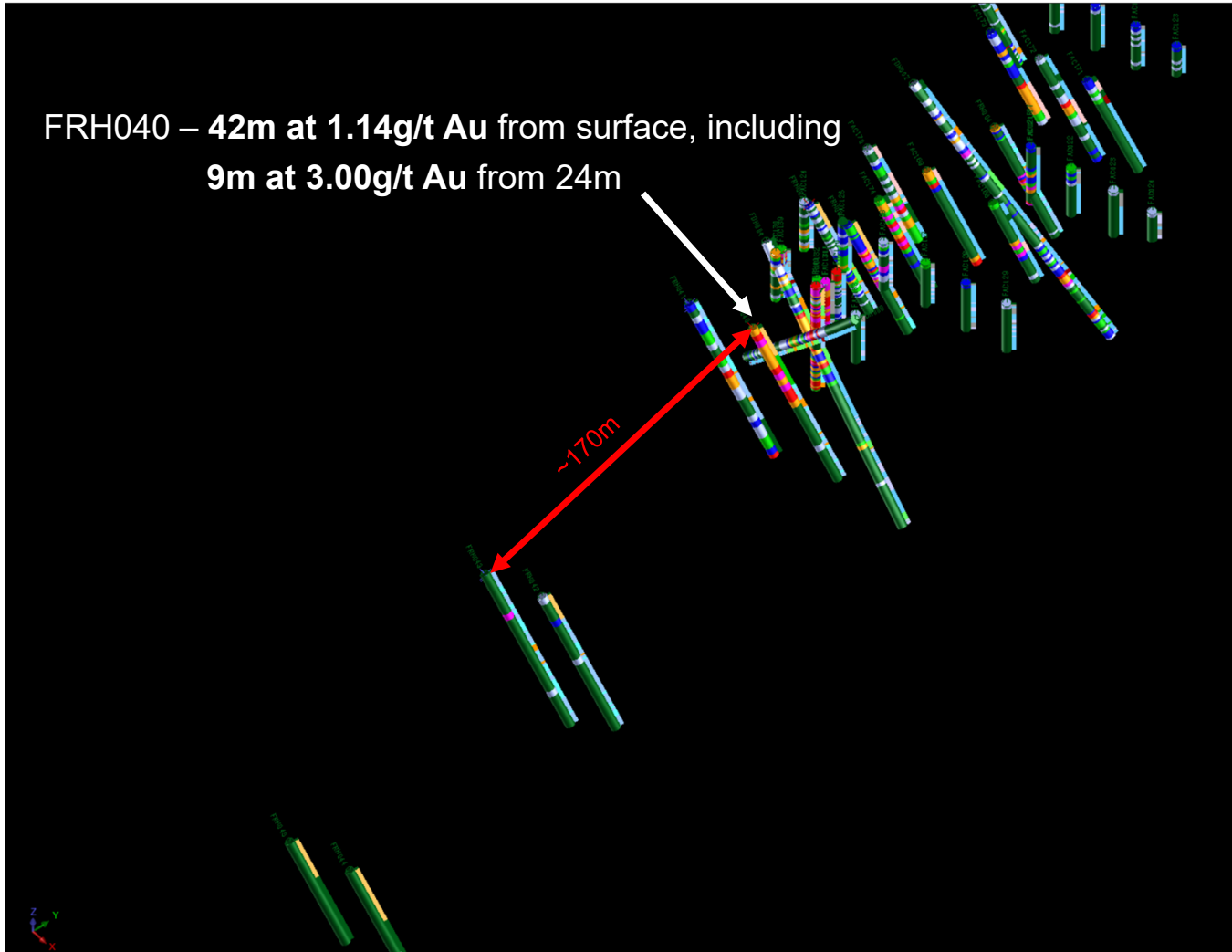
# Gold Discovery Opportunities – Fairview South



FRH040 – 42m at 1.14g/t Au from surface, including  
9m at 3.00g/t Au from 24m

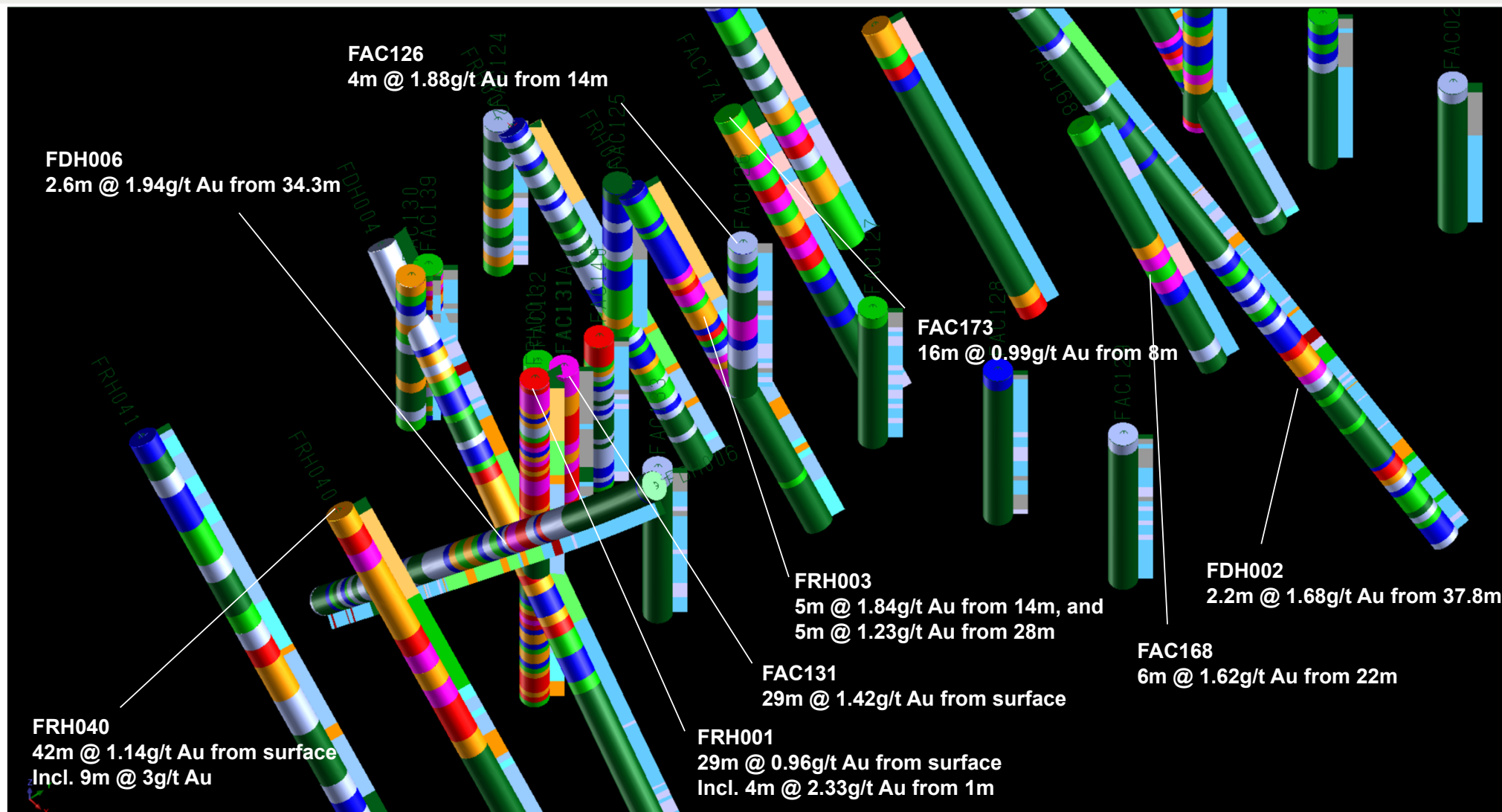
~170m

Surpac oblique 3D view



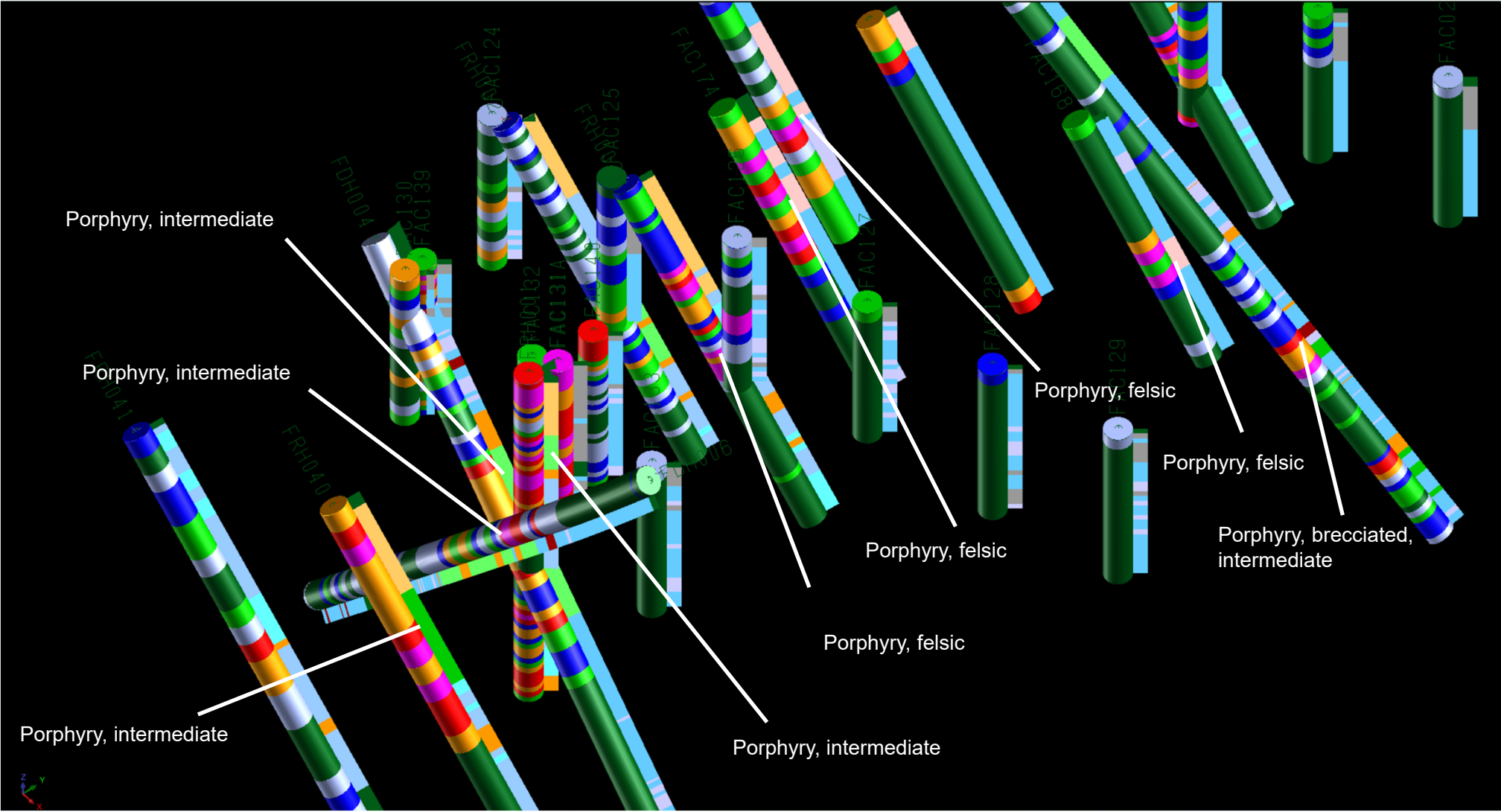


# Fairview South Gold Prospect – gold with porphyry, Cu not assayed



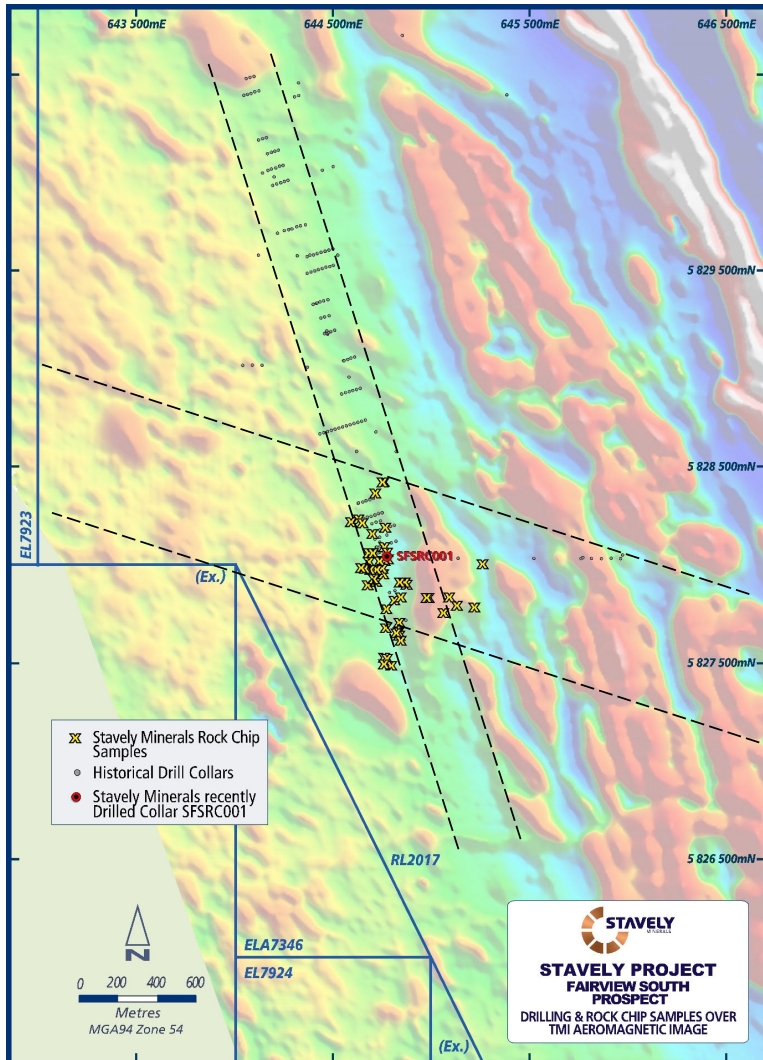


# Fairview South Gold Prospect – gold with porphyry, Cu not assayed





# Fairview South Magnetics 1VD, Structure and ?Intrusion



## Fairview South Gold Prospect

- At the intersection of ~NS and WNW structures
- Associated with logged intermediate and felsic intrusive dykes
- A single RC drill hole (SFSRC001) recently drilled to confirm gold mineralisation location – assays pending
- Abundant gossanous float material sampled in the paddock – assays pending



# Outcrop at Rock Chip SSL13594



Rock chip SSL13594



Assays pending

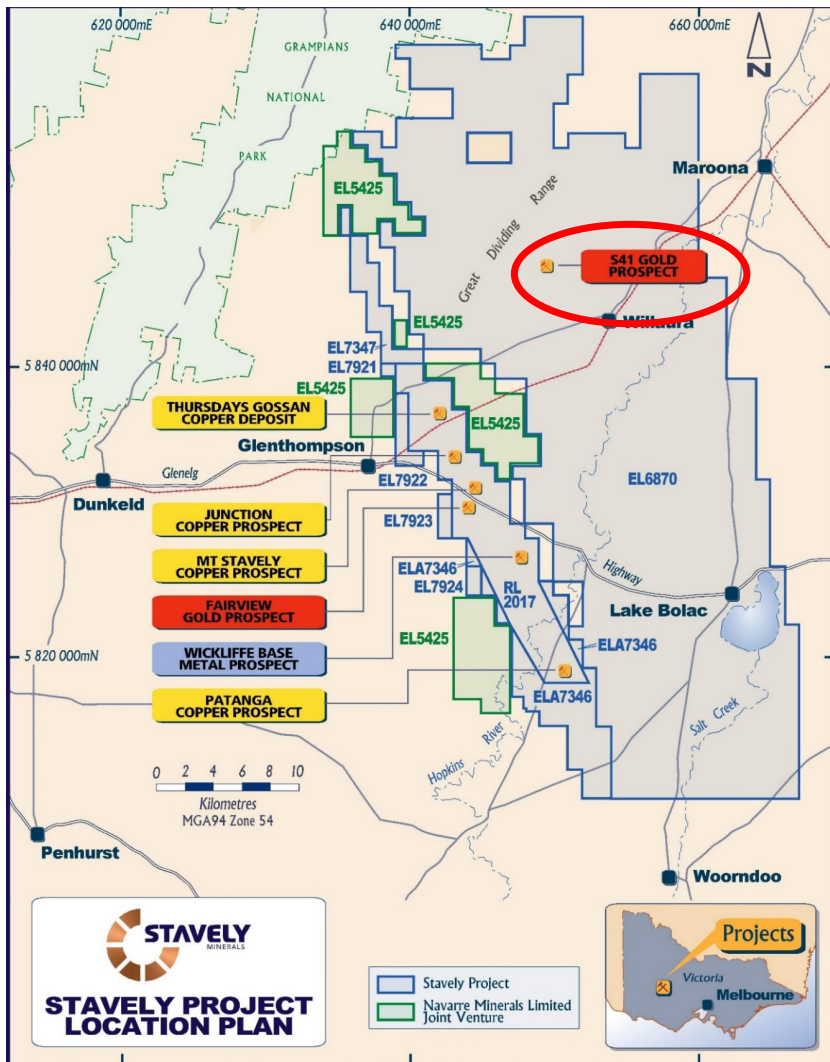




# S41 Breccia-Hosted Gold Target



# Emerging Discovery? – The S41 Breccia Prospect



## S41 Breccia-Hosted Gold Prospect

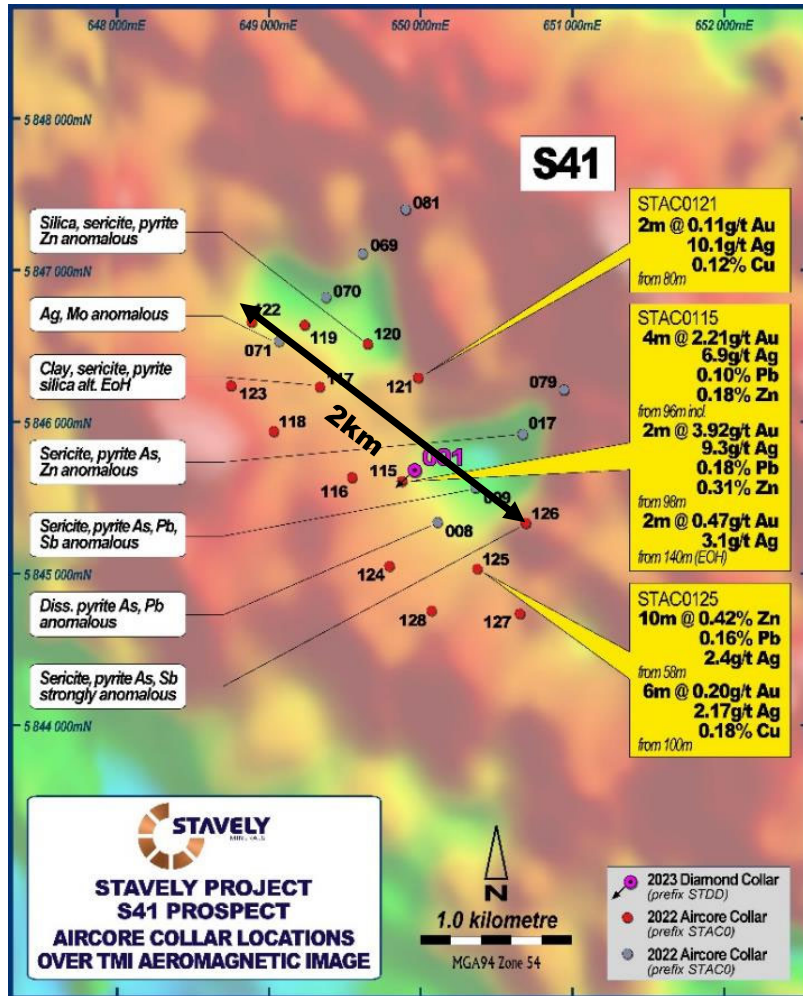
- Identified in Stavely Minerals' Falcon Gravity Gradiometer® survey under 50m of basalt
- We are the first to see this gold mineralized system:
  - Identified the geophysical anomaly
  - Drilled through the basalt to discover the gold-base metal anomaly
  - Diamond drilled it and identified the style of system it is: carbonate – base metal – gold
  - Well studied style of gold deposit
- Multi-million ounce discovery potential



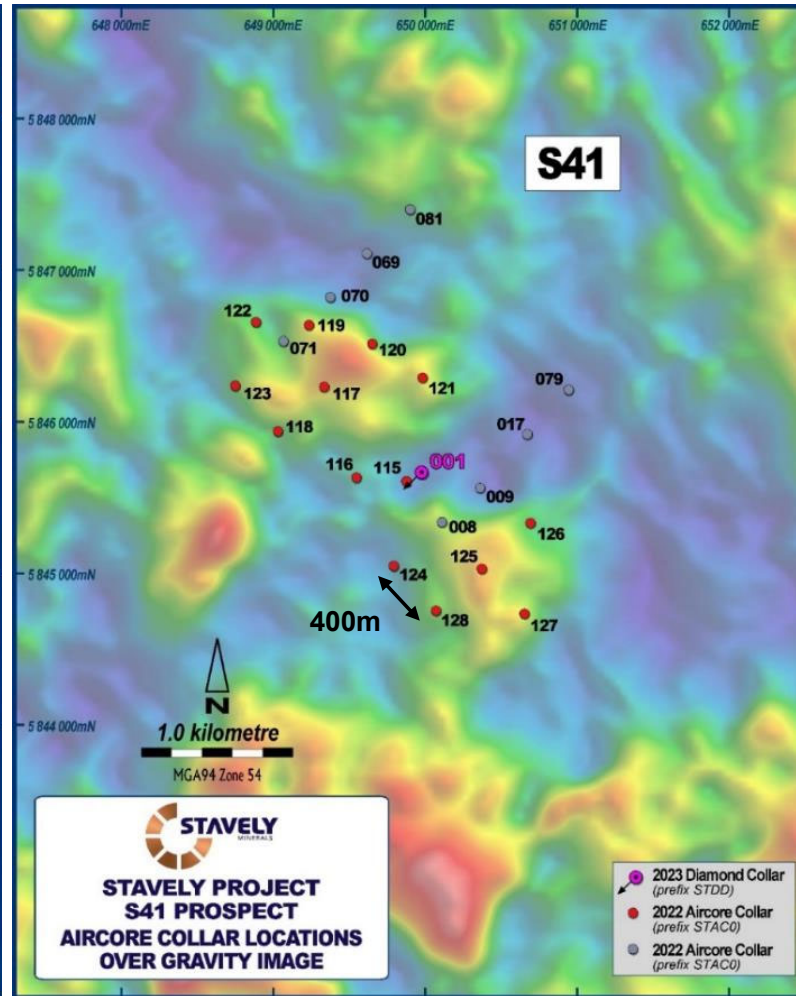
# Emerging Discovery? – The S41 Breccia-Hosted Gold Prospect



## Magnetics



## Gravity



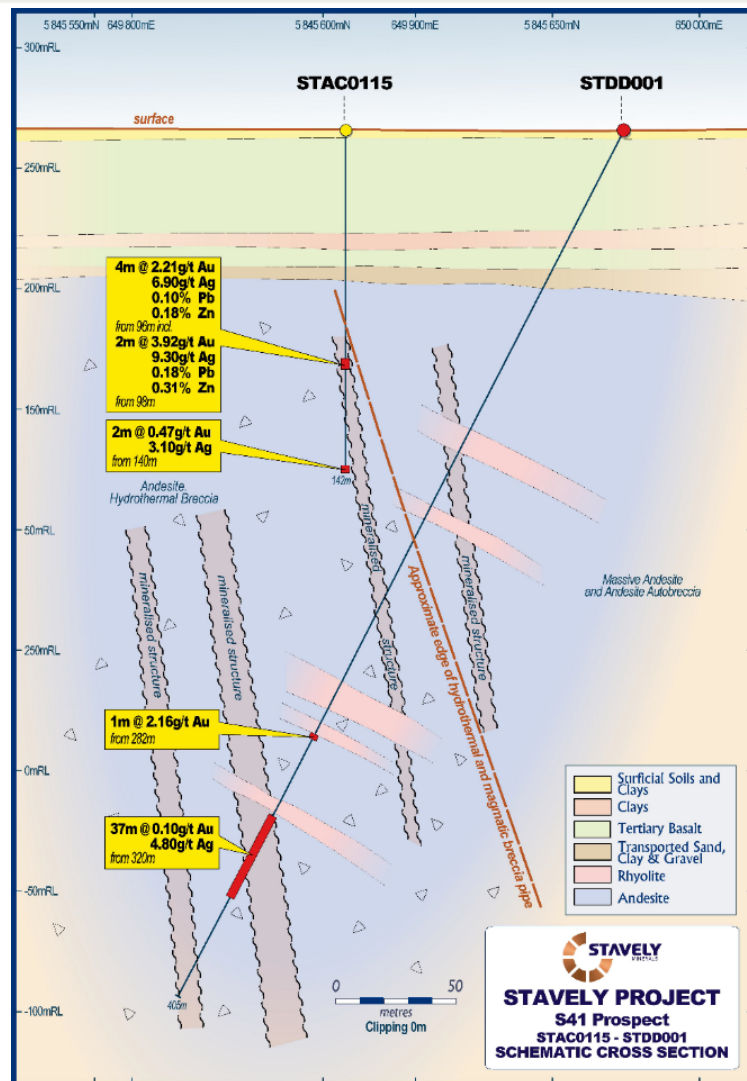
## S41 Prospect Aircore<sup>1</sup>

- **4m at 2.21g/t Au** from 96m drill depth, including:
- **2m at 3.92g/t Au** from 98m in aircore drilling
- Large 2km alteration zone
- Strongly anomalous base metals and pathfinder geochemistry

<sup>1</sup>See ASX announcement 19/04/2023



# The S41 Breccia Prospect – first look STDD001



## S41 Diamond Drill Hole<sup>1</sup>

- Only one diamond drill hole in the 2,000m x 750m interpreted breccia system
- **1m at 2.16g/t Au** from 282m drill depth
- **37m at 0.10g/t Au**, including:
  - **2m at 0.56g/t Au** from 320m, and
  - **5m at 24.3g/t Ag** from 353m
- Importantly demonstrated that there is gold and silver in the system associated with Mn-carbonate and Zn & Pb base metals
- Breccia-hosted systems host notoriously inconsistent gold mineralization eg. Kidston
- Need to find the better plumbing on the edge

<sup>1</sup>See ASX announcement 26/04/2023



# Breccia-hosted Carbonate – Base Metal – Gold Systems



## Low sulphidation mineralisation style

Depth	quartz-sulphide Au ± Cu	carbonate-base metal Au			epithermal quartz Au
Shallow	opal, chalcedony marcasite	<u>Sphalerite</u> Fe-poor	<u>Ag sulphosalts</u> acanthite	<u>Carbonate</u> siderite FeCO <sub>3</sub>	
		<div> <div>white</div> <div>yellow</div> <div>red</div> </div> <div>→</div> <div> <div>rhodochrosite MnCO<sub>3</sub></div> <div>argenteite Ca (MgMgFe)(CO<sub>3</sub>)<sub>2</sub></div> <div>ankerite CaCO<sub>3</sub>(MgFe)CO<sub>3</sub></div> </div> <div>→</div>			quartz
	pyrite quartz	+ galena			high fineness free Au
Deep		brown	tennantite tetrahedrite	dolomite CaCO <sub>3</sub> .MgCO <sub>3</sub>	<u>Te minerals</u> hessites tellurobismuthenite
		black		Mg calcite	
	chalcopryrite, pyrrhotite specularite	Fe-rich		calcite CaCO <sub>3</sub>	

CORBETT ai1851

**‘goldilocks’ gold  
precipitation zone**

With kind permission from Greg Corbett





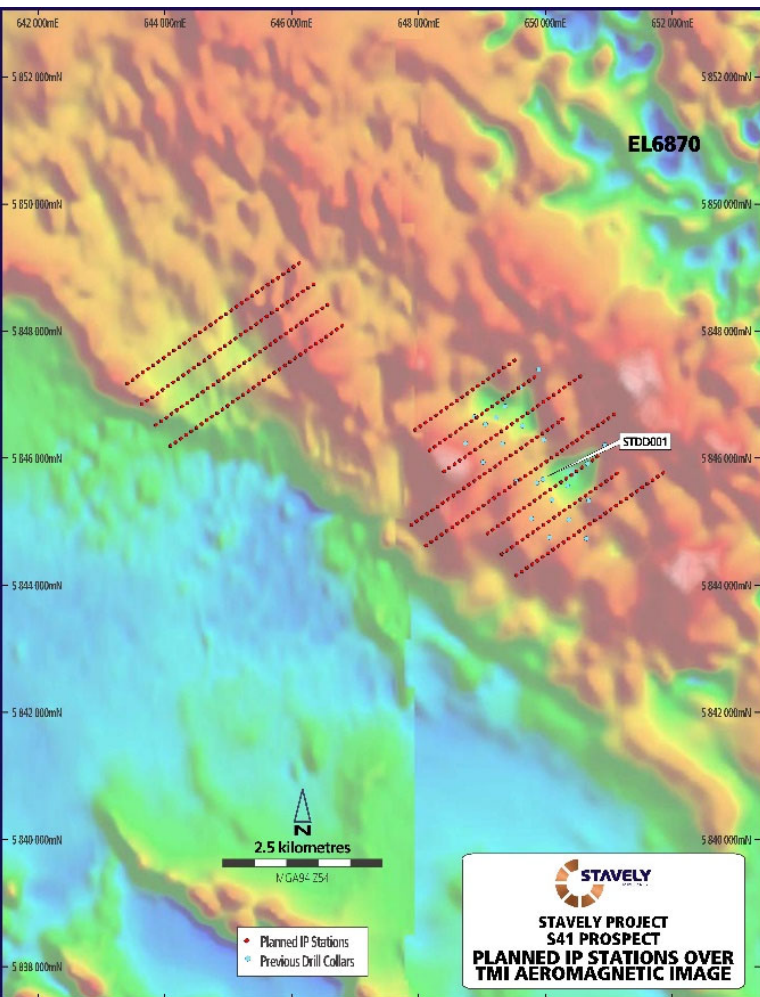
<sup>1</sup>See ASX announcement 26/04/2023



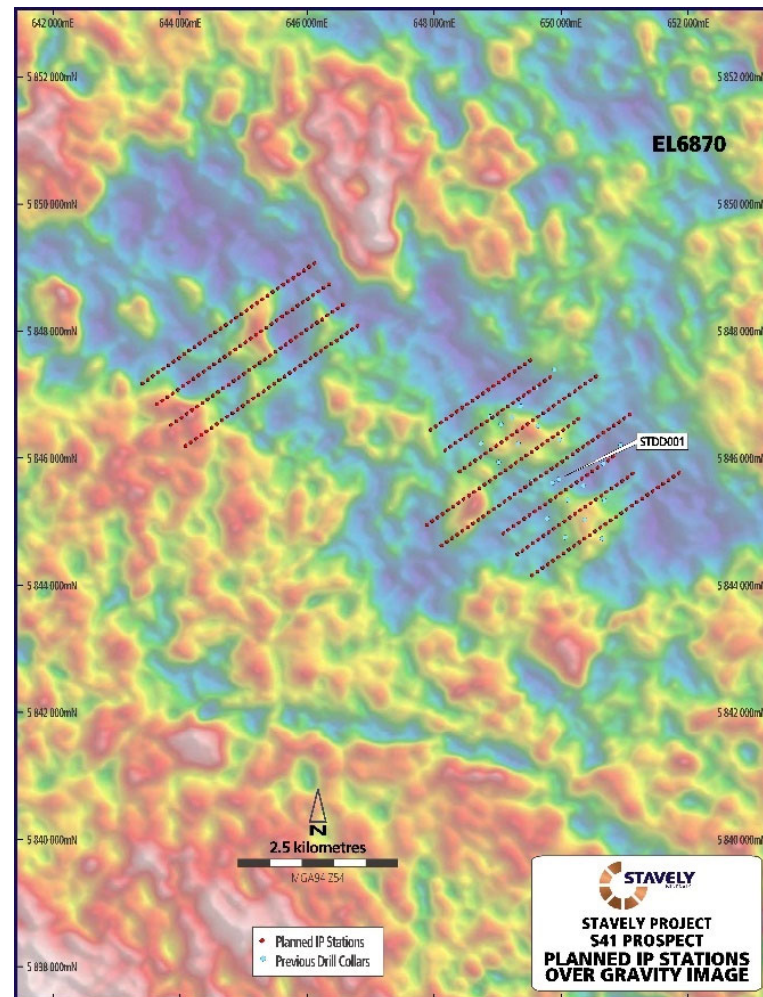
# The S41 Breccia-Hosted Gold Prospect – Map out sulphides with IP



Magnetics



Gravity



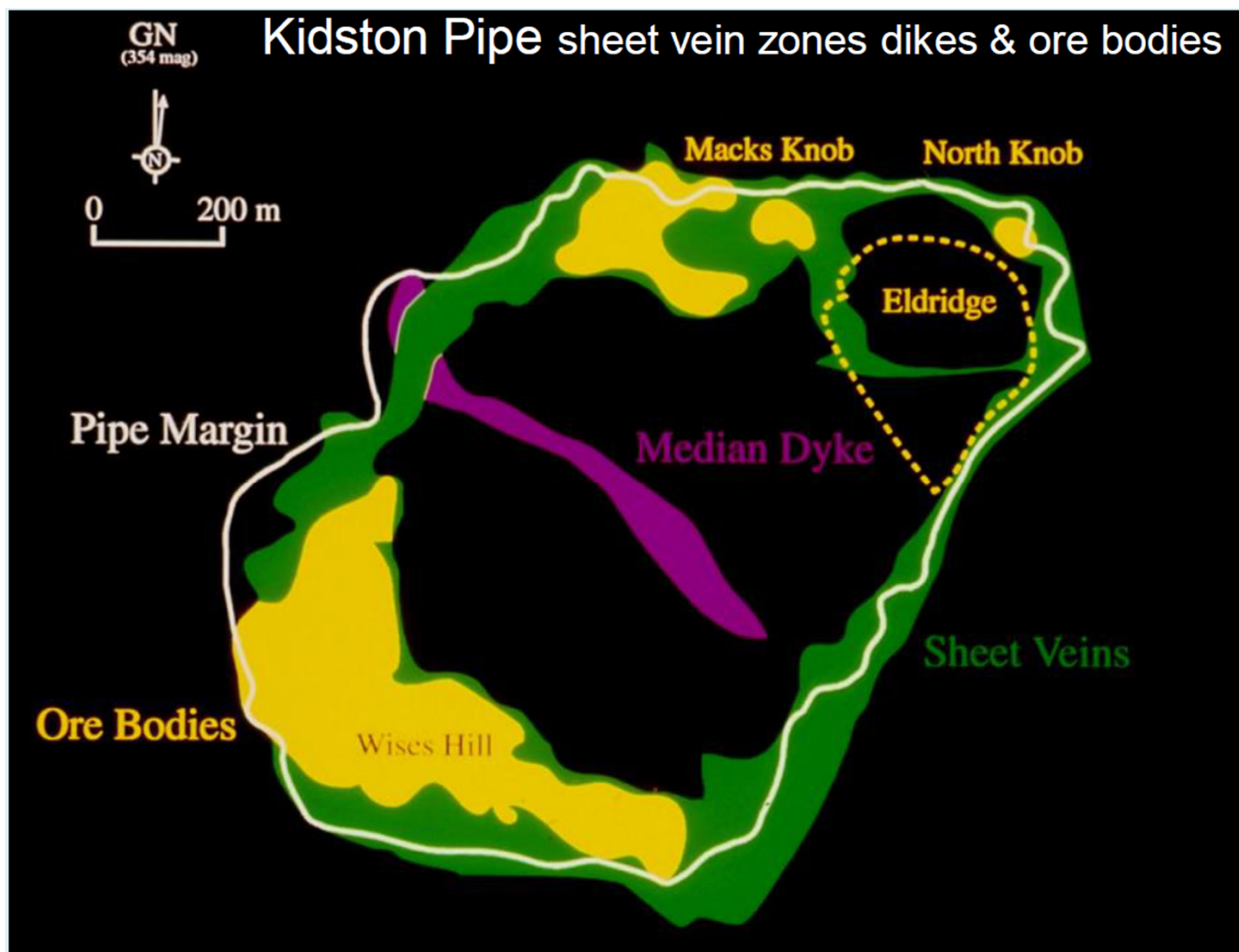
## S41 Prospect Geophysics<sup>1</sup>

- Proposed Induced Polarisation (IP) geophysical program
- Should 'see' through the basalt and identify zones of better developed sulphide mineralisation
- Follow-up aircore drilling and then, based on results, likely diamond drilling – including extending STDD001

<sup>1</sup>See ASX announcement 21/01/2025



# Kidston Breccia Pipe Outline and Sheeted Vein Mineralisation

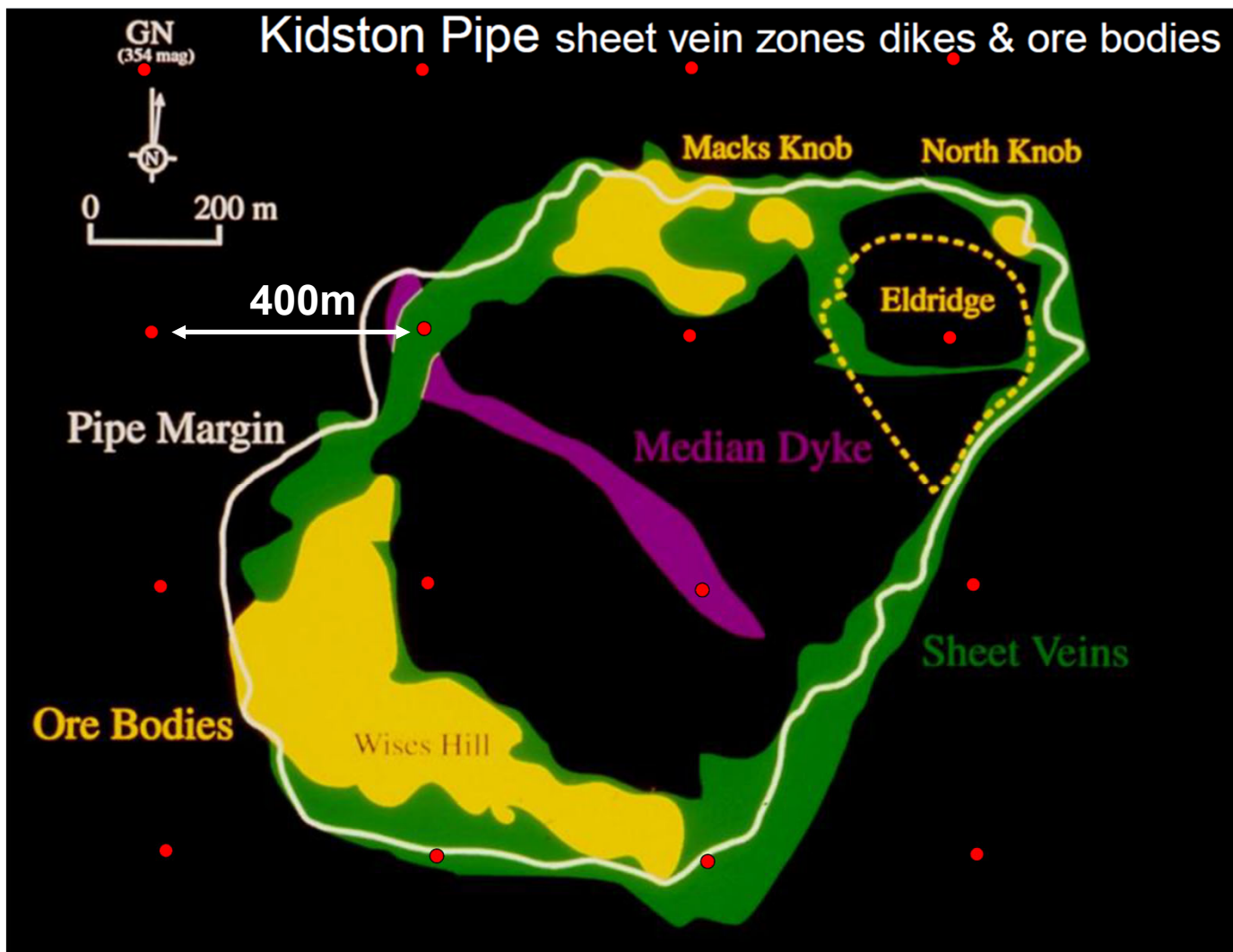


## Kidston +5Moz

- Gold mineralisation hosted in peripheral sheeted veins



# Kidston with 400m-spaced drill holes

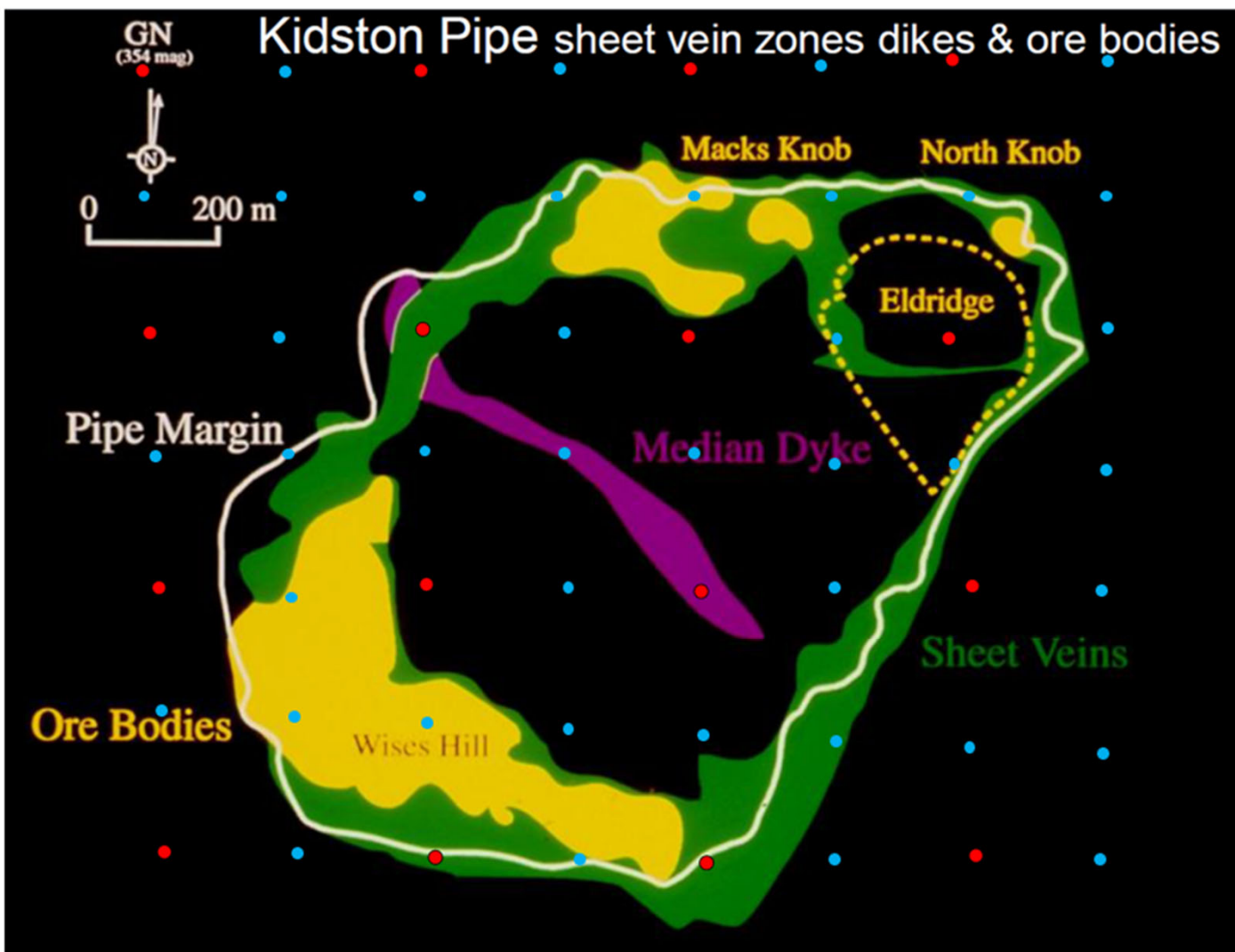


## Kidston +5Moz

- Gold mineralisation hosted in peripheral sheeted veins
- Conceptual 400m-spaced aircore drill spacing similar to the existing spacing at S41



# Kidston with 200m-spaced drill holes



## Kidston +5Moz

- Proposed 200m-spaced aircore drill infill

Red = 400m spaced aircore

Blue = 200m spaced aircore



# Corporate Summary



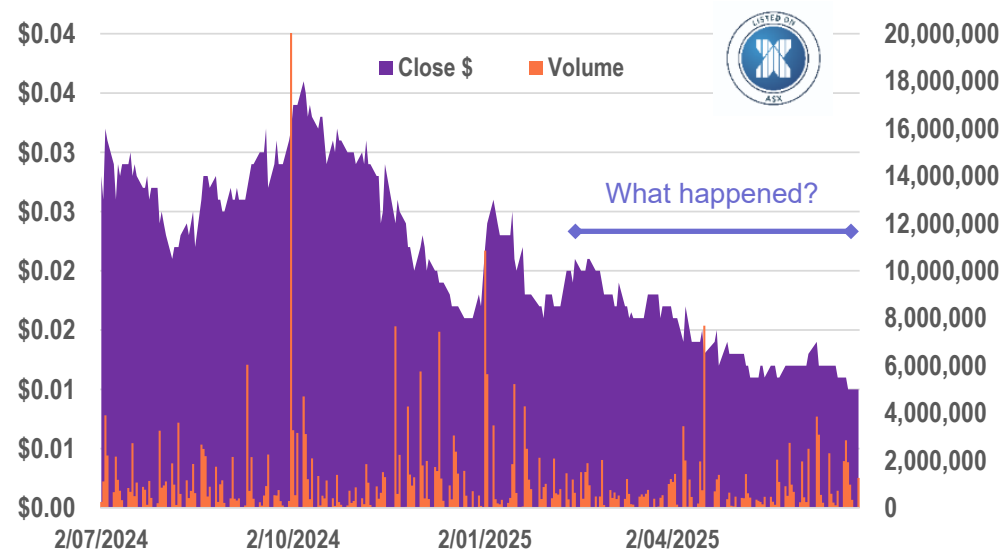
## CAPITAL STRUCTURE

ASX Ticker	SVY
Share Price (7/07/25)	\$0.011
Shares on Issue	544M
Cash (31/03/25)	\$1.73M
Market Capitalisation	\$5.98M
Management and Staff	~10% equity

## Directors

Chris Cairns	Executive Chair
Jennifer Murphy	Technical Director
Peter Ironside	Non-Executive Director
Amanda Sparks	Non-Executive Director & Company Secretary
Rob Dennis	Non-Executive Director

## 12-month Share Price to 1 July 2025





# Summary – Key Investment Takeaways



- ✓ The Cayley Lode is a quality, high-grade copper-gold-silver Mineral Resource from surface
- ✓ Renewed focus on gold targets, we own ~130km strike of fertile volcanic belt:
  - ✓ *Fairview North and South gold prospects; two priority targets to be tested – initial drilling completed*
  - ✓ *S41 breccia-hosted gold opportunity – scale potential with only 1 diamond drill hole to date*
- ✓ Junction copper-silver (aircore drilling impressive assays) – **gaining access a priority**
- ✓ Junction porphyry target – only 200m east of Junction high-grade copper-silver, again access a priority
- ✓ BIG targets







**Contact Us:**  
**Stavely Minerals Limited**  
Level 1, 168 Stirling Highway  
Nedlands WA 6009  
[www.stavely.com.au](http://www.stavely.com.au)  
[info@stavely.com.au](mailto:info@stavely.com.au)  
Ph: 08 9287 7630

The information in this presentation is extracted from information available to view on [www.stavely.com.au](http://www.stavely.com.au). The Company confirms that it is not aware of any new information or data that materially affects the information included in the original market announcement and, in the case of estimates of Mineral Resources or Ore Reserves, that all material assumptions and technical parameters underpinning the estimates in the relevant market announcement continue to apply and have not materially changed. The Company confirms that the form and context in which the Competent Person's findings are presented have not been materially modified from the original market announcement.





# Appendix 1: Mineral Resources



# Appendix 1: Mineral Resources Classifications



Table 1. Cayley Lode Initial Mineral Resource estimate

Resource Material	Resource Category	Cut-off	Tonnes (Mt)	Grade	Cont.	Grade	Cont.	Grade	Cont.
		(Cu %)		(Cu %)	Cu (Mlbs)	(Au g/t)	Au (oz)	(Ag g/t)	Ag (oz)
Primary Mineralisation (OP)	Indicated	0.2	5.87	1.04	134.4	0.23	43,407	7	1,321,074
	Inferred	0.2	1.7	1.3	49	0.2	10,931	9	491,907
Sub-Total Primary OP			7.6	1.1	183	0.2	54,338	7.4	1,808,158
Primary Mineralisation (UG)	Indicated	1.0	-	-	-	-	-	-	-
	Inferred	1.0	1.7	1.8	69	0.2	10,931	6	327,938
Sub-Total Primary UG			1.7	1.8	69	0.2	10,931	6	327,938
Total Cayley Lode			9.3	1.23	252	0.23	65,000	7.1	2,100,000



Table 4. Stavely Minerals Total Mineral Resources estimates

Resource Material	Resource Category	Cut-off	Tonnes (Mt)	Grade	Cont.	Grade	Cont.	Grade	Contained Metal	Grade	Cont.
		(Cu %)		(Cu %)	(Mlbs Cu)	(Au g/t)	(oz Au)	(Ag g/t)	(oz Ag)	(Zn %)	(kt Zn)
Total Resources	Indicated	1	21.5	0.61	288	0.1	67,301	3.1	2,153,972	0.3	8
	Inferred	1	6.8	1.2	175	0.1	32,797	4.7	1,043,839	0.2	16
Total Stavely Minerals			28.3	0.75*	463	0.11*	100,000	3.5	3,200,000	0.2	24

<sup>1</sup> Reported in compliance with the JORC Code 2012, see ASX announcement 14 June 2022



Cayley Lode bornite mineralisation - photo from ASX announcement 11 September 2019