



Managing Director's  
Presentation  
**to Annual General  
Meeting**

**22 November 2021**

# Important Information

The information contained in this Presentation or subsequently provided to the Recipient of this Presentation whether orally or in writing by or on behalf of Norwest Energy NL ("NWE") or their respective employees, agents or consultants ("Information") is provided to the Recipients on the terms and conditions set out in this notice.

The Presentation contains reference to certain intentions, expectations and plans of NWE. Those intentions, expectations and plans may or may not be achieved. They are based on certain assumptions which may not be met or on which views may differ. The performance and operations of NWE may be influenced by a number of factors, many of which are outside the control of NWE. No representation or warranty, express or implied, is made by NWE or any of its respective directors, officers, employees, advisers or agents, that any intentions, expectations or plans will be achieved either totally or partially or that any particular rate of return will be achieved.

The Presentation does not purport to contain all the information that any existing or prospective investor may require. It is not intended to be a complete or accurate statement of material information. In all cases, before acting in reliance on any information, the Recipient should conduct its own investigation and analysis in relation to the business opportunity and should check the accuracy, reliability and completeness of the Information and obtain independent and specific advice from appropriate professional advisers.

The Recipient should not treat the contents of this Presentation as advice relating to legal, taxation or investment matters and should consult its own advisers. NWE and its advisers take no responsibility for the contents of this Presentation.

NWE makes no representation or warranty (express or implied) as to the accuracy, reliability or completeness of the information. NWE and its respective directors, employees, agents and consultants shall have no liability (including liability to any person by reason of negligence or negligent misstatement) for any statements, opinions, information or matters (express or implied) arising out of, contained in or derived from, or for any omissions from the Presentation, except liability under statute that cannot be excluded.

NWE is not aware of any new information or data that materially affects the information included in any market announcement referenced throughout the Presentation and that all material assumptions and technical parameters underpinning the estimates in the relevant market announcement continue to apply and have not materially changed.

Prospective Resources are the estimated quantities of petroleum that may potentially be recovered by the application of a future development project(s) and relate to undiscovered accumulations. These estimates are quoted as gross (100%) and have both an associated risk of discovery and a chance of development. Further exploration, appraisal and evaluation is required to determine the existence of a significant quantity of potentially moveable hydrocarbons.



# A Truly Transformational 12 Months

- The Lockyer Deep-1 exploration well has confirmed a very significant conventional gas discovery
- Results thus far exceed pre-drill High Case expectations
- Encountered exceptional Kingia Sandstone reservoir quality
- Pressure data indicates a very substantial gas column
- Preparing for production testing early Q1 CY 2022
- Appraisal commencing CY 2022

# Investment Highlights



## Huge Resource Potential

- Structural mapping indicates Lockyer Deep discovery may extend across 92km<sup>2</sup>
- Significant follow-on potential



## Prime Position

- Situated in the sweet spot of the Perth Basin Permian play
- Close to major infrastructure with route to Domgas and export markets



## Strong Joint Venture

- JV with Operator Energy Resources Limited
- Excellent operational performance
- Strong working relationship



## Well Funded

- Existing cash and future options proceeds support next 12 months testing and appraisal program



## Lean Organisation

- Small, nimble team
- Rationalised portfolio for 100% focus on onshore Permian play
- Engaging specialist advisors as required to grow the business



## The Right Time

- Increasing demand for Natural Gas as a cleaner fuel for the transition to renewables



## Multiple Pathways to Deliver Shareholder Return

- Focused on shareholder return with multiple commercialisation options for maximum shareholder benefit



## Transformative Period Ahead

- Lockyer Deep-1 flow test pending
- CY 22 and CY23 expected to deliver ongoing high-impact catalysts

# Corporate Snapshot

## CAPITAL STRUCTURE

**A\$0.024**

Share price  
(19 Nov 21)

**5.5B**

Shares  
on issue

**605M**

Listed  
Options

**A\$132M**

Market  
Capitalisation

**A\$9M**

Cash & Future ITM  
Option Proceeds

**Nil**

Debt

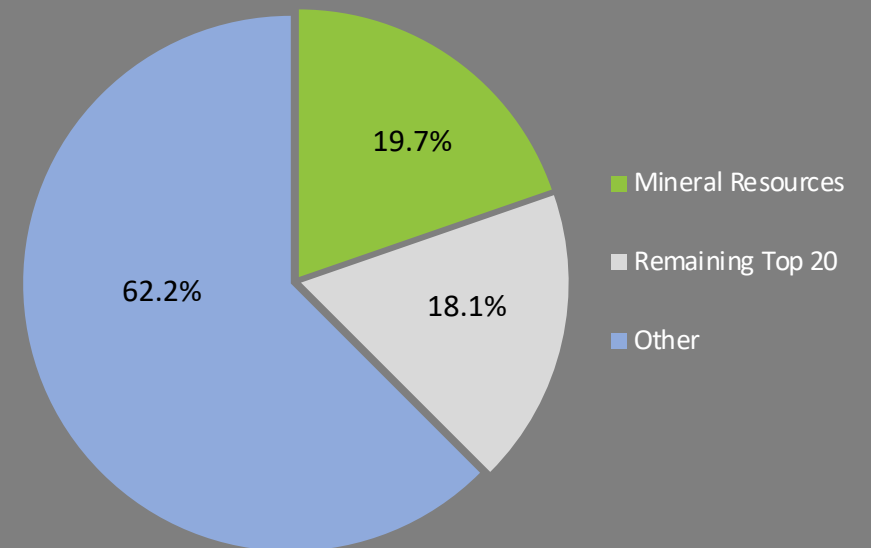
**\$123M**

Enterprise Value

## HISTORICAL SHARE PRICE

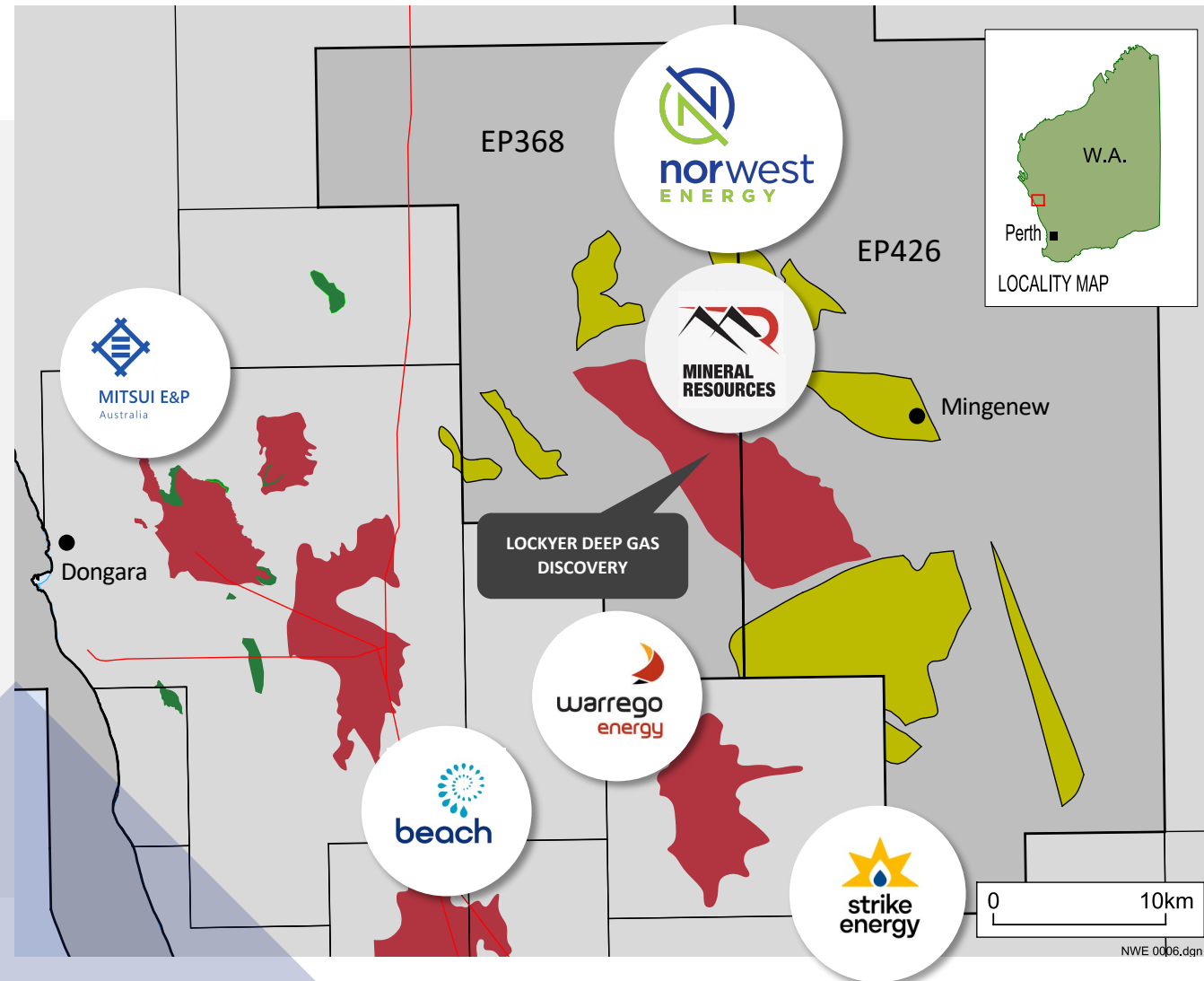


## OWNERSHIP



# Perth Basin Sweet Spot

- Norwest offers superior ASX-listed leverage to emerging, prolific Permian gas play
- Permian gas play within tightly held area of north Perth Basin
- Strong joint venture with Operator Energy Resources Limited (subsidiary of Mineral Resources Limited)
- Two large exploration permits, total 1,725 km<sup>2</sup>
- EP368 Norwest interest 20%
- EP426 Norwest interest 22.22%
- Lockyer Deep discovery located across both permits
- Follow-on exploration potential identified and upgraded by Lockyer Deep-1 result





# The Perth Basin Permian Gas Play



## WAITSIA DISCOVERY

- Largest onshore gas discovery in > 40 years
- Opened up new, deeper, geological play
- Current 2P reserves ~860 Bcf
- Flow rates up to 90 MMscfd
- Phase 2 development underway, with export via Northwest Shelf LNG



## WEST ERREGULLA AND BEHARRA SPRINGS DEEP

- WE-2 flows 69 MMscfd
- BSD-1 flows 46 MMscfd
- Strike/Warrego JV subsequently drills WE-3, WE-4 & WE-5
- BSD appraisal drilling planned CY 2022

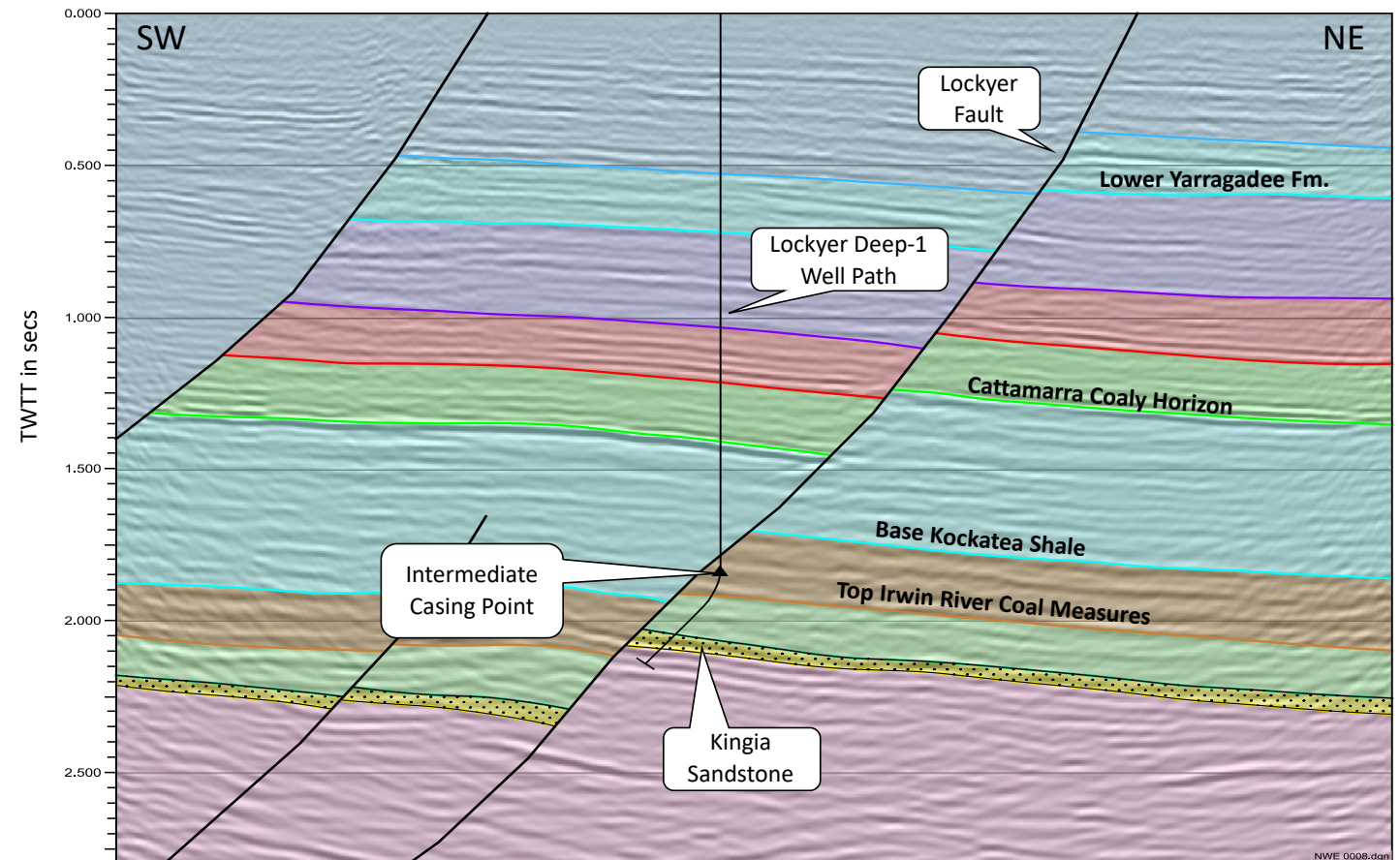


## LOCKYER DEEP DISCOVERY

- Four out of four major discoveries
- Exceeds pre-drill expectations
- Indicative areal extent 92km<sup>2</sup>
- Well suspended for production testing
- Expect very high deliverability Kingia reservoir

# Lockyer Deep Discovery Well Design

- Lockyer Deep-1 drilled to 4,157 metres Total Depth (TVDSS)
- Deviated by ~30 degrees from intermediate casing point, behind main Lockyer bounding fault
- Well path designed to intersect fault well above target, thereby providing confidence for optimal structural location
- Intersected Kingia reservoir in a crestal location

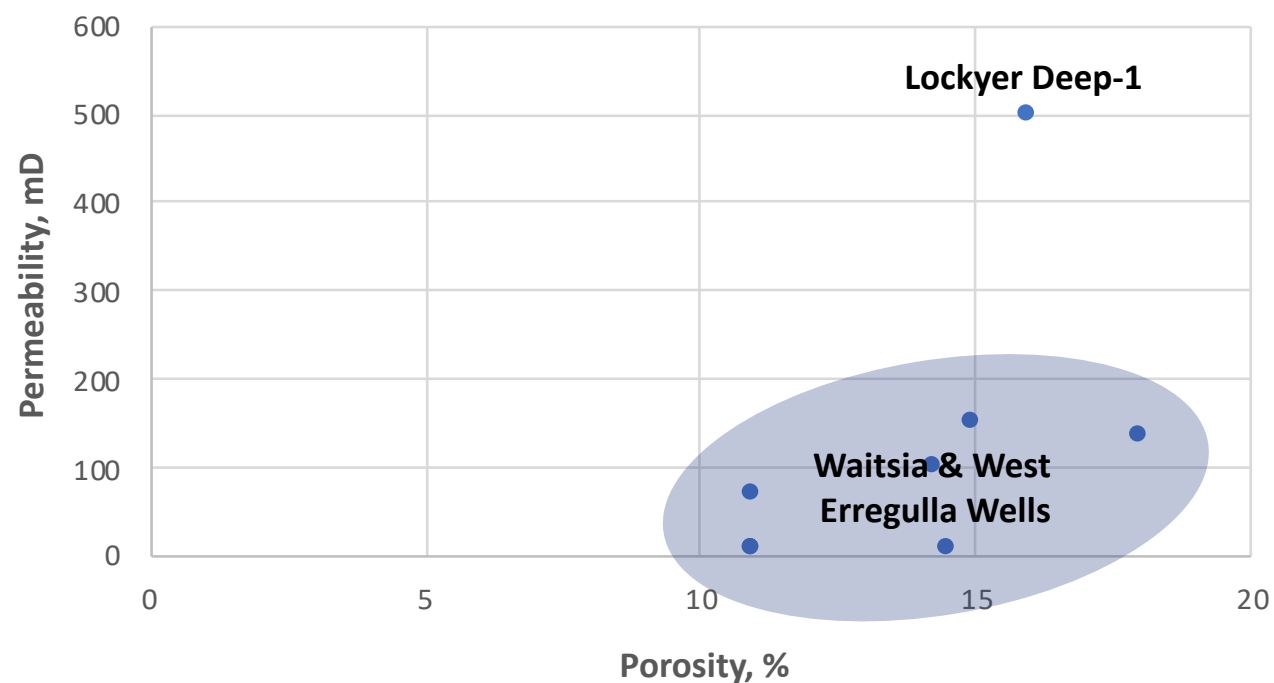




# Lockyer Deep Discovery Reservoir

- Exceptional reservoir quality encountered in Kingia Sandstone Fm.
- Top Kingia @ 3,879 metres (TVDSS)
- Net gas pay 20.2 metres (TVD)
- Average porosity 16%
- Maximum porosity 28%
- Average permeability estimated at 500mD
- Underlying 13.8 metre (TVD) lower quality Kingia “gasifer” may contribute to total recoverable resources
- High Cliff Sandstone tight at LD-1 location however may well be of better quality across the extensive discovery area

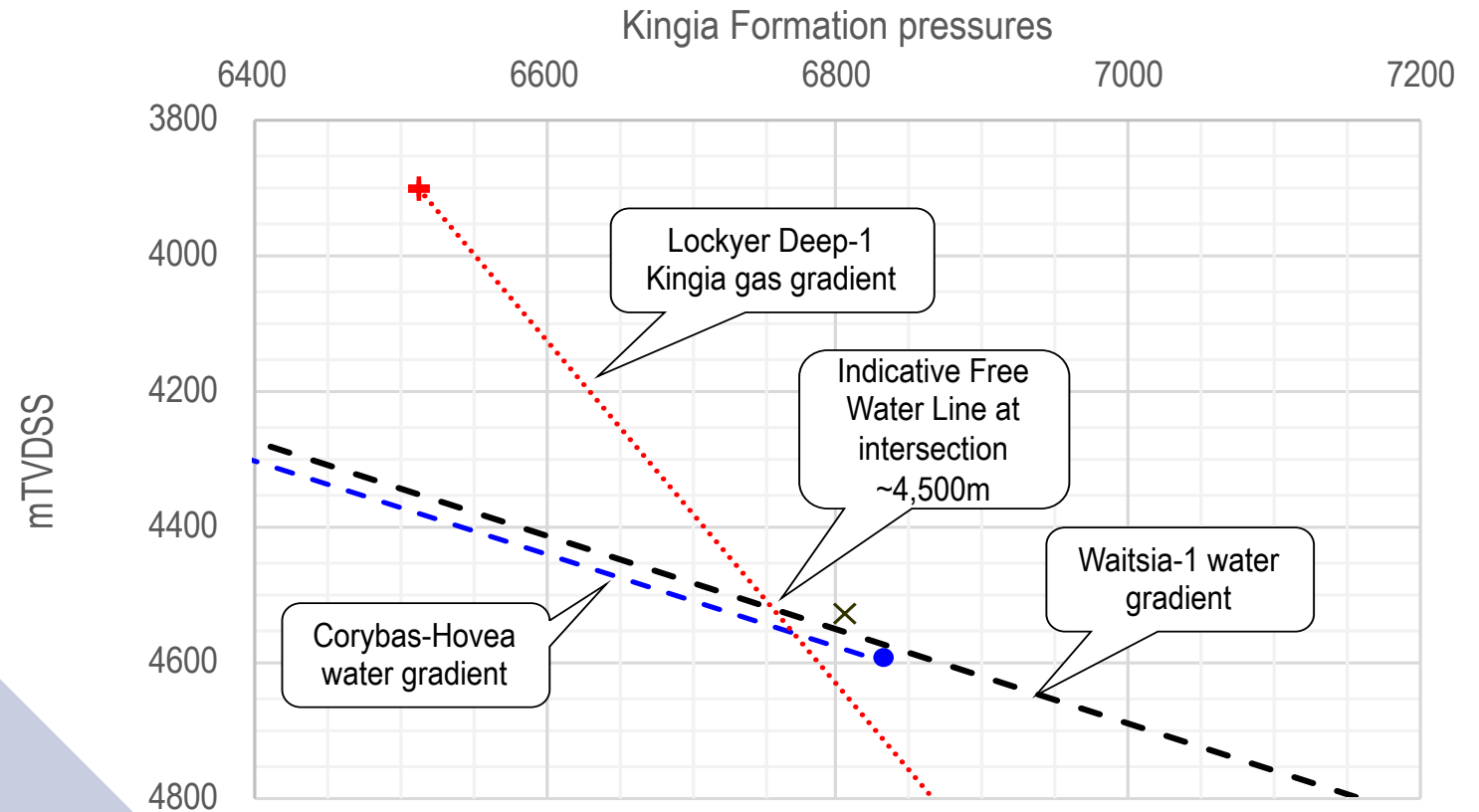
## Permian Gas Discoveries Poro-Perm



# Lockyer Deep Discovery Gas Column

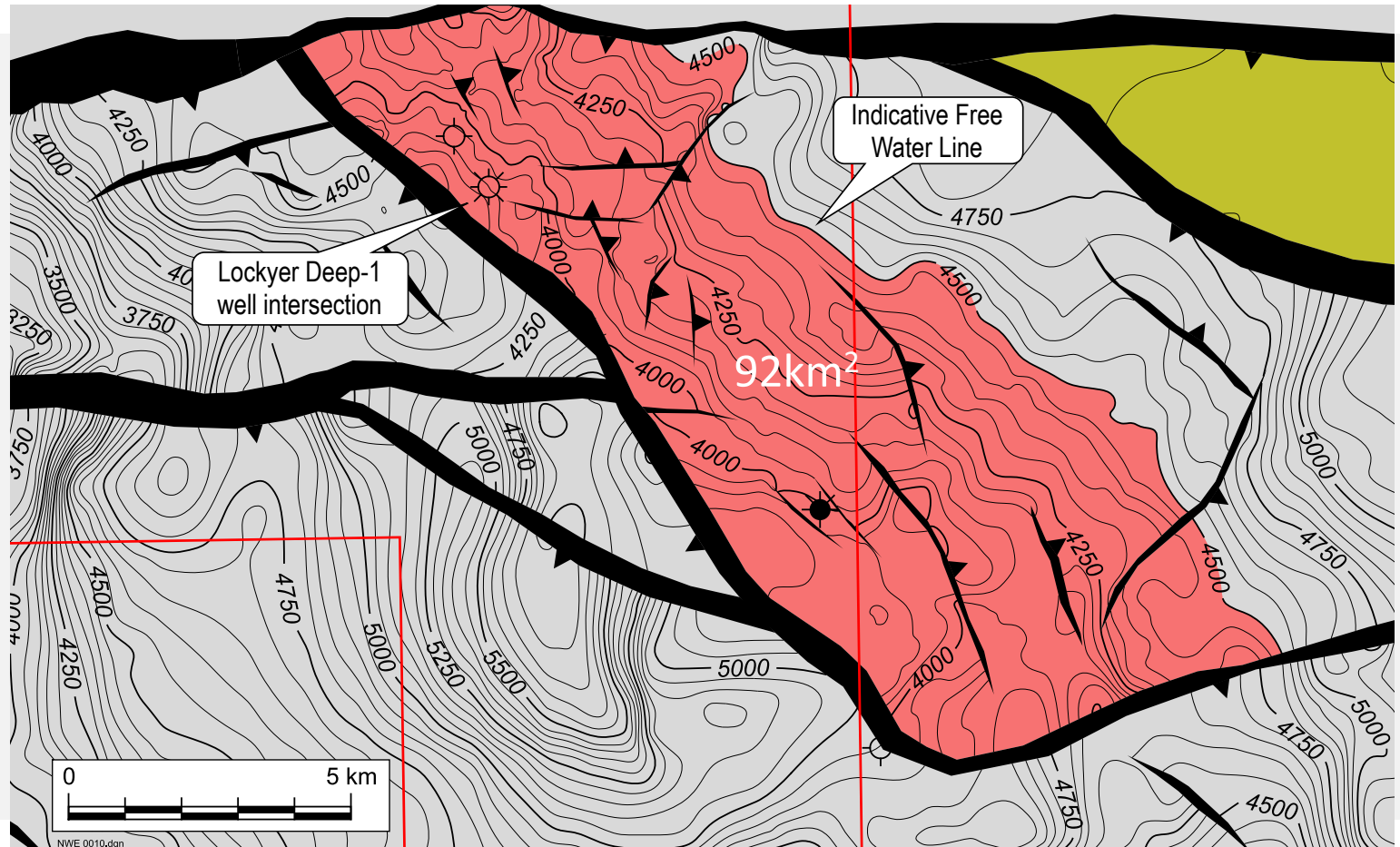
- Very high reservoir pressure - 6,514 psi
- Gas pressure gradient indicates a very substantial gas column
- Indicative Free Water Line ~4,500 metres (TVD), based on intersection with regional water gradient
- Gas column up to ~700 metres, relative to Waitsia's 350-400 metres
- Implies a high-integrity fault sealing mechanism
- Supports case for very significant gas discovery

## Lockyer Deep-1 Formation Pressure Profile



# Lockyer Deep Discovery Structure

- Fault-bounded three-way dip structure
- Post-drill structural interpretation incorporates recently reprocessed seismic data sets, and well data
- Indicative Free Water Line @ 4,500 metres (TVDSS) supports areal extent of gas at 92 km<sup>2</sup>
- The associated Gross Rock Volume implies a resource that exceeds the pre-drill High Case Prospective Resource
- Suggests that main bounding faults are sealing, regardless of orientation and throw

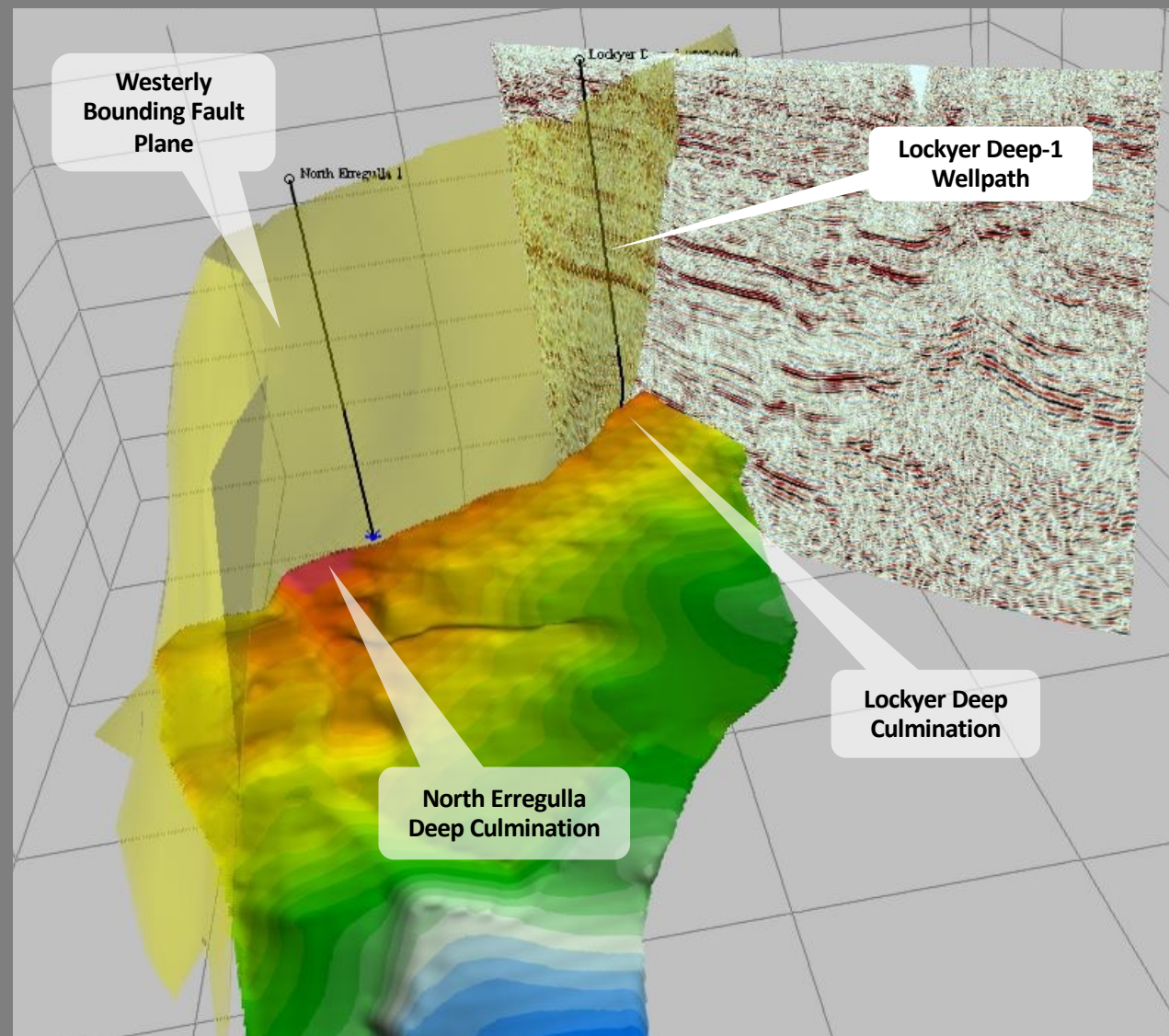


Top Kingia Fm. Depth Structure Map



# Lockyer Deep Discovery Appraisal

- JV currently preparing program design & budget for well testing early CY 2022
- Planned Rococo 3D survey postponed to Q1 CY 2023 due to seismic contractor experiencing unforeseen delays and consequently unable to complete the survey during the limited acquisition season (post-harvest, Jan – Mar 2022)
- JV confident to proceed with appraisal drilling in meantime
- Ringneck 2D survey will proceed in Q1 CY 2022 to support decision process on appraisal well locations, in conjunction with a Quantitative Seismic Interpretation and rock physics study
- North Erregulla Deep location likely for first appraisal well
- Operator ordering long lead items inventory for up to three appraisal/exploration wells
- Drilling to commence CY 2022
- Operator pursuing a number of rig options



# Lockyer Deep Discovery Commercialisation

- Operator has presented a conceptual timeline to development and production
- Sets an aggressive schedule for appraisal, FEED, FID and development
- Norwest has independently engaged a specialist consultancy to advise on gas marketing strategy – well versed with the Perth Basin, Domgas and export markets
- Monetisation strategy will consider WA Domestic Gas market, value-add opportunities and potential for export
- Early-stage gas marketing program to run in parallel with appraisal activities
- Norwest funded for >12 months work program

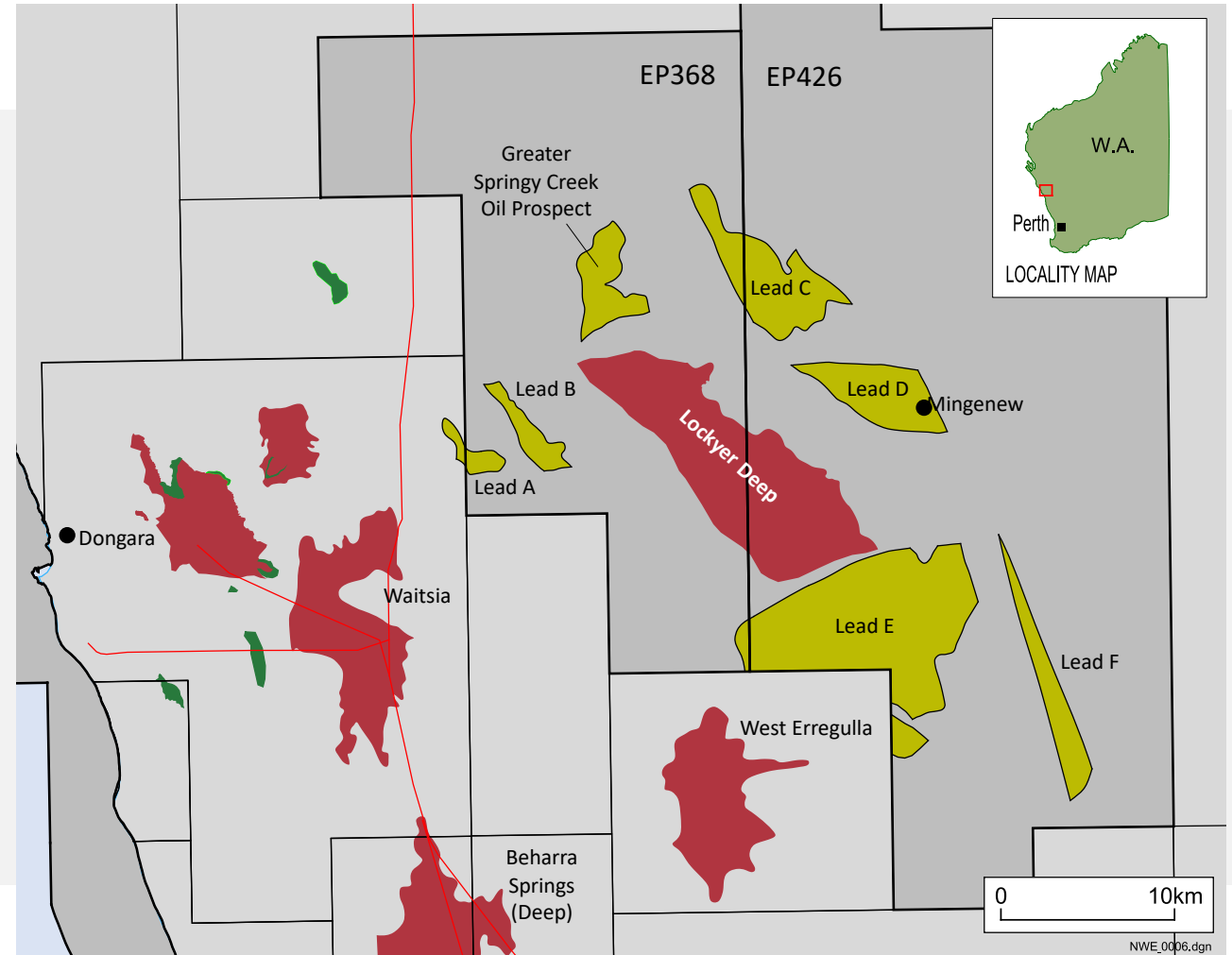
## Lockyer Deep Development (Indicative)

Year	# Wells	Stage
2022	3	Appraisal drilling (wells completed for production)
2023	4	Development drilling, FEED & FID
2024	4	Stage 1 production facility
2025	4	Stage 2 expansion

From Operator Energy Resources Limited

# Significant Follow-on Potential

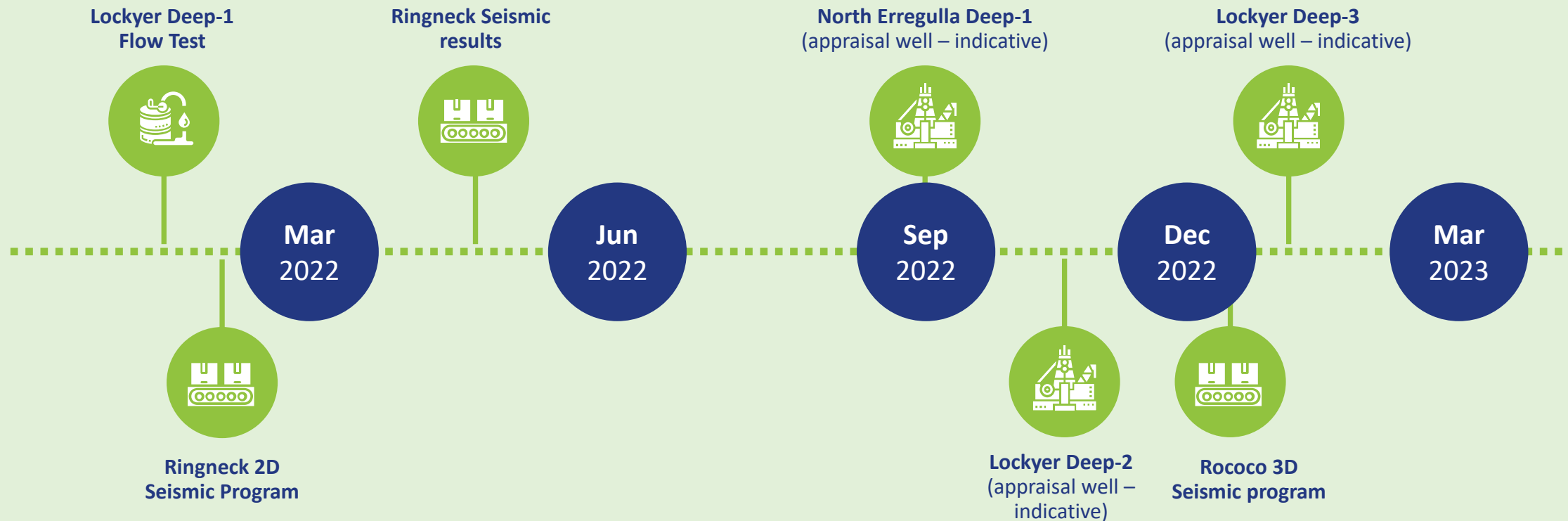
- Significant follow-on exploration potential identified within permits
- Upgraded by recent seismic reprocessing program and success of Lockyer Deep-1
- Ringneck 2D seismic program in Q1 CY 2022 will improve structural definition of area to SE of Lockyer Deep
- Aim of Ringneck survey is to upgrade leads to drillable prospect status
- Joint Venture planning for two exploration wells by mid 2023





# A Transformational Period Ahead

## PROVE UP THE RESOURCE



## DEFINE COMMERCIALISATION STRATEGY & MARKET THE RESOURCE

# Thank You



## CONTACT

**Iain Smith**  
Managing Director  
Email: [info@norwestenergy.com.au](mailto:info@norwestenergy.com.au)



## LOCATION

**Norwest Energy NL.**  
Level 2  
30 Richardson Street  
West Perth  
Western Australia 6005



## PHONE

+61 8 9227 3240



## WEBSITE

[norwestenergy.com.au](http://norwestenergy.com.au)